

- _____ 1. Smoke--Imp Mini Morning Glory 6" vase--Gorgeous, wide top, open bubble on base
- _____ 2. G--Imperial Mini Morning Glory 5 1/2" vase--tiny open bubble on base
- _____ 3. M--Imp Mini Morning Glory 5 1/2" vase
- _____ 4. Elec P--Mini Morning Glory 6" vase
- _____ 5. M--Imp Freefold 12 3/4" vase--radium, nice vase
- _____ 6. P--Imp Freefold 11 3/4" vase--radium electric purple!
- _____ 7. Smoke--Imp Smooth Panels 8 1/2" vase with huge 6" opening--Sweet!
- _____ 8. Crystal--Imp Smooth Panels 12 3/4" vase--Beautiful radium iridescence and Iron Cross Mark
- _____ 9. G--Imp Ripple 8 3/4" vase--large 5 3/4" opening, nice squatty look
- _____ 10. M--Imp Ocatgon 8" vase--A scarce dandy
- _____ 11. M--Imp Rococco vase
- _____ 12. M--Imp Rococco vase, clear bottom
- _____ 13. G--Imp Acanthus 8" round bowl
- _____ 14. P--Imp Acanthus 7 3/4" round bowl--Awesome electric
- _____ 15. G--Imp Acanthus 8" bowl--excellent iridescence!
- _____ 16. Smoke--Imp Acanthus 7 1/2" round bowl--Scarce and nice
- _____ 17. M--Imp Acanthus 8 3/4" six ruffle bowl--dark and pretty
- _____ 18. P--Imp Pansy 8 3/4" ruffled bowl--fine example
- _____ 19. M--Imp Pansy 9" ruffled bowl--radium beauty
- _____ 20. Amber--Imp Pansy 9" ruffled bowl
- _____ 21. M--Imp Grape 9" ruffled bowl
- _____ 22. Lavender--Imp Grape 9" low ruffled bowl--Beautiful
- _____ 23. Elec P--Imp Grape water pitcher--Monster color!!
- _____ 24. P--Imp Grape tumblers--4 x \$, nice match to pitcher above
- _____ 25. P--Imp Grape tumbler
- _____ 26. P--Imp Grape carafe--golden grapes
- _____ 27. M--Imp Heavy Grape 6 1/2" round bowl
- _____ 28. Scarce Aqua--Imp Heavy Grape 8 1/2" round bowl
- _____ 29. Elec P--Imp Heavy Grape 8 3/4" round bowl
- _____ 30. Radium Smoke--Imp Heavy Grape 10" round bowl--Truly outstanding
- _____ 31. P--Imp Heavy Grape 8 1/4" flat plate--pretty grapes
- _____ 32. Amber--Imp Heavy Grape 10 1/2" ruffled bowl--Way above average
- _____ 33. Amber--Imp Grape 4 3/4" round bowls--2 x \$
- _____ 34. Scarce Amber--Imp Scroll Embossed 5 3/4" small compote
- _____ 35. M--Imp Scroll Embossed large ruffled compote--Eastern Star exterior
- _____ 36. Dark M--Imp Hobstar Flower ruffled compote--radium finish
- _____ 37. P--Imp Grape ruffled compote--very pretty interior
- _____ 38. M--Imp Star Medallion ruffled compote
- _____ 39. Rare P--Imp Octagon 5" tall round compote--Great piece!
- _____ 40. W--Imp Scroll Embossed 7 3/4" round, flared bowl--smooth exterior
- _____ 41. Superb G--Imp Scroll Embossed 7 1/2" round, flared bowl--smooth exterior
- _____ 42. Helios G--Imp Scroll Embossed 9 3/4" plate--smooth marie
- _____ 43. G--Imp Scroll Embossed 9 1/2" plate--Super marigold overlay!
- _____ 44. M--Imp Scroll Embossed 9 1/4" plate--Outstanding satin hues
- _____ 45. M--Imp Scroll Embossed 9 1/2" plate--Fantastic radium colors, starred base
- _____ 46. G--Imp Open Rose 9" plate
- _____ 47. Amber--Imp Open Rose 9" plate
- _____ 48. Scarce B--Imp Open Rose 9" round, flared bowl--nice one
- _____ 49. Elec P--Imp Lustre Rose footed fernery bowl--Knockout color!!
- _____ 50. Unusual "mint" green--Imp Open Rose 9" round, flared bowl--never seen one this color
- _____ 51. Lavender--Imp Windmill 5 1/2" ruffled sauce bowl--Colorful
- _____ 52. P--Imp Double Dutch 9" footed, ruffled bowl
- _____ 53. Elec P--Imp File 8" ruffled bowl--exterior pattern, smooth interior--What a looker!
- _____ 54. P--Imp Star of David 8 3/4" ruffled bowl--Intense color
- _____ 55. P--Imp Flute breakfast sugar
- _____ 56. Smoke--Imp Oval and Round 5 1/4" ruffled sauce--scarce color
- _____ 57. Pastel M--Imp Optic and Buttons 7 1/2" deep, round bowl--Iron Cross Mark
- _____ 58. RARE Blue--Imp Flute and Cane 8 1/2" deep, round, flared bowl
- _____ 59. M--Imp Tulip and Cane cordial
- _____ 60. M--Fashion punch cups--4 x \$
- _____ 61. M--Dugan Windflower 8 1/2" ruffled bowl
- _____ 62. B--Dugan Windflower 9" ruffled bowl
- _____ 63. M--Dugan Windflower 9" plate
- _____ 64. B--Dugan Windflower 9" plate--desirable color
- _____ 65. M--Fenton Holly ruffled hat
- _____ 66. M--Fenton Blackberry Spray JIP hat
- _____ 67. B--Fenton Blackberry Spray ruffled hat
- _____ 68. B--Fenton Captive Rose 8 1/4" 2 in 1 edge bowl--Very pretty
- _____ 69. G--Mlbg Blackberry Wreath 9" 3 in 1 edge bowl
- _____ 70. G--Mlbg Rays and Ribbons 9 1/2" round, flared bowl
- _____ 71. M--Balmoral or Heavy Vine tall wine glasses--2 x \$
- _____ 72. M--Buzz Saw and File large water pitcher--Good dark example
- _____ 73. M--Argentina Star 6" vase
- _____ 74. M--Mlbg Nesting Swan 9 3/4" ruffled bowl
- _____ 75. PO--Fenton Holly ruffled bowl--scarce color
- _____ 76. PO--Dugan Cherries 9 1/2" ruffled bowl--Jewelled Heart exterior
- _____ 77. M--Mlbg Hanging Cherries 8 3/4" 3 in 1 edge bowl--lots of yellows
- _____ 78. M--Mlbg Peacock at Urn 10" ICS bowl--desirable and lovely piece
- _____ 79. M--Large 11 3/4" round flared, three footed bowl--depression era?
- _____ 80. M--Riihimaki Drapery Variant pitcher--exceptional
- _____ 81. P--Imp Scroll Embossed 9 1/2" plate
- _____ 82. Rare Renninger Blue--N Hearts and Flowers ruffled bowl--professionally repaired tip, so what?
- _____ 83. Dark rich M--Imp Grape water pitcher--so dark it looks amber
- _____ 84. P--N Grape and Cable 9" plate--attractive iridescence
- _____ 85. Clambroth--Fenton Orange Tree 9 3/4" plate w/ trunk center--loads of color
- _____ 86. P--Imp Scroll Embossed 9 1/4" plate--starred base, eight "sides"--very unusual
- _____ 87. Nice M--N stippled Three Fruits 9" plate
- _____ 88. Amber--Nixon/Agnew Nursery Rhyme mug--mkd IG
- _____ 89. P--Mlbg Seacoast pin tray--large chip off of rim
- _____ 90. P--Dugan Circle Scroll hat whimsey from tumbler--JIP shape
- _____ 91. M--Fenton Kittens six ruffle bowl
- _____ 92. P--N Grape and Cable powder jar with lid
- _____ 93. B--Sowerby Hen on Nest covered dish
- _____ 94. M--Sowerby Hen on Nest covered dish
- _____ 95. P--Dugan Four Flowers 6 1/2" plate--fantastic color, large chip on marie
- _____ 96. Pumpkin M--N Good Luck PCE bowl
- _____ 97. Red--Fenton 2-row Open Edge JIP hat--better example
- _____ 98. Red--Fenton Acorns 6" round nut bowl--Here's a scarce one!
- _____ 99. P--N Town Pump vase--high demand item
- _____ 100. P--Mlbg Holly Sprig ruffled compote--a splendid radium rarity!!
- _____ 101. B--Fenton Two Flowers 9" round, footed bowl--Nice look to it
- _____ 102. Scarce Aqua/Sapphire Fenton Two Flowers 10 1/2" ruffled, footed bowl--How many of these have you seen?
- _____ 103. P--Cambridge Double Star water pitcher w/ four tumblers (two chipped). Scarce in purple!
- _____ 104. M--Inverted Coin Dot seven piece water set
- _____ 105. W--Dugan Roundup 9" low ruffled bowl--pastel delight
- _____ 106. W--N Hearts and Flowers 9" ruffled bowl
- _____ 107. Elec P--N Peacocks PCE bowl--excellent color
- _____ 108. M--Dugan Fanciful 8 3/4" plate--Way above average
- _____ 109. Sapphire--N Concave Diamond tumblers--3 x \$
- _____ 110. Lavender--Imp Lustre Rose 7 1/2" round, flared bowl
- _____ 111. Smoke--Imp Pansy pickle dish
- _____ 112. W--Imperial Double Scroll centerpiece bowl--Super scarce, stretchy and super pastels
- _____ 113. Sapphire--Stretch glass 1 lb. candy dish
- _____ 114. G--N Strawberry 9" plate--BW exterior, gold iridescence
- _____ 115. M--N 8-sided Bushel Basket--interior fracture in one foot
- _____ 116. B--Fenton Orange Tree breakfast creamer and sugar
- _____ 117. M Flash--large ashtray with "Helen" embossed on bottom
- _____ 118. M Flash--A & W children's mugs--2 x \$

- _____ 119. Smoke--Imp Ripple 10 3/4" vase
 _____ 120. Red--Fenton Fine Rib 9 1/2" vase
 _____ 121. B--N Diamond Point 7" squatty vase--scarce and desirable color
 _____ 122. Rare B--Daisy and Drape vase--flared top
 _____ 123. M--Thin Rib and Drape 4 1/2" vase
 _____ 124. Red--Fenton Apple Tree vase whimsy from pitcher--non iridized, but neat!
 _____ 125. M--N Three Fruits 9" plate--BW exterior
 _____ 126. Pumpkin M--N Strawberry ruffled bowl--BW exterior
 _____ 127. M--N Three Fruits 9" plate--BW exterior
 _____ 128. M--N Wishbone footed, ruffled bowl
 _____ 129. B--Fenton Vintage (Grape) fernery
 _____ 130. P--N Strawberry PCE bowl--BW exterior
 _____ 131. Celeste B--Swan master salt
 _____ 132. A--Dugan Mary Ann Vase--top notch color
 _____ 133. Ice G--Swan master salt
 _____ 134. A--Dugan Wreath of Roses rosebowl--uncommon color
 _____ 135. P--Dugan Holly and Berry 7 3/4" ruffled bowl
 _____ 136. M--N Strawberry 9" plate--about as pretty as they come
 _____ 137. B--Rose Garden rosebowl--scarce item
 _____ 138. M--Daisy and Block rowboat
 _____ 139. M--Split Diamond creamer
 _____ 140. Scarce A--Pineapple 8" round bowl
 _____ 141. M--Sea Thistle 6 1/2", nine ruffle bowl
 _____ 142. M--Sea Thistle creamer
 _____ 143. P--N Grape and Cable punch cups--2 x \$
 _____ 144. Dark M--Imp Grape wine bottle with stopper
 _____ 145. G--Mlbg Boutonniere ruffled compote--Radium and nice
 _____ 146. G--Imp Flute toothpick holder
 _____ 147. Scarce G--Fenton Peacock and Dahlia 6 1/4" ICS bowl--fabulous color
 _____ 148. G--Fenton Holly 8 1/4" ICS bowl
 _____ 149. G--Fenton Lotus and Grape 9" ruffled bowl--excellent color
 _____ 150. G--N Singing Birds mug--radium
 _____ 151. G--N Greek Key 8 3/4" ruffled bowl--Lush blues, but has tooth removed
 _____ 152. G--N Grape and Cable Vt 9 1/4" plate--BW exterior
 _____ 153. G--Imp Scroll Embossed 9 1/2" plate--pretty in pinks
 _____ 154. P--N Wishbone footed, ruffled bowl
 _____ 155. Dark M--Imp Heavy Grape 5" round bowl
 _____ 156. B--N Peacocks PCE bowl
 _____ 157. Rich M--Fenton Long Thumbprint Hobnail 11 3/4" vase
 _____ 158. W--N Tree Trunk 10 1/4" vase
 _____ 159. M--N Tree Trunk 8" vase--killer example
 _____ 160. B--N Tree Trunk 10" vase--pretty
 _____ 161. M--N Tornado 6" vase--buffed rim
 _____ 162. Aqua/Teal Westmoreland Leaf Swirl compote
 _____ 163. P--Dugan Big Basketweave squatty 3 3/4" vase--base chip
 _____ 164. Alluring B--N Good Luck ruffled bowl--rib exterior--multi electric
 _____ 165. P--Dugan Holly and Berry 8 1/4" ruffled bowl
 _____ 166. BA--Heavy Iris 12" vase--contemporary and gorgeous
 _____ 167. B--Pansy 9" plate--2000 HOACGA souvenir
 _____ 168. Vaseline Opal--Grape pattern spittoon--2001 TCGC souvenir piece
 _____ 169. M--Imp Windmill 7 3/4" round, flared bowl--pretty
 _____ 170. M--Imp Double Dutch 8 1/2" round, flared, footed bowl
 _____ 171. M--Fenton Thistle banana boat--and a good one, too
 _____ 172. Rich M--Imp Shell and Sand 8" round, scalloped bowl
 _____ 173. M--N Beaded Cable rosebowl--lush pastels
 _____ 174. M--Imp Star and File nut bowl--a scarce piece
 _____ 175. M--Fenton Flowers rosebowl--Dark!
 _____ 176. M--Fenton Leaf Tiers 5 1/4" footed berry bowl
 _____ 177. Pastel M--N Good Luck PCE bowl--Beautiful!
 _____ 178. M--N Grape and Cable pin dish whimsy from punch cup
 _____ 179. M Flash--Thistle 5 3/4" vase--made by Caning Town Glass Works
 _____ 180. B--Fenton Thistle 8 1/2" ruffled bowl
 _____ 181. B--Fenton Peacock and Dahlia 7" ruffled bowl--fantastic color
 _____ 182. B--Fenton Vintage 10" low float bowl--Truly scarce item
 _____ 183. Stunning B--Fenton Holly 9 1/4" ruffled bowl
 _____ 184. B Fenton Heart and Vine 9 1/2" plate--Another prize!!
 _____ 185. B--Fenton Lotus and Grape 9" ruffled bowl--exquisite color
 _____ 186. B--Fenton Coin Dot 7 3/4" ruffled bowl
 _____ 187. B--Fenton Blackberry Open Edge 2 sides up 7" basket
 _____ 188. Blue Opal--Fenton Grape and Cable 9" ruffled, footed bowl--Tremendous rarity and great color--I've never seen another
 _____ 189. B--Rustic 15" mid-size vase
 _____ 190. B--N Thin Rib 7 1/2" vase--loaded up with color
 _____ 191. A--Dugan Cosmos Vt. 10" ruffled bowl--Seldom seen color in this pattern
 _____ 192. Lav/Smoke Dugan Windflower 8 1/2" ruffled bowl--another scarce color
 _____ 193. Yellow Vas--Fenton Holly 9" ruffled bowl
 _____ 194. M--Fenton Holly 9 3/4" plate--Excellent example
 _____ 195. Dark M--Fenton Holly 7 1/4" nut bowl--unusual shape
 _____ 196. P--Imp Grape 9 1/2" low ruffled bowl--chip on back of rim
 _____ 197. M--Fenton Peacock at Urn 9" ruffled bowl
 _____ 198. M--Cosmos and Cane 7 1/2" ruffled bowl--Headdress exterior
 _____ 199. Lavender--Dugan Windflower 8 1/2" ruffled bowl
 _____ 200. Amber--Imp Heavy Grape 8 1/2" plate--luscious colors
 _____ 201. P--N Fruits and Flowers 8" 2-sides up plate--Uncommon shape
 _____ 202. M--Dugan Brooklyn Bridge 8 1/2" ruffled bowl--Radium dandy
 _____ 203. M--Dugan Brooklyn Bridge 8 1/2" ruffled bowl--Just as nice as can be
 _____ 204. P--N Three Fruits 9" plate--BW exterior
 _____ 205. B--N stippled Three Fruits 9" plate--Rib exterior
 _____ 206. M--N stippled Three Fruits 9" plate--Rib exterior
 _____ 207. AO--N Leaf and Beads rosebowl--exquisite marigold overlay
 _____ 208. M--N Grape and Cable 9" plate--pleasing pastel hues
 _____ 209. AO--N Round bushel basket
 _____ 210. W--N Hearts and Flowers PCE bowl--frosty
 _____ 211. M--N Strawberry 8 3/4" ruffled bowl--BW exterior
 _____ 212. B--Fenton Orange Tree loving cup
 _____ 213. Red--Fenton Open Edge 5 3/4" 2-sides up basket--Better than average
 _____ 214. Red--Fenton Open Edge 5 3/4" JIP basket
 _____ 215. Red Reverse Amberina--Fenton Stippled Rays/Scale Band 6 1/2" ruffled bowl--Scarce color
 _____ 216. Rare Cherry Red--Fenton Grape and Cable 8" ruffled, ball footed bowl--Red, red, red
 _____ 217. Rich M--Imp 474 punch bowl, base and eight cups--nicely matched
 _____ 218. B--Dugan Peacock at Fountain tumbler
 _____ 219. B--Fenton Lattice and Grape tumbler
 _____ 220. W--N Oriental Poppy tumbler
 _____ 221. M--Rising Sun tumbler
 _____ 222. G--Fenton Panelled Dandelion tumbler
 _____ 223. M--Grape and Palisade 4 3/4" tumbler
 _____ 224. M--Muscadine 5 3/8" tumbler
 _____ 225. M--Ribs 5 1/4" tumbler
 _____ 226. M--Grapevine and Spikes 5 1/2" tumbler
 _____ 227. Rich M--Imperial Grape tumbler
 _____ 228. M--Fenton Panelled Dandelion tumbler
 _____ 229. M--Dugan Heavy Iris tumbler
 _____ 230. B--Fenton Butterfly and Fern tumbler--ground base
 _____ 231. M--Imp 474 tumbler
 _____ 232. B--Banded enameled Forget-Me-Not tumbler
 _____ 233. G--Enameled Crocus Panels tumbler--very scarce
 _____ 234. G--Enameled Iris w/ Prism Band tumbler
 _____ 235. A--Enameled Iris w/ Prims Band tumbler--with ribbed interior
 _____ 236. B--Enameled Daisy and Little Flowers tumbler
 _____ 237. W--Enameled Crocus Variant tumbler--scarce
 _____ 238. Deep M--Tiger Lily tumbler--flared top
 _____ 239. M--N Acorn Burrs tumbler
 _____ 240. M--N Grape and Gothic Arches tumbler--super nice
 _____ 241. Lavender--Crider Lily of the Valley tumbler
 _____ 242. Scarce W--Palm Beach water pitcher--base roughness
 _____ 243. Smoke--Imp Lustre Rose 11" round, flared centerpiece bowl--a beauty
 _____ 244. W--Fenton Peacock at Urn ruffled compote

 **OUR UPCOMING EVENTS!**

**Don't forget our New Years
18th Carnival Glass
Extravaganza**

Date: Saturday, January 10, 2009

Time: 9:00 a.m.

Location: Our Auction Gallery

**Still taking a few QUALITY items for
this **BIG EVENT!****

- _____ 245. P--Imp Lustre Rose 10 3/4" round, flared centerpiece bowl--
electric
- _____ 246. W--Dugan Fanciful 9 1/4" low ruffled bowl--pastels deluxe
- _____ 247. P--Imp Grape 11 1/2" ruffled bowl--striking color
- _____ 248. W--N Fine Cut and Roses candy dish--Fancy interior--pinks
and blues
- _____ 249. P--Imp Grape 9 1/4" low ruffled bowl--very nice
- _____ 250. W--Dugan Persian Garden 6" ICS bowl--Knockout pastels
- _____ 251. P--Imp Open Rose 8" ruffled bowl--electric hues
- _____ 252. W--Dugan Grape Delight rosebowl--normal feet
- _____ 253. P--Imp Shell and Sand 7 1/2" ruffled bowl--Good looking
item
- _____ 254. W--N Drapery 7 1/4" tri-corner bowl/candy dish
- _____ 255. P--Imp Hattie 9" ruffled bowl--good eye appeal
- _____ 256. W--N Beaded Cable rosebowl--frosty and colorful
- _____ 257. P--Imp Pansy 9 1/4" ruffled bowl--colorful inside and out
- _____ 258. W--Dugan Grapevine Lattice 7" ruffled bowl
- _____ 259. P--Imp Cobblestone 9" ruffled bowl--glowing electric hues
- _____ 260. Clambroth--Imp Lustre Rose 10 3/4" bowl--plain interior
- _____ 261. P--Imperial Grape 9 1/2" deep, round bowl--splendid
iridescence
- _____ 262. W--Dugan Persian Garden 6" ICS bowl
- _____ 263. P--Imp Scroll Embossed 9 3/4" plate--Magnificent electric
coloration
- _____ 264. W--N Peacock at Urn 5 1/2" ICS bowl
- _____ 265. AO--N Beaded Cable rosebowl--crack in foot
- _____ 266. B--N Good Luck PCE bowl--classic carnival iridescence
- _____ 267. Deep P--N Good Luck ruffled bowl
- _____ 268. Pastel M--N Peacocks ruffled bowl--couple of flawed tips
- _____ 269. P--N Peacocks PCE bowl--striking example
- _____ 270. G--N Peacocks ruffled bowl--scarce glass color

WATCH:  Web Site: www.AWK-SHN.com

271. M--N Peacocks 9 1/4" plate--Rib exterior
 272. M--N stippled Fruits and Flowers stemmed bonbon--tough to find stippled
 273. G--N Fruits and Flowers stemmed bonbon
 274. Elec B--N Fruits and Flowers stemmed bonbon
 275. Yellow Vas--Fenton Lotus and Grape bonbon--tough color
 276. M--Fenton Orange Tree 8" round, flared nut bowl--most unusual shape
 277. Honey Amber--Cosmos and Cane 4" round bowl
 278. M--N Wishbone footed, ruffled bowl--lots of color on this one
 279. Cobalt B--N Fine Rib 9 1/2" vase--fabulous color
 280. M--Imp Grape wines--4 x \$
 281. Rich M--Fenton Peacock at Urn 8 1/2" ruffled bowl
 282. P--N Fruits and Flowers 7 3/4" 2-sides up plate--always in demand
 283. G--N Grape and Cable Vt. 8 3/4" plate--BW exterior
 284. P--N Wild Rose 7" footed bowl
 285. Red Amberina--Fenton Holly 9" ruffled bowl--good looking bowl
 286. Red--Fenton Grape and Cable 8" collar base bowl--Top notch example
 287. Red--Fenton Acorns 7" round, flared bowl--tough to find
 288. Red--Fenton Persian Medallion bonbon
 289. W--Austrian art glass rosebowl with wire flower frog--beautiful pastels, outstanding
 290. Red--Dugan Royal Lustre candlesticks--pair
 291. Red--Dugan Royal Lustre 7" console bowl
 292. Red--Dugan Royal Lustre 6" rosebowl
 293. Art Glass Vase--white to red 13 1/2" vase, with rosebowl top--very unusual and attractive
 294. Art Glass Vase--white to red 13 1/2" vase with rosebowl top--slightly different iridescence
 295. G--Mlbg Four Pillars 10 1/2" vase--Gread radium colors
 296. Lav--N Diamond Point 10 1/2" vase
 297. Deep M--N Thin Rib 13 3/4" funeral vase--A nice one
 298. Custard w/ Nutmeg--N Drapery Variant 9 1/2" vase
 299. M--N Drapery 7" squatty vase--pumpkiny
 300. Rich M--N Drapery Variant 9" vase
 301. G--Fenton April Showers 11" vase
 302. M--9" Left Handed Hand vase
 303. Smoke--Imp Miniature Morning Glory 5" vase
 304. Pastel M--Dugan Big Basketweave 11" vase--Eye Candy!!!
 305. M--Colonial Lady Variant 8" pinched in vase
 306. M--Colonial Lady Variant 4" cuspidor shape vase
 307. PO--Dugan Wide Rib 4 3/4" squatty vase--6 1/4" top
 308. M--Sweet Pea Thin and Wide Rib 3 3/4" tall flower arranger--6 1/2" opening
 309. W--Palm Beach 4 3/4" bowl with Gooseberry interior
 310. G--N Three Fruits 9" plate--BW exterior
 311. M--N Three Fruits 9" plate--BW exterior, dark and nice
 312. M--Imperial Robin mug--old one
 313. Elec B--N Singing Birds mug
 314. Pastel M--N stippled Singing Birds mug
 315. AO--N Dandelion mug--lovely pastels
 316. A--Stork in the Rushes with Lattice Band mug--scarce color
 317. Red Amberina--Fenton Orange Tree shaving mug--prime example
 318. M Flash--cruet w/ diamond pattern neck and faceted stopper
 319. M Flash--9" basket w/ etched floral design
 320. P--Strutting Peacocks creamer and sugar with lids
 321. M--Louisa 5 1/2" banana boat shape berry dish
 322. P--Louisa 5 1/2" banana boat shape berry dish
 323. Smoke--Imperial Little Barrel--smoking color!
 324. P--Band pattern violet basket insert, made by Diamond
 325. Sapphire--Fenton Blackberry Spray four sides up hat--two sets of berries
 326. Scarce Amber--N Fine Cut and Roses candy dish--plain interior
 327. PO--Dugan Dogwood Sprays deep, ruffled, dome base bowl--scarce shape
 328. Lime Vas Opal--Fenton Water Lily ruffled, footed sauce--Super scarce item!!
 329. PO--Dugan Single Flower Framed 7 1/2" CRE plate--rayed interior
 330. Soft PO--Fenton Dragon and Lotus 9" ruffled bowl--lots of pinks and blues
 331. M--Orange Tree powder jar with lid--always in demand
 332. Ice B--N Beaded Cable rosebowl--hard to find color
 333. M--N Hearts and Flowers 9" ruffled bowl--lots of yellows and blues
 334. P--N Embroidered Mums 9" ruffled bowl--a crowd favorite!
 335. BA--N Grape and Cable Variant 8 3/4" ruffled bowl--plain exterior
 336. Rare Lavender Opal--Fenton Vintage (Grape) 6 1/2" round, flared bowl
 337. Ice G--N Fruits and Flowers 10" ruffled bowl--BW exterior--Beautiful blue highlights
 338. P--N Hearts and Flowers ruffled compote--purple is scarce
 339. AO--N Hearts and Flowers ruffled compote--Butterscotch overlay
 340. P--N Oriental Poppy tankard water pitcher--radium gem
 341. Dark M--N Grape and Cable butter dish w/ lid--hot pinks galore
 342. M--N Grape and Cable spooner--great example
 343. M--N Grape and Cable creamer
 344. G--N stippled Grape and Cable bonbon--scarce
 345. BA--N Grape and Cable hatpin holder--Very nice colors
 346. P--N Grape and Cable pin dish
 347. G--N Grape and Cable hatpin holder--electric all the way, good feet
 348. M--N Grape and Cable cologne bottle with stopper
 349. G--N Grape and Cable cologne bottle with stopper--great find
 350. Pink--LeVay 9" elephants foot Good Luck vase--whimsied from chop plate--mkd 1 of 1
 351. Cranberry Opal--Singleton Bailey JIP Poppy Show vase
 352. Blue--Singleton Bailey 16 3/4" swung Hobnail vase
 353. Ice Blue Opal--Singleton Bailey ruffled Poppy Show vase
 354. P--Slewed Horseshoe punch bowl--Dynamite color!!!
 355. Red--HOACGA 1979 Loving Cup
 356. B--Encore 1983 Grape Single Lily epergne
 357. B--Imp Lustre Rose Fernery bowl--marked IG
 358. Aqua--St Clair Hollyberry creamer--marigold overlay
 359. Yellow--LeVay 9" elephants foot Good Luck vase--whimsied from chop plate--mkd 1 of 1
 360. Blue--Imperial Nursery Rhyme mug with elephant head handle--marked IG
 361. B--Pilgrim Glass Nugget pitcher--square shape
 362. B--Pilgrim Glass Nugget pitcher--six paneled
 363. B--Pilgrim Glass Nugget pitcher--six divided panels
 364. Red--Smith Glass Octagon 8 1/2" round, deep bowl
 365. Ice B--Imperial Grape carnival stopper--contemporary
 366. P--Dugan Petal and Fan 6" CRE bowl--Jewelled Heart exterior
 367. P--Fishscale and Beads 6" CRE deep bowl
 368. B--Fenton Pepper Plant 6 3/4" fours sides up hat
 369. B--Beaded Stork in Rushes tumbler--outstanding
 370. M--Imp Fashion tumbler
 371. M--7" six sided candlesticks--pair, not Imperial
 372. M--Soda Gold candleholders--pair
 373. PO--Dugan Beaded Panels 6 1/2" tri-corner compote
 374. M--Imperial paneled, two handled oval relish dish
 375. M--Imp Flute and Cane sherbet
 376. M--Imp File sugar bowl lid
 377. G--Mlbg Hanging Cherries 7" ICS bowl--chip on base rim
 378. M--N Strawberry 9" plate--three chipped teeth

SEND ALL MAIL TO:

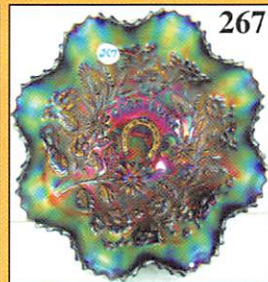
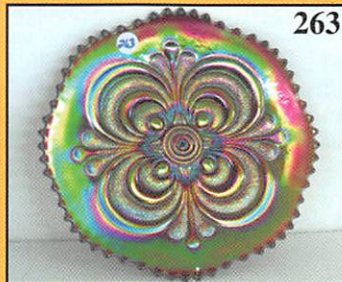
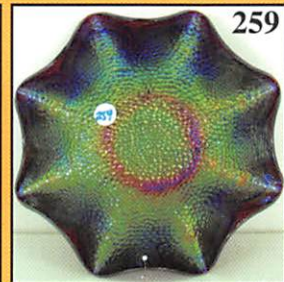
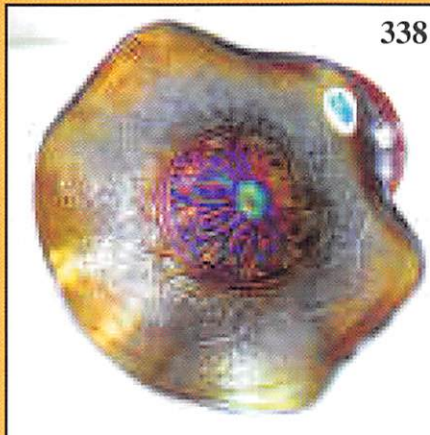
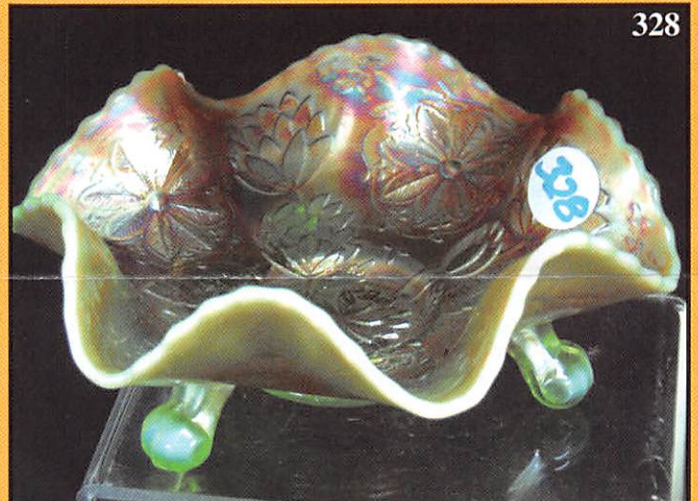
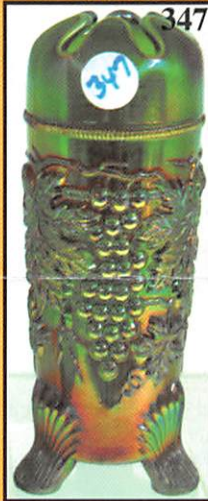
**18350 Hunters Ridge Ct.
Boonville, MO 65233**



CARNIVAL GLASS
Saturday, November 15
FRIDAY PREVIEW: November 14 - 12:



Fantastic
Very Affordable
Southern Mid-



GLASS AUCTION

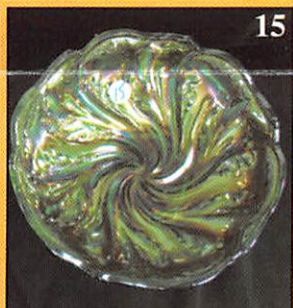
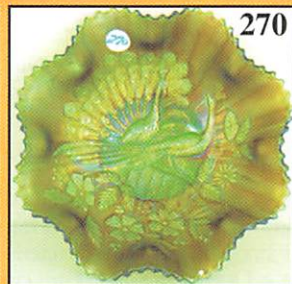
2008 - 9:00 a.m. Sharp

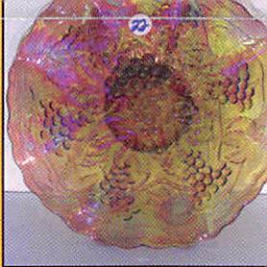
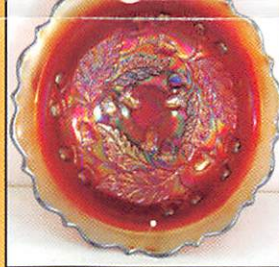
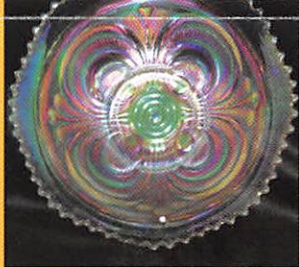
10:00 Noon - 5:00 pm & 7:30 a.m. Auction Day

Color In A

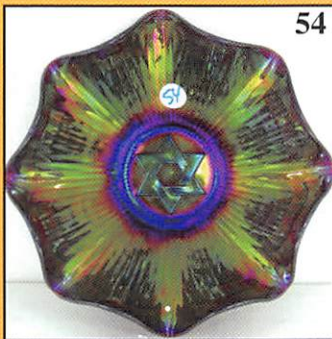
Wide Price Range.

West Collection





336



54



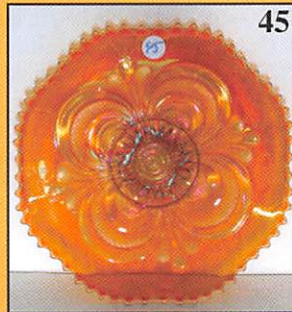
48



185



333



45



100



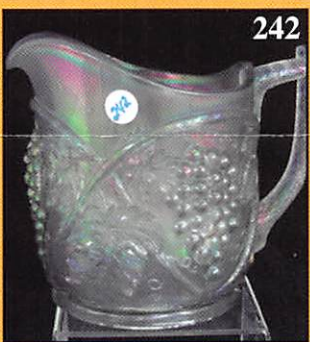
105



107



179



242



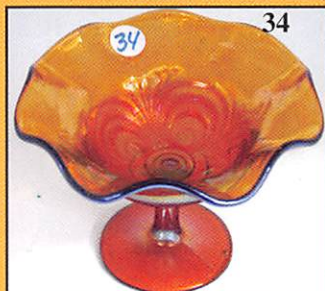
205



210



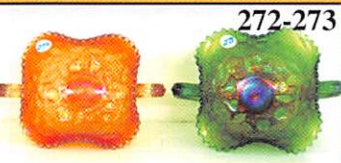
86



34



315



272-273



NO BUYERS

Make Reservations EARLY

Days Inn: 660-882-8624 • Comfort Inn: 660-882-5317

ABSENTEE P

PLEASE NOTE: There is a \$6 handling charge for each successful bid which will be added to packing. Your write-in bid will be entered just as if you are present and bidding. Successful bid (number). Direct mail bids to Auctioneer Mickey Reichel, 18350 Hunters Ridge Ct., Boonville, MO. References. Announcements made day of the auction supercede all printed material. Not Responsible for shipping.

Call for additional information: 660-882-5292

FAX: 660-882-5292 (evening hours)

E-mail: mreichel@AWK-SHN.com

Held Inside the Mickey

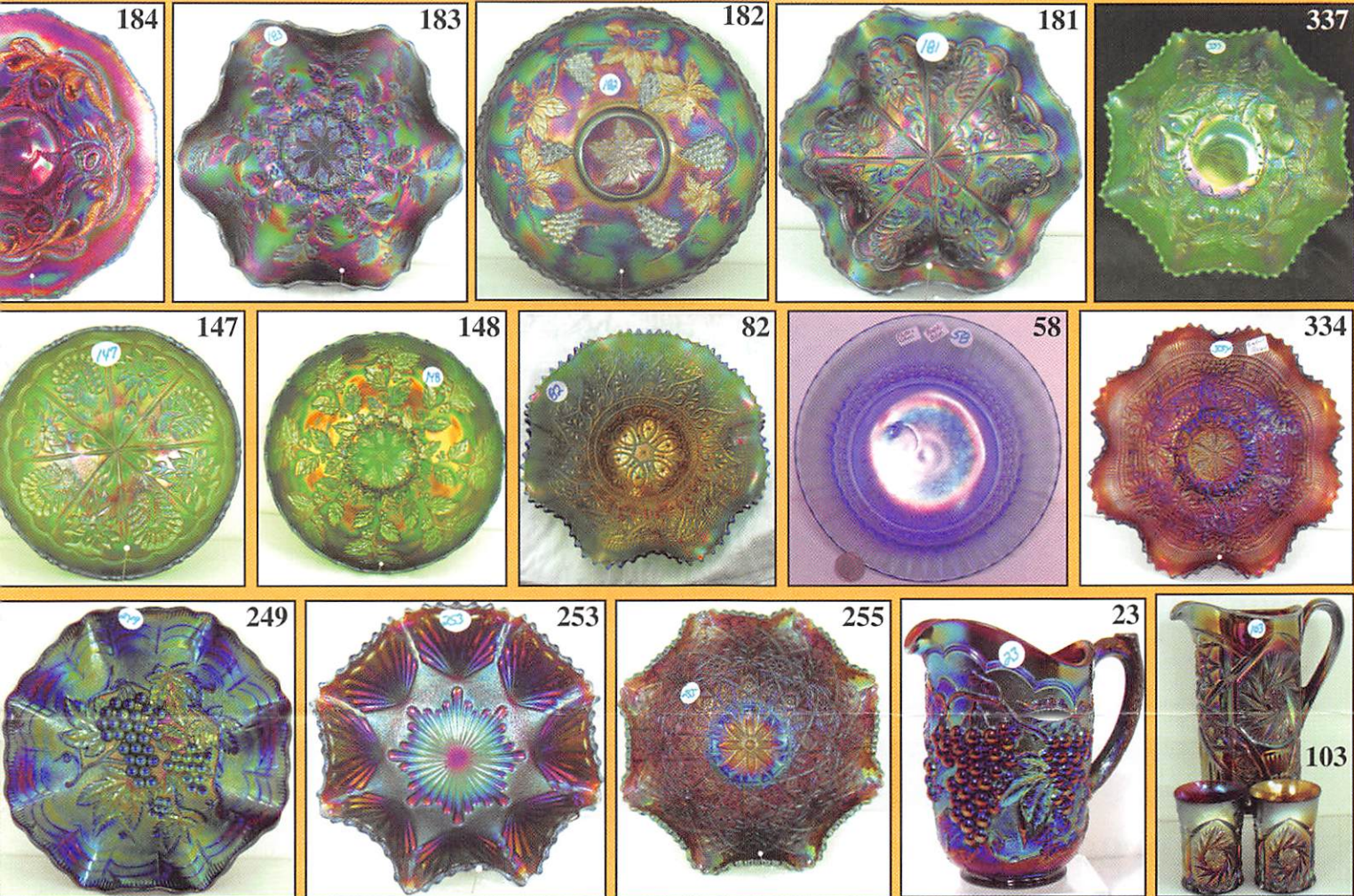
1 Mile North of I-70 on Hwy. 5, Exit 101, Boonville



TERMS: Cash or Good Check,

4% Clerking Fee on all purchases except for p

*** No return on any items once they leave



PREMIUM ★★
at one of these local motels:

Super 8: 660-882-2900 • Holiday Inn: 660-882-6882

ID POLICY:

to the selling price for all write-in bids. This is in addition to the cost of postage, insurance and
idders will be notified in 1 to 3 days by the auctioneer (so be sure to include your phone
MO 65233-2971. Terms: Cash or Check accepted with proper I.D. and Social Security Number and
le for Accidents or Sold Items. Call in Bids before Auction Welcome!
days or 660-882-5283 evenings before 9:00 p.m.

start FAX transmission after beep)
Web Site: www.awk-shn.com

Reichel Auction Center

Missouri • 20 Miles West of Columbia, MO on I-70

VISA and MasterCard accepted.



Payment of cash or check. Proper I.D. required.

at the Auction Center (No Exceptions) * * *



SEE REVERSE FOR DETAILS