

*Ninth Annual Sunshine State Carnival Glass Association Convention
Deerfield Beach, Florida Saturday, January 27th, 2007 – 9:30 a.m.
Featuring the Carnival Glass Collection of Bill & Sandy Reyan, Everett, PA*

251



71



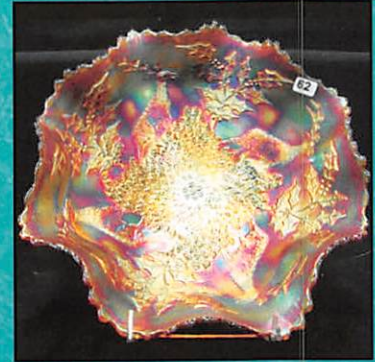
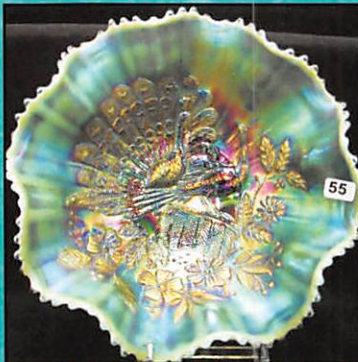
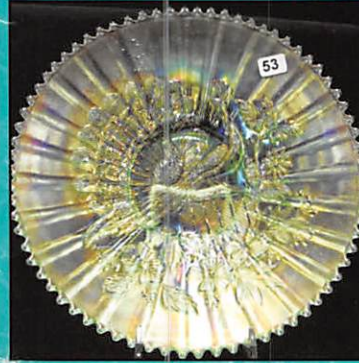
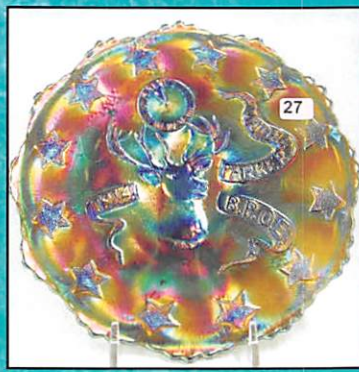
190

Jim Wroda Auction Services
POB 1111
Gettysburg, Ohio 45328
www.jimwrodaauction.com

PRESORTED
FIRST CLASS MAIL
U.S. POSTAGE
PAID
CELINA, OH
PERMIT NO. 99



23



SSCGA Carnival Glass Convention Auction

(This is a public auction. You do not need to be a member of SSCGA to participate in the auction.)

Saturday, January 27th, 2007 at 9:30 a.m.

Preview Friday, January 26th, 2007 at 7:00-9:30p.m. and Saturday morning at 8:00a.m. to auction time

Howard Johnson on Deerfield Beach

2096 N. E. Second Street, Deerfield Beach, FL 33441

(This is within 15 to 20 minutes of the Ft. Lauderdale Airport)

Telephone: 800-426-0084 or 954-428-2850

MAKE YOUR PLANS NOW!!!... For one heck of a start to the New Year! We will be offering, at public auction, the IMPRESSIVE collection of Bill and Sandy Reyan, Everett PA. at the SSCGA convention in Deerfield Beach, Florida! Rarity upon Rarity... color upon color... More RARE spitoons than you can spit at, and more rare advertising than any one collector should be allowed to have!!! This is truly an opportunity that doesn't present itself very often. The chance to own some of the items in this collection would be a great honor for you and your collection. I can't remember when this many unique items have been on the auction block at one time. Make your plans today for a great action packed week at the Sunshine State Carnival Glass convention! Lots of convention information available on their website at www.sscga.com. SSCGA is where you need to be, come the end of January! We hope to see all of you there.

If you cannot make it, but see some glass in the brochure you would like a chance at... Give Laurie a call at 937-447-4905 or 937-459-9562, she will be glad help you out! You can also visit our website at www.jimwrodauction.com. THANKS!!! Jim

*******Mail, E-mail, Phone, and Absentee Bids Policy:*******

1. Phone inquiries on items of interest are welcome! **937-447-4905 or 937-459-9562**
2. Bidders take full responsibility to honor any and all bids that are executed in your behalf.
3. All items to be paid for within 7 days of notification unless other arrangements are made prior to auction. Successful absentee bidders must also pay estimated shipping costs. NOTE: There will be a \$5.00 fee added, per item, to the price of all successful absentee bids plus postage and insurance.
4. All items bid competitively against the audience. **We do not start with your bid.**
5. Items will be bid on in **perfect condition** with average to above average iridescence unless otherwise stated or noted on your order of sale list or absentee bid sheet. **We will describe each item as accurately as possible!! (see listing)** **Bids will not be carried out if a damage is found during auction.** If manufacture problems bother you such as air bubbles, pulled points, soda ash, tool marks, or any other manufacturing flaw, please be specific in your mail bids or email bids. *If there is a manufacture flaw on an item that we feel is truly distracting, we have noted that in the listing already. Auction Company has the right NOT to execute an absentee bid for any reason.*
6. All bids can be called in to: **937-447-4905** faxed to 937-548-3492, or sent to POB 1111 Gettysburg Ohio 45328 You can also e-mail bids directly from our website and ask questions
7. **All mail, faxed, write-in, and email bids due by Wednesday, January 24th, 2007 – 3:00 p.m. (due to traveling!)**
8. **Anyone wishing to live phone bid, requests due by Monday, January 22rd, 2007 – 5:00 p.m.**
9. If someone in the audience is bidding for you they must pay for the item(s) before leaving. UNLESS other arrangements have been made prior to the auction.

NOTICE: Laurie will get your items to you as fast as she can but, PLEASE allow 2 to 3 weeks for your items to arrive AFTER payment has been received as we may be staying in Florida for a week or so. Thanks!

******To view more pictures on the web: www.jimwrodauction.com******

Terms and Conditions of Auction: Cash, Travelers checks, business or personal checks with proper I.D. We now have Visa and MC and Discover with a 3% clerk fee. All items being sold **AS IS WHERE IS with NO MINIMUM and NO RESERVE!** Everything sells to highest bidder.

******Please use the preview times WISELY! Look over your items of interest.******



Jim Wroda Auction Services

Jim Wroda and Mike Baker CAI – Auctioneers

Email: laurie@jimwrodauction.com

Laurie's mobile (if needed after weds.) 937-459-9562

Licensed by the State of Florida Jim Wroda license #AU3132 – Mike Baker license #AU3133

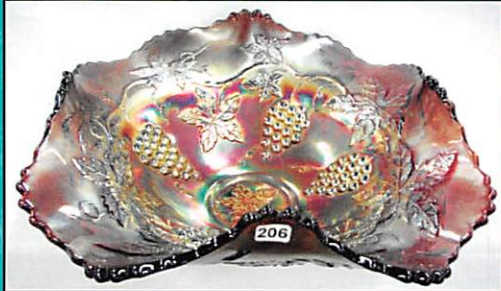
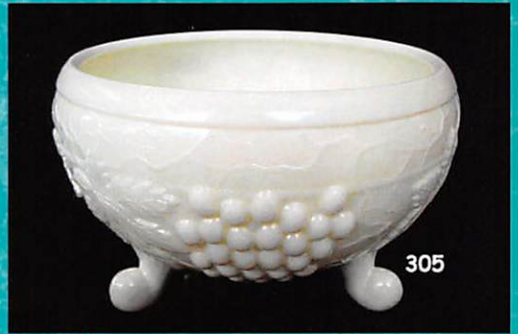
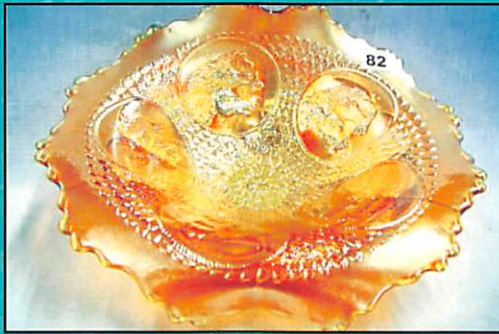
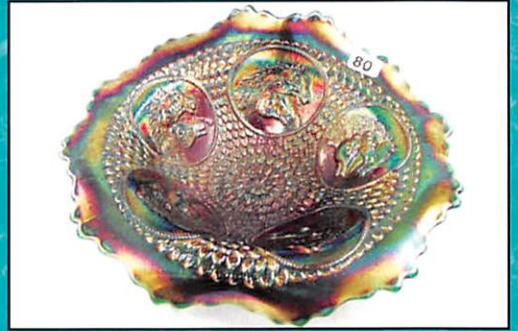


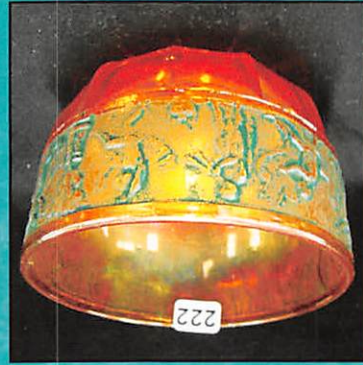
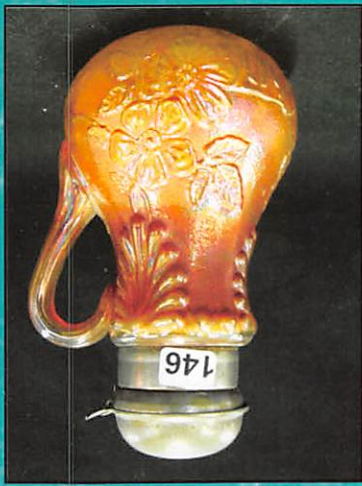
- 250 1. IMPERIAL ELEC PURPLE CHATELAINE TUMBLER. AWESOME!!!
- 145 2. M-burg tadium green Hanging Cherries tumbler-SUPER
- 1800 3. M-BURG RADIUM GREEN MULTI-FRUITS AND FLOWERS TUMBLER
- 85 4. Imperial smoke fashion tumbler-, SCARCE
- 240 5. Imperial purple Fashion tumbler-, SCARCE
- 135 6. Harvest Flower Mari Tumbler- A TOUGHIE
- 400 7. HARVEST FLOWER PURPLE TUMBLER- VERY RARE
- 1100 8. M-BURG RADIUM PURPLE MORNING GLORY TUMBLER. WOW!!! JACQUE P.
- 3000 9. IMPERIAL ELEC PURPLE CONE AND TIE TUMBLER. SUPER RARE
- 6000 10. US GLASS CO. OLIVE GREEN BIG BUTTERFLY TUMBLER. EXCEEDINGLY RARE TUMBLER.. HAS VERY NICE IRID. THIS IS DEFINITELY TOP SHELF!!
- 600 11. N-wood IB Peacock @ Fountain Sugar bowl. RARE
- 155 12. N-wood mari Peacock @ Fountain Sugar bowl.
- 165 13. N-wood elec purple Peacock @ Fountain spooner. Super color
- 185 14. N-wood white Peacock @ Fountain spooner
- 260 15. N-wood white Peacock @ Fountain creamer
- 135 16. N-wood green Singing Birds Creamer. RARE!
- 65 17. Fenton white Orange Tree creamer
- 145 18. US Glass mari Palm Beach Cr/ Sug set. Nice NEELSON
- 95 19. N-wood lavender Peacock @fountain punch cup.
- 75 20. N-wood IG ACORN BURRS PUNCH CUP.
- 80 21. N-wood Elec purple Oriental Poppy tumbler
- 125 22. 8 white Grape and Cable punch cups. 8 x money
- 24000 23. FENTON BLUE 1912 PORTLAND ELKS BELL. ONE OF THE MOST SOUGHT AFTER ONE OF A KIND ADVERTISING PIECES EVER. HAS A SUPER PRESSING AND IRID. ONE OF THE TOP FENTON RARITIES OF ALL TIME!
- 1200 24. FENTON BLUE 1911 ATLANTIC CITY ELKS BELL. VERY HARD TO FIND.
- 2200 25. FENTON BLUE 1914 PARKERSBURG ELKS BELL. SUPER PRESSING AND IRID.
- 1000 26. Fenton 7" blue 1911 Atlantic City Elks plate. Very scarce and nice!!
- 3100 27. FENTON 7" ELEC. BLUE 1914 PARKERSBURG ELKS PLATE. THE BEST EXAMPLE YOU'LL FIND. DEBBIE REMMEN CANNBYOR
- 475 28. Fenton 6" amy. 1910 Detroit Elks deep round bowl. Very scarce!
- 325 29. Fenton 6" amy 1910 Detroit Elks ruffled bowl. Very scarce with great detail.
- 990 30. Fenton 6" green 1910 Detroit Elks ruffled bowl. Silvery but very scarce.
- 475 31. Fenton 6" blue 1910 Detroit Elks ruffled bowl. Scarce.
- 450 32. Fenton 6" blue 1911 Atlantic City Elks ICS bowl. Super!
- 375 32A ELKS CARNIVAL GLASS BEADED PURSE ROGER

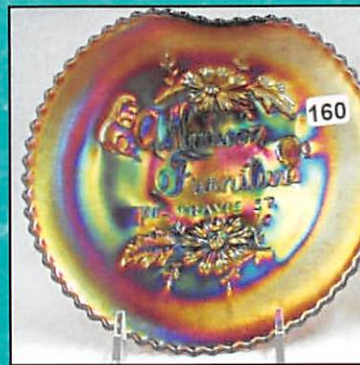
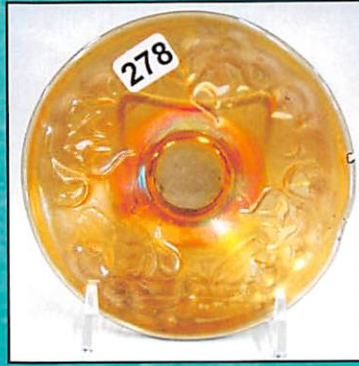
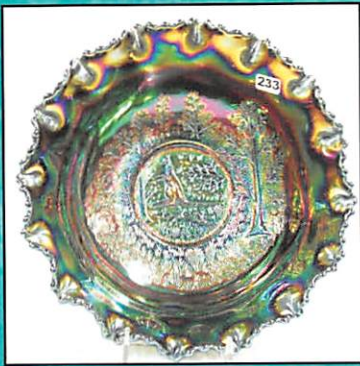
- 6500 33. DUGAN ELEC. PURPLE ELKS RUFFLED NAPPY. UNBELIEVABLY GORGEOUS. BRIGHT BRILLIANT ELEC. IRID.!!!! THE ELK STOPS HERE! *****HERE IS A GREAT OPPORTUNITY TO BUY FROM ONE OF THE FINEST ELKS COLLECTION YOU'LL FIND OUT THERE! JOEY MAX.
- 150 34. Extremely rare 1908 Shriner's Temple Pittsburgh ruby flash & gold toothpick. Made by U.S. Glass. The only one I've ever seen. MARIE CAPS
- 250 35. N-wood IB Beaded Cable rosebowl. Scarce
- 160 36. N-wood AO Beaded Cable rosebowl. Scarce
- 160 37. N-wood elec blue Beaded Cable rosebowl. Pastel!
- 55 38. N-wood green Beaded Cable rosebowl.
- 275 39. N-wood IB Drapery rosebowl. Fairly rare. Nice
- 170 40. N-wood white Drapery rosebowl. Scarce
- 185 41. N-wood AO Drapery rosebowl. Very pastel.
- 145 42. N-wood elec blue Drapery rosebowl.
- 150 43. N-wood purple Drapery rosebowl
- 2100 44. N-wood DARK IB RASPBERRY WATER PITCHER. HOLY SMOKES THIS IS HOT!!! RARE TO FIND ONE LIKE THIS!
- 75x6 45. 6- N-WOOD IB Raspberry tumblers. 6 x money. All nice
- 1800 46. N-WOOD WHITE PEACOCK AT FOUNTAIN 7 PC WATER SET. VERY HARD TO FIND SET! 10
- 47. N-wood mari Peacock at Fountain 7pc water set.
- 485 48. DUGAN BLUE 7PC GOD AND HOME WATER SET. EXTREMELY RARE WATER SET. VERY NICE COLOR AND DETAIL! 1100
- 700 49. CAMBRIDGE GREEN INVERTED FEATHER WHIMSEY CARD TRAY MADE FROM A CRACKER JAR BOTTOM. SUPER RARE... ONLY 2 OF THESE REALLY COOL PIECES KNOWN TO EXIST!
- 135 50. Cambridge green Inverted feather cracker jar.
- 800 51. N-wood 9" IB PEACOCKS PLATE W/PLAIN BACK. VERY RARE W/ KILLER IRID!
- 225 52. N-wood 9" White Peacocks plate w/rib back. Very nice!
- 375 53. N-wood 9" IG Peacocks plate w/rib back. Another pretty plate
- 275 54. N-wood 9" purple Peacocks plate. Has nice elec highlights.
- 1250 55. N-wood 9" AO Peacocks ruffled bowl. Here is a nice bowl!! Scarce Elliott
- 225 56. N-wood 10" White Peacock at Urn ICS bowl. Very pastel!
- 200 57. N-wood 10" purple Peacock at Urn ICS bowl.
- 625 58. N-wood 10" pumpkin mari. Peacock at Urn ICS bowl. WOW!!
- 660 59. N-wood WHITE PEACOCK AT FOUNTAIN PUNCH SET W 8 CUPS. VERY RARE AND SUPER PASTEL IRID. NOT MANY AROUND CHRISTMAS
- 1000 60. N-wood purple Peacock at Fountain punch set w/ 6 cups. Very pretty set!
- 650 61. N-wood purple Acorn Burrs punch set w/ 6 cups. Scarce. Has small chip on side of bowl.

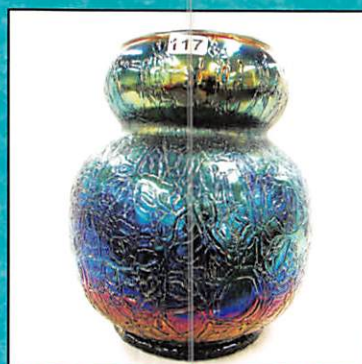
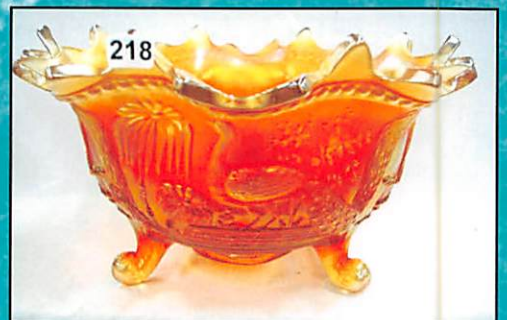
- 775 62. Fenton 10" RED W/YELLOW STREAKS STAG & HOLLY FT'D RUFFLED BOWL. VERY RARE COLOR NOT OFTEN SOLD. THIS BOWL IS REALLY NEAT W/ RED/YELLOW AND AMBER STREAKS.
- 200 63. Fenton 10" pastel mari Stag & Holly ft'd ruffled bowl.... KILLER IRID! *chip base*
- 225 64. Fenton 9" elec blue Stag & Holly ft'd deep ruffled bowl. Very nice! *Neutrons*
- 550 65. Fenton 11" mari Stag & Holly chop plate. Super dark irid on a hard to find chop plate. *GOT 1*
- 120 66. Fenton 10" dark mari Chrysanthemum ft'd ruffled bowl. Nice!
- 250 67. FENTON 10" GREEN STAG AND HOLLY FT'D ICS BOWL. VERY RARE! HAS *GOT 1* REALLY NICE IRID AND DETAIL!
- 250 68. FENTON 10" ELEC BLUE STAG & HOLLY FT'D ICS BOWL. WOW!! WHAT A BEAUTY
- 55 69. Fenton 10" black amy Stag & Holly ft'd ICS. Rare bowl. bit silvery (*VERY SIL VERY*)
- 950 70. FENTON 6 1/2" BLUE STAG & HOLLY FT'D ROSEBOWL. ONLY ONE REPORTED THAT WE KNOW OF. TERRIFIC DETAIL AND PRESSING. ANOTHER FENTON RARITY *neiber*
- 550 71. Fenton 7" AQUA STAG & HOLLY FLARED SPATULA FT'D NUT BOWL. EXTREMELY RARE. ONLY ONE WE KNOW OF.
- 150 72. Fenton 7" GREEN STAG & HOLLY FLARED SPATULA FT'D NUT BOWL. EXTREMELY *GOT 1* RARE. AGAIN...ONLY ONE WE KNOW OF. *Dobson*
- 1000 73. Fenton 9" BLUE DRAGON & LOTUS PLATE. VERY RARE! HAS NICE DETAIL.
- 500 74. Fenton 9" AMY OPAL DRAGON & LOTUS RUFFLED BOWL. ANOTHER RARE ITEM. Has a *tiny pin flick* on point.
- 225 75. Fenton 9" mari Peacock at Urn plate. Pretty irid.
- 1150 76. Fenton mari. Mikado compote. Nice bright irid. you'll like this one!
- 1500 77. Fenton 6" RED SLAG HORSE HEAD MED. FT'D NUT BOWL. VERY RARE PIECE!
- 275 78. Fenton 6" VASELINE HORSE HEAD MED. FT'D NUT BOWL. GLOWS WITHOUT A LIGHT!!!
- 875 79. Fenton AQUA HORSE HEAD MED. FT'D ROSEBOWL. VERY RARE COLOR AND NICE!
- 300 80. Fenton SEA GREEN HORSE HEAD MED. JIP FT'D BOWL. RARE COLOR OF GREEN!
- 55 81. Fenton blue Horse Head med. JIP ft'd bowl. nice
- 200 82. Fenton vaseline Horse Head Med. JIP ft'd bowl. Very scarce
- 125 83. Fenton amber Horse Head Med. JIP ft'd bowl. Scarce
- 95 84. Fenton mari Horse Head med. 5" round bowl
- 325 85. N-wood lime IG Corn vase w/ stalk base. Scarce color. Nice
- 325 86. N-wood purple Corn vase w/ stalk base. Nice
- 225 87. N-wood white Corn vase. Frosty irid
- 250 88. N-wood IG corn vase. Pastel irid.
- 5000 89. N-wood GREEN IVY TOWN PUMP. VERY RARE COLOR. GREAT DETAIL. *DOTY-4000-5600*
- 800 90. N-wood IB DAISY & DRAPE FT'D VASE W/TURNED IN TOP. RARE COLOR.
- 125 91. N-wood White Daisy & Drape ft'd vase with turned in top. Scarce
- 135 92. N-wood white Daisy & Drape ft'd vase.
- 110 93. N-wood IB Fine Cut & Roses rosebowl. Scarce
- 90 94. N-wood purple Fine Cut & Roses rosebowl
- 75 95. N-wood blue round Bushel basket. NICE!
- 375 96. US GLASS PURPLE COSMOS & CANE VOLCANO SHAPE NOVELTY. EXTREMELY RARE COLOR FOR THIS!
- 150 97. US Glass white Cosmos & Cane miniature punch bowl shape. RARE!!!! *MaryLou-Jackie*
- 160 98. US Glass white Cosmos and Cane tumbler.
- 800 99. FENTON 9" RED DRAGON & LOTUS ICS BOWL. VERY SCARCE!. HAS JUST A TAD BIT OF YELLOW IN BASE. A REALLY NICE EXAMPLE.
- 725 100. Fenton 9" RED Holly 8 ruffled bowl. Heres a good one!! *Lloyd*
- 375 101. Fenton 8" RED Peacock & Grape ft'd ruffled bowl. Feet are more amberina. Nice detail
- 70 102. 4" RED stretch 2 sided hat. Polished pontil. SUPER!
- 50 103. RED 6" Tumbler...
- 650 104. Fenton RED 5" Waterlily ft'd sauce. Very Scarce
- 625 105. Fenton RED 5" Panther ft'd sauce. Great example of a hard to find piece.
- 225 106. Fenton 6" RED 2 sides up Blackberry Spray hat.
- 160 107. Fenton 5" RED OE ruffled basket
- 150 108. Imperial frosted crystal Poppy Show vase.
- 575 109. Imperial DARK MARI POPPY SHOW VASE. OUTSTANDING BLUE IRID!
- 400 110. Imperial elec purple Poppy Show vase. An absolute top example but it does have a large chip on the top. I'm sure when you see it you will give it a good home!!
- 6000 111. HOLD ON TO YOUR HORSES BOYS!! Imperial ELECTRIC SMOKE POPPY SHOW VASE. THIS HAS TO BE THE BEST PIECE OF SMOKE IMPERIAL EVER MADE. *Hurst*
- 625 112. Imperial smoke Zipper Loop oil lamp w/ 6 1/2" base. Very Scarce, UNBELIEVABLE IRID. *No*
- 400 113. Imperial smoke Zipper Loop oil lamp w/ 5" base. Very Scarce, Great Irid. *No*
- 200 114. Imperial mari. Zipper Loop oil lamp w/ 6 1/2" base. *No*
- 5600 115. Imperial ELECTRIC PURPLE 474 WATER PITCHER. KILLER IRID ON A RARE PITCHER!!! BRING YOUR WELDING MITTS TO PICK THIS ONE UP WITH!!! IT'S HOT!!!!!!! *3000-4000*
- 3500 116. DUGAN DIAMOND 12" PURPLE FILIGREE VASE. ONLY ONE KNOWN. OUTSTANDING ELECTRIC IRID ON A KILLER VASE! BEAUTIFUL!
- 725 117. DUGAN DIAMOND ELEC PURPLE CRACKLE VASE W/ HYACINTH TOP. WOW! TREMENDOUS LOOKING PIECE OF GLASS!

- 50 118. DUGAN? PURPLE 5" PINCHED TOP VASE WITH MELON RIBBED EXT. NICE!
- 2000 119. M-burg 7" RADIUM PURPLE UNLETTERED COURTHOUSE RUFFLED BOWL. VERY RARE AND ONE OF THE BETTER EXAMPLES!! A KEEPER!!
- 525 120. M-burg 7" radium purple Courthouse ruffled bowl. Another beauty!
- 5000 121. M-burg PURPLE DIVING DOLPHINS COMPOTE. VERY RARE! SUPER RADIUM IRID. FANTASTIC PIECE OF GLASS!!
- Agg 1400 122. M-burg 10" purple Seaweed 3-1 edge bowl! *collor loose ship*
- 85 123. M-burg 7" radium purple Hanging Cherries ruffled bowl. Scarce size
- 175 124. M-burg 7" green Little Stars ruffled bowl.
- 50 125. M-burg 7" green Blackberry Wreath CRE bowl
- 45 126. M-burg 7" rad. Purple Blackberry wreath bowl.
- 55 127. M-burg 9" rad purple Blackberry Wreath bowl.
- 80-10 325 128. M-burg 8 1/2" mari Big Fish 3-1 edge bowl.
- " 375 129. M-burg 8 1/2" lavender Trout & fly 3-1 edge bowl. RARE BOWL!!! *DoT4 525-700*
- 60 130. M-burg 5" purple Peacocks berry bowl.
- 925 131. M-burg mari Multi Fruits & Flowers punch set w/4 cups. Scarce!
*****WE ARE ABOUT TO START ONE OF THE FINEST CARNIVAL GLASS SPITTOON AUCTIONS THAT YOU WILL EVER SEE!! BILL IS VERY PROUD OF THESE, AS HE SHOULD BE. HE HAS TRAVELED MANY MANY MILES TO ACQUIRE SOME GREAT RARITIES. MOST ARE ONE OF A KINDS AND ALL HAVE SUPER IRID AND COLOR!! GOOD LUCK!!*****
- 14,000 132. M-burg MARIGOLD DIAMONDS WHIMSEY SPITTOON MADE FROM A TUMBLER. ONLY ONE KNOWN... KILLER RADIUM IRID!! *STALEY W/FLCS*
- 14,000 133. M-burg MARIGOLD FEATHER AND HEART WHIMSEY SPITTOON MADE FROM A TUMBLER. ONLY ONE KNOWN. SUPER RADIUM BLUE AND YELLOW IRID. WOW!
- 2,700 134. Fenton MARIGOLD LATTICE AND GRAPE WHIMSEY SPITTOON MADE FROM A TUMBLER. GREAT DETAIL AND COLOR. RARE!!! HAS ORIGINAL DOCUMENTATION OF HISTORY *JUDY MAY*
- 1400 135. Fenton MARIGOLD WREATH OF ROSES WHIMSEY SPITTOON MADE FROM A ROSEBOWL. SUPER RARE. ONLY ONE WE KNOW OF. ONE OF MANY FENTON EXTREME RARITIES IN THIS AUCTION.
- 6700 136. Fenton MARIGOLD ORANGE TREE WHIMSEY SPITTOON MADE FROM A POWDER JAR BOTTOM. BEAUTIFUL!! *JUDY MAY*
- 4,000 137. N-wood GREEN GRAPE AND CABLE WHIMSEY SPITTOON MADE FROM POWDER JAR BOTTOM. SUPER RARE NORTHWOOD ITEM. HAS A SMALL NO HARM INTERNAL LINE AROUND BASE.
- 4,000 138. MARIGOLD VINTAGE WHIMSEY SPITTOON MADE FROM A BERRY BOWL. VERY RARE *STALEY W/FLCS*
- 1400 139. Fenton AMBER WIDE paneled WHIMSEY SPITTOON MADE FROM A BERRY BOWL. ONLY ONE KNOWN.
- 375 140. N-wood BLUE GROUND CHERRIES WHIMSEY SPITTOON MADE FROM A TUMBLER. ANOTHER NORTHWOOD ONE OF A KIND! *NO CHERRIES PAINTED ON IT.*
- 725 141. Imperial MARIGOLD MINIATURE GEOMETRIC SPITTOON. A SUPER RARITY FOR IMPERIAL. WHAT A GREAT MINIATURE!!! *CHAPMAN*
- 375 142. RIIHIMAKI AMBER STARBURST SPITTOON. A VERY RARE WHIMSEY MADE FROM A BERRY BOWL. *neilsons*
- 300 143. Imperial MARI RIB AND PANEL SPITTOON RARE
- 350 144. MARI 4" OPEN LACED EDGE FLORAL ETCHED SPITTOON
- 100 145. Fenton mari 4" interior rib spittoon
- 675 146. West. mari Wild Rose syrup getting very hard to find
- 175 147. M-burg mari Hobnail rosebowl. Radium
- 135 148. M-burg mari Hobnail Swirl rosebowl
- 325 149. M-burg purple Hobnail Swirl rosebowl. Radium
- 25,400 150. FENTON 7" BLUE SOLDIERS AND SAILORS MONUMENT INDIANAPOLIS, IND. ICS BOWL. EXTREMELY RARE ONE OF A KIND BOWL. VERY PRIZED TO COLLECTORS! HERE IS AN AWESOME OPPORTUNITY! HAS REALLY COOL MAUVE IRID OVER BLUE IRID. NEAT! *JACKIE*
- 2000 151. FENTON 9" PURPLE BIRMINGHAM AGE HERALD PLATE. THE NICEST ONE WE HAVE EVER SOLD!
- 2050 152. Fenton 7" Blue Illinois Soldiers and Sailors plate. Killer pressing and irid. RARE
- 1200 153. Fenton 7" mari Illinois Soldiers and Sailors 2600-plate. Another great plate! Very dark! *23-3000*
- 3000 154. Fenton AMY 6" ROOD'S CHOCOLATES PLATE. SUPER MULTI-COLOR RAINBOW IRID. EXTREMELY RARE ADVERTISING PLATE! *JAM SK.*
- 700 155. N-wood purple 6" Eagle Furniture flat plate.
- 1300 156. Fenton 6" purple Geo. W. Getts Pianos plate.
- 600 157. Fenton 6" purple Norris Smith RE & Ins. Plate. RARE and pretty *chip*
- 750 158. Fenton 6" purple Exchange Bank plate. VERY RARE ADV. PLATE
- 3000 159. Fenton 6" purple Gevurtz Bros. Furniture and clothing plate. Super bright yellow irid. ANOTHER TOP ADV. PLATE AND A BEAUTY!!! *Steele*
- 1100 160. N-wood 6" purple EA Hudson HG plate. SCARCE
- 1500 161. N-wood 6" purple Jockey Club HG Plate. SCARCE
- 1700 162. Fenton 5" purple Sterling Furniture Co. round bowl. NOT MANY OF THESE AROUND!
- 475 163. Fenton 5" purple Geo. W. Getts Pianos round bowl. VERY SCARCE









- 1074-300-400
LIME GREEN
- 450 164. N-wood 6" lavender Dreibus Parfaits Sweets ruffled bowl. WOW!
- 2000 165. FENTON 5" PURPLE GREETINGS DORSEY & FUNKENSTEIN FINE FURNITURE RUFFLED BOWL. RARE!
- 750 166. MARI BEETLE CRISTALERIAS RIGOLLEAU BUENOS AIRES ASH TRAY. SUPERRARE! NICE DARK IRID.
- 675 167. BLUE BEETLE CRISTALERIAS RIGOLLEAU BUENOS AIRES ASH TRAY. SUPER RARE! MAYBE THE FIRST TIME 2 OF THESE IN SAME AUCTION
- 155 168. 3 ADVERTISING OE BASKETS. Millers/Brand/Feldman furniture. All one money
- 65 169. Mari 7" Bell Aire Good Will tour adv. Bowl.
- 135 170. N-wood 10" Green 4 Pillars vase w/Howard furniture adv.
171. N-wood 9" ELEC BLUE POPPY SHOW PLATE. A TREMENDOUS EXAMPLE! A KEEPER FOR SURE! PIN HEAD ON BOTTOM
- 700 172. N-wood 9" elec blue Rose Show plate. Super irid. has a no harm tiny chip on one rose.
- 650 173. N-wood 9" It amy Rose Show plate. Super color!! Some would call this amber.
- AMIE CAPS 1650
- 3000 173a. N-wood 9" GREEN Rose Show plate. Here is a rare plate with very nice irid! BLUE HILL TOM MARDINI
- BRASSEL 173B. N-WOOD 9" PASTEL MARI. ROSE SHOW PLATE. HERE IT IS, THE ONLY ONE YOU WILL EVER WANT TO OWN!! THIS THING IS SMOKIN! What a plate!!
- 700 173c. N-wood 9" IB Rose Show plate. Super pastel irid on a hard to get plate!!! FLAITE ON RASE
- 850 173d. N-wood 9" mari. Poppy Show plate. Absolutely poppin' with color!!
- 2000 173e. N-wood 9" AO Three Fruits plate. WOW! FRUIT WORN
- 325 173f. N-wood 9" lavender Three Fruits plate. GOT IT STIPPLED
- 1200 173g. N-wood 9" elec. blue Peacocks stippled plate. This thing is on fire!!!
- 1000 173h. N-wood 9" IB Hearts & Flowers plate. Very rare a super example of a hard to get pastel plate!!
174. N-wood 9" LIME IG 3 FRUITS STIPPLED SPATULA FTD BOWL. Very nice!
- 2450 175. N-WOOD 9" IG GREEK KEY RUFFLED BOWL. PROBABLY THE RAREST COLOR FOR THIS AND HERE IS A GOOD ONE!! POPS SAGE
- 475 176. N-wood 9" green Grape & Cable stippled plate. Nice RIBBED BACK
- 125 177. N-wood elec. blue Poppy pickle dish. Scarce
- 155 178. N-wood purple Lovely ft'dbowl. Really nice one!
- 250 179. N-wood 8 1/2" dark mari Good Luck ruffled bowl. THIS IS NEAT!
- 200 180. N-wood 9" green Good Luck PCE bowl w/BW back. Scarce
- 275 181. N-wood 9" purple Good Luck plate w/ BW/back
- 80 182. N-wood 9" purple 3 fruits plate w/plainback
- 175 183. N-wood 9" green 3 Fruits plate w/BW back.
- 100 184. N-wood 6" purple Peacock at Urn low ICS bowl. When you see this you will call it a plate
- 235 185. N-wood purple Grape & Cable pin tray
- 575 186. N-wood elec green Grape & Cable dresser tray.
- 150 187. N-wood purple Grape & Cable dresser tray
- 65 188. N-wood 9" mari Drapery vase w/round top.
- 375 189. N-wood 7" IG Drapery vase. NICE!
- 145 190. N-wood 8" Lime IG Drapery vase. Scarce color
- 150 191. N-wood 7" dark mari Drapery vase
- 195 192. N-wood 4 1/2" white Drapery squatty vase. Very Rare size. NOT A CANDY DISH!
- 425 193. N-wood 4" purple Drapery Squatty vase. Another Very RARE size. 3 ft hood clips
- 285 194. N-wood purple Grape & Cable candlelamp.
- 250 195. N-wood AO Dandelion mug. Nice
- 110 196. N-wood mari Dandelion Knights Templar mug. Scarce
- 70 197. Dugan mari Fisherman's mug. Very pretty
- 40 198. 2- Dugan purple Fisherman's mugs. 2 x money
- 135 199. Fenton blue Orange Tree shaving mug.
- 1300 200. Fenton aqua blue Orange Tree mug. Scarce
- 200a FENTON 9" BLUE LITTLE DAISIES RUFFLED BOWL. VERY VERY RARE! HAS BEAUTIFUL MULTI COLORED IRID. Has a small chip on a flute, but find another one for sale!
- 200b FENTON 9" MARIGOLD LITTLE DAISIES RUFFLED BOWL. ANOTHER RARE BOWL WITH GREATR COLOR AND DETAIL. LOOKS LIKE FIREWORKS!!
- 30,000 Jackie 201. Fenton 9" GODDESS OF HARVEST RUFFLED BOWL. A TOP PRIZED PIECE FOR ANY CARNIVAL COLLECTOR. 400,000 ONLY 6 OR 7 KNOWN IN ANY COLOR. BEAUTIFUL DETAIL AND IRID.
- 275 202. Fenton WHITE MIRRORED LOTUS ROSEBOWL. SUPER FROSTY PASTEL IRID ON A RARE ROSEBOWL!
- 250 203. Fenton MARIGOLD MIRRORED LOTUS ROSEBOWL. ANOTHER RARE ROSEBOWL. NOT MANY AROUND
- 150 204. Fenton Blue 5" Mirrored Lotus ruffled bowl.
- 155 205. Fenton mari. 5" Mirrored Lotus ruffled bowl. Scarce
- 400 206. Fenton PURPLE WREATH OF ROSES FLARED PUNCH BOWL OR FRUIT BOWL. THIS IS A PUNCH TOP PULLED DOWN ON FOUR CORNERS. VERY RARE ONLY ONE IN THIS COLOR. HAS THE VINTAGE INT N-WOOD GREEN GREEK KEY 7-PIECE WATER SET VERY RARE!!! Pd- 5000
- 1400 207. N-wood purple Oriental Poppy Tankard
- 275 208. Dugan mari 6 piece Harvest Flower water set Extremely rare and really pretty. Small line around the handle.
- 2600 209. Imperial smoke Fashion 5 pc water set. Rare
- 475 210. Fenton white Zig-Zag Shasta daisy water pitcher
- 525 211. Inwald mari drapery var. 7 piece water set. Very rare complete waterset
- 425 212. Dugan pastel mari Quill Water pitcher. WOW!
- 325 213. Imperial ELECTRIC PURPLE 7 PIECE FIELD FLOWER WATER SET... VERY RARE!!!!!!!
- 400 214. Dugan purple Wreath Cherries 7 piece water set
- 550 215. Fenton mari enamled Freesia Tankard
- 75 216. N-wood blue Peacock at Fountian ftd. Fruit bowl w/ nice electric highlights NICE
- 775 217. N-wood dark mari Peacock at the Fountain ftd. Fruit bowl
- 200 218. Imperial? Smoke floral etched tumble up Very rare
- 110 219.

Ruth + Aly 11:30 Room 1115
27,500 bid - Jackie's 30,000

- 300 220. Dugan purple 6" cherries flat plate w/ CRE has great elec. highlights
- 50 221. Dugan 5" purple petal and fan CRE bowl
- 350 222. Mari Classic Arts nut bowl Very Scarce
- 35 223. Sourerby Diving Dolphins flared bowl
- 210 224. Camb. Purple Inv. Strawberry stemmed compote
- 160 225. 5" mari Woodlands Vase
- 25 226. European 3" mari African Shelid vase
- 55 227. European 5" mari Western Thistle vase
- 175 228. Australian rad. Purple Butterfly Bush Lg. ruffled compote
- 50 229. Australian rad. Purple Plain (blank) compote
- 275 230. AUSTRALIAN 10" RAD. PURPLE KOOKABURRA RUFFLED BOWL. RARE
- 200 231. Australian 10" rad. Mari King fisher round bowl
- 125 232. Australian 10" rad. Mari King fisher ruffled bowl
- 500 233. Australian rad. Purple Kangaroo ruffled bowl great detail
- 135 234. Australian 10" Thunderbird ruffled bowl
- 200 235. Australian 5" purple Kookaburra ruffled bowl
- 160 236. Australian 5" purple Kingfisher ruffled bowl
- 145 237. Australian 5" purple Kangaroo ruffled bowl
- 165 238. Australian 5" emu purple bowl
- 305 239. Australian 6" purple Butterfly and Bower small compote
- 250 240. Imperial 9" purple Open Rose plate Very scarce tiny nick on base
- 200 241. Imperial smoke Floral and Optic rose bowl Very Scarce Dolores Sage
- 600 242. Imperial mari. Flute and Cane candlesticks. Mari w/ a neat smokey irid.
- 135 243. Imperial 12" electric purple Free Fold Swung vase. SUPER
- 65 244. Imperial 8" smoke Acanthus ruffled bowl
- 170 245. N-wood electric purple Grape and Cable Sweetmeat
- 55 246. N-wood 7" purple G&C plate
- 110 247. N-wood 7" blue Fruit and Flower ruffled bowl
- 165 248. N-wood purple G&C hatpin holder
- 300 249. N-wood purple G&C stippled banana boat
- 115 250. N-wood mari 10" G&C ruffled bowl
- 190 251. Fenton dark mari Panther Master berry bowl 185-225
- 275 252. N-wood IB 8 1/2" Hearts & Flowers ruffled bowl. One of the best ones ever!!
- 170 253. N-wood IB Nippon PCE bowl. Nice pastel
- 275 254. Fenton 5" white OE round bowl.
- 85 255. Dugan 6" white Question marks stemmed plate
- 100 256. Dugan 9" white Round Up 3-1 edge bowl. Scarce
- 55 257. Dugan white Question Marks bon bon
- 125 258. N-wood white 6pc Peach Berry set. Very scarce
- 200 259. Dugan white 7pc Dahlia Berry set. Frosty!
- 195 260. US Glass white Palm Beach cider pitcher
- 90 261. US Glass white Palm Beach tumbler
- 65 262. US Glass white Palm beach mini rosebowl. Scarce
- 95 263. US Glass mari Palm Beach mini banana boat. RARE!
- 400 264. US Glass mari Palm Beach vase. RARE!
- 60 265. US Glass 5" mari Palm Beach 4 sided bowl
- 300 266. Dugan 10" PO Garden Path 10 ruffled bowl w/soda gold ext. . NICE!!!

- 130 267. Dugan 10" white Garden Path ruffled bowl w/ soda gold ext. Frosty pastel irid.
- 25 268. Dugan 7" white Six Petals ruffled bowl. NICE!!
- 50 269. Dugan 6" white Pool of Pearls plate. Scarce
- 35 270. N-wood 4 1/2" WHITE DRAPERY, BERRY OR DEEP ROUND BOWL. VERY RARE!!
- 25 271. N-wood white Fine Cut & Roses candy dish.
- 50 272. US Glass 5" white Cosmos & Cane square deep bowl. Rare shape.
- 25 273. Fenton 5" purple Panther round sauce. Very rare color *Shells*
- 55 274. Fenton 5" green Sailboats round bowl. RARE!
- 25 275. Fenton 5" green Butterfly & Berry ft'd sauce.
- 150 276. Fenton 9" blue Ribbon Tie 3-1 edge bowl. Nice
- 55 277. Fenton 5" vaseline blackberry spray ruffled hat
- 175 278. FENTON 5" AMY 4 KITTENS PLATE. RARE COLOR! *light*
- 210 279. Fenton mari 4 Kittens cup and saucer
- 185 280. Fenton powder blue 2 Kittens 4 side plate
- 50 281. Fenton mari 4 Kittens 4 side plate
- 400 282. Fenton 3" blue 4 kittens cereal bowl
- 175 283. Fenton 3" mari 4 kittens cereal bowl
- 115 284. Fenton blue 4 Kittens 4 ruffled toothpick
- 60 285. Fenton mari 4 Kittens 4 ruffled toothpick
- 55 286. Fenton mari 4 Kittens 5 ruffled toothpick
- 65 287. Fenton 4" mari Water Lilly vase ~~50~~
- 425 288. Dugan purple Butterfly & Tulip deep round bowl
- 325 289. Dugan purple Amaryllis tri-corner compote scarce
- 75 290. Imperial smoke Balloons etched vase
- 150 291. Robert Hansen Blue Maple Leaf Toothpick
- 260 292. Robert Hansen red tree trunk toothpick *odddest*
- 550 293. Robert Hansen red Eye winker spittoon rare
- 260 294. Terry Crider mari Wreath Cherries Spittoon only one made Super Color
- 335 295. Terry Crider White Stork and Rushes Spittoon 1 of 10 made Nice Frosty Irid
- 155 296. Terry Crider red Hanging Hearts Spittoon RARE
- 320 297. Red Elk's Paperweight and mari 1971 Elk plate
- 50 298. Carnival glass beaded change purse
- 128 299. Fenton mari kittens cup/4-side plate and toothpick. one money
- 80 x 1 300. Choice of several nice 5" & 6" bowls to include Mari. lions; (4) white persan garden; blue ftd. Orange tree; blue panther; (2) white peacock at urn; (3) purple peacock at urn; (3) purple inverted thistle. Selling choice. All are round or ICS
- 75 x 1 301. Fenton 8 1/2" green Orange Tree 3/1 edge bowl. Extremely rare color for this shape. Nice! *chip*
- 55 x 5 302. N-wood 8 1/2" IB Heart & Flowers ruffled bowl. Nice frosty irid. Scarce. *AQUA NO OVERLAY*
- 25 x 1 303. N-wood white G & C cracker jar. Super pastel irid. Scarce item!
- 25 x 1 304. N-wood 8 1/2" mari. Peacocks ruffled bow w/BW ext. SUPER!!!
- 135 305. N-wood pearl custard (iridized) G & C Banded centerpiece footed bowl.
- 275 306. FENTON 7" MARI. BLACKBERRY SPRAY OPEN EDGE 2-ROW PLATE. RARE!
- 95 307. Fenton celeste blue Stretch handled sandwich tray.

55 261 PUNCH CUP 261 C (2) ARE OR N BURLS PUNCH CUPS
25 261 PUNCH CUP

Thanks for participating in today's auction!!!

Jim Wroda Auction Services Carnival Glass Auction Calendar

2nd weekend - Now
with Jack & Bede
Free
info

Mark your calendars NOW for these Fantastic Auctions!!

January 13th 2007 9:30 AM.

**Just in!! Approx. 500 pieces of Carnival glass!
VASES-CANDLESTICKS-PLATES-BOWLS-AND
MORE! Details to follow on the website!!
We will also be having a very nice antiques auction
on the same day. 2 rings will be running at all times!
Midwest Auction Facility -Greenville Ohio**

January 27, 2007 9:30 AM

**Bill & Sandy Reyan of Everett, PA
Part 2 of this outstanding collection**

Several GREAT rarities to be in this auction including some of the finest Fenton items ever made, INCLUDING the Portland Elks Bell and Goddess of Harvest bowl, to an awesome spittoon collection. Please join us at the SSCGA convention for a great weekend!

**SSCGA Convention Auction
Deerfield Beach, FL**

Directions to the auction location at Howard Johnson on Deerfield Beach are listed below!

From I-95 South to Exit #42B or **I-95 North** Exit #42A (Hillsboro Blvd., East) Take Hillsboro Blvd. East for 2.7 miles over Intercoastal Waterway to Route A1A. Turn left (north) on Route A1A and go around first bend to right. Howard Johnson Beach Resort will be in front of you. Do not take bend to left, instead go straight toward beach and to right around hotel to main entrance on east (beach) side.

From Florida Turnpike: Exit Turnpike at Exit 75 Glades Road (Hwy. 808) and go east on Glades Road 3.5 miles to I-95 South. Take I-95 South 3.3 miles to Exit #42B-Hillsboro Blvd. And follow directions above.

Host Hotel:

Howard Johnson on Deerfield Beach

2096 N.E. Second Street

Deerfield Beach, FL 33441

20 miles north of Ft. Lauderdale

Telephone: 1-800-426-0084 or 954-428-2850

Other local hotel information:

Embassy Suites-Rt. A1A-954-426-0478

(sm. pets ok) Approx. 1/2 mile from Howard Johnsons

Holiday Park Hotel -Hillsboro Blvd.-954-427-2200

(sm. pets ok) 3 miles from Howard Johnsons

Comfort Inn-Rt. A1A-954-428-0650

3 min from Howard Johnsons

this is just for your information

**To view all of our other auctions please visit us at
www.jimwrodaauction.com**

Thinking about Selling?

Please give us a call to talk about your auction!

Still booking for the rest of 2007 and 2008.

See you at the auctions!

937-447-4905 or 937-447-8909

2 day Carnival Glass Auction

March 9th & 10th, 2007 4:00 PM

200 pcs. Millersburg Crystal

400 pcs. Carnival Glass Auction

We will start at 4:00pm on Friday with over 200 quality pieces of Millersburg Crystal and then On Saturday we will Start at 9:30am with over 400 pieces of Fantastic carnival glass. This collection boasts one of the finest elec blue Tree Trunk Funeral vases you will ever lay eyes on. Also 5 pieces of Millersburg vaseline and 6 pieces of blue. Rose columns vases and every odd shape Millersburg ever made! Then you get into some VERY RARE Northwood and nice Fenton. This is definitely a "sleeper" collection that you will have to see to believe!

Warren and Joan Place, Mehoopany, PA

Holiday Inn - Columbus Airport

Columbus, OH

April 28th, 2007 at 9:30am

HOACGA Convention

Carnival Glass Auction

Embassy Suites Hotel

Kansas City, MO

Well what can you say about this collection that you don't already know?? Just be there and be prepared for one exciting auction! Enough said!

VISIT John's Website at

www.woodsland.com/johnm

John Muehlbauer, Jan Lambert- Seaside, OR

**2 Day Carnival Glass Auction at the
Keystone Convention, Harrisburg PA**

May 4th 2007 @ 7:00PM and

May 5th 2007 @ 9:30 AM

**Ted Schilling-Baltic Ohio on Friday and
Alton Jones - Beaumont TX collection on Saturday**

Memorial Weekend May 26th 2007

Well you have heard about it and here it is.. One of the LARGEST Millersburg carnival glass collections ever offered at auction. Over 30 pieces of blue including a tulip top Multi-Fruits and Flowers punch bowl and base w/3 matching cups. Over 60 pieces of lettered items, 6 different Millersburg punch sets including a marigold Diamonds. Will post some pictures on the web soon

Ted Schilling- Baltic Ohio

Midwest Auction Facility- Greenville Ohio

June 30th, 2007 at 9:30 am

Carnival Glass Auction - over 500 pieces

Here is a long time collection from Northern Ohio that is sure to please you. Very quiet collectors that have a fine collection to offer. Updates soon!

Norman & Barb Archer, West Minster, OH

Please save this page
for future reference!

New information
to help better serve
our customers:

Mailing address and telephone numbers
for all inquiries and absentee bids:

Jim Wroda Auction Service
P.O. Box 1111
Gettysburg, OH 45328

Office phone: 937-447-4905
Cell phone (Laurie) – 937-459-9562
Evening phone – 937-447-8909



