

BURNS

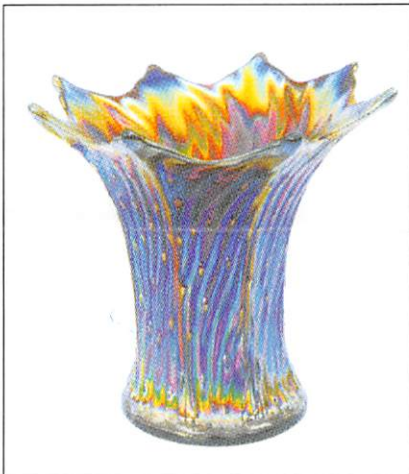
AUCTION SERVICE

Mid Atlantic Carnival Glass Jamboree Convention Auction

**Friday & Saturday,
October 25 & 26, 2002**

Friday: Preview 3:00 pm; Auction 6:30 pm,
Lots 1-200

Saturday: Preview 8:00 am; Auction 9:00 am,
Lots 201-end

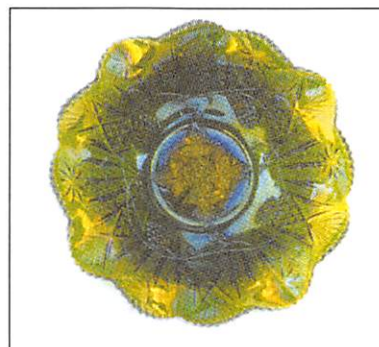


at the

Venice Inn

431 Dual Highway (US Rte. 40)
Hagerstown, MD 21740

(301) 733-0830



Sometimes I don't know how we do it! This year's Mid-Atlantic Jamboree Auction will be a Banger! This selection of glass is from the collection of Joe and Anna Benner from Pennsylvania as well as a number of other consignors making for a super selection to be sold at auction.

The Venice Inn of Hagerstown, MD will host the event. It's located on Rte. 40 (Dual Highway) as most people know and as always will provide their gracious hospitality. For reservations call the motel direct at (301) 733-0830.

Mail, phone, fax and email bids due by Wednesday, October 23, 2002.

Burns Auction Service

Tom Burns
P.O. Box 608
Bath, New York 14810
(607) 776-7942 Cell: 731-9302

Bill Richards
44 Water Street, Poland OH 44514
(330) 757-2001
FAX (330) 757-4917

Bill Richards III
2253 Country Lane
Poland, OH 44514
(330) 755-2620

Mail Bids honored under the following conditions:

1. No deposit required. Bidders will take full responsibility to honor any and all bids we execute for them. Payment in full plus postage and handling required after notification and before we ship any item to them.
2. Items are bid on in perfect condition with average or above average iridescence OR as listed in the brochures. Bids will not be carried out when damage on an item has been found during the auction. **PEOPLE PRESENT AT THE AUCTION ARE RESPONSIBLE FOR FINDING ANY PINHEADS, WEAR, SPOTTINESS, MANUFACTURER'S DEFECTS OR ANY OTHER MINOR FLAWS, ETC.**
3. Successful bidders will be notified by collect call from the auctioneer **SO BE SURE TO INCLUDE PHONE NUMBER.**
4. Phone inquiries about the glass or any other questions are welcome.
5. If you have some other person at the auction bidding for you, they must pay for the item before taking it.
6. Any terms or conditions given the day of the auction will supersede any previously published information.
7. Mail, e-mail, fax and phone bids are due by Wednesday, October 23, 2002.
8. There are no guarantees on AS IS or damaged items - 1 chip or a hundred - it's still damaged.

Visit our website at: <http://www.woodsland.com/burnsauction/>

- | | |
|---|--|
| <p>___ 1. Imperial Grape Tumbler - Pur. (great irid.)</p> <p>___ 2. N Oriental Poppy Tumbler - Dk. Mari. (super example)</p> <p>___ 3. Phoenix Lacy Dewdrop Stemmed Goblet - Mari./Milk Glass (scarce with a nice overlay)</p> <p>___ 4. Imperial Interior Ribbed Tall Lemonade Glass on Matching Underplate - Smoke (very unusual set with bright irid.)</p> <p>___ 5. 9 1/2" N ROSE SHOW FLARED PLATE - BLUE (RARE AND DESIRABLE, HALF GOLD, HALF ELEC. BLUE)</p> <p>___ 6. N Peacock at the Urn ind. Ice Cream Bowl - Elec. Blue (very scarce with bright irid.)</p> <p>___ 7. 7 3/4" Fenton Peacock at the Urn Ice Cream Shaped Bowl - Blue/Elec. Blue (very scarce with bright highlights)</p> <p>___ 8. N Three Fruits Medallion ftd. 8 Ruffled Bowl with Meander Ext. - Amy. (scarce with nice reddish irid.)</p> <p>___ 9. N G & C Covered Powder Jar - Green (very scarce with really nice irid.)</p> <p>___ 10. 12 1/2" TALL x 5 1/2" FLARE x 4 3/4" BASE N THIN RIB SWUNG MID SIZE VASE - AQUA OPAL. (VERY RARE AND VERY DESIRABLE WITH A MARI. OVERLAY)</p> <p>___ 11. 8 1/2" Fenton Captive Rose Ice Cream Shaped Bowl - Green (goldish highlights)</p> <p>___ 12. 7 1/2" Fenton G & C low 8 Ruffled Bowl - Mari./Vaseline (scarce base color with a mari. overlay)</p> <p>___ 13. 7 1/2" Imperial Embossed Scroll 8 Ruffled Bowl with File Ext. - Pur. (super irid.)</p> <p>___ 14. Riverside X-Ray Enameled Floral Celery Vase - Lt. Mari. (very scarce item with enameled Floral decor.)</p> <p>___ 15. PR. U.S. GLASS #315 DOMED SPIRALED STRETCH CANDLESTICKS - VASELINE (RARE AND DESIRABLE PAIR WITH GREAT COLOR AND SHAPE)</p> <p>___ 16. PR. 10 1/2" TALL FENTON #349 FLORENTINE STRETCH CANDLESTICKS - WISTERIA (RARE AND DESIRABLE PAIR; WELL MATCHED)</p> <p>___ 17. MAKER (?) paneled stretch car vase - WISTERIA (RARE AND DESIRABLE ITEM ESP. IN THIS COLOR)</p> <p>___ 18. Diamond 8 1/2" Tall x 5" Base Stretch Candlestick (ref. - Madeley Book Plate #65) - Wisteria (rare single stick with nice color)</p> <p>___ 19. Fenton #549 Single Candlestick - Jade Green (not carnival; still a rare single stick)</p> <p>___ 20. Fenton #549 Single Stretch Candlestick - Topaz (very scarce esp. in this color)</p> | <p>___ 21. Fenton Stretch #9 Covered Candy Jar with Linear Wheel Cut Etching - Celeste Blue (unusual item with the etching; nice)</p> <p>___ 22. FENTON STRETCH #1504A TRIPLE DOLPHIN 8 RUFFLED BOWL - VELVA ROSE (VERY SCARCE AND VERY DESIRABLE; REALLY NICE)</p> <p>___ 23. FENTON STRETCH #1533A DOUBLE DOLPHIN 2 SIDED COMPOTE - VELVA ROSE (VERY SCARE AND DESIRABLE; REALLY NICE)</p> <p>___ 24. 4 1/2" TALL x 5 3/4" DIAM. IMPERIAL STRETCH 18 RIBBED COMPOTE - RED (VERY DESIRABLE WITH GREAT COLOR AND IRID.)</p> <p>___ 25. M'BURG HOBSTAR AND FEATHER TANKARD WATER PITCHER - CRYSTAL FROSTED (A SCARCE, DESIRABLE ITEM THAT'S NICE)</p> <p>___ 26. M'burg Hobstar and Feather Stemmed Round Compote - Crystal Frosted (scarce; nice)</p> <p>___ 27. M'burg Hobstar and Feather Stemmed Round Compote - Crystal (scarce)</p> <p>___ 28. Dugan Venetian Line Pinched in Bulbous Vase - Mari. (actually quite a rare item)</p> <p>___ 29. Pastel Swan Master Salt - odd Blue Opal. (odd tint; possible Dugan?)</p> <p>___ 30. BEADED BAG WITH DRAW STRING - LARGE WITH 2 ROWS OF FLOWERS AND HANGING BEADS - DARK (REALLY ATTRACTIVE AND DESIRABLE ITEM - ONE OF THE NICER ONES I'VE SEEN)</p> <p>___ 31. Victorian Beaded Purse - Dark (scarce)</p> <p>___ 32. 1930's-40's Beaded Purse - Dark (scarce)</p> <p>___ 33. Indian Style Beaded Necklace with Bird - Various Colors (unusual; really nice)</p> <p>___ 34. Long Beaded Necklace - Dark (very long necklace; great irid.)</p> <p>___ 35. Rooster Hatpin - Amber (scarce color)</p> <p>___ 36. Rooster Hatpin - White (scarce; nice)</p> <p>___ 37. Top O' the Walk Hatpin - Dark</p> <p>___ 38. (2) Big Butterfly Hatpins - Dark</p> <p>___ 39. Belle Hatpin - Dark</p> <p>___ 40. Border Path Hatpin - Dark</p> <p>___ 41. (2) Triad Hatpins - Dark</p> <p>___ 42. Turban Hatpin - Dark</p> <p>___ 43. Oval Diamonds Hatpin - Dark</p> <p>___ 44. Uniridized Painted Rooster Hatpin - Amber (non-iridized but unusual)</p> |
|---|--|

- ___45. **8 1/4 - 8 1/2" TALL X 8 3/4 - 9" FLARE X 4 3/4" BASE DUGAN paneled tree trunk squatty flared vase - pur. (extremely rare and desirable; not many known and this has to be one of the better examples; has minor flake on one point)**
- ___46. 9 1/4" Tall Dugan Pulled Loop Swung Vase - P. Opal. (nice example)
- ___47. 6 1/4" Dugan Bellflower 6 Ruffled Crimped Edge Bowl - P. Opal. (nice opal and shape)
- ___48. 9 1/4" Dugan Cherries 6 Ruffled Bowl with Jeweled Heart Ext. - P. Opal. (light overlay)
- ___49. 9" Dugan Apple Blossom Twigs 10 low Ruffled Bowl / Plate - P. Opal.
- ___50. **5" TALL x 5 1/8" DIAM. LINED LATTICE SQUATTY FLARED VASE - PUR. (ABSOLUTELY SUPER SIZE AND IRID.; A REAL CUTIE)**
- ___51. Dugan Mary Ann Handled Vase - Mari. (scarce)
- ___52. 6" Dugan Petal and Fan Plate with Tight Crimped Edge with Jeweled Heart Ext. - P. Opal. (light color)
- ___53. 6" Dugan Petal and Fan 6 Ruffled Sauce with Jeweled Heart Ext. - P. Opal.
- ___54. 6" Dugan Pods and Posies 8 Ruffled Sauce with Plain Ext. - P. Opal. (nice example)
- ___55. **DUGAN BROOKLYN BRIDGE 10 RUFFLED BOWL - MARI. (RARE AND DESIRABLE WITH A RADIUM TYPE FINISH)**
- ___56. Dugan Pony 6 Ruffled Bowl - Mari. (scarce; has a radium finish)
- ___57. 6 1/4" Dugan Persian Garden Plate with Basketweave Ext. - Mari. (satiny example)
- ___58. Dugan Harvest Flower Tumbler - Mari. (scarce; nice color)
- ___59. Dugan Rambler Rose Tumbler - Mari.
- ___60. **DUGAN CIRCLE SCROLL 6 RUFFLED HAT - PUR. (VERY SCARCE WITH NICE EXT. IRID.)**
- ___61. Dugan Honeycomb Rose Bowl - P. Opal. (scarce with nice opal.)
- ___62. Dugan Grape Delight ftd. Ruffled Rose Bowl - White (scarce; nice irid.)
- ___63. Dugan Grape Delight ftd. Turned in Rose Bowl - Dk. Mari. (nice color and irid.)
- ___64. Dugan Grape Delight ftd. Nut Bowl - Blue (satiny)
- ___65. **DUGAN BUTTERFLY AND TULIP FTD. DEEP ROUND BOWL WITH INVERTED FAN AND FEATHER EXT. - MARI. (VERY SCARCE; NICE DARK COLOR AND IRID.)**
- ___66. Dugan Daisy and Lattice Tankard Water Pitcher - Mari.
- ___67. Dugan Fisherman Handled Mug - Pur. (nice example)
- ___68. Dugan Holly Whirl Ruffled Handled Gravy Boat - P. Opal.
- ___69. Dugan Paneled Cherries ftd. 10 Ruffled Bowl - Pur. (pretty nice color and irid.)
- ___70. Dugan Persian Garden Lg. Ice Cream Bowl - White (scarce with nice frosty color and irid.)
- ___71. Dugan Paneled Cherries ftd. 10 Ruffled Bowl - Mari.
- ___72. Dugan Leaf Ray Handled Nappy - White (nice irid.)
- ___73. Dugan Leaf Ray Handled Nappy - P. Opal. (nice opal.)
- ___74. Dugan Leaf Ray Ruffled Handled Nappy - P. Opal.
- ___75. **N PEACOCK AT THE FOUNTAIN 7 PC. WATER SET - ELEC. BLUE (ABSOLUTELY SUPER SET WITH BRIGHT BLUE HIGHLIGHTS)**
- ___76. **N PEACOCK AT THE URN LG. ICE CREAM BOWL - DK. MARI. (VERY SCARCE AND DESIRABLE; NICE COLOR)**
- ___77. **N PEACOCKS 8 RUFFLED BOWL WITH RIBBED EXT. - AQUA OPAL. (RARE AND ALWAYS DESIRABLE; REALLY NICE OPAL. AND IRID.)**
- ___78. N Peacocks 8 Ruffled Bowl with Ribbed Ext. - Dk. Mari. (very scarce with nice color and irid.)
- ___79. **N PEACOCKS BOWL WITH P.C.E. AND RIBBED EXT. - ELEC. BLUE (RARE AND VERY DESIRABLE WITH GREAT BLUE HIGHLIGHTS; NICE)**
- ___80. **N POPPY SHOW 8 RUFFLED BOWL - ELEC. BLUE (RARE AND VERY DESIRABLE WITH BLUE HIGHLIGHTS)**
- ___81. **N POPPY SHOW 8 RUFFLED BOWL - MARI. (RARE AND DESIRABLE WITH NICE DARK COLOR AND IRID.)**
- ___82. **N HEARTS AND FLOWERS 8 RUFFLED BOWL WITH RIBBED EXT. - BLUE (RARE AND DESIRABLE COLOR WITH REALLY NICE HIGHLIGHTS)**
- ___83. **N THREE FRUITS STIPPLED PLATE WITH RIBBED EXT. - BLUE (VERY SCARCE AND DESIRABLE; NICE IRID.)**
- ___84. N Strawberry 8 Ruffled Bowl with Plain Ext. - Green (scarce with nice red highlights)
- ___84A. **N STRAWBERRY BOWL WITH P.C.E. AND PLAIN EXT. - SMOKE (EXTREMELY RARE; ODD COLOR AND IRID.; VERY DESIRABLE)**
- ___85. **N G & C TANKARD 5 PC. WATER SET - PUR. (RARE AND DESIRABLE SET WITH NICE IRID.)**
- ___86. **N G & C VARIANT STIPPLED BOWL WITH P.C.E. AND RIBBED EXT. - BLUE (VERY SCARCE AND VERY DESIRABLE WITH RED AND BLUE HIGHLIGHTS)**
- ___87. N G & C Cup and Saucer - Pur. (scarce set with nice irid.)
- ___88. N Singing Bird Handled Mug - Green (really nice example with bright color and irid.)
- ___89. N Singing Bird Handled Mug - Elec. Blue (super color and irid.; nice blue highlights)
- ___90. **N SINGING BIRD STIPPLED HANDLED MUG - BLUE (VERY RARE AND VERY DESIRABLE; NICE IRID.)**
- ___91. 13 1/2" Tall x 7 1/2" Flare x 4 11/16" Base N Wide Panel Swung Funeral Vase - Dk. Mari. (rare example, perfect with great color and irid.)
- ___92. 6 3/4" Tall N Tree Trunk Squatty Swung Vase - Green (scarce size; nice)
- ___93. **7 3/4" DUGAN HOLLY WHIRL 6 RUFFLED BOWL - PUR. (SUPER EXAMPLE WITH BEAUTIFUL IRID.)**
- ___94. Pr. 8 3/4" Tall Dugan Target Swung Vases - P. Opal. (nice matched pair - selling so much each for pair)
- ___95. **9 1/4" M'BURG GRAPE LEAVES 8 RUFFLED BOWL - GREEN (EXTREMELY RARE AND VERY DESIRABLE; SUPER RADIUM FINISH)**
- ___96. **6" M'BURG STRAWBERRY WREATH 6 RUFFLED SAUCE - GREEN (RARE AND VERY DESIRABLE WITH GREAT RADIUM IRID.)**
- ___97. **6" M'BURG PEACOCK IND. ICE CREAM BOWL - AMY. (RADIUM AND NICE; HAS NO BEE AND NO BEADING)**
- ___98. Cambridge Buzz Saw Small Cruet with no Stopper - Green (very scarce with a radium type finish)
- ___99. **WESTMORELAND CRUCIFIX CANDLESTICK - MARI. (RARE AND DESIRABLE SINGLE STICK WITH NICE COLOR)**
- ___100. **4 3/8" TALL IMPERIAL MINIATURE MORNING GLORY SQUATTY VASE - PUR. (EXTREMELY RARE SIZE; A REAL CUTIE; NICE)**
- ___101. Pr. 12 1/2 - 12 3/4" Imperial Ripple Standard Swung Vases - Pur. (desirable items with great color and irid.)
- ___102. 15 3/4" Tall x 7 1/2" Flare x 5" Base Imperial Morning Glory Swung Funeral Vase - Dk. Mari. (desirable item with great color and irid.)
- ___103. 9" Imperial Cobblestone 8 Ruffled Bowl - Pur. (scarce and very desirable with super irid.)
- ___104. 7 1/2" Imperial Plain Int. / File Ext. 6 Ruffled Bowl - Pur. (super color and irid.; a scarce item)
- ___105. **IMPERIAL DIAMOND LACE 7 PC. WATER SET - PUR. (VERY DESIRABLE SET WITH TYPICAL BRIGHT MULTI-COLORED IRID.)**
- ___105A. **IMPERIAL COLONIAL LADY VASE - PUR. (RARE AND VERY DESIRABLE; SUPER COLOR AND IRID.; REALLY NICE)**
- ___106. 12" Tall Imperial Ripple Swung Vase - Pur. (really nice irid.)
- ___107. Imperial Rococo Flared Ruffled Vase - Mari. (scarce; odd flare)
- ___108. Imperial 474 7 pc. Water Set with Large Pitcher - Dk. Mari. (attractive set; well matched)
- ___109. Imperial 474 Stemmed Goblet - Mari. (nice color)
- ___110. **16 1/2" TALL x 7 3/4" WIDE x 4 3/4" BASE IMPERIAL MORNING GLORY SWUNG FUNERAL VASE - AMBER (EXTREMELY RARE ITEM WITH GREAT COLOR; HAS SOME PEELING ON EDGE)**
- ___111. **12 3/4" TALL IMPERIAL HOBSTAR AND WAFFLE BLOCK LG. HANDLED FLOWER BASKET - MARI. (VERY SCARCE ITEM WITH NICE COLOR AND IRID.)**
- ___112. Imperial Robin Handled Mug - Mari. (nice color)
- ___113. Imperial Embossed Scroll 8 Ruffled Stemmed Compote - Pur. (super irid.; really nice)
- ___114. Imperial Cobblestone 8 Ruffled Bowl with Arches Ext. - Dk. Mari. (nice dark color)

- ___ 115. 9 1/2" TALL x 5 5/8" BASE IMPERIAL ZIPPER LOOP KEROSENE LAMP - MARI. (RARE AND VERY DESIRABLE; NICE COLOR AND PERFECT)
- ___ 116. 7 3/4" TALL x 5 1/2" BASE IMPERIAL ZIPPER LOOP KEROSENE LAMP - MARI./CLEAR (RARE AND DESIRABLE; REALLY NICE COLOR AND IRID.)
- ___ 117. Imperial Grape 8 pc. Wine Set - Mari. (great color and irid.)
- ___ 117A Imperial Grape Stemmed Wine Glass - Mari.
- ___ 118. 7 3/4" Tall Imperial Miniature Morning Glory Swung Vase - Smoke (scarce color)
- ___ 119. 7 3/4" Tall Imperial Miniature Morning Glory Swung Vase - Lt. Smoke (scarce color)
- ___ 120. 10" IMPERIAL ACANTHUS FLAT CHOP PLATE - PASTEL MARI. (VERY DESIRABLE WITH GREAT IRID.)
- ___ 121. Imperial Flute and Cane Tankard Milk Pitcher - Mari. (very scarce item with nice color and irid.)
- ___ 122. Imperial Windmill Handled Milk Pitcher - Dk. Mari. (really nice color and irid.; nice)
- ___ 123. Imperial Hobstar Band Handled Water Pitcher - Mari. (scarce; pretty nice)
- ___ 124. Imperial Mellon Ribbed Rose Bowl - Mari. (nice color)
- ___ 125. Imperial Embossed Scroll Compote with Curved Star Ext. - Mari. (nice color)
- ___ 126. Imperial Interior Rays 8 Ruffled Stemmed Compote - Pastel Mari. (super irid.; nice)
- ___ 127. Imperial Star and File Stemmed Wine Glass - Mari. (scarce)
- ___ 128. Imperial Grape Handled Punch Cup - Mari.
- ___ 129. (4) Imperial Star and File Tumblers - Mari. (scarce; selling choice; nice)
- ___ 130. (6) Imperial Royalty Handled Punch Cups - Mari. (scarce; selling so much each for set)
- ___ 131. Cambridge Inverted Feather Stemmed Ruffled Compote - Mari. (nice color)
- ___ 132. CAMBRIDGE INVERTED STRAWBERRY SPITTOON - GREEN (RARE AND VERY DESIRABLE; GREAT COLOR AND PERFECT)
- ___ 132A CAMBRIDGE INVERTED STRAWBERRY POWDER JAR LID ONLY - GREEN (VERY RARE PART)
- ___ 133. M'burg Boutonniere Stemmed 6 Ruffled Compote - Amy. (radium and very desirable; great item)
- ___ 134. 9" M'burg Blackberry Wreath 6 Ruffled Bowl - Green (radium and really nice)
- ___ 135. M'BURG HOBNAIL SPITTOON - AMY. (RARE AND VERY DESIRABLE; GREAT COLOR AND IRID.)
- ___ 136. M'BURG SWIRL HOBNAIL SPITTOON - AMY. (RARE AND DESIRABLE; NICE AND PERFECT)
- ___ 137. 8 ?" M'BURG TROUT AND FLY BOWL WITH 3 IN 1 EDGE - AMY. (VERY SCARCE WITH A REALLY NICE SATINY FINISH)
- ___ 138. M'burg Nesting Swan 6 Ruffled Bowl - Amy. (very scarce with a nice satiny finish)
- ___ 139. 9" M'burg Rays and Ribbons Deep Flared Bowl - Green (satiny)
- ___ 140. 9 3/4" M'burg Rays and Ribbons Odd Ruffled Flared Bowl - Mari. (odd shape and ruffles - satiny)
- ___ 141. 9 1/2" M'BURG PEACOCK AT THE URN LG. ICE CREAM BOWL - AMY. (RARE AND VERY DESIRABLE; HAS BEE BUT NO BEADING)
- ___ 142. 9 3/4" M'BURG PEACOCK LG. ICE CREAM BOWL - GREEN (RADIUM AND RARE; GREAT IRID.; HAS NO BEE AND NO BEADING)
- ___ 142A. 9 1/2" M'BURG PEACOCK ROUND FLARED CRIMPED EDGE BOWL - MARI. (EXTREMELY RARE SHAPE FOR THIS ITEM; RADIUM AND NICE)
- ___ 143. 8 1/4" x 8 1/4" M'BURG WHIRLING LEAVES 4 SIDED SQUARE BOWL - GREEN (RADIUM AND VERY RARE IN SHAPE; A REAL BEAUTY)
- ___ 144. 7 1/2" M'BURG RAYS AND RIBBONS ROSE BOWL SHAPED DEEP ROUND BOWL - DK. MARI. (UNUSUAL SHAPE WITH A BRIGHT RADIUM FINISH)
- ___ 145. 9 1/4" IMPERIAL GRAPE FLAT PLATE - PUR. (RARE AND VERY DESIRABLE; PERFECT WITH SUPER COLOR AND IRID.)
- ___ 146. FENTON HORSEHEAD MEDALLION FTD. JACK-IN-THE-PULPIT BOWL - AMBER (VERY SCARCE BASE COLOR; AN ODDBALL)
- ___ 147. Dugan Venetian Era Tri-Cornered Pinched in Rose Bowl - Ice Blue (odd item)
- ___ 148. N GOOD LUCK 8 RUFFLED BOWL WITH RIBBED EXT. - SAPPHIRE (RARE AND VERY DESIRABLE; GREAT BASE COLOR WITH AVERAGE IRID.)
- ___ 149. N THREE FRUITS MEDALLION FTD. 8 RUFFLED BOWL WITH MEANDER EXT. - AQUA OPAL. (RARE AND VERY DESIRABLE; SUPER OPAL. AND IRID.)
- ___ 150. N GREEK KEY FLAT PLATE WITH RIBBED EXT. - DK. MARI. (EXTREMELY RARE AND VERY DESIRABLE; SUPER COLOR AND IRID.; NICE)
- ___ 151. N HEATS AND FLOWERS BOWL WITH P.C.E. AND RIBBED EXT. - LIME ICE GREEN (RARE AND EXTREMELY DESIRABLE; GREAT BASE COLOR AND IRID.)
- ___ 152. N HEARTS AND FLOWERS BOWL WITH P.C.E. AND RIBBED EXT. - ICE BLUE (ANOTHER RARE AND EXTREMELY DESIRABLE ITEM WITH NICE COLOR)
- ___ 153. N ROSE SHOW 8 RUFFLED BOWL - AQUA OPAL. (RARE AND DESIRABLE WITH A NICE PASTEL FINISH)
- ___ 154. N Hearts and Flowers 8 Ruffled Bowl with Ribbed Ext. - Ice Blue (very scarce; irid. is a bit light)
- ___ 155. N CORN VASE WITH STALK BASE - ICE BLUE (EXTREMELY RARE ITEM WITH A NICE SILVERY LUSTRE)
- ___ 156. Westmoreland Corinth Jack-in-the-Pulpit Vase - Blue Opal. (rare and desirable with great opal.)
- ___ 157. 9 1/2" Fenton Vintage Grape Lg. Ice Cream Bowl - Mari./Vaseline (rare size for this color; very attractive)
- ___ 158. M'burg Ohio Star Tankard Cider Pitcher - Crystal (scarce item; nice)
- ___ 159. FENTON STRETCH FTD. 6 RUFFLED VASE - RED (RARE AND DESIRABLE ITEM; ON OF 2 I'VE SEEN)
- ___ 160. FENTON DRAGON AND LOTUS 8 RUFFLED BOWL - RED (RARE AND VERY DESIRABLE; BRIGHT RED WITH GOLDISH HIGHLIGHTS)
- ___ 161. Fenton Dragon and Lotus 8 Ruffled Bowl - Green (attractive dark example with nice irid.)
- ___ 162. Fenton Dragon and Lotus 8 Ruffled Bowl - Mari. (satiny)
- ___ 163. 6 3/4" Fenton Lions Ice Cream Shaped Bowl - Mari. (scarce shape with nice detail and irid.)
- ___ 164. 7" Fenton Lions 6 Ruffled Bowl - Mari. (scarce; nice color and irid.)
- ___ 165. FENTON PEACOCK AT THE URN FLARED PLATE - BLUE (REALLY NICE EXAMPLE WITH BRIGHT MULTI-COLORED IRID.)
- ___ 166. FENTON PEACOCK AT THE URN FLAT PLATE - DK. MARI. (RARE AND DESIRABLE WITH NICE COLOR AND RED HIGHLIGHTS)
- ___ 167. Fenton Horsehead Medallion Jack-in-the-Pulpit ftd. Bowl - Mari. (nice example)
- ___ 168. 8" Fenton Butterfly and Berry Swung Vase - Mari. (satiny)
- ___ 169. (4) Fenton Butterfly and Berry Tumblers - Mari. (selling so much each for set; nice)
- ___ 170. FENTON BUTTERFLY AND FERN 7 PC. WATER SET - MARI. (VERY SCARCE SET WITH WELL MATCHED COLOR)
- ___ 171. FENTON KITTENS CUP AND SAUCER - MARI. (SCARCE; WELL MATCHED)
- ___ 172. (2) Fenton Kittens Handled Cups - Mari. (one darker; one lighter; selling choice)
- ___ 173. Fenton Kittens 4 sided Bowl - Mari. (scarce)
- ___ 174. Fenton Kittens Ruffled Toothpick Holder - Mari. (scarce)
- ___ 175. FENTON PANELED DANDELION 7PC. TANKARD WATER SET - AMY. (ATTRACTIVE SET; WELL MATCHED AND PERFECT)
- ___ 176. Fenton Paneled Dandelion Tumbler - Amy. (nice example)
- ___ 177. Fenton Waterlily and Cattail Saucer - Mari.
- ___ 178. Fenton Apple Tree Bulbous Handled Water Pitcher - Lt. Mari. (light color and irid.)
- ___ 179. 11 3/4" Tall Fenton Diamond Point Columns Swung Vase - Mari.
- ___ 180. FENTON RUFFLED RIB 6 RUFFLED SPITTOON - MARI. (VERY SCARCE AND DESIRABLE; NICE COLOR)
- ___ 181. Fenton Garland ftd. Rose Bowl - Mari. (nice color)
- ___ 182. Fenton Vintage Grape ftd. Fern Dish - Elec. Blue (super color and irid.; really nice)
- ___ 183. Fenton Vintage Grape ftd. Fern Dish - Dk. Mari. (nice dark color)

Mid-Atlantic Auction

Detailed Button Listing Lots #187-200

Lot #187

Lot of 12 Buttons; Selling Choice of Groups

Locomotive
Elephant
Lion (Leo)
Alligator
Moses & Miriam
Bunny Pals
Hunter & Dog
Mr. Fox
Owl in Window
Rat
Dove of Peace
Wolf

Lot #188A

Choice of 4 White Buttons

White Flowers
White Pinwheel
White Arrows
Off-White Laxey Wheel

188B

Off-White Finch
Off-White Play Boy

188C

Large Strawberry Button Red

188D

Choice of 3 Red Buttons

Red Leaf
Red Pinwheel
Red Cockatoo

188E *Selling Choice*

Large 4 Hearts
Large Spokes
Large Diamond and Beads

Remaining number of button lots will be sold as groups of 12.

Lot #189

Boar
Mountain Climber
Beetle
June Bug
Beehive
Grazing Deer
Bird Dog
Aunt Tilley's House
Blackberry
Chalet
Money Chancers
Buckle Twins

Lot #190

Laxey Wheel
Southern Night
Windmill
Plums
Big "V"
French Pops
Damson
Small Windmill
Victorian
Fern
Horseshoe
Kerchief

Lot #191

Buckle & Scrolls
Buckle
Jewel Cluster
Paisley Medallion
Choke Cherry
Wave Dots
Flowers and Leafs
Basketweave
Diamond Log
Daisy
Lighthouse
Jewel and Arcs

Lot #192

Peek-a-boo Trellis
Bachelor Buttons
Star
Waffle Block
Turpin
Triangles
Nosegay
Trellis
Tulips
Bar Five
Braid
Bird

Lot #193

Citadel
Colonial Town
Gristmill II
Belt and Buckle
Horseshoe Buckle
Chapel
Windmill
Mill and Plume
Aunt Tilley's House
The Pond
Sawmill II
The Parasol

Lot #194

Geometric
 Day Lily
 Hattie
 Star and Leafs
 Wreath and Pearls
 Daisy Star
 Coal Bin
 Beanie
 Spiral
 Hobs with Stars
 Gem Flower
 Flower Medallion

Lot #195

Fleur de Leis in Basket
 English Ivy
 Buckle
 Propeller
 Seven Hobs
 Wild Flower
 NW
 Rosette
 Leaves and Ivy
 Spiral Graph
 Seven Pedals
 Oriental Lattice

Lot #196

Dogwood
 Straw Flowers
 Wild Rose
 Three Cross
 Fuchsia
 Four Sections
 Stripped Squares
 Acorn and Leaf
 Diamonds
 Flower and Shield
 Seven Hobs
 Man in Moon

Lot #197

The Bridge
 House with Bridge
 Gristmill
 Pearl and Flowers
 Bar and Circles
 Oak and Ivy Leaves
 Four Flowers
 Grapes
 Wishbone
 Dotted
 Basket of Flowers
 Pearls

Lot #198

Farm House
 Bouquet
 Jewel and Floral Arcs
 Daisy
 Star Bright
 Beaded Flowers
 Spokes
 Vintage
 Sequins
 Viking Shield
 Maltese
 Propeller

Lot #199

Kinglets (Birds)
 Bambi
 Man in Moon
 Spider Fly and Medallion
 Girl and Dog
 Bird on Branell
 Stag and Hound
 Bird and Eggs
 Cockatoo
 Spiral
 House and Trees
 Pig
 Plus four plain buttons

Lot #200

Beetle and Shell
 Bird Dog
 Boar
 Elizabeth II
 Bird Dog
 Black Swan
 Buck and Doe
 Wren
 Oval
 Triangle
 Flowers in Circle
 Flower
 Plus 4 plain buttons

- ___ 184. 7 1/4" Fenton Vintage Grape Flat Plate - Mari. (scarce item with a satiny finish)
- ___ 185. **FENTON BLACKBERRY SPRAY CRIMPED EDGE JACK-IN-THE-PULPIT HAT - RED (RARE AND DESIRABLE WITH NICE DARK COLOR)**
- ___ 186. **FENTON TWO ROW OPEN EDGE JACK-IN-THE-PULPIT HAT - RED (VERY DESIRABLE AND VERY ATTRACTIVE)**
- ___ 186A **6 3/4" TALL FENTON BLACKBERRY TWO ROW OPEN EDGE SWUNG VASE - DK. MARI. (RARE AND DESIRABLE; A DARK AND PERFECT EXAMPLE; NICE)**
- ___ 187. Lot of (12) Buttons on a Card - See Insert Sheet for Next 14 Lots- Dark (selling choice)
- ___ 188. Lot of (12) Buttons on a Card - Assort. Colors (selling in separate lettered lot groupings)
- ___ 189. Lot of (12) Buttons on a Card - Dark (selling as one lot)
- ___ 190. Lot of (12) Buttons on a Card - Dark (selling as one lot)
- ___ 191. Lot of (12) Buttons on a Card - Dark (selling as one lot)
- ___ 192. Lot of (12) Buttons on a Card - Dark (selling as one lot)
- ___ 193. Lot of (12) Buttons on a Card - Dark (selling as one lot)
- ___ 194. Lot of (12) Buttons on a Card - Dark (selling as one lot)
- ___ 195. Lot of (12) Buttons on a Card - Dark (selling as one lot)
- ___ 196. Lot of (12) Buttons on a Card - Dark (selling as one lot)
- ___ 197. Lot of (12) Buttons on a Card - Dark (selling as one lot)
- ___ 198. Lot of (12) Buttons on a Card - Dark (selling as one lot)
- ___ 199. Lot of (12) Buttons on a Card - Dark (selling as one lot)
- ___ 200. Lot of (12) Buttons on a Card - Dark (selling as one lot)

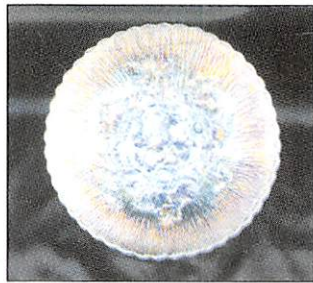
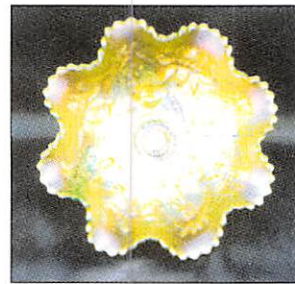
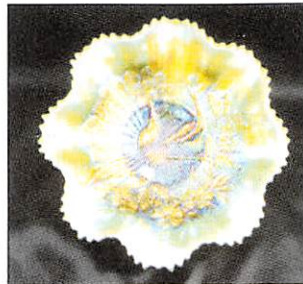
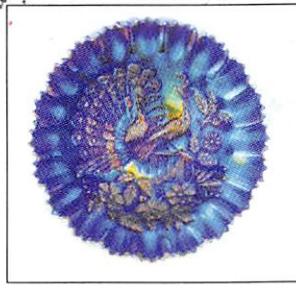
START OF SECOND SESSION

- ___ 201. 10" Fenton Vintage Grape Bowl with 3 in 1 Edge - Blue (attractive)
- ___ 202. 9 1/2" Fenton Feathered Serpent Lg. Bowl with 3 in 1 Edge - Mari. (nice satiny example)
- ___ 203. 9 3/4" Fenton Little Flowers Lg. Bowl with 3 in 1 Edge - Green (satiny)
- ___ 204. Fenton Little Flowers 6pc. Round Berry Set - Mari. (actually quite a scarce set)
- ___ 205. **17 3/4" TALL x 7 1/2" FLARE x 5 1/6" BASE FENTON RUSTIC SWUNG FUNERAL VASE WITH PLUNGER BASE - BLUE/ELEC. BLUE (SUPER ITEM WITH GREAT IRID.; REALLY NICE)**
- ___ 206. 9" Fenton Butterfly and Berry Swung Vase - Blue (satiny)
- ___ 207. Fenton Kittens Ruffled Toothpick Holder - Mari. (scarce)
- ___ 208. 7 1/2" Fenton Horsehead Medallion Flat Plate - Dk. Mari. (very scarce; nice)
- ___ 209. **6 1/2" FENTON LITTLE FLOWERS FLAT PLATE - MARI. (VERY SCARCE WITH NICE COLOR AND IRID.)**
- ___ 210. **FENTON HOLLY GOBLET SHAPED STEMMED COMPOTE - RED (RARE AND DESIRABLE; DARK AND VERY NICE)**
- ___ 211. **9 1/2" FENTON HOLLY FLAT PLATE - BLUE (VERY SCARCE AND DESIRABLE WITH BRIGHT MULTI-COLORED IRID.)**
- ___ 212. 8" Fenton Holly Deep Round Bowl - Blue (scarce)
- ___ 213. Fenton Holly Stemmed 6 Ruffled Compote - Lt. Amber (odd base color; satiny)
- ___ 214. **9 1/2" FENTON ORANGE TREE WITH TRUNK FLAT PLATE - BLUE (VERY SCARCE AND DESIRABLE; SATINY)**
- ___ 215. **9 1/4" FENTON PERSIAN MEDALLION LG. ICE CREAM SHAPED BOWL - BLUE/ELEC. BLUE (QUITE AN ITEM WITH BRIGHT BLUE HIGHLIGHTS)**
- ___ 216. **9" FENTON PEACOCK AT THE URN 6 RUFFLED BOWL - ELEC. BLUE (SUPER, SUPER EXAMPLE; GREAT IRID.)**
- ___ 217. Fenton Butterfly and Berry Lg. 8 Ruffled ftd. Master Berry Bowl - Amy. (very scarce; sorta satiny)
- ___ 218. **FENTON LATTICE AND GRAPE TANKARD WATER PITCHER - WHITE (RARE AND DESIRABLE; HAS CHECK IN HANDLE)**
- ___ 219. **FENTON BANDED BLACKBERRY 6 RUFFLED HAT - WHITE (RARE AND VERY DESIRABLE WITH GREAT IRID.)**
- ___ 220. **FENTON ZIG ZAG ENAMELED COLUMBINE 7PC. WATER SET - AMY. (RARE AND DESIRABLE SET; SATINY FINISH)**
- ___ 221. Fenton Blueberry 6pc. Bulbous Water Set - Mari. (very scarce and desirable set; nice)
- ___ 222. **9 3/4" FENTON TWO FLOWERS BALL FTD. 8 RUFFLED BOWL - MARI. / VASELINE (VERY SCARCE AND DESIRABLE BASE COLOR)**

- ___ 223. **7" FENTON ACORN ICE CREAM SHAPED BOWL - RED (RARE AND DESIRABLE; DARK SATINY OVERLAY)**
- ___ 224. **FENTON 2 ROW OPEN EDGE 6 RUFFLED HAT - RED (RARE AND DESIRABLE; SATINY FINISH)**
- ___ 225. **FENTON WATERLILY AND CATTAIL 7PC. WATER SET - MARI. (VERY RARE AND DESIRABLE; NICE RADIUM TYPE FINISH)**
- ___ 226. Fenton Ten Mums 7 pc. Tankard Water Set - Mari. (rare and desirable set; tough set)
- ___ 227. **N ACORN BURR 10 PC. RUFFLED PUNCH SET - PUR. (VERY RARE AND VERY DESIRABLE; REALLY NICE)**
- ___ 228. 10 1/4" N Thin Rib Standard Swung Vase - Russet Green (scarce)
- ___ 229. 10 1/4" N Thin Rib Standard Swung Vase - Mari. (nice color)
- ___ 230. **N G & C FTD. FERNERY - PUR. (VERY RARE AND DESIRABLE; NICE COLOR)**
- ___ 231. N G & C Cologne Bottle Stopper only - Pur. (really tough part if ya need it)
- ___ 232. **N G & C FTD. HATPIN HOLDER - DK. MARI. (VERY SCARCE; REALLY NICE)**
- ___ 233. N G & C ftd. Hatpin Holder - Pur. (all three of the following are nice but different)
- ___ 234. N G & C ftd. Hatpin Holder - Pur.
- ___ 235. N G & C ftd. Hatpin Holder - Pur.
- ___ 236. 8" N G & C 2 Sided Plate with Basketweave Ext. - Green (scarce item; satiny)
- ___ 237. N G & C 2 Handled Bon Bon with Basketweave Ext. - Dk. Mari. (really nice irid.)
- ___ 238. N G & C Tumbler - Elec. Pur. (super irid. with blue high-lights)
- ___ 239. (6) N G & C Tumblers - Amy. (selling so much each for set)
- ___ 240. N G & C 7 pc. Water Set - Dk. Mari. (very nice example; nice dark color and irid.)
- ___ 241. **N G & C COVERED COMPOTE - PUR. (RARE AND DESIRABLE WITH NICE COLOR AND IRID.)**
- ___ 242. N G & C Covered Sweetmeat Compote - Pur. (very scarce; has a well matched satiny finish)
- ___ 243. **N G & C VARIANT 8 RUFFLED BOWL WITH PLAIN EXT. - PUR. (VERY ATTRACTIVE ITEM WITH GREAT IRID.)**
- ___ 244. N G & C Bowl with P.C.E. and Basketweave Ext. - Mari. (satiny)
- ___ 245. 9" N G & C Plate with Basketweave Ext. - Pur. (scarce with a nice satiny finish)
- ___ 246. N Star of David and Bows domed 8 Ruffled Bowl - Mari. (satiny finish)
- ___ 247. **N GOOD LUCK 8 RUFFLED BOWL WITH BASKETWEAVE EXT. - PUR. (NICE EXAMPLE WITH BRIGHT HIGHLIGHTS)**
- ___ 248. N Good Luck Bowl with P.C.E. and Ribbed Ext. - Mari. (attractive item with nice irid.)
- ___ 249. N Good Luck 8 Ruffled Bowl with Ribbed Ext. - Mari. (another attractive item with nice irid.)
- ___ 250. **N PEACOCKS FLARED PLATE WITH PLAIN EXT. - ICE BLUE (RARE AND DESIRABLE; NICE BASE COLOR WITH BRIGHT IRID.)**
- ___ 251. **N PEACOCKS PLATE WITH RIBBED EXT. - PUR. (RARE AND VERY DESIRABLE; REALLY NICE)**
- ___ 252. **N PEACOCKS PLATE WITH RIBBED EXT. - PASTEL MARI. (VERY SCARCE WITH NICE PASTEL IRID.)**
- ___ 253. **N PEACOCKS PLATE WITH RIBBED EXT. - MARI. (VERY SCARCE WITH NICE IRID.)**
- ___ 254. **N PEACOCKS BOWL WITH P.C.E. WITH RIBBED EXT. - ICE BLUE (RARE AND VERY DESIRABLE; NICE COLOR AND IRID.)**
- ___ 255. **N TORNADO STANDARD TRI CORNERED VASE - PUR. (RARE AND DESIRABLE WITH GREAT DARK COLOR AND IRID.)**
- ___ 256. **8 1/4" TALL N DRAPERY VARIANT SWUNG VASE - BLUE (VERY SCARCE AND DESIRABLE; NICE COLOR)**
- ___ 257. 9 3/4" Tall N Diamond Point Swung Vase - Green (nice irid.)
- ___ 258. 9 1/4" Tall N Tree Trunk Standard Swung Vase - Green (nice irid.)
- ___ 259. N Fine Cut and Roses ftd. Ruffled Rose Bowl - Mari. (nice satiny finish)
- ___ 260. **N ORIENTAL POPPY 7 PC. TANKARD WATER SET - GREEN (RARE AND DESIRABLE SET; ATTRACTIVE; SMALL OPEN BLISTER AT BASE OF PITCHER)**

261. **N ROUND BUSHEL BASKET - GREEN (RARE AND VERY DESIRABLE; REALLY NICE COLOR AND IRID.)**
262. **N ROUND BUSHEL BASKET - AQUA OPAL. (RARE AND DESIRABLE; HAS NICE OPAL. AND OVERLAY)**
263. N Round Bushel Basket - Fiery Amy. (scarce; nice base color)
264. N Round Bushel Basket - Amy. (scarce with nice irid.)
265. N Round Bushel Basket - Blue (very scarce with nice color and irid.)
266. N Round Bushel Basket - Dk. Mari. (very scarce with really nice dark color)
267. N Eight Sided Bushel Basket - Dk. Mari. (another really ice dark example)
268. N Eight Sided Bushel Basket - White (scarce; frosty finish)
269. **N POPPY OVAL RUFFLED RELISH TRAY WITH RIBBED EXT. - BLUE (VERY SCARCE AND DESIRABLE; NICE BRIGHT IRID.)**
270. **N DANDELION HANDLED MUG - GREEN (RARE AND DESIRABLE; REALLY TOUGH BASE COLOR; NICE)**
271. **N DANDELION HANDLED MUG - AQUA OPAL. (RARE AND DESIRABLE; GREAT COLOR AND IRID.)**
272. **N DANDELION HANDLED MUG - MARI. (ANOTHER RARE ITEM WITH REALLY NICE COLOR)**
273. N Singing Bird Handled Mug - Green (very scarce and desirable; nice)
274. N Singing Bird Handled Mug - Pur. (really nice item)
275. N Singing Bird Handled Mug - Mari. (scarce)
276. (6) N Raspberry Tumblers - Mari. (selling so much each for set)
277. N Dandelion Tumbler - Mari. (nice color)
278. N Daisy and Plume / Fern Int. Stemmed Ruffled Compote - Green (scarce with nice color and irid.)
279. N Daisy and Plume / Fern Int. Stemmed Ruffled Compote - Mari. (another scarce item with nice color)
280. **N HEARTS AND FLOWERS STEMMED RUFFLED COMPOTE WITH RIBBED EXT. - AQUA OPAL. (RARE AND DESIRABLE WITH NICE COLOR AND OPAL.)**
281. N Hearts and Flowers Stemmed Ruffled Compote with Ribbed Ext. - White (very scarce with nice color)
282. N Fruits and Flowers Stemmed Bon Bon with Basketweave Ext. - Pur. (super example with bright irid.)
283. **N HARVEST POPPY STEMMED 6 RUFFLED COMPOTE - MARI. (VERY RARE AND DESIRABLE WITH GREAT IRID.; NICE)**
284. N Paneled Holly 2 Handled 2 sided Bon Bon - Mari. (sorta radium finish)
285. **N EMBROIDERED MUMS 8 RUFFLED BOWL WITH PLAIN EXT. - ICE BLUE (RARE AND DESIRABLE WITH NICE COLOR AND AVERAGE IRID.)**
286. N Wishbone ftd. 8 Ruffled Bowl with Ruffles and Rings Ext. - Green (nice color)
287. N Wishbone ftd. 8 Ruffled Bowl with Ruffles and Rings Ext. - Mari. (nice color and irid.)
288. N Rose Show 8 Ruffled Bowl - White (very scarce and desirable; average)
289. N Rose Show 8 Ruffled Bowl - Blue Opal. (not carnival; really nice opal. and color)
290. **N PEACOCK AT THE URN LARGE ICE CREAM BOWL - BLUE (RARE AND DESIRABLE WITH REALLY NICE IRID.)**
291. N Peacock at the Urn Ind. Ice Cream Bowl - Blue (nice example)
292. **N PEACOCK AT THE URN LARGE ICE CREAM BOWL - PASTEL MARI. (VERY SCARCE WITH REALLY NICE IRID.)**
293. (2) N Peacock at the Urn Ind. Ice Cream Bowls - Mari. (well matched; selling choice)
294. **N THREE FRUITS STIPPLED PLATE WITH RIBBED EXT. - DK. MARI. (VERY SCARCE WITH REALLY NICE COLOR AND IRID.)**
295. N Three Fruits Stippled 8 Ruffled Bowl with Ribbed Ext. - Pastel Mari. (very scarce with super irid.)
296. N Drapery Swung Vase - Blue Opal. (not carnival; but scarce)
297. N Rainbow Stemmed 6 Ruffled Compote with Basketweave Ext. - Mari.
298. 10" Tall N Fine Rib Standard Swung Vase - Pur. (nice dark color)
299. Pair N'wood Pillar and Drape Lamp Shades - Mari./Custard (really nice pair; selling so much each)
300. **N MEMPHIS 8 PC. RUFFLED PUNCH SET - WHITE (VERY RARE AND VERY DESIRABLE; FROSTY AND SUPER WITH GREAT IRID. AND PERFECT)**
301. **N PEACOCK AT THE FOUNTAIN HANDLED PUNCH CUP - ICE GREEN (A VERY RARE ITEM IF ANYONE NEEDS IT - NICE)**
302. **N PEACOCKS FLAT PLATE WITH RIBBED EXT. - ELEC. BLUE (SUPER EXAMPLE WITH BRIGHT BLUE IRID.; REALLY NICE)**
303. **N PEACOCKS 8 RUFFLED BOWL WITH RIBBED EXT. - ELEC. BLUE (ANOTHER REALLY NICE EXAMPLE WITH BLUE HIGHLIGHTS)**
304. **N PEACOCKS 8 RUFFLED BOWL WITH RIBBED EXT. - LT. ICE BLUE (VERY SCARCE WITH PRETTY NICE COLOR)**
305. **N PEACOCKS 8 RUFFLED BOWL WITH RIBBED EXT. - AQUA OPAL. (RARE AND DESIRABLE WITH NICE OPAL. AND OVERLAY)**
306. N G & C 10 pc. Master Punch Set - Pur. (a real beaut but is damaged on base - Lt. Amy. Cups to be sold separately)
307. 9" N G & C Flat Plate with Basketweave Ext. - Amy. (really nice example)
308. 8 3/4" N G & C 8 Ruffled Bowl with Plain Ext. - Amy. (really nice color and irid.)
309. 8 1/4 - 1/2" N G & C Bowl with P.C.E. and plain Ext. - Green (nice example with really nice color and irid.)
310. **N POPPY SHOW FLARED PLATE - ICE BLUE (RARE AND VERY DESIRABLE; SUPER BASE COLOR AND IRID.)**
311. **N POPPY SHOW FLAT PLATE - DK. MARI. (RARE AND DESIRABLE; REALLY NICE DARK COLOR AND IRID.)**
312. **N ROSE SHOW 8 RUFFLED BOWL - AQUA OPAL. (RARE AND DESIRABLE; NICE OPAL AND IRID.)**
313. **N ROSE SHOW 8 RUFFLED BOWL - GREEN (SUPER EXAMPLE WITH BRIGHT IRID.; HAS NO HARM TINY CHIP ON ONE ROSE)**
314. N Good Luck 8 Ruffled Bowl with Basketweave Ext. - Pur. (really nice example; scarce)
315. **N WISHBONE DEEP 8 RUFFLED FTD. BOWL WITH RUFFLES AND RINGS EXT. - LIME ICE GREEN (VERY RARE AND VERY DESIRABLE; GREAT BASE COLOR AND IRID.)**
316. N Wishbone ftd. 8 Ruffled Bowl with Ruffles and Rings Ext. - Dk. Mari. (really nice example)
317. 9 1/2" N Wishbone Bowl with P.C.E. and Basketweave Ext. - Mari. (nice satiny example)
318. N Three Fruits Medallion ftd. 8 Ruffled Bowl with Meander Ext. - Pur. (scarce with really nice irid.)
319. **N THREE FRUITS STIPPLED FLAT PLATE WITH RIBBED EXT. - ELEC. BLUE (RARE AND DESIRABLE WITH NICE IRID.)**
320. **11 1/4" DUGAN GARDEN PATH VARIANT CHOP PLATE WITH SODA GOLD EXT. - PUR. (VERY RARE AND DESIRABLE; BRIGHT SATINY FINISH - HAS CHIP ON TIP OF ONE POINT)**
321. 9 1/2" Dugan Round Up low 10 Ruffled Bowl / Plate - Blue (scarce base color with a satiny irid.)
322. Dugan Stork in the Rushes with Lattice Band Tumbler - Blue (nice example)
323. Dugan Pastel Swan Master Salt - Pur. (very scarce; pretty nice example)
324. Dugan Pastel Swan Master Salt - Pink (nice color)
325. **M'BURG SWIRL HOBNAIL SPITTOON - DK. MARI. (RARE AND DESIRABLE; NICE COLOR AND IRID.; TOUGH)**
326. 11" Tall M'burg Swirl Hobnail Swung Vase - Dk. Mari. (very scarce with nice color and irid.; has manuf. Roughness on top edge)
327. M'burg Holly Sprig Handled 2 sided Card Tray - Green (satiny finish; nice)
328. 10" M'burg Seaweed Lg. Bowl with 3 in 1 Edge - Green (very scarce with a satiny finish; small chip on base)
329. **10 1/4" M'BURG FLEUR DE LEI BOWL WITH 3 IN 1 EDGE - AMY. (VERY DESIRABLE WITH A NICE RADIUM FINISH)**
330. **8 1/2" M'BURG TROUT AND FLY ICE CREAM SHAPED BOWL - GREEN (VERY SCARCE AND VERY DESIRABLE WITH A SUPER SATINY FINISH)**
331. Imperial Diamond Lace Handled Water Pitcher - Pur. (super irid.; bright and multi-colored irid.)
332. Imperial Pansy Handled Creamer - Green (nice example)
333. 9 1/2" Fenton Lotus and Poinsettia Lg. 8 Ruffled ftd. Bowl - Dk. Mari. (nice color)

334. 5 1/2" Fenton Little Flowers 6 Ruffled Sauce - Mari.
 335. 5 1/2" Fenton Lotus and Poinsettia ftd. 6 Ruffled Sauce - Green (very scarce color with really nice irid.)
 336. Fenton Iris Flared 6 Ruffled Stemmed Compote - Green (satiny finish)
 337. Fenton Vintage Grape 6 Ruffled Stemmed Compote - Green (really nice example)
 338. Fenton Vintage Grape 6 Ruffled Stemmed Compote - Dk. Mari. (really nice example)
 339. 8 3/4" Fenton Peacock at the Urn 8 Ruffled Bowl - Mari. (scarce with nice color and irid.)
 340. 9 1/2" Fenton Cherry Circles 8 Ruffled Bowl - Blue (nice satiny finish)
 341. 8" Fenton Captive Rose Ice Cream Shaped Bowl - Blue (nice color)
 342. 7 1/2" Fenton Ribbon Tie Round Bowl with Candy Ribbon Edge - Blue (nice satiny finish)
 343. 8" Fenton Vintage Grape Round Bowl with Candy Ribbon Edge - Amy. (nice irid.)
 344. **FENTON BLACKBERRY SPRAY 6 RUFFLED HAT - RED (VERY SCARCE AND DESIRABLE; REALLY NICE)**
 345. 5 3/4" Fenton Lotus and Poinsettia ftd. 6 Ruffled Sauce - Mari./Vaseline (nice example; really nice base color)
 346. 5 1/2" Fenton Little Fishes ftd. 6 Ruffled Sauce - Blue (scarce; attractive example)
 347. **FENTON THISTLE FTD. OVAL BANANA BOAT - DK. MARI. (REALLY NICE COLOR; VERY ATTRACTIVE)**
 348. 10 1/2" Tall Fenton Fine Rib Standard Swung Vase - Mari./Vaseline (attractive and desirable; nice base color)
 349. 9 1/2" Tall Fenton Fine Rib Standard Swung Vase - Aqua / Green (odd base color; very attractive)
 350. 9 3/4" Tall April Showers Swung Vase - Green (nice color)
 351. 11 1/4" Tall Fenton Plume Panels Swung Vase - Mari. (nice color)
 352. **FENTON ORANGE TREE HANDLED LOVING CUP - BLUE (VERY SCARCE AND VERY DESIRABLE; REALLY NICE IRID.)**
 353. Fenton Orange Tree Handled Loving Cup - Dk. Mari. (really nice example but has check in handle)
 354. Fenton Orange Tree ftd. Hatpin Holder - Mari. (scarce; nice color and irid.)
 355. Fenton Orange Tree 8 Ruffled Bowl - Blue (satiny example)
 356. Fenton Orange Tree Standard Flared Mug - Mari.
 357. 8" Fenton Peacock at the Urn Ice Cream Shaped Bowl - Mari. (really nice color)
 358. N Dandelion Handled Mug - Pur. (very scarce with nice irid.)
 359. N Wishbone ftd. Ruffled Bowl with Ruffles and Rings Ext. - Pur. (nice color and irid.)
 360. **9 1/2" N WISHBONE BOWL WITH P.C.E. AND BASKETWEAVE EXT. - SMOKE (RARE AND VERY DESIRABLE BASE COLOR)**
 361. N Peach Lg. Round Master Berry Bowl - White (very scarce with nice irid.)
 362. N Strawberry Bowl with P.C.E. and Basketweave Ext. - Pur. (scarce with nice color)
 363. N Strawberry 8 Ruffled Bowl - Green (nice example)
 364. N Three Fruits Medallion ftd. Ruffled Bowl with Meander Ext. - Amy. (scarce with nice irid.)
 365. **N ROSE SHOW 8 RUFFLED BOWL - AQUA OPAL. (RARE AND DESIRABLE WITH NICE COLOR AND OPAL.)**
 366. **N EMBROIDERED MUMS 8 RUFFLED BOWL - ICE BLUE (RARE AND DESIRABLE; NICE COLOR; NOT SURE OF EXTERIOR)**
 367. N Grape Arbor Tankard Water Pitcher - Mari. (scarce with nice color and irid.)
 368. N Good Luck Bowl with P.C.E. and Ribbed Ext. - Mari. (scarce with really nice color and irid.)
 369. N G & C 8 Ruffled Bowl - Green (nice color and irid.)
 370. **N PEACOCK AT THE URN LG. ICE CREAM BOWL - ICE BLUE (RARE AND DESIRABLE WITH NICE COLOR AND IRID.)**
 371. 5 3/4" Fenton Pine Cone Bowl - Blue (nice color)
 372. **9" FENTON HEART AND VINE FLAT PLATE - BLUE (RARE AND DESIRABLE; REALLY NICE COLOR AND IRID.)**
 373. **9" FENTON CAPTIVE ROSE FLARED PLATE - BLUE (VERY SCARCE AND DESIRABLE; NICE COLOR)**
 374. **9 1/2" FENTON HOLLY FLAT PLATE - BLUE (VERY SCARCE AND VERY DESIRABLE WITH NICE IRID.)**
 375. **FENTON STRAWBERRY 2 HANDLED BON BON - LIME GREEN OPAL. (VERY RARE AND VERY DESIRABLE; GREAT OPAL. WITH A MARI. OVERLAY)**
 376. Fenton Dragon and Lotus Ice Cream Shaped Bowl - Blue (nice satiny irid.)
 377. Fenton Peacock and Grape 8 Ruffled Bowl - Amy. (scarce color)
 377A. **9 1/2" FENTON PEACOCK AND GRAPE FLARED PLATE - AMY. (EXTREMELY RARE COLOR FOR THIS ITEM; AVERAGE IRID.)**
 378. **7 1/2" TALL M'BURG TULIP AND SCROLL SQUATTY FLARED VASE - AMY. (SCARCE COLOR)**
 379. **M'BURG TROUT AND FLY ICE CREAM SHAPED BOWL - GREEN (RARE AND DESIRABLE WITH A NICE SATINY FINISH)**
 380. 8 1/2 - 9" Imperial Grape Ruffled Bowl - Pur. (super irid.)
 381. 10 1/2" Tall Imperial Ripple Swung Vase - Pur. (super irid.)
 382. 7 3/4" Tall Imperial Miniature Morning Glory Swung Vase - Smoke (scarce with nice irid.)
 383. **WESTMORELAND WILD ROSE HANDLED SYRUP JUG - MARI. (RARE AND VERY DESIRABLE; HAS A TINY CHECK IN NECK NEAR LID)**
 384. Westmoreland Strutting Peacock Covered Sugar and Creamer - Amy. (scarce set; well matched)
 385. Westmoreland Strutting Peacock Covered Sugar and Creamer - Green (scarce color; one lid is damaged)
 386. Westmoreland Shell and Jewel Covered Sugar and Creamer - Mari. (nice pair)
 387. Westmoreland Shell Novelty Candy Dish - Teal (scarce color)
 388. 9" Tall Westmoreland Corinth Swung Vase - Teal (scarce)
 389. 9 1/2" Tall Westmoreland Corinth Swung Vase - Lt. Amber (scarce)
 390. **9" WESTMORELAND SMOOTH RAYS RUFFLED BOWL - BLUE OPAL. (SCARCE AND DESIRABLE; BASE HAS THICK OPALESCENCE)**
 391. (2) Pastel Swan Master Salts - Celeste Blue (selling choice)
 392. (2) Pastel Swan Master Salts - Ice Green (selling choice)
 393. Sowerby Covered Swan Butter Dish - Blue (very scarce and desirable; neck is filled in)
 394. Sowerby Covered Hen Butter Dish - Mari. (scarce with nice color)
 395. **IMPERIAL BROCADED POPPY LG. BULBOUS FTD. VASE - PINK (LARGE AND DESIRABLE ITEM; VERY NICE)**
 396. "Be Wise" Owl Bank - Mari. (scarce novelty)
 397. Westmoreland Barber Bottle with Enam. Floral Decoration - Smoke Flash (scarce item)
 398. Westmoreland Barber Bottle - Lt. Mari.
 399. Pastel Jack-in-the-Pulpit Hat - Pink / Gray
 400. European Cathedral Chalice - Dk. Mari. (scarce with nice dark color and irid.)
 401. European African Shield Vase - Mari. (scarce item)
 402. Maker (?) Top Hat Vase with Merchant's Label - Cranb. Flash (unusual item - shown in Edwards' New Book)
 403. Maker (?) Aramus 7 pc. Tankard Set - Mari. (unusual set; well matched)
 404. U.S. Glass Peacock Table Lamp - White Camphor (not carnival; a bit different)
 405. Newer Fenton Chessie Cat Covered Compote - Pur. (very scarce and desirable; newer item)
 406. 1969 Fenton Preznick G & C Covered Humidor - Pur. (another scarce and collectible Fenton Item)
 407. 1990 Fenton Diamond Rib Swung Vase - Red (actually a rare reissue of 19 made; super)
 408. Crider Hobstar Childs Tumbler or Toothpick Holder - Mari. (a cute item; nice)
 409. 5 1/4" St. Clair Paneled Grape Plate - Mari.
 410. SURPRISE!!!



Burns Auction Service

P.O. Box 608
Bath, New York 14810

First Class
US Postage
PAID
Permit No. 7
Hammondsport, NY

*2002 Mid Atlantic Carnival Glass
Jamboree Convention Auction!*

JAKE DIANE PALYON
4030 HILL VALLEY
14810 HAMMONDSPORT, NY



91378441501 17

