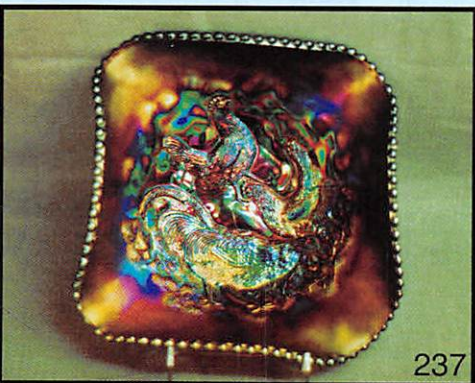


*Jim Wroda Auction Services
PO Box 1111
Gettysburg, Ohio 45328*



First Class

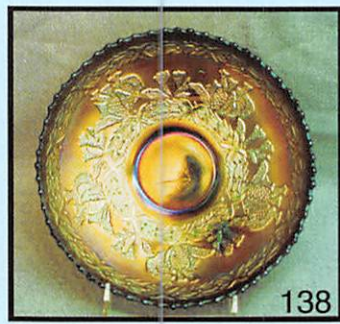
The Charles King Collection



115



137



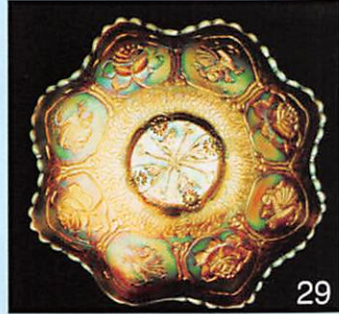
138



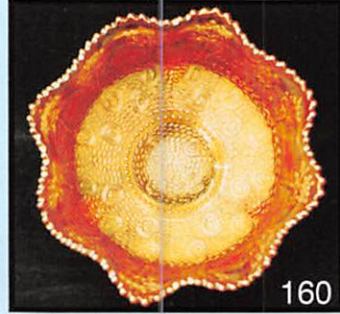
114



31



29



160



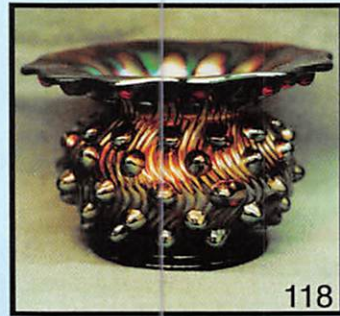
33



204



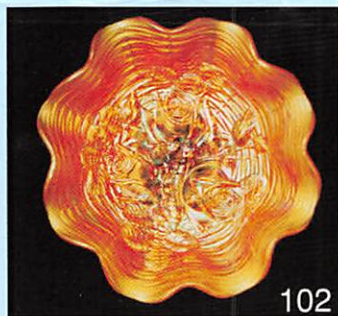
122



118



203



102



116



117



224



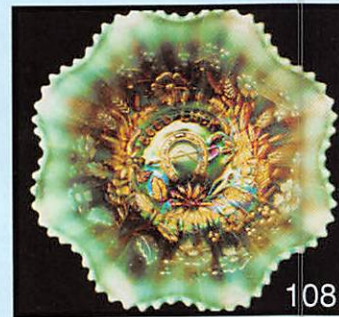
227



241



21



108



184



217



90



183

Jim Wroda Auction Services

PO Box 1111 Gettysburg Ohio 45328

937-447-8909 or Email: Horatio@wesnet.com

Carnival Glass Auction Charles King Collection Saturday, April 7th, 2001 10:00 am *Preview Fri., 7 – 9 p.m. and Sat., 8 a.m.* Four Points Sheraton 2124 South Hamilton Rd. Columbus Ohio 43232 614-861-7220

*Call hotel for reservations and mention Jim Wroda Auction Services to receive special rate.
Any problems ask for Sandy Muncie or give me a call and I'll take care of it.*

Directions: From I-70 east or west take exit 107, Hamilton Rd., Go south ¼ mile to Groves rd and turn left, then an immediate left on services rd. Hotel is right there by Bennigans restaurant.

On Saturday, April 7th, we will be selling the personal collection of Mr. Charles King of south central PA. This collection was started back in the early 60's and has been dormant since 1978. Charles and his mother quietly collected all this time and found some wonderful items! None of this collection has seen the light of day for the past 20+ years. Come on over to Columbus and see some nice hidden treasures.

IMPORTANT

Mail, E-mail, and Absentee Bids Policy:

1. Phone inquiries on items of interest are welcome! 937-447-8909. Or visit the website at www.jimwrodauction.com
2. Bidders take full responsibility to honor any and all bids that are executed in your behalf.
3. All items to be paid for within 7 days of notification. Successful absentee bidders must also pay estimated shipping costs.
4. All items bid competitively against the audience. **We do not start with your bid.**
5. Items will be bid on in **perfect condition** with average to above average iridescence unless otherwise stated or noted on your order of sale list or absentee bid sheet. **We will describe each item as accurately as possible!! (see listing) Bids will not be carried out if a damage is found during auction.** If manufacture problems bother you such as air bubbles, pulled points, soda ash, tool marks, or any other manufacturing flaws, please be specific in your mail bids or email bids. *If there is a manufacture flaw on an item that we feel is truly distracting,* we have noted that in the catalog listing already.
6. All bids can be called in to: (937) 447-8909 or sent to P.O. Box 1111, Gettysburg, Ohio 45328. You can also e-mail bids and questions (Please Ask!) to: HORATIO@wesnet.com. ***** All bids due by April 6th, 9:00 a.m.*****
7. If someone in the audience is bidding for you they must pay for the item(s) before leaving.
8. If paying by CC your item(s) will be shipped within 5 days.

Visit us on the web at: www.jimwrodauction.com

Terms and Conditions of Auction: Cash, Travelers checks, business or personal checks with proper I.D. We now have Visa and MC with a 3% charge. All items being sold with **NO MINIMUM and NO RESERVE!** *Everything sells to highest bidder.* Announcements made day of sale take precedence over printed information.

Jim Wroda Auction Services

Jim Wroda and Mike Baker Auctioneers

937-447-8909 or 937-548-2640

E-mail: HORATIO@wesnet.com



*Licensed and Bonded in favor of the State of Ohio
Member of the Ohio Auctioneers Association and National Auctioneers Association*



- ___ 1. Westmoreland creamer
- ___ 2. Westmoreland mari. Hobstar & Fruit 2-sided small banana dish. Very cute!
- ___ 3. Westmoreland teal Corinth 9" vase.
- ___ 4. Imp. mari. Waffle Block punch set w/4 cups.
- ___ 5. Imp. purple Diamond & Sunburst flared wine cordial
- ___ 6. Imp. mari. Diamond & Sunburst stemmed wines w/flared top. (5) Choice.
- ___ 7. Imp. mari. Flute tumbler
- ___ 8. Imp. mari. Frosted Block 7 1/2" flat plate.
- ___ 9. Imp. mari. Heavy Grape punch bowl top.
- ___ 10. Imp. smokey lt.amy Heavy Grape 6" flared berry bowl. Really odd color. Nice irid.
- ___ 11. **Imp. purple/elec. purple Grape water pitcher. Very nice multi-color irid with elec. hi-lites.**
- ___ 12. Imp. purple/elec. purple Grape tumblers (6). Nice match to pitcher. selling choice
- ___ 13. Imp. purple Pansy relish dish. Nice irid.
- ___ 14. Imp. purple Pansy handled nappy. scarce
- ___ 15. Imp. purple Pansy low ruffled bowl. has nice elec. hi-lites. Scarce
- ___ 16. Imp. purple Flute 5 piece berry set. Nice multi color irid.
- ___ 17. Imp. purple Beaded Bullseye 12" vase. Nice!
- ___ 18. Imp. mari. Heavy Grape chop plate.
- ___ 19. **IMP. AMBER HATTIE CHOP PLATE. SUPER PIECE OF GLASS! A VERY DESIRABLE CHOP PLATE.**
- ___ 20. **Imp. elec. purple 12" Ripple mid size vase. Has a really neat top ruffle with a "spout" in one of the ruffles. Super nice.**
- ___ 21. **Imp. elec. purple Open Rose rosebowl. Super irid. on a hard to find rosebowl.**
- ___ 22. Imp. Grape mari. 6" flat plate.
- ___ 23. Imp. green Open Rose butterdish with lid. Old!
- ___ 24. Imp. lt. amy. Pansy 9" low ruffled plate.
- ___ 25. Imp. lt. amy./lavender Pansy sugar bowl.
- ___ 26. **Imp. mari. 474 punch bowl and base. Scarce.**
- ___ 27. **Imp. mari. Octagon water pitcher. Small size.**
- ___ 28. **Imp. elec. purple Cobblestone 6 ruffled 9" bowl. Super!**
- ___ 29. **FEN. AO DRAGON & LOTUS 9" 6-RUFFLE BOWL. A KEY ITEM FOR ANY AO COLLECTION.**
- ___ 30. **Fen. amber Dragon and Lotus 9" ruffled bowl. Scarce color.**
- ___ 31. **FEN. RED DRAGON & LOTUS 9" ICS BOWL. VERY RARE SHAPE FOR THIS. BASE HAS A LITTLE YELLOW IN IT. NICE IRID.**
- ___ 32. Fen. blue Dragon & Lotus 9" very low ICS bowl.
- ___ 33. **Fen. mari. Dragon & Strawberry 9" ICS bowl. Scarce. Nice detail and irid.**
- ___ 34. **Fen. mari. Kittens cup & saucer. Scarce.**
- ___ 35. **Fen. aqua Kittens dish, 4 sides up. Very scarce.**
- ___ 36. **Fen. aqua Fine Rib 8 3/4" vase. Scarce.**
- ___ 37. **Fen. blue Mikado giant compote, ruffled. Scarce.**
- ___ 38. **Fen. mari. Mikado Giant ICS compote. Scarce.**
- ___ 39. Fen. mari. Orange Tree loving cup.
- ___ 40. Fen. mari. Orange Tree powder jar with lid.
- ___ 41. Fen. mari. Panther footed master berry bowl.
- ___ 42. Fen. mari. Panther individual footed berry bowl.
- ___ 43. **Fen. blue Holly 9" plate. Very nice color. Scarce.**
- ___ 44. **Fen. mari. Holly 9" plate. Dark irid.**
- ___ 45. **Fen. mari. Little Fishes 9" master berry bowl, footed. Scarce.**
- ___ 46. **Fen. mari. Little Fishes 5" ruffled dish w/collar base. Satiny. Very scarce.**
- ___ 47. **Fen. red Butterfly and Berry 8 1/2" vase. Very nice irid. Does have a tiny nip on the bottom of the base.**
- ___ 48. **Fen. red Fine rib 8" vase. Nice irid.**
- ___ 49. Fen. blue April Showers 9 3/4" vase.
- ___ 50. Fen. blue Butterfly & Berry 9" vase.
- ___ 51. Fen. blue Paneled Diamond & Bows 7 1/2" vase.
- ___ 52. **Fen. red Holly ruffled compote. Scarce**
- ___ 53. Fen. green Holly stemmed compote, ruffled.
- ___ 54. Fen. blue Holly stemmed compote, ruffled.

55. Fen. purple Holly stemmed ruffled compote. Scarce color.
56. **FEN. GREEN 7" ELKS 1910 DETROIT 6-RUFFLE BOWL. Very scarce bowl.**
57. **N- PURPLE TREE TRUNK SQUATTY ELEPHANTS FOOT FUNERAL VASE. HERE'S A RARE ONE! VERY NICE MULTI-COLOR IRID. THROUGH-OUT! HARDLY EVER SOLD AT AUCTION! 13" X 8" WITH A 5 1/4" BASE.**
58. **N- purple Tree Trunk Mid size 13 1/2" funeral vase. Nice irid. Scarce**
59. **N- white Thin Rib mid-side funeral vase. Very scarce. Nice!**
60. **N- IB WISHBONE 9" FOOTED RUFFLED BOWL WITH SUPER IRID ON A VERY SCARCE BOWL.**
61. **N- FROSTY WHITE WISHBONE 9" RUFFLED BOWL, FOOTED. VERY SCARCE. NICE PASTEL IRID. HARDLY EVER SOLD.**
62. **N- blue Wishbone 9" ruffled bowl, footed. Super electric blue. Rare color. WOW!**
63. **N- MARI. WISHBONE 9" FT'D PLATE. VERY NICE DARK IRID. MAYBE THE HARDEST COLOR TO FIND OF THESE PLATES! RARE!**
64. **N- purple Corn vase w/plain base. Very scarce. Nice.**
65. **N- white Corn vase, plain base. Nice frosty irid. Scarce.**
66. **N. MARI. CORN VASE W/PLAIN BASE. VERY SCARCE COLOR.**
67. **N- green Greek Key 9" plate w/ BW ext. Nice multi-color irid. All Greek Key item are getting hard to find. Scarce**
68. **N- mari Greek Key 9" plate w/ rib back. Nice irid. Scarce.**
69. **N- GREEN TOWN PUMP. SUPER RARE ITEM THAT IS HARDLY EVER SOLD! HERE IT IS!! NICE!!**
70. **N- elec. purple Town Pump. Super irid on this very popular item. Hard to find with this kind of irid.**
71. **N- blue Beaded Cable footed rose bowl. Nice electric highlights.**
72. **N- blue Diamond Points 7" squatty vase.**
73. **N- blue Drapery candy dish. Feet are OK.**
74. **N- IB Drapery tri-corner footed candy dish. Very Nice!**
75. **N- blue Drapery rose bowl.**
76. **N- blue Fruit & Flowers 7" ruffled bowl.**
77. **N- mari. Fruit & Flowers stippled 6" bowl. Nice**
78. **N- IG Fruit & Flowers 7" ruffles bowl. Scarce color for a pastel.**
79. **N- IG FRUIT & FLOWERS 10" RUFFLES BOWL. RAREST COLOR FOR THIS AND HAS VERY NICE PASTEL IRID.**
80. **N- WHITE WISHBONE EPERGNE. SUPER NICE FROSTY IRID. A VERY RARE NORTHWOOD PASTEL ITEM.**
81. **N- blue G&C 2-handled bon bon w/multi color irid.**
82. **N- green G&C 2-handled bon bon.**
83. **N- green Fern stemmed compote.**
84. **N- mari. Harvest Poppy stemmed compote. Getting scarce.**
85. **N- purple Blossomtime compote. Very nice irid.**
86. **N- AO Four Pillars 11" vase. Perfect feet.**
87. **N- blue Thin Rib 10" vase.**
88. **N- blue Tree Trunk 10 1/2" vase. Scarce.**
89. **N- Citrine green Four Pillars 11" vase.**
90. **N- ELEC. PURPLE TORNADO VASE, SMALL SIZE. SUPER EXAMPLE OF A HARD TO FIND VASE.**
91. **N- green Tree Trunk 11 1/2" vases (2). Choice.**
92. **N- green Thin Rib 13 1/2" mid-size funeral vase. Very tough color.**
93. **N- mari. Thin rib 10 1/2" mid size funeral vase. Pretty pink irid.**
94. **N- mari. Thin rib 10 1/2" vase. Nice satin irid.**
95. **N- IG Thin Rib 11" vase. Nice pastel color on a rare vase.**
96. **N- IB Thin Rib 10" vase. Scarce color and pretty!**
97. **N- white Thin Rib 10 1/4" vase. Very scarce. Has nice pastel irid.**
98. **N- Russet green Thin & Wide Rib 10 1/2" vase**
99. **N- WHITE PEACOCK AT THE FOUNTAIN WATER PITCHER. WOW!! TONS OF BLUE IRID. A KEEPER!**
100. **N- white Rose Show 9" deep plate. Frosty.**

- ___ 101. N- white Rose Show 9" ruffled bowl. Very nice multicolor irid.
- ___ 102. N- mari. Rose Show 9" ruffled bowl. Super! Always a popular item.
- ___ 103. N- white Grape Arbor water pitcher. Rare piece that is hardly ever sold! Super frosty irid.
- ___ 104. N- purple Peacock at Fountain water pitcher. Nice color and detail. Scarce
- ___ 105. N- purple Peacock at Fountain tumblers (6). selling choice
- ___ 106. N- **RENNINGER BLUE PEACOCK AT THE FOUNTAIN PUNCH BOWL W/BASE. VERY RARE COLOR. Not many of these around!**
- ___ 107. N- mari. Peacock at the Fountain punch bowl with base. Nice irid.
- ___ 108. N- **PASTEL AO GOOD LUCK 9" RUFFLED BOWL W/RIBBED BACK. SUPER PASTEL IRID. WONDERFUL EXAMPLE!**
- ___ 109. N- blue Good Luck 9" PCE bowl w/Ribbed back. Thin collar base. Nice multicolor irid.
- ___ 110. N- green Good Luck 9" PCE bowl w/BW back. Very Nice! Tough to find w/ BW back
- ___ 111. N- mari Good Luck 9" stippled plate w/ rib ext. Very nice multi-color irid. Here's a very scarce Northwood plate!
- ___ 112. N- green Good Luck 9" plate w/BW back. Scarce.
- ___ 113. N- purple Good Luck 9" plate. Very nice multi-color irid. Scarce
- ___ 114. M-BURG BLUE PEACOCK AT THE URN 5" ICS BOWL. NICE SATINY IRID. NO BEE, NO BEADS. RARE.
- ___ 115. M-burg amy. Peacock at Urn 10" master IC bowl. Very scarce! Nice radium Irid.
- ___ 116. M-burg mari Trout and Fly 3-1 edge bowl. Very nice satin irid. Scarce
- ___ 117. M-burg mari. Big Fish 9" 3-1 edge bowl. Scarce w/ pretty satin irid.
- ___ 118. M-burg purple Hobnail swirl spittoon. Nice radium irid on a very scarce item!
- ___ 119. M-burg purple Hobnail rosebowl. Very scarce. Radium irid.
- ___ 120. M-burg mari. Hobnail rosebowl. Nice radium irid.
- ___ 121. M-burg mari. Swirl Hobnail rosebowl. Nice dark radium example.
- ___ 122. M-burg mari. Swirl Hobnail Spittoon. Very scarce. Radium.
- ___ 123. M-BURG AMY. COURTHOUSE RUFFLED BOWL. RADIUM IRID. VERY SCARCE! NICE ONE.
- ___ 124. M-burg green Peacock Tail Variet stemmed compote. Radium. Super!
- ___ 124a. M-burg purple Roselind Stemmed small compote. Nice radium irid. Scarce!
- ___ 125. M-burg green Mayan 8" ICS bowl.
- ___ 126. M-burg green Hanging Cherries 7" ICS bowl. Nice bright irid.
- ___ 127. M-burg amy. Whirling Leaves 9 1/2" 6-ruffle bowl. Radium.
- ___ 128. M-burg amy. Blackberry Wreath 6" low 3-1 edge bowl.
- ___ 129. M-burg amy Nesting Swan 9 1/2" 6-ruffle bowl. Radium.
- ___ 130. M-burg mari. Little Stars 7 1/2" ruffled bowl. Scarce. Satin irid.
- ___ 131. M-burg mari. Hanging Cherries 7 1/4" low ICS bowl. Nice and satiny.
- ___ 132. M-burg mari. Blackberry Wreath 6" ruffled berry bowl. Radium blue irid.!!
- ___ 133. M-burg mari Holly Sprig handled bonbon.
- ___ 134. M-burg amy. Holly Whirl 9 1/2" 6-ruffle bowl. Radium.
- ___ 135. FEN. Lime Green Opal STRAWBERRY 2-HANDLED BON BON. HAS HEAVY OPAL ON A RARE PIECE. NICE!!
- ___ 136. Fen. IG Two Row Open Edge 6-ruffle basket. Large size. Scarce and Nice!
- ___ 137. Fen. mari. Coral 9" ICE bowl. Very scarce.
- ___ 138. Fen. green Coral 9" ICS bowl. Very scarce color. Nice!
- ___ 139. Fen. amy. Concord 9" ruffled bowl.
- ___ 140. Fen. mari. Concord 9" ruffled bowl. Scarce.
- ___ 141. FEN. MARI. PEACOCK & GRAPES 9" PLATE. SCARCE PLATE W/BB EXT. RADIUM. SUPER!
- ___ 142. Fen. mari. Peacock & Grapes 9" plate, spatula footed w/Plain ext.. Very scarce and pretty.
- ___ 143. Fen. blue Peacock & Grapes 9" plate w/BB ext. Very scarce.

- ___ 144. **FEN. AMY. UTAH LIQUORS 2 SIDES UP PLATE. VERY SCARCE. NICE IRID. & SUPER DETAIL**
- ___ 145. **FEN. AMY. PARADISE SODAS 6" PLATE. VERY SCARCE. NOT MANY ADVERTISING PIECES SOLD LATELY.**
- ___ 146. **Fen. blue Peacock at the Urn 9" plate w/BB ext. Nice multicolor irid.**
- ___ 147. **Fen. mari. Peacock at the Urn 9" plate w/BB ext. Nice.**
- ___ 148. **Fen. amy. Peacock at Urn 9" 8-ruffle bowl w/ BB ext. Supe irid.**
- ___ 149. **Fen. blue Peacock at the Urn 9" ICS bowl w/BB ext. Nice multicolor irid.**
- ___ 150. **Fen. green Peacock at the Urn 9" 8-ruffle bowl w/BB ext. Fantastic blue irid. Very Scarce. Super!**
- ___ 151. **FEN. WHITE CHERRY CHAIN 11" CHOP PLATE. VERY SCARCE PLATE W/NICE BLUE IRID.**
- ___ 152. **Fen. red/ red amberina Waterlily 5" ft'd ruffled bowl. Scarce. Nice color**
- ___ 153. **Fen. red/ light red Stippled rays 6" ruffled bowl. Very odd color of red. Scarce.**
- ___ 154. **Fen. purple Three fruits 12 sided 9" plate.**
- ___ 155. **Fen. green Orange Tree 9" 3-1 edge bowl w/Trunk center.**
- ___ 156. **Fen. blue Persian Medallion 9" plate.**
- ___ 157. **Fen. blue Persian Medallion 10" 3-1 edge bowl with very nice multicolor irid.**
- ___ 158. **Fen. blue Heart & Vine 9" flat plate. Real nice purple irid. on blue. Scarce.**
- ___ 159. **Fen. blue Fluffy Peacock tumbler. Scarce.**
- ___ 160. **FEN. MARI. HEARTS & TREES FOOTED BOWL. HERE IS A BOWL THAT IS HARDLY EVER SOLD! VERY PRETTY DARK EXAMPLE.**
- ___ 161. **Fen. green Butterfly & Fern water pitcher. Probably the rarest color in this. Nice irid.**
- ___ 162. **Fen. green Butterfly & Berry water pitcher. Two tiny nicks on handle and may have nick in pattern. Hard to find. Super blue irid.**
- ___ 163. **Fen. green Butterfly & Berry master berry flared bowl, footed.**
- ___ 164. **Fen. blue Captive Rose 9" plate.**
- ___ 165. **FEN. BLUE DRAGON & LOTUS 9" FLAT PLATE. GREAT IRID. ON A SCARCE PLATE.**
- ___ 166. **Fen. mari. Stag & Holly 9" plate, spatula footed. Very nice irid. on a rare plate!**
- ___ 167. **Fen. mari. Sailboats 6" plate. Very nice color. Scarce.**
- ___ 168. **Fen. blue Paneled Dandelion tankard pitcher. Scarce, pretty and nice irid.**
- ___ 169. **Fen. blue Paneled Dandelion tumblers (4). 4x money.**
- ___ 170. **Fen. blue Stag & Holly 10" ruffled bowl, footed. Scarce.**
- ___ 171. **Fen. blue Two Flowers footed rose bowl, small size. Nice.**
- ___ 172. **N- IB PEACOCKS ON THE FENCE 9" PLATE W/RIBBED BACK. SUPER PASTEL IRID ON A VERY RARE PLATE.**
- ___ 173. **N- white Peacock on the Fence 9" plate w/ plain back. Frosty. Scarce.**
- ___ 174. **N- green Peacocks on the Fence 9" PCE bowl w/BW back. Very scarce bowl.**
- ___ 175. **N- green Peacocks on the Fence 9" ruffled bowl w/Ribbed back, thin color base. Super irid.**
- ___ 176. **N- AO PEACOCKS ON THE FENCE 9" RUFFLED BOWL W/RIBBED BACK. SMOKY PASTEL IRID.**
- ___ 177. **N- lt. amy. Peacocks on the Fence 9" ruffled bowl with ribbed back. Very odd base color.**
- ___ 178. **N- blue Peacocks ruffled bowl w/ rib back. Very nice multi-color irid.**
- ___ 179. **N- IG PEACOCKS ON THE FENCE 9" RUFFLED BOWL W/RIBBED BACK. VERY SCARCE COLOR. VERY PRETTY BOWL.**
- ___ 180. **N- mari. Peacocks on the Fence 9" ruffled bowl w/Ribbed back.**
- ___ 181. **N- mari. Peacocks on the Fence stippled 9" ruffled bowl w/Ribbed back. Nice dark example. Very Scarce.**
- ___ 182. **N- purple Peacocks 9" ruffled bowl w/ rib ext. Very nice irid. Scarce**
- ___ 183. **N- purple Peacock at Urn 10" Master IC bowl. Has beautiful multi-color irid. with elec. hilites Nice!**
- ___ 184. **N- white Peacock at the urn master ice cream bowl. Nice frosty irid. Getting harder to find each year.**

- ___ 185. N- white Peacock at the urn 5" ice cream bowls (2). Very nice! Scarce. Choice.
- ___ 186. **N- MARI. G&C BANDED/STIPPLED COLOGNE BOTTLES WITH STOPPERS. (2) STOPPERS ARE BANDED. VERY RARE. CHOICE.**
- ___ 187. N- mari. G&C powder jar with lid.
- ___ 188. **N- lavender G&C cologne bottle with stopper. Tough color to find!**
- ___ 189. **N- mari. G&C perfume bottle with stopper. Scarce.**
- ___ 190. **N- purple Grape & Cable cologne bottle w/ stopper. Scarce**
- ___ 191. **N- purple Grape & Cable Hatpin holder.**
- ___ 192. **N- purple Grape & Cable Perfume bottle. Scarce. A bit silvery.**
- ___ 193. N- purple Grape & Cable stippled powder jar bottom. Scarce.
- ___ 194. N- horehound G&C powder jar bottom.
- ___ 195. N- mari .G&C hatpin holder.
- ___ 196. **N- mari. G&C stippled punch bowl & base. Very scarce-Nice color!**
- ___ 197. **N- mari. Peacock at the Fountain butter with lid. Scarce.**
- ___ 198. **N- mari. Strawberry 9" stippled ruffled bowl. Very nice. Has tiny nip on flute.**
- ___ 199. **N- green Strawberry 9" plate w/plain ext. Nice irid.**
- ___ 200. N- purple Strawberry 9" plate w/ plain back. Nice
- ___ 201. **N- purple Strawberry 9" stippled plate w/rib back. nice irid. Scarce**
- ___ 202. N- purple Strawberry ruffled bowl. scarce
- ___ 203. **N- AO Three Fruits Medallion stippled ruffled bowl. Nice butterscotch color.**
- ___ 204. **N- AO Three Fruits stippled 9" ruffled bowl w/Ribbed back and collar base. Super example.**
- ___ 205. **N- blue Three Fruits stippled 9" plate w/Ribbed back. Super electric irid.**
- ___ 206. N- mari 3 Fruits 9" plate w/ BW ext. Nice
- ___ 207. **N- mari. 3 Fruits 9" stippled bowl w/rib ext. Scarce**
- ___ 208. **N- purple 3 Fruits 9" stippled plate. Very nice irid on a scarce plate.**
- ___ 209. N- purple 3 Fruits medallion 9" spatula ft'd bowl Scarce.
- ___ 210. **N- Blue Peacock at the Fountain footed fruit bowl. Scarce.**
- ___ 211. **N- AO Dandelion shaving mug. Super pastel blue irid.**
- ___ 212. **N- AO Fruit & Flowers stemmed bon bon. Nice butterscotch irid.**
- ___ 213. **N- blue Hearts & Flowers 9" PCE bowl w/Rib back. Nice multicolor irid.**
- ___ 214. **N- blue Hearts & Flowers stemmed compote. Super multicolor rainbow irid. Scarce.**
- ___ 215. **N- IB Hearts & Flowers 9" ruffled bowl w/Ribbed back.**
- ___ 216. **N- IB Hearts & Flowers stemmed compote. Very nice pastel irid.**
- ___ 217. **N- FROSTY WHITE DAISY & PLUME FOOTED ROSEBOWL W/RASPBERRY INT. ONE OF THE HARDEST COLORS TO FIND. SCARCE.**
- ___ 218. **N- IB Daisy & Plume footed and ruffled candy dish w/Blackberry interior. Super pastel irid.! Feet look OK. Very Scarce!**
- ___ 219. **N- IB Embroidered Mums 9" ruffled bowl w/Ribbed back. Nice dark IB w/multicolor irid.**
- ___ 220. N- blue Singing Birds mug.
- ___ 221. N- green Singing Birds mug.
- ___ 222. **N- frosty white Tree Trunk 10 1/2" vase. Scarce.**
- ___ 223. N- green Diamond Points 10" vase.
- ___ 224. **N- blue Poinsettia and Lattice ft'd ruffled bowl. Very scarce, has very nice elec hilites.**
- ___ 225. **N- BLUE ROSE SHOW 9" PLATE. NICE MULTICOLOR IRID. ROSES LOOK TO BE OK. Very scarce!**
- ___ 226. **N- IB POPPY SHOW 9" RUFFLED BOWL. VERY NICE MULTI-COLOR IRID. SCARCE. HERE'S A TOUGHY!**
- ___ 227. **N- Ice Green G&C 9" FOOTED RUFFLED BOWL W/MEANDER EXT. SUPER IRID. BASE COLOR IS ONE SHADE AWAY FROM BEING LIME.**
- ___ 228. **N- Lt. amy/ lav. Grape & Cable Sweetmeat. Has real nice multi-color irid. Scarce color.**
- ___ 229. **N- mari G&C 7 piece water set. Nice!**
- ___ 230. **N- purple Drapery rosebowl. Scarce**
- ___ 231. **N- Green Grape and Cable 9" stippled plate w/rib back. Very scarce.**
- ___ 232. **N- purple Grape & Cable 6" plate. Scarce.**

- ___ 233. **N- AO GRAPE AND CABLE 9" STIPPLED PCE BOWL W/ RIB EXT. VERY NICE OPAL AND IRID. A VERY SCARCE BOWL! NICE.**
- ___ 234. **N- purple Grape & Cable 9" stippled PCE bowl. Very scarce bowl.**
- ___ 235. **N- elec. purple Grape and Cable 9" plate w/ plain back. SUPER!**
- ___ 236. **N- purple Leaf and Beads ft'd rosebowl. Very nice irid. Scarce**
- ___ 237. **DUGAN PURPLE FARMYARD SQUARE BOWL. HAS SUPER ELEC. HI-LITES THROUGH OUT! HOW MANY OF THESE DO YA GET A CHANCE TO BUY! HERE'S A RARITY!**
- ___ 238. **DUGAN ELEC. PURPLE WISHBONE AND SPADES CHOP PLATE. VERY NICE ELEC. RADIUM IRID. SUPER SCARCE!**
- ___ 239. **Dugan elec. purple Wishbone and Spades 6" plate w/ BW ext. Super, Super irid!! RARE!**
- ___ 240. **DUGAN ELEC. PURPLE PERSIAN GARDEN CHOP PLATE. AN ABSOLUTELY WONDERFUL EXAMPLE! Very scarce. Does have small chip on 1 flute. Iridescence on this chop plate more than makes up for the little chip on this 100 year old beautiful piece of glass.**
- ___ 241. **Dugan elec. purple Cherries 6" plate w /TCE. Wonderful elec. irid. SUPER!**
- ___ 242. **Dugan mari. Brooklyn Bridge 9" ruffled bow. Scarce.**
- ___ 243. **Dugan purple Wishbone and Spades 9" ruffled bowl. Has nice multi-color irid.**
- ___ 244. **Dugan purple Wishbone and Spades 5" berry bowls (4) Choice.**
- ___ 245. **Dugan purple Round-up low ruffled bowl / plate. Nice multi color irid.**
- ___ 246. **Dugan purple Fanciful 9" ICS bowl. scarce.**
- ___ 247. **Dugan peach opal Target 10 3/4" vase. Scarce**
- ___ 248. **Dugan peach opal Round-up 9" low ruffled plate / bowl. Nice irid & opal.**
- ___ 249. **Dugan peach opal Pulled loops 9 1/2" vase. Nice.**
- ___ 250. **Dugan peach opal Garden Path Vari. chop plate w/ soda gold ext. VERY RARE! The bad news...Has a crack from the edge to middle. Fantastic opal/irid.**
- ___ 251. **Dugan peach opal Cherries 9" ruffled bowl**
- ___ 252. **Dugan peach opal Bells and Beads 7" ruffled bowl. scarce.**
- ___ 253. **Dugan peach opal Apple Blossom Twigs 9" plate w/ smooth edge & BW back. Very scarce plate with great color.**
- ___ 254. **Dugan peach opal Apple Blossom Twigs 9" six ruffled bowl w/ plain back. Nice!**
- ___ 255. **Dugan mari. Pastel swan salt.**
- ___ 256. **DUGAN ELEC. PURPLE CHERRIES 9" FT'D 10 RUFFLED BOWL. HOLY SMOKES! HAS AN ELEC. RADIANT IRID.! IS THERE ONE BETTER?**
- ___ 257. **DUGAN CELESTE BLUE PULLED LOOP 11" VASE. VERY RARE COLOR FOR THIS VASE.**
- ___ 258. **Dugan blue Lattice & Points 9" vase.**
- ___ 259. **Dugan white Petal & Fan 10" ruffled bowl, Jeweled Heart ext. Scarce.**
- ___ 260. **N- green Star of David & Bows 9" low ruffled bowl.**
- ___ 261. **N- horehound Plain Petals 7" ruffled bowl w/BW ext.**
- ___ 262. **N- green G&C 9" plate w/plain back.**
- ___ 263. **N- IB Nippon 9" PCE bowl.**
- ___ 264. **N- mari. Beaded Cable footed rose bowl.**
- ___ 265. **N- mari. Bushel basket, 8 sided.**
- ___ 266. **N- mari. Leaf & Beads rose bowl w/Sunflower interior.**
- ___ 267. **N- mari. Poppy relish dish. Very nice irid.**
- ___ 268. **N- mari. Tree Trunk squatty vase.**
- ___ 269. **N- purple Fine rib 11" vase with nice elec. irid. Scarce.**
- ___ 270. **N- purple Grape & Cable Vari. 9" plate w/ BW Ext.**
- ___ 271. **N- purple Grape & Cable tumbler.**
- ___ 272. **N- purple Poppy Show Ruffled bowl. Has chip on inside edge. Does have nice irid.**
- ___ 273. **N- purple Stippled rays 9" ruffled bowl**
- ___ 274. **N- purple Wild rose 8" ft'd bowl with turned out heart edge.**
- ___ 275. **Fen. mari. Paneled Diamonds & Bows 8" vase.**
- ___ 276. **Fen. amy. Autumn Acorns 9" ICS bowl.**
- ___ 277. **Fen. amy. Butterfly & Fern tumbler.**
- ___ 278. **Fen. amy. Captive Rose 9" ruffled bowl.**
- ___ 279. **Fen. amy. Persian Medallion stemmed compote, large size.**

- ___ 280. **Fen. amy. Ribbon Tie 9" 3-1 edge bowl. Great example.**
- ___ 281. Fen. blue Autumn Acorn 9" 6-ruffle bowl.
- ___ 282. Fen. blue Feather Stitch 9" ruffled bowl.
- ___ 283. Fen. blue Orange Tree powder jar with lid. Chip on shank of lid. Nice irid.
- ___ 284. Fen. blue Orange Tree punch cup.
- ___ 285. **Fen. blue Ribbon Tie 9" 3-1 edge low bowl. Super irid.**
- ___ 286. Fen. green Peacock tail stemmed compote.
- ___ 287. Fen. mari. Waterlily& Cattail tumblers(5
- ___ 288. **Fen. mari. Wreath of Roses tri-corner rosebowl.**
- ___ 289. Fen. blue Horseheads Medallion 6 1/2" deep round bowl. Nice pressing. Tiny pinhead in pattern.
- ___ 290. Fen. blue Little Flowers 9" master berry bowl.
- ___ 291. **Fen. blue Two Flowers 10" large ruffled bowl, ball footed.**
- ___ 292. Fen. blue Two Row Open Ege 6-ruffle basket. small size.
- ___ 293. Fen. blue Waterlily 5" footed bowl.
- ___ 294. Fen. green Captive Rose 9" 3-1 edge bowl.
- ___ 295. Fen. green Fenton's Flowers rose bowl.
- ___ 296. Fen. green Wreath of Roses punch cups. Vintage interior.
- ___ 297. **Fen. red Acorn 6" deep round bowl. Very nice irid. Scarce.**
- ___ 298. Fen. mari. Autumn Acorn 9" ICS bowl.
- ___ 299. Fen. mari. Bouquet water pitcher.
- ___ 300. Fen. mari. Bouquet tumbler.
- ___ 301. Fen. mari. Captive Rose 9" candy ribbon edge bowl.
- ___ 302. **Fen. mari. Horseheads Medallion 8" flat plate. Scarce.**
- ___ 303. Fen. mari. Illusion 2-handled bon bon.
- ___ 304. Dugan blue maple Leaf spooner (old)
- ___ 305. Dugan amy. Floral & Grape tumbler.
- ___ 306. Dugan mari. Fisherman's mug.
- ___ 307. Dugan mari. Persian Garden 6" plate.
- ___ 308. Dugan mari. Pony 6-ruffle bowl.
- ___ 309. Dugan mari. Wreathed cherry tumblers(4).1 money
- ___ 310. **Dugan peach opal Wide Rib mid-size squatty vase.**
- ___ 311. Dugan purple Beaded Shell mug. Nice irid. Scarce
- ___ 312. Dugan purple Circle Scroll creamer. Chip on base
- ___ 313. Fen. mari. Fentonia sugar with lid. Has chip.
- ___ 314. Fen. mari. Scale Band tumbler.
- ___ 315. Dugan blue Rambler Rose tumblers (2) 2x money.
- ___ 316. N- white Wide panel epergne base. Where 1 lily sets is broken off.
- ___ 317. Asst'd pieces of carnival that has damage. choice.

Jim Wroda Auction Services

PO Box 1111 Gettysburg, Ohio 45328

937-447-8909 or Horatio@wesnet.com Visit our website at www.jimwrodauction.com

Interested in having an auction? We are currently accepting consignments of 1 piece or entire collections. Please fill out the form below and mail it to the above address, or give Jim a call at 937-447-8909 to discuss your auction.

Name: _____

Address: _____

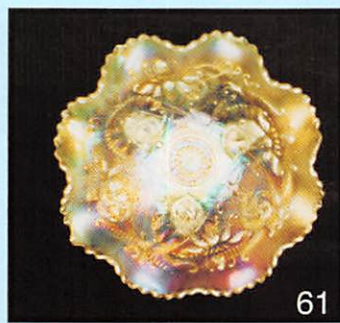
Phone: _____ when to contact you: _____

We auction one item to entire estates. Specializing in Carnival glass, RS Prussia, Coins, Toys, Pottery, Nippon, Estate Auctions and General line antiques.

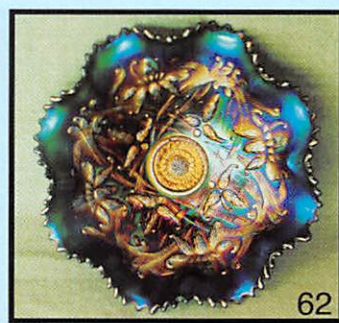
Give us a call, Your Professional Auctioneer is here to help you with your auction.



233



61



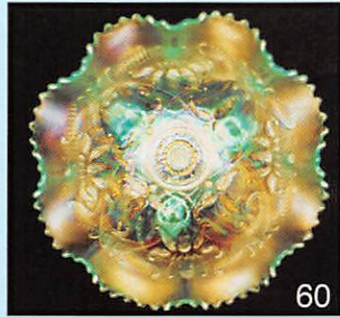
62



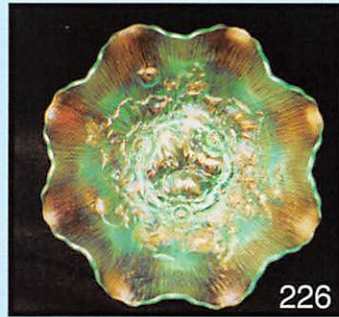
174



109



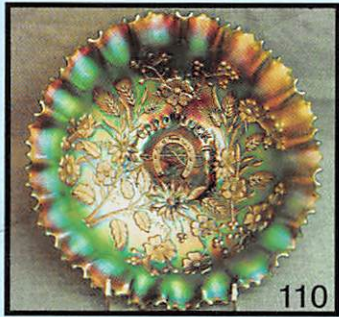
60



226



181



110



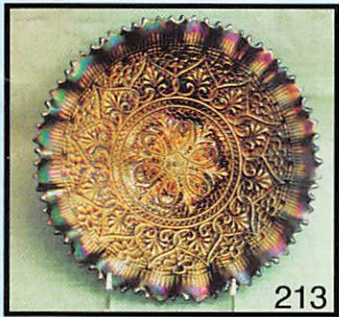
56



123



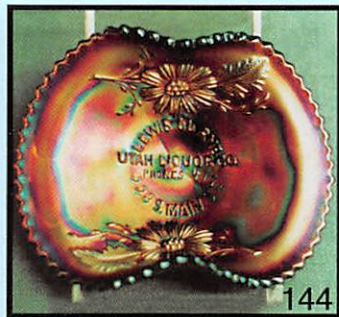
176



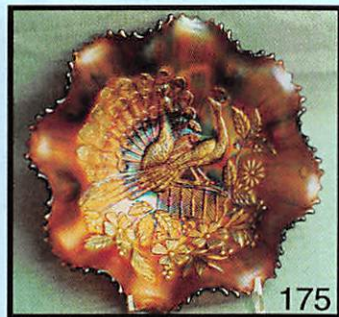
213



145



144



175



215



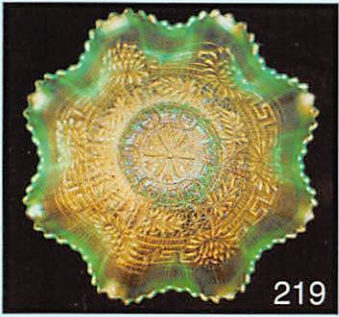
135



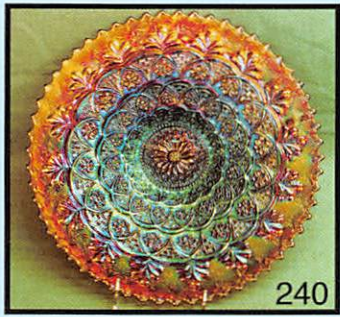
212



177



219



240



256



179

