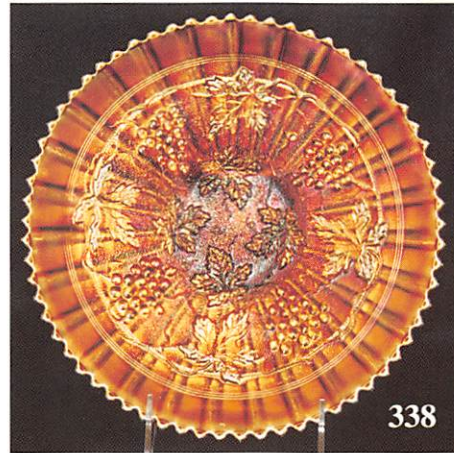


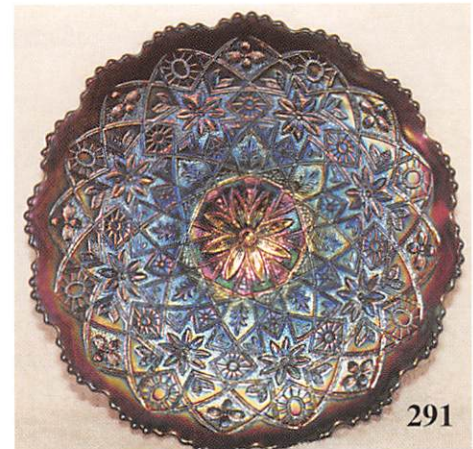
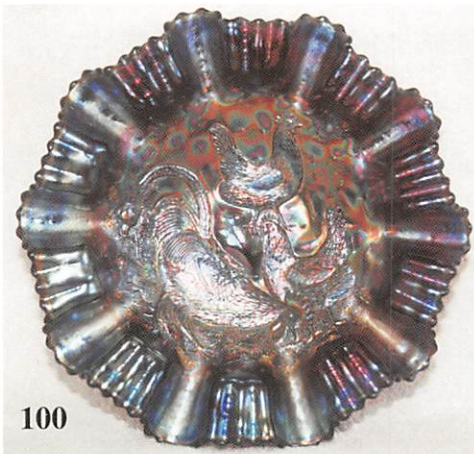
# AUCTION

*Texas Carnival Glass Club*

*Convention*



*Collection of Alan and Pat Johnson*  
Saturday, February 17, 2001 -- 9:30 A.M.



Crowne Plaza Hotel  
Dallas, Texas

7800 Alpha Road (Coit Rd & LBJ 635 Expressway North)  
Texas Auction License #10758

*Seeck Auctions*  
Jim and Jan Seeck 641-424-1116

# SATURDAY, FEBRUARY 17th, 2001 -- 9:30 am

## Crowne Plaza Hotel - Dallas, Texas

NO BUYER'S PREMIUM.

This year at the Texas Club Convention Auction we will be selling the collection of Alan and Pat Johnson from Northern California. Over the years, they have put together a wonderful array of glass that should please most all collectors. It has been a long, cold & snowy winter for a lot us! If you are looking for some warm Texas hospitality to brighten your winter blues, make reservations today for the convention and auction!

For Texas Club information contact Matzi Thrasher: (281)351-2202. Make your reservations soon! (972)233-7600. Mention the club for a special rate. \$95/suite/breakfast for 2/social reception. Cut-off date for special discounted rate is February 3, 2001.

Texas Club Website: <http://www.texascarnivalglass.org>

**8.25% Sales Tax will be charged. Please bring your sales tax number with you.**

### ABSENTEE BID POLICY

1. Write-in bids will be accepted by sending the numbers of the item(s) desired and the amount bid on each to: **Seeck Auctions, PO Box 377, Mason City, Iowa 50402.**
2. If known by Auction Company, bids may be done over the telephone. (641)424-1116.
3. You may **email** your bids to us: **[jimjan@seeckauction.com](mailto:jimjan@seeckauction.com)** Continue to include the numbers of the item(s) you would like to bid on and amount bid on each, please include your telephone number.
4. There is a \$5 handling charge for each successful bid. Shipping and insurance charges are additional.
5. Bidders will be notified by phone if their bid(s) are successful. This call will be made 1 - 3 days after the auction.
6. Please have all bids in by **Thurs., Feb 15th.** All bids (by mail, phone or **email**) after this date may not be carried out.
7. Please place bids in the following increments: \$1 to \$300 - \$5 increments \$300 up - \$25 increments.
8. **If you do not receive an item that sold for less than your bid, assume we cancelled your bid because the piece of glass had below average color, manufacture problem, damage or was not listed correctly.**
9. We are discontinuing the availability of our auction price lists. Since so many people are online or have access to a computer, the need for this has slowly gone away. Auction results are posted on our website within 5 days of the auction (depending on drive time home from the sale.) Also results are available in many of the club newsletters.

**WEBSITE: <http://www.seeckauction.com>**

- |  |  |
|--|--|
| ___ 1. Four Flowers large ruffled bowl w/Soda Gold back - marigold   | ___ 16. Grape & Cable master IC bowl - green - scarce & highly desirable, pretty     |
| ___ 2. Windmill ruffled bowl - purple - a beauty   | ___ 17. Grape & Cable master IC bowl - purple - scarce & nice                        |
| ___ 3. Scroll Embossed large ruffled bowl w/file back - marigold   | ___ 18. Grape & Cable master IC shaped bowl - marigold - scarce, pretty              |
| ___ 4. Diamond Points 10" vases (3) - purple - choice  | ___ 19. Windflower ruffled bowl - marigold   |
| ___ 5. Diamond Points 10" vase - green   | ___ 20. Garden Path Variant ruffled bowl - purple - a rare bowl, super pretty        |
| ___ 6. Diamond Points 11" vases (2) - marigold - choice  | ___ 21. Grape & Cable bon bon - green  |
| ___ 7. Dragon & Lotus ruffled bowl - amber - scarce color  | ___ 22. Grape & Cable bon bon - marigold - nice                                      |
| ___ 8. Dragon & Lotus ruffled bowl - green - silvery   | ___ 23. Waterlily large ftd IC shaped bowl - blue - spectacular, electric & super    |
| ___ 9. Dragon & Lotus ruffled bowl - marigold - nice   | ___ 24. Waterlily large ftd IC shaped bowl - marigold - pretty                       |
| ___ 10. N's Thin Rib midsize funeral vases (2) - blue - both electric & super, great matching pair, choice | ___ 25. N's Wide Panel 13 1/2" funeral vases (2) - green - 4 3/4" base, choice       |
| ___ 11. N's Thin Rib 12" midsize funeral vase - purple scarce  | ___ 26. Floral & Grape 9 pc. water set - marigold                                    |
| ___ 12. Orange Tree master berry bowl - marigold - normal feet   | ___ 27. Lined Lattice 5" squatty vase - purple - has 5 3/4" mouth, neat vase, pretty |
| ___ 13. M'burg Mayan IC shaped bowl - green - radium   | ___ 28. Rose Show 9" plate - purple - electric & super, as nice as they get          |
| ___ 14. Fenton's Thin Rib 16" vases (2) - blue - choice  |  |
| ___ 15. Feathered Serpent 3 in 1 edge large bowl - marigold  |  |

- \_\_\_ 29. **Rose Show 9" plate - marigold - very pretty w/yellow & pink irid.**
- \_\_\_ 30. Windflower 9" plate - marigold - nice
- \_\_\_ 31. Three Fruits 9" plates w/plain backs (2) - purple - pretty, choice
- \_\_\_ 32. Rustic 8 3/4" midsize squatty vase - green - this used to be call M'burg Hobnail, neat
- \_\_\_ 33. Rustic 12 1/2" midsize vase - green - swung a bit more than the last
- \_\_\_ 34. Rustic 16 3/4" midsize vase - green - swung a lot more
- \_\_\_ 35. Rustic 17" midsize vases (2) - amethyst - choice
- \_\_\_ 36. Rustic 17" midsize vases (2) - blue - choice
- \_\_\_ 37. Rustic 17" midsize vases (3) - marigold - choice
- \_\_\_ 38. Grape Leaves ruffled bowl - purple - nice
- \_\_\_ 39. Grape Leaves ruffled bowl - marigold
- \_\_\_ 40. **Plaid ruffled bowl - teal green - super pretty irid. w/unusual tint to color, most of these are not pretty, this one is fantastic**
- \_\_\_ 41. Feathered Serpent large ruffled bowl - green
- \_\_\_ 42. Feathered Serpent large ruffled bowl - marigold - pretty
- \_\_\_ 43. **Drapery 7 3/4" vase - sapphire - a super pretty vase, very hard to find, has minor nicks on feet, WOW**
- \_\_\_ 44. **Drapery 7 1/2" vase - green - also rare color, very pretty, minor nick on foot**
- \_\_\_ 45. Crabclaw 4 pc. waterset - marigold - chip on pitcher lip
- \_\_\_ 46. Heavy Grape large ruffled berry bowl - purple - pretty
- \_\_\_ 47. Heavy Grape small ruffled berry bowl - purple
- \_\_\_ 48. Plume Panels 10" vases (2) - green - choice
- \_\_\_ 49. Persian Garden 6" plate - marigold
- \_\_\_ 50. **Memphis 8 pc. punch set - white - frosty & super, extremely rare & desirable, a top piece in the auction**
- \_\_\_ 51. **Memphis punch bowl & base - marigold - pretty & very scarce**
- \_\_\_ 52. Autumn Acorn IC shaped bowl - amethyst - pretty
- \_\_\_ 53. Autumn Acorn IC shaped bowl - green
- \_\_\_ 54. Stag & Holly large ftd IC shaped bowls (2) - blue - both super & hard to find, choice
- \_\_\_ 55. Stag & Holly large ftd IC shaped bowls (2) - marigold - nice, choice
- \_\_\_ 56. April Showers 6" squatty vase - amethyst - has Peacock Tail interior
- \_\_\_ 57. April Showers 6" squatty vases (2) - green - have Peacock Tail interior, choice
- \_\_\_ 58. **Peacock & Grape ruffled bowl - red - super pretty example, w/cherry red color**
- \_\_\_ 59. Peacock & Grape ruffled bowl - blue
- \_\_\_ 60. Peacock & Grape ruffled bowls (2) - marigold - choice
- \_\_\_ 61. **Panelled Dandelion 7 pc. tankard water set - green - scarce set & nice**
- \_\_\_ 62. Ripple 12" vases (2) - purple - has 3 3/8" base, choice
- \_\_\_ 63. Ripple 12" vases (2) - green - 3 3/8" base, choice
- \_\_\_ 64. Ripple 12" vase - smoke - 3 3/8" base
- \_\_\_ 65. **Wide Panel epergne - green - super pretty, has large chip out of the side at the top of the base, very scarce & highly desirable**
- \_\_\_ 66. **Wide Panel epergne - marigold - super pretty, does have minor nicks were lilies fit in**
- \_\_\_ 67. Fishscale & Beads 6" ruffled bowl - marigold
- \_\_\_ 68. Wishbone ftd ruffled bowls (2) - purple - choice
- \_\_\_ 69. Petal & Fan ruffled sauce - purple
- \_\_\_ 70. Imperial Grape 8 pc. punch set - green - scarce
- \_\_\_ 71. Imperial Grape punch bowl & base - marigold
- \_\_\_ 72. Big Basketweave 9" vase - amethyst
- \_\_\_ 73. **Fanciful 9" plate - blue - quite scarce & pretty**
- \_\_\_ 74. Imperial Grape wine bottles (2) w/stoppers - marigold - choice
- \_\_\_ 75. Imperial Grape wine bottle w/stopper - green
- \_\_\_ 76. Heavy Iris tankard water pitcher - marigold - scarce & nice
- \_\_\_ 77. M'burg Holly Sprig ruffled bowl - marigold - satin
- \_\_\_ 78. Imperial Grape ruffled bowl - purple - electric & pretty
- \_\_\_ 79. **Loganberry vase - purple - super pretty & very scarce, a dandy!**
- \_\_\_ 80. Loganberry vase - green - scarce
- \_\_\_ 81. Bo Peep mugs (2) - marigold - choice
- \_\_\_ 82. John H. Brand Co. Furniture Adv. Open Edge 2 sides up hat - marigold
- \_\_\_ 83. M'burg Primrose large ruffled bowl - green - satin, scarce
- \_\_\_ 84. Oriental Poppy tankard water pitcher - green - very pretty, has crack at top of handle where applied to pitcher
- \_\_\_ 85. Oriental Poppy tumblers (3) - green - choice
- \_\_\_ 86. Oriental Poppy tankard water pitcher - purple - pretty, cracked
- \_\_\_ 87. **Oriental Poppy tankard water pitcher - marigold - pretty**
- \_\_\_ 88. Oriental Poppy tumbler - marigold
- \_\_\_ 89. Cherry Chain large ruffled bowl - marigold - pretty
- \_\_\_ 90. Heavy Grape chop plate - purple - minor wear on grapes, pretty
- \_\_\_ 91. Heavy Grape chop plate - green
- \_\_\_ 92. Heavy Grape chop plate - marigold
- \_\_\_ 93. Grape & Cable Cologne bottles (2) - green - sold as pair, one is cracked on base, other is perfect & nice
- \_\_\_ 94. **Grape & Cable cologne bottle - purple - a beauty**
- \_\_\_ 95. Grape & Cable cologne bottles (2) - marigold - choice
- \_\_\_ 96. M'burg Blackberry Wreath ruffled sauce - amethyst - satin & nice
- \_\_\_ 97. **Heavy Grape 8" plate - purple - super**
- \_\_\_ 98. Orange Tree fruit bowl - blue - pretty, scarce
- \_\_\_ 99. Fenton's Grape & Cable card tray shaped 7" bowl - marigold - unusual shape

- \_\_\_ **100. Farmacyard 3 in 1 edge bowl - purple - absolutely super, as nice as they get, a spectacular piece**
- \_\_\_ 101. Memphis master berry bowl - marigold
- \_\_\_ **102. Holly 9" plate - amethyst - scarce & pretty**
- \_\_\_ 103. Holly 9" plate - green - scarce
- \_\_\_ 104. Holly 9" plate - blue - scarce
- \_\_\_ 105. Holly 9" plate - marigold - nice
- \_\_\_ 106. M'burg Whirling Leaves ruffled bowl - amethyst - radium & nice
- \_\_\_ 107. Luster Rose large ruffled bowl w/collar base - purple - super pretty!
- \_\_\_ **108. Round Up ruffled bowl - peach opal - pretty**
- \_\_\_ 109. Leaf Columns 6" squatty vase - purple - scarce & very pretty
- \_\_\_ **110. Wishbone 10" PCE bowl - green - super pretty, scarce**
- \_\_\_ 111. Nautilus sugar bowl - peach opal - nice
- \_\_\_ 112. Miniature Morning Glory 5" vases (2) - purple - both super, choice
- \_\_\_ 113. Miniature Morning Glory 5" vase - lavender - has marigold overlay w/light lavender base
- \_\_\_ 114. Miniature Morning Glory 5" vase - marigold
- \_\_\_ **115. Fenton's Peacock at Urn ruffled bowl - green - scarce color**
- \_\_\_ 116. Fenton's Peacock at Urn ruffled bowl - blue
- \_\_\_ **117. Formal JIP vase - purple - extremely rare & nice**
- \_\_\_ 118. Persian Medallion 6" plate - blue - absolutely super
- \_\_\_ **119. Imperial Grape large size ruffled bowls (2) - purple - both super, choice**
- \_\_\_ 120. Grape & Cable hatpin holder - marigold - chips on feet
- \_\_\_ **121. Diamond & Sunburst decanter - purple - very scarce item, nice**
- \_\_\_ 122. Diamond & Sunburst decanter - marigold - super
- \_\_\_ **123. N's Stippled Peacock at Urn master IC bowl - blue - electric & fantastic, probably the finest stippled version I've seen**
- \_\_\_ 124. N's Thin Rib 6 1/2" vase - green
- \_\_\_ 125. Grape & Cable 9" plate w/BW back - purple
- \_\_\_ 126. Grape & Cable 9" plate w/BW back - marigold - nice
- \_\_\_ **127. Mikado IC shaped compote - blue - electric & fantastic, beautiful**
- \_\_\_ 128. Mikado IC shaped compote - marigold - also nice
- \_\_\_ **129. Good Luck ruffled bowls w/ribbed back (2) - blue - both nice, choice**
- \_\_\_ 130. Heart & Vine CRE bowl - blue
- \_\_\_ **131. Dragon & Lotus IC shaped bowl - red - fantastic, looks cherry red, a beauty!**
- \_\_\_ 132. Dragon & Lotus IC shaped bowl - marigold - nice
- \_\_\_ **133. M'burg Poppy round shaped compote - green - radium & super, highly sought after compote**
- \_\_\_ 134. Grape & Cable humidor - purple - chip on base
- \_\_\_ **135. Acorn Burrs 8 pc. punch set - purple - very pretty set, scarce & highly desirable**
- \_\_\_ 136. Drapery Variant 8 1/2" vase - marigold - scarce, minor pinpoint on base
- \_\_\_ **137. Persian Garden 11" IC shaped bowl - purple - extremely rare & nice**
- \_\_\_ **138. Embroidered Mums ruffled bowl - blue - scarce & desirable**
- \_\_\_ 139. Oval & Round 11" chop plate - marigold
- \_\_\_ **140. Orange Tree 9" plates (2) - blue - one is a screamer, choice**
- \_\_\_ 141. Inverted Feather cracker jar - green - nice
- \_\_\_ **142. Wishbone & Spades 11" chop plate - purple - super pretty irid. on this very scarce plate**
- \_\_\_ 143. M'burg Nesting Swan ruffled bowl - marigold - satin
- \_\_\_ **144. Lattice & Grape tankard water pitcher - blue - scarce & very nice for these**
- \_\_\_ 145. Ripple 20" funeral vase - green - 4 5/8" base, scarce in this large size
- \_\_\_ 146. Ripple 18 1/2" funeral vase - marigold - 4 5/8" base, scarce
- \_\_\_ **147. Thumbprint & Ovals vase - purple - exceptional quality & rarity, does have minor no harm pit at top, really nice!**
- \_\_\_ **148. Thumbprint & Ovals vase - marigold - very nice & very scarce**
- \_\_\_ 149. Ten Mums 3 in 1 edge large bowl - amethyst
- \_\_\_ **150. Butterfly & Tulip ftd square bowl - purple - extremely rare & nice, a carnival classic**
- \_\_\_ 151. Ripple 6 1/2" vase - green - 2 1/2" base
- \_\_\_ 152. Ripple 7" vase - marigold - 2 1/2" base
- \_\_\_ 153. Thistle banana boat - green - very scarce & nice
- \_\_\_ 154. Thistle banana boat - marigold
- \_\_\_ **155. M'burg Ohio Star vase - purple - extremely rare vase, a bit silvery, has chips on top edge**
- \_\_\_ 156. Fruits & Flowers 10" ruffled bowl w/BW back - purple - pretty
- \_\_\_ **157. M'burg Peacock at Urn master IC shaped bowl - green - satin & super, quite rare!**
- \_\_\_ 158. Good Luck PCE bowl w/BW back - purple - chip on edge
- \_\_\_ 159. Good Luck PCE Bowls w/ribbed backs (2) - marigold - choice
- \_\_\_ **160. Tornado large size vase - green - scarce & desirable**
- \_\_\_ 161. Tornado large size vase - marigold - chip on base
- \_\_\_ **162. Stippled Three Fruits ruffled bowl w/ribbed back - blue - scarce & desirable**
- \_\_\_ 163. Grape Vine lattice ruffled sauce - marigold
- \_\_\_ 164. Fenton's Grape & Cable fruit bowl w/Persian Medallion interior - green - scarce & pretty
- \_\_\_ 165. Fenton's Grape & Cable fruit bowl w/Persian Medallion interior - purple - scarce
- \_\_\_ 166. Octagon 4 pc. wine set - marigold

- \_\_\_ **167. Poppy Show vase - smoke - absolutely super, extremely rare & desirable, nice piece!**
- \_\_\_ **168. Poppy Show vase - purple - also extremely rare, has gold & silver irid.**
- \_\_\_ 169. Six Petals tri-cornered bowl - purple - electric & super
- \_\_\_ **170. Stippled Peacocks 9" plate w/ribbed back - blue - electric & pretty**
- \_\_\_ 171. Luster Rose 11" ruffled bowl - smoke
- \_\_\_ **172. Wreath of Roses w/Persian Medallion interior 8 pc. punch set - green - super pretty & scarce, a great set!**
- \_\_\_ 173. Tree Trunk midsize vase w/plunger base - purple - very scarce w/plunger base, does have nick on top edge
- \_\_\_ 174. Grape & Cable ruffled bowl w/BW back - green
- \_\_\_ **175. N's Peacock at Urn chop plate - purple - super nice example, has pretty as these get, rare & desirable**
- \_\_\_ 176. Ripple 10 1/2" vase - teal - has 2 7/8" base
- \_\_\_ 177. Petal & Fan large size ruffled bowl - purple - very scarce
- \_\_\_ 178. Open Rose 9" plate - amber - has manufacture peeling on base
- \_\_\_ 179. M'burg Hanging Cherries 7" low IC shaped bowl - amethyst - satin & super pretty, has large chip on base, some may call this a plate
- \_\_\_ **180. Stag & Holly chop plate - marigold - extremely rare & nice, tough piece**
- \_\_\_ 181. Hearts & Flowers ruffled compote - marigold - nice
- \_\_\_ **182. Dandelion tankard water pitcher - purple - super pretty, a top quality Northwood tankard**
- \_\_\_ 183. Dandelion tumblers (2) - purple - both super, choice
- \_\_\_ **184. N's Town Pump - purple - highly desirable piece & pretty, a carnival classic**
- \_\_\_ 185. M'burg Rosiland large ruffled bowl - green - satin & nice
- \_\_\_ **186. Memphis 8 pc. fruit bowl set - purple - very pretty set & scarce, highly desirable pattern**
- \_\_\_ 187. Morning Glory funeral vases (2) 15 1/2" & 17 1/2" - marigold - both nice, choice
- \_\_\_ 188. Grape Arbor tankard water pitcher - purple - super nice, minor rub on spout
- \_\_\_ 189. Grape Arbor tankard water pitcher - marigold
- \_\_\_ **190. Farmyard square ruffled bowl - purple - silver & gold irid., cracked**
- \_\_\_ 191. Miniature Morning Glory 7" vases (2) - marigold - choice
- \_\_\_ 192. Ripple 9 1/2" vase - green - 3 3/8" base
- \_\_\_ **193. Tornado small size vase - purple - pretty, minor pinpoint on top edge of base**
- \_\_\_ 194. Persian Medallion 11" chop plate - blue - very scarce & nice
- \_\_\_ 195. N's Grape & Cable fruit bowl - purple - nice
- \_\_\_ 196. Grape & Cable covered compote - purple - minor nick inside lid
- \_\_\_ 197. Acorn ruffled bowl - brick red - has minor buffing on edge
- \_\_\_ 198. Acorn ruffled bowl - powder blue w/marigold overlay - nice
- \_\_\_ 199. Grape & Cable whiskey decanters (2) - purple - both have roughness where stoppers fit in, choice
- \_\_\_ 200. Grape & Cable shot glass - purple
- \_\_\_ **201. Wishbone & Spades banana boat shaped large ruffled bowl - peach opal - unusual whimsey & nice**
- \_\_\_ **202. Fenton's Fine Rib 10" vases (2) - red - super nice examples, choice**
- \_\_\_ 203. Fenton's Fine Rib 10 1/2" vase - green - scarce color for these, nice
- \_\_\_ 204. Fenton's Fine Rib 11 1/2" vases (2) - blue - choice
- \_\_\_ **205. Grape & Cable round shaped small size 8 pc. punch set - marigold - scarce shape & pretty, hard set to find**
- \_\_\_ **206. Ftd Fine Rib JIP shaped vase - purple - scarce & beautiful, the Northwood version**
- \_\_\_ **207. Stippled & Banded N's Grape & Cable large orange bowl - blue - electric & super! a great piece, manufacture open bubble in one grape**
- \_\_\_ 208. Sunflower & Diamond 9" vase - marigold
- \_\_\_ 209. Peacocks PCE bowl w/ribbed back - purple - silver/gold irid.
- \_\_\_ 210. Grape & Cable banana boat - green - scarce color & nice
- \_\_\_ 211. Parlor Panels 10" vase - marigold
- \_\_\_ 212. Grape & Cable dresser tray - green - nice, minor nick on edge
- \_\_\_ 213. Grape & Cable cracker jar - purple - pinpoint on grape
- \_\_\_ 214. M'burg Seaweed 3 in 1 edge bowl - minor buffing on base, satin
- \_\_\_ **215. Persian Medallion 9" plate - blue - very scarce & beautiful**
- \_\_\_ 216. Buzz Saw cruet w/no stopper - marigold
- \_\_\_ 217. Persian Garden large size ruffled bowl - peach opal - scarce & pretty
- \_\_\_ 218. Grape & Cable sweetmeat - purple - minor repair on edge of lid
- \_\_\_ **219. Wishbone & Spades chop plates (2) - purple - hard to find 3 in one auction, very rare items, nice, choice**
- \_\_\_ 220. Tree Trunk midsize 12 vase - purple - desirable
- \_\_\_ 221. Grape & Cable 11" ruffled bowl w/BW back - pastel marigold - lots of yellow & pink irid.
- \_\_\_ 222. Orange Tree w/Trunk ruffled bowl - blue - has electric highlights
- \_\_\_ 223. Orange Tree ruffled bowl - marigold
- \_\_\_ **224. Wishbone 9" ftd plate - purple - super pretty, nice even irid.**
- \_\_\_ 225. Windmill 6 pc. water set - marigold
- \_\_\_ 226. Stag & Holly large ftd ruffled bowl - blue - nice, scarce
- \_\_\_ 227. Scroll Embossed ruffled compote w/Eastern Star back - purple - super! Imperial at it's best

- \_\_\_ 228. Grape & Cable small size ruffled 8 pc. ruffled punch set - purple - very nice set, highly desirable
- \_\_\_ 229. Jain 9 1/2" fish vase - marigold
- \_\_\_ 230. Fanciful ruffled bowl - purple - scarce & nice
- \_\_\_ 231. Two Flowers large ftd ruffled bowl - blue - very pretty
- \_\_\_ 232. Two Flowers large size ftd ruffled bowls (2) - marigold - choice
- \_\_\_ 233. Colonial Lady vase - purple - extremely rare vase & nice
- \_\_\_ 234. Grape & Cable ftd 9" plates (2) - green - choice
- \_\_\_ 235. Grape & Cable ftd 9" plate - amethyst
- \_\_\_ 236. Stippled Robin mug - marigold
- \_\_\_ 237. Orange Tree Loving Cup - blue - spectacular, a beauty!
- \_\_\_ 238. Apple Blossom Twigs low ruffled bowl - blue - scarce & nice
- \_\_\_ 239. Nippon ruffled bowl w/BW back - green - super pretty
- \_\_\_ 240. Freefold 10 1/2" vase - purple - super pretty
- \_\_\_ 241. Victorian large ruffled bowl - purple - scarce bowl & as nice as we've sold
- \_\_\_ 242. Fashion punch bowl & base - marigold
- \_\_\_ 243. Stippled Three Fruits 9" plate w/ribbed back - purple - super example, minor wear on fruit
- \_\_\_ 244. Persian Medallion hair receiver - marigold
- \_\_\_ 245. Persian Medallion rosebowl - marigold
- \_\_\_ 246. Peacocks 9" plate w/ribbed back - purple - super pretty, one point made of epoxy
- \_\_\_ 247. Three Fruits 9" plate w/BW back - green
- \_\_\_ 248. Three Fruits 9" plate w/BW back - marigold
- \_\_\_ 249. Dugan's Cherries 3 in 1 edge ftd bowl - purple - electric & fantastic, this is great!
- \_\_\_ 250. Pulled Loop 11" vase - blue - scarce color
- \_\_\_ 251. Pulled Loop 11" vase - purple - base chip
- \_\_\_ 252. Grape & Cable tobacco humidor - marigold - minor buffing on lid
- \_\_\_ 253. Scroll Embossed ruffled small size compote - purple - super
- \_\_\_ 254. Imperial Grape 5 pc. round berry set - purple - super set
- \_\_\_ 255. Tree Trunk 6" squatty vase - green - scarce
- \_\_\_ 256. Tree Trunk 6" squatty vase - purple
- \_\_\_ 257. N's Peacock at Urn master IC bowl - ice green - scarce & highly desirable
- \_\_\_ 258. N's Peacock at Urn master IC bowl - ice blue - extremely scarce & pretty
- \_\_\_ 259. N's Peacock at Urn master IC bowl - blue - very scarce color, highly desirable
- \_\_\_ 260. N's Peacock at Urn master IC bowl - purple - flat example & nice, scarce
- \_\_\_ 261. N's Peacock at Urn master IC bowl - marigold - nice example
- \_\_\_ 262. Lined Lattice 7 1/2" vase - purple - nice
- \_\_\_ 263. M'burg Primrose ruffled bowl - green - satin, pretty
- \_\_\_ 264. Star & File 7 pc. water set - marigold
- \_\_\_ 265. Captive Rose 9" plate - blue - scarce & desirable
- \_\_\_ 266. Strawberry 9" plate w/BW back - purple - very pretty
- \_\_\_ 267. Grape & Cable spooner - marigold - chip on thumbprint
- \_\_\_ 268. Miniature Thin Rib & Drape 5" vase - marigold - cute
- \_\_\_ 269. Flowers & Frames dome ftd ruffled bowl - purple - electric & super
- \_\_\_ 270. M'burg Blackberry Wreath 8" IC shaped bowl - green - satin & nice
- \_\_\_ 271. Pony 10 ruffled bowl - amethyst - scarce color, very nice
- \_\_\_ 272. Beaded Cable rosebowl - purple - rayed interior
- \_\_\_ 273. Many Fruits punch bowl & base - purple - super pretty, minor rubbing around outside edge
- \_\_\_ 274. Lattice & Points 7 1/2" vase - amethyst
- \_\_\_ 275. Pansy ruffled bowl - purple
- \_\_\_ 276. Persian Medallion 3 in 1 edge bowl - marigold
- \_\_\_ 277. Fenton's Peacock at Urn 9" plate - blue - very pretty example, scarce
- \_\_\_ 278. Ripple 6 3/4" vase - purple - has 2 7/8" base
- \_\_\_ 279. Raspberry milk pitcher - marigold
- \_\_\_ 280. Holly CRE bowl - blue
- \_\_\_ 281. Four Flowers chop plate - peach opal - scarce & nice
- \_\_\_ 282. Diamond & Column 16" vase - blue
- \_\_\_ 283. Diamond & Column 14" vase - marigold
- \_\_\_ 284. Luster Rose creamer - purple - super fantastic, scarce
- \_\_\_ 285. Corn bottle - marigold - scarce & nice
- \_\_\_ 286. Chrysanthemum large IC shaped ftd bowl - marigold - nice
- \_\_\_ 287. Jeweled Heart large size ruffled bowl w/rayed interior - purple - super pretty!
- \_\_\_ 288. Leaf Chain IC shaped bowl - amethyst
- \_\_\_ 289. Rustic 9 1/2" vase - amethyst
- \_\_\_ 290. Strawberry ruffled bowl w/plain back - purple - absolutely scrumptous but has one point off
- \_\_\_ 291. Hattie chop plate - purple - electric & fantastic, extremely rare & desirable, a great piece of glass
- \_\_\_ 292. Fenton's Three Fruits 12 sided 9" plate - green
- \_\_\_ 293. Circle Scroll 8" vase - marigold - very scarce
- \_\_\_ 294. Leaf & Beads rosebowl - blue
- \_\_\_ 295. Flowers & Frames dome ftd deep ruffled bowl - purple - nice!
- \_\_\_ 296. Octagon large size water pitcher - marigold
- \_\_\_ 297. Peacocks PCE bowl w/BW back - green - extremely rare bowl especially w/BW back, nice
- \_\_\_ 298. Grape & Cable creamer - purple - pretty
- \_\_\_ 299. Rose Show 9" plate - purple - super! chip off edge
- \_\_\_ 300. N's Thin Rib 11" vase - amethyst
- \_\_\_ 301. N's Thin Rib 11" vase - marigold
- \_\_\_ 302. Holly IC shaped bowl - green - fantastic irid.
- \_\_\_ 303. Vintage 3 in 1 edge bowl - green

- \_\_\_ 304. Leaf Chain 9" plate - marigold - fantastic, scarce & desirable
- \_\_\_ 305. Grape & Cable 9" plate w/plain back - green - chip on point
- \_\_\_ 306. Grape & Cable Variant 9" plate w/plain back - purple
- \_\_\_ 307. Rustic 16" vase w/CRE edge - marigold
- \_\_\_ 308. Fenton's Flowers rosebowl - blue
- \_\_\_ 309. Heart & Vine ruffled bowl - green
- \_\_\_ 310. Octagon 8" vase - marigold - scarce, minor nick on one tooth on base
- \_\_\_ 311. Thistle 3 in 1 edge bowl - green
- \_\_\_ 312. Wreathed Cherry master banana boat - purple
- \_\_\_ 313. M'burg Blackberry Wreath 10" ruffled bowl - green - satin, pretty
- \_\_\_ 314. Three Fruits ruffled bowl w/BW back - marigold
- \_\_\_ 315. Pinecone 6" plate - marigold
- \_\_\_ 316. Star & File 3 pc. wine set - marigold
- \_\_\_ 317. Holly 3 in 1 edge bowl - lime green w/marigold overlay - color is very faint, pretty
- \_\_\_ 318. Imperial Grape 9" plate - green
- \_\_\_ 319. Ripple 16" vase - marigold - has 3 7/8" base
- \_\_\_ 320. Persian Medallion large round bowl - amethyst - super pretty!
- \_\_\_ 321. Tree Trunk 9 1/2" vase - green
- \_\_\_ 322. Poinsettia & Lattice ftd ruffled bowl w/ribbed back - ice blue - very pretty irid. on this rare bowl, extremely hard to find
- \_\_\_ 323. Star & Fan wine bottle - marigold
- \_\_\_ 324. Dogwood Spray dome ftd deep ruffled bowl - peach opal - nick on dome foot
- \_\_\_ 325. Columbia ruffled bowl - marigold
- \_\_\_ 326. Ribbon Tie CRE bowl - amethyst
- \_\_\_ 327. N's Bushel Basket - blue
- \_\_\_ 328. Two Flowers spt ftd ruffled bowl - marigold
- \_\_\_ 329. Peacock & Grape spt ftd 9" plate - marigold - scarce
- \_\_\_ 330. Scales IC shaped bowl - marigold on milkglass - nice
- \_\_\_ 331. Dragon & Lotus spt ftd ruffled bowl - marigold
- \_\_\_ 332. Vintage 10" IC shaped bowl - marigold
- \_\_\_ 333. N's Wide Panel midsize 12 1/2" vase - green
- \_\_\_ 334. Fenton's Peacock at Urn IC shaped bowl - marigold - pretty
- \_\_\_ 335. Fruits & Flowers bon bon - blue - electric & pretty
- \_\_\_ 336. Four Pillars 11" vase - purple - pretty
- \_\_\_ 337. Fenton's Grape & Cable spt ftd ruffled bowl - marigold
- \_\_\_ 338. Stippled Grape & Cable Variant 9" plate w/ribbed back - marigold - pumpkin & pretty, dark, fantastic, extremely rare, WOW!
- \_\_\_ 339. Fine Cut & Roses rosebowl - custard - not carnival
- \_\_\_ 340. Windmill deep round sauce - purple
- \_\_\_ 341. Rococco vase - marigold
- \_\_\_ 342. Golden Harvest wines (11) - marigold - choice
- \_\_\_ 343. Lot of 12 pieces of glass w/damage - choice, no list available
- \_\_\_ 344. Large lot of Carnival Glass & antique books - choice - no list available

## TEXAS CARNIVAL GLASS CLUB

Feb. 15th - 18th CONVENTION 2001 Registration Form

**PLEASE PRINT CLEARLY**

Date \_\_\_\_\_

First Name \_\_\_\_\_ Spouse/Other \_\_\_\_\_ Last Name \_\_\_\_\_

Address: \_\_\_\_\_

City/State/Zip: \_\_\_\_\_

Phone: \_\_\_\_\_ E-mail: \_\_\_\_\_

Registration Fee <b>\$5.00 (\$10.00 after Feb 1, 2001)</b> .....	\$ _____
Membership Dues ( <b>\$20 USA \$25 Outside USA</b> ) .....	\$ _____
Thursday Members' BBQ <b>FREE</b> number attending: ( _____ ) .....	<b>\$ FREE</b>
Bus Ride* to BBQ and Open house Thursday <b>\$1.00</b> number attending: ( _____ ) X <b>\$1.00</b> .....	\$ _____
<i>*(approx. 40 miles one way, seating limited to first 56)</i>	
Friday Night Members' Buffet ( <b>\$20.00 ea</b> ) number attending: ( _____ ) X <b>\$20.00</b> .....	\$ _____
Saturday Members' Awards Banquet ( <b>\$25.00 ea</b> ) number attending: ( _____ ) X <b>\$25.00</b> .....	\$ _____
T-Shirts XL XXL (only) ( <b>\$15.00 ea</b> ) quantity: ( _____ ) X <b>\$15.00</b> .....	\$ _____
TOTAL AMOUNT PAID (remember registration fee) . . . \$ _____	
Method of payment: <i>Check number</i> _____ <b>CASH</b> \$ _____	

Make Checks Payable To: Texas Carnival Glass Club

Please mail this form to: Matzi Thrasher, 611 W. Main Street, Tomball, Texas 77375-5500 Phone: 281-351-2202

# Seeck Auctions

P.O. Box 377  
Mason City, Iowa 50402

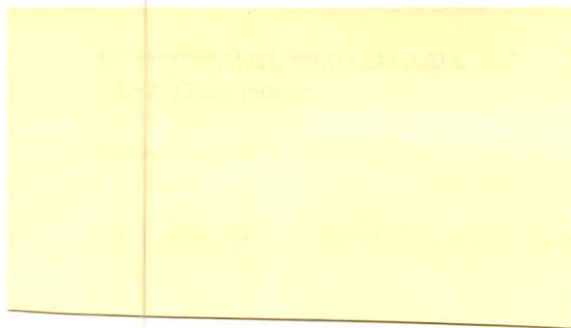
PRESORTED  
FIRST-CLASS MAIL  
U.S. POSTAGE PAID  
MINNEAPOLIS, MN  
PERMIT NO.28534



147

79

117



135



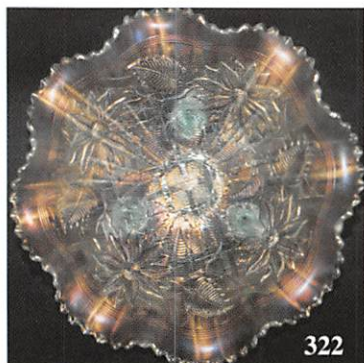
142



123



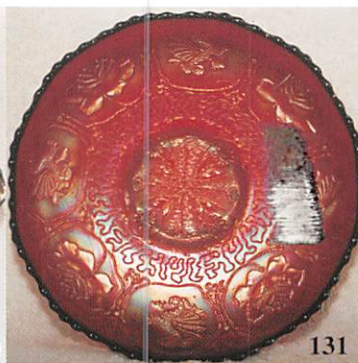
127



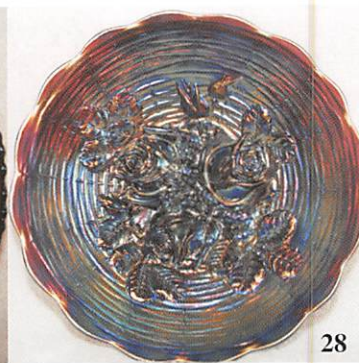
322



150



131



28