

BURNS

AUCTION SERVICE

Tampa Bay Carnival Glass Club Convention Auction

Friday, February 9, 2001

Preview – 2:00 P.M.

Auction – 4:00 P.M.

at the

Hampton Inn-Clearwater Central

21030 US Route 19

Clearwater, Florida 33765

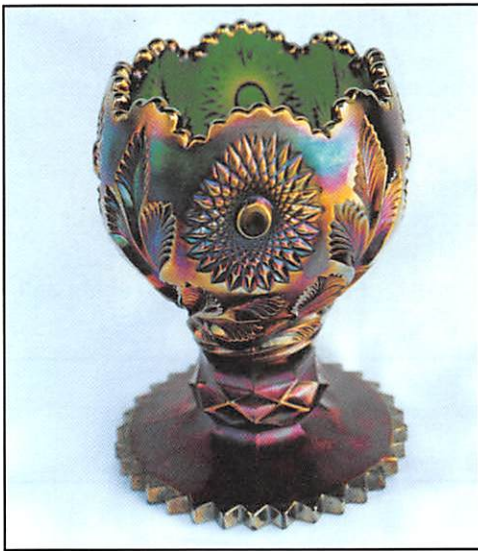
(727) 797-8173

(On Route 19 between Gulf to Bay and Drew Avenue)

William Richards, III

Auctioneer

Florida License Number AU0001621



The second of our Florida Double-Play takes place in Clearwater at the Tampa Bay Carnival Glass Club Jamboree, to be held at the Hampton Inn-Central on US Route 19.

This year's auction contains glass from the Conner collection in Ohio, the Heatons in Indiana, as well as glass from other parts of this country and others! This is one of the better selections we've had here lately and I'm sure anyone who attends will not be disappointed.

The convention will be held at the Hampton Inn-Central on US 19 North near the Route 60 Causeway (Gulf to Bay) which runs by the Tampa Airport, easy to find and a great place to be this time of year. For reservations call the hotel direct at (727) 797-8173, or for more information call Guy Nelson, President, at (941) 764-9452.

For other information (like on our March 9 – 10, 2001 Decker Collection Auction) call, write, or e-mail us. Now go along and have a good day!

CHECK OUT BURNS AUCTION SERVICE ON THE WEB!

Visit our new Web site for information on upcoming auctions, complete auction listings and photos of auction highlights. You can e-mail your bids or requests for information.

<http://carnival.ksnews.com/burnsauction> e-mail: brnzauctsv@aol.com

BURNS AUCTION SERVICE

Tom Burns
P.O. Box 608, Bath, NY 14810
(607) 776-7942
Cell #: (607) 731-9302 (do not leave messages)

Bill Richards
44 Water St., Poland, OH 44514
(330) 757-2001
FAX (330)-757-4917

Bill Richards, III
2253 Country Lane
Poland, OH 44514
(330) 755-2620

Mail Bids honored under the following conditions:

1. No deposit required, Bidders will take full responsibility to honor any and all bids we execute for them. Payment in full plus postage and handling required after notification and before we ship any item to them.
2. Items are bid on in perfect condition with average or above average iridescence OR as listed in the brochures. Bids will not be carried out when damage on an item has been found during the auction. **PEOPLE PRESENT AT AUCTION ARE RESPONSIBLE FOR FINDING ANY PINHEADS, WEAR, SPOTTINESS, MANUFACTURER'S DEFECTS OR ANY OTHER MINOR FLAWS, ETC.**
3. Successful bidders will be notified by collect call from the auctioneer (**so be sure to include the phone number**).
4. Phone inquiries about the glass or any other questions are welcome.
5. If you have some other person at the auction bidding for you, they must pay for the item before taking it.
6. Any terms or conditions given the day of the auction will supersede any previously published information.
7. Mail, e-mail, fax and phone bids are due by Wednesday, February 7, 2001.

- | | |
|--|--|
| <p>_____ 1. 1985 C.C.G.A. Fenton Lg. Two Row Open Edge J.I.P. Hat – Aqua Opal. (scarce souvenir)</p> <p>_____ 2. Fenton Persian Medallion Round Two Handled Bon Bon – Milk Glass (scarce; not carnival)</p> <p>_____ 3. Dugan Many Fruits Handled Punch Cup – Mari. (nice irid.)</p> <p>_____ 4. Unsigned Hansen Geometric Star Patterned Tumbler – Red (very scarce; has tiny chip on base)</p> <p>_____ 5. ROOSTER HATPIN – RED SLAG (RARE ITEM; GREAT COLOR AND IRID.)</p> <p>_____ 6. Fenton Rose Spray Goblet Shaped Stemmed Compote – Mari. (nice color and detail)</p> <p>_____ 7. (2) Maker ? Floral Enameled Decorated Barber Bottles – Mari. (very scarce; selling so much each for pair)</p> <p>_____ 8. Fenton Stretch Tumble Up Base Only – Velva Rose (where's the tumbler)</p> <p>_____ 9. Pair U.S. Glass Stretch Bell Shaped Candlesticks w/ Spiral Mold – Celeste Blue (rare pair w/ great color; tough to find)</p> <p>_____ 10. N BEADED CABLE FTD. ROSE BOWL – ICE BLUE (RARE AND VERY DESIRABLE; A DARKER TINT; REALLY NICE)</p> <p>_____ 11. N Drapery Rose Bowl – Blue Opal. (very rare item; not carnival)</p> <p>_____ 12. N G & C Covered Sugar Bowl – Green (great color; base has some damage)</p> <p>_____ 13. Dugan Venetian Line Bulbous Pinched In Vase – Amyth. (very scarce item; nice foot and desirable shape)</p> <p>_____ 14. 9" Westmoreland Corinth Swung Vase – Mari./ Milk Glass (rare and desirable w/ a nice mari. overlay)</p> | <p>_____ 15. FENTON HORSEHEAD FTD. FLARED NUT BOWL – DK. MARI./ VASELINE (HAS TO BE THE BEST EXAMPLE I'VE SEEN; YELLOW BASE GLASS W/ A DARK MARI. OVERLAY)</p> <p>_____ 16. IMPERIAL LUSTRE ROSE LG. 6 RUFFLED FTD. FRUIT BOWL – SMOKE (RARE AND DESIRABLE; GREAT IRID. AND TOUGH)</p> <p>_____ 17. 6" Imperial Open Rose 8 Ruffled Sauce – Smoke (super irid.)</p> <p>_____ 18. Imperial Flute Toothpick Holder – Purp. (super irid.)</p> <p>_____ 19. N G & C 7 Pc. Water Set – Purp. (pitcher cracked)</p> <p>_____ 20. M'BURG HOBSTAR AND FEATHER GIANT FTD. ROSE BOWL – GREEN (RARE AND EXTREMELY DESIRABLE W/ GREAT COLOR AND IRID.; NICE!)</p> <p>_____ 21. M'BURG STRAWBERRY WREATH STEMMED 6 RUFFLED COMPOTE – AMYTH. (VERY SCARCE W/ EXCELLENT RADIUM IRID.)</p> <p>_____ 22. 5-1/2-6" Tall Dugan Target Squatty Flared Vase – White (very scarce w/ nice irid. and very frosty)</p> <p>_____ 23. 8-1/2" FENTON DRAGON & LOTUS 8 RUFFLED BOWL – P. OPAL. (RARE AND VERY DESIRABLE; NICE OPAL. AND GREAT IRID.)</p> <p>_____ 24. N PEACOCK AT THE FOUNTAIN TUMBLER – GOLD FLASH/ AMYTH. (EXTREMELY RARE N'WOOD ITEM; VERY DIFFERENT)</p> <p>_____ 25. N THREE FRUITS STIPPLED BOWL W/ P.C.E. AND BASKETWEAVE EXT. – EMERALD GREEN (RARE AND VERY DESIRABLE; SUPER BRIGHT COLOR AND IRID.)</p> <p>_____ 26. N Diamond Point Handled Bushel Basket – Clear (scarce item)</p> |
|--|--|

- ____ 27. N Diamond Point 3 Ftd. Bowl – Clear (very scarce item)
- ____ 28. N Peacocks Ruffled Bowl w/ Ribbed Ext. – Blue Opal. (very scarce and desirable; not carnival – opal near edge)
- ____ 29. 12" Tall N Diamond Point Swung Vase – Blue Opal. (scarce and desirable; has super opal.)
- ____ 30. **N ROSE SHOW FLARED PLATE – MARI. (RARE AND DESIRABLE; NICE EVEN DARKER COLOR AND IRID.)**
- ____ 31. N G & C Stippled Plate w/ Basketweave Ext. – Green (rare and desirable item but has a 1/4" burn spot on edge)
- ____ 32. N G & C Plate w/ Basketweave Ext. – Amyth. (scarce; very nice multi-colored irid.)
- ____ 32A. **N G & C FTD. OVAL BANANA BOAT – ICE BLUE (RARE AND DESIRABLE COLOR; NICE AND PERFECT)**
- ____ 33. **N G & C 11 PC. TABLE SIZE PUNCH SET – DK. MARI. (BOWL AND BASE ARE ABSOLUTELY BEAUTIFUL; CUPS ARE AVERAGE)**
- ____ 33A. **N G & C LG. ICE CREAM BOWL W/ BASKETWEAVE EXT. – ICE BLUE (VERY RARE AND DESIRABLE; HAS MANUF. OPEN BUBBLE ON BASE)**
- ____ 34. N G & C Covered Powder Jar – Purp. (very scarce; perfect w/ nice irid.)
- ____ 35. **N ACORN BURR 7 PC. WATER SET – PURP. (RARE AND DESIRABLE; REALLY NICE COLOR AND IRID.)**
- ____ 35A. N Acorn Burr Punch Base Only – Lt. Ice Blue (rare part w/ nice irid.)
- ____ 35B. N Acorn Burr 2 Handled Spooner – Dk. Mari. (great color and irid.)
- ____ 36. N Fine Cut and Roses Ftd. Candy Dish – Purp. (has super interior irid.)
- ____ 37. N Singing Bird Handled Mug – Purp. (nice color and irid.)
- ____ 38. N Memphis Handled Punch Cup – Purp. (nice irid.)
- ____ 39. N Oriental Poppy Tumbler – Dk. Mari. (super dark color and irid.)
- ____ 40. **N ORIENTAL POPPY 7 PC. TANKARD WATER SET – GREEN (RARE AND DESIRABLE SET; MANUF. FLAKE AT TOP OF HANDLE)**
- ____ 41. N Beaded Cable Ftd. Rose Bowl – Blue/ Elec. Blue (nice blue base color w/ blue highlights)
- ____ 42. N Daisy and Plume Stemmed Rose Bowl w/ Band – Mari. (dark, satiny finish)
- ____ 43. N Star Of David and Bows Domed 8 Ruffled Bowl – Green (scarce color; satiny irid.)
- ____ 44. 7" Tall N Diamond Point Swung Vase – Green (nice color w/ a nice shape; satiny)
- ____ 45. **N PEACOCK AT THE FOUNTAIN FTD. RUFFLED FRUIT BOWL – BLUE (RARE AND DESIRABLE ITEM; NICE DARK BLUE COLOR)**
- ____ 46. **N BLOSSOMTIME STEMMED 6 RUFFLED COMPOTE – GREEN (RARE PATTERN W/ A SATINY FINISH)**
- ____ 47. **N GOOD LUCK STIPPLED 8 RUFFLED BOWL W/ RIBBED BACK AND NARROW BASE – BLUE (RARE AND DESIRABLE; HAS A DARK MULTI-COLORED IRID.)**
- ____ 48. N Raspberry Tumbler – Dk. Mari. (really nice example)
- ____ 49. N Stretch Punch Bowl Shaped Ftd. Compote – Russet Green (scarce)
- ____ 50. **N CORN VASE W/ PLAIN BASE – WHITE (VERY SCARCE W/ AVERAGE COLOR AND IRID.)**
- ____ 51. **M'BURG LETTERED COURTHOUSE I.C. SHAPED BOWL – AMYTH. (VERY RARE AND VERY DESIRABLE; RADIUM AND ROUND; NICE COMBINATION)**
- ____ 52. 9" M'burg Rays and Ribbons Deep Round Flared Bowl – Amyth. (super radium irid. w/ bright blues and reds)
- ____ 53. M'burg Boutonniere Stemmed 6 Ruffled Compote – Amyth. (scarce and has a nice satiny finish; chip on base)
- ____ 54. M'burg Holly Sprig Tri-Cornered Nappy – Amyth. (super radium example; great irid.)
- ____ 54A. M'burg Holly Sprig Deep Oval Handled Bon Bon – Amyth. (radium; nice color and irid.)
- ____ 55. **M'BURG FEATHER AND HEART 7 PC. WATER SET – AMYTH. (EXTREMELY RARE SET TO FIND; SATINY AND NICE)**
- ____ 56. **9-1/2-10" M'BURG FLEUR DE LIS LG. 6 RUFFLED BOWL – AMYTH. (RADIUM AND VERY DESIRABLE; A REALLY NICE EXAMPLE)**
- ____ 57. 9-1/2-10" M'burg Peacock Lg. 6 Ruffled Bowl – Amyth. (radium and nice; has no bee and no beading)
- ____ 58. 8-1/2" M'burg Grape Wreath Variant 6 Ruffled Bowl – Green (radium and a beaut! super finish)
- ____ 59. **CAMBRIDGE DOUBLE STAR HANDLED WATER PITCHER – PURP. (EXTREMELY RARE COLOR FOR THIS ITEM; HAS A CRACK IN THE HANDLE)**
- ____ 60. **9" IMPERIAL OPEN ROSE FLAT PLATE – AMBER (SUPER EXAMPLE W/ BRIGHT BLUE AND RED IRID.)**
- ____ 61. **IMPERIAL PANSY FLAT OVAL DRESSER TRAY – AMBER (RARE ITEM IN A RARE COLOR; HAS A GOLDISH IRID.)**
- ____ 62. Imperial Pansy Breakfast Open Sugar – Amber (super example w/ great irid.)
- ____ 63. Imperial Robin Tumbler – Dk. Mari. (scarce item; dark color)
- ____ 64. Imperial Crab Claw Tumbler – Dk. Mari. (dark color w/ great irid.)
- ____ 65. **IMPERIAL GRAPE STEMMED GOBLET – PURP. (VERY SCARCE ITEM W/ BLUE AND RED IRID.)**
- ____ 66. Imperial Grape Handled Flower Basket – Clamb. (scarce w/ very nice irid.)
- ____ 67. 9" Imperial Open Rose Flat Plate – Dk. Mari. (dark color for this item)
- ____ 68. 11-12" Imperial Bullseye and Beads Swung Vase – Mari. (nice irid.)
- ____ 69. 9-9-1/2" Imperial Miniature Morning Glory Swung Vase – Smoke (a very, very tall example of this item)
- ____ 70. Imperial Octagon Standard Size 6 Pc. Water Set – Dk. Mari. (nice well matched set; dark color)
- ____ 71. 8-1/2" Imperial Heavy Grape Flat Plate – Green (has a goldish/ silvery irid.)
- ____ 72. Imperial (?) Brocaded Daffodils Heart Shaped Handled Nappy – Pink (very attractive item; handle in a heart shape)
- ____ 73. Imperial Star and File Handled Water Pitcher – Mari. (scarce item w/ dark color)
- ____ 74. Imperial Flute Toothpick Holder – Dk. Mari. (dark color; has wear on high spots)
- ____ 75. **10-10-1/2" AUSTRALIAN KANGAROO LG. 16 RUFFLED BOWL – DK. MARI. (RARE AND DESIRABLE ITEM; GREAT COLOR AND IRID.)**
- ____ 76. Sowerby Pineapple Rose Bowl – Dk. Mari. (really nice dark example)
- ____ 77. 6-1/2" Dugan Ski Star 8 Ruffled Sauce w/ Compass Ext. – P. Opal. (nice opal and satiny irid.)
- ____ 78. Dugan Dahlia Ind. Ftd. Round Berry Bowl – Purp. (scarce item w/ average irid.)
- ____ 79. Dugan S Repeat Handled Punch Cup – Purp. (scarce w/ nice satiny irid.)
- ____ 80. **DUGAN HEAVY IRIS 7 PC. TANKARD WATER SET – PURP. (RARE AND VERY DESIRABLE; BRIGHT SATINY IRID.; NICE; HAS ONE DAMAGED TUMBLER)**
- ____ 81. **DUGAN HEAVY IRIS TANKARD WATER PITCHER – MARI. (PRETTY DARK FOR THIS PATTERN; VERY SCARCE)**
- ____ 82. 8-1/2-9" Dugan Round I.C. Shaped Bowl/ Plate – White (super irid. and very frosty; nice item)
- ____ 83. 6-3/4" Dugan Persian Garden Plate w/ Basketweave Ext. – Dk. Mari. (dark satiny example; nice)
- ____ 84. **DUGAN HERON HANDLED MUG – PURP. (RARE AND DESIRABLE; NICE COLOR AND DETAIL)**
- ____ 85. **DUGAN STORK IN THE RUSHES (BEADED MOLD) 7 PC. WATER SET – LIME GREEN/ MARI. PITCHER AND 6 MARI. TUMBLERS (RARE PITCHER BASE COLOR; ONLY SEEN TWO EXAMPLES)**
- ____ 86. 8-1/2-9" Dugan Double Stem Rose Domed I.C. Shaped Bowl – Blue (very rare base color w/ a nice satiny irid.)
- ____ 87. Westmoreland ABC/ Stork Cereal Bowl – Mari. (average irid.)
- ____ 88. Westmoreland Strutting Peacocks Covered Breakfast Sugar and Creamer – Amyth. (scarce w/ average irid.)
- ____ 89. U.S. Glass 1911 Rochester N.Y. Shriners Champagne Glass – Clear (scarce; nice decoration)

- _____ 90. **U.S. GLASS PALM BEACH 6 PC. BERRY SET – WHITE (VERY RARE SET; HAS GOOSEBERRY INT.; W/ SUPER IRID. AND FROSTY)**
- _____ 91. **5" U.S. GLASS PALM BEACH TURNED IN ROSE BOWL W/ GOOSEBERRY INT. AND SILVER TRIM – WHITE (VERY RARE ITEM; HAS SUPER SILVER TRIM; NICE)**
- _____ 92. Fenton Enameled Magnolia Decorated Tumbler – Mari. (nice decoration)
- _____ 93. Fenton Orange Tree Scroll Tumbler – Dk. Mari. (nice color and irid.)
- _____ 94. Fenton Butterfly and Fern Tumbler w/ Manuf. Ground Base – Dk. Mari. (nice dark color)
- _____ 95. **FENTON BUTTERFLY AND BERRY TUMBLER – AMYTH. (RARE AND DESIRABLE BASE COLOR W/ GREAT IRID.)**
- _____ 96. 8-1/2" Fenton Peacock and Grape I.C. Shaped Bowl – Green (scarce; nice even irid.)
- _____ 97. Fenton Blackberry Spray 6 Ruffled Hat – Blue (really nice example; nice)
- _____ 98. **FENTON KITTENS 4 RUFFLED TOOTHPICK HOLDER – MARI. (SCARCE W/ NICE COLOR AND DETAIL)**
- _____ 99. 6" Fenton Peacock Tail Tri-Cornered Bowl – Amyth. (really nice example w/ nice irid.)
- _____ 100. **10-10-1/2" FENTON LITTLE FLOWERS CHOP PLATE – MARI. (VERY RARE ITEM; IT'S BEEN A WHILE; AVERAGE IRID.)**
- _____ 101. 9-1/2" Fenton Orange Tree Flared Plate – Blue (very scarce; has an unusual satiny irid.)
- _____ 102. 9-1/2" Fenton Persian Medallion Flat Plate – Blue (scarce; has a silvery irid.)
- _____ 103. **6" FENTON PERSIAN MEDALLION FLAT PLATE – BLUE (RARE W/ GREAT MULTI-COLORED IRID.)**
- _____ 104. 6" Fenton Cherry Chain Flared Plate – Blue (scarce item w/ a satiny finish)
- _____ 105. **6" FENTON VINTAGE GRAPE FLAT PLATE – MARI. (RARE ITEM IN THIS SIZE; HAS A LIGHTER IRID.)**
- _____ 106. Fenton Horsehead Medallion Ftd. Rose Bowl – Mari. (scarce w/ nice average irid.)
- _____ 107. **FENTON PERSIAN MEDALLION 4 SIDED 2 HANDLED BON BON – AQUA/ MARI. (RARE AND DESIRABLE BASE COLOR FOR THIS ITEM; A TOUGHIE)**
- _____ 108. **FENTON BUTTERFLIES 4 SIDED 2 HANDLED BON BON W/ HORLACHER ADV. – AMYTH. (VERY SCARCE AND DESIRABLE; SATINY)**
- _____ 109. Fenton Pond Lily 4 Sided 2 Handled Bon Bon – Blue (sorta scarce color and pattern)
- _____ 110. **FENTON paneled DANDELION 7 PC. TANKARD WATER SET – GREEN (RARE SET W/ AN AVERAGE WELL MATCHED IRID.)**
- _____ 111. **FENTON PRISM BAND/ FORGET-ME-NOT DECORATED TANKARD WATER PITCHER – DK. MARI. (A SUPER EXAMPLE; GREAT COLOR AND DECORATION)**
- _____ 112. Fenton Stretch Double Dolphin 4 Sided Stemmed Compote – Velva Rose (very scarce and very desirable; nice color)
- _____ 113. 10-11" Fenton Diamond Point Columns Standard Swung Vase – Green (scarce base color)
- _____ 114. **FENTON RIBBED FTD. J.I.P. JESTERS CAP VASE – POWDER BLUE/ MARI. (NOT SURE OF PATTERN BUT AM SURE I'VE NEVER SEEN ANOTHER IN THIS COLOR)**
- _____ 115. **10-1/2-11" FENTON FANTAIL LG. FTD. 6 RUFFLED BOWL – DK. MARI. (ABSOLUTELY SUPER ITEM W/ PINKS AND BLUES)**
- _____ 116. 9-1/2" Fenton "1911 Birmingham Age Herald – Carriers Greetings" 6 Ruffled Bowl – Amyth. (very rare and desirable; has a chip on the edge at about 4 o'clock)
- _____ 117. **FENTON ORANGE TREE STANDARD FLARED HANDLED MUG – RED (RARE AND VERY DESIRABLE; GREAT RED W/ NICE IRID.)**
- _____ 118. Book 4th Edition-Standard Encyclopedia of Carnival Glass (by Edwards)
- _____ 119. Dugan Four Flowers 5 Pc. Ruffled Berry Set w/ Plain Ext. – P. Opal. (scarce set; master has light irid. in center)
- _____ 120. **8-9" TALL FENTON FINE RIB STANDARD SWUNG VASE – MARI/ MOONSTONE (EXTREMELY RARE COLOR FOR THIS ITEM; REALLY NICE EXAMPLE)**
- _____ 121. 9-1/2-10" Fenton Lotus and Poinsettia Lg. I.C. Shaped Ball Ftd. Bowl – Green (rare color for this item; satiny multi-colored irid.)
- _____ 122. **9-9-1/2" IMPERIAL GRAPE 8 RUFFLED BOWL – MARI. W/ OPAL. BASE (EXTREMELY RARE VARIATION OF THIS PATTERN; OPAL RING IN BASE)**
- _____ 123. **12" TALL N FOUR PILLAR SWUNG VASE – POWDER BLUE OPAL. (RARE BASE COLOR FOR THIS ITEM; MORE BLUE THAN AQUA; RARE COLOR)**
- _____ 124. 11" Tall N Four Pillar Swung Vase – Aqua Opal. (very scarce w/ great opal.; small chip on foot)
- _____ 124A. **8-1/4" TALL N DRAPERY SWUNG VASE – SAPPHIRE MARI. (RARE COLOR AND PERFECT; DARK BASE COLOR)**
- _____ 124B. **9-3/4" TALL N TREE TRUNK STANDARD SWUNG VASE – BLUE (RARE AND DESIRABLE; BLUE AND GOLD HIGHLIGHTS)**
- _____ 125. **N HEARTS AND FLOWERS FLAT PLATE W/ RIBBED EXT. – PURP. (RARE AND VERY DESIRABLE; HAS TO BE ONE OF THE BETTER EXAMPLES I'VE SEEN)**
- _____ 126. **N HEARTS AND FLOWERS BOWL W/ P.C.E. AND RIBBED EXT. – ICE BLUE (RARE SHAPE AND VERY DESIRABLE; NICE BASE COLOR AND IRID.)**
- _____ 127. **N HEARTS AND FLOWERS STEMMED RUFFLED COMPOTE W/ RIBBED EXT. – AQUA OPAL. (RARE AND DESIRABLE; HAS A NICE BUTTERSCOTCH OVERLAY; NICE EXAMPLE)**
- _____ 127A. **N HEART AND FLOWERS STEMMED 6 RUFFLED COMPOTE W/ RIBBED EXT. – AQUA OPAL. (RARE AND DESIRABLE; SLIGHT MARI. OVERLAY; NICE)**
- _____ 128. N Hearts and Flowers Stemmed Ruffled Compote w/ Ribbed Ext. – White (scarce; nice frosty irid. and color)
- _____ 129. **N HEARTS AND FLOWERS STEMMED RUFFLED COMPOTE W/ RIBBED EXT. – ELEC. BLUE (SUPER EXAMPLE; AN ATTRACTIVE ITEM W/ BRIGHT BLUE IRID.)**
- _____ 130. **N HEARTS AND FLOWERS STEMMED RUFFLED COMPOTE W/ RIBBED EXT. – DK. MARI. (SUPER EXAMPLE; NICE DARK COLOR W/ GREAT IRID.)**
- _____ 131. **N PEACOCK AT THE FOUNTAIN TABLE SET CREAMER ONLY – ELEC. BLUE (RARE AND DESIRABLE PART TO A RARE SET W/ GREAT COLOR)**
- _____ 132. N Peacock At The Fountain Ftd. Ruffled Fruit Bowl – Green (very rare but has one flange missing; a really nice shelf piece)
- _____ 133. N Springtime Table Set Creamer Only – Purp. (very scarce part to find; has gold highlights)
- _____ 134. **N DANDELION HANDLED MUG – BLUE (RARE COLOR FOR THIS ITEM; IRID. HAS GOLD HIGHLIGHTS)**
- _____ 135. **N ROUND HANDLED BUSHEL BASKET – AQUA OPAL. (RARE AND DESIRABLE; NICE PASTEL EXAMPLE W/ OPAL. HANDLES AND RIM)**
- _____ 136. N Round Handled Bushel Basket – Ice Green (very scarce color; nice example w/ bright irid.)
- _____ 137. **N ROUND HANDLED BUSHEL BASKET – GREEN (RARE BASE COLOR W/ GOLDISH HIGHLIGHTS)**
- _____ 138. **N ROUND HANDLED BUSHEL BASKET – HOREHOUND (RARE BASE COLOR W/ EXCELLENT IRID.)**
- _____ 139. N Round Handled Bushel Basket – Blue (scarce; nice color and irid.)
- _____ 140. N Round Handled Bushel Basket – Amyth. (scarce; sorta violet but nice anyway!)
- _____ 141. N Round Handled Bushel Basket – Purp. (nice dark color w/ silvery/ gold irid.)
- _____ 142. N Round Handled Bushel Basket – Mari. (dark color w/ average irid.)
- _____ 143. N Eight Sided Handled Bushel Basket – Dk. Mari. (dark color w/ average irid.)
- _____ 144. N Eight Sided Handled Bushel Basket – White (scarce item; nice and frosty)
- _____ 145. **N DOUBLE LOOP CHALICE OR OPEN SUGAR – AQUA OPAL. (VERY SCARCE PASTEL ITEM W/ NICE IRID.)**
- _____ 146. **N DOUBLE LOOP CHALICE OR OPEN SUGAR – GREEN (RARE COLOR FOR THIS ITEM; GREAT IRID.)**
- _____ 147. N Double Loop Chalice Or Open Sugar – Purp. (another rare base color for this pattern; nice irid.)

- _____ 148. N Double Loop Chalice Or Open Sugar – Blue (scarce item w/ nice blue highlights)
- _____ 149. N Raspberry Ftd. Occasional Gravy Boat – Purp. (scarce color w/ nice irid.)
- _____ 150. N Raspberry 7 pc. Water Set – Purp. (very scarce and desirable set; nice irid.)
- _____ 151. N Raspberry Handled Milk Pitcher – Mari. (scarce color w/ nice irid.)
- _____ **152. N BLACKBERRY AND RAYS STEMMED 6 RUFFLED COMPOTE – MARI. (RARE PATTERN W/ A SATINY FINISH)**
- _____ 153. N Blossomtime Stemmed 6 Ruffled Compote – Amyth. (rare pattern w/ nice multi-colored irid.)
- _____ 154. N Daisy and Plume/ Fern Int. Stemmed 6 Ruffled Compote – Amyth. (very scarce; has nice irid.)
- _____ 155. N G & C Ftd. Hatpin Holder – Purp. (very scarce; nice color and irid.)
- _____ 156. (2) N G & C Cologne Bottles and Stoppers – Purp. (really nice examples; selling choice)
- _____ 157. N G & C Covered Powder Jar – Purp. (very scarce; nice color and irid.)
- _____ 158. N G & C Large Dresser Tray – Purp. (super example; great color and irid.)
- _____ 159. N G & C Small Pin Tray – Purp. (very scarce; has satiny finish)
- _____ 160. (2) N G & C Candlesticks – Purp. (scarce; selling so much each for pair)
- _____ **160A. N G & C HANDLED COVERED CRACKER JAR – PURP. (RARE W/ EXCELLENT COLOR AND IRID.)**
- _____ 161. 9" N G & C Variant Flat Plate w/ Basketweave Ext. – Purp. (scarce; nice color and irid.; has a stippled style mold)
- _____ **161A. N G & C VARIANT STIPPLED BOWL W/ P.C.E. AND RIBBED EXT. – BLUE/ ELEC. BLUE (RARE AND DESIRABLE; NICE COLOR; PINHEAD ON EDGE)**
- _____ 162. 7-1/2" N G & C Flat Plate w/ Basketweave Ext. – Purp. (really nice color and irid. for this item)
- _____ 162A. N G & C Stippled 8 Ruffled Bowl w/ Ribbed Ext. – Ice Green (rare and nice but has 2 points chipped)
- _____ 163. N Grape Arbor 5 Pc. Tankard Water Set – Mari. (scarce set; nice irid and well matched)
- _____ 164. N Daisy and Plume 3 Ftd. Rose Bowl w/ Berry Int. – Purp. (really nice example for this pattern)
- _____ **165. N BEADED CABLE FTD. ROSE BOWL – AQUA (VERY DESIRABLE ITEM; NICE ITEM W/ LIGHT BUTTERSCOTCH OVERLAY)**
- _____ 165A. N Beaded Cable Ftd. Rose Bowl – Blue (scarce; w/ gold highlights)
- _____ 166. N Wide Panel Stretch Ind. Salt or Nut Cup – Celeste Blue (scarce item w/ great color and irid.)
- _____ 167. N Wishbone Ftd. 8 Ruffled Bowl w/ Ruffles and Rings Ext. – Purp. (nice example w/ a satiny finish)
- _____ 168. N Rosette 8 Ruffled Bowl w/ Ruffles and Rings Ext. – Amyth. (odd base color; really nice irid.)
- _____ 169. N Strawberry Plate w/ Basketweave Ext. – Amyth. (scarce item w/ a multi-colored satiny finish)
- _____ **170. N NIPPON 8 RUFFLED BOWL W/ BASKETWEAVE EXT. – GREEN (RARE AND REALLY NICE; HAS A BRONZE OVERLAY)**
- _____ 171. N Good Luck 8 Ruffled Bowl w/ Basketweave Ext. – Purp. (very scarce and desirable; nice even irid.)
- _____ 172. N Peacocks 8 Ruffled Bowl w/ Ribbed Ext. – Purp. (very scarce and desirable; nice irid.)
- _____ **173. N PEACOCK AT THE URN 7 PC. ICE CREAM SET – PURP. (VERY SCARCE SET; AVERAGE MULTI-COLORED IRID.)**
- _____ **174. 10-1/2" M'BURG PEACOCK AT THE URN LG. 6 RUFFLED BOWL – AMYTH. (RADIUM AND RARE; A SUPER EXAMPLE; NICE)**
- _____ **175. 9-9-1/2" M'BURG MANY STARS I.C. SHAPED BOWL W/ 5 POINTED STAR – AMYTH. (RARE AND VERY DESIRABLE; HAS SUPER RADIUM IRID.)**
- _____ 176. 10-10-1/2" M'burg Hanging Cherries Lg. I.C. Bowl – Amyth. (satiny and scarce; nice irid.)
- _____ 177. 7-7-1/2" M'burg Hanging Cherries I.C. Shaped Bowl – Green (satiny example; fruit and leaves painted at the factory)
- _____ **178. M'BURG FEATHER AND HEART 5 PC. WATER SET – MARI. (VERY SCARCE SET; NICE AND WELL MATCHED)**
- _____ 179. M'burg Diamonds 7 Pc. Water Set – Green (excellent color and irid.; well matched)
- _____ **180. M'BURG POPPY I.C. SHAPED STEMMED COMPOTE – GREEN (EXTREMELY RARE SHAPE W/ A GREAT RADIUM FINISH; A SUPER EXAMPLE)**
- _____ **181. M'BURG LEAF AND LITTLE FLOWERS ROUND FLARED MINIATURE COMPOTE – AMYTH. (RADIUM AND VERY SCARCE; HAS GOLDISH HIGHLIGHTS)**
- _____ 182. M'burg Boutonniere Stemmed 6 Ruffled Compote – Amyth. (scarce, satiny example)
- _____ 183. 8-1/2" M'burg Grape Wreath Variant 6 Ruffled Bowl – Amyth. (radium w/ blue and red highlights)
- _____ 184. 8-3/4" M'burg Strawberry Wreath Variant 6 Ruffled Crimped Edge Bowl – Green (radium and nice; sorta odd shaped)
- _____ 185. 7-1/2" M'burg Little Stars 6 Ruffled Bowl – Green (scarce; nice satiny example)
- _____ 186. M'burg Holly Sprig Tri-Cornered Handled Nappy – Amyth. (radium w/ gold highlights)
- _____ 187. 10-1/4" M'burg Peacock At The Urn Lg. 6 Ruffled Bowl – Amyth. (satiny and scarce w/ a multi-colored irid.)
- _____ 188. M'burg Swirl Hobnail Rose Bowl – Purp. (scarce w/ nice multi-colored irid.)
- _____ 189. Cambridge Inverted Feather Handled Covered Cracker Jar – Green (very scarce and desirable; nice irid.)
- _____ **190. CAMBRIDGE INVERTED FEATHER HANDLED CREAMER – MARI. (QUITE A RARE ITEM; TOUGH TO FIND)**
- _____ 191. Cambridge Inverted Feather Stemmed 6 Ruffled Parfait – Dk. Mari. (nice dark color and irid.)
- _____ **192. CAMBRIDGE INVERTED STRAWBERRY LG. ROSE BOWL SHAPED MASTER BERRY BOWL – DK. MARI. (RARE SHAPE AND A BEAUT.; NICE AND DARK)**
- _____ 193. Pr. 7" Tall x 3-3/4" Square Base Fostoria American Candlesticks – Lt. Mari. (rare pair; light in color but tough)
- _____ 194. Pr. Fostoria American Small Breakfast Open Sugar and Creamer – Dk. Mari. (very scarce set; dark w/ great irid.)
- _____ **195. 3-1/2" TALL FOSTORIA BROCADED ACORNS HANDLED SUGAR PAIL – LAVENDER (RARE ITEM IN THIS COLOR; A TOUGHIE)**
- _____ 196. 6" Tall Brocaded Acorn Covered Candy Dish or Sweetmeat – Ice Blue (another rare item; nice color and gold trim)
- _____ 197. 6" Tall x 7-1/2" Wide Fostoria Brocaded Summer Gardens Stemmed Compote – White (scarce item w/ twisted stem and great irid.)
- _____ 198. 6" Tall x 7-1/2" Wide Fostoria Plain Compote w/ Twisted Stem – Purp. (rare item w/ super taffeta irid.)
- _____ 199. 2-1/2" Tall x 6" Wide Imperial (?) Brocaded Daffodils 8 Sided Compote – Ice Green (scarce item w/ great color and irid.)
- _____ 200. Pr. 3" Tall x 4-1/2" Base Fostoria Brocaded Palms Squatty Candlesticks – Pink (rare pair of sticks esp. in this color)
- _____ 201. 7-1/2" Fostoria Brocaded Palms 2 Handled Bon Bon – Pink (nice color and irid.)
- _____ 202. 8-1/2" Fostoria Brocaded Acorns 2 Handled Flat Plate – Ice Blue (nice color and irid.)
- _____ 203. 4" Tall x 4" Base Heisey Covered Dresser Jar – Lt. Mari. (unusual item; signed w/ nice irid.)
- _____ 204. Pr. 7" tall U.S. Glass Stretch Bell Shaped Candlesticks – Purp. (scarce pair; nice; could be Vineland)
- _____ 205. Imperial Tiger Lily 7 Pc. Water Set – Green (very scarce set w/ really nice irid.)
- _____ 206. 6-1/4" Tall Imperial Miniature Morning Glory Swung Vase – Green (scarce color; nice)
- _____ **207. IMPERIAL 474 HANDLED MILK PITCHER – GREEN (VERY SCARCE ITEM; HAS A LIME GREEN TINT)**
- _____ 208. Imperial Beaded Acanthus Handled Milk Pitcher – Mari. (very scarce pattern w/ pretty nice color)
- _____ 209. 2-1/2" Tall x 8" Wide Imperial Plain 8 Ruffled Bowl Signed w/ Iron Cross – Clear (odd item; pretty plain w/ great irid.)
- _____ 210. Imperial Rococo Ruffled Top Vase – Dk. Smoke (super dark example; best I've seen; may have the tiniest of a pinhead)
- _____ 211. Imperial Octagon Stemmed Deep Round Compote – Dk. Mari. (scarce item; dark color, irid. and perfect)

- _____ 212. 4-1/2" Tall x 6-1/2" Wide Imperial 474 Stemmed 8 Ruffled Compote – Mari. (quite a rare shape for this pattern)
- _____ **213. IMPERIAL "COLONIAL" HANDLED CRUET AND TALL POINTED STOPPER – DK. MARI. (RARE ITEM W/ DARK COLOR AND IRID.; NICE)**
- _____ 214. Imperial Interior Ribbed Ftd. 8 Ruffled Turned In Rose Bowl – Mari. (from Presnick collection; candy jar base whimsey)
- _____ 215. 2-1/4" Tall x 3-3/4" Wide Imperial Optic 2 Handled Open Salt Signed w/ Iron Cross – Mari. (rare and very desirable miniature; a great item)
- _____ 215A. 7-3/4" Imperial Jewels I.C. Shaped Bowl Signed w/ Iron Cross – Purp. (very scarce w/ great stretchy irid.)
- _____ 215B. 3" Tall x 7-1/8" Wide Imperial Interior Panels Squatty Vase Signed w/ Iron Cross – Mari. (scarce w/ great irid.)
- _____ 216. Imperial Grape Carafe – Purp. (very scarce w/ nice multi-colored irid.)
- _____ 217. Imperial Grape Carafe – Dk. Mari. (scarce in this color; really nice dark item)
- _____ 218. Imperial Grape Carafe Bottle (Whimsey) – Green (odd item; it's a wine bottle that doesn't want to be a carafe)
- _____ 218A. 6-1/2" Imperial Grape Deep Round Bowl – Purp. (great color and irid.; tiny chip on base)
- _____ 219. 5-3/4" Imperial Embossed Scroll Ind. Berry Bowl w/ File Ext. – Purp. (super bright irid.)
- _____ **220. 8-3/4" IMPERIAL FLORAL AND OPTIC EXTERIOR/ DOUBLE DUTCH INT. 3 FTD. FLARED BOWL – PURP. (RARE PATTERN IN THIS COLOR AND PERFECT W/ GREAT IRID.)**
- _____ 221. 9" Imperial Floral and Optic 3 Ftd. Turned Out Centerpiece Bowl – Smoke/ Milk Glass (a very rare item both in color and shape; tiny flakes on one foot)
- _____ **222. 9" IMPERIAL PANSY 8 RUFFLED BOWL – PURP. (HAS TO BE ONE OF THE BEST EXAMPLES I'VE SEEN)**
- _____ 223. 8" Imperial Shell and Sand Deep 8 Ruffled Bowl – Purp. (really nice item w/ bright yellow highlights)
- _____ 224. Imperial Waffle Block Handled Flower Basket – Teal (scarce color for this item; nice)
- _____ 225. 10" Tall Imperial Interior Wide Panel Handled Flower Basket w/ Weave Handle – Mari./ Milk Glass (rare item in this color; irid. light at the base)
- _____ 225A. 14" Tall Imperial Waffle Block and Hobstar Lg. Handled Flower Basket – Mari. (rare item w/ nice irid.)
- _____ 226. 10" Tall Imperial Stretch Plain Handled Flower Basket – Teal (rare and attractive color for this item)
- _____ 227. 10" Tall Imperial Stretch Plain Handled Flower Basket – Smoke (scarce w/ great color and irid.)
- _____ 228. 10" Tall Imperial Plain Handled Flower Basket – Lt. Smoke (scarce; doesn't have a stretch effect)
- _____ 229. 10" Tall Imperial Stretch Plain Handled Flower Basket – White (scarce; nice color and irid.)
- _____ **230. 5-1/4" TALL IMPERIAL COLONIAL FLUTE STRETCH TANKARD TUMBLER – RED (VERY RARE ITEM IN THIS COLOR; REALLY NICE)**
- _____ 231. 13-1/2" Tall U.S. Glass (or Heisey?) Wide Panel Lg. Handled Flower Basket – Mari. (really large item w/ the Heisey style look)
- _____ 232. 9" Westmoreland Carolina Dogwood 6 Ruffled Bowl – Blue Opal. (very scarce; nice opal. w/ a satiny finish)
- _____ 233. 8-1/2" Westmoreland Carolina Dogwood 6 Ruffled Bowl – Mari./ Opaque (scarce base color w/ a satiny finish)
- _____ 234. 8-1/2" Westmoreland Carolina Dogwood 6 Ruffled Bowl – Lt. P. Opal. (scarce; lighter irid. and average opal.)
- _____ **235. WESTMORELAND DAISY SQUARES STEMMED PINCH IN 2 SIDED CRIMPED COMPOTE – MARI. (RARE AND DESIRABLE; DARK COLOR IN A GREAT SHAPE)**
- _____ **236. 2-3/4" X 2-3/4" WESTMORELAND INTAGLIO FLOWER STEMMED ALMOND CUP – MARI. (RARE AND VERY DESIRABLE MINIATURE; AVERAGE COLOR)**
- _____ 237. 3-1/2" x 3-1/2" Westmoreland Intaglio Flower 4 Sided Miniature w/ Wire Handle – Lt. P. Opal. (cute miniature w/ wire handle and enameled souvenir)
- _____ 238. Westmoreland Pearly Dots Stemmed Low 6 Ruffled Compote – Mari./ Milk Glass. (scarce item; nice color and irid.)
- _____ 239. Westmoreland File and Fan Ftd. 6 Ruffled Compote – Blue w/ Lt. Opal. (scarce item; fair opal. and nice base color)
- _____ **240. EUROPEAN CURVED STAR CHALICE – BLUE (RARE COLOR FOR THIS ITEM; HAVEN'T SOLD ONE OF THESE IN A WHILE)**
- _____ 241. European Curved Star Chalice – Dk. Mari. (dark example and very scarce)
- _____ 242. European Milady Covered Powder Jar – Mari. (scarce novelty item)
- _____ 243. Sowerby Covered Hen Butter Dish – Blue (scarce color for this item)
- _____ 244. 9-1/2" Australian Magpie 12 Ruffled Bowl – Mari. (very scarce and desirable; nice color)
- _____ 245. 6-1/2" Tall x 8-1/2" Wide Australian Butterfly and Walrath Turned in Compote – Purp. (rare item in an unusual shape; nice)
- _____ **246. 9-1/2" AUSTRALIAN KANGAROO 16 RUFFLED BOWL – PURP. (RARE AND DESIRABLE; NICE COLOR AND DETAIL)**
- _____ **247. 9" AUSTRALIAN NESTING SWAN 16 RUFFLED BOWL – PURP. (ANOTHER RARE AND DESIRABLE ITEM; NICE)**
- _____ 248. 9-1/2" Australian Magpie 12 Ruffled Bowl – Purp. (very scarce w/ nice color and irid.)
- _____ 249. 10" Australian Magpie 12 Ruffled Bowl – Mari. (very scarce w/ nice color and detail)
- _____ 250. Pair (Maker?) Benzer Stretch Car Vases w/ Brackets – Ice Green (rare pair complete w/ brackets; really nice)
- _____ 251. 7-1/2" Tall Dugan (?) Stretch Wide Panel Handled Flower Basket – Ice Green (very scarce and very desirable; attractive)
- _____ 252. 5-1/2" Tall Dugan Stork in the Rushes Handled Basket – Mari. (scarce shape for this pattern; nice)
- _____ 253. 6-1/2" Tall Dugan Lattice Band Handled Flower Basket – Amyth. (another scarce shape for this pattern; nice)
- _____ **254. 10-1/2" DUGAN RUFFLED RIB LG. 8 RUFFLED CRIMPED EDGE BRIDE'S BOWL IN SILVER PLATE FRAME – P. OPAL. (RARE AND VERY DESIRABLE; GREAT COLOR, OPAL. AND SHAPE)**
- _____ **255. DUGAN HANDLED BEADED BASKET – ROUND/ FLARED – PURP. (VERY SCARCE AND DESIRABLE W/ GREAT MULTI-COLORED IRID.)**
- _____ 256. Dugan Handled Round Flared Beaded Basket – White (very scarce old example; great color and irid.)
- _____ **257. DUGAN HANDLED 2 SIDED BEADED BASKET – AQUA/ SAPPHIRE (RARE BASE COLOR; A VERY ATTRACTIVE ITEM)**
- _____ 258. Dugan Constellation Stemmed 6 Ruffled Compote – White (scarce; really frosty w/ nice irid.)
- _____ 259. Dugan Constellation Stemmed 6 Ruffled Compote – Mari. (scarce color for this item; salt burns in center)
- _____ **260. DUGAN FORMAL HATPIN HOLDER – PURP. (RARE AND VERY DESIRABLE; GOLD HIGHLIGHTS)**
- _____ **260A. 4-3/4" TALL X 6-1/4" WIDE DUGAN PULLED LOOP SQUATTY SWUNG VASE – PURP. (VERY RARE SIZE AND SHAPE; SATINY IRID.; TINY NICK ON EDGE)**
- _____ 261. 6-3/4" Tall Dugan (?) Eben 6 Ruffled Vase – Purp. (really weird item w/ a stretch effect)
- _____ 262. Dugan Mary Ann 2 Handled Vase – Amyth. (scarce; base color a bit lighter; nice)
- _____ **263. 2" TALL X 5-1/4" DUGAN AMARYLLIS FTD. FLARED PLATE – MARI. (RARE ITEM W/ NICE AVERAGE COLOR AND IRID.)**
- _____ 264. 5-1/2" Dugan Question Mark Stemmed I.C. Shaped Compote – White (scarce item; frosty w/ great color and irid.)
- _____ **265. 7" DUGAN FIVE HEARTS DOMED I.C. SHAPED BOWL – MARI. (RARE PATTERN W/ A NICE SATINY FINISH)**
- _____ 266. Dugan Holly Whirl Tri-Cornered Handled Gravy Boat – Purp. (a super example w/ great irid.; really nice)
- _____ 267. Dugan Honeycomb Rose Bowl – P. Opal. (scarce w/ nice dark irid.)
- _____ 268. 6-1/2" Dugan Fishscale and Beads 8 Ruffled Bowl – Aqua/ Mari. (rare base color for this item)
- _____ 269. Dugan Dahlia Ftd. Spooner – Dk. Mari. (super example if ya need it; nice)
- _____ 270. 8-3/4" Dugan Apple Blossom Twigs I.C. Shaped Bowl/ Plate – Purp. (very scarce w/ nice multi-colored irid.)
- _____ 271. 9-1/2" Dugan Fanciful Low Ruffled Bowl/ Plate – P. Opal. (scarce w/ nice mari. overlay and opal. on edge)

- _____ 272. 8-1/2" Dugan Fanciful I.C. Shaped Bowl/ Plate – White (scarce; frosty w/ great irid.)
- _____ 273. 9-1/4" Dugan Fanciful Bowl w/ 3 in 1 Edge – White (scarce shape; really frosty and nice)
- _____ 274. 6-1/2" Dugan Persian Garden Flat Plate w/ Basketweave Ext. – White (scarce; flat w/ great irid.)
- _____ 275. **DUGAN STIPPLED PETALS DOMED RUFFLED 2 SIDED HANDLED BASKET – P. OPAL. (EXTREMELY RARE ITEM; PERFECT W/ NICE OPAL. AND OVERLAY)**
- _____ 276. **DUGAN CAROLINE 2 SIDED HANDLED BASKET – P. OPAL. (VERY SCARCE; NICE OPAL.; GETTING TOUGH)**
- _____ 277. **DUGAN RIBBED INTERIOR/ JEWEL HEART EXTERIOR HANDLED BASKET – P. OPAL. (RARE ITEM IN A GREAT SIZE; NICE)**
- _____ 278. **U.S. GLASS PEACOCK LAMP – RED (RARE AND VERY DESIRABLE; EXCELLENT EXAMPLE W/ GREAT COLOR)**
- _____ 279. Fenton Horsehead Medallion Ftd. Nut Bowl – Blue (nice dark example w/ strong satiny finish)
- _____ 280. **19-1/4" TALL X 5-1/4" BASE FENTON RUSTIC SWUNG FUNERAL VASE – GREEN (A BEAUTIFUL EXAMPLE W/ BRIGHT MULTI-COLORED IRID.)**
- _____ 281. Fenton Kittens Cup and Saucer – Dk. Mari. (a really dark example w/ nice detail and color)
- _____ 282. Fenton Large Size Two Row Open Edge 6 Ruffled Hat – Celeste Blue (rare item w/ nice color; manuf. ck. in body)
- _____ 283. Fenton Two Row Open Edge 6 Ruffled Hat – Mari./ Vaseline (scarce base color)
- _____ 284. Fenton Two Row 2 Sided Hat w/ Millers Furniture Advertising – Lt. Mari. (light in color; perfect)
- _____ 285. **8" FENTON DRAGON AND LOTUS DEEP I.C. SHAPED BOWL – RED (RARE ITEM W/ A SATINY FINISH AND THE SLIGHTEST OPAL. ON THE TIPS)**
- _____ 286. **8-8-1/4" FENTON DRAGON AND LOTUS DEEP I.C. SHAPED BOWL – AMBER OPAL. (VERY RARE COLOR FOR THIS ITEM HAS OBVIOUS OPAL. ON THE EDGE)**
- _____ 287. 8-1/4" Fenton Dragon and Lotus I.C. Shaped Bowl – Amyth. (scarce color; has a satiny finish)
- _____ 288. 8-1/4-8-1/2" Fenton Dragon and Lotus I.C. Shaped Bowl – Blue (actually quite a nice satiny example)
- _____ 289. 8-1/4" Fenton Holly Deep I.C. Shaped Bowl – Green (nice base color; satiny)
- _____ 290. **FENTON HOLLY 6 RUFFLED STEMMED COMPOTE – RED/ AMBERINA (RARE ITEM W/ A RED AMBERINA BASE COLOR)**
- _____ 291. Fenton Holly 6 Ruffled Stemmed Compote – Green (scarce base color w/ nice satiny irid.)
- _____ 292. Fenton Holly 6 Ruffled Stemmed Compote – Amyth. (scarce base color w/ nice satiny irid.)
- _____ 293. Fenton Holly 6 Ruffled Stemmed Compote – Blue (nice base color and irid.)
- _____ 294. Fenton Holly 6 Ruffled Stemmed Compote – Mari./ Lime Green (scarce base color w/ nice mari. overlay)
- _____ 295. Fenton Holly 6 Ruffled Stemmed Compote – Mari./ Pastel Blue (another scarce base color w/ nice mari. overlay)
- _____ 296. Fenton Peacock at the Urn 6 Ruffled Stemmed Compote – Aqua/ Mari. (scarce color for this item)
- _____ 297. Fenton Scotch Thistle 6 Ruffled Crimped Edge Stemmed Compote – Amyth. (scarce pattern in a scarce color)
- _____ 298. Fenton Captive Rose 6 Ruffled Crimped Edge Stemmed Compote – Blue (scarce pattern w/ really nice irid.)
- _____ 299. Fenton Persian Medallion Lg. Size 6 Ruffled Crimped Edge Compote – Blue (nice color and irid.)
- _____ 300. **9-1/4" FENTON HEART AND VINE FLAT PLATE – BLUE (VERY SCARCE ITEM; FLAT W/ EXCELLENT MULTI-COLORED IRID.)**
- _____ 301. 9-1/4" Fenton Captive Rose Flat Plate – Blue (scarce; flat example w/ silvery irid.)
- _____ 302. 9-1/2" Fenton Three Fruits Flat Plate – Amyth. (satiny example; has multi-colored irid.)
- _____ 303. 9-1/2" Fenton Holly Flared Plate – Mari. (nice color; has a manuf. check in body)
- _____ 304. 6-1/2" Fenton Cherry Chain Flat Plate – Mari. (scarce; nice satiny example)
- _____ 305. **6-1/4" FENTON "SEASON'S GREETINGS – EAT PARADISE SODA" FLAT PLATE – AMYTH. (RARE ITEM; ONE OF THE BETTER EXAMPLES I'VE SEEN)**
- _____ 306. 6-1/4" Fenton Sailboat Flared Plate – Mari. (very scarce; nice detail; irid. light in base)
- _____ 307. 6" Fenton Lotus and Poinsettia Ftd. 6 Ruffled Sauce – Aqua/ Mari. (scarce base color w/ a nice mari. overlay)
- _____ 308. Fenton Rose Spray Stemmed J.I.P. Compote – Celeste Blue (scarce pattern, shape and color)
- _____ 309. Fenton Rose Spray Stemmed J.I.P. Compote – White (scarce item in a nice shape)
- _____ 310. **FENTON DAISY CUT BELL – DK. MARI. (RARE ITEM; PERFECT W/ DARK COLOR AND IRID.)**
- _____ 311. **FENTON BUTTERFLY AND FERN 7 PC. BULBOUS WATER SET – BLUE (RARE SET; EXCELLENT COLOR, IRID. AND DETAIL)**
- _____ 312. Fenton Floral and Grape 7 Pc. Bulbous Water Set – Blue (very scarce set; pitcher is nice)
- _____ 313. Fenton Enameled Cherries 7 Pc. Bulbous Water Set – Blue (actually a nice example of this set)
- _____ 314. Fenton Waterlily and Cattail 4 Pc. Table Set – Dk. Mari. (very rare set to find complete; chips on butter base)
- _____ 315. **FENTON ORANGE TREE HANDLED LOVING CUP – AMYTH. (RARE BASE COLOR; HAS LIGHT SILVERY AND GOLD IRID.)**
- _____ 316. Fenton Flowers Ftd. Rose Bowl – Amyth. (scarce base color w/ average irid.)
- _____ 317. Fenton Orange Tree Covered Powder Jar – Blue (scarce; nice color and irid.)
- _____ 318. Fenton Orange Tree Lg. 3 Ftd. Ruffled Fruit Bowl – Blue (very scarce; a nice example w/ bright highlights)
- _____ 319. Fenton range Tree 12 Pc. Flared Punch Set – Mari. (nice set w/ a few extra cups)
- _____ 320. Fenton G & C Small Size 3 Ftd. Ruffled Fruit Bowl w/ Persian Medallion Int. – Amyth. (scarce item w/ excellent interior irid.)
- _____ 321. **10-1/4" FENTON CHRYSANTHEMUM 3 FTD. I.C. SHAPED BOWL – GREEN (RARE BASE COLOR FOR THIS PATTERN; TOUGH!)**
- _____ 322. **9-1/2" FENTON TEN MUMS BOWL W/ 3 IN 1 EDGE – GREEN (VERY SCARCE AND VERY DESIRABLE; NICE IRID.)**
- _____ 323. (2) Fenton Leaf Tiers Light Shades - Mari./ Moonstone (rare items; selling so much each for pair)
- _____ 324. Fenton Persian Medallion 2 Sided 2 Handled Card Tray - Mari./ Vaseline (scarce base color)
- _____ 325. Fenton Strawberry 2 Handled 4 Sided Bon Bon - Mari./ Vaseline (scarce base color)
- _____ 326. 6-1/2-7" Fenton Peacock and Dahlia Odd 6 Ruffled Bowl - Aqua/ Lt. Mari. (scarce base color w/ light irid.)
- _____ 327. Fenton Vintage Grape Small Size Single Lily Epergne - Blue (scarce; satiny)
- _____ 328. 3" Tall Fenton Waterlily and Cattails 6 Ruffled Toothpick Holder - Dk. Mari. (scarce w/ really nice dark color)
- _____ 329. Surprise
- _____ 330. Surprise

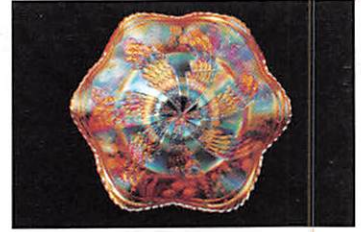
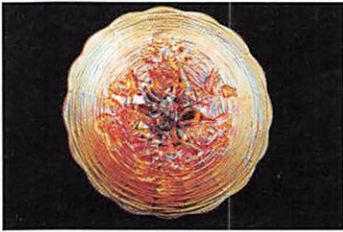
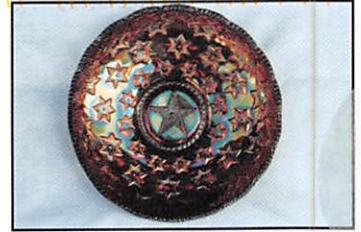
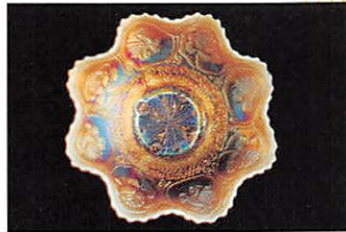
NOTES

FOR THE RESULTS OF THIS OR ANY BURNS AUCTION SERVICE AUCTION SEND A S.A.S.E. AND \$3.00 (INCLUDE NAME OR DATE OF AUCTION) TO:

EMMA TILTON
P.O. BOX 273
GNADENHUTTEN, OH 44629

VISIT US ON THE WEB!

<http://carnival.ksnews.com/burnsauktion>
for pictures, complete listings and upcoming auctions



BURNS

AUCTION SERVICE

P.O. BOX 608 • BATH, NEW YORK 14810

Tampa Bay Carnival Glass Club Convention Auction

Friday, February 9, 2001

Preview – 2:00 P.M. Auction – 4:00 P.M.

First Class Mail
U.S. Postage
PAID
Eugene, Oregon
Permit No. 305

