

BURNS

AUCTION SERVICE

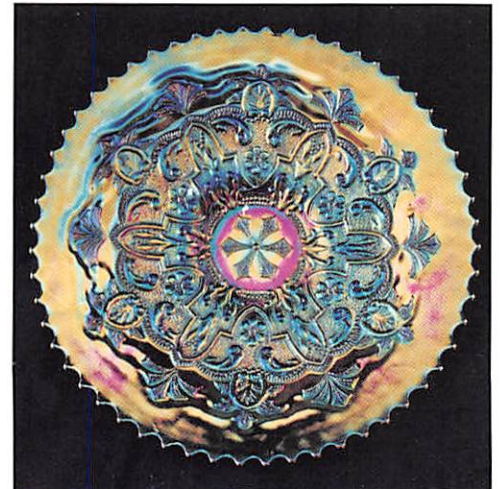
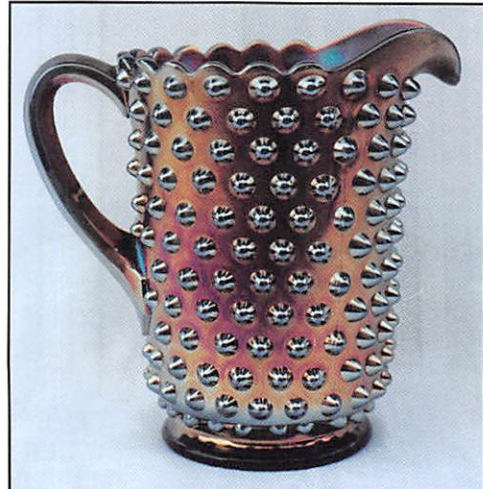
Sunshine State Carnival Glass Club Convention Auction Saturday February 3, 2001

Preview—Friday Evening and
8:00 A.M. Saturday
Auction—9:00 A.M. Saturday

at the
Holiday Inn – I-95
4900 Powerline Road
Ft. Lauderdale, Florida 33309
(954) 776-4880 or 1-800-873-6527

Use Exit 32, off I-95 (Commercial Boulevard), go one block west to corner of Commercial and Powerline, motel located on left-hand side

William Richards, III
Auctioneer
Florida License #AU0001621



HAPPY NEW YEAR! We're starting the year out with a BANG in Southern Florida. This year we are pleased to bring to you the collection of Sam and Blanche McGill from Connecticut to be sold at the 3rd Annual Sunshine State Carnival Glass Convention. These folks have collected for a number of years and have just decided to sell the glass and enjoy life a bit. The McGills loved pitchers, plates and tumblers, and there will be a real nice selection to choose from.

They have a number of rare and unusual pieces with a fantastic selection of Imperial Purple pitchers as well as others. Look over the listing and you'll see little damage and great color. Hope you find something ya like and have a safe new year in 2001!

This year's convention will be held at the Holiday Inn just off I-95 at Commercial Boulevard. You may want to call A.S.A.P. because rooms may be short. You can call the motel direct at (954) 776-4880 or (800) 873-6527 (for reservations only). For more information on the Convention or its activities, call John Nielsen at (561) 287-1443.

The weather is a heck of a lot better down in the South, so come and see us – if not at least let's hear from ya with a bid. See ya soon!

CHECK OUT BURNS AUCTION SERVICE ON THE WEB!

Visit our new Web site for information on upcoming auctions, complete auction listings and photos of auction highlights. You can e-mail your bids or requests for information.

<http://carnival.ksnews.com/burnsauction> e-mail: brnzauctsv@aol.com

BURNS AUCTION SERVICE

Tom Burns
P.O. Box 608, Bath, NY 14810
(607) 776-7942
Cell #: (607) 731-9302 (do not leave messages)

Bill Richards
44 Water St., Poland, OH 44514
(330) 757-2001
FAX (330)-757-4917

Bill Richards, III
2253 Country Lane
Poland, OH 44514
(330) 755-2620

Mail Bids honored under the following conditions:

1. No deposit required, Bidders will take full responsibility to honor any and all bids we execute for them. Payment in full plus postage and handling required after notification and before we ship any item to them.
2. Items are bid on in perfect condition with average or above average iridescence OR as listed in the brochures. Bids will not be carried out when damage on an item has been found during the auction. **PEOPLE PRESENT AT AUCTION ARE RESPONSIBLE FOR FINDING ANY PINHEADS, WEAR, SPOTTINESS, MANUFACTURER'S DEFECTS OR ANY OTHER MINOR FLAWS, ETC.**
3. Successful bidders will be notified by collect call from the auctioneer **(so be sure to include the phone number)**.
4. Phone inquiries about the glass or any other questions are welcome.
5. If you have some other person at the auction bidding for you, they must pay for the item before taking it.
6. Any terms or conditions given the day of the auction will supersede any previously published information.
7. Mail, e-mail, fax and phone bids are due by February 1, 2001.

Dealers Take Note: You must include a copy of your resale tax exemption form when signing in for both Florida Auctions. **DO NOT FORGET THIS!**

- | | |
|--|---|
| <p>____ 1. (10) Cards of (25) Buttons – Dark (selling choice; mostly florals)</p> <p>____ 2. Canada Dry Sparkling Orangeade Bottle w/ Labels – Mari. (labels in pretty good shape)</p> <p>____ 3. Jenkins Daisy and Diamond Cut Tumbler – Mari. (scarce; nice color)</p> <p>____ 4. European Rising Sun Tumbler – Mari. (rare and desirable; nice color and irid.)</p> <p>____ 5. 5-1/4" TALL FOSTORIA BROCADED ACORNS FTD. TUMBLER – LAVENDER (VERY RARE COLOR W/ NICE IRID. AND GOLD TRIM)</p> <p>____ 6. 5-1/4" Tall Fostoria Brocaded Acorns Ftd. Tumbler – Ice Blue (scarce w/ nice irid. and gold trim)</p> <p>____ 7. WESTMORELAND CORINTH J.I.P. VASE – BLUE OPAL. (RARE AND VERY DESIRABLE; NICE OPAL AND OVERLAY)</p> <p>____ 8. 8-3/4" Westmoreland Daisy Wreath 6 Ruffled Bowl – Blue Opal. (scarce; nice average color and opal.)</p> <p>____ 9. 8-1/2" Westmoreland Scales I.C. Shaped Bowl/ Plate – P. Opal. (scarce; nice opal.)</p> <p>____ 10. 9-1/2" TALL WESTMORELAND CRUCIFIX CANDLESTICK – DK. MARI. (SUPER, SUPER EXAMPLE; GREAT COLOR AND DETAIL; A TOUCH LIGHTER AT THE BASE)</p> <p>____ 11. 9-1/2" Westmoreland Louisa Ftd. Flared Plate – Mari. (scarce item; nice color)</p> <p>____ 12. 13-1/2" Tall "Rumtop" Large Covered Kitchen Jar w/ Fruit Pattern – Mari. (I dunno what this is...a large European cookie jar)</p> | <p>____ 13. European Swan Covered Butter Dish – Blue (rare pattern; nice color and irid.)</p> <p>____ 14. U.S. Glass Heart Band Tumbler – Green/ Gold Flash (scarce item; nice gold flash overlay)</p> <p>____ 15. U.S. GLASS PALM BEACH 7 PC. WATER SET – WHITE (VERY RARE AND VERY DESIRABLE SET; SUPER FROSTY W/ GREAT IRID.)</p> <p>____ 16. U.S. Glass Palm Beach Handled Water Pitcher – Honey Amber (rare and desirable; great base color and irid.)</p> <p>____ 17. 11" U.S. GLASS COSMOS AND CANE CHOP PLATE – HONEY AMBER (EXTREMELY RARE ITEM; GREAT COLOR AND IRID.; FROM MASTER BERRY BOWL)</p> <p>____ 18. 7" U.S. GLASS PALM BEACH ROUNDED SQUARE PLATE – LT. AMYTH./ GOOFUS DECOR. (QUITE A RARE ITEM W/ NICE BASE GLASS AND DECORATION)</p> <p>____ 19. Cambridge Buzz Saw Small Cruet and Stopper – Green (rare and desirable; perfect w/ great color and irid.)</p> <p>____ 20. CAMBRIDGE INVERTED THISTLE HANDLED WATER PITCHER – AMYTH. (EXTREMELY RARE ITEM W/ GREAT COLOR AND IRID.)</p> <p>____ 21. CAMBRIDGE INVERTED STRAWBERRY TANKARD WATER PITCHER – GREEN (ANOTHER EXTREMELY RARE COLORED ITEM; HAS GOLD HIGHLIGHTS)</p> |
|--|---|

- _____ 22. **CAMBRIDGE INVERTED STRAWBERRY TUMBLER – GREEN (RARE COLOR FOR THIS ITEM; REALLY NICE)**
- _____ 23. Cambridge Inverted Strawberry Tumbler – Amyth. (very scarce w/ nice color and great irid.)
- _____ 24. Cambridge Inverted Strawberry Tumbler – Mari. (rare color for this item also; nice irid.)
- _____ 25. **CAMBRIDGE INVERTED FEATHER TUMBLER – GREEN (EXTREMELY RARE ITEM W/ SUPER IRID.; NICE!)**
- _____ 26. M'burg Diamond 5 Pc. Water Set – Green (scarce set; well matched)
- _____ 27. M'burg Diamond Handled Water Pitcher – Mari. (pretty nice satiny example)
- _____ 28. M'burg Diamond Tumbler – Mari. (great color; nice irid.)
- _____ 29. M'burg Diamond Tumbler – Amyth. (excellent example w/ great irid.)
- _____ 30. **M'BURG MULTI-FRUITS AND FLOWERS TUMBLER – DK. MARI. (EXTREMELY RARE ITEM; DARK COLOR W/ BRIGHT IRID.)**
- _____ 31. M'burg Diamond Tumbler – Amber (odd base color w/ great irid.)
- _____ 32. 6" M'burg "the Great House of Isaac Benesch" 6 Ruffled Bowl – Amyth. (rare and always desirable; nice color and detail)
- _____ 33. M'burg Holly Sprig 2 Sided Card Tray w/ "54th Anniv. – the Great House of Isaac Benesch" Adv. – Mari. (satiny irid.; very scarce)
- _____ 34. M'burg Feather and Heart Tumbler – Amyth. (very scarce; nice satiny irid.)
- _____ 35. **M'BURG HOBNAIL HANDLED WATER PITCHER – AMYTH. (EXTREMELY RARE ITEM W/ A NICE SATINY IRID.)**
- _____ 36. **M'BURG FEATHER AND HEART HANDLED WATER PITCHER – GREEN (VERY RARE COLOR FOR THIS PATTERN; NICE IRID.)**
- _____ 37. 9-1/2" M'burg Nesting Swan 6 Ruffled Bowl – Amyth. (scarce, satiny; small flake on edge)
- _____ 38. N Springtime Tumbler – Mari. (scarce; nice average irid.)
- _____ 39. N Acorn Burr 5 Pc. Berry Set – Purp. (scarce set; nice dark color and irid.)
- _____ 40. **9" N THREE FRUITS STIPPLED PLATE W/ RIBBED EXT. – AQUA W/ OPAL. TIPS (VERY RARE; OPAL. ON TIPS; HAS GREAT IRID.; NICE)**
- _____ 41. N Three Fruits Bowl w/ P.C.E. and Plain Ext. – Green (scarce; nice satiny irid.)
- _____ 42. 9" N Three Fruits Plate w/ Basketweave Ext. – Amyth. (scarce; nice satiny irid.)
- _____ 43. 8-1/2" N Three Fruits P.C.E. Bowl w/ Basketweave Ext. – Amyth. (odd item; a bowl that wants to be a plate)
- _____ 44. 8-1/2" N Three Fruits 8 Ruffled Bowl w/ Basketweave Ext. – Green (nice satiny example)
- _____ 45. **N THREE FRUITS MEDALLION STIPPLED 8 RUFFLED FTD. BOWL W/ MEANDER EXT. – AQUA OPAL. (RARE AND DESIRABLE; NICE PASTEL EXAMPLE W/ LIGHT IRID.)**
- _____ 46. N Fruit and Flowers Stemmed 2 Handled Bon Bon w/ Basketweave Ext. – Mari. (satiny irid.)
- _____ 47. 9" N Plain "Rainbow" Plate w/ Basketweave Ext. – Green (scarce; satiny)
- _____ 48. 10-3/4" Tall N Diamond Point Standard Swung Vase – Purp. (super irid.; nice)
- _____ 49. 10-1/2" Tall N Thin Rib Standard Swung Vase – Emerald Green (super, super irid.; a keeper)
- _____ 50. **12-1/2" – 13" TALL X 4-1/2" BASE N THIN RIB MID SIZE SWUNG VASE – LIME ICE GREEN (VERY RARE ITEM IN A RARE COLOR; NICE)**
- _____ 51. **6-1/2" TALL N TORNADO LG. SIZE 3 RUFFLED VASE – GREEN (RARE AND DESIRABLE; PERFECT W/ A NICE SATINY IRID.)**
- _____ 52. **8-1/4" TALL N TREE TRUNK STANDARD SWUNG VASE – ICE BLUE (RARE SIZE W/ NICE COLOR AND IRID.; TOUGH!)**
- _____ 53. **(2) 8-1/4" – 8-1/2" N FOUR PILLARS VASES W/ RIBBED INTERIOR – TEAL/ SAPPHIRE (VERY RARE PAIR IN A RARE COLOR; SELLING CHOICE)**
- _____ 54. N'wood Concave Diamonds 8 Pc. Covered Lemonade Set – Celeste Blue (rare complete set inc. lid; great color and irid.)
- _____ 55. **N DANDELION TANKARD HANDLED WATER PITCHER – GREEN (VERY RARE AND VERY DESIRABLE W/ SUPER IRID.)**
- _____ 56. **N DANDELION TANKARD HANDLED WATER PITCHER W/ RIBBED INTERIOR – PURP. (VERY RARE W/ RIBBED INT.; SUPER IRID.; ETCHED "ELLA KRESS 1914" NEAR SPOUT)**
- _____ 57. (3) N Dandelion Tumblers – Purp. (nice color and irid. – selling choice)
- _____ 58. N Raspberry 7 Pc. Water Set – Dk. Mari. (super dark color on all items; really nice)
- _____ 59. 7-3/4" N Wild Strawberry Handgrip Plate w/ Basketweave Ext. – Purp. (super example w/ blue and red highlights)
- _____ 60. **9" N STRAWBERRY STIPPLED PLATE W/ BASKETWEAVE EXT. – GREEN (VERY RARE AND DESIRABLE; MULTI-COLORED SATINY FINISH – A TOUGHIE)**
- _____ 61. N Strawberry Stippled Bowl w/ P.C.E. and Ribbed Ext. – Dk. Mari. (very scarce and very desirable; nice color)
- _____ 63. N Hearts and Flowers Bowl w/ P.C.E. and Ribbed Ext. – Mari. (rare and very desirable; nice color and irid.; about 1/2" on edge not filled in)
- _____ 63. N Hearts and Flowers Stemmed 6 Ruffled Compote w/ Ribbed Ext. – White (scarce w/ average color and irid.)
- _____ 64. **N DRAPERY RUFFLED ROSE BOWL – BLUE/ ELEC. BLUE (RARE COLOR, VERY ATTRACTIVE; NICE ELEC. BLUE HIGHLIGHTS)**
- _____ 65. **N GRAPE ARBOR TANKARD WATER PITCHER – ICE BLUE (VERY RARE AND VERY DESIRABLE; NICE IRID. AND STRETCH EFFECT; SMALL FLAKE ON TOP RIM)**
- _____ 66. N Grape Arbor Tumbler – Ice Blue (very scarce; nice color and irid.; small chip on base)
- _____ 67. N Grape Arbor Tumbler – Lt. Ice Blue (very scarce; base color is lighter)
- _____ 68. **N GRAPE ARBOR 7 PC. TANKARD WATER SET – WHITE (RARE COMPLETE SET; NICE AND FROSTY)**
- _____ 69. N Grape Arbor Tankard Water Pitcher – Dk. Mari. (great color w/ bright irid.; nice)
- _____ 70. **N PEACOCKS 8 RUFFLED BOWL W/ RIBBED EXT. – AQUA OPAL. (RARE AND VERY DESIRABLE; SUPER PASTEL EXAMPLE)**
- _____ 71. **N PEACOCKS PLATE W/ RIBBED EXT. – BLUE / ELEC. BLUE (RARE AND DESIRABLE W/ NICE BLUE HIGHLIGHTS)**
- _____ 72. 8-3/4" N Peacocks Plate w/ Plain Ext. – Green (very scarce and desirable; goldish irid.)
- _____ 73. **N PEACOCK AT THE FOUNTAIN 7 PC. PUNCH SET – PURP. (RARE AND DESIRABLE; WHOLE SET HAS NICE EVEN IRID.)**
- _____ 74. N Peacock at the Fountain Tumbler – Ice Blue (rare and desirable w/ nice irid.)
- _____ 75. **N GREEK KEY 7 PC. TANKARD WATER SET – PURP. (VERY RARE SET W/ GREAT COLOR AND MULTI-COLORED IRID.)**
- _____ 76. N Dandelion Tumbler – Ice Blue (rare and desirable; nice dark color and irid.)
- _____ 77. N Dandelion Tumbler – White (rare and desirable; frosty w/ great irid.)
- _____ 78. **N WISTERIA TUMBLER – WHITE (VERY RARE AND DESIRABLE; NICE COLOR AND IRID.)**
- _____ 79. N Memphis 2 Pc. Fruit Bowl and Base – Purp. (scarce set w/ multi-colored irid.)
- _____ 80. **N ORIENTAL POPPY 7 PC. TANKARD WATER SET – PURP. (RARE AND DESIRABLE; NICE IRID. ESP. ON PITCHER)**
- _____ 81. N Oriental Poppy 7 Pc. Tankard Water Set – Dk. Mari. (very scarce; nice dark color; well matched)

82. **N ORIENTAL POPPY TUMBLER – ICE GREEN (RARE AND DESIRABLE; NICE BASE COLOR AND IRID.)**
83. N Oriental Poppy Tumbler – Ice Blue (rare and desirable; dark color; nice irid.)
84. 11-1/2" N G & C Lg. 8 Ruffled Master Berry Bowl w/ Basketweave Ext. – Mari. (nice large item w/ a satiny finish)
85. **9" N G & C VARIANT FLAT PLATE W/ RIBBED EXT. – GREEN (RARE AND VERY DESIRABLE; SUPER IRID. – REALLY NICE)**
86. 8-3/4" N G & C Variant Flared Plate w/ Ribbed Ext. and Old Rose Distillery Advertising – Green (rare and desirable adv. item w/ gold highlights)
87. 9-3/4" N G & C Salad Bowl w/ P.C.E. and Basketweave Ext. – Green (rare shape – from lg. ice cream bowl; satiny)
88. N G & C Table Set Creamer – Purp. (scarce; average irid.)
89. N G & C Table Set Spooner – Purp. (scarce; average irid.)
90. **N G & C 14 PC. MASTER PUNCH SET – MARI. (RARE AND VERY DESIRABLE SET; NICE EVEN COLOR AND SATINY IRID.)**
91. N Round Handled Bushel Basket – Ice Green (very scarce; nice dark color and irid.)
92. N Round Handled Bushel Basket – Blue/ Elec. Blue (scarce and very desirable w/ elec. blue highlights)
93. N Round Handled Bushel Basket – Mari. (odd variation; basketweave on handle different)
94. N Round Handled Bushel Basket – Mari. (scarce; average color and irid.)
95. **N ROUND HANDLED BUSHEL BASKET – LIME ICE GREEN (RARE BASE COLOR W/ NICE IRID.; TOUGH!)**
96. N Round Handled Bushel Basket – Purp. (scarce; has goldish highlights)
97. 6-1/4" N "DREIBUS PARFAIT SWEETS" HANDGRIP PLATE W/ BASKETWEAVE EXT. – AMYTH. (RARE AND VERY DESIRABLE ITEM; PERFECT W/ NICE COLOR AND GREAT IRID.)
98. 6-1/4" N "DREIBUS PARFAIT SWEETS" 2 SIDED CARD TRAY W/ BASKETWEAVE EXT. – AMYTH. (ANOTHER RARE ITEM W/ GREAT COLOR AND IRID.)
99. 6-1/4" N "FERN BRAND CHOCOLATES" 2 SIDED CARD TRAY W/ BASKETWEAVE EXT. – PURP. (AN EXCELLENT EXAMPLE W/ REALLY NICE IRID.)
100. **N LEAF AND BEADS FTD. ROSE BOWL W/ FLORAL INT. – TEAL / SAPPHIRE (EXTREMELY RARE BASE COLOR W/ A DARKER OVERLAY)**
101. **N LEAF AND BEADS FTD. ROSE BOWL – ICE BLUE (VERY RARE AND DESIRABLE; GREAT COLOR AND IRID.)**
102. N Leaf and Beads Ftd. Rose Bowl – White (rare and very desirable; frosty w/ excellent irid.)
103. N Leaf and Beads Ftd. Rose Bowl – Blue / Reninger's Blue (odd blue tint w/ elec. blue highlights)
104. **N WIDE PANEL 4 LILY EPERGNE – GREEN (RARE AND DESIRABLE; LILIES ARE GREAT; BASE IS SATINY)**
105. **N GRAPE AND GOTHIC ARCHES 7 PC. WATER SET – GREEN (VERY RARE SET TO FIND COMPLETE; SUPER COLOR W/ SUPER IRID.)**
106. **N GRAPE AND GOTHIC ARCHES 5 PC. WATER SET – PEARLIZED CUSTARD (RARE SET W/ SUPER PEARLIZED IRID.)**
107. N Wishbone Ftd. Plate w/ Ruffles and Rings Ext. – Purp. (rare item w/ a nice satiny irid.)
108. **N ROSE SHOW 8 RUFFLED BOWL – AQUA OPAL. (RARE AND DESIRABLE PASTEL EXAMPLE W/ GREAT OPAL.)**
109. N Rose Show Flared Plate – Blue (rare and desirable multi-colored irid.)
110. N Rose Show Flared Plate – Blue (another rare item; multi-colored; small flake on edge)
111. **N POPPY SHOW FLARED PLATE – PASTEL MARI. (RARE ITEM; LIGHTER COLOR W/ PINK AND BLUE HIGHLIGHTS)**
112. N Poppy Show 8 Ruffled Bowl – Pastel Mari. (like above item w/ a bit lighter irid.)
113. **N POPPY SHOW FLARED PLATE – WHITE (VERY SCARCE ITEM W/ GREAT PINK AND BLUE IRID.)**
114. N Poppy Show Deep Flared Plate – Purp. (very scarce; has goldish irid.)
115. **N GOOD LUCK STIPPLED PLATE W/ RIBBED EXT. AND NARROW BASE – BLUE (VERY RARE ITEM; IRID. LIGHTER ON EDGE; TOUGH!)**
116. **N GOOD LUCK BOWL W/ P.C.E. AND RIBBED EXT. – ELEC. BLUE (SUPER, SUPER ITEM W/ FANTASTIC IRID.)**
117. N Good Luck Bowl w/ P.C.E. and Ribbed Ext. – Blue (another nice item w/ blue and gold highlights)
118. N Good Luck Bowl w/ P.C.E. and Ribbed Ext. – Dk. Mari. (super example w/ an odd bright mari. finish)
119. N Good Luck 8 Ruffled Bowl w/ Basketweave Ext. – Amyth. (scarce item; has a satiny finish)
120. **N GOOD LUCK 8 RUFFLED BOWL W/ BASKETWEAVE EXT. – GREEN (QUITE AN ATTRACTIVE ITEM W/ A BRIGHT GREEN LOOK)**
121. N Good Luck 8 Ruffled Bowl w/ Ribbed Ext. – Amyth. (super example w/ bright irid.; really nice)
122. N Good Luck 8 Ruffled Bowl w/ Ribbed Ext. – Dk. Purp. (dark base color w/ nice irid.)
123. N Good Luck 8 Ruffled Bowl w/ Ribbed Ext. – Odd Amyth. (goldish highlights w/ an odd tint)
124. N Good Luck 8 Ruffled Bowl w/ Basketweave Ext. – Lt. Mari. (light in color w/ satiny irid.)
125. **GODDESS OF ATHENA FIGURAL EPERGNE – GREEN/TEAL (EXTREMELY RARE ITEM NOT OFTEN SOLD; BRIGHT GREEN BOWLS W/ A TEAL LILY)**
126. 8" Tall x 3-3/4" Base (Maker?) Stretch Flared Turned in Vase – Vaseline (unusual item w/ nice color)
127. 11-1/4" Tall Fenton Long Thumbprint Swung Vase – Green
128. 15-1/4" Tall Fenton Diamond Plate Columns Mid Size Swung Vase w/ Tight C.R.E. – Blue (scarce item w/ nice color and irid.)
129. 14-1/2" Tall Fenton Rustic Mid Size Swung Vase – Green (scarce w/ really nice color and irid.)
130. **19-1/4" TALL X 5-1/4" BASE FENTON RUSTIC SWUNG FUNERAL VASE – DK. MARI. (RARE W/ NICE DARK COLOR AND IRID.; TINY BRUISE ON BASE)**
131. 18-1/2" Tall x 5-1/4" Base Fenton Rustic Swung Funeral Vase – Blue (very scarce w/ nice irid.; has sharp point)
132. **12-1/2" TALL X 2-3/4" BASE FENTON FINE RIB SWUNG VASE – DK. RED (VERY SCARCE SIZE; REALLY DARK COLOR AND IRID.)**
133. 12" – 12-1/4" Tall Fenton 4 Pillar Vase w/ Howard Furniture Advert. – Green (very scarce w/ advertising; nice)
134. 11" Fenton Stretch Wide Panel Swung Vase – White (very scarce item; nice color and irid.)
135. **FENTON STRETCH 7 PC. FTD. NUT SET – VASELINE (RARE SET WHEN COMPLETE; WELL MATCHED W/ NICE COLOR)**
136. Fenton Stippled Rays Stretch Stemmed 6 Ruffled Compote – Vaseline (very scarce and attractive; great color)
137. 4-3/4" Tall Fenton Interior Diamond Stretch Perfume Bottle and Stopper – Velve Rose (rare item; dabber is broke, but who cares?)
138. 7" Tall Fenton Plain Stretch Era Perfume Bottle and Stopper – Grecian Gold (scarce item; has tall pointed stopper; stem as-is)
139. Fenton Plain Stretch 5 Pc. Tankard Style Water Set – Celeste Blue (rare set w/ tankard tumblers)
140. **8-1/2" X 6-1/2" FENTON 3 ROW OPEN EDGE BASKETWEAVE SQUARE RUFFLED HAT – CELESTE BLUE (RARE AND DESIRABLE; GREAT COLOR AND IRID.)**

- _____ 141. **FENTON 2 ROW LARGE SIZE 6 RUFFLED OPEN EDGE BASKETWEAVE HAT – CELESTE BLUE (ANOTHER RARE ITEM W/ GREAT COLOR AND IRID.)**
- _____ 142. Fenton 2 Row 2 Sided Open Edge Basketweave Hat – Ice Green (very scarce item; perfect w/ nice color)
- _____ 143. Fenton 2 Row 2 Sided Open Edge Basketweave Hat w/ Brand Furniture Advertisement – Dk. Mari. (scarce; nice color and irid.)
- _____ 144. Fenton 2 Row 2 Sided Open Edge Basketweave Hat w/ Miller Furniture Advertisement – Dk. Mari. (scarce; nice color and irid.)
- _____ 145. **FENTON 2 ROW 2 SIDED OPEN EDGE BASKETWEAVE HAT – REVERSE AMBERINA OPAL. (RARE AND VERY DESIRABLE; SUPER COLOR, ETC.)**
- _____ 146. 7" Fenton Horsehead Medallion 3 Ftd. 8 Ruffled Bowl – Green (very scarce; nice color and irid.)
- _____ 147. Fenton Horsehead Medallion Ftd. Rose Bowl – Mari. (scarce item w/ nice detail)
- _____ 148. 7" Fenton Horsehead Medallion I.C. Shaped Bowl – Mari. (nice satiny color and irid.)
- _____ 149. 6-1/2" Fenton Horsehead Medallion Round Flared Bowl – Mari. (nice satiny color and irid.)
- _____ 150. **9" FENTON "1911 BIRMINGHAM AGE HERALD – CARRIER'S GREETING" ADVERTISING FLAT PLATE – AMYTH. (EXTREMELY RARE; EXCELLENT EXAMPLE W/ GREAT DETAIL AND IRID.; REALLY NICE!)**
- _____ 151. **9-1/2" FENTON PEACOCK ANT THE URN FLAT PLATE – ELEC. BLUE (ABSOLUTELY FANTASTIC; HAS TO BE ONE OF THE BEST EXAMPLES THERE IS!)**
- _____ 152. 8-1/4" Fenton Peacock at the Urn I.C. Shaped Bowl – Blue (scarce; really nice satiny irid.)
- _____ 153. 9"-1/4" Fenton Heart and Vine Flat Plate – Blue (rare and desirable w/ nice irid.)
- _____ 154. 9-1/4" Fenton Heart and Vine (Variant) Flat Plate – Blue (rare variation w/ nice color and irid.)
- _____ 155. **9-9-1/4" FENTON "COMPLIMENT'S OF SPECTOR'S DEPARTMENT STORE" HEART AND VINE FLARED PLATE – DK. MARI. (RARE AND VERY DESIRABLE; NICE DARK COLOR AND IRID.)**
- _____ 156. 9-1/2" Fenton Persian Medallion Lg. Bowl w/ 3 in 1 Edge – Amyth. (scarce item; has nice color and irid.)
- _____ 157. 6-1/4" Fenton Persian Medallion Flat Plate – Mari. (satiny finish)
- _____ 158. 6-1/4" Fenton Persian Medallion Plate w/ O.T. Ext. – Blue (scarce w/ exterior pattern; satiny irid.)
- _____ 159. 6-1/4" Fenton Persian Medallion Plate w/ Plain Ext. – Blue (scarce w/ satiny irid.)
- _____ 160. **9" FENTON PERSIAN MEDALLION FLAT PLATE – MARI. (RARE SIZE IN THIS COLOR; SATINY IRID.)**
- _____ 161. **9-1/2" FENTON ORANGE TREE FLAT PLATE – BLUE (VERY SCARCE ITEM; NICE MULTI-COLORED IRID.)**
- _____ 162. **FENTON ORANGE TREE RUFFLED PUNCH BOWL AND BASE – WHITE (RARE AND DESIRABLE; FROSTY W/ EXCELLENT IRID.)**
- _____ 163. Fenton Orange Tree Ruffled Punch Bowl and Base – Blue (very scarce; nice bright color and irid.)
- _____ 164. Fenton Orange Tree Flared Punch Bowl and Base – Blue (rare w/ the flare; nice dark color)
- _____ 165. **FENTON ORANGE TREE SCROLL TANKARD WATER PITCHER – BLUE (VERY RARE ITEM; PERFECT W/ GREAT COLOR AND IRID.; REALLY NICE)**
- _____ 166. Fenton Orange Tree Scroll Tumbler – Blue (scarce item; has a satiny finish)
- _____ 167. Fenton Footed Orange Tree Tumbler – White (very scarce; great irid. and perfect feet)
- _____ 168. Fenton Orange Tree Orchard Tumbler – Dk. Mari. (dark color w/ nice irid.)
- _____ 169. Dugan God and Home Tumbler – Blue (scarce item; nice detail; got a bit out of order)
- _____ 170. **FENTON BLUEBERRY 7 PC. WATER SET – BLUE (RARE AND EXTREMELY DESIRABLE; ALL PIECES ARE BEAUTIFUL)**
- _____ 171. **FENTON FENTONIA FRUITS TUMBLER – BLUE (RARE VARIATION; NOT OFTEN SOLD; GOLD/ SATINY)**
- _____ 172. Fenton Lily of the Valley Tumbler – Blue (rare item; oblong in shape; satiny irid.)
- _____ 173. Fenton Fluffy Peacock Tumbler – Amyth. (scarce; nice color and really nice irid.)
- _____ 174. Fenton Floral and Grape Tumbler – Green (very scarce base color; nice dark irid.)
- _____ 175. **FENTON ENAMELED IRIS/ DIAGONAL BAND TANKARD WATER PITCHER – GREEN (AS DESIRABLE AN ITEM AS THERE IS; GREAT COLOR, IRID. AND SHAPE)**
- _____ 176. **FENTON ENAMELED FORGET-ME-NOT/ PRISM BAND TANKARD WATER PITCHER – AMYTH. (RARE AND DESIRABLE; PERFECT W/ GREAT COLOR AND DECOR.)**
- _____ 177. **FENTON ENAMELED COLUMBINE/ ZIG ZAG BULBOUS WATER PITCHER – PURP. (EXTREMELY RARE COLOR AND HAS SUPER IRID. – REALLY NICE)**
- _____ 178. **FENTON ENAMELED COLUMBINE/ ZIG ZAG BULBOUS WATER PITCHER – BLUE (ANOTHER RARE ITEM W/ GREAT COLOR AND IRID. – SUPER DESIRABLE)**
- _____ 179. **FENTON ENAMELED COLUMBINE/ ZIG ZAG 7 PC. BULBOUS WATER SET – MARI. (RARE SET TO FIND COMPLETE; NICE COLOR)**
- _____ 180. **FENTON ENAMELED DIANTHUS TANKARD WATER PITCHER – WHITE (RARE AND DESIRABLE; GREAT DECORATION AND DETAIL)**
- _____ 181. Fenton Enameled Freesia Tankard Water Pitcher – Mari./ Clear (rare item w/ great decoration; nice)
- _____ 182. 10" Fenton Fantail Lg. Ball Ftd. 6 Ruffled Bowl w/ B.B. Ext. – Dk. Mari. (a beautiful item w/ great color and irid.)
- _____ 183. 7-3/4" – 8" Fenton Peacock and Grape Deep 8 Ruffled Bowl – Mari. (scarce shape for this item; satiny)
- _____ 184. Fenton Strawberry Scroll Tumbler – Mari. (scarce; nice color, irid. and detail)
- _____ 185. **FENTON WINE AND ROSES FTD. HANDLED WATER PITCHER – BLUE (EXTREMELY RARE COLOR FOR THIS ITEM; ONLY REPORTED EXAMPLE IN THIS COLOR; SMALL CHIP ON BASE)**
- _____ 186. Fenton Wine and Roses Stemmed Goblet – Blue (scarce; matches above item)
- _____ 187. 8-3/4" Fenton Lotus and Grape 8 Ruffled Bowl – Blue (scarce; nice color and irid.)
- _____ 188. 9" Fenton Holly 6 Ruffled Bowl – White (scarce; frosty w/ light irid.)
- _____ 189. Fenton Floral and Grape Tumbler – White (very scarce; has nice irid.)
- _____ 190. **FENTON MILADY TANKARD WATER PITCHER – BLUE (RARE AND VERY DESIRABLE; GREAT COLOR; TOUGH)**
- _____ 191. (3) Fenton Milady Tumblers – Blue (nice color and irid.; selling choice)
- _____ 192. **FENTON MILADY TANKARD WATER PITCHER – DK. MARI. (ANOTHER RARE ITEM IN A RARE COLOR; REALLY NICE)**
- _____ 193. Fenton Butterfly and Fern Bulbous Water Pitcher – Mari. (scarce; average color and irid.)
- _____ 194. Fenton Blackberry Block Tumbler – Mari. (scarce; nice color and detail)
- _____ 195. **FENTON BLACKBERRY BLOCK TANKARD WATER PITCHER – DK. MARI. (RARE AND VERY DESIRABLE; NICE COLOR AND IRID.)**
- _____ 196. **FENTON PANELED DANDELION 7 PC. TANKARD WATER SET – BLUE (RARE SET; PITCHER IS ONE OF THE BETTER EXAMPLES I'VE SEEN)**

- _____ 197. Fenton Paneled Dandelion Tankard Water Pitcher and (2) Tumblers – Green (scarce items; tumblers sold separately)
- _____ 198. Fenton Paneled Dandelion 5 Pc. Tankard Water Set – Amyth. (very scarce set; nice satiny finish)
- _____ 199. Fenton Paneled Dandelion 7 Pc. Tankard Water Set – Mari. (very scarce color perfect w/ nice color)
- _____ 200. **7-1/4" FENTON 1911 ATLANTIC CITY B.P.O.E. ELKS FLARED PLATE – BLUE (RARE AND DESIRABLE; SATINY FINISH AND DETAIL)**
- _____ 201. 8-3/4" Fenton Thistle 6 Ruffled Bowl w/ Horlacher Advertising – Amyth. (very scarce; satiny finish and irid.)
- _____ 202. 7-1/2" Fenton Vintage Grape 6 Ruffled w/ Horlacher Advertising – Mari. (scarce advertising item; satiny irid.)
- _____ 203. 7-1/4" Fenton Peacock Tail 6 Ruffled Bowl w/ Horlacher Advertising – Green (scarce advertising item; satiny irid.)
- _____ 204. Fenton Peacock Tail 6 Ruffled Hat w/ "1910 General Furniture" Advertising – Green (scarce w/ satiny irid.)
- _____ 205. **8" FENTON LIONS FLAT PLATE – MARI. (RARE AND VERY DESIRABLE; NICE AVERAGE COLOR AND IRID.)**
- _____ 206. 6-1/2" Fenton Sailboats Flat Plate – Mari. (very scarce and desirable; nice satiny example)
- _____ 207. 6" Fenton "Seasons Greetings – Eat Paradise Sodas" Advertising Plate – Amyth. (rare and desirable; nice satiny finish)
- _____ 208. 10-3/4" Fenton Chrysanthemum Lg. Ball Ftd. I.C. Shaped Bowl – Blue (scarce; has goldish highlights)
- _____ 209. Fenton Scotch Thistle Stemmed 6 Ruffled Crimped Edge Compote – Mari. (scarce w/ nice satiny finish)
- _____ 210. **FENTON WREATH OF ROSES/ VINTAGE INT. 8 PC. PUNCH SET – AMYTH. (VERY SCARCE AND WELL MATCHED; SATINY AND BRIGHT)**
- _____ 211. Fenton Wreath of Roses/ Vintage Int. Punch Bowl and Base – Green (very scarce; has a nice satiny finish)
- _____ 212. Fenton Grape and Lattice 7 Pc. Tankard Water Set – Dk. Mari. (super, super color and irid. for this set)
- _____ 213. 5-1/8" Imperial Colonial Flute Stretch Tankard Tumbler – Teal (very scarce item in a scarce color)
- _____ 214. 5-1/8" Imperial Colonial Flute Stretch Tankard Tumbler – White (very scarce item; frosty and nice)
- _____ 215. **IMPERIAL 474 MID SIZE HANDLED WATER PITCHER – PURP. (ABSOLUTELY FANTASTIC EXAMPLE OF THIS RARE ITEM; SUPER IRID.)**
- _____ 216. Imperial 474 Tumbler – Purp. (scarce item; irid. a bit goldish)
- _____ 217. Imperial 474 5 Pc. Large Size Water Set – Dk. Mari. (nice color and irid. esp. on the pitcher)
- _____ 218. Imperial Fashion Tumbler – Smoke (odd color; has a marigold overlay)
- _____ 219. Imperial Soda Gold Tumbler – Smoke (scarce w/ super irid.)
- _____ 220. **IMPERIAL WINDMILL LARGE SIZE HANDLED WATER PITCHER – PURP. (EXTREMELY RARE ITEM W/ GOLD AND RED HIGHLIGHTS)**
- _____ 221. (3) Imperial Windmill Tumblers – Purp. (super examples; selling choice)
- _____ 222. **IMPERIAL WINDMILL HANDLED MILK PITCHER – PURP. (RARE AND VERY DESIRABLE; NICE BLUE HIGHLIGHTS)**
- _____ 223. **IMPERIAL WINDMILL HANDLED MILK PITCHER – SMOKE (VERY RARE BASE COLOR FOR THIS ITEM; NICE EXAMPLE)**
- _____ 224. Imperial Hobstar Band Pedestaled Water Pitcher – Mari./ Clear (rare shape but could have better color)
- _____ 225. **IMPERIAL TIGER LILY HANDLED WATER PITCHER – PURP. (RARE AND VERY DESIRABLE; HAS RED AND GOLD HIGHLIGHTS)**
- _____ 226. Imperial Grape 7 Pc. Water Set – Purp. (very scarce, complete set w/ great irid.)
- _____ 227. Imperial Diamond Lace 7 Pc. Water Set – Purp. (scarce; typical multi-colored irid.)
- _____ 228. **IMPERIAL FILE TUMBLER – DK. MARI. (RARE ITEM; DARK COLOR AND IRID.; REALLY NICE)**
- _____ 229. Imperial Laurel Band Ftd. Tumbler – Dk. Mari. (scarce pattern; nice dark color)
- _____ 230. **IMPERIAL FASHION HANDLED WATER PITCHER – PURP. (ONE OF MY FAVORITES OF ALL TIME; SUPER RARE AND NICE; SMALL NICK ON HANDLE)**
- _____ 231. **8-1/4" IMPERIAL HEAVY GRAPE FLAT PLATE – AMBER (EXCELLENT EXAMPLE OF A VERY SCARCE ITEM TO FIND)**
- _____ 232. 8" Imperial Heavy Grape Flat Plate – Purp. (super example w/ great irid.)
- _____ 233. 8" Imperial Heavy Grape Flat Plate – Helios Green (silvery highlights)
- _____ 234. 8" Imperial Heavy Grape Flat Plate – Mari. (nice satiny irid.)
- _____ 235. **IMPERIAL CHATELENE HANDLED WATER PITCHER – PURP. (VERY RARE AND VERY DESIRABLE; SUPER IRID.)**
- _____ 236. (4) Imperial Chatelene Tumblers – Purp. (range from goldish to great; selling choice)
- _____ 237. Imperial Fieldflower Tumbler – Mari. (nice color and irid.)
- _____ 238. **IMPERIAL FIELDFLOWER WATER PITCHER – AMBER (VERY RARE COLOR FOR THIS ITEM; REALLY NICE)**
- _____ 239. Imperial Fieldflower Water Pitcher – Helios Green (scarce; typical silvery highlights)
- _____ 240. **IMPERIAL FIELDFLOWER 7 PC. WATER SET – PURP. (RARE SET TO FIND COMPLETE; HAS SUPER COLOR AND IRID.)**
- _____ 241. 9" Imperial Pansy 8 Ruffled Bowl – Purp. (has nice multi-colored irid.)
- _____ 242. **IMPERIAL FLUTE 7 PC. WATER SET – PURP. (VERY RARE SET TO FIND COMPLETE; NICE)**
- _____ 243. Imperial Oval and Round Rose Bowl – Dk. Mari. (scarce; nice dark color)
- _____ 244. Imperial Poinsettia Handled Milk Pitcher – Dk. Mari. (nice color and irid.)
- _____ 245. **IMPERIAL OCTAGON 6 PC. LARGE SIZE WATER SET – PURP. (VERY RARE SET; THIS ITEM IS TOUGH TO FIND)**
- _____ 246. Imperial Flute and Absentee Cane Handled Milk Pitcher – Dk. Mari. (scarce; nice color)
- _____ 247. **IMPERIAL LUSTRE ROSE 7 PC. WATER SET – PURP. (VERY RARE SET TO FIND COMPLETE; NICE)**
- _____ 248. 10-3/4" Imperial Stretch Floral and Optic Ftd. Cake Plate – White (very scarce; frosty w/ really nice irid.)
- _____ 249. 9" Imperial Embossed Scroll Flared Plate – Purp. (scarce item w/ nice irid.)
- _____ 250. **9" IMPERIAL OPEN ROSE FLAT PLATE – PURP. (EXTREMELY RARE AND VERY DESIRABLE; SUPER!)**
- _____ 251. **10-1/4" IMPERIAL HOMESTEAD CHOP PLATE – GREEN (RARE AND DESIRABLE; HAS A SATINY IRID.)**
- _____ 252. **10-1/4" IMPERIAL HOMESTEAD CHOP PLATE – PURP. (RARE AND DESIRABLE; HAS A SATINY IRID.)**
- _____ 253. **10-1/4" IMPERIAL HATTIE CHOP PLATE – HELIOS GREEN (VERY SCARCE W/ TYPICAL SILVERY IRID.)**
- _____ 254. 8-1/4" Imperial Columbia Domed Flat Plate – Pastel Mari. (scarce; great irid.)
- _____ 255. 16-1/2" Tall x 4-3/4" Base Imperial Morning Glory Swung Funeral Vase – Green (very scarce and desirable item; nice size and color)
- _____ 256. 16-1/2" Tall x 3-3/4" Base Imperial Ripple Mid Size Swung Vase – Dk. Mari. (nice size w/ great color and irid.)
- _____ 257. 13-1/4" Tall x 3-1/2" Base Imperial Ripple Swung Vase – Purp. (super irid; nice example)
- _____ 258. 10-3/4" – 11" Tall Imperial Ripple Standard Swung Vase – Purp. (scarce; nice color and irid.)
- _____ 259. 12-3/4" Tall Imperial Ripple Standard Swung Vase – Amber (very scarce base color; nice irid.)

- _____ 260. **10" TALL IMPERIAL "CONCAVE DIAMONDS" LARGE CYLINDER VASE – MARI. (NOT SURE OF PATTERN BUT STILL QUITE RARE)**
- _____ 261. 11-1/2" Tall Imperial Bullseye and Beads Swung Vase – Purp. (super color and irid.; nice item)
- _____ 262. 12" Tall Imperial Bullseye and Beads Swung Vase – Purp. (another nice colored item)
- _____ 263. 8-1/4" Tall Imperial Bullseye and Beads Squatty Swung Vase – Green (scarce color; nice example)
- _____ 264. 10-3/4" Tall Imperial Bullseye and Beads Swung Vase – Dk. Mari. (really nice dark color and irid.)
- _____ 265. **DUGAN HEAVY IRIS 5 PC. TANKARD WATER SET – PURP. (RARE AND VERY DESIRABLE SET; NICE IRID.)**
- _____ 266. Dugan Dahlia Tumbler – Amyth. (scarce color w/ bright satiny irid.)
- _____ 267. Dugan Cherry Wreath Tumbler w/ Enameled Decoration – White (rare item w/ great frosty color and decoration)
- _____ 268. Dugan Cherry Wreath Handled Water Pitcher – Purp. (rare item in this color; nice satiny irid.)
- _____ 269. Dugan Cherry Wreath Tumbler – Purp. (matches above item; satiny)
- _____ 270. **DUGAN HARVEST FLOWER 7 PC. TANKARD WATER SET – DK. MARI. (EXTREMELY RARE SET; NOT MANY KNOWN; THE PITCHER IS SUPER)**
- _____ 271. 7" Dugan Fishscale and Beads Flat Plate – Amyth. (scarce item w/ a satiny finish)
- _____ 272. 7-1/2" Dugan Fishscale and Beads Flat Plate – White (scarce w/ light irid.)
- _____ 273. 7" Dugan Fishscale and Beads Flared Plate – Mari. (scarce w/ a satiny finish)
- _____ 274. 7" Dugan Flower and Beads Exterior Flared Plate – Purp. (super interior irid.; really nice)
- _____ 275. **11-1/4" DUGAN GARDEN PATH VARIANT CHOP PLATE W/ SODA GOLD EXT. – PURP. (EXTREMELY RARE W/ GREAT IRID.; SLIGHT MOLD ROUGHNESS ON BASE)**
- _____ 276. **11" DUGAN WISHBONE AND SPADES CHOP PLATE W/ SODA GOLD EXT. – PURP. (EXTREMELY RARE W/ THIS EXTERIOR PATTERN; NICE)**
- _____ 277. **9" DUGAN ROUND UP LOW 10 RUFFLED BOWL/ PLATE – PURP. (SUPER, SUPER ITEM; GREAT IRID.; MANUF. PULLED POINTS ON EDGE)**
- _____ 278. 6-1/4" Dugan Cherries/ Jeweled Heart Ext. Flared Crimped Edge Plate – Purp. (very scarce w/ super irid.)
- _____ 279. 6-1/4" Dugan Petal and Fan/ Jeweled Heart Ext. Flared Crimped Edge Plate – Purp. (very scarce w/ super irid.; nice)
- _____ 280. 6-1/2" Dugan Persian Garden Flat Plate – Amyth. (very scarce item w/ a satiny finish)
- _____ 281. 6-1/4" Dugan Persian Garden Flared Plate – Mari. (satiny; nice color)
- _____ 282. 6-3/4" Dugan Persian Garden/ Pool of Pearls Ext. Flat Plate – White (scarce; nice color and irid.)
- _____ 283. 11-1/2" Dugan Persian Garden Lg. Ice Cream Bowl – White (scarce item; has light irid.)
- _____ 284. 9" Dugan Double Stem Rose Domed Flared Plate – White (scarce shape w/ super irid.)
- _____ 285. **DUGAN CIRCLE SCROLL 7 PC. WATER SET – DK. MARI. (EXTREMELY RARE SET; NICE COLOR AND IRID.; THERE MAY BE ROUGHNESS IN THE PATTERN; TYPICAL)**
- _____ 286. **9-1/2" TALL DUGAN BIG BASKETWEAVE SWUNG VASE – ICE BLUE (RARE AND VERY DESIRABLE ITEM; NICE COLOR AND AVERAGE IRID.)**
- _____ 287. 10-1/2" Tall Dugan Big Basketweave Swung Vase – Blue (rare base color w/ a nice satiny finish)
- _____ 288. 9-1/2" Tall Dugan Big Basketweave Swung Vase – Dk. Mari. (satiny example; nice color)
- _____ 289. 4-3/4" Tall Dugan Big Basketweave Unswung Squatty Vase – Purp. (rare item w/ bright highlights of all colors)
- _____ 290. **DUGAN VINEYARD BULBOUS WATER PITCHER – P. OPAL. (EXTREMELY RARE COLOR; WHERE DO YA FIND 'EM?)**
- _____ 291. 9" Dugan Fanciful Low 10 Ruffled Bowl/ Plate – P. Opal. (scarce; nice satiny finish w/ opal. on edge)
- _____ 292. Dugan Ski Star Domed Crimped Edge Handgrip Plate – P. Opal. (scarce shape for this item; nice opal.)
- _____ 293. 6-1/2" Dugan Ski Star Plate w/ Crimped Edge – P. Opal. (very scarce item w/ really nice opal.)
- _____ 294. 7" Dugan Fishscale Plate w/ Crimped Edge – P. Opal. (scarce item w/ nice opal. and irid.)
- _____ 295. **8" DUGAN VINING TWIGS WHIMSEY PLATE FROM VASE MOLD – LT. P. OPAL. (VERY RARE SHAPE FOR THIS PATTERN; LIGHT OPAL. ON EDGE)**
- _____ 296. Dugan Fan Ftd. Handled Gravy Boat – P. Opal. (nice opal. and average irid.)
- _____ 297. **DUGAN PETAL AND FAN 7 PC. RUFFLED BERRY SET W/ JEWEL HEART EXT. (LG. – 8 RUFFLED; SM. – 6 RUFFLED) – WHITE (RARE, ATTRACTIVE SET; FROSTY W/ GREAT IRID.)**
- _____ 298. 7" Dugan Grapevine Lattice Low 8 Ruffled Bowl/ Plate – White (frosty w/ nice irid.)
- _____ 299. 9" Tall Dugan Twigs Bud Vase – Amyth. (scarce; nice)
- _____ 300. Dugan Floral and Grape Bulbous Water Pitcher – Purp. (very desirable item w/ bright highlights)
- _____ 301. 12" Tall Dugan Target Swung Vase – Purp. (very scarce item w/ nice irid.; points are like fingers)
- _____ 302. 8" Tall Dugan Vining Twigs Swung Vase – Amyth. (scarce satiny example)
- _____ 303. 9" Tall Dugan Vining Twigs Swung Vase – Mari. (satiny example)
- _____ 304. (2) Dugan Heavy Iris Tumblers – Amyth. (selling choice; average satiny finish)

ADVANCE AUCTION NOTICE

Be sure to make plans for the Decker Auction on March 9 & 10, 2001 at the Holiday Inn, Strongsville, Ohio... Lots of pastels and rarities. Call now for reservations at 440-238-8800.

Details in upcoming brochure to be sent ASAP.

NOTES

FOR THE RESULTS OF THIS OR ANY BURNS AUCTION SERVICE AUCTION SEND A S.A.S.E. AND \$3.00 (INCLUDE NAME OR DATE OF AUCTION) TO:

EMMA TILTON
P.O. BOX 273
GNADENHUTTEN, OH 44629

VISIT US ON THE WEB!

<http://carnival.ksnews.com/burnsauction>
for pictures, complete listings and upcoming auctions



BURNS

AUCTION SERVICE
 P.O. BOX 608 • BATH, NEW YORK 14810

First Class Mail
 U.S. Postage
 PAID
 Eugene, Oregon
 Permit No. 305



Sunshine State Carnival Glass Club Convention Auction

Preview—Friday Evening and
 8:00 A.M. Saturday
Auction—9:00 A.M. Saturday

