

CARNIVAL GLASS AUCTION

700 PLUS* BELIOT WISCONSIN COLLECTION

MAMIE BELL ESTATE

Saturday, September 16, 2000 9:00 a.m. C.D.T.

Mickey Reichel Antique & Auction L.C.

Held Inside the Mickey Reichel Auction Center, Boonville, Missouri

Office: 660-882-5292 • Home: 660-882-5283



Direct e-mail: mreichel@undata.com

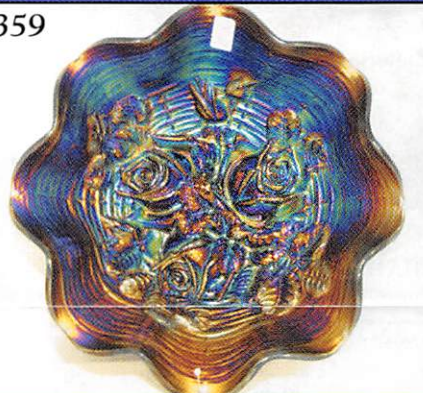
322



358



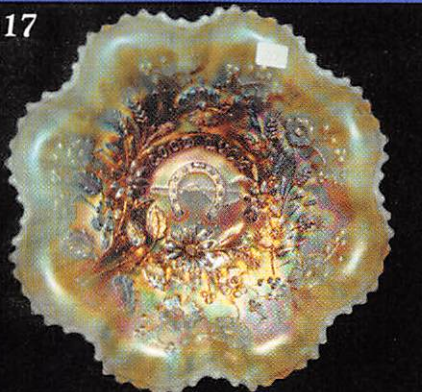
359



130



317



126



318



331



321



NO BUYERS PREMIUM

Held Inside the Mickey Reichel Auction Center

1 Mile North of I-70 on Hwy. 5, Exit 101, Boonville, Missouri • 20 Miles West of Columbia, MO on I-70
Preview Friday 12 p.m. - 6 p.m. and 7:30 a.m. - 9:00 a.m. Day of Auction

Make Reservations **EARLY** at one of these local motels:

Days Inn: 660-882-8624 • Comfort Inn: 660-882-5317 • Super 8: 660-882-2900

Auction Consists of Rarity, Great Irid. and Variety

WRITE IN BIDS: If you are unable to attend the auction, we will be happy to accept absentee bids which must be received by THURSDAY, SEPTEMBER 14, 2000. Don't Delay.

FOR AUCTION PRICE RESULTS: Send \$3.00 and Large S.A.S.E. to 516 Third Street, Boonville, MO 65233-1536

PLEASE NOTE: There is a **\$5 handling charge for each successful bid which will be added to the selling price** for all write-in bids. This is in addition to the cost of postage, insurance and packing. Your write-in bid will be entered just as if you are present and bidding. **Successful bidders will be notified in 1 to 3 days by the auctioneer** (so be sure to include your **phone number**). Direct mail bids to Auctioneer Mickey Reichel, 516 Third Street, Boonville, MO 65233-1536. Terms: Cash or Check accepted with proper I.D. and Social Security Number and References. Announcements made day of the auction supercede all printed material. Not Responsible for Accidents or Sold Items.

No return on any items once they leave the Auction Center (No Exceptions).****

Call for additional information: 660-882-5292 days or 660-882-5283 evenings before 9:00 p.m.

FAX: 660-882-5292 (evening hours start FAX transmission after beep)

MAIL BIDS: Items are bid on in perfect condition with average or above iridescence OR as listed in the brochures. Bids will not be carried out when damage on an item has been found during the auction.

PEOPLE PRESENT AT AUCTION ARE RESPONSIBLE FOR FINDING ANY PINHEADS, WEAR, SPOTTINESS, MANUFACTURER'S DEFECTS OR ANY OTHER MINOR FLAWS, ETC. ****

NOTE: Read each line, as we have accentuated the type of no particular piece, all are special.

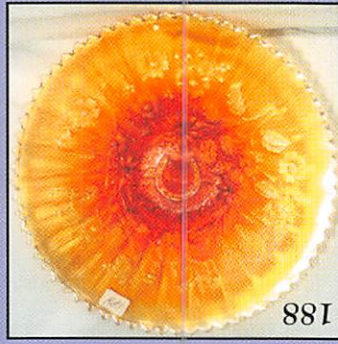
THANK YOU FOR ATTENDING TODAY

- | | |
|--|---|
| _____ 1. M - <u>N</u> Grape Arbor Tumbler | _____ 23. M - Fashion Tumbler |
| _____ 2. <u>W</u> - <u>N</u> Peach Tumbler | _____ 24. <u>A</u> - Paneled Dandelion Tumbler |
| _____ 3. Celeste Blue - <u>N</u> Concave Diamonds Tumbler - 2 x \$ | _____ 25. M - Crab Claw Tumbler |
| _____ 4. <u>G</u> - <u>N</u> Grape & Cable Tumbler | _____ 26. <u>P</u> - Heavy Iris Tumbler - Base Nicks |
| _____ 5. P - <u>N</u> Grape & Cable Tumbler - 6 x \$ | _____ 27. M - Heavy Iris Tumbler - Base Nicks |
| _____ 6. <u>M</u> - Grape & Gothic Arches Tumblers - 3 x \$ | _____ 28. <u>M</u> - Beaded Stork & Rushes Tumbler |
| _____ 7. P - <u>N</u> Oriental Poppy Tumblers - 4 x \$ | _____ 29. B - Dugan Peacock at Fountain Tumbler - Dull Finish |
| _____ 8. <u>P</u> - <u>N</u> Dandelion Tumblers - 6 x \$ | _____ 30. <u>B</u> - Fentonia Tumbler |
| _____ 9. P - <u>N</u> Wishbone Tumblers - 4 x \$ | _____ 31. M - Fenton Waterlily & Cattail Tumbler |
| _____ 10. <u>M</u> - <u>N</u> Acorn & Burr Tumbler - Sgn. 1914 | _____ 32. <u>A</u> - Rambler Rose Tumbler - 2 x \$ |
| _____ 11. P - <u>N</u> Acorn & Burr Tumblers - 3 x \$ | _____ 33. M - Maple Leaf Tumbler |
| _____ 12. <u>P</u> - <u>N</u> Greek Key Tumbler - Flawed Base | _____ 34. <u>M</u> - Ftd. Ruffled <u>N</u> Wishbone Bowl |
| _____ 13. G - <u>N</u> Singing Birds Tumbler | _____ 35. A - 8 1/4" Ftd. <u>N</u> Wishbone Plate |
| _____ 14. <u>M</u> - <u>N</u> Dandelion Tumbler | _____ 36. <u>P</u> - 9 1/2" PCE Collar Base Wishbone Bowl |
| _____ 15. M - Imp. Field Flowers Tumbler | _____ 37. PO - Nautilus Creamer - Sgn. <u>W</u> in Script |
| _____ 16. <u>P</u> - Imp. Windmill Tumbler - Elec. | _____ 38. <u>P</u> - Nautilus Creamer - Base Chip |
| _____ 17. G - Butterfly & Fern Tumbler - Variant | _____ 39. A - <u>N</u> Cable & Cable Powder Jar w/Lid |
| _____ 18. <u>B</u> - Orange Tree Vt. Tumbler - Very Scarce | _____ 40. Celeste B - Swan Salt |
| _____ 19. P - Imp. Lustre Rose Tumblers - 2 x \$ - Super Elec. | _____ 41. Florentine Ice Green - Swan Salt - Pastel |
| _____ 20. <u>P</u> - Dia. Lace Tumblers - 5 x \$ | _____ 42. <u>P</u> - 8 1/2" <u>N</u> Ruffled Strawberry Bowl - Plain Ext. |
| _____ 21. M - Octagon Tumblers - 2 x \$ | _____ 43. M - 9" Ruffled Fenton Wild Blackberry Bowl |
| _____ 22. <u>G</u> - Paneled Dandelion Tumblers - 6 x \$ | _____ 44. <u>P</u> - 8 1/2" Ruffled <u>N</u> Ftd. Poinsettia & Lattice Bowl |
| | _____ 45. M - 9" Cherry Circles Bon Bon - 4 Sides Up |
| | _____ 46. <u>A</u> - 9 1/2" Fenton Three Fruits Plate w/Wear |

47. A - 9", 6-Ruffle Whimsey Bowl, from Vintage Nut Bowl, Fenton
48. **B - 7¼" CRE Fenton Concord Bowl - Very Scarce**
49. B - 8½", 6-Ruffle Fenton Concord Bowl - Very Scarce
50. **P - N Grape & Cable Hatpin Holder - Extra Nice Ex.**
51. PM - 9" N Grape & Cable Vt. Plate - Smooth Ext. - Real Beauty
52. **IB - PCE Nippon Bowl - Rib Ext. - Also very pretty**
53. Rich Pastel M - Hearts & Flowers Compote
54. **Deep Blue - 5½" Fenton, 6-Ruffle Rib Vase - 5½" Top**
55. Rare Smoke - Fashion, Breakfast Size, Cream & Sugar
56. **A - N 9" Strawberry Plate - Ultra Radium**
57. B - N Peacock at Fountain Punch Bowl w/Purple Base - Still Outstanding Set
58. **P - N Ivy Town Pump - Minor Nicks (So?)**
59. G - N Ivy Town Pump - Bruise on Base - Still Rare Find & Beautiful
60. **B - 4-Side Pinch, 2⅞" Tall Kittens Vase or Toothpick Holder**
61. M - Kittens Cup & Saucer - Radium & Nice Match
62. **M - 4⅞" Kittens Plate or Saucer - Silver w/Pink Highlights**
63. M - 5¼" Tall Little Basketweave Hdl. Basket
64. **B - Two Fruits Divided Fenton Bon Bon**
65. B - Birds & Cherries Ruffled Compote
66. **A - Beaded Shell Mug**
67. Beautiful M - Singing Birds Mug
68. **M - Imp. Stippled Robins Mug (Old)**
69. M- Orange Tree Wine Glass
70. **Russet - 8½" N Florentine Candlesticks**
71. IB - Grape & Cable Oval Pin Tray - RARE
72. **M - Grape & Cable Oval Pin Tray**
73. P - Grape & Cable Oval Pin Tray - Epoxy on Edge
74. **M - 4½" Imp. Morning Glory Mini Vase - 3⅞" Top**
75. P - Imp. Flute, 5½" Vase - Rare - Chip & Bruise - Still Great Piece
76. **G - Corn Vase w/Floral Base - Blue Highlights**
77. BO - 8" Dugan Corn Vase w/Open Husk - No Irid.
78. **Contemp. Vas. Opal - 7¼" Corn Vase**
79. P - Sm. Size N Grape & Cable Punch Bowl Base
80. **P - S - Repeat Punch Bowl Base - Beautiful Item**
81. Crystal - Imp. 6-Sided Candlesticks
82. **Mlbg. Crystal - 9¼" Ohio Star Vase**
83. All Crystal - Hobstar & Feather Mlbg. Punch Bowl Base
84. **Rare Blue - Imp. 5¼", 8-Ruffle Scroll Embossed Compote - Radium Elec.**
85. M - 5¼" Hand Vase - Left Hand
86. **M - 9¼" Fish Vase - Sgn. Jain**
87. M - 9½" ? Czech, Unknown Pattern, Vase
88. **Super White - 4¼" Scalloped Cosmos & Cane Berry Bowl - Round**
89. Super White - Cosmos & Cane Butter Dish - Lid Only
90. **Celeste B - Stretch, 8¼" Rolled Rim, Tree Bark Base, Compote**
91. M Base - 5" Round Australian Crystal Bowl - Pattern?
92. **M - 8¾", 12-Ruffle Australian Butterfly Bush Compote**
93. M - Aust. 5½", 12-Ruffle Kangaroo Bowl
94. **M - Aust. 5½", 8-Ruffle Magpie Bowl**
95. BA - Aust. 5½", 12-Ruffle Shrike Bowl
96. **BA - Aust. 5¼", 12-Ruffle Kingfisher Bowl**
97. BA - Aust. 10", 8-Ruffle Magpie Bowl
98. **BA - Aust. 9½", 12-Ruffle Kingfisher Bowl**
99. M - Aust. 9½", 16-Ruffle Swan Bowl
100. **M - Aust. 9¼", 12-Ruffle Shrike Bowl**
101. BA - Aust. 8¾" Tall Vase - See Photo
102. **Crystal - Aust. 8½" Round, Deep, M - Poppys Bowl**
103. Crystal - Aust. 4½" Round, Golden Poppys Bowls - A, B, C or D
104. **M - 12" Ball Ftd. Stag & Holly Chop Plate**
105. Smokey Amber? - Little Barrel - Normal Rim Roughness
106. **Smoke - Mini Corn Bottle - A Beauty - Rim Chips**
107. Smoke Flashed - Mini Estate Powder Jar w/Lid
108. **Smoke Flashed - Mini Estate Perfume Bottle w/Stopper**
109. M - Mini Itaglio Nut Cup Compote
110. **M Flashed - Mini Portland Powder Jar w/Lid**
111. M Flashed - Mini Little Gypsy Pot - Souvenir of Portland, MI
112. **M Flashed - Diamonds S & P w/Lids**
113. Flash M - Hickman Mini Cruet w/No Stopper
114. **G - Imp. Flute Toothpick Holder - Scarce & Nice**
115. P - Dia. & Sunburst Wine Glass
116. **PM - PCE, Stipple, 3-Fruits, Rib Back Bowl**
117. M - Pond Lily Bon Bon - 4 Sides Up
118. **M - Imp. Pansy Nappy**
119. M - Ruffled Stream of Hearts Persian Med. Compote
120. **Stretch Red - 5" Tall Vase - 4" Top - 2½" Base**
121. Stretch IG - Dugan Candlestick Vases
122. **Stretch Celeste B - Dugan Candlestick Vases - One w/Rim Chip**
123. Clambroth - 11" Ftd. Floral & Optic Cake Plate
124. **M - 10½" Ftd. Floral & Optic Cake Plate**
125. Stretch W - 11" Ftd. Floral & Optic Cake Plate - Rarity
126. **Stretch Teal - 11" Ftd. Floral & Optic Cake Plate - Super**
127. Red - 5¼" No Pattern Rose Bowl
128. **Stretch Vas - 6", 8-Sided Little Plate**
129. Stretch Vas - 10", 12-Panel Plate
130. **Stretch Red - Imp. 15", 14 Panel Optic Charger - WOW!!**
131. Celeste Blue - Stretch 9" ICS Tree Bark Base Bowl
132. **Red - No. 603 Stretch 3 Ft. Crimped Bowl - Plate 135**
133. Stretch IG - Twin Dolphins Fan Vase
134. **Stretch Tangerine - Twin Dolphins Fan Vase**
135. Stretch Smoke - 10¼" Tall, No. 447, Hdl. Basket
136. **Stretch Celeste - 4½" Round Sherbet**
137. Stretch Celeste - 6¼", No. 847 Melon Rib Bowl
138. **Stretch Pink - 6½" Melon Rib, No. 857, Giant Rose Bowl**
139. Stretch Pink - U.S. Glass Cheese & Cracker Set
140. **Stretch White - U.S. Glass 8" Round Open Works Bowl**
141. Clam - 8" Round Imp. Star Med. Bowl
142. **Clam - 11" Rd., Ftd., Lustre Rose Bowl - Unusual w/Plain Int.**
143. Clam - 9½" ICS Cherry Chain Bowl
144. **Clam - 8¾" Imp. Octagon Bowl - Scalloped Edge**
145. Clam - 9", 6-Ruffle Orange Tree Bowl
146. **Clam - 5" Frosted Block Rose Bowl**
147. Clam - 7½", 8-Ruffle Frosted Block Bowl
148. **Clam - 8¾" Frosted Block Plate**
149. Clam - 6" Tall Star Med. Ped. Vase
150. **Clam - 9¼" Star Med. Plate**
151. Smoke - 7¼" Frosted Block Plate w/Etched Int. in Center, B.B.
152. **Smoke - 6" Star Med. Ped. Vase**



323



188



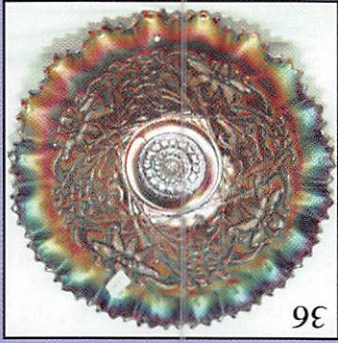
211



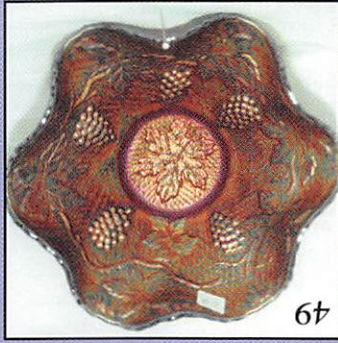
315



228



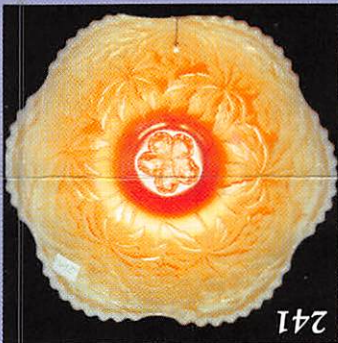
36



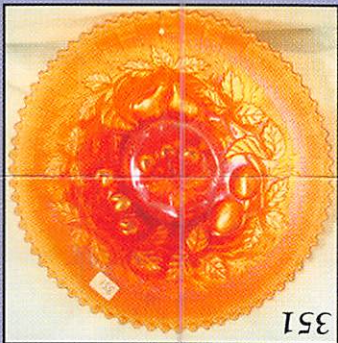
49



217



241



351



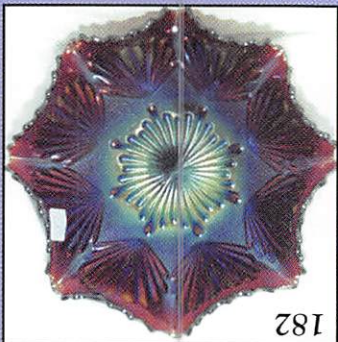
190



238



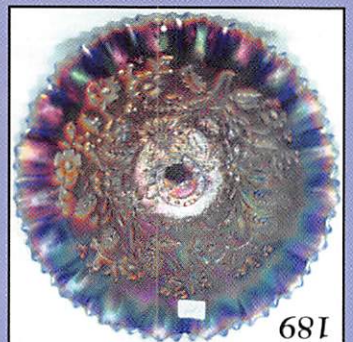
214



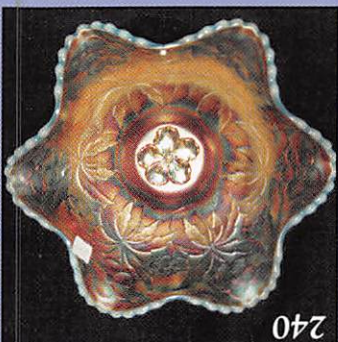
182



56



189



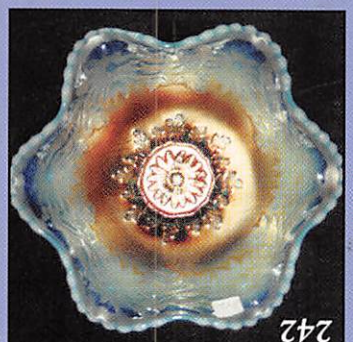
240



205



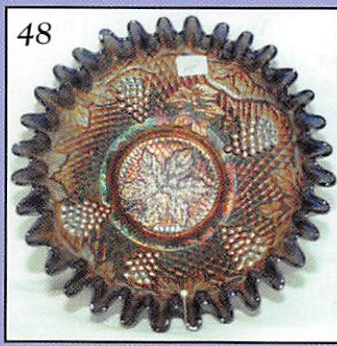
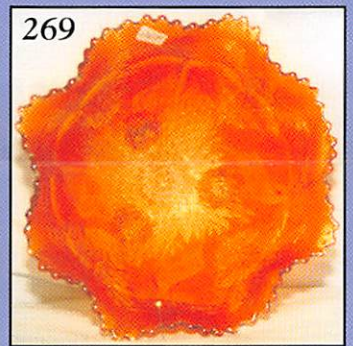
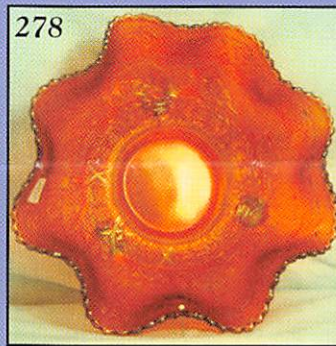
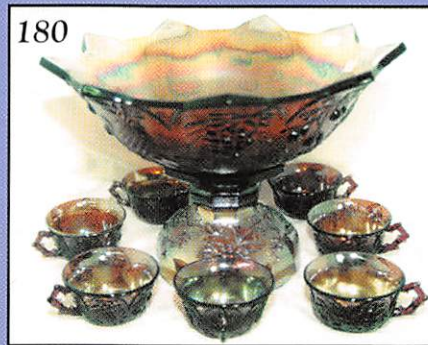
104



242

153. W - N Scorn & Burr Punch Bowl - Base Only - Lots Pinks & Blues
154. W - 9", 3 in 1 Crimped Fanciful Low Bowl - Very Pretty
155. 7" Low Ruffle Grapevine & Lattice Plate or Bowl? - Great Irid
156. W - Beautiful 9", 8-Ruffle Double Stem Rose Bowl
157. W - Great N Fine Cut & Roses Ftd. Candy dish - Normal Feet
158. W - 9" Low 8-Ruffle Fanciful Bowl - Blue Highlights
159. W - Ftd. Orange Tree Spooner w/Gold Trim
160. W - 9" N Peacocks Rib Back Plate
161. W - 8 3/4", 6-Ruffle Orange Tree Bowl
162. W - 9", 6-Ruffle Leaf Chain Bowl
163. W - Great Dahlia Cream Pitcher - Gold Trim
164. W - Question Mark Stem Bon Bon - Lots Blue Highlights
165. G - 9" 5 pt. Ftd. Flat Grape & Cable Plate
166. Beautiful PM - PCE N Strawberry Bowl w/Plain Ext.
167. M - 9 1/2" Collar Base Peacock & Grape Plate - Real Beauty
168. P - Imp. Grape Carafe - Multi Elec.
169. Lav. - Imp. Grape Carafe - Multi Elec.
170. G - 8 1/2" Fostoria Brocaded Palms Fan Vase
171. G - Extra Nice, 9", 3-Fruits Basketweave Plate
172. G - Extra Nice, 9", 3-Fruits Smooth Ext. Plate
173. Soft M - 9 1/4" Fenton Holly Plate - Stretch Golds & Pinks
174. M - 9 1/2" Fenton Holly Plate - Stretch Blues & Pinks
175. M - 7 1/4" Wild Strawberry N Handgrip Plate - Pumpkin Irid.
176. M - 6 1/2" Imp. Grape Plate - A or B
177. M - 6 1/2" Persian Med. Plate w/Orange Tree Ext.
178. Outstanding Radium M - 6 1/4" Star & File Plate - Plain Int.
179. Yellow - Westmoreland Leaf Swirl Ruffle Compote
180. Rare A - Westmoreland Fruit Salad, 9 pc. Punch Set
181. M - 10" Rd, Scalloped Mikado Compote
182. P - Imp. 8", 8-Ruffle, Shell & Sand Bowl - Super Irid.
183. Pinkish M - 8 1/2" N Ruffled Ftd. Poinsettia & Lattice Bowl - Pastel
184. Scarce A - N Blossom Time Compote
185. B - Flat 10" Fenton Holly Plate
186. Soft P - 9 1/2" Scroll Embossed Plate - Rich Elec. Irid.
187. Scarce M - 8" ICS Coral Bowl - Beautiful Example
188. M - 9" Stipple Good Luck Plate w/Rib Ext. - Great Find
189. B - Thin Base, PCE, Stipple Good Luck Bowl - Rib Ext. - Extra Nice
190. Pumpkin M - N Ruffled Good Luck Bowl
191. Aqua - Ball Ftd. 6" Rnd. Lotus & Grape Vt. Bowl - Scarce Color
192. G - 6 1/2" Rd. Flared Pine Cone Bowl - Fenton
193. M - Zipper Stitch Decanter w/Clear Faceted Stopper
194. M - Imp. Flute & Cane Wine Glasses - A, B, C or D
195. M - Imp. Star & File Ice Cream Sherbet Dish - Stemmed
196. M - 8 1/2", 3 in 1 Concord Bowl
- 196A. M - Zipper Stitch Wine Glass - Int. Crack
197. Soft B - Fircone Tumbler - Very Rare
198. W - Cosmos/Cane Tumbler - Beautiful Example
199. Honey Amb. - Cosmos/Cane Tumbler - Dandy
200. M - Banded Diamond Tumbler - Great Find
201. M - Palm Beach Tumbler
202. M - N Dandelion Tumbler
203. PM - PCE Stippled Peacocks Bowl - Rare & Nice
204. P - PCE Peacocks Bowl - Old Favorite
205. G - MIBG - Beautiful Radium Mayan Bowl - 8" ICS
206. G - MIBG 10", 6-Ruffle Holly Whirl Bowl - Satin Irid.
207. A - MIBG 10", 6-Ruffle Holly Whirl Bowl - Satin Irid.
208. G - MIBG 10", 6-Ruffle Holly Whirl Bowl - Radium Irid.
209. M - MIBG 10", 6-Ruffle Holly Whirl Bowl - Radium Irid.
210. G - MIBG 9" Round Scalloped Rays/Ribbons Bowl - Bluish Radium
211. G - MIBG 10", 6-Ruffle Whirling Leaves Bowl - Blues and Pinks
212. G - MIBG 10", 6-Ruffle Whirling Leaves Bowl - Pinks and Golds
213. PM - MIBG 9 1/4", 6-Ruffle Whirling Leaves Bowl
214. A - MLBG 9 1/4" Round Flared, Lge. Mould Peacocks Bowl - Super Radium
215. G - MLBG 10 1/2" Lge.. Mould Peacock & Urn Bowl - Super Radium
216. G - MLBG 10 1/2" Lge.. Mould Peacock & Urn Bowl - Satin
217. A - MLBG 8 1/4" Mystery Peacock Bowl - Radium Scarce
218. A - MLBG 9 1/2", 6-Ruffle Primrose Bowl - Radium
219. PM - MLBG 9 1/2", 6-Ruffle Primrose Bowl - Radium
220. G - MLBG 9 1/2", 6-Ruffle Primrose Bowl - Beautiful Satin
221. M - MLBG 9 1/2", 6-Ruffle Primrose Bowl - Satin
222. G - MLBG Peacock Tail, Vt. Ruffled Satin
223. G - MLBG 6", 3 in 1 Edge Black Wreath Bowl - Satin
224. M - MLBG 8 1/4" ICS Black & Wreath Bowl - Radium
225. A - MLBG 8 1/2" Rd, Low, Flared Black & Wreath Bowl - Satin
226. A - MLBG 9 1/4", 6-Ruffle Nesting Swan Bowl - Satin
227. M - MLBG 9 1/2", 6-Ruffle Nesting Swan Bowl - Radium
228. A - MLBG 8 1/2", 6-Ruffle Big Fish Bowl - Radium
229. G - MLBG 10 1/4", 3 in 1 Edge Collar Base Fleur De Lis Bowl
230. M - PCE N Grape & Cable Bowl - BW Ext. - 8 1/2"
231. A - Collar Base N 3-Fruits Ruffle Bowl - BW Ext - 8 1/2"
232. P - 7 1/2", 6-Ruffle Smooth Ray Bowl w/Poppy in Collar Base - Ext.
233. M - Blossom/Bands Car Vases w/holders - 2 x \$ - Rare (Pair)
234. PO - 8 1/4" Dugan Single Flower Bowl
235. PO - 7", 10-Ruffle Dugan Single Flower Framed Bowl - Ext.
236. M - 11, 8-Ruffle N Stippled Rays Bowl - Super Beauty
237. M - 10 1/2" PCE N Stippled Rays Salad Shaped Bowl - Pretty
238. PO - 9 1/2", 10-Ruffle Caroline Bowl - Very Pretty
239. M - 8 1/4" Westmoreland Caroline Dogwood Bowl - Scarce Color
240. BO - 8 1/2", 6-Ruffle Westmoreland Cardine Dogwood Bowl - Super
241. MMG - 8 1/2" Westmoreland Cardine Dogwood Bowl - Scarce Beauty
242. BO - 8 1/2" Daisy Wreath Bowl - Super
243. Moonstone - 9" Westmoreland Wreath Bowl - Neat Color
244. Aqua - 8" Round Smooth Rays Bowl
245. A - 9 1/2", 6-Ruffle Cosmos VT. Bowl - Radium


246. M - 8" ICS Windflower Bowl - Neat Shape
247. M - 7/4" Dugan Seagulls Bowl
248. M - Dugan Beaded Basket
249. M - 5/4", 6-Ruffle Twins Bowl
250. M - LBJ Hat Ashtray
251. M - 8" ICS Collar Base Peacock & Grape Bowl
252. B - 9", 8-Ruffle Collar Base Peacock & Grape Bowl
253. M - 9", 8-Ruffle Collar Base Peacock & Grape Bowl
254. G - 8 1/2" Tight CRE Fenton Coin Dot Bowl
255. A - 8" Tight CRE Fenton Thistle Bowl
256. B - 8 3/4", 6-Ruffle Fenton Thistle Bowl - Beautiful
257. M - 6-Ruffle Pony Bowl
258. B - N Leaf/Beads Rose Bowl
259. AO - N Leaf/Beads Rose Bowl
260. AO - Stippled Dandelion Mug - Super Butterscotch
261. AO - Hearts/Flowers Compote - Super Butterscotch - Base Nick
262. Beautiful Radium G - N Fern Compote - Daisy/Plume Ext.
263. IB - N Fine Cut & Roses Rose Bowl - Feet Roughness
264. P - N Fine Cut & Roses Rose Bowl - Feet Roughness
265. B - Fenton Flowers or Orange Tree Rose Bowl
266. P - Grape Delight Ftd. Rose Bowl - Elec.
267. M - N Leaf/Beads Rose Bowl
268. B - 9 1/2" Ball Ftd. 8-Ruffle Chrys./Windmill Bowl - Great
269. Pumpkin M - 9" Deep 8-Ruffle Ball Ftd. Stag/Holly Bowl
270. B - 11" Sq. 8-Ruffle Ball Ftd. Stag/Holly Bowl
271. Radium B - 10 1/2" Ball Ftd. ICS Stag/Holly Bowl
272. M - N Peacock/Fountain 10 1/2" Ftd. Fruit Bowl
273. M - 10 1/2" Persian Med., Ftd., Grape/Cable Ext. Fruit Bowl
274. Super B - 11" Sq. 8-Ruffle Ball Ftd. Two Flowers Bowl
275. M - 10 1/2" ICS Ball Ftd. Two Flowers Bowl - Extra Nice
276. G - 7 1/2" Round Spat. Ftd. Two Flowers Nut Bowl - Rare Shape & Color
277. Pumpkin M - 5 1/2" Spat. Ftd. Two Flowers Rose Bowl - Scarce
278. Pumpkin M - 10 1/4" Sq. 8-Ruffle Ball Ftd. Little Fishes Bowl - Super
279. PO - Ball Ftd. 9" Dugan Cherries Bowl - Plain Interior
280. P - Imp. Lustre Rose Spooner - Multi Elec.
281. P - Imper. Lustre Rose Creamer - Super Elec.
282. P - Imper. Lustre Rose Sugar Bowl w/Lid - Base Cracked
283. P - Imper. Lustre Rose Butter Dish w/Lid - Rim Chips
- ★284. Fantastic P - Lustre Rose Pitcher / 6 Tumblers - Awesome Set
285. W - Dianthus Enameled Floral 7-Piece Tankard Water Set
- ★286. Ultra Rare W - Dahlia, 7-Piece Water Set w/Blue Stained Dahlias
287. M - Flashed 15" Enamel Decor German Stein - Unusual
288. B - 9", 8-Ruffle Collar Base Peacock/Grape Bowl
289. Extra Nice P - 3-Fruits Medallion Spat. Ftd. Bowl
290. G - 8 1/2" N Ruffled Strawberry Bowl
291. M - Dugan Vintage Banded Water Pitcher - Scarce and Nice
292. M - N Peacock/Fountain Punch Cups - Choice: A, B or C
293. M - Vineyard Tumbler - Heat Flash in Rim
294. M - Top, Clear Base, 8" Twigs Bud Vase
295. B - 9" 3 in 1 Edge Fenton Holly Bowl
296. Scarce W - N Collar Base 9" Ruffle Stippled 3-Fruits Bowl - Tip Chip
297. M - 7", 6-Ruffle CRE Fenton Holly Bowl
298. P - 7", 8-Ruffle Heavy Grape Bowl - Super Elec.
299. M - Dugan 6" Summer Days Vase
300. G - MLBG 7" Blackberry Wreath Bowl - Chips On Edges
- 300A. Elec B - N Fruits/Flowers Bon Bon
- 300B. Lav. 8 1/2" Florentine Candlestick
- 300C. P - 15 1/4" Swing Spearhead Diamonds Vase
- 300D. Non-Irid - P - Hatpin
- 300E. BA - Scarab Shell Carnival Hatpin
- 300F. G - Non-Irid - Beetle Hatpin
- 300G. BA - Oval Elec Blue Irid Hatpin
- 300H. Lav. Suns Up - Great Hatpin
- 300I. BA - Lge.. Round ? Hatpin - Elec. Blue Irid.
301. Amberina - 7 1/4", 8-Ruffle Acorns Bowl
302. Red Slag - 6 1/2" Rd. Acorns Bowl
303. Aqua - 7" ICS Acorns Bowl
304. B - 7 1/2", 8-Ruffle Acorns Bowl
305. M - 7 1/2", 8-Ruffle Acorns Bowl
306. M - 8-Ruffle Fenton Holly Bowl
307. B - 7", 6-Ruffle Collar Base Horse Medallion Bowl
308. M - 7 1/4" Horse Medallion Plate
309. G - 8" ICS Leaf Chain Bowl
310. M - 9", 3 in 1 Edge Fenton Vintage Bowl
311. M - 7 1/4" Low Ruffle Fenton Vintage Bowl
312. B - 8" ICS Fenton Peacock at Urn Bowl
313. Super PM - 9" PCE N Peacocks Bowl - Extra Nice
314. M - Flashed 10 1/4" Rolled Rim Heisey Rayed Console Bowl
315. AO - 8 1/2" N Grape/Cable Vt, PCE Bowl - Rare - Manuf. Flaw
316. Great G - 9" Sq. 8-Ruffle Lotus/Grape Bowl
317. AO - N Ruffle Good Luck Bowl - Rare - Minor Tool Marks
318. Elec. B - 8 3/4" Ruffled N Good Luck Bowl - Super Pretty
319. Pumpkin M - PCE N Good Luck Bowl
320. M - Ruffled Stippled N Good Luck Bowl - Way Above Average
321. Super B - Ruffled Stippled N Good Luck Bowl - Way Above Average
322. Multi Elec. P - Flat 9" UN Good Luck Plate w/BW Exterior
323. Lime VO - 8 3/4", 3 in 1 Edge Collar Base Dragon/Lotus Bowl - Rare Find
324. Pinkish M - 8 3/4", 8-Ruffle Collar Base Dragon/Lotus Bowl
325. Near Cobalt B - 8 1/4" ICS Dragon/Lotus Bowl
326. B - 8 1/4", 8-Ruffle Dragon/Lotus Bowl - Collar Base
327. G - 8", 8-Ruffle Sp. Ftd. Dragon/Lotus Bowl
328. B - 8" Tight CRE Captive Rose Bowl
329. Great G - 9", 6-Ruffle Captive Rose Bowl
330. Extra Nice G - 8 1/2", 3 in 1 Edge Rose Bowl
331. G - 9 1/4" Captive Rose Plate - Rare & Above Average
332. B - 8", 3 in 1 Edge Heart/Vine Bowl
333. A - 7 1/4" Tight CRE Heart/Vine Bowl
334. Beautiful B - 9" CRE Collar Base 10 Mums Bowl
335. Super Red - 9" Ruffled Fenton Holly Bowl - 1/2" Chip on Marie
336. Scarce A - 8 1/2" Rd. Fenton Holly Bowl
337. Scarce A - 9", 3 in 1 Edge Holly Bowl



338. B - 9", 3 in 1 Edge Fenton Holly Bowl
 339. Rich Amber - 9" Ruffled Fenton Holly Bowl
 340. Amber - 5 1/4" Round Fenton Stippled Rays Bowl
 341. M - Ruffled 9 1/4" Fenton Holly Bowl - Very Pretty
 342. Scarce A - 9 1/2" 3 in 1 Edge Little Flowers Bowl
 343. Deep G - 8" ICS Orange Tree Bowl - Great Find
 344. Beautiful G - Ruffled Peacock/Grape Spat. Ftd. Bowl
 345. M - 7 1/4" ICS Peacock/Grape Spat. Ftd. Bowl - Pretty
 346. Dark G - 8" Low ICS Peacock/Grape Spat. Ftd. Bowl
 347. B - N Fruits/Flowers Bon Bon - Multi Elec.
 348. Outstanding P - N Grape/Cable Butter Dish w/Lid
 349. Outstanding P - N Grape/Cable Sweet Meat Compote w/Lid
 350. P - 9" N Grape/Cable Plate - Beautiful Example
 351. M - 9" N Beautiful Flat 3-Fruits Plate
 352. Very Scarce Beautiful G - N 8 1/4" Thin Rib Jester Cap Vase - Minor Heat Separations
 353. G - Imp. Loganberry Vase
 354. Amber Imp. - Logan Berry Vase - Outstanding Example
 355. P - 8, 6-Ruffle, Dugan 6-Petals Bowl - Super Duper
 356. B - 9" Fanciful Plate - Scarce Color
 357. W - 9 1/4" Fenton Holly Plate - Yellows, Blues, Pinks
 358. P - 9" Outstanding N Peacocks Plate - Ribbed Ext.
 359. P - 8-Ruffle Rose Show Bowl - Way Above Ave. Irid.
 360. Scarce N B - 7 1/2", 6-Ruffle Fruits/Flowers Bowl
 361. Ice G - 8-Ruffle N Hearts/Flowers Bowl
 362. Beautiful M - 9" CRE Peacock Tail Bowl - Starred Base
 363. Ice B - Memphis Punch Cups - 4 x \$
 364. M - 8 1/4" Tall Wine & Roses Pitcher
 365. M - Wine & Roses Stemmed Goblets - A, B or C
 366. M - Bouquet (Bulbous) Water Pitcher/6 Tumblers
 367. M - Hobstar/Band, Flat Bottom Water Pitcher - Rim Chipped
 368. M - 7-Piece Heavy Iris Tankard Water Set
 369. Beautiful M - (Bulbous) Inverted Coin Dot Water Pitcher/5 Tumblers
 370. P - Imp. Windmill Milk Pitcher - Very Scarce Item
 371. M - Imp. Windmill Milk Pitcher
 372. Beautiful Smoke - Star Medallion Milk Pitcher
 373. P - (Bulbous) Wishbone Water Pitcher - Minor Nicks
 374. P - N Dandelion Tankard Water Pitcher - Multi Elec.
 375. M - Imp. Grape Decanter w/8 Stemmed Wines
 376. Crystal Irid - Contemp. Drapery Tankard Pitcher
 377. Smoke - Imp. 9" Ruffle Scroll Embossed Bowl - File Ext.
 378. M - Starlyte Small Light Shade
 379. Crystal Irid - Nuart Coral Shell Elec. Shade
 380. W - Frosty Etched - Electric Shade
 381. W - Frosty Etched Electric Shade
 382. W - Frosty Etched Electric Shade
 383. Beautiful M - 10 1/4" Imp. Beaded Bulls Eye Vase - 6" Flared Top
 384. M - 10 1/2" Diamond Point Column Vase
 385. M - Handled Star/File Celery Vase
 386. M - 5 1/2" Squatty Diamond Point Column Vase
 387. RARE M - Imp. Zipper Loop Finger Lamp - All Orig. 4 1/2" - WOW!
 388. M - 7 1/2" Morning Glory Vase
 389. M - 9 1/2" Rustic Vase
 390. M - 8" handled Vase - Rim Nicks
 391. Russet - 11 1/4", 4 Pillars Vase
 392. M - 10" Target Vase
 393. M - 8 1/4" N Tree Trunk Vase
 394. M - 6" European Heavy Prisms Vase - Extra Nice Color
 395. B - 9 1/2" Flute Vase - Minor Nicks
 396. BA - 8 3/4" Lined Lattice Vase - Multi Elec.
 397. B - 10" Rustic Vase
 398. G - 8 1/4" Imperial Mid Size Ripple Vase - 5 1/2" Top - 3 1/4" Base
 399. P - 11 1/2" Spiral Vase - Unusual Beauty
 400. B - 10" April Showers Vase
 401. B - 13" April Showers Vase
 402. P - 15" MLBG or Rustic Variant Vase
 403. P - 6 1/2" Imp. Heavy Grape Bowl - Multi Elec.
 404. P - 4 3/4" Imp. Heavy Grape Bowls - 4 x \$
 405. Smoke - 7 1/2" Rnd. Imp. Star Medallion Bowls - A or B
 406. M - 7 1/2" Rnd. Imp. Star Medallion Bowl
 407. C - 7 1/2" Rnd. Imp. Star Medallion Bowl
 408. M - 9", 8-Ruffle Imp. Grape Bowl
 409. G - 8" Imp. Heavy Grape Plate
 410. Outstanding P - 7 1/4" Rnd. Imp. Ftd. Double Dutch Windmill Bowl
 411. M - 9" Flared Imp. Lustre Rose Bowl
 412. Smoke - 9" Imperial Lustre Rose Bowls - A or B
 413. M - Orange Tree Mugs - A, B or c
 414. G - Helios 8" Imp. Lustre Rose Bowl
 415. Clam - 10 1/2", 8-Ruffle Collar Base Imp. Rose Bowl
 416. Amberish - 10 1/4" Round Flared Ftd. Imp. Lustre Rose Bowl
 417. P - 8", 6-Ruffle Imp. Lustre Rose Bowl - Multi Elec.
 418. Amber - 8 3/4", 8-Ruffle Imp. Lustre Rose Bowl
 419. P - 9" Beautiful Imp. Lustre Open Rose Plate - 1/2" Chip on Top Marie
 420. Amber - 8" Rnd. Imperial Lustre Rose Bowls - A, B, C or D
 421. P - 9", 8-Ruffle Imp. Grape Bowl - Elec. Beauty
 422. M - Oval Imper. Pansy Celery Tray
 423. Soft P - 9", 8-Ruffle Imperial Pansy Bowl
 424. P - 8" Rnd. Acanthus Bowl
 425. P - 9" Beautiful 8-Ruffle Diamond Lace Bowls - A or B
 426. P - 8 3/4" Rnd. Diamond/Lace Bowl
 427. G - 7" Imp. Grape Bowl - Silvery
 428. P - 8 3/4", 10-Ruffle Dugan Apple Blossom Twig Bowl
 429. M Flashed - Rolled Salt/Pepper Shakers
 430. M Flashed - 11 1/2" Oval Studs Trays - A or B
 431. Lime - Imp. Grape Wine Glass - Cracked
 432. M - Crackle Candy Dish / Lid
 433. PO - 11", 6-Ruffle Ski Star & Compass Bowl
 434. M - 7", 6-Ruffle Fish Scale/Beads Bowl
 435. G - 8 3/4", 3 in 1 Edge Smooth Ray Bowl
 436. Yellow Amber - Westmoreland Lg. Ftd. Shell Dish
 437. M - 9", 8-Ruffle Moonprint Bowl
 438. M - Overlay Vaseline - Fenton Peacock/Urn Compote
 439. RARE P - 8 1/4", 8-Ruffle Dragon/Lotus Bowl - Silvery & Worn
 440. M - 3 1/2" Squatty Big BW Vase or Fruit Bowl Base
 441. Aqua - Pansy Spooner - Imper. Silver Irid.
 442. B - 5 1/4" Rnd. Fenton Vintage Bowl - Silvery
 443. Aqua - Imp. Pansy Nappy - Scarce w/Silver Irid.
 444. PO - 9", 10-Ruffle Double Stem Rose Bowl
 445. M - 8" Rnd. & Flared Hattie Bowl - Chipped Marie
 446. PO - 9" Dugan Ski Star/Compass Hand Grip Plate
 447. M - 10" Oval Undertray - Pattern Unknown
 448. Black A - Non-Irid. Faceted Hatpin
 449. Black A - Irid. - Flash Spearpoint Hatpin
 450. Black A - Beaded Hatpin

- _____ 451. M - 6 1/4" Rnd. Star Spray Bowl - Marie Chipped
- _____ 452. M - 9 1/4" Lge. Orange Tree Ftd. Master Bowl
- _____ 453. A - Stork in Rushes 2-Sides Up Whimsey from Tumbler
- _____ 454. A - Westmoreland Strutting Peacock Cream/Sugar w/Lids
- _____ 455. M - Colonial Lemonade Mugs - 6 x \$
- _____ 456. M - Wind Flower Nappy
- _____ 457. M - 10 1/2" Cosmos VT Bowl
- _____ 458. M - 8 1/2" Collar Base Peacock & Grape Bowl - Nicked
- _____ 459. G - 6 1/2" Near Cut Strawberry Bowl
- _____ 460. G - N 7 1/2", 4-Sides Up Beads Bowl
- _____ 461. RARE G - N Dandelion Tankard - Super, but Cracked Around Handle
- _____ 462. P - Outstanding N Oriental Tankard - Cracked Around Handle
- _____ 463. Super Ice B - N Raspberry Water Pitcher - Cracked Around Handle
- _____ 464. P - Fluffy Peacock Water Pitcher - Cracked Around Handle
- _____ 465. M - Blackberry Block Tankard - Cracked Around Handle
- _____ 466. M - Heavy Iris Tankard - Cracked Around Handle
- _____ 467. M - Heavy Iris Tankard - Cracked Around Handle
- _____ 468. P - RARE - Greek Key Water Pitcher - Cracked Around Handle
- _____ 469. W - Floral/Grape Water Pitcher - Base Crack
- _____ 470. Superior Smoked - Imp. Poppy Vase - Lge. Crack
- _____ 471. PO - 10 1/2", 8-Ruffle Jeweled Heart Bowl - Chipped
- _____ 472. G - Orange Tree Loving Cup - Great, but Chips/Nicks
- _____ 473. Elec. P - Grape/Cable Perfume Bottle - Base Cracked - Stopper o.k.
- _____ 474. Rare Rd - Fenton Fern Hat - Base Chips
- _____ 475. Rare Outstanding Ice B - N Memphis 2-Piece Fruit Set - Cracked Top & Base
- _____ 476. P - Ftd. N Wishbone Bowl - Tip Off
- _____ 477. M - Kittens Cup - Marie has Lge. Chip
- _____ 478. Rare A - 5 1/4" Ftd. Little Fishes Bowl - Tip Chips
- _____ 479. Rare Aqua or Saph. - 8 1/2" ICS Feather Stitch Bowl - Tip Chip
- _____ 480. B - 3 in 1 Edge 8 1/4" Ribbon Tie Bowl - Chipped
- _____ 481. P - Swan Salt - Interior Crack
- _____ 482. P - 9" N Nippon Ruffle Bowl - Sharp Points
- _____ 483. G - Buzz Saw Perfume Bottle/Stopper - Crack in Handle
- _____ 484. RARE Lav. - MLBG 8 1/4" ICS, Trout/Fly Bowl - Rim Repair
- _____ 485. Dark Ice B - N Drapery Vase - Toe Chips
- _____ 486. P - Iron Cross Mark, Lge. Imp. Stretch Rose Bowl - Base Crack
- _____ 487. M - MLBG - Ruffled Nesting Swan Bowl - Rim Chip
- _____ 488. B - RARE - Fentonia Water Pitcher - Chipped Around Top
- _____ 489. B - 10 1/2" Plume Panel Vase - Top Chipped
- _____ 490. Russet - 9", 4-Pillars Vase - Base Chipped
- _____ 491. G - N Wide Panel Epergne Complete - With Chips
- _____ 492. A - 6 1/2" Davidson Society Advertising Card Tray - Lge. Cinder in Tip
- _____ 493. Celeste B - Concave Diamond Tumbler - Rim Nick
- _____ 494. M - Fluffy Peacock Tumbler - Base Chip
- _____ 495. Smoke - Fashion Tumbler - Rim Chip
- _____ 496. M - Inverted Coin Dot Tumbler - Rim Chipped

**PLEASE READ THE
FOLLOWING MESSAGE!
SPECIAL NOTE BELOW!**

 **SAME DAY - SESSION (2) TWO:
LOTS #497 THRU #650. FOR FREE
LISTING, CALL, E-MAIL, OR WRITE.
ALL ITEMS CONTEMPORARY
CARNIVAL GLASS.**

 **THANK YOU FOR
ATTENDING THE AUCTION**

CARNIVAL GLASS AUCTIONS CALENDAR OF EVENTS

September 30, 2000

Elaine Benedict Fenton Collection & Dragons
Also Ohio Fiesta Collection
at Boonville, MO

Saturday, October 14, 2000

Elaine Benedict Fenton Collection & Dragons
Wichita, KS - ACCGA

November 3 & 4, 2000

Carnival Glass
Northern Estate at Boonville, MO

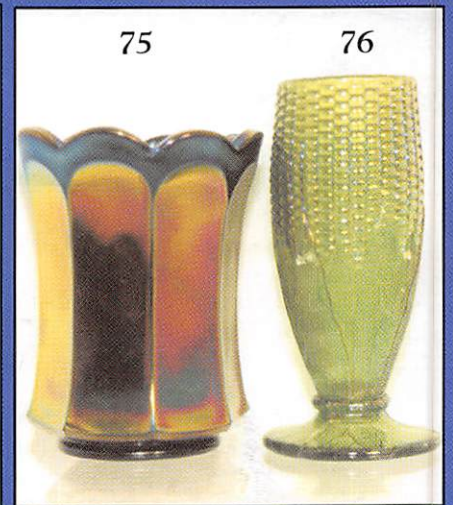
November 18, 2000

Fine Antique Auction at Boonville, MO

January 5 & 6, 2001

Carnival Glass
10th Anniversary New Year Extravaganza
at Boonville, MO

**For Free Color Catalogs & Information Write:
Mickey Reichel
516 Third Street, Boonville, MO 65233-1536
or Call: 660-882-5292 days or
660-882-5283 evenings**



MICKEY REICHEL
ANTIQUE & AUCTION, L.C.
 516 THIRD STREET
 BOONVILLE, MO 65233-1536

PRESORTED
 FIRST CLASS MAIL
 US POSTAGE PAID
 SEDALIA, MO
 PERMIT 217

FIRST CLASS MAIL

RETURN SERVICE REQUESTED

SPECIAL INVITATION TO:

