

CARNIVAL GLASS ESTATE AUCTION

DON McCLIN ESTATE

Saturday, November 4, 2000 9:00 a.m. C.S.T.

Mickey Reichel Antique & Auction L.C.

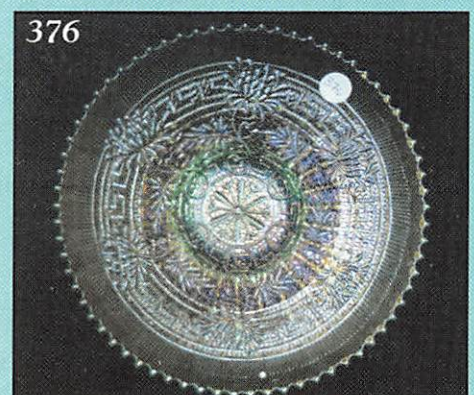
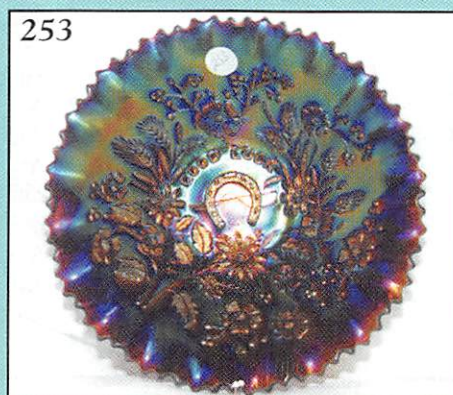
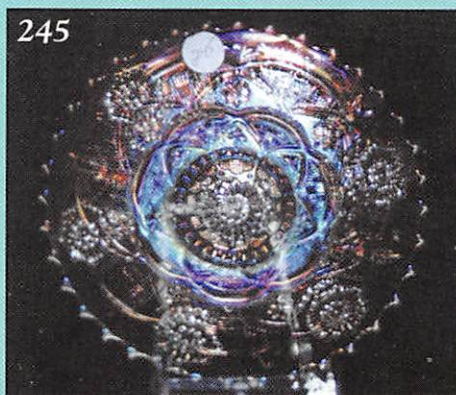
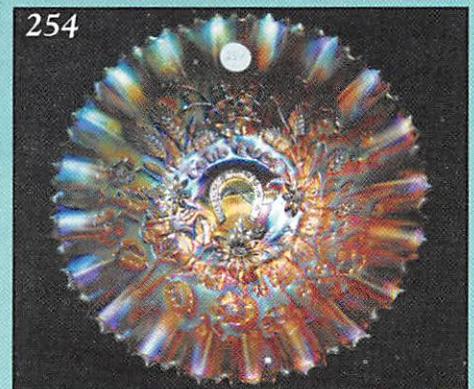
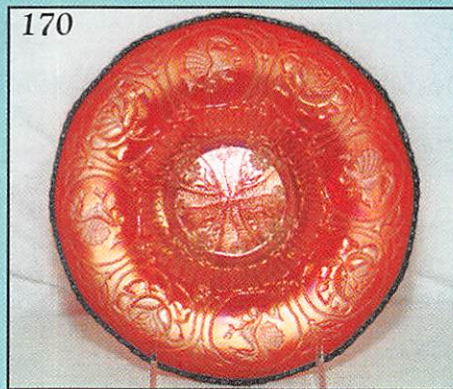
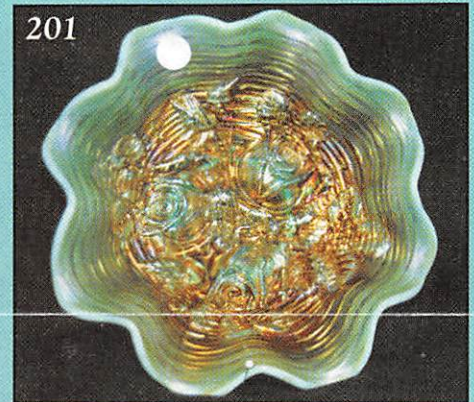
Held Inside the Mickey Reichel Auction Center, Boonville, Missouri

Office: 660-882-5292 • Home: 660-882-5283

Direct e-mail: mreichel@undata.com



NEW WEB SITE ON: <http://www.woodsland.com/carnivalglass>



NO BUYERS PREMIUM

Held Inside the Mickey Reichel Auction Center

1 Mile North of I-70 on Hwy. 5, Exit 101, Boonville, Missouri • 20 Miles West of Columbia, MO on I-70
Preview Friday 12 p.m. - 6 p.m. and 7:30 a.m. - 9:00 a.m. Day of Auction

Make Reservations **EARLY** at one of these local motels:

Days Inn: 660-882-8624 • Comfort Inn: 660-882-5317 • Super 8: 660-882-2900

Auction Consists of Rarity, Great Irid. and Variety

WRITE IN BIDS: If you are unable to attend the auction, we will be happy to accept absentee bids which must be received by THURSDAY, NOVEMBER 2, 2000. Don't Delay.

FOR AUCTION PRICE RESULTS: Send \$3.00 and Large S.A.S.E. to 516 Third Street, Boonville, MO 65233-1536

PLEASE NOTE: There is a **\$5 handling charge for each successful bid which will be added to the selling price** for all write-in bids. This is in addition to the cost of postage, insurance and packing. Your write-in bid will be entered just as if you are present and bidding. **Successful bidders will be notified in 1 to 3 days by the auctioneer** (so be sure to include your **phone number**). Direct mail bids to Auctioneer Mickey Reichel, 516 Third Street, Boonville, MO 65233-1536. Terms: Cash or Check accepted with proper I.D. and Social Security Number and References. Announcements made day of the auction supercede all printed material. Not Responsible for Accidents or Sold Items.

No return on any items once they leave the Auction Center (No Exceptions).****

Call for additional information: 660-882-5292 days or 660-882-5283 evenings before 9:00 p.m.

FAX: 660-882-5292 (evening hours start FAX transmission after beep)

MAIL BIDS: Items are bid on in perfect condition with average or above iridescence OR as listed in the brochures. Bids will not be carried out when damage on an item has been found during the auction.

PEOPLE PRESENT AT AUCTION ARE RESPONSIBLE FOR FINDING ANY PINHEADS, WEAR, SPOTTINESS, MANUFACTURER'S DEFECTS OR ANY OTHER MINOR FLAWS, ETC. *****

NOTE: Read each line, as we have accentuated the type of no particular piece, all are special.

THANK YOU FOR ATTENDING TODAY

1. M - Maple Leaf Tumblers - 6 x \$
2. B - Butterfly and Berry Tumbler
3. P - Heavy Iris Tumbler
4. M - Paneled Dandelion Tumblers - 5 x \$
5. B - Milady Tumbler
6. M - N Waterlily and Cattails Tumbler
7. M - Grapevine & Lattice Tumbler
8. M - Rex Vt. 7 pc. Water Set
9. B - Stork & Rushes Tumblers - 5 x \$
10. Celeste B - Concave Diamonds Tumblers - 4 x \$
11. B - Dugan Peacock at the Fountain Tumblers - 5 x \$
12. P - Maple Leaf Tumblers - 5 x \$
13. M - Stork & Rushes Mug
14. Flashed M - Fisherman's Mug
15. P - Beaded Shell Mug
16. P - N Singing Birds Mug
17. M - Open Rose Water Pitcher
18. M - Daisy & Lattice Tankard Water Pitcher
19. M - N Raspberry Pitcher and 5 Tumblers
20. Rare G - 474 Milk Pitcher - Silver Irid

21. M - Very Scarce Beaded Acanthus Milk Pitcher - Nice Ex.
22. M - Scarce Imp. Flute & Cane Milk Pitcher
23. M - Imp. Poinsettia Milk Pitcher - Very Nice
24. B - 9½" Fenton Orange Tree Plate - Multi Irid.
25. Brick Red - 7½", 8-Flute Fenton Grape & Cable Bowl
26. G - Mlbg. 9½" ICS Large Mold Peacock Bowl - Radium
27. G - 9½" Mlbg. Ruffled Nesting Swan Bowl - Lt. Irid.
28. M - Mlbg. 9½", 6-Ruffle Whirling Leaves Bowl - Super Radium
29. A - Mlbg. 9½", 6-Ruffle Primrose Bowl - Beautiful Radium
30. A - Mlbg. 9¾", 6-Ruffle Rays & Ribbons - Satin Finish
31. G - Mlbg. 9", 3 in 1 Blackberry Wreath Bowl - Satin
32. A - Mlbg. 5¼", 12-Scalloped, Flared, Rd. Holly Sprig Bowl - Radium
33. Cobalt Blue - 8" ICS Dragon and Lotus Bowl
34. M - 9", 8-Ruffle Dragon and Lotus Bowl - Beautiful Pinks & Blues

35. G - 8", 8-Ruffle Spat. Ftd. Dragon and Lotus Bowl
36. M - 3 in 1 Edge Dragon and Lotus Bowl - Scarce Shape
37. G - 11" April Showers Vase
38. A - 9 3/4" N Diamond Points Vase
39. G - 9" N Diamond Points Vase
40. P - 8 1/2" Imp. Ripple Swung Vase
41. B - 9 3/4" Fenton Fine Rib Vase
42. Teal - 8 3/4" JIP Westmoreland Corinth Vase - Scarce Color!
43. M - 6 3/4" Squatty Diamond Point Columns Vase
44. M - 7" Stork Vase
45. Clear Irid. - 5" Dia. 4 1/4" Tall Frosted Block Compote - Scarce
46. A - Mlbg. Hobstar & Feather Punch Cup
47. M - Mlbg. Hobstar & Feather Punch Cup
48. M - N Grape & Cable Pin Dish Whimsey from Punch Cup
49. M - N Lustre Flute Pin Dish Whimsey from Punch Cup
50. M - 6 1/2" Candlestick - 3 3/4" Dia. Base, 6 Flutes
51. G - N Singing Birds Tumblers - A or B
52. M - Rose Band Bon Bon
53. Red - 6-Ruffle Blackberry Spray Hat - Silver & Gold Irid.
54. PM - 8 3/4", 3 in 1 Crimped Fanciful Bowl
55. B - 9 1/2" Fenton Holly Plate - Blues, Purples & Golds
56. M - 9 1/2" Fenton Holly Plate - Pretty Example
57. Blue Opal - Westmoreland 8" Corinth Bowl - Extra Nice
58. Blue Opal - Westmoreland 8 1/2", 6-Ruffle Smooth Rays Bowl
59. Blue Opal - Westmoreland 8 3/4", 6-Ruffle Coin Dot Bowl
60. M - Dugan 3 in 1 Crimped Weeping Cherries Bowl - Very Scarce
61. M - Split Diamond Creamer
62. PO - Estate Creamer
63. M - Sailboats Stemmed Wine
64. M - Curved Star Stemmed Creamer
65. Scarce White - Daisy and Drape Vase - Turned In Top
66. Teal G - 10 1/4" Fenton Flute Vase
67. G - N Grape & Cable Candlestick Holders - A or B
68. PO - 6", 8-Ruffle Wishbone and Spades Bowl
69. G - Mlbg. 6-Ruffle Boutonniere Compote - Satin
70. P - N Blackberry Rays Ruffled Compote (RARE)
71. W - 6" ICS Persian Garden Bowl
72. P - 5 3/4", 8-Ruffle Dugan Ski Star & Compass Bowl
73. Vas. - 7 1/4", 6-Ruffle Leaf Chain Bowl
74. P - N Grape & Cable Powder Dish w/Lid - Minor Lid Roughness
75. M - Imp. Pansy Oval Dresser Tray - Scarce and Nice
76. G - Mlbg. 7", 6-Ruffle Grape Wreath Bowl - Radium
77. Great B - N Round Bushel Basket
78. G - N Round Bushel Basket - Scarce Color
79. Aqua - N Round Bushel Basket w/Light Opal Handles - Very Unusual
80. Scarce G - Mlbg. Diamonds Water Pitcher - Lots of Color!
81. Fantastic P - Imp. 7 pc. Diamond Lace Water Set
82. Great M - 8" Rising Comet Vase
83. B - 18 3/4" Rustic Funeral Vase - 5" Base - 7 1/4" Top - Multi Electric
84. M - 16" Morning Glory Funeral Vase - 5" Base - 6 1/4" Top
85. G - 7 1/2" Rd. Ball Ftd. Fenton Grape & Cable Bowl
86. G - 8" Rd. Ball Ftd. Fenton Grape & Cable Bowl
87. G - 7 1/4", 8-Ruffle Spat. Ftd. Fenton Grape & Cable Bowl
88. B - 7 1/4", 8-Ruffle Spat. Ftd. Fenton Grape & Cable Bowl
89. M - 7 1/4", 8-Ruffle Spat. Ftd. Fenton Grape & Cable Bowl
90. B - 7 1/2" ICS Spat. Ftd. Grape & Cable Bowl - Wear On Grapes
91. B - Fenton Vintage Grape Ftd. Fernery Bowl - Extra Nice!
92. A - Fenton Vintage Grape Ftd. Fernery Bowl - Scarce Color
93. Scarce Dugan B - Grape Delight Ftd. Nut Bowl
94. Beautiful Dugan A - Grape Delight Ftd. Nut Bowl
95. Deep P - Dugan Grape Delight Rose Bowl - Electric
96. G - 9" N Grape & Cable Plate w/BW Ext. - Nice One!
97. A - 9" Spat. Ftd. Grape & Cable Flared Plate - Meander Ext.
98. P - PCE N Grape & Cable Bowl w/BW Ext.
99. Super A - 8 3/4", 8-Ruffle N Grape & Cable Vt. Bowl - Smooth Ext.
100. P - Large 10" Ruffled N Grape & Cable Compote
101. Scarce M - N Stippled Grape & Cable Tobacco Humidor
102. Scarce M - N Stippled Grape & Cable Cracker Jar - Int. Nicks
103. P - N Grape & Cable Butter Dish and Lid - Extra Nice
104. M - N Grape & Cable Butter Dish and Lid - Very Nice
105. Crystal - Grape & Cable Sweetmeat Compote and Lid - Scarce
106. P - Grape & Cable Sweetmeat Compote - Base Only
107. P - N Grape & Cable Whimsey Compote
108. M - N Grape & Cable Water Pitcher - Above Average
109. P - N Grape & Cable Spooner - Very Pretty
110. M - N Grape & Cable Cream Pitcher
111. P - N Grape & Cable Cracker Jar with Lid - A Dandy
112. P - N Grape & Cable Covered Compote
113. G - N 9" Grape & Cable Thumbprint Master Berry Bowl
114. P - N Grape & Cable Thumbprint, 7 pc, Berry Set
115. P - N Grape & Cable Banana Bowl
116. M - N Grape & Cable Banana Bowl
117. M - 10", 8-Ruffle N Grape & Cable Bowl w/BW Ext.
118. M - 11" N 8-Ruffle Stippled Rays Bowl - BW Ext.
119. A - Mlbg. 9 3/4", 6-Ruffle Primrose Bowl
120. M - Fenton Waterlily & Cattail Banana Bowl
121. B - 9", 6-Ruffle Heart and Vine Bowl - A or B
122. Scarce G - 7 3/4" ICS Spat. Ftd. Stag & Holly Bowl
123. M - 7" ICS Fenton Pine Cone Bowl

81



317 & 318



177



143



70



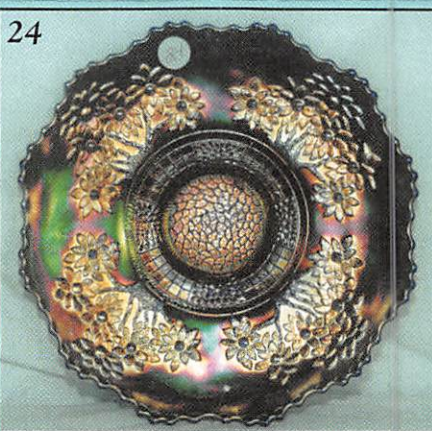
144



176



24



126



178



172



182



- _____ 124. M - 7¼", 8-Ruffle Spat. Ftd. Peacock & Grape Bowl - Nice
- _____ 125. M - 8¾", 8-Ruffle Collar Base Peacock & Grape Bowl
- _____ 126. Deep B - 8" ICS Collar Base Peacock & Grape Bowl - Beautiful
- _____ 127. Olive G - 8¾", 8-Ruffle Fenton Collar Base Dragon & Lotus Bowl
- _____ 128. Deep B - 8½" Collar Base ICS Dragon & Lotus Bowl
- _____ 129. G - 7¾", 8-Ruffle Spat. Ftd. Dragon & Lotus Bowls - A or B
- _____ 130. M - 7¼", 8-Ruffle Spat. Ftd. Dragon & Lotus Bowl

- _____ 163. Clam - 9", 6-Ruffle Fenton Orange Tree Bowl
- _____ 164. M - 9", 8-Ruffle Collar Base Dragon & Lotus Bowl - Lt. Irid.
- _____ 165. W - 8¾" ICS Fenton Holly Bowl - Lots of Blues and Pinks
- _____ 166. M - 9¼" Fenton 12-Sided Three Fruits Plate - Lt. Wear
- _____ 167. G - N 9" Grape & Cable Thumbprint Master Berry Bowl
- _____ 168. G - 10½" April Showers Vase - Peacock Tail Int.
- _____ 169. M - Mlbg. Nesting Swan 6-Ruffle Bowl - Rim Chips
- _____ 170. Cherry Red - Rare 8½" ICS Collar Base Dragon & Lotus Bowl
- _____ 171. G - 9½", 6-Ruffle N Stippled Rays Bowl w/BW Ext.
- _____ 172. Beautiful A - N 8¾", 8-Ruffle Strawberry Bowl - Plain Ext.
- _____ 173. Ice Blue - 8¾", 8-Ruffle Hearts & Flowers Bowl - Plain Ext.
- _____ 174. M - Imp. Lustre Rose Water Pitcher & 4 Tumblers
- _____ 175. A - Mlbg. Feathered Heart Tumbler - Scarce
- _____ 176. P - Dugan Dahlia Ftd. Water Pitcher - Great Find
- _____ 177. B - N Peacock at the Fountain 7 pc. Water Set - 1 Tumbler Chipped
- _____ 178. Scarce Dark B - 9¼", 8-Ruffle, Sq. Shape, Mikado Compote
- _____ 179. M - 10" Rd. Flared Mikado Compote
- _____ 180. P - 6¾" Rd. Imp. Windmill Bowl - Electric
- _____ 181. M - 7" Rd. Imp. Windmill Bowl
- _____ 182. P - 8" Rd. Acanthus Bowl - Super Electric
- _____ 183. M - 9" Fancy Deep Ruffle Acanthus Bowl - Neat Shape
- _____ 184. M - 7¼" Rd. Imp. Shell and Sand Bowl
- _____ 185. P - 9" Oval Pansy Relish Dish - Chip On Marie
- _____ 186. Amber - 9" Ruffled Imp. Pansy Relish Dish
- _____ 187. Lime Green - 7", 8-Ruffle Imp. Heavy Grape Bowl - Unusual
- _____ 188. Amber - 9¼" Imp. Open Rose Plate - Sm. Chips
- _____ 189. Helios G - 9¼" Imp. Scroll Embossed Plate - Radium Silver
- _____ 190. P - 7½", 8-Sided Scroll Embossed Bowl - Plain Ext.
- _____ 191. Rich M - 9", 8-Sided Imp. Octagon Bowl
- _____ 192. P - 5", 6-Ruffle Imp. Zippered Heart - Super Electric
- _____ 193. M - Dugan Circle Scroll Spooner - Dark and Pretty
- _____ 194. M - Imp. Lustre Rose, Collar Base, 7 pc. Berry Set
- _____ 195. M - Scroll Ftd. 9¼" ICS Lustre Rose Bowl - Scarce, Beautiful Shape
- _____ 196. M - Imp. Grape Wine Decanter and 6 Wines
- _____ 197. M - Imp. Grape Wine Decanter and 5 Wines
- _____ 198. Scarce W - N 8-Sided Bushel Basket
- _____ 199. P - Dugan Beaded Basket - Scarce and Pretty
- _____ 200. Lav. - Imp. Grape Ruffled Compote - Extra Nice Item
- _____ 201. AQUA OPAL - 8-Ruffle Rose Show Bowl - Lots of Opal - Pinks and Blues
- _____ 202. A - 9¼", 8-Ruffle N Fruits and Flowers Bowl
- _____ 203. G - 7½", 6-Ruffle N Fruits and Flowers Bowl
- _____ 204. A - 6", 6-Ruffle N Fruits and Flowers Bowl
- _____ 205. G - 8¾" N Strawberry Plate, BW Ext.
- _____ 206. P - N 8¾", 8-Ruffle Strawberry Bowl - BW Ext. - Very Pretty
- _____ 207. M - N 8¾", 8-Ruffle Strawberry Bowl - BW Ext. - Very Pretty

AUSTRALIAN GLASS 131 THRU 147

- _____ 131. M - 8¾" Hand Vase - Left Handed
- _____ 132. M - 7" Dia. Butterfly Bush Compote
- _____ 133. M - 8½" Dia. Butterfly Bush Lg. Compote
- _____ 134. BA - 7¼", 12-Ruffle Butterfly Bush Compote
- _____ 135. Crystal - 5" Dia. Bowl w/M. Collar Base - Choice A or B
- _____ 136. Pink - Crystal w/M - Golden Poppies 4½" Dia. Bowl - A or B
- _____ 137. BA - Banded Diamond Tumblers - Choice A, B or C - RARE
- _____ 138. M - 5½", 8-Ruffle Swans Bowl
- _____ 139. M - 5½", 8-Ruffle Magpie Bowl
- _____ 140. BA - 5½", 12-Ruffle Kangaroo Doe Bowl
- _____ 141. M - 5½", 12-Ruffle Kangaroo Doe Bowl
- _____ 142. BA - 5", 12-Ruffle Kingfisher Bowls - Choice A, B, C or D
- _____ 143. BA - 9", 12-Ruffle Kingfisher Bowl - Super Color!
- _____ 144. BA - 9½", 16-Ruffle Kangaroo Doe Bowl - Super Color!
- _____ 145. M - 9¼", 16-Ruffle Swan Bowl - Radium
- _____ 146. Ultra-Rare 9" BA Lily Vase - 4⅝" Base, 5½" Top - 1 of 2 Known - WOW!
- _____ 147. BA - Diamond Handed Sugar Bowl
- _____ 148. Smoke Flashed - Estate Master Ftd. Salt - 2½" Dia.
- _____ 149. Rich M - Persian Medallion Hair Receiver
- _____ 150. Super Lav. - 9", 10-Ruffle Apple Blossom Twigs Bowl - Pastel
- _____ 151. M - Australian 9½", 12-Ruffle Kookaburra Bowl
- _____ 152. PO - Floral and Wheat Dugan Compote - Puzzle Int.
- _____ 153. PO - 8", 6-Ruffle Six Petals Bowl - Lots of Opal
- _____ 154. PO - Ball Ftd, 6-Ruffle Dugan Cherries Bowl - Pl. Int.
- _____ 155. M - Butterfly and Berry Butter Dish w/Lid
- _____ 156. M - Rd. 10" Collar Base Imp. Lustre Rose Fruit Bowl
- _____ 157. Dk. M - Spat. Ftd. Fenton Grape & Cable 7" Deep Nut Bowl
- _____ 158. Dk. M - Spat. Ftd. Fenton Grape & Cable 7½" Flared Nut Bowl
- _____ 159. M - 7¼", 8-Ruffle Fenton Collar Base Grape & Cable Bowl
- _____ 160. G - 9¼", 3 in 1 Edge Fenton Vintage Bowl - Star Base
- _____ 161. A - 5½" Rd. Little Flowers Berry Dishes - 5 x \$
- _____ 162. G - Fenton Peacock Tail Bon-Bon - 4-Sides Up

208. M - 8 $\frac{1}{4}$ ", 8-Ruffle Collar Base Dragon & Lotus Bowl - Silver Irid.
209. P - Ftd. N 8", 8-Ruffle Rosette Bowl - Extra Nice
210. P - Three Fruits Meander Spat. Ftd. Bowl - Lt. Wear
211. M - N PCE Three Fruits Bowl, BW Ext. - Pretty Shape
212. P - N PCE Three Fruits Bowl, BW Ext. - Multi Irid
213. M - 8 $\frac{1}{4}$ ", 8-Ruffle Collar Base Three Fruits Bowl, N, BW Ext.
214. G - N Ftd. 8-Ruffle Wishbone Bowl - Scarce and Nice
215. P - 7 $\frac{1}{2}$ " N Ftd. 8-Ruffle Wishbone Bowl - Wear in Center
216. M - 7 $\frac{1}{2}$ ", 6-Ruffle N Grape & Cable Bowl - BW Ext.
217. G - 9", 8-Ruffle N Grape Leaves Bowl
218. G - N Dome Base, 8-Ruffle, Greek Key Bowl - Plain Int.
219. G - N Sunflower 8-Ruffle Spat. Ftd. Bowl
220. Scarce Clam - N Sunflower 8-Ruffle Spat. Ftd. Bowl - Pretty Pastel
221. M - N Wild Rose Nut Bowl, Ftd. - Extra Pretty
222. M - N Grape & Cable Breakfast Cream and Sugar - Scarce
223. P - Dugan Holly Berry Tri-Cornered Nappy
224. PO - Dugan Holly Berry Tri-Cornered Nappy - Lots of Opal
225. PO - 9 $\frac{1}{2}$ " Collar Base 6-Ruffle Dugan Cherries Bowl - Jewelled Heart Ext.
226. PO - 9", 3 in 1 Crimped Single Flower Bowl
227. PO - 8 $\frac{1}{2}$ " CRE Tri-Corner Dugan Caroline/Smooth Ray Bowl
228. PO - 7 $\frac{1}{4}$ ", 6-Ruffle Six Petals Bowl - Deep Opal
229. Moonstone - 7 $\frac{1}{4}$ " Westmoreland Corinth Bowl
230. ULTRA RARE M - Fenton Heavy Pineapple Ball Ftd. 10" Fruit Bowl
231. A - 9", 6-Ruffle Fenton Holly Bowl - Scarce Color
232. RARE BA - 9 $\frac{1}{4}$ ", 6-Ruffle Fenton Holly Bowl
233. A - 7 $\frac{1}{4}$ " Tight CRE Fenton Thistle Bowl
234. A - 8 $\frac{1}{4}$ ", 6-Ruffle Fenton Thistle Bowl
235. G - 8" ICS Fenton Autumn Acorns Bowl
236. B - 6 $\frac{1}{4}$ " Rd. Peacock and Dahlia Bowl
237. M - 6 $\frac{1}{4}$ " Rd. Flared Acorn Bowl
238. M - 8 $\frac{1}{4}$ " Tight CRE Ribbon Tie Bowl
239. G - 9", 6-Ruffle Captive Rose Bowl
240. G - 8", 6-Ruffle Fenton Coin Dot Bowl
241. W - 7 $\frac{1}{4}$ " Grapevine and Lattice Ruffled Plate - Frosty
242. B - 5 $\frac{1}{2}$ " Ball Ftd. 6-Ruffle Little Fishes Bowl
243. Super M - 7" Stippled Rays Plate - Scale Band Ext.
244. M - 6 $\frac{1}{4}$ " Persian Medallion Plate - Plain Ext. - Silvery
245. W - 6 $\frac{1}{4}$ " Persian Garden Plate/Pool of Pearls - Scarce Ext.
246. G - 6 $\frac{1}{2}$ " Imp. Grape Plate - Neat Little Guy
247. Honey Amber - 7 $\frac{1}{2}$ " Rd. Cosmos and Cane Lg. Deep Bowl - Scarce
248. M - N 8 $\frac{1}{4}$ ", 8-Ruffle Strawberry Bowl - BW Ext.
249. A - 9 $\frac{1}{4}$ ", 3 in 1 Little Flowers Bowl - Scarce Color
250. A - 10", 6-Ruffle Feathered Serpent Bowl - Honeycomb & Clover Ext. - SUPER
251. PM - 9" Good Luck Plate - Ribbed Ext. - Scarce
252. G - 9" PCE Good Luck Bowl - BW Ext. - Stretch Irid. - WOW!
253. P - PCE Good Luck Bowl - Rib Ext. - Super Multi Electric
254. Super Pastel M - PCE Good Luck Bowl - Rib Ext. - Pinks, Blues, Yellows
255. P - 8-Ruffle Good Luck Bowl - BW Ext. - Thick Rich Irid.
256. A - 8-Ruffle Good Luck Bowl - BW Ext. - Purples and Golds
257. P - PCE Good Luck Bowl - BW Ext. - Super, But One Tip Off
258. M - 8 $\frac{1}{4}$ ", 6-Ruffle Westmoreland Daisy Wreath Bowl - Scarce Color
259. G - Cambridge Inverted Feather Cracker Jar w/Lid - Rim Chip
260. M - Wreath Rose Stemmed Bon-Bon - Rich Color - Great Strike
261. M - Question Mark Stemmed Bon-Bon
262. M - Puzzle Stemmed Bon-Bon or Compote
263. M - N 8-Ruffle Collar Base Three Fruits Bowl - BW Ext.
264. Radium M - 6-Ruffle Pony Bowl
265. G - 6 $\frac{1}{4}$ " Rd. Fenton Vintage Bowl
266. M - 6 $\frac{1}{4}$ " ICS Fenton Lions Bowl - NEAT PATTERN
267. Scarce A - 9" CRE Persian Medallion Bowl
268. Vas. - 7 $\frac{1}{2}$ " Ruffled Acorns Bowl
269. M - Fenton Orange Tree Powder Dish and Lid - Minor Lid Roughness
270. Frosty W - Orange Tree Punch Bowl Top
271. B - Lg. Ftd. Orange Tree Fruit Bowl
272. Rich M - 9", 6-Ruffle Orange Tree Bowl
273. Rich M - 9", 8-Ruffle Sq. Orange Tree Bowl
274. B - Orange Tree Hat Pin Holder - Normal Roughness on Feet
275. M - Orange Tree Mug - 2 $\frac{1}{2}$ " Base, 3 $\frac{1}{4}$ " Top
276. Aqua - Orange Tree Mug - 3" Base, 3 $\frac{1}{8}$ " Top
277. Beautiful B - Ftd. Orange Tree 4-Piece Table Set - Typical Roughness on Feet
278. M - Ftd. Orange Tree 4-Piece Table Set - Typical Roughness on Feet
279. M - 4 $\frac{3}{8}$ ", 6-Ruffle Orange Tree Compote From Wine Glass
280. M - 4 Orange Tree Wine Glasses - 4 x \$
281. Scarce A - Orange Tree Breakfast Creamer
282. Beautiful B - Orange Tree Ftd. 7 pc. Berry Set - Way Above Average Color and Condition
283. B - 7 pc. Little Flowers Rd. Berry Set - Great Find
284. B - 9 $\frac{1}{2}$ " Ruffled Ftd. Butterfly & Berry Master Bowl - One Foot Has Small Chip
285. B - 5 $\frac{1}{4}$ " Rd. Footed Butterfly & Berry Berry Bowls - 2 x \$
286. P - N 7 pc. Acorn Burrs Berry Set - Valuable Find
287. M - N 7 pc. Acorn Burrs Berry Set - Extra Pretty
288. M - N 7 pc. Peacock at the Fountain Berry Set
289. Extra Nice M - 9" N Peacocks Plate - Rib Ext.
290. FANTASTIC PASTEL AQUA OPAL - Ruffled N Peacocks Bowl - Rib Ext. - THE BEST
291. Lav. - (Sowerby) Pineapple 4 $\frac{1}{2}$ " Tall Pitcher - Radium Rarity
292. Lt. Tinted Smoke - Orange Tree Wine w/M Overlay - Unusual Vt.
293. Yellow Amber - Westmoreland Flared Ruffled Leaf Swirl Compote

26



344



343



80



252



287



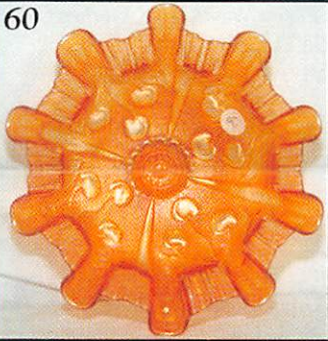
288



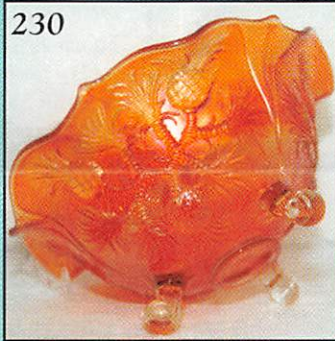
289



60



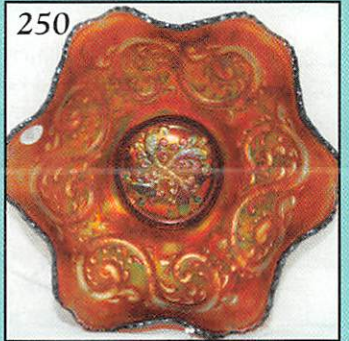
230



230



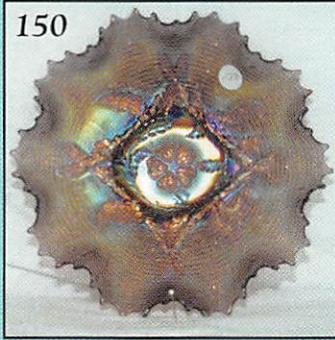
250



100



150



361



77



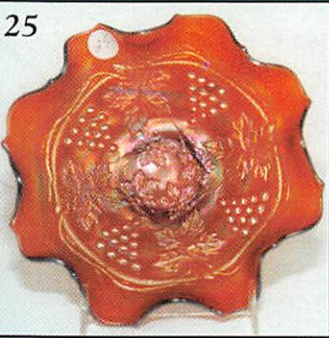
315



358



25




103



294. **G - 7½" Flat Fenton Vintage Plate - Unusual Radium Finish**
295. G - Mlbg. 8" ICS Mayan Bowl - Silver Radium
296. **PO - Scarce Honeycomb Rose Bowl - Nice Example**
297. Vas. IG - Laurel Leaves 4¾" Dia. Compote - Rare & Pretty
298. **M - N Fruits and Flowers Stemmed Bon-Bon - Pumpkin Irid.**
299. Rich M - 5½" Ruffled Ftd. Poinsettia & Lotus Berry Dish
300. **A - 8¾", 3 in 1 Edge Fenton Thistle Bowl**
301. BA - Beaded Carnival Evening Bag - Made In France - A Beauty
302. **M - 10½" Tall Imp. Ripple Vase**
303. Flashed M - 4" Long Piggy Bank
304. **Rich B - Fenton Strawberry Bon-Bon - Beautiful Example**
305. M - Fenton Strawberry Bon-Bon - Dark and Rich
306. **G - Peacock Tail Bon-Bon - 4-Sides Up**
307. Deep B - 8¾" Cherry Circles Lg. Bon-Bon - 2-Sides Up - Great Example
308. **B - Persian Medallion Bon-Bon - 4-Sides Up - Radium Dandy**
309. G - N Paneled Holly Radium Bon-Bon
310. **P - N Butterfly & Stippled Ray Bon-Bon - 4-Sides Up**
311. G - Fenton Butterfly Bon-Bon - 4-Sides Up
312. **M - Lotus and Grape Vt. - Card Shaped Bon-Bon**
313. G - Mlbg. Holly Whirl Bon-Bon
314. PM - N Fruits and Flowers Stemmed Bon-Bon - Beautiful Pastel Irid.
315. **P - N Peacock at the Fountain Butter Dish & Lid - Multi Electric**
316. P - N Peacock at the Fountain Sugar Bowl & Lid - Purples & Golds
317. **Lav. - N Peacock at the Fountain Spooner - Multi Electric**
318. **Lav. - N Peacock at the Fountain Cream Pitcher - Multi Electric**
319. P - N Peacock at the Fountain Punch Bowl Base
320. P - N 5" Rd. Peacock at the Fountain Berry Bowl
321. **AQUA OPAL - 6¼", 6-Ruffle Fenton Blackberry Spray Hat - Rare Find**
322. Beautiful Aqua Opal - N Beaded Cable Rose Bowl
323. **A - N 8-Sided Bushel Basket - Chip On Handle**
324. Scarce A - Ruffled 2-Row Open Edge Blackberry Basket
325. **B - 5¾", 6-Ruffle, 2-Row Open Edge Basket**
326. M - 6", 2-Row Open Edge Basket - 2 Sides Up
327. **M - 6" JIP 2-Row Open Edge Basket - Base Cracked**
328. M - 5¾" JIP 2-Row Open Edge Basket
329. M - 5¾", 6-Ruffle, 2-Row Open Edge Basket
330. **M Flashed - 4¼" Tall Lucky Bank - Barrel Shaped**
331. G - N Daisy and Plume Ruffled Compote - Plain Int. - Pretty Example
332. **B - Ruffled Captive Rose Compote - Edge Peeling**
333. G - Ruffled Wreath Rose Compote
334. **Dark B - 6¾", 6-Ruffle Vintage Grape Compote - Scarce**
335. P - 6½" Ruffled Westmoreland Leaf Swirl Compote
336. **Aqua/Teal - Scarce 7", 6-Ruffle Westmoreland Leaf Swirl Compote**
337. Yellow Amber - 5½" Ruffled Westmoreland Leaf Swirl Deep Compote
338. **M - 6", 8-Ruffle Imp. Columbia Compote**
339. Stretch Celeste B - 8¾" Tall Candy Jar w/Lid - Plate #60 - Bk.
340. **Stretch Celeste B - 8½", 6-Sided Candlesticks - Plate #658**
341. Stretch Russet - Stemmed Bon-Bon - Plate #228
342. Vas. Stretch - 10" Tall Candy Jar w/Lid - Plate #636
343. **M - Imp. Waffle Block 8 pc. Punch Set - Extra Nice Set**
344. **M - Westmoreland Fruit Salad Punch Bowl and Base**
345. M Flashed - 15½" Tall Chalice w/Lid - Tiara Product
346. **GREAT M - 9" Fenton Peacock & Urn Plate - Pumpkin Highlights**
347. **SCREAMING M - RARE 8" Illinois Soldiers and Sailors Home Plate**
348. A - 8¾" Ftd. Flared Louisa Plate - Plain Int.
349. **Scarce Dugan B - 9" Low Ruffled Apple Blossom Twigs Bowl/Plate?**
350. M - Diamond & File 9½" Plate, 2-Sides Up, Radium Finish - Scarce
351. **M - Vintage Fenton Fernery Bowl**
352. M - 7½" Stork ABC Plate - Way Above Average Color
353. **M - Thorn & Thistle Ftd. Nut Bowl**
354. Celeste B - Swan Salt
355. **Pink - Swan Salt**
356. Florentine Vas. IG - Swan Salts - A or B
357. Red - 3½" Tall Stretch 2-Sides Up Hat - Polished Pontil
358. **Super Red Stretch - Mayonnaise & Under Plate Set - Plate #422**
359. Red Stretch - 7" Plate - Polished Pontil
360. **M - Hobnail Soda Gold Large Spittoon**
361. Rare Vas. - Hobnail Soda Gold Large Spittoon
362. **M - Dugan Wreath Rose, Rose Bowl - A or B**
363. M - 5½" Deep Rd. Brockwitz Moonprint Compote
364. **Dark M - Ball Ftd. 10-Ruffle Dugan Cherries Bowl**
365. M - Imp. Pillar Flute Ftd. Breakfast Creamer & Sugar
366. **Clam - Imp. Waffle Block Breakfast Cream & Sugar**
367. P - Imp. Flute Breakfast Cream & Sugar - Chip on Sugar Handle
368. **G - N Lustre Flute Cream & Sugar**
369. Amber - Imp. Pansy Cream & Sugar
370. **M - Butterfly & Berry Ftd. Creamer**
371. M - Butterfly & Berry Ftd. Sugar Bowl w/Lid
372. **M - Butterfly & Berry Ftd. Spooner**
373. P - Imp. Hobstar Creamer - Multi Electric
374. **P - Imp. Hobstar Spooner - Multi Electric**
375. G - Fenton Orange Tree Loving Cup - Radium Gold & Silver
376. **RARE IG - 9" N Embroidered Mums Plate - Great Find**
377. M - Block and Arches 5¾" Tall Pitcher - Very Scarce
378. **M - European Diamond Base Block Sides Cream & Open Sugar?!?**
379. Flashed M - 10-Panel Star Base Cream & Sugar - Pattern?

- _____ 380. Dark M - 6-Panel Star Base Cream & Sugar - Heavy
- _____ 381. M - Ftd. Thorn and Thistle Cream Pitchers - Choice A or B
- _____ 382. M - Split Diamond Creamer
- _____ 383. RARE 5 3/4" Tall, 2 1/2" Base Classic Art Vase - GREAT DETAIL
- _____ 384. M - Beaded Stork & Rushes Tumblers - 5 x 5
- _____ 385. P - N 9" Diamond Point Vases - Choice A or B
- _____ 386. Lt. A - N 9 3/4" Diamond Point Vase
- _____ 387. B - 9 1/2" April Showers Vase
- _____ 388. G - 10 1/4" April Showers Vase
- _____ 389. B - 8" Paneled Diamonds and Bows Vase - Extra Nice Example
- _____ 390. B - 6 3/4" CRE Butterfly & Berry Vase - 4 1/2" Top
- _____ 391. B - 9 1/4" Knotted Beads Vase - 4 3/4" CRE Top - Tiny Nick on Rim
- _____ 392. Deep P - 10 1/4" N Tree Trunk Vase
- _____ 393. B - 9 1/2" Fenton Fine Rib Vase - Base Chip
- _____ 394. A - 8 3/4" Diamond and Rib Vase
- _____ 395. Rich M - 5 1/2" Morning Glory Vase - 3 3/4" Top, 2 1/2" Base
- _____ 396. Dark M - 5" Morning Glory Vase - 3 3/4" Top, 2 3/8" Base
- _____ 397. Dark A - 6 1/2" N Squatty Thin Rib Vase - 3 1/2" Base, 5" Top
- _____ 398. M - 7 1/2" Imp. Swirled Morning Glory Vase
- _____ 399. M - 7" Stork Vase - Super Example
- _____ 400. Radium M - 6" Triands Vt. Vase - 3 3/4" Base, 5" Open Top - Neat
- _____ 401. Dark B - 16 3/4" Fenton Fine Rib Vt. Vase - 12 1/2" Front Height
- _____ 402. Dark B - 16 3/4" Fenton Fine Rib Vt. Vase - 12 3/4" Front Height
- _____ 403. B - 15 3/4" Spearhead & Diamonds Vase - 13" Front Height
- _____ 404. A - Tri-Corner Dugan Leaf Ray Nappy
- _____ 405. M - Tri-Corner Dugan Leaf Ray Nappy
- _____ 406. A - 6 1/4" Scales Plates - Choice A or B
- _____ 407. Smoke - Imp. Tulip and Cane 5 1/4" Sauce - Ruffled
- _____ 408. B - 5 1/2", 6-Ruffle Peacock Tail Hat-Shaped Bowl
- _____ 409. A - Stork & Rushes Punch Cups - 2 x \$
- _____ 410. M - Stork & Rushes Punch Cups - 5 x \$
- _____ 411. P - Memphis Punch Cups - 3 x \$
- _____ 412. B - N Peacock at the Fountain Punch Cup
- _____ 413. G - Imp. Grape Punch Cup
- _____ 414. M - Memphis Punch Cups - 2 x \$
- _____ 415. M - Imp. Grape Punch Cup
- _____ 416. M - Persian Medallion/Wreath Rose Punch Cup - Scarce
- _____ 417. Flashed M - 5 3/4" Tall Basketweave Handled Basket
- _____ 418. Dark M - 4 1/4" Rd. Imp. Heavy Diamond Nappy - First I've Seen
- _____ 419. M - 3" Squatty (Sowerby) Towers Ruffled Vase - 4 1/2" Top
- _____ 420. M - Golden Harvest Wine Glass
- _____ 421. M - Depression Era 2 1/2" Tall Candlestick Holder
- _____ 422. M - Schenley's Golden Wedding Pint Whiskey Bottle - Full Labels
- _____ 423. Radium M - Stork & Rushes w/Lattice Band Tumbler
- _____ 424. M - 2 1/4" Flower Frog
- _____ 425. M - 6-Paneled Star Base Sugar Bowl - Pattern?
- _____ 426. G - Lustre Flute N Breakfast Creamer & Sugar

- _____ 427. G - N Lustre Flute Sugar Bowl
- _____ 428. M - N 4 1/4" Acorn Burrs Berry Bowls - 6 x \$
- _____ 429. P - N 4 3/4" Acorn Burrs Bowl
- _____ 430. A - 9 3/4" CRE Tri-Cornered Smooth Rays Bowl
- _____ 431. G - N 8 1/4", 8-Ruffle Beads Bowl - Beautiful Alaskan Effects
- _____ 432. M - 5 3/4" Imp. Flute and Cane Milk Pitcher - Scarce
- _____ 433. M - Imp. Wide Panel 11" Rd. flared Centerpiece Bowl
- _____ 434. M - Imp. Wide Panel 14 1/2" Underplate for Centerpiece Bowl - Stretch Effect
- _____ 435. Contemporary - Black - 9" Ftd. Stag and Holly Bowl
- _____ 436. Contemporary - G - Signed IG Hosbstar Covered Cracker Jar
- _____ 437. Contemporary - Cobalt B - Signed IG Robins Pitcher w/5 Tumblers
- _____ 438. Contemporary - Aqua Opal - Fenton 7 pc. Cactus Water Set
- _____ 439. Contemporary - P - Fenton Berry Covered Candy Box
- _____ 440. Contemporary - BA - Cherry Blossom Pitcher w/4 Tumblers

 **THANK YOU FOR
ATTENDING THE AUCTION**

CARNIVAL GLASS AUCTIONS CALENDAR OF EVENTS

November 11

Herb Helmreich Estate

November 18, 2000

Fine Antique Auction at Boonville, MO

January 5 & 6, 2001

Make Hotel Reservations NOW!

Booking Up!

Carnival Glass

10th Anniversary New Year Extravaganza
at Boonville, MO

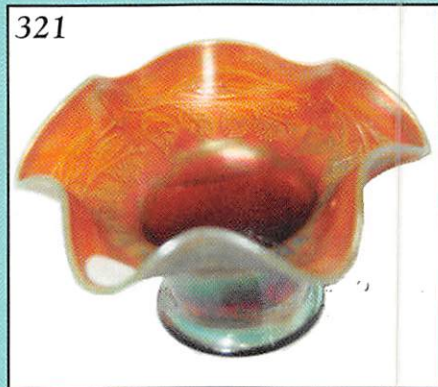
For Free Color Catalogs & Information Write:

Mickey Reichel

516 Third Street, Boonville, MO 65233-1536

or Call: 660-882-5292 days or

660-882-5283 evenings



MICKEY REICHEL
ANTIQUE & AUCTION, L.C.
516 THIRD STREET
BOONVILLE, MO 65233-1536

PRESORTED
FIRST CLASS MAIL
US POSTAGE PAID
SEDALIA, MO
PERMIT 217

FIRST CLASS MAIL

RETURN SERVICE REQUESTED

SPECIAL INVITATION TO:

