

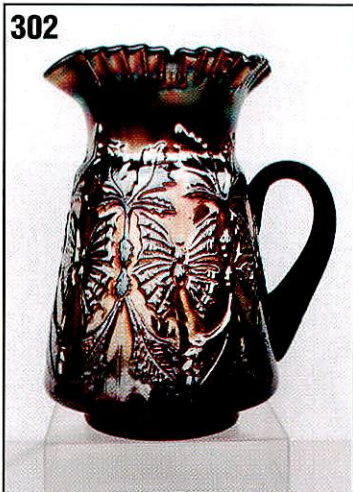
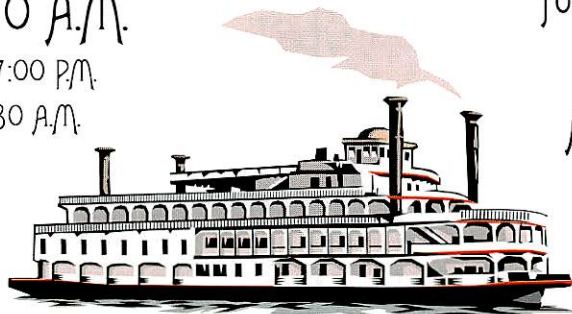
CARNIVAL GLASS AUCTION

with LIVE TELEPHONE BIDDING

Saturday, October 28, 2000
Beginning at 9:30 A.M.

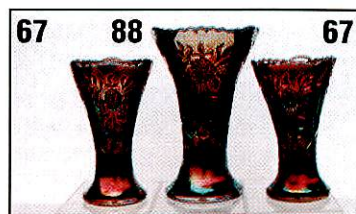
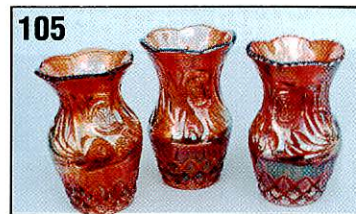
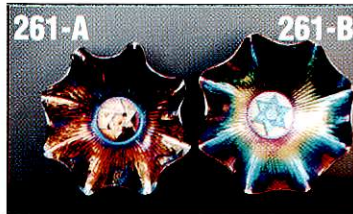
Preview: Friday 5:00 - 7:00 P.M.
and Saturday 8:00 - 9:30 A.M.

Call (800) 325-6351
for Reservations by October 13th
and ask to be put in with the
Ayers Auction Block of Rooms
for a rate of \$69.00+ tax.



The Mark Twain Hotel
225 NE Adams St.
Downtown Peoria, Illinois

(Going East - Take I-74E to Washington St./Adams St. Exit #93B)
(Going West - Take I-74W to Washington St. Exit #93)



Hello Folks...We have a super selection of Carnival Glass from Ohio to offer you at auction. Donald and Bertha Royer, serious collectors for a lot of years, have decided to sell their fine collection and enjoy life a little. They have worked hard at completing some rare sets and have hunted for years to find many of these pieces of glass. Also, we have thrown in some other fine items from around the world. You will have the opportunity to take home with you some of Europe's rarest pieces of Carnival Glass. We are hoping that all of your Champagne Wishes and Carnival Glass Dreams will come true.



CARNIVAL GLASS AUCTION

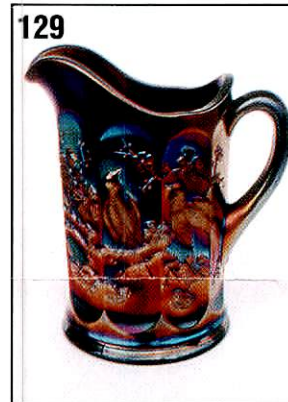
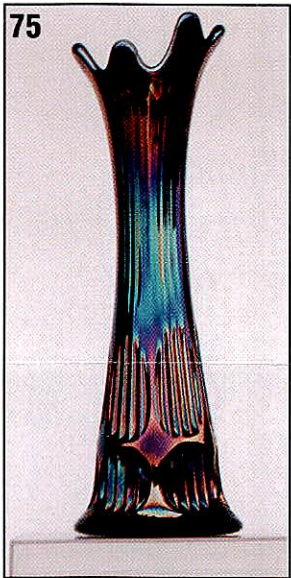
Saturday, October 28, 2000
Beginning at 9:30 A.M.



Presented by:

Ayers Auction Service

Licensed Auctioneer, David L. Ayers,
Illinois Auctioneer License No. 041000583



LIVE TELEPHONE BID AND WRITE-IN BID POLICIES

1. Live Telephone bids can be arranged by sending the numbers of the item(s) and your name, address, home phone number and the phone number where you can be reached on the day of the auction, Sat. October 28, 2000, during the hours the auction will be occurring, CST to David or Amy Ayers.
2. Write-in (Absentee bids will be accepted by sending the numbers of the item(s) desired and the amount bid on each to: Ayers Auction Service, P.O. Box 320, Tremont, IL 61568-0320.
3. All Absentee bids and arrangements to participate in Live Telephone bidding may also be done with David or Amy Ayers over the telephone: (309) 925-3115, or by e-mail to: ayers@dpc.net.
4. There will be a \$5.00 handling charge for each successful absentee bid. Shipping and insurance charges are additional. Be aware, there will be a \$5.00 charge per phone call placed to you during the auction to participate in Live Bidding. This cost is in addition to handling, shipping, and insurance charges. You will be billed for each phone call, even if you are not the successful buyer. We ask that you do not tie up the telephone lines by speaking at length with the staff of the Auction Service prior to the completion of your Live bidding. The staff will have multiple calls to complete and your cooperation is appreciated.
5. All successful bidders will be notified by a phone call from David or Amy Ayers 1-3 days after the auction.
6. If interested in placing an absentee bid or participating in the Live Telephone bidding you must contact David or Amy N.L.T. Monday, October 23, 2000. Bids received after this date may not be carried out.
7. Please place absentee bids in the following increments: \$1 - \$300 use \$5.00 increments; \$300 & up use \$25.00 increments.
8. If you do not receive an item that sold for less than your absentee bid, assume we cancelled your bid because the piece of glass had below average color, manufacture problem, damage, or was not listed correctly.
9. To receive a price list for this auction send \$3.00 and a SASE to the above address. (Make checks payable to Amy Ayers.)

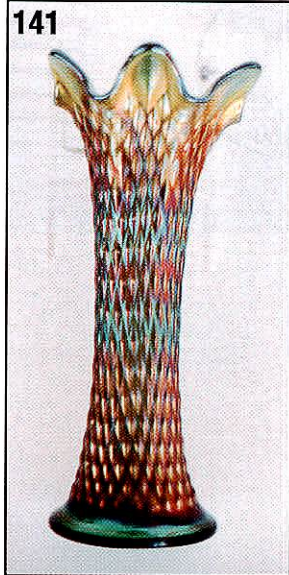
To see more color pictures, visit our website: <http://www.woodsland.com/ayers>

1. B--Fenton 18" Fine Rib super swung Vase. Silvery on bottom.
2. B--Fenton Nine Sixteen 1 1/2" Vase, swung out. Nice color all the way down but couple pinheads on bottom row.
3. M--Dugan Wreathed Cherry banana boat shaped lg Berry Bowl.
4. PO--Westmoreland 10" Corinth Vase, only 2" of iridization.
5. M--Mlbg Fleur De Lis 10" Bowl w/ 6 ruffles. Super example.
6. A--Mlbg Hanging Cherries 10" ICS Master Bowl. Silvery.
7. G--Mlbg 10" Rays & Ribbons rfld Bowl, couple of edge nicks
8. G--Mlbg Mayan 8" ICS Bowl. Nice example, nicked.
9. A--Mlbg Swirled Hobnail Rose Bowl, chunk gone of base.
10. **Olive G-- Morning Glory Funeral 18" Vase w/ 5" marie and 6" mouth. Super rare color.**
11. Choice (2 ea) M--Mlbg Hanging Cherries Creamers A) light colored and B) good color but heat check in handle.
12. Elec. P--Imp Lustre Rose 2 Pc Butter Dish. Super but chipped.
13. Dk M--N Grape & Cable Stippled Bon Bon. Super example.
14. M--Jeanette Studs Milk Pitcher. Nice Example.
15. G--N Fine Rib 10" Vase w/ Alaskan iridescence.
16. M--Imp. Thin Rib & Drape 6" Vase. Pinheads on ribs.
17. Pas. M--Mlbg Hanging Cherries 7" ICS Bowl. Has edge chip
18. P--Dugan Target 13" Vase, chip on base.
19. M--Imp. 474 Water Pitcher. Nice.
20. A--Mlbg Peacock 6" Berry Bowl. Sweet example.
21. M--Mlbg Grape Wreath 6" ruffled Variant Bowl w/Clover & Feather center. Neat.
22. G--Mlbg Grape Wreath 5" crimped edge Variant Bowl w/ Clover & Feather center.
23. G--Mlbg Grape Wreath 7" ruffled Bowl. Nice example w/ Feathered Leaf center.
24. Dk M--Fenton Leaf Chain 9" rfld Bowl w/ multicolor irid.
25. **A--N G & C Single Candle Stick. Nice colorful highlights.**
26. Lt M--Fenton Waterlily Sauce. Silvery.
27. G--Fenton Vintage 7 1/2" Plate. Soft satin highlights.
28. A--Mlbg Holy Sprig 7" ruffled Bowl.
29. B--N Peacock & Urn ICS 5" Sauce. Nice electric highlights.
30. **Choice (6 ea) A--N Peacock & Urn ICS 5" Bowls. Great!**
31. **Ice G--N Good Luck 9" Rib Back Plate. WOW! We all know how rare this is. Awesome pastels, teenie pinhead. A top piece in this auction.**
32. Choice (2 ea) M--Unlisted Panel-type Car Vases mounted to stand in matching wooden bases. Super neat pair.
33. **Brown--Fenton Vintage 8" 3inl edge Bowl. Believe it or not this is brown, this is no mistake. I know of three like this, all with super iridescence.**
34. **Awesome M--N Good Luck 9" stippled rib back Plate. Wow, this one will blow you away. Incredible iridescence. Show me one better. With ultrathin base.**
35. M--Poinsettia & Garland 5 1/2" Jardiniere Vase, w/ 3" base and 4 1/2" mouth. Fantastic pastel coloring. Rare.
36. B--Eda (Sweden) Kolor small size 6" Vase. Has killer color.
37. M--Eda (Sweden) Kolor small size 6" Vase. Fantastic.
38. Dk M--Eda (Sweden) Rex 8" Vase. This one is cool looking with good dark color but does have a couple of flakes on base.
39. P--N Drapery Rose Bowl w/ blues, pinks and purples.
40. **B--Fenton Birds & Cherries 10 1/2" Chop Plate. Still is the only one known in this color. We sold this one 3 years ago. Uneven color but you are buying rarity here. Originally from the Don Moore Collection.**
41. **Pumpkin--Fenton Peacock & Urn 9" Plate. Wonderful and sweet as sugar.**
42. G--Fenton Persian Medallion 8" CRE Bowl. Super item.
43. Violet B--N Fruits & Flowers Bon Bon. This one is neat, has electric highlights with violet in the base.
44. **Super P--European Four Flowers 10" ruffled Bowl. Want milk? Buy a cow. If you want incredible mind blowing electric blue on purple, buy this bowl. Holy Smokes!**
45. **Super Rare M--Sweden Four Flowers 10" Bowl w/ super radium irid. on an incredible rare and desirable bowl. This is the thin glass version.**
46. B--Eda Sunken Daisy 9" Bowl w/ typical foot roughness.
47. M--Eda Sunken Daisy 5" low flared out Bowl w/rough ft.
48. B--European Curved Star 7" Rose Bowl.
49. B--Eda (Sweden) Svea 5" Rose Bowl. Fantastic elec.example.
50. **B--Eda (Sweden) Svea 6 1/2" flared out Bowl. Very pretty.**
51. **M--Eda (Sweden) Svea 8" Rose Bowl. Dark color, although one small nick on its side.**
52. M--Eda (Sweden) Svea 4" Rose Bowl. Cute as a teddy bear. Rare size & super color.
53. B--Eda (Sweden) Sunken Daisy 3" Rose Bowl. Nice color, rare size, w/ typical foot roughness.
54. **Rare B--Eda (Sweden) Lagerkrantz (a.k.a. Laurel Wreath) Bon Bon with Lid. Super electric color. Couple small pinheads around the rims. Absolute beauty. More rare than you think.**
55. **PO--Dugan Petal & Fan 10" ruffled Bowl w/ Jeweled Heart exterior. Awesome example.**
56. A--Fenton Wreath of Roses Compote. Satiny.
57. PO--Dugan Six Petals 7" Bowl w/ 3in1 & butterscotch overlay.
58. M--Intaglio Golden Pansy (a.k.a. Eureka Cross) 8" Bowl.
59. (2 x \$) M--Intaglio Golden Pansy 4 1/2" Bowls. Rare.
60. **G/Teal--Fenton Peacock Tail 7" Plate. This rare and wonderful find has nice iridescence.**
61. Pas. M--N G & C 11" ruffled Bowl. Super pastels.
62. Choice (2 ea) M--Mlbg Blackberry Wreath 9" Bowls. A) is a ruffled super example and B) has 3inl edge and light pastel irid.
63. Choice (2ea) M--Mlbg Blackberry Wreath Bowls. A) is a pastel 10" ruffled bowl and B) is a 9" ICS, ok example.
64. M--Dugan Weeping Cherries rfld 9" dome ftd Bowl, satiny.
65. M--Dugan Five Hearts ftd Rose Bowl. Only a few known.
66. **Choice (2 ea) Jet Black--Eda (Sweden) pair of Vera 7" Vases. Has a mirror like finish. Rare and desirable.**
67. **Choice (2 ea) B--Eda (Sweden) Floral Sunburst 7" pair of Vases. Electric multicolored examples. WOW!**
68. **Choice (2 ea) B--European Curved Star 7 1/2" pair of Vases. Wow! A) is a super electric example and B) is a very close second. Both are in a very rare size.**
69. B--European Curved Star 9 1/2" Vase. Nice electric highlights. Beautiful but small flakes in pattern.
70. Dk M--Eda (Sweden) Kolor 8" Vase. Exquisite rarity.
71. Pink w/ M overlay--European (?) Western Sunflower. What a super vase!! This one is an electrifying vase.
72. M--Eda (Sweden) Rose Garden 5" letter Vase. Another wonderful vase w super coloring on this rare little gem.
73. M--Brockwitz (German) Rose Garden 9" cylindrical Vase. Awesome example of another rare vase in a rare size. Couple small nicks on the bottom, very hard to see.
74. M--Brockwitz (German) Rose Garden 7 1/2" cylindrical Vase. This one also has super color and is rare in size. Has couple small flakes on bottom that don't look like chips.
75. **Elec. P-- Fenton Diamond & Rib Whimsy 10 1/2" Vase w/ 3" marie and a 1 1/2" mouth. Is one of the most awesome pieces of glass I've ever seen shaped into a bud vase. The iridescence on this one is dripping wet.**

76. A--N Sunflower 9" ruffled spat ftd Bowl. Rainbow finish.
77. **M--European (?) Heavy Cut Whiskey Decanter. You can own a piece of history. From Rose Preznick's last auction.**
78. Helios--Imp. Acanthus 8" Bowl w/ mar.overlay. Kind of neat
79. **PO--Dugan Stippled Petals 9" dome ftd ruffled Bowl with beautiful hand painted flower decorations.**
80. M--Fenton Plaid 9" ICS Bowl, getting harder to find.
81. **Lav--N 3 Fruits Med. 9" spat ftd rfld Bowl. Rare color.**
82. Choice of 4 different Marigold Tumblers A) & B) are G & C, C) Floral & Grape and D) Vineyard w/ a small nick on rim.
83. Choice (2) Enamel painted Tumblers A) is a Blue N Cherries & Little Flowers and B) is a Green Fenton Forget Me Not.
84. A--Fenton Thistle 8" Bowl w/ 3in1 edge and is satiny.
85. **Choice (2 ea) Blue--Eda (Sweden) Tokio 9" Bowls. Both have fantastic iridescence. Super Duper Rare.**
86. B--Sweden Athena 9" Bowl. Another rare one.
87. **M--Sweden Astrid 6" Rose Bowl. Awesome example.**
88. **Elec. B--European Floral Sunburst 8" Vase. Super.**
89. **B--Brockwitz Texas Shot Glass. Everything is big in Texas, but this really isn't from Texas. Couple small flakes in geometrical pattern. Normal for these.**
90. **Multicolored Elec. B--N Good Luck 9" PCE Bowl. You can see it glow in the dark. Has interior stone in it's base.**
91. A--Fenton Grape & Cable Fruit Bowl w/ Persian Med. interior. Good Color but does have some rub marks on flames.
92. B--Fenton Thistle Banana Boat. Great color, sm pattern nicks
93. **A--Eda (Sweden) Svea (a.k.a Sweden) 8" giant Rose Bowl. Wow! Spectacular color, small flake on pattern.**
94. B--Eda (Sweden) Asters 8" Bowl. Silvery iridescence, couple minute pinheads on lip.
95. **B--Eda (Sweden) Charlie 10" Float Bowl. Awesome pattern on this very scarce bowl.**
96. **Elec. B--Eda Curved Star 6" Rose Bowl. Spectacular!!**
97. M--Eda (Sweden) Svea (a.k.a Sweden) 6" Saucer. Wonderful.
98. **M--Eda (Sweden) Charlie 4½" Rose Bowl. WOW!!**
99. M--European (?) Unlisted 4" miniature Vase. This sweet little thing has ten panels around it.
100. **G--Fenton Orange Tree Loving Cup great example**
101. B--Fenton Rustic 8½" Whimsey Vase w/ CRE flared out mouth (one side looks like a little spout). Neat looking.
102. **Elec. B--N Wishbone 8" ftd Bowl. This is a twin to the one that we sold last auction. Super sweet colorful example.**
103. **Elec. P--N Wishbone 8" ftd Bowl. Incredible example.**
104. **Elec. B--N Sunflower spat footed 8" Bowl.**
105. **Choice (3 ea) Dk M--Riihimaki (Finland) Western Thistle 5" Vases. All are superior examples.**
106. B--Eda (Sweden) Six Facet 8" multicolored Vase. Typical ground base w/ small pinhead on bottom of base. Super Scarce.
107. M--Fenton Butterfly & Berry 7 Pc Water Set. All matching.
108. M--Fenton Butterfly & Berry 7 Pc Berry Set. Master bowl is fantastic (the best I've seen) but it is selling as a set.
109. **Choice Blue Fenton Butterfly & Berry 4 Pc Table Set. Super color. A) Butter B) Spooner C) Creamer & D) Sugar.**
110. M--Fenton Butterfly & Berry 4 Pc Table Set. All matching.
111. Choice (6 ea) B--Fenton Butterfly & Berry Tumblers A), B), C) and D) are nice, E) is nicer, F) has a small pinhead.
112. **B--Fenton Butterfly & Berry 7 Pc Water Set. Beautiful pitcher. Set is hard to find in this color.**
113. B--Fenton Butterfly & Berry 7 Pc Berry Set. Is getting hard to find in this color.
114. **A--Fenton Butterfly & Berry Master Berry Bowl. Neat .**
115. Choice (6 ea) A--Fenton Butterfly & Berry sm Bowls. Great.
116. G--N Bullseye & Leaves 8" ruffled Bowl. Nice.
117. P--Imp. Cobblestone 9" ruffled Bowl. Silver & gold irid.
118. M--Dugan Pony 9" ruffled Bowl w/ satin finish.
119. **P--N Grape & Cable Variant 9" ruffled collar base Bowl. Super electric and even.**
120. B--N Three Fruits 9" flared up Plate w/ Basketweave exterior and super satin highlights. Minor fruit wear.
121. **B--Fenton Orange Tree Punch Set includes bowl, base and 6 cups. Couple cups are silvery but a nice set.**
122. **P--Imp. Broken Arches Punch Set includes bowl, base & 6 cups. Wear on bowl but good color, cups don't match.**
123. **W--Fenton Orange Tree Punch Set includes bowl, base & 6 cups. Frosty irid., 1 cup has flake but is iridized over.**
124. P--Dugan Maple Leaf 7 Pc Berry Set w/ Peacock Tail interior. Average iridescence.
125. P--N Dandelion Pitcher, multicolored but small flake on rim.
126. Choice (7 each) P--N Dandelion Tumblers. All different colors, one chipped, one with pinhead.
127. B--Fenton Cherry Blossoms Water Pitcher. Nice example.
128. Choice of 6 Enamel decorated Tumblers A), B), and C) are Blue--Cherry Blossoms, D) is a Blue Cherries & Little Flowers, E) is a Blue Iris, and F) is a Marigold Iris with Prism Band.
129. **P--N Singing Birds Water Pitcher. Nice electric highlights.**
130. Choice (6 ea) P--N Singing Birds Tumblers.
131. Choice of 4 different Contemporary Tumblers A) is a Purple God & Home, B) is a Purple Stork & Rushes, C) is an Ice Blue Checker Board, and D) is an Ice Blue Inverted Fan & Feather.
132. Contemp. B--Pansy 9" Plate, HOACGA souvenir from 2000.
133. Olive G--Imp. Open Rose Centerpiece Bowl. Lt irid, rare color.
134. M--Imp. Fashion 8 Pc Punch Set w/ bowl, base & 6 cups. Nice.
135. **Rare G--N Grape & Cable giant Compote. Great satiny highlights. This one is a real toughy.**
136. **B--Dugan Roundup 9" Plate. Satin highlights.**
137. **A--Dugan Roundup 9" Plate. Satin highlights.**
138. Sweet M--N Good Luck 9" PCE Bowl. Super pinks & purples
139. Dk M--N Strawberry 9" Plate. Basketweave exterior.
140. G--Fenton Pinecone 6" flared up Plate w/ plain back.
141. **Emerald G--N Diamond Point 9½" Vase. Super Example!!**
142. B--Fenton Fine Rib 12" Vase, multicolored. A great example.
143. M--Dugan Target 11½" Vase.
144. A--Dugan Target 10" Vase.
145. G--Imperial Ripple 8" Vase.
146. **G--N Acorn Burrs 7 Pc Berry Set. Super Rare. Don't remember last time one sold as a set. Not a matching set.**
147. Contemp. Red--1979 ACGA Beaded Shell Souvenir Mug from Indianapolis Convention.
148. Contemp. Super Red--Miniature Terry Crider Spittoon. Cute.
149. Contemp. Ice B--St. Clair Banded Holly Toothpick Holder.
150. Contemp. G--St. Clair Wreathed Cherry Toothpick Holder.
151. Amber--5½" Tumbler. Has a band of circles near the rim and base, middle pattern of diamonds alternated with circles. Fantastic irid. Pattern is close to Imp. Cape Cod.
152. Contemp. Cel B--Westmoreland Flute Tumbler.
153. Yellow--Unlisted Precut Tumbler. Kind of neat.
154. M--Hobstar Band flared-out Tumbler. Nice example.
155. Contemp. (2 ea) St. Clair G & C Tumblers (marked J.S.C. inside). A) fantastic Blue example, & B) nice & frosty White.
156. M--Pennsylvania Dutch Tumbler. Super rare w/ blk enameling.
157. M--Dugan Circle Scroll Tumbler. Fantastic example.
158. M--Fenton Butterfly & Berry Tumbler. Poor mold impression.
159. M--Hobstar Reversed 3 ftd Rose Bowl. Only a handful known.
160. B--Fenton Ten Mums Tumbler.

161. G--Fenton Fluffy Peacock Tumbler. Silver & gold irid. Scarce.
162. **M--European Star & Fan 6 Pc Wine Set. Includes: Tray, Cordial Bottle w/ Stopper and 4 wine glasses. Super rare.**
163. M--US Glass Omnibus Tumbler.
164. M--Argentina Ribbed Band & Scales Tmblr w/ NCP on base
165. M--Buzz Saw & File Goblet. Great examples.
166. **Dk M--Inwald (Czech.) Princeton 10" Vase. Awesome color. Best one I've seen.**
167. B--Riihimaki (Finland) Tiger Lily Water Pitcher. Has a couple of chips in pattern. Still rare.
168. **B--Eda (Sweden) Curved Star 7" small Cake Plate. Sweet.**
169. B--Eda Svea (a.k.a. Sweden) 5½" Rose Bowl. Pinheads, cute.
170. B--Eda (Sweden) Rose Garden 4½" Bowl. Desirable.
171. M--Eda (Sweden) Sunken Daisy 4" Bowl. Rough ground feet.
172. **P--Eda (Sweden) Sunken Daisy 3" Rose Bowl. Awesome color. Typical rough feet & base. Heat check in base.**
173. B--Eda (Sweden) Rose Garden 6" Bowl. Common ft nicks.
174. Choice (2 ea) M--Eda (Sweden) Rose Garden 6" Bowls. Both have typical ground base.
175. Lt. M--Threaded Six Panel 7" Bud Vase. My guess, European
176. M--Fenton Orange Tree Orchard Tumbler. Fantastic example.
177. Vas--Fenton Fine Rib 9" Vase. No need for a backlight.
178. P--Imp. Morning Glory 7" Vase. Electric.
179. M--Fenton Butterfly & Berry 7" Vase w/ CRE. Nice & dark.
180. M--Imp. Ripple 9" Vase. Cool looking, without ripples on it's lower half.
181. M--Fenton Orange Tree Fruit Bowl. Nice example.
182. Dk M--Imp. Windmill 7" ICS Bowl. Small chip inside. Super.
183. M--Fenton Waterlily & Cattails Bon Bon. Nice example.
184. M--Fenton Persian Medallion Bon Bon.
185. **W--N Grape & Cable 10½" IC Master Bowl. Ultra Neat.**
186. M--Imp. Lustre Rose Butter Dish. Sweet.
187. Choice of 2 pcs of M--Fenton Butterfly & Berry. A) is a dark Covered Sugar, and B) is a Creamer.
188. **A--N Grape & Cable spatula ftd 8" Bowl. Rainbow irid. Cool as a cucumber.**
189. Choice (2 ea) M--Fenton Blackberry Spray ruffled Hat. A) has 4 sprays & nice pastels and B) has 2 sprays, satin finish.
190. W--N Peacock & Urn 10" Master IC Bowl. Super frosty color. Base grounded slightly.
191. **Choice (2 ea) Frosty W--N Peacock & Urn 5" sm. Bowls.**
192. M--Fenton Blackberry Banded ruffled Hat.
193. M--Fenton Waterlily & Cattails 5" Sauce.
194. M--Fenton Orange Tree 5" ftd ICS Bowl. Bubble on foot.
195. Olive G--N Four Pillars 10" Vase. Wow!! Opps, foot nicks.
196. M--Fenton 2 rows Open Edge ruffled Hat. Nice.
197. M--Fenton Blackberry Bramble Compote.
198. **Pink w/ M overlay--Dugan Beaded Basket. Not often seen.**
199. Dk M--Dugan Violet Basket. Nice
200. **Awesome P--Imp. Grape 9" ICS Bowl. Super Duper example with blow away color inside & out.**
201. **P--Imp. Windmill 8" ruffled Bowl. Awesome electric multicolored bowl. Sweet.**
202. P--Westmoreland Colonial tall Compote w/ light irid. Super
203. B--Imp. Jewels 9" Plate. Rare but silvery.
204. P--N Greek Key 9" flared up Plate, also silvery.
205. Lt B--Enamel Waterlily & Cattails Tumbler. Very rare color.
206. Dk Mar--Fenton Stippled Rays ruffled Compote. Nice color.
207. (Contemp.) Lt Smoke--Centennial Tumbler.
208. Dk M--Imp. 474 Wine. Sweet example.
209. M--Fenton Sailboat 6" Saucer w/ 4 sides up. Neat item.
210. PO--Dugan Starfish Compote. Getting harder to find.
211. Dk M--Fenton Mikado Compote. A Fenton favorite.
212. **M--Imp. Poppy Show Vase. Sweet multicolored example.**
213. M--Mlbg Hobstar & Feather Punch Base, bruised. Rare.
214. P--Dugan Target 11½" Vase. Base chips.
215. A--N Fine Rib 10" Vase, multicolored example.
216. M--Fenton Stag & Holly ball ftd rfld 10" Bowl. Great classic.
217. M--Imp. Octagon Butter Dish. Has minor nicks on finial.
218. G--N Star of David & Bows 7" rfld dome ftd Bowl. Satiny.
219. G--N Fine Rib 10" Vase. Mold roughness round lip.
220. **Lime G--Model Flint Glass Co. Stippled Estate 5½" Vase.**
221. M--Dugan Mary Ann 2 handled Vase. Nice example.
222. PO--Dugan Star Fish Compote. Neat little compote.
223. **Electric P--Imp. Open Rose 7" round Bowl. Super int.**
224. W--N Hearts & Flowers Compote. Sweet coloring..
225. M--Fenton Holly 3inl edge 9" Bowl. Nice satin finish.
226. A--Fenton Feathered Serpent 10" rfld Bowl. Satiny, open bubble.
227. M--Fenton Peacock & Grape 3inl edge collar base Bowl. Wow!
228. A--Fenton Peacock & Grape 3inl collar base Bowl. Great.
229. A--N Grape Leaves 9" ruffled Bowl. Super satiny.
230. M--N Grape & Cable 9" Plate w/ BW ext. Nice iridescence.
231. **M--Fenton Horse Medallion 7½" Plate. Scarce.**
232. PO--Dugan Four Flowers 9½" ICS Bowl. Great example.
233. G--Mlbg Primrose 10" rfld Bowl. Satiny. Small open bubble
234. Radium M--Mlbg Primrose 10" ruffled Bowl. Radium beauty.
235. M--Mlbg Hanging Cherries 10" IC Master Bowl. Soft pastels.
236. G--Mlbg Hanging Cherries 10" 3inl edge Bowl. Satin finish.
237. A--Mlbg Grape Wreath 8½" rfld Bowl w/ 8-pt star on base
238. G--Mlbg Grape Wreath 7½" scalloped Bowl w/ 8-pt base star
239. **Honey M--6 Pc Water Set w/ White enamel hand painted decoration and German inscription on pitcher reads 'Brothers Drink till you sink'. One tumbler w/ flake on edge.**
240. AO--N Dugan Drapery Rose Bowl. Base epoxy, still good.
241. A--Imp. Pansy Pickle Dish. Nice.
242. B--Fenton G & C 6½" ICS Bowl. Rainbow satiny irid.
243. G--Cambridge Inverted Strawberry 6½" Bowl, Near Cut stamp
244. Choice (6 ea) M--Imp. Star Medallion Tmblrs. Nice examples.
245. Choice (2 ea) Imp. Lustre Rose Tmblrs. A) Purp. B) Mar.
246. Choice (3 ea) Dugan Floral & Grape Tumblers. A) is Blue, B) is Amethyst w/ electric highlights and C) is a nice Amethyst.
247. Choice (2 ea) A--Dugan Rambler Rose Tumblers.
248. Choice (2 ea) A--Imp. Diamond Lace Tumblers. A) is electric with gold highlights and B) is also electric with blue highlights.
249. Smokey B--Imp. Floral & Optic 11" ftd Cake Plate. Super rare color. Awesome example.
250. **G--Mlbg Diamonds Water Pitcher, gold & purple hilights.**
251. M--Imp. Fashion 7 Pc Water Set. Nice.
252. **G--N Grape & Cable 2 Pc Breakfast Set. Super color.**
253. **G--N Grape & Cable 10" Salad Bowl. Satiny but one small scratch inside. Rare example.**
254. **G--N G & C 7 Pc Berry Set. Nice w/ lots of colors.**
255. **P--N G & C 7 Pc Berry Set. Lots of electric highlights.**
256. A--N Wild Strawberry 5 Pc Berry Set. Master a little silvery.
257. **G--N Grape & Cable Dresser Tray. Super dark example. Scarce color of a rare gem.**
258. Choice (2 ea) N Springtime Tumblers. A) is a super Marigold example and B) is a silvery Purple.
259. Choice (2 ea) G--N Grape & Cable Tumblers A) is Standard size, and B) is Tankard size.
260. M--Split Diamond Creamer. Sweet little miniature.
261. **Choice (2 ea) P--Imp. Star of David Bowls. A) 8" radium electric multicolored irid. WOW! and B) 8½" electric.**
262. **G--Fenton Grape & Cable Fruit Bowl w/ Persian Med interior. Scarce color. Nice.**

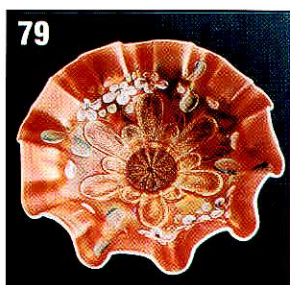
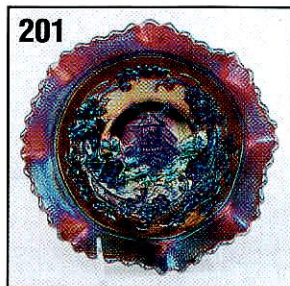
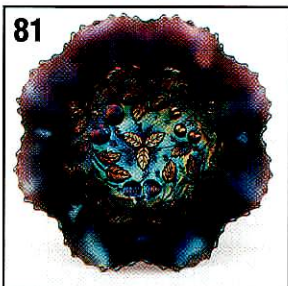
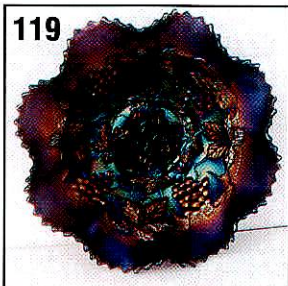
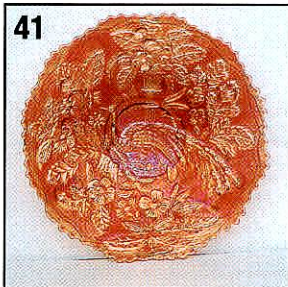
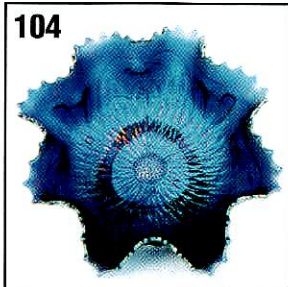
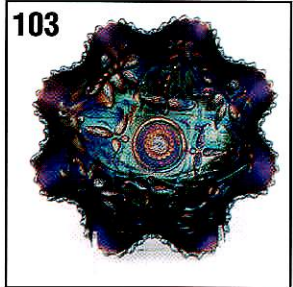
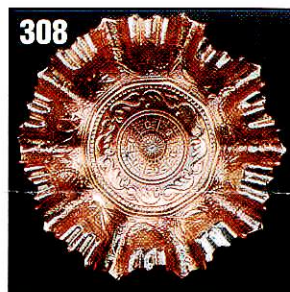
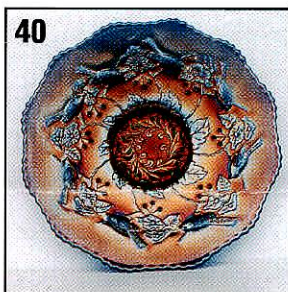
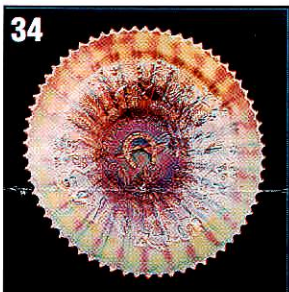
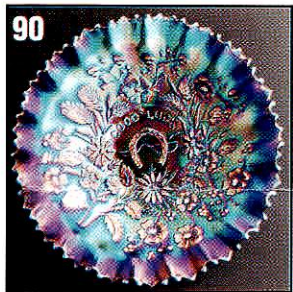
263. G--N Wishbone 8" ftd ruffled Bowl w/ Alaskan overlay.
264. A--N Butterfly Bon Bon w/ plain back. Nice example.
265. G--Fenton Birds & Cherries Bon Bon. Satiny.
266. **Emerald G--N Acorn Burrs Spooner. Great example.**
267. P--N G & C Creamer w/ gold, purple, and blue highlights.
268. A--Westmoreland Strutting Peacock Cream & Sugar w/lids.
269. Super M--Fenton Two Flowers 10" ftd & ruffled Bowl.
270. **P--N Grape & Cable Hatpin Holder. Nice multicolored electric highlights. Good feet.**
271. M--Fenton Absentee Miniature Blackberry Variant Rose Bowl. Mold roughness on base.
272. Choice (4 ea) G--N G&C Punch Cups A), B), and C) are standard, and D) is stippled.
273. Choice of 3 different M--Imp. Punch Cups A) is 474, B) is Star Medallion and C) is Fashion. All are really good examples.
274. Choice (2 ea) B--Fenton Orange Tree ftd Tumblers. A) has rough feet but B) is good.
275. Choice (2 ea) Fenton Panelled Dandelion Tumblers. A) is Green and B) is Blue.
276. Choice (2 ea) N Raspberry Tumblers. A) is Green and B) is Purple. Both are super.
277. Choice (2 ea) Mlbg Diamonds Tumblers. A) is Teal (a super rare one here) and B) is Green.
278. Choice (2 ea) Celest B--N Concave Diamonds Tumblers.
279. Clambroth--Imp. Lustre Rose Pitcher & 1 Tumbler.
280. **Dk M--N Grape & Cable Pitcher. Super color.**
281. G--Mlbg Rays & Ribbons 10" 3in1 ruffled Bowl.
282. Dk M--N Raspberry Milk Pitcher. Super & scarce.
283. M--Imp Windmill 6¼" Milk Pitcher. Strong coloring.
284. A--N Grape Leaves 9" ruffled Bowl. Nice.
285. A--N Greek Key 9" PCE Bowl w/ Basketweave exterior & purple, pink and blue highlights.
286. M--Fenton Holly 8" ruffled Bowl. Soft satin highlights.
287. G--N Singing Bird Mug. Good Color.
288. B--Fenton Orange Tree Mug. Radium.
289. M--Fenton Leaf Chain 9" ruffled Bowl. Dark and wonderful.
290. W--N 8-sided Bushel Basket. Frosty & sweet.
291. B--N round Bushel Basket.
292. A--N round Bushel Basket.
293. Choice of 2 different N Tumblers. A) is a Purple Greek Key and B) is a Blue Grape & Gothic Arches. Both are etched "1914".
294. Choice (3 ea) P--N Memphis Punch Cups. A) has blue & purple irid., B) has silver & gold and C) has gold & purple irid.
295. **Fiery A--N Nippon 9" PCE Bowl. Scarce color.**
296. **P--N Strawberry 9" PCE Bowl. Nice rainbow colors.**
297. P--N Fine Cut & Roses Rose Bowl. This one is satiny.
298. P--Dugan Fishscale & Beads 7" CRE low Bowl w/ golds, purples, and pinks.
299. Electric B--N Peacock at the Fountain Tumbler. Nice.
300. B--N Peach Tumbler. Bright electric blue irid. but not even all around. Scarce color.
301. **G--N Singing Birds 7 Pc Berry Set. Rare set w/ not bad color. One small bowl has a flake.**
302. **Rare A--Fenton Butterfly & Fern Water Pitcher. Nice silver, purple, and blue highlights.**
303. **Choice (6 ea) A--Fenton Butterfly & Fern Tumblers. All nice. A) and B) standard, & C), D), E), and F) variants.**
304. Choice of 6 Dk M--Tumblers, super. A) Fentonia, B) 474, C) Star & File, D) Octagon, E) Fashion, & F) Tiger Lily.
305. **Choice super rare G--N G&C Table Set. A) Butter, B) Sugar, C) Spooner and D) is Creamer. All above average.**
306. **A--Dugan Fishnest Epergne w/flared ruffled Base. No damage on either pieces.**
307. **G--Fenton Persian Medallion 10" 3in1 Edge Bowl.**
308. M--Dugan Fanciful 9" Bowl w/ 3in1 edge & radium finish.
309. Choice of 3 different Tumblers A) is a rare Blue Blueberry, B) is Blue Orange Tree Orchard & C) is Amethyst Maple Leaf.
310. M--Fenton Dragon & Lotus 9" ruffled Bowl.
311. M--Dugan Windflower 9" ruffled Bowl.
312. M--Mlbg Advertising "House of Issac Benesch" Holly Card Tray. Nice example.
313. Dk M--Fenton Acorn 6" ICS Bowl.
314. Lt. M--Dugan Fanciful 9" ICS Bowl. Silvery.
315. G--Cambridge Inverted Strawberry 7" ICS Bowl, Near Cut.
316. G--Mlbg Cosmos 5½" ICS Bowl Rare Size nice highlights
317. Choice (2 ea) Fenton Wreath of Roses Compotes. A) is Purple and B) is Marigold. Both are nice.
318. M--Fenton Butterflies Bon Bon. Dark example.
319. A--Mlbg Holly Sprig 7" ruffled Bowl. Radium highlights.
320. G--Mlbg Holly Sprig 7" ruffled Bowl.
321. B--Fenton Horse Medallion JIP ftd Bowl, silver & gold irid.
322. Clambroth--Imp. Frosted Block square ruffled Bowl.
323. A--N Raspberry Gravy Boat, multicolored.
324. M--Imp. Heavy Grape 8" Plate.
325. Choice (2 ea) Jeanette Butterfly Pintrays. A) Teal, B) Mar.
326. M--Cockatoo single Wall Pocket. Nice.
327. A--Westmoreland Corinth Bride's Basket with metal handle.
328. G--Fenton Vintage 9" Bowl w/ 3in1 edge.
329. B--Fenton Orange Tree Sugar Lid (hard to come by). Great.
330. Choice on 6 Berry Bowls. A) Purple Scroll Embossed, B) PO Ski Star, C) Purple Stippled Petals, D) Purple Dahlia, E) Amethyst Acorn Burrs, and F) Purple Diamond Lace.
331. **Rare Smoke--Imp. Fashion 9" rfld Bowl. Sweet pastels.**
332. M--Imp. Diamond Ring 9" ruffled Bowl. Nice.
333. **Smoke--Imp. Diamond Ring 9" ruffled Bowl.**
334. A--Imp. Diamond Lace 9" ruffled Bowl. Nice highlights.
335. A--N Stippled Ray 10" PCE Bowl. Rainbow coloring.
336. B--Fenton Heart & Vine 8" Bowl w/ 3in1 edge.
337. **G--N Wild Rose Nut Bowl. Awesome emerald green irid.**
338. Choice of 2 Tumblers. A) flared-out Green Cambridge Double Star, and B) Emerald Green N Grape & Gothic Arches.
339. **G--Fenton Three Fruits 9½" Plate. Minor fruit wear.**
340. Choice of 3 Water Goblets. All three are great. A) Mar. Star Medallion, B) Mar. Imp. Grape, & C) Mar. Orange Tree.
341. B--Fenton Captive Rose 9" rfld Bowl. Satin w/ even color.
342. B--Fenton Orange Tree 9" Plate. Good color, has chips.
343. PO--Dugan Wishbone & Spades 9" ICS Bowl.
344. A--Fenton Captive Rose 9" ruffled Bowl.
345. Dk M--N Three Fruits 9" Plate. Wear on fruit.
346. Super M--Fenton Holly 9" Plate. Super example, base chip.
347. A--Mlbg Blackberry Wreath 7½" Bowl w/ 3in1 edge, satiny
348. G--N Fine Rib 7½" Vase w/ Alaskan irid.
349. G--N Flute Toothpick Holder, rough edges.
350. Amber--Imp. Pansy Pickle Dish.
351. Choice of 3 different Berry Bowls. A) is a nice Blue Butterfly & Berry, B) is a Mar. Butterfly & Berry, & C) is Green G & C.
352. Choice of 3 Punch Cups, all nice. A) is Amethyst Acorn Burrs, B) is Green Lustre Flute, and C) is a Mar. Fashion.
353. Lt M--Fenton Orange Tree 8" ICS Bowl, silvery.
354. B--Fenton Sailboat 5" ICS Bowl.
355. M--Golden Wedding Whiskey Bottle.
356. M--Imp. Soda Gold Car Vase. Nice example.
357. 8 Carnival Buttons on a card. Sold as one unit. Nice selection.
358. A--Fenton Stippled Rays 9" CRE Bowl.
359. G--Fenton Thistle 8" CRE Bowl.
360. Peach--Swirl 7" low Bowl w/ frosted effect.



Saturday, October 28, 2000

CARNIVAL GLASS AUCTION
with LIVE TELEPHONE BIDDING

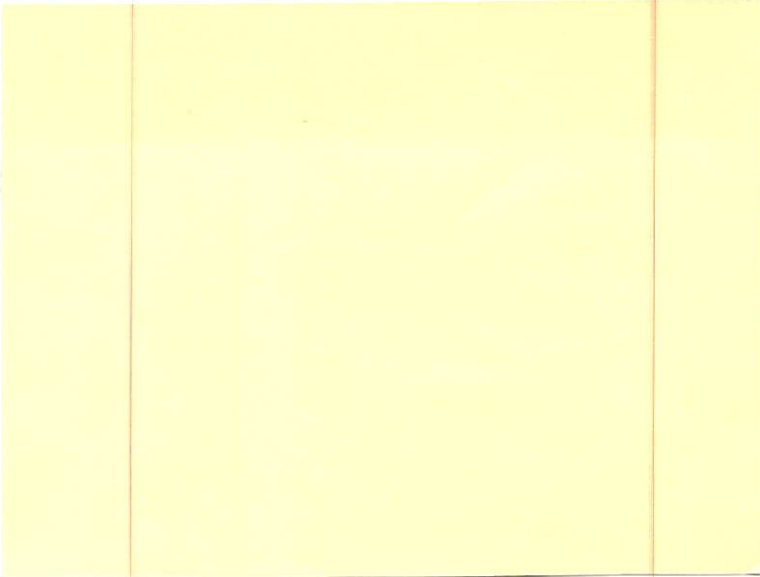
Presented by:
Ayers Auction Service



Ayers Auction Service
PO Box 320
Tremont, IL 61568-0320
(309) 925-3115



31



CARNIVAL GLASS AUCTION

Saturday, October 28, 2000

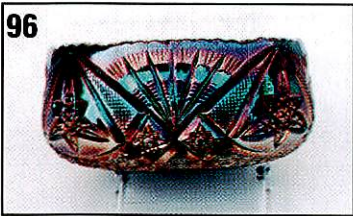
Auction Begins: 9:30 A.M.

Preview: Friday 5:00 - 7:00 P.M. and
Saturday 8:00 - 9:30 A.M.

The Mark Twain Hotel, Downtown Peoria, Illinois
Call (800) 352-6351 for Reservations

As Listed
Mark Twain Hotel
CARNIVAL GLASS AUCTION with LIVE TELEPHONE BIDDING
Saturday, October 28, 2000 - 9:30 A.M.

96



98



87



200



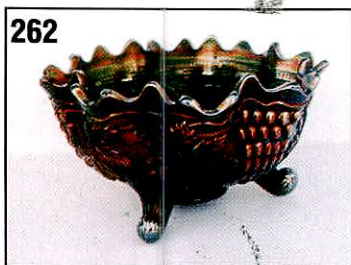
172



95



262



257

