



BURNS

AUCTION SERVICE

Mid-Atlantic Carnival Glass Jamboree Auction

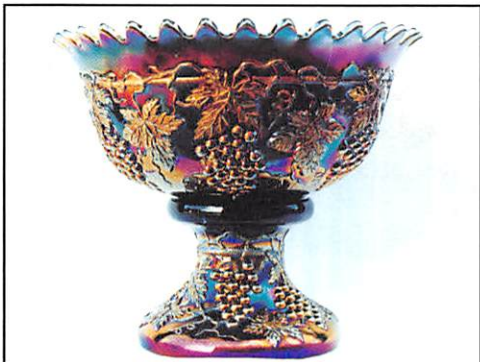
Friday & Saturday
October 27 & 28, 2000

Friday: Preview – 3:00 P.M. to 6:30 P.M.
Auction – 6:30 P.M. (Lots 1-170)
Saturday: Preview – 8:00 A.M. to 9:00 A.M.
Auction – 9:00 A.M. (Lots 171-End)

at the
Venice Inn

301 Dual Highway (Rt. 40)
Hagerstown, Maryland 21740

(301) 733-0830
or for reservations
1-800-2-VENICE



Once again, it's time for the annual Mid-Atlantic Carnival Glass Jamboree in good ole Hagerstown, Maryland. This year's auction consists of a number of rare and attractive glassware items in all colors from all makers.

The main consignment of glass is from the Aurand Collection from Beavertown, Pennsylvania. In the 1960's their collection was ranked one of the top 5 in the country by O. Joe Olson and his newsletters. They had one large auction in the 70's and sold some things here and there throughout the years...what's left is here. There are some other consignments making for a really desirable auction for your pleasure.

The auction will be held in conjunction with the Mid-Atlantic Jamboree which will run from October 25 to 28, 2000. As usual there will be plenty of rooms with for sale glass as well as other convention activities. Be sure to make it.

The convention will be held at the Venice Inn in Hagerstown. From what I understand, the hotel section is full but there are still rooms in the motel section available. Be sure to make your plans NOW!

The Venice Inn is located on Dual Highway (Rt. 40) on the east side of downtown. Take Exit 6A if driving on I-81 or Exit 32B off I-70 – you can't miss it. To make reservations, call the motel direct at (301) 733-0830 or 1-800-2-VENICE. For more information on the motel or the convention in general, call either Nancy Williams at (610) 374-9033 or Sharon Mizell at (301) 384-8952. Hope to see you there!

CHECK OUT BURNS AUCTION SERVICE ON THE WEB!

Visit our new Web site for information on upcoming auctions, complete auction listings and photos of auction highlights. You can e-mail your bids or requests for information.

<http://carnival.ksnews.com/burnsauction> e-mail: brnzauctsv@aol.com

BURNS AUCTION SERVICE

Tom Burns
P.O. Box 608, Bath, NY 14810
(607) 776-7942
Cell #: (607) 731-9302 (do not leave messages)

Bill Richards
44 Water St., Poland, OH 44514
(330) 757-2001
FAX (330)-757-4917

Bill Richards, III
2253 Country Lane
Poland, OH 44514
(330) 755-2620

Mail Bids honored under the following conditions:

1. No deposit required, Bidders will take full responsibility to honor any and all bids we execute for them. Payment in full plus postage and handling required after notification and before we ship any item to them.
2. Items are bid on in perfect condition with average or above average iridescence OR as listed in the brochures. Bids will not be carried out when damage on an item has been found during the auction. **PEOPLE PRESENT AT AUCTION ARE RESPONSIBLE FOR FINDING ANY PINHEADS, WEAR, SPOTTINESS, MANUFACTURER'S DEFECTS OR ANY OTHER MINOR FLAWS, ETC.**
3. Successful bidders will be notified by collect call from the auctioneer (so be sure to include the phone number).
4. Phone inquiries about the glass or any other questions are welcome.
5. If you have some other person at the auction bidding for you, they must pay for the item before taking it.
6. Any terms or conditions given the day of the auction will supersede any previously published information.
7. Mail, e-mail, fax and phone bids are due by Tuesday, October 24, 2000.

- | | |
|---|---|
| <p>_____ 1. 8-3/4" Vineland Stretch Round Flared Bowl – Amber (scarce color; nice)</p> <p>_____ 2. 8-1/4" Imperial Stretch Wide Panel Flat Plate – Red (super color and irid.)</p> <p>_____ 3. 7-1/4" Tall x 7-1/2" Wide Imperial Stretch Wide Panel Stemmed Compote – White (very scare and desirable; signed w/ Iron Cross)</p> <p>_____ 4. 5-1/4" Tall x 4-3/4" Wide Fenton Stretch Flared Vase – Wisteria (very scarce color; has small chips on rim)</p> <p>_____ 5. PAIR FENTON STRETCH CORNUCOPIA CANDLESTICKS – WHITE (VERY SCARCE AND VERY DESIRABLE PAIR; NICE)</p> <p>_____ 6. 4-4-1/4" Czech Covered Powder Jar w/ Figural Rose Finial – Lt. Mari. (very unusual item w/ applied flower finial)</p> <p>_____ 7. 3-1/2" Czech Covered Puff Jar w/ Enam. Decor. – Lt. Mari. (a cutie; frosted top w/ Enam. Oranges)</p> <p>_____ 8. Jeanette Butterfly Figural Pin Tray – Aqua. (very scarce base color)</p> <p>_____ 9. 5" Tall U.S. Glass Estate Vase (or Hatpin Holder) – Grey Flash (rare item w/ nice flash irid.)</p> <p>_____ 10. 10-1/4" TALL X 3-1/2" BASE N TREE TRUNK STANDARD SWUNG VASE – AQUA OPAL. (A SUPER, SUPER PASTEL EXAMPLE W/ GREAT OPAL. AND IRID.; WOW!)</p> <p>_____ 11. 8" Tall N Tree Trunk Squatty Swung Vase – White (rare size and very desirable; has check in base)</p> <p>_____ 12. 9" Tall N Drapery Variant Swung Vase – Dk. Mari. (super color and irid.; super example)</p> <p>_____ 13. N Drapery Rose Bowl – Aqua Opal. (rare and desirable; nice opal.; tiny ding on base)</p> <p>_____ 14. N Peacock at the Fountain Stemmed 6 Ruffled Compote – White (rare item; large chip on base)</p> | <p>_____ 15. N DRAPERY TRI-CORNERED CANDY DISH – WHITE (VERY SCARCE; PERFECT FEET W/ GREAT COLOR AND IRID.)</p> <p>_____ 16. Westmoreland Leaf Swirl 6 Ruffled Compote – Amber (very nice example; nice and dark)</p> <p>_____ 17. Fenton Flowers Ftd. Rose Bowl – Green (very scarce color and perfect feet)</p> <p>_____ 18. Fenton Iris Stemmed 6 Ruffled Compote – Blue (very scarce color; nice and dark)</p> <p>_____ 19. Fenton Stippled Rays Pedestaled Creamer – White (extremely rare color for this item; nice)</p> <p>_____ 20. 9" FENTON HOLLY 8 RUFFLED BOWL – AMBER (RARE BASE COLOR FOR THIS PATTERN)</p> <p>_____ 21. 6-1/2" Fenton Stippled Rays 6 Ruffled Sauce – Mari./Vaseline (scarce base color for this item)</p> <p>_____ 22. Fenton Two Row Open Edge 4 Sided Square Hat – Red (scarce shape for this item; goldish)</p> <p>_____ 23. FENTON SCALE BAND TUMBLER – BLUE (VERY RARE COLOR FOR THIS PATTERN; SILVERY)</p> <p>_____ 24. Diamond (?) Interior Wide Panel Handled Mug – Blue (I call this lustre and clear; I've only seen two)</p> <p>_____ 25. EUROPEAN TOFFEE BLOCK TUMBLER – LT. MARI. (EXTREMELY RARE PATTERN; NOT MANY KNOWN)</p> <p>_____ 26. 1900 Washington D.C. Shriners Wine Glass w/ Original U.S. Glass Label – Crystal (rare because of the label; neat)</p> <p>_____ 27. Pr. 8" Tall Heisey Style 6 Paneled Candlesticks – Lt. Mari. (unusual pair; light in color)</p> <p>_____ 28. Cambridge Inverted Strawberry Covered Powder Jar – Dk. Mari. (very scarce and desirable; has chip on lid)</p> |
|---|---|

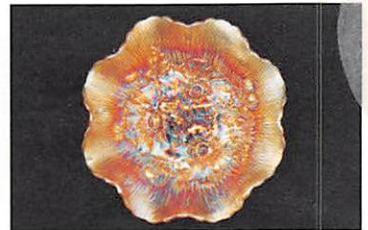
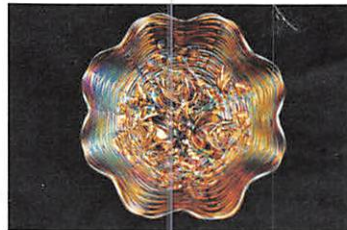
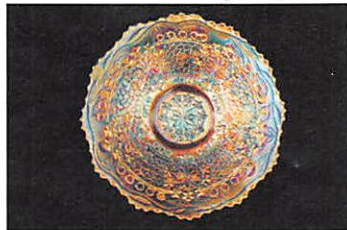
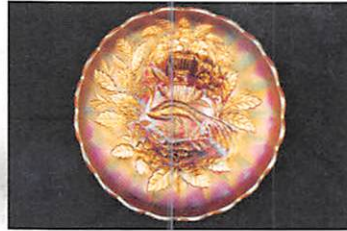
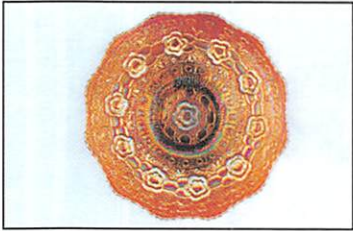
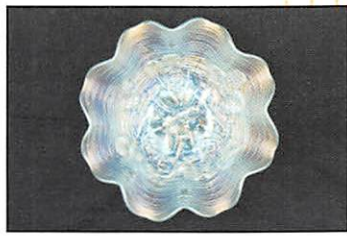
- _____ 29. 6" M'burg Cosmos Ice Cream Shaped Bowl – Green (radium; a bit lighter irid. in center)
- _____ 30. **10-1/2" FOSTORIA BROCADED ACORN LG. OPEN HANDLED BOWL W/ ORIGINAL LABEL – ICE BLUE (VERY SCARCE ITEM; HAS ORIGINAL LABEL)**
- _____ 31. N Wild Rose Ftd. Nut Bowl w/ Stippled Rays Int. – Purp. (edges straight up; satiny finish)
- _____ 32. 6-1/2" Tall N Thin Rib Squatty Swung Vase – Purp. (squatty size; nice satiny finish)
- _____ 33. 8-3/4" Tall N Diamond Point Swung Flared Vase – Purp. (nice satiny finish)
- _____ 34. 10" Tall N Diamond Point Standard Swung Vase – Purp. (has nice bright irid.; very desirable; selling choice)
- _____ 35. **(2) 12-1/4" TALL X 4-1/2" BASE N TREE TRUNK MID SIZE SWUNG VASES – ICE BLUE (VERY RARE W/ SUPER IRID.; SELLING CHOICE; FLARED EXAMPLE HAS SMALL EPOXY SPOT ON EDGE)**
- _____ 36. 8-1/4" N Wishbone Ftd. 8 Ruffled Bowl – Green (has a silvery satiny irid.)
- _____ 37. 9" N Grape Leaves 8 Ruffled Bowl – Purp. (has a silvery, goldish satiny finish)
- _____ 38. N Fruit and Flowers Stemmed Handled Bon Bon – Purp. (another nice satiny example)
- _____ 39. **N FRUIT AND FLOWERS STEMMED HANDLED BON BON – AQUA OPAL. (SUPER PASTEL FINISH AND OPAL.; VERY ATTRACTIVE)**
- _____ 40. **N GOOD LUCK 8 RUFFLED BOWL W/ RIBBED EXT. – AQUA OPAL. (SUPER PASTEL EXAMPLE; VERY ATTRACTIVE; HAS ROUGHNESS ON HORSESHOE)**
- _____ 41. N Good Luck 8 Ruffled Bowl w/ Ribbed Ext. – Elec. Blue (a very attractive example w/ bright blue irid.)
- _____ 42. N Fine Cut and Roses Ftd. Rose Bowl w/ Fancy Int. – Ice Blue (very scarce and desirable; pretty good feet)
- _____ 43. N Fine Cut and Roses Ftd. Rose Bowl – Purp. (nice color and irid.)
- _____ 44. N Singing Bird Handled Mug – Mari. (satiny finish)
- _____ 45. **N ROSE SHOW 8 RUFFLED BOWL – AQUA OPAL. (RARE AND DESIRABLE; GREAT OPAL. W/ JUST A TOUCH OF BUTTERSCOTCH)**
- _____ 46. **N ROSE SHOW 8 RUFFLED BOWL – ICE BLUE (RARE AND DESIRABLE; PERFECT W/ PINK AND GOLD HIGHLIGHTS)**
- _____ 47. **N ROSE SHOW 8 RUFFLED BOWL – HONEY AMBER (EXTREMELY RARE BASE COLOR; SUPER TOUGH TO FIND; GREAT COLOR AND IRID.)**
- _____ 48. N Leaf and Beads Ftd. Rose Bowl – Purp. (nice color and irid.; has blue and red highlight)
- _____ 49. N Double Loop Chalice (or Open Sugar) – Blue (nice color and irid.)
- _____ 50. **N POPPY SHOW FLAT PLATE – PASTEL MARI. (ACTUALLY QUITE A RARE ITEM; LIGHT COLOR WITH PINKISH HIGHLIGHTS)**
- _____ 51. **N POPPY SHOW 8 RUFFLED BOWL – MARI. (VERY SCARCE AND VERY DESIRABLE; GREAT IRID.)**
- _____ 52. **N POPPY SHOW FLAT PLATE – BLUE (RARE AND VERY DESIRABLE; HAS MULTI-COLORED IRID.)**
- _____ 53. N Drapery Rose Bowl – Aqua Opal. (very scarce and desirable; nice opal. and irid.)
- _____ 54. N Drapery Rose Bowl – Amyth. (light base color w/ nice irid.)
- _____ 55. **N PEACOCK AT THE FOUNTAIN 10 PC. PUNCH SET – PURP. (RARE AND VERY DESIRABLE; NICE MULTI-COLORED IRID.; BASE HAS BRIGHT BLUES)**
- _____ 56. **N PEACOCK AT THE FOUNTAIN 7 PC. WATER SET – PURP. (SUPER SET; VERY ATTRACTIVE W/ BRIGHT IRID.)**
- _____ 57. N Peacock at the Fountain 4 Pc. Table Set – Purp. (very scarce set; creamer and spooner are only average)
- _____ 58. **N PEACOCK AT THE FOUNTAIN FTD. RUFFLED FRUIT BOWL – BLUE (RARE AND VERY DESIRABLE; HAS BRIGHT IRID. W/ RED HIGHLIGHTS)**
- _____ 59. **N PEACOCK AT THE FOUNTAIN FTD. RUFFLED FRUIT BOWL – DK. MARI. (HAS TO BE ONE OF THE BEST EXAMPLES I'VE SEEN)**
- _____ 60. **N PEACOCKS PLATE W/ RIBBED EXTERIOR – AMYTH./ SODA GOLD (VERY RARE BASE COLOR; PERFECT W/ NICE BRONZE HIGHLIGHTS)**
- _____ 61. **N PEACOCKS 8 RUFFLED BOWL W/ RIBBED EXT. – AMYTH./ SODA GOLD (ANOTHER RARE EXAMPLE W/ NICE BRONZE IRID.)**
- _____ 62. **N PEACOCKS 8 RUFFLED BOWL W/ RIBBED EXT. – AQUA OPAL. (RARE AND DESIRABLE; A LIGHT PASTEL EXAMPLE)**
- _____ 63. N Peacocks Flat Plate w/ Ribbed Ext. – Pastel Mari. (a super example w/ a radium type finish)
- _____ 64. N Grape Arbor 7 Pc. Tankard Water Set – Dk. Mari. (very scarce and desirable; nice dark color and irid.)
- _____ 65. **N ACORN BURRS 8 PC. PUNCH SET – PURP. (RARE AND DESIRABLE SET; TOP HAS BRIGHT YELLOW IRID.)**
- _____ 66. **N ACORN BURRS 4 PC. TABLE SET – PURP. (RARE AND DESIRABLE; WELL MATCHED SATINY FINISH)**
- _____ 67. N Acorn Burrs 7 Pc. Berry Set – Purp. (very scarce and desirable set; nice)
- _____ 68. (4) N Acorn Burrs Tumblers – Purp. (all nice examples; selling choice)
- _____ 69. N Raspberry Handled Milk Pitcher – White (extremely rare and a beaut; has a damage under base near mold line)
- _____ 70. **N DANDELION 7 PC. TANKARD WATER SET – GREEN (AN EXTREMELY RARE AND BEAUTIFUL SET; MANUF. SPLITTING ON LIP)**
- _____ 71. N Springtime 7 Pc. Berry Set – Dk. Mari. (actually a rare set; great color and irid.)
- _____ 71A. **N SPRINGTIME 6 PC WATER SET – DK. MARI. (RARE AND POPULAR SET; DARK COLOR W/ GREAT IRID.)**
- _____ 72. (2) N Star of David and Bows Domed Ruffled Bowls – Amyth. (both are satiny; selling choice)
- _____ 73. 7-1/2" N Fruit and Flowers Flat Plate w/ Basketweave Ext. – Mari. (scarce w/ a satiny finish)
- _____ 74. N Three Fruits Plate w/ Basketweave Ext. – Purp. (scarce; has a bright yellow finish)
- _____ 75. **N THREE FRUITS STIPPLED PLATE W/ RIBBED EXT. – ELEC. BLUE (A SUPER ITEM W/ BRIGHT BLUE HIGHLIGHTS; A BEAUTY!)**
- _____ 76. **N THREE FRUITS STIPPLED 8 RUFFLED BOWL W/ RIBBED EXT. – AQUA OPAL. (RARE AND DESIRABLE; NICE OPAL. W/ GOLDISH HIGHLIGHTS)**
- _____ 77. **N THREE FRUITS STIPPLED 8 RUFFLED BOWL W/ RIBBED EXT. – GREEN (RARE AND DESIRABLE ITEM; HAS A NICE GOLDISH FINISH)**
- _____ 78. **N THREE FRUITS FLAT PLATE W/ PLAIN EXT. – AMYTH. (A SUPER EXAMPLE W/ BRIGHT MULTI-COLORED IRID.)**
- _____ 79. N Strawberry Flat Plate w/ Basketweave Ext. – Amyth. (very scarce; flat w/ a bright finish; nice)
- _____ 80. **N HEARTS AND FLOWERS FLAT PLATE W/ RIBBED EXT. – DK. MARI. (RARE AND VERY DESIRABLE; NICE DARK FINISH)**
- _____ 81. **N WISHBONE FTD. PLATE W/ RUFFLES AND RINGS EXTERIOR – MARI. (RARE AND VERY DESIRABLE; NICE SATINY FINISH)**
- _____ 82. N Wishbone Ftd. 8 Ruffled Bowl w/ Ruffles and Rings Ext. – Green (very desirable; has a rich color and irid. finish)
- _____ 83. **N ROUND HANDLED BUSHEL BASKET – LIME ICE GREEN (VERY RARE BASE COLOR; VERY DESIRABLE AND DARK)**
- _____ 84. **N CORN VASE W/ STALK BASE – ICE GREEN (VERY SCARCE AND DESIRABLE; HAS A SLIGHT MARI. OVERLAY)**
- _____ 85. **N POPPY RELISH TRAY W/ RIBBED EXT. – AQUA/ MARI. (VERY RARE BASE COLOR W/ NO OPAL.; REALLY TOUGH!)**

86. **N IVY TOWN PUMP NOVELTY – PURP. (RARE AND DESIRABLE ITEM; HAS AVERAGE IRID. W/ GOLD HIGHLIGHTS)**
87. **8-1/4" TALL N DRAPERY SWUNG VASE – LIME ICE GREEN (RARE BASE COLOR; NICE IRID. W/ PERFECT FEET)**
88. 7-1/2" Tall N Drapery Swung Vase – Ice Green (very scarce w/ perfect feet; has one sharp point)
89. 8" Tall N Drapery Swung Vase – Blue (very scarce item w/ perfect feet and bright multi-colored irid.)
90. **(2) N DAISY AND DRAPE FTD. FLARED VASES – DK. MARI. (RARE W/ THE FLARE; BOTH EXAMPLES ARE DARK AND PERFECT; SELLING CHOICE)**
91. N Oriental Poppy 7 Pc. Tankard Water Set – Mari. (very scarce and well matched; nice irid.)
92. N Raspberry 7 Pc. Water Set – Purp. (scarce and desirable; pitcher is bright and satiny)
93. N Memphis 7 Pc. Fruit Bowl Set, Mismatched – Purp./ Green (purple top and 2 cups; green base and 3 cups)
94. 7-1/4" Tall N Drapery Swung Vase – Dk. Mari. (great color and irid.; very dark item)
95. **N CORN VASE W/ STALK BASE – GREEN (RARE AND VERY DESIRABLE; DARK W/ GREAT IRID.)**
96. **N CORN VASE W/ PLAIN BASE – PURP. (RARE ITEM; DARK BASE COLOR W/ GOLDISH HIGHLIGHTS)**
97. N Corn Vase w/ Stalk Base – Ice Green (very scarce and desirable; average irid.)
98. N Corn Vase w/ Plain Base – White (very scarce and desirable; average irid.)
99. N Corn Vase w/ Plain Base – Mari. (average example of this rare item; cracked)
100. **N TORNADO SMALL SIZED VASE – PURP. (EXCELLENT EXAMPLE; PERFECT W/ NICE IRID.)**
101. 8-3/4" N Thin Rib "Jesters Cap" J.I.P. Vase – Purp. (rare shape for this item; very attractive)
102. **12-1/2" TALL X 4-3/4" BASE N THIN RIB MID SIZE SWUNG VASE – WHITE (VERY SCARCE AND VERY DESIRABLE; GREAT IRID.)**
103. 13-1/4" Tall x 4-1/2" Base N Tree Trunk Mid Size Swung Vase – Mari. (very scarce; nice dark color; a bit lighter at the base)
104. N Peacock at the Fountain Spooner – Green (rare item but cracked)
105. **N PEACOCK AT THE FOUNTAIN FTD. RUFFLED FRUIT BOWL – ELEC. BLUE (A SUPER EXAMPLE THAT LOOKS BLUE; A GREAT ITEM)**
106. **N PEACOCK AT THE FOUNTAIN STEMMED 6 RUFFLED COMPOTE – BLUE (RARE AND VERY DESIRABLE; PERFECT W/ BLUE HIGHLIGHTS)**
107. N Peacocks Bowl w/ P.C.E. and Ribbed Ext. – Blue (very scarce and desirable; irid. uneven; blue/silver)
108. N Peacocks Bowl w/ P.C.E. and Ribbed Ext. – Mari. (very scarce; nice even color and irid.)
109. N Peacocks Plate w/ Ribbed Ext. – Lime Ice Green (sorta on the border; base color a bit darker)
110. **N PEACOCKS RUFFLED BOWL W/ RIBBED EXT. – AQUA OPAL. (RARE AND DESIRABLE; NICE PASTEL EXAMPLE W/ AVERAGE IRID.)**
111. **N PEACOCK AT THE URN ALL OVER STIPPLED LG. ICE CREAM BOWL – DK. MARI. (SUPER, SUPER EXAMPLE; DARK AND A BEAUTY!)**
112. **10-1/2" N PEACOCK AT THE URN ALL OVER STIPPLED LG. 8 RUFFLED BOWL – MARI. (RARE ITEM IN A RARE SHAPE; NICE IRID.)**
113. **N PEACOCK AT THE URN LG. ICE CREAM BOWL – AMYTH. (HAS A RADIUM TYPE FINISH W/ BLUE AND RED HIGHLIGHTS)**
114. (6) N Peacock at the Urn Ind. Ice Cream Bowls – Purp. (selling choice; all have satiny irid.)
115. **N PEACOCK AT THE URN ALL OVER STIPPLED LG. ICE CREAM BOWL – "SMOKE" (EXTREMELY RARE BASE COLOR W/ SUPER IRID.; REALLY NICE)**
116. **10-10-1/2" N PEACOCK AT THE URN LG. 8 RUFFLED BOWL – PURP. (VERY RARE IN THIS COLOR; HAS BRIGHT MULTI-COLORED IRID.)**
117. N Poppy Ruffled Relish Tray w/ Ribbed Ext. – Blue (scarce; nice multi-colored irid.)
118. N Wishbone Single Lily Epergne – Purp. (rare and desirable; exterior of lily is light)
119. N Paneled Holly 2 Handled Candy Dish – Mari. (satiny finish)
120. **N THREE FRUITS STIPPLED PLATE W/ RIBBED EXT. – SAPPHIRE (RARE AND DESIRABLE; GREAT BASE COLOR W/ NICE IRID.; THESE ARE GETTING TOUGH)**
121. N Three Fruits Stippled Plate w/ Ribbed Ext. – Mari. (very scarce and desirable; has wear on fruit)
122. **N THREE FRUITS 8 RUFFLED BOWL W/ PLAIN EXT. – PASTEL MARI. (HAS SUPER IRID. ON AN ODD BASE COLOR)**
123. N Good Luck Plate w/ Basketweave Ext. – Purp. (rare and desirable; has average satiny irid.)
124. N Good Luck 8 Ruffled Bowl w/ Ribbed Ext. – Purp. (scarce w/ average irid.)
125. **N GOOD LUCK BOWL W/ P.C.E. AND RIBBED EXT. – PURP. (A VERY ATTRACTIVE EXAMPLE W/ REDS AND BLUES)**
126. N Fine Cut and Roses Ftd. Rose Bowl w/ Fancy Int. – White (rare and desirable; has some rough feet)
127. N Fine Cut and Roses Ftd. Rose Bowl w/ Fancy Int. – Ice Blue (rare and desirable; minor roughness on feet)
128. N Fine Cut and Roses Ftd. Rose Bowl – Green (nice example; nice color and irid.)
129. N Fine Cut and Roses Ftd. Rose Bowl – Dk. Mari. (sorta dark w/ pink highlights)
130. **N POPPY SHOW FLARED PLATE – DK. MARI. (A SUPER EXAMPLE; DARK W/ RED HIGHLIGHTS; REALLY NICE)**
131. **N ROSE SHOW 8 RUFFLED BOWL – DK. MARI. (VERY SCARCE AND VERY DESIRABLE; HAS YELLOW AND RED IRID.)**
132. N Rose Show 8 Ruffled Bowl – White (very scarce; frosty w/ nice irid.)
133. N Nippon 8 Ruffled Bowl w/ Ribbed Ext. – White (very scarce and attractive item; very desirable)
134. N Embroidered Mums 8 Ruffled Bowl w/ Ribbed Ext. – Amyth. (scarce color and a very desirable pattern; goldish)
135. **N LEAF AND BEADS FTD. ROSE BOWL – AQUA OPAL. (ONE OF THE BETTER EXAMPLES I'VE SEEN; SUPER BUTTERSCOTCH EXAMPLE)**
136. N Greek Key 8 Ruffled Bowl w/ Basketweave Ext. – Pastel Mari. (very scarce; light base color w/ really nice highlights)
137. N Octet Domed 8 Ruffled Bowl w/ Vintage Ext. – Green (excellent example of a very scarce pattern)
138. **N G & C BANDED FTD. HATPIN HOLDER – PURP. (RARE AND DESIRABLE; REALLY NICE HIGHLIGHTS)**
139. **N G & C 2 PC. CANDLELAMP – PURP. (RARE AND DESIRABLE; NICE SATINY FINISH)**
140. **N G & C 2 PC. CANDLELAMP – GREEN (RARE AND DESIRABLE; NICE SATINY FINISH)**
141. **N G & C 2 PC. CANDLELAMP – MARI. (RARE AND DESIRABLE; NICE SATINY FINISH)**
142. N G & C Ftd. Hatpin Holder – Purp. (very scarce w/ nice color and desirable)
143. N G & C Ftd. Hatpin Holder – Pastel Mari. (light base color w/ really nice irid.; scarce)
144. N G & C Stippled Handled Punch Cup – Renninger Blue (very scarce base color; goldish)
145. **N G & C 14 PC. FLARED MASTER PUNCH SET – PURP. (EXTREMELY RARE AND VERY DESIRABLE; A BEAUTY W/ THE FLARE)**

- _____ 146. **N G & C 14 PC. MASTER PUNCH SET – PURP. (ANOTHER SUPER EXAMPLE; GREAT MULTI-COLORED IRID. W/ GOLD HIGHLIGHTS)**
- _____ 147. N G & C Covered Compote – Purp. (very scarce and very desirable; nice irid.)
- _____ 148. N G & C Covered Compote – Purp. (another scarce example; has chip under rim of lid)
- _____ 149. N G & C 7 Pc. Berry Set – Purp. (scarce; nice color and irid.)
- _____ 150. **N G & C LG. RUFFLED OPEN COMPOTE – DK. MARI. (RARE AND DESIRABLE W/ NICE REDDISH HIGHLIGHTS)**
- _____ 151. N G & C Ftd. Oval Banana Boat – Purp. (scarce w/ super color and irid.)
- _____ 152. N G & C Ftd. Oval Banana Boat – Purp. (another very attractive example w/ great irid.)
- _____ 153. N G & C Ftd. Oval Banana Boat – Dk. Mari. (dark and very attractive; has sharp point on one end)
- _____ 154. N G & C Stemmed Sherbet – Purp. (nice color and irid.)
- _____ 155. **N G & C 5 PC. WATER SET – GREEN (RARE SET W/ NICE SATINY FINISH)**
- _____ 156. N G & C 7 Pc. Water Set – Purp. (scarce set w/ very attractive color and irid.)
- _____ 157. N G & C Tumbler – Purp. (super electric irid.)
- _____ 158. (5) N G & C Tumblers – Mari. (nice color; selling so much each for set)
- _____ 159. N G & C Breakfast Sugar and Creamer – Purp. (satiny finish; has slight internal wear)
- _____ 160. **N G & C FTD. CENTERPIECE BOWL – PURP. (VERY SCARCE AND DESIRABLE; SATINY FINISH)**
- _____ 161. N G & C Ftd. Ruffled Small Size Fruit Bowl – Purp. (another attractive multi-colored item)
- _____ 162. N G & C Covered Cracker Jar – Purp. (scarce w/ great color; has chips on top rim of base)
- _____ 163. N G & C Covered Cracker Jar – Mari. (nice color and irid.; very scarce)
- _____ 164. N G & C Covered Sweetmeat Compote – Purp. (scarce item w/ nice color and irid.)
- _____ 165. N G & C 4 Pc. Table Set – Purp. (very scarce set; nice color and irid.)
- _____ 166. N G & C Cologne Bottle, No Stopper – Purp. (satiny finish)
- _____ 167. 11" N G & C Lg. 6 Ruffled Master Berry Bowl w/ Basketweave Ext. – Purp. (super multi-colored irid.; very attractive)
- _____ 168. N G & C Variant Bowl w/ P.C.E. and Basketweave Ext. – Green (has nice bright satiny multi-colored irid.)
- _____ 169. N G & C 8 Ruffled Bowl w/ Basketweave Ext. – Green (satiny and nice)
- _____ 170. N G & C Plate w/ Basketweave Ext. – Purp. (nice example w/ a satiny finish)
- START OF SECOND SESSION**
- _____ 171. N G & C 6 Ruffled Hat Shape – Green (scarce in this color)
- _____ 172. **M'BURG LEAF AND LITTLE FLOWERS STEMMED FLARED COMPOTE – MARI. (VERY SCARCE AND DESIRABLE; SATINY FINISH)**
- _____ 173. M'burg Swirl Hobnail Rose Bowl – Purp. (very scarce; nice example w/ bright irid.)
- _____ 174. M'burg Swirl Hobnail Rose Bowl – Mari. (very scarce; satiny finish)
- _____ 175. **M'BURG HOBNAIL SPITTOON – AMYTH. (RARE AND DESIRABLE; HAS A LIGHTER BASE COLOR)**
- _____ 176. **M'BURG SWIRL HOBNAIL SPITTOON – MARI. (RARE AND DESIRABLE; NICE COLOR AND IRID.)**
- _____ 177. M'burg Diamond Handled Water Pitcher – Amyth. (nice color and irid.; has manuf. roughness on base)
- _____ 178. 10" M'burg Strawberry Wreath Lg. 6 Ruffled Bowl – Amyth. (a beauty of a bowl; radium; has smoothed spot on edge)
- _____ 179. **9-3/4" M'BURG PEACOCK LG. 6 RUFFLED BOWL – AMYTH. (RADIUM AND RARE; HAS NO BEE AND NO BEADING; REALLY NICE)**
- _____ 180. M'burg Hanging Cherries 4 Pc. Table Set – Amyth. (very attractive set; may have a couple small dings here or there)
- _____ 181. 9-1/2" M'burg Zig Zag 6 Ruffled Bowl – Amyth. (very scarce and very desirable; radium and super)
- _____ 182. 9" M'burg Trout and Fly Bowl w/ 3 in 1 Edge – Amyth. (very scarce and desirable; nice satiny finish)
- _____ 183. **CAMBRIDGE INVERTED STRAWBERRY LG. OPEN COMPOTE – AMYTH. (VERY RARE AND DESIRABLE; NICE MASSIVE ITEM)**
- _____ 184. **CAMBRIDGE INVERTED STRAWBERRY TUMBLER – AMYTH. (VERY DESIRABLE; NICE RADIUM TYPE IRID.)**
- _____ 185. Cambridge Inverted Strawberry 6 Pc. Berry Set – Amyth. (actually quite a scarce set; nice item)
- _____ 186. Cambridge Inverted Thistle Water Pitcher – Amyth. (cracked but one very attractive item)
- _____ 187. 7-3/4" M'burg Little Stars 6 Ruffled Bowl – Green (scarce and satiny; has manuf. splits on edge)
- _____ 188. 8-1/2" M'burg Holly Sprig 6 Ruffled Crimped Edge Bowl – Green (super radium finish; really attractive)
- _____ 189. 9-3/4" Tall M'burg Swirl Hobnail Swung Vase – Green (rare and desirable; great color and irid.)
- _____ 190. **9-1/2–3/4" M'BURG FLEUR DE LEI ODD 6 RUFFLED CRIMPED EDGE BOWL – AMYTH. (RADIUM AND DESIRABLE; REALLY ODD SHAPE)**
- _____ 191. 7-1/4" M'burg Peacock at the Urn "Shotgun" Bowl w/ 3 in 1 Edge – Amyth. (rare example; radium that gets a bit silvery in the middle)
- _____ 192. 9-1/2" M'burg Rays and Ribbons 6 Ruffled Bowl – Amyth. (nice satiny finish)
- _____ 193. 8-3/4" M'burg Trout and Fly Bowl w/ 3 in 1 Edge – Mari. (very scarce and desirable; satiny finish)
- _____ 194. 10" M'burg Rosiland Lg. 6 Ruffled Bowl – Mari. (nice satiny example w/ great irid.)
- _____ 195. **IMPERIAL BROKEN ARCHES 8 PC. PUNCH SET – PURP. (RARE AND DESIRABLE SET; NICE IRID.; BASE IS DAMAGED)**
- _____ 196. Imperial Broken Arches 13 Pc. Punch Set – Mari. (scarce set; well matched and nice)
- _____ 197. Imperial Hobstar 4 Pc. Table Set – Mari. (nice set w/ great color and irid.)
- _____ 198. Imperial Hobstar Covered Cracker Jar – Mari. (nice color and irid.)
- _____ 199. Imperial Poinsettia Handled Milk Pitcher – Mari. (average color and irid.)
- _____ 200. **IMPERIAL FLUTE CELERY VASE – PURP. (VERY RARE AND VERY DESIRABLE; SUPER IRID.)**
- _____ 201. Imperial Flute Breakfast Sugar and Creamer – Purp. (super color and irid.)
- _____ 202. Imperial Flute Toothpick Holder – Purp. (nice color and irid.)
- _____ 203. 7-1/2" Imperial Embossed Scroll 6 Ruffled Bowl – Purp. (super irid., w/ bright reddish highlights)
- _____ 204. Imperial Hobstar Flower Stemmed 6 Ruffled Compote – Purp. (scarce pattern w/ bright irid.)
- _____ 205. **IMPERIAL GRAPE 8 PC. WINE SET – PURP. (VERY SCARCE AND DESIRABLE SET; NICE)**
- _____ 206. Imperial Grape 8 Pc. Wine Set – Dk. Mari. (attractive set w/ nice color and irid.)
- _____ 207. 7" Imperial Open Rose Round Ftd. Bowl – Amyth. (very scarce item; has light base color; nice)
- _____ 208. Imperial Robin Handled Mug – Mari.
- _____ 209. Imperial Ribbed J.I.P. Vase – Dk. Mari. (super irid.)
- _____ 210. **IMPERIAL OCTAGON STEMMED JELLY COMPOTE – PURP. (RARE AND DESIRABLE; GREAT COLOR AND IRID.; SMALL SMOOTH SPOT ON BASE)**
- _____ 211. **14-1/2" TALL X 4" BASE IMPERIAL RIPPLE LG. SWUNG VASE – PURP. (SUPER COLOR AND IRID.; GREAT SIZE)**
- _____ 212. 10-1/2" Tall x 4" Base Imperial Ripple Squatty Swung Vase – Purp. (super color and irid.; nice squatty example)
- _____ 213. 11-1/2" Tall x 3-1/4" Base Imperial Ripple Swung Vase – Purp. (super example; nice color and irid.)
- _____ 214. 9" Tall x 3-1/4" Base Imperial Ripple Swung Vase – Purp. (another attractive example; nice)
- _____ 215. **IMPERIAL DIAMOND LACE 7 PC. WATER SET – PURP. (SCARCE SET; HAS BRIGHT IRID.; VERY ATTRACTIVE)**
- _____ 216. 7-3/4" Imperial Heavy Grape Flared Plate – Purp. (nice bright multi-colored irid.; scarce)

217. 11-1/2" IMPERIAL HEAVY GRAPE CHOP PLATE – PURP. (RARE AND VERY DESIRABLE; SUPER IRID.; ONE OF THE BETTER EXAMPLES)
218. 9" Imperial Hattie Lg. 8 Ruffled Bowl – Purp. (super example; great color and irid.)
219. IMPERIAL EMBOSSED SCROLL MINIATURE ROUND STEMMED COMPOTE – PURP. (RARE AND VERY DESIRABLE; SUPER IRID.; NICE)
220. IMPERIAL LOGANBERRY VASE – SMOKE (EXTREMELY RARE ITEM; SUPER COLOR AND IRID.)
221. 5-1/4" TALL IMPERIAL FILE WHIMSEY VASE – MARI. (QUITE A RARE ITEM; TOUGH TO FIND; NICE)
222. 12-3/4" Tall x 5" Base x 9" Flare Morning Glory Swung Funeral Vase – Dk. Mari. (super color and irid.; nice massive item)
223. 8-1/2" Tall x 6" Flare Imperial Interior Wide Panel Swung Vase – Mari./ Milk Glass (scarce item w/ nice mari. overlay)
224. 3-3/4" Tall Imperial Interior Wide Panel Rose Bowl – Mari./ Milk Glass (scarce; has wear on interior)
225. 8-1/2" TALL X 4-1/2" BASE IMPERIAL ZIPPER LOOP STANDARD KEROSENE LAMP – DK. MARI. (SUPER EXAMPLE; VERY ATTRACTIVE)
226. Dugan Nautilus 2 Sided Whimsey Open Sugar – P. Opal. (very attractive example; has slight odd shape)
227. (2) Dugan Honeycomb Rose Bowls – P. Opal. (very scarce items; fair opal.; great irid.; selling choice)
228. Dugan Mary Ann Handled Vase – Mari. (nice satiny finish)
229. 8-1/4" Tall Dugan Twigs Swung Bud Vase – Amyth. (satiny finish)
230. DUGAN MANY FRUITS ROUND PUNCH BOWL AND BASE – PURP. (RARE SHAPE; VERY DESIRABLE; GREAT MULTI-COLORED IRID.)
231. Dugan Grape Delight Round Ftd. Rose Bowl – Purp. (super bright irid.; nice)
232. Dugan Grape Delight Ruffled Ftd. Rose Bowl – Blue (nice satiny finish)
233. Dugan Beaded Shell Handled Mug – Amyth. (nice color w/ bright irid.)
234. Dugan Floral and Grape Tumbler – Amyth. (nice bright irid.)
235. DUGAN GRAPEVINE LATTICE 7 PC. TANKARD WATER SET – AMYTH. (RARE AND VERY DESIRABLE SET; SATINY; TOUGH!)
236. Dugan Fisherman's Handled Mug, Enam. Souvenir "Compliments of Kaufman's – Harrisburg, PA" – Amyth. (a bit different w/ the enam. advert.)
237. Dugan Fisherman's Handled Mug – Purp. (nice color and irid.)
238. Dugan Paneled Cherries Ftd. 2 Sided Ruffled Bowl – Purp. (scarce shape; nice irid.; chipped on feet)
239. 9-3/4" Tall Dugan Spiralx Swung Vase – P. Opal. (nice opal.)
240. 11-1/4" DUGAN VICTORIAN LG. 6 RUFFLED BOWL – PURP. (RARE AND UNDERPRICED; SATINY FINISH)
241. 10-1/2" Dugan Cosmos Variant Lg. 6 Ruffled Bowl – Amyth. (satiny finish)
242. Dugan Maple Leaf Master Berry Bowl and (3) Ind. Berry Bowls – Purp. (nice bright irid.; selling as a set)
243. 9" Dugan Raindrops Domed 10 Ruffled Bowl – P. Opal. (light irid.; nice opal.)
244. 8" Dugan Apple Blossom Twigs I.C. Shaped Bowl – P. Opal. (nice opal. and irid.)
245. DUGAN AMARYLLIS DEEP FLARED FTD. MINIATURE COMPOTE – DK. MARI. (RARE AND VERY DESIRABLE; TOUGH SHAPE; GREAT IRID.)
246. 9-1/2" Dugan Fanciful Flared Plate – Blue (rare base color; satiny finish)
247. 9" Dugan Windflower Flat Plate – Dk. Mari. (actually quite nice; one of the better I've seen)
248. Dugan Grape Arbor Lg. Round Ftd. Bowl w/ I.F.&F. Ext. – Dk. Mari. (nice dark satiny finish)
249. 6-1/2" Dugan Four Flowers Flat Plate – P. Opal. (scarce w/ nice opal.)
250. DUGAN DAHLIA FTD. WATER PITCHER – WHITE (RARE AND VERY DESIRABLE; FROSTY AND NICE)
251. Dugan Butterfly and Tulip 2 Sided Lg. Ftd. Bowl w/ I.F.&F. Ext. - Mari. (scarce shape; above average irid.)
252. 9-1/2" Dugan Double Stem Rose Domed Flared Plate – White (very scarce; nice and frosty)
253. 8-1/2" Dugan Apple Blossom Twigs Low 10 Ruffled Bowl/ Plate – Purp. (a beauty w/ bright multi-colored irid.)
254. 8-1/2" Dugan Apple Blossom Twigs Low 10 Ruffled Bowl/ Plate – Amyth. (odd tint; sorta pastel w/ gold highlights)
255. 8-3/4" Dugan Raindrops Domed 10 Ruffled Bowl – Amyth. (rare base color w/ satiny gold finish)
256. DUGAN BROOKLYN BRIDGE 10 RUFFLED BOWL – DK. MARI. (RARE AND DESIRABLE; HAS RADIUM TYPE IRID.)
257. 8" Dugan Lined Lattice Swung Vase – Purp. (really dark base color; great irid.)
258. Dugan Nautilus Novelty Open Sugar – Purp. (very scarce novelty; nice color and irid.)
259. Dugan Daisy and Lattice Tumbler – Blue (rare color for this item; has bright irid.)
260. DUGAN FISHERMAN'S HANDLED MUG – DK. MARI. (RARE COLOR; HAS BRIGHT YELLOW HIGHLIGHTS)
261. Dugan Floral and Grape Tumbler – Amyth. (nice bright irid.)
262. (5) Dugan Wreath Cherry Ind. Oval Berry Bowls – Amyth. (nice examples; selling so much each)
263. 7-1/4" Dugan Ribbed Swung Vase – P. Opal. (great opal. and mari. overlay)
264. 8-1/4" Dugan Double Stem Rose Domed I.C. Shaped Bowl – Amyth. (satiny irid.)
265. 8-1/4" Westmoreland Daisy Wreath 6 Ruffled Bowl – Blue Opal. (very scarce and desirable; nice opal.)
266. 8-1/2" Westmoreland Scales 6 Ruffled Bowl – Blue Opal. (nice color and opal.; very scarce)
267. Westmoreland Orange Peel 8 Pc. Punch Set – Mari. (scarce set; perfect)
268. Westmoreland Louisa Ftd. Rose Bowl – Amyth.
269. European Rose Marie Fernery – Blue
270. MAKER (?) DAISY AND BUTTON MINIATURE LAMP W/ SHADE – PEARLIZED MILK GLASS (RARE AND UNUSUAL; NICE IRID. AND PERFECT)
271. Sowerby Covered Hen Butter Dish – Mari. (nice color; scarce)
272. Sowerby Pineapple Rose Bowl – Dk. Mari. (nice dark color)
273. 9" Fenton Peacock and Grape 8 Ruffled Bowl – Amyth. (nice bright irid.; attractive)
274. 7-3/4" Fenton Peacock and Grape I.C. Shaped Bowl – Blue (nice color and irid.; has sharp point)
275. FENTON ORANGE TREE HANDLED LOVING CUP – GREEN (SUPER EXAMPLE; PERFECT W/ BRIGHT IRID.)
276. Fenton Orange Tree Handled Loving Cup – Blue (very scarce base color; perfect and nice)
277. Fenton Little Flowers 7 Pc. Flared Berry Set – Blue (quite a scarce set w/ bright irid.)
278. 9" Fenton Chrysanthemum 8 Ruffled Bowl – Blue (scarce; satiny)
279. Fenton Holly 6 Ruffled Hat – Powder Blue/ Mari. (odd base color and finish)
280. 10" FENTON STAG AND HOLLY LG. I.C. SHAPED FTD. BOWL – AMYTH. (RARE COLOR FOR THIS ITEM; GOLDISH FINISH)
281. Fenton Orange Tree Scroll Tumbler – Blue (scarce w/ bright irid.)
282. Fenton Orange Tree Orchard Tumbler – Blue (another scarce item w/ bright irid.)
283. Fenton Orange Tree Standard Flared Handled Mug – Elec. Blue (super irid.)
284. Fenton Leaf Tiers Ftd. Tumbler – Mari. (scarce; perfect)
285. FENTON BLACKBERRY SPRAY CRIMPED EDGE J.I.P. HAT – RED (RARE ITEM; GREAT SHAPE AND COLOR W/ DARKER IRID.)
286. FENTON HOLLY 6 RUFFLED HAT – RED (RARE; NICE COLOR W/ A DARKER FINISH)
287. FENTON BLACKBERRY SPRAY 4 SIDED HAT – RED (ANOTHER VERY SCARCE ITEM; NICE SHAPE AND COLOR)
288. Fenton Holly 4 Sided Hat – Amber (very scarce base color for this item)
289. Fenton 2 Row Open Edge J.I.P. Hat – Mari./ Vaseline (attractive base color)

- _____ 290. 9-1/2" Fenton Vintage Grape Lg. 8 Ruffled Bowl – Mari./ Vaseline (rare color for this item, light irid.)
- _____ 291. 5-1/4" Fenton Persian Medallion I.C. Shaped Sauce – Aqua (very scarce base color for this item)
- _____ 292. 9-1/2" Fenton Three Fruits Flat Plate – Amyth. (nice bright example; scarce)
- _____ 293. Fenton Pastel Swan – Celeste Blue (nice color)
- _____ 294. Fenton Miniature Blackberry Compote – Blue (scarce; satiny)
- _____ 295. **FENTON STRETCH COVERED DRESSER JAR – WISTERIA (RARE ITEM IN ANY COLOR; VERY DESIRABLE)**
- _____ 296. **PAIR 8-1/4" TALL X 4-1/2" BASE STRETCH CYLINDER CANDLESTICKS – WISTERIA (NOT SURE WHO MADE THESE; VERY RARE PAIR)**
- _____ 297. Fenton Holly Stemmed 6 Ruffled Compote – Blue (satiny)
- _____ 298. 9-3/4" Fenton Holly Flat Plate – Mari. (scarce; satiny)
- _____ 299. 7-1/2" Fenton Vintage Grape Plate – Blue (scarce; silvery)
- _____ 300. **9-1/4" FENTON CAPTIVE ROSE PLATE – AMYTH. (RARE AND DESIRABLE; VERY NICE EXAMPLE W/ BRIGHT COLOR AND IRID.)**
- _____ 301. **9-1/2" FENTON LEAF CHAIN FLAT PLATE – DK. MARI. (RARE EXAMPLE W/ BRIGHT MULTI-COLORED IRID.)**
- _____ 302. **9-1/2" FENTON PERSIAN MEDALLION FLAT PLATE – BLUE (VERY SCARCE AND DESIRABLE; SATINY IRID.)**
- _____ 303. (2) 6-1/2" Fenton Little Flowers Flat Plate – Mari. (selling choice; nice satiny finish)
- _____ 304. 7-1/2" Fenton Stippled Rays Flat Plate – Lt. Amber (odd base tint)
- _____ 305. **9" FENTON VINTAGE GRAPE FLAT PLATE – DK. MARI. (EXTREMELY RARE ITEM; SATINY W/ RED, YELLOW AND BLUE IRID.)**
- _____ 306. Fenton G&C Ftd. Fruit Bowl w/ Persian Medallion Int. – Blue (scarce item w/ a satiny finish)
- _____ 307. 9-1/2" Fenton Vintage Grape Lg. Ice Cream Bowl – Blue (satiny irid.)
- _____ 308. Fenton Orange Tree Handled Shaving Mug – Blue (super color and irid.)
- _____ 309. Fenton Orange Tree Handled Flared Standard Mug – Blue (super color and irid.)
- _____ 310. **FENTON ORANGE TREE ORCHARD 7 PC. BULBOUS WATER SET – BLUE (VERY RARE AND DESIRABLE SET; REALLY TOUGH TO FIND)**
- _____ 311. Fenton Orange Tree 8 Pc. Ruffled Punch Set – Blue (scarce set; nice bright irid.; perfect)
- _____ 312. Fenton Orange Tree Punch Top Only – White (scarce part; frosty finish)
- _____ 313. Fenton Flowers Ftd. Rose Bowl – White (light color; rare item)
- _____ 314. Fenton Orange Tree Breakfast Sugar and Creamer – Mari. (satiny set)
- _____ 315. **FENTON ORANGE TREE HANDLED LOVING CUP – AMYTH. (RARE AND DESIRABLE; NICE COLOR AND IRID.)**
- _____ 316. **FENTON ORANGE TREE HANDLED LOVING CUP – DK. MARI. (VERY SCARCE; SUPER BRIGHT COLOR AND IRID.)**
- _____ 317. **FENTON MIKADO LG. 8 RUFFLED COMPOTE – BLUE (RARE AND DESIRABLE; HAS MULTI-COLORED IRID.)**
- _____ 318. Fenton Mikado Lg. Flared Compote – Dk. Mari. (very scarce; nice bright irid.)
- _____ 319. Fenton Persian Medallion Hair Receiver - Mari. (nice color and irid.)
- _____ 320. **8-1/2" TALL FENTON 2 ROW OPEN EDGE BLACKBERRY WHIMSEY SWUNG VASE – BLUE (EXTREMELY RARE ITEM W/ NICE COLOR AND IRID.; HAS ROUGH SPOT ON TOP EDGE)**
- _____ 321. 9-1/2" Tall Fenton Fine Rib Standard Swung Vase – Red (rare and desirable; has dark irid.)
- _____ 322. **18-1/2" TALL X 5-1/4" BASE FENTON RUSTIC SWUNG FUNERAL VASE – BLUE (RARE AND VERY DESIRABLE; GREAT SIZE AND MULTI-COLORED IRID.)**
- _____ 323. Fenton Vintage Grape Small Size 2 Pc. Epergne – Blue (scarce; satiny)
- _____ 324. Fenton Birds and Cherries 4 Sided 2 Handled Bon Bon – Amyth. (super bright irid.; really nice item)
- _____ 325. **10" FENTON TWO FLOWERS LG. BALL FTD. 8 RUFFLED BOWL – AQUA/ SAPPHIRE (VERY RARE AND DESIRABLE ITEM; GREAT COLOR AND IRID.)**
- _____ 326. 10-1/2" Fenton Two Flowers Lg. Ball Ftd. 8 Ruffled Bowl – Dk. Mari. (not an expensive item but one of the best)
- _____ 327. 11" Fenton Two Flowers Lg. Ball Ftd. 8 Ruffled Bowl – Blue (satiny finish)
- _____ 328. Fenton Panther Ruffled Ftd. Master Berry Bowl and (3) Ind. Berry Bowls – Dk. Mari. (nice color and irid.; selling separately)
- _____ 329. Fenton Butterfly and Berry Flared Ftd. Master Berry Bowl and (3) Ind. Ruffled Bowls – Blue (really nice color and irid.; selling separately)
- _____ 330. **FENTON INVERTED COIN DOT BULBOUS WATER PITCHER AND (6) INTERIOR paneled TUMBLERS, ALL MAGNOLIA ENAMELED DECORATED - AMYTH. (EXTREMELY RARE SET; ONLY SEEN 2, BUT THIS ONE IS FOR SALE)**
- _____ 331. Fenton Butterfly and Fern 6 Pc. Bulbous Water Set – Mari. (very scarce; excellent satiny example; nice)
- _____ 332. **FENTON BOUQUET BULBOUS HANDLED WATER PITCHER – BLUE (SUPER SCARCE W/ SUPER IRID.; REALLY NICE)**
- _____ 333. Fenton Floral and Grape 6 Pc. Bulbous Water Set – Blue (very scarce; pitcher is a beaut)
- _____ 334. (2) Fenton Fentonia Ftd. Flared Ind. Berry Bowls – Blue (very scarce items; selling choice)
- _____ 335. **FENTON WREATH OF ROSES 8 PC. PUNCH SET, BOWL PLAIN INT. / CUPS VINTAGE INT. – BLUE (RARE SET; TOP NOT AS PRETTY AS THE BASE)**
- _____ 336. **FENTON WREATH OF ROSES 6 PC. PUNCH SET W/ VINTAGE GRAPE INT. – GREEN (VERY SCARCE SET; NICE AND DESIRABLE)**
- _____ 337. 7-1/2" Fenton Acorn Low 8 Ruffled Bowl – Mari./ Vaseline (scarce; very attractive item)
- _____ 338. 8-3/4" Fenton Cherry Chain Lg. I.C. Shaped Bowl – White (very scarce; frosty w/ great irid.)
- _____ 339. 10-1/4" Fenton Cherry Chain Lg. 6 Ruffled Bowl – Mari. (nice color and irid.)
- _____ 340. **9-1/2" FENTON PEACOCK AT THE URN FLAT PLATE – DK. MARI. (VERY SCARCE; BRIGHT IRID.; VERY DESIRABLE)**
- _____ 341. **FENTON ORANGE TREE STANDARD FLARED HANDLED MUG – RED (RARE AND DESIRABLE; HAS A DARKER IRID.)**
- _____ 342. Fenton Vintage Grape Ftd. Fern Dish – Red/ Amberina (very scarce; bright irid. really nice)
- _____ 343. 1911 Atlantic City BPOE Elks Bell – Blue (damaged at handle; has a glue job)
- _____ 344. **9" FENTON G&C BALL FTD. FLAT PLATE – AMYTH. (QUITE A RARE ITEM; VERY ATTRACTIVE)**
- _____ 345. Fenton Footed Orange Tree 7 Pc. Water Set – Blue (rare and desirable; probably has some foot damage)
- _____ 346. Fenton Footed Orange Tree 4 Pc. Table Set – Dk. Mari. (rare set; well matched; nice dark color)
- _____ 347. Fenton Orange Tree Lg. Ftd. Ruffled Fruit Bowl – Blue (scarce; satiny irid.)
- _____ 348. 9-3/4" Fenton Little Fishes Lg. Ftd. Ruffled Bowl – Dk. Mari. (really nice color w/ bright irid.)
- _____ 349. 10" Fenton Stag and Holly Lg. Ball Ftd. 8 Ruffled Bowl – Mari. (satiny finish)
- _____ 350. Fenton Thistle Ftd. Oval Banana Boat – Dk. Mari. (very scarce; dark color w/ bright irid.)
- _____ 351. (2) Fenton Apple Tree Tumblers – Mari. (selling choice)
- _____ 352. 4-3/4" Fenton Stretch Miniature Cupped Rose Bowl – Celeste Blue (cute size)
- _____ 353. 10" Fenton Stretch Thin Ribbed Domed Turned In Console Bowl – Velva Rose (very scarce pattern to find; nice)
- _____ 354. 10-1/2" Fenton Stretch Mellon Rib Lg. 8 Ruffled Bowl – Ice Green (nice color and irid.)
- _____ 355. 11-1/4"-11-1/2" Fenton Stretch Mellon Rib Lg. Flared Console Bowl – Velva Rose
- _____ 356. 7-1/2" Fenton Stretch Mellon Rib Round Flared Bowl – Ice Green
- _____ 357. 9-1/2" N'wood Stretch Plain Deep Round Flared Bowl – Vaseline



BURNS

AUCTION SERVICE
P.O. BOX 608 • BATH, NEW YORK 14810

First Class Mail
U.S. Postage
PAID
Eugene, Oregon
Permit No. 305

Mid-Atlantic Carnival Glass Jamboree Auction



**Friday & Saturday
October 27 & 28, 2000**

Friday:

Preview – 3:00 P.M. to 6:30 P.M.
Auction – 6:30 P.M. (Lots 1-170)

Saturday:

Preview – 8:00 A.M. to 9:00 A.M.
Auction – 9:00 A.M. (Lots 171-End)

