



# AIR CAPITAL



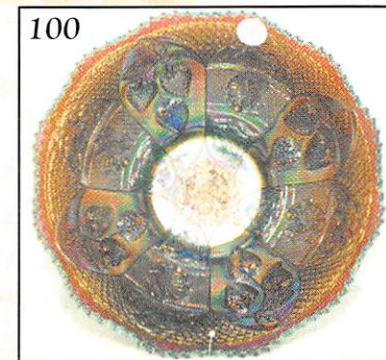
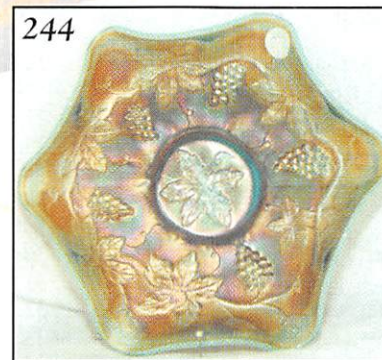
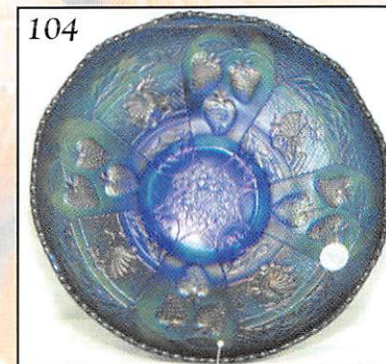
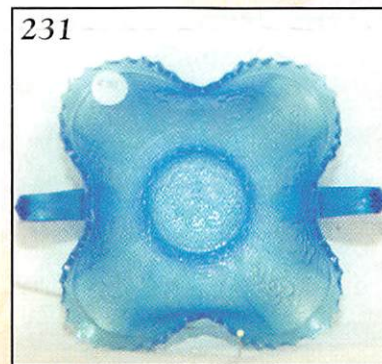
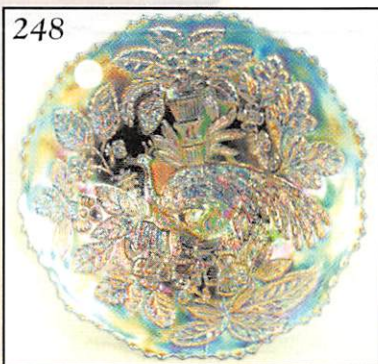
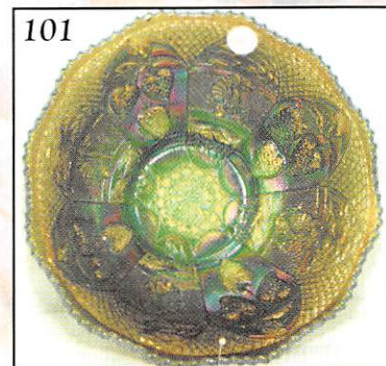
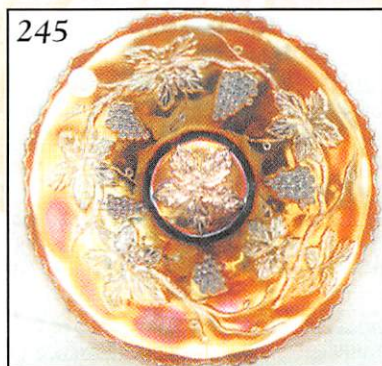
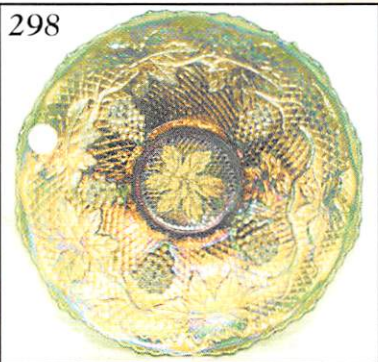
## CARNIVAL GLASS CONVENTION AUCTION

Friday Evening, October 13, 2000 - 7:00 p.m. C.D.T.

Saturday, October 14, 2000 - 9:00 a.m. C.D.T.

👉 Held at Holiday Inn • 5500 West Kellogg • Wichita, Kansas

### ELAINE BENEDICT COLLECTION



Mickey Reichel Antique & Auction L.C.

Office: 660-882-5292 • Home: 660-882-5283

👉 Direct e-mail: [mreichel@undata.com](mailto:mreichel@undata.com)

NEW WEB SITE ON: <http://www.woodsland.com/carnivalglass>

**Holiday Inn • 5500 West Kellogg St. • Wichita, Kansas**  
**Reservations 800-255-6484 or 316-943-2181**

**Air Capital Convention Information: Contact Don Kime - 316-733-8424**  
**Preview: Friday 5:00 to 7:00 p.m. • Saturday 7:30 a.m. • CASH or CHECK ONLY**

**\* \* \* NO BUYERS PREMIUM \* \* \***

### **Auction Consists of Rarity, Great Irid. and Variety**

**WRITE IN BIDS:** If you are unable to attend the auction, we will be happy to accept absentee bids which must be received by **THURSDAY, OCTOBER 5, 2000.** Don't Delay.

**FOR AUCTION PRICE RESULTS: Send \$3.00 and Large S.A.S.E. to 516 Third Street, Boonville, MO 65233-1536**

**PLEASE NOTE:** There is a **\$5 handling charge for each successful bid which will be added to the selling price** for all write-in bids. This is in addition to the cost of postage, insurance and packing. Your write-in bid will be entered just as if you are present and bidding. **Successful bidders will be notified in 1 to 3 days by the auctioneer (so be sure to include your phone number).** Direct mail bids to Auctioneer **Mickey Reichel, 516 Third Street, Boonville, MO 65233-1536.** Terms: Cash or Check accepted with proper I.D. and Social Security Number and References. Announcements made day of the auction supercede all printed material. Not Responsible for Accidents or Sold Items.

**No return on any items once they leave the Auction Center (No Exceptions).\*\*\*\*\***

**Call for additional information: 660-882-5292 days or 660-882-5283 evenings before 9:00 p.m.**

**FAX: 660-882-5292 (evening hours start FAX transmission after beep)**

**MAIL BIDS:** Items are bid on in perfect condition with average or above iridescence OR as listed in the brochures. Bids will not be carried out when damage on an item has been found during the auction.

**PEOPLE PRESENT AT AUCTION ARE RESPONSIBLE FOR FINDING ANY PINHEADS, WEAR, SPOTTINESS, MANUFACTURER'S DEFECTS OR ANY OTHER MINOR FLAWS, ETC. \*\*\*\*\***

**NOTE: Read each line, as we have accentuated the type of no particular piece, all are special.**

**PREVIEW 5:00 TO 7:00 P.M.**  
**FRIDAY'S CONTEMPORARY 1ST SESSION**  
**STARTS AT 7:00 P.M.**

1. Red - Inv. Strawberry Salt/Pepper - ACGA 1994
2. Red - Inv. Strawberry Sugar Bowl/Lid - ACGA 1995
3. Red - Inv. Strawberry Creamer - ACGA 1996
4. Keystone Carn. Club - 1983 - Ice B - Ring Tree
5. Keystone Carn. Club - 1983 - Green - Ring Tree
6. Keystone Carn. Club - 1983 - Pink - Not Irid. - Ring Tree
7. B - ICGA, 1984, Director Inver. Strawberry Rose Bowl
8. Red - 1984 HOACGA Good Luck Fernery
9. Red - ACGA, 1993, Invert. Strawberry Cuspidor
10. Red - 1985 HOACGA Bell
11. IG - HOACGA 1986 Bell
12. B - HOACGA 1987 Bell
13. M - HOACGA 1988 Bell
14. Saph. - HOACGA 1989 Bell
15. Plum Opal - Frank Fenton Founders Bell
16. Mini Hobnail Cuspidor - IG Opal - HOACGA - 1986
17. Mini Hobnail Cuspidor - Cobalt - HOACGA - 1987

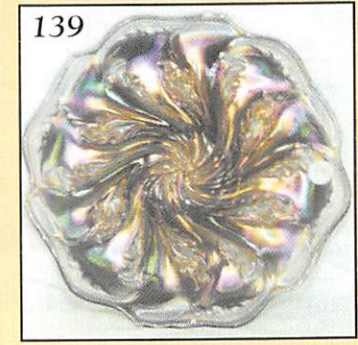
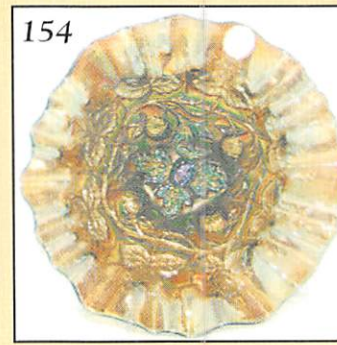
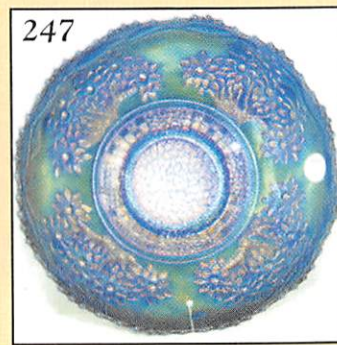
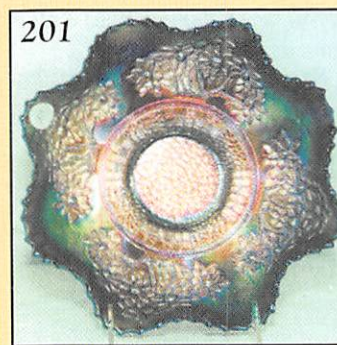
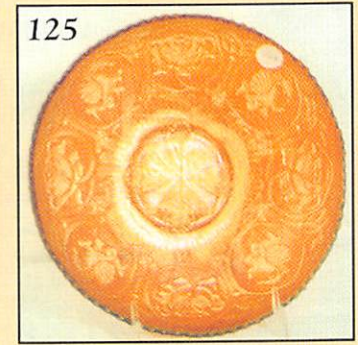
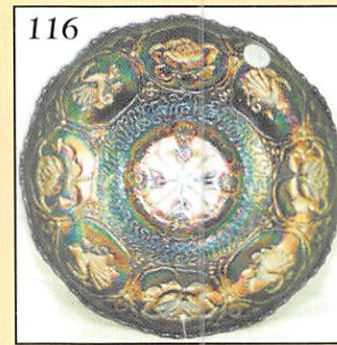
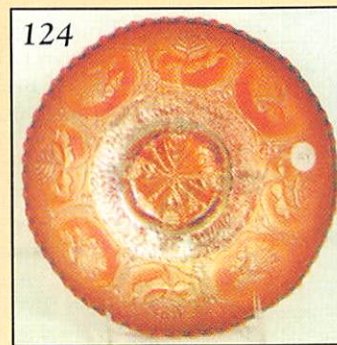
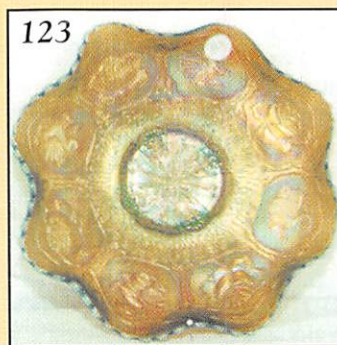
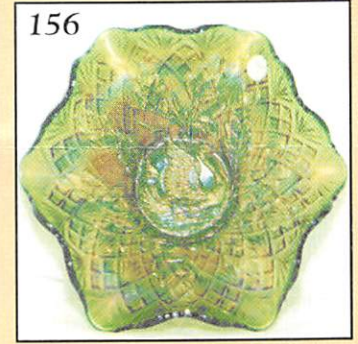
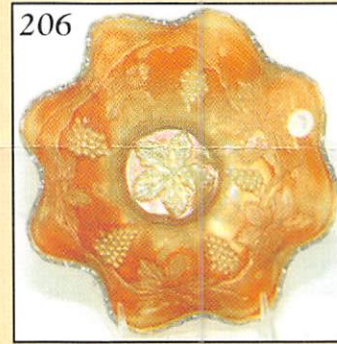
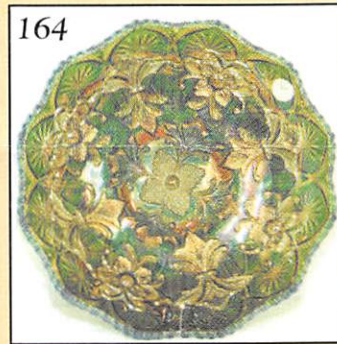
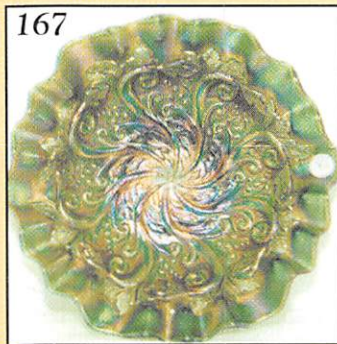
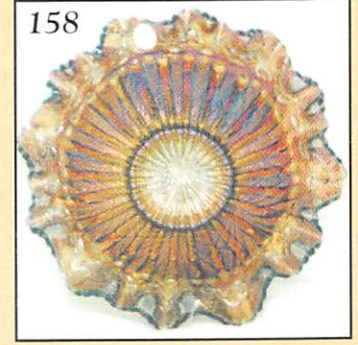
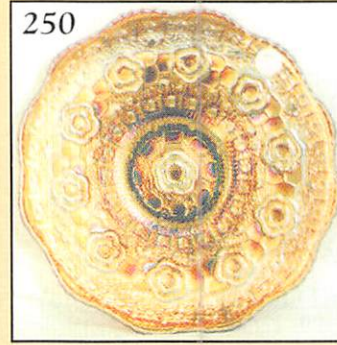
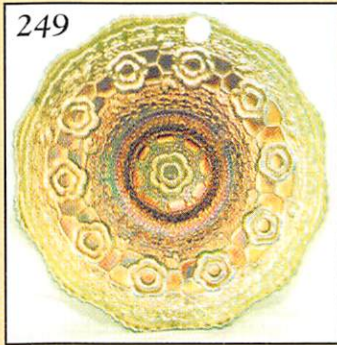
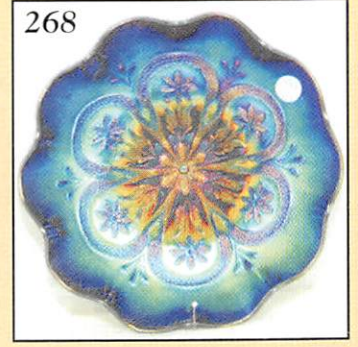
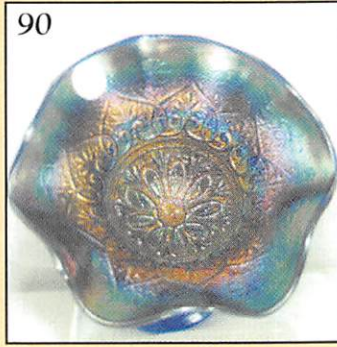
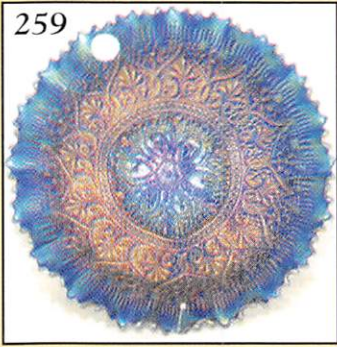
18. Mini Hobnail Cuspidor - M - HOACGA - 1988
19. Mini Hobnail Cuspidor - Saph. - HOACGA - 1989
20. Mini Hobnail Cuspidor - BA - HOACGA - 1990
21. Mini Hobnail Tri-Cornered, 1990 Whimsey
22. Mini Hobnail Cuspidor - IB - HOACGA - 1991
23. Mini Hobnail Cuspidor - IB - HOACGA
24. Aqua - Mini Hobnail Cuspidor - HOACGA - 1992
25. P - Mini Hobnail Cuspidor - HOACGA - 1993
26. Yellow Amber - Mini Hobnail Cuspidor - HOACGA - 1994
27. Celeste B - Mini Hobnail Cuspidor - HOACGA - 1995
28. Aqua Opal - Mini Hobnail Cuspidor - HOACGA - 1996
29. Plum Opal - Mini Hobnail Cuspidor - HOACGA - 1987
30. White - Mini Hobnail Cuspidor - HOACGA - 1998
31. Lav. - Mini Hobnail Cuspidor - HOACGA - 1999
32. Red - 6 1/2" HOACGA 1991 Peacock/Dahlia Plate
33. Aqua - 6" Grape/Cable ICGA 1986 Plate
34. Aqua Opal - 6 1/2" CGS (UK) 1982-1997 Plate
35. Plum Opal - HOACGA 1997 Votive #2
36. Plum Opal - HOACGA 1997 Votive #2
37. Aqua Opal - HOACGA 1996 Votive #1
38. Aqua Opal - HOACGA 1997 Votive #2
39. Red - HOACGA Good Luck Loving Cup - 1979
40. M over Custard - HOACGA Loving Cup - 1983

- 41. W - HOACGA Good Luck Loving Cup - 1998
- 42. **P - HOACGA Floral Decorated Loving Cup - 1998**
- 43. W - Flared HOACGA Loving Cup - 1998
- 44. **Red - HOACGA 1977 Good Luck Hat Pin Holder**
- 45. Ice G - HOACGA 1980 Good Luck Hat Pin Holder
- 46. **Red - HOACGA 1978 Corn Vase**
- 47. Celeste B - HOACGA 1982 Whimsey Corn Vase
- 48. **W - HOACGA 1998 Orange Tree Wine Glass - Flared**
- 49. W - HOACGA 1998 Orange Tree Wine Glass - Flared
- 50. **Lav. - HOACGA 1999 Orange Tree Wine Glass**
- 51. Lav. - HOACGA 1999 Orange Tree Wine Glass
- 52. **Red - HOACGA 1978 Little Mug**
- 53. Saph. - HOACGA 1979 Little Mug
- 54. **G - HOACGA 1980 Little Mug**
- 55. Yellow Opal - HOACGA 1981 Little Mug
- 56. **Cobalt B - HOACGA 1982 Little Mug**
- 57. Amber - HOACGA 1983 Little Mug
- 58. **Deep P - HOACGA 1984 Little Mug**
- 59. Lav - HOACGA 1985 Little Mug
- 60. **IG Opal - HOACGA 1986 Little Mug**
- 61. W - HOACGA 1997 Little Mug
- 62. **Teal - HOACGA 1988 Little Mug**
- 63. Shell Pink - HOACGA 1989 Little Mug
- 64. **Red - HOACGA 1990 Little Mug**
- 65. Rosaline - HOACGA 1991 Little Mug
- 66. **Light Teal - HOACGA 1992 Little Mug**
- 67. Plum - HOACGA 1993 Little Mug
- 68. **Amber - HOACGA 1994 Little Mug**
- 69. Ice B - HOACGA 1995 Little Mug
- 70. **BA - HOACGA 1992 Floral Painted Little Mug**
- 71. Light Teal - HOACGA 1992 Floral Painted Little Mug
- 72. **Lav - HOACGA 1993 Floral Painted Little Mug**
- 73. Amber - HOACGA 1994 Floral Painted Little Mug
- 74. **Lav Opal - HOACGA 1994 Floral Painted Little Mug**
- 75. Aqua - HOACGA 1994 Floral Painted Little Mug
- 76. **White Opal - HOACGA 1994 Floral Painted Little Mug**
- 77. IGO - HOACGA 1986 Whimsey Good Luck Flared Cup
- 78. **Clambroth - HOACGA 1995 Whimsey Basket from Mug**
- 79. P - Indian Toothpick Holder
- 80. **Cobalt - Indian Toothpick Holder - Bicentennial - J. St. C.**
- 81. B - Indian Toothpick Holder - Signed St. Clair
- 82. **G - Indian Toothpick Holder - Madison Co. - 1973**
- 83. Amberia - Indian Toothpick Holder
- 84. **W - Indian Toothpick Holder**
- 85. Pastel IB - Indian Toothpick Holder
- 86. **Turquoise - Milk Glass Toothpick Holder - Madison Co. - 1973**
- 87. Y Vas. - Indian Toothpick Holder
- 88. **Carmel Slag - Indian Toothpick Holder**
- 89. Marigold Slag - Indian Toothpick Holder
- 90. **M - Feather/Fan Toothpick Holder - St. Clair - 1971**
- 91. Amberina - Signed Joe St. Clair Toothpick Holder - Feather/Fan)
- 92. **G - Feather/Fan Joe St. Clair Toothpick Holder**
- 93. Turq. Opaque - Feather/Fan (Joe St. Clair) Toothpick Holder
- 94. **B - Feather/Fan Toothpick Holder**
- 95. Milk W - Opaque Feather/Fan Toothpick Holder
- 96. **P - Feather/Fan Toothpick Holder**

- 97. Carmel Slag - S Repeat Toothpick Holder
- 98. **W - S Repeat Toothpick Holder**
- 99. Aqua Opal - S Repeat Signed V Toothpick Holder
- 100. **Cobalt - Nixon 1776-1976 Signed Bob St. Clair Toothpick Holder**
- 101. IB - Octagon Toothpick Holder - L.I.G.
- 102. **Yellow Amber - 3 in 1 Toothpick Holder - Signed L.I.G.**
- 103. Aqua Opal - Daisy/Button Toothpick Holder
- 104. **Lav. O - Owl Toothpick Holder**
- 105. Red - Owl Toothpick Holder
- 106. **Red - Square Bicent. Signed Joe St. Clair Toothpick Holder**
- 107. Vas. - St. Bernard Toothpick Holder
- 108. **Vas. - Saddle Over Barrel Toothpick Holder**
- 109. Saph - Frog Carrying Shell Toothpick Holder
- 110. **B - Bob/Maude 1974 Toothpick Holder**

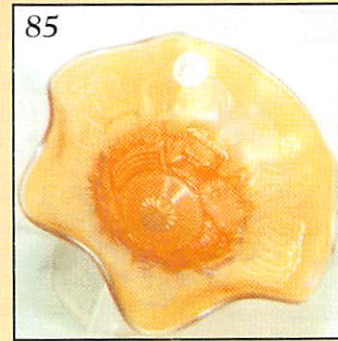
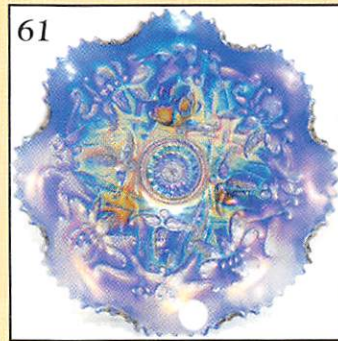
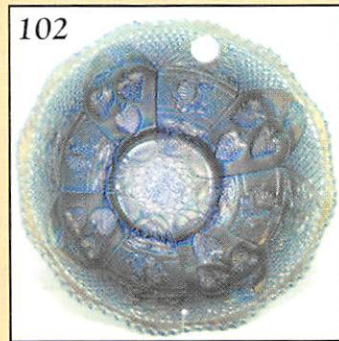
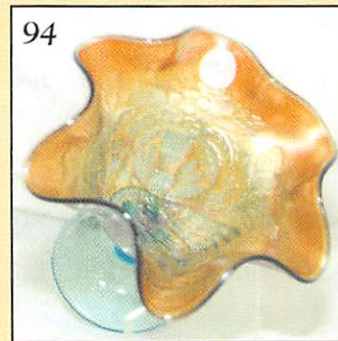
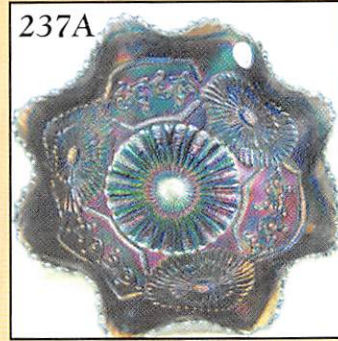
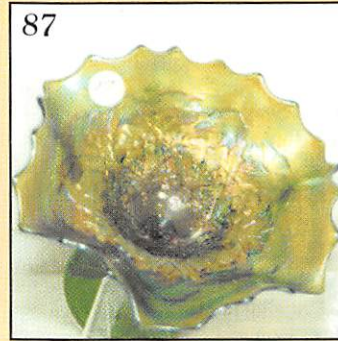
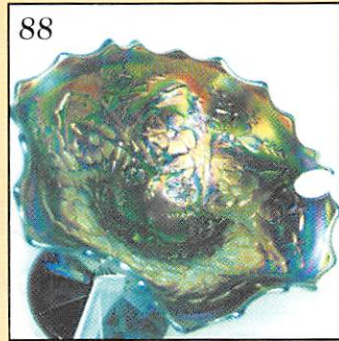
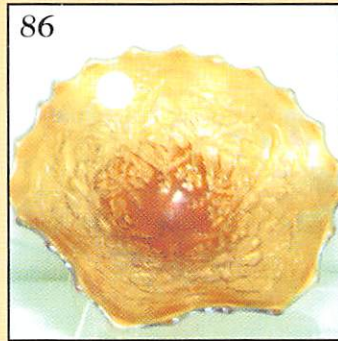
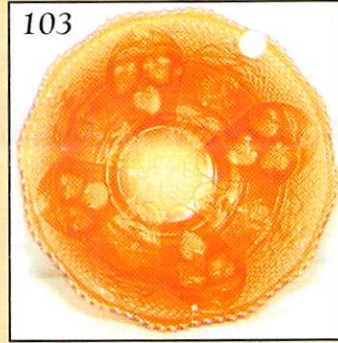
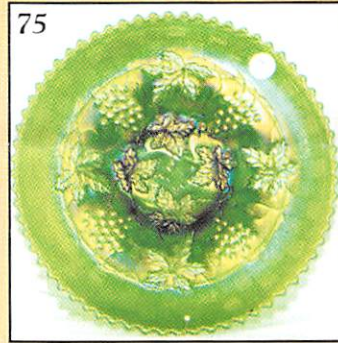
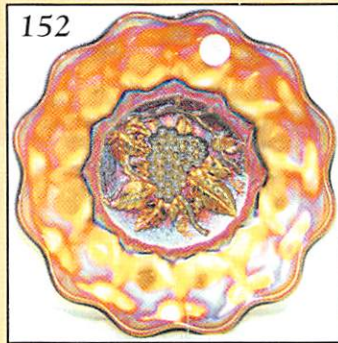
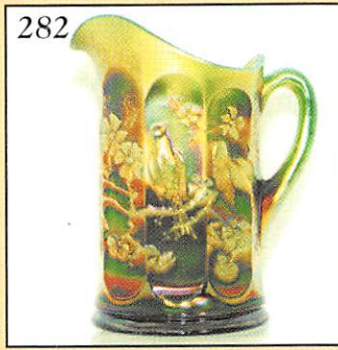
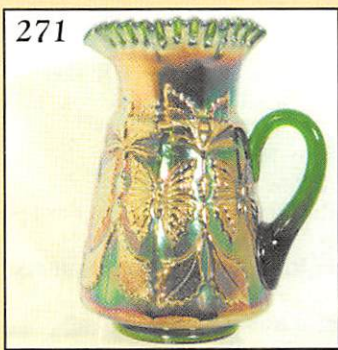
**☛ 9:00 A.M. SATURDAY  
DAY 2 - SECOND SESSION**

- 1. M - 5½" Mini Morning Glory Vase
- 2. G - 4½" Mini Morning Glory Vase
- 3. Smoke - 6¼" Morning Glory Vase
- 4. **B - 6¼" Dia. Bows Vase - Outstanding**
- 5. M - 5" Scarce Woodlands Vase - Extra Nice
- 6. **M - 4¾" Western Thistle Vase (RIIHIMÄKI)**
- 7. M - 5½" Imp. Thumbprint & Oval Vase - Beautiful
- 8. **G - 10" Imp. Ripple Vase - 4" Base, 7" Top - Glows**
- 9. P - 8¾" Imp. Ripple Vase - 3¾" Base, 6" Top - Spectacular Irid.
- 10. **Amber - 8½" Imp. Ripple Vase - 3" Base, 4¼" Top - Super Irid.**
- 11. M - 7" Imp. (Swung) Vase - 2½" Base, 4½" Top - Unusual
- \*12. **G - Superior Drapery Ultra Rare Vase**
- 13. M - Star & File 4½" Dark Rose Bowl
- 14. **W - Persian Medallion Ribbed Interior Bowl**
- 15. AO - N Leaf Beads Rose Bowl
- 16. **W - Grape Delight Ftd. Rose Bowl**
- 17. AO - N Drapery Rose Bowl - Beautiful Example
- 18. **Dark M - N Beaded Cable Rose Bowl**
- 19. IB - Fine Cut/Roses Rose Bowl w/Fancy Interior - Normal Feet - Rich Color
- 20. **A - N Fine Cut/Roses Rose Bowl - Pl. Interior**
- \*21. M - 5¼" Dia. Diving Dolphins Sowerby Rare Rose Bowl
- 22. **Deep G - Fenton Flowers Rose Bowl - Scarce**
- 23. Frosty W - Fenton Flowers Rose Bowl - Great
- 24. **Dark Red (RARE) - Fenton Flowers Rose Bowl**
- 25. Smokey Powder B - Horse Medallion Ftd. Rose Bowl - RARE - WOW!
- 26. **M - 7" I.C.S. Ftd. Horse Medallion Bowl - Rare Shape - Hot Pattern**
- 27. G - 7½", 8 Ruffle, Sq. Shape Horse Medallion Ftd. Bowl - Hot Pattern
- 28. **Lime Vas. - JIP Ftd. Horse Medallion Bowl**
- 29. M - 7½" Horse Medallion Plate - Extra Nice
- 30. **Vas. 8", 8-Ruffle Ball Ftd. Fenton Grape/Cable Bowl - Scarce**
- 31. Vas. - Lotus/Grape, 4-Sides Up Bon Bon - Variant
- 32. **Vas. - 8¾", 8-Ruffle Peacock/Grape Collar Base Bowl - WOW!**



- \_\_\_\_\_ 33. Powder B - 8¼", 8-Ruffle Peacock/Grape Collar Base Bowl - Neat Color
- \_\_\_\_\_ 34. **G - 9", 8-Ruffle Peacock/Grape Collar Base Bowl - Emerald**
- \_\_\_\_\_ 35. Teal - 8¾", 3 in 1 Peacock/Grape Collar Base Bowl - Super
- \_\_\_\_\_ 36. **M - 7½" Deep Round Peacock/Grape Collar Base Nut Bowl - Pumpkin**
- \_\_\_\_\_ 37. B - 9" Spat. Ftd. Peacock/Grape Flat Plate
- \_\_\_\_\_ 38. **M - 9" Spat. Ftd. Peacock/Grape Flat Plate - Dark Outstanding Example**
- \_\_\_\_\_ 39. M - 7½" Leaf Chain Plate
- \_\_\_\_\_ 40. **B - 6½" Persian Medallion Plate - Rare & Pretty**
- \_\_\_\_\_ 41. M - 6½" Outstanding Little Flowers Plate - Pinks/Blues - Little Rarity
- \_\_\_\_\_ 42. **Limish - 6½" Imp. Grape Plate - Glows**
- \_\_\_\_\_ 43. M - 6½" Imp. Grape Plate - Little Beauty
- \_\_\_\_\_ 44. **A - 7¾" N Fruits/Flowers Hand Grip Plate - Stretchy Irid.**
- \_\_\_\_\_ 45. M - 8" N 2-Sides Up Grape/Cable BW Card Tray Plate
- \_\_\_\_\_ 46. **M - 2¼" Tall Kittens Vase or Toothpick Holder**
- \_\_\_\_\_ 47. BA - Heron Mug - Rare Radium Gold & Silver Finish
- \_\_\_\_\_ 48. **M - 6" Ruffled Ball Ftd. Little Fishes Bowl**
- \_\_\_\_\_ 49. Great M - 9" Fenton Holly Ruffled Bowl
- \_\_\_\_\_ 50. **Elec. B - 9" Fenton Holly Ruffled Bowl - Beautiful**
- \_\_\_\_\_ 51. Multi Elec. B - 8½" ICS Fenton Holly Bowl
- \_\_\_\_\_ 52. **A - 9", 8-Ruffle Fenton Holly Bowl - Scarce Color**
- \_\_\_\_\_ 53. M - 9½" Fenton Holly Plate - Pumpkin Irid.
- \_\_\_\_\_ 54. **Powder B - 8" Spat. Ftd. Chrysanthemum Windmill Bowl - Marigold-Silver Overlay**
- \_\_\_\_\_ 55. Lav. - 8¼" ICS Spat. Ftd. Stag & Holly Bowl
- \_\_\_\_\_ 56. **Beautiful M - 10½" ICS Ball Ftd. Stag/Holly Bowl**
- \_\_\_\_\_ 57. M - 9", 8-Ruffle Plaid Bowl
- \_\_\_\_\_ 58. **A - 7¼", 6-Ruffle Fenton Vintage Bowl**
- \_\_\_\_\_ 59. Pump. M - 8½" N Ftd. Ruffle Wishbone Bowl
- \_\_\_\_\_ 60. **A - 8¾" Ftd. Wishbone Plate - Above Ave. - Flat**
- \_\_\_\_\_ 61. Scarce B - Ball Ftd, Ruffled Wishbone Bowl
- \_\_\_\_\_ 62. **G - 8½" Ball Ftd. Ruffled Wishbone Bowl**
- \_\_\_\_\_ 63. B - 9", 3 in 1, Low Ruffled Ribbon Tie Plate/Bowl?
- \_\_\_\_\_ 64. **Clam. - 9½" Leaf Chain Plate**
- \_\_\_\_\_ 65. Pastel G - 9¼", 4 Flowers Variant Plate - Scarce
- \_\_\_\_\_ 66. **M - Imp. Columbia Dome Base Rare Plate - Hot Pinks**
- \_\_\_\_\_ 67. M - 9", 6-Ruffle Fenton Peacock/Urn Bowl - Above Average Irid.
- \_\_\_\_\_ 68. **G - 9", 8-Ruffle Sq. Shape Peacock/Urn Bowl - Rare Find**
- \_\_\_\_\_ 69. A - 9", 8-Ruffle Sq. Shape Peacock/urn Bowl - Scarce Color
- \_\_\_\_\_ 70. **B - 8" ICS Fenton Peacock/Urn Bowl**
- \_\_\_\_\_ 71. Clam - 8", 8-Ruffle Imp. Lustre Rose Bowl - Lots of Irid.
- \_\_\_\_\_ 72. **A - Imp. Grape Decanter w/stopper**
- \_\_\_\_\_ 73. M - 9" N Grape/Cable Variant BW Ext. Plate - Extra Nice
- \_\_\_\_\_ 74. **P - 9" N Grape/Cable B. Ext. Plate - Multi Elec. Irid.**
- \_\_\_\_\_ \*75. **Em. G - 9¼" Grape/Cable Variant BW Plate - Super**
- \_\_\_\_\_ 76. **G - 9" N Stippled Grape/Cable Variant Rib Back Plate - Scarce w/Stippling**
- \_\_\_\_\_ \*77. **Scarce P - 9" N Stippled Grape/Cable Variant Rib Back Plate**
- \_\_\_\_\_ 78. **Pastel Lav. - 8¼" N 8-Ruffle Grape and Cable Bowl - Smooth Ext. - Gorgeous**
- \_\_\_\_\_ 79. **Brick Red - 7½", 8-Ruffle Collar Base Fenton Grape/Cable Bowl**
- \_\_\_\_\_ 80. **Red Slag - 7½", 8-Ruffle Fenton Acorn Bowl - Radium Irid.**
- \_\_\_\_\_ 81. Amberina - Stippled Ray 6" ICS Scale Band Bowl - Extra Nice
- \_\_\_\_\_ 82. **Rare Amberina - Collar Base, 8½" ICS Peacock/Grape Bowl**
- \_\_\_\_\_ 83. P - 6-Ruffle Dugan Pony Bowl - Extra Nice Color
- \_\_\_\_\_ 84. **Scarce W - N Peacock at Fountain Ruffled Compote - Satin**
- \_\_\_\_\_ 85. M - N Peacock at Fountain Ruffled Compote - Yellows, Blues, Pinks - Scarce
- \_\_\_\_\_ 86. **Great M - N Blossom Time Compote - Beautiful Blues and Pinks**
- \_\_\_\_\_ 87. Rare G - N Blossom Time Compote - Blue & Green Irid.
- \_\_\_\_\_ 88. **Outstanding P - N Blossom Time Compote**
- \_\_\_\_\_ 89. Pastel M - Hearts/Flowers Compote - Beautiful Pinks & Yellows
- \_\_\_\_\_ 90. **Rainbow Elec. B - Hearts/Flowers Compote**
- \_\_\_\_\_ 91. Radium Elec. P - Imp. Hobstar Flower Compote
- \_\_\_\_\_ 92. **Pastel IB Opal - Fruits/Flowers Stemmed Bon Bon - WOW!**
- \_\_\_\_\_ 93. Beautiful P - Fern Ruffled Compote - Great
- \_\_\_\_\_ 94. **Saph. - Fenton 6-Ruffle Peacock/Urn Compote - Light M Overlay**
- \_\_\_\_\_ 95. Super Frosty W - Fenton 6-Ruffle Peacock/Urn Compote
- \_\_\_\_\_ 96. **Rare Lav. - Miniature 4", 6-Ruffle Scroll Emb. Compote - Great Find - Seldom Offered**
- \_\_\_\_\_ 97. Amber - 9" Imp. Open Rose Plate - Roughness on Roses
- \_\_\_\_\_ 98. **A - 9¼" Fenton 12-Sided, 2-Fruits Plate - Above Ave.**
- \_\_\_\_\_ 99. B - 9½" Fenton Holly Plate - Multi Irid.
- \_\_\_\_\_ 100. **Ultra, Beautiful, Rare A - 8¾" Round Collar Base Dragon/Strawberry Bowl**
- \_\_\_\_\_ \*101. **Ultra, Beautiful, Rare G - 8¾" Round Collar Base Dragon/Strawberry Bowl**
- \_\_\_\_\_ 102. **Near Elec. B - 8¾" Round Collar Base Dragon/Strawberry Bowl**
- \_\_\_\_\_ \*103. **Beautiful M - 8¾" Round Collar Base Dragon/Strawberry Bowl**
- \_\_\_\_\_ 104. **Elec B - 9¼" ICS Collar Base Dragon/Strawberry Bowl**
- \_\_\_\_\_ 105. M - 8½", 8-Ruffle Collar Base Dragon/Lotus Bowl - Above Average
- \_\_\_\_\_ 106. **Scarce G - 8½", 8-Ruffle Collar Base Dragon/Lotus Bowl - Above Average**
- \_\_\_\_\_ 107. Scarce A - 8½", 8-Ruffle Collar Base Dragon/Lotus Bowl - Above Average
- \_\_\_\_\_ 108. **Lime Vas. - 9", 8-Ruffle Collar Base Dragon/Lotus Bowl - Above Average**
- \_\_\_\_\_ 109. Amber. - 8-Ruffle Collar Base Dragon/Lotus Bowl - Above Average
- \_\_\_\_\_ 110. **Amberina Slag - 8-Ruffle Collar Base Dragon/Lotus Bowl - Above Average**
- \_\_\_\_\_ 111. Peach O - 8¾", 8-Ruffle Collar Base Dragon/Lotus Bowl
- \_\_\_\_\_ 112. **Pink - 8½" ICS Collar Base Dragon/Lotus Bowl - No Irid.**
- \_\_\_\_\_ 113. Pinkish M - 8½" ICS Collar Base Dragon/Lotus Bowl
- \_\_\_\_\_ 114. **Light B - 8½" ICS Collar Base Dragon/Lotus Bowl**
- \_\_\_\_\_ 115. **Deep B - 8½" ICS Collar Base Dragon/Lotus Bowl**

116. Emer. G - 8½" ICS Collar Base Dragon/Lotus Bowl - WOW
117. Brick Red - 8½" ICS Collar Base Dragon/Lotus Bowl
118. A - 8", 8-Ruffle Spat. Ftd. Dragon/Lotus Bowl - Scarce Color
119. Deep G - 8", 8-Ruffle Spat. Ftd. Dragon/Lotus Bowl
120. Dark M - 8", 8-Ruffle Spat. Ftd. Dragon/Lotus Bowl
121. Lime Vas. Opal - 8", 8-Ruffle Spat. Ftd. Dragon/ Lotus Bowl - Common Nick on Spur
122. Lime Vas. Opal - 8½" Collar Base, 3 in 1 Edge Dragon/Lotus Bowl - Extra Nice
- \*123. Rare Aqua Opal - 9", 8-Ruffle Collar Base Dragon/Lotus Bowl
124. One of Few Red Opal - 8" ICS Dragon/Lotus Bowl - Need I Say More - WOW! WOW! Rare
- \*125. Yellow Vas. Opal Slag - 8¼" ICS Dragon/Lotus Bowl - Possibly 1 of 3
126. M - 10", 6-Ruffle, 10 Mums Bowl
127. M - 9" Round Headdress/Curved Star Bowl
128. M - 8¼" Ftd. Thorn/Thistle Low Ruffle Plate
129. Dark M - Fenton 2-Fruits Divided Bon Bon
130. Smoke - 8½" Round Flared Imp. Hattie Bowl - Beautiful
131. Rare M - 10" Ruffled Dome Base Fancy Flowers Radium Bowl - Looks Like Mlbg.
132. M - 8½" Deep Round Dome Base Fleur De Lis Bowl - Scarce - Imperial
133. Smoke - 9¼" Scolloped Imp. Round Crab Claw Bowl
134. Clam - 9½" ICS Fashion Bowl - Imp.
135. P - 7½", 8-Ruffle Lge. Scroll Embossed Curve Star Compote - Elec. Purples and Greens
136. P - 9½" Imp. 8-Ruffle Scroll Embossed File Ext. Bowl - Outstanding Elec. Radium
137. P - 8½" Imp. 8-Ruffle Scroll Embossed File Ext. Bowl - A or B - WOW!
138. P - 9½" Imp. Scroll Embossed Plate
139. Smoke - 10" Acanthus Plate - Beautiful
140. Red Amberina - Double Scroll Console Bowl - Super Stretch
141. Red Amberina - Double Scroll Candlesticks - Pr.
142. Red - 9" Ftd. Floral Optic Bowl
143. Rare B - 9" Collar Base Imp. Open Rose Bowl
144. P - Imp. Flute Toothpick Holder
145. Lav. - Imp. Flute Toothpick Holder
146. G - Imp. Flute Toothpick Holder
147. M - Imp. Flute Toothpick Holder
148. Smoke - 4¾" Rocco Vase
149. P - 8¾" Ruffled Imp. Grape Bowl
150. P - 7½", 8-Ruffle Imp. Heavy Grape Bowl
- \*151. Smoke - 8¾" Imp. Heavy Grape Vt. Plate - Super Pretty & Rare
152. Amber - 8¼" Imp. Heavy Grape Plate - Super
153. G - 10" Mlbg. 6-Ruffle Holly Whirl Bowl - Pretty Satin
154. A - 7½" Mlbg. 3 in 1 Blackberry Wreath Bowl - Fantastic Radium
155. A - 9" Mlbg. 6-Ruffle Blackberry Wreath Bowl - Radium
156. G - 10¼" Mlbg. 6-Ruffle Nesting Swan Bowl - Gorgeous Satin
157. A - 10¼" Mlbg. 6-Ruffle Nesting Swan Bowl - Radium Beauty
158. A - 9½" Mlbg. 3 in 1 Rays & Ribbons Bowl - Beautiful Radium
159. M - 9½" Mlbg. 3 in 1 Rays & Ribbons Bowl - Beautiful Radium
160. G - 8" Mlbg. ICS Mayan Bowl - Light Radium
161. G - 10" Mlbg. ICS Blackberry Wreath Bowl - Neat Shape
162. M - 9¼" Mlbg. 6-Ruffle Whirling Leaves Bowl - Dark Satin
163. G - 10" Mlbg. 6-Ruffle Primrose Pattern Bowl - Dark Satin
164. G - 10" Mlbg. ICS Scalloped Fleur De Lis Bowl - Super Radium
165. M - 9½" Mlbg. ICS Scalloped Fleur De Lis Bowl - Super Radium
166. M - 10" Mlbg. 6-Ruffle Rosaline Bowl - Satin
167. Outstanding G - 10" Mlbg. Seaweed Bowl - Great Multi Satin
168. Outstanding M - 10" Mlbg. Seaweed Bowl - Great Multi Satin
- \*169. A - 6½" Mlbg. Tulip Scroll Vase - 3½" Base, 5½" Top - Radium
170. P - 10½" Imp. Beaded Bullseye Vase - 3½" Base, 5½" Top - Beautiful
171. P - 10½" Imp. Beaded Bullseye Vase - 3½" Base, 5" Top - Beautiful
172. P - 10½" Imp. Beaded Bullseye Vase - 3½" Base, 4¾" Top - Beautiful
173. P - 7¼" Imp. Beaded Bullseye Vase - 3½" Base, 6¼" Top - Beautiful
174. P - 7¾" Imp. Beaded Bullseye Vase - 3½" Base, 6¼" Top - Beautiful
175. P - 6¾" Imp. Beaded Bullseye Vase - 3½" Base, 7" Top
176. M - 10" Imp. Beaded Bullseye Vase - 3½" Base, 5" Top
177. M - 10¼" Imp. Beaded Bullseye Vase - 3½" Base, 5½" Top
178. M - 10½" Imp. Beaded Bullseye Vase - 3½" Base, 5¼" Top
179. M - 8¼" Imp. Beaded Bullseye Vase - 3½" Base, 6" Top
180. M - 7¾" Imp. Beaded Bullseye Vase - 3½" Base, 5½" Top
181. M - 6½" Imp. Beaded Bullseye Vase - 3½" Base, 6¾" Top
182. Lime Vas. - 8½" Imp. Beaded Bullseye Vase - 3½" Base, 5½" Top
183. Greenish - 7¼" Imp. Beaded Bullseye Vase - 3½" Base, 6½" Top - Glows - Wild
184. G - 6¼" Imp. Beaded Bullseye Vase - 3½" Base, 7" Top
185. Lav. - 11¼" Imp. Beaded Bullseye Vase - 3½" Base, 5" Top
186. Amber - 12" Imp. Beaded Bullseye Vase - 3½" Base, 4¼" Top
187. M - 8" Triands Brockwitz Vase - Radium Beauty
188. A - 8" Derby Vase - Sowerby - Rare Color
189. Vas. - 6½" Dugan Stippled Estate Pinched Vase - Very Scarce - Glows Great
190. M - 7¾" Circle Scroll Vase
191. M - 5½" Imp. File Vase - Beautiful Rarity
192. B - 10¼" Pulled Loop Vase
193. P - 6½" Mary Ann Vase - Beautiful Example
194. M - 6½" Mary Ann Vase - Beautiful Example
195. P - 3¼" Dugan Big Basketweave Vase or Base to Fruit Bowl



196. M - Mini 5 1/4" Fostoria Beaded Teardrops Vase - Cutie
197. Powder B - 8 1/4" Fenton Fine Rib Vase
198. G - 9 1/4" Fenton Fine Rib Vase
199. Red - 11 1/2" Fenton Fine Rib Vase - Super Size
200. Rich Red Slag - 9" Butterfly & Berry Vase - Rare Beauty
201. Red - 9", 8-Ruffle Squared Orange Tree Bowl - Super Rare Beauty
202. M - 8 1/2", 8-Ruffle Orange Tree Bowl w/Trunk Center
203. W - 9 1/4" Orange Tree Plate - Pinks & Yellows
204. Scarce G - 8" ICS Coral Bowl - Pretty Example
205. M - 8 3/4", 8-Ruffle Coral Bowl
206. Scarce Persian B - 8 1/2", 8-Ruffle Fenton Vintage Bowl - Beautiful Example
207. Persian Blue - 8" ICS Lotus & Grape Bowl - Radium Gold, Silver Irid.
208. M - 8 1/4", 8-Ruffle Lotus & Grape Bowl - Super Pumpkin Irid.
- \*209. Lime - 9", 8-Ruffle Fenton Holly Bowl - Marigold Overlay
210. G - 9", 8-Ruffle Fenton Holly Bowl
211. Vas. - Fenton Holly Goblet Shape Compote
212. Red - Ruffled Fenton Holly Compote w/Amber Base - Great Find
213. Red - Chesterfield Sherbet w/Twist Stem & Amber Base
214. M - 10", 8-Ruffle Cherry Chain Bowl - Orange Tree Ext.
215. BA - 5 1/4", 12-Ruffle Aust. Kangaroo Bowl w/Branch
216. M - 5 1/4", 12-Ruffle Aust. Kangaroo Bowl w/Branch
217. Pink - Non Irid, 5 1/4", 12-Ruffle Aust. Kangaroo Bowl w/Branch
218. M - 5 1/4", 12-Ruffle Aust. Kingfisher Bowl
219. M - 5 1/2", 8-Ruffle Emu Bowl
220. Aust. Crystal - 8 1/2" Deep Round Golden Pansy Bowl
221. BA - 9 1/2", 12-Ruffle Kingfisher Bowl
222. M - Sowerby Covered Swan - Older Version - Minor Rim Chips
223. M - Rare 8" Wickerwork Sowerby 2 pc. Compote - Complete w/Base
224. G - 10", 3 in 1 Feathered Serpent Bowl
- \*225. Aqua - 9", 8-Ruffle Fenton Thistle Bowl - Rare & Beautiful
226. B - 9", 8-Ruffle Fenton Thistle Bowl - Beauty
- \*227. Vas. - 9", 8-Ruffle Fenton Thistle Bowl - Scarce Beauty
228. Vas. - 7 1/2", 8-Ruffle Acorn Bowl - Outstanding
229. Vas. - Fenton Peacock/Urn Ruffled Compote
230. Vas. - Persian Med. Bon Bon
- \*231. Ultra Rare Celeste Blue - Persian Med. Bon Bon
232. B - Goblet Shape Fenton Peacock/Urn Compote - Neat
233. M - Ruffle 3 in 1 Stream of Hearts Compote
234. M - 6" Dome Ft. Cosmos & Cane Compote - Round
235. W - 6 1/4" Dome Ft. Cosmos & Cane Compote - 8-Ruffle
236. W - 6-Ruffle Constellation Compote
- \*237. Beautiful Rare A - Constellation Compote
- \*237A. Blue - 8-Ruffle Mikado Large Compote - Multi Elec. Beauty
238. Reverse Amberina - 6", 6-Ruffle Ftd. Panther Bowl
239. Red - Orange Tree Mug - 2 1/2" Base, 3 1/4" Top - Silver Satin
240. Amberina - 6 1/2" 2-Row O.E. Blackberry Basket
241. Radium Amberina - 6 1/4" Rd. Collar Base Fenton G & C Bowl
242. Red - Blackberry Spray Hat - 4-Sides Up
243. Red - 5 3/4", 6-Ruffle, 2 Row O.E. Basket
- \*244. Rare AO - 9", 6-Ruffle Fenton Vintage Bowl - Powder Blue?? Base
- \*245. Outstanding Radium Rare A - 9 1/4" Fenton Vintage Plate - Few Known
246. M - 8 3/4", 3 in 1 Ragged Robin Bowl
247. Elec. B - 8" Rd. Orange Tree Bowl
248. Spectacular B - 9 1/4" Fenton Peacock/Urn Plate
249. Scarce G - 9 1/4" Captive Rose Plate
250. A - 9 1/4" Captive Rose Plate
251. B - 9 1/4" Captive Rose Plate
252. M - 9 1/4" Captive Rose Plate
253. M - 9 1/2" Peacock & Grape Collar Base Plate (Flawed Tip)
254. G - Cambridge Inverted Feather Cracker Jar - Interior Chip
255. P - 8 3/4", 8-Ruffle N Strawberry Bowl - Pl. Ext. - Beautiful Purple & Yellows
256. PM - Ruffled Stippled Good Luck Bowl w/Rib Back - Outstanding Pinks
257. PM - 8 1/4" Ruffled Embroidered Mums Bowl - Outstanding Pinks, Yellows, Blues
258. Radium A - 9" N G & C Basketweave Plate
- \*259. Elec. B - PCE Hearts & Flowers RB Bowl - Outstanding Rarity
260. IB - Ruffled Hearts & Flowers RB Bowl - Pinks & Blues
261. M - 9" N Hearts & Flowers Plate - Pinks, Greens, Yellows
262. IG - Ruffled Hearts & Flowers Bowl - Blue Highlights
263. W - Ruffled Hearts & Flowers RB Compote - Frosty
264. PO - 6", 6-Ruffle Petal & Fan Bowls - 4 x S
265. P - 11", 6-Ruffle Victorian Smooth Back Bowl
266. M - 9" Flared Rd. Garden Path & Vt. Bowl - Beautiful Example
267. Moonstone - 8 3/4", 6-Ruffle Westmoreland Carolina Dogwood Bowl - Neat Rarity
268. P - 9", 10-Ruffle Dugan Flowers & Frames Bowl - Super Elec.
269. P - 9" Dugan Round Up Plate - Lots of Color
270. P - S-Repeat Punch Cups - 7 x S
271. Radium G - Butterfly & Fern CRE Top Water Pitcher - Great
272. G - Butterfly & Fern Tumbler - Vt. - Beauty - Multi-Elec.
273. P - Imp. Fashion Water Pitcher - Rare Color
274. P - Imp. Fashion Tumbler - Multi. Elec.
- 274A. Smoke - Fashion 7 Pc. Water Set - Fantastic Set
275. Dark Rich M - Imp. File Water Pitcher - Just Great
276. Dark Rich M - Imp. File Water Tumbler - Just Great
- \*277. B - Blueberry Water Pitcher - Hot Item
278. B - Blueberry Water Tumbler
279. P - Imp. Dia. Lace 7 Pc. Water Set - Stunning
280. A - Mlbg. Diamonds 7 Pc. Water Set - Extra Nice Set
- \*281. W - Gold Trim N Peach Water Pitcher - Outstanding Example



- \_\_\_\_\_ 282. G - N Singing Birds Water Pitcher - Greens, Pinks, Yellows
- \_\_\_\_\_ 283. G - N Singing Birds Water Tumbler
- \_\_\_\_\_ 284. P - N 8 1/4", 8-Ruffle Greek Key Bowl
- \_\_\_\_\_ 285. A - PCE N 3-Fruits Bowl - BW Ext.
- \_\_\_\_\_ 286. Elec. B - Fruits & Flowers N Stemmed Bon Bon
- \_\_\_\_\_ 287. A - 6-Ruffle Dugan Pony Bowl - Extra Nice
- \_\_\_\_\_ 288. M - 10-Ruffle Dugan Pony Bowl - Scarce Shape
- \_\_\_\_\_ 289. IB - PCE Nippon Bowl - Ribbed Ext. - Lots of Blue Highlights
- \_\_\_\_\_ 290. Rich M - Ruffled Nippon Bowl - BW Ext.
- \_\_\_\_\_ 291. P - PCE Nippon Bowl - Ribbed Ext.
- \_\_\_\_\_ 292. Beautiful M - PCE Stippled N Strawberry Bowl - Lot Pinks
- \_\_\_\_\_ 293. P - 9" N Stipple Strawberry Plate - Rib Ext. - Great Example
- \_\_\_\_\_ 294. B - 9" N Stipple 3-Fruits Plate - Scarce Color - Light Wear
- \_\_\_\_\_ 295. G - 9" N Peacocks Plate - Smooth Ext. - Very Desirable
- \_\_\_\_\_ 296. G - 7 1/2" Deep Round Flared Concord Nut Bowl
- \_\_\_\_\_ 297. Near Pumpkin M - 6-Ruffle Concord Bowl
- \_\_\_\_\_ \*298. Rare G - 9 1/4" Concord Plate - Super Color - Few Sold
- \_\_\_\_\_ \*299. A - 9 1/4" Concord Plate - Fantastic Example
- \_\_\_\_\_ \*300. M - 9" Concord Plate - Radium Pink & Yellow Highlights
- \_\_\_\_\_ 301. Smoke - 6" Imp. Stemmed Frosted Block Vase
- \_\_\_\_\_ 302. M - 6" Spiral & Dia. Point Fan Vase
- \_\_\_\_\_ 303. A - Twigs 8 1/2" Stick Vase - Above Average
- \_\_\_\_\_ 304. M - 5" Thin Rib & Grape Vase - Little Beauty
- \_\_\_\_\_ 305. M - 4 1/2" Imp. Rococo Vase
- \_\_\_\_\_ 306. M - 2 1/4" African Shield Vase - 4" Top w/Wire Insert
- \_\_\_\_\_ 307. M - 10" Imp. Parlor panels Vase - Radium Beauty
- \_\_\_\_\_ 308. IG - N 8" Drapery Vase - Minor Toe Roughness
- \_\_\_\_\_ 309. M - 7 1/4" Drapery Vase - Minor Toe Roughness - Pumpkin Irid.
- \_\_\_\_\_ 310. AO - 10" Four Pillars N Vase - Minor Toe Roughness - Butterscotch Overlay
- \_\_\_\_\_ 311. W - Stretch Fenton No. 950 Cornucopia CANDLESTICKS - Scarce Set
- \_\_\_\_\_ 312. M - Fenton Flowers Ftd. Rose Bowl
- \_\_\_\_\_ 313. G - 9", 3 in 1 Fenton Holly Bowl
- \_\_\_\_\_ 314. Peachy Amber - 7" Stippled Rays Scale Band Ext. Plate
- \_\_\_\_\_ 315. Fantastic P - N Ftd. Wild Rose Bowl
- \_\_\_\_\_ 316. M - 8-Ruffle N Ftd. Wishbone Bowl
- \_\_\_\_\_ 317. IG - 9 1/4" N Peacocks RB Plate - Super Flat Example
- \_\_\_\_\_ 318. G - 9" N Strawberry Plate - BW Ext. - Green & Blue Irid.
- \_\_\_\_\_ 319. P - 9" N G & C Vt. Plate - Smooth Ext. - Super Irid.
- \_\_\_\_\_ 320. B - 9 1/2" Rose Show Plate - Flatter Than Most
- \_\_\_\_\_ 321. W - 9 1/2" Rose Show Plate - Also Flat Beauty
- \_\_\_\_\_ 322. Rare P - Diamond & Sunburst Decanter w/Stopper
- \_\_\_\_\_ 323. M - N Hearts & Flowers Compote
- \_\_\_\_\_ 324. PO - 9", 10 Crimp Enamel Decor Stippled Petals Bowl - Neat Effect
- \_\_\_\_\_ 325. PO - 9", 3 in 1 Crimp Dugan Caroline Enamel Floral Bowl - Neat Effect
- \_\_\_\_\_ 326. PO - 9", 10-Ruffle Stippled Petals Enamel Decor Bowl - Neat Also
- \_\_\_\_\_ 327. M - Leaf Tier Sugar Bowl w/Lid
- \_\_\_\_\_ 328. M - Fenton Mini Blackberry Compote - Chips Around Base
- \_\_\_\_\_ 329. M - Crackle Car Vase in Metal Table Stand

- \_\_\_\_\_ 330. B - Orange Tree Hat Pin Holder - Chipped Feet
- \_\_\_\_\_ 331. Handmade Carnival Jewelry - P - Dia. Lace Necklace
- \_\_\_\_\_ 332. Handmade Carnival Jewelry - G - Butterfly & Fern Necklace
- \_\_\_\_\_ 333. Handmade Carnival Jewelry - G - Hobstar Necklace
- \_\_\_\_\_ 334. Handmade Carnival Jewelry - M - Dragon Bola
- \_\_\_\_\_ 335. Handmade Carnival Jewelry - M - Memphis Necklace
- \_\_\_\_\_ 336. Handmade Carnival Jewelry - IB - Hobnail Necklace - From Table Favor
- \_\_\_\_\_ 337. Handmade Carnival Jewelry - M - Dragon Necklace

 **THANK YOU FOR  
ATTENDING THE AUCTION**

**CARNIVAL GLASS AUCTIONS  
AND CALENDAR OF EVENTS**

**September 23, 2000**

Antique Auction - Missouri Governor's Mansion  
Jefferson City, MO

**September 30, 2000**

Elaine Benedict Fenton Collection & Dragons  
Also Ohio Fiesta Collection  
at Boonville, MO

**October 21, 2000**

Antique Auction - Boonville, MO

**October 28, 2000**

Ducks Unlimited Auction - Boonville, MO

**November 4, 2000**

Don McLean Carnival Glass Estate  
Northern Estate at Boonville, MO

**November 11, Herb Helmreich Estate**

**November 18, 2000**

Fine Antique Auction at Boonville, MO

**January 5 & 6, 2001**

Carnival Glass  
10th Anniversary New Year Extravaganza  
at Boonville, MO

**For Free Color Catalogs & Information Write:**

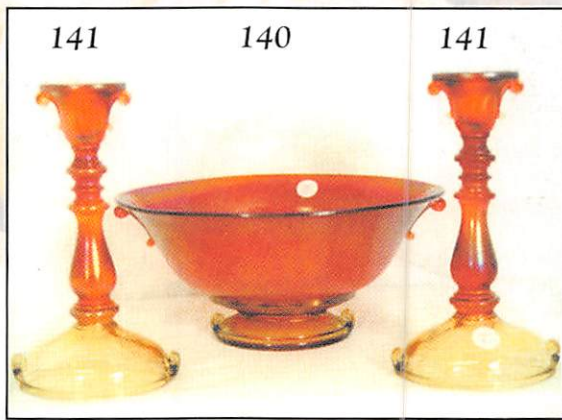
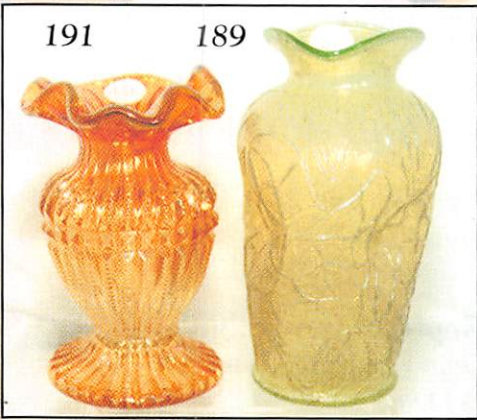
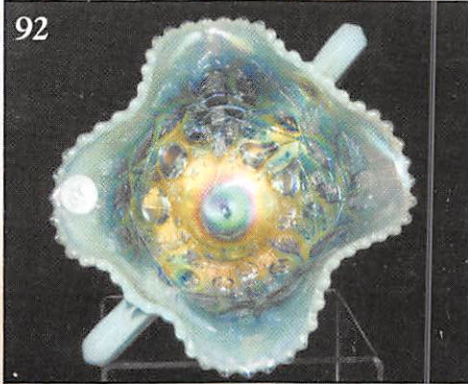
**Mickey Reichel**

**516 Third Street, Boonville, MO 65233-1536**

**or Call: 660-882-5292 days or**

**660-882-5283 evenings**

**E-mail: mreichel@undata.com**



**MICKEY REICHEL**  
ANTIQUE & AUCTION, L.C.  
516 THIRD STREET  
BOONVILLE, MO 65233-1536

PRESORTED  
FIRST CLASS MAIL  
US POSTAGE PAID  
SEDALIA, MO  
PERMIT 217

FIRST CLASS MAIL

RETURN SERVICE REQUESTED

SPECIAL INVITATION TO:

