

# CARNIVAL GLASS AUCTION

700 PLUS\* BELIOT WISCONSIN COLLECTION

## MAMIE BELL ESTATE

Saturday, September 16, 2000 9:00 a.m. C.D.T.

Mickey Reichel Antique & Auction L.C.

Held Inside the Mickey Reichel Auction Center, Boonville, Missouri

Office: 660-882-5292 • Home: 660-882-5283



Direct e-mail: [mreichel@undata.com](mailto:mreichel@undata.com)



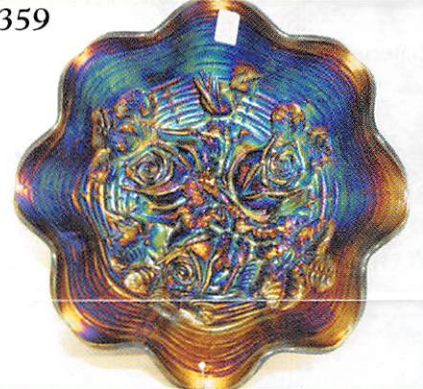
322



358



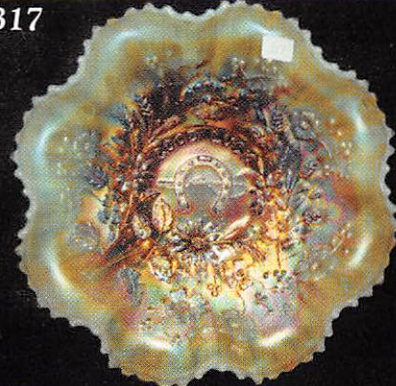
359



130



317



126



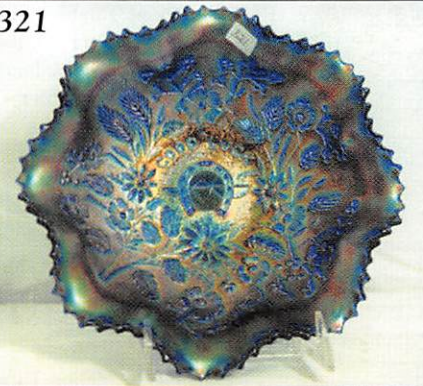
318



331



321



# NO BUYERS PREMIUM

## Held Inside the Mickey Reichel Auction Center

1 Mile North of I-70 on Hwy. 5, Exit 101, Boonville, Missouri • 20 Miles West of Columbia, MO on I-70  
Preview Friday 12 p.m. - 6 p.m. and 7:30 a.m. - 9:00 a.m. Day of Auction

**Make Reservations EARLY at one of these local motels:**

Days Inn: 660-882-8624 • Comfort Inn: 660-882-5317 • Super 8: 660-882-2900

### Auction Consists of Rarity, Great Irid. and Variety

**WRITE IN BIDS:** If you are unable to attend the auction, we will be happy to accept absentee bids which must be received by THURSDAY, SEPTEMBER 14, 2000. Don't Delay.

**FOR AUCTION PRICE RESULTS: Send \$3.00 and Large S.A.S.E. to 516 Third Street, Boonville, MO 65233-1536**

**PLEASE NOTE:** There is a **\$5 handling charge for each successful bid which will be added to the selling price** for all write-in bids. This is in addition to the cost of postage, insurance and packing. Your write-in bid will be entered just as if you are present and bidding. **Successful bidders will be notified in 1 to 3 days by the auctioneer** (so be sure to include your **phone number**). Direct mail bids to Auctioneer Mickey Reichel, 516 Third Street, Boonville, MO 65233-1536. Terms: Cash or Check accepted with proper I.D. and Social Security Number and References. Announcements made day of the auction supercede all printed material. Not Responsible for Accidents or Sold Items.

**No return on any items once they leave the Auction Center (No Exceptions).\*\*\*\***

Call for additional information: 660-882-5292 days or 660-882-5283 evenings before 9:00 p.m.

**FAX: 660-882-5292 (evening hours start FAX transmission after beep)**

**MAIL BIDS:** Items are bid on in perfect condition with average or above iridescence OR as listed in the brochures. Bids will not be carried out when damage on an item has been found during the auction.

**PEOPLE PRESENT AT AUCTION ARE RESPONSIBLE FOR FINDING ANY PINHEADS, WEAR, SPOTTINESS, MANUFACTURER'S DEFECTS OR ANY OTHER MINOR FLAWS, ETC. \*\*\*\*\***

**NOTE:** Read each line, as we have accentuated the type of no particular piece, all are special.

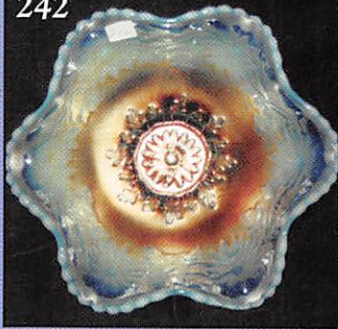
### THANK YOU FOR ATTENDING TODAY

1. M - N Grape Arbor Tumbler
2. W - N Peach Tumbler
3. Celeste Blue - N Concave Diamonds Tumbler - 2 x \$
4. G - N Grape & Cable Tumbler
5. P - N Grape & Cable Tumbler - 6 x \$
6. M - Grape & Gothic Arches Tumblers - 3 x \$
7. P - N Oriental Poppy Tumblers - 4 x \$
8. P - N Dandelion Tumblers - 6 x \$
9. P - N Wishbone Tumblers - 4 x \$
10. M - N Acorn & Burr Tumbler - Sgn. 1914
11. P - N Acorn & Burr Tumblers - 3 x \$
12. P - N Greek Key Tumbler - Flawed Base
13. G - N Singing Birds Tumbler
14. M - N Dandelion Tumbler
15. M - Imp. Field Flowers Tumbler
16. P - Imp. Windmill Tumbler - Elec.
17. G - Butterfly & Fern Tumbler - Variant
18. B - Orange Tree Vt. Tumbler - Very Scarce
19. P - Imp. Lustre Rose Tumblers - 2 x \$ - Super Elec.
20. P - Dia. Lace Tumblers - 5 x \$
21. M - Octagon Tumblers - 2 x \$
22. G - Paneled Dandelion Tumblers - 6 x \$

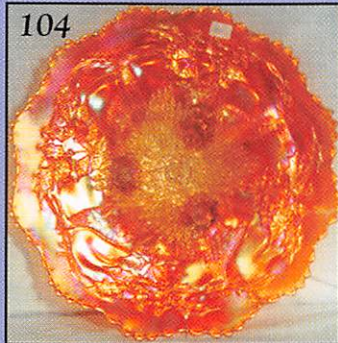
23. M - Fashion Tumbler
24. A - Paneled Dandelion Tumbler
25. M - Crab Claw Tumbler
26. P - Heavy Iris Tumbler - Base Nicks
27. M - Heavy Iris Tumbler - Base Nicks
28. M - Beaded Stork & Rushes Tumbler
29. B - Dugan Peacock at Fountain Tumbler - Dull Finish
30. B - Fentonia Tumbler
31. M - Fenton Waterlily & Cattail Tumbler
32. A - Rambler Rose Tumbler - 2 x \$
33. M - Maple Leaf Tumbler
34. M - Ftd. Ruffled N Wishbone Bowl
35. A - 8 1/4" Ftd. N Wishbone Plate
36. P - 9 1/2" PCE Collar Base Wishbone Bowl
37. PO - Nautilus Creamer - Sgn. W in Script
38. P - Nautilus Creamer - Base Chip
39. A - N Cable & Cable Powder Jar w/Lid
40. Celeste B - Swan Salt
41. Florentine Ice Green - Swan Salt - Pastel
42. P - 8 1/2" N Ruffled Strawberry Bowl - Plain Ext.
43. M - 9" Ruffled Fenton Wild Blackberry Bowl
44. P - 8 1/2" Ruffled N Ftd. Poinsettia & Lattice Bowl
45. M - 9" Cherry Circles Bon Bon - 4 Sides Up
46. A - 9 1/2" Fenton Three Fruits Plate w/Wear

47. A - 9", 6-Ruffle Whimsey Bowl, from Vintage Nut Bowl, Fenton
48. B - 7 $\frac{1}{4}$ " CRE Fenton Concord Bowl - Very Scarce
49. B - 8 $\frac{1}{2}$ ", 6-Ruffle Fenton Concord Bowl - Very Scarce
50. P - N Grape & Cable Hatpin Holder - Extra Nice Ex.
51. PM - 9" N Grape & Cable Vt. Plate - Smooth Ext. - Real Beauty
52. IB - PCE Nippon Bowl - Rib Ext. - Also very pretty
53. Rich Pastel M - Hearts & Flowers Compote
54. Deep Blue - 5 $\frac{1}{2}$ " Fenton, 6-Ruffle Rib Vase - 5 $\frac{1}{2}$ " Top
55. Rare Smoke - Fashion, Breakfast Size, Cream & Sugar
56. A - N 9" Strawberry Plate - Ultra Radium
57. B - N Peacock at Fountain Punch Bowl w/Purple Base - Still Outstanding Set
58. P - N Ivy Town Pump - Minor Nicks (So?)
59. G - N Ivy Town Pump - Bruise on Base - Still Rare Find & Beautiful
60. B - 4-Side Pinch, 2 $\frac{3}{8}$ " Tall Kittens Vase or Toothpick Holder
61. M - Kittens Cup & Saucer - Radium & Nice Match
62. M - 4 $\frac{3}{8}$ " Kittens Plate or Saucer - Silver w/Pink Highlights
63. M - 5 $\frac{1}{4}$ " Tall Little Basketweave Hdl. Basket
64. B - Two Fruits Divided Fenton Bon Bon
65. B - Birds & Cherries Ruffled Compote
66. A - Beaded Shell Mug
67. Beautiful M - Singing Birds Mug
68. M - Imp. Stippled Robins Mug (Old)
69. M- Orange Tree Wine Glass
70. Russet - 8 $\frac{1}{2}$ " N Florentine Candlesticks
71. IB - Grape & Cable Oval Pin Tray - RARE
72. M - Grape & Cable Oval Pin Tray
73. P - Grape & Cable Oval Pin Tray - Epoxy on Edge
74. M - 4 $\frac{1}{2}$ " Imp. Morning Glory Mini Vase - 3 $\frac{3}{8}$ " Top
75. P - Imp. Flute, 5 $\frac{1}{2}$ " Vase - Rare - Chip & Bruise - Still Great Piece
76. G - Corn Vase w/Floral Base - Blue Highlights
77. BO - 8" Dugan Corn Vase w/Open Husk - No Irid.
78. Contemp. Vas. Opal - 7 $\frac{1}{4}$ " Corn Vase
79. P - Sm. Size N Grape & Cable Punch Bowl Base
80. P - S - Repeat Punch Bowl Base - Beautiful Item
81. Crystal - Imp. 6-Sided Candlesticks
82. Mlbg. Crystal - 9 $\frac{1}{4}$ " Ohio Star Vase
83. All Crystal - Hobstar & Feather Mlbg. Punch Bowl Base
84. Rare Blue - Imp. 5 $\frac{1}{4}$ ", 8-Ruffle Scroll Embossed Compote - Radium Elec.
85. M - 5 $\frac{1}{4}$ " Hand Vase - Left Hand
86. M - 9 $\frac{1}{4}$ " Fish Vase - Sgn. Jain
87. M - 9 $\frac{1}{2}$ " ? Czech, Unknown Pattern, Vase
88. Super White - 4 $\frac{3}{4}$ " Scalloped Cosmos & Cane Berry Bowl - Round
89. Super White - Cosmos & Cane Butter Dish - Lid Only
90. Celeste B - Stretch, 8 $\frac{1}{4}$ " Rolled Rim, Tree Bark Base, Compote
91. M Base - 5" Round Australian Crystal Bowl - Pattern?
92. M - 8 $\frac{3}{4}$ ", 12-Ruffle Australian Butterfly Bush Compote
93. M - Aust. 5 $\frac{1}{2}$ ", 12-Ruffle Kangaroo Bowl
94. M - Aust. 5 $\frac{1}{2}$ ", 8-Ruffle Magpie Bowl
95. BA - Aust. 5 $\frac{1}{2}$ ", 12-Ruffle Shrike Bowl
96. BA - Aust. 5 $\frac{1}{4}$ ", 12-Ruffle Kingfisher Bowl
97. BA - Aust. 10", 8-Ruffle Magpie Bowl
98. BA - Aust. 9 $\frac{1}{2}$ ", 12-Ruffle Kingfisher Bowl
99. M - Aust. 9 $\frac{1}{2}$ ", 16-Ruffle Swan Bowl
100. M - Aust. 9 $\frac{1}{4}$ ", 12-Ruffle Shrike Bowl
101. BA - Aust. 8 $\frac{3}{4}$ " Tall Vase - See Photo
102. Crystal - Aust. 8 $\frac{1}{2}$ " Round, Deep, M - Poppys Bowl
103. Crystal - Aust. 4 $\frac{1}{2}$ " Round, Golden Poppys Bowls - A, B, C or D
104. M - 12" Ball Ftd. Stag & Holly Chop Plate
105. Smokey Amber? - Little Barrel - Normal Rim Roughness
106. Smoke - Mini Corn Bottle - A Beauty - Rim Chips
107. Smoke Flashed - Mini Estate Powder Jar w/Lid
108. Smoke Flashed - Mini Estate Perfume Bottle w/Stopper
109. M - Mini Itaglio Nut Cup Compote
110. M Flashed - Mini Portland Powder Jar w/Lid
111. M Flashed - Mini Little Gypsy Pot - Souvenir of Portland, MI
112. M Flashed - Diamonds S & P w/Lids
113. Flash M - Hickman Mini Cruet w/No Stopper
114. G - Imp. Flute Toothpick Holder - Scarce & Nice
115. P - Dia. & Sunburst Wine Glass
116. PM - PCE, Stipple, 3-Fruits, Rib Back Bowl
117. M - Pond Lily Bon Bon - 4 Sides Up
118. M - Imp. Pansy Nappy
119. M - Ruffled Stream of Hearts Persian Med. Compote
120. Stretch Red - 5" Tall Vase - 4" Top - 2 $\frac{1}{2}$ " Base
121. Stretch IG - Dugan Candlestick Vases
122. Stretch Celeste B - Dugan Candlestick Vases - One w/Rim Chip
123. Clambroth - 11" Ftd. Floral & Optic Cake Plate
124. M - 10 $\frac{1}{2}$ " Ftd. Floral & Optic Cake Plate
125. Stretch W - 11" Ftd. Floral & Optic Cake Plate - Rarity
126. Stretch Teal - 11" Ftd. Floral & Optic Cake Plate - Super
127. Red - 5 $\frac{1}{4}$ " No Pattern Rose Bowl
128. Stretch Vas - 6", 8-Sided Little Plate
129. Stretch Vas - 10", 12-Panel Plate
130. Stretch Red - Imp. 15", 14 Panel Optic Charger - WOW!!
131. Celeste Blue - Stretch 9" ICS Tree Bark Base Bowl
132. Red - No. 603 Stretch 3 Ft. Crimped Bowl - Plate 135
133. Stretch IG - Twin Dolphins Fan Vase
134. Stretch Tangerine - Twin Dolphins Fan Vase
135. Stretch Smoke - 10 $\frac{1}{4}$ " Tall, No. 447, Hdl. Basket
136. Stretch Celeste - 4 $\frac{1}{2}$ " Round Sherbet
137. Stretch Celeste - 6 $\frac{1}{4}$ ", No. 847 Melon Rib Bowl
138. Stretch Pink - 6 $\frac{1}{2}$ " Melon Rib, No. 857, Giant Rose Bowl
139. Stretch Pink - U.S. Glass Cheese & Cracker Set
140. Stretch White - U.S. Glass 8" Round Open Works Bowl
141. Clam - 8" Round Imp. Star Med. Bowl
142. Clam - 11" Rd., Ftd., Lustre Rose Bowl - Unusual w/Plain Int.
143. Clam - 9 $\frac{1}{2}$ " ICS Cherry Chain Bowl
144. Clam - 8 $\frac{3}{4}$ " Imp. Octagon Bowl - Scalloped Edge
145. Clam - 9", 6-Ruffle Orange Tree Bowl
146. Clam - 5" Frosted Block Rose Bowl
147. Clam - 7 $\frac{1}{2}$ ", 8-Ruffle Frosted Block Bowl
148. Clam - 8 $\frac{3}{4}$ " Frosted Block Plate
149. Clam - 6" Tall Star Med. Ped. Vase
150. Clam - 9 $\frac{1}{4}$ " Star Med. Plate
151. Smoke - 7 $\frac{1}{4}$ " Frosted Block Plate w/Etched Int. in Center, B.B.
152. Smoke - 6" Star Med. Ped. Vase

242



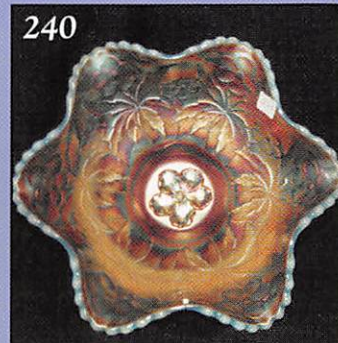
104



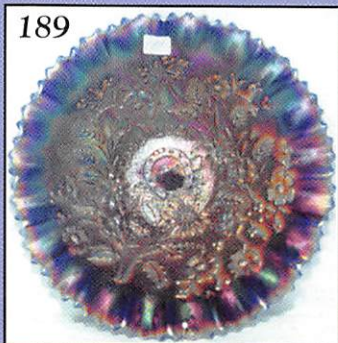
205



240



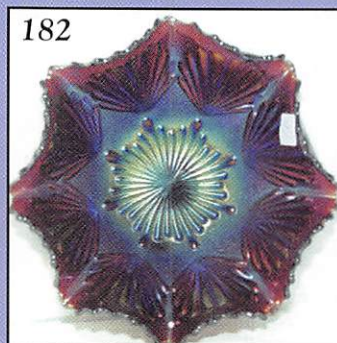
189



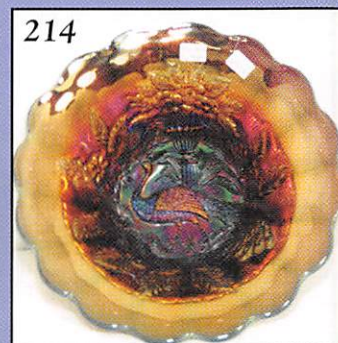
56



182



214



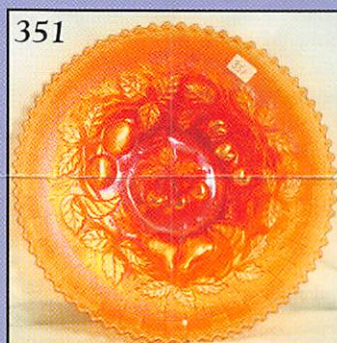
238



190



351



241



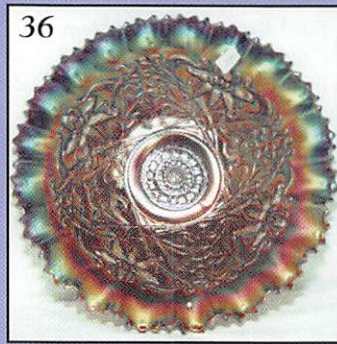
217



49



36



228



315



211



188



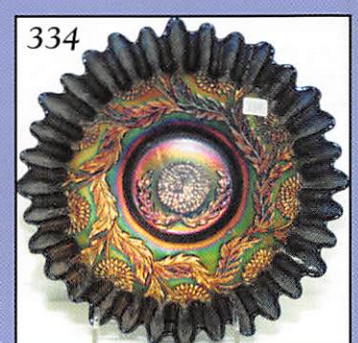
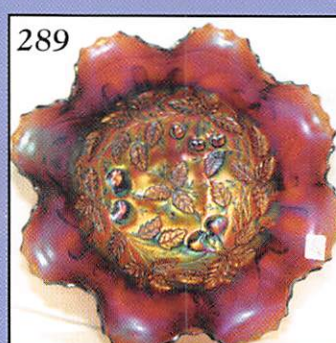
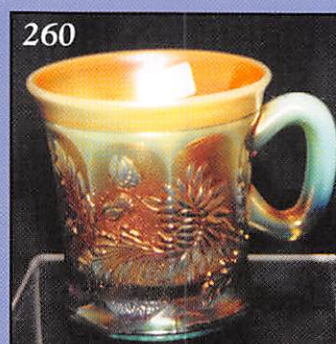
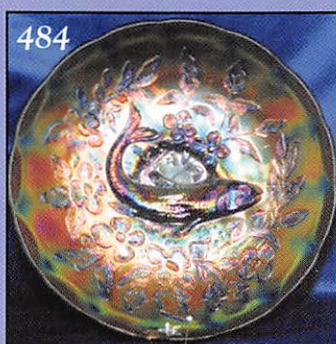
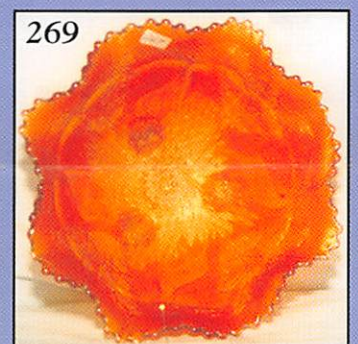
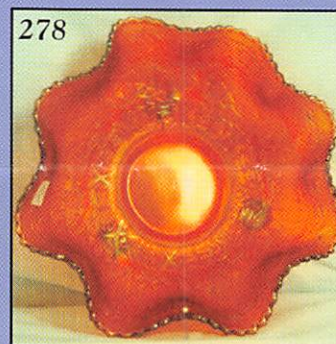
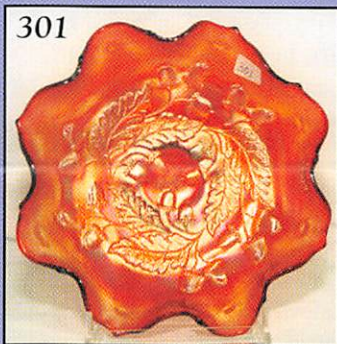
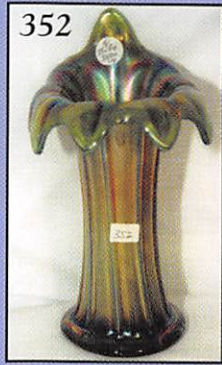
323



- \_\_\_\_\_ 153. W - N Scorn & Burr Punch Bowl - Base Only - Lots Pinks & Blues
- \_\_\_\_\_ 154. W - 9", 3 in 1 Crimped Fanciful Low Bowl - Very Pretty
- \_\_\_\_\_ 155. 7" Low Ruffle Grapevine & Lattice Plate or Bowl? - Great Irid
- \_\_\_\_\_ 156. W - Beautiful 9", 8-Ruffle Double Stem Rose Bowl
- \_\_\_\_\_ 157. W - Great N Fine Cut & Roses Ftd. Candy dish - Normal Feet
- \_\_\_\_\_ 158. W - 9" Low 8-Ruffle Fanciful Bowl - Blue Highlights
- \_\_\_\_\_ 159. W - Ftd. Orange Tree Spooner w/Gold Trim
- \_\_\_\_\_ 160. W - 9" N Peacocks Rib Back Plate
- \_\_\_\_\_ 161. W - 8 3/4", 6-Ruffle Orange Tree Bowl
- \_\_\_\_\_ 162. W - 9", 6-Ruffle Leaf Chain Bowl
- \_\_\_\_\_ 163. W - Great Dahlia Cream Pitcher - Gold Trim
- \_\_\_\_\_ 164. W - Question Mark Stem Bon Bon - Lots Blue Highlights
- \_\_\_\_\_ 165. G - 9" 5 pt. Ftd. Flat Grape & Cable Plate
- \_\_\_\_\_ 166. Beautiful PM - PCE N Strawberry Bowl w/Plain Ext.
- \_\_\_\_\_ 167. M - 9 1/2" Collar Base Peacock & Grape Plate - Real Beauty
- \_\_\_\_\_ 168. P - Imp. Grape Carafe - Multi Elec.
- \_\_\_\_\_ 169. Lav. - Imp. Grape Carafe - Multi Elec.
- \_\_\_\_\_ 170. G - 8 1/2" Fostoria Brocaded Palms Fan Vase
- \_\_\_\_\_ 171. G - Extra Nice, 9", 3-Fruits Basketweave Plate
- \_\_\_\_\_ 172. G - Extra Nice, 9", 3-Fruits Smooth Ext. Plate
- \_\_\_\_\_ 173. Soft M - 9 3/4" Fenton Holly Plate - Stretch Golds & Pinks
- \_\_\_\_\_ 174. M - 9 1/2" Fenton Holly Plate - Stretch Blues & Pinks
- \_\_\_\_\_ 175. M - 7 3/4" Wild Strawberry N Handgrip Plate - Pumpkin Irid.
- \_\_\_\_\_ 176. M - 6 1/2" Imp. Grape Plate - A or B
- \_\_\_\_\_ 177. M - 6 1/2" Persian Med. Plate w/Orange Tree Ext.
- \_\_\_\_\_ 178. Outstanding Radium M - 6 1/4" Star & File Plate - Plain Int.
- \_\_\_\_\_ 179. Yellow - Westmoreland Leaf Swirl Ruffle Compote
- \_\_\_\_\_ 180. Rare A - Westmoreland Fruit Salad, 9 pc. Punch Set
- \_\_\_\_\_ 181. M - 10" Rd, Scalloped Mikado Compote
- \_\_\_\_\_ 182. P - Imp. 8", 8-Ruffle, Shell & Sand Bowl - Super Irid.
- \_\_\_\_\_ 183. Pinkish M - 8 1/2" N Ruffled Ftd. Poinsettia & Lattice Bowl - Pastel
- \_\_\_\_\_ 184. Scarce A - N Blossom Time Compote
- \_\_\_\_\_ 185. B - Flat 10" Fenton Holly Plate
- \_\_\_\_\_ 186. Soft P - 9 1/2" Scroll Embossed Plate - Rich Elec. Irid.
- \_\_\_\_\_ 187. Scarce M - 8" ICS Coral Bowl - Beautiful Example
- \_\_\_\_\_ 188. M - 9" Stipple Good Luck Plate w/Rib Ext. - Great Find
- \_\_\_\_\_ 189. B - Thin Base, PCE, Stipple Good Luck Bowl - Rib Ext. - Extra Nice
- \_\_\_\_\_ 190. Pumpkin M - N Ruffled Good Luck Bowl
- \_\_\_\_\_ 191. Aqua - Ball Ftd. 6" Rnd. Lotus & Grape Vt. Bowl - Scarce Color
- \_\_\_\_\_ 192. G - 6 1/2" Rd. Flared Pine Cone Bowl - Fenton
- \_\_\_\_\_ 193. M - Zipper Stitch Decanter w/Clear Faceted Stopper
- \_\_\_\_\_ 194. M - Imp. Flute & Cane Wine Glasses - A, B, C or D
- \_\_\_\_\_ 195. M - Imp. Star & File Ice Cream Sherbet Dish - Stemmed
- \_\_\_\_\_ 196. M - 8 1/2", 3 in 1 Concord Bowl
- \_\_\_\_\_ 196A. M - Zipper Stitch Wine Glass - Int. Crack
- \_\_\_\_\_ 197. Soft B - Fircone Tumbler - Very Rare
- \_\_\_\_\_ 198. W - Cosmos/Cane Tumbler - Beautiful Example
- \_\_\_\_\_ 199. Honey Amb. - Cosmos/Cane Tumbler - Dandy
- \_\_\_\_\_ 200. M - Banded Diamond Tumbler - Great Find
- \_\_\_\_\_ 201. M - Palm Beach Tumbler
- \_\_\_\_\_ 202. M - N Dandelion Tumbler
- \_\_\_\_\_ 203. PM - PCE Stippled Peacocks Bowl - Rare & Nice
- \_\_\_\_\_ 204. P - PCE Peacocks Bowl - Old Favorite
- \_\_\_\_\_ 205. G - MIBG - Beautiful Radium Mayan Bowl - 8" ICS
- \_\_\_\_\_ 206. G - MIBG 10", 6-Ruffle Holly Whirl Bowl - Satin Irid.
- \_\_\_\_\_ 207. A - MIBG 10", 6-Ruffle Holly Whirl Bowl - Satin Irid.
- \_\_\_\_\_ 208. G - MIBG 10", 6-Ruffle Holly Whirl Bowl - Radium Irid.
- \_\_\_\_\_ 209. M - MIBG 10", 6-Ruffle Holly Whirl Bowl - Radium Irid.
- \_\_\_\_\_ 210. G - MIBG 9" Round Scalloped Rays/Ribbons Bowl - Bluish Radium
- \_\_\_\_\_ 211. G - MIBG 10", 6-Ruffle Whirling Leaves Bowl - Blues and Pinks
- \_\_\_\_\_ 212. G - MIBG 10", 6-Ruffle Whirling Leaves Bowl - Pinks and Golds
- \_\_\_\_\_ 213. PM - MIBG 9 1/4", 6-Ruffle Whirling Leaves Bowl
- \_\_\_\_\_ 214. A - MLBG 9 1/4" Round Flared, Lge. Mould Peacocks Bowl - Super Radium
- \_\_\_\_\_ 215. G - MLBG 10 1/2" Lge.. Mould Peacock & Urn Bowl - Super Radium
- \_\_\_\_\_ 216. G - MLBG 10 1/2" Lge.. Mould Peacock & Urn Bowl - Satin
- \_\_\_\_\_ 217. A - MLBG 8 1/4" Mystery Peacock Bowl - Radium Scarce
- \_\_\_\_\_ 218. A - MLBG 9 1/2", 6-Ruffle Primrose Bowl - Radium
- \_\_\_\_\_ 219. PM - MLBG 9 1/2", 6-Ruffle Primrose Bowl - Radium
- \_\_\_\_\_ 220. G - MLBG 9 1/2", 6-Ruffle Primrose Bowl - Beautiful Satin
- \_\_\_\_\_ 221. M - MLBG 9 1/2", 6-Ruffle Primrose Bowl - Satin
- \_\_\_\_\_ 222. G - MLBG Peacock Tail, Vt. Ruffled Satin
- \_\_\_\_\_ 223. G - MLBG 6", 3 in 1 Edge Black Wreath Bowl - Satin
- \_\_\_\_\_ 224. M - MLBG 8 1/4" ICS Black & Wreath Bowl - Radium
- \_\_\_\_\_ 225. A - MLBG 8 1/2" Rd, Low, Flared Black & Wreath Bowl - Satin
- \_\_\_\_\_ 226. A - MLBG 9 1/4", 6-Ruffle Nesting Swan Bowl - Satin
- \_\_\_\_\_ 227. M - MLBG 9 1/2", 6-Ruffle Nesting Swan Bowl - Radium
- \_\_\_\_\_ 228. A - MLBG 8 1/2", 6-Ruffle Big Fish Bowl - Radium
- \_\_\_\_\_ 229. G - MLBG 10 1/4", 3 in 1 Edge Collar Base Fleur De Lis Bowl
- \_\_\_\_\_ 230. M - PCE N Grape & Cable Bowl - BW Ext. - 8 1/2"
- \_\_\_\_\_ 231. A - Collar Base N 3-Fruits Ruffle Bowl - BW Ext - 8 1/2"
- \_\_\_\_\_ 232. P - 7 1/2", 6-Ruffle Smooth Ray Bowl w/Poppy in Collar Base - Ext.
- \_\_\_\_\_ 233. M - Blossom/Bands Car Vases w/holders - 2 x \$ - Rare (Pair)
- \_\_\_\_\_ 234. PO - 8 1/4" Dugan Single Flower Bowl
- \_\_\_\_\_ 235. PO - 7", 10-Ruffle Dugan Single Flower Framed Bowl - Ext.
- \_\_\_\_\_ 236. M - 11, 8-Ruffle N Stippled Rays Bowl - Super Beauty
- \_\_\_\_\_ 237. M - 10 1/2" PCE N Stippled Rays Salad Shaped Bowl - Pretty
- \_\_\_\_\_ 238. PO - 9 1/2", 10-Ruffle Caroline Bowl - Very Pretty
- \_\_\_\_\_ 239. M - 8 1/4" Westmoreland Caroline Dogwood Bowl - Scarce Color
- \_\_\_\_\_ 240. BO - 8 1/2", 6-Ruffle Westmoreland Cardine Dogwood Bowl - Super
- \_\_\_\_\_ 241. MMG - 8 1/2" Westmoreland Cardine Dogwood Bowl - Scarce Beauty
- \_\_\_\_\_ 242. BO - 8 1/2" Daisy Wreath Bowl - Super
- \_\_\_\_\_ 243. Moonstone - 9" Westmoreland Wreath Bowl - Neat Color
- \_\_\_\_\_ 244. Aqua - 8" Round Smooth Rays Bowl
- \_\_\_\_\_ 245. A - 9 1/2", 6-Ruffle Cosmos VT. Bowl - Radium

- \_\_\_\_\_ 246. M - 8" ICS Windflower Bowl - Neat Shape  
 \_\_\_\_\_ 247. M - 7¼" Dugan Seagulls Bowl  
 \_\_\_\_\_ 248. M - Dugan Beaded Basket  
 \_\_\_\_\_ 249. M - 5½", 6-Ruffle Twins Bowl  
 \_\_\_\_\_ 250. M - LBJ Hat Ashtray  
 \_\_\_\_\_ 251. M - 8" ICS Collar Base Peacock & Grape Bowl  
 \_\_\_\_\_ 252. B - 9", 8-Ruffle Collar Base Peacock & Grape Bowl  
 \_\_\_\_\_ 253. M - 9", 8-Ruffle Collar Base Peacock & Grape Bowl  
 \_\_\_\_\_ 254. G - 8½" Tight CRE Fenton Coin Dot Bowl  
 \_\_\_\_\_ 255. A - 8" Tight CRE Fenton Thistle Bowl  
 \_\_\_\_\_ 256. B - 8½", 6-Ruffle Fenton Thistle Bowl - Beautiful  
 \_\_\_\_\_ 257. M - 6-Ruffle Pony Bowl  
 \_\_\_\_\_ 258. B - N Leaf/Beads Rose Bowl  
 \_\_\_\_\_ 259. AO - N Leaf/Beads Rose Bowl  
 \_\_\_\_\_ 260. AO - Stippled Dandelion Mug - Super Butterscotch  
 \_\_\_\_\_ 261. AO - Hearts/Flowers Compote - Super Butterscotch -  
 Base Nick  
 \_\_\_\_\_ 262. Beautiful Radium G - N Fern Compote -  
 Daisy/Plume Ext.  
 \_\_\_\_\_ 263. IB - N Fine Cut & Roses Rose Bowl - Feet Roughness  
 \_\_\_\_\_ 264. P - N Fine Cut & Roses Rose Bowl - Feet Roughness  
 \_\_\_\_\_ 265. B - Fenton Flowers or Orange Tree Rose Bowl  
 \_\_\_\_\_ 266. P - Grape Delight Ftd. Rose Bowl - Elec.  
 \_\_\_\_\_ 267. M - N Leaf/Beads Rose Bowl  
 \_\_\_\_\_ 268. B - 9½" Ball Ftd. 8-Ruffle Chrys./Windmill Bowl -  
 Great  
 \_\_\_\_\_ 269. Pumpkin M - 9" Deep 8-Ruffle Ball Ftd. Stag/Holly  
 Bowl  
 \_\_\_\_\_ 270. B - 11" Sq. 8-Ruffle Ball Ftd. Stag/Holly Bowl  
 \_\_\_\_\_ 271. Radium B - 10½" Ball Ftd. ICS Stag/Holly Bowl  
 \_\_\_\_\_ 272. M - N Peacock/Fountain 10½" Ftd. Fruit Bowl  
 \_\_\_\_\_ 273. M - 10½" Persian Med., Ftd., Grape/Cable Ext. Fruit  
 Bowl  
 \_\_\_\_\_ 274. Super B - 11" Sq. 8-Ruffle Ball Ftd. Two Flowers  
 Bowl  
 \_\_\_\_\_ 275. M - 10½" ICS Ball Ftd. Two Flowers Bowl - Extra Nice  
 \_\_\_\_\_ 276. G - 7½" Round Spat. Ftd. Two Flowers Nut Bowl -  
 Rare Shape & Color  
 \_\_\_\_\_ 277. Pumpkin M - 5½" Spat. Ftd. Two Flowers Rose Bowl -  
 Scarce  
 \_\_\_\_\_ 278. Pumpkin M - 10¼" Sq. 8-Ruffle Ball Ftd. Little  
 Fishes Bowl - Super  
 \_\_\_\_\_ 279. PO - Ball Ftd. 9" Dugan Cherries Bowl - Plain Interior  
 \_\_\_\_\_ 280. P - Imp. Lustre Rose Spooner - Multi Elec.  
 \_\_\_\_\_ 281. P - Imper. Lustre Rose Creamer - Super Elec.  
 \_\_\_\_\_ 282. P - Imper. Lustre Rose Sugar Bowl w/Lid - Base  
 Cracked  
 \_\_\_\_\_ 283. P - Imper. Lustre Rose Butter Dish w/Lid - Rim Chips  
 \_\_\_\_\_ ★284. Fantastic P - Lustre Rose Pitcher / 6 Tumblers -  
 Awesome Set  
 \_\_\_\_\_ 285. W - Dianthus Enameled Floral 7-Piece Tankard Water  
 Set  
 \_\_\_\_\_ ★286. Ultra Rare W - Dahlia, 7-Piece Water Set w/Blue  
 Stained Dahlias  
 \_\_\_\_\_ 287. M - Flashed 15" Enamel Decor German Stein - Unusual  
 \_\_\_\_\_ 288. B - 9", 8-Ruffle Collar Base Peacock/Grape Bowl  
 \_\_\_\_\_ 289. Extra Nice P - 3-Fruits Medallion Spat. Ftd. Bowl  
 \_\_\_\_\_ 290. G - 8½" N Ruffled Strawberry Bowl  
 \_\_\_\_\_ 291. M - Dugan Vintage Banded Water Pitcher - Scarce and  
 Nice  
 \_\_\_\_\_ 292. M - N Peacock/Fountain Punch Cups - Choice: A, B  
 or C  
 \_\_\_\_\_ 293. M - Vineyard Tumbler - Heat Flash in Rim  
 \_\_\_\_\_ 294. M - Top, Clear Base, 8" Twigs Bud Vase  
 \_\_\_\_\_ 295. B - 9" 3 in 1 Edge Fenton Holly Bowl  
 \_\_\_\_\_ 296. Scarce W - N Collar Base 9" Ruffle Stippled 3-Fruits  
 Bowl - Tip Chip  
 \_\_\_\_\_ 297. M - 7", 6-Ruffle CRE Fenton Holly Bowl  
 \_\_\_\_\_ 298. P - 7", 8-Ruffle Heavy Grape Bowl - Super Elec.  
 \_\_\_\_\_ 299. M - Dugan 6" Summer Days Vase  
 \_\_\_\_\_ 300. G - MLBG 7" Blackberry Wreath Bowl - Chips On  
 Edges  
 \_\_\_\_\_ 300A. Elec B - N Fruits/Flowers Bon Bon  
 \_\_\_\_\_ 300B. Lav. 8½" Florentine Candlestick  
 \_\_\_\_\_ 300C. P - 15¼" Swing Spearhead Diamonds Vase  
 \_\_\_\_\_ 300D. Non-Irid - P - Hatpin  
 \_\_\_\_\_ 300E. BA - Scarab Shell Carnival Hatpin  
 \_\_\_\_\_ 300F. G - Non-Irid - Beate Hatpin  
 \_\_\_\_\_ 300G. BA - Oval Elec Blue Irid Hatpin  
 \_\_\_\_\_ 300H. Lav. Suns Up - Great Hatpin  
 \_\_\_\_\_ 300I. BA - Lge.. Round ? Hatpin - Elec. Blue Irid.  
 \_\_\_\_\_ 301. Amberina - 7¼", 8-Ruffle Acorns Bowl  
 \_\_\_\_\_ 302. Red Slag - 6½" Rd. Acorns Bowl  
 \_\_\_\_\_ 303. Aqua - 7" ICS Acorns Bowl  
 \_\_\_\_\_ 304. B - 7½", 8-Ruffle Acorns Bowl  
 \_\_\_\_\_ 305. M - 7½", 8-Ruffle Acorns Bowl  
 \_\_\_\_\_ 306. M - 8-Ruffle Fenton Holly Bowl  
 \_\_\_\_\_ 307. B - 7", 6-Ruffle Collar Base Horse Medallion Bowl  
 \_\_\_\_\_ 308. M - 7¼" Horse Medallion Plate  
 \_\_\_\_\_ 309. G - 8" ICS Leaf Chain Bowl  
 \_\_\_\_\_ 310. M - 9", 3 in 1 Edge Fenton Vintage Bowl  
 \_\_\_\_\_ 311. M - 7¼" Low Ruffle Fenton Vintage Bowl  
 \_\_\_\_\_ 312. B - 8" ICS Fenton Peacock at Urn Bowl  
 \_\_\_\_\_ 313. Super PM - 9" PCE N Peacocks Bowl - Extra Nice  
 \_\_\_\_\_ 314. M - Flashed 10¼" Rolled Rim Heisey Rayed Console  
 Bowl  
 \_\_\_\_\_ 315. AO - 8½" N Grape/Cable Vt, PCE Bowl - Rare - Manuf.  
 Flaw  
 \_\_\_\_\_ 316. Great G - 9" Sq. 8-Ruffle Lotus/Grape Bowl  
 \_\_\_\_\_ 317. AO - N Ruffle Good Luck Bowl - Rare - Minor Tool  
 Marks  
 \_\_\_\_\_ 318. Elec. B - 8½" Ruffled N Good Luck Bowl - Super  
 Pretty  
 \_\_\_\_\_ 319. Pumpkin M - PCE N Good Luck Bowl  
 \_\_\_\_\_ 320. M - Ruffled Stippled N Good Luck Bowl - Way  
 Above Average  
 \_\_\_\_\_ 321. Super B - Ruffled Stippled N Good Luck Bowl - Way  
 Above Average  
 \_\_\_\_\_ 322. Multi Elec. P - Flat 9" UN Good Luck Plate w/BW  
 Exterior  
 \_\_\_\_\_ 323. Lime VO - 8¼", 3 in 1 Edge Collar Base Dragon/Lotus  
 Bowl - Rare Find  
 \_\_\_\_\_ 324. Pinkish M - 8¼", 8-Ruffle Collar Base Dragon/Lotus  
 Bowl  
 \_\_\_\_\_ 325. Near Cobalt B - 8¼" ICS Dragon/Lotus Bowl  
 \_\_\_\_\_ 326. B - 8¼", 8-Ruffle Dragon/Lotus Bowl - Collar Base  
 \_\_\_\_\_ 327. G - 8", 8-Ruffle Sp. Ftd. Dragon/Lotus Bowl  
 \_\_\_\_\_ 328. B - 8" Tight CRE Captive Rose Bowl  
 \_\_\_\_\_ 329. Great G - 9", 6-Ruffle Captive Rose Bowl  
 \_\_\_\_\_ 330. Extra Nice G - 8½", 3 in 1 Edge Rose Bowl  
 \_\_\_\_\_ 331. G - 9¼" Captive Rose Plate - Rare & Above Average  
 \_\_\_\_\_ 332. B - 8", 3 in 1 Edge Heart/Vine Bowl  
 \_\_\_\_\_ 333. A - 7¼" Tight CRE Heart/Vine Bowl  
 \_\_\_\_\_ 334. Beautiful B - 9" CRE Collar Base 10 Mums Bowl  
 \_\_\_\_\_ 335. Super Red - 9" Ruffled Fenton Holly Bowl - ½" Chip  
 on Marie  
 \_\_\_\_\_ 336. Scarce A - 8½" Rd. Fenton Holly Bowl  
 \_\_\_\_\_ 337. Scarce A - 9", 3 in 1 Edge Holly Bowl


338. B - 9", 3 in 1 Edge Fenton Holly Bowl  
 339. Rich Amber - 9" Ruffled Fenton Holly Bowl  
 340. Amber - 5 1/4" Round Fenton Stippled Rays Bowl  
 341. M - Ruffled 9 1/4" Fenton Holly Bowl - Very Pretty  
 342. Scarce A - 9 1/2" 3 in 1 Edge Little Flowers Bowl  
 343. Deep G - 8" ICS Orange Tree Bowl - Great Find  
 344. Beautiful G - Ruffled Peacock/Grape Spat. Ftd. Bowl  
 345. M - 7 1/2" ICS Peacock/Grape Spat. Ftd. Bowl - Pretty  
 346. Dark G - 8" Low ICS Peacock/Grape Spat. Ftd. Bowl  
 347. B - N Fruits/Flowers Bon Bon - Multi Elec.  
 348. Outstanding P - N Grape/Cable Butter Dish w/Lid  
 349. Outstanding P - N Grape/Cable Sweet Meat Compote w/Lid  
 350. P - 9" N Grape/Cable Plate - Beautiful Example  
 351. M - 9" N Beautiful Flat 3-Fruits Plate  
 352. Very Scarce Beautiful G - N 8 1/4" Thin Rib Jester Cap Vase - Minor Heat Separations  
 353. G - Imp. Loganberry Vase  
 354. Amber Imp. - Logan Berry Vase - Outstanding Example  
 355. P - 8, 6-Ruffle, Dugan 6-Petals Bowl - Super Duper  
 356. B - 9" Fanciful Plate - Scarce Color  
 357. W - 9 1/4" Fenton Holly Plate - Yellows, Blues, Pinks  
 358. P - 9" Outstanding N Peacocks Plate - Ribbed Ext.  
 359. P - 8-Ruffle Rose Show Bowl - Way Above Ave. Irid.  
 360. Scarce N B - 7 1/2", 6-Ruffle Fruits/Flowers Bowl  
 361. Ice G - 8-Ruffle N Hearts/Flowers Bowl  
 362. Beautiful M - 9" CRE Peacock Tail Bowl - Starred Base  
 363. Ice B - Memphis Punch Cups - 4 x \$  
 364. M - 8 1/4" Tall Wine & Roses Pitcher  
 365. M - Wine & Roses Stemmed Goblets - A, B or C  
 366. M - Bouquet (Bulbous) Water Pitcher/6 Tumblers  
 367. M - Hobstar/Band, Flat Bottom Water Pitcher - Rim Chipped  
 368. M - 7-Piece Heavy Iris Tankard Water Set  
 369. Beautiful M - (Bulbous) Inverted Coin Dot Water Pitcher/5 Tumblers  
 370. P - Imp. Windmill Milk Pitcher - Very Scarce Item  
 371. M - Imp. Windmill Milk Pitcher  
 372. Beautiful Smoke - Star Medallion Milk Pitcher  
 373. P - (Bulbous) Wishbone Water Pitcher - Minor Nicks  
 374. P - N Dandelion Tankard Water Pitcher - Multi Elec.  
 375. M - Imp. Grape Decanter w/8 Stemmed Wines  
 376. Crystal Irid - Contemp. Drapery Tankard Pitcher  
 377. Smoke - Imp. 9" Ruffle Scroll Embossed Bowl - File Ext.  
 378. M - Starlyte Small Light Shade  
 379. Crystal Irid - Nuart Coral Shell Elec. Shade  
 380. W - Frosty Etched - Electric Shade  
 381. W - Frosty Etched Electric Shade  
 382. W - Frosty Etched Electric Shade  
 383. Beautiful M - 10 1/4" Imp. Beaded Bulls Eye Vase - 6" Flared Top  
 384. M - 10 1/2" Diamond Point Column Vase  
 385. M - Handled Star/File Celery Vase  
 386. M - 5 1/2" Squatty Diamond Point Column Vase  
 387. RARE M - Imp. Zipper Loop Finger Lamp - All Orig. 4 1/2" - WOW!  
 388. M - 7 1/2" Morning Glory Vase  
 389. M - 9 1/2" Rustic Vase  
 390. M - 8" handled Vase - Rim Nicks  
 391. Russet - 11 1/4", 4 Pillars Vase  
 392. M - 10" Target Vase  
 393. M - 8 1/4" N Tree Trunk Vase  
 394. M - 6" European Heavy Prisms Vase - Extra Nice Color  
 395. B - 9 1/2" Flute Vase - Minor Nicks  
 396. BA - 8 1/4" Lined Lattice Vase - Multi Elec.  
 397. B - 10" Rustic Vase  
 398. G - 8 1/4" Imperial Mid Size Ripple Vase - 5 1/2" Top - 3 1/4" Base  
 399. P - 11 1/2" Spiral Vase - Unusual Beauty  
 400. B - 10" April Showers Vase  
 401. B - 13" April Showers Vase  
 402. P - 15" MLBG or Rustic Variant Vase  
 403. P - 6 1/2" Imp. Heavy Grape Bowl - Multi Elec.  
 404. P - 4 1/4" Imp. Heavy Grape Bowls - 4 x \$  
 405. Smoke - 7 1/2" Rnd. Imp. Star Medallion Bowls - A or B  
 406. M - 7 1/2" Rnd. Imp. Star Medallion Bowl  
 407. C - 7 1/2" Rnd. Imp. Star Medallion Bowl  
 408. M - 9", 8-Ruffle Imp. Grape Bowl  
 409. G - 8" Imp. Heavy Grape Plate  
 410. Outstanding P - 7 1/4" Rnd. Imp. Ftd. Double Dutch Windmill Bowl  
 411. M - 9" Flared Imp. Lustre Rose Bowl  
 412. Smoke - 9" Imperial Lustre Rose Bowls - A or B  
 413. M - Orange Tree Mugs - A, B or c  
 414. G - Helios 8" Imp. Lustre Rose Bowl  
 415. Clam - 10 1/2", 8-Ruffle Collar Base Imp. Rose Bowl  
 416. Amberish - 10 1/4" Round Flared Ftd. Imp. Lustre Rose Bowl  
 417. P - 8", 6-Ruffle Imp. Lustre Rose Bowl - Multi Elec.  
 418. Amber - 8 1/4", 8-Ruffle Imp. Lustre Rose Bowl  
 419. P - 9" Beautiful Imp. Lustre Open Rose Plate - 1/2" Chip on Top Marie  
 420. Amber - 8" Rnd. Imperial Lustre Rose Bowls - A, B, C or D  
 421. P - 9", 8-Ruffle Imp. Grape Bowl - Elec. Beauty  
 422. M - Oval Imper. Pansy Celery Tray  
 423. Soft P - 9", 8-Ruffle Imperial Pansy Bowl  
 424. P - 8" Rnd. Acanthus Bowl  
 425. P - 9" Beautiful 8-Ruffle Diamond Lace Bowls - A or B  
 426. P - 8 1/4" Rnd. Diamond/Lace Bowl  
 427. G - 7" Imp. Grape Bowl - Silvery  
 428. P - 8 1/4", 10-Ruffle Dugan Apple Blossom Twig Bowl  
 429. M Flashed - Rolled Salt/Pepper Shakers  
 430. M Flashed - 11 1/2" Oval Studs Trays - A or B  
 431. Lime - Imp. Grape Wine Glass - Cracked  
 432. M - Crackle Candy Dish / Lid  
 433. PO - 11", 6-Ruffle Ski Star & Compass Bowl  
 434. M - 7", 6-Ruffle Fish Scale/Beads Bowl  
 435. G - 8 1/4", 3 in 1 Edge Smooth Ray Bowl  
 436. Yellow Amber - Westmoreland Lg. Ftd. Shell Dish  
 437. M - 9", 8-Ruffle Moonprint Bowl  
 438. M - Overlay Vaseline - Fenton Peacock/Urn Compote  
 439. RARE P - 8 1/4", 8-Ruffle Dragon/Lotus Bowl - Silvery & Worn  
 440. M - 3 1/2" Squatty Big BW Vase or Fruit Bowl Base  
 441. Aqua - Pansy Spooner - Imper. Silver Irid.  
 442. B - 5 1/4" Rnd. Fenton Vintage Bowl - Silvery  
 443. Aqua - Imp. Pansy Nappy - Scarce w/Silver Irid.  
 444. PO - 9", 10-Ruffle Double Stem Rose Bowl  
 445. M - 8" Rnd. & Flared Hattie Bowl - Chipped Marie  
 446. PO - 9" Dugan Ski Star/Compass Hand Grip Plate  
 447. M - 10" Oval Undertray - Pattern Unknown  
 448. Black A - Non-Irid. Faceted Hatpin  
 449. Black A - Irid. - Flash Spearpoint Hatpin  
 450. Black A - Beaded Hatpin





- \_\_\_\_\_ 451. M - 6¼" Rnd. Star Spray Bowl - Marie Chipped
- \_\_\_\_\_ 452. M - 9¼" Lge. Orange Tree Ftd. Master Bowl
- \_\_\_\_\_ 453. A - Stork in Rushes 2-Sides Up Whimsey from Tumbler
- \_\_\_\_\_ 454. A - Westmoreland Strutting Peacock Cream/Sugar w/Lids
- \_\_\_\_\_ 455. M - Colonial Lemonade Mugs - 6 x \$
- \_\_\_\_\_ 456. M - Wind Flower Nappy
- \_\_\_\_\_ 457. M - 10½" Cosmos VT Bowl
- \_\_\_\_\_ 458. M - 8½" Collar Base Peacock & Grape Bowl - Nicked
- \_\_\_\_\_ 459. G - 6½" Near Cut Strawberry Bowl
- \_\_\_\_\_ 460. G - N 7½", 4-Sides Up Beads Bowl
- \_\_\_\_\_ 461. RARE G - N Dandelion Tankard - Super, but Cracked Around Handle
- \_\_\_\_\_ 462. P - Outstanding N Oriental Tankard - Cracked Around Handle
- \_\_\_\_\_ 463. Super Ice B - N Raspberry Water Pitcher - Cracked Around Handle
- \_\_\_\_\_ 464. P - Fluffy Peacock Water Pitcher - Cracked Around Handle
- \_\_\_\_\_ 465. M - Blackberry Block Tankard - Cracked Around Handle
- \_\_\_\_\_ 466. M - Heavy Iris Tankard - Cracked Around Handle
- \_\_\_\_\_ 467. M - Heavy Iris Tankard - Cracked Around Handle
- \_\_\_\_\_ 468. P - RARE - Greek Key Water Pitcher - Cracked Around Handle
- \_\_\_\_\_ 469. W - Floral/Grape Water Pitcher - Base Crack
- \_\_\_\_\_ 470. Superior Smoked - Imp. Poppy Vase - Lge. Crack
- \_\_\_\_\_ 471. PO - 10½", 8-Ruffle Jeweled Heart Bowl - Chipped
- \_\_\_\_\_ 472. G - Orange Tree Loving Cup - Great, but Chips/Nicks
- \_\_\_\_\_ 473. Elec. P - Grape/Cable Perfume Bottle - Base Cracked - Stopper o.k.
- \_\_\_\_\_ 474. Rare Rd - Fenton Fern Hat - Base Chips
- \_\_\_\_\_ 475. Rare Outstanding Ice B - N Memphis 2-Piece Fruit Set - Cracked Top & Base
- \_\_\_\_\_ 476. P - Ftd. N Wishbone Bowl - Tip Off
- \_\_\_\_\_ 477. M - Kittens Cup - Marie has Lge. Chip
- \_\_\_\_\_ 478. Rare A - 5¼" Ftd. Little Fishes Bowl - Tip Chips
- \_\_\_\_\_ 479. Rare Aqua or Saph. - 8½" ICS Feather Stitch Bowl - Tip Chip
- \_\_\_\_\_ 480. B - 3 in 1 Edge 8¼" Ribbon Tie Bowl - Chipped
- \_\_\_\_\_ 481. P - Swan Salt - Interior Crack
- \_\_\_\_\_ 482. P - 9" N Nippon Ruffle Bowl - Sharp Points
- \_\_\_\_\_ 483. G - Buzz Saw Perfume Bottle/Stopper - Crack in Handle
- \_\_\_\_\_ 484. RARE Lav. - MLBG 8¼" ICS, Trout/Fly Bowl - Rim Repair
- \_\_\_\_\_ 485. Dark Ice B - N Drapery Vase - Toe Chips
- \_\_\_\_\_ 486. P - Iron Cross Mark, Lge. Imp. Stretch Rose Bowl - Base Crack
- \_\_\_\_\_ 487. M - MLBG - Ruffled Nesting Swan Bowl - Rim Chip
- \_\_\_\_\_ 488. B - RARE - Fentonia Water Pitcher - Chipped Around Top
- \_\_\_\_\_ 489. B - 10½" Plume Panel Vase - Top Chipped
- \_\_\_\_\_ 490. Russet - 9", 4-Pillars Vase - Base Chipped
- \_\_\_\_\_ 491. G - N Wide Panel Epergne Complete - With Chips
- \_\_\_\_\_ 492. A - 6½" Davidson Society Advertising Card Tray - Lge. Cinder in Tip
- \_\_\_\_\_ 493. Celeste B - Concave Diamond Tumbler - Rim Nick
- \_\_\_\_\_ 494. M - Fluffy Peacock Tumbler - Base Chip
- \_\_\_\_\_ 495. Smoke - Fashion Tumbler - Rim Chip
- \_\_\_\_\_ 496. M - Inverted Coin Dot Tumbler - Rim Chipped

**PLEASE READ THE  
FOLLOWING MESSAGE!  
SPECIAL NOTE BELOW!**

 **SAME DAY - SESSION (2) TWO:  
LOTS #497 THRU #650. FOR FREE  
LISTING, CALL, E-MAIL, OR WRITE.  
ALL ITEMS CONTEMPORARY  
CARNIVAL GLASS.**

 **THANK YOU FOR  
ATTENDING THE AUCTION**

## CARNIVAL GLASS AUCTIONS CALENDAR OF EVENTS

**September 30, 2000**

Elaine Benedict Fenton Collection & Dragons  
Also Ohio Fiesta Collection  
at Boonville, MO

**Saturday, October 14, 2000**

Elaine Benedict Fenton Collection & Dragons  
Wichita, KS - ACCGA

**November 3 & 4, 2000**

Carnival Glass  
Northern Estate at Boonville, MO

**November 18, 2000**

Fine Antique Auction at Boonville, MO

**January 5 & 6, 2001**

Carnival Glass  
10th Anniversary New Year Extravaganza  
at Boonville, MO

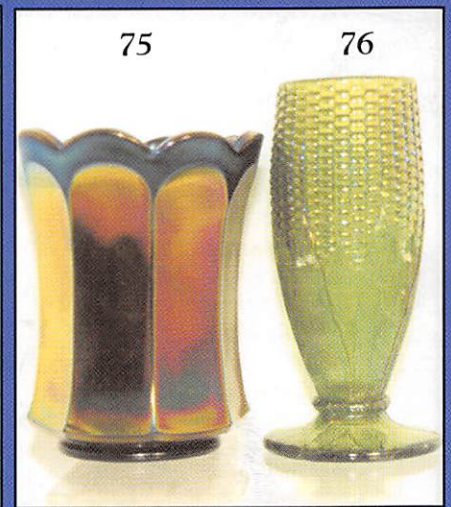
**For Free Color Catalogs & Information Write:**

**Mickey Reichel**

**516 Third Street, Boonville, MO 65233-1536**

**or Call: 660-882-5292 days or**

**660-882-5283 evenings**



**MICKEY REICHEL**  
**ANTIQUE & AUCTION, L.C.**  
 516 THIRD STREET  
 BOONVILLE, MO 65233-1536

PRESORTED  
 FIRST CLASS MAIL  
 US POSTAGE PAID  
 SEDALIA, MO  
 PERMIT 217

FIRST CLASS MAIL

RETURN SERVICE REQUESTED

SPECIAL INVITATION TO:

