

# BURNS

AUCTION SERVICE

## Great Lakes Carnival Glass Club Convention Auction Friday & Saturday August 25 & 26, 2000

**Friday:** Preview – 4:00 P.M.  
Auction – 6:00 P.M. (Lots 1-150)  
**Saturday:** Preview – 8:00 A.M.  
Auction – 10:00 A.M. (Lots 151-End)

*at the*

**Midway Hotel – Lansing**

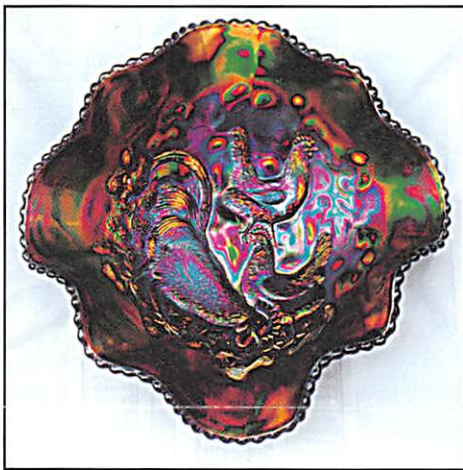
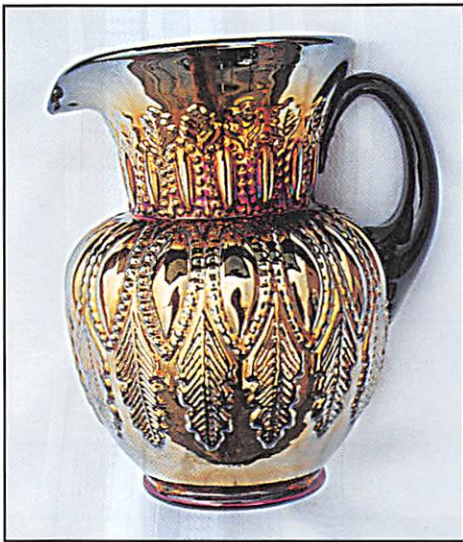
7711 West Saginaw Highway

Lansing, Michigan 48917

(Located just off Exit 93B West Saginaw Street, off of I-96)

(517) 627-8471

or Toll Free (877) 772-6100



Well, now it's up to the State of Michigan to put up with us, and we have a nice auction tagging along.

This year's Great Lakes Carnival Glass Bash will have the glass from 2 or 3 consigners with items coming from upstate New York, New Jersey & Wisconsin included, making for a really nice showing.

The Midway Hotel-Lansing will host the event. It's located just off Exit 93B of I-96 on West Saginaw Street. You can call the hotel direct for reservations at (517) 627-8471.

We always seem to have a ball at this convention – they have a nice bunch of folks there, so get up to the “Glove State” – Hope to see ya there.

**CHECK OUT BURNS AUCTION SERVICE ON THE WEB!**

Visit our new Web site for information on upcoming auctions, complete auction listings and photos of auction highlights. You can e-mail your bids or requests for information.

<http://carnival.ksnews.com/burnsauction> e-mail: [brnzauctsv@aol.com](mailto:brnzauctsv@aol.com)

**BURNS AUCTION SERVICE**

Tom Burns  
P.O. Box 608  
Bath, NY 14810  
(607) 776-7942

Bill Richards  
44 Water St., Poland, OH 44514  
(330) 757-2001  
FAX (330)-757-4917

Bill Richards, III  
2253 Country Lane  
Poland, OH 44514  
(330) 755-2620

**Mail Bids honored under the following conditions:**

1. No deposit required, Bidders will take full responsibility to honor any and all bids we execute for them. Payment in full plus postage and handling required after notification and before we ship any item to them.
2. Items are bid on in perfect condition with average or above average iridescence OR as listed in the brochures. Bids will not be carried out when damage on an item has been found during the auction. **PEOPLE PRESENT AT AUCTION ARE RESPONSIBLE FOR FINDING ANY PINHEADS, WEAR, SPOTTINESS, MANUFACTURER'S DEFECTS OR ANY OTHER MINOR FLAWS, ETC.**
3. Successful bidders will be notified by collect call from the auctioneer (**so be sure to include the phone number**).
4. Phone inquiries about the glass or any other questions are welcome.
5. If you have some other person at the auction bidding for you, they must pay for the item before taking it.
6. Any terms or conditions given the day of the auction will supersede any previously published information.
7. Mail, e-mail, fax and phone bids are due by Tuesday, August 22, 2000.

- |   |  |
|---|--|
| _____ 1. Mayonnaise Ladle, Signed Heisey – Lt. Mari. (rare item to find)  | _____ 18. (5) N Acorn Burr Handled Punch Caps – Mari. (average color; selling so much each for set)                              |
| _____ 2. Heisey Style Etched Ftd. Breakfast Sugar and Creamer – Lt. Mari. (unusual pair)                            | _____ 19. <b>(3) N'WOOD THIN RIB LAMP SHADES – P. OPAL (GREAT SET; RARE; SELLING SO MUCH EACH FOR SET)</b>                       |
| _____ 3. 6-1/2" Heisey Style Etched Handled Doughnut or Tidbit Tray – Lt. Mari. (unusual item)                      | _____ 20. <b>12" TALL X 4-3/4" BASE N TREE TRUNK MID SIZE SWUNG VASE – HOREHOUND (RARE BASE COLOR; NICE IRID.; A TOUGHIE!)</b>   |
| _____ 4. Westmoreland Miniature Handled Flower Basket Master Salt – Lt. Mari. (scarce)                              | _____ 21. 12" Tall x 4-3/4" Base N Tree Trunk Mid Size Swung Vase – Amyth. (scarce and desirable; has satiny finish)             |
| _____ 5. Maker(?) Barrel Shaped Ribbed Swirl Miniature Lamp Base – Lt. Mari. (scarce pattern)                       | _____ 22. 8-1/2" Tall N Tree Trunk Standard Swung Vase – Purp. (a shorter version; satiny irid.)                                 |
| _____ 6. Newer Figural Religious Characters Hanging Wall Fixtures – Amber./ Mari. (figural of Mary and Joseph)      | _____ 23. <b>10" TALL N FOUR PILLAR RIBBED SWUNG VASE – BLUE (RARE AND DESIRABLE; REALLY NICE IRID.)</b>                         |
| _____ 7. Newer Single Religious Character Hanging Wall Fixture – Sapphire (figural of Mary)                         | _____ 24. N Grape and Gothic Arches 7 Pc. Water Set – Mari. (scarce set; nice color)   |
| _____ 8. Beaded Bag w/ Clasp – Dark   | _____ 25. <b>N FINE CUT AND ROSES FTD. ROSE BOWL W/ NO COLLAR BASE – GREEN (RARE VARIATION; PERFECT; MARI. INTERIOR)</b>         |
| _____ 9. 7" Tall Stevens & Williams Ftd. Paneled Flared Vase – Mari. (scarce; art glass style)                      | _____ 26. N Fine Cut and Roses Ftd. Rose Bowl – Purp. (nice color and irid.)   |
| _____ 10. <b>8" TALL FOSTORIA BROCADED PALMS STEMMED COMPOTE – ICE GREEN (RARE SHAPE; NICE IRID.)</b>               | _____ 27. N Fine Cut and Roses Ftd. Rose Bowl – Amyth. (average irid.)   |
| _____ 11. 9" Tall Fostoria Brocaded Sumner Gardens Lg. Tumbler Shaped Vase – Clear/ Irid. (very scarce; nice irid.) | _____ 28. N Beaded Cable Ftd. Ruffled Rose Bowl – Dk. Mari. (nice color)   |
| _____ 12. Fostoria Brocaded Acorn Handled Round Bon Bon – Pink  | _____ 29. N Greek 8 Ruffled Bowl w/ Basketweave Ext. – Mari. (light satiny irid.)  |
| _____ 13. Fostoria Brocaded Acorn Handled Round Bon Bon – Ice Blue  | _____ 30. <b>N BLOSSOMTIME STEMMED 6 RUFFLED COMPOTE – DK. MARI. (RARE AND DESIRABLE; NICE COLOR AND IRID.; VERY ATTRACTIVE)</b> |
| _____ 14. Pair 4-3/4" Tall 6 Paneled Candlesticks, Heisey Style – Lt. Mari. (unusual pair; very attractive)         |  |
| _____ 15. 10" Tall Imperial Paneled Candlestick – Smoke/ Red Flash (oddball item; smoke item w/ a red flash decor.) |  |
| _____ 16. Westmoreland(?) 2 Pc. Covered Honey Pot – Aqua (nice color)   |  |
| _____ 17. N Acorn Burr Punch Base Only – Mari. (nice color; light irid.)  |  |

- \_\_\_\_\_ 31. N Lattice and Poinsettia Ftd. Ruffled Bowl – Ice Blue (damaged; nice shelf piece)
- \_\_\_\_\_ 32. N G & C Ftd. 8 Ruffled Bowl w/ Meander Ext. – Purp. (scarce; nice color)
- \_\_\_\_\_ 33. N G & C 8 Ruffled Bowl w/ Plain Ext. – Green (satiny irid.)
- \_\_\_\_\_ 34. N Blank Interior/ Vintage Ext. Domed 8 Ruffled Bowl – Amyth. (unusual item; blank for Star of David)
- \_\_\_\_\_ 35. **12" IMPERIAL SODA GOLD WHIMSEY CHOP PLATE FROM CONSOLE BOWL – MARI. (VERY RARE WHIMSEY ITEM; NICE COLOR; ONLY ONE I'VE SEEN)**
- \_\_\_\_\_ 36. **9" IMPERIAL GRAPE 8 RUFFLED BOWL – AMBER. (RARE AND DESIRABLE COLOR FOR THIS ITEM; NICE)**
- \_\_\_\_\_ 37. 8-3/4" Imperial Pansy 8 Ruffled Bowl – Amber. (super example; great blues and reds)
- \_\_\_\_\_ 38. Imperial Open Rose Rose Bowl – Amber. (scarce)
- \_\_\_\_\_ 39. 8" Tall Imperial Ripple Standard Swung Vase – Amber. (scarce; attractive item)
- \_\_\_\_\_ 40. **14" TALL X 4-3/4" BASE IMPERIAL MORNING GLORY SWUNG FUNERAL VASE – PURP. (VERY SCARCE AND DESIRABLE; ODD FLARE)**
- \_\_\_\_\_ 41. 15-1/4" Tall x 5" Base Imperial Ribbed Parlor Panels Funeral Vase – Dk. Mari. (scarce; nice dark color and irid.)
- \_\_\_\_\_ 42. 18" Tall x 4-3/4" Base Imperial Ripple Swung Funeral Vase – Dk. Mari. (scarce; nice dark color and irid.)
- \_\_\_\_\_ 43. 6-3/4" Tall Imperial Ripple Small Swung Vase – Mari. (nice color)
- \_\_\_\_\_ 44. 11" Tall Imperial Beaded Bullseye Swung Vase – Purp. (super example w/ great irid.)
- \_\_\_\_\_ 45. **6-1/4" TALL IMPERIAL PARLOR PANELS SQUATTY FLARED VASE – SMOKE (VERY SCARCE ITEM; NICE COLOR AND IRID.)**
- \_\_\_\_\_ 46. 7" Tall Imperial Parlor Panels Squatty Flared Vase – Mari. (nice match for above item)
- \_\_\_\_\_ 47. 7" and 7-1/2" Imperial Miniature Morning Glory Swung Vases – Smoke (scarce; nice irid.)
- \_\_\_\_\_ 48. 8-1/2" Tall Imperial Miniature Morning Glory Tall Swung Vase – Smoke (scarce; nice irid.)
- \_\_\_\_\_ 49. Pair Imperial Cockatoo Hanging Wall Vases – Mari. (selling choice)
- \_\_\_\_\_ 50. **DUGAN FORMAL FTD. HATPIN HOLDER – DK. MARI. (NICE DARK EXAMPLE; MANUF. FLAW AT TOP)**
- \_\_\_\_\_ 51. 8-1/4" Tall Dugan Circle Scroll Swung Vase – Purp. (super example w/ great color; damaged on base)
- \_\_\_\_\_ 52. **DUGAN HEAVY IRIS TUMBLER – PURP. (SUPER EXAMPLE)**
- \_\_\_\_\_ 53. Dugan Heavy Iris Tumbler – Amyth. (scarce; satiny)
- \_\_\_\_\_ 54. 9" Tall Westmoreland Wide Panel Swung Vase – Teal (attractive item)
- \_\_\_\_\_ 55. **M'BURG FLEUR DE LEI DOMED TRI-CORNERED CRIMPED EDGE BOWL – MARI. (RADIUM AND VERY SCARCE; NICE COLOR)**
- \_\_\_\_\_ 56. **M'BURG STRAWBERRY WREATH STEMMED 6 RUFFLED COMPOTE – DK. MARI. (RADIUM AND SCARCE; NICE COLOR AND IRID.)**
- \_\_\_\_\_ 57. 6" M'burg Holly Sprig 12 Ruffled Crimped Edge Sauce – Dk. Mari. (scarce shape; very desirable)
- \_\_\_\_\_ 58. 6" M'burg Blackberry Wreath 6 Ruffled Sauce – Dk. Mari. (radium; nice)
- \_\_\_\_\_ 59. Maker(?) Rolled Ribbed 2 Pc. Tumble-Up – Mari. (scarce)
- \_\_\_\_\_ 60. 10" Tall x 4-1/8" Base Fenton Rustic Squatty Flared Mid Size Swung Vase – Dk. Mari. (really neat shape; some call these Millersburg)
- \_\_\_\_\_ 61. 9" Fenton Holly 8 Ruffled Bowl – Blue (nice example)
- \_\_\_\_\_ 62. 8-3/4" Fenton Holly 6 Ruffled Bowl – Green (satiny finish)
- \_\_\_\_\_ 63. 9" Fenton Peacock and Grape 8 Ruffled Bowl – Blue (satiny finish)
- \_\_\_\_\_ 64. 5-1/2" Fenton Feathered Serpent Tri-Cornered Bowl – Mari. (scarce shape)
- \_\_\_\_\_ 65. Fenton Two Row Open Edge 6 Ruffled Large Size Basketweave Hat – Lt. Amyth./ Mari. (odd base tint)
- \_\_\_\_\_ 66. Pr. Fenton Stippled Rays Pedestaled Breakfast Sugar and Creamer – Blue (actually quite a scarce pair)
- \_\_\_\_\_ 67. Fenton Stippled Rays Whimsey Flared 2 Handled Pedestaled Sugar – Blue (odd shape to a sugar)
- \_\_\_\_\_ 68. Fenton Ribbed Ftd. J.I.P. Vase – Mari. (scarce; nice irid.)
- \_\_\_\_\_ 69. Fenton Orange Tree Handled Loving Cup – Mari. (scarce; has odd gray tint to glass)
- \_\_\_\_\_ 70. **FENTON BLACKBERRY SPRAY 6 RUFFLED HAT – LIME GREEN OPAL. (RARE COLOR AND VERY DESIRABLE; SUPER)**
- \_\_\_\_\_ 71. Fenton Footed Orange Tree 7 Pc. Water Set – Blue (very scarce; it has some foot damage)
- \_\_\_\_\_ 72. Fenton Grape and Lattice 6 Pc. Tankard Water Set – Lt. Mari. (fair satiny finish)
- \_\_\_\_\_ 73. 1908 St. Paul, Minn. Shriners Champagne Glass – Ruby Flash (excellent example)
- \_\_\_\_\_ 74. Czech(?) 2 Pc. Dresser Set, (1) Covered Powder Jar and (1) Perfume – Mari./ Flash (cut crystal w/ marigold overlay)
- \_\_\_\_\_ 75. **11" TALL X 6" BASE IMPERIAL ZIPPER LOOP LARGE SIZE KEROSENE TABLE LAMP – MARI. (VERY RARE AND VERY DESIRABLE SIZE; REALLY TOUGH ITEM)**
- \_\_\_\_\_ 76. Imperial Flute Toothpick Holder – Purp. (nice color and irid.)
- \_\_\_\_\_ 77. U.S. Glass Panel 44 Ftd. Toothpick Holder – Gold/ Crystal
- \_\_\_\_\_ 78. 5" Tall Heisey Style Handled Chamberstick – Mari. (scarce item; nice)
- \_\_\_\_\_ 79. 9" M'burg Grape Wreath Variant 6 Ruffled Crimped Edge Bowl – Green (radium w/ great irid.)
- \_\_\_\_\_ 80. **10" M'BURG HANGING CHERRIES LG. 6 RUFFLED BOWL W/ HOBNAIL EXT. – AMYTH. (VERY RARE AND VERY DESIRABLE; SATINY IRID.)**
- \_\_\_\_\_ 81. Westmoreland Bo-Peep Handled Mug – Lt. Mari. (scarce; light color)
- \_\_\_\_\_ 82. 6" Tall Dugan Stippled Estate Tri-Cornered Pinched in Vase – Odd Green (scarce)
- \_\_\_\_\_ 83. 5-1/2" Tall x 6-1/4" Wide Top Dugan Thin Rib Squatty Swung Vase – Lt. P. Opal. (scarce shape)
- \_\_\_\_\_ 84. 6-1/2" Dugan Ski Star 8 Ruffled Sauce w/ Compass Ext. – Amyth. (nice color and irid.)
- \_\_\_\_\_ 85. **11-1/4" DUGAN HEAVY WEB LG. FLARED BOWL – P. OPAL. (EXTREMELY RARE ITEM; GREAT OPAL. AND SATINY IRID.)**
- \_\_\_\_\_ 86. **N PEACOCKS STIPPLED PLATE W/ NARROW BASE AND RIBBED EXT. – MARI. (SCARCE AND DESIRABLE; SORTA PASTEL)**
- \_\_\_\_\_ 87. **N DANDELION/ KNIGHTS TEMPLAR HANDLED MUG – MARI. (RARE AND DESIRABLE; INSIDE WORN A BIT)**
- \_\_\_\_\_ 88. N Singing Bird Handled Mug – Dk. Mari. (super example)
- \_\_\_\_\_ 89. (2) N G & C Cologne Bottles and Stoppers – Dk. Mari. (scarce; nice color; selling choice)
- \_\_\_\_\_ 90. **N 8 SIDED HANDLED BUSHEL BASKET – ICE GREEN (RARE AND VERY DESIRABLE; NICE COLOR AND IRID.)**
- \_\_\_\_\_ 91. N 8 Sided Handled Bushel Basket – White (scarce; nice and frosty)
- \_\_\_\_\_ 92. **N BEADED CABLE FTD. RUFFLED ROSE BOWL – WHITE (RARE AND DESIRABLE; GETTING TOUGH TO FIND)**

- \_\_\_\_\_ 93. **N BLOSSOMTIME STEMMED RUFFLED COMPOTE – AMYTH. (VERY SCARCE PATTERN; NICE SATINY FINISH)**
- \_\_\_\_\_ 94. **N HARVEST POPPY STEMMED RUFFLED COMPOTE – MARI. (SCARCE; NICE COLOR AND IRID.)**
- \_\_\_\_\_ 95. **EUROPEAN RISING SUN FTD. HANDLED WATER PITCHER – DK. MARI. (NICE COLOR AND IRID. FOR THIS SCARCE ITEM)**
- \_\_\_\_\_ 96. East German Spittoon Shaped Crimped Edge Rose Bowl – Red (newer piece but quite impressive)
- \_\_\_\_\_ 97. **6" TALL X 8-1/2" TOP AUSTRALIAN BUTTERFLY BUSH STEMMED ROUND COMPOTE – MARI. (RARE ITEM; SCARCE SHAPE AND COLOR)**
- \_\_\_\_\_ 98. 4-1/4" Tall x 7-1/2" Top Australian Butterfly and Bells Stemmed 12 Ruffled Compote – Purp. (scarce; nice color and irid.)
- \_\_\_\_\_ 99. 4-1/4" Tall x 7" Top Australian Butterfly and Bells Stemmed Round Compote – Purp. (scarce; very nice color and irid.)
- \_\_\_\_\_ 100. **6" TALL X 9-1/4" TOP AUSTRALIAN BUTTERFLY BUSH STEMMED 12 RUFFLED COMPOTE – PURP. (RARE AND DESIRABLE PATTERN, SHAPE AND IRID.; NICE)**
- \_\_\_\_\_ 101. 6-1/2" Tall x 8" Top Australian Butterfly Bush Stemmed Round Compote – Purp. (rare and desirable; nice irid.)
- \_\_\_\_\_ 102. 4" Tall x 7" Top Australian Butterfly and Bells Stemmed Round Compote – Purp. (scarce; nice color and irid.)
- \_\_\_\_\_ 103. 4-1/2" x 7" Top Australian Butterfly and Bells Stemmed Round Compote – Mari. (very scarce color; nice item)
- \_\_\_\_\_ 104. 7-1/2" Australian Trailing Flowers Deep Round Bowl – Mari. (rare pattern; first I've seen)
- \_\_\_\_\_ 105. **9-1/2" AUSTRALIAN KANGAROO 16 RUFFLED BOWL – PURP. (RARE AND VERY DESIRABLE PATTERN; REALLY TOUGH ITEM)**
- \_\_\_\_\_ 106. 5-1/4" Australian Kangaroo 12 Ruffled Sauce – Mari. (scarce item; average detail)
- \_\_\_\_\_ 107. **9-1/2" AUSTRALIAN THUNDERBIRD LG. 12 RUFFLED BOWL – PURP. (VERY SCARCE; NICE COLOR AND DETAIL)**
- \_\_\_\_\_ 108. **5-1/4" AUSTRALIAN THUNDERBIRD 12 RUFFLED SAUCE – PURP. (HAS TO BE THE NICEST AUSTRALIAN ITEM I'VE SEEN)**
- \_\_\_\_\_ 109. 5-1/2" Australian "Style Dish" Round Bowl – Mari. (another item I have not seen before)
- \_\_\_\_\_ 110. **9" AUSTRALIAN NESTING SWAN LG. 16 RUFFLED BOWL – PURP. (VERY SCARCE; NICE COLOR AND IRID.)**
- \_\_\_\_\_ 111. 5-1/2" Australian Nesting Swan 12 Ruffled Sauce – Purp. (scarce; nice irid.)
- \_\_\_\_\_ 112. 5-1/4" Australian Nesting Swan 12 Ruffled Sauce – Mari. (scarce; nice irid.)
- \_\_\_\_\_ 113. **10-1/4" AUSTRALIAN MAGPIE LG. 8 RUFFLED BOWL – PURP. (VERY SCARCE; NICE COLOR AND IRID.)**
- \_\_\_\_\_ 114. 5-1/4" Australian Kingfisher 12 Ruffled Sauce – Purp. (scarce; nice irid.)
- \_\_\_\_\_ 115. **9-1/2" AUSTRALIAN KINGFISHER LG. 12 RUFFLED BOWL – PURP. (VERY SCARCE; NICE IRID. AND DETAIL)**
- \_\_\_\_\_ 116. **9-1/2" AUSTRALIAN KINGFISHER VARIANT W/ WATTLE LG. 12 RUFFLED BOWL – PURP. (VERY SCARCE; NICE IRID. AND DETAIL)**
- \_\_\_\_\_ 117. 9-3/4" Australian Kingfisher Variant w/ Wattle Lg. 12 Ruffled Bowl – Mari. (very scarce; nice irid.)
- \_\_\_\_\_ 118. **9" DUGAN DOUBLE STEM ROSE DOMED 10 RUFFLED BOWL – AMYTH. (VERY SCARCE AND VERY ATTRACTIVE; NICE)**
- \_\_\_\_\_ 119. 6-1/2" N'wood Thin Rib Exterior Stretch Cupped Rose Bowl – Blue Opaque (nice color)
- \_\_\_\_\_ 120. **N THREE FRUITS STIPPLED PLATE W/ RIBBED EXT. – ELEC. BLUE (RARE AND VERY DESIRABLE; SUPER BLUE HIGHLIGHTS)**
- \_\_\_\_\_ 121. N Fruit and Flowers Stemmed Handled Bon Bon – Dk. Mari. (nice color and irid.)
- \_\_\_\_\_ 122. **N POPPY SHOW 8 RUFFLED BOWL – WHITE (VERY SCARCE; REALLY NICE COLOR AND IRID.)**
- \_\_\_\_\_ 123. **N SINGING BIRDS 7 PC. WATER SET – GREEN (RARE AND DESIRABLE; GREAT COLOR AND IRID.)**
- \_\_\_\_\_ 124. N Strawberry 8 Ruffled Bowl w/ Plain Exterior – Emerald Green (very attractive item; nice irid.)
- \_\_\_\_\_ 125. **N ROSE SHOW FLARED PLATE – BLUE (RARE AND DESIRABLE; HAS SATINY FINISH)**
- \_\_\_\_\_ 126. **N GOOD LUCK STIPPLED 8 RUFFLED BOWL W/ NARROW BASE AND RIBBED EXT. – ELEC. BLUE (RARE AND DESIRABLE; NICE BLUE HIGHLIGHTS)**
- \_\_\_\_\_ 127. **N GOOD LUCK STIPPLED 8 RUFFLED BOWL W/ NARROW BASE AND RIBBED EXT. – PASTEL MARI. (RARE AND DESIRABLE; HAS NICE YELLOW HIGHLIGHTS)**
- \_\_\_\_\_ 128. **N G & C VARIANT STIPPLED BOWL W/ P.C.E. AND RIBBED EXT. – ELEC. BLUE (RARE AND DESIRABLE W/ NICE BLUE HIGHLIGHTS)**
- \_\_\_\_\_ 129. N G & C Variant Stippled 8 Ruffled Bowl w/ Ribbed Ext. – Elec. Blue (like above item; really nice)
- \_\_\_\_\_ 130. **N HEARTS AND FLOWERS 8 RUFFLED BOWL W/ RIBBED EXT. – PURP. (RARE AND VERY DESIRABLE; NICE BRIGHT IRID.)**
- \_\_\_\_\_ 131. Imperial Windmill Tumbler – Purp. (really nice example)
- \_\_\_\_\_ 132. **6" IMPERIAL GRAPE FLAT PLATE – PURP. (VERY SCARCE W/ EXCELLENT IRID.)**
- \_\_\_\_\_ 133. 6" Imperial Grape Flat Plate – Dk. Mari. (nice color)
- \_\_\_\_\_ 134. **IMPERIAL GRAPE WINE DECANTER AND STOPPER – PURP. (SUPER COLOR AND IRID.; ATTRACTIVE)**
- \_\_\_\_\_ 135. **IMPERIAL LOGANBERRY VASE – AMBER. (RARE AND DESIRABLE; BASE GLASS A BIT LIGHTER)**
- \_\_\_\_\_ 136. **IMPERIAL POPPY SHOW VASE – DK. MARI. (VERY SCARCE; NICE DARK SATINY FINISH)**
- \_\_\_\_\_ 137. 5-1/4" Tall Imperial Morning Glory and Drape Swung Flared Vase – Dk. Mari. (nice color and irid.)
- \_\_\_\_\_ 138. 9" Imperial Grape 8 Ruffled Bowl – Purp. (very scarce w/ bright irid.)
- \_\_\_\_\_ 139. 9" Imperial Grape 8 Ruffled Bowl – Purp. (another scarce example w/ bright irid.)
- \_\_\_\_\_ 140. **9-1/4" FENTON PEACOCK AT THE URN PLATE – BLUE (VERY ATTRACTIVE ITEM W/ BRIGHT MULTI-COLORED IRID.)**
- \_\_\_\_\_ 141. 9-3/4" Fenton Persian Medallion Bowl w/ 3 in 1 Edge – Blue (nice large example; attractive)
- \_\_\_\_\_ 142. 10-1/2" Fenton Two Flowers Lg. Ball Ftd. 8 Ruffled Bowl – Blue (very attractive example w/ blue highlights)
- \_\_\_\_\_ 143. **FENTON G & C FTD. RUFFLED SMALL SIZE FRUIT BOWL W/ PERSIAN MED. INT. – BLUE (ONE OF THE BETTER EXAMPLES; BRIGHT BLUE INTERIOR)**
- \_\_\_\_\_ 144. Pr. 7-3/4" Tall Fenton Diamond Rib Squatty Swung Vases – Amyth. (satiny finish; selling so much each for pair)
- \_\_\_\_\_ 145. **FENTON LOTUS AND POINSETTIA FTD. RUFFLED SAUCE – AMBER. (VERY SCARCE BASE COLOR; HAS SATINY FINISH)**
- \_\_\_\_\_ 146. Fenton Lotus and Poinsettia Ftd. Ruffled Sauce – Green (very scarce and very attractive)

- \_\_\_\_\_ 147. Fenton Lotus and Poinsettia Ftd. Ruffled Sauce – Mari./ Vaseline (scarce base color; nice irid.)
- \_\_\_\_\_ 148. **FENTON TWO ROW OPEN EDGE BASKETWEAVE 6 RUFFLED HAT – BLACK AMYTH. (SCARCE BASE COLOR)**
- \_\_\_\_\_ 149. Fenton Blackberry Two Row Open Edge Deep 6 Ruffled Hat – Green (scarce base color; nice)
- \_\_\_\_\_ 150. Fenton Blackberry Two Row Open Edge Deep 6 Ruffled Hat – Amyth. (scarce base color; scarce)

## START OF SECOND SESSION

- \_\_\_\_\_ 151. 7-1/2" Fenton G & C Low 8 Ruffled Bowl – Mari./ Vaseline (scarce base color; nice)
- \_\_\_\_\_ 152. 8" Fenton Concord Grape Deep Round Bowl w/ 3 in 1 Edge – Dk. Mari. (scarce pattern w/ nice irid.)
- \_\_\_\_\_ 153. 8" Fenton Persian Medallion Deep Round Bowl w/ 3 in 1 Edge – Mari. (scarce shape)
- \_\_\_\_\_ 154. 9-1/4" Fenton Dragon and Lotus Bowl w/ 3 in 1 Edge – Mari. (attractive shape)
- \_\_\_\_\_ 155. **9-1/4" FENTON HOLLY BOWL W/ 3 IN 1 EDGE – GREEN W/ TEAL TINT (VERY SCARCE AND VERY ATTRACTIVE; NICE)**
- \_\_\_\_\_ 156. 9-1/4" Fenton Holly Bowl w/ 3 in 1 Edge – Mari./ Vaseline (rare shape for this base color; nice)
- \_\_\_\_\_ 157. **9" FENTON HOLLY 8 RUFFLED BOWL – BLACK AMYTH. (VERY SCARCE ITEM; NICE SATINY FINISH)**
- \_\_\_\_\_ 158. 8-1/2" Fenton Holly Ice Cream Shaped Bowl – Amber. (actually quite a rare base color)
- \_\_\_\_\_ 159. **8-1/2" FENTON HOLLY ICE CREAM SHAPED BOWL – AMYTH. (A REAL BEAUTY; BRIGHT IRID.; NICE)**
- \_\_\_\_\_ 160. **M'BURG PERFECTION FLARED HANDLED WATER PITCHER – AMYTH. (VERY RARE AND DESIRABLE; PERFECT W/ GOLD HIGHLIGHTS)**
- \_\_\_\_\_ 161. M'burg Hanging Cherries Handled Creamer – Amyth. (scarce; satiny finish)
- \_\_\_\_\_ 162. M'burg Hanging Cherries Handled Spooner – Amyth. (scarce; satiny finish)
- \_\_\_\_\_ 163. M'burg Holly Sprig 2 Handled Card Tray – Green (satiny finish; nice)
- \_\_\_\_\_ 164. 7" M'burg Holly Sprig 6 Ruffled Bowl – Amyth. (radium; scarce)
- \_\_\_\_\_ 165. **M'BURG ZIG ZAG TRI-CORNERED BOWL W/ TIGHT CRIMPED EDGE – AMYTH. (RARE AND DESIRABLE; HAS NICE RADIUM FINISH; RARE SHAPE)**
- \_\_\_\_\_ 166. 10" M'burg Blackberry Wreath Lg. 6 Ruffled Bowl – Lt. Mari. (radium; has light irid.)
- \_\_\_\_\_ 167. 8" M'burg Grape Wreath Variant Round Bowl w/ 3 in 1 Edge – Mari. (radium and very attractive; nice)
- \_\_\_\_\_ 168. 8-1/4" M'burg Grape Wreath Variant 6 Ruffled Bowl – Green (radium and very attractive)
- \_\_\_\_\_ 169. 7" M'burg Grape Wreath 6 Ruffled Bowl – Green (radium w/ a marigold overlay)
- \_\_\_\_\_ 170. **CAMBRIDGE DOUBLE STAR HANDLED WATER PITCHER – GREEN (VERY SCARCE; NICE COLOR AND IRID.)**
- \_\_\_\_\_ 171. Imperial Brocaded Daffodil Stemmed 8 Sided Compote – Clear/ Irid. (scarce; really nice irid.)
- \_\_\_\_\_ 172. "Hammer's Bubbles of Health" Soda Bottle – Green (unusual; don't remember seeing too many)
- \_\_\_\_\_ 173. Westmoreland Orange Peel Stemmed Sherbet – Mari. (rare shape for this pattern; tough)

- \_\_\_\_\_ 174. **WESTMORELAND CORINTH J.I.P. VASE – MARI./ MILK GLASS (RARE AND DESIRABLE; HAVEN'T SEEN MANY LATELY)**
- \_\_\_\_\_ 175. **DUGAN FARMYARD SQUARE RUFFLED BOWL W/ J.H. EXT. – PURP. (VERY RARE; VERY DESIRABLE; VERY ATTRACTIVE)**
- \_\_\_\_\_ 176. **DUGAN DOGWOOD SPRAYS DOMED 10 RUFFLED BOWL – PURP. (SUPER BLUE HIGHLIGHTS; WOW!)**
- \_\_\_\_\_ 177. **DUGAN BORDER PLANTS DOMED HANDGRIP PLATE – PURP. (RARE AND DESIRABLE SHAPE; HAS SATINY FINISH)**
- \_\_\_\_\_ 178. Dugan Pods and Posies Ruffled 2 Sided Banana Dish – Purp. (very scarce and desirable shape; has satiny finish)
- \_\_\_\_\_ 179. **11-3/4" DUGAN VICTORIAN LG. 8 RUFFLED BOWL – PURP. (RARE AND DESIRABLE PATTERN; SATINY FINISH)**
- \_\_\_\_\_ 180. **DUGAN PERSIAN GARDEN RUFFLED FRUIT BOWL AND BASE – AMYTH. (RARE AND VERY DESIRABLE; ATTRACTIVE ITEM W/ GOLD, RED AND BLUE HIGHLIGHTS)**
- \_\_\_\_\_ 181. **DUGAN FORMAL HATPIN HOLDER – PURP. (RARE AND DESIRABLE ITEM; SORTA SATINY FINISH)**
- \_\_\_\_\_ 182. Dugan S Repeat Handled Nappy From Punch Cup – Purp. (scarce shape)
- \_\_\_\_\_ 183. Dugan Beaded Panels Tri-Cornered Crimped Edge Stemmed Compote – P. Opal. (really nice color and opal.)
- \_\_\_\_\_ 184. 4-1/2" Tall x 6-3/4" Top Dugan Thin Rib Squatty Flared Vase – P. Opal. (scarce shape)
- \_\_\_\_\_ 185. **DUGAN BROOKLYN BRIDGE 10 RUFFLED BOWL – MARI. (RARE AND DESIRABLE; SORTA RADIUM FINISH)**
- \_\_\_\_\_ 186. 9-1/4" Dugan Windflower Flat Plate – Mari. (very scarce; nice satiny finish)
- \_\_\_\_\_ 187. Dugan Constellation Stemmed 6 Ruffled Compote – White (scarce; frosty w/ really nice irid.)
- \_\_\_\_\_ 188. 8-1/2" Dugan Round Up Low I.C. Shaped Bowl – White (super irid.; attractive)
- \_\_\_\_\_ 189. 9" Dugan Apple Blossom Twig Bowl w/ 3 in 1 Edge – White (scarce shape for this color; attractive)
- \_\_\_\_\_ 190. 10-3/4" Dugan Big Basketweave Swung Vase – White (very scarce; frosty w/ super irid.)
- \_\_\_\_\_ 191. **12-1/2" TALL X 4-3/4" BASE N TREE TRUNK MID SIZE SWUNG VASE – WHITE (RARE AND VERY DESIRABLE; FROSTY AND PERFECT)**
- \_\_\_\_\_ 192. 13-1/4" Tall x 4-3/4" Base N Thin Rib Mid Size Swung Vase – Mari. (nice color and size)
- \_\_\_\_\_ 193. 10-1/2" Tall N Leaf Columns Swung Vase – Amyth. (attractive pattern; nice)
- \_\_\_\_\_ 194. 9-3/4" Tall N Tree Trunk Standard Swung Vase – Blue (scarce base color; nice irid.)
- \_\_\_\_\_ 195. **10-1/2" TALL N TREE TRUNK STANDARD SWUNG VASE – ELEC. BLUE W/ OPAL. STREAKS (A BEAUTY W/ WHITE OPAL. STREAKS AT THE BASE; REALLY NICE IRID.)**
- \_\_\_\_\_ 196. N Three Fruits Bowl w/ P.C.E. and Basketweave Ext. – Purp. (satiny irid.; nice)
- \_\_\_\_\_ 197. N Fruit and Flowers Stemmed Handled Bon Bon – Elec. Purple (super bright irid.; really nice)
- \_\_\_\_\_ 198. N Three Fruits Medallion Ruffled Bowl w/ Meander Ext. – Purp. (attractive item; nice irid.)
- \_\_\_\_\_ 199. **N GREEK KEY 8 RUFFLED BOWL W/ BASKETWEAVE EXT. – PURP. (VERY ATTRACTIVE EXAMPLE; BRIGHT IRID.)**

- \_\_\_\_\_ 200. **N IVY TOWN PUMP NOVELTY – PURP. (PERFECT W/ NICE GOLDISH HIGHLIGHTS)**
- \_\_\_\_\_ 201. N Peacocks 8 Ruffled Bowl w/ Ribbed Ext. – Purp. (very scarce; nice color and irid.)
- \_\_\_\_\_ 202. N Peacock at the Urn Ind. Ice Cream Bowl – Blue (scarce; nice irid.)
- \_\_\_\_\_ 203. N Drapery Tri-Cornered Candy Dish – Dk. Mari. (nice dark example; good toes)
- \_\_\_\_\_ 204. N Springtime Spooner – Dk. Mari. (excellent example; nice)
- \_\_\_\_\_ 205. **PAIR 8-1/2" TALL N FLORENTINE STRETCH CANDLESTICKS W/ GOLD DECOR. – CELESTE BLUE (GOLD DECOR. MAKES THESE RARE)**
- \_\_\_\_\_ 206. 7-1/2" N Rosette 3 Ftd. Deep 8 Ruffled Bowl – Purp. (satiny finish)
- \_\_\_\_\_ 207. 8-1/2" N Grape Leaves Bowl w/ 3 in 1 Edge – Green (quite a rare shape; nice item)
- \_\_\_\_\_ 208. 8-1/4" N Star of David and Bows Domed 8 Ruffled Bowl – Amyth. (satiny finish)
- \_\_\_\_\_ 209. (3) N Valentine (or Sweetheart) Ind. Round Berry Bowls – Mari. (rare pattern; selling choice)
- \_\_\_\_\_ 210. **N ROUND HANDLED BUSHEL BASKET – AQUA OPAL. (A VERY ATTRACTIVE EXAMPLE; NICE COLOR AND IRID.; SORTA PASTEL)**
- \_\_\_\_\_ 211. N Round Handled Bushel Basket – Blue (scarce; nice color and irid.)
- \_\_\_\_\_ 212. N 8 Sided Handled Bushel Basket – White (frosty; scarce)
- \_\_\_\_\_ 213. N 8 Sided Handled Bushel Basket – Purp. (scarce shape)
- \_\_\_\_\_ 214. **N RASPBERRY HANDLED MILK PITCHER – GREEN (VERY SCARCE; VERY ATTRACTIVE)**
- \_\_\_\_\_ 215. **N G & C TABLE SIZE HANDLED WATER PITCHER – GREEN (REALLY NICE EXAMPLE IF YA WANT ONE!)**
- \_\_\_\_\_ 216. **N G & C 6 PC. WATER SET – PURP. (THE COLOR AND IRID. ARE WELL ABOVE AVERAGE)**
- \_\_\_\_\_ 217. N G & C 7 Pc. Berry Set – Purp. (nice well matched set; nice irid.)
- \_\_\_\_\_ 218. N G & C Variant 8 Ruffled Bowl w/ Plain Ext. – Amyth. (very attractive; has bright highlights)
- \_\_\_\_\_ 219. N G & C Covered Sweetheart Compote – Purp. (scarce; nice color and irid.)
- \_\_\_\_\_ 220. **(2) N G & C FTD. HATPIN HOLDERS – PURP. (BOTH ARE NICE AND SATINY; SELLING CHOICE)**
- \_\_\_\_\_ 221. N G & C Whiskey Decanter and Stopper – Lt. Mari. (scarce item; has average color and irid.)
- \_\_\_\_\_ 222. N Leaf and Beads Ftd. Rose Bowl – Purp. (nice color and irid.)
- \_\_\_\_\_ 223. N Double Loop Chalice or Open Sugar – Blue (nice color and irid.)
- \_\_\_\_\_ 224. N Beaded Cable Ftd. Ruffled Rose Bowl – Purp. (nice color)
- \_\_\_\_\_ 225. N Drapery Rose Bowl – Purp. (really nice example; has small flake on pattern)
- \_\_\_\_\_ 226. (6) N Raspberry Tumblers – Purp. (irid. ranges from poor to great; selling choice)
- \_\_\_\_\_ 227. (6) N Grape and Gothic Arches Tumblers – Blue (scarce; selling so much each for sei)
- \_\_\_\_\_ 228. Fenton Prism Band Tumbler w/ Enameled Forget-Me-Not Decor. – Green (scarce if you're looking for one)
- \_\_\_\_\_ 229. **FENTON LILY OF THE VALLEY TUMBLER – BLUE (RARE AND DESIRABLE; HAS A SATINY FINISH)**
- \_\_\_\_\_ 230. **7-1/2" FENTON LIONS FLAT PLATE – MARI. (RARE AND VERY DESIRABLE; GREAT COLOR AND DETAIL)**
- \_\_\_\_\_ 231. 7" Fenton Lions 6 Ruffled Bowl – Mari. (scarce; nice color and irid.)
- \_\_\_\_\_ 232. 9-1/2" Tall Fenton April Showers Vase w/ T.C.E. – Amyth. (scarce and attractive shape)
- \_\_\_\_\_ 233. 7" Tall Fenton Three Diamonds and Bows Swung Vase – Blue (scarce pattern; satiny irid.)
- \_\_\_\_\_ 234. 11-1/4" Tall Fenton Rustic Standard Swung Vase – White (frosty and scarce)
- \_\_\_\_\_ 235. **FENTON ORANGE TREE HANDLED LOVING CUP – GREEN (VERY SCARCE AND DESIRABLE; REALLY NICE EXAMPLE)**
- \_\_\_\_\_ 236. **7" FENTON HORSEHEAD MEDALLION 6 RUFFLED BOWL – GREEN (RARE COLOR FOR THIS PATTERN IN THIS SHAPE)**
- \_\_\_\_\_ 237. 7-1/2" Fenton Acorns Low 8 Ruffled Bowl – Green (very scarce base color; nice example)
- \_\_\_\_\_ 238. Fenton Two Row Open Edge Basketweave Lg. Size 4 Sided Hat – White (very scarce; nice color and frosty)
- \_\_\_\_\_ 239. Fenton Holly 6 Ruffled Stemmed Compote – Amyth. (scarce base color)
- \_\_\_\_\_ 240. **FENTON MIKADO LG. STEMMED 8 RUFFLED COMPOTE – POWDER BLUE/ MARI. (VERY SCARCE BASE COLOR; ODD TINT W/ SATINY FINISH)**
- \_\_\_\_\_ 241. **4-1/2" FENTON KITTENS FLAT PLATE – MARI. (VERY SCARCE ITEM; NICE COLOR AND IRID.)**
- \_\_\_\_\_ 242. Fenton Kittens 4 Sided Bowl – Dk. Mari. (nice color and irid.)
- \_\_\_\_\_ 243. Fenton Kittens 2 Sided Banana Dish – Mari. (scarce; nice color)
- \_\_\_\_\_ 244. Fenton Kittens Cereal Bowl – Lt. Mari. (light in color)
- \_\_\_\_\_ 245. **FENTON KITTENS 4 RUFFLED TOOTHPICK HOLDER – BLUE (VERY SCARCE; NICE COLOR AND IRID.)**
- \_\_\_\_\_ 246. **EUROPEAN 5 PC. SAMOVAR SET – DK. MARI. (UNUSUAL SET W/ GREAT COLOR; HAS SWAN FINIAL)**
- \_\_\_\_\_ 247. 7-1/2" Tall x 8-1/2" Top European Laurel Band and Bows Compote – Mari. (scarce pattern)
- \_\_\_\_\_ 248. Newer Elks Ashtray – Clear Irid.
- \_\_\_\_\_ 249. Imperial Columbia Domed 6 Ruffled Vase – Dk. Mari. (nice dark color and irid.)
- \_\_\_\_\_ 250. **IMPERIAL GRAPE 7 PC. WATER SET – PURP. (SUPER COLOR AND IRID.; VERY WELL MATCHED)**
- \_\_\_\_\_ 251. 10-1/2" Imperial Grape 8 Ruffled Master Berry Bowl – Purp. (super color and irid.; nice item)
- \_\_\_\_\_ 252. Imperial Embossed Scroll 7 Pc. Berry Set w/ File Ext. – Dk. Mari. (nice well matched set w/ great color)
- \_\_\_\_\_ 253. Imperial Optic and Button Stemmed Goblet – Mari. (scarce item; signed w/ Iron Cross)
- \_\_\_\_\_ 254. 17-3/4" Tall x 5" Base Imperial(?) Thin Rib Lg. Swung Mid Size Vase – Mari./ Clear (scarce item; nice size)
- \_\_\_\_\_ 255. **10-1/2" TALL IMPERIAL RIPPLE STANDARD SWUNG VASE – AQUA/TEAL (VERY SCARCE BASE COLOR; ATTRACTIVE PASTEL ITEM)**
- \_\_\_\_\_ 256. 14-3/4" Tall x 4" Base Imperial Ripple Mid Size Swung Vase – Purp. (nice size w/ great irid.; attractive)
- \_\_\_\_\_ 257. 11" Tall x 3-1/2" Base Imperial Ripple Standard Swung Vase – Honey Amber. (great irid.)
- \_\_\_\_\_ 258. **9-1/2" TALL X 5-1/2" BASE IMPERIAL ZIPPER LOOP MID SIZE KEROSENE LAMP – DK. MARI. (SCARCE; NICE SIZE AND IRID.)**
- \_\_\_\_\_ 259. 6" Tall Imperial Miniature Morning Glory Miniature Swung Vase – Smoke (rare and desirable; nice color and irid.)
- \_\_\_\_\_ 260. **IMPERIAL OPEN ROSE FLAT PLATE – AMBER. (REALLY NICE EXAMPLE; SUPER IRID.)**
- \_\_\_\_\_ 261. **N THREE FRUITS MEDALLION FTD. RUFFLED BOWL W/ MEANDER EXT. – AQUA OPAL. (RARE AND DESIRABLE; AVERAGE OPAL. AND IRID.)**
- \_\_\_\_\_ 262. **FENTON TWO ROW OPEN EDGE BASKETWEAVE J.I.P. HAT – RED (SCARCE; NICE SATINY FINISH)**
- \_\_\_\_\_ 263. Imperial Grape Nut Bowl – Purp. (rare shape for this pattern w/ average irid.)

- \_\_\_\_\_ 264. **IMPERIAL EMBOSSED SCROLL ROUND STEMMED MINIATURE COMPOTE – PURP. (VERY SCARCE; GREAT IRID.; NICE)**
- \_\_\_\_\_ 265. **IMPERIAL LUSTRE ROSE LG. FTD. RUFFLED FRUIT BOWL – PURP. (VERY RARE AND VERY DESIRABLE; SUPER IRID.)**
- \_\_\_\_\_ 266. **IMPERIAL LUSTRE ROSE LG. FTD. RUFFLED FRUIT BOWL – RED (VERY RARE AND VERY DESIRABLE; GETTIN' TOUGH)**
- \_\_\_\_\_ 267. Imperial Star of David 8 Ruffled Bowl – Purp. (super example w/ great color and irid.)
- \_\_\_\_\_ 268. Imperial Pansy 8 Ruffled Bowl – Purp. (nice color and irid.)
- \_\_\_\_\_ 269. 5"-6" Tall Imperial Jewels Cupped in Cylinder Vase – Purp. (very scarce; signed w/ Iron Cross)
- \_\_\_\_\_ 270. **IMPERIAL HOMESTEAD NU ART CHOP PLATE, NOT SIGNED – LT. SMOKE (RARE AND VERY DESIRABLE; FROSTY W/ AN ODD TINT)**
- \_\_\_\_\_ 271. 10" Dugan Petal and Fan Lg. 6 Ruffled Bowl w/ Jeweled Heart Ext. – Purp. (really nice example; exceptional irid.)
- \_\_\_\_\_ 272. 9" Dugan Apple Blossom Twig Flat Plate – Amyth. (very scarce and desirable; satiny irid.)
- \_\_\_\_\_ 273. 9" Dugan Fanciful Flat Plate – Blue (very scarce and desirable; satiny)
- \_\_\_\_\_ 274. 9" Dugan Cherries Ice Cream Shaped Bowl w/ Jewel Heart Ext. – Amyth. (rare shape; satiny finish)
- \_\_\_\_\_ 275. **N HEARTS AND FLOWERS STEMMED RUFFLED COMPOTE – AQUA OPAL. (RARE AND VERY DESIRABLE; NICE COLOR AND OPAL.)**
- \_\_\_\_\_ 276. N Daisy and Plume Ftd. Ruffled Candy Dish w/ Raspberry Int. – Mari. (sorta pastel; nice color and irid.)
- \_\_\_\_\_ 277. **12" TALL TREE TRUNK MID SIZE SWUNG VASE – GREEN (VERY SCARCE AND DESIRABLE; REALLY NICE EXAMPLE)**
- \_\_\_\_\_ 278. 6" Tall N Tree Trunk Squatty Swung Vase – Green (desirable size; nice color and irid.)
- \_\_\_\_\_ 279. N Three Fruits Flat Plate w/ Basketweave Ext. – Purp. (quite a nice example; bright highlights)
- \_\_\_\_\_ 280. **N POPPY SHOW RUFFLED BOWL – DK. MARI. (VERY SCARCE AND DESIRABLE; DARK COLOR AND IRID.)**
- \_\_\_\_\_ 281. N Peacocks Bowl w/ P.C.E. and Ribbed Ext. – Purp. (very scarce; has bright color and irid.)
- \_\_\_\_\_ 282. **9" M'BURG PEACOCK AT THE URN "MYSTERY" BOWL W/ 3 IN 1 EDGE – MARI. (RARE AND NICE; HAS NICE SATINY FINISH)**
- \_\_\_\_\_ 283. 9-1/2" M'burg Rays and Ribbons Bowl w/ 3 in 1 Edge – Green (radium and very desirable; nice)
- \_\_\_\_\_ 284. 9-1/2" M'burg Primrose 6 Ruffled Bowl – Green (radium and desirable)
- \_\_\_\_\_ 285. **M'BURG FLEUR DE LEI DOMED RUFFLED CRIMPED EDGE BOWL – GREEN (RADIUM AND RARE; GREAT COLOR AND IRID.)**
- \_\_\_\_\_ 286. 9-1/2" M'burg Whirling Leaves Bowl w/ 3 in 1 Edge – Amyth. (very scarce shape; has really nice radium irid.)
- \_\_\_\_\_ 287. 9-1/2" M'burg Whirling Leaves 6 Ruffled Bowl – Green (radium and very attractive)
- \_\_\_\_\_ 288. 9-1/2" M'burg Primrose Bowl w/ Crimped Edge – Green (radium and very desirable; nice)
- \_\_\_\_\_ 289. Fenton Bouquet Tumbler – Blue (has attractive irid.; nice)
- \_\_\_\_\_ 290. **9" FENTON PERSIAN MEDALLION FLAT PLATE – BLUE (RARE AND DESIRABLE; PRETTY NICE EXAMPLE)**
- \_\_\_\_\_ 291. **FENTON HOLLY RUFFLED HAT – RED (VERY SCARCE AND DESIRABLE; NICE COLOR)**
- \_\_\_\_\_ 292. 8-1/2" Fenton Heart and Vine Bowl w/ Crimped Edge – Green (really nice example w/ bright highlights)
- \_\_\_\_\_ 293. 8" Tall Imperial Stretch Swung Vase – Red (rare and desirable; nice)
- \_\_\_\_\_ 294. N Blossomtime Blank Stemmed Ruffled Compote – Green (rare; exterior pattern for blossom time)
- \_\_\_\_\_ 295. 8"-9" Tall Devilbiss Style Perfume Atomizer, No Bulb – Mari. (scarce large size)
- \_\_\_\_\_ 296. **U.S. GLASS PEACOCK LAMP – RED (RARE AND VERY DESIRABLE; SUPER IRID.)**
- \_\_\_\_\_ 297. Dugan Vineyard Tumbler – Purp. (scarce; average irid.)
- \_\_\_\_\_ 298. N Singing Bird Tumbler – Purp. (really nice irid.)
- \_\_\_\_\_ 299. N G & C Sweetmeat Compote Base Only – Purp. (scarce part; average irid.)
- \_\_\_\_\_ 300. N Peacock at the Fountain Ind. Berry Bowl – Mari. (nice color)
- \_\_\_\_\_ 301. **10-1/4" TALL N TREE TRUNK STANDARD SWUNG VASE – SAPPHIRE (RARE AND DESIRABLE BASE COLOR; HAS MARIGOLD OVERLAY)**
- \_\_\_\_\_ 302. **18-3/4" TALL X 5-1/4" BASE N TREE TRUNK LG. SWUNG FUNERAL VASE – MARI. (HAS LARGE CHIP OFF BASE; BUT A GREAT SHELF PIECE)**
- \_\_\_\_\_ 303. 10-1/4" Tall N Diamond Point Swung Vase – Mari. (nice irid.)
- \_\_\_\_\_ 304. N G & C Handled Bon Bon w/ Basketweave Ext. – Green (nice color and irid.)
- \_\_\_\_\_ 305. N Fruit and Flowers Stemmed Handled Bon Bon – Mari. (nice color and irid.)
- \_\_\_\_\_ 306. N Poppy Ruffled Relish Tray – Blue (scarce; nice reddish irid.)
- \_\_\_\_\_ 307. N Peacocks Ruffled Bowl w/ Ruffled Ext. – Blue (scarce but irid. is lacked inside)
- \_\_\_\_\_ 308. N Strawberry Bowl w/ P.C.E. and Ribbed Ext. – Purp. (nice satiny example)
- \_\_\_\_\_ 309. N Star of David and Bows Domed Deep 8 Ruffled Bowl – Amyth. (satiny finish)
- \_\_\_\_\_ 310. N Wishbone Ftd. Ruffled Bowl w/ Ruffles and Rings Ext. – Mari. (nice color)
- \_\_\_\_\_ 311. **FENTON RAGGED ROBIN BOWL W/ 3 IN 1 EDGE – GREEN (VERY SCARCE PATTERN; NICE IRID.)**
- \_\_\_\_\_ 312. Fenton Dragon and Lotus 8 Ruffled Bowl – Blue (nice example; great detail)
- \_\_\_\_\_ 313. (2) Fenton Vintage Grape 8 Ruffled Bowls w/ Crimped Edge – Blue Opal. (not carnival; selling choice)
- \_\_\_\_\_ 314. 8" Fenton Persian Medallion Bowl w/ 3 in 1 Edge – Mari. (scarce)
- \_\_\_\_\_ 315. Fenton Blackberry Bramble Stemmed Ruffled Compote – Amyth.
- \_\_\_\_\_ 316. Fenton Ribbed Bulbous Based Ruffled Vase w/ Polished Pontil – Mari. (may be called "Ruffled Rib"; scarce pattern)
- \_\_\_\_\_ 317. Fenton Persian Medallion Lg. Stemmed Ruffled Crimped Edge Compote – Blue (nice satiny finish)
- \_\_\_\_\_ 318. 6-1/4" Tall Maker(?) Rings Flared Vase – Mari. (odd pattern)
- \_\_\_\_\_ 319. Pr. Imperial Wide Panel Bell Shaped Candlesticks – Mari. (nice pair; nice color)
- \_\_\_\_\_ 320. 13-1/2" Tall x 4-1/2" Base Imperial Morning Glory Swung Vase – Mari. (nice color, size and irid.)
- \_\_\_\_\_ 321. 11-1/2" Tall Imperial Ripple Mid Size Swung Vase – Purp. (attractive item; really nice irid.)
- \_\_\_\_\_ 322. 6-1/2" Imperial Heavy Grape Deep Round Bowl – Purp. (nice color and irid.)
- \_\_\_\_\_ 323. Imperial Columbia Domed Ftd. Plate – Mari. (scarce shape; nice irid.)
- \_\_\_\_\_ 324. Imperial Columbia Domed Ruffled Vase – Mari. (nice irid.)
- \_\_\_\_\_ 325. Fenton 2 Pc. Tumble Up – Mari. (scarce item)
- \_\_\_\_\_ 326. Surprise!



# BURNS

**AUCTION SERVICE**

P.O. BOX 608 • BATH, NEW YORK 14810

## Great Lakes Carnival Glass Club Convention Auction

Friday & Saturday, August 25 & 26, 2000

**Friday:** Preview – 4:00 P.M.  
Auction – 6:00 P.M. (Lots 1-150)

**Saturday:** Preview – 8:00 A.M.  
Auction – 10:00 A.M. (Lots 151-End)

First Class Mail  
U.S. Postage  
PAID  
Eugene, Oregon  
Permit No. 305

