

CARNIVAL GLASS AUCTION

ALABAMA COLLECTION

Saturday, August 19, 2000 9:00 a.m. C.D.T.
Mickey Reichel Antique & Auction L.C.

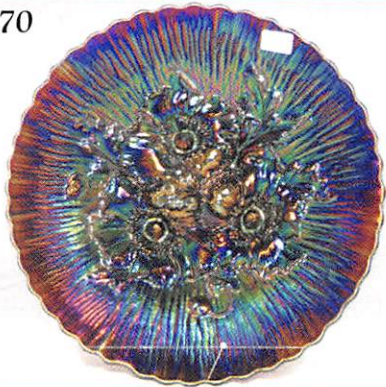
Held Inside the Mickey Reichel Auction Center, Boonville, Missouri
Office: 660-882-5292 • Home: 660-882-5283



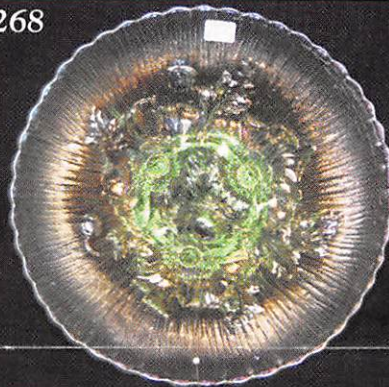
Direct e-mail: mreichel@undata.com



270



268



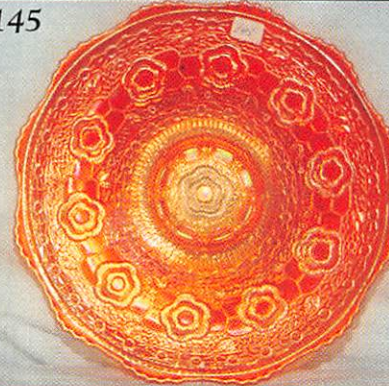
144



103



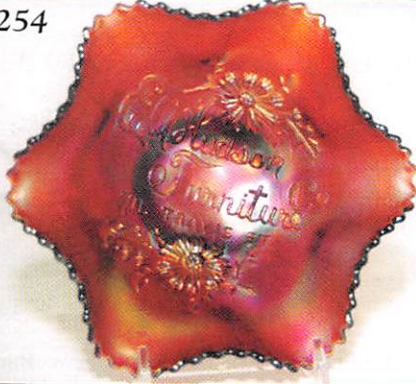
145



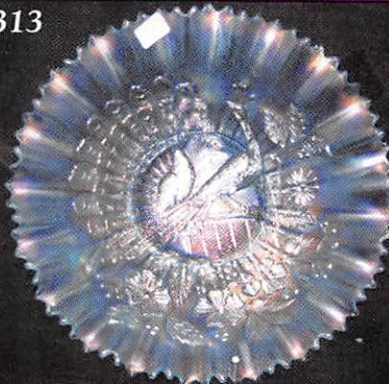
93



254



313



92



NO BUYERS PREMIUM

Held Inside the Mickey Reichel Auction Center

1 Mile North of I-70 on Hwy. 5, Exit 101, Boonville, Missouri • 20 Miles West of Columbia, MO on I-70
Preview Friday 12 p.m. - 6 p.m. and 7:30 a.m. - 9:00 a.m. Day of Auction

 **Make Reservations EARLY at one of these local motels:**

Days Inn: 660-882-8624 • Comfort Inn: 660-882-5317 • Super 8: 660-882-2900


Auction Consists of Rarity, Great Irid. and Variety

WRITE IN BIDS: If you are unable to attend the auction, we will be happy to accept absentee bids which must be received by THURSDAY, AUGUST 17, 2000. Don't Delay.

FOR AUCTION PRICE RESULTS: Send \$3.00 and Large S.A.S.E. to 516 Third Street, Boonville, MO 65233-1536


PLEASE NOTE: There is a \$5 handling charge for each successful bid which will be added to the selling price for all write-in bids. This is in addition to the cost of postage, insurance and packing. Your write-in bid will be entered just as if you are present and bidding. Successful bidders will be notified in 1 to 3 days by the auctioneer (so be sure to include your phone number). Direct mail bids to Auctioneer Mickey Reichel, 516 Third Street, Boonville, MO 65233-1536. Terms: Cash or Check accepted with proper I.D. and Social Security Number and References. Announcements made day of the auction supercede all printed material. Not Responsible for Accidents or Sold Items.

No return on any items once they leave the Auction Center (No Exceptions).****

 **Call for additional information: 660-882-5292 days or 660-882-5283 evenings before 9:00 p.m.**

FAX: 660-882-5292 (evening hours start FAX transmission after beep)

MAIL BIDS: Items are bid on in perfect condition with average or above iridescence OR as listed in the brochures. Bids will not be carried out when damage on an item has been found during the auction.

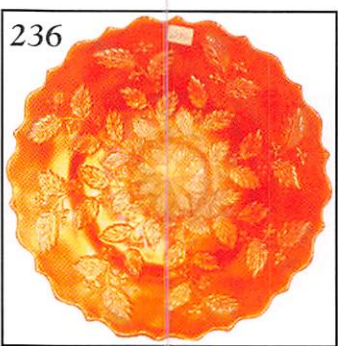
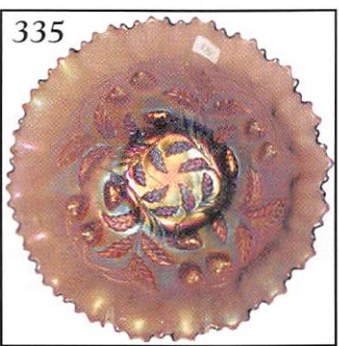
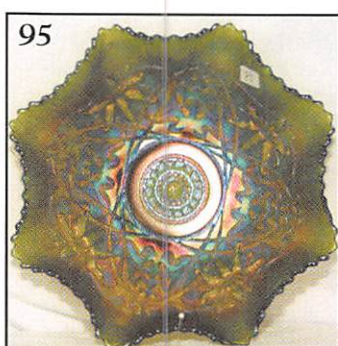
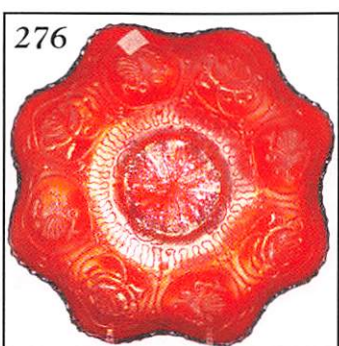
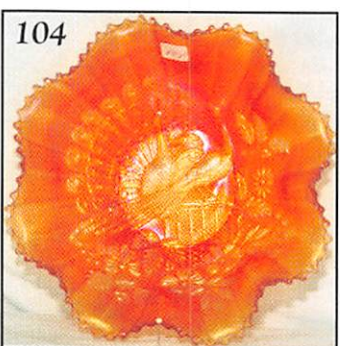
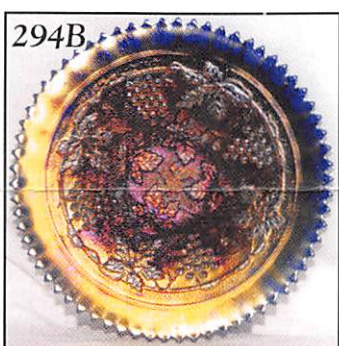
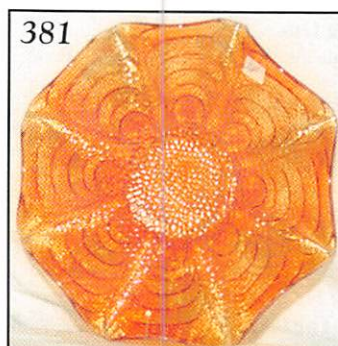
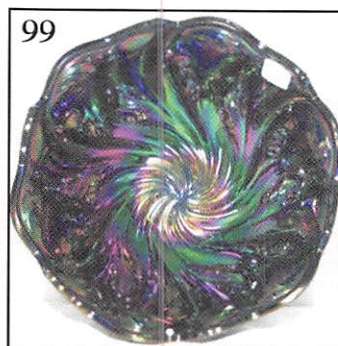
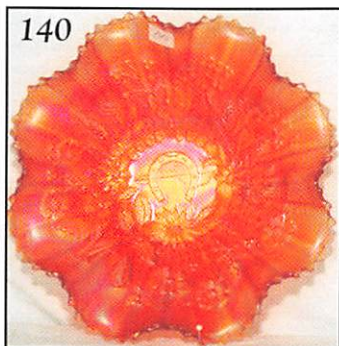
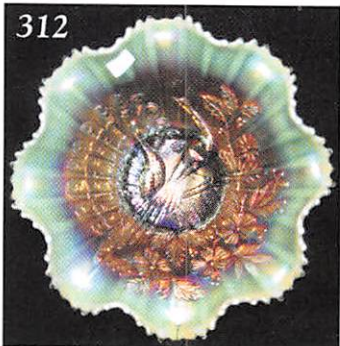
 **PEOPLE PRESENT AT AUCTION ARE RESPONSIBLE FOR FINDING ANY PINHEADS, WEAR, SPOTTINESS, MANUFACTURER'S DEFECTS OR ANY OTHER MINOR FLAWS, ETC.**

 **NOTE: Read each line, as we have accentuated the type of no particular piece, all are special.**

THANK YOU FOR ATTENDING TODAY

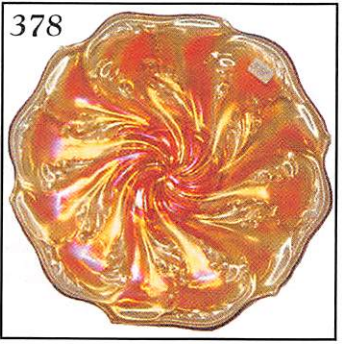
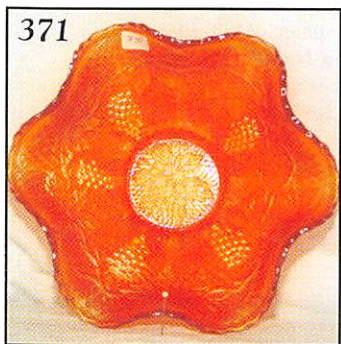
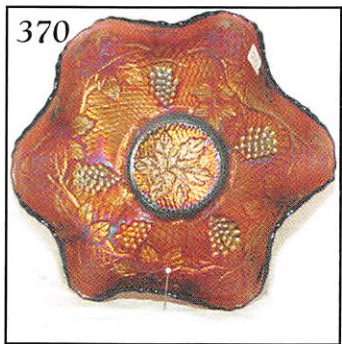
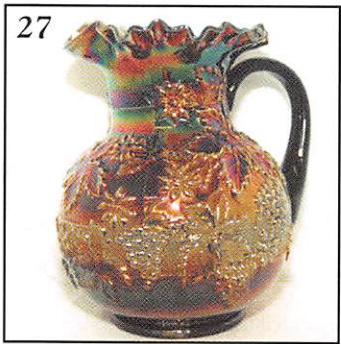
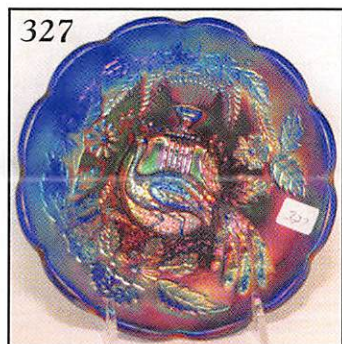
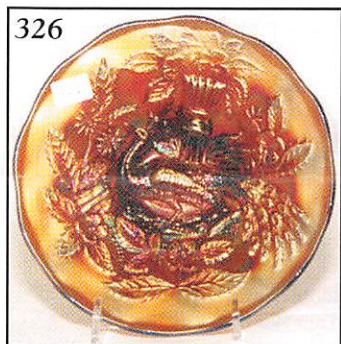
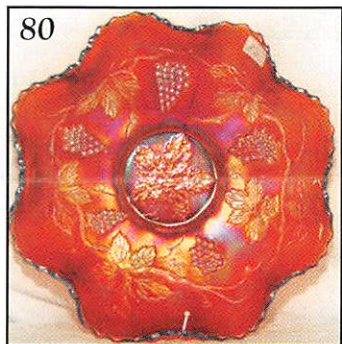
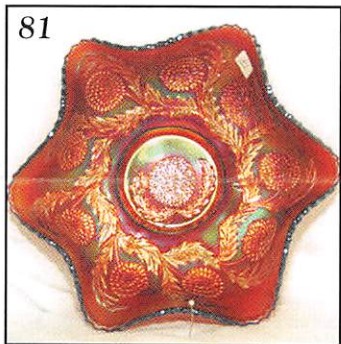
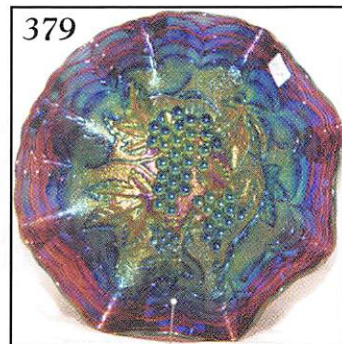
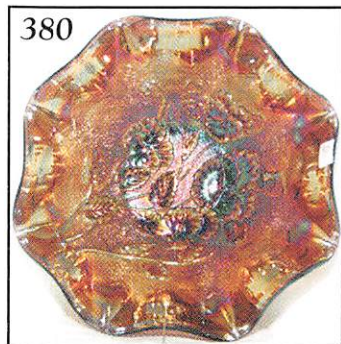
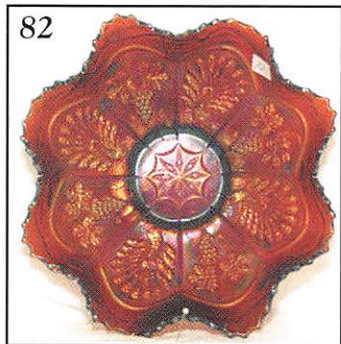
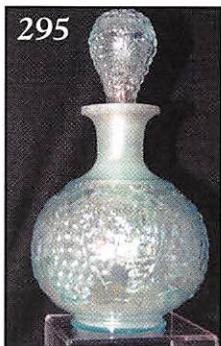
- | | | | |
|-------|---|-------|--|
| _____ | 1. B - Butterfly & Berry Tumbler - A Beauty | _____ | 23. Radium Elec. B - Blueberry Water Pitcher - Super Rare) - A Show Stopper |
| _____ | 2. M - Octagon Tumbler - Dark | _____ | 24. B - Blueberry Tumbler |
| _____ | 3. B - Paneled Dandelion Tumbler | _____ | 25. M - <u>Extra Nice</u> Heavy Iris Tankard w/5 Tumblers |
| _____ | 4. M - Paneled Dandelion Tumbler - Dark - Rich | _____ | 26. Super B - Fenton Floral & Grape Pitcher w/4 Tumblers |
| _____ | 5. M - Harvest Flower Tumbler - Very Scarce | _____ | 27. A - Dugan Floral & Grape Pitcher - Above Ave. |
| _____ | 6. M - Scale Band Tumbler - Super Color | _____ | 28. A - Floral & Grape, Radium, Tumbler |
| _____ | 7. M - Diamond & Daisy Cut Tumbler - Rare | _____ | 29. Dark M - Butterfly & Berry Butter Dish |
| _____ | 8. G - Double Star Tumbler | _____ | 30. Dark M - Butterfly & Berry Sugar Bowl w/Lid |
| _____ | 9. M - Fenton Waterlily & Cattail Tumbler - Exceptional Color | _____ | 31. M - Butterfly & Berry Creamer |
| _____ | 10. P - Grapevine & Lattice Tumbler - Multi Radium | _____ | 32. M - Butterfly & Berry Spooner |
| _____ | 11. M - Apple Tree Tumbler - Scarce | _____ | 33. Rich G - 8 ³ / ₄ " Ruffled Fenton Vintage Bowl |
| _____ | 12. P - <u>N</u> Raspberry Tumbler - Super Multi Elec. | _____ | 34. Scarce G - 7 ¹ / ₂ " Ruffled Fruits & Flowers Bowl |
| _____ | 13. M - Greek Key Tumbler - Scarce | _____ | 35. Amber - 8 ¹ / ₂ " Imp. Ripple Vase, 4 ¹ / ₂ " Top & 2 ³ / ₈ " Base - Beautiful |
| _____ | 14. M - Bouquet Tumbler | _____ | 36. Amber - 13 ¹ / ₂ " Imp. Ripple Vase, 5" Top & 3 ³ / ₈ " Base |
| _____ | 15. A - Maple Leaf Tumbler - Great One | _____ | 37. P - 12 ³ / ₄ " Swung Imp. Ripple Vase |
| _____ | 16. M - Star & File Tumbler - Very Pretty | _____ | 38. Teal - 7" Imp. Ripple Vase, 4" Top & 2 ¹ / ₂ " Base |
| _____ | 17. B - <u>N</u> Peach Tumbler | _____ | 39. P - 8" Squatty Imp. Ripple Vase, 5 ¹ / ₂ " Top & 3 ³ / ₈ " Base - Super Irid. - Beauty |
| _____ | 18. M - Star Medallion Tumbler - Very Pretty | _____ | 40. Helios G - 9 ¹ / ₂ " Imp. Ripple Vase, 5" Top & 3 ³ / ₈ " Base |
| _____ | 19. G - Butterfly & Fern Tumbler - Scarce | _____ | 41. M - 11 ³ / ₄ " Imp. Ripple Vase - Clear Base |
| _____ | 20. M - <u>N</u> Dark Oriental Poppy Tumbler | _____ | 42. M - Great 4 ³ / ₄ " Imp. Ripple, Little Squatty Vase, 4" Top & 2 ¹ / ₄ " Base |
| _____ | 21. W - <u>N</u> Grape Arbor Tumbler - A Beauty | _____ | 43. Pastel Powder Blue - <u>N</u> 10 ¹ / ₄ " Tree Trunk Vase - Rare |
| _____ | 22. P - <u>N</u> Acorn Burrs Tumbler - Multi Elec. | | |

44. **Smoke? Horehound - N 9 1/4" Tree Trunk Vase - Rare Base Color**
45. **G - 10 3/4" N Tree Trunk Vase - Beautiful Example**
46. **M - 10 5/8" N Tree Trunk Vase - Rich Yellow, Pink, Blue**
47. **P - 9 1/2" N Tree Trunk Vase**
48. **Lav. - 10 1/2" N Dia. Points Vase - Very Scarce**
49. **P - 10" N Dia. Points Vase**
50. **G - 10 1/4" N Leaf Column Vase - Scarce & Nice**
51. **Scarce N B - Peacock at Fountain Pitcher & 4 Tumblers - Northwood Blue**
52. **P - N Raspberry 7 pc. Water Set**
53. **G - N Grape & Cable 7 pc. Water Set - Above Avg.**
54. **M - N Grape & Cable Pedestal Sherbets - 4 x &**
55. **Dark M - N Grape & Cable Cream Pitcher**
56. **Extra Nice P - Grape & Cable Hatpin Holder**
57. **P - N Grape & Cable Mid-Size Punch Bowl Base "Only"**
58. **Rich M - 10 1/2" ICS, Ball Ftd., Stag & Holly Bowl**
59. **Dark B - 10" ICS, Ball Ftd., Chrysanthemum Windmill Bowl - WOW!!**
60. **M - Round 9" Butterfly & Berry Ftd. Master Bowl**
61. **M - 8-Ruffle Fenton Holly Bowl**
62. **Scarce Clambroth - 8 1/2" ICS Fenton Holly Bowl**
63. **A - 8-Ruffle Fenton Holly Bowl - Beautiful Example**
64. **Rich M - 9 1/4" ICS Ball Ftd. Two Flowers Bowl - Super**
65. **A - 8 1/4" CRE Fenton Thistle Bowl**
66. **M - 8 3/4", 3 in 1 Fenton Thistle Bowl - Scarce Shape**
67. **A - 7 1/4" Ruffle Spt. Ftd. Stag & Holly Bowl**
68. **M - 8" CRE Ribbon Tie Bowl - Neat Shape**
69. **B - 10", 6-Ruffle Persian Med. Bowl**
70. **Dark M - 9" Ruffled N Strawberry Bowl - BW Ext.**
71. **Dark M - 9" Ruffled N Three-Fruits Bowl - BW Ext.**
72. **M - 4 3/4" Round Butterfly & Berry Little Ftd. Bowl**
73. **Rare N B - Double Loop Creamer**
74. **Rev. Amberina Red - 2-Row O.E. Basket - 2-Up**
75. **Red - Vintage Fenton Fernery Bowl - Scarce**
76. **A - N Dandelion Mug - Stippled**
77. **P - N Singing Bird Mug**
78. **A - N Beaded Cable Rose Bowl**
79. **M - N Fine Cut & Roses Rose Bowl**
80. **Rich Amber - 9", 8-Ruffle Fenton Vintage Bowl - Scarce Base Color, Some Say Brown**
81. **Extra Nice A - 10", 6-Ruffle Ten Mums Bowl**
82. **Above Avg. A - 8", 8-Ruffle Peacock & Grape Bowl - Collar Base - Great Example**
83. **G - 8", 8-Ruffle Peacock & Grape Bowl - Collar Base**
84. **G - 8 1/2" N 8-Ruffle Grape & Cable Bowl - BW Ext.**
85. **G - 7 1/2" Ball Ftd., 8-Ruffle Horse Med. Bowl - Very Scarce - Hot Pattern**
86. **G - 7 1/2" ICS Ball Ftd. Horse Med. Bowl**
87. **Super B - 9", 8-Ruffle Peacock & Grape Bowl w/Collar Base - Great Example**
88. **Scarce B - N Spt. Ftd. Sunflower Bowl**
89. **A - 9 1/4", 8-Ruffle Spt. Ftd. Sunflower Bowl**
90. **M - 9", 8-Ruffle Spt. Ftd. Sunflower Bowl**
91. **PM - 9" Sunflower Spt. Ftd. Bowl**
92. **B - 9 3/4" PCE Collar Base Wishbone Bowl - Super Elec. Irid. - See Photo**
93. **Rare G - Ftd. N Wishbone Plate - Few Known**
94. **M - 8-Ruffle Ftd. N Wishbone Bowl**
95. **G - 9 1/4", 8-Ruffle N Collar Base Wishbone Bowl - Near Emerald**
96. **G - N 8-Ruffle Ball Ftd. Wishbone Bowl - Extra Nice Example**
97. **B - Spt. Ftd. 8-Ruffle Dragon & Lotus Bowl**
98. **Lg. B - Ruffled CRE Persian Med. Compote**
99. **P - Imp. 7 3/4" Round Acanthus Bowl - Fantastic Irid.**
100. **Lav. - Ruffled Radium Imp. Scroll Embossed Compote**
101. **G - N 9" Three-Fruits Plate - BW Ext. - Above Avg.**
102. **A - N 9" Three-Fruits Plate - BW Ext. - Above Avg.**
103. **Spectacular G - 9 1/2", 4-Flowers V.T. Plate - Super**
104. **Dk. M - 8-Ruffle N Peacocks Bowl - Rib Back - Pumpkin - Old Favorite**
105. **G - Mlbg. 7 1/2", 6-Ruffle Blackberry Wreath Bowl - Satin**
106. **A - Mlbg. 5 1/2" ICE Blackberry Wreath Bowl - Super Radium**
107. **A - Mlbg. 10", 6-Ruffle Holly Whirl Bowl - Super Satin**
108. **G - Mlbg. 10", 6-Ruffle Holly Whirl Bowl - Satin**
109. **A - Mlbg. 10", 6-Ruffle Whirling Leaves Bowl - Extra Nice Satin**
110. **G - Mlbg. 8 3/4", 3 in 1 Blackberry Wreath Bowl - Neat Satin Shape**
111. **A - Mlbg. 10", 6-Ruffle Rays & Ribbons Bowl - Outstanding Satin**
112. **A - Fenton 9 1/2", 3 in 1 Little Flowers Bowl - Scarce Shape**
113. **G - 10 1/2", 6-Ruffle Little Flowers Bowl**
114. **M - 10 1/2" Persian Garden Fruit Bowl**
115. **M - 9" 10-Ruffle Garden Path VT. Bowl**
116. **B - 8 1/2", 3 in 1 Heart & Vine Bowl**
117. **G - 8 1/2", 3 in 1 Heart & Vine Bowl**
118. **A - 10", 3 in 1 Feathered Serpent Bowl - Scarce & Nice**
119. **Aqua - 9 1/4", 8-Ruffle Fenton Thistle Bowl - Rare Beauty**
120. **A - 9 1/4", 6-Ruffle Fenton Thistle Bowl - Beautiful Ex.**
121. **M - 9 1/4", 6-Ruffle Fenton Thistle Bowl - Nice**
122. **B - 9 1/4", 6-Ruffle Fenton Thistle Bowl - Nice**
123. **Powder B - 5 1/2", 6-Ruffle, 2-Row OE Basket**
124. **Powder B - 6 1/2", 6-Ruffle, 2-Row OE Blackberry Basket - Scarce**
125. **Celeste B - 5 1/4" ICS 2-Row OE Bowl - Really Neat - Rare Size - Little Sweetie**
126. **Super Celeste B - 8 1/4", 3-Row OE Bowl - 2-Up w/Silverplate Base**
127. **W - N 7-sided Bushel Basket - Frosty**
128. **Lav. Smoke? - Horehound Pastel N Round Bushel Basket**
129. **A.O. - N Round Bushel Basket - Soft Opal**
130. **B - N Round Bushel Basket - Always Desirable**
131. **M - N Round Bushel Basket - Extra Nice**
132. **Scarce N B - 7 1/2" Ruffled Fruits & Flowers Bowl - Multi Elec.**
133. **B - 8 3/4" Embroidered Mums Bowl - Elec. Hi-Lites**
134. **G - 9", 8-Ruffle Orange Tree Bowl - Very Scarce Color**
135. **G - 9", 6-Ruffle Orange Tree Bowl w/Trunk Center - WOW!!**
136. **B - 9", 6-Ruffle Orange Tree Bowl w/Trunk Center - Scarce**
137. **Powder B - 9", 8-Ruffle Orange Tree Bowl - Scarce Color**
138. **Deep B - N Ruffled Good Luck Bowl - Multi Elec.**
139. **P - N Ruffled Good Luck Bowl - Multi Elec.**
140. **Pumpkin M - N Ruffled Good Luck Bowl - Lot of Pink**
141. **Scarce G - VT. 8-Ruffle Good Luck Bowl - BW Ext.**
142. **M - Mlbg. Hobnail Swirl Cuspidor - Very Scarce**
143. **Pastel A.O. - N Fruits & Flowers Bon Bon - Lots of Opal**
144. **B - 9 1/4" Captive Rose Plate - Very Pretty Example**
145. **M - 9 1/4" Captive Rose Plate - Very Pretty Example**
146. **A - 9 1/4" Captive Rose Plate - Very Pretty Example**
147. **B.O. - Non-Irid. 8 1/2" N Peacocks Bowl**
148. **9 1/4" Fenton Three-Fruits Plate - Great Ex. - No Wear**



149. W - Collar Base - Ruffled, Stippled N 3-Fruits Bowl - Great One
150. W - Great Example, 9", 10-Ruffle Double Stem Rose Bowl
151. W - Great Example, Rose Spray JIP Compote
152. W - Great Example, 9/4" Fenton, 6-Ruffle Holly Bowl - A Dandy
153. W - Great Example, N Hearts & Flowers Ruffled Rib Back Bowl - Multi Color
154. W - Great Example, 9/4", 3 in 1 Low Crimp Apple Blossom Twigs Bowl
155. W - Great Example, 9/4" Low Ruffle Fanciful Bowl - Super
156. W - Great Example, 10 1/2", 8-Ruffle Cosmos & Cane Ext. Bowl - The Best - Super Irid.
157. W - Great Example, Brocaded Summer Gardens Ice Bucket - Hot Merchandise
158. W - Great Example, Brocaded Summer Gardens Compote/Plate - Hot Item
159. Rich I.B. - PCE Nippon Bowl w/Rib Ext. - Lots of Irid. - Great Color
160. M- Grape & Cable Cologne Bottle w/Stopper - Extra Nice
161. M - Grape & Cable Cologne Bottle w/Stopper - Crack Stopper
162. PM - Grape & Cable Dresser Tray - Super Pinks & Blues
163. M - N Grape & Cable Hatpin Holder - Feet OK
164. Deep P - 7" CRE Ruffled Bells & Beads Dugan Bowl - Multi Elec.
165. Elec. Blue on P - N 9" Peacock at Fountain Master Berry Bowl - WOW (See Photo)
166. A - 10 1/2" Hobnail Swirl Vase
167. RARE B - 7 1/2" Curved Star Vase - MAYBE 1 OF 2 KNOWN - Super Radium
168. B - 7 1/2" RARE Rose Garden Pillow Vase - See Photo
169. M - Unknown Pattern Vases - 9 1/8" Tall - Choice A or B - See Photo
170. M - Unknown Pattern Vase - 9 1/2" Tall - Possibly One of A Kind
171. Great M - 8 1/4" Radium Vase - Rising Comet - Rare
172. Rare M - 10 1/4" Pedestal Vase - Starburst - Rare Shape
173. M - 7 1/4" Sunflower & Dia. Cylinder Vase - Super Radium
174. PM - European 3" Tall Vase - 4 1/4" Ruffle Top - 2 1/4" Base - Pattern??
175. PO - 7 1/2" Dugan Freehand Pinched Swirl Vase
176. Yellow Amber - 9 1/2" JIP Corinth Vase
177. M - 9 1/4" Dugan Big Basketweave Vase
178. P - 10 1/4" Dugan Big Basketweave Vase
179. PM - 12 1/4" N Plunger Base, Mid-Size, Tree Trunk Vase
180. Deep B - 7" Dia. & Bows Vase - Detailed Pattern
181. Rare M - 12 1/2" Fenton Bullseye & Beads or Peacock Eye Vase
182. Clear - Beautifully Irid, 8 1/8" Imp. Ripple Vase
183. Beautiful G - 10 3/4" Boggy Bayou Vase - Scarce Color
184. M - Squatty 5 1/2" Boggy Bayou Vase - 4 1/2" Top & 3 3/8" Base
185. P - Imp. Iron Cross, 5 1/4" Stretch Vase - 6" Ruffled Top
186. PO - Squatty 4 1/4" Dugan Wide Rib Vase, 5 3/4" Top, 3 3/4" Base
187. RED - Fenton 10 1/2" Fine Rib Vase - Very Scarce
188. Beautiful G - 6 1/2" N Squatty Wide Rib Vase - 5 1/4" Top
189. I.B. - N 7" Wide Rib Vase - 4 1/2" Top, 3 1/2" Base - RARE
190. Scarce N Blue - 13 1/2" Wide Rib Funeral Vase - 4 3/4" Base
191. P - 8 1/2" Dugan Lattice & Point Vase - Daisy Int. - Super Irid.
192. Scarce Blue - N 8 1/2" Drapery VT. Vase
193. P - 8 1/4" Lined Lattice Vase
194. Rare Powder B - 5 1/2" JIP Fenton Fine Rib Footed Vase
195. Saph. - N 10 1/8" Fine Rib Vase - Very, Very Scarce
196. P - 10" N Fine Rib Vase - Choice A or B - Very Nice
197. Stretch - 7 1/2" Plate 471 Vase - 6" Top and 3 1/2" Base
198. B - 15" Mlbg. Hobnail VT. Vase - Rustic if you prefer!!
199. M - Rustic 21 1/4" Funeral Vases - A or B - I would want the pair.
200. Clear - M - Overlay - Smooth Panel Funeral Vase - 12" Tall, 10" Top, 5 1/4" Base
- 200A. Blue - 19 1/4" Plunger Base - Fantastic Rustic Funeral Vase - Big Bouncing Boy - WOW!
201. M - Twins Fruit Bowl w/Base
202. M - Headdress & Curved Star Open Sugar Bowl
203. M - 7 1/2" Ruffled Imp. Star & File Compote
204. M - Curved Star Celery Vase
205. Dk. M - 7 1/2" Dia., Round, Cherry Circles, 2 Hdl. Bowl
206. G - N 9", 8-Ruffle Grape Leaves Bowl - Rainbow of Irid.
207. G - PCE, N Three-Fruits Basketweave Bowl - Ex. Nice
208. G - N, PCE, Grape & Cable VT. Smooth Back Bowl - Ex. Nice
209. Deep B - Collarbase, 7 1/4" Round, Peacock & Grape Nut Bowl - Multi Elec.
210. M - Grape & Cable Punch Cups - 2 for 1 Money - 1 Cracked
211. M - N Memphis Punch Cups - 2 x \$
212. P.O. - 6 3/8" Four Flowers Plate - Smooth Ext. - Dandy
- 212A. G - N Rayed Leaf & Beads Rose Bowl
213. Dk. M - 9 1/4" Spector's Dept. Store Adv. Plate w/Hearts & Vines - Hot Item
214. P - 8 3/4" N Good Luck VT. Plate - BW Ext. - Scarce - Nice Irid. - Above Average
215. P - Dugan 8 1/4", 10-Ruffle Apple Blossom Twigs Bowl - Super Multi Elec.
216. PM - 10" Acanthus Plate - Inks, Blues, Yellows
217. M - 9 1/2" Collar Base Peacock & Grape Plate - Scarce
218. Super PM - 9 3/8" Fenton Peacock at Urn Plate
219. M - Mlbg. 7", 2-Sides Up, Holly Whirl Bon Bon w/Isaac Benesch 54th Anniv.
220. P - 8 1/2", Spt. Ftd. Three-Fruit Med. Bowl - Elec. Blues & Purples
221. P - 6 1/4", 8-Ruffle Scroll Embossed Bowl w/Hobstar & Tassel - Rare Ext.
222. PM - 6 1/4" Lattice & Points Ruffled Bowl - Daisy Int.
223. Lav. Smoke Base - 6", 6-Ruffle Blackberry Spray Bowl
224. P - 7" CRE, Multi-Elec., Fishscale & Beads Plate
225. P - 5 3/4" CRE, Multi-Elec., Fishscale & Beads Bowl
226. G - 15 1/2" Mlbg. Hobnail VT. Vase - 4 1/4" Base - Rustic??
227. M - 8" Parlor Panels Vase - 5 1/2" Top, 3 1/4" Base
228. M - Pumpkin - 7 1/4" N Drapery Vase - Buffed Toe
229. P.O. - 8 1/4", 10-Ruffle Apple Blossom Twigs Low Bowl
230. I.B. - N 7" Tri-Corner Drapery Candy Bowl
231. M - Fenton Horse Med. Ball Ftd. Nut Bowl - Hot Pattern
232. Vas - 5 3/4" Two Row OE Basket w/M-Overlay
233. A - 8 1/2", 6-Ruffle Fenton hearts & Vines Bowl
234. Vas - Fenton Holly JIP Hat w/CRE
235. M - 8 1/4" ICS Fenton Holly Bowl
236. M - 9 1/2" Fenton Holly Plate - Pumpkin Irid.

237. BA - Moiré Scarab Hatpins - A or B
 238. BA - Egyptian Butterfly Hatpin
 239. BA - Pattern?? - Faceted Swirl Hatpin
 240. BA - Six Plums Hat Pin
 241. BA - Dragonfly Hat Pin
 242. PO - Westmoreland Miniature Flower Basket 4 1/4" Bowl
 243. Super P - 4 1/2" Deep, Round Imp. Windmill Berry Bowl - Very Pretty
 244. Pastel AO - Stippled Dandelion Mug
 245. B - N Singing Birds Mug - Silver & Gold
 246. Super M - Stippled N Singing Birds Mug
 247. A - S - Repeat Whimsy Creamer from Punch Cup
 248. Aqua - Ball Ftd., 6", 6-Ruffle Little Fishes Bowl - Super Rarity
 249. Lav. Amberish - Rich 4 1/2", 6-Ruffle Kittens Bowl - Really Nice
 250. M - Kittens Cup - Dk. Radium
 251. Fantastic Elec. B - Lotus & Grape VT. Bon Bon
 252. M - Rare N Wildflower Compote - Plain Int. - "Absentee Blossom Time"
 253. Scarce A - 5 1/4" Tri-Corner Persian Med. Turned Up Plate
 254. RARE A - N 6", 6-Ruffle E.A. Hudson Furniture Adv. Bowl - Ex. Nice - Seldom Offered
 255. M - Aust. Butterflies & Bells Stemmed Salver - 12-Ruffle
 256. P - 5 1/4" Aust. Kangaroo, 12-Ruffle Nappy or Berry Bowl
 257. M - Imp. Tulip & Cane Goblet - Ex. Dk. - Pretty
 258. Beautiful PM - N Hearts & Flowers Compote - Pinks, Blues, Yellows
 259. M - 6 1/2" Persian Garden Plate w/BW Ext. - Gold & Pinks
 260. BA - Dugan Fan Breakfast Creamer
 261. A - N Fine Cut & Roses Rose Bowl - Unusual 2" Opening at Top
 262. Pumpkin M - N Puppies Pickle Dish - Hot Pattern
 263. Rare M - 6 1/4" ICS Fenton Lotus & Thistle Bowl
 264. B - 7", 6-Ruffle Fenton Peacock & Dahlia Bowl
 265. Very Scarce G - 9", 6-Ruffle Fenton Wild Blackberry Bowl
 266. Scarce G - 8 3/4", 3 in 1 Fenton Ragged Robin Bowl - Nice Item
 267. B - 9 1/4" N Poppy Show Plate - Multi Elec.
 268. IG - 9 1/4" N Poppy Show Plate - Rare Color, Golds, Silver, Pinks - Very Hard to Come By
 269. M - 9 1/4" N Poppy Show Plate - Lots of Pinks & Yellows
 270. P - 9 1/4" N Poppy Show Plate - Multi Elec. Blues, Purples, Golds (Way Above Average)
 271. Beautiful A - Ruffled Fenton 9" Holly Bowl
 272. Lav. Base - 9", 8-Ruffle Fenton Holly Bowl - Pinkish M - Irid. - Very Pretty
 273. Lav. Base - 9", 8-Ruffle Fenton Holly Bowl - Amber Tinted Look - Very Pretty
 274. B - 9 1/4", 3 in 1, Fenton Holly Bowl - Lot of Irid.
 275. Pastel M - 9 1/4", 3 in 1, Fenton Holly Bowl - Yellow & Gold Irid.
 276. Super Red - 9" Ruffled Collar Base Dragon & Lotus Bowl - Light Irid. Spotting - Manufacturing
 277. Scarce Lav. - 9" Ruffled Collar Base Dragon & Lotus Bowl
 278. Glowing Yellow Amber - 9" Ruffled Collar Base Dragon & Lotus Bowl
 279. G - 9" Ruffled Collar Base Dragon & Lotus Bowl - Elec. Beauty
 280. B - 9" Collar Base, Ruffled, Dragon & Lotus Bowl - Also A Beauty
 281. M - 8 3/4" Collar Base, Ruffled, Dragon & Lotus Bowl - Pumpkin Irid.
 282. Rare Aqua - 10 1/4" ICS, Ball Ftd., Stag & Holly Bowl - Very Pretty
 283. Amber - 10 1/4" ICS, Ball Ftd., Stag & Holly Bowl - Heat Flash in Marie - Still Rare Color
 284. Blue - 10 1/4" ICS, Ball Ftd., Stag & Holly Bowl - Radium Elec.
 285. M - 10 1/4" ICS, Ball Ftd., Stag & Holly Bowl - Pinks & Blues
 286. Beautiful M - 9 1/2" Ball Ftd., 8-Ruffle, Little Fishes Bowl - Pinks & Blues
 287. B - 10" Sq. 8-Ruffle Mikado Compote - Very Scarce
 288. PM - N Stretch 10 1/2" Cake Stand w/12-Sided Tree Bark Base
 289. M - Radium Elec. Twins Fruit Bowl & Base
 290. Super M - N Peacock at Fountain 8 pc. Punch Set - Great Example - Above Average
 291. M - Radium Elec. 14", 6-Ruffle Broken Arches Punch Bowl - Base & 5 Cups - A Dandy Set
 292. P - N Small G & C Punch Bowl & Base - Minor Damage
 293. Pumpkin M - Stippled N G & C Punch Bowl & Base + 6 Cups - Great Set
 294. Lav. Smoke - G & C Cracker Jar w/A-Lid
 294B. B - Rare N Stippled G & C VT. Plate - Rib Back
 295. Frosty IB - Rare G & C Cologne Bottle w/Stopper
 296. P - G & C Cologne Bottle w/Stopper
 297. Scarce A - 10 1/4" PCE, N, G & C Salad Bowl w/BW Ext.
 298. Great P - N G & C Oval Pin Tray
 299. M - Stipple G & C Powder Jar w/Plain G & C Lid
 300. G - G & C Candlestick - Chip on Base
 301. P - N, G & C Water Pitcher - Regular Size
 302. Smoke Lav. - 6" N, G & C Handgrip Plate
 303. Russet G - 10 1/4" Ball Ftd., N, G & C Fruit Bowl - Beautiful Multi Elec.
 304. Rare Em. G - Stippled G & C Banded Banana Bowl
 305. Rich M - Grapes & Cable Banana Bowl - Loaded w/Pinks
 306. Outstanding G - G & C Banana Bowl - Greens, Yellows, Blues
 307. Rare B - N 10 1/4" Ball Ftd. G & C Fruit Bowl - Multi Elec.
 308. A - 10" N Ball Ftd. G & C Fruit Bowl - Beautiful Ex.
 309. P - 10 1/4" Collar Base, 8-Ruffle, N, G & C Bowl - Super Purple, Yellow, Green
 310. P - N, G & C Sweetmeat Compote w/Lid - Super Ex.
 311. P - Imp. Grape Elec. Carafe or 8" Vase
 312. AO - 9", 8-Ruffle, N Peacocks Bowl - Lots of Opal
 313. Rare IB - PCE, N Peacocks Bowl - Seldom Seen!!
 314. Pastel IB - N Hearts & Flowers Rib Back Bowl - Blues, Pinks, Gold
 315. Pumpkin M - PCE Hearts & Flowers Rib Back Bowl
 315A. P - N Ruffled Hearts & Flowers Bowl - Gold, Blues, Purple
 316. Beautiful IG - 8-Ruffle N Hearts & Flowers Bowl - Blues, Yellows - Great Find
 317. W - 9" N Rose Show Plate - Pinks, Blues, Yellows
 318. M - N Radium 7-Sided Bushel Basket - Super Pretty
 319. P - N 9" Three-Fruits Plate - BW Ext. - Above Avg.
 320. P - 8 3/4", 8-Ruffle Fantastic Imp. Star of David Bowl
 321. Rare M - 9 1/4" Fenton Concord Plate
 322. A - 9 1/4" Fenton Concord Plate - Very Scarce - Nice Example - Very Hard to Come By
 322A. Violet - Imp. Grape Carafe - Beautiful Multi Elec.



323. A - 9¼" Mlbg. ICS, Lg. Mold, Peacock & Urn Bowl
 324. A - 5¼" Mlbg. ICS, Sm. Mold, Peacock & Urn Bowls - A-B-C
 325. PM - 10" ICS, N, Stipple All Over, Peacock at Urn Master Bowl - Ground Marie
 326. Lav. A - 6¼" Mlbg., Sm Mold, Peacock & Urn Plate - Scarce - Above Average Irid.
 327. B - N 5¼" ICS Elec. Peacock & Urn Bowl
 328. G - 6¼" Round Pine Cone, Flat, Plate - Nice
 329. PO - 6½" Four Flowers Smooth Back Plate
 330. M - Flat 6½" Imp. Grape Plate
 331. Lime - 6½" Imp. Grape Plate - Silver Irid - Base Glows
 332. Beautiful Reverse Amberina - Ruffled Hat Shape
 333. Amberina - Ruffled Fenton Holly Hat - Cherry Red Top
 334. Beautiful Aqua - 7½", 8-Ruffle, Sq. Shape, Fenton Acorn Bowl
 335. Pastel Lav. - 8¼" PCE, N, Strawberry Bowl - Smooth Back - WOW!! - Rare Look
 336. Ultra Rare Saph. - 5" N Peach Berry Bowl - Blue, Pink Overlay
 337. Moonstone - 6" CRE, Ruffled, Fern Panels Hat Shape Bowl - RARE
 338. B - Orange Tree Hat Pin Holder - Always in Demand
 339. Red Amy - 8¼", 6-Ruffle Fenton Pony Bowl
 340. RARE Saph. - COLLAR BASE Coin Dot Fenton Rose Bowl - 1 of How Many?
 341. Pumpkin M - N Wild Rose Nut Bowl - A Beauty
 342. PO - Nautilus Creamer
 343. Topaz Vas. - Concave Dia. Tumbler
 344. Celeste B - Concave Dia. Tumbler - Choice of 6
 345. P - N Acorn Burrs Tumbler - Choice of 4
 346. B - Ftd. Orange Tree Tumbler - Choice of 6
 347. Smoke - Soda Gold Tumbler - Choice of 3
 348. B - Butterfly & Fern Tumbler Vt. - Radium
 349. G - Butterfly & Fern Tumbler Vt. - Super, Fact. Ground Base
 350. G - Mlbg. Maryland Tumbler - Choice of 2
 351. A - Mlbg. Maryland Tumbler
 352. M - Mlbg. Maryland Tumbler
 353. M - Crab Claw Tumbler - Super
 354. P - Imp. Open Rose Tumbler - Multi Elec.
 355. G - Paneled Dandelion Tumbler
 356. A - Paneled Dandelion Tumbler - Choice of 3
 357. B - Butterfly & Fern Tumbler - Fact. Ground Base
 358. M - Fenton Waterlily & Cattail Tumbler
 359. M - Unshod Tumbler - Choice of 5
 360. M - Imp. Lustre Rose Tumbler - Choice of 3
 361. M - Imp. Grape Tumbler - Chip on Lip
 362. M - Star Med. Goblet
 363. M - Sailboats Goblet
 364. Celeste B - 8½" Florentine Candlesticks - Pr.
 365. Celeste B - 10½" Florentine Candlesticks - Pr.
 366. Lime Vase. - 10½" Florentine Candlesticks - Single
 367. RARE M - 10½" Pr. Cut Oval Candlesticks
 368. Smoke - 7" Imp. ?? Candlesticks w/6-Sides
 369. Smoke - Lg. Daisy Hdl. Basket - Imp. - Rare Beauty
 369A. G - 9" Lg. 8-Ruffle Lotus & Grape Bowl
 370. Beautiful A - 8¼" Ruffled Concord Bowl
 371. Beautiful M - 8¾" Ruffled Concord Bowl
 372. Extra Nice A - 8¾" Ruffled Nippon Bowl - Bw Ext.
 373. A - N PCE Strawberry Bowl - BW Ext. - Striking Example
 374. P - 8¾" N Ruffle Greek Key Bowl - Multi Irid.
 375. Near Emerald G - 9" N Ruffled Grape Leaves Bowl
 376. PM - Stretch - 7¼" Flared Bowl w/Iron Cross Mark
 377. Beautiful Smoke - 8¼" Rd. Flared Imp. Hattie Bowl
 378. Beautiful M - 10" Acanthus Plate - Blues & Pinks
 379. P - 9" Low Ruffle Imp. Grape Bowl - Super Elec.
 380. A - 9¼", 8-Ruffle Imp. Pansy Bowl - Radium Elec.
 381. Great M - 9", 8-Ruffle Imp. Cobblestone Bowl - Radium Blues & Pinks
 382. P - 8¼" Imp. Heavy Grape Plate
 383. P - 9", 10-Ruffle Dugan Flowers & Frames bowl - Stretch Elec.
 384. P - 8¾" Dugan 10-Ruffle Raindrops Bowl - Very Scarce Color
 385. M - 8¼", 10-Ruffle Apple Blossom Twigs Low Bowl
 386. Smoky A ?? - 9" Dugan Double Stem Roses Bowl - Pretty Pastel
 387. PO - 7" CRE Honeycomb Plate
 388. G - 9" Spt. Ftd. Fenton Grape & Cable Plate - Very Pretty
 389. A - Birds & Cherries Compote - Detailed
 390. Scarce A - Fenton Vintage Card Tray Bon Bon
 391. Cobalt B - 7", 6-Ruffle Peacock Tail Bowl - Dandy
 392. M - CRE Ruffled Captive Rose Compote
 393. G - 9", 6-Ruffle Captive Rose Bowl
 394. B - Captive Rose, 4-Up, Bon Bon
 395. M - Captive Rose, 4-Up, Bon Bon
 396. PO - Ftd. Dugan Cherries, 10-Ruffle Bowl - Enamel Floral Int. - Under Valued Item
 397. B - 9", 8-Ruffle Feather Stitch Bowl - Great Example
 398. G - 9", 6-Ruffle Ribbon Tie Bowl - Greens, Blues, Pinks
 399. B - 9", 3 in 1, Ribbon Tie Bowl - Very Pretty
 400. Rare M - Westmoreland 9" Dogwood Bowl
 401. M - Fenton, 3 in 1 Fenton Peacock at Urn Bowl - Scarce Shape
 402. A - N David & Bows Ruffled Bowl
 403. M - 12" Parlor Panels Vase - Radium Pumpkin
 404. M - 11½" Fenton Dia. Rib Vase - Extra Nice
 405. A - 12" Fenton Dia. Rib Vase
 406. G - 11¼" Fenton Dia. Rib Vase - Super Pretty
 407. PM - 4¼" Squatty Smooth Panel Vase - 4¼" Top, 2½" Bottom
 408. Clear Irid. - 8½" Smooth Panel Vase - 5½" Top, 3½" Base - Iron Cross Mark
 409. M - 6" Squatty N Feathers Vase - 5" Top, 3½" Base - Toughy!!
 410. M - 12½" Plume Panel Vase
 411. B - 11¼" Plume Panel Vase - Very Nice
 412. B - 11¾" Plume Panel Vase - Extra Nice
 413. B - 11" Plume Panel Vase - A Beauty
 414. B - 12¼" Four Pillars Vase - Adv. Howard Furn. Co. on Base
 415. G - 12¼" Four Pillars Vase - Star Base
 416. M - 7" Butterfly & Berry Vase - 4½" CRE Top
 417. M - 4½" Mini Imp. Thin Rib & Drape Vase - Little Sweetie
 418. M - 4¼" Mini Imp. Thin Rib & Drape Vase - 4½" Top, 2½" Base
 419. M - 8½", 12-Panel Flute Vase?? w/Twist - 2" Top, 2½" Base
 420. M - Balloons Vase - Neat Vase
 421. M - Balloons Shape Vase w/Wheel Cut Designs - Etched Lustre
 422. Great Smoke - 12" Free Fold Vase - Radium Irid.
 423. M - 12" Free Fold Vase - Radium Irid.
 424. Clear Irid. - 8½" Serrated Flute Vase w/8Panels, w/6" Flared Top - Radium - Clambroth
 425. M - 10" Imp. Bullseye & Beads Vase
 426. Dk. M - 5¼" Morning Glory Bud Vase
 427. Dk. M - 5½" Morning Glory Bud Vase

428. Clear w/Clam Irid - 7 $\frac{1}{4}$ " Morning Glory Bud Vase
 429. Beautiful Clear Irid. - 7" Morning Glory Bud Vase
 430. G - 12" Beautiful Knotted Beads Vase
 431. G - 11 $\frac{1}{2}$ " Beautiful Knotted Beads Vase
 432. B - 10" Rustic Vase - Really Nice
 433. A - 11 $\frac{1}{2}$ " April Showers Vase
 434. G - 11" April Showers Vase
 435. Neat A - Squatty 5 $\frac{1}{2}$ " JIP Long Thumbprint Vase - 5 $\frac{1}{2}$ " Top, 3 $\frac{1}{2}$ " Base
 436. A - 11 $\frac{1}{4}$ " Long Thumbprint Vase
 437. M - 7", 2-Row OE Blackberry Bowl
 438. M - 5 $\frac{3}{4}$ " JIP, OE Basket
 439. M - 5 $\frac{3}{4}$ " 2-Up OE Basket
 440. B - 5 $\frac{3}{4}$ " JIP OE Basket
 441. B - 5 $\frac{3}{4}$ " 4-Up Blackberry Spray Basket
 442. B - 6", 4-Up Banded Blackberry Hat Shape
 443. G - Ruffle Iris Compote - Nice Example
 444. Beautiful Clear Irid - 7 $\frac{1}{2}$ " Ruffled Scroll Embossed Compote - Curve Star Ext.
 445. P - Dugan 7-Ruffle Leaf Rays Nappy
 446. M - Fenton CRE, Low Ruffled Compote - Neat Item
 447. M - Octagon Decanter - Stopper has crack, but there!!
 448. M - Octagon Wines - 4 times \$
 449. B - 6" Ruffled Pine Cone Bowl
 450. A - N 6", 6-Ruffle Rays Bowl
 451. G - Fenton Stippled Rays Card Tray Bon Bon
 452. M - Peacock Tail Compote
 453. A - Peacock Tail Compote
 454. M - Imp. Flute & Cane, Very, Very Scarce, Sherbet
 455. G - Blackberry Spray Compote
 456. M - Etched Deco Cream & Sugar - Neat Item
 457. M - Etched Deco Salver - 7 $\frac{1}{2}$ " Top - Neat Item
 458. M - 5" Etched Deco Candy w/Lid - Neat Item
 459. MMG - 7" Dia. Ftd. Floral Optic Rose Bowl - Great Find
 460. Scarce M - Split Diamond Jam Pot or Sugar
 461. M - 5" Rd. Little Flowers Berry Bowl
 462. M - 6 $\frac{1}{4}$ ", 6-Ruffle, N Wild Strawberry Bowl - Dandy Little Item
 463. Smoke - 6 $\frac{1}{4}$ " Rd. Star Spray Bowl
 464. M - 6 $\frac{1}{4}$ " Rd. Star Spray Bowl
 465. G - 6 $\frac{1}{2}$ " ICS Fenton Vintage Bowl - Scarce Size
 466. B - 6" ICS Fenton Vintage Bowl - Rare Size Also
 467. G - N Scarce Colonial Tulip High Footed Compote
 468. Horehound - N Beaded Cable Rose Bowl - RARE - Out of Rd. Top
 469. Smoke - 4 $\frac{1}{2}$ " Ruffled Plain Jane Berry Bowl
 470. M - Nu Art Stipple & Rib Shade
 471. M - August Flower Lamp Shade w/Chip
 472. Amber - 6 $\frac{3}{4}$ " Ruffled Stipple Ray & Scale Band Bowl
 473. P - N Ruffle Rainbow Compote
 474. P - N Ruffle Rainbow Compote w/BW Ext.
 475. M - Fine Cut Flower Compote
 476. W - Heisey Grids & Squares Tumbler - Crider Irid.
 477. M - Dia. & Fans Tumbler - Super - Crider Irid.
 478. W - Stars & Medallions Tumbler - Crider Irid.
 479. Celeste or Saph. - Diamonds Tumbler - Crider Irid.
 480. W - Ribbed Panels Tumbler - Crider Irid.
 481. Amber - Nearcut Inverted Strawberry Tumbler - Crider Irid.
 482. Cherry Red - Honeycomb Juice Glass - Sgn. Ronald Hansen - Very Pretty
 483. Red - Hobstar & Feather Panels Contemp. Tumbler
 484. IG - 1980 ACGA Beaded Shell Conv. Mug.
 485. Powder B - Diamonds & Bars Contemp. Tumbler
 486. Smoke - Mayflower Tumbler - Sgn. IG

487. M - Grape & Cable Tumbler - N in Circle - Repo
 488. Red - Grape & Cable Tumbler - J. St. C.
 489. Red - Grape & Cable Tumbler - J. St. C.
 490. Cobalt B - Grape & Cable Tumbler - J. St. C.
 491. Red - Contemp. Hollyband Tumbler
 492. Blue Violet - Contemp. Cactus Tumbler
 493. Red - FEZ Shot Glass - Sgn. Joe St. Clair, D. Wendt - Non Irid.
 494. Ice Pink - Sheaf of Wheat Toothpick Holder, Bob & Maude 1974
 495. M - Flashed - Late Waterlily Tumbler - Enameled
 496. PO - 5 $\frac{1}{4}$ " Rd. Fishscale & Beads Bowl
 497. A - Mlbg. 5 $\frac{1}{2}$ " Flared Peacock - No Bee - No Beading - Radium - Beautiful Bowl
 498. A - Old Near Cut Strawberry Tumbler - Rim Chip
 499. P - Fashion Tumbler - Base Chips
 500. A - Mlbg. Marilyn Tumbler - Base Damage
 501. M - Grape Arbor Tumbler - Base Chipped
 502. M - Octagon Tumbler - Bruise in Base
 503. M - N Cherry & Cable Tumbler - Rim Chip
 504. P - Springtime Tumbler - Base Bruise
 *505. Rare M - Buzz Saw & File Large Water Pitcher - 9 $\frac{3}{4}$ " Tall - Possible 1 of 3 Known
 *506. M - Flute & Cane Milk Pitcher - Very Scarce
 507. M - Buzz Saw & File Water Goblet - Also Scarce
 508. M - 474 Wine - Little Dandy
 509. M - Omnibus Tumbler - Rare Find - Base Roughness

 **THANK YOU FOR
ATTENDING THE AUCTION**

CARNIVAL GLASS AUCTIONS CALENDAR OF EVENTS

September 15 & 16, 2000

Mamie Bell Collection, WI
at Boonville, MO

Saturday, October 14, 2000

Wichita, KS - ACCGA

November 3 & 4, 2000

at Boonville, MO, Northern Estate

January 5 & 6, 2001

10th Anniversary New Year Extravaganza

For Free Color Catalogs & Information Write:

Mickey Reichel

516 Third Street, Boonville, MO 65233-1536

or Call: 660-882-5292 days or

660-882-5283 evenings



MICKEY REICHEL
ANTIQUÉ & AUCTION, L.C.
 516 THIRD STREET
 BOONVILLE, MO 65233-1536

PRESORTED
 FIRST CLASS MAIL
 US POSTAGE PAID
 SEDALIA, MO
 PERMIT 217

RETURN SERVICE REQUESTED

FIRST CLASS MAIL

SPECIAL INVITATION TO:

