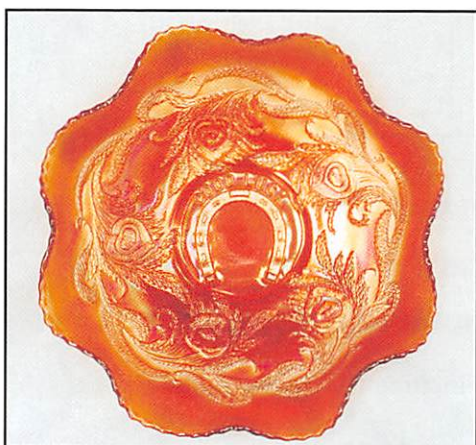


# BURNS

AUCTION SERVICE

## A.C.G.A. Convention Auction



**Friday, July 28, 2000**

**Preview: Late Thursday Evening  
& 7:00 A.M. Friday  
Auction: 9:00 A.M.**

*at the*

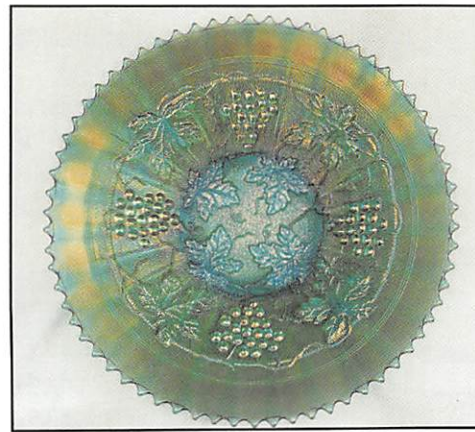
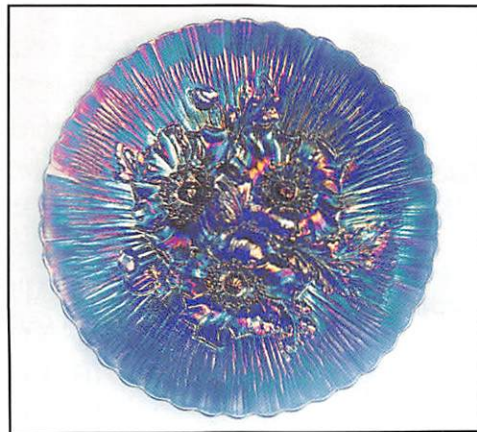
**Holiday Inn – Parkersburg**

Rt. 50 at I-77

Parkersburg, West Virginia • (304) 485-6200

Exit 176 off I-77

West Virginia Lic. No. 888



Boy... I'll tell ya! Summer just seems to be passing us by... Pretty soon we'll be warming up our heaters again.

But before we start with the winter blues, we've got a bit more business to do. This particular business is called the American Carnival Glass Association Convention Auction.

This year's selection of glass turned out to be one with a number of rarities and items with great color. A good selection of the glass is from the collection of Mr. & Mrs. Walter Gywnn from Syracuse, New York. They had been part of conventions and auctions for years, and with his passing, Mae has decided to part with the goods. A super auction I hope all will be able to attend.

The auction will be held in conjunction with the A.C.G.A. Convention; activities starting around Tuesday and ending with the banquet on Friday evening.

The Convention will be held at the Holiday Inn – Parkersburg, which is located just off Exit 176 of I-77. The motel is sold out for Friday evening but there is a Ramada Inn, a Days Inn, a Red Roof Inn and a Best Western located nearby. Call the 304 area code for their numbers or check your last A.C.G.A. newsletter for details.

Mail bids, fax bids, phone bids, etc. due by Tuesday, July 25, 2000.

### **CHECK OUT BURNS AUCTION SERVICE ON THE WEB!**

Visit our new Web site for information on upcoming auctions, complete auction listings and photos of auction highlights.  
You can e-mail your bids or requests for information.

<http://zeus.kspress.com/woodsland/burnsauction> e-mail: [brnzauctsv@aol.com](mailto:brnzauctsv@aol.com)

## **BURNS AUCTION SERVICE**

Tom Burns  
P.O. Box 608  
Bath, New York 14810  
(607) 776-7942

Bill Richards  
44 Water St., Poland, OH 44514  
(330) 757-2001  
FAX (330) 757-4917

Bill Richards, III  
2253 Country Lane  
Poland, OH 44514  
(330) 755-2620

### **Mail Bids honored under the following conditions.**

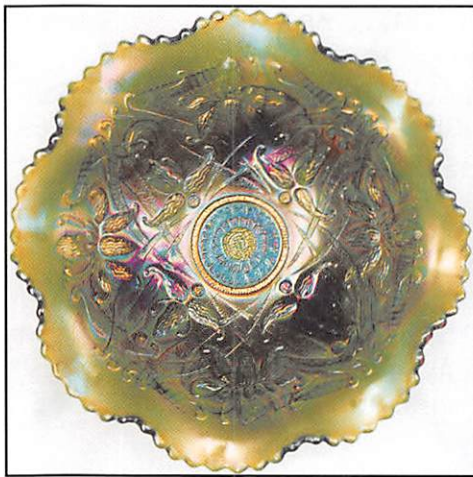
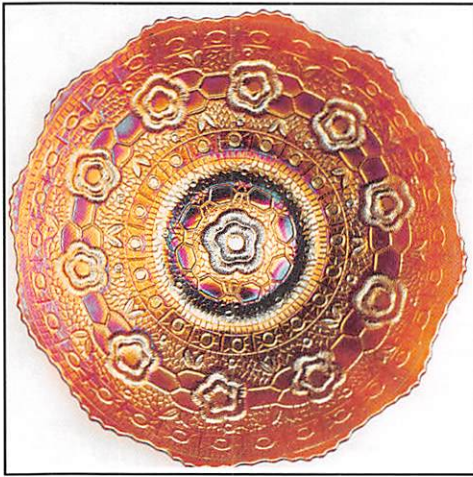
1. No deposit required, Bidders will take full responsibility to honor any and all bids we execute for them. Payment in full plus postage and handling required after notification and before we ship any item to them.
2. Items are bid on in perfect condition with average or above average iridescence OR as listed in the brochures.  
Bids will not be carried out when damage on an item has been found during the auction. **PEOPLE PRESENT AT AUCTION ARE RESPONSIBLE FOR FINDING ANY PINHEADS, WEAR, SPOTTINESS, MANUFACTURER'S DEFECTS OR ANY OTHER MINOR FLAWS, ETC.**
3. Successful bidders will be notified by collect call from the auctioneer (**so be sure to include the phone number**).
4. Phone inquiries about the glass or any other questions are welcome.
5. If you have some other person at the auction bidding for you, they must pay for the item before taking it.
6. Any terms or conditions given the day of the auction will supersede any previously published information.
7. Mail, e-mail, fax and phone bids are due by Tuesday, July 25, 2000.

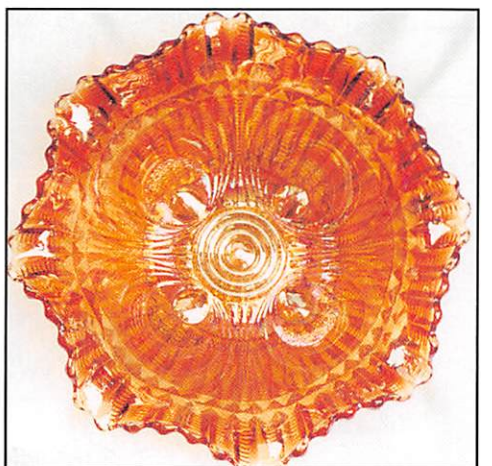
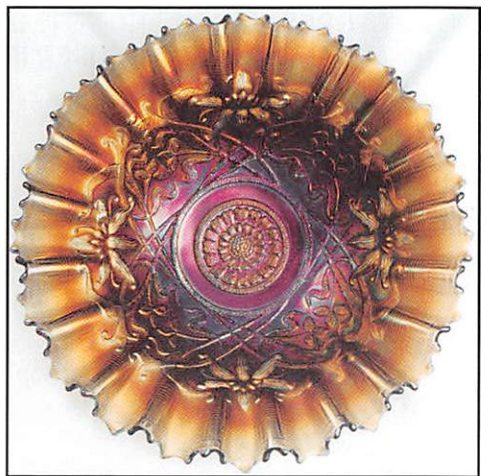
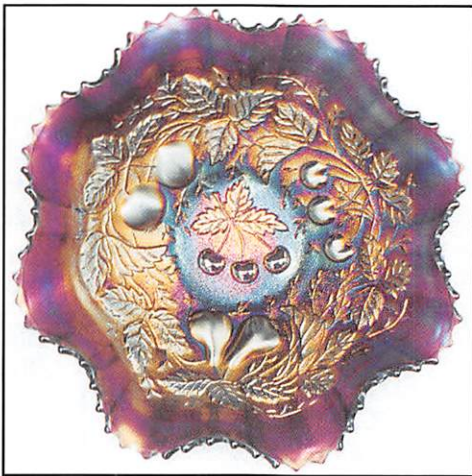
- |   |   |
|---|---|
| ___ 1. Fenton Pastel Swan Master Salt – Pink  | ___ 13. Fenton G & C Small Size Ftd. Fruit Bowl w/ Straight Up Sides – Mari. (scarce shape; nice dark color)                          |
| ___ 2. "Souvenir of Brooklyn, N.Y." Squatty Spittoon Shaped Novelty – Lt. Mari.   | ___ 14. Unlisted Sowerby Geometric Patterned Low Ruffled Stemmed Compote – Dk. Mari. (signed Sowerby; has a long oval pattern)        |
| ___ 3. (6) 4" Tall Stemmed Juice Glasses – Mari.  | ___ 15. Fenton (?) Bulbous Water Pitcher Mold Blank Spittoon Whimsey – Lt. Mari. (rare item; has a couple manuf. stones in the glass) |
| ___ 4. N Acorn Burr Handled Punch Cup – Green   | ___ 16. 10" Tall Fenton Cut Ovals Single Candlestick – Mari. (scarce item in a scarce size)   |
| ___ 5. (2) Dugan Many Fruits Handled Punch Cups – Blue (scarce color; selling choice)   | ___ 17. Fenton 2 Row Open Edge Basketweave 6 Ruffled Hat – Red (very scarce; nice color and irid.)                                    |
| ___ 6. N Wide Panel Center Epergne Lily Only – Mari. (scarce part; fitter end has long flake)                                       | ___ 18. Cambridge Inverted Strawberry Covered Powder Jar – Mari. (very scarce; lid has a small chip on the rim)                       |
| ___ 7. N G & C Table Set Creamer Only – Green (scarce; has flake on thumbprint)   | ___ 19. 5-1/2" M'burg Holly Sprig Sauce w/ Tight Crimped Edge – Mari. (rare; has satiny finish and rare shape)                        |
| ___ 8. Imperial Pansy Handled Breakfast Open Sugar – Lt. Amyth. (scarce; nice irid.)  | ___ 20. <b>10" M'BURG BERNHEIMER BROTHERS/ MANY STARS 6 RUFFLED BOWL – BLUE (RARE AND VERY DESIRABLE; HAS NICE SATINY FINISH)</b>     |
| ___ 9. Cambridge Inverted Strawberry Handled Open Spooner – Amyth. (very scarce item; sorta silvery irid.)                          |   |
| ___ 10. <b>N 8 SIDED HANDLED BUSHEL BASKET – ICE BLUE (RARE AND DESIRABLE; NICE COLOR AND INTERIOR IRID.)</b>                       |   |
| ___ 11. <b>N G &amp; C LG. RUFFLED BANDED/ STIPPLED FTD. FRUIT BOWL – RENNINGER BLUE (RARE BASE COLOR; HAS A BRONZE/ RED IRID.)</b> |   |
| ___ 12. 8-3/4" N G & C Variant Stippled Bowl w/ P.C.E. and Ribbed Ext. – Blue (very scarce; part of surface is silvery)             |   |

- \_\_\_ 21. 10-1/2" M'BURG BLACKBERRY WREATH LG. 6 RUFFLED BOWL – BLUE (RARE AND VERY DESIRABLE; HAS A REALLY NICE SATINY FINISH)
- \_\_\_ 22. 9-1/2" M'BURG BLACKBERRY WREATH LG. ICE CREAM SHAPED BOWL – BLUE (RARE AND VERY DESIRABLE; HAS A REALLY NICE SATINY FINISH)
- \_\_\_ 23. 9-1/4" M'burg Zig Zag Bowl w/ 3 in 1 Edge – Amyth. (very scarce; has a nice radium finish)
- \_\_\_ 24. 7" M'BURG STRAWBERRY WREATH ICE CREAM SHAPED BOWL – MARI./VASELINE (VERY RARE AND VERY DESIRABLE; NICE MARI. OVERLAY; MAY HAVE PINHEAD)
- \_\_\_ 25. 19" TALL X 5-1/4" BASE FENTON RUSTIC SWUNG FUNERAL VASE – BLUE (RARE AND DESIRABLE; GREAT IRID.; HAS PEELING ON EDGE)
- \_\_\_ 26. 18-1/4" TALL X 5" BASE FENTON RUSTIC SWUNG FUNERAL VASE – DK. MARI. (VERY SCARCE; HAS DARK COLOR W/ GREAT IRID.)
- \_\_\_ 27. 18-1/4" Tall x 5" Base Fenton Rustic Swung Funeral Vase – Odd Amyth. Swirl (damaged but very rare; missing point and cracked; rare color)
- \_\_\_ 28. 12" Tall Dugan Pulled Loop Standard Swung Vase – Blue (very scarce base color; nice irid.)
- \_\_\_ 29. 12-1/2" Tall x 4-3/4" Base N Tree Trunk Mid Size Swung Vase – Green (very scarce and desirable; has nice bright satiny irid.)
- \_\_\_ 30. N ROSE SHOW FLAT PLATE – DK. ICE GREEN (VERY RARE; VERY FLAT W/ GREAT IRID.; ONE OF THE BETTER EXAMPLES YOU'LL SEE)
- \_\_\_ 31. N ROSE SHOW VARIANT FLARED PLATE W/ RIBBED EXT. – RENNINGER BLUE (RARE AND VERY DESIRABLE; GREAT BLUE AND YELLOW HIGHLIGHTS)
- \_\_\_ 32. N POPPY SHOW FLAT PLATE – ELEC. BLUE (RARE AND VERY DESIRABLE; BRIGHT BLUES AND REDS)
- \_\_\_ 33. N POPPY SHOW FLARED PLATE – ICE BLUE (RARE AND DESIRABLE; HAS YELLOW/ GOLD HIGHLIGHTS)
- \_\_\_ 34. N POPPY SHOW FLAT PLATE – DK. MARI. (VERY SCARCE AND VERY DESIRABLE; DK. MARI. W/ A REDDISH IRID.)
- \_\_\_ 35. N PEACOCKS STIPPLED PLATE W/ RIBBED EXT. – ELEC. BLUE (RARE AND DESIRABLE; NICE BLUE AND RED HIGHLIGHTS)
- \_\_\_ 36. N PEACOCKS PLATE W/ RIBBED EXT. – ICE BLUE (RARE AND DESIRABLE; NICE COLOR AND BRIGHT IRID.; HAS LONG BUBBLE ON EDGE)
- \_\_\_ 37. N THREE FRUITS STIPPLED PLATE W/ RIBBED EXT. – VIOLET W/ SWIRLS (NEAT ITEM; DK. PURPLE W/ SWIRLS; HAS BRIGHT BLUE, RED AND YELLOW IRID.)
- \_\_\_ 38. N GOOD LUCK FLARED PLATE W/ BASKETWEAVE EXT. – PURP. (ONE OF THE BETTER EXAMPLES; NICE BRIGHT EVEN IRID.; SCARCE)
- \_\_\_ 39. N Peacock at the Urn All Over Stippled Ind. Ice Cream Bowl – Blue/ Elec. Blue (scarce and desirable; matches master below)
- \_\_\_ 40. N PEACOCK AT THE URN ALL OVER STIPPLED LARGE ICE CREAM BOWL – BLUE/ ELEC. BLUE (RARE AND VERY DESIRABLE; SUPER EXAMPLE W/ BRIGHT MULTI-COLORED IRID.)
- \_\_\_ 41. N PEACOCK AT THE URN ALL OVER STIPPLED LARGE ICE CREAM BOWL – GINGER ALE OR HONEY AMBER (VERY RARE BASE COLOR; SOME PEOPLE CALL THIS SMOKE; NICE IRID.)
- \_\_\_ 42. N PEACOCK AT THE URN LARGE ICE CREAM BOWL – ICE GREEN (RARE AND VERY DESIRABLE; NICE BASE COLOR AND IRID.)
- \_\_\_ 43. N PEACOCK AT THE URN LARGE ICE CREAM BOWL – ICE BLUE (RARE AND VERY DESIRABLE; NICE BASE COLOR AND IRID.)
- \_\_\_ 44. N Peacock at the Urn Ind. Ice Cream Bowl – Ice Blue (very scarce; irid. a bit silvery)
- \_\_\_ 45. N PEACOCK AT THE URN LG. ICE CREAM BOWL – PURP. (VERY SCARCE; VERY NICE EXAMPLE; HAS BRIGHT MULTI-COLORED IRID.)
- \_\_\_ 46. N PEACOCK AT THE URN LG. ICE CREAM BOWL – DK. MARI. (VERY SCARCE; NICE DARK COLOR)
- \_\_\_ 47. N Peacock at the Urn Ind. Ice Cream Bowl – Mari. (nice average color)
- \_\_\_ 48. FENTON HOLLY STEMMED 6 RUFFLED COMPOTE – RED (A SUPER EXAMPLE; BRIGHT RED; ATTRACTIVE)
- \_\_\_ 49. FENTON VINTAGE GRAPE 2 HANDLED 4 SIDED BON BON – LT. P. OPAL. (HAVEN'T SEEN THIS ITEM BEFORE; LIGHT OPAL.)
- \_\_\_ 50. 7-1/2" FENTON ELKS 1914 B.P.O.E. PARKERSBURG PLATE – ELEC. BLUE (RARE AND VERY DESIRABLE; BRIGHT BLUE IRID.; SUPER)
- \_\_\_ 51. 9-1/4" Fenton Peacock at the Urn Flat Plate – Blue (very scarce and desirable; nice color and irid.)
- \_\_\_ 52. 9" Fenton Feather Stitch Very Low Bowl/ Plate – Blue (scarce shape in this color; could be a bit flatter)
- \_\_\_ 53. 9" Westmoreland Scales Low Flared Plate – Dk. P. Opal. (probably one of the better examples; super)
- \_\_\_ 54. N Oriental Poppy 7 Pc. Tankard Water Set – Amyth. (rare and desirable set; has odd tint; one tumbler damaged)

- \_\_\_ 55. 11" DUGAN GARDEN PATH VARIANT CHOP PLATE W/ SODA GOLD EXT. – LT. P. OPAL. (RARE AND VERY DESIRABLE; FLAT W/ NICE IRID. AND OPAL. JUST ON VERY EDGE)
- \_\_\_ 56. N ORIENTAL POPPY TUMBLER W/ RIBBED INT. – DK. ICE BLUE (RARE AND DESIRABLE; NICE DARK COLOR AND IRID.)
- \_\_\_ 57. N Peacock at the Fountain Tumbler – Ice Blue (rare and nice but has chip on base)
- \_\_\_ 58. **CAMBRIDGE DOUBLE STAR TUMBLER – AMYTH. (RARE BASE COLOR; TOUGH TO FIND)**
- \_\_\_ 59. Fenton Horsehead Medallion J.I.P. Ftd. Bowl – Mari. (nice color and shape; has a couple sharp points)
- \_\_\_ 60. **N G & C 2 PC. CANDLE LAMP – MARI. (RARE W/ A VERY DESIRABLE SHADE THAT FLARES OUT DIFFERENTLY; TOP OF STICK HAS MANUF. PEELING)**
- \_\_\_ 61. N Peacocks Flared Plate w/ Ribbed Ext. – Ice Green (very scarce w/ nice irid.; has open bubble between 2 points)
- \_\_\_ 62. Jeanette Butterfly Pin Tray – Aqua/ Mari. (scarce)
- \_\_\_ 63. European 2 Handled Miniature Salt Dip – Mari./ Gray Handles (unusual miniature item; scarce)
- \_\_\_ 64. 3" Tall Plain Juice Glass – Mari.
- \_\_\_ 65. **8-3/4" IMPERIAL EMBOSSED SCROLL LG. DEEP 8 RUFFLED BOWL W/ FILE EXT. – REDDENED AMBERINA (EXTREMELY RARE COLOR FOR THIS ITEM; SECOND I'VE SEEN; VERY DIFFERENT)**
- \_\_\_ 66. N G & C Breakfast Handled Creamer – Dk. Mari. (nice color and irid.)
- \_\_\_ 67. 3" Tall x 4-1/4-1/2" Dia. European Classical Arts Deep Round Nut Bowl – Mari./ Stained Decor. (rare and desirable; nice stain)
- \_\_\_ 68. 2-3/4" Tall x 4" Dia. European Star Geometric Patterned Flared Vase or Hat – Mari. (scarce)
- \_\_\_ 69. European Stevens & Williams Single Lily Epergne in Silver Plate Base – Mari./ Clear (scarce and desirable; unusual item)
- \_\_\_ 70. **9-3/4" N WISHBONE BOWL W/ P.C.E. AND BASKETWEAVE EXT. – SMOKE (VERY RARE COLOR FOR THIS ITEM; NICE)**
- \_\_\_ 71. **N THREE FRUITS STIPPLED BOWL W/ P.C.E. AND RIBBED EXT. – GREEN (RARE AND DESIRABLE; NICE COLOR AND IRID.; UNDERPRICED ITEM)**
- \_\_\_ 72. **9" FENTON HOLLY 8 RUFFLED BOWL – AQUA/ MARI. (VERY RARE AND BASE COLOR FOR THIS PATTERN; NICE!)**
- \_\_\_ 73. **9-1/4" FENTON HOLLY LOW BOWL W/ 3 IN 1 EDGE – GREEN (GREAT EXAMPLE; BRIGHT COLOR AND LOW SHAPE)**
- \_\_\_ 74. **9-1/4" EUROPEAN (OR DUGAN) PODS AND POSIES FLARED PLATE W/ MANUF. GROUND BASE – GREEN (A BEAUTY! BRIGHT COLOR AND IRID; NICE!)**
- \_\_\_ 75. **11-1/8" DUGAN FARMYARD BOWL W/ 3 IN 1 EDGE – PURP. (VERY RARE AND VERY DESIRABLE; MASSIVE ITEM W/ GREAT MULTI-COLORED IRID.; SUPER EXAMPLE; NICE)**
- \_\_\_ 76. **DUGAN paneled cherries ftd. 10 ruffled bowl – Purp. (super example w/ great irid.; really nice)**
- \_\_\_ 77. **9-3/4" M'BURG MANY STARS 6 RUFFLED BOWL – AMYTH. (RADIUM AND RARE; REALLY NICE IRID.)**
- \_\_\_ 78. 7-1/2" Imperial Sand and Shell Deep 8 Ruffled Bowl – Purp. (super color and irid.; nice example)
- \_\_\_ 79. **5-1/4" FENTON 2 ROW OPEN EDGE ICE CREAM SHAPED BOWL – ICE BLUE (SCARCE COLOR IN A SCARCE SHAPE; NICE)**
- \_\_\_ 80. **9" FENTON CONCORD GRAPE FLARED PLATE – AMYTH. (VERY RARE AND VERY DESIRABLE; GREAT COLOR; PINHEAD ON EDGE)**
- \_\_\_ 81. **9" FENTON PEACOCK AND GRAPE 8 RUFFLED BOWL – LIME GREEN OPAL. (RARE AND DESIRABLE; OPAL. ON EDGE W/ NICE IRID.)**
- \_\_\_ 82. N Peacocks Plate w/ Ribbed Ext. – Ice Green (very scarce; nice dark example)
- \_\_\_ 83. N Peacocks Plate w/ Ribbed Ext. – White (very scarce; nice irid. and detail)
- \_\_\_ 84. N Peacocks Ruffled Bowl w/ Ribbed Ext. – Amyth. (very scarce and desirable w/ nice irid.)
- \_\_\_ 85. **N HEARTS AND FLOWERS STEMMED RUFFLED COMPOTE AND RIBBED EXT. – AQUA OPAL. (EXCELLENT EXAMPLE W/ BRIGHT IRID.; REALLY NICE)**
- \_\_\_ 86. **N HEARTS AND FLOWERS STEMMED RUFFLED COMPOTE W/ RIBBED EXT. – ICE GREEN (VERY SCARCE; NICE YELLOW HIGHLIGHTS)**
- \_\_\_ 87. N Good Luck Bowl w/ P.C.E. and Basketweave Ext. – Green (very scarce; nice satiny color and irid.)
- \_\_\_ 88. 8-1/4" N Wishbone Ftd. Flared Plate w/ Ruffles and Rings Ext. – Amyth. (very scarce; nice satiny highlights)
- \_\_\_ 89. **N PEACOCKS RUFFLED BOWL W/ RIBBED EXT. – AQUA OPAL. (RARE AND DESIRABLE; NICE IRID.)**
- \_\_\_ 90. **N G & C VARIANT STIPPLED PLATE W/ RIBBED EXT. – SAPPHIRE (VERY RARE; GREAT BASE COLOR W/ SUPER IRID.; EXCELLENT EXAMPLE)**
- \_\_\_ 91. **N PEACOCK AT THE URN LG. ALL OVER STIPPLED ICE CREAM BOWL – BLUE (ANOTHER EXAMPLE OF THIS RARE ITEM; NICE IRID.)**
- \_\_\_ 92. 6-1/2" Imperial Grape Flat Plate – Amyth. (scarce w/ excellent irid.; nice)
- \_\_\_ 93. Fenton Lotus and Poinsettia Ftd. 6 Ruffled Sauce – Green (scarce; nice color and detail)

- \_\_\_\_ 94. 10" Fenton Chrysanthemum Windmill and Mums Lg. Ice Cream Shaped Ftd. Bowl – White (very rare item w/ average irid.; tough item to find)
- \_\_\_\_ **95. 8-9" TALL FENTON PEACOCK SUMMER GARDENS FLARED VASE – FRENCH OPAL./ STRETCH IRID. (EXTREMELY RARE ITEM; FIRST I'VE SEEN; NICE STRETCH IRID.)**
- \_\_\_\_ 96. Fenton Ten Mums Tumbler – Dk. Mari. (scarce; nice dark color and irid.)
- \_\_\_\_ 97. N G & C Tankard Tumbler – Mari. (scarce item)
- \_\_\_\_ 98. Imperial 474 Handled Punch Cup – Emerald Green (super example w/ great highlights)
- \_\_\_\_ 99. 8-3/4" Imperial Open Rose Flat Plate – Amber. (very scarce w/ excellent irid.; nice)
- \_\_\_\_ **100. IMPERIAL FASHION LG. ROSE BOWL – PURP. (RARE AND EXTREMELY DESIRABLE; SUPER EXTERIOR IRID. W/ NO INTERIOR IRID.)**
- \_\_\_\_ 101. 11-1/4" Tall Imperial Beaded Bullseye Swung Vase – Purp. (super example; great color and irid.)
- \_\_\_\_ 102. 12-1/2" Tall x 3-1/4" Base Imperial Ripple Swung Vase – Purp. (another excellent example; very nice)
- \_\_\_\_ 103. 4-3/4" Tall Imperial Miniature Morning Glory Swung Vase – Purp. (scarce; super example; great color)
- \_\_\_\_ 104. 7-1/2" Tall Imperial Miniature Morning Glory Swung Vase – Purp. (scarce; super example; nice)
- \_\_\_\_ **105. 13-1/2" TALL X 4-3/4" BASE X 8-3/4" FLARE IMPERIAL MORNING GLORY SWUNG FUNERAL VASE – PURP. (RARE AND VERY DESIRABLE; HAS SUPER RED AND BLUE HIGHLIGHTS; NICE EXAMPLE)**
- \_\_\_\_ 106. (3) Imperial Diamond and Sunburst Stemmed Wine Glasses – Purp. (scarce items; selling choice)
- \_\_\_\_ 107. 7-3/4" Imperial Embossed Scroll 8 Ruffled Bowl w/ File Ext. – Purp. (super example; nice color and irid.)
- \_\_\_\_ 108. 5-3/4" Imperial Embossed Scroll 8 Ruffled Sauce w/ File Ext. – Purp. (super color and irid.; really nice)
- \_\_\_\_ 109. 6-1/4" Imperial Grape Flat Plate – Purp. (scarce and very desirable; nice irid.)
- \_\_\_\_ **110. IMPERIAL GRAPE HANDLED WATER PITCHER – PURP. (RARE AND VERY DESIRABLE; SUPER, SUPER EXAMPLE)**
- \_\_\_\_ 111. Imperial Grape Water Carafe – Purp. (rare and desirable w/ super color and irid.)
- \_\_\_\_ 112. Imperial Grape Wine Decanter Only, No Stopper – Purp. (super example w/ great irid.)
- \_\_\_\_ 113. Imperial Diamond Lace 7 Pc. Water Set – Purp. (scarce set; selling tumblers separately)
- \_\_\_\_ 114. 8-3/4" Imperial Cobblestone Deep 8 Ruffled Bowl w/ Arcs Ext. – Purp. (very scarce; super example; great irid.)
- \_\_\_\_ **115. 5" TALL X 4-3/4" DIA. IMPERIAL OCTAGON STEMMED ROUND COMPOTE – PURP. (RARE AND VERY DESIRABLE; SUPER COLOR AND PERFECT)**
- \_\_\_\_ 116. 7-3/4" Imperial Crab Claw Deep Round Bowl – Purp. (rare color for this pattern; super example)
- \_\_\_\_ 117. (2) 4-1/2" Imperial Diamond Lace Round Flared Ind. Berry Bowls – Purp. (super examples; selling choice)
- \_\_\_\_ 118. 10-1/4" M'burg Rosiland Lg. 6 Ruffled Bowl – Amyth. (scarce; nice color; has chip and roughness around the base)
- \_\_\_\_ 119. 5-1/2" M'burg Blackberry Wreath Ind. Ice Cream Bowl – Amyth. (super radium example)
- \_\_\_\_ **120. FENTON "HEART AND HORSESHOE" GOOD LUCK 8 RUFFLED BOWL – MARI. (SUPER RARE EXAMPLE; GREAT COLOR AND IRID.; A VERY TOUGH ITEM; PERFECT!)**
- \_\_\_\_ **121. 6-1/2" FENTON SAILBOATS FLAT PLATE – MARI. (VERY SCARCE; HAS NICE SATINY FINISH AND DETAIL)**
- \_\_\_\_ 122. 8-1/2" Fenton Concord Grape Deep 6 Ruffled Bowl – Mari. (scarce item; nice red highlights)
- \_\_\_\_ 123. 8" Fenton Leaf Chain I.C. Shaped Bowl – Mari. (super example; nice color and irid.)
- \_\_\_\_ 124. 8" Fenton Orange Tree I.C. Shaped Bowl – Mari. (another nice example; nice irid.)
- \_\_\_\_ **125. 9" FENTON CAPTIVE ROSE FLAT PLATE – BLUE (RARE; EXCELLENT COLOR AND IRID.; BRIGHT IRID.)**
- \_\_\_\_ 126. Fenton Ten Mums Handled Tankard Water Pitcher – Blue (nice shelf piece; cracked)
- \_\_\_\_ 127. Fenton Footed Orange Tree Handled Water Pitcher – White (almost crystal; very light irid.)
- \_\_\_\_ 128. 9-1/2" Fenton Peacock at the Urn Flat Plate – White (very light in color and irid.; scarce)
- \_\_\_\_ **129. 9" FENTON PEACOCK AT THE URN BOWL W/ 3 IN 1 EDGE – GREEN (VERY SCARCE COLOR AND SHAPE; EXCELLENT IRID.)**
- \_\_\_\_ **130. FENTON G & C FTD. SMALL SIZE CENTERPIECE BOWL – GREEN (ABSOLUTELY RARE; TOUGH SHAPE TO FIND BY ANY MAKER)**
- \_\_\_\_ 131. 7-1/2" Fenton Blackberry 2 Row Open Edge Basketweave Flat Plate – Mari. (rare and desirable; has check in open edge)
- \_\_\_\_ 132. 7-1/4" Tall Fenton Rustic "Sweet Pea" Small Swung Vase – White (scarce; nice color and size)
- \_\_\_\_ **133. 9-1/2" FENTON 3 ROW OPEN EDGE BASKETWEAVE LG. 8 RUFFLED BOWL – DK. ICE BLUE (RARE AND DESIRABLE; NICE SIZE AND IRID.)**
- \_\_\_\_ 134. N Acorn Burr Handled Punch Cup – Ice Blue (check in base)
- \_\_\_\_ 135. N Good Luck Ruffled Bowl w/ Ribbed Ext. – Ice Blue Opal. (rare; has damage on the edge)
- \_\_\_\_ 136. N Good Luck Ruffled Bowl w/ Ribbed Ext. – Dk. Mari. (scarce and very attractive; nice irid.)
- \_\_\_\_ **137. N PEACOCKS RUFFLED BOWL W/ RIBBED EXT. – DK. MARI. (VERY SCARCE; REALLY NICE DETAIL AND IRID.)**
- \_\_\_\_ **138. N WISHBONE FTD. RUFFLED BOWL W/ RUFFLES AND RINGS EXT. – GREEN (HAS TO BE ONE OF THE BETTER EXAMPLES I'VE SEEN)**
- \_\_\_\_ 139. N G & C Butter Lid Only – Ice Green (a very rare part to a rare item)





- \_\_\_\_\_ 140. **N ROSE SHOW FLARED PLATE – MARI. (RARE AND VERY DESIRABLE; NICE REDDISH HIGHLIGHTS)**
- \_\_\_\_\_ 141. **N ROSE SHOW FLARED PLATE – PURP. (TALK ABOUT A BEAUTY; SUPER IRID.; GREAT COLOR; HAS MANUF. OPEN BUBBLE ON EDGE)**
- \_\_\_\_\_ 142. N Peacock at the Fountain Handled Punch Cup – Purp. (goldish highlights)
- \_\_\_\_\_ 143. N Hearts and Flowers Ruffled Bowl w/ Ribbed Ext. – Purp. (a very attractive example but has chip on one point)
- \_\_\_\_\_ 144. N Three Fruits Medallion Ftd. Ruffled Bowl w/ Meander Ext. – Mari. (satiny finish)
- \_\_\_\_\_ 145. **N THREE FRUITS FLAT PLATE W/ PLAIN EXT. – PURP. (VERY SCARCE; SUPER IRID. AND COLOR)**
- \_\_\_\_\_ 146. **N THREE FRUITS FLAT PLATE W/ BASKETWEAVE EXT. – DK., DK. MARI. (ABSOLUTELY SUPER, SUPER; AS DARK AND BRIGHT AS THERE IS)**
- \_\_\_\_\_ 147. N Three Fruits Stippled Plate w/ Ribbed Ext. – Elec. Blue (rare and desirable w/ nice blue highlights)
- \_\_\_\_\_ 148. N Three Fruits Stippled Ruffled Bowl w/ Ribbed Ext. – Dk. Purp. (very scarce; has nice irid.)
- \_\_\_\_\_ 149. **N THREE FRUITS STIPPLED RUFFLED BOWL W/ RIBBED EXT. – LT. AMYTH. (VERY SCARCE; WANTS TO BE LAVENDER; REALLY NICE)**
- \_\_\_\_\_ 150. **N G & C FTD. OVAL BANANA BOAT – ICE GREEN (RARE AND VERY DESIRABLE; MASSIVE ITEM W/ SUPER IRID.)**
- \_\_\_\_\_ 151. N G & C Powder Jar Bottom Only – Blue (rare part; needs a lid)
- \_\_\_\_\_ 152. (3) N Grape Arbor Tumblers – White (all damaged)
- \_\_\_\_\_ 153. N Pillar and Drape Flared Shade – Irid. Luna. (scarce item; nice color and irid.)
- \_\_\_\_\_ 154. Fenton Leaf Tiers Flared Shade – Mari./ Moonstone (scarce item; nice color and irid.)
- \_\_\_\_\_ 155. N Peacock at the Fountain Handled Water Pitcher – Ice Blue (rare; has damaged top rim)
- \_\_\_\_\_ 156. N Singing Birds Handled Mug – Ice Blue (rare but cracked)
- \_\_\_\_\_ 157. Fenton Holly Goblet Shaped Stemmed Compote – Mari.
- \_\_\_\_\_ 158. 7-1/4" Tall Imperial Miniature Morning Glory Swung Vase – Clamb. (nice irid.)
- \_\_\_\_\_ 159. 8-1/4" Tall Imperial Miniature Morning Glory Swung Vase – Clamb. (nice irid.)
- \_\_\_\_\_ 160. Cambridge Inverted Strawberry Spittoon – Green (rare but cracked)
- \_\_\_\_\_ 161. Cambridge Double Star Tumbler – Green (scarce; nice irid.)
- \_\_\_\_\_ 162. M'burg Feather and Heart Tumbler, Etched Ashbury Park 1911 – Mari. (really nice irid.)
- \_\_\_\_\_ 163. M'burg Diamond Tumbler – Dk. Mari. (nice color and irid.)
- \_\_\_\_\_ 164. M'burg Diamond Water Pitcher and (1) Tumbler – Green (dings on base of pitcher; selling both)
- \_\_\_\_\_ 165. **7-3/4" M'BURG LETTERED COURTHOUSE 6 RUFFLED BOWL – AMYTH. (RARE AND DESIRABLE; NICE RADIUM FINISH; MAY HAVE TINY PINHEAD)**
- \_\_\_\_\_ 166. 9-1/2" M'burg Rays and Ribbons 6 Ruffled Bowl – Amyth. (nice radium finish)
- \_\_\_\_\_ 167. 6" M'burg Cosmos Ice Cream Shaped Bowl – Green (nice radium finish)
- \_\_\_\_\_ 168. 8" M'burg Mayan Ice Cream Shaped Bowl – Green (nice radium finish)
- \_\_\_\_\_ 169. **8-1/2" M'BURG TROUT AND FLY 6 RUFFLED BOWL – GREEN (VERY SCARCE; NICE SATINY FINISH AND DETAIL)**
- \_\_\_\_\_ 170. **N ACORN BURR 8 PC. PUNCH SET – PURP. (RARE AND DESIRABLE; SUPER COLOR AND IRID.; OPEN BUBBLE ON BASE)**
- \_\_\_\_\_ 171. (4) N Acorn Burr Handled Punch Cups – Purp. (selling choice)
- \_\_\_\_\_ 172. **N ACORN BURR HANDLED WATER PITCHER – DK. MARI. (RARE; A REALLY SUPER EXAMPLE; NICE)**
- \_\_\_\_\_ 173. N Acorn Burr Tumbler – Dk. Mari. (nice color and irid.)
- \_\_\_\_\_ 174. N Acorn Burr Tumbler – Green (scarce w/ average irid.)
- \_\_\_\_\_ 175. **N PEACOCKS RUFFLED BOWL W/ RIBBED EXT. – AQUA OPAL. (VERY ATTRACTIVE ITEM; W/ A NICE BUTTERSCOTCH OVERLAY)**
- \_\_\_\_\_ 176. **N PEACOCKS RUFFLED BOWL W/ RIBBED EXT. – AQUA OPAL. (VERY ATTRACTIVE PASTEL EXAMPLE; NICE)**
- \_\_\_\_\_ 177. N Peacocks Stippled Ruffled Bowl w/ Ribbed Ext. – Dk. Mari. (very scarce; nice dark color and irid.)
- \_\_\_\_\_ 178. N Peacocks Plate w/ Ribbed Ext. – Mari. (very scarce; has nice bright yellow highlights)
- \_\_\_\_\_ 179. N Peacocks Plate w/ Ribbed Ext. – Ice Green (scarce w/ nice irid.)
- \_\_\_\_\_ 180. **N HEARTS AND FLOWERS BOWL W/ P.C.E. AND RIBBED EXT. – ICE BLUE (QUITE A RARE AND DESIRABLE ITEM; HAS GREAT IRID.)**
- \_\_\_\_\_ 181. N Hearts and Flowers Ruffled Bowl w/ Ribbed Ext. – Ice Blue (very scarce; nice base color w/ average irid.)
- \_\_\_\_\_ 182. N Hearts and Flowers Stemmed Ruffled Compote w/ Ribbed Ext. – Purp. (very scarce; has gold highlights)
- \_\_\_\_\_ 183. N Lustre Flute Breakfast Sugar and Creamer – Green (nice matched pair)
- \_\_\_\_\_ 184. N Butterfly Handled Bon Bon – Mari. (nice satiny finish)
- \_\_\_\_\_ 185. **N THREE FRUITS STIPPLED PLATE W/ RIBBED EXT. – ELEC. BLUE (SUPER EXAMPLE W/ BRIGHT BLUE HIGHLIGHTS)**
- \_\_\_\_\_ 186. N Three Fruits Plate w/ Basketweave Ext. – Amyth. (scarce; nice satiny finish)
- \_\_\_\_\_ 187. N Three Fruits Plate w/ Basketweave Ext. – Mari. (nice satiny finish)
- \_\_\_\_\_ 188. N Three Fruits Bowl w/ P.C.E. and Plain Ext. – Mari. (very attractive item; nice irid.)
- \_\_\_\_\_ 189. N Fruits and Flowers Lg. 8 Ruffled Bowl w/ Basketweave – Green (scarce w/ nice satiny finish)



- \_\_\_\_ 190. N Three Fruits Medallion Ftd. Ruffled Bowl w/ Meander Ext. – Amyth. (nice irid.)
- \_\_\_\_ 191. N Three Fruits Domed Ruffled Bowl w/ Basketweave Ext. – Green (goldish irid.)
- \_\_\_\_ 192. N Wild Strawberry Handgrip Plate w/ Basketweave Ext. – Green (scarce; reddish highlights)
- \_\_\_\_ 193. N Strawberry Bowl w/ P.C.E. and Plain Ext. – Green (very scarce w/ bright highlights)
- \_\_\_\_ 194. N Strawberry Plate w/ Basketweave Ext. – Amyth. (scarce; nice satiny finish)
- \_\_\_\_ **195. N NIPPON PLATE W/ BASKETWEAVE EXT. – MARI. (RARE AND VERY DESIRABLE; NICE SATINY FINISH AND DETAIL)**
- \_\_\_\_ **196. N GOOD LUCK PLATE W/ BASKETWEAVE EXT. – MARI. (VERY SCARCE; NICE SATINY FINISH AND DETAIL)**
- \_\_\_\_ 197. N Good Luck Bowl w/ P.C.E. and Basketweave Ext. – Green (very scarce; nice satiny finish)
- \_\_\_\_ 198. N Good Luck Bowl w/ P.C.E. and Basketweave Ext. – Mari. (scarce; satiny and nice detail)
- \_\_\_\_ 199. N Good Luck Bowl w/ P.C.E. and Ribbed Ext. – Dk. Mari. (scarce; nice dark color and detail)
- \_\_\_\_ 200. N Good Luck Ruffled Bowl w/Ribbed Ext. – Purp. (very scarce; nice color and irid.)
- \_\_\_\_ 201. N Drapery Tri-Cornered Candy Dish – Ice Blue (scarce; has a buffed foot)
- \_\_\_\_ 202. N Raspberry Ftd. Occasional Gravy Boat – Mari. (chipped on one foot)
- \_\_\_\_ 203. N Raspberry 7 Pc. Water Set – Dk. Mari. (scarce and attractive; nice color and irid.)
- \_\_\_\_ 204. N Raspberry Tumbler – Amyth. (scarce)
- \_\_\_\_ **205. N POPPY SHOW RUFFLED BOWL – ICE BLUE (RARE AND VERY DESIRABLE; NICE IRID.)**
- \_\_\_\_ 206. N Fine Cut and Roses Ftd. Ruffled Rose Bowl – Amyth. (scarce; nice and has perfect feet)
- \_\_\_\_ 207. N Fine Cut and Roses Ftd. Ruffled Rose Bowl – Mari. (nice color and irid.)
- \_\_\_\_ 208. N Fine Cut and Roses Ftd. Ruffled Candy Dish w/ Fancy Int. – White (large chip on one foot)
- \_\_\_\_ 209. N Fine Cut and Roses Ftd. Ruffled Candy Dish w/ Plain Int. – Green (chipped on one foot)
- \_\_\_\_ **210. N SINGING BIRD HANDLED MUG – AQUA OPAL. (RARE AND VERY DESIRABLE; NICE OPAL. AND IRID.)**
- \_\_\_\_ 211. N Singing Birds Handled Mug – Blue (scarce w/ blue highlights)
- \_\_\_\_ 212. N Singing Birds Handled Mug – Green (satiny finish)
- \_\_\_\_ 213. N Singing Birds Handled Mug – Purp. (nice color and irid.)
- \_\_\_\_ 214. N Singing Birds Handled Mug – Dk. Mari. (nice color and irid.)
- \_\_\_\_ 215. N Dandelion Handled Mug – Aqua Blue Opal. (scarce base color; base damaged)
- \_\_\_\_ **216. N DANDELION HANDLED MUG – PURP. (VERY SCARCE W/ NICE COLOR AND IRID.)**
- \_\_\_\_ 217. N Singing Birds Tumbler – Purp. (nice color and irid.)
- \_\_\_\_ 218. N Singing Birds Tumbler – Green (nice color and irid.)
- \_\_\_\_ 219. N Springtime Tumbler – Dk. Mari. (really nice color and irid.; scarce)
- \_\_\_\_ **220. N CORN VASE W/ STALK BASE – ICE GREEN (VERY SCARCE AND VERY DESIRABLE; NICE IRID.)**
- \_\_\_\_ 221. 9-1/2" N Diamond Point Standard Swung Vase – Purp.
- \_\_\_\_ 222. 10" N Fine Rib Standard Swung Vase – Dk. Mari.
- \_\_\_\_ 223. N Grape Arbor Tumbler – Dk. Mari. (nice color and irid.)
- \_\_\_\_ 224. N Grape and Gothic Arches Tumbler – Dk. Mari. (super example)
- \_\_\_\_ **225. N BLOSSOMTIME STEMMED RUFFLED COMPOTE – DK. MARI. (RARE AND VERY DESIRABLE; SUPER COLOR AND IRID.)**
- \_\_\_\_ 226. N Rainbow Stemmed Ruffled Compote – Purp. (super irid.)
- \_\_\_\_ 227. N Wild Rose Ftd. Flared Candy Dish – Purp. (chip on foot)
- \_\_\_\_ 228. N Wild Rose Ftd. Turned Up Candy Dish – Dk. Mari. (really nice color and irid.)
- \_\_\_\_ 229. N G & C Tumbler – Amyth. (fair detail)
- \_\_\_\_ **230. N G & C 8 PC. TABLE SIZE PUNCH SET – PURP. (A REALLY NICE SET W/ BLUE AND RED HIGHLIGHTS)**
- \_\_\_\_ 231. N G & C Handled Bon Bon w/ Basketweave Ext. – Elec. Blue (very scarce w/ blue highlights)
- \_\_\_\_ **232. N G & C LG. STEMMED COVERED COMPOTE – PURP. (GETTING TOUGHER TO FIND; NICE COLOR AND IRID.)**
- \_\_\_\_ 233. N G & C Tumbler – Mari. (satiny irid.)
- \_\_\_\_ 234. N Dandelion Tumbler – Mari. (nice color and irid.)
- \_\_\_\_ 235. (3) N Concave Diamond Tumblers – Celeste Blue (nice color and irid.; selling choice)
- \_\_\_\_ 236. N Dandelion Tumbler – Purp. (nice color and irid.)
- \_\_\_\_ 237. N Oriental Poppy Tumbler – Purp. (scarce)
- \_\_\_\_ 238. N Oriental Poppy Tumbler – Mari. (nice color)
- \_\_\_\_ 239. N Peacock at the Fountain Tumbler – Mari. (nice color and irid.)
- \_\_\_\_ 240. N 8 Sided Handled Bushel Basket – White (scarce; frosty)
- \_\_\_\_ 241. 8-1/2" N Grape Leaves 8 Ruffled Bowl – Amyth. (nice color and irid.)
- \_\_\_\_ 242. N Sunflower Deep Ftd. 8 Ruffled Bowl – Amyth. (satiny finish)
- \_\_\_\_ 243. N Wishbone Ftd. Ruffled Bowl w/ Ruffles and Rings Ext. – Purp. (satiny finish)
- \_\_\_\_ 244. N Petals Stemmed 8 Ruffled Compote – Purp. (scarce; satiny)
- \_\_\_\_ 245. N Leaf and Beads Ftd. Tri-Cornered Candy Dish w/ Stippled Rays Int. – Mari. (scarce shape)
- \_\_\_\_ 246. N Round Handled Bushel Basket – Amyth. (nice color)
- \_\_\_\_ 247. N Beaded Cable Ftd. Rose Bowl w/ Ribbed Int. – Amyth. (scarce; satiny)
- \_\_\_\_ 248. N Greek Key Exterior Domed Ruffled Bowl - Green
- \_\_\_\_ 249. N Greek Key Exterior Domed Ruffled Bowl – Mari.
- \_\_\_\_ 250. N Star of David and Bows Domed Ruffled Bowl – Amyth. (satiny irid.)

- \_\_\_\_ 251. 9-1/2" N Stippled Rays 8 Ruffled Bowl – Purp.
- \_\_\_\_ 252. Odd Panel and Lattice Atomizer – Ruby Flash (odd item; no bulb)
- \_\_\_\_ 253. 8-1/2" Imperial Star of David 8 Ruffled Bowl – Amyth. (silvery type irid.)
- \_\_\_\_ 254. Imperial "Bellaire – Good Will Tour" Deep Round Advert. Bowl – Mari. (excellent example)
- \_\_\_\_ **255. EUROPEAN CONCAVE DIAMOND PICKLE CASTER AND FRAME – MARI. (RARE AND DESIRABLE; VERY DIFFERENT; COMPLETE W/ HARDWARE)**
- \_\_\_\_ 256. Imperial Windmill Tumbler – Dk. Mari. (super example)
- \_\_\_\_ 257. Imperial Star Medallion Small Sized Tumbler – Mari. (scarce; nice)
- \_\_\_\_ 258. Imperial Diamond Lace Tumbler – Amyth.
- \_\_\_\_ 259. Sowerby Covered Hen Butter Dish – Blue (scarce; nice color)
- \_\_\_\_ **260. 7"-7-1/2" U.S. GLASS COSMOS AND CONE I.C. SHAPED BOWL – WHITE (HAS HEADDRESS INT.; RARE AND REALLY FROSTY)**
- \_\_\_\_ 261. U.S. Glass Cosmos and Cone Tumbler – Mari. (scarce; nice color)
- \_\_\_\_ 262. Fenton Enameled Ground Cherries Bulbous Water Pitcher and Tumbler – Blue (selling both at once; nice decoration)
- \_\_\_\_ 263. Fenton Lattice and Grape Tumbler – Dk. Mari. (really nice irid.)
- \_\_\_\_ 264. (2) Fenton Paneled Dandelion Tumblers – Amyth. (selling choice; have manuf. ground base)
- \_\_\_\_ **265. FENTON HOLLY 2 SIDED HAT – RED (SUPER EXAMPLE; BRIGHT RED COLOR AND IRID.)**
- \_\_\_\_ 266. Fenton Holly 6 Ruffled Hat – Blue (satiny)
- \_\_\_\_ 267. Fenton Bouquet Tumbler – Blue (really nice example)
- \_\_\_\_ 268. Fenton Butterfly and Fern Tumbler – Green (nice example; has a manuf. ground base)
- \_\_\_\_ 269. Fenton Blackberry Block Tumbler – Blue (satiny; average irid.)
- \_\_\_\_ **270. FENTON ORANGE TREE 8 PC. PUNCH SET – BLUE (VERY ATTRACTIVE SET W/ BRIGHT IRID.)**
- \_\_\_\_ 271. 8-1/2"-9" Fenton Orange Tree 6 Ruffled Bowl – White (scarce; frosty)
- \_\_\_\_ **272. 8-3/4" FENTON ORANGE TREE W/ TRUNK BOWL W/ 3 IN 1 EDGE – GREEN (SUPER SCARCE; NICE COLOR AND IRID.; ATTRACTIVE)**
- \_\_\_\_ 273. Fenton Footed Orange Tree Hatpin Holder – Blue (very scarce w/ bright blue highlights)
- \_\_\_\_ 274. Fenton Orange Tree Covered Powder Jar – Blue (scarce; lid may have a little damage)
- \_\_\_\_ **275. 9"-9-1/2" FENTON CAPTIVE ROSE FLAT PLATE – AMYTH. (A SUPER, SUPER EXAMPLE W/ GREAT IRID.; ONE OF THE BETTER EXAMPLES I'VE SEEN)**
- \_\_\_\_ 276. 8-1/2" Fenton Captive Rose Bowl w/ 3 in 1 Edge – Mari. (nice color and shape)
- \_\_\_\_ 277. 8-1/2" Fenton Heart and Vine Bowl w/ 3 in 1 Edge – Amyth. (scarce; nice irid.)
- \_\_\_\_ 278. Fenton Paneled Dandelion Tumbler – Blue (average irid.)
- \_\_\_\_ 279. Fenton Butterfly and Berry Tumbler – Blue (satiny finish)
- \_\_\_\_ **280. 7-1/2" FENTON HORSEHEAD MEDALLION FLAT PLATE – MARI. (SCARCE; NICE COLOR AND DETAIL)**
- \_\_\_\_ 281. Fenton Horsehead Medallion Ftd. J.I.P. Bowl – Mari. (has damaged leg)
- \_\_\_\_ 282. 8-3/4" Fenton Autumn Acorns 6 Ruffled Bowl – Amyth. (satiny irid.)
- \_\_\_\_ 283. 8-1/2" Fenton Autumn Acorns Bowl w/ Tight C.R.E. – Mari. (scarce shape)
- \_\_\_\_ 284. 9-1/2" Fenton Persian Medallion Lg. 6 Ruffled Bowl – Blue (satiny finish; has chip on pattern)
- \_\_\_\_ 285. Fenton Three Fruits 12 Sided Plate – Amyth. (scarce; nice irid.)
- \_\_\_\_ 286. Fenton Peacock and Grape Deep 8 Ruffled Spatula Ftd. Bowl – Amyth. (great color and irid.; manuf. split on one foot)
- \_\_\_\_ 287. Fenton Peacock and Grape Deep 8 Ruffled Spatula Ftd. Bowl – Green (nice color and irid.)
- \_\_\_\_ 288. Fenton Peacock at the Urn Stemmed 6 Ruffled Compote – Blue (nice color and irid.)
- \_\_\_\_ 289. 9" Fenton Peacock at the Urn 8 Ruffled Bowl – Dk. Mari. (very nice example; great color and irid.)
- \_\_\_\_ 290. Fenton Butterfly and Berry 7 Pc. Water Set – Dk. Mari. (actually quite a nice example)
- \_\_\_\_ 291. Fenton Panther 7 Pc. Ball Ftd. Ruffled Berry Set – Mari. (set is well matched and nice)
- \_\_\_\_ 292. 7-1/4" Fenton Lions Deep Round Bowl – Mari. (scarce; nice dark color and detail)
- \_\_\_\_ 293. 8-1/2" Fenton Stag and Holly Spatula Ftd. 8 Ruffled Bowl – Mari. (nice satiny finish)
- \_\_\_\_ 294. Fenton Birds and Cherries Handled 2 Sided Card Tray – Green (really nice color and detail)
- \_\_\_\_ **295. 9-1/4" FENTON HEARTS AND VINE FLAT PLATE – BLUE (SCARCE; IRID. A BIT SILVERY)**
- \_\_\_\_ 296. 7-1/2" Fenton Leaf Chain Flat Plate – Blue (satiny irid.)
- \_\_\_\_ 297. 7-1/2" Fenton Vintage Grape Flat Plate – Mari. (nice satiny finish)
- \_\_\_\_ 298. Fenton Milady Tumbler – Blue (scarce)
- \_\_\_\_ 299. Fenton Ten Mums Tumbler – Blue (nice example)
- \_\_\_\_ **300. FENTON THISTLE LG. OVAL FTD. BANANA BOWL – MARI. (SCARCE; NICE DARK COLOR AND IRID.)**
- \_\_\_\_ 301. 8-3/4" Fenton Dragon and Lotus I.C. Shaped Bowl – Blue (nice satiny example)
- \_\_\_\_ 302. 9-1/2" Fenton Vintage Grape Lg. 6 Ruffled Bowl – Blue (nice satiny finish)
- \_\_\_\_ 303. 8-3/4" Fenton Thistle 6 Ruffled Bowl – Amyth. (nice satiny finish)
- \_\_\_\_ 304. Fenton Orange Tree Standard Handled Mug – Dk. Mari. (nice dark color)
- \_\_\_\_ 305. Fenton Orange Tree Handled Shaving Mug – Blue (really nice color and irid.)
- \_\_\_\_ 306. Fenton Leaf Tiers Ftd. Tumbler – Mari. (chip on one toe)

- \_\_\_\_\_ 307. Fenton Fluffy Peacock Tumbler – Amyth. (scarce; fair color)
- \_\_\_\_\_ 308. Fenton (or Dugan) Floral and Grape Tumbler – Blue (nice irid.)
- \_\_\_\_\_ 309. Fenton Blueberry Tumbler – Blue (spotty irid.)
- \_\_\_\_\_ 310. Fenton Bouquet Tumbler – Lt. Mari.
- \_\_\_\_\_ 311. Fenton Apple Tree Tumbler – Mari.
- \_\_\_\_\_ 312. Fenton Pastel Swan Salt – Celeste Blue
- \_\_\_\_\_ 313. Fenton Pastel Swan Salt – Ice Green
- \_\_\_\_\_ 314. Westmoreland ABC Stork's Cereal Dish – Mari. (nice example)
- \_\_\_\_\_ 315. 8-1/2" Westmoreland Daisy Wreath 6 Ruffled Bowl – P. Opal. (scarce; nice opal. and overlay)
- \_\_\_\_\_ 316. Dugan Many Fruits Handled Punch Cup – White (very scarce item if you're looking for one)
- \_\_\_\_\_ 317. Dugan Dahlia Tumbler – White (scarce; nice color and irid.)
- \_\_\_\_\_ 318. Dugan Leaf Ray Handled Nappy – White (frosty irid.)
- \_\_\_\_\_ 319. Dugan Constellation Stemmed Ruffled Compote – White (scarce; nice frosty finish)
- \_\_\_\_\_ **320. 9-1/4" DUGAN FANCIFUL LOW RUFFLED PLATE – WHITE (SCARCE W/ SUPER IRID.)**
- \_\_\_\_\_ 321. 9" Dugan Fanciful Low Ruffled Bowl/ Plate – P. Opal. (scarce; nice opal. and irid.)
- \_\_\_\_\_ 322. 8-1/2" Dugan Round Up Low Flared Bowl/ Plate – Amyth. (scarce; light irid.)
- \_\_\_\_\_ 323. 8-1/2" Dugan Windflower Low 8 Ruffled Bowl – Blue (odd irid.)
- \_\_\_\_\_ 324. 8-1/2" Dugan Windflower Low 10 Ruffled Bowl – Amyth. (scarce color)
- \_\_\_\_\_ **325. DUGAN HEAVY IRIS 5 PC. TANKARD WATER SET – MARI. (WELL MATCHED SET; AVERAGE IRID.)**
- \_\_\_\_\_ 326. Dugan Heavy Iris Tumbler – Amyth. (satiny finish)
- \_\_\_\_\_ 327. Dugan Grapevine Lattice Tumbler – Amyth. (really nice bright satiny finish)
- \_\_\_\_\_ 328. Dugan Grapevine Lattice Tumbler – Mari.
- \_\_\_\_\_ 329. Dugan Jeweled Heart Tumbler – Mari. (nice color and irid.)
- \_\_\_\_\_ 330. Dugan Heron Handled Mug – Purp. (very scarce; nice color and detail; ding on heads)
- \_\_\_\_\_ 331. Dugan Beaded Shell Handled Mug – Blue (nice color and irid.)
- \_\_\_\_\_ 332. Dugan Fisherman's Handled Mug – Dk. Purp. (really nice example)
- \_\_\_\_\_ 333. Dugan Stork in the Rushes Handled Mug – Mari.
- \_\_\_\_\_ 334. Dugan Vintage Banded Handled Mug – Mari.
- \_\_\_\_\_ 335. Dugan Golden Harvest 8 Pc. Wine Set – Mari. (nice attractive set; chip on stopper)
- \_\_\_\_\_ 336. Dugan Rambler Rose Tumbler – Blue (super example w/ bright irid.)
- \_\_\_\_\_ 337. Dugan Peacock at the Fountain Tumbler – Amyth. (very nice example)
- \_\_\_\_\_ 338. Dugan Maple Leaf Tumbler – Purp. (nice example)
- \_\_\_\_\_ 339. Dugan Floral and Grape Tumbler – Amyth. (nice example)
- \_\_\_\_\_ 340. 7-3/4" Dugan Fishscales Plate w/ T.C.E. – Purp. (scarce; nice irid.)
- \_\_\_\_\_ 341. 5-1/2"-6" Dugan Cherries 6 Ruffled Sauce w/ J.H. Ext. – Purp. (nice example)
- \_\_\_\_\_ 342. Dugan Question Mark Handled Bon Bon – Amyth. (satiny)
- \_\_\_\_\_ 343. Dugan Question Mark Stemmed Compote w/ T.C.E. – P. Opal. (nice shape; chip on base)
- \_\_\_\_\_ 344. Dugan Folding Fan Stemmed Ruffled 2-Sided Compote – P. Opal. (nice color and irid.)
- \_\_\_\_\_ **345. DUGAN FISHNET 2 PC. EPERGNE – P. OPAL. (SCARCE; NICE COLOR AND OPAL.)**
- \_\_\_\_\_ 346. 8-1/2-3/4" Dugan Apple Blossom Twig Low Flared Plate – P. Opal. (scarce; nice opal.)
- \_\_\_\_\_ 347. 9-1/2" Dugan Cherries Lg. 6 Ruffled Bowl w/ Jeweled Heart Ext. – P. Opal. (scarce; nice opal.)
- \_\_\_\_\_ 348. Dugan Double Stem Rose Domed 10 Ruffled Bowl – P. Opal. (opal. on edge)
- \_\_\_\_\_ 349. Dugan Daisy and Plume 3 Ftd. Oval Ruffled Bowl – P. Opal. (scarce; has chip on one foot)
- \_\_\_\_\_ 350. 5-3/4" Tall Dugan Target Low Flared Vase – P. Opal. (scarce shape; nice opal.)
- \_\_\_\_\_ 351. 5" Dugan Garden Path Variant Deep Round Sauce – P. Opal. (super example; great opal. and irid.)
- \_\_\_\_\_ 352. 6" Dugan Wishbone and Spades 8 Ruffled Sauce – P. Opal. (nice opal.)
- \_\_\_\_\_ 353. Dugan Ski-Star Domed Ruffled Crimped Edge Bowl – P. Opal. (nice shape and opal.)
- \_\_\_\_\_ 354. Dugan Fan Ftd. Handled Gravy Boat – P. Opal. (odd shape)
- \_\_\_\_\_ 355. Dugan Single Flower Ext. Ruffled Bowl – P. Opal. (polished base)
- \_\_\_\_\_ 356. Dugan Grape Delight 6 Ftd. Rose Bowl – Dk. Mari. (super color and irid.)
- \_\_\_\_\_ 357. Dugan Pony 6 Ruffled Bowl – Mari. (satiny; fair detail)
- \_\_\_\_\_ 358. 9-1/2" Dugan Cosmos Variant 6 Ruffled Bowl – Mari.
- \_\_\_\_\_ 359. Dugan Daisy and Lattice Tumbler – Mari.
- \_\_\_\_\_ 360. (2) Dugan Stork in the Rushes Tumblers, Both Variations – Mari.

## NOTES

---



---



---



---

FOR THE RESULTS OF THIS OR ANY BURNS AUCTION SERVICE AUCTION  
SEND A S.A.S.E. AND \$3.00 (INCLUDE NAME OR DATE OF AUCTION) TO:

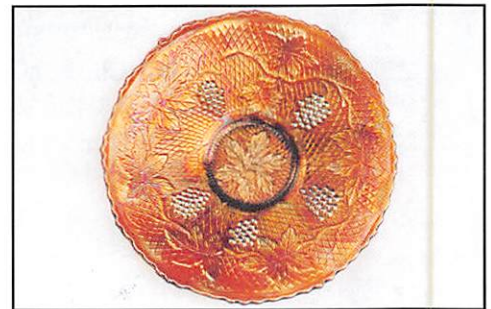
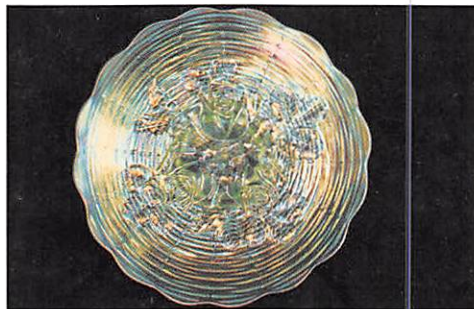
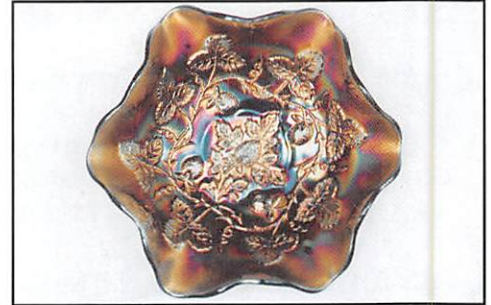
EMMA TILTON

P.O. BOX 273 • GNADENHUTTEN, OH 44629

**VISIT US ON THE WEB!**

<http://zeus.kspress.com/woodsland/burnsauction>

for pictures, complete listings and upcoming auctions



# BURNS

**AUCTION SERVICE**

P.O. BOX 608 • BATH, NEW YORK 14810

**Friday, July 28, 2000**

**Preview: Late Thursday Evening**

**& 7:00 A.M. Friday**

**Auction: 9:00 A.M.**

*at the*

**Holiday Inn – Parkersburg**

Rt. 50 at I-77

Parkersburg, West Virginia • (304) 485-6200

Exit 176 off I-77

West Virginia Lic. No. 888

First Class Mail  
U.S. Postage  
PAID  
Eugene, Oregon  
Permit No. 305

