

CARNIVAL GLASS AUCTION

Saturday, July 22, 2000 - 9:30 A.M.

Preview:

Friday 5:00 - 7:00 P.M. and

Saturday 8:00 - 9:30 A.M.

Holiday Inn, Carlinville, Illinois

Call (800) 322-7546 for Reservations

70



125



58



68



204



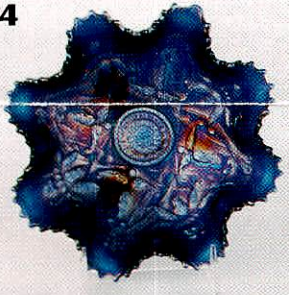
57



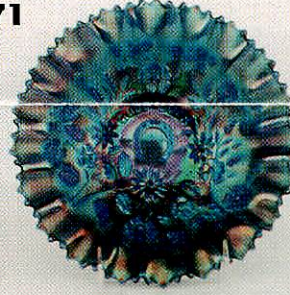
33



74



71



90



50



66



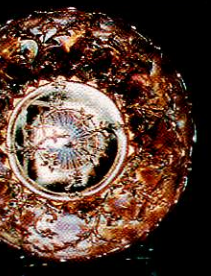
55



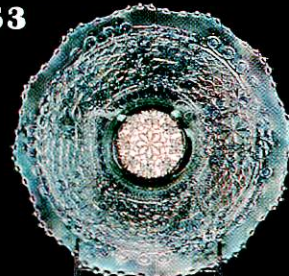
141



34



53



51



43



CARNIVAL GLASS AUCTION

with LIVE TELEPHONE BIDDING

Saturday, July 22, 2000 - 9:30 A.M.

Preview: Friday 5:00 - 7:00 P.M. and Saturday 8:00 - 9:30 A.M.

Holiday Inn, Carlinville, Illinois

Exit #60 off of I-55 on the west side of the road. Just 30 miles south of Springfield, IL and 60 miles north of St. Louis, MO.

Call (800) 322-7546 for Reservations

Ask for Special Room Rate of \$64.50 + tax under Ayers Auction Block of Rooms.

Cut off for special room rate is July 7th. Don't delay, Call today!!

Presented by:

Ayers Auction Service

LIVE TELEPHONE BID AND WRITE-IN BID POLICIES

1. Live Telephone bids can be arranged by sending the numbers of the item(s) and your name, address, home phone number and the phone number where you can be reached on the day of the auction, Sat. July 22, 2000, during the hours the auction will be occurring, CST to David or Amy Ayers.
2. Write-in (Absentee bids will be accepted by sending the numbers of the item(s) desired and the amount bid on each to: Ayers Auction service, P.O. Box 320, Tremont, IL 61568-0320.
3. All Absentee bids and arrangements to participate in Live Telephone bidding may also be done with David or Amy Ayers over the telephone: (309) 925-3115, by FAX: (309) 925-7777, or by e-mail to: ayers@dpc.net.
4. There will be a \$5.00 handling charge for each successful absentee bid. Shipping and insurance charges are additional. Be aware, there will be a \$5.00 charge per phone call placed to you during the auction to participate in Live Bidding. This cost is in addition to handling, shipping, and insurance charges. You will be billed for each phone call, even if you are not the successful buyer. We ask that you do not tie up the telephone lines by speaking at length with the staff of the Auction Service prior to the completion of your Live bidding. The staff will have multiple calls to complete and your cooperation is appreciated.
5. All successful bidders will be notified by a phone call from David or Amy Ayers 1-3 days after the auction.
6. If interested in placing an absentee bid or participating in the Live Telephone bidding you must contact David or Amy N.L.T. Tuesday, July 18, 2000. Bids received after this date may not be carried out.
7. Please place absentee bids in the following increments: \$1 - \$300 use \$5.00 increments; \$300 & up use \$25.00 increments.
8. If you do not receive an item that sold for less than your absentee bid, assume we cancelled your bid because the piece of glass had below average color, manufacture problem, damage, or was not listed correctly.
9. To receive a price list for this auction send \$3.00 and a SASE to the above address. (Make checks payable to Amy Ayers.)

Our next auction scheduled for November 4, 2000 still has a little room left if you have anything you want to consign. Contact David or Amy to be included.

To see more color pictures, visit our website: <http://woodsland.com/ayers>

- _____ 1. M—Fenton Orange Tree 3 ftd Fruit Bowl. Has some repairs and couple small chips.
- _____ 2. G w/Mar overlay—Stippled Rays 9” ruffled Bowl.
- _____ 3. M—Dugan Leaf Ray Nappy.
- _____ 4. A—Dugan Pulled Loop 11 ½” Vase.
- _____ 5. A—Fenton Stippled Rays 2 handled Bon Bon.
- _____ 6. (Contemp.) G—Imperial (IG) Pansy Nappy.
- _____ 7. A—Dugan Coin Spot Compote.
- _____ 8. G—Imp. Grape 7” ruffled Bowl. Base bruise.
- _____ 9. G—N Beaded Cable Candy Dish. Alaskan irid. Nice.
- _____ 10. A—Westmoreland Corinth 7 ½” Vase.
- _____ 11. **Ginger Ale—Huge Victorian-style Lamp Globe. Ball shaped globe with 3” convex crown has only one opening underneath. It is ornate in design & we estimate it to have been used for an outside lamppost or hung on ceiling light fixture. Awesome.**
- _____ 12. Choice-Lt M—McKee (2 sets of 5 each) Ohara/Loop 3” tall Cordials. Super Rare. Set A) is perfect, Set B) has one cordial with base chip.
- _____ 13. Dk M—US Glass Rising Sun Tumbler. Wonderful example. Scarce.
- _____ 14. Choice-Dk M—US Glass Diamond & Daisy Cut Tumblers (4 ea). Super nice & rare.
- _____ 15. M—Plain Jane Powder Dish w/Lid. Minor nick.
- _____ 16. B—Pineapple & Fan Tumble Up Bottle only. Wow! Hard to come by color.
- _____ 17. M—Imp. Heavy Grape 9” Bowl. Super Color.
- _____ 18. Amber—Cordial Tray 7 ½”. Don’t know much about this tray but it is very nice.
- _____ 19. **M—N Strawberry 9” Plate w/ Plain Back. Heartbreaker with cool-cool colors.**
- _____ 20. Dk M—N Singing Birds Mug. Super pinks&purples.
- _____ 21. Ice G—Dugan Swan Salt. Really glows w/ blacklight.
- _____ 22. Cel B—Dugan Swan Salt. Nice example.
- _____ 23. A—Mlbg Hanging Cherries Creamer. Super irid.
- _____ 24. M—US Glass Palm Beach Tumbler. Excellent example with super hues.
- _____ 25. **Super Emerald G—Fenton 2 rows Open Edge Basket. Neat color.**
- _____ 26. Amber—Imp. Luster Rose Creamer. Wow! Super.
- _____ 27. M—Fenton Butterfly & Berry 7 Pc Berry Set. Nice and dark. One of the best sets I’ve seen.
- _____ 28. M—Dugan Garden Path Variant 9” ruffled Bowl. Super, Super pinks and purples.
- _____ 29. Super M—Imp. Fashion Punch 10 piece Set. Awesome & matching.
- _____ 30. (Non-iridized) Blue Opal—N Beaded Cable Rose Bowl. Small chip on marie. Rare.
- _____ 31. **Super Pastel Lime G—N Hearts & Flower 9” Plate. Killer pastels!! Show me one better. Rare and highly desirable.**
- _____ 32. **Dk M—(Australia) Crown Crystal Glass Co. large Butterfly & Waratah Compote. Super Radium. One the better examples I’ve seen.**
- _____ 33. **BA—(Australia) Crown Crystal Gum Tips 8 ½” Vase. Super radium. Mouth is 3 ½” & Base is 2 ¾”. WOW!**
- _____ 34. **Pastel M—Trailing Flowers 7 ½” Bowl. Super sweet. Have you seen any of these lately?**
- _____ 35. Dark M—(India) JAIN Left Hand 6” Variant Vase. Very different mold work from others. This one is as cool as a cucumber.
- _____ 36. **Dark M—(India) JAIN Elephant 7” Vase. Great color & iridescence.**
- _____ 37. Helios G—Imp. Ripple 8” super multicolored Vase.
- _____ 38. Dark M—US Glass Co. Rising Sun 4” Juice Glass.
- _____ 39. **Super M—(Germany) Brockwitz Diamond Cut Shield Tumbler. Sweet as they come.**
- _____ 40. Dark M—US Glass Co. Omnibus Tumbler. Nice.
- _____ 41. M—Imp. 474 stemmed Wine. Nice.
- _____ 42. Dark M—Pineapple & Fan 3 Pc Tumble Up Set. Sweet. Tray has a little chip.
- _____ 43. **Amber/M—(Maker unconfirmed) Regal banana boat shaped Jardiniere. Nice detail on pattern. Super piece & super rare.**
- _____ 44. **B—Fenton Dragon & Lotus ftd Nut Bowl. Super silky highlights. Awesome example.**
- _____ 45. Dk M—Fenton Dragon & Lotus 9” ruffled Bowl with lots of pinks, blues and purples.
- _____ 46. G—Fenton Holly 8 ½” low Bowl. Neat as can be with electric highlights.
- _____ 47. Dk M—Fenton Holly 9 ½” Plate. This super plate is almost chop size. Radium highlights.
- _____ 48. **Reverse Amberina—Fenton Blackberry Open Edge Basket. Shazam! This one’s got it all.**
- _____ 49. P—N Grape & Cable Variant 9” Bowl with Basketweave exterior and nice pie crust edge.
- _____ 50. **B—N Grape & Cable Variant 9” stippled Bowl with Rib Back & pie crust edge. Super HOT!**
- _____ 51. **(Non-iridized) Vas Opal—N Poinsettia & Lattice 9” ruffled Bowl. Wow! An opal collectors dream.**
- _____ 52. Dk M—Fenton Sail Boats 6” flared-up Plate. Nice example with Orange Tree exterior.
- _____ 53. **Super Ice G—Fenton Leaf Chain 7 ½” Plate. Super pastels on this rare find. An absolute stunner. One of a kind rarity. Top piece in this auction.**
- _____ 54. M—Imp. Columbia Compote w/ wonderful colors.
- _____ 55. **Super Rare M—N Grape & Cable stippled 8 ½” Plate. Wow! Super rare with pastels. Breath taking.**
- _____ 56. G—N Strawberry 9” Plate w/ BW ext. A bit silvery.
- _____ 57. **B—(Sweden) Eda Glass Co. Tokio 7 ½” Vase. Neat. How many of these have you seen?**
- _____ 58. **Super Elec. B—N Leaf Columns 10 ½” Vase. Super Electric! Holy smokes! First cobalt blue one I’ve seen. Does have small pinhead-size dot of irid. gone on top, can’t be seen. So what?**
- _____ 59. Pastel M—N Singing Birds stippled Mug. Super.
- _____ 60. M—Fenton Peacock & Urn ruffled Compote. Dark.
- _____ 61. M—Imp. Octagon 8 ½” Bowl. Super color. Roughness around top edge.
- _____ 62. M—Imp. Floral & Optic Rose Bowl. Great pastel coloring. Perfect feet. Nicest one I’ve seen.
- _____ 63. P—N Lustre Flute Creamer.
- _____ 64. M—Imp. Fine Cut & Oval Compote. Nice example.

65. Lt M—Royal Pineapple 8" Vase. Tiny rib nick. Rare.
66. **Spruce G—Fenton Vintage 9" Plate. Wow!**
This rare find. This awesome plate has a base color of a mixture of green & teal. It is super with satin highlights and very thick iridescence. Little fruit wear. Even color. One toughy.
67. M—Fenton Little Flowers 6" Plate. Cool even colors.
68. **Super Duper M—Fenton Peacock & Grape 9 1/2" collar base Plate. Blow away electric highlights.**
69. **BA—(Australian) Crown Crystal Glass Butterfly Bush ruffled Compote. High radium iridescence.**
70. **Awesome Vaseline Opal—Fenton Fine Rib 9" Vase. A beauty! Ultra rare & most desirable.**
71. **B—N Good Luck 9" PCE Bowl with Rib Back. Nice even electric highlights. Has a smoke tint inside glass. Sweet example.**
72. Dk M—(German) Brockwitz Triands Butter Dish Lid only. Perfect example. Super rare if you need one.
73. B—N Greek Key 9" Bowl with Rib Back. Gold and silver highlights.
74. **Killer Elec B—N Wishbone 8" ftd rfld Bowl. Very desirable. This one will blow your mind.**
75. Clambroth—Imp. Windmill 5 1/2" Berry Bowl. Nice & pastel. Seen any of these lately? Scare color for size.
76. M—Fenton Fantail whimsied ruffled flatten out Master Berry Bowl w/ Butterfly & Berry ext. Super.
77. **BA—(Australian) Crystal Glass Kookaburra 10" Float Bowl. Super hunk of glass. Rare, bit silvery.**
78. B—Fenton Chrysanthemum 10" Bowl with ball feet. Gold highlights.
79. M—N Beaded Cable 7" Candy Dish. Great example.
80. M—Imp. Fashion 2 Pc Punch Bowl & Base. Nice.
81. M—N Grape & Cable Shot Glass. Sweet piece.
82. M—Fenton Horse Head Medallion JIP Bowl. Dark.
83. B—N Super Electric Drapery 8" Vase. Minor mold roughness on feet. Blow away multicolored iridescence
84. M—Fenton Inverted Coin Dot 7 Pc Water Set. Super matching dark set. One tumbler has small chigger.
85. G—Mlbg Zig Zag 10" Bowl. Small chip on base but still a nice example.
86. G—N Raspberry Water Pitcher. Spout & hndl nicks.
87. A—N Stippled Rays 10" rfld Bowl. Multi-elec. irid.
88. A—Fenton Grape & Cable 8" ball ftd Bowl.
89. B—Dugan Roundup 9" Plate. Wonderful satin colors. One tip has epoxy.
90. **M—Dugan Heavy Iris Water Pitcher. Outstanding example of a scarce pitcher.**
91. M—Dugan Butterfly & Tulip 12" Bowl whimsey with 2 sides up. Lots of pinks and blues.
92. **B—N Drapery Var. 8" Super Electric Vase. 3 1/2" mouth & 2 3/4" base. This one is a show stopper.**
93. **Honey M—6 Pc Water Set w/ white enamel hand painted decoration on all pieces. There is a German inscription on the pitcher. Interpreted: "Brothers Drink Till You Sink".**
94. **(Non-iridized) Choice-Blue Opal—N Drapery Variant Tumblers (5 each) Very, very rare!**
95. **Clear to M—(Maker Unknown) Swirl Type Spittoon. Pretty Neat. Iridized only on it's wide lip.**
96. (Contemp.) Red—Shot Glass. Great color.
97. (Contemp.) A—Hanson Eye Winker Toothpick Holder. Scarce.
98. P—N G & C 8" Plate. Rare size. Little grape wear.
99. M—Fenton Horse Head Medallion 7" ruffled Bowl. Exceptional piece.
100. M—Fenton Horse Head Med. 3 ftd Nut Bowl.
101. Pastel M—Mlbg 8" Little Stars 6 ruffled Bowl. Sweet treat, really neat.
102. BA—Bullet (sphere shaped) Hatpin. Elec. highlites.
103. Choice-Hatpins (2 ea)
 A) BA—Six Plums a.k.a. Cattails,
 B) (Non-iridized) Black—Flying Bat trimmed in Gold. Both are cool looking.
104. **B—Fenton 7 Pc Orange Tree ftd Water Set. Super matching set. Minor mould roughness on feet. Nice electric highlights.**
105. **Super W—Fenton Apple Tree Water Pitcher. WOW! Nice pastel coloring. Very scarce and rarely offered at auction.**
106. **W—Fenton Apple Tree Tumbler. Nice. Scarce.**
107. A—Mlbg Holly Sprig 9" Bowl w/ CRE. Radium.
108. M—Imp. Lustre Rose 2 Pc Butter Dish. Fantastic multicolored example.
109. B—N Round Bushel Basket. Nice example also.
110. W—N 8 sided Bushel Basket. Great soft pastel irid.
111. Super M—Dugan Wreathed Cherry large oval Berry Bowl. Awesome pinks and purples.
112. M—Fenton Dragon & Lotus ICS 8" spat ftd ruffled Bowl. Sweet highlights.
113. Super Pumpkin—Fenton Peacock and Urn 9" ruffled Bowl. Fantastic example.
114. M—Fenton Peacock & Grape 8" spat ftd ruffled Bowl. Very shiny finish.
115. M—Dugan Four Flower 8" Bowl w/ Soda Gold exterior. Nice.
116. M—Kokomo 3 ftd Rose Bowl. First one I've seen with perfect feet.
117. M—Fenton Butterfly & Berry Sugar Bowl, no lid. Good one if you need it.
118. Teal—Westmoreland Corinth 8" Vase. Nice overlay.
119. Teal—Westmoreland Corinth 9 1/2" JIP Vase. Internal small bruise, been there since made.
120. **Dk M—(Sweden) Eda Asters 7 3/4" round Rose Bowl. Super detailed pattern. Rare.**
121. **Dk M—(Sweden) Eda Asters 4 1/2" round Rose Bowl. Rare size.**
122. **Dk M—(Sweden) Eda Asters 3 1/2" round Rose Bowl. Too cute!!**
123. Dk M—(Finland) Riihimaki Western Thistle 5" Vase. Wow!! Great detail.

124. **B—(Sweden) Eda Svea a.k.a. Sweden 5 ½" Rose Bowl. Factory ground base. Super & scarce.**
125. **M—European (Maker unknown at this time) Camiella Loop squatty 5 ¾" Vase. Named by the auctioneer (after his daughter). Unique!**
126. **(Non-iridized) Red—(Sweden) Eda Curved Star 7 ½" Vase. Great example. Scarce is not the word for this vase in red!**
127. **(Non-iridized) Red—(Sweden) Eda Rose Garden 5 ¼" oval-letter Vase. Ultra rare little gem in red!!**
128. **B—(Sweden) Eda Rose Garden 9" Bowl. Hard to find size. Typical factory ground base.**
129. **Electric B—(Sweden) Eda Rose Garden 5" Bowl. Great electric highlights. A little beauty!**
130. **M—(Sweden) Eda Rose Garden 5 ½" Bowl. Nice dark color on this super piece.**
131. **M—(Sweden) Eda Curve Star large 6 ½" Rose Bowl. Awesome piece of glass.**
132. (Contemp.) P—Fenton Diamond Lace large 3 Lily Epergne. WOW! Spectacular color!
133. (Contemp.) Ruby—Fenton Large Butterfly three-hole Candle Holder. Retired mould 1989 FAGCA souvenir.
134. (Contemp.) Choice-A) Velva Blue—Fenton Hobnail Toothpick Holder. Banquet Favor 1981 FAGCA Convention, B) Velva Rose—Fenton Hobnail Toothpick Holder. Banquet Favor 1980 FAGCA Convention.
135. (Contemp.) Velva Blue—Fenton Butterfly & Berry whimsy Vase made out of tumbler into this unique 3 ruffled hat shape. From Sample Sale at FAGCA 1981 Convention.
136. (Contemp.) B—Joe St.Clair Iris Flower Picture Frame. Souvenir marked on it's back: ICGA 10th Anniversary Indianapolis, Indiana 1976 J.S.T.C. It is super neat.
137. (Contemp.) Sea Green Satin—Fenton #6840GE Three Moths embossed 6 ½" round Covered Powder Dish. Made from Verlys Mould. Very nice.
138. Choice-BA—Hatpins (2 ea)
A) Top O' the Morning and
B) Big Butterfly. Both are super.
139. A—Fenton April Showers 11" Vase. Nice.
140. M—Fenton Acorn 8" ruffled Bowl.
141. **Dk M—(Germany) Brockwitz Super Star oval shaped Jardiniere. Scarce and intricate.**
142. **Dk M—(Sweden) Eda Sunken Daisy 8 ½" Bowl. WOW! European glass at it's best. Normal ft nicks.**
143. **Dk M—(Sweden) Eda Sunken Daisy 9" flared out Bowl. Another fantastic example. Normal toe roughness from the mould.**
144. **Dk M—(Sweden) Eda Sunken Daisy 5" Bowl, nut bowl shape. Sweet as can be.**
145. **B—(Sweden) Eda Sunken Daisy 3 ½" Rose Bowl. Small but oh so cute.**
146. Choice-M—Pineapple & Fan Cordials (5 ea).
147. Dk M—Imp. Four-Seventy-Four 4" Wine. Super example.
148. (Contemp.) Frosty W—Imp. (IG) Tiger Lily 7 Pc Water Set. Has wonderful pastels.
149. (Contemp.) Pastel Pink—Imp. (IG) Tiger Lily 7 Pc Water Set. These are not easily found.
150. (Contemp.) Frosty W—Imp. (IG) Lustre Rose 2 Pc Butter Dish. WOW! Super coloring.
151. (Contemp.) Pastel Pink—Imp. (IG) Lustre Rose 2 Pc Butter Dish. Sweet.
152. (Contemp.) Choice-Imp. (IG) A) White—Grape Milk Pitcher, B) Smoke—Grape Milk Pitcher. Both are fantastic examples.
153. (Contemp.) Smoke—Imp. (IG) Grape Water Pitcher. Nice.
154. (Contemp.) Choice-Pastel Pink—Imp. (IG) Tiger Lily Tumblers (2 ea).
155. Dk M—N Wish bone 3 ftd 8" ruffled Bowl. Super and dark.
156. Pastel Clambroth—Imp. Scroll Embossed large Compote. This one is really sweet.
157. G—N Rainbow Compote w/ Basketweave exterior.
158. P—N Diamond Point 8" Vase. Silvery.
159. M—Dugan Stork & Rushes Mug With Lattice Band. Nice dark example.
160. M—Fenton Stippled Rays 7" Plate. Dark and even.
161. M—US Glass Golden Harvest Wines. (4). One has a nick on base.
162. B—Fenton Paneled Diamonds & Bows 8 ¼" Vase. Small chip on marie.
163. M—Imp. Lustre Rose Creamer. Good color.
164. Choice-W—N Grape Arbor Tumblers (2 ea). Both A) and B) are fantastic examples. Scarce.
165. Choice-G—N Raspberry Tumblers (2 ea). A) has gold highlights and B) even color.
166. Vaseline—Fenton Open Edge Basket, 2 row and 2 sides up. Epoxy on edge.
167. Choice-Toothpick Holders (3 ea). A) Purple—N Flute, mold roughness; B) Blue—S Repeat; and C) Blue—Stork & Rushes.
168. One money for 3 Hatpins: Big Butterfly, Six Plumbs, and Triad. All three have damage.
169. A—N Grape & Cable large size Fruit Bowl. Super electric gold, purple and blue iridescence.
170. W—N Nippon 9" PCE Bowl. Scarce color.
171. M—N Wishbone 9" 3 ftd Bowl. Soft satin highlights.
172. **Smokey B—Fenton Ribbon Tie 9" 3in1 edge Bowl. Super duper color. Scarce.**
173. **B—Fenton Captive Rose 9" Plate. Electric multicolored highlights in center, gold on edges. Neat Plate.**
174. **Super Pastel M—N Strawberry 9" Plate Basketweave exterior. Incredible pastel coloring.**

175. **Another Super Pastel M—N Three Fruit 9" Plate with Basketweave ext. Outstanding example.**
176. Fiery A—N Three Fruits 9" PCE Bowl. Satin highlights and Basketweave exterior.
177. G—N Three Fruits 9" PCE Bowl with scarce Plain Back.
178. Choice-M—Argentina Ribbed Barrel Tumblers (4 ea). Each has "NCP" on bottom.
179. Choice-M—US Glass Omnibus Tumblers (4 ea). All good examples & all have typical ground bases.
180. **Choice-M—US Glass Rising Sun Juice Tumblers (4 ea). All four are great examples.**
181. M—Imp. Cane Milk Pitcher. Don't know anymore of any more of these. Nice color.
182. M—N Grape & Cable ftd Sherbert. Good color.
183. Amberina (?)—Dugan Grapevine Lattice Tumbler. Very strange base color. Has red iridescence and amberina base. Cool.
184. M—Fenton Peacock & Urn Compote. Soft satin highlights.
185. M—Fenton Ribbed Holly Jelly Compote.
186. Dk M—Imp. Robin Mug. Nice example.
187. M—Dugan Feather Scroll Toothpick Holder. This has every indication of being old.
188. M—Imp. Octagon Water Goblet.
189. (Contemp.) Pink—Westmoreland Robin on a Nest with twig feet. Limited production on this scarce bird.
190. Choice-(Contemp.) Blue Opal—Beaded Shell Mugs (2 ea). 1978 ACGA Souvenir.
191. (Contemp.) B—Imp. Souvenir 1978 ICGA Candleholders.
192. Choice—(Contemp.) Toothpick Holder (3 ea).
A) Pink—Octagon, B) Marigold—Octagon, and
C) White—Diamonds.
193. (Contemp.) Pink—Imp. (IG) Whirling Star 6" Bowl.
194. (Contemp.) Sunset Ruby—Imp. (IG) Field Flowers Water Pitcher. Hard to find color. Rare beauty.
195. Choice—(Contemp.) Pink—Imp. (IG)
A) Hattie banana-boat shape Bowl with 2 sides up;
B) Hattie 8" ICS Bowl.
196. (Contemp.) Pink—Imp. (IG) Scroll Embossed 8" Bowl. Pretty.
197. M—Fenton Two Flowers Rose Bowl. Good feet. Scarce.
198. M—Dugan Coin Spot Compote. Nice.
199. M—Fenton Grape & Cable 8" Bowl.
200. **M—Fenton Plaid 9" ruffled Bowl. Awesome example.**
201. Dk M—Imp. Columbia Variant stemmed Compote. Rare and desirable.
202. Clambroth—Imp. Octagon 9" Bowl. Pastel highlites
203. M—Fenton Holly 9" Bowl.
204. **M—Dugan Roundup 9" ruffled Plate. Fantastic example of a super plate.**
205. M—Dugan Four Flowers Variant 9" Bowl. Nice.
206. Dk M—N Strawberry 9" PCE Bowl with Basketweave exterior. Dark example.
207. M—Fenton Waterlily & Cattails ftd Sauce. Wonderful.
208. M—Imp. Floral & Optic 9" 3 ftd Bowl. One of the prettier examples.
209. M—Fenton Fern Panels JIP Hat. Good example.
210. G—Fenton Vintage 7" ICS Bowl. Satin finish.
211. A—N Raspberry 3 ftd Candy Dish with Daisy & Plume exterior. Normal foot nicks.
212. W—Dugan Double Stem Rose 9" Bowl. Super pastel highlights. Chigger bite on foot.
213. G—Fenton Thistle 8" CRE Bowl. Scarce edge treatment.
214. A—Fenton Diamond & Rib 12" Vase. Has awesome blue and purple overlay and 3 1/2" base.
215. G—N Fruits & Flowers Bon Bon with Basketweave exterior. Nice example.
216. Super Radium G—Mlbg Holly Card Tray. Good color.
217. M—Fenton Feathered Serpent 10" ruffled Bowl. Worn iridescence.
218. Super M—Imp. Octagon Decanter, sorry no stopper. Super duper highlights.
219. Multi Electric M—Imp. Heavy Grape 9" Bowl. If you want a nice one, here it is.
220. M—N Good Luck 9" ruffled Bowl with Basketweave exterior. Uneven color.
221. M—Imp. Ripple 10 1/4" Vase. Outstanding example.
222. Dk M—Imp. Ripple squatty 6" Vase. Wonderful iridescence, almost amber.
223. Colorful M—Pair of Candle Sticks.
224. BA—Dugan Six Petals tri-cornered Bowl. Chip on marie. Blow away highlights.
225. Aqua Opal—Four Pillars 11" Vase. Buff on one toe
226. **Super M—Mlbg Rays & Ribbons 9 1/2" scalloped edge Bowl. Super.**
227. **PO—Dugan Apple Blossom Twigs 9" ruffled Bowl. WOW! Fantastic example.**
228. M—Fenton Peacock Tail deep 8 1/2" Bowl.
229. **Fantastic Pumpkin—Fenton Concord 8" 3in1 edge Bowl. Nice. Sweet & sassy.**
230. M—Imp. Grape 7 Pc Water Set. Very nice matching set.
231. M—Imp. Double Scroll 3 Pc Console Set. Dark and perfectly matched.
232. Fiery A—N Leaf & Beads Rose Bowl. Goldish iridescence.
233. M—Imp. Lustre Rose Water Pitcher. Nice example.
234. M—Fenton Orange Tree Loving Cup. Chip by inside handle but good color.
235. M—Imp. Little Bo Peep Mug. Nice Example.
236. Dk M—Imp. Rococco 4 1/2" Vase. Super color and iridescence. Little roughness on base from mold.
237. M—Fenton Kittens Cup. Cute.
238. Pastel M—Fenton Kittens Saucer. Sweet pastel iridescence.

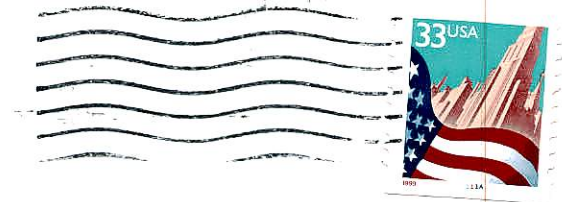
239. M—N Grape & Cable stippled & banded Pin Tray. Toot-sweet example.
240. Dk M—US Glass Omnibus Water Pitcher. Dk example of rare pitcher w/ typical ground base.
241. Super M—Imp. 474 Milk Pitcher. Outstanding example.
242. M—Band of Stars Decanter & normal Stopper w/ usual ground marks on bottom of stopper. Super multicolored irid. on this extremely rare decanter.
243. Amber—(Finland) Riihimaki Western Thistle Tumbler. Nice and rare.
244. Dk A—Dugan Maple Leaf 7 Pc Water Set. Pitcher has a couple minor nicks & silvery iridescence. Tumblers are good.
245. B—(England) Sowerby Covered Hen on Nest. Scarce bird but does have a small nick on marie.
246. B—Fenton Vintage small size Single Lily Epergne. Normal roughness on bottom of lily. Nice.
247. Dk Amber—Fenton Holly 9" ruffled Bowl. Nice scarce color.
248. M—Fenton Bouquet Water Pitcher. Sweet highlights and dark.
249. M—Tree Bark Water Pitcher.
250. M—Imp. Octagon 8" small size Water Pitcher.
251. M—Imp. Poinsettia Milk Pitcher. Dark with pastel iridescence.
252. Dk M—Imp. Pansy Pickle Dish. Mold roughness on edge.
253. Pastel M—Mlbg Feather & Heart Tumbler. Inscribed: "Dora 1910". Super pastel.
254. Choice-Marigold—Tumblers (5 ea).
A) Ftd Orange Tree, nicks on feet;
B) Lustre Rose, dark and nice;
C) Butterfly & Berry, nice;
D) Fieldflower, nice;
E) Springtime, good dark color.
255. Choice-B—(Germany) Brockwitz Curved Star Cathedral Chalice (2 ea).
A) Good color, 7" tall with small nick on bottom;
B) Silvery, 6 1/2" tall with small chips on lips.
256. Super Pumpkin Dk M—(Germany) Brockwitz Rose Garden 7 1/2" rectangular letter Vase. Big manufacturer flaw in base, too bad, this one is sweet.
257. B—(Germany) Brockwitz Rose Garden 8 1/4" Pitcher. Rare but does have a few little chips.
258. B—Dugan Grape Delight Nut Bowl. Good feet.
259. M—Dugan Grape Arbor ftd Fruit Bowl. Scarce.
260. Smoke—Imp. Grape 9" Bowl. Super example of Imperial Smoke.
261. A—Fenton Diamond & Rib 10 1/2" swung Vase. Nice colors and 3 1/2" base.
262. M—Imp. Ripple 15" multicolored Vase with 4" base and 5" Mouth. Super.
263. M—Imp. Optic One handled Nappy. Nice example.
264. G—Fenton Autumn Acorn 8 1/2" 3in1 Bowl. Silvery.
265. M—Imp. Tree of Life 5" Bowl.
266. G—Westmoreland Shell & Jewel Cream & Sugar, no lids. Base chips on both.
267. Helios—Imp. Open Rose Sugar, no lid. Couple chips.
268. G—Imp. Diamond Lace 5" Berry Bowl. Nice.
269. P—N Smooth Rays 5 1/2" ruffled Berry Bowl. Nice example.
270. Teal—Westmoreland Smooth Rays 9" Bowl.
271. M—(2) Prism Salt Dips.
272. M—Single Candlestick with six panels. Couple small chiggers.
273. Lt M—Lamp Globe only for Kerosene Lamp. Lightly iridized.
274. Clear B—Flashed iridized Mayo Bowl w/ Ladle.
275. M—Vintage pattern center handled Serving Bowl.
276. B—Fenton Butterfly & Berry 9" swung Vase. Mold roughness on top.
277. M—Westmoreland Pearly Dots 8" CRE Bowl. Nice.
278. Horehound—N Rainbow 9" rfld Bowl w/ BW ext.
279. G—Fenton Coin Spot 9" 3in1 edge Bowl. Nice example.
280. G—N Stippled Rays 10" PCE Bowl.
281. Amber—Fenton Peacock Tail rfld Hat. Rare color.
282. G—Fenton Iris Buttermilk Goblet. Nice.
283. P—N Grape & Cable 5" Thumbprint Sauce. Great electric highlights.
284. P—Imp. Heavy Grape rfld Sauce. Super example.
285. (Contemp.) Choice—St. Clair Holly Sprig Tumblers (2 ea). A) Ice Blue and B) Blue.
286. Rootbeer—N Beaded Cable Rose Bowl. Has streaks of slag in base.
287. G w/ Alaskan overlay—N Thin Rib 8" Vase.
288. Teal—Westmoreland 8" Corinth Bowl.
289. A—N Wild Rose Open Edge Candy Dish. Couple chips around loops.
290. A—N Stippled Rays Bon Bon.
291. A—N Lustre Flute Hat.
292. Choice—8 pcs. All have damage.
293. Choice—7 pcs. All have damage.
294. M—Imp. Frosted Block 5" Rose Bowl. Nice.
295. M—Imp. Star & File 2 handled Celery. Super dark.
296. (Contemp.) M—Imp. (IG) Inverted Fan & Feather Candy Dish with Lid.
297. M—Imp. Flute 3 ftd Cream & Sugar. Ft Roughness
298. M—Dugan Vintage Banded Mug.
299. (Contemp.) M—Imp. (IG) Octagon Toothpick Holder.
300. M—Imp. Octagon 8" ruffled Bowl.
301. M—Imp. Frosted Block 8" Bowl.
302. M—Imp. Star Spray 6" Bowl.
303. M—Fenton Scale Band 6" Bowl.
304. A) Marigold—Imp. Star Med. Milk Pitcher. Chip.
B) Marigold—Imp. Grape 9" low ruffled Plate. Chip.
C) Marigold—Swirl Candle Holder (1 only).
D) Marigold—Imp. Candy Dish no/lid. Chipped.
E) (Contemp.) Blue—Imp. (IG) Windmill Tumbler. Nice example. Good color.

Ayers Auction Service

PO Box 320

Tremont, IL 61568-0320

(309) 925-3115



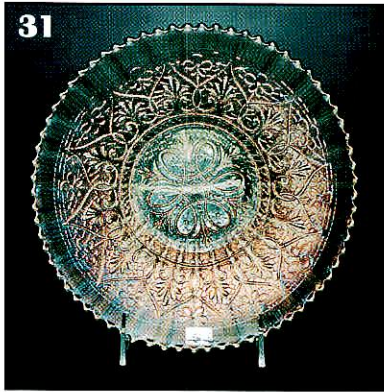
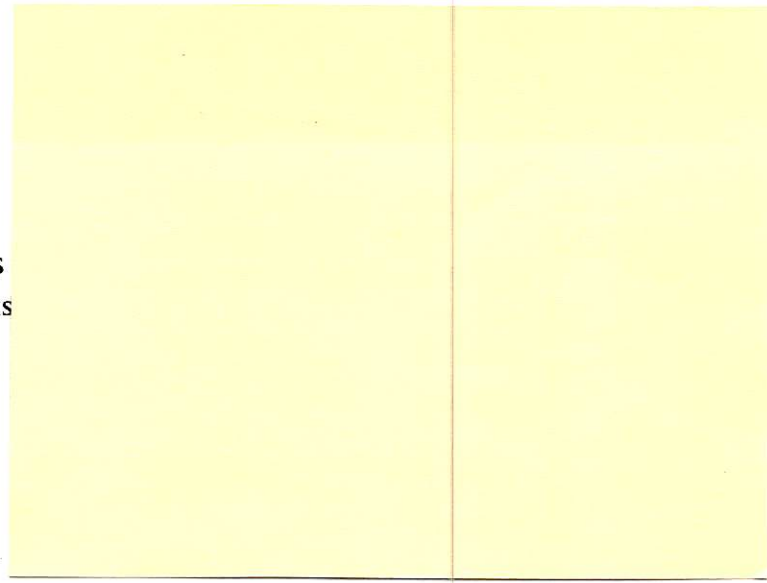
CARNIVAL GLASS AUCTION

Saturday, July 22, 2000

Auction Begins: 9:30 A.M.

Preview: Friday 5:00 - 7:00 P.M. and
Saturday 8:00 - 9:30 A.M.

Holiday Inn, Carlinville, Illinois
Call (800) 322-7546 for Reservations



CARNIVAL GLASS AUCTION

Saturday, July 22, 2000 - 9:30 A.M.

