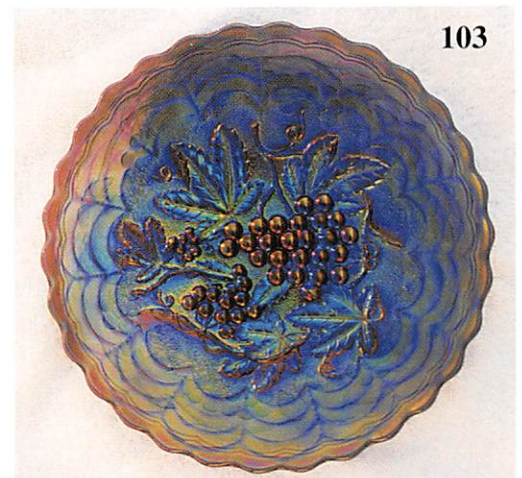
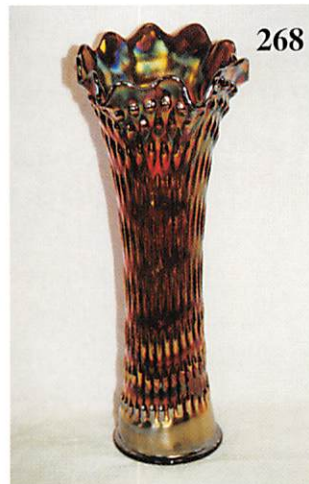
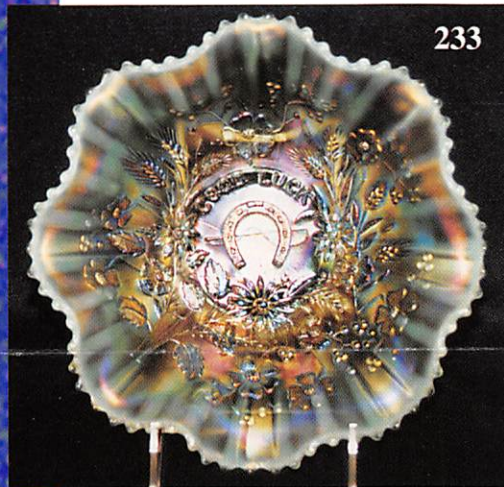


# Northern California Carnival Glass Club Convention

*Featuring the Helen Bell Collection*

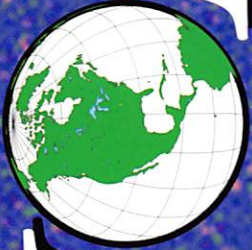
Saturday, June 17, 2000 – 9:30 a.m.



Holiday Inn  
1612 Sisk Road  
(Briggsmore/Carpenter Exit off Hwy 99)  
Modesto, California

*Seeck Auctions*

# AUCTION



*Leading the way in the new millennium*

Jim and Jan Seeck  
515-424-1116

**Northern California Carnival Glass Club Convention Auction**  
**Saturday, June 17, 2000 -- 9:30 am**  
**Holiday Inn - Modesto, California**

We're heading back to that West Coast bunch. Always a great time! Seeck Auctions is very pleased to be selling the Helen Bell collection of Carnival Glass. Helen has collected for many years and has been a long time member of the Northern California Club. There is a wide variety of glass from plates to rosebowls to some really fantastic vases!

The club is back in Modesto at the Holiday Inn. Make your reservations early. The cut-off date for the block of rooms is June 5th. Any questions, call June McCarter and she is always willing to iron out any problems.

**PREVIEW:** Friday evening.

**NCCCC Convention Information:** Contact June McCarter at (209)523-6778.

**RESERVATIONS:** Call 209-521-1612 (ask for Cindy)

**TERMS:** Cash. Checks accepted with proper I.D.

**Sales Tax Will Be Charged.**

**NO BUYER'S PREMIUM.**

\*\*\*\*\*

**ABSENTEE BID POLICY**

1. Write-in bids will be accepted by sending the numbers of the item(s) desired and the amount bid on each to:  
**Seeck Auctions, PO Box 377, Mason City, Iowa 50402.**
2. If known by Auction Company, bids may be done over the telephone. (515)424-1116.
3. You may **email** your bids to us: **seeckauction@willowtree.com** Continue to include the numbers of the item(s) you would like to bid on and amount bid on each, please include your telephone number.
3. There is a \$5 handling charge for each successful bid. Shipping and insurance charges are additional.
4. Bidders will be notified by phone if their bid(s) are successful. This call will be made 1 - 3 days after the auction.
5. Please have all bids in by **Friday, June 9th**. All bids (by mail, phone or **email**) after this date may not be carried out.
6. Please place bids in the following increments: \$1 to \$300 - \$5 increments \$300 up - \$25 increments.
7. **If you do not receive an item that sold for less than your bid, assume we cancelled your bid because the piece of glass had below average color, manufacture problem, damage or was not listed correctly.**
8. To receive price lists send: \$20 -- for this auction and next 7 auctions  
 \$5 -- for only this auction or individual auction (please specify)

Send to the above address. (please allow 2 - 3 weeks delivery for price lists)(**Make checks payable to: Jan Seeck**)

**(All auction results are available on our website for free!)**

**WEBSITE: <http://www.willowtree.com/~seeckauction>**

\*\*\*\*\*

- |   |   |
|---|---|
| <ul style="list-style-type: none"> <li>___ 1. Open Rose ruffled bowl - amber</li> <li>___ 2. Stippled Flower 7" ruffled bowl - peach opal</li> <li>___ 3. Imperial Grape ruffled bowl - marigold - pretty</li> <li>___ 4. Windmill 5" ruffled sauce - marigold</li> <li>___ 5. Holly ruffled hatshape - blue - minor mold roughness on base</li> <li>___ 6. Blackberry spray ruffled hatshape - amber - pretty, scarce color</li> <li>___ 7. Freefold 11 1/2" vase - purple - pretty</li> <li>___ 8. Lined Lattice 6" squatty vase - peach opal - super</li> <li>___ 9. Tartan flat compote - marigold</li> <li>___ 10. Tree Trunk 6" squatty vase - ice green - rare in these squatty shapes &amp; quite pretty</li> <li>___ 11. Tree Trunk 7" squatty vase - white - very pretty, scarce</li> </ul> | <ul style="list-style-type: none"> <li>___ 12. Tree Trunk 7 1/2" squatty vase - blue - electric &amp; fantastic, might be as rare of color as there is</li> <li>___ 13. Tree Trunk 6 1/2" squatty vase - green</li> <li>___ 14. Tree Trunk 6" squatty vase - marigold</li> <li>___ 15. Orange Tree punch bowl &amp; base - blue - super pretty, punch bowl base has crack</li> <li>___ 16. Orange Tree 8 pc punch set - marigold</li> <li>___ 17. Holly ruffled compote - aqua - has marigold overlay</li> <li>___ 18. Holly ruffled compote - blue</li> <li>___ 19. Thistle ftd banana boat - amethyst - super example, quite scarce</li> <li>___ 20. Thistle ftd banana boat - green - also very nice, scarce color</li> <li>___ 21. Thistle ftd banana boat - blue - does have minor pinpoint on top edge</li> </ul> |
|---|---|

- \_\_\_ 22. Thistle ftd banana boat - marigold - nice
- \_\_\_ 23. Heart & Vine 3 in 1 edge bowl - amethyst
- \_\_\_ 24. Stippled Rays 9" ruffled bowl - purple - pretty
- \_\_\_ **25. Tree Trunk 18" funeral vase - blue - super pretty example, an extremely rare & highly desirable vase**
- \_\_\_ **26. Tree Trunk 18" funeral vase - white - extremely rare color & highly desirable, has a burst on base, pretty**
- \_\_\_ 27. Autumn Acorn 3 in 1 edge bowl - amethyst
- \_\_\_ 28. Florentine 8 1/2" candlesticks - celest blue
- \_\_\_ 29. Octagon large size water pitcher - marigold - pretty
- \_\_\_ 30. Octagon large tumblers (3) - marigold - choice, these have a collar base
- \_\_\_ 31. Octagon small size water pitcher - marigold
- \_\_\_ 32. Octagon tumblers (3) - marigold - choice - do not have a collar base
- \_\_\_ **33. Horse Medallion ftd ruffled bowl - amethyst - scarce color & super pretty, a dandy**
- \_\_\_ 34. Horse Medallion ftd ruffled bowl - blue
- \_\_\_ 35. Blossomtime ruffled compote - green - super nice, has chip on base
- \_\_\_ **36. Blossomtime ruffled compote - purple - super nice, scarce**
- \_\_\_ 37. Blossomtime ruffled compote - marigold - dark & super, minor pinpoint on base
- \_\_\_ **38. Imperial Grape 7 pc. wine set - purple - pretty set**
- \_\_\_ 39. Imperial Grape wine bottle w/stopper - smoke - a super nice one, scarce color
- \_\_\_ 40. Imperial Grape 7 pc. wine set - green
- \_\_\_ 41. Imperial Grape 7 pc. wine set - marigold - pretty
- \_\_\_ **42. Fine Cut & Roses rosebowl - aqua opal - chip on foot, large chip on collar base, very scarce color**
- \_\_\_ 43. Fine Cut & Roses rosebowl - marigold
- \_\_\_ 44. Fine Cut & Roses rosebowl - custard w/nutmeg - not carnival
- \_\_\_ 45. N's Flute 10 1/2" midsize vase - green
- \_\_\_ **46. N's Peacock at the Fountain water pitcher - ice blue - very pretty example w/nice color, a top rarity in water pitchers**
- \_\_\_ **47. N's Peacock at the Fountain 5 pc. water set - purple - very pretty set & also highly desirable**
- \_\_\_ 48. Miniature Morning Glory 7" vases (2) - marigold - choice
- \_\_\_ 49. Miniature Morning Glory 5" vase - marigold
- \_\_\_ 50. Miniature Morning Glory 4" vase - marigold - as short as I've seen, neat
- \_\_\_ **51. Farmyard 8 ruffled bowl - purple - rare bowl & highly desirable, has pretty gold highlights, a top piece in the auction**
- \_\_\_ 52. Fenton's Peacock at Urn ruffled compote - marigold - pretty
- \_\_\_ 53. Enameled Cherries & Little flowers bulbous water pitcher - blue
- \_\_\_ 54. Enameled Cherries tumblers (2) - blue - choice
- \_\_\_ 55. Concave Flute rosebowl - marigold - a little more squatty than most
- \_\_\_ **56. Stippled Good Luck ruffled bowl w/ribbed back - blue - electric & beautiful!**
- \_\_\_ 57. Thistle 3 in 1 edge bowl - marigold - nice
- \_\_\_ 58. Ripple 14 1/2" vase - marigold - 3 3/4" base, nice
- \_\_\_ 59. Ripple 12" vase - marigold - 3 3/4" base
- \_\_\_ 60. Ski Star banana boat shaped crimped edge dome ftd bowl - peach opal
- \_\_\_ 61. Bells & Beads ruffled bowl - peach opal
- \_\_\_ **62. Grape & Cable giant ruffled compote - purple - very nice, scarce**
- \_\_\_ 63. Grape & Cable tobacco humidior - purple - minor nick on rim of base, scarce
- \_\_\_ 64. Grape & Cable sweetmeat - purple - nice
- \_\_\_ 65. Fine Rib ftd JIP vases (2) - marigold - choice
- \_\_\_ **66. Stippled Three Fruits 9" plate w/ribbed back - blue - pretty plate, scarce color & highly desirable**
- \_\_\_ 67. Peach water pitcher - blue - cracked
- \_\_\_ 68. Wild Rose ftd nut bowl - emerald green - open lace is pointing straight up, super nice, has internal crack
- \_\_\_ **69. Corinth 9 1/2" vase - blue opal - scarce**
- \_\_\_ 70. Corinth 8" vase - aqua - scarce color
- \_\_\_ 71. Cornith 9" vase - amethyst
- \_\_\_ 72. Cornith 9 1/2" vase - olive green
- \_\_\_ **73. Memphis fruit bowl & base - green - very scarce set, pretty**
- \_\_\_ **74. Memphis 8 pc. fruit bowl set - marigold - bowl is turned up more than others, shaped more like the punch bowl, pretty**
- \_\_\_ 75. Imperial Grape 8" round bowl - purple - pretty
- \_\_\_ 76. Grape & Cable dresser tray - purple - nice example
- \_\_\_ 77. Grape & Cable dresser tray - marigold - nice
- \_\_\_ **78. Mikado round shaped giant compote - blue - super pretty, very scarce & desirable**
- \_\_\_ 79. Octagon wine bottle, stopper & 1 wine - marigold
- \_\_\_ **80. Oriental Poppy 7 pc. tankard water set - purple - very pretty pitcher & highly desirable, a great set**

- \_\_\_ 81. **Oriental Poppy tankard water pitcher - marigold - scarce & nice**
- \_\_\_ 81A Oriental Poppy tumbler - marigold
- \_\_\_ 82. Rococco vase - smoke - a little cutie
- \_\_\_ 83. Grape & Cable candlestick - purple
- \_\_\_ 84. **Peacock at the Fountain 4 pc. table set - marigold - pretty set, has repair on sugar bowl lid, sold as set**
- \_\_\_ 85. Diamond & Column 16" vase - blue
- \_\_\_ 86. Diamond & Column 17" vase - marigold
- \_\_\_ 87. Stippled Good Luck 9" plate w/ribbed back - blue - super pretty, has 3 large chips on face
- \_\_\_ 88. Double Stemmed Rose dome ftd IC shaped bowl - peach opal
- \_\_\_ 89. **Tree Trunk 12" midsize vase - green - scarce, nice**
- \_\_\_ 90. **Tree Trunk 12 1/2" vase - amethyst - scarce**
- \_\_\_ 91. **Tree Trunk 13" midsize vase - marigold - dark & pretty**
- \_\_\_ 92. Four Flowers large ruffled bowl - peach opal
- \_\_\_ 93. Four Flowers ruffled sauces (3) - peach opal - choice
- \_\_\_ 94. Strawberry 9" plate w/plain back - purple - nice
- \_\_\_ 95. **Wreath of Roses 6 pc. punch set w/Persian Medallion interior - amethyst fantastic bowl! base has been cracked & glued together**
- \_\_\_ 96. **Wreath of Roses punch bowl & base w/Vintage interior - green - very scarce & desirable**
- \_\_\_ 97. Grape & Cable hatpin holder - green - super! minor nick on toe
- \_\_\_ 98. Dragon & Lotus ruffled bowl - peach opal - super pretty, has chip on edge
- \_\_\_ 99. Dragon & Lotus ruffled bowl - amber - scarce, nice
- \_\_\_ 100. Dragon & Lotus ruffled bowl - lavender - pretty
- \_\_\_ 101. Dragon & Lotus ruffled bowl - blue - pretty
- \_\_\_ 102. Dragon & Lotus ruffled bowls (2) - marigold - choice
- \_\_\_ 103. **Imperial Grape 9" plate - purple - fantastic electric irid. on a super rare Imperial plate, WOW!**
- \_\_\_ 104. **Imperial Grape 9" plate - amber - fantastic irid. on this very rare plate, maybe more rare than the purple, WOW! A great pair!**
- \_\_\_ 105. Ripple 10" vase - purple - 3 1/4" base, super
- \_\_\_ 106. **N's Bushel Basket - aqua opal - has pretty butterscotch irid.**
- \_\_\_ 107. N's Bushel Basket - green - crack in handle
- \_\_\_ 108. N's Bushel Basket - ice green - scarce, nice
- \_\_\_ 109. N's Bushel Basket - blue - nice
- \_\_\_ 110. N's Bushel Basket - purple - nice
- \_\_\_ 111. N's Bushel Basket - marigold - very nice
- \_\_\_ 112. **Holly ruffled bowl - blue opal - super pretty irid. on this rare bowl, more opal than most**
- \_\_\_ 113. **Holly ruffled bowl - red - has a little amber in the base, definitely red, scarce**
- \_\_\_ 114. Basketweave Open Edge IC shaped small size bowl - ice blue - has crack in web
- \_\_\_ 115. **Blackberry Open Edge 2 sides up basket - white - rare color for these, pretty**
- \_\_\_ 116. Cobblestone ruffled bowl - purple - very pretty, minor mold roughness on edge
- \_\_\_ 117. Grape & Cable 7" ruffled bowl w/BW back - green
- \_\_\_ 118. Holly 2 sides up hatshape - powder blue - has marigold overlay, epoxy on edge
- \_\_\_ 119. **Six Sided candlesticks - purple - extremely rare & super pretty set**
- \_\_\_ 120. Six Sided candlestick - marigold - scarce
- \_\_\_ 121. Horse Medallion ftd nut bowl - vaseline, has no marigold overlay, unusual coloring, very pretty, minor nick on point
- \_\_\_ 122. Horse Medallion ftd nut bowl - amber - scarce color, pretty
- \_\_\_ 122A. **Fenton's Peacock at Urn 8 ruffled bowl - amethyst - super, as pretty as they get!**
- \_\_\_ 123. **Fenton's Peacock at Urn 6 ruffled bowl - white - frosty & super**
- \_\_\_ 124. Fenton's Peacock at Urn 8 ruffled bowl - marigold - dark & super, a beauty
- \_\_\_ 125. **Diamond Points 10" vase - white - pretty, scarce**
- \_\_\_ 126. Diamond Points 10 1/2" vase - smokey blue - odd color, neat
- \_\_\_ 127. Diamond Points 10" vase - purple - pretty
- \_\_\_ 128. Diamond Points 11" vase - green - pretty
- \_\_\_ 129. Puzzle bon bon - purple - electric, a beauty
- \_\_\_ 130. Lotus & Grape ruffled bowl - green
- \_\_\_ 131. Lotus & Grape ruffled bowl - blue
- \_\_\_ 132. Lotus & Grape ruffled bowl - marigold
- \_\_\_ 133. **Fenton's Peacock at Urn 9" plate - blue - electric & super, a dandy**
- \_\_\_ 134. Scroll & Flower panels vase - marigold - marked IG
- \_\_\_ 135. **Peacock at the Fountain fruit bowl - purple - very pretty example & highly desirable**
- \_\_\_ 136. **Peacock at the Fountain fruit bowl - margold - also super pretty & highly desirable**
- \_\_\_ 137. Big Basketweave 10" vase - marigold
- \_\_\_ 138. **Peacocks ruffled bowl w/ribbed back - aqua opal - pastel & pretty, extremely desirable**

- \_\_\_ 139. **Peacocks ruffled bowl w/ribbed back - aqua opal - butterscotch & super, a beauty!**
- \_\_\_ 140. Peacocks ruffled bowl w/ribbed back - marigold - super pretty, few scratches on the face & points
- \_\_\_ 141. April Showers 9 1/2" vase - marigold
- \_\_\_ 142. **Double Stemmed Rose dome ftd bowl - amethyst - has fantastic lavender irid., most people would call this lavender, not amethyst**
- \_\_\_ 143. **Grape & Cable water pitcher - purple - super pretty**
- \_\_\_ 144. **Grape & Cable 7 pc. water set - marigold - pitcher is light but pretty**
- \_\_\_ 145. Diamond & Column 12" vase - green
- \_\_\_ 146. Diamond & Column 12" vase - marigold
- \_\_\_ 147. Blackberry Open Edge CRE hatshape - red - repair on back edge of ruffle
- \_\_\_ 148. **Basketweave Open Edge JIP hatshape - red - scarce**
- \_\_\_ 149. Spiralex vase - peach opal - was never twisted, ribs run straight up & down
- \_\_\_ 150. **Stippled Three Fruits spt ftd ruffled bowl - aqua opal - one knob inside foot is chipped, otherwise nice**
- \_\_\_ 151. **Stippled Three Fruits spt ftd ruffled bowl - blue - electric & fantastic!**
- \_\_\_ 152. Heavy Grape small berry bowl - lavender - pretty
- \_\_\_ 153. **Palm Beach water pitcher - honey amber - very scarce, minor pinpoint on base**
- \_\_\_ 154. Palm Beach tumbler - honey amber - scarce
- \_\_\_ 155. **Poppy Show ruffled bowl - white - scarce, nice**
- \_\_\_ 156. Morning Glory JIP shaped 8" vase - smoke
- \_\_\_ 157. Morning Glory JIP shaped 10" vase - marigold
- \_\_\_ 158. **Horse Medallion 7" plate - marigold - super example**
- \_\_\_ 159. Holly goblet shaped compote - lime green - has marigold overlay
- \_\_\_ 160. **Good Luck 9" plate w/ribbed back - marigold - super pretty, minor spot on horseshoe, otherwise very scarce & outstanding**
- \_\_\_ 161. **Good Luck 9" plate w/BW back - green - very pretty, scarce & highly desirable**
- \_\_\_ 162. Inverted Strawberry 8" round bowl - green - signed Near Cut
- \_\_\_ 163. **Dragon & Lotus IC shaped bowl - amber opal - scarce color for these, not many around**
- \_\_\_ 164. Ripple 10" vase - smoke - 2 3/4" base
- \_\_\_ 165. N's Thin Rib 13 1/2" midsize vase - blue - very scarce color
- \_\_\_ 166. Butterfly & Berry 7 pc. water set - marigold - dark & pretty set
- \_\_\_ 167. Zippered Heart ruffled sauce - purple - pretty
- \_\_\_ 168. **Rose Show ruffled bowl - aqua opal - super pastel irid., minor chip on base**
- \_\_\_ 169. **Rose Show ruffled bowl - marigold - dark & super, minor chip on rose**
- \_\_\_ 170. Three Fruits ruffled bowl w/BW back - marigold
- \_\_\_ 171. Beaded Cable rosebowl - aqua opal - scarce color, has normal nick on foot
- \_\_\_ 172. Beaded Cable rosebowl - marigold - dark & nice
- \_\_\_ 173. Beaded Cable rosebowl - light marigold
- \_\_\_ 174. Beaded Cable rosebowl - custard - not carnival
- \_\_\_ 175. **Hearts & Flowers ruffled bowl w/ribbed back - ice green - super pretty example, a dandy**
- \_\_\_ 176. Grape & Cable cologne bottles (2) - marigold - choice
- \_\_\_ 177. Leaf & Beads rosebowl - amethyst - has rayed interior
- \_\_\_ 178. Leaf & Beads rosebowl - marigold - has rayed interior
- \_\_\_ 179. **Stippled Three Fruits 9" plate w/ribbed back - blue - very scarce & desirable**
- \_\_\_ 180. **Stippled Three Fruits 9" plate w/ribbed back - purple - very pretty- & scarce example**
- \_\_\_ 181. **Stippled Three Fruits 9" plate w/ribbed back - marigold - pastel & pretty**
- \_\_\_ 182. Miniature Morning Glory 6" vase - smokey - pretty w/lavender tint
- \_\_\_ 183. Miniature Morning Glory 6" vase - green
- \_\_\_ 184. **Blueberry 7 pc. water set - blue - very very rare set & nice, a great shape**
- \_\_\_ 185. Little Flowers 3 in 1 edge large bowl - amethyst
- \_\_\_ 186. **Morning Glory 17" funeral vase - green - very hard to find, minor nick on base seam**
- \_\_\_ 187. **Morning Glory 16 1/2" funeral vase - marigold - dark & super from top to bottom**
- \_\_\_ 188. Jewels stretch glass candle bowl - celest blue
- \_\_\_ 189. **Good Luck PCE bowl w/ribbed back - blue - fabulous irid.**
- \_\_\_ 190. Good Luck PCE bowl w/ribbed back - green - also super, lots of pink irid.
- \_\_\_ 191. Good Luck PCE bowl w/ribbed back - marigold - pretty
- \_\_\_ 192. Diamond Points 7 1/2" squatty vase - purple - nice
- \_\_\_ 193. Diamond Points 6" squatty vase - marigold - nice
- \_\_\_ 194. Diamond Lace pitcher - purple - crack around base
- \_\_\_ 195. Diamond Lace tumblers (6) - purple - pretty - choice

- \_\_\_ 196. Quill tumbler - purple - scarce
- \_\_\_ **197. Peacocks 9" plate w/ribbed back - ice green - super example**
- \_\_\_ **198. Peacocks 9" plate w/ribbed back - marigold - super pretty irid.!**
- \_\_\_ **199. Peacocks 9" plate w/plain back - white - frosty & pretty**
- \_\_\_ 200. Beads & Flowers 6" plate - peach opal
- \_\_\_ **201. N's Wide Panel epergne - green - super, does have normal little spots around holes, rare**
- \_\_\_ 202. Wishbone ftd ruffled bowl - purple - a beauty
- \_\_\_ 203. Wishbone ftd ruffled bowl - marigold - deep ruffled
- \_\_\_ **204. Butterfly & Fern water pitcher - green - pretty & scarce**
- \_\_\_ 205. Grape & Cable powder jar - purple
- \_\_\_ 206. Kittens ruffled bowl - marigold
- \_\_\_ **207. Peacock & Grape 3 in 1 edge bowl - lime green opal - scarce color, nice**
- \_\_\_ 208. Orange Tree fruit bowl - blue - pretty, scarce
- \_\_\_ 209. Orange Tree fruit bowl - marigold - nice
- \_\_\_ 210. Flute toothpick - purple - pretty
- \_\_\_ **211. Daisy & Drape vase - aqua opal - butterscotch & fantastic**
- \_\_\_ 212. Strawberry 9" plate w/BW back - purple - pretty
- \_\_\_ 213. Strawberry 9" plates w/BW back (2) - marigold - choice
- \_\_\_ 214. Cut Ovals candlesticks - marigold - scarce
- \_\_\_ **215. Dogwood Sprays 3 in 1 edge dome ftd bowl - purple - electric & fantastic, a beautiful piece of Dugan**
- \_\_\_ 216. Apple Blossom Twigs 9" plate - blue - scarce & pretty
- \_\_\_ 217. Circle Scroll 2 sides up hatshape - marigold
- \_\_\_ **218. Horse Medallion ftd rosebowl - smokey blue - extremely rare color & pretty, a rare rosebowl!**
- \_\_\_ 219. Horse Medallion ftd rosebowl - marigold
- \_\_\_ 220. Three Fruits 9" plate w/plain back - purple
- \_\_\_ 221. Three Fruits 9" plate w/BW back - marigold
- \_\_\_ **222. Stippled Peacocks PCE bowl w/ribbed back - reninger blue - super rare & nice, minor separation in one web**
- \_\_\_ 223. Basketweave Open Edge ruffled basket - aqua
- \_\_\_ 224. Unusual fat squatty 6 1/2" vase - light marigold - similar to Parlor Panels, neat vase
- \_\_\_ **225. Checkerboard water pitcher - amethyst - extremely rare pitcher, very few known, like all that I have seen, has minor nicks in pattern**
- \_\_\_ 226. Ski Star large ruffled bowl - peach opal
- \_\_\_ 227. Ski Star ruffled sauces (6) - peach opal - choice
- \_\_\_ 228. Rustic 16" midsize vase - white - nice
- \_\_\_ **229. Peacock vase - red - pretty irid. & quite scarce, painted red on inside (all are done this way)**
- \_\_\_ 230. Lattice & Points ruffled hatshape - marigold
- \_\_\_ **231. Poppy Show 9" plate - white - highly desirable plate, nice**
- \_\_\_ 232. Stork & Rushes punch bowl & base - marigold - scarce, a dandy
- \_\_\_ **233. Good Luck ruffled bowl w/ribbed back - aqua opal - super pastel & extremely rare**
- \_\_\_ 234. Good Luck ruffled bowl w/BW back - green - very pretty example
- \_\_\_ 235. Good Luck ruffled bowl w/ribbed back - marigold - pumpkin nice!
- \_\_\_ 236. Good Luck ruffled bowl w/ribbed back - marigold - a little lighter than the first one but pretty
- \_\_\_ 237. Grape & Cable banana boat - purple - scarce, a nice one
- \_\_\_ 238. Cut Flowers 10" vase - marigold
- \_\_\_ **239. Fruits & Flowers 7" plate - purple - pretty, scarce**
- \_\_\_ 240. Parlor Panels 5 1/2" squatty vase - marigold - dark & super
- \_\_\_ **241. Singing Birds water pitcher - marigold - nice, scarce**
- \_\_\_ 242. Three Fruits dome ftd ruffled bowl - marigold - dark & nice
- \_\_\_ 243. Ripple 11 1/2" vase - aqua - has burst in side, pretty
- \_\_\_ 244. M'burg Blackberry Wreath 10" IC shaped bowl - green - satin & pretty, scarce in this big size
- \_\_\_ **245. Stippled Grape & Cable Old Rose Distillery - green - super pretty for these, rare & highly desirable**
- \_\_\_ 246. Four Pillars 7" squatty vase w/smooth panels interior - marigold - an unusual pretty vase
- \_\_\_ 247. Blackberry ruffled compote - purple - pretty
- \_\_\_ 248. Blackberry ruffled compote - marigold - pretty
- \_\_\_ 249. Enameled Columbine/Zig Zag water pitcher - green - rare color for these & very nice
- \_\_\_ 250. Acanthus round bowl - purple
- \_\_\_ **251. Dugan Cherries banana boat shaped 3 in 1 edge ftd bowl - purple - electric & fantastic, a real screamer, minor pinpoints on feet edge**
- \_\_\_ 252. Three Fruits spt ftd ruffled bowl - purple - pretty
- \_\_\_ 253. Three Fruits spt ftd ruffled bowl - marigold - nice
- \_\_\_ **254. Stag & Holly large deep ruffled bowl - amber - very scarce color & nice**

- \_\_\_255. Bullseye & Beads 10 1/2" vase - marigold
- \_\_\_256. Cosmos & Cane dome ftd compote - white - very pretty, very scarce
- \_\_\_257. Three Fruits PCE bowl w/BW back - green - has repaired point
- \_\_\_258. Enameled Forget Me Not tumblers (2) - marigold - choice
- \_\_\_259. **Tree Trunk 10" vase - aqua opal - fantastic beautiful vase!**
- \_\_\_260. **Tree Trunk 10" vase - sapphire - a real beauty, quite scarce & desirable**
- \_\_\_261. **Tree Trunk 10 1/2" vase - ice blue - super pretty, scarce**
- \_\_\_262. Tree Trunk 10" vase - green
- \_\_\_263. Apple Blossom Twigs 3 in 1 edge bowl - purple
- \_\_\_264. Grape & Cable PCE bowl w/BW back - purple - pretty
- \_\_\_265. Scales 9" IC shaped bowl - blue opal - super pretty, quite rare, has one point manufacturally pushed down
- \_\_\_266. Acanthus tri-cornered mini compote - marigold - cute, scarce
- \_\_\_267. Peacock at the Fountain & Memphis punch cups - purple - choice
- \_\_\_268. **Rustic 19" funeral vase w/plunger base - amethyst - fantastic irid. on this rare vase!**
- \_\_\_269. Columbia vase - smoke
- \_\_\_270. Grape & Cable 11" ruffled bowl - purple - pretty
- \_\_\_271. **Pony ruffled bowl - ice green - extremely rare color & nice, not many around**
- \_\_\_272. Pony ruffled bowl - marigold
- \_\_\_273. Pony ruffled bowl - purple - not old
- \_\_\_274. Horse Medallion JIP shaped ftd bowl - marigold
- \_\_\_275. Shell & Sand ruffled bowl - purple - nice
- \_\_\_276. **M'burg Seacoast pintray - green - very rare & desirable, pretty**
- \_\_\_277. N's Peacock at Urn IC sauce - purple - chip on bird, chip on base
- \_\_\_278. Acorn Burrs 8 pc. water set - purple - pitcher damaged, tumblers OK
- \_\_\_279. Three Fruits 9" plate w/BW back - purple
- \_\_\_280. Chrysanthemum large size ftd ruffled bowl - blue - chips on edge
- \_\_\_281. **Rose Show 9" plate - marigold - pumpkin, a beautiful rare & desirable plate, as nice as they get!**
- \_\_\_282. Northwood tumblers: Grape & Cable - marigold; Singing Birds (2) - green; Peacock at the Fountain - blue; Raspberry - marigold; Grape Arbor - marigold; ALL SOLD CHOICE
- \_\_\_283. Stretch Glass compote - celest blue
- \_\_\_284. Tumblers: Enameled Magnolia & Drape - marigold; Ten Mums - marigold; Milady - blue; Dugan Peacock at the Fountain - marigold; ALL SOLD CHOICE
- \_\_\_285. Fruit Salad punch cups (10) - marigold - all to go
- \_\_\_286. Tumblers: Four Seventy Four - marigold; Field Flower - green; Imperial Grape - green; Luster Rose - green; Luster Rose - purple (fantastic) - ALL SOLD CHOICE
- \_\_\_287. Singing Birds mug - custard w/nutmeg
- \_\_\_288. New Tumblers: Inverted Fan & Feather by St. Clair - white; Mayflower by Imperial '66 (2) - marigold; Star & Fan by Robert Hanson - amethyst; Inverted Strawberry by Robert Hanson - blue; Wreathed Cherry by Terry Crider - blue opal - ALL SOLD CHOICE
- \_\_\_289. Cvd Candy dish - marigold; Frosted Block rosebowl - white; Vintage Grape hldd sandwich tray - smoke; Swirl 15" chop plate - marigold; Swirl 10" large bowl - marigold - ALL SOLD CHOICE
- \_\_\_290. All Opalescent Glass: Blooms & Blossoms nappy - green; Windflower ruffled bowl - white; Rib Optic 10" vase -green; Formal vase - blue; Ruffles & Rings bowl - green; Thin Rib 7" vase - blue; Concave Flute 6" vase - green; Nautilus whimsy bowl - vaseline; Astro tri-cornered bowl - green; Daisy & Plume bowl - blue; Spool compote - green: ALL OPAL - ALL SOLD CHOICE
- \_\_\_291. Ten Misc. damaged pieces - CHOICE

# Seeck Auctions

P.O. Box 377  
Mason City, Iowa 50402

First Class  
Presort  
U.S. Postage  
**PAID**  
Mpls, MN  
Permit No. 28534

