

BURNS

AUCTION SERVICE

Lincoln Land Carnival Glass Club Convention Auction

Friday & Saturday
June 9-10, 2000

Friday: Preview 3:00 P.M. • Auction 6:00 P.M.
(Lots 1-180)

Saturday: Preview 7:00 A.M. • Auction 9:00 A.M.
(Lots 180-End)

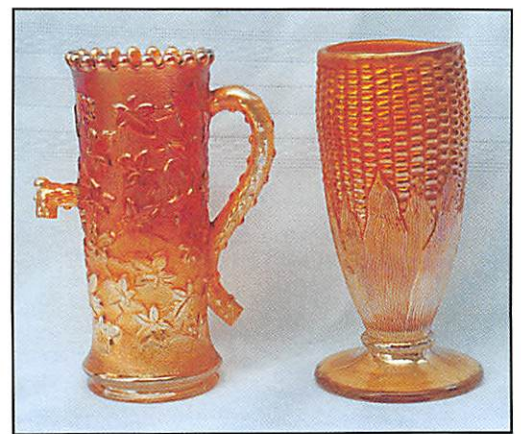
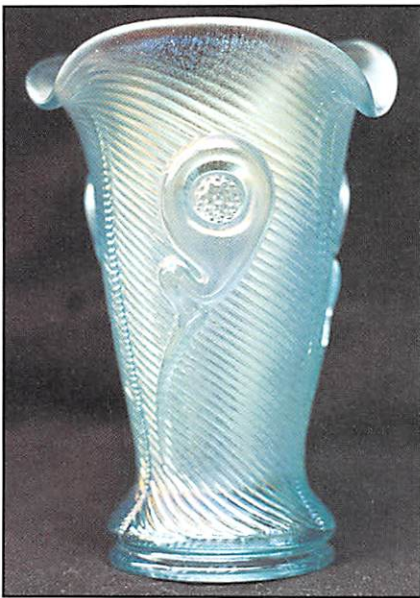
at the

Best Western Midway Motor Lodge

5105 Howell Avenue

Milwaukee, Wisconsin 53207 • (414) 769-2100

Take Airport Exit 318 off I-94



...Same time next year! That's what we said last year, and before you know it...the time for the Lincoln Land Carnival Glass Club Convention is near!

This year's collection of glass is sorta special to me. We have the pleasure of presenting you with the collection of Eleanor Hart (& Linwood) from the New England area.

Eleanor collected for over 30 years and never sold a thing! Her selection of tumblers is one of the best in the country as well as a super group of all types of colors and makers. A sweet selection you won't want to miss!

One note to remember is that Eleanor also worked for Burns Auction Service for over the past decade. She's one great lady and, by the way, if it wasn't for her hubbie, Linwood, ole Tom here wouldn't be in the auction business.

The Best Western Midway Motor Lodge at the Milwaukee Airport will host the event.

The facilities have been used for years and is directly across from the Milwaukee Airport. If driving, use the Airport exit (Exit 318) off I-94. Be sure to make your reservations ASAP by calling the motel direct at (414) 769-2100. Mail bids, etc. due by Tuesday, June 6, 2000.

SPECIAL NOTE: You will notice a number of "A" Lot items. Just before final proof, the host family located some lost items. They are listed and photos should show up on our web site soon.

I wish this collection the best of luck... hope to see ya'll there.

CHECK OUT BURNS AUCTION SERVICE ON THE WEB!

Visit our new Web site for information on upcoming auctions, complete auction listings and photos of auction highlights.

You can e-mail your bids or requests for information.

<http://zeus.kspress.com/woodsland/burnsauction> e-mail: brnzauctsv@aol.com

BURNS AUCTION SERVICE

Tom Burns
P.O. Box 608
Bath, New York 14810
(607) 776-7942

Bill Richards
44 Water St., Poland, OH 44514
(330) 757-2001
FAX (330) 757-4917

Bill Richards, III
2253 Country Lane
Poland, OH 44514
(330) 755-2620

Mail Bids honored under the following conditions.

1. No deposit required, Bidders will take full responsibility to honor any and all bids we execute for them. Payment in full plus postage and handling required after notification and before we ship any item to them.
2. Items are bid on in perfect condition with average or above average iridescence OR as listed in the brochures. Bids will not be carried out when damage on an item has been found during the auction. **PEOPLE PRESENT AT AUCTION ARE RESPONSIBLE FOR FINDING ANY PINHEADS, WEAR, SPOTTINESS, MANUFACTURER'S DEFECTS OR ANY OTHER MINOR FLAWS, ETC.**
3. Successful bidders will be notified by collect call from the auctioneer (**so be sure to include the phone number**).
4. Phone inquiries about the glass or any other questions are welcome.
5. If you have some other person at the auction bidding for you, they must pay for the item before taking it.
6. Any terms or conditions given the day of the auction will supersede any previously published information.
7. Mail, e-mail, fax and phone bids are due by Tuesday, June 6, 2000.

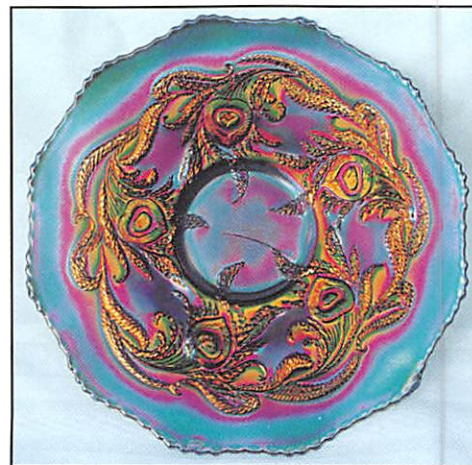
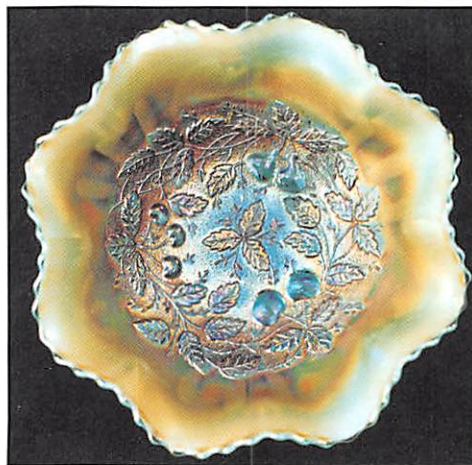
- ____ 1. Signed Crider Fisherman's Mug – Custard/ Mari. (unusual; very desirable for a newer item)
- ____ 2. DeVilbiss Atomizer w/ Bulb – Dk. Mari. (signed; nice color)
- ____ 3. **IMPERIAL WIDE PANEL MINIATURE STEMMED IND. SALT DIP – DK. MARI. (SIGNED W/ IRON CROSS; RARE MINIATURE)**
- ____ 4. Fenton Stretch Era Mayonnaise and Ladle – Mari. (scarce set; unusual)
- ____ 5. **8" TALL FENTON STRETCH CUT OVAL CANDLESTICK – RED (RARE AND EXTREMELY DESIRABLE; WHERE'S THE OTHER ONE?)**
- ____ 6. Fenton Stretch Double Dolphin 4 Sided Compote – Ice Green (scarce and desirable; nice color)
- ____ 7. **FENTON STRETCH STEMMED COVERED PUFF JAR – WISTERIA (VERY SCARCE COLOR; TOUGH TO FIND)**
- ____ 8. Fenton Stretch Stemmed Covered Puff Jar – Celeste Blue (like above item; scarce w/ nice color)
- ____ 8A. Fenton Stretch Stemmed Covered Puff Jar – Vaseline (very scarce item; has nice color and irid.)
- ____ 9. Maker (?) "Hobnail and Rib" Miniature Lamp – Mari. (scarce and unusual miniature)
- ____ 10. **PAIR UNUSUAL FLEUR DE LEI STYLE SALT AND PEPPER SHAKERS – VASELINE (NEVER SEEN THESE BEFORE; TRUE VASELINE AND HAVE TO BE VERY RARE)**

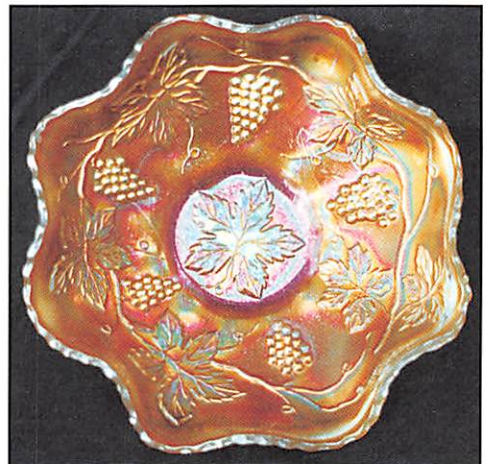
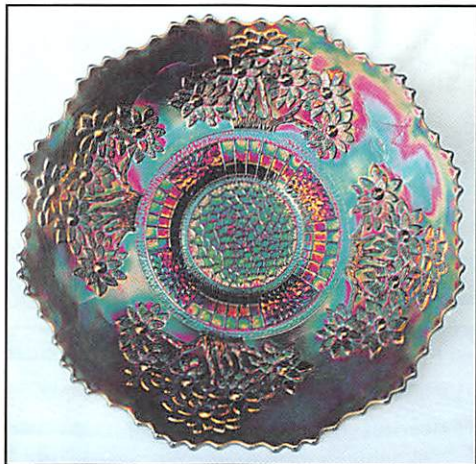
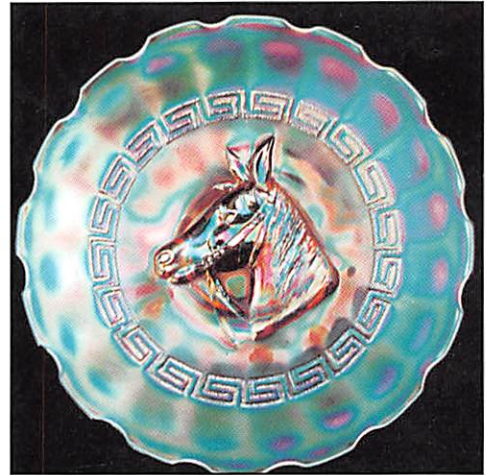
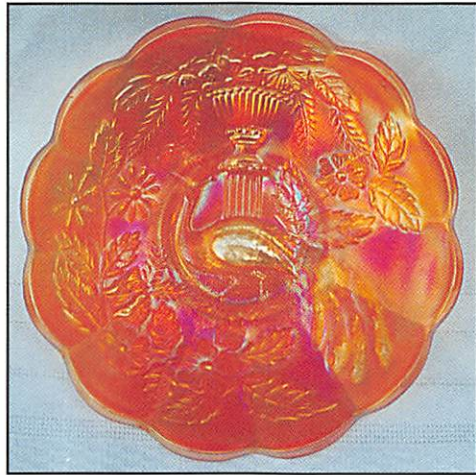
- ____ 10A. **PLAIN PATTERN SPITTOON W/ GROOVED LIP AND POLISHED EDGE – CLEAR/ IRID. (UNUSUAL AND VERY DESIRABLE; SUPER IRID.)**
- ____ 11. **UNUSUAL GEOMETRIC 3 LEAFED HATPIN – DARK (HAVEN'T SEEN THIS PATTERN BEFORE; NEAT!)**
- ____ 12. **5" TALL EUROPEAN LEFT HAND HAND VASE – MARI. (RARE AND DESIRABLE; NICE COLOR AND DETAIL)**
- ____ 13. 5" Tall European Right Hand Hand Vase – Mari. (rare and desirable; has chip on base)
- ____ 14. N Memphis Punch Base Only – White (tough part if ya need it; nice!)
- ____ 15. **N ROSE SHOW FLARED PLATE – EMERALD GREEN (VERY RARE AND EXTREMELY DESIRABLE; SUPER BRIGHT COLOR AND IRID.)**
- ____ 16. **N ROSE SHOW FLAT PLATE – ICE BLUE (ABSOLUTELY BEAUTIFUL EXAMPLE AND FLAT!!)**
- ____ 17. **N ROSE SHOW FLAT PLATE – MARI. (ANOTHER ABSOLUTELY BEAUTIFUL ITEM; ALMOST PASTEL)**
- ____ 18. **N ROSE SHOW RUFFLED BOWL – AQUA OPAL. (RARE AND DESIRABLE; NICE OPAL. AND IRID.)**
- ____ 19. **N ROSE SHOW VARIANT FLAT PLATE – MARI. (RARE AND VERY DESIRABLE ITEM; REALLY TOUGH TO FIND)**

- ____ 20. **N DRAPERY RUFFLED ROSE BOWL – ELEC. BLUE (ABSOLUTELY BEAUTIFUL EXAMPLE; HAS PINHEAD ON EDGE)**
- ____ 20A. **N DRAPERY TUMBLER – WHITE (EXTREMELY RARE; FROSTY AND PERFECT; 1 OF 2 KNOWN)**
- ____ 21. **N DRAPERY RUFFLED ROSE BOWL – AQUA OPAL. (RARE AND DESIRABLE W/ A SUPER PASTEL FINISH)**
- ____ 22. N Drapery Ruffled Rose Bowl – Aqua Opal. (rare; a butterscotch example w/ nice irid.)
- ____ 23. N Drapery Ruffled Rose Bowl – Ice Blue (rare item w/ nice irid.; has chip on the base)
- ____ 24. N Drapery Ruffled Rose Bowl – Amyth. (scarce item w/ nice irid. and color)
- ____ 25. **N HEARTS AND FLOWERS FLARED PLATE W/ PLAIN EXTERIOR – ICE GREEN (VERY RARE ITEM NOT OFTEN SOLD; HAS FLAKE ON COLLAR BASE)**
- ____ 26. **N HEARTS AND FLOWERS STEMMED RUFFLED COMPOTE W/ RIBBED EXT. – BLUE/ ELEC. BLUE (VERY SCARCE; HAS BRIGHT MULTI-COLORED IRID.)**
- ____ 27. N Hearts and Flowers Stemmed Ruffled Compote w/ Ribbed Ext. – Aqua Opal. (scarce w/ a pastel finish; has small flake on base)
- ____ 28. N Hearts and Flowers Stemmed Ruffled Compote w/ Ribbed Ext. – White (scarce; has small flake on base)
- ____ 29. N Nippon Bowl w/ P.C.E. and Ribbed Ext. – Ice Blue (scarce and very attractive; a beaut!)
- ____ 30. **N RIBBED TORNADO VASE – ICE BLUE (EXTREMELY RARE AND VERY, VERY DESIRABLE; PERFECT W/ NICE COLOR AND IRID.)**
- ____ 31. **N CORN VASE W/ PLAIN BASE – DK. MARI. (RARE AND DESIRABLE; NICE DARKER COLOR AND IRID.)**
- ____ 32. N Corn Vase w/ Stalk Base – White (scarce; nice and frosty)
- ____ 33. **N DANDELION HANDLED MUG – AQUA OPAL. (VERY SCARCE AND DESIRABLE; NICE OPAL.)**
- ____ 34. N Dandelion Handled Mug – Purp. (scarce; nice color and irid.)
- ____ 35. **N GRAPE ARBOR TUMBLER – SAPPHIRE (EXTREMELY RARE BASE COLOR; ONLY 1 OR 2 KNOWN)**
- ____ 35A. **N GRAPE ARBOR TUMBLER – BLUE (VERY RARE COLOR FOR THIS PATTERN; NICE IRID.)**
- ____ 36. N Grape Arbor Tumbler – Ice Blue (very scarce; nice color and irid.)
- ____ 37. **N GRAPE ARBOR TUMBLER – PEARLIZED CUSTARD (EXTREMELY RARE ITEM IN THIS COLOR; NICE!)**
- ____ 38. **N GRAPE ARBOR TUMBLER – ICE GREEN (VERY RARE COLOR; NICE IRID. AND BASE COLOR)**
- ____ 39. N Grape Arbor Tumbler – White (scarce; nice frosty finish)
- ____ 40. N Grape Arbor Tumbler – Lt. Amyth. (scarce; quite a nice example; nice!)
- ____ 41. N Grape Arbor Tumbler – Purp. (scarce; nice color and irid.)
- ____ 42. **N GRAPE ARBOR RUFFLED HAT FROM TUMBLER – ICE GREEN (VERY SCARCE ITEM; GREAT COLOR AND IRID.)**
- ____ 43. N Grape Arbor Ruffled Hat From Tumbler – Elec. Blue (rare color for this shape; check in base)
- ____ 44. N Oriental Poppy Tankard Water Pitcher – Amyth. (scarce and desirable item w/ nice gold highlights)
- ____ 45. **N ORIENTAL POPPY TUMBLER W/ RIBBED INT. – LIME ICE GREEN (VERY RARE ITEM IN THIS COLOR; REALLY TOUGH!)**
- ____ 46. **N ORIENTAL POPPY TUMBLER – ICE GREEN (RARE AND DESIRABLE; NICE COLOR AND IRID.)**
- ____ 47. **N ORIENTAL POPPY TUMBLER W/ RIBBED INT. – ICE BLUE (RARE AND DESIRABLE; GREAT COLOR AND IRID.)**
- ____ 48. N Oriental Poppy Tumbler – Ice Blue (very scarce; nice color and irid.)
- ____ 49. **N ORIENTAL POPPY TUMBLER – BLUE (RARE COLOR FOR THIS ITEM; NICE SATINY FINISH)**
- ____ 50. **N POPPY SHOW FLARED PLATE – GREEN (VERY RARE AND EXTREMELY DESIRABLE; NICE AND PERFECT)**
- ____ 51. **N EMBROIDERED MUMS STEMMED HANDLED BON BON W/ BASKETWEAVE EXT. – WHITE (RARE AND VERY DESIRABLE; GREAT SHAPE AND COLOR)**
- ____ 52. N Embroidered Mums Ruffled Bowl w/ Ribbed Ext. – Purp. (scarce; has nice multi-colored irid.)
- ____ 53. **N FRUIT AND FLOWERS STEMMED HANDLED BON BON W/ BASKETWEAVE EXT. – DK. ICE BLUE (RARE AND DESIRABLE; GREAT COLOR AND IRID.)**
- ____ 54. N Fruit and Flowers Stippled Stemmed Handled Bon Bon w/ Basketweave Ext. – Blue (very scarce; has dark satiny irid.)
- ____ 55. **N THREE FRUITS STIPPLED PLATE W/ RIBBED EXT. – AQUA OPAL. (VERY RARE AND VERY DESIRABLE; PASTEL W/ NICE IRID.)**
- ____ 56. **N THREE FRUITS STIPPLED PLATE W/ RIBBED EXT. – TEAL (RARE AND VERY DESIRABLE; TOUGH BASE COLOR W/ NICE IRID.)**
- ____ 57. N Three Fruits Plate w/ Basketweave Ext. – Green (scarce; nice color and irid.)
- ____ 58. N Three Fruits Plate w/ Basketweave Ext. – Purp. (scarce; nice multi-colored satiny irid.)
- ____ 59. N Three Fruits Medallion Stippled Ftd. Ruffled Bowl w/ Meander Ext. – White (scarce and underpriced item; has goldish irid.)
- ____ 60. **N THREE FRUITS MEDALLION STIPPLED FTD. RUFFLED BOWL W/ MEANDER EXT. – AQUA OPAL. (RARE AND DESIRABLE; HAS A TOUCH OF BUTTERSCOTCH)**
- ____ 61. 9-1/2" N Wishbone 8 Ruffled Bowl w/ Basketweave Ext. – Purp. (scarce; has nice satiny irid.)
- ____ 62. N Wishbone Tumbler – Green (scarce item; very attractive color and irid.)
- ____ 63. N Springtime Tumbler – Purp. (scarce; nice satiny finish)
- ____ 64. N Springtime Tumbler – Dk. Mari. (scarce; super color and irid.; nice)
- ____ 65. **N PEACOCKS STIPPLED PLATE W/ RIBBED EXT. AND NARROW BASE – RENNINGER BLUE (RARE AND DESIRABLE; SUPER BASE COLOR; MAY HAVE SPOT ON IRID.)**
- ____ 66. N Peacocks Stippled Plate w/ Ribbed Ext. and narrow base – Blue (rare item; has epoxy on narrow base)
- ____ 67. N Peacocks Stippled Bowl w/ P.C.E. and Ribbed Ext. w/ narrow base – Lime Green (very rare base color; odd tint; has chip on edge)
- ____ 68. **N PEACOCKS PLATE W/ RIBBED EXT. – ELEC. BLUE (RARE AND DESIRABLE; HAS BRIGHT BLUE FINISH)**
- ____ 69. N Peacocks Plate w/ Ribbed Ext. – Purp. (excellent example w/ nice bright irid.)
- ____ 70. **N PEACOCKS PLATE W/ RIBBED EXT. – SMOKEY LAVENDER (EXTREMELY RARE BASE COLOR; CONSIDERED SMOKE)**
- ____ 71. **N PEACOCKS 8 RUFFLED BOWL W/ RIBBED EXT. – SMOKE (BOUGHT AT MY FIRST AUCTION IN 1980; VERY RARE ITEM)**
- ____ 72. N Peacocks Plate w/ Ribbed Ext. – Ice Green (very scarce; nice color and irid.)

- _____ 73. N Peacocks Plate w/ Plain Ext. – Ice Green (very scarce; nice dark color and irid.)
- _____ 74. **N PEACOCKS PLATE W/ RIBBED EXT. – GREEN (RARE AND DESIRABLE; HAS REDDISH HIGHLIGHTS)**
- _____ 75. **N PEACOCKS BOWL W/ P.C.E. AND RIBBED EXT. – GREEN (A BEAUTIFUL EXAMPLE; HAS BRIGHT COLOR AND HIGHLIGHTS)**
- _____ 76. **N PEACOCKS PLATE W/ RIBBED EXT. – WHITE (SCARCE; NICE COLOR AND IRID.)**
- _____ 77. **N PEACOCKS PLATE W/ RIBBED EXT. – DK. MARI. (VERY SCARCE; NICE DARK COLOR AND IRID.)**
- _____ 78. **N PEACOCKS 8 RUFFLED BOWL W/ RIBBED EXT. – AQUA OPAL. (RARE AND DESIRABLE; NICE OPAL AND IRID.)**
- _____ 79. **N PEACOCKS 8 RUFFLED BOWL W/ RIBBED EXT. – LT. AMYTH./ BRONZE (RARE BASE COLOR W/ GREAT COLOR AND IRID.)**
- _____ 80. **10"-10-1/2" N PEACOCK AT THE URN ALL-OVER STIPPLED LG. 8 RUFFLED BOWL – PASTEL MARI./ HONEY AMBER. (RARE SHAPE AND RARE BASE COLOR; REALLY NICE)**
- _____ 80A. **N PEACOCK AT THE URN LG. ICE CREAM BOWL – ICE GREEN (RARE AND VERY DESIRABLE; REALLY NICE COLOR AND IRID.)**
- _____ 80B. **N PEACOCK AT THE URN LG. ICE CREAM BOWL – ICE BLUE (RARE AND DESIRABLE; REALLY NICE COLOR AND IRID.)**
- _____ 80C. **N PEACOCK AT THE URN LG. ICE CREAM BOWL – WHITE (VERY SCARCE AND DESIRABLE; NICE COLOR AND IRID.)**
- _____ 81. **6" N PEACOCK AT THE URN FLARED PLATE – DK. MARI. (WOULD BE CLASSIFIED AS A PLATE; SUPER COLOR AND IRID.)**
- _____ 81A. N Peacock at the Urn All Over Stippled Ind. Ice Cream Bowl – Blue/ Elec. Blue (very scarce variation; nice color and irid.)
- _____ 81B. N Peacock at the Urn Ind. Ice Cream Bowl – Blue/ Elec. Blue (scarce and desirable; nice color and irid.)
- _____ 81C. (2) N Peacock at the Urn Ind. Ice Cream Bowls – Purp. (selling choice; nice color and irid.)
- _____ 81D. N Peacock at the Urn Ind. Ice Cream Bowl – Mari. (nice color and irid.)
- _____ 82. N Peacock at the Fountain 5 Pc. Berry Set – Dk. Mari. (great color and irid.; super set)
- _____ 83. N Peacock at the Fountain Ind. Berry Bowl – Green (very scarce color for this shape)
- _____ 84. N Peacock at the Fountain Ind. Berry Bowl – Ice Blue (scarce if ya need it; nice color and irid.)
- _____ 85. **N PEACOCK AT THE FOUNTAIN COVERED BUTTER DISH – ICE BLUE (VERY RARE ITEM; GREAT COLOR AND IRID.; HAS OPEN BUBBLE ON BASE)**
- _____ 86. N Peacock at the Fountain Covered Sugar Bowl – White (very scarce part; frosty w/ nice detail)
- _____ 87. **N PEACOCK AT THE FOUNTAIN HANDLED CREAMER – BLUE (RARE BASE COLOR W/ SUPER IRID.; NICE)**
- _____ 88. N Peacock at the Fountain 4 Pc. Table Set – Dk. Mari. (very scarce set; dark and well matched)
- _____ 89. **N PEACOCK AT THE FOUNTAIN STEMMED RUFFLED COMPOTE W/ PLAIN EXT. – ICE BLUE (RARE AND VERY DESIRABLE; SUPER ITEM; HAS SMALL CHIP ON BASE)**
- _____ 90. **N PEACOCK AT THE FOUNTAIN TUMBLER – GREEN (RARE AND DESIRABLE; GREAT COLOR AND IRID.)**
- _____ 90A. **N PEACOCK AT THE FOUNTAIN TUMBLER – RENNINGER BLUE (EXTREMELY RARE BASE COLOR; VERY NICE ITEM)**
- _____ 91. **N PEACOCK AT THE FOUNTAIN TUMBLER – AMYTH. W/ SLAG EFFECT (RARE EFFECT AND REALLY UNUSUAL; A TOUGHIE)**
- _____ 92. **N PEACOCK AT THE FOUNTAIN TUMBLER – ICE BLUE (RARE AND NICE; DARK BASE COLOR W/ GREAT IRID.)**
- _____ 93. N Peacock at the Fountain Tumbler – White (very scarce; nice and frosty)
- _____ 94. (2) N Peacock at the Fountain Tumblers – Elec. Blue (super examples; selling choice)
- _____ 95. N Peacock at the Fountain Tumbler – Dk. Mari. (super color and super irid.; wow!)
- _____ 96. **N SINGING BIRDS HANDLED MUG – HOREHOUND (RARE BASE COLOR; UNUSUAL AND NICE)**
- _____ 97. **N SINGING BIRDS HANDLED MUG – LAVENDER (RARE BASE COLOR; GREAT IRID.)**
- _____ 98. N Singing Birds Handled Mug – Blue (scarce; nice color and irid.)
- _____ 99. **N SINGING BIRD 7 PC. WATER SET – GREEN (RARE AND DESIRABLE SET; ATTRACTIVE)**
- _____ 100. **N IVY TOWN PUMP – DK. MARI. (RARE AND EXTREMELY DESIRABLE ITEM; NICE COLOR TO THE BOTTOM)**
- _____ 101. **N BLOSSOMTIME STEMMED 6 RUFFLED COMPOTE – DK. MARI. (SUPER EXAMPLE W/ DARK, BRIGHT COLOR AND IRID.)**
- _____ 102. N Octet Domed 8 Ruffled Bowl – Mari. (very scarce pattern in this color)
- _____ 103. **N ACORN BURR 4 PC. TABLE SET – MARI. (RARE SET ANYMORE; WELL MATCHED AND PERFECT)**
- _____ 104. **N SPRINGTIME COVERED BUTTER DISH – PURP. (RARE AND DESIRABLE; PERFECT W/ GREAT COLOR AND IRID.)**
- _____ 105. **N G & C COVERED SWEETMEAT COMPOTE – DK. MARI. (VERY RARE AND VERY DESIRABLE; GREAT COLOR; HAS SMALL CHIP ON BASE)**
- _____ 106. **N G & C 2 PC. CANDLE LAMP – MARI. (RARE AND DESIRABLE; SATINY AND WELL-MATCHED)**
- _____ 107. **N G & C COVERED HUMIDOR – PURP. (A BEAUTIFUL EXAMPLE; SCARCE ITEM; HAS ROUGHNESS ON RIM)**
- _____ 108. **9" N G & C VARIANT STIPPLED PLATE W/ RIBBED EXT. – BLUE (RARE AND DESIRABLE; HAS SATINY IRID.; TOUGH)**
- _____ 109. 8-1/2"-9" N G & C Variant Stippled Ruffled Bowl w/ Ribbed Ext. – Purp. (very scarce item w/ multi-colored irid.)
- _____ 110. **9" N G & C STIPPLED FLARED PLATE W/ RIBBED EXT. – GREEN (RARE AND DESIRABLE VARIATION; NICE COLOR)**
- _____ 111. **N G & C STIPPLED TUMBLER – PURP. (VERY RARE ITEM W/ BRIGHT RED AND BLUE IRID.)**
- _____ 111A. **N G & C STIPPLED TUMBLER – DK. MARI. (SUPER, SUPER DARK EXAMPLE; RARE)**
- _____ 112. N G & C Ftd. Hatpin Holder – Green (very scarce; has a satiny finish)
- _____ 113. **N RASPBERRY TUMBLER – LT. ICE BLUE (RARE ITEM; COULD BE DARKER, BUT GO FIND ONE)**
- _____ 114. **N DAISY AND PLUME FTD. 8 RUFFLED CANDY DISH W/ BERRY INTERIOR – ICE BLUE (VERY SCARCE; NICE DARK COLOR AND IRID.; FEET IN PRETTY GOOD SHAPE)**
- _____ 115. N Fine Cut and Roses Ftd. 6 Ruffled Candy Dish w/ Fancy Int. – Aqua Opal. (rare pastel example; has chip on foot)
- _____ 116. N Fine Cut and Roses Ftd. 6 Ruffled Candy Dish w/ Fancy Int. – Purp. (silvery outside but absolutely super inside)

- _____ 116A. **N WATERLILY AND CATTAIL TUMBLER ETCHED S.E. CAMERY, 1914 – BLUE/ ELEC. BLUE (EXTREMELY RARE COLOR FOR THIS ITEM; SUPER COLOR AND IRID.)**
- _____ 117. **N WISTERIA TUMBLER – ICE BLUE (RARE ITEM HASN'T BEEN SOLD TOO OFTEN LATELY)**
- _____ 118. **N WISTERIA TUMBLER – WHITE (ANOTHER RARE EXAMPLE; NICE FROSTY FINISH)**
- _____ 119. N Leaf and Beads Ftd. Flared Nut Bowl – Blue (actually quite a rare item; neat!)
- _____ 120. **N LEAF AND BEADS FTD. ROSE BOWL W/ PLAIN TOP – PEARLIZED CUSTARD W/ NUTMEG (RARE ITEM; PERFECT W/ GREAT PEARLIZED IRID. AND NUTMEG DECORATION)**
- _____ 121. N Leaf and Beads Ftd. Rose Bowl – Aqua Opal. (popular item; nice color and opal.)
- _____ 122. N Leaf and Beads Ftd. Rose Bowl – Purp. (nice satiny finish)
- _____ 123. N Leaf and Beads Ftd. Rose Bowl – Blue (nice; a dark satiny finish)
- _____ 124. N Leaf and Beads Ftd. Rose Bowl w/ Floral Int. – Green (scarce; nice satiny finish)
- _____ 125. **N GREEK KEY FLARED PLATE W/ BASKETWEAVE EXT. – GREEN (VERY SCARCE TO FIND ANYMORE; SATINY FINISH)**
- _____ 126. N Greek Key Tumbler – Green (very scarce and attractive item)
- _____ 127. N Greek Key Tumbler – Purp. (very scarce and attractive item)
- _____ 128. **N INTERIOR POINSETTIA TUMBLER – DK. MARI. (NOT MANY KNOW HOW RARE THESE ARE; A BEAUTY!)**
- _____ 129. N Strawberry Plate w/ Basketweave Ext. – Purp. (scarce item; has a bright satiny finish)
- _____ 130. **N PEACH TUMBLER – ELEC. BLUE (SUPER EXAMPLE; HAS BRIGHT BLUE FINISH)**
- _____ 131. N Peach Covered Sugar Bowl – White (very scarce part to find; fair gold)
- _____ 132. N Peach Spooner – White (very scarce part; fair gold)
- _____ 133. **N GRAPE AND GOTHIC ARCHES 4 PC. TABLE SET – BLUE (TALK ABOUT RARE; TRY TO PUT ONE OF THESE TOGETHER; IRID. VARIES)**
- _____ 134. **N GRAPE AND GOTHIC ARCHES 7 PC. WATER SET – BLUE (RARE SET; HAVEN'T SOLD MANY LATELY)**
- _____ 135. **N GOOD LUCK PLATE W/ BASKETWEAVE EXT. – HOREHOUND (EXCELLENT SATINY EXAMPLE OF A POPULAR ITEM IN A RARE COLOR)**
- _____ 136. **N GOOD LUCK FLARED PLATE W/ BASKETWEAVE EXT. – PURP. (ONE OF THE BETTER EXAMPLES WE'VE SOLD)**
- _____ 137. **N GOOD LUCK BOWL W/ P.C.E. AND RIBBED EXT. – ELEC. BLUE (SUPER COLOR AND IRID.; BRIGHT BLUE HIGHLIGHTS)**
- _____ 138. N Good Luck Bowl w/ P.C.E. and Ribbed Ext. – Dk. Mari. (nice color and irid.; really nice)
- _____ 139. **N GOOD LUCK STIPPLED BOWL W/ P.C.E. AND RIBBED EXT. – MARI. (RARE VARIATION; TOUGH TO FIND)**
- _____ 140. **N GOOD LUCK 8 RUFFLED BOWL W/ RIBBED EXT. – ELEC. BLUE (ANOTHER ATTRACTIVE ITEM W/ BLUE HIGHLIGHTS)**
- _____ 141. N Good Luck 8 Ruffled Bowl w/ Basketweave Ext. – Green (excellent satiny example; nice)
- _____ 142. **N EIGHT SIDED HANDLED BUSHEL BASKET – GREEN (VERY SCARCE; HAS SUPER INTERIOR IRID.)**
- _____ 143. N Eight Sided Handled Bushel Basket – White (scarce and frosty)
- _____ 144. N Round Handled Bushel Basket – Aqua Opal. (average example w/ butterscotch overlay)
- _____ 145. N Round Handled Bushel Basket – Green (scarce; has 2 small flakes on edge)
- _____ 146. N Round Handled Bushel Basket – Ice Green (scarce; nice color and irid.)
- _____ 147. **N ROUND HANDLED BUSHEL BASKET – WHITE (SCARCE SHAPE; NICE COLOR AND IRID.)**
- _____ 148. N Round Handled Bushel Basket – Lavender/ Amyth. (scarce base color; has pinhead)
- _____ 149. N Round Handled Bushel Basket – Blue (scarce; satiny)
- _____ 150. N Round Handled Bushel Basket – Purp. (nice color and irid.)
- _____ 151. N Round Handled Bushel Basket – Mari. (nice average color)
- _____ 152. **N DANDELION TUMBLER – ICE BLUE (VERY SCARCE AND VERY DESIRABLE)**
- _____ 153. N Dandelion Tumbler – Green (scarce; nice color and irid.)
- _____ 154. **N DANDELION TUMBLER – SMOKEY LAVENDER W/ STREAKS (VERY SCARCE ITEM; UNUSUAL; NICE IRID.)**
- _____ 155. **N BEADED CABLE FTD. RUFFLED ROSE BOWL – ICE GREEN (RARE ITEM THAT HASN'T BEEN SOLD LATELY; NICE!)**
- _____ 156. N Beaded Cable Ftd. Ruffled Rose Bowl – Purp. (really nice color and irid.)
- _____ 157. N Beaded Cable Ftd. Ruffled Rose Bowl – Dk. Mari. (super color and irid.)
- _____ 158. N Beaded Cable Ftd. Ruffled Rose Bowl – Pastel Mari. (scarce; nice irid.)
- _____ 159. 9-1/2" M'burg Rays and Ribbons Bowl w/ 3 in 1 Edge – Amyth. (radium and nice)
- _____ 160. **M'BURG MORNING GLORY TUMBLER – GREEN (SUPER RADIUM AND SUPER RARE; PERFECT)**
- _____ 160A. **M'BURG HOBSTAR AND FEATHER TUMBLER – HONEY AMBER/ CLAMBROTH (ONLY KNOWN EXAMPLE; SUPER RARE)**
- _____ 161. **M'BURG MULTI-FRUITS AND FLOWERS TUMBLER – DK. MARI. (SUPER RARE; REALLY, REALLY DARK; PERFECT!)**
- _____ 162. **M'BURG MULTI-FRUITS AND FLOWERS TUMBLER – GREEN (ANOTHER RARE ITEM; GREAT COLOR AND IRID.)**
- _____ 163. M'burg Hearts and Feathers Tumbler – Green (super green and yellow irid.; really nice)
- _____ 164. M'burg Hearts and Feathers Tumbler – Dk. Mari. (great color)
- _____ 165. **(2) M'BURG HOBNAIL TUMBLERS – BLUE (SELLING CHOICE; SILVERY EXAMPLE IS PERFECT; PRETTY EXAMPLE HAS CHIP ON ONE HOB)**
- _____ 166. **M'BURG HOBNAIL TUMBLER – MARI. (PROBABLY ONE OF THE TOUGHEST TUMBLERS TO FIND)**
- _____ 166A. **M'BURG HOBNAIL TUMBLER – AMYTH. (PERFECT W/ EXCELLENT COLOR AND IRID.; REALLY NICE)**
- _____ 167. **M'BURG PERFECTION TUMBLER – MARI. (RARE COLOR FOR THIS ITEM; NICE AVERAGE COLOR)**
- _____ 168. M'burg Perfection Tumbler – Amyth. (rare; has light silvery irid.)
- _____ 169. M'burg Diamond Handled Water Pitcher – Green (nice color and irid.)
- _____ 170. **9-1/2"-10" M'BURG ROSILAND LG. 6 RUFFLED BOWL – AQUA (HAS AQUA TINT; MEANT TO BE GREEN BUT NOT!)**
- _____ 171. 9-1/2"-10" M'burg Peacock at the Urn Lg. Ice Cream Bowl – Mari. (satiny; has bee, no beading; nice irid.)





- _____ 172. 7-1/2" M'BURG PEACOCK "SHOTGUN" BOWL W/ 3 IN 1 EDGE – GREEN (RADIUM AND RARE; RARE SIZE W/GREAT COLOR AND IRID.)
- _____ 173. 5" M'BURG PEACOCK IND. BERRY BOWL W/ 3 IN 1 EDGE – AMYTH. (RADIUM AND SUPER; HAS NO BEE AND NO BEADING; RARE SIZE AND SHAPE; HAS SOME MANUF. PEELING ON EDGE)
- _____ 173A. 6" M'BURG PEACOCK IND. ICE CREAM BOWLS – GREEN (RADIUM AND RARE; HAS NO BEADING AND NO BEE; VERY ATTRACTIVE)
- _____ 174. 5" M'burg Peacock Ind. Deep Flared Berry Bowl – Mari. (very scarce; radium, has no bee and no beading)
- _____ 175. M'BURG MULTI-FRUITS AND FLOWERS STEMMED SHERBET – GREEN (A RARE, CUTE ITEM W/ NICE RADIUM IRID.)
- _____ 176. M'BURG STRAWBERRY WREATH STEMMED 6 RUFFLED COMPOTE – GREEN (SUPER RADIUM IRID.; TOUGH BASE COLOR)
- _____ 177. M'BURG LEAF AND LITTLE FLOWERS STEMMED SQUATTY 6 RUFFLED COMPOTE – GREEN (SUPER RADIUM FINISH; RARE SHAPE AND SIZE!)
- _____ 178. M'BURG LEAF AND LITTLE FLOWERS STEMMED 6 RUFFLED COMPOTE – AMYTH. (RADIUM AND VERY DESIRABLE; NICE)
- _____ 179. M'BURG LEAF AND LITTLE FLOWERS STEMMED 6 RUFFLED COMPOTE – MARI. (RADIUM AND VERY SCARCE; NICE)
- _____ 180. 5-1/2" M'burg Holly Sprig Round Sauce w/ Odd Crimped Edge – Mari. (radium and a very desirable shape)
- START OF SECOND SESSION**
- _____ 181. M'BURG HANGING CHERRIES 4 PC. TABLE SET – GREEN (TOUGH SET TO FIND COMPLETE; SATINY IRID.)
- _____ 182. M'burg Hanging Cherries Handled Spooner – Green (satiny; has small chip)
- _____ 182A. M'burg Hanging Cherries Tumbler w/ Manuf. Ground Base – Green (very scarce and desirable; has an attractive gold irid.)
- _____ 182B. M'burg Hanging Cherries Tumbler w/ Manuf. Ground Base – Mari. (very scarce and desirable; nice color and irid.)
- _____ 183. M'burg Trout and Fly Bowl w/ 3 in 1 Edge – Mari. (scarce; satiny; nice color)
- _____ 184. Cambridge Near Cut Handled Mug "Souvenir of Welsford, N.S." – Dk. Mari. (dark and nice; pretty scarce)
- _____ 185. CAMBRIDGE INVERTED FEATHER TUMBLER – AMYTH. (VERY RARE AND VERY DESIRABLE; TOUGH!)
- _____ 185A. CAMBRIDGE INVERTED FEATHER TUMBLER – GREEN (VERY RARE AND VERY DESIRABLE; GREAT COLOR AND IRID.; PERFECT)
- _____ 186. CAMBRIDGE INVERTED THISTLE TUMBLER – DK. MARI. (SUPER DARK EXAMPLE; GREAT COLOR AND IRID.)
- _____ 187. CAMBRIDGE DOUBLE STAR TUMBLER – AMYTH. (RARE COLOR FOR THIS ITEM; REALLY TOUGH)
- _____ 188. CAMBRIDGE DOUBLE STAR TUMBLER – LT. MARI. (LIGHT IN COLOR BUT STILL A RARE ONE!)
- _____ 189. Cambridge Inverted Strawberry Covered Powder Jar – Mari. (very scarce and attractive item)
- _____ 190. CAMBRIDGE INVERTED STRAWBERRY SPITTOON – GREEN (RARE AND ALWAYS DESIRABLE; NICE)
- _____ 191. CAMBRIDGE BUZZ SAW SMALL SIZED CRUET AND STOPPER – GREEN (RARE ITEM; VERY ATTRACTIVE AND PERFECT)
- _____ 192. Cambridge Inverted Feather Handled Covered Cracker Jar – Green (scarce; nice color)
- _____ 193. Imperial Ribbed Optic 2 Pc. Tumble Up – Smoke (super irid.)
- _____ 194. Imperial Octagon Stemmed Round Compote – Dk. Mari. (scarce item; nice dark color)
- _____ 195. IMPERIAL CHATELINE TUMBLER – PURP. (VERY SCARCE; HAS SUPER IRID.)
- _____ 195A. IMPERIAL CONE AND TEE TUMBLER – PURP. (ABSOLUTELY FANTASTIC ITEM; PERFECT AND SUPER RARE)
- _____ 196. Imperial Tiger Lily Tumbler – Purp. (scarce; super bright irid.)
- _____ 197. Imperial Tiger Lily Tumbler – Lavender (odd light base color; super irid.)
- _____ 198. Imperial Windmill Tumbler – Purp. (fantastic example; super blue highlights)
- _____ 199. Imperial Windmill Tumbler – Lavender (another unusual light tint; nice irid.)
- _____ 200. IMPERIAL ROBIN TUMBLER – SMOKE (VERY RARE COLOR; SUPER DETAIL AND IRID.)
- _____ 201. Imperial Fashion Tumbler – Smoke (rare color; nice irid.)
- _____ 202. IMPERIAL FIELD FLOWER TUMBLER – VIOLET BLUE (RARE BASE COLOR; TOUGH TO FIND)
- _____ 203. Imperial Field Flower Tumbler – Purp. (very scarce; nice color and irid.)
- _____ 204. Imperial Lustre Rose Tumbler – Purp. (super irid.; red and blue irid.)
- _____ 205. IMPERIAL GRAPE TUMBLER – EMERALD GREEN (VERY RARE COLOR; BRIGHT MULTI-COLORED IRID.)
- _____ 206. IMPERIAL GRAPE TUMBLER – AMBER (RARE W/ SUPER COLOR AND IRID.; NICE)
- _____ 207. Imperial Octagon Lg. Sized Tumbler – Purp. (very scarce; nice multi-colored irid.)
- _____ 208. Imperial Diamond Lace Tumbler – Lavender (very odd tint for this pattern; unusual)
- _____ 209. Imperial 474 Tumbler – Aqua (rare base color; odd tint)
- _____ 210. Imperial Octagon Lg. Sized Tumbler – Aqua (rare base color for this item; very unusual)
- _____ 211. Imperial Flute (9 Panels) Tumblers – Aqua (rare; nice color and irid.)
- _____ 212. Imperial Flute (6 Panels) Tumbler w/ Manuf. Ground Base – Purp. (rare w/ nice color and irid.; has small chip)
- _____ 213. Imperial Flute (6 Panels) Tall Tumbler – Purp. (very scarce; nice color and irid.)
- _____ 214. 4-1/2"-5" Tall Imperial Flute Tankard Tumbler – Dk. Mari. (great color; unusual size; impressive item)
- _____ 215. (2) IMPERIAL LOGANBERRY VASES – AMBER (SUPER PAIR; SELLING CHOICE; BEAUTIFUL)
- _____ 216. 4" Tall Imperial Interior Wide Panel Squatty 8 Ruffled Vase – Mari./ Milk Glass (very scarce and desirable size; nice)
- _____ 217. Imperial Tiger Lily 6 Pc. Water Set – Green (scarce set; nice color)
- _____ 218. Imperial Diamond Lace Handled Water Pitcher – Purp. (super irid.; attractive)
- _____ 219. Imperial Embossed Scroll Stemmed 8 Ruffled Compote – Purp. (super irid.)
- _____ 220. IMPERIAL HOBSTAR 4 PC. TABLE SET – PURP. (VERY RARE SET; TOUGH TO FIND; NICE HIGHLIGHTS)
- _____ 220A. U.S. GLASS BIG BUTTERFLY TUMBLER – OLIVE GREEN (EXTREMELY RARE ITEM; SELDOM SOLD; PERFECT AND ATTRACTIVE)
- _____ 221. U.S. GLASS PRINCESS LAMP – PURP. (RARE AND UNDERPRICED; HASN'T SOLD LATELY)

- _____ 222. Australian Butterfly and Walrath Stemmed Doughnut Tray – Purp. (scarce; nice color and detail)
- _____ 223. 5" Australian Kookaburra 12 Ruffled Sauce – Purp. (scarce; nice irid.)
- _____ **224. EUROPEAN DRAPERY VARIANT TUMBLER – DK. MARI. (SUPER DARK COLOR AND IRID.; REALLY NICE)**
- _____ 225. European Thistle Tumbler – Blue (not sure of pattern name; rare and unusual)
- _____ **226. EUROPEAN OMNIBUS TUMBLER – OLIVE GREEN (RARE BASE COLOR; PRETTY ATTRACTIVE)**
- _____ **227. EUROPEAN OMNIBUS TUMBLER – MARI. (RARE ITEM; TOUGH TO FIND)**
- _____ 228. (2) European Tumblers – Mari. (? patterns; unusual; tough items)
- _____ 229. European Ranger Tumbler – Dk. Mari. (very scarce; nice tumbler)
- _____ **230. EUROPEAN RISING SUN TUMBLER – DK. MARI. (VERY SCARCE; NICE COLOR AND IRID.)**
- _____ 231. Westmoreland File and Fan Stemmed Doughnut Stand – Blue Opal. (scarce shape in a very desirable color)
- _____ **232. WESTMORELAND CHECKERBOARD TUMBLER – AMYTH. (RARE ITEM; HAS TYPICAL SILVERY IRID.)**
- _____ **232A. WESTMORELAND CHECKERBOARD TUMBLER – DK. MARI. (RARE AND DESIRABLE; HAS NICE COLOR AND IRID.)**
- _____ 233. U.S. Glass Cosmos and Cane Tumbler – White (very scarce; frosty; very attractive)
- _____ 234. U.S. Glass Palm Beach Tumbler – White (very scarce; frosty and nice)
- _____ **235. (MAKER?) CUT COSMOS TUMBLER – MARI. (RARE ITEM; REALLY NICE EXAMPLE)**
- _____ 236. Phoenix Lacy Dewdrop Tumbler – Mari./ Milk Glass (very scarce item; tough to find)
- _____ 237. Dugan Cherry Wreath Tumbler – Dk. Mari. (absolutely super example; really dark)
- _____ 238. Dugan Daisy and Lattice Tumbler – Blue (very scarce base color for this pattern; nice)
- _____ 239. Dugan Grapevine Lattice Tumbler – White (very scarce item in this color; super)
- _____ **240. 4" TALL DUGAN BEAUTY BUD VASE W/TIGHT CRIMPED EDGE – PURP. (RARE AND DESIRABLE; HAS BEAUTIFUL INTERIOR IRID.)**
- _____ 241. 9-1/2" Dugan Flowers and Frames Domed 10 Ruffled Bowl – Purp. (very scarce; has bright multi-colored irid.)
- _____ **242. DUGAN FISHNET EPERGNE W/ 3 IN 1 EDGE – AMYTH. (SCARCE IN THIS COLOR; PERFECT W/ NICE SATINY IRID.)**
- _____ 243. Dugan Nautilus Novelty Open Sugar, Signed in Script – Purp. (super example w/ excellent irid.; really nice)
- _____ 244. 12" Tall Dugan Big Basketweave Swung Vase – Blue (very scarce base color w/ bright satiny finish)
- _____ **245. 9" DUGAN PONY PLATE – MARI. (EXTREMELY RARE ITEM; A BEAUTIFUL EXAMPLE AND ONE OF THE VERY FEW OLD ONES)**
- _____ 246. Dugan Pony 10 Ruffled Bowl – Purp. (very scarce; nice shape and satiny irid.)
- _____ 247. Dugan Single Flower (Framed) Crimped Edge Handgrip Bowl – Purp. (I do not recall seeing too many in a vivid color)
- _____ **248. DUGAN FISHERMAN'S HANDLED MUG – DK. MARI. (HAS TO ONE OF THE FINEST EXAMPLES I'VE SEEN)**
- _____ 249. Dugan Single Flower (Framed) Bowl w/ 3 in 1 Edge and Enameled Decoration – P. Opal. (attractive w/ decoration; perfect)
- _____ **250. DUGAN BEADED SHELL HANDLED MUG – WHITE (VERY RARE AND VERY UNDERPRICED; NICE ITEM)**
- _____ 251. Dugan Dahlia Tumbler w/ Blue Stain Decoration – White (rare; nice decoration and frosty finish)
- _____ 252. Dugan Dahlia Tumbler w/ Gold Decoration – White (rare; frosty and has pretty nice gold decoration)
- _____ 253. 5"-5-1/2" Dugan Petal and Fan Low 8 Ruffled Bowl – Purp. (super bright irid.; very attractive)
- _____ 254. 5" Dugan Ski Star 6 Ruffled Sauce – Amyth. (scarce color and size)
- _____ **255. DUGAN QUILL TUMBLER – PURP. (RARE; TOUGH TO FIND; NICE IRID.)**
- _____ **256. DUGAN QUILL TUMBLER – MARI. (VERY SCARCE; NICE COLOR AND IRID.)**
- _____ 257. Dugan Heavy Iris Tumbler – White (very scarce; frosty w/ great irid.)
- _____ **258. DUGAN HEAVY IRIS TUMBLER – HOREHOUND (VERY RARE BASE COLOR; HAS SUPER IRID.)**
- _____ 259. Dugan Heavy Iris Tumbler – Purp. (super, super irid.; really nice)
- _____ 260. 10"-11" Dugan Petal and Fan Lg. 8 Ruffled Bowl w/ Jeweled Heart Ext. – White (very scarce item; frosty and impressive)
- _____ **261. DUGAN WINDFLOWER HANDLED TRI-CORNERED NAPPY – ICE GREEN (PERFECT EXAMPLE; FROSTY AND ATTRACTIVE)**
- _____ 262. Dugan Circle Scroll Handled Creamer – Purp. (rare item; nice irid.; small chip on base)
- _____ 263. Dugan Circle Scroll Spooner – Purp. (another rare item w/ super irid.)
- _____ **263A. DUGAN CIRCLE SCROLL TUMBLER – PURP. (RARE AND DESIRABLE; NICE MULTI-COLORED IRID.)**
- _____ **263B. DUGAN CIRCLE SCROLL TUMBLER – DK. MARI. (EXCELLENT EXAMPLE; DARK W/ SUPER IRID.)**
- _____ 264. Dugan Circle Scroll J.I.P. Hat Shape – Mari. (scarce; nice color and irid.; satiny)
- _____ **265. 9" DUGAN APPLE BLOSSOM TWIG 10 RUFFLED BOWL – LAVENDER (RARE BASE COLOR W/ RED AND BLUE HIGHLIGHTS)**
- _____ **266. DUGAN CAROLINE HANDLED FLOWER BASKET – P. OPAL. (VERY SCARCE AND VERY DESIRABLE; NICE OPAL.)**
- _____ 267. 9" Dugan Soutache Domed Flared Plate w/ T.C.E. – P. Opal. (very scarce item; nice color and opal.)
- _____ 268. Dugan Butterfly and Tulip Deep 4 Cornered Ftd. Bowl – Mari. (scarce shape; nice color, detail and irid.)
- _____ 269. 8-1/2"-9" Dugan Round Up Flat Plate – Blue (very scarce; has satiny finish)
- _____ 270. Dugan Amaryllis Flared Stemmed Plate Whimsey – Purp. (very scarce; has a satiny finish)
- _____ 271. 8-1/2"-9" Dugan Fanciful Flat Plate – Blue (very scarce; nice satiny finish)
- _____ 272. Dugan Pastel Swan Master Salt – Purp. (scarce; perfect w/ nice color and irid.)
- _____ 273. Dugan Dahlia 4 Pc. Table Set – Mari. (a very scarce set; nice color and irid.)
- _____ 274. Fenton Stretch Cupped in Rose Bowl – Red (dark color and irid.; gettin' tough)
- _____ **275. 7-1/2" FENTON BLACKBERRY 2 ROW OPEN EDGE BASKETWEAVE FLAT PLATE – MARI. (RARE AND VERY DESIRABLE; IRID. WORN A BIT IN CENTER)**
- _____ **276. 7-1/2" FENTON 1911 B.P.O.E. ATLANTIC CITY FLAT PLATE – BLUE (RARE AND VERY DESIRABLE; HAS BRIGHT SATINY FINISH)**
- _____ **277. 6" FENTON "SEASON'S GREETINGS – EAT PARADISE SODA" FLAT PLATE – AMYTH. (VERY SCARCE AND HAS A NICE SATINY FINISH)**

- _____ 278. **6" FENTON SAILBOATS FLAT PLATE – BLUE (VERY RARE ITEM W/ GREAT COLOR AND EXCELLENT DETAIL)**
- _____ 279. 7-1/2" Fenton Vintage Grape Flat Plate – Green (scarce; nice color and irid.)
- _____ 280. **9" FENTON DRAGON AND LOTUS 8 RUFFLED BOWL – MARI./ MOONSTONE (RARE AND VERY DESIRABLE; GREAT COLOR AND IRID.)**
- _____ 281. 7-1/2" Fenton Acorn 8 Ruffled Bowl – Mari./ Moonstone (very scarce and desirable item; nice)
- _____ 282. **8-1/2" FENTON PEACOCK AND GRAPE 8 RUFFLED BOWL – LIME GREEN OPAL. (VERY DESIRABLE FENTON PASTEL ITEM; ATTRACTIVE)**
- _____ 283. **8" FENTON DRAGON AND LOTUS SPATULA FTD. 8 RUFFLED BOWL – LIME GREEN OPAL. (ANOTHER TOUGH FENTON PASTEL ITEM W/ NICE IRID.)**
- _____ 284. **FENTON STRAWBERRY 2 HANDLED BON BON – LIME GREEN OPAL. (ONE OF MY ALL TIME FAVORITES; GREAT OPAL. AND IRID.)**
- _____ 285. **9" FENTON VINTAGE GRAPE 8 RUFFLED BOWL – PERSIAN BLUE/ MARI. (FIRST WE'VE SOLD IN A WHILE; UNUSUAL AND VERY TOUGH TO FIND)**
- _____ 286. **FENTON BLACKBERRY SPRAY 6 RUFFLED HAT – AQUA OPAL. (ANOTHER REALLY TOUGH FENTON PASTEL ITEM; NICE)**
- _____ 287. Fenton Banded Blackberry 6 Ruffled Hat – Mari./ Moonstone (very scarce item in this color; nice pastel)
- _____ 288. **FENTON paneled DANDELION TANKARD WATER PITCHER – BLUE (SCARCE ITEM; NICE BRIGHT SATINY FINISH)**
- _____ 289. Fenton Scotch Thistle Stemmed Ruffled Crimped Edge Compote – Blue (scarce; small chip on base)
- _____ 290. **FENTON HORSEHEAD MEDALLION FTD. FLARED NUT BOWL – RED SLAG (RARE AND VERY DESIRABLE; DARK COLOR AND IRID.)**
- _____ 291. **7" FENTON HORSEHEAD MEDALLION 6 RUFFLED BOWL – RED/ AMBERINA (VERY RARE ITEM; HAS 1" CRACK; NICE COLOR)**
- _____ 292. **FENTON HORSEHEAD MEDALLION FTD. ROSE BOWL – MARI./ VASELINE (VERY SCARCE AND ATTRACTIVE; SORTA PASTEL)**
- _____ 293. Fenton Horsehead Medallion Ftd. Rose Bowl – Lime Green (very scarce and nice; has mari. overlay)
- _____ 294. Fenton Horsehead Medallion J.I.P. Ftd. Bowl – Lime Green/ Mari. (scarce shape and color; nice irid.)
- _____ 295. Fenton Horsehead Medallion Ftd. Flared Nut Bowl – Mari./ Vaseline (scarce; attractive item)
- _____ 296. 6-1/2"-7" Fenton Horsehead Medallion I.C. Shaped Bowl – Powder Blue/ Mari. (scarce color and shape; has dark satiny finish)
- _____ 297. **FENTON HORSEHEAD MEDALLION FTD. ROSE BOWL – BLUE (VERY SCARCE; NICE DETAIL AND IRID.)**
- _____ 298. Fenton Horsehead Medallion Ftd. 8 Ruffled Bowl – Blue (scarce; nice color and irid.)
- _____ 299. Fenton Horsehead Medallion J.I.P. Ftd. Bowl – Blue (scarce shape for this color; nice detail)
- _____ 300. **7-1/2" FENTON HORSEHEAD MEDALLION FLAT PLATE – BLUE (RARE AND DESIRABLE; GREAT DETAIL AND SATINY IRID.)**
- _____ 301. 6-1/2" Fenton Horsehead Medallion Deep Flared Bowl – Blue (scarce; nice color and irid.)
- _____ 302. **FENTON HORSEHEAD MEDALLION FTD. ROSE BOWL – POWDER BLUE/ MARI. (RARE COLOR; HAS LIGHT IRID.; NICE)**
- _____ 303. **FENTON HORSEHEAD MEDALLION FLARED NUT BOWL – POWDER BLUE/ MARI. (RARE COLOR; TOUGH TO FIND; NICE)**
- _____ 304. 6-1/2"-7" Fenton Horsehead Medallion I.C. Shaped Bowl – Amyth. (very scarce color; has dark satiny irid.)
- _____ 305. Fenton Horsehead Medallion Ftd. 8 Ruffled Bowl – Amyth. (attractive item; has nice bright irid.)
- _____ 306. Fenton Horsehead Medallion Ftd. Flared Nut Bowl – Amber (rare color to find in this shape; has bruise)
- _____ 307. Fenton Horsehead Medallion J.I.P. Ftd. Bowl – Amber (rare color and shape; nice irid.)
- _____ 308. Fenton Horsehead Medallion J.I.P. Ftd. Bowl – Mari. (has a really unusual shape; interesting)
- _____ 309. Fenton Horsehead Medallion Ftd. Odd 8 Ruffled Bowl – Mari. (has odd shape; nice detail)
- _____ 310. **FENTON HORSEHEAD MEDALLION FTD. FLARED NUT BOWL – AQUA/ MARI. (ACTUALLY QUITE A RARE ITEM; NICE)**
- _____ 311. Fenton Horsehead Medallion J.I.P. Ftd. Bowl – Green (scarce item; has a darker satiny finish)
- _____ 312. Fenton Horsehead Medallion Ftd. 8 Ruffled Bowl – Green (very desirable; has bright irid.; scarce)
- _____ 313. Fenton Horsehead Medallion Ftd. I.C. Shaped Bowl – Green (scarce color and shape; nice)
- _____ 314. 7"-7-1/2" Fenton Horsehead Medallion 6 Ruffled Bowl – Green (very scarce in this color; satiny)
- _____ 315. **FENTON LEAF TIERS FTD. TUMBLER – BLUE (EXTREMELY RARE IN THIS COLOR; MAY HAVE SMALL CHIP ON ONE TOE)**
- _____ 315A. **FENTON LILY OF THE VALLEY TUMBLER – BLUE (RARE AND DESIRABLE PATTERN; PRETTY NICE)**
- _____ 316. Fenton Leaf Tiers Ftd. Tumbler – Dk. Mari. (super color and irid.)
- _____ 317. Fenton Lattice and Grape Tumbler – Sun Colored Amyth. (very odd tint for this pattern)
- _____ 318. **FENTON LATTICE AND GRAPE TUMBLER – WHITE (VERY SCARCE; NICE AND FROSTY)**
- _____ 319. Fenton Floral and Grape Tumbler – Green (very scarce; nice color and irid.)
- _____ 320. **FENTON FENTONIA FRUIT TUMBLER – BLUE (VERY RARE VARIATION; PERFECT; SATINY)**
- _____ 321. Fenton Bouquet Tumbler – Elec. Blue (super example w/ excellent irid.)
- _____ 322. Fenton Fluffy Peacock Tumbler – Blue (scarce; has goldish highlights)
- _____ 323. **FENTON BLUEBERRY TUMBLER – WHITE (VERY SCARCE; NICE FROSTY IRID. AND COLOR)**
- _____ 324. Fenton Butterfly and Berry Tumbler – Green (very scarce; nice color and irid.)
- _____ 325. **FENTON MILADY TUMBLER – GREEN (EXTREMELY RARE COLOR FOR THIS ITEM; GREAT IRID.)**
- _____ 326. Fenton Milady Tumbler – Amyth. (very scarce; has average irid.)
- _____ 327. Fenton Orange Tree Orchard Tumbler – White (very scarce; frosty w/ pastel irid.)
- _____ 328. Fenton Blackberry Spray Flared Crimped Edge Hat – Aqua (odd shape; attractive)
- _____ 329. Fenton 2 Row Open Edge 6 Ruffled Hat – Aqua (scarce; nice)
- _____ 330. Fenton Little Fishes Ftd. 6 Ruffled Sauce – Aqua (very scarce; nice detail; satiny)

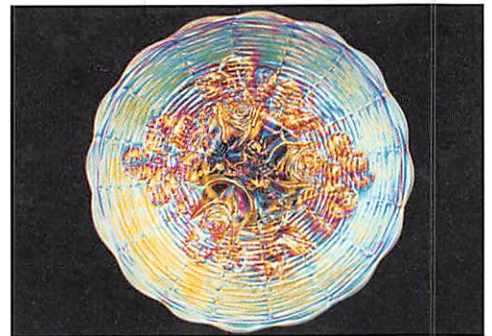
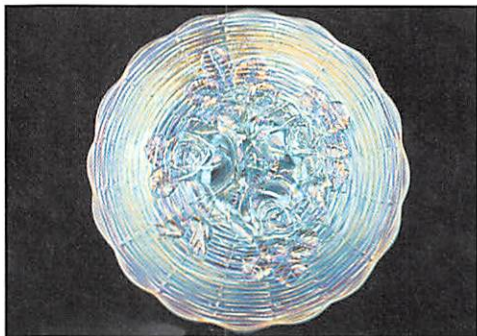
- _____ 331. 5" Fenton Sailboats I.C. Shaped Sauce – Aqua (scarce shape; scarce color)
- _____ 332. Fenton Peacock at the Urn Stemmed 6 Ruffled Compote – Aqua (scarce base color w/ average irid.)
- _____ **333. FENTON PEACOCK AT THE URN STEMMED 6 RUFFLED COMPOTE – GREEN (VERY SCARCE ITEM; NOT OFTEN SOLD)**
- _____ 334. Fenton Peacock at the Urn Stemmed Flared Compote – Powder Blue/ Mari. (scarce base color; light irid.)
- _____ **335. FENTON FIGURAL BUTTERFLY ORNAMENT – BLUE (RARE AND VERY DESIRABLE NOVELTY; GREAT COLOR AND DETAIL)**
- _____ **335A. FENTON FIGURAL BUTTERFLY ORNAMENT – DK. MARI. (ANOTHER RARE ITEM; SUPER COLOR AND IRID.)**
- _____ **336. FENTON MINIATURE BLACKBERRY STEMMED COMPOTE – WHITE (RARE; FROSTY W/ GREAT MULTI-COLORED IRID.)**
- _____ 337. Fenton Miniature Blackberry Stemmed Compote – Green (odd flare; satiny)
- _____ 338. Fenton Miniature Blackberry Stemmed Compote – Green (satiny; has small exposed chip on base)
- _____ 339. Fenton Miniature Blackberry Stemmed Compote – Blue (satiny; nice color)
- _____ **340. FENTON KITTENS HANDLED CUP – BLUE (RARE PART TO FIND; NICE COLOR AND EXCELLENT DETAIL)**
- _____ **341. FENTON KITTENS 6 RUFFLED BOWL – BLUE (VERY SCARCE AND DESIRABLE; NICE COLOR AND DETAIL)**
- _____ **342. FENTON KITTENS 4 SIDED BOWL – BLUE (VERY SCARCE AND DESIRABLE; SUPER COLOR)**
- _____ **343. FENTON KITTENS 2 SIDED BANANA DISH – BLUE (ANOTHER VERY SCARCE ITEM; SCARCE SHAPE IN THIS COLOR)**
- _____ **344. FENTON KITTENS 4 SIDED TOOTHPICK HOLDER – BLUE (VERY SCARCE AND DESIRABLE; NICE COLOR)**
- _____ 345. Fenton Kittens 4 Sided Bowl – Aqua/ Mari. (scarce base color w/ a heavy marigold overlay)
- _____ **346. FENTON KITTENS CUP AND SAUCER – DK. MARI. (VERY DESIRABLE; HAS SUPER COLOR AND DETAIL)**
- _____ 347. Fenton Kittens Cereal Bowl – Dk. Mari. (very scarce; nice color and detail)
- _____ 348. Fenton Kittens 6 Ruffled Bowl – Mari. (nice satiny finish; scarce)
- _____ 349. Fenton Kittens 2 Sided Banana Dish – Dk. Mari. (super color; scarce)
- _____ 350. Fenton Kittens 4 Sided Bowl w/ 2 Sets of Kittens – Dk. Mari. (scarce variation; nice color)
- _____ **351. FENTON FLOWERS FTD. ROSE BOWL – WHITE (VERY SCARCE; NICE AND FROSTY)**
- _____ **352. FENTON FLOWERS FTD. ROSE BOWL – AMYTH. (ABSOLUTELY FANTASTIC IRID.; A KEEPER)**
- _____ 353. Fenton Flowers Ftd. Rose Bowl – Green (rare color; tough to find; satiny)
- _____ 354. Fenton Flowers Ftd. Rose Bowl – Blue (nice satiny finish)
- _____ **355. 9"-9-1/2" FENTON HOLLY FLAT PLATE – BLACK AMYTH. (RARE AND VERY DESIRABLE; DARK BASE COLOR; SATINY)**
- _____ **356. 9"-9-1/2" FENTON HOLLY FLARED PLATE – GREEN (RARE AND DESIRABLE; BRIGHT COLOR AND IRID.)**
- _____ **356A. 9"-9-1/2" FENTON HOLLY FLAT PLATE – BLUE (VERY SCARCE AND DESIRABLE; NICE MULTI-COLORED IRID.)**
- _____ 357. 9"-9-1/2" Fenton Orange Tree Flat Plate – Blue (very scarce and nice; has a darker reddish finish)
- _____ 358. 9"-9-1/2" Fenton Peacock at the Urn Plate – Blue (scarce; has average satiny finish)
- _____ 359. 9"-9-1/2" Fenton Peacock at the Urn Plate – White (very scarce; average color; goldish)
- _____ **360. 9"-9-1/2" FENTON HEART AND VINE FLAT PLATE – BLUE (A SUPER, SUPER EXAMPLE; BRIGHT RED AND BLUE HIGHLIGHTS)**
- _____ **360A. 9" FENTON HEART AND VINE FLAT PLATE – AMYTH. (VERY SCARCE AND VERY DESIRABLE; HAS NICE GOLD HIGHLIGHTS)**
- _____ 361. 7-1/2" Fenton Pine Cone Flat Plate – Blue (very scarce; has a satiny finish)
- _____ 362. 6" Fenton Pine Cone Flared Plate – Green (attractive item; scarce)
- _____ **363. 7" FENTON LIONS DEEP FLARED BOWL – POWDER BLUE (VERY SCARCE BASE COLOR; A TOUGHIE)**
- _____ 364. 7-1/2" Fenton Lions 6 Ruffled Bowl – Blue (very scarce; nice detail and irid.)
- _____ **365. FENTON LEAF TIERS SPOONER WHIMSEY FLARED PLATE OR BOWL – DK. MARI. (RARE ITEM MADE FROM THE SPOONER; REALLY NICE)**
- _____ **366. FENTON ORANGE TREE COVERED POWDER JAR – AMYTH. (RARE COLOR FOR THIS ITEM; NOT MANY SEEN)**
- _____ 367. Fenton Stippled Rays Lg. Stemmed Deep Round Compote – Green (usually only seen in stretch colors; nice)
- _____ 368. Fenton Vintage Grape Small Size Epergne – Green (scarce; satiny)
- _____ 369. 10"-11" Fenton Butterfly and Berry Swung Vase – Green (scarce color; average irid.)
- _____ **370. 10"-11" FENTON STAG AND HOLLY BALL FTD. I.C. SHAPED BOWL – BLUE (NICE ITEM; HAS BLUE HIGHLIGHTS)**
- _____ **371. 10-1/2"-11-1/2" FENTON STAG AND HOLLY BALL FTD. 8 RUFFLED BOWL – BLACK AMYTH. (VERY RARE ITEM IN THIS COLOR – TOUGH!)**
- _____ 372. 8-1/2" Fenton Stag and Holly Spatula Ftd. I.C. Shaped Bowl – Green (scarce; really nice color and detail)
- _____ 373. 8" Fenton Dragon and Lotus Spatula Ftd. I.C. Shaped Bowl – Amyth. (has really nice irid.; scarce color)
- _____ 374. 9" Fenton Thistle 8 Ruffled Bowl – Green (super example of this pattern; rich color)
- _____ **375. 7-1/2"-8" FENTON G & C 8 RUFFLED BOWL – RED (RARE AND DESIRABLE; DARK RED W/ SATINY FINISH)**
- _____ 376. Fenton Holly 6 Ruffled Hat – Red/ Brick Red (odd tint w/ satiny irid.)
- _____ 377. 9" Fenton Wild Blackberry 8 Ruffled Bowl – Green (attractive example of a scarce pattern)
- _____ 378. 8-1/2" Fenton Captive Rose 6 Ruffled Bowl – Green (nice color and irid.)
- _____ 379. 8-1/2"-9" Fenton Peacock and Grape 8 Ruffled Bowl – Blue (nice color and irid.)
- _____ 380. Lg. Depression Era Bunny Bank – Lt. Mari. (larger size a bit tough to find)

FOR THE RESULTS OF THIS OR ANY BURNS AUCTION SERVICE AUCTION
SEND A S.A.S.E. AND \$3.00 (INCLUDE NAME OR DATE OF AUCTION) TO:

EMMA TILTON
P.O. BOX 273 • GNADENHUTTEN, OH 44629

VISIT US ON THE WEB!

<http://zeus.kspress.com/woodsland/burnsauction>
for pictures, complete listings and upcoming auctions



BURNS
 AUCTION SERVICE
 P.O. BOX 608 • BATH, NEW YORK 14810

**Lincoln Land
 Carnival Glass Club
 Convention Auction
 Friday & Saturday
 June 9-10, 2000**

Friday: Preview 3:00 P.M. • Auction 6:00 P.M.
 Saturday: Preview 7:00 A.M. • Auction 9:00 A.M.

First Class Mail
 U.S. Postage
 PAID
 Eugene, Oregon
 Permit No. 305

