

# CARNIVAL GLASS AUCTION

Saturday, May 6, 2000 9:00 a.m.

Mickey Reichel Antique & Auction L.C.

Held Inside the Mickey Reichel Auction Center, Boonville, Missouri

Office: 660-882-5292 • Home: 660-882-5283



Direct e-mail: [mreichel@undata.com](mailto:mreichel@undata.com)

125



100



220



326



21



224



339



223



160





# NO BUYERS PREMIUM

## Held Inside the Mickey Reichel Auction Center

1 Mile North of I-70 on Hwy. 5, Exit 101, Boonville, Missouri • 20 Miles West of Columbia, MO on I-70  
Preview Friday 12 p.m. - 6 p.m. and 7:30 a.m. - 9:00 a.m. Day of Auction

Make Reservations EARLY at one of these local motels:

Days Inn: 660-882-8624 • Comfort Inn: 660-882-5317 • Super 8: 660-882-2900

### Auction Consists of Rarity, Great Irid. and Variety

WRITE IN BIDS: If you are unable to attend the auction, we will be happy to accept absentee bids which must be received by THURSDAY, MAY 4, 2000. Don't Delay.

FOR AUCTION PRICE RESULTS: Send \$3.00 and Large S.A.S.E. to 516 Third Street, Boonville, MO 65233-1536

PLEASE NOTE: There is a **\$5 handling charge for each successful bid which will be added to the selling price** for all write-in bids. This is in addition to the cost of postage, insurance and packing. Your write-in bid will be entered just as if you are present and bidding. **Successful bidders will be notified in 1 to 3 days by the auctioneer (so be sure to include your phone number).** Direct mail bids to Auctioneer Mickey Reichel, 516 Third Street, Boonville, MO 65233-1536. Terms: Cash or Check accepted with proper I.D. and Social Security Number and References. Announcements made day of the auction supercede all printed material. Not Responsible for Accidents or Sold Items.

**No return on any items once they leave the Auction Center (No Exceptions).**\*\*\*\*\*

Call for additional information: 660-882-5292 days or 660-882-5283 evenings before 9:00 p.m.

FAX: 660-882-5292 (evening hours start FAX transmission after beep)

MAIL BIDS: Items are bid on in perfect condition with average or above iridescence OR as listed in the brochures. Bids will not be carried out when damage on an item has been found during the auction.

PEOPLE PRESENT AT AUCTION ARE RESPONSIBLE FOR FINDING ANY PINHEADS, WEAR, SPOTTINESS, MANUFACTURER'S DEFECTS OR ANY OTHER MINOR FLAWS, ETC.

NOTE: Read each line, as we have accentuated the type of no particular piece, all are special.

### THANK YOU FOR ATTENDING TODAY

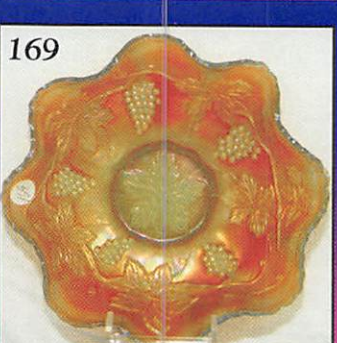
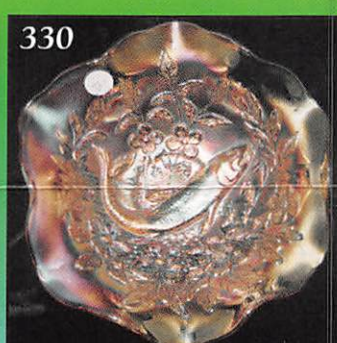
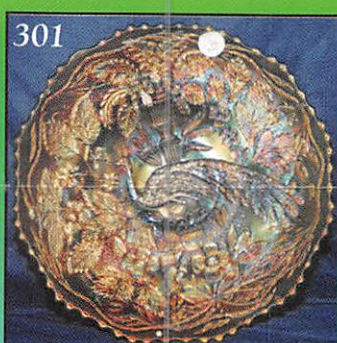
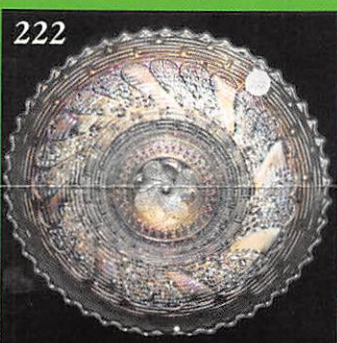
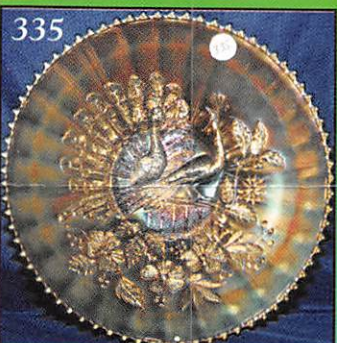
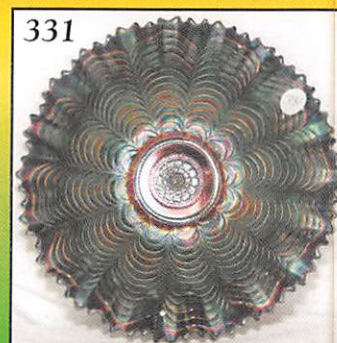
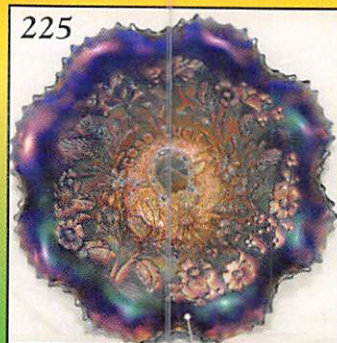
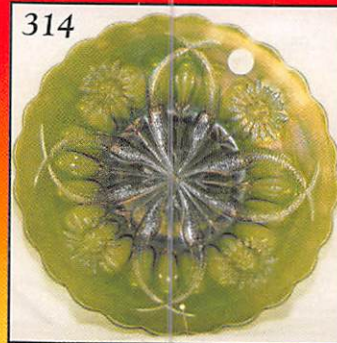
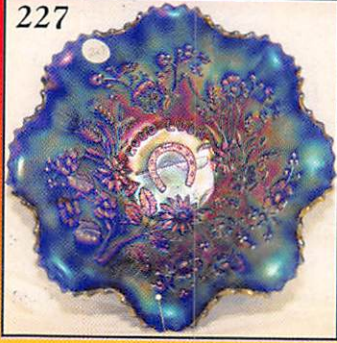
1. Clam - 5½" Frosted Block Rose Bowl
2. **G - 9" Ruffled w/Grape Leaves Bowl - Beautiful**
3. G - N Wild Rose Stipple Rays Ftd. Bowl
4. **M - Orange Tree Powder Dish w/lid - Extra Nice**
5. Teal - Louisa Rose Bowl
6. **G - 10", 6-Ruffle Little Flowers Bowl**
7. A - 3 in 1, 9" Coin Spot Bowl - Nice Example
8. **P - 8½" N Grape & Cable BW Bowl - Multi Elec.**
9. G - N Ftd, Raspberry Bowl - Daisy & Plume Ext. - Great Example
10. **PO - 7½" CRE, Handgrip, Single Flower Dish**
11. PO - Ftd. Dugan Cherries Ruffled Bowl - Pl. Int.
12. **PO - Beaded Panels, Tri-Corner, CRE Compote - Beautiful Example**
13. PO - Leaf Ray Nappy - Spade Shape - Super Opal
14. **PO - 6", 6-Ruffle Petal & Fan Bowl - Dark Irid.**
15. PO - 6" 6-Ruffle Petal & Fan Bowl - Light Irid.
16. **PO - 9" Ruffled Dome Base Dugan Dogwood Sprays Bowl - Extra Nice**
17. PO - 9", 10-Ruffle, Dugan Flowers & Frames Bowl, Lots of Opal

18. **PO - 10¼", 6-Ruffle Petal & Fan, Lg. Bowl - Great One**
19. PO - 9", 10-Crimped Edge Single Flower Bowl - Pl. Int.
20. **PO - 11", 6-Ruffle Ski Star & Compass Master Bowl**
- ★21. Outstanding P - Flat 9¼" Imp. Grape Plate - Radium Elec.
22. **B - 11" Ball Ftd 8-Ruffle Two Flowers Bowl - Great Example**
23. Pumpkin M - 11" Sq. 8-Ruffle Stag & Holly Bowl - A Beauty - Ball Ftd.
24. **M - Thistle Waterlily & Cattail Banana Bowl - Scarce**
25. G - Thistle Waterlily & Cattail Banana Bowl - Scarce
26. **Rich M - 11" Ball Ftd. Sq. 8-Ruffle Chrysanthemum Windmill Bowl**
27. G - 9¼", 3 in 1, Peacock Tail Vt. Bowl - Star Base Ext.
28. **A - 9" Rare Tight CRE Feathered Serpent Bowl**
- 28A. Rich M - 9", 6-Ruffle Fenton Thistle Bowl - Beautiful
29. **Scarce G - 8¼", 3 in 1, Persian Med. Bowl - Neat Shape**



30. G - 8 $\frac{1}{4}$ ", 3 in 1, Fenton Vintage Bowl - Scarce Shape
31. **G - 6-Ruffle Wreath Rose Compote**
32. M - Poodle Covered Powder Dish
33. **B - Mini Blackberry Compote - Base Nick**
34. Clear - 7 $\frac{1}{4}$ " Smooth Panel Vase - Radium M - Overlay
35. **A - Scarce 8 $\frac{1}{2}$ " Twigs Bud Vase - Nice Example**
36. Yellow Amber - Scarce Smooth Ray, Ruffled Rose Bowl w/Stem - Neat
37. **Smoke - Imp. 7 $\frac{1}{4}$ " Swirl Vase**
38. B - 10 $\frac{1}{2}$ " Fenton Knotted Beads Vase - 5" Top
39. **G - 7 $\frac{1}{2}$ " Dia. Point Columns Vase**
40. M - 7" Stippled Tree of Life Candlesticks - 6-Sided Base
41. **M - Great 9 $\frac{1}{2}$ " Collar Base Flat Peacock & Grape Plate**
42. Large B - Ball Ftd. 10" Orange Tree Fruit Bowl
43. **M - Twins Fruit Bowl w/base**
- ★44. G - 9 $\frac{1}{2}$ " Sq. Smooth Ray Bowl - Rare Shape
45. **A - 10" Ball Ftd. Persian Med. Int. Grape & Cable Fruit Bowl**
46. G - 10" Ball Ftd. Persian Med. Int. Grape & Cable Fruit Bowl
47. **M - 10" Ball Ftd. Persian Med. Int. Grape & Cable Fruit Bowl**
48. B - 10" Ball Ftd. Persian Med. Int. Grape & Cable Fruit Bowl
49. **P - 8 $\frac{1}{4}$ " Imp. Beaded Bulls' Eye Vase - 5 $\frac{1}{4}$ " Top, 3 $\frac{3}{8}$ " Base - Elec.**
50. Violet - 11 $\frac{1}{2}$ " Imp. Beaded Bulls' Eye Vase - 4 $\frac{1}{2}$ " Top, 3 $\frac{3}{8}$ " Base
51. **P - 8 $\frac{1}{4}$ " Imp. Beaded Bulls' Eye Vase - 5 $\frac{1}{8}$ " Top, 3 $\frac{3}{8}$ " Base - Elec.**
52. Amber - 12" Imp. Beaded Bulls' Eye Vase - 4 $\frac{1}{4}$ " Top, 3 $\frac{3}{8}$ " Base - Radium
53. **Amber - 10" Imp. Beaded Bulls' Eye Vase - 5 $\frac{1}{4}$ " Top, 3 $\frac{3}{8}$ " Base - Radium**
54. Helios Green - 11" Imp. Beaded Bulls' Eye Vase - 4" Top, 3 $\frac{3}{8}$ " Base
55. **G - 8 $\frac{1}{4}$ " Imp. Beaded Bulls' Eye Vase - 7" Top, 3 $\frac{3}{8}$ " Base - Glows**
56. Yellow G - 11 $\frac{1}{4}$ " Imp. Beaded Bulls' Eye Vase - 5" Top, 3 $\frac{3}{8}$ " Base
57. **M - 11" Imp. Beaded Bulls' Eye Vase - 4 $\frac{5}{8}$ " Top, 3 $\frac{3}{8}$ " Clear Base**
58. M - 10 $\frac{1}{2}$ " Imp. Beaded Bulls' Eye Vase - 5 $\frac{1}{4}$ " Top, 3 $\frac{3}{8}$ " Clear Base
59. **M - 7 $\frac{1}{4}$ " Imp. Beaded Bulls' Eye Vase - 5 $\frac{1}{8}$ " Top, 3 $\frac{3}{8}$ " Base**
60. G - 8" Squatty N Feathers Vase - Star Base - 3 $\frac{1}{2}$ " Base, 3" Top
61. **White Satin Frosted w/M Overlay - 11" Smooth Panel Funeral Vase - 7 $\frac{1}{4}$ " Top, 4 $\frac{3}{8}$ " Base**
62. B - 16" Swung Hobnail Vt. or Rustic Vase - 4 $\frac{1}{2}$ " Base, 5 $\frac{1}{4}$ " Top
63. **G - 16 $\frac{1}{4}$ " Swung Hobnail Vt. or Rustic Vase - 4 $\frac{1}{8}$ " Base, 4 $\frac{1}{4}$ " Flame Top**
64. R - 10" Stretched 6-Ruffle Vase - 3 $\frac{1}{8}$ " Smooth Pontil Base, 6" Top
65. **Amberina Red - 8" Stretch CRE Vase - 6" Top, 3 $\frac{1}{4}$ " Smooth Pontil Base**
66. A - 15 $\frac{1}{8}$ " Spearhead & Rib Vase - 3 $\frac{1}{8}$ " Base, 4 $\frac{7}{8}$ " Ruffle Top - Super Irid
67. **A - 16 $\frac{3}{4}$ " Spearhead & Rib Vase - 3 $\frac{1}{8}$ " Base, 4 $\frac{1}{2}$ " Ruffle Top - Super Irid**
68. M - 5" Squatty Lined Lattice Vase - 3 $\frac{1}{4}$ " Base, 5 $\frac{1}{4}$ " Top
69. **BA - 10" Squatty Lined Lattice Vase - 3 $\frac{1}{8}$ " Base, 4" Top - Multi Elec.**
70. Frosty White - 9 $\frac{1}{4}$ " Lined Lattice Vase - 3 $\frac{1}{8}$ " Base, 4" Top - Beauty
71. **Rare M - 13 $\frac{1}{2}$ " Fenton Bulls' Eye & Beads Vase - 3 $\frac{1}{2}$ " Base, 4 $\frac{1}{2}$ " Top**
72. A - 10 $\frac{1}{2}$ " April Showers Vase - Peacock Tail Int.
73. **Clear - 10 $\frac{1}{4}$ " Boggy Bayou Vase - M-Overlay Top Half**
74. PO - 11 $\frac{1}{8}$ " Pulled Loops Vase - Super Example
75. **Russet or Olive - 12" Pulled Loop Vase - Rare Color**
76. Frosty White - Oriental Poppy Tankard Pitcher - Cracked Top to Bottom
77. **Frosty White - N Oriental Poppy Tumbler - Lip Chip**
78. Rich M - 7 Pc. Fenton Butterfly & Berry Water Set - Nice
79. **P - N Grape & Cable Water Set**
80. M - N Pretty Panels Enameled Water Pitcher & 4 Tumblers
81. **M - Soda Gold Water Pitcher - Outstanding - Has Small Base Nick**
82. M - Soda Gold Tumblers - Choice A or B
83. **Deep P - Maple Leaf Water Pitcher & 4 Tumblers**
84. B - Enamel Cherries & Little Flowers Draped Int. Water Pitcher & 4 Tumblers
85. **B - Milady Tankard Pitcher - Scarce Beautiful Silver & Gold Radium Finish**
86. B - Milady Tumblers - Choice A, B, C or D
87. **M - Lattice & Daisy Pitcher w/6 Tumblers - Hole in Pitcher Base**
88. B - Paneled Dandelion Tankard & 7 Tumblers - Radium, Silver, Gold Finish
89. **Rich M - Imp. Windmill 7 pc. Water Set**
90. Yellowish Green - Imp. Lustre Rose 7 pc. Water Set
91. **M - Fenton Waterlily & Cattail Tumbler - Choice A or B**
92. A - Paneled Dandelion Tumbler
93. **P - N Grape & Cable Tumbler - Choice A or B**
94. B - Rambler Rose Tumbler
95. **A - Rambler Rose Tumbler**
96. B - Signed N Enameled Cherries Tumbler
97. **P - S-Repeat Punch Cups - 6 x \$ - Great Find**
98. M - 2 $\frac{1}{2}$ " Dia., Round Centerpiece 8-Hole Flower Frog w/Chip
99. **Frosty White - Stretch Dugan Leaf Ray Nappy**
- ★100. Pastel IB Opal?? - BO N Fantastic Ruffled Peacocks Bowl
101. **M - 9" Imp. Open Rose Plate**
102. P - N Leaf Beads Rose Bowl
103. **Super M - N Leaf & Beads Nut Bowl - Beautiful Piece of Glass**
104. Vas. - 10", 3 in 1, Fenton Vintage Bowl - Super Heavy M - Overlay
105. **W - 10 $\frac{1}{4}$ ", 6-Ruffle Cherry Chain Bowl**
106. G - 9 $\frac{1}{4}$ " Leaf Chain Plate - Satin, Silver w/Gold Hi-Lites







- \_\_\_\_\_ 107. **B - 9½" Captive Rose Plate - Satin, Silver w/Bold Hi-Lites**
- \_\_\_\_\_ 108. W - 5¼", 8-Ruffle Imp. Scroll Embossed, File Ext. Bowl - Super Elec.
- \_\_\_\_\_ 109. **M - 7¼", 8-Ruffle, Spt. Ftd., Stag & Holly Bowl**
- \_\_\_\_\_ 110. G - 8" ICS, Spt., Ftd., Peacock & Grape Bowl - Roughness on Spurs
- \_\_\_\_\_ 111. **PO - 6¾", 8-Ruffle, Bells & Beads Bowl - Real Dandy**
- \_\_\_\_\_ 112. B - 6½", 12-Scallop Pine Cone Plate
- \_\_\_\_\_ 112A. **G - N Leaf Beads Nut Bowl - Rayed Int.**
- \_\_\_\_\_ 113. Scarce B - 5" Rd. Ftd. Butterfly & Berry Dish
- \_\_\_\_\_ 114. **A - 9", 6-Ruffle Fenton Thistle Bowl**
- \_\_\_\_\_ 115. Beautiful M - Butterfly & Fern 7 pc. Water Set
- \_\_\_\_\_ 116. **P - N 7 pc. Grape & Cable Water Set**
- \_\_\_\_\_ 117. G - Butterfly & Fern Collar Base Tumbler - Radium Silver & Gold
- \_\_\_\_\_ 118. **M - Lattice Band Stork & Rushes Tumbler**
- \_\_\_\_\_ 119. M - N Waterlily & Cattail Tumbler
- \_\_\_\_\_ 120. **B - Grape & Gothic Arches Tumbler**
- \_\_\_\_\_ 121. Pumpkin M - Grape & Gothic Arches Tumbler
- \_\_\_\_\_ 122. **G - CRE, 6-Ruffled Captive Rose Compote - Scarce Beauty**
- \_\_\_\_\_ 123. Pumpkin M - 6-Ruffle Persian Med, 6¼" Compote - Clear Base
- \_\_\_\_\_ 124. **P - N Fern, Ruffled Compote - Daisy & Plume Ext. - Extra Pretty**
- \_\_\_\_\_ \*125. **SUPER BEAUTIFUL AMBER - 10¼", NU-Art, Homestead Chop Plate**
- \_\_\_\_\_ 126. **M - 8", 8-Ruffle, Spt. Ftd. Two Flowers Bowl**
- \_\_\_\_\_ 127. PO - Dugan Cherries, Int., Ext., Ftd., Banana Shape Bowl - Lotsa Opal
- \_\_\_\_\_ 128. **Beautiful M - Spt. Ftd., N Ruffled Sunflower Bowl**
- \_\_\_\_\_ 129. M - 8" ICS Fenton Peacock & Urn Bowl
- \_\_\_\_\_ 130. **Very Scarce G - 6½" ICS Peacock & Dahlia Bowl**
- \_\_\_\_\_ 131. M - 10", 6-Ruffle, Ten Mums Bowl - Rich Bowl
- \_\_\_\_\_ 132. **B - 4-Sides Up Pond Lily Bon-Bon**
- \_\_\_\_\_ 133. Rare B - 8½" PCE, N, Stipple Grape & Cable RB Bowl
- \_\_\_\_\_ 134. **A - 8½" PCE, N, Grape & Cable Bowl - Scarce BW Ext.**
- \_\_\_\_\_ 135. P - Grape & Cable Sweetmeat Compote w/Lid - Extra Nice
- \_\_\_\_\_ 136. **A - Ruffled Collar Base, N, Stipple 3-Fruits Bowl - Above Average**
- \_\_\_\_\_ 137. P - Ftd. N Ruffled Wishbone Bowl
- \_\_\_\_\_ 138. **M - Ftd. N Ruffled Wishbone Bowl - Pretty Example**
- \_\_\_\_\_ 139. A - Dome Base, N, 8-Ruffle Star of David & Bows
- \_\_\_\_\_ 140. **A - 9", 8-Ruffle, N, Grape Leaves Bowl - Very Pretty**
- \_\_\_\_\_ 141. G - Mlbg., 6-Ruffle, Nesting Swan Bowl - Minor Rim Nicks
- \_\_\_\_\_ 142. **M - 8¾", 10-Ruffle, Garden Path Vt. Bowl - Soda Gold Ext. - Great**
- \_\_\_\_\_ 143. P - 7-Ruffle, Beautiful Dugan Holly Berry Nappy
- \_\_\_\_\_ 144. **B - Orange Tree, 12" Flared, Round Top, Punch Bowl & Base**
- \_\_\_\_\_ 145. B - Orange Tree Punch Cups - 2 x 3
- \_\_\_\_\_ 146. **B - Enamel Decorated Columbine Water Pitcher & 4 Tumblers - Beautiful**
- \_\_\_\_\_ 147. **Scarce M - N Tornado Vase - 6¼" Tall**
- \_\_\_\_\_ 148. **Super P - 7" Squatty Imp. Ripple Vase - ¾" Base, 6½" Top - Detailed**
- \_\_\_\_\_ 149. Smoke - 7½" Morning Glory Bud Vase
- \_\_\_\_\_ 150. **Lav. Smoke - 11¼" Imp. Ripple Vase - Open Bubble in Base**
- \_\_\_\_\_ 151. M - European Thistle Vase
- \_\_\_\_\_ 152. **M - Imp. Grape Wine Decanter w/Stopper**
- \_\_\_\_\_ 153. M - Inverted Coin Dot, Radium, Tumbler
- \_\_\_\_\_ 154. **P - Heron Mug - RARE - Radium Silver & Gold**
- \_\_\_\_\_ 155. Scarce M - Fishermans Mug
- \_\_\_\_\_ 156. **P - Fishermans Mug**
- \_\_\_\_\_ 157. P - N Singing Birds Mug
- \_\_\_\_\_ 158. **G - Ftd. Ruffled N Wishbone Bowl**
- \_\_\_\_\_ 159. A - N 7½", 8-Ruffle Ftd. Wishbone Bowl
- \_\_\_\_\_ 160. **Rare M - 8¾" Dragon & Lotus Collar Base Plate - 1½" Off Table**
- \_\_\_\_\_ 161. Reverse Red Amberina - Collar Base, 8¼" ICS Dragon & Lotus Bowl
- \_\_\_\_\_ 162. **B - 7½" ICS Collar Base Dragon & Lotus Bowl**
- \_\_\_\_\_ 163. Deep B - 9", 8-Ruffle Collar Base Dragon & Lotus Bowl
- \_\_\_\_\_ 164. **Light B - 9", 8-Ruffle Collar Base Dragon & Lotus Bowl - Beautiful**
- \_\_\_\_\_ 165. Scarce Rich Amber - 9", 8-Ruffle Fenton Holly Bowl - Reddish Irid.
- \_\_\_\_\_ 166. **B - 8" ICS Fenton Holly Bowl - Elec. Blue Hi-Lites**
- \_\_\_\_\_ 167. Rich G - 9", 8-Ruffle Fenton Holly Bowl
- \_\_\_\_\_ 168. **Rare Yellow Amber - 8¾", 8-Ruffle Fenton Vintage Grape Bowl**
- \_\_\_\_\_ \*169. Persian B - 8½", 8-Ruffle Fenton Vintage Grape Bowl - Also Rare
- \_\_\_\_\_ 170. **G - 8¾", 8-Ruffle Fenton Vintage Grape Bowl**
- \_\_\_\_\_ 171. B - 9", 8-Ruffle Collar-Base Peacock & Grape Bowl - Looks Renninger
- \_\_\_\_\_ 172. **P - N PCE 3-Fruits Bowl - BW Ext.**
- \_\_\_\_\_ 173. Lav. A - 8½", 6-Ruffle Pony Bowl
- \_\_\_\_\_ 174. **M - 8½", 6-Ruffle Pony Bowl - Beautiful Radium, Pinks**
- \_\_\_\_\_ 175. Clam - 9½" Fenton Leaf Chain Plate - Very Pretty
- \_\_\_\_\_ 176. **Frosty White - 9½" Fenton Orange Tree Plate**
- \_\_\_\_\_ 177. G - 9", 6-Ruffle Fenton Thistle Bowl - Beautiful Blue Hi-Lites
- \_\_\_\_\_ 178. **Rich M - 7" Ruffled N Grape & Cable Whimsey Bowl from Tumbler**
- \_\_\_\_\_ \*179. A - 9", 6-Ruffle Whimsey Ftd. Bowl from Fenton Vintage Fernery - Rare
- \_\_\_\_\_ 180. **A - N Grape & Cable Whimsey Compote from Sweetmeat - Scarce Beauty**
- \_\_\_\_\_ 181. P - N 7½" Grape & Cable Plate - Leaf Center - BW Ext. - Beautiful Rarity
- \_\_\_\_\_ 182. **G - N 8½" Ruffled Grape & Cable Bowl - BW Ext. - Greens, Pinks, Bronze Irid**
- \_\_\_\_\_ \*183. Radium G - N 9" Spt. Ftd., Grape & Cable Plate - Meander Ext. WOW!!
- \_\_\_\_\_ 184. **G - 7½", 6-Ruffle N Grape & Cable Leaf Center Bowl**
- \_\_\_\_\_ 185. G - Teal?? - N Grape & Cable Bon Bon - A Beauty - Base Glows?
- \_\_\_\_\_ 186. **P - N Grape & Cable Hat Pin Holder - Beautiful Example**
- \_\_\_\_\_ \*187. Rare B - 2½" Tall, Fenton Kittens Vase or Toothpick - 2-Sides Pinched

188. P - N Greek Key Tumbler - A Beauty w/Flawed Base
189. P - Vineyard Grape Tumbler - Elec. Hi-Lites
190. G - N 5½" Squatty Leaf Columns Vase - 3½" Base, 4½" Top
191. Gorgeous P - 12¼" N Mid-Size Tree Trunk Vase - 4½" Base, 5" Top
192. M - 8½" Tall Imp. Scarce Flute & Cane Pitcher
193. AO - N Bushel Basket - Lots of Opal
194. B - N Rd. Bushel Basket - Above Average w/Elec. Highlights
195. AO - N Beaded Cable Rose Bowl - Lots of Opal w/Blue Hi-Lites
196. Ultra Rare G - Fenton Orange Tree Hat Pin Holder
- ★196A. P - N 9¼" Hearts & Flowers Plate w/RARE BW EXT.
197. Beautiful Pastel M - N PCE Stippled Strawberry Bowl
198. P - Thin Base N Ruffled Stipple Strawberry Bowl - Beautiful Irid
199. Rich M - N Ruffled Strawberry Bowl - BW Ext.
200. P - Spt. Ftd. 3-Fruits Med. Bowl - Ruffled w/Meander Ext. - Multi Elec.
201. Smoke G - 7½" Dia. Deep Round Ftd. Imp. Open Rose
202. PO - Ruffle, CRE, Folding Fan Compote - Peachy
203. G - N Spt. Ftd. 8-Ruffle Sunflower Bowl - Nice One
204. Extra Nice B - 7", 6-Ruffle Mirrored Lotus Bowl
205. Rare M - Dome Base, 8¾", 10-Ruffle Dugan Weeping Cherries Bowl
206. BA - 5½", 2 Row OE Basket w/6-Ruffle
207. Saph. Base - 5½", 2 Row OE Basket w/6-Ruffle
208. Extra Nice M - 9¼" Ftd. Fenton Fentonia, Rd., Master Berry Bowl
209. G - 8" Tight CRE Fenton Thistle Bowl - Scarce Edge Treatment
210. A - 8" Tight CRE Fenton Thistle Bowl - Scarce Edge & Color
211. Beautiful M - Collar Base 9" Sq. 8-Ruffle Dragon & Lotus Bowl
212. Rich M - Ftd. Horse Med. JIP Bowl - Great Pattern
213. M - 8¼" ICS, Apple Blossom Twigs Bowl - Pretty Pinks & Blues
- ★214. RARE M - Mlbg. 5¼" Peacock Proof Bowl - Light Radium Finish
215. A - Mlbg. 10¼" Peacock & Urn Ics. Bowl - Large Mold - Beautiful Multi-Satin
216. G - Mlbg. 9½", 6-Ruffle Primrose Bowl - Radium Blues, purple, gold
217. Deep G - 9" Spt. Ftd. Peacock & Grape Plate - Multi Elec. Example
218. Soft B - Ftd. Persian Med. Fenton Grape & Cable Fruit Bowl
219. RARE AMBER - Dugan 9" Flat Round-Up Plate - Blue, Purple Irid.
220. Outstanding P - Multi Elec., 8½" Round-Up Plate - WOW!!
221. Scarce Dugan B - 9" Round-Up Plate - Purples, Pinks, Golds
222. White - 9" Frosty Multi Irid. Round-Up Plate
223. Beautiful Pastel IB - N Peacocks Plate - RB Ext. - Lots of Color on this One
224. Magnificent G - N Ruffled Good Luck Bowl - BW Back - Blue Irids.
225. B - Ruffled N Stipple Good Luck Bowl - Multi Elec. - Thin Base
226. M - Ruffled Good Luck Bowl w/Scarce Stippling - Rich Gold Finish
227. Elec. B - Ruffled Good Luck Bowl - Just Beautiful - Ribbed Ext.
228. P - 9" Flat Good Luck Plate - BW Ext.
229. P - Multi-Elec. N PCE Good Luck Bowl - BW Ext.
230. M - 9" N Strawberry Plate - BW Ext. - Old Favorite
231. A - 8½" Low Ruffle Crimped Round-Up Bowl, Plate??
232. P - 8" ICS Round-Up Bowl - Beautiful Elec. Hi-Lites
233. Fantastic W - 9" Low Ruffle Fanciful Bowl or Plate - Lots of Blues
234. PO - Fanciful 8½" Low Ruffle Bowl or Plate - Thick Irid.
235. M - Lg. Cherry Circle Bon Bon - 4-Sides Up
236. Outstanding M - 9½", 8-Ruffle Dugan Vintage Bowl - Dome Base
237. A - 5" Rd. Peacock Tail Bowl Vt. w/Starred Base Ext.
238. B - 9", 3 in 1, Low Ruffle Ribbon Tie Bowl
239. RARE B - 9", 8-Ruffle N Greek Key Bowl
240. Pumpkin M - 8½" Ruffle Greek Key Bowl - RB - A Beauty - N
241. Lav. - Fruits & Flowers N Stemmed Bon Bon - Scarce
242. G - Fruits & Flowers N Stemmed Bon Bon
243. Amberina - 6¼", 6-Ruffle Sailboats Bowl - Orange Tree Ext.
- ★244. Deep RED - 5½" Low Ruffle Panther Ftd. Dish
245. Brick RED - 7½" Fenton 8-Ruffle Grape & Cable Bowl
246. RED - 5½" Ruffled 2-Row OE Basket
247. RED - 6" Deep Round Fenton Grape & Cable Bowl - Radium Silver Irid.
248. Frosty W - 9", 6-Ruffle Leaf Chain Bowl
249. Royal B - Fenton 10½", 6-Ruffle Cherry Chain Bowl
250. Great Radium M - 10-Ruffle Brooklyn Bridge Bowl - Adv. is Hot!!
251. G - 8" ICS Mlbg. Mayan, Radium Finish, Bowl
252. G - 9" Spt. Ftd. Fenton Grape & Cable Plate - Scarce Color
253. Rich M - 9" Spt. Ftd. Fenton Grape & Cable Plate - Lots of Pinks
254. Powder B Base - 6½" Low Ruffle Fenton Holly Bowl - Very Pretty Irid.

## RARE AUSTRALIAN ITEMS 255 THRU 287

255. Outstanding BA - Butterfly Bush & Warath, Lg. 9½" ICS Compote
256. Outstanding BA - 9¼", 12-Ruffle Butterfly Bush & Flannel Flower Lg. Compote



255



256



257



258



296



351



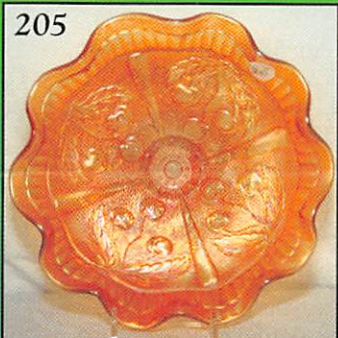
240



259



205



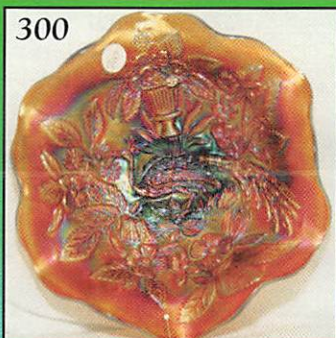
44



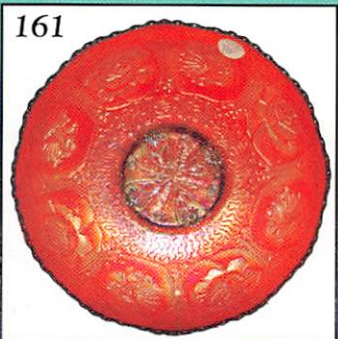
41



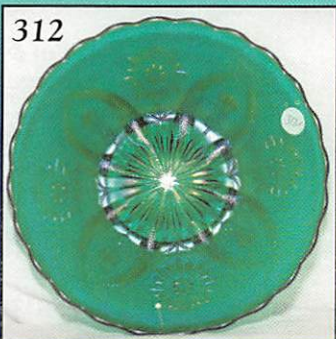
300



161



312



313



215



250



316



197



236






257. BA - 9 $\frac{1}{4}$ ", 16-Ruffle Kangaroo Bowl w/Branch - A Beauty
258. Elec. BA - 9 $\frac{1}{4}$ ", 12-Ruffle Shrike or Thunderbird Bowl - Radium Beauty
259. Radium BA - 9 $\frac{1}{2}$ ", 16-Ruffle Swan Bowl - Multi Irid.
260. Rich M - 9 $\frac{1}{2}$ ", 16-Ruffle Swan Bowl - Multi Irid. - Blues & Pinks
261. Rich M - 10", 8-Ruffle Magpie or Crow Bowl - Beautiful Irid.
262. BA - 5 $\frac{1}{2}$ ", 8-Ruffle Shrike or Thunderbird Little Bowl
263. BA - Diamonds, 12-Ruffle Open Sugar Bowl
264. M - 5 $\frac{1}{2}$ ", 12-Ruffle Scales Bowl - Beautiful Irid.
265. M - 6 $\frac{1}{2}$ ", 8-Ruffle Quilted Dia. Bowl
266. M - 9" Rd. Zipper Stitch Cordial Undertray - Beautiful
267. M - Band Diamonds Tumbler - Rare w/Radium Finish
- \*268. Ultra Rare BA - 9" Lily Vase - 4 $\frac{3}{8}$ " Base, 5 $\frac{3}{8}$ " Top - 1 of Few Known
269. BA - 8 $\frac{1}{2}$ " Mid-Size Gum Tip Vase - 3 $\frac{3}{4}$ " Base, 5 $\frac{3}{8}$ " Top
270. Beautiful M - Radium 10", 12-Ruffle Butterfly Bush w/Flannel Flower Lg. Compote
271. M - 9 $\frac{1}{4}$ ", 12-Ruffle Shrike or Thunderbird Bowl
272. Beautiful BA - 9 $\frac{1}{2}$ ", 12-Ruffle Kingfisher Bowl w/Gum Leaves
273. Beautiful BA - 5 $\frac{1}{2}$ ", 12-Ruffle Kingfisher Bowl w/Gum Leaves
274. M - 5 $\frac{1}{2}$ ", 8-Ruffle Magpie or Crow Bowl - Multi Radium Beauty
275. M - 5 $\frac{3}{8}$ ", 12-Ruffle Kangaroo w/Branch Bowl - Also Elec. Radium Beauty
276. Crystal M - 8 $\frac{1}{2}$ " Low ICS Golden Pansy Bowl
277. Crystal M - 4 $\frac{1}{2}$ " Rd. Golden Pansy Berry Bowl - Choice A, B or C
278. Crystal M - Oval 10" by 5 $\frac{1}{2}$ " Golden Pansy Tray
279. Crystal M - 9 $\frac{1}{4}$ " x 5 $\frac{1}{4}$ " Rect. Golden Pansy Dresser Tray
280. Crystal M - Oval 5 $\frac{3}{4}$ " x 3 $\frac{1}{4}$ " Pin Tray
281. Crystal M - Deep Banana Shape Oval, 5 x 2 $\frac{1}{2}$ " Golden Poppy Dish
282. Crystal M - 4 $\frac{1}{2}$ " 5-Sided Golden Thistle Little Plate
283. M - 5 $\frac{3}{8}$ " Deep Rd. Butterfly Bower, Dome Base Bowl - Broken Chain Ext.
284. M - 6 $\frac{1}{2}$ ", 8-Ruffle Pl. Int. Bowl - Brown Chain Ext.
285. M - Wills Gold Flake ENGLISH Ashtray - Rare Adv. Item
286. M - 6", 12-Ruffle Pl. Int. Bowl - Broken Chain Ext.
287. M - 4" Tall, 2 $\frac{1}{2}$ " Opening, Tumbler - On Base "1408  $\Delta$  44" Pattern??
288. PO - 6 $\frac{1}{2}$ " Four Flowers Plate - Pl. Back w/Full Opal
289. Dark Violet - Imp. Grape Tumbler - Radium Gold, Blue, Purple Hi-Lites
290. M - Wicker Work Shallow Bowl on Tri Pod Base w/Sowerby TM - Peacock Toe Chipped
291. B - Hen & Chickens Covered Dish
292. Rich M - Curved Star Celery Vase
293. M - Pt. Golden Wedding Whiskey Bottle - 1856 Date, Top of Bell w/Lid
294. M - Pt. Golden Wedding Whiskey Bottle - 1856 Date - Bottom of Bell w/Lid
295. Extra Nice M - Vintage Powder Jar w/Lid
296. Rare M - 9 $\frac{3}{8}$ " Spt. Ftd. Two Flowers Plate - Nice & Flat
297. Dark Rich M - 8" ICS Orange Tree Bowl
298. Emerald G - 8 $\frac{1}{4}$ ", 8-Ruffle N Strawberry Bowl - Pl. Ext.
299. Rich M - N Ruffled Stippled 3-Fruits Bowl w/Rib Ext. - Scarce Beauty
300. Outstanding A - 8 $\frac{1}{4}$ ", 6-Ruffle Mlbg. Mystery Bowl - Beautiful Satin
301. Pastel M - Fenton Peacock at Urn Plate - Blues & Pinks - 9"
302. Blue - Fenton Peacock at Urn Plate - 9" - Epoxy on Tip
303. B - 8" Round Peacock at Urn Fenton Bowl
304. B - 8 $\frac{1}{4}$ ", 8-Ruffle Fenton Peacock at Urn Bowl - Multi Elec. Dandy
305. Rich M - 9", 6-Ruffle Fenton Peacock at Urn Bowl
306. B - 9 $\frac{1}{2}$ " Flat Fenton Orange Tree Plate
307. Emerald G - 8" ICS Orange Tree Bowl w/Trunk Center
308. Dark M - Lg. Ball Ftd. Orange Tree Fruit Bowl - Int. & Ext. Very Pretty
309. MMG - 9", 6-Ruffle Westmoreland Smooth Rays Bowl - RARE
310. Pastel M - Ruffled Spt. Ftd. 8" Sunflower Bowl - A Beauty
311. Extra Nice M - 9" Sq. 8-Ruffle Plaid Bowl
312. Teal G - Beautiful 8 $\frac{1}{2}$ " Rd. Four Flowers Vt. Bowl
313. Outstanding 9 $\frac{1}{4}$ " Lime G - Four Flowers Vt. Plate
314. Neat Olive G - 9 $\frac{1}{4}$ " Four Flowers Vt. Plate
315. Yellow Amber - 9" Ruffled Four Flowers Vt. Bowl - Neat Color
316. W - 7 $\frac{1}{2}$ ", 6-Ruffle Headdress Bowl - Cosmos & Cave Ext. - Super Irid.
317. Teal G - 8 $\frac{1}{4}$ " Spt. Ftd. Peacock & Grape Plate
318. M - 4-Sides Up Kitten Dish
319. M - Kittens Vase or Toothpick
320. M - Imp. Flute Toothpick Holder - Minor Nicks on Base
321. P - Fine Cut & Roses Rose Bowl
322. Vas - Lotus & Grapes Vt., 4-Sides Up Bon Bon - Scarce Beauty
323. B - 6", 6-Ruffle Ball Ftd. Lotus & Grape Vt. Bowl
324. Rare Rich Amber - Blackberry Spray Ruffled Hat
325. G - 8 $\frac{1}{4}$ ", 8-Ruffle, N 3-Fruits Bowl - Smooth Ext. - Super
- \*326. Outstanding G - 8 $\frac{1}{2}$ ", 3 in 1, Concord Bowl - One of the Finest
327. M - 10 $\frac{1}{4}$ " ICS Ball Ftd. Stag & Holly Bowl - Lots of Pinks
328. Scarce Aqua - 7 $\frac{1}{2}$ ", 8-Ruffle Fenton Grape & Cable Bowl
329. P - N 5 $\frac{1}{2}$ " ICS Peacock at Urn Bowl
330. Beautiful M - 6-Ruffle Trout & Fly Bowl
331. Beautiful Example P - PCE Nippon Bowl - Scarce BW Ext.
332. P - 8-Ruffle Nippon Bowl w/BW Ext.
333. P - 9" N Peacocks Plate - Real Beauty
334. Lav. A - 8 $\frac{1}{4}$ " N Peacocks Plate
335. Pastel M - 9" N Peacock Plate - Great Pinks, Blues, Yellows
336. P - PCE N Peacocks Bowl - Great Multi Elec.



- \_\_\_\_\_ 337. P - N 8-Ruffle Peacock Bowl
- \_\_\_\_\_ ★338. A - Beautiful 9" Stipple 3-Fruits Plate - No Wear on Fruit
- \_\_\_\_\_ 339. Rare 9¼" M - Concord Plate
- \_\_\_\_\_ 340. P - Ftd. Grape Delight Nut Bowl
- \_\_\_\_\_ 341. P - Ftd. Grape Delight Rose Bowl
- \_\_\_\_\_ 342. Teal - Louisa Rose Bowl
- \_\_\_\_\_ 343. P - Ruffled N Ftd. Wishbone Bowl - Very Nice Example
- \_\_\_\_\_ 344. M - 9" N Ruffled 3-Fruits Bowl
- \_\_\_\_\_ 345. Lav. - 8¾", 8-Ruffle Spt. Ftd. 3-Fruits Meander Bowl
- \_\_\_\_\_ 346. G - 8¾", 8-Ruffle Dome Base 3-Fruits Meander Bowl - N
- \_\_\_\_\_ 347. Great M - N Raspberry Gravy Boat Whimsey - Very Pretty
- \_\_\_\_\_ 348. P - 7½", 8-Ruffle Imp. Scroll Embossed Bowl w/File Ext.
- \_\_\_\_\_ 349. A - 8¼" Fenton 3 in 1 Thistle Bowl - Scarce Shape and Color
- \_\_\_\_\_ 350. PO - 9", 3 in 1 Crimped Edge Raindrops Bowl - Very Pretty
- \_\_\_\_\_ 351. Rare BO - 8¼", 6-Ruffle Westmoreland Daisy Wreath Bowl
- \_\_\_\_\_ 352. P - 7¼" N Grape & Cable Plate - Smooth Back - Scarce Size
- \_\_\_\_\_ 353. Clear Irid - Shinola Shoe Polish Novelty Bottle
- \_\_\_\_\_ 354. W - Hammered Bell Light Shade - Nicely Irid.
- \_\_\_\_\_ 355. BA - Sunflower Basket Hat Pin
- \_\_\_\_\_ 356. BA - Beaded Ball Hat Pin w/Multi Elec. Beads
- \_\_\_\_\_ 357. Clear Irid - Heavy Shell Console Bowl
- \_\_\_\_\_ 358. Aqua Flashed - Butterfly Pin Dish
- \_\_\_\_\_ 359. AO - N Drapery Rose Bowl - Always in Demand
- \_\_\_\_\_ 360. Dark IB - Fine Cut & Roses Rose Bowl w/Fancy Int. - Buffed Ft.
- \_\_\_\_\_ 361. A - Strutting Peacock Sugar Bowl wo/Lid
- \_\_\_\_\_ 362. B - 9¼", 8-Ruffle Butterfly & Berry Master Bowl - Small Chip One Foot
- \_\_\_\_\_ 363. B - Ball Ftd. 9¼", 8-Ruffle Two Flowers Bowl - Neat Size
- \_\_\_\_\_ 364. B - Ball Ftd. 10", 8-Ruffle Stag & Holly Bowl
- \_\_\_\_\_ 365. Scarce B - 10¼", 6-Ruffle Ten Mums Bowl
- \_\_\_\_\_ 366. G - Mlbg. Hanging Cherries Butter Dish Lid Only
- \_\_\_\_\_ 367. A - 11¼" Imp. Heavy Grape Chop Plate
- \_\_\_\_\_ 368. P - Imp. Grape Decanter - No Stopper
- \_\_\_\_\_ 369. P - N Singing Birds Water Pitcher
- \_\_\_\_\_ 370. P - N Acorn & Burrs Punch Bowl Base Only
- \_\_\_\_\_ 371. Beautiful B - Ten Mums Tumbler - Small Base Nick
- \_\_\_\_\_ 372. P - Dugan Peacock at Fountain Tumbler
- \_\_\_\_\_ 373. B - Beaded Stork in rushes Tumblers - Choice A, B, C or D
- \_\_\_\_\_ 373A. Celeste B - Concave Dia. Tankard Pitcher w/Lid - Pitcher Cracked
- \_\_\_\_\_ 374. Celeste B - Concave Dia. Tumblers - Choice Up to 10
- \_\_\_\_\_ 375. Super Dark M - Squatty 7½" Imp. Ripple Vase
- \_\_\_\_\_ 376. P - Big Basketweave, 3¾" Squatty Vase or Fruit Bowl Vase
- \_\_\_\_\_ 377. P - N 7" Squatty Tree Trunk Vt. Vase
- \_\_\_\_\_ 378. IG - 7½" N Drapery Vase
- \_\_\_\_\_ 379. Russet - 11½" Four Pillars Vase w/Rib Int.
- \_\_\_\_\_ 380. G - 12¾" Imp. Ripple Vase
- \_\_\_\_\_ 381. B - 10" Rustic Vase w/CRE Top

- \_\_\_\_\_ 382. Crystal - 15½" Feathers Vase w/Speigels Adv. on Base
- \_\_\_\_\_ 383. A - 15½" Mlbg. Hobnail Vt. or Rustic Vt. Vase - 4" Base, 6" Flame Top
- \_\_\_\_\_ 384. A - 15¾" Sunny Rustic Vase - 4" Base, 5" Top
- \_\_\_\_\_ 385. Amber - Contemporary Smith Glass Ohio Star Vase - 9"
- \_\_\_\_\_ 386. Smoke - Imp. IG 9½" Hobstar & Fan Vase - Contemporary
- \_\_\_\_\_ 387. M - Imp. IG 6" LaBella Rose, Rose Vase
- \_\_\_\_\_ 388. Teal Opal - 4¼" Spittoon Vase - Unique Pc.
- \_\_\_\_\_ 389. AO - Hobnail Tumblers, Sgn. Fenton - Choice \$ ea of 4
- \_\_\_\_\_ 390. B - Contemporary Natulis Toothpick Holder

 **THANK YOU FOR  
ATTENDING THE AUCTION**

## CARNIVAL GLASS AUCTIONS CALENDAR OF EVENTS

**Saturday, August 19, 2000**

Boonville, MO - Alabama Collection

**Saturday, October 14, 2000**

Wichita, KS - ACCGA

**For Free Color Catalogs & Information Write:**


**Mickey Reichel**

**516 Third Street, Boonville, MO 65233-1536**

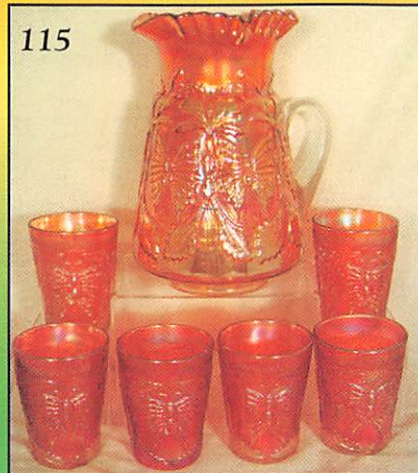
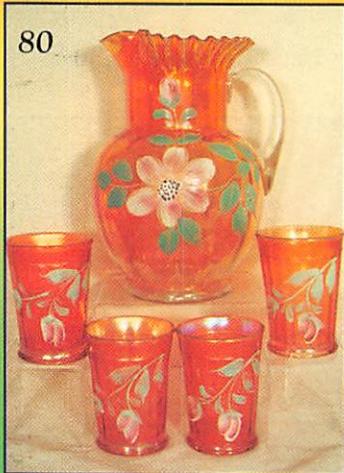
**or Call: 660-882-5292 days or**

**660-882-5283 evenings**

**FALL BOOKING NOW!  
CALL TODAY TO SELL YOUR  
GLASS FOR YEAR 2000  
1 PC. OR 1000+ PCS.**

 **P.S. We also do fine  
antiques at auction.**





**MICKEY REICHEL**  
**ANTIQUÉ & AUCTION, L.C.**  
516 THIRD STREET  
BOONVILLE, MO 65233-1536

PRESORTED  
FIRST CLASS MAIL  
US POSTAGE PAID  
SEDALIA, MO  
PERMIT 217

FIRST CLASS MAIL

SPECIAL INVITATION TO:

