

# CARNIVAL GLASS AUCTION

Saturday, April 8, 2000 9:00 a.m.

Mickey Reichel Antique & Auction L.C.

Held Inside the Mickey Reichel Auction Center, Boonville, Missouri

Office: 660-882-5292 • Home: 660-882-5283



Direct e-mail: [mreichel@undata.com](mailto:mreichel@undata.com)



## THE ARMSTRONG COLLECTION ETAL.



266



120



219



300



230



42



100



265



100



# NO BUYERS PREMIUM

## Held Inside the Mickey Reichel Auction Center

1 Mile North of I-70 on Hwy. 5, Exit 101, Boonville, Missouri • 20 Miles West of Columbia, MO on I-70  
Preview Friday 12 p.m. - 6 p.m. and 7:30 a.m. - 9:00 a.m. Day of Auction

Make Reservations EARLY at one of these local motels:

Days Inn: 660-882-8624 • Comfort Inn: 660-882-5317 • Super 8: 660-882-2900

### Auction Consists of Rarity, Great Irid. and Variety

**WRITE IN BIDS:** If you are unable to attend the auction, we will be happy to accept absentee bids which must be received by THURSDAY, APRIL 6, 2000. Don't Delay.

**FOR AUCTION PRICE RESULTS:** Send \$3.00 and Large S.A.S.E. to 516 Third Street, Boonville, MO 65233-1536

**PLEASE NOTE:** There is a \$5 handling charge for each successful bid which will be added to the selling price for all write-in bids. This is in addition to the cost of postage, insurance and packing. Your write-in bid will be entered just as if you are present and bidding. Successful bidders will be notified in 1 to 3 days by the auctioneer (so be sure to include your phone number). Direct mail bids to Auctioneer Mickey Reichel, 516 Third Street, Boonville, MO 65233-1536. Terms: Cash or Check accepted with proper I.D. and Social Security Number and References. Announcements made day of the auction supercede all printed material. Not Responsible for Accidents or Sold Items.

No return on any items once they leave the Auction Center (No Exceptions).\*\*\*\*

☛ Call for additional information: 660-882-5292 days or 660-882-5283 evenings before 9:00 p.m.

**FAX: 660-882-5292 (evening hours start FAX transmission after beep)**

**MAIL BIDS:** Items are bid on in perfect condition with average or above iridescence OR as listed in the brochures. Bids will not be carried out when damage on an item has been found during the auction.

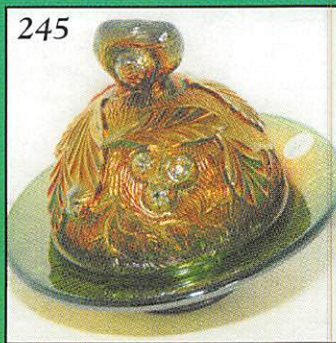
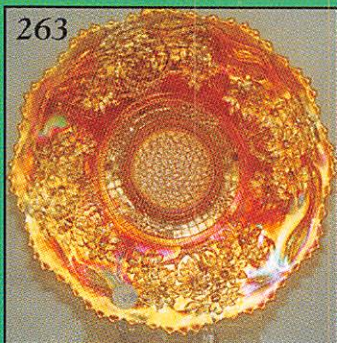
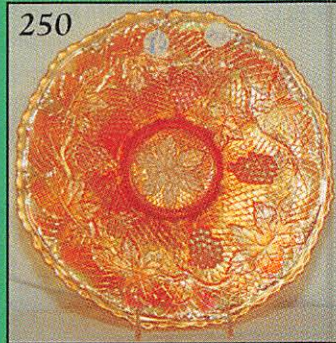
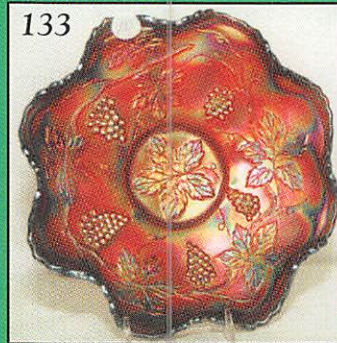
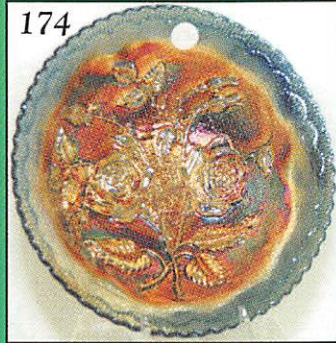
☛ **PEOPLE PRESENT AT AUCTION ARE RESPONSIBLE FOR FINDING ANY PINHEADS, WEAR, SPOTTINESS, MANUFACTURER'S DEFECTS OR ANY OTHER MINOR FLAWS, ETC.**

☛ **NOTE: Read each line, as we have accentuated the type of no particular piece, all are special.**

### THANK YOU FOR ATTENDING TODAY

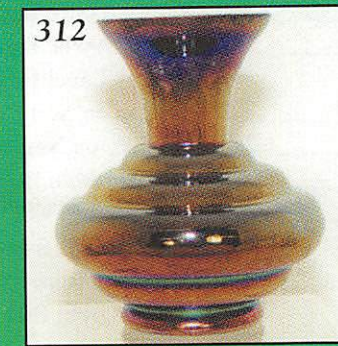
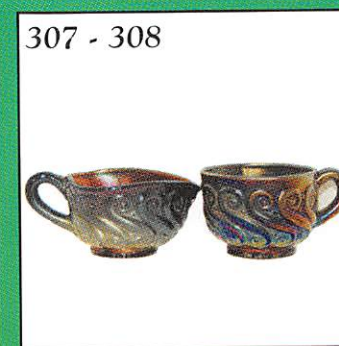
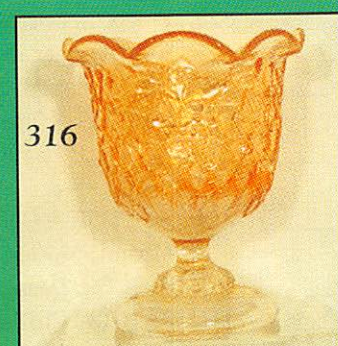
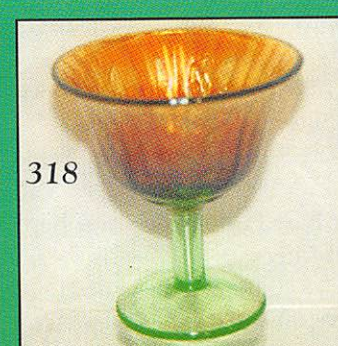
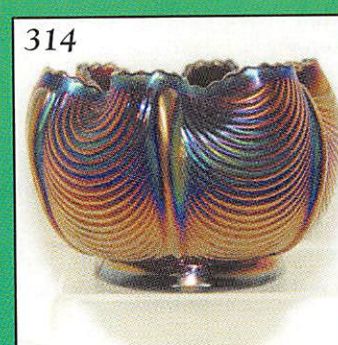
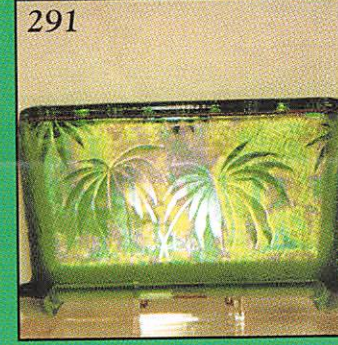
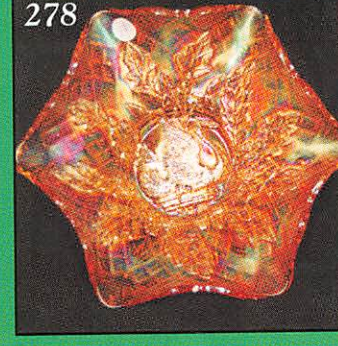
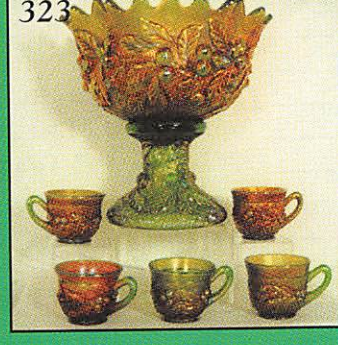
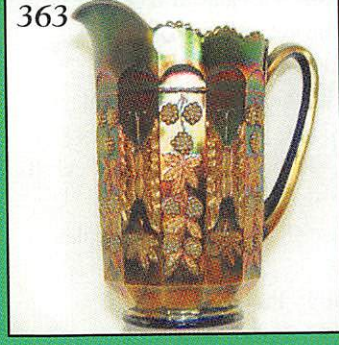
- |       |  |       |  |
|-------|--|-------|--|
| _____ | 1. M - <u>N</u> 9½" Thin Rib Vase  | _____ | 15. RARE Red Slag - Collar Base 9" Peacock & Grape Bowl                |
| _____ | 2. M - <u>N</u> 8¼" Thin Rib Vt. Vase  | _____ | 16. M - 9" Ruffle Collar Base Peacock & Grape Bowl                     |
| _____ | 3. A - 11¼" Long Thumbprint Vase   | _____ | 17. Rare M - 7¼" Deep Collar Base, 8 Ruffle Peacock & Grape (Nut) Bowl |
| _____ | 4. M - 11" Ripple Vase   | _____ | 18. Outstanding G - Collar Base 9" Ruffle Peacock & Grape Bowl         |
| _____ | 5. Teal - 10" Corinth Vase   | _____ | 19. G - 9", 3 in 1 Edge Fenton Coin Dot Bowl - Great Example           |
| _____ | 6. 10¾" Dia. Rib Vase  | _____ | 20. P - <u>N</u> 11" Tree Trunk Vase                                   |
| _____ | 7. M - 7¼" Beaded Bullseye Vase, 6" wide top, Choice A or B                  | _____ | 21. P - 9¼" Tree Trunk Vase  |
| _____ | 8. B - 15" Spearhead & Rib Vase - Choice A or B                              | _____ | 22. G - 12" Fenton Plume Panel Vase - A or B                           |
| _____ | 9. M - 10¼" Rustic Vase  | _____ | 23. B - Cobalt Fenton 15¼" Fine Rib Vt. Vase                           |
| _____ | 10. Amber - Imp. Loganberry Vase - <u>SUPER, SUPER</u> Example               | _____ | 24. Smoke - 11½" Imp. Parlor Panels Vase - Radium Beauty               |
| _____ | 11. P - 9" Spt. Ftd. Grape & Cable Meander Plate                             | _____ | 25. P - <u>N</u> 6¼" Dia. Points Squatty Vase - 5" Top, 3½" bottom     |
| _____ | 12. P - 8¾" Ruffled <u>N</u> Grape & Cable Vt. Smooth Back Bowl - Pretty One | _____ | 26. M - <u>N</u> 9¼" Dia. Points Squatty Vase                          |
| _____ | 13. P - 8¼" Ruffled Greek Key Basketweave Bowl - Scarce                      | _____ | 27. M - <u>N</u> 9" Dia. Points Squatty Vase - Clear Base              |
| _____ | 14. P - Spt. Ftd. 3-Fruits Med. Bowl - Pretty & Stretchy                     | _____ | 28. M - Extra Nice Radium Mary Ann Vase - Scarce                       |
|       |  | _____ | 29. M - <u>N</u> 9¼" Tree Trunk Vase                                   |

- \_\_\_\_\_ 30. G - N 8<sup>3</sup>/<sub>4</sub>" Star Base Tree Trunk Vt. Vase
- \_\_\_\_\_ **31. Super P - 11<sup>1</sup>/<sub>4</sub>" Dugan Target Vase**
- \_\_\_\_\_ 32. G - Beautiful Radium N 9<sup>3</sup>/<sub>4</sub>" Leaf Column Vase
- \_\_\_\_\_ **33. RARE 10" - Elec. B - N Tree Trunk Vase**
- \_\_\_\_\_ 34. RARE Flashed M - Americana Fostoria Vase - 5<sup>3</sup>/<sub>4</sub>" Tall, 3<sup>3</sup>/<sub>4</sub>" Top & Bottom - Few Known
- \_\_\_\_\_ **35. M - Flashed Americana Breakfast Cream & Sugar**
- \_\_\_\_\_ 36. P - Imp. Flute Toothpick Holder - Extra Nice
- \_\_\_\_\_ **37. G - Imp. Flute Toothpick Holder - Rare & Colorful**
- \_\_\_\_\_ 38. M - Imp. Flute Toothpick Holder - Beautiful w/tiny Nick on Side Base
- \_\_\_\_\_ **39. B - Ruffled Good Luck Bowl w/Rib Back - Elec. Highlights**
- \_\_\_\_\_ 40. B - PCE Good Luck Bowl w/Rib Back - Beautiful Multi Elec.
- \_\_\_\_\_ **41. P - PCE Good Luck Bowl w/Rib Back - Beautiful Multi Elec.**
- \_\_\_\_\_ 42. Pastel M - Stippled Ruffled Good Luck Bowl w/Rib Back - Super Pastel Example
- \_\_\_\_\_ **43. RARE M - 8-Ruffle Good Luck Vt. Bowl w/Basket Weave Ext. - Extra Dark**
- \_\_\_\_\_ 44. M - 8-Ruffle Collar Base Peacock & Grape Bowl
- \_\_\_\_\_ **45. B - 9", 6-Ruffle Heart & Vine Bowl**
- \_\_\_\_\_ 46. A - 10<sup>1</sup>/<sub>2</sub>", 6-Ruffle Little Flowers Bowl - Scarce Color
- \_\_\_\_\_ **47. G - 9", 6-Ruffle Fenton Vintage Bowl - Extra Pretty**
- \_\_\_\_\_ 48. M - 9", 6-Ruffle Fenton Vintage Bowl - Extra Pretty
- \_\_\_\_\_ **49. Rich M - 7<sup>1</sup>/<sub>2</sub>", 8-Ruffle Fenton Acorn Bowl**
- \_\_\_\_\_ 50. Pretty B - 7<sup>1</sup>/<sub>2</sub>", 8-Ruffle Fenton Acorn Bowl
- \_\_\_\_\_ **51. B - Cosmos Vt. 9<sup>1</sup>/<sub>2</sub>" Round ? Plate or Bowl - 2" Off Table**
- \_\_\_\_\_ 52. M - 10<sup>1</sup>/<sub>4</sub>", 6-Ruffle Cosmos Vt. Bowl
- \_\_\_\_\_ **53. M - Dugan Cherries Ftd. Bowl - Int. & Ext.**
- \_\_\_\_\_ 54. PO - 8<sup>1</sup>/<sub>2</sub>" Dugan Cherries Bowl - Enameled Interior w/Ten Ruffles - Super Unusual
- \_\_\_\_\_ **55. PO - 9", 10-Ruffle Caroline Bowl - Smooth Interior**
- \_\_\_\_\_ 56. PO - 7<sup>1</sup>/<sub>2</sub>" Rd., CRE, Single Flower Bowl - Rayed Int.
- \_\_\_\_\_ **57. PO - 10<sup>1</sup>/<sub>2</sub>" Great Peddle & Fan Bowl - Jeweled Heart Exterior - Great Find - 6-Ruffle**
- \_\_\_\_\_ 58. Scarce PO - 8-Ruffle Low Ski Star & Compass Bowl - Farmyard Size Bowl
- \_\_\_\_\_ **59. PO - 5<sup>3</sup>/<sub>4</sub>", 6-Ruffle Ski Star & Compass Berry Bowl - 4 x S**
- \_\_\_\_\_ 60. B - Deep 9" Ball Ftd. Ruffled Stay & Holly Bowl - Nut Bowl Shape
- \_\_\_\_\_ **61. M - Deep 9" Ball Ftd. Ruffled Stay & Holly Bowl - Nut Bowl Shape**
- \_\_\_\_\_ 62. B - 10<sup>3</sup>/<sub>4</sub>" IC Shape Ball Ftd. Stag & Holly Bowl
- \_\_\_\_\_ **63. G - 9", 6-Ruffle Fenton Vintage Bowl**
- \_\_\_\_\_ 64. Scarce B - 9<sup>1</sup>/<sub>2</sub>" Rd. Ftd. Butterfly & Berry Master Bowl
- \_\_\_\_\_ **65A. Scarce B - 5" Rd. Ftd. Butterfly & Berry Sauce Bowl - A or B**
- \_\_\_\_\_ **65. Scarce B - 10<sup>1</sup>/<sub>2</sub>" Ball Ftd. 8-Ruffle Little Flowers Master Fruit Bowl**
- \_\_\_\_\_ 66. B - Orange Tree Ftd. Orange Bowl
- \_\_\_\_\_ **67. M - 9" Ruffled Deep Ball Ftd. Chrysanthemum Windmills Bowl**
- \_\_\_\_\_ 68. Scarce M - Thistle Banana Bowl - Waterlily & Cattail Ext.
- \_\_\_\_\_ **69. Extra Nice G - Fenton Deep Ball ftd. Grape & Cable Fruit Bowl**
- \_\_\_\_\_ 70. Multi Elec. B - Persian Med. Lg. Grape & Cable Fruit Bowl - Super
- \_\_\_\_\_ **71. B - Gothic & Grape Spooner**
- \_\_\_\_\_ 72. Scarce P - N 4<sup>1</sup>/<sub>2</sub>" Rd. Grape & Cable Ped. Sherbet
- \_\_\_\_\_ **73. B - Orange Tree Breakfast Creamer**
- \_\_\_\_\_ 74. Cobalt B - 9" Collar Base 8-Ruffle Chrysanthemum Windmill Bowl - Very Scarce
- \_\_\_\_\_ **75. M - 9" Collar Base 8-Ruffle Chrysanthemum Windmill Bowl**
- \_\_\_\_\_ 76. P - N Fruits & Flowers Ped. Bon Bon
- \_\_\_\_\_ **77. M - Persian Med. - 4-Sides Up Bon Bon - Very Nice**
- \_\_\_\_\_ 78. Scarce A - 5<sup>3</sup>/<sub>4</sub>" Fenton Tri-Corner Peacock Tail Plate
- \_\_\_\_\_ **79. A - N PCE 3-Fruits Bowl - Smooth Ext.**
- \_\_\_\_\_ 80. A - N PCE Strawberry Bowl - Basketweave Ext.
- \_\_\_\_\_ **81. A - 8-Ruffle N Strawberry Bowl**
- \_\_\_\_\_ 82. P - 10", 8-Ruffle N Scarce Wild Strawberry Bowl w/Plain Ext.
- \_\_\_\_\_ **83. A - 8<sup>3</sup>/<sub>4</sub>" PCE N Grape & Cable Basketweave Bowl**
- \_\_\_\_\_ 84. P - N Grape & Cable Sweetmeat Compotes w/lid - A or B - Your Choice
- \_\_\_\_\_ **85. P - N Grape & Cable Cracker Jar - Old Favorite Pattern**
- \_\_\_\_\_ 86. P - N Grape & Cable 7 pc. Water Set
- \_\_\_\_\_ **87. G - N Grape & Cable 7 pc. Water Set**
- \_\_\_\_\_ 88. M - N Grape & Cable Water Pitcher
- \_\_\_\_\_ **89. M - N Grape & Cable Tumblers - Ch. A, B, C, D**
- \_\_\_\_\_ 90. P - N Grape & Cable Cologne Bottle - A or B
- \_\_\_\_\_ **91. P - Grape & Cable Candlesticks - 2 x S**
- \_\_\_\_\_ 92. P - Grape & Cable Powder Jar w/Lid
- \_\_\_\_\_ **93. P - Grape & Cable Oval Pin Tray - Scarce**
- \_\_\_\_\_ 94. P - Grape & Cable Sugar Bowl w/Lid - Multi Elec.
- \_\_\_\_\_ **95. P - Grape & Cable Creamer**
- \_\_\_\_\_ 96. P - Grape & Cable Butter Dish
- \_\_\_\_\_ **97. P - Grape & Cable Thumbprint Rd. Master Berry Bowl**
- \_\_\_\_\_ 98. P - N Grape & Cable Thumbprint 5" Berry Dish
- \_\_\_\_\_ **99. Beautiful P - N Grape & Cable Ruffled Fruit Bowl - 11" Dia, 6" Tall**



- \_\_\_\_\_ 100. Outstanding N P - Master Grape & Cable Punch Bowl & Base w/11 cups
- \_\_\_\_\_ 101. **RARE P - N Grape & Cable 7 pc. Whiskey Set**
- \_\_\_\_\_ 102. P - N Grape & Cable Breakfast Set
- \_\_\_\_\_ 103. **RARE P - Super N Grape & Cable Banded Hat Pin Holder - Roughness 1 Ft. - Very Pretty**
- \_\_\_\_\_ 104. Em. G - Super N Grape & Cable Hat Pin Holder
- \_\_\_\_\_ 105. **P - N Grape & Cable Tumbler - Choice A, B, C**
- \_\_\_\_\_ 106. P - N Acorn & Burrs Tumbler - Extra Nice Example
- \_\_\_\_\_ 107. **P - N Singing Birds Tumbler**
- \_\_\_\_\_ 108. B - N Peacock at Fountain Tumbler
- \_\_\_\_\_ 109. **M - Lattice & Daisy Tumbler**
- \_\_\_\_\_ 110. M - Radium, Tree of Life Tumbler - Rare
- \_\_\_\_\_ 111. **B - God & Home Tumbler - Scarce**
- \_\_\_\_\_ 112. B - Apple Tree Tumbler
- \_\_\_\_\_ 113. **M - Imp. Grape Tumblers - Choice A or B**
- \_\_\_\_\_ 114. Scarce M - Fishermans Mug
- \_\_\_\_\_ 115. **P - Fishermans Mug**
- \_\_\_\_\_ 116. Super G - N Singing Birds Water Pitcher - Beautiful & Scarce - WOW!
- \_\_\_\_\_ 117. **G - N Singing Bird Tumblers - Ch. A, B, C, D, E, F**
- \_\_\_\_\_ 118. M - N Raspberry 7 pc. Water Set - Nice Set
- \_\_\_\_\_ 119. **P - Imp. Multi Elec. Dia. Lace Water Pitcher**
- \_\_\_\_\_ 120. Topaz Vas. - W Concave Dia. 7 pc. Water Set - Rare
- \_\_\_\_\_ 121. **B - 9", 3 in 1 Edge Ribbon Tie Low Ruffled Plate**
- \_\_\_\_\_ 122. W - Fenton Holly Plate - 9 1/2"
- \_\_\_\_\_ 123. **B - J.I.P., CRE Fenton Holly Hat**
- \_\_\_\_\_ 124. B - 9", 8-Ruffle Fenton Holly Bowl
- \_\_\_\_\_ 125. **B - 9", 3 in 1 Fenton Holly Bowl - Scarce Shape**
- \_\_\_\_\_ 126. G - Spt. Ftd. Ruffle Dragon & Lotus Bowl
- \_\_\_\_\_ 127. **RARE G - 7 1/2" Rd. Deep Autumn Acorns Nut Bowl - Epoxy on Base - Still A Great Find**
- \_\_\_\_\_ 128. Scarce A - Fenton Ruffled Peacock at Urn Bowl
- \_\_\_\_\_ 129. **M - 4-Sided Pond Lily Bon Bon**
- \_\_\_\_\_ 130. W - 2-Sided Card Tray Shaped Bon Bon - Pond Lily
- \_\_\_\_\_ 131. **B - 2-Sided Persian Med. Card Tray Bon Bon**
- \_\_\_\_\_ 132. G - 9 1/4" Fenton 3-Fruits Plate - 12 Sided
- \_\_\_\_\_ 133. **Super Red - 8 3/4", 8-Ruffle Fenton Vintage Bowl**
- \_\_\_\_\_ 134. Amberina Red - JIP, 2 Row OE Hat
- \_\_\_\_\_ 135. **Red - 2-Sides Up 2 Row OE Hat**
- \_\_\_\_\_ 136. Teal - 6" Scales Plate
- \_\_\_\_\_ 137. **M - Butterfly & Berry Sugar Bowl w/Lid**
- \_\_\_\_\_ 138. A - Fenton 10", 6-Ruffle Feathered Serpent Bowl - Scarce Color
- \_\_\_\_\_ 139. **B - Fenton Peacock & Urn Ruffled Compote - Nice Example**
- \_\_\_\_\_ 140. A - 9 1/4" Mlbg. ICS Peacock & Urn Bowl - Bee, No Beads
- \_\_\_\_\_ 141. **G - N PCE Grape & Cable Basketweave Bowl - Greens, Pinks, Golds**
- \_\_\_\_\_ 142. P - N Ruffled Blossom Time Compote
- \_\_\_\_\_ 143. **Scarce P - 7-Ruffle Dugan Leaf Rays Nappy**
- \_\_\_\_\_ 144. P - Spt. Ftd. Ruffled 3-Fruits Med. Bowl - Multi Elec. - Dandy
- \_\_\_\_\_ 145. **B - 14 1/4" Spearhead & Rib Fenton Vase**
- \_\_\_\_\_ 146. Beautiful W - 10" Dugan Big Basketweave Vase
- \_\_\_\_\_ 147. **RARE W - 8" Imp. Morning Glory Bud Vase**
- \_\_\_\_\_ 148. W - Mlbg. 16" Hobnail Vt. Swung Vase - 9 CRE Flame Tips - RARE - Rustic Vt.?
- \_\_\_\_\_ 149. **M - 6 1/4" Paneled Dia. & Bows Vase - Detailed Pumpkin Example**
- \_\_\_\_\_ 150. B - 6 3/4" Paneled Dia. & Bows Vase - Beautiful Detailed Ex.
- \_\_\_\_\_ 151. **M - 5 1/4" Scarce Thin Rib & Drape Vase**
- \_\_\_\_\_ 152. G - 5 1/2" Mini Morning Glory Vase - Beautiful Ex.
- \_\_\_\_\_ 153. **Teal G - 10" Fenton Fine Rib Vase - Super Color**
- \_\_\_\_\_ 154. G - 9 1/2" Butterfly & Berry Vase - Radium Elec.
- \_\_\_\_\_ 154A. M - 7 3/4" Imp. Beaded Bullseye Vase - 5 1/2" Flared Top
- \_\_\_\_\_ 155. **B - 8" Drapery Vt. N Vase - Radium Elec.**
- \_\_\_\_\_ 156. Lt. B or Saph. - 8 3/8" Drapery Vt. Ftd. Vase
- \_\_\_\_\_ 157. **P - 11 3/4" Lined Lattice Vase - Radium Multi Elec.**
- \_\_\_\_\_ 158. P - 8 3/4" Lined Lattice Vase - Multi Elec.
- \_\_\_\_\_ 159. **A - 16 1/2" Mlbg. Hobnail Vt. Swung Vase**
- \_\_\_\_\_ 160. A - 13" Star Base, 4-Pillar Vase - Radium
- \_\_\_\_\_ 161. **RARE Amber - 10" CRE Knotted Beads Vase - Super Find**
- \_\_\_\_\_ 162. Ice G - 6 1/4", 2-Row, OE Basketweave, 2-Sides Up Basket - Glows Wild
- \_\_\_\_\_ 163. **W - 6", 6-Ruffle 2-Row OE Basket**
- \_\_\_\_\_ 164. BA - 5 1/2", 2-Row OE Basket - 2-Sides Up
- \_\_\_\_\_ 165. **M - John Brand Co., 6", 2-Row OE Basket - 2-Sides Up**
- \_\_\_\_\_ 166. P - 5" Rd., Imp. Windmill, Deep, Sauce Bowl - Super Elec.
- \_\_\_\_\_ 167. **PO - 4 1/2" Deep Rd. Garden Path Vt. Sauce Bowl**
- \_\_\_\_\_ 168. M - Kittens Cup
- \_\_\_\_\_ 169. **Flashed M - Enamel Decorated Blown Glass Cruet**
- \_\_\_\_\_ 170. B - Ruffled N Peacocks Bowl - Ribbed Ext. - Beautiful Example
- \_\_\_\_\_ 171. **A - PCE, N, Good luck Rib Back Bowl - Multi Soft Irid.**
- \_\_\_\_\_ 172. P - N Ruffle Good Luck Bowl - Basketweave Ext. - Rich Irid.
- \_\_\_\_\_ 173. **M - Lg. ICS Mikado Compote - Pink & Blue Irid.**
- \_\_\_\_\_ 174. Rare Imp. B - 9" Rd. Open Rose Bowl - Pretty & Rare Color
- \_\_\_\_\_ 175. **Rare N G - Wild Flower Compote - Few Known**
- \_\_\_\_\_ 176. Ice G - Brocaded Palms Bon Bon
- \_\_\_\_\_ 177. **Ice B - Brocaded Acorns Bon Bon**
- \_\_\_\_\_ 178. Red - Persian Med. 4-Sides Up Bon Bon - Great Example
- \_\_\_\_\_ 179. **RARE Red - Stippled Rays Imp. Whimsey - Open Sugar - Few Known**
- \_\_\_\_\_ 180. Rich Amber - Imp. Stippled Rays Sugar Bowl - Rare


- \_\_\_\_\_ 181. BA - 5¼", 12-Ruffle Australian Kingfisher Sauce or Nappy
- \_\_\_\_\_ 182. Lav. - Imp. 9" Ruffled Scroll Embossed Bowl w/File Ext. - WOW!
- \_\_\_\_\_ 183. G - Mlbg. 3 in 1, 6" Blackberry Wreath, Radium, Sauce Bowl
- \_\_\_\_\_ 184. G - Mlbg. 9½" Ruffled Holly Whirl Bowl - Radium Beauty
- \_\_\_\_\_ 185. M - 10¼", 6-Ruffle, Rosaline Bowl - Satin w/Pink Hi-lites
- \_\_\_\_\_ 186. G - Imp. 8" Rd. Acanthus Bowl - Pretty Example
- \_\_\_\_\_ 187. P - N Rd. Bushel Basket
- \_\_\_\_\_ 188. B - N Fruits & Flowers Ped. Bon Bon - Multi Elec.
- \_\_\_\_\_ 189. Scarce G - Fenton Flowers Rose Bowl
- \_\_\_\_\_ 190. P - N Butterfly & Rays Bon Bon - Beautiful
- \_\_\_\_\_ 191. P - N Grape & Cable Spooner - Base Nick
- \_\_\_\_\_ 192. B - Fenton Little Strawberry Bon Bon - Very Pretty
- \_\_\_\_\_ 193. G - 4¼" Rd. N Acorn & Burrs Berry Dish
- \_\_\_\_\_ 194. B - N Leaf & Beads Rose Bowl - Scarce & Pretty
- \_\_\_\_\_ 195. Gorgeous W - 9", 10-Ruffle Dugan Double Stem Roses Bowl - Real Beauty
- \_\_\_\_\_ 196. M - Mlbg. 3 in 1 Rosalind Bowl - Scarce Shape - Satin
- \_\_\_\_\_ 197. G - Mlbg. 7¾", 6-Ruffle Little Stars Bowl - Beautiful Irid
- \_\_\_\_\_ 198. B - Fenton 9", 3 in 1, Holly Bowl - Scarce Shape
- \_\_\_\_\_ 199. B - 5¼", 6-Ruffle Ball Ftd. Two Flowers Bowl - Cutey!
- \_\_\_\_\_ 200. RARE Ice G - Dandelion Knight Templar Mug
- \_\_\_\_\_ 201. M - 7", 6-Ruffle Dk. Leaf Chin Bowl
- \_\_\_\_\_ 202. B - 8" Ruffled Spt. Ftd. Peacock & Grape Bowl
- \_\_\_\_\_ 203. M - 7 pc. Imp. Dia. Lace Berry Set - Scarce & Beautiful Match
- \_\_\_\_\_ 204. A - 8¼", 6-Ruffle Fenton Thistle Bowl - Scarce Color
- \_\_\_\_\_ 205. G - N Wild Rose Ftd. Bowl
- \_\_\_\_\_ 206. M - Fenton 8-Ruffle Peacock & Urn Bowl
- \_\_\_\_\_ 207. A - 8¾", 8-Ruffle Fenton Holly Bowl - Scarce & Pretty
- \_\_\_\_\_ 208. Em. G - 9½", 4-Flowers Vt. Plate - Super Color
- \_\_\_\_\_ 209. Amber - 8¾", 8-Ruffle Fenton Vintage Bowl - Rare Base Glass
- \_\_\_\_\_ 210. P - N 9" Stippled 3-Fruits Plate
- \_\_\_\_\_ 211. M - PCE Stippled 3-Fruits Bowl - Rib Ext. - Great Find
- \_\_\_\_\_ 212. G - N Ftd. Ruffled Wishbone Bowl
- \_\_\_\_\_ 213. Scarce M - 10-Ruffle, 8½" Brooklyn Bridge Bowl
- \_\_\_\_\_ 214. Red - JIP, CRE, Blackberry Spray Hat (2 Sets Berries) - Beauty
- \_\_\_\_\_ 215. Red - 6" JIP 2-Row OE Basket
- \_\_\_\_\_ 216. Amberina - 6-Ruffle Fenton Holly Hat
- \_\_\_\_\_ 217. Red - 10¼" Fenton Fine Rib Vase
- \_\_\_\_\_ 218. Amberina Red - 8½" Stretch Colonial Plate
- \_\_\_\_\_ 219. Red - Imp. 11½", 6-Ruffle Ftd. Open Rose Centerpiece Bowl
- \_\_\_\_\_ 220. B - N Ruffled Good Luck Bowl w/Rib Ext. (All Time Favorite)
- \_\_\_\_\_ 221. M - Dugan 8½", 10-Ruffle Double Stem Roses Bowl
- \_\_\_\_\_ 222. A - Dugan 8¼", 10-Ruffle Double Stem Roses Bowl
- \_\_\_\_\_ 223. P - N 9", 8-Ruffle Grape Leaves Bowl - Multi Elec.
- \_\_\_\_\_ 224. A - N 9", 8-Ruffle Grape Leaves Bowl - Light Irid.
- \_\_\_\_\_ 225. M - 10" Ball Ftd. 8-Ruffle Two Flowers Bowl
- \_\_\_\_\_ 226. M - 9" ICS Footed Lotus & Poinsettia Bowl
- \_\_\_\_\_ 227. P - 9" N Grape & Cable Basketweave Plate
- \_\_\_\_\_ 228. Deep B - 9" Collar Base, 8-Ruffle Dragon & Lotus Bowl
- \_\_\_\_\_ 229. A - 8¾" N 3-Fruits Plate w/Basketweave Ext.
- \_\_\_\_\_ ★230. P - 3 in 1 Edge, Farmyard Bowl - Super Yellow, Bronze w/Purple Hi-Lites - Rare Find
- \_\_\_\_\_ 231. M - 7" Grapevine Lattice Plate
- \_\_\_\_\_ 232. W - 6¼" Persian Garden Plate - Pool of Pearls Ext.
- \_\_\_\_\_ 233. Scarce G - Blackberry 5¾" 2-Row OE Basketweave Bowl - Beauty
- \_\_\_\_\_ 234. M - Fenton 7 pc. Ftd. Butterfly & Berry, Berry Set
- \_\_\_\_\_ 235. M - Butterfly & Berry Butter Dish w/Lid
- \_\_\_\_\_ 236. M - Butterfly & Berry Spooner
- \_\_\_\_\_ 237. M - Butterfly & Berry Sugar Bowl w/Lid
- \_\_\_\_\_ 238. M - N Peacock at Fountain Creamer with Pinks
- \_\_\_\_\_ 239. M - N Peacock at Fountain Sugar w/Lid
- \_\_\_\_\_ 240. M - N Peacock at Fountain Spooner w/Pinks
- \_\_\_\_\_ 241. M - Fenton Waterlily & Cattail Sugar w/Lid
- \_\_\_\_\_ 242. M - Fenton Waterlily & Cattail Spooner
- \_\_\_\_\_ 243. M - N Flute Butterdish w/Lid
- \_\_\_\_\_ 244. P - N Peacock at Fountain Butter Dish w/Lid
- \_\_\_\_\_ 245. G - N Acorn & Burrs Punch Bowl - Very Pretty & Scarce
- \_\_\_\_\_ 246. P - N Acorn & Burrs Punch Bowl - Very Pretty Example
- \_\_\_\_\_ 247. A - 6¼" Fern Brands Chocolates 2-Sides Up Plate - Irid. Worn
- \_\_\_\_\_ 248. M - N Grape & Cable Powder Dish w/Lid
- \_\_\_\_\_ 249. G - N Grape & Cable Powder Dish w/Lid - Very Scarce
- \_\_\_\_\_ 250. Rare M - 9½" Concord Plate - Factory Flaw on Edge
- \_\_\_\_\_ 251. P - N Oriental Poppy Tumblers - Ch. A, B, C, D, E
- \_\_\_\_\_ 252. A - Fenton 8", 8-Ruffle Spt. Ftd. Grape & Cable Bowl w/M-Overlay
- \_\_\_\_\_ 253. PO - 7" Dugan Cherries, Deep, 10-Crimp Ruffle Top, Plain Int. Bowl
- \_\_\_\_\_ 254. B - 6½", 4-Sided Pepper Plant Bowl
- \_\_\_\_\_ 255. G - 5¼", 6-Ruffle, Peacock Tail Bowl - Adv. on Back, Gen. Furn. 1910
- \_\_\_\_\_ 256. W - 8-Sided N Bushel Basket
- \_\_\_\_\_ 257. P - 8-Sides N Bushel Basket



- \_\_\_\_\_ 258. P - Rd. N Bushel Basket - Beautiful Example  
 \_\_\_\_\_ 259. **M - Rd. N Bushel Basket - Way Above Avg.**  
 \_\_\_\_\_ 260. Ice G - Rd. N Bushel Basket  
 \_\_\_\_\_ 261. **Blue Opal - Rd. N Bushel Basket - No Irid**  
 \_\_\_\_\_ 262. Pastel Ice Blue - 8-Sided, Rare, N Bushel Basket  
 \_\_\_\_\_ 263. **M - 9½" Orange Tree Plate - Super Multi Radium Beauty**  
 \_\_\_\_\_ 264. Rare G - Collar Base, 8¼" N Ruffle Stippled 3-Fruits Bowl  
 \_\_\_\_\_ 265. **HOT AO - Rare Poppy Pickle Dish**  
 \_\_\_\_\_ 266. B - N Poppy Show 9" Ruffle Bowl - Outstanding Ex.  
 \_\_\_\_\_ 267. **G - 10½" PCE N Grape & Cable, Deep, Salad Bowl - Scarce Color & Shape**  
 \_\_\_\_\_ 268. M - 10½" PCE N Grape & Cable, Deep, Salad Bowl - Chip on Base  
 \_\_\_\_\_ 269. **M - Peach & Pear Banana Bowl**  
 \_\_\_\_\_ 270. Scarce Square M - Mlbg. 9½" Rays & Ribbons Bowl  
 \_\_\_\_\_ 271. **M - 9¾", 6-Ruffled Mlbg. Rays & Ribbons Bowl**  
 \_\_\_\_\_ 272. A - Mlbg. Holly Sprig 2-Sides Up Deep Bon Bon  
 \_\_\_\_\_ 273. **M - Mlbg. 2-Sides Up Holly Whirl Bon Bon**  
 \_\_\_\_\_ 274. A - Mlbg. 9½" 6-Ruffle Holly Whirl Bowl  
 \_\_\_\_\_ 275. **G - Mlbg. 10", 6-Ruffle Whirling Leaves Bowl - Satin Finish**  
 \_\_\_\_\_ 276. A - Mlbg. 10", 2 in 1, Blackberry Wreath Bowl - Satin  
 \_\_\_\_\_ 277. **G - 6" Mlbg. 3 in 1 Blackberry Wreath Bowl - Radium Cutie!**  
 \_\_\_\_\_ 278. M - Mlbg., 6-Ruffle Nesting Swan Bowl - Satin  
 \_\_\_\_\_ 279. **P - N Fruits & Flowers Master Bowl - 5 Berry Bowls - Ruffles - 6 pc. Set**  
 \_\_\_\_\_ 280. M - 10", 8-Ruffle N Fruits & Flowers Master Bowl  
 \_\_\_\_\_ 281. **M - 11", 8-Ruffle N Grape & Cable Bowl w/Basketweave Ext.**  
 \_\_\_\_\_ 282. G - 9" Spt. Ftd. Grape & Cable Plate - Rare & Pretty  
 \_\_\_\_\_ 283. **A - N Ruffled 3-Fruits Bowl w/BW Ext.**  
 \_\_\_\_\_ 284. P - N 8½", 8-Ruffle Strawberry Bowl - BW Ext.  
 \_\_\_\_\_ 285. **P - N 9", 3-Fruits Plate w/BW Ext.**  
 \_\_\_\_\_ 286. P - Spt. Ftd. 8-Ruffle, 3-Fruits Med. Bowl  
 \_\_\_\_\_ 287. **A - N Butterfly & Rays Bon Bon**  
 \_\_\_\_\_ 288. Scarce A - 8½", 6-Ruffle Radium Pony Bowl  
 \_\_\_\_\_ 289. **M - 8½", 6-Ruffle Radium Pony Bowl**  
 \_\_\_\_\_ 290. M - 8½", 6-Ruffle Satin Pony Bowl  
 \_\_\_\_\_ 291. **G - Fostoria Brocaded Palms Planter w/Frog Insert - Label Intact on Base**  
 \_\_\_\_\_ 292. B - Hen on Nest Covered Dish  
 \_\_\_\_\_ 293. **M - Hen on Nest Covered Dish**  
 \_\_\_\_\_ 294. Rare M - Mini Hobnail, 8 pc. Cordial Set  
 \_\_\_\_\_ 295. **Also Rare M - Star & Fan Decanter Underplate & 4 Cordials from Britt Collection**  
 \_\_\_\_\_ 296. Rare M - Zipper Stitch Decanter Underplate & 5 Cordials from Britt Collection  
 \_\_\_\_\_ 297. **M - Golden Harvest Decanter w/Stopper**  
 \_\_\_\_\_ 298. M - Octagon Decanter w/Stopper  
 \_\_\_\_\_ 299. **M - Inverted Feather Cambridge Parfaits - A or B**  
 \_\_\_\_\_ ★300. ULTRA Rare Powder Blue? or Dk. IB - Ruffle Good Luck Bowl - Super Pretty - WOW!  
 \_\_\_\_\_ 301. **A - 8½", 3 in 1, Fenton Wild Blackberry Bowl - Very Scarce**  
 \_\_\_\_\_ 302. A - 9", 8-Ruffle Imp. Cobblestone Bowl - Sharp Edge Point  
 \_\_\_\_\_ 303. **Satin PM - 3 in 1 Trout & Fly Bowl - Open Bubble in Base**  
 \_\_\_\_\_ 304. PM - Hore? - Honey Amber - Ftd. N Poinsettia Ruffled Bowl  
 \_\_\_\_\_ 305. **Rich M - N 9" Peacocks Plate - Great One**  
 \_\_\_\_\_ 306. Rare Amber - Imp. 6-Sided Candlestick - A Beautiful Rarity - Few Known  
 \_\_\_\_\_ 307. **P - Rare S - Repeat Whimsey Creamer from Punch Cup**  
 \_\_\_\_\_ 308. P - S - Repeat Punch Cup  
 \_\_\_\_\_ 309. **Rare A - Cambridge, Sgn. Near Cut, Inverted Strawberry Spooner**  
 \_\_\_\_\_ 310. Scarce M - 7¼" JIP Formal Pattern Vase  
 \_\_\_\_\_ 311. **A - 6", 6-Ruffle, Isaac Bensch & Sons Adv. Bowl - Great!**  
 \_\_\_\_\_ 312. A - Radium Finish 5" Melon Rib Genie Vase - 1 or 2 Known  
 \_\_\_\_\_ 313. **P - N Drapery Rose Bowl - Base Chip**  
 \_\_\_\_\_ 314. Lav. P - N Drapery Rose Bowl - Really Neat  
 \_\_\_\_\_ 315. **M - N Drapery Rose Bowl - Also Scarce**  
 \_\_\_\_\_ 316. Light Radium PM - Daisy Squares, 5¼", 8-Ruffle, Celery Vase  
 \_\_\_\_\_ 317. **Lav. Pastel - Brocaded Acorns Bon Bon**  
 \_\_\_\_\_ 318. Rich Lime Vas. - Mini Fenton Holly Goblet Shape Compote - Glows Wild  
 \_\_\_\_\_ 319. **G - Wreath Roses Compote - Ruffled**  
 \_\_\_\_\_ 320. M - 2¾" African Shield Squatty Vase - 4¼" Top - Little Beauty  
 \_\_\_\_\_ 321. **IB - Grape & Cable Dresser Tray w/Chips on Edge - Rare Color**  
 \_\_\_\_\_ 322. W - N PCE Nippon Bowl w/RARE BW Ext.  
 \_\_\_\_\_ 323. **G - Rare N Acorn & Burrs Punch Bowl & Base w/5 Cups**  
 \_\_\_\_\_ 324. P - N Acorn & Burrs 7 pc. Water Set  
 \_\_\_\_\_ 325. **P - N Acorn & Burrs 9½" Rd. Master Berry Bowl - Super Pretty**  
 \_\_\_\_\_ 326. Outstanding M - N Acorn & Burrs 7 pc. Berry Set  
 \_\_\_\_\_ 327. **Rare M - N 7 pc. Flute Nut Set - Complete**  
 \_\_\_\_\_ 328. P - N Leaf Beads, Rare Rd. Top Rose Bowl - Floral Center  
 \_\_\_\_\_ 329. **B - 8¼" ICS Collar Base Peacock & Grape Bowl - Beautiful Elec. Hi-Lite**  
 \_\_\_\_\_ 330. P - N Ftd. Deep 7½", 8-Ruffle Wishbone Bowl  
 \_\_\_\_\_ 331. **P - N 10" Ruffled Wishbone Bowl - Collar Base**



- \_\_\_\_\_ 332. A - Outstanding Ruffled N Peacocks Bowl
- \_\_\_\_\_ 333. **B - N Ruffled Peacocks Bowl**
- \_\_\_\_\_ 334. B - N 5½" ICS Peacock & Urn Bowl
- \_\_\_\_\_ 335. **Scarce B - N Embroidered Mums Ruffled Bowl**
- \_\_\_\_\_ 336. B - N Stippled, Ruffled, Strawberry Bowl - A Beauty
- \_\_\_\_\_ 337. **B - PCE Good Luck Bowl w/Rib Ext. - Elec. Hi-Lights**
- \_\_\_\_\_ 338. Elec. B - N Fruits & Flowers Ped. Bon Bon
- \_\_\_\_\_ 339. **G - Imp. Flute Punch Cup**
- \_\_\_\_\_ 340. M - Imp. Flute Punch Cup - 2 x S
- \_\_\_\_\_ 341. **Scarce G - N Grape & Cable Punch Cup**
- \_\_\_\_\_ 342. Pastel IB - N Memphis Punch Cup
- \_\_\_\_\_ 343. **M - N Lustre Flute Punch Cup**
- \_\_\_\_\_ 344. M - 6", 6-Ruffle Ftd. Poinsettia & Lotus Berry Bowl
- \_\_\_\_\_ 345. **AO - Fenton LeVay Whimsey Butterfly & Berry Vase from Tumbler - 6 of 16**
- \_\_\_\_\_ 346. M - 6¼", 4-Sides Up Banded Blackberry Bowl
- \_\_\_\_\_ 347. **Clam - 6" Rd. Imp. Heavy Grape Bowl**
- \_\_\_\_\_ 348. Clam - 9" Imp. Grape Low Ruffle Plate
- \_\_\_\_\_ 349. **M - 5¾" JIP 2-Row OE Basket**
- \_\_\_\_\_ 350. M - 4" w/Lg. Rib Int. Squatty Vase - 6½" Fluted Top
- \_\_\_\_\_ 351. **G - Rd. 5½" Little Flowers Bowl**
- \_\_\_\_\_ 352. G - Fenton Iris 7" Ruffled Compote - Pretty Pattern
- \_\_\_\_\_ 353. **A - Dome Based 8", 10-Ruffle Dugan Double Stem Roses Bowl**
- \_\_\_\_\_ 354. P - N Ftd. Ruffled Rosette Bowl
- \_\_\_\_\_ 355. **P - N Sweet Meat Compote w/Lid - Tiny Int. Nick**
- \_\_\_\_\_ 356. Lime G - Imp. Grape Ruffled Compote
- \_\_\_\_\_ 357. **M - Banded Stork in Rushes Tumbler**
- \_\_\_\_\_ 358. M - 7¼" Morning Glory Bud Vase
- \_\_\_\_\_ 359. **Mm - 8½" Morning Glory JIP Swirl Vase**
- \_\_\_\_\_ 360. M - 10" French Knots Vase - 4¾" CRE Top
- \_\_\_\_\_ 361. **P - N Acorn & Burrs 4¾" Berry Bowl - 6 x S**
- \_\_\_\_\_ 362. P - N Acorn & Burrs Tumblers - 3 x S
- \_\_\_\_\_ 363. **B - Fenton Butterfly & Berry Water Pitcher - Rare, Nice Example**
- \_\_\_\_\_ 364. B - Fenton Butterfly & Berry Tumblers - A or B
- \_\_\_\_\_ 365. **B - Ftd. 9" Low Rd. Fantail Bowl - Butterfly & Berry Ext.**
- \_\_\_\_\_ 366. Great P - Multi Elec. 9¼" Low Ruffle Flowers & Frames Bowl - Dugan
- \_\_\_\_\_ 367. **IG Vas. - Rd. 5", 2-Row OE Bowl**
- \_\_\_\_\_ 368. B - 9¼" Rustic Vase - 4¾" CRE Top
- \_\_\_\_\_ 369. **A - 6½" Rd. Fenton Vintage Bowl - Scarce Shape**
- \_\_\_\_\_ 370. B - 5½" Rd. Persian Med. Berry Dish
- \_\_\_\_\_ 371. **M - Flashed - Golpher Ashtray**
- \_\_\_\_\_ 372. M - Flashed - Dutch Couple Ashtray
- \_\_\_\_\_ 373. **P - N 5" Rd. Grape & Cable Thumbprint Berry Bowl**
- \_\_\_\_\_ 374. M - Collar Base Ruffled Peacock & Grape Bowl
- \_\_\_\_\_ 375. **M - 8¼" Ruffled N Plain Int. Bowl w/Blossom & Shell Ext.**
- \_\_\_\_\_ 376. G - 8¼" Fenton 3 in 1 Coin Dot Bowl
- \_\_\_\_\_ 377. **M - 5", 6-Ruffle Imp. Sauce Dish**
- \_\_\_\_\_ 378. M - 5½" Rd. Imp. Flute Bowl
- \_\_\_\_\_ 379. **M - Orange Tree Punch Cup**
- \_\_\_\_\_ 380. M - Stork in Rushes Punch Cups - 2 x S
- \_\_\_\_\_ 381. **M - Fashion Punch Cup**
- \_\_\_\_\_ 382. M - Fenton Holly Ruffle Compote
- \_\_\_\_\_ 383. **M - 5¼", 6-Ruffle Fenton Stipple Ray Compote**
- \_\_\_\_\_ 384. P - Imp. Flute Creamer
- \_\_\_\_\_ 385. **A - Harvest Flower & Grape Wine**
- \_\_\_\_\_ 386. Contemporary Milk Glss - Westmoreland Santa/Sleigh Covered Dish

 **THANK YOU FOR  
ATTENDING THE AUCTION**

## CARNIVAL GLASS AUCTIONS CALENDAR OF EVENTS

**Saturday, May 6, 2000**

Boonville, MO - Northern Collection

**Saturday, October 14, 2000**

Wichita, KS - ACCGA

For Free Color Catalogs & Information Write:

Mickey Reichel

516 Third Street, Boonville, MO 65233-1536

or Call: 660-882-5292 days or

660-882-5283 evenings

**CALL TODAY TO SELL  
YOUR GLASS FOR  
YEAR 2000**

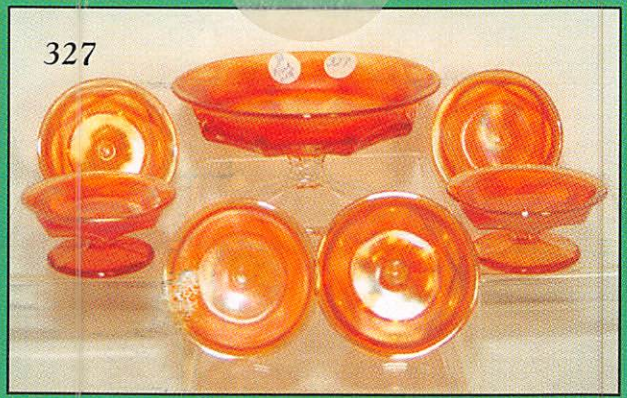
**1 PC. OR 1000+ PCS.**



33 - 156 - 155



306



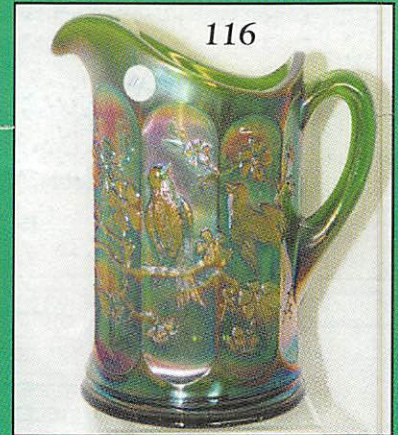
327



157 154 158



326



116

**MICKEY REICHEL**  
**ANTIQUE & AUCTION, L.C.**  
516 THIRD STREET  
BOONVILLE, MO 65233-1536

PRESORTED  
FIRST CLASS MAIL  
US POSTAGE PAID  
SEDALIA, MO  
PERMIT 217



101

FIRST CLASS MAIL

SPECIAL INVITATION TO:

