

CARNIVAL GLASS AUCTION

Saturday, March 11, 2000 9:00 a.m.

Mickey Reichel Antique & Auction L.C.

Held Inside the Mickey Reichel Auction Center

Office: 660-882-5292 • Boonville, Missouri • Home: 660-882-5283



Direct e-mail: mreichel@undata.com



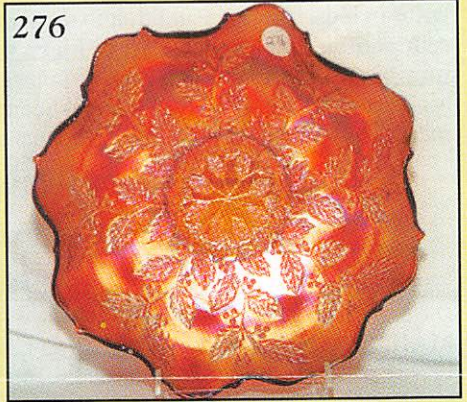
62



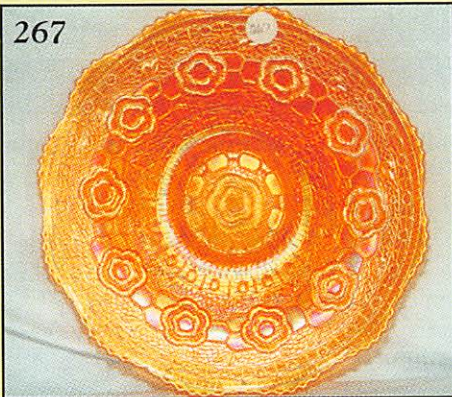
126



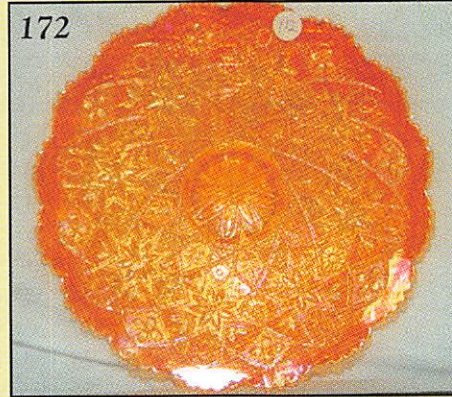
276



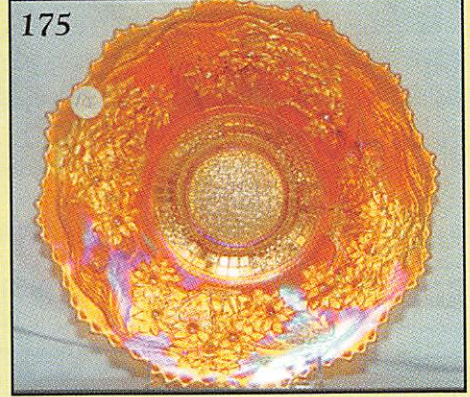
267



172



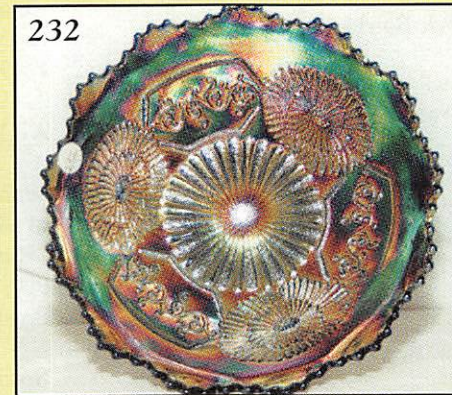
175



332



232



300



NO BUYERS PREMIUM

Held Inside the Mickey Reichel Auction Center

1 Mile North of I-70 on Hwy. 5, Exit 101, Boonville, Missouri • 20 Miles West of Columbia, MO on I-70
Preview Friday 12 p.m. - 6 p.m. and 7:30 a.m. - 9:00 a.m. Day of Auction

Make Reservations **EARLY** at one of these local motels:

Days Inn: 660-882-8624 • Comfort Inn: 660-882-5317 • Super 8: 660-882-2900

Auction Consists of Rarity, Great Irid. and Variety

WRITE IN BIDS: If you are unable to attend the auction, we will be happy to accept absentee bids which must be received by THURSDAY, MARCH 9, 2000. Don't Delay.

FOR AUCTION PRICE RESULTS: Send \$3.00 and Large S.A.S.E. to 516 Third Street, Boonville, MO 65233-1536

PLEASE NOTE: There is a **\$5 handling charge for each successful bid which will be added to the selling price** for all write-in bids. This is in addition to the cost of postage, insurance and packing. Your write-in bid will be entered just as if you are present and bidding. **Successful bidders will be notified in 1 to 3 days by the auctioneer (so be sure to include your phone number).** Direct mail bids to Auctioneer Mickey Reichel, 516 Third Street, Boonville, MO 65233-1536. Terms: Cash or Check accepted with proper I.D. and Social Security Number and References. Announcements made day of the auction supercede all printed material. Not Responsible for Accidents or Sold Items.

No return on any items once they leave the Auction Center (No Exceptions).****

Call for additional information: 660-882-5292 days or 660-882-5283 evenings before 9:00 p.m.

FAX: 660-882-5292 (evening hours start FAX transmission after beep)

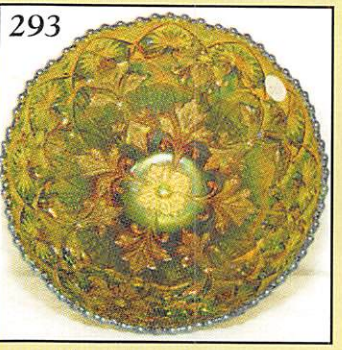
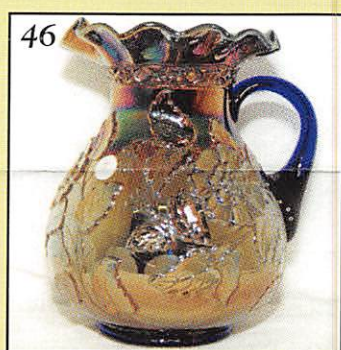
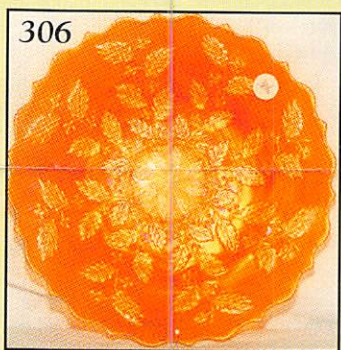
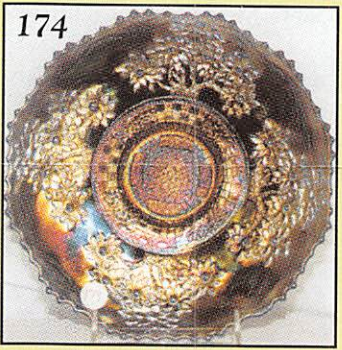
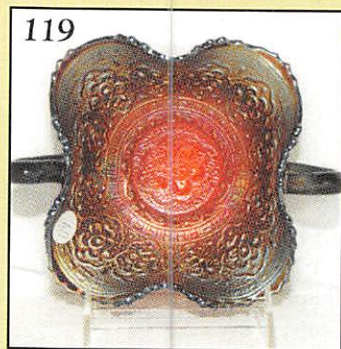
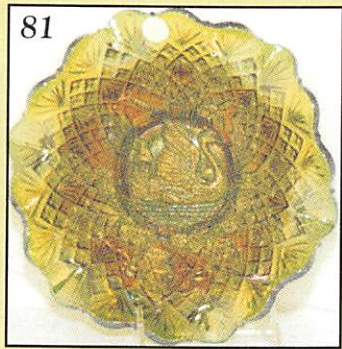
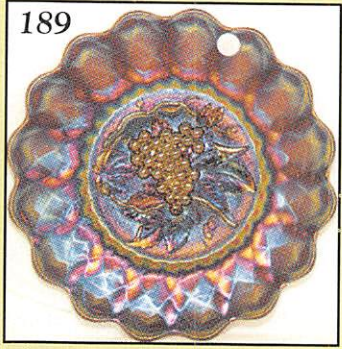
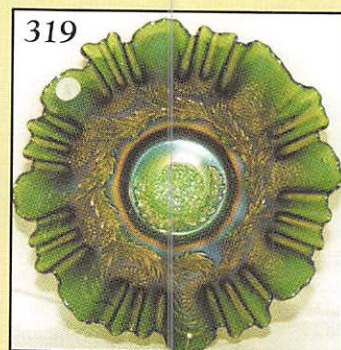
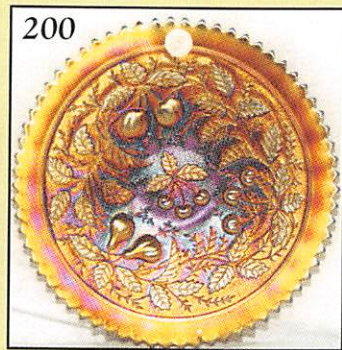
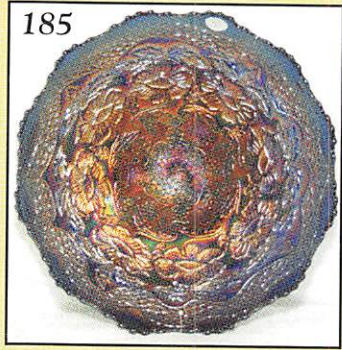
MAIL BIDS: Items are bid on in perfect condition with average or above iridescence OR as listed in the brochures. Bids will not be carried out when damage on an item has been found during the auction.

PEOPLE PRESENT AT AUCTION ARE RESPONSIBLE FOR FINDING ANY PINHEADS, WEAR, SPOTTINESS, MANUFACTURER'S DEFECTS OR ANY OTHER MINOR FLAWS, ETC.

NOTE: Read each line, as we have accentuated the type of no particular piece, all are special.

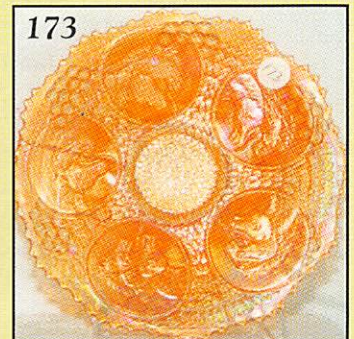
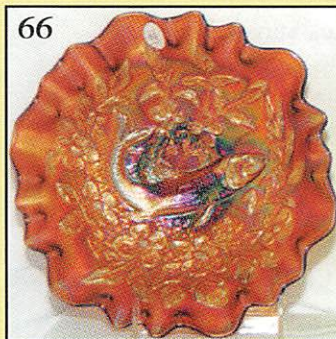
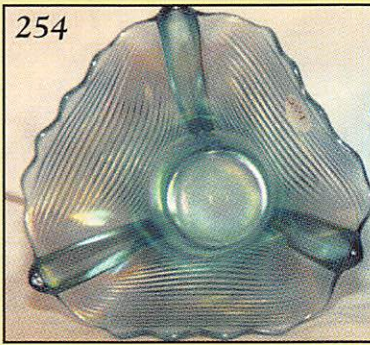
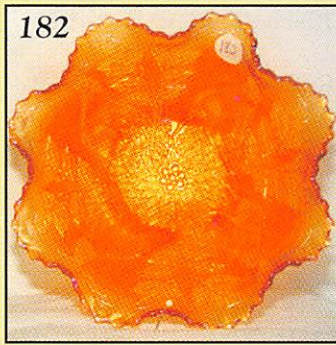
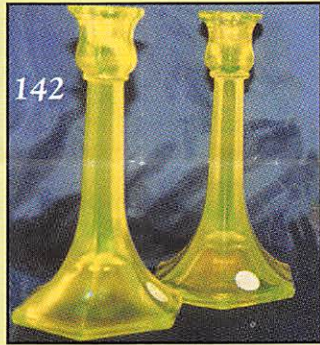
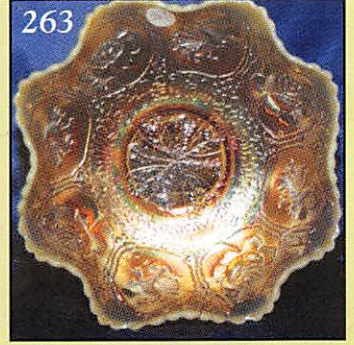
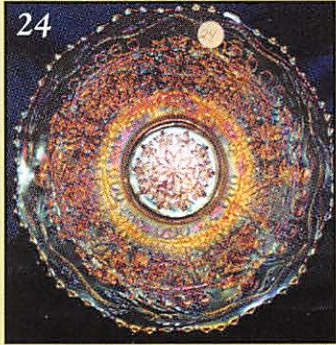
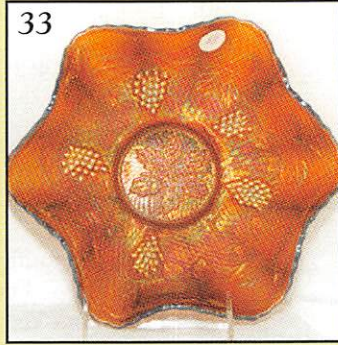
- | | |
|----------------------------------------------------------------------------------------|--------------------------------------------------------------------|
| 1. M - Imp. Grape Tumbler - Beauty | 22. M - Collarbase, 9", 8-Ruffle Dragon & Lotus Bowl - Super |
| 2. P - <u>N</u> Grape & Cable Tumbler - Above Average | 23. M - Ftd. Lg. Orange Tree Fruit Bowl - Extra Nice |
| 3. M - Rambler Rose Tumbler | 24. <u>W</u> - 9½" Leaf Chain Plate - Fantastic Example |
| 4. <u>M</u> - Diamonds Mlbg. Tumbler | 25. M - Sm. Grape & Cable Punch Bowl - 2 pc. Set |
| 5. P - <u>N</u> Dandelion Tumbler | 26. <u>M</u> - Grape & Cable Punch Cups - 6 x \$ |
| 6. P - <u>Slag</u> - <u>N</u> Dandelion Tumbler - Rare Effect | 27. A - Spt. Ftd., 7½" Ruffled Peacock & Grape Bowl |
| 7. B - Enameled Cherries Tumbler | 28. <u>M</u> - Beautiful 9", 6-Ruffle Captive Rose Bowl |
| 8. P - Imp. Diamond Lace Tumbler | 29. P - <u>N</u> Raspberry Ftd. Bowl - Factory Flawed |
| 9. A - <u>N</u> Raspberry Tumbler | 30. A - 8¾", 6-Ruffle Captive Rose Bowl - Beautiful Item |
| 10. A - <u>N</u> Peacock at Fountain Tumbler - A Beauty | 31. B - <u>N</u> Embroidered Mums Bowl - Scarce Color |
| 11. B - Beaded Stork & Rushes Tumbler | 32. P - 9" Rd., <u>N</u> Singing Birds Master Berry Bowl |
| 12. P - Good Luck Ruffled Rib Back Bowl - Super Elec. - Sm. Chip on Front | 33. A - 9", 6-Ruffle Concord Bowl - Super Example |
| 13. B - 3 in 1 Edge, Captive Rose Bowl - Scarce Shape | 34. A - Mlbg. 7" Ruffled Strawberry Bowl |
| 14. <u>PO</u> - 6½" Ribbon Edge Raindrops Nut Bowl - <u>SCARCE</u> - Sides Straight Up | 35. A - Mlbg. 10", 6-Ruffle Primrose Bowl - Super Satin |
| 15. M - Lotus & Grape Vt. Bon Bon | 36. M - Mlbg. 9" Flared Whirling Leave Deep Bowl - Radium |
| 16. P - Leaf Swirl (Westmoreland) Compote | 37. PO - Dome Base, 9", 10-Ruffle Dugan Dogwood Bowl - Very Pretty |
| 17. M - Fenton Peacock & Urn Compote - A Beauty | 38. <u>G</u> - Mlbg. 10½", 6-Ruffle Blackberry Wreath Bowl |
| 18. <u>G</u> - 8" ICS. Fenton Thistle Bowl - Scarce | |
| 19. B - 8¼" Fenton Holly Bowl | |
| 20. M - 9" <u>N</u> Super Grape & Cable Vt. BW. Plate | |
| 21. B - 8½" 10-Ruffle Wind Flower Bowl - Scarce Shape | |

39. G - Mlbg. 7½", 6-Ruffle Blackberry Wreath Bowl
40. **Rare G - 11", 8-Ruffle, Ball Ftd., Stay & Holly Bowl - Dark Irid.**
41. B - Spt. Ftd. 8", 8-Ruffle Stay & Holly Bowl
42. **A - 9" Collar Base, 8-Ruffle Peacock & Grape Bowl - Scarce Color**
43. M - Collar Base, 8½" Peacock & Grape ICS Bowl - Tip Chip
44. **P - Dugan Heavy Iris Tankard Pitcher - Flash Crack Top of Handle**
45. P - Heavy Iris Tumblers - Choice A, B, C, D
46. **B - Scarce Dugan Rambler Rose Water Pitcher - Radium - Scarce Color**
47. B - Scarce Dugan Rambler Rose Tumbler - Satin
48. **B - Fenton Radium Butterfly & Fern Water Pitcher**
49. P - N Ruffled Greek Key Bowl - BW Ext. - Neat Pattern
50. **Red - 6-Ruffle, 2-Row Open Edge Basket**
51. Helios G - Imp. Grape Decanter - Base Glows
52. **A - Collar Base, 3 in 1, Dragon & lotus Bowl - Scarce Color and Shape**
53. P - N 9", 8-Ruffle, Grape Leaves Bowl
54. **M - N 9", 8-Ruffle, Grape Leaves Bowl**
55. B - 9", 6-Ruffle Fenton Captive Rose Bowl
56. **G - Imp. Grape Wine Glass**
- 56A. A - 4½" Rd. Stork & Rushes Berry Bowl
57. B - Ball Ftd., 6", Ruffled Lotus & Poinsettia Berry Bowl (Waterlily)
58. **A - N 8¾", 8-Ruffle, 3 Fruits Bowl - Smooth Ext. - Nice Item**
59. G - Teal?? - 9", 8-Ruffle Fenton Vintage Bowl - Pretty
60. **G - 8¾", 3 in 1 Fenton Thistle Bowl - Scarce Shape**
61. PM - 9" N Grape & Cable Vt. Plate - BW Ext. - Yellow & Pink Irid
62. **RARE G - Mlbg. 8½" ICS Little Stars Bowl - Radium Rarity**
63. M - 10", 3 in 1 Mlbg., 6 pt., Many Stars, Satin Bowl - Scarce
64. **M - Mlbg. 8½" Deep, Rd., Large Mold, Rare Peacock Radium Salad Bowl**
65. A - ICS, Mlbg. Trout & Fly Bowl - Satin Beauty
66. **A - Mlbg. 3 in 1 Trout & Fly Bowl - Satin Beauty**
67. G - Mlbg. 3 in 1 Trout & Fly Bowl - Satin Beauty
68. **G - Mlbg. 3 in 1 Trout & Fly Bowl - Outstanding Radium**
69. Scarce IB - N Hearts & Flowers Ruffled Bowl
70. **AO - N Beaded Cable Rose Bowl - Extra Nice**
71. AO - N Rd. Bushel Basket - Full Opal Handles - Great
72. **Butterscotch AO - Outstanding 10½" Four Pillars Vase - Minor Toe Wear - Still Super**
73. IG - N 8" Drapery Vase - Soft Pinks & Green
74. **P - N Ruffled, Scarce, Stippled Strawberry Bowl - Very Pretty - Hot Pattern**
75. P - N 9¾" Peacock & Urn ICS Bowl - Multi Elec.
76. **W - Fenton 9¼" Peacock & Urn Plate - Great Blues & Pinks - Step Above Most**
77. M - Mlbg. 8¼" Rd. Flared Blackberry Wreath Bowl - Beautiful
78. **M - Mlbg. 8" ICS Radium Blackberry Wreath Bowl**
79. A - Mlbg. 8¼", 6-Ruffle, Radium, Grape Wreath Vt., 8 pt. Star Bowl
80. **G - Mlbg. 9", 6-Ruffle, Trout & Fly Bowl - 1¼" Heat Flash - Beauty**
81. G - Mlbg. Ruffled Nesting Swan Bowl - Beautiful Radium - Great Find
82. **G - 10¼" Mlbg., 6-Ruffle Blackberry Wreath Bowl**
83. Super Radium G - Mlbg. 6¼" Turned Up Cosmos Plate
84. **M - 9½" Dome Base, Rd., Fluor-dé-lis Bowl - Super Radium - Base Chips**
85. G - Mlbg. 8¼" ICS Mayan Bowl - Beautiful Radium
86. **M - 8½" Dugan Ftd. Cherries Bowl - Both Int. & Ext.**
87. **SCARCE CLAM - 9½" Fenton Orange Tree Plate - Trunk Center**
88. **P - N Grape & Cable Sweet Meat Compote - Extra Nice**
89. M - 5½" Ruffled Panthers Ftd. Bowl - Extra Pretty
90. **RARE Amber - Beaded Shell Mug**
91. **SCARCE B - Beaded Shell Mug**
92. **EXTRA NICE A - Beaded Shell Mug**
93. **EXTRA NICE M - Beaded Shell Mug**
94. **P - Vineyard Tumbler - Multi Irid.**
95. P - N Oriental Poppy Tumbler
96. **B - N Peacock at Fountain Tumbler - Choice A, B, or C**
97. M - Imp. Lustre Rose Tumbler - Rib Int. - A or B
98. **Celeste Blue - Concave Diamonds Tumbler**
99. P - N Acorn Burrs Tumbler - Choice A or B
100. **P - Imp. Diamond Lace Tumbler - Choice A, B or C**
101. B - Lattice & Grape Tumbler - Choice A,B,C,D or E
102. **RARE Dugan B - Wreathed Cherry Banana Bowl**
103. M - Ftd. Lg. Orange Tree Fruit Bowl - Pretty Ex.
104. **M - 11" ICS, Ball Ftd., Stay & Holly Bowl - Beautiful Ex.**
105. M - Twins 2 pc. Fruit Bowl
106. **M - Butterfly & Berry Butter Dish**
107. M - Butterfly & Berry Creamer
108. **M - Butterfly & Berry Sugar w/lid**
109. Black A - Dugan Maple Leaf, 4 Place Table Setting - One Price - Sugar Lid Roughness
110. **M - 10", 6'Ruffle U.S. Glass Head Dress Bowl - Scarce Radium Beauty**
111. PO - 11", 6-Ruffle, Ski Star & Compass Bowl
112. **A - Mlbg. 9¾" ICS, Lg. Mold, peacock & Urn Bowl**
113. M - Dugan Beaded Basket - Nice Ex.



114. Clear - Dugan Beaded Basket - Light Marigold
Highlites
115. P - N Rd. Bushel Basket - Nice Find
116. B - N Bushel Basket - Scarce & Pretty
117. B - Illusion, 4 Sides Up, Bon Bon - Neat Pattern
118. B - Fenton Vintage, 4 Sides Up, Bon Bon -
Seldom Offered
119. Red - Persian, 4-Up, Rare Bon Bon
120. Vaseline - 7½", 8-Ruffle Fenton Acorns Bowl
121. A - Grape Delight Ftd. Rose Bowl - Extra Nice
122. B - Vintage Grape Ftd. Nut Bowl - Multi Elec.
123. A - N Beaded Cable Rose Bowl
124. B - 7¼", 6-Ruffle Persian Medallion Bowl -
Scarce Size & Shape
125. B - 6½" Persian Med. Plate - Also Scarce
126. A - 9½" Fenton Holly Plate - Super Multi
Radium - Fantastic Item
127. B - 9½" Fenton Holly Plate - Multi Irid.
128. PO - 8½", 6-Ruffle Six Petals Bowl
129. SCARCE G - Mlbg. 8¾", 6-Ruffle Mystery
Peacock Bowl
130. G - 9½" N Ruffled Fruits & Flowers BW Bowl -
Super Pretty
131. W - 10⅞" N Peacock & Urn Low ICS Bowl - Tried
to Be A Plate - Buy Now
132. W - 8¾" Dugan Round-Up Bowl - Lightly Turned
Up - Plate?? - Buy Now
133. W - 8½" Apple Blossom Twig, Low Rd., Bowl
134. W - N 8-Sided Bushel Basket - Scarce Color
135. B - N Rd. Bushel Basket - Scarce & Pretty
136. M - Rd. N Bushel Basket - Dark & Nice
137. Scarce B - Grape Arbor, 3½" Tall, Whimsey - Vase
from Tumbler - Rare Shape & Color
138. A - 9", 6-Ruffle Captive Rose Bowl - Beautiful
Scarce Color
139. Helios G - Imp. Grape, 7 pc., Decanter Set
140. Smoke - 7⅞" Tall, Pr. Chesterfield Candlesticks,
Clear Base - Very Scarce
141. Vas. Topaz - 8½" Florentine Candlesticks - Pr.
142. Vas. Topaz - 8½" N #657 Pattern Candlesticks -
Pr. - Hot Pair
143. Olive or Russet - 8½" N #657 Pattern Candlesticks
- Pr.
144. W - N 10" Tree Trunk Vase - 3⅞" Base
145. P - 6" Imp. Ripple Squatty Vase - 2½" Base - 4" Top
146. P - N 7¼" Fine Rib Squatty Vase 3⅞" Base - 5½"
Top
147. Florentine IG - Vas. 6¼", Plate 96, Stretch, Sq.
Crimped Top Vase - Very Scarce To Rare
148. Russet - 9¾" N Thin Rib Vase - Scarce & Pretty
149. G - 11¾" Dia. Rib Vt., 6-Point, Flared Tulip Top
Vase
150. Smoke - Imp. 4½" Rococco Vase - Extra Nice
151. Smoke - 9¼" Smooth Panel Vase - 5" Rd. - Stretch
Top
152. M - Clear Base, Orange True Hat Pin Holder - 1
Ft. Chip
153. G - Mlbg. 9", 6-Ruffle Blackberry Wreath Bowl -
Satin
154. P - N 13" Thin Rib Funeral Vase, 4¾" Base, 5¾"
Top
155. Scarce Fenton A - 2-Row O.E. Blackberry Bowl -
BW ext.
156. Super G - N Grape & Cable Hat Pin Holder -
Chips on Feet, But Beautiful
157. PO - 7¼" CRE Smooth Ray Bowl w/Handgrip
158. W - N Corn Vase - Plain Base
159. G - Mlbg. Hanging Cherries Spooner
160. PO - 7¼" CRE Smooth Ray Bowl w/Handgrip
161. IG - N 9" Peacocks Plate - Rib Ext.
162. Black A - 4¼" x 3" Big Beetle or Scarab Paper
Weight
163. M - 15" Flute Undertray - Smooth Int.
164. G - Leaf Chain 9" Plate - Epoxy Tip - Still Very
Pretty
165. A - 9½" Fenton Heart & Vine Plate - Beautiful
Bronze & Gold Irid.
166. M - 7" Rd., Deep, Imp. Windmill Bowl
167. M - Fashion Punch Cup
168. Clear to Clam - 8" Smooth Panel Vase
169. M - N Grape & Cable Whimsey Pin Dish from
Punch Cup
170. M - N Lustre Flute Whimsey Pin Dish from
Punch Cup
171. Helios G - 10¼" Imp. Hattie Chop Plate - Scarce
172. Super M - Radium - Imp. 10½" Hattie Chop
Plate - More Scarce Than Purple
173. M - 8" Horse Medallion Plate - Lots of Pink &
Blues - Hot Pattern
174. SCARCE B - 9¼" Orange Tree Plate w/Trunk
Center - Great Color
175. Beautiful M - 9½" Orange Tree Plate - Lots of Pinks
& Blues - Great One
176. P - 6½" Wishbone & Spades Plate - BW Ext. -
Super Multi Elec. - Great Little Plate
177. B - 7", 6-Ruffle Mirrored Lotus Bowl - Very Scarce
178. M - 10", 6-Ruffle, Mlbg. Lg. Mold, Peacocks &
Urn Bowl - Satin & Nice
179. Lt. B - Ball Ftd., 10" Persian Med., Grape & Cable
Ext. Fruit Bowl
180. B - 10", 8-Ruffle, Deep, Stay & Holly Bowl - Ball
Ftd. - Beautiful Ex.
181. B - 8¼", 8-Ruffle, Spt. Ftd., Stag & Holly Bowl -
Scarce
182. Pumpkin M - 7¼", 8-Ruffle, Spt. Ftd., Stag &
Holly Bowl - Beautiful - Super Example
183. Super G - 7¼", 8-Ruffle, Spt. Ftd., Stag & Holly
Bowl - Outstanding Ex. - Gorgeous Green
184. B - 10½", 8-Ruffle, Sq. Shape, Ball Ftd., Stag &
Holly Bowl - Also Beautiful
185. B - 10½" ICS, Ball Ftd., Two Flowers Bowl - Multi-
Elec - WOW! - Fits In Any Collection
186. Rare Find, B - 9", 8-Ruffle, Butterfly & Berry
Master Bowl - Ftd. - A Toughie
187. P - N 10" ICS Grape & Cable Bowl - Multi Elec.
188. A - N 10½" Peacock at Urn Chop Plate - Seldom
Offered


189. Violet P - 11½" Imp. Heavy Grape Chop Plate - Super - No Harm Grape Chip - ? Open Bubble
190. M - 11⅜", Extra Nice, Imp. Heavy Grape Chop Plate
191. PO - 10¾" Four Flowers Chop Plate - Radium Finish - Rarer Than Purple
192. A - PCE - N Peacocks Bowl - Rib Ext. - Always In Demand
193. M - 7¼" N Wild Strawberry Hand Grip Plate
194. B - 9¼" Dugan, Heart & Vine Plate - Soft Blue Base Color
195. G - 9" Flat, Spt. Ftd., Fenton Grape & Cable Plate
196. M - 9" Flat, Spt. Ftd., Fenton Grape & Cable Plate
197. M - 8" Imp. Heavy Grape Plate - Multi Radium Irid.
198. G - 9¼" Imp. Scroll Embossed Plate - Tip Chip
199. B - 9" N Stippled 3-Fruits Plate - light Wear
200. P - 9¼" Flat N Stippled 3-Fruits Plate - Rib Ext. - Great Ex. - Flat - Golds & Purples
201. P - N Acorn & Burr Sugar Bowl w/lid - Great Multi Elec.
202. P - N Acorn & Burr Spooner - Multi Elec.
203. W - 6¼" Grape Vine & Lattice Ruffle Plate - Multi Irid.
204. M - 8", 6-Sided, Diamonds? Plate - Multi Elec.
205. M - Inverted Feather Compote - Clear Base - Scarce
206. M - 9½" Sunflower & Diamonds Vase - Great Ex.
207. M - 10" Cut Flowers Vase - Radium - Scarce
208. M - 8¼" Pin Wheel & Derby Vase - Dark Radium - Rarity
209. M - 9¼" Ftd. Prism Panels Vase - Base Nick
210. M - N Raspberry Milk Pitcher - Pretty One
211. M - Imp. Crab Claw Water Pitcher - Scarce
212. M - Crab Claw Tumbler - Choice A,B,C,D or E
213. G - N Raspberry Water Pitcher - Nice Ex.
214. G - Raspberry Tumbler - Yellow & Green Satin Irid.
215. M - Imp. Octagon 8" Tall Pitcher - Extra Nice Ex.
216. M - N Dandelion Tumbler w/Clear Base
217. P - Mlbg. Diamonds Tumbler
218. A - Lattice Band, Stork in Rushes Mug - Scarce Color
219. P - N Stippled Dandelion Mug
220. Red - Orange Tree Mug - 2½" Base - 3⅜" Top
221. Shriner Champagne - Rochester 1911
222. Shriner Champagne - Louisville 1909 - Tobacco Base
223. Shriner Champagne - New Orleans 1910 - Alligator
224. M - Imp. Grape Wine Decanter Set - 7 Pc.
225. P - N Grape & Cable Banana Bowl - Beautiful Ex.
226. P - N Grape & Cable Covered Lg. Compote
227. P - N Grape & Cable Sweet Meat Compote - Nice Ex.
228. P - N Grape & Cable Candle Sticks - Choice A or B
229. P - N Grape & Cable Oval Pin Dish
230. B - Dugan Thistle & Waterlily Ftd. Banana Bowl - Beautiful Rarity - A Real Dandy
231. Rare Imp. B - Lustre Rose Fernery Bowl - Great Find - Imperial Blue
232. Rare B - 9½" Rd. Mikado Lg. Compote - Cherries Ext. - Very Scarce
233. M - 5" Rd. Ftd. Panthers Berry Bowl
234. M - 5¼" Ftd. Ruffled Little Fishes Bowl
235. M - Circle Scroll, 5", Tri Corner Whimsey Bowl from Tumbler
236. M - Imp. 7" Ruffled 474 Compote - Very, Very Scarce
237. Deep Amber - Imp. Pansy Nappy
238. P - Imp. Pansy Nappy - Multi Elec.
239. Scarce Amber - Imp. Oval, Flat, Pansy Dresser Tray - 9¼" by 6¼"
240. Clam - Imp. Pansy Pickle Dish - Lots of Pretty Blues
241. Aqua - Imp. Windmill Pickle Dish - Very Scarce Color
242. M - Imp. Windmill Dresser Tray - Flat, Oval, Beautiful & Rare
243. Moonstone - Imp. 7", Rd., Deep, Windmill Bowl - Collar Base - RARE Base Glass
244. Olive - Imp. 7", Rd., Deep, Windmill Bowl - Collar Base - Unusual Base Glass
245. M - Imp. 7", Rd., Deep, Windmill Bowl - Collar Base - Beautiful Ex.
246. P - 8", 6-Ruffle Windmill Bowl - Imp. Multi Elec.
247. Great Lav. - 4½" Rd., Deep, Imp. Windmill Bowl - A Beauty
248. M - Imp. Hobstar Flower Compote - Nice Radium
249. Unusual G - Imp. 5¼" Ripple Vase - 2½" Base - 3½" Top
250. Custard Pearlized - Grape & Gothic Arches Tumbler
251. Gorgeous M - 5" Corn Bottle - Super Pretty - Normal Rim Flecks on Top
252. M - Imp. Windmill 8" Tall Pitcher - Extra Pretty
253. B - N Rd. Bushel Basket - Very Nice
254. IB - N 6¼" Tri-Corner Drapery Candy Dish - A Step Above
255. B - Orange Tree Loving Cup - Always In Demand
256. Russet - 8½" Florentine Pattern Candlesticks - Pr.
257. Clam - 9" Frosted Block Plate
258. Pink - Brocaded Poppies Ctr. Handle Server - RARE
259. ?? - Purple Reddish Slag Base, Blackberry Spray Ruffled Hat
260. PO - 6", 8-Ruffle Fishscale & Beads Bowl
261. Clear or Clam - Spt. Ftd. N Sunflower Ruffled Bowl - Yellow, Blue Irid
262. GREAT Topaz Vas. - 6¼" Ruffled Stippled Rays Compote - Super
263. Vas. Opal -9" Collar Base, Ruffled Dragon & Lotus Bowl - Extremely Desirable & Rare
264. Vas. - 6" Ruffled Ftd. Waterlily Bowl w/Marigold Overlay - Cutie



265. Vas. - Fenton Ruffled Holly Compote
266. **Clear - 9" Collar Base, Ruffled Stipple Rays Bowl - Maker Unk.**
267. Super M - 9 1/4" Captive Rose Plate - Near Pumpkin Beauty - Great One
268. **M - 9" N Stipple 3-Fruits Plate - Rib Bk. - Extra Nice**
269. M - 6" Cherry Chain Plate - Little Cutie!!
270. **W - 7" Fishscale & Beads Plate - Blues, Pinks & Flat**
271. P - 9 1/4" Imp. Ripple Vase - 3 3/8" Base - 4 1/2" Top - Radium Elec. - WOW!
272. **G - 10 1/4" April Showers Vase - Peacock Tail Int. - Scarce**
273. A - 8 1/2" Squatty Pulled Loop Vase - 3 3/4" Base - 4 1/4" Top - Unusual Size and A Beauty
274. **AO - N Rd. Bushel Basket - Lots of Opal - Light Butterscotch**
275. M - N Poppy Pickle Dish - Beautiful Yellows, Pinks & Blues - One of the Best
276. **Amberina - 9" Ruffled Fenton Holly Bowl - Extra Nice - Rare Color**
277. G - N 3-Fruits Collar Base Bowl - BW Ext.
278. **RARE Smoke - Imp. Grape Water Pitcher - Open Bubble One Grape**
279. Powder B - Orange Tree Mug w/Marigold Overlay - 2 1/2" Base - 3 1/2" Top - Very Scarce Color
280. **B - Orange Tree Mug - 2 1/2" Base - 3" Top**
281. M - N Oriental Poppy Tumbler - Dark & Rich
282. **B - Butterfly & Berry Tumbler**
283. Smoke w/M - Overlay - Stretch 10" Tall Basket - Plate 447 in Stretch Book
284. **G - 10 1/2" Long Thumb Print Vase**
285. **ULTRA RARE B - Mlbg. Hobstar & Feather Punch Cup - First I've Seen**
286. **G - Mlbg. Hobstar & Feather Punch Cups - A or B Choice**
287. G - Mlbg. 6" Tri-Corner Holly Sprig Bowl - Scarce Radium Beauty
288. **G - Mlbg. Holly Sprig Tri-Corner Nappy - Flattened Spade Shape**
289. G - Mlbg. Holly Whirl, 2-Side Pinch, Bon Bon
290. **M - Mlbg. Holly Whirl, 2-Side Pinch, Bon Bon**
291. A - 5 1/2" Mlbg. ICS Blackberry Wreath Berry Bowl
292. **G - 8 1/4" Mlbg. Low Ruffle Grape Wreath, 8-Point Star, Vt. Bowl**
293. Super Radium G - Mlbg. 8", Deep Rd., Fleur de Lis Bowl - Dome Base - Usual Chips on Base
294. **M - Mlbg. 9 1/2", 8-Ruffle, Country Kitchen, Collar Base Bowl - Scarce**
295. M - 6", 3 in 1, Mlbg. Grape Wreath, Clover & Feather Ct. Bowl
296. **Rich M - 7 1/4" Mlbg. ICS Hanging Cherries Bowl**
297. B - Ball Ftd. 6" Rd. Lotus & Grape Vt. Bowl
298. **Scarce IG - Rd. N Bushel Basket**
299. B - Fenton Ruffled Peacock & Urn Compote
300. **B - Rib Back N Peacocks Plate - Beautiful Elec. Highlights**
301. B - Captive Rose, 4-Sides Up Bon Bon - Tough to Find
302. **Scarce G - 9 1/4", 3 in 1, Little Flowers Collar Base Bowl**
303. PO - 9", 10-Ruffle, Dome Base, Beautiful Raindrops Bowl
304. **Celeste B - 6 1/4" Square, 2-Row OE Basket - A Beauty**
305. W - 9", 6-Ruffle Orange Tree Bowl
306. **Rich M - Fenton 9 1/2" Holly Plate - Near Pumpkin - Very Pretty**
307. M - 7 3/4" Leaf Chain Plate - Scarce Size
308. **M - 8" ICS Round-Up Bowl**
309. Yellow Amber - Collar Base, 8 1/2" Rd., Dragon & Lotus Bowl w/Opal Slag - Glows - WOW!
310. **M - 8" Rd. Collar Base Dragon & Lotus Bowl**
311. M - Mlbg. 8 3/4" Rd., Scallop Edge, Rays & Ribbons Bowl
312. **B - Horse Med. Ftd. Nut Bowl - Hot Pattern**
313. W - Ruffled N Poppy Show Bowl - Pretty Ex.
314. **A - 9" N Good Luck BW Plate - Popular Item**
315. B - 9" Captive Rose Plate - Gold, Blues, Pinks
316. **P - 9" N Peacocks Plate w/Rib Ext.**
317. Smoke - Imp. 9" Rd. Bowl - Blaze Pattern
318. **Pink - 6", 6-Sided, Hd. Brocaded Acorns Bowl**
319. G - 9 1/2", 3 in 1, Ten Mums Bowl - Pretty Blue Irid.
320. **A - N Spt. Ftd. Sunflower Bowl**
321. A - N Star of David & Bows Bowl
322. **Red A - 8-Ruffle, N Ftd. Rosette Bowl**
323. Red - 10 1/2" Fenton Fine Rib Vase
324. **P - Dugan Stemmed Star Fish Bon Bon - Scarce**
325. PO - 9" CRE Dugan Smooth Ray & Caroline Bowl - Beautiful
326. **MMG - Westmoreland 8 3/4" Scales Ruffle Bowl - Very Scarce**
327. M - 6 1/2" Rd., Peacock & Dahlia Bowl
328. **B - 9" Low 3 in 1 Ribbon Tie Bowl or Plate??**
329. M - 7 3/4" Imp. Rd., Deep, Acanthus Bowl
330. **Extra Nice G - N Ruffled Good Luck Bowl, BW Ext.**
331. P - N, 8-Ruffle, Ftd., Wishbone Bowl - Beautiful Ex.
332. **A - 9" N Peacocks Plate - Rib Ext. - Beautiful Ex.**
333. M - PCE Peacocks Rib Back Bowl - Always In Demand
334. **B - 9 1/2" Fenton 3-Fruits Plate**
335. P - PCE, N Strawberry Bowl - BW Ext. - Very Pretty
336. **A - Spt. Ftd. 8" Rd., Stay & Holly Bowl**
337. Beautiful G - 8 3/4" ICS Fenton Holly Bowl
338. **IB - Ruffled Hearts & Flowers Bowl**
339. W - Cosmos & Cane 6", Dome Base, Deep Compote - Frosty - Very Scarce
340. **W - Fenton Peacock at Urn 9 1/2" Plate - Pinks, Blues, Golds**
341. W - 6 3/4" Persian Garden & Pool of Pearls Plate
342. **W - 6 1/4" Cherry Chain Plate - Pretty Pinks & Blues**

- _____ 343. B - 6½" Persian Med. Plate - Scarce Color
 _____ 344. **B - 6½" Cherry Chain Plate - Pretty One**
 _____ 345. M - 8" Horse Med. Plate
 _____ 346. **G - Fenton 6" Tri-Corner Peacock Tail Plate**
 _____ 347. G - N Grape & Cable Hat Pin Holder - Beautiful
 Ex.
 _____ 348. **AO - Daisy & Drape Vase - Straight Top**
 _____ 349. B - Rd. N Bushel Basket - Extra Pretty
 _____ 350. **M - Imp. Grape Wine Decanter**
 _____ 351. M - Imp. Grape Wines - Choice of 9
 _____ 352. **G - 6" Mlbg., 3 in 1 Blackberry Wreath Bowl**
 _____ 353. PO - 8¾" Dugan, 10-Ruffle Apple Blossom Twig
 Bowl
 _____ 354. **B - Ruffled, Ftd. Horse Med. Bowl - Nice Pattern**
 _____ 355. M - 6¼" Ruffled Lions Bowl
 _____ 356. **B - Ftd. 6" Waterlily Ruffled Bowl**
 _____ 357. A - 7½" N Star of David and Bows Deep Bowl
 _____ 358. **M - N Ruffled Strawberry Bowl - Smooth Ext.**
 _____ 359. Scarce A - 8" Tight CRE Captive Rose Bowl
 _____ 360. **B - Fenton 2-Fruits, Divided, Bon Bon - Very
 Scarce and Nice - Beauty**
 _____ 361. A - N Fine Cut & Roses Rose Bowl - Plain Int.
 _____ 362. **G - N 6", 6-Ruffle, Stippled Rays Bowl - Scarce
 Beauty**
 _____ 363. B - Miniature Blackberry Compote - Minor Base
 Nick
 _____ 364. **M - Miniature Blackberry Compote - Two Base
 Chips**
 _____ 365. A - 6½" N Grape & Cable, 2 Sides Up, Card Tray
 _____ 366. **M - Fruits & Flowers Bon Bon**
 _____ 367. M - Butterfly & Berry Butter Dish w/Lid
 _____ 368. **M - Butterfly & Berry Sugar Bowl w/Lid**
 _____ 369. A - N Raspberry Gravy Bowl w/Feet Ground
 _____ 370. **MMG - 1983 HOACGA Orange Tree Loving
 Cup**
 _____ 371. PO - Blackberry & Butterfly Whimsey Vase from
 Tumbler - Levay 1980
 _____ 372. **IG - 1980 HOACGA Good Luck Hat Pin Holder**
 _____ 373. IB - 1982 HOACGA Good Luck Corn Vase
 _____ 374. **G - 5¾" Enameled Pitcher - ICGA, 1987, St.
 Louis**
 _____ 375. Vas. Opal - Contemp. Fenton OE Basket w/Handle
 _____ 376. **BA - Contemp. Fenton Fish Paperweight**
 _____ 377. SCARCE A - Mlbg. Ruffled Boutonniere Compote
 - Satin
 _____ 378. **A - 5½", 6-Ruffle Peacock Tail Bowl**
 _____ 379. B - 5½" Ruffled Fenton Holly Hat
 _____ 380. **G - 5" Dia. Coin Spot Rose Bowl**
 _____ 381. M - Spade Shape Dugan Leaf Rays Nappy
 _____ 382. **Clam - 9" Frosted Block Plate**
 _____ 383. M - 6" Smooth Rib Saucer
 _____ 384. **M - 9" Imp. Open Rose Plate - Worn -
 Roughness**
 _____ 385. M - Leaf Swirl Compote w/Clear Base
 _____ 386. **M - Dugan Coin Spot Ruffled Compote**
 _____ 387. M - Imp.? 6", 6-Ruffle Compote

- _____ 388. **M - 6", 6-Ruffle Plain Compote**
 _____ 389. M - 6-Ruffle Fenton Holly Compote
 _____ 390. **M - Tight Ruffle Fenton Holly Compote**
 _____ 391. G - Imp. Pansy 9" Ruffle Bowl - Radium Silver
 _____ 392. **Light B - Collar Base, Ruffle, Peacock & Grape
 Bowl**
 _____ 393. M - Lattice Top - Stork in Rushes Mug
 _____ 394. **M - Butterfly & Berry Tumbler**
 _____ 395. G - N PCE Strawberry Bowl - BW Back - Chip Tip
 _____ 396. **P - N Grape & Cable Small Punch Bowl Base - 2
 Sets Grapes**
 _____ 397. B - Orange Tree Punch Bowl Base
 _____ 398. **B - Orange Tree Punch Cups - 4 x 5**
 _____ 399. M - Soda Gold Spittoon
 _____ 400. **M - Orange Tree Mug - 2½" Base - 3½" Top**

 **THANK YOU FOR
 ATTENDING THE AUCTION**

**CALENDAR OF EVENTS
 CARNIVAL GLASS AUCTION**

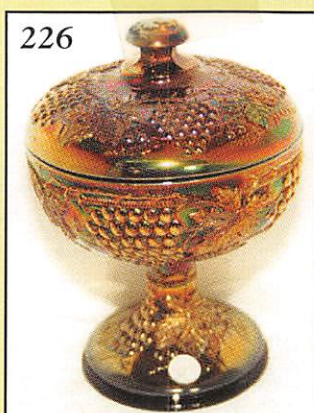
**Saturday, April 8, 2000
 Boonville, MO-Armstrong Collection**

**Saturday, May 7, 2000
 Boonville, MO-Northern Collection**

**Saturday, October 14, 2000
 Wichita, KS ACCGA**

**For Free Color Catalogs & Information Write:
 Mickey Reichel
 516 Third Street, Boonville, MO 65233-1536
 or Call: 660-882-5292 days or
 660-882-5283 evenings before 9:00 p.m.**

**CALL TODAY TO SELL
 YOUR GLASS FOR
 YEAR 2000
 1 PC. OR 1000+ PCS.**



255 251 285 - 220



271 323 273



6 250 214
91 90 94

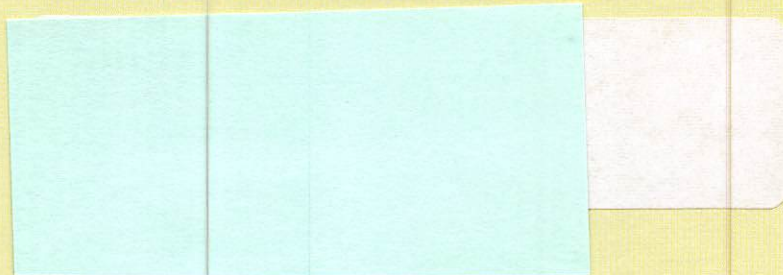
MICKEY REICHEL
ANTIQUE & AUCTION, L.C.
 516 THIRD STREET
 BOONVILLE, MO 65233-1536



FIRST CLASS MAIL



SPECIAL INVITATION TO:



"EXCITEMENT BUILDS AS THE CROWD GATHERS AT THE MICKEY REICHEL AUCTION COMPANY!"