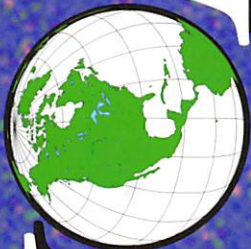


Texas Carnival Glass Club Convention

Saturday, February 19, 2000 – 9:30 a.m.

Collections of Marvin & Dorothy Loughmiller and Ken & Beverly Osbon

AUCTION



Leading the way in the new millennium.

NOW ON VIDEO!
See page 2



Crowne Plaza Hotel
Dallas, Texas

7800 Alpha Road (Coit Rd. and the LBJ Expressway)

Call (972) 233-7600 for reservations

Texas Auction License #10758

Seeck Auctions

Jim and Jan Seeck
515-424-1116

54-B
55-D

SATURDAY, FEBRUARY 19th, 2000 -- 9:30 am

Crowne Plaza Hotel - Dallas, Texas

NO BUYER'S PREMIUM.

The year 2000 is well under way and we have all survived! The party continues in Dallas with the biggest and best ever Texas Carnival Glass Club Convention and Auction. The collections of Ken and Beverly Osbon and Marvin and Dorothy Loughmiller of Oregon will be sold on Saturday. What an auction!! Almost every piece could have been bold printed. This is an exceptional opportunity to add quality glass to your collections. Guaranteed to be an exciting auction.

For **Texas Club information** contact Matzi Thrasher: (281)351-2202. E-mail: cglady@ibm.net
Make your reservations soon! (972)233-7600. Mention the club for a special rate. \$95 per night, suite including breakfast and manager's reception. Deadline to get the special discounted rate is February 2, 2000.

Texas Club Website: <http://www.texascarnivalglass.org>

NOW ON VIDEO

- ** Professionally video taped piece by piece of entire auction. ** On one standard VHS videocassette tape.
- ** Real time indexing to find that certain piece. ** Includes post auction price results.

Available now for \$20.00 plus \$3.20 Priority shipping (\$23.20)
Internationally available for \$20.00 plus \$6.00 Global Priority Shipping (\$26.00)
Send check or money order to: Seek Auctions, PO Box 377, Mason City, IA 50402

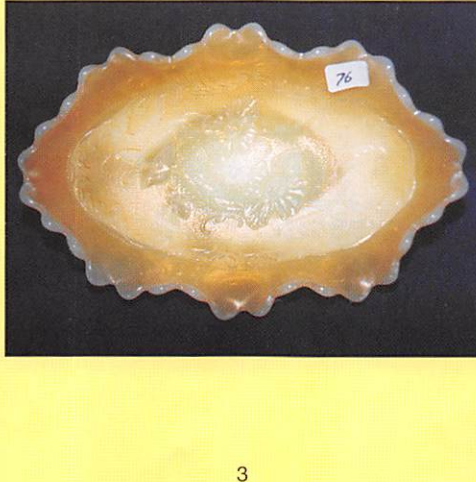
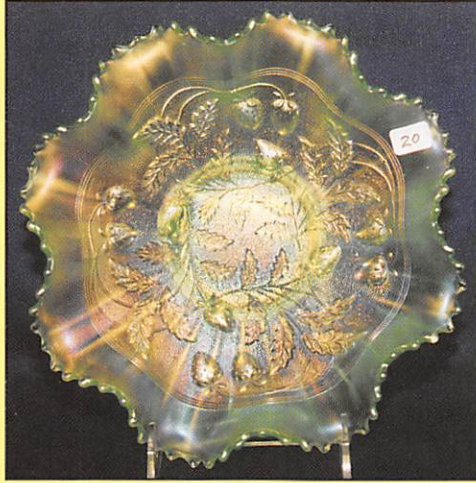
8.25% Sales Tax will be charged. Please bring your sales tax number with you.

ABSENTEE BID POLICY

1. Write-in bids will be accepted by sending the numbers of the item(s) desired and the amount bid on each to:
Seek Auctions, PO Box 377, Mason City, Iowa 50402.
 2. If known by Auction Company, bids may be done over the telephone. (515) 424-1116.
 3. You may **email** your bids to us: **seeckauction@willowtree.com** Continue to include the numbers of the item(s) you would like to bid on and amount bid on each, please include your telephone number.
 3. There is a \$5 handling charge for each successful bid. Shipping and insurance charges are additional.
 4. Bidders will be notified by phone if their bid(s) are successful. This call will be made 1 - 3 days after the auction.
 5. Please have all bids in by Friday, Feb. 11th. All bids (by mail, phone or email) after this date may not be carried out.
 6. Please place bids in the following increments: \$1 to \$300 - \$5 increments \$300 up - \$25 increments.
 7. **If you do not receive an item that sold for less than your bid, assume we cancelled your bid because the piece of glass had below average color, manufacture problem, damage or was not listed correctly.**
 8. To receive price lists send: \$20 — for this auction and next 7 auctions
\$5 — for only this auction or individual auction (please specify)
- Send to the above address. (please allow 2 - 3 weeks delivery for price lists)(**Make checks payable to: Jan Seck**)
(All auction results are available on our website for free!)

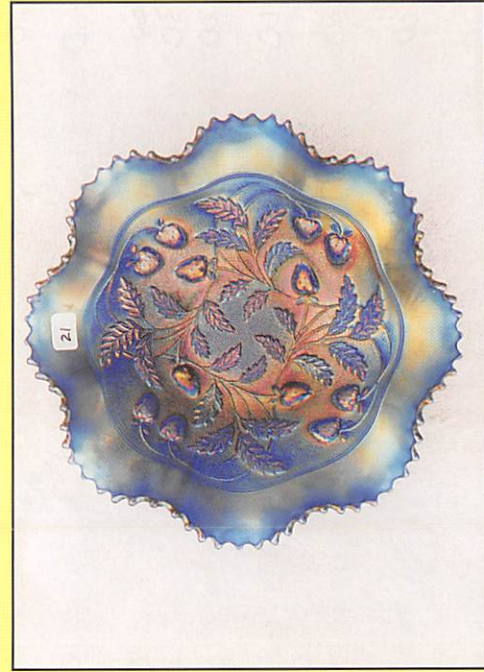
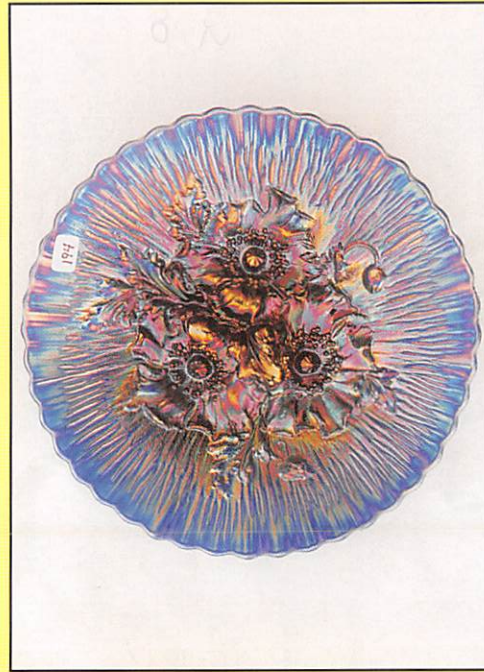
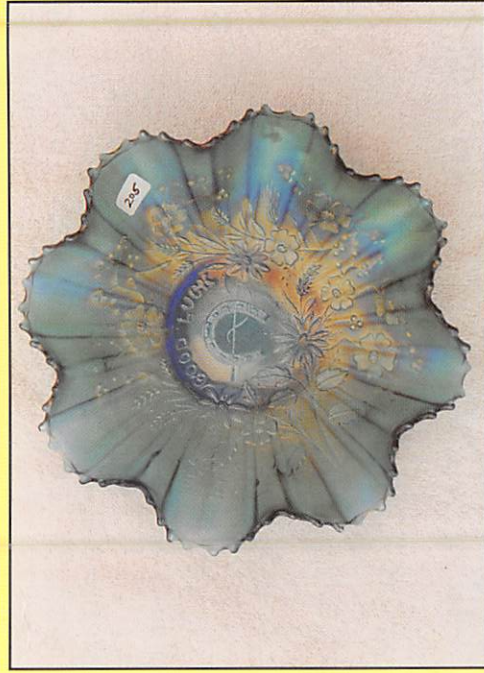
WEBSITE: <http://www.willowtree.com/~seeckauction>

- | | |
|---|---|
| <p><u>30</u> 1. Butterflies bon bon - green</p> <p><u>25</u> 2. N's Thin Rib 10" vase - olive green</p> <p><u>35</u> 3. Miniature Morning Glory 6" vase - marigold</p> <p><u>35</u> 4. Rooster hatpin w/painted background - dark blue</p> <p><u>45</u> 5. Rooster hatpin w/painted background - amber</p> <p><u>45</u> 6. Rooster hatpin w/painted background - green</p> <p><u>50</u> 7. Rooster hatpin w/painted background - light blue</p> <p><u>80</u> 8. Rooster hatpin w/painted background - red</p> <p><u>45</u> 9. Rooster hatpin w/painted background - lavender</p> <p><u>1900</u> 10. FENTON'S PEACOCK AT URN 9" PLATE - BLUE - ELECTRIC & SPECTACULAR, UNBELIEVABLE QUALITY, IRID., & COLOR, WOW!! <i>Joyce Seal</i></p> <p><u>375</u> 11. Fenton's Peacock at Urn 9" plate - marigold - scarce & nice</p> <p><u>155</u> 12. Fenton's Peacock at Urn 9" plate - white - scarce</p> <p><u>550</u> 13. Fruits & Flowers bon bon - aqua opal - super pastel, super irid., super scarce</p> | <p><u>750</u> 14. Fruits & Flowers bon bon - ice green - pretty & scarce, nice</p> <p><u>450</u> 15. Fruits & Flowers bon bon - ice blue - very scarce & very pretty</p> <p><u>125</u> 16. Pinecone 6" plate - blue - scarce</p> <p><u>700</u> 17. N's Stippled Peacock at Urn master IC bowl - clambroth, smokey amber, ginger ale - super irid. on this very pretty color, fantastic quality, you call the color</p> <p><u>200</u> 18. N's Stippled Peacock at Urn master IC bowl - custard - not carnival</p> <p><u>35^{ea}</u> 19. N's Peacock at Urn IC sauces (2) - custard - not carnival, choice</p> <p><u>1900</u> 20. Stippled Strawberry ruffled bowl w/ribbed back - ice green - very dark ice green & fantastic irid., a great rare bowl</p> <p><u>1000</u> 21. Stippled Strawberry ruffled bowl w/ribbed back - blue - electric & fantastic, another great bowl</p> <p><u>750</u> 22. Stippled Strawberry ruffled bowl w/BW back - horehound - very pretty & rare in this color</p> |
|---|---|



- 350 23. Stippled Strawberry ruffled bowl w/ribbed back - purple - also super nice & rare
- 175 24. Apple Tree 7 pc. water set - marigold - very nice set
- 2100 25. Orange Tree ruffled bowl - red - super red & super nice, a very rare bowl
- 75 26. Orange Tree w/trunk ruffled bowl - amethyst - very scarce color
- 2100 27. Lattice & Poinsettia ftd ruffled bowl - ice blue - very rare & pretty, a dandy
- 400 28. Imperial Grape wine bottle w/stopper - purple - super
- 2600 29. Rose Show 9" plate - ice green - extremely rare color & super, a top pattern w/top quality *snell*
- 200 30. Rose Show 9" plate - ice blue - very pretty & rare
- 700 31. Rose Show 9" plate - purple - pretty example of a rare plate, not many of these are pretty
- 1700 32. Rose Show 9" plate - marigold - lots of yellow irid. on this scarce plate *Joyce Solo*
- 200 33. Rose Show 9" plate - white - scarce, nice
- 85 34. Double Dutch large ftd ruffled bowl - smoke
- 1300 35. Peacocks PCE bowl w/ribbed back - ice green - frosty & super, an extremely rare bowl, a top quality piece
- 1600 36. Peacocks PCE bowl w/ribbed back - green - extremely rare color & super nice
- 800 37. Peacocks PCE bowl w/ribbed back - blue - electric & fantastic, as nice as they get
- 1800 38. Jockey Club adv. handgrip plate - amethyst - very pretty & rare, highly desirable
- 325 39. Brocaded Palms 8 1/4" large melon ribbed vase - pink - scarce, very popular
- 700 40. Grape & Cable perfume bottle w/stopper - purple - very scarce & highly desirable, super
- 225 41. Grape & Cable dresser tray - purple - very scarce & nice
- 225 42. Grape & Cable pin tray - purple - scarce & nice
- 175 43. Grape & Cable cologne bottles w/stoppers (2) - purple - nice & scarce, choice
- 200 44. Grape & Cable powder jar - purple - nice
- 300 45. Grape & Cable hatpin holder - purple - very very nice example, highly desirable, minor pinpoint on foot
- 800 46. M'burg Big Fish IC shaped bowl - marigold - satin & super, a very rare bowl
- 1700 47. Orange Tree w/trunk 9" plate - amethyst - extremely rare color for this plate, not many known
- 900 48. Orange Tree 9" plate - blue - electric & super, beautiful
- 450 49. Orange Tree 9" plate - marigold - dark & nice
- 800 50. ORIENTAL POPPY TANKARD WATER PITCHER - LIME GREEN - UNBELIEVABLE!!!!, FABULOUS COLOR, GREAT IRID., & IT'S THE ONLY ONE I CAN EVER REMEMBER SEEING, HOLY COW!!!
- 145 51. Oriental Poppy tumbler - ice green - scarce
- 1900 52. Oriental Poppy tankard water pitcher - ice blue - frosty & fantastic, beautiful irid. on this rare, rare piece
- 235 53. Oriental Poppy tumbler - ice blue - very nice
- 900 54. Oriental Poppy tankard water pitcher - white - nice & very rare
- 70 55. Oriental Poppy tumbler - white - scarce
- 800 56. Oriental Poppy tankard water pitcher - purple - super pretty example, scarce
- 95 57. Oriental Poppy tumblers (6) - purple - fantastic examples, choice 65-1, 45-all-4
- 200 58. Oriental Poppy tankard water pitcher - marigold - dark & fantastic, has a heat check on the top of the applied handle, so it was made that way
- 55 59. Oriental Poppy tumbler - marigold - nice
- 800 60. Holly 9" plate - amethyst - very pretty for this very rare plate
- 250 61. Holly 9" plate - blue - nice, has chip on base
- 300 62. Holly 9" plate - marigold - pretty
- 325 63. Orange Tree loving cup - white - rare color, nice
- 175 64. Orange Tree loving cup - green - electric & super, as nice as they get
- 135 65. Orange Tree loving cup - blue - scarce
- 1100 66. Poppy Show ruffled bowl - ice green - rare & extremely desirable, pretty
- 1000 67. Poppy Show ruffled bowl - ice blue - nice bowl, very scarce
- 1100 68. Poppy Show ruffled bowl - purple - pretty, scarce
- 350 69. Poppy Show ruffled bowl - marigold - very nice, has two small nicks on base
- 300 70. Poppy Show ruffled bowl - white - nice, scarce
- 40 71. Six Petels ruffled bowl - peach opal - minor nick on base
- 2100 72. Peacock at the Fountain 4 pc. table set - ice blue - super rare & super pretty set, not many sets around, minor pinpoint on inside edge of butterdish *Tom Madani*
- 255 73. Pansy Dresser tray - marigold - super pretty & scarce
- 1300 74. Australian Kookaburra 11" float bowl - purple - super pretty & extremely rare, nice
- 500 75. M'burg Many Stars 3 in 1 edge bowl - marigold - satin & pretty
- 3100 76. N'S POPPY PICKLE DISH - MARIGOLD ON CUSTARD - UNBELIEVABLY RARE & EXTREMELY DESIRABLE, SUPER PRETTY, A GREAT PIECE!
- 2700 77. N's Poppy pickle dish - aqua opal - a superb piece of aqua opal, a rare & highly desirable piece
- 625 78. N's Poppy pickle dish - ice blue - super dark color plus pretty, rare
- 205 79. N's Poppy pickle dish - white - very scarce, nice
- 375 80. N's Poppy pickle dish - green - electric irid., scarce - nick on base
- 375 81. N's Poppy pickle dish - purple - super pretty, a scarce color
- 385 82. N's Poppy pickle dish - blue - nice
- 300 83. N's Poppy pickle dish - marigold - dark, pretty
- 500 84. N's Poppy pickle dish - pastel marigold - fantastic irid. -55

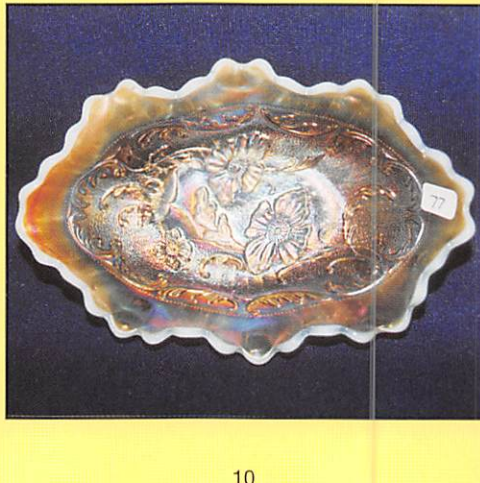
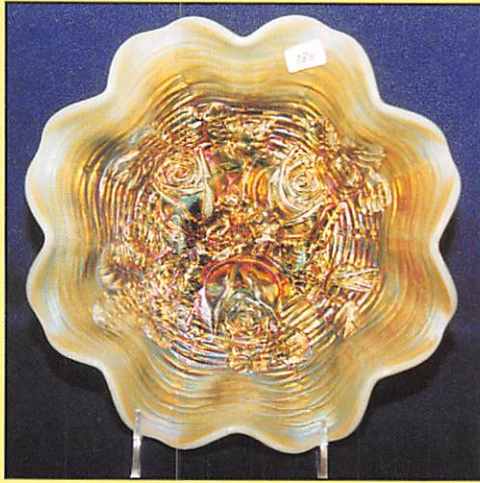
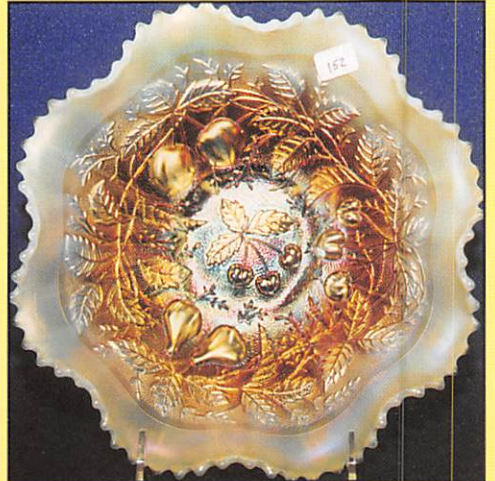
- 1100 85. Davidson Society Chocolates adv. handgrip plate - amethyst - very pretty example and highly desirable
- 800 86. Pony ruffled bowl - ice green - super rare item & highly desirable, very pretty
- 105 87. Fisherman's mug - purple - pretty
- 1700 88. Peacocks ruffled bowl w/ribbed back - aqua⁵⁵ opal - lots of opal & super pretty, a great bowl
- 1200 89. Peacocks ruffled bowl w/ribbed back - green - super pretty & very scarce in this color
- 1100 90. Peacocks ruffled bowl w/ribbed back - ice green - pretty & rare, much rarer than the plates
- 350 91. Peacocks ruffled bowl w/ribbed back - purple - pretty & scarce
- 1100 92. Holly ruffled bowl - blue opal - extremely rare opal color, very nice, a must for Fenton collectors
- 1700 93. Holly ruffled bowl - red - cherry color w/red irid., rare & desirable
- 1200 94. Holly ruffled bowl - marigold on moonstone - super pretty example of this rare color
- 175 95. Grape & Cable whiskey decanter - marigold - very scarce item
- 575 96. Stippled Three Fruits spt ftd ruffled bowl - aqua opal - super pretty & very rare, nice
- 350 97. Stippled Three Fruits spt ftd ruffled bowl - ice green - rare & desirable, pretty
- 250 98. Stippled Three Fruits spt ftd ruffled bowl - white - very scarce
- 125 99. Hearts & Flowers ruffled compote - white - scarce
- 5000 ~~500~~ 100. STAG & HOLLY 9" SPT FTD PLATE - AMETHYST - A SUPER PRETTY RARITY, ONE OF TWO THAT I KNOW OF, HIGHLY DESIRABLE
- 65 101. Stag & Holly 9" spt ftd plate - marigold - very pretty, scarce *Bob Garrison*
- 85 102. Lotus & Grape bon bon - green
- 700 103. N's Peacock at Urn master IC bowl - ice green - rare & desirable, nice
- 300 104. N's Peacock at Urn IC sauce - ice green - very pretty for this scarce sauce
- 700 105. N's Peacock at Urn master IC bowl - ice blue - also rare & nice
- 225 106. N's Peacock at Urn IC sauce - ice blue - scarce
- 475 107. N's Peacock at Urn master IC bowl - white - frosty & pretty, scarce
- 65 108. N's Peacock at Urn IC sauce - white - scarce
- 900 109. N's Peacock at Urn master IC bowl - blue - very rare color for this bowl, nice
- 85 110. N's Peacock at Urn IC sauce - blue
- 450 111. N's Peacock at Urn master IC bowl - purple - very scarce bowl
112. N's Peacock at Urn IC sauces (2) - amethyst - choice
- 400 113. N's Peacock at Urn master IC bowl - marigold - fantastic yellow & pink irid. *Steve*
- 114. N's Stippled Peacock at Urn IC sauce - marigold - very nice
115. Stippled Three Fruits PCE bowl w/ribbed back - green - extremely rare stippled, nice
116. Stippled Three Fruits PCE bowl w/BW back - purple - pretty & very rare
117. Acorn Burrs 8 pc. punch set - green - super pretty & rare, a highly desirable set, from the Moore Collection.
118. Florentine candlesticks - russet - sold as pair
119. Captive Rose 9" plate - blue - scarce
120. Captive Rose 9" plate - marigold - pretty & very scarce
121. Peacock at the Fountain fruit bowl - blue - rare & desirable, nice bowl
122. Peacock at the Fountain fruit bowl - purple - eclectic & nice, scarce
123. Hearts & Flowers ruffled bowl w/ribbed back - ice green - pretty & scarce
124. Hearts & Flowers ruffled bowl w/ribbed back - purple - also pretty & scarce
125. Hearts & Flowers ruffled bowl w/plain back - ice blue - super pretty
126. Fine Cut & Roses rosebowl - aqua opal - extremely rare item & nice, does have normal small nick on foot
127. Fine Cut & Roses rosebowl - ice blue - normal minor nick on toe
128. Dragon & Lotus IC shaped bowl - red - cherry red color & nice, very scarce & highly desirable
129. Dragon & Lotus IC shaped bowl - marigold on moonstone - very scarce color & nice
130. M'burg Peacock small berry bowl - amethyst - radium, has nick on base
131. M'burg Courthouse IC shaped bowl - amethyst - radium & scarce
132. Good Luck PCE bowl w/BW back - green - super pretty
- 200 133. Good Luck PCE bowl w/ribbed bowl - blue - super pretty
- 375 134. Good Luck PCE bowl w/ribbed back - purple - very nice
135. Good Luck PCE bowl w/ribbed back - marigold - dark & nice
136. Hearts & Flowers 9" plate - marigold - super pretty example, dark
137. Diamond Lace water pitcher - purple - very pretty
138. Diamond Lace tumbler - purple
- 550 139. M'burg Hobnail spittoon - amethyst - rare & nice, a highly desired piece
- 450 140. M'burg Hobnail spittoon - marigold - also rare & nice, minor nick on base
- 350 141. Drapery rosebowl - aqua opal - nice
- 230 142. Drapery rosebowl - blue - extra rare color for these
- 1200 143. Grape & Cable candle lamp - green - very scarce & highly desirable
- 1100 144. Grape & Cable candle lamp - marigold - may be the rarest of the colors, nice
- 600 145. Wild Berry powder jar - marigold - rarely seen, nice
- 600 146. Grape & Cable giant compote - green - rare color & nice *note spt inside bowl*



- 20 147. Flute toothpick - purple - nicks at points near base
- 85 148. Flute toothpick - marigold - nice
- 165 149. Open Rose rosebowl - amber - super pretty example
- 385 150. **STIPPLED THREE FRUITS RUFFLED BOWL W/RIBBED BACK - APPLE GREEN - VERY UNUSUAL COLOR, ONLY ONE I'VE SEEN LIKE IT, PRETTY & HIGHLY DESIRABLE**
- Tammy Whittney*
- 575 151. Stippled Three Fruits ruffled bowl w/ribbed back - lime green - extremely rare color & nice
- 1000 152. Stippled Three Fruits ruffled bowl w/ribbed back - aqua opal - super pretty example of this rare & highly desirable piece
- 800 153. Stippled Three Fruits ruffled bowl w/ribbed back - green - very pretty & very rare
- 300 154. Stippled Three Fruits ruffled bowl w/ribbed back - white - frosty & pretty, scarce
- 1600 155. Stag & Holly ftd chop plate - marigold - pretty & rare, much desired chop plate
- 80 156. M'burg Holly Whirl ruffled bowl - green - satin
- 1100 157. Grape & Cable 8 pc. punch set - green - very pretty & scarce, base & cups are stippled
- 850 158. Grape Arbor tankard water pitcher - white - pretty & frosty
- 160 159. Grape Arbor tumbler - white
- 600 160. Grape Arbor tankard water pitcher - purple - scarce item
- 75 161. Grape Arbor tumbler - purple
- 350 162. Grape Arbor tankard water pitcher - marigold - nice
- 25 163. Grape Arbor tumbler - marigold
- 450 164. Good Luck 9" plate w/BW back - green - scarce & desirable
- 400 165. Good Luck 9" plate w/BW back - purple - scarce & very nice
- 175 166. Double Stemmed Rose dome ftd ruffled bowl - celest blue - pretty stretchy irid., scarce & desirable *copy on edge*
- 1400 167. Stippled Grape & Cable 9" plate w/BW back - green - super pretty irid., as nice as this rare plate can get
- 600 168. Stippled Grape & Cable 9" plate w/ribbed back - purple - pretty & very scarce stippled
- 400 169. Singing Birds mug - ice blue - very rare & highly desirable, nice *Hamilton's*
- 65 170. Singing Birds mug - purple
- 900 171. Peacocks 9" plate w/ribbed back - ice blue - extremely rare plate & highly desirable
- 700 172. Peacocks 9" plate w/ribbed back - blue - very pretty plate & highly desirable
- 600 173. Peacocks 9" plate w/ribbed back - marigold - fantastic pink & yellow irid. on this plate, a dandy!
- 650 174. Peacocks 9" plate w/ribbed back - ice green - as pretty as I've ever seen, beautiful
- 400 175. Peacocks 9" plate w/ribbed back - white - very nice
- 475 176. N's Bushel Basket - aqua opal - many would call this blue opal, is a very strong blue, has a pastel irid. w/nice opal
- 350 177. N's Bushel Basket - aqua opal - great opal
- 125 178. N's Bushel Basket - blue - electric & pretty
- 1100 179. **Stippled Strawberry 9" plate w/BW back - green - very pretty, very rare, super nice plate**
- 1000 180. **Stippled Strawberry 9" plate w/ribbed back - purple - as pretty as these ever get, unusual w/the ribbed back**
- 375 181. Grape & Cable 8 pc. water set - purple - super pretty pitcher w/7 tumblers, a nice set
- 375 182. Leaf & Beads rosebowl - sapphire - rare color, pretty
- 85 183. Leaf & Beads rosebowl - blue - nice
- 165 184. Leaf & Beads rosebowl - green - has rayed interior
- 1600 185. Rose Show ruffled bowl - green - fine example, nice even multi-colored irid, highly desirable
- 850 186. Rose Show ruffled bowl - aqua opal - pretty butterscotch irid. w/lots of opal
- 650 187. Rose Show ruffled bowl - ice green - small nick on rose, but super pretty, highly desired
- 850 188. Rose Show ruffled bowl - ice blue - pretty & scarce
- 475 189. Rose Show ruffled bowl - purple - pretty irid., on this rare bowl, nick on base
- 45 190. Little Barrel - smoke - minor nick on top edge, nice
- 1000 191. Dragon & Lotus ruffled bowl - red - cherry red color & very nice, rare
- 750 192. Dragon & Lotus ruffled bowl - lime green opal - pretty marigold overlay on this rare bowl, nice opal
- 300 193. Four Flowers Variant 9" plate - green - pretty & scarce
- 1650 194. Poppy Show 9" plate - blue - pretty & rare, minor mold ruffness on base, a great plate
- 1100 195. Poppy Show 9" plate - ice blue - rare & desirable, nice *(comp?)*
- 500 196. Poppy Show 9" plate - white - scarce & very desirable, nice
- 1200 197. Poppy Show 9" plate - purple - rare & desirable,
- 350 198. Stippled Rays IC shaped compote - celest blue - very scarce & desirable, nice
- 350 199. Stippled Rays IC shaped compote - ice green - very scarce & pretty
- 2600 200. **HEART & HORSESHOE/FENTON'S GOOD LUCK BOWL - MARIGOLD - EXTREMELY RARE & DESIRABLE, FABULOUS!!** *Joyce Sec 2*
- 450 201. Horse Medallion ruffled ftd bowl - green - pretty, scarce
- 425 202. M'burg Trout & Fly 3 in 1 edge bowl - amethyst - satin, scarce
- 250 203. M'burg Trout & Fly 3 in 1 edge bowl - marigold - satin, scarce
- 2750 204. **GOOD LUCK RUFFLED BOWL W/RIBBED BACK - ICE BLUE - EXCEPTIONAL BOWL, SUPER PRETTY IRID. ON THIS RARE, RARE PIECE**
- 1800 205. Good Luck ruffled bowl w/ribbed back - sapphire - very rare color & highly desirable, nice



- 500 206. Peacock at the Fountain punch bowl and base - marigold - pretty & scarce
- 2800 207. Vintage 9" ruffled bowl - aqua opal - a Fenton rarity, lots of opal, extra nice, WOW!
- 350 208. Vintage 9" ruffled bowl - red - super nice & rare, has chip on edge
- 375 209. Orange Tree standard size mug - red - nice, scarce
- 800 210. Embroidered Mums 9" plate - ice green - very rare plate, seldom sold
- 950 211. 1911 Atlantic City Elks IC shaped bowl - blue - super pretty & rare, nice example
- 600 212. Stippled Good Luck ruffled bowl w/ribbed back - blue - super electric, as nice as they get
- 300 213. Grape & Cable perfume bottle w/stopper - marigold - nice, scarce
- 350 214. Stippled & Banded Grape & Cable pin tray - marigold - super pretty, scarce
- 150 215. Grape & Cable dresser tray - marigold - nice - example
- 145 216. Grape & Cable cologne bottles w/stoppers(2) - marigold - scarce, choice
- 125 217. Grape & Cable powder jar - marigold - very pretty
- 175 218. Grape & Cable hatpin holder - marigold - pretty & highly desirable
- 1600 219. Persian Medallion 9" plate - blue - super pretty green & blue irid., a fantastic plate
- 175 220. Persian Medallion 6" plate - blue
- 25 221. Persian Medallion 6" plate - marigold - has yellow irid., different
- 900 222. M'burg Peacock at Urn master IC shaped bowl - green - radium & nice, a very rare bowl
- 125 223. Orange Tree punch bowl - white - frosty & pretty, who has the base?
- 175 224. Open Rose 9" plate - amber - scarce
- 65 225. Open Rose 9" plate - marigold
- 500 226. Poppy Show vase - marigold - pretty pink & yellow irid. highly desirable
- 1000 227. Stippled Three Fruits 9" plate - blue - super pretty example, rare
- 400 228. Stippled Three Fruits 9" plate - purple - very pretty even irid., scarce
- 145 229. Stippled Three Fruits 9" plate - marigold - pretty
- 245 230. Nippon ruffled bowl w/BW back - green - pretty, scarce
- 1300 231. **GOOD LUCK 9" PLATE W/RIBBED BACK - ICE BLUE - ONE OF JUST A FEW KNOWN, FANTASTIC IRID. & COLOR, CHIP OFF BACK OF POINT, NEAT! From the Moore Collection.**
- 350 232. M'burg Peacock 10" ruffled bowl - amethyst - radium & nice, scarce
- 800 233. Singing Birds 5 pc. water set - green - super pretty, highly desirable
- 450 234. Eat Paradise Soda's adv. 6" plate - amethyst - scarce, nice
- 85 235. Fenton's Grape & Cable 7" ruffled bowl - aqua - scarce
- 700 236. N's Dandelion tankard water pitcher - purple - fantastic irid. on this rare tankard, pretty
- 45 237. N's Dandelion tumblers (3) - purple - one has 1914 etching, choice
- 500 238. N's Dandelion tankard 7 pc. water set - marigold - super pretty example w/matching tumblers
- 375 239. N's Dandelion mug - aqua opal - scarce & desirable, a collector's favorite
- ___ 240. Dandelion mug - green - nick on base, scarce color
- 1050 241. Heavy Grape chop plate - purple - super pretty irid., Imperial at its best
- 475 242. Vintage 7" plate - green - nice, scarce
- 1000 243. Leaf Chain 9" plate - blue - very pretty & highly desirable, super plate *connected edge*
- 175 244. Nippon PCE bowl - ice blue - nice
- 1000 245. Spector's Dept Store Heart & Vine 9" plate - marigold - dark & pretty, super example of this rare plate
- ___ 246. Beaded Cable rosebowl - aqua opal - nice *(Stalen Drm)*
- 145 247. Beaded Cable rosebowl - blue
- 200 248. Stippled Good Luck 9" plate w/ribbed back - purple - rare stippled, has nick on horseshoe
- 105 249. English Hen on Nest - blue
- 3450 250. **STIPPLED GRAPE & CABLE PCE BOWL W/RIBBED BACK - AQUA OPAL - SUPER PASTEL EXAMPLE W/LOTS OF OPAL, A FANTASTIC PIECE OF GLASS!**
- 200 251. Stippled Grape & Cable PCE bowl w/ribbed back - ice blue - also scarce & pretty
- 275 252. Daisy & Plume ftd rosebowl w/Berry interior - blue - very pretty, minor pinpoints on feet, nice
- 600 253. Grape & Cable pin dish - ice blue - made from punch cup, extremely rare plus has pretty irid.
- 650 254. M'burg Courthouse ruffled bowl - amethyst - radium & super, a pretty example
- 475 255. Persian Medallion bon bon - red - rare & desirable, nice bon bon
- 85 256. Fenton's Flowers rosebowl - blue - nice
- 1300 257. Fenton's Grape & Cable ftd ruffled bowl - celest blue - very pretty stretchy irid. on this rare bowl, a dandy
- 60 258. Stippled Grape & Cable bon bon *B. Steel* - marigold - pretty
- 900 259. Embroidered Mums ruffled bowl w/ribbed back - ice blue - pretty example for these, has a good frosty look
- 155 260. Imperial Grape 6" plate - marigold
- ___ 261. Fruits & Flowers 10" ruffled bowl - ice green - super pretty irid., dark & rare
- 205 262. Nippon 9" plate w/BW back - green - very rare plate & pretty, has nick on back of point
- 500 263. Gevurtz Bros. Furniture & Clothing adv. ruffled bowl - amethyst - rare & highly desirable, pretty
- 35 264. Cherry Chain 6" plate - blue
- 700 265. N's Peacock at Urn chop plate - purple - extremely rare & pretty
- 45 266. Vintage fernery - blue
- 200 267. Homestead chop plate - purple - fantastic w/super mold work, minor pinpoints in Greek Key pattern, otherwise a real beauty



- 184,000
- 30-1 25-1
- 300 268. Ripple 10" vases (2) - marigold - choice
 - 1700 269. Jockey Club adv. ruffled bowl - amethyst - fantastic irid., highly desirable
 - 300 270. Enameled Lake Scene lamp base - marigold - neat base, needs cloth shade
 - 300 271. Stippled Grape & Cable ruffled bowl w/ribbed back - purple - pretty irid. & rare
 - 150 272. Blackberry Spray 2 sides up hat - cherry red color & scarce
 - 700 273. M'burg Vintage 9" IC shaped bowl w/Hobnail back - marigold - satin & pretty, a rare bowl
 - 400 274. Apple Blossom Twigs 9" plate w/smooth edge - peach opal - very nice & very scarce
 - 700 275. Stippled Strawberry PCE bowl w/ribbed back - marigold - super pink & yellow irid., pretty
 - 600 276. Peacock & Grape IC shaped bowl - red - rare & desirable, small amount of amber in the base
 - 85 277. Pinecone 7" plate - marigold
 - 800 278. Daisy & Drape straight top vase - aqua opal - pretty butterscotch example, highly desirable
 - 750 279. Dragon & Strawberry IC shaped bowl - marigold - dark & pretty, scarce
 - 400 280. Zipper Loop kerosene lamp - marigold - 8" tall, 5 1/2" base, scarce
 - 5 281. Sun's Up hatpin - lavender - scarce hatpin *cracked to be fixed together*
 - 155 282. Dimples & Brilliants hatpin - dark - scarce
 - 95 283. Waves hatpin - chocolate
 - 55 284. Tufted Throw Pillow hatpin - dark
 - 115 285. Bars & Beads hatpin - dark
 - 1000 286. Stippled Peacocks 9" plate - blue - super pretty example, highly sought after pattern
 - 700 287. Stippled Peacocks 9" plate - marigold - fantastic, beautiful plate
 - 40 288. Stretch glass rosebowl - opaque blue
 - 175 289. Grape & Cable hatpin holder - ice blue - has large chip on foot, very rare & highly desirable
 - 400 290. Grape & Cable hatpin holder - green - very pretty, scarce
 - 500 291. Isaac Benesch & Son's adv. ruffled bowl - amethyst - scarce bowl
 - 65 292. Stretch glass candlesticks - celest blue
 - 1800 293. Open Rose 9" plate - purple - fantastic color & irid. on this rare plate, minor pinpoints on one rose
 - 45 294. Starlyte gas shade - marigold
 - 300 295. Wishbone ftd ruffled bowl - white - frosty, nice & very scarce
 - 275 296. M'burg Trout & Fly ruffled bowl - marigold - satin, pretty
 - 25 297. Orange Tree wine glass - marigold
 - 700 298. Fern Brand Chocolates 6" adv. plate - amethyst - super pretty example, scarce
 - 150 299. Stippled Peacocks ruffled bowl w/ribbed back - marigold - pretty & scarce
 - 30 300. Tiger Lily tumbler - purple
 - 1600 301. Lotus & Grape 9" plate - amethyst - super pretty & rare, not many around
 - 2700 302. Lotus & Grape 9" plate - green - also rare & nice, a great pair of plates for the end of the sale
 - 35 303. Wide Panel epergne small lily - green
 - 50 304. Swan salt - celest blue
 - 55 305. Swan salt - ice green
 - 35 306. Wide Panel shade - marigold on milkglass
 - 25 307. Sailboat ruffled sauce - marigold
 - 25 308. Grape & Cable punch bowl base - purple
 - 10 309. Large insulator - marigold
 - 10 310. Snow Fancy punch cup - marigold *BROKEN ARCHES*
 - 65 311. Big Butterfly hatpin - dark
 - 15 312. Pair of candlesticks - marigold
 - 10 313. Leaf Chain 7" plate - marigold - chip on point
 - 20 314. Footed Shell large dish - amethyst
 - 315. Bouquet tumblers (5) - marigold
 - 25 316. Dutch Boy ashtray - marigold
 - 60 317. Covered Duck - marigold

Texas Carnival Glass Club Millennium Convention Registration Form -- Early Registration, Now - February 11, 2000

PLEASE PRINT CLEARLY

Name(s): _____

Address: _____

City/State/Zip: _____

Phone: _____ E-mail: _____

Information above will be used to make the new TCGC Roster

Convention Registration Fee	_____ @ \$5.00 per family	\$ _____
Thursday Night BBQ Dinner	_____ @ Complimentary	\$ 0.00
Friday Night Buffet Dinner	_____ @ \$20.00 each	\$ _____
Saturday Night Banquet	_____ @ \$25.00 each	\$ _____
TCGC Membership (one year) Inside USA	_____ @ \$20.00 per family	\$ _____
TCGC Membership (one year) Outside USA	_____ @ \$25.00 per family	\$ _____
TCGC 2000 T-Shirt (one size)	_____ @ \$15.00 each	\$ _____
	Total	\$ _____

Carnival Glass Room Display: Yes or No

Make Checks Payable To: Texas Carnival Glass Club

Please mail this form to: Matzi Thrasher, 611 W. Main Street, Tomball, Texas 77375-5500 Phone: 281-351-2202

