

BURNS

AUCTION SERVICE

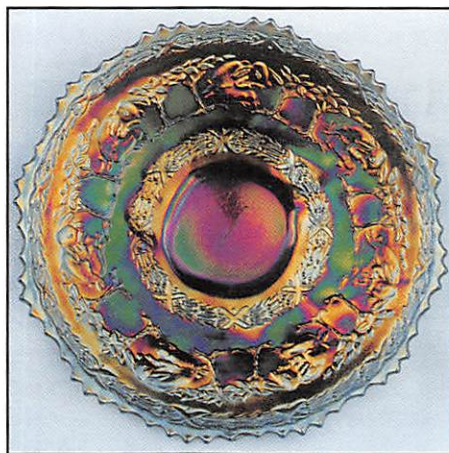
Sunshine State Carnival Glass Association Convention Auction

**Saturday
February 5, 2000
9:00 A.M.**

**Preview: Friday Evening
7:00 A.M. Saturday**

at the
**Ramada Plaza Beach Resort
4060 Galt Ocean Drive
Ft. Lauderdale, Florida 33308**

**(954) 565-6611 or
Fax (954) 564-7730**



I thought I'd let all you folks know how much I enjoy the wonderful winters here in the northeast... I DON'T! That's the reason I love my job – February Florida Convention Auctions!!

We are elated to present to you the second running of the Sunshine State Carnival Glass Association Convention auction to be held at the Ramada Plaza Beach Resort in Fort Lauderdale, Florida on Saturday, February 5, 2000.

This year's collection is a barn burner from the collection of Maury and Peggy Fulkerson from Michigan. These folks quietly collected for 20 years and acquired many outstanding items with outstanding color and quality. This will be an auction you'll want to attend!

The Ramada Plaza Beach Resort of Fort Lauderdale, Florida, will host the event. To find the Resort just take the Oakland Park Exit off I-95 and take the road east to the beach (it's just a tad north when ya get there).

The Sunshine State members have an interesting schedule ready for us, with the one day Bahama Cruise on Thursday and the auction on Saturday morning. There will be plenty to do and there should be a bunch of people there to do it with. Plus look at it this way... it beats SNOW DRIFTS!!

For more information call Convention Chairman Jackie Poucher at (727) 398-1866 or Email: jpoucher1@aol.com.

Mail bids, e-mail bids, phone bids, etc. are due by Tuesday, February 1, 2000.

CHECK OUT BURNS AUCTION SERVICE ON THE WEB!

Visit our new Web site for information on upcoming auctions, complete auction listings and photos of auction highlights.

You can e-mail your bids or requests for information.

<http://carnival.ksnews.com/burnsauction> e-mail: brnzauctsv@aol.com

BURNS AUCTION SERVICE

Tom Burns
P.O. Box 608
Bath, New York 14810
(607) 776-7942

Bill Richards
44 Water St., Poland, OH 44514
(330) 757-2001
FAX (330)-757-4917

Bill Richards, III
2253 Country Lane
Poland, OH 44514
(330) 755-2620

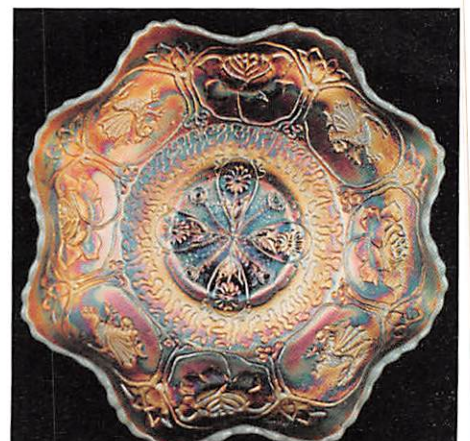
Mail Bids honored under the following conditions.

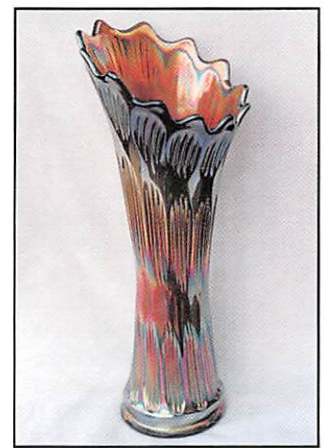
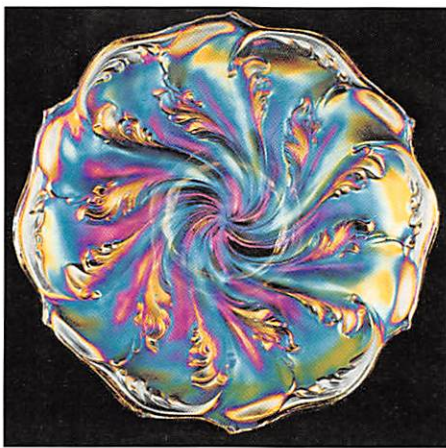
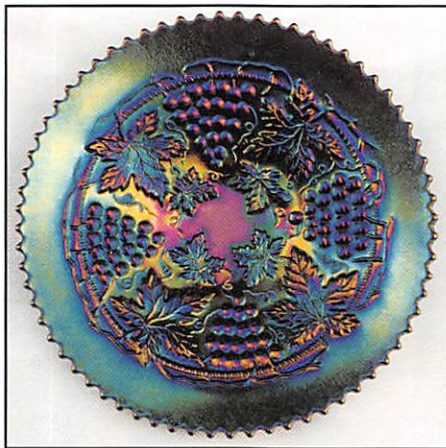
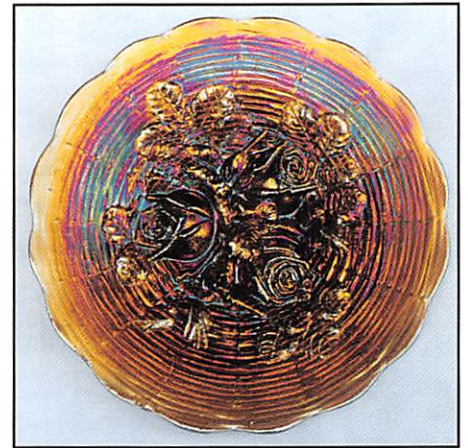
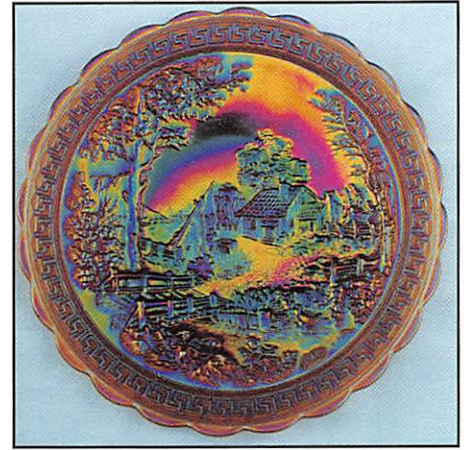
1. No deposit required, Bidders will take full responsibility to honor any and all bids we execute for them. Payment in full plus postage and handling required after notification and before we ship any item to them.
2. Items are bid on in perfect condition with average or above average iridescence OR as listed in the brochures.
Bids will not be carried out when damage on an item has been found during the auction. **PEOPLE PRESENT AT AUCTION ARE RESPONSIBLE FOR FINDING ANY PINHEADS, WEAR, SPOTTINESS, MANUFACTURER'S DEFECTS OR ANY OTHER MINOR FLAWS, ETC.**
3. Successful bidders will be notified by collect call from the auctioneer (so be sure to include the phone number).
4. Phone inquiries about the glass or any other questions are welcome.
5. If you have some other person at the auction bidding for you, they must pay for the item before taking it.
6. Any terms or conditions given the day of the auction will supersede any previously published information.
7. Mail, e-mail, fax and phone bids are due by Tuesday, February 1, 2000.

*Due to brochure size, some bold print items are not highlighted.

- | | | | |
|-----------|--|-----------|---|
| _____ 1. | 1984 Encore Miniature Farmyard Handled Basket by Fenton – P. Opal. (attractive item) | _____ 21. | 10" M'burg Seaweed Bowl w/ 3 in 1 edge – Amyth. (rare and attractive satiny example; has manuf. split on edge and tiny chip on mold line) |
| _____ 2. | 1993 C.C.G.A. Venetian Line Spittoon – Red (unusual souvenir) | _____ 22. | 10" M'burg Seaweed Bowl w/ 3 in 1 edge – Green (very scarce w/ nice satiny irid.) |
| _____ 3. | 1982 H.O.A.C.G.A. Corn Vase – Lavender (attractive item) | _____ 23. | 8-3/4" M'BURG SEAWEED 6 RUFFLED BOWL – MARI. (VERY RARE SIZE FOR THIS ITEM; HAS NICE SATINY FINISH) |
| _____ 4. | Imperial Soda Gold (or Crackle) Car Vase in Metal Frame – Mari. | _____ 24. | 10" M'burg Many Stars Bowl w/ 3 in 1 Edge and 6 Pointed Star – Lt. Mari. (scarce shape; has hardly any interior irid.) |
| _____ 5. | Canada Dry Sparkling Orange Soda Bottle – Mari. (w/complete original label) | _____ 25. | 8-1/2" M'burg Trout and Fly I.C. Shaped Bowl – Green (popular and desirable item w/ a nice satiny finish) |
| _____ 6. | 1911 Rochester, N.Y. Shriners Champagne Glass – Clear (nice decoration) | _____ 26. | 10" M'burg Hanging Cherries Lg. Ice Cream Bowl – Amyth. (scarce w/ a nice satiny finish) |
| _____ 7. | M'burg Hobnail Rose Bowl – Amyth. (very scarce and attractive item) | _____ 27. | 10-10-1/4" M'burg Hanging Cherries Lg. 6 Ruffled Bowl – Mari. (another example w/ a nice satiny finish) |
| _____ 8. | M'burg Hobnail Rose Bowl – Mari. (very scarce; nice dark color) | _____ 28. | 9-3/4" M'burg Grape Leaves 6 Ruffled Bowl – Mari. (rare and radium; has 2 chips on edge) |
| _____ 9. | M'burg Swirl Hobnail Rose Bowl – Mari. (scarce; dark color w/ light irid.) | _____ 29. | 9" M'burg Rays and Ribbons I.C. Shaped Bowl – Mari. (scarce shape; nice radium finish) |
| _____ 10. | 7" M'BURG 1910 B.P.O.E. DETROIT 2-EYED ELKS I.C. SHAPED BOWL – AMYTH. (SUPER RARE AND VERY DESIRABLE; GREAT RADIUM FINISH) | _____ 30. | 9-1/2" M'burg Primrose Bowl w/ 3 in 1 Edge – Amyth. (very unusual shape for this pattern; sorta radium and satiny finish) |
| _____ 11. | 7-1/4" M'burg Lettered Courthouse 6 Ruffled Bowl – Amyth. (rare and very desirable; super radium) | _____ 31. | 9-3/4" M'burg Peacock at the Urn Lg. Ice Cream Bowl – Green (scarce and desirable; has bee; no beading; silver interior) |
| _____ 12. | M'burg Holly Sprig Oval 2 Handled Bon Bon – Amyth. (radium; irid. light in pattern) | _____ 32. | 9-1/4" M'burg Peacock at the Urn "Mystery" Bowl w/ 3 in 1 edge – Green (radium and a super example) |
| _____ 13. | M'burg Holly Sprig Handled Card Tray w/ Benesch 54th Anniversary – Mari. (scarce; nice satiny finish) | _____ 33. | 8-1/2" M'burg Peacock at the Urn "Mystery" 6 Ruffled Bowl – Mari. (satiny and attractive; manuf. peeling on edge) |
| _____ 14. | 6" M'burg "The Great House of Isaac Benesch and Sons" 6 Ruffled Bowl – Amyth. (scarce and desirable; may have light spot in pattern) | _____ 34. | 9-1/2" M'burg Fleur de Lei Domed Bowl w/ 3 in 1 Edge – Green (scarce item in good shape; has goldish/ silver irid.) |
| _____ 15. | M'burg Sunflower Handled Pin Tray – Amyth. (rare and desirable; perfect w/ nice color and detail) | _____ 35. | 9-1/2" N POPPY SHOW PLATE – GREEN (FANTASTIC EXAMPLE; PERFECT AND A BEAUT – SUPER RARE!) |
| _____ 16. | M'burg Sunflower Handled Pin Tray – Green (rare, very desirable and very attractive; has small flake on edge by excessive glass) | _____ 36. | 9-1/4" N POPPY SHOW PLATE – BLUE (RARE AND DESIRABLE W/ RED AND BLUE HIGHLIGHTS) |
| _____ 17. | 10-1/4" M'burg Rosiland Lg. 6 Ruffled Bowl – Amyth. (nice color and irid. but has a chip on collar base) | _____ 37. | 9-1/4" N Poppy Show Plate – Mari. (rare and desirable; nice finish; small chip on pattern) |
| _____ 18. | 10-14" M'burg Rosiland Lg. 6 Ruffled Bowl – Green (scarce; nice satiny irid.) | _____ 38. | 9" N Poppy Show Plate – White (very scarce; great irid.; nice) |
| _____ 19. | 10" M'burg Rosiland Lg. 6 Ruffled Bowl – Mari. (scarce; nice color and satiny finish) | | |
| _____ 20. | M'BURG ROSE COLUMNS VASE – AMYTH. (RARE ITEM; PERFECT W/ SILVERY/ GOLD IRID.) | | |

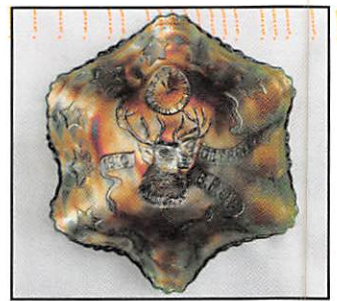
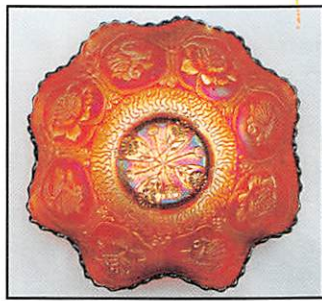
39. 8-3/4" N ROSE SHOW VARIANT 8 RUFFLED BOWL W/ RIBBED EXT. – RENNINGER BLUE (ONE OF THE BETTER EXAMPLES WE'VE SOLD; NICE)
40. 8-3/4" N ROSE SHOW 8 RUFFLED BOWL – PURP. (HAS TO BE ONE OF THE BETTER EXAMPLES AROUND; GREAT MULTI-COLORED IRID.)
41. 9" N Rose Show 8 Ruffled Bowl – Amyth. (another nice example w/ reds and blues)
42. 8-3/4" N Rose Show 8 Ruffled Bowl – Aqua Opal. (very desirable w/ a touch of butterscotch)
43. 8-1/2" N Rose Show 8 Ruffled Bowl – Ice Blue (rare and desirable; nice multi-colored irid.)
44. 8-3/4" N Rose Show 8 Ruffled Bowl – Dk. Mari. (very scarce and desirable; nice even dark color)
45. 9-1/2" N Rose Show Plate – Amyth. (rare and desirable; perfect w/ nice color and irid.)
46. 9-1/2" N Rose Show Plate – Odd Amyth. (rare and desirable; has an odd tint and multi-colored irid.)
47. 9-1/4" N Rose Show Flared Plate – Dk. Mari. (rare and desirable; nice dark color; is slightly crooked)
48. 9-1/2" N Rose Show Plate – White (very scarce and desirable; nice and frosty w/ nice irid.)
49. N Hearts and Flowers Stemmed 6 Ruffled Compote w/ Ribbed Ext. – Aqua Opal. (rare and always desirable; nice irid. and opal. w/ bit of butterscotch)
50. **N HEARTS AND FLOWERS STEMMED 6 RUFFLED COMPOTE W/ RIBBED EXT. – GREEN (GREAT EXAMPLE; RARE W/ NICE MULTI-COLORED IRID.)**
51. N Hearts and Flowers Plate w/ Ribbed Ext. – Green (very rare and very desirable; looks green; has a bit of pigment in glass)
52. **N HEARTS AND FLOWERS BOWL W/ PCE AND RIBBED EXT. – LIME ICE GREEN (SUPER EXAMPLE OF A VERY RARE ITEM; GREAT COLOR AND IRID.)**
53. N Hearts and Flowers 8 Ruffled Bowl w/ Ribbed Ext. – Ice Green (very scarce and desirable; an excellent example)
54. N Hearts and Flowers 8 Ruffled Bowl w/ Ribbed Ext. – Ice Blue (another nice example of a desirable pattern)
55. **N PEACOCKS STIPPLED PLATE W/ RIBBED EXT. – ELEC. BLUE (ONE OF THE BETTER EXAMPLES; REDS AND BLUES)**
56. N Peacocks Stippled Plate w/ Ribbed Ext. – Pastel Mari. (super example w/ yellow and blues; nice)
57. N Peacocks Plate w/ Ribbed Ext. – Blue (very scarce and nice; has even multi-colored irid.)
58. N Peacocks Plate w/ Ribbed Ext. – Ice Blue (rare and very desirable; nice bright irid.)
59. N Peacocks Plate w/ Ribbed Ext. – Ice Green (scarce item w/ very nice color and irid.)
60. N Peacocks Flat Plate w/ Plain Ext. – Green (rare item w/ an unusual bright yellow/good irid.)
61. N Peacocks Plate w/ Plain Ext. – White (very scarce; frosty w/ bright irid.)
62. **N PEACOCKS BOWL W/ PCE AND RIBBED EXT. – ELEC. BLUE (RARE AND DESIRABLE; HAS BRIGHT BLUE HIGHLIGHTS)**
63. N Peacocks Bowl w/ PCE and Ribbed Ext. – Blue/ Elec. Blue (another nice example; has manuf. flat points)
64. N Peacocks Bowl w/ PCE and Ribbed Ext. – Dk. Mari. (scarce; a very attractive example; dark and rich)
65. N Peacocks 8 Ruffled Bowl w/ Ribbed Ext. – Aqua Opal. (rare and desirable; has great irid. and opal. near points)
66. N Peacocks 8 Ruffled Bowl w/ Ribbed Ext. – Purp. (very scarce w/ nice multi-colored irid.)
67. N Peacocks 8 Ruffled Bowl w/ Ribbed Ext. – Green (rare and desirable base color w/ silvery/ gold irid.)
68. N Peacock at the Urn Lg. Ice Cream – Ice Green (rare and very desirable; has great color and irid.)
69. N Peacock at the Urn Lg. Ice Cream – Ice Blue (another rare item w/ really nice base color and irid.)
70. N Peacock at the Urn All Over Stippled Lg. Ice Cream Bowl – Blue/ Elec. Blue (very rare and very desirable; has a nice even attractive irid.)
71. (4) N Peacock at the Urn All Over Stippled Ind. Ice Cream Bowls – Blue/ Elec. Blue (very rare especially because they match the above nicely)
72. N Peacock at the Urn Lg. Ice Cream Bowl – Amyth. (very scarce and desirable; has nice bright highlights)
73. N Peacock at the Fountain Stemmed 6 Ruffled Compote w/ Plain Exterior – White (rare and very desirable; has goldish highlights)
74. N Peacock at the Fountain Ftd. Ruffled Fruit Bowl – Elec. Blue (very desirable w/ bright blue highlights; small flake on base of one foot)
75. N Wishbone 2 Pc. Epergne – Purp. (very scarce and very desirable; actually quite an attractive example)
76. 9-1/2" N Wishbone Bowl w/ PCE and Basketweave Ext. – White (rare and desirable; frosty w/ light multi-colored irid.)
77. 8-1/2" N Wishbone Ftd. Plate w/ Ruffles and Rings Ext. – Purp. (very scarce and very desirable; satiny finish)
78. 7-1/2" N Wishbone Deep 8 Ruffled Ftd. Bowl w/ Ruffles and Rings Ext. – Dk. Mari. (very nice dark example)
79. (3) N Acorn Burr Handled Punch Cups – Green (selling choice; (2) have a marigold overlay)
80. **8-3/4" N EMBROIDERED MUMS BOWL W/ PCE AND RIBBED EXT. – SAPPHIRE (EXTREMELY RARE BOTH IN COLOR AND SHAPE; GREAT BASE COLOR W/ SATINY MULTI-COLORED IRID.)**
81. 8-1/2" N Embroidered Mums 8 Ruffled Bowl w/ Ribbed Ext. – Elec. Blue (rare and very desirable w/ blue irid.)
82. 8-3/4" N Embroidered Mums 8 Ruffled Bowl Ext. – Purp. (very scarce; nice color w/ goldish highlights)
83. 8-1/2" N Nippon Bowl w/ PCE and Basketweave Ext. – White (very scarce variation; frosty w/ great irid.)
84. 8-1/2" N Nippon Bowl w/ PCE and Ribbed Ext. – Ice Blue (very scarce and desirable; has super irid.)
85. 8-1/2" N Nippon Bowl w/ PCE and Ribbed Ext. – Elec. Purp. (fantastic item; elec. yellow center surrounded by elec. blue)
86. **8-3/4" N SUNFLOWER FTD. 8 RUFFLED BOWL W/ MEANDER EXT. – ELEC. BLUE (ANOTHER SUPER ITEM; HAS BRIGHT BLUE IRID.)**
87. 6-1/2" N Tornado Lg. 3 Ruffled Vase – Green (rare and very desirable; perfect w/ a satiny finish)
88. 6" N Tornado Small 3 Ruffled Vase – Purp. (rare and desirable; perfect w/ nice multi-colored irid.)
89. 5-1/2" Tall x 4-1/2" Top N Diamond Point Squatty Vase – Amyth. (has a satiny finish but is a really unusual size and shape)
90. **12-1/2" TALL N DIAMOND POINT SWUNG VASE – AQUA OPAL. (RARE AND VERY DESIRABLE; GREAT PASTEL EXAMPLE W/ SUPER IRID.)**
91. 10" Tall N Diamond Point Swung Vase – Teal or Sapphire (extremely rare base color for this pattern; super item w/ small manuf. check in base)
92. 10" Tall N Diamond Point Swung Vase – Ice Blue (rare and very desirable; nice color and irid.)
93. 11" Tall N Diamond Point Swung Vase – Purp. (very attractive; really nice dark color and irid.)
94. 9-1/2" Tall N Diamond Point Swung Vase – Green (scarce; nice color and irid.)
95. 8" Tall N Diamond Point Swung Vase – Ice Green (very scarce and very desirable; neat size and nice irid.)
96. 13" Tall x 4-1/2" Base N Thin Rib Mid Size Swung Vase – Purp. (scarce; has a satiny finish)
97. 10-1/2" Tall N Thin Rib Standard Swung Vase – Odd Amyth. (just seems to have a different look)
98. 12-3/4" Tall x 4-1/2" Base N Tree Trunk Mid Size Swung Vase – Green (very scarce and desirable; nice brighter irid.)
99. 12" Tall x 4-1/2" Base N Tree Trunk Mid Size Swung Vase – Purp. (scarce; nice color and irid.)
100. **9-3/4" TALL N TREE TRUNK STANDARD SWUNG VASE – AQUA OPAL. (RARE AND VERY DESIRABLE; HAS A DARK BUTTERSCOTCH OVERLAY)**
- 100A. **17" TALL X 5-3/4" BASE N. TREE TRUNK SWUNG FUNERAL VASE – GREEN (EXTREMELY RARE AND DESIRABLE ITEM; NICE COLOR; MAY HAVE MANUF. PEELING ON EDGE)**
101. 10-1/2" Tall N Tree Trunk Standard Swung Vase – Green (nice color and irid.)
102. 10-1/4" Tall N Tree Trunk Standard Swung Vase – White (scarce; nice irid. and frosty)
103. 8-1/2" Tall N Tree Trunk Standard Swung Vase – Purp. (nice color and irid.)
104. N Corn Vase w/ Stalk Base – Ice Green (very scarce and very desirable; really nice irid.)
105. N Ivy Town Pump – Purp. (rare and desirable; perfect w/ nice irid.)
106. 7-3/4" N Drapery Swung Vase – Ice Green (very scarce and desirable; dark base color and perfect feet)
107. 7-1/2" N Drapery Swung Vase – Dk. Mari. (scarce; has nice dark color)
108. (2) N G & C Tumblers – Purp. (selling choice; both have bright blue irid.)
109. N G & C Cologne Bottle Stopper Only – Mari. (very scarce part if you need it; nice color)
110. **8-3/4" N G & C VARIANT PLATE W/ RIBBED EXT. – SAPPHIRE (EXTREMELY RARE AND VERY DESIRABLE; GREAT COLOR AND IRID.)**
111. 9" N G & C Plate w/ Plain Ext. – Purp. (has to be one of the best; super irid. w/ a stretch effect)
112. 10-1/4" N G & C Lg. Ice Cream Bowl w/ Basketweave Ext. – Purp. (very scarce; nice color and satiny irid.)
113. N G & C 2 Pc. Candle Lamp – Purp. (rare and very desirable; pretty well matched set)
114. N G & C 4 Pc. Table Set – Green (rare color for this set; may be rough around some thumbprints)
115. N G & C Ftd. Hatpin Holder – Purp. (very scarce and always desirable; satiny finish)
116. N G & C Ftd. Hatpin Holder – Green (very scarce as above; also has a satiny finish)
117. N G & C Ftd. Hatpin Holder – Mari. (nice color; scarce; has a small smoothed spot on foot)





118. N Singing Bird Tumbler – Green (super example w/ yellow highlights)
119. N Singing Bird Handled Mug – Purp. (nice color; satiny)
120. **9" N THREE FRUITS STIPPLED PLATE W/ RIBBED EXT. – AQUA OPAL. (VERY RARE AND VERY DESIRABLE; A SUPER PASTEL EXAMPLE W/ NO WEAR; IT IS A BIT CROOKED)**
121. 9" N Three Fruits Stippled Plate w/ Ribbed Ext. – Elec. Blue (fantastic example that would look good in anyone's collection)
122. 9" N Three Fruits Stippled 8 Ruffled Bowl w/ Ribbed Ext. – Mari. (scarce; attractive example w/ multi-colored irid.)
123. 8-1/2" N Three Fruits 8 Ruffled Bowl w/ Plain Ext. – Green (bright base glass w/ a nice multi-colored finished)
124. N Fruit and Flowers Stemmed 2 Handled Bon Bon – Elec. Blue (super example w/ bright highlights)
125. 8-3/4" N Three Fruits Medallions Stippled Ftd. 8 Ruffled Bowl and Meander Ext. – Aqua Opal. (rare and desirable; sorta pastel; nice)
126. 8-3/4" N Three Fruits Medallions Stippled Ftd. 8 Ruffled Bowl and Meander Ext. – Aqua Opal. (another nice example w/ pastel highlights)
127. 9" N Three Fruits Medallion Stippled Ftd. 8 Ruffled Bowl and Meander Ext. – Ice Green (rare and desirable; nice base color and irid.)
128. 9" N Three Fruits Medallion Stippled Ftd. 8 Ruffled Bowl and Meander Ext. – Elec. Blue (rare base color w/ blue highlights)
129. N Leaf and Beads Ftd. Rose Bowl – Lt. Amyth. (nice color and irid.)
130. N Leaf and Beads Ftd. Rose Bowl – Aqua Opal. (super pastel example; excellent item)
131. N Beaded Cable Ftd. Rose Bowl – Aqua Opal. (probably one of the better butterscotch examples)
132. N Drapery Rose Bowl – Aqua Opal. (very scarce w/ nice opal. and irid.)
133. 8-3/4"-9" N Greek Key Bowl w/ PCE and Basketweave Ext. – Green (great example w/ bright base color and nice irid.)
134. 8-3/4" N Greek Key 8 Ruffled Bowl w/ Basketweave Ext. – Purp. (scarce; nice satiny example)
135. **6-1/2" N DAVIDSON'S SOCIETY CHOCOLATES 2 SIDED CARD TRAY W/ BASKETWEAVE EXT. – AMYTH. (HAS TO BE ONE OF THE VERY BEST ADVERTISING ITEMS THAT THERE IS; UNBELIEVABLE!)**
136. (6) N Dreibus Parfait Sweets Flat Plate w/ Basketweave Ext. – Lt. Amyth./ Mari. (rare item w/ an unusual tint; has a chip on the collar base)
137. N Dandelion Handled Mug – Aqua Opal. (rare and desirable; nice opal. w/ super irid.)
138. N Dandelion Handled Mug w/ Knights Templar Adv. – Dk. Mari. (excellent example; dark and perfect)
139. N Dandelion Handled Mug w/ Knights Templar Adv. – Ice Green (rare and very desirable; nice base color)
140. N Dandelion Handled Mug w/ Knights Templar Adv. – Ice Blue (excellent example; rare and very underpriced)
141. 8-1/2" N Strawberry Stippled Bowl w/ PCE and Basketweave Ext. – Green (very rare item if you're looking for one; excellent)
142. 8-3/4" N Strawberry Stippled Ruffled Bowl w/ Ribbed Ext. – Purp. (very scarce item; has bright multi-colored irid.)
143. 8-3/4" N Strawberry Stippled Ruffled Bowl w/ Ribbed Ext. – Mari. (very scarce item; has a nice satiny look)
144. 8-3/4" N Good Luck Ruffled Bowl w/ Ribbed Ext. – Odd Lime Green (a super item; odd base color w/ a yellow tint w/ bright yellow irid.)
145. 9" N Good Luck Plate w/ Basketweave Ext. – Purp. (rare and desirable; has nice multi-colored irid.)
146. 9-1/4" Good Luck Plate w/ Basketweave Ext. – Green (rare and desirable; nice satiny finish)
147. 9" N Good Luck Plate w/ Basketweave Ext. – Lt. Mari. (scarce item w/ lighter irid.)
148. 8-3/4" N Good Luck Stippled Bowl w/ PCE and Ribbed Ext. – Elec. Blue (super scarce item w/ bright irid.; has a chip on the edge)
149. 8-3/4" N Good Luck Bowl w/ PCE and Basketweave Ext. – Green (scarce w/ a nice satiny finish)
150. N Round Handled Bushel Basket – Lime Ice Green (rare and desirable base color; very attractive)
151. N Round Handled Bushel Basket – Aqua Opal. (super example; has opal. on handles and top; super irid.)
152. N Round Handled Bushel Basket – Elec. Blue (excellent example w/ bright blue highlights)
153. N Round Handled Bushel Basket – Purp. (scarce w/ nice color and irid.)
154. N Round Handled Bushel Basket – Dk. Mari. (dark color; pretty nice irid.)
155. N 8 Sided Handled Bushel Basket – Green (rare and desirable; excellent example)
156. N 8 Sided Handled Bushel Basket – Blue (dark cobalt blue w/ silvery irid.)
157. N 8 Sided Handled Bushel Basket – Amyth. (scarce; satiny irid.)
158. N 8 Sided Handled Bushel Basket – Dk. Mari. (nice dark color)
159. N 8 Sided Handled Bushel Basket – White (scarce; nice and frosty)
160. **9" IMPERIAL OPEN ROSE FLAT PLATE – PURP. (FLAT AND AN ABSOLUTELY SUPER EXAMPLE; WOW!)**
161. 9" Imperial Open Rose Flat Plate – Amber. (rare and desirable; blue highlights)
162. 9-1/2" Imperial Pansy Low Ruffled Plate – Amyth. (super irid. on a light base color)
163. Imperial Lustre Rose Tumbler – Purp. (super example w/ bright blue irid.)
164. Imperial Windmill Tumbler – Purp. (another outstanding example; super blues)
165. **10-1/2" IMPERIAL HOMESTEAD CHOP PLATE, SIGNED – AMBER. (VERY RARE AND VERY DESIRABLE; SUPER COLOR AND IRID.; EXCELLENT EXAMPLE)**
166. Imperial Homestead Chop Plate, Not Signed – Purp. (rare and very desirable; great detail and irid.; may have some pinheads)
167. Imperial Chrysanthemum Chop Plate – White (another rare and very desirable item; may have pinheads)
168. Imperial Corn Bottle – Dk. Mari. (super example; dark w/ great irid.; nice top)
169. Imperial Rococco Vase – Dk. Mari. (excellent example; looks to be okay)
170. 10" Imperial Acanthus Chop Plate – Smoke (rare and flat w/ unbelievable blue irid.)
171. 9" Imperial Star of David 8 Ruffled Bowl – Purp. (very scarce; super desirable; super irid.)
172. Imperial Flute Toothpick Holder – Purp. (nice color and perfect)
173. Imperial Flute Toothpick Holder – Helios Green (scarce)
174. Imperial Flute Toothpick Holder – Dk. Mari. (nice color and irid.)
175. 13-1/4" Tall x 10" Top Imperial Morning Glory Swung Funeral Vase – Purp. (rare; desirable shape w/ bright highlights)
176. 13" Tall x 9" Top Imperial Parlor Panels (or Morning Glory) Swung Funeral Vase – Dk. Mari. (super example; nice and dark)
177. 14" Tall x 3-3/4" Base Imperial Ripple Lg. Swung Vase – Odd Aqua/ Green (very odd base color; sorta teal)
178. 12-1/2"-12-3/4" Imperial Ripple Swung Vase – Helios Green (attractive item)
179. 8-3/4" Imperial Ripple Swung Vase – Helios Green (nice size)
180. 11" Tall Imperial Ripple Standard Swung Vase – Teal (rare base color; very attractive)
181. 11" Tall European Star and Fan Lg. Cylinder Vase – Dk. Mari. (rare and unusual; has nice dark color)
182. Maker African Shield (?) Squatty Ruffled Vase w/ Flower Frog – Mari. (scarce; not sure of pattern)
183. 8-1/2" Westmoreland Carolina Dogwood 6 Ruffled Bowl – Blue Opal. (very scarce; nice opal. on edge and nice overlay)
184. 7-1/2" Westmoreland Scales I.C. Shaped Bowl – Blue Opal. (very scarce; nice opal; on edge)
185. 9-1/2" European Four Flowers Variant Flat Plate – Emerald Green (super bright green color w/ great irid.; has manuf. ground base)
186. Cambridge Buzz Saw Small Cruet w/ No Stopper – Green (scarce item; who has the top?)
187. 10" Dugan Lined Lattice Swung Vase – Purp. (scarce and desirable; nice bright irid.)
188. 11-1/2" Tall Dugan Pulled Loop Swung Vase – P. Opal. (nice opal. and overlay)
189. Dugan Mary Ann 2 Handled Vase – Mari. (nice color; has chip on base)
190. 8-1/2" Dugan Double Stem Rose Domed Bowl w/ 3 in 1 Edge – Amyth. (absolutely super item; has light base color and great irid.; no harm flake on base)
191. 7" Dugan Flowers and Frames Domed Deep 10 Ruffled Bowl/ Vase – Purp. (scarce shape and has really bright irid.)
192. Dugan Nautilus Novelty Creamer – Purp. (scarce item w/ nice color and irid.)
193. 5" Dugan Cherries Sauce w/ Tight CRE and Jeweled Heart Ext. – Purp. (scarce shape; round and tight)
194. 7-1/4" Dugan Fishscale Flared Plate w/ Tight Crimped Edge – Amyth. (scarce item; has a goldish irid.)
195. 6-1/2" Dugan Wishbone and Spades Flat Plate – Purp. (very scarce and desirable; nice bright highlights)
196. Dugan Apple and Pear Oval Ruffled Master Berry Bowl – Mari. (satiny finish)
197. 9-1/2" Dugan Round Up Low Ruffled Plate – P. Opal. (scarce; nice example; has a small flake on edge)
198. 8-1/2" Dugan Fanciful Low Ruffled Plate – P. Opal. (scarce; nice opal. and average mari. overlay)
199. 8-3/4" Dugan Fanciful Low Ruffled Plate – White (scarce; has bright irid.)
200. 8-3/4"-9" Dugan Apple Blossom Twig Low Ruffled Bowl/ Plate – Blue (unusual satiny finish; nice item)
201. 9" Dugan Apple Blossom Twig Flared Plate – White (scarce; nice color and has really bright irid.)
202. Dugan Question Mark Stemmed Plate w/ Ga. Peach and Puzzle Ext. – Dk. Mari. (scarce item; has a bright satiny finish)
203. 8-1/4" Dugan Pony 6 Ruffled Bowl – Amyth. (scarce w/ a nice satiny finish)
204. Dugan Heavy Iris Tumbler – Amyth. (scarce; has multi-colored satiny finish)
205. Dugan Honeycomb Rose Bowl – P. Opal. (a beauty; it could have a bit more opal.)
206. Fenton Fluffy Peacock Tumbler – Green (scarce color for this pattern; pinhead on edge)
207. 10" Fenton Vintage Grape Bowl w/ 3 in 1 Edge – Green (nice large example w/ a satiny finish)

208. 9" Fenton Chrysanthemum 8 Ruffled Bowl – Green (very scarce color for this pattern)
209. 8-3/4" Fenton Chrysanthemum 8 Ruffled Bowl – Amyth. (another very scarce color for this pattern)
210. **9" FENTON CHRYSANTHEMUM 8 RUFFLED BOWL – RED (EXTREMELY RARE AND EXTREMELY DESIRABLE; ACTUALLY QUITE A NICE EXAMPLE; LOOKS RED)**
211. **9" FENTON DRAGON AND LOTUS 8 RUFFLED BOWL – RED (SUPER ITEM; ONE OF THE BETTER EXAMPLES WE'VE SOLD LATELY; REALLY NICE)**
212. 8-1/2" Fenton Dragon and Lotus I.C. Shaped Bowl – Red (rare and desirable; has a light goldish irid.)
213. 6-1/2" Fenton Stippled Rays 6 Ruffled Sauce – Red (nice example w/ typical satiny irid.)
214. 6" Fenton Stippled Rays I.C. Shaped Sauce – Red (nice base color w/ silvery irid.)
215. 6-1/2" Fenton Horsehead Medallion Ftd. Nut Bowl – Red (rare and very desirable; nice base color w/ gold highlights)
216. 6-1/2" Fenton Blackberry 2 Row Open Edge Ruffled Hat – Brick Red (scarce and desirable item; nice satiny finish)
217. Fenton 2 Row Open Edge 6 Ruffled Hat – Red (scarce; nice color and satiny finish)
218. Fenton 2 Row Open Edge 2 Sided Hat – Red (scarce; nice base color w/ satiny irid.)
219. 6" Fenton Sailboats 6 Ruffled Sauce – Red/ Brick Red (very scarce item; well above average)
220. **8-1/2" FENTON PEACOCK AT THE URN 8 RUFFLED BOWL – RED (EXTREMELY RARE ITEM W/ SATINY IRID.; HAS A 1" CHECK IN BODY)**
221. 9" Fenton Holly 8 Ruffled Bowl – Red (nice example for this pattern; has open bubble on base)
222. Fenton Holly JIP Crimped Edge Hat – Red/ Amber. (scarce; satiny finish)
223. Fenton Holly 6 Ruffled Hat – Red (scarce; nice example w/ nice base color)
224. Fenton Blackberry Spray 4 Sided Hat – Red (scarce and desirable; nice color and irid.)
225. **PAIR 10-1/2" TALL FENTON COLONIAL (OR FLORENTINE) CANDLESTICKS – RED (FANTASTIC SET; SUPER COLOR AND HAS BRIGHT IRID.; NICE WELL MATCHED SET)**
226. **10-1/2" TALL FENTON PLUME PANELS STANDARD SWUNG VASE – RED (VERY RARE AND VERY DESIRABLE; GREAT COLOR W/ NICE IRID.)**
227. 8-1/2" Tall Fenton Butterfly and Berry Swung Vase – Red (rare and very desirable; bright irid.; has a small flake on edge)
228. 9-1/2" Tall Fenton Fine Rib Swung Vase – Red (excellent example; nice color and irid.)
229. Fenton Orange Tree Standard Flared Handled Mug – Red/ Amber. (very scarce; nice color and detail; pretty nice irid.)
230. 7-1/2" Fenton G & C Low Ruffled Bowl – Red (rare and desirable; dark red w/ satiny irid.)
231. Fenton Persian Medallion 2 Handled 4 Sided Bon Bon – Red/ Amber. (rare and desirable; has dark satiny irid.; may have pinhead on edge)
232. 6-1/2" Fenton Acorn Deep Round Bowl – Red Slag (great base color; irid. is silvery on black)
233. 7" Fenton G & C Low I.C. Shaped Bowl – Mari/ Moonstone (super example; great base color w/ a carmel looking marigold overlay; nice!)
234. 8-1/4" Fenton Plaid I.C. Shaped Bowl – Mari. (scarce pattern; irid. is lighter)
235. **7-1/2" FENTON 1910 DETROIT B.P.O.E. ELKS 6 RUFFLED BOWL – DK. MARI. (ONE OF TWO KNOWN! A RARITY W/ NICE DARK COLOR AND IRID.; SATINY; WOW!)**
236. 7" Fenton 1910 Detroit B.P.O.E. Elks 6 Ruffled Bowl – Amyth. (rare and desirable; nice example w/ a satiny finish)
237. 7-1/2" Fenton 1910 Detroit B.P.O.E. Elks 6 Ruffled Bowl – Green (another rare and desirable item w/ a nice satiny finish)
238. 6-1/2" Fenton 1911 Atlantic City B.P.O.E. Elks I.C. Shaped Bowl – Blue (a super example; great color and detail w/ bright irid.; really nice)
239. 7-1/2" Fenton 1911 Atlantic City B.P.O.E. Elks Flat Plate – Blue (rare and desirable; has a metallic look; flat and nice)
240. 7-1/2" Fenton Illinois Soldiers and Sailors Home Quincy, Illinois Flat Plate – Blue (another rare and attractive Fenton lettered item w/ bright multi-colored irid.; really nice; may have bubble near edge)
241. **6" FENTON BRAZIER'S CANDIES/ GARDEN MUMS FLAT PLATE – AMYTH. (VERY RARE AND VERY NICE; SATINY; SITS A BIT CROOKED)**
242. 5-1/2" Fenton Geo. W. Getts Pianos Grand Forks, North Dakota Round Bowl – Amyth. (super item; perfect w/ a nice satiny irid.; really rare)
243. 6" Fenton Seasons Greetings Eat Paradise Soda Flat Plate – Amyth. (very scarce and very desirable; nice irid.)
244. 9-1/2" Fenton Spector's Department Store/ Heart and Vine Flat Plate – Dk. Mari. (rare and desirable; nice dark bright color and irid.; really nice!)
245. **9" FENTON DRAGON AND LOTUS 8 RUFFLED BOWL – AQUA OPAL. (EXTREMELY RARE AND VERY DESIRABLE; GREAT BASE COLOR; SATINY FINISH AND OPAL. ON EDGE)**
246. 9" Fenton Dragon and Lotus Bowl w/ 3 in 1 Edge – Mari. (scarce shape w/ nice satiny finish)
247. 8" Fenton Dragon and Lotus I.C. Shaped Spatula Ftd. Bowl – Ice Green Opal. (rare and desirable color; nice irid.; very attractive)
248. 7-3/4" Fenton Dragon and Lotus 8 Ruffled Spatula Ftd. Bowl – Amyth. (scarce w/ really nice color and irid.)
249. 10-1/4" Fenton 10 Mums 6 Ruffled Bowl – Blue (rare and desirable; great color and irid.)
250. 7-1/2" Fenton Lions Flat Plate – Dk. Mari. (very rare and very desirable; nice dark satiny finish)
251. 6-1/2" Fenton Lions Deep Round Bowl – Dk. Mari. (dark; nice color and satiny finish)
252. 7-1/2" Fenton Horsehead Medallion Flat Plate – Dk. Mari. (very scarce and desirable; nice dark color and irid.)
253. Fenton Horsehead Medallion Ftd. Rose Bowl – Powder Blue/ Mari. (very rare base color; looks smokey; very tough to find)
254. Fenton Stag and Holly Giant Ftd. Rose Bowl – Mari. (very scarce and desirable; nice dark color and irid.)
255. 10-1/2" Fenton Stag and Holly Lg. 8 Ruffled Ball Ftd. Bowl – Blue (attractive item w/ nice satiny finish)
256. Fenton Orange Tree Ftd. Covered Butter Dish – Blue (very rare item; great color, irid. and detail; pretty nice feet condition)
257. Fenton Orange Tree Ftd. Hatpin Holder – Blue (scarce and desirable; nice color and irid.)
258. 9-1/2" Fenton Orange Tree Flat Plate – Blue (very scarce; flat w/ nice multi-colored irid.)
259. 9" Fenton Thistle 6 Ruffled Bowl – Green (nice satiny irid.)
260. **9-1/4" FENTON PETER RABBIT FLAT PLATE – BLUE (ABSOLUTELY SUPER EXAMPLE; PERFECT W/ GREAT COLOR AND IRID.)**
261. 9-1/2" Fenton Peacock at the Urn Flat Plate – Blue (very scarce; flat w/ nice multi-colored irid.)
262. 9-1/2" Fenton Peacock at the Urn Flat Plate – White (very scarce; nice color and irid.)
263. 9-1/4"-9-1/2" Fenton Peacock at the Urn Flat Plate – Mari. (very scarce; nice color and satiny finish)
264. 8-1/4" Fenton Peacock at the Urn I.C. Shaped Bowl – Dk. Mari. (super, super marigold example; nice!)
265. 8-3/4" Fenton Peacock at the Urn 8 Ruffled Bowl – Green (very scarce base color for this pattern; satiny)
266. 9-1/4" Fenton Captive Rose Flat Plate – Amyth. (very scarce base color w/ goldish irid.)
267. 9-1/4" Fenton Captive Rose Flat Plate – Blue (very scarce w/nice irid. and gold highlights)
268. 9-1/2" Fenton Holly Flat Plate – Dk. Mari. (super, super dark example w/ a radium type irid.)
269. 9-3/4" Fenton Holly Flat Plate – White (flat; frosty w/ excellent irid.)
270. **FENTON BUTTERFLY AND BERRY HANDLED WATER PITCHER – GREEN (RARE AND VERY DESIRABLE; SUPER EXAMPLE W/ EXCELLENT IRID.)**
271. Fenton Butterfly and Berry Tumbler – Green (very scarce and tough to find; satiny finish)
272. 9-1/2" Fenton Ribbon Tie Low Bowl/ Plate w/ 3 in 1 Edge – Blue (very scarce; nice goldish highlights)
273. 9" Fenton Ribbon Tie Low Bowl/ Plate w/ 3 in 1 Edge – Amyth. (scarce base color; satiny; chips on edge)
274. 7-3/4"-8" Fenton Wild Blackberry Bowl w/ T.C. Edge – Green (scarce pattern w/ a nice satiny finish)
275. **19" TALL X 5"-5-1/4" BASE X 8" TOP FENTON DIAMOND RIB SWUNG FUNERAL VASE – AMYTH. (EXTREMELY RARE AND VERY DESIRABLE; NICE BRIGHT SATINY FINISH)**
276. 8-1/2" Tall Fenton Diamond Rib Standard Swung Vase – White (very scarce color for this item; frosty)
277. Fenton 2 Row Open Edge 4 Sided Hat – White (scarce item; great frosty color and irid.)
278. Fenton 2 Row Open Edge 6 Ruffled Hat – Aqua/ Lt. Mari. (scarce base color and overlay)
279. Fenton Blackberry 2 Row Open Edge 6 Ruffled Hat – Green (scarce item in this color; pretty nice)
280. 7-1/2" Fenton 3 Row Open Edge I.C. Shaped Bowl – Ice Green (rare and desirable; frosty and perfect; nice)
281. 7-1/2" Fenton Vintage Grape Flat Plate – Blue (scarce item; nice color and satiny finish)
282. 7" Fenton Pine Cone 6 Ruffled Bowl – Blue (has a satiny-silvery finish; scarce size)
283. 10-3/4" Fenton Two Flowers Lg. Ball Ftd. 8 Ruffled Bowl – Blue (nice large item; nice satiny finish)
284. Pair 10-1/4" Tall N'wood Stretch Colonial Candlesticks – Russet Green (very desirable pair; well matched; nice)
285. Pair 10-1/2" Tall Fenton Stretch Colonial (or Florentine) Candlesticks – Vaseline (very attractive pair; super color and irid.)
286. Pair 10-1/2" Fenton Stretch Colonial (or Florentine) Candlesticks – Ice Green (very scarce and attractive set; nice irid.)
287. Pair 10-1/2" Fenton Stretch (Style) Colonial (or Florentine) Candlesticks – Grecian Gold (very scarce pair; nice dark color)



BURNS

AUCTION SERVICE

P.O. BOX 608 • BATH, NEW YORK 14810

Sunshine State Carnival

Glass Association

Convention Auction

Saturday, February 5, 2000

9:00 A.M.

Preview: Friday Evening

7:00 A.M. Saturday

First Class Mail
U.S. Postage
PAID
Eugene, Oregon
Permit No. 305

