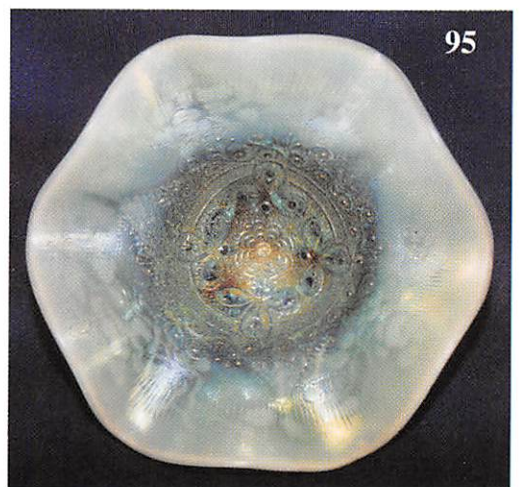
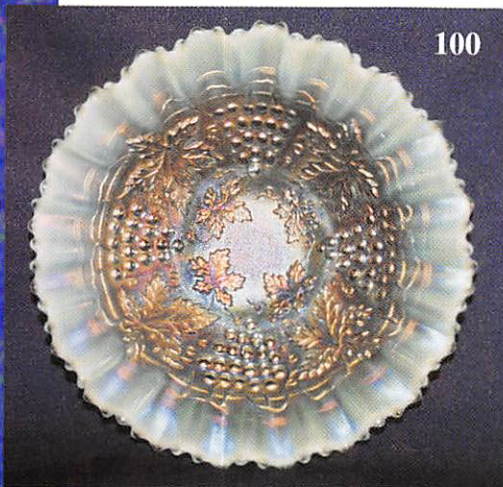
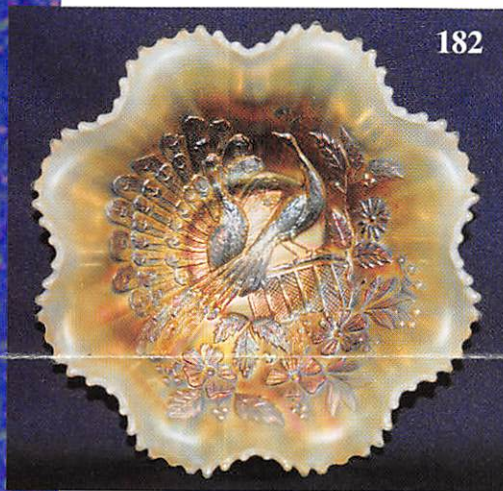


Outstanding Carnival Glass

Saturday, January 22, 2000 – 9:30 a.m.
Collection of Gordon and Charlotte Williams

NOW ON VIDEO!
See page 2



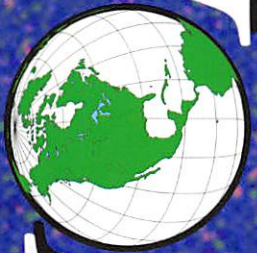
Holiday Inn – Wentzville
900 Corporate Parkway
Wentzville, MO
(Exit 212a off of I-70)

Call (314) 327-7001 for reservations

Seeck Auctions

Jim and Jan Seeck
515-424-1116

AUCTION



Leading the way in the new millennium

SATURDAY, JANUARY 22, 2000 — 9:30 am

Holiday Inn — Wentzville, MO

PREVIEW: Friday, January 21, 3:00 P.M.

NO BUYER'S PREMIUM.

Happy New Year!! We are excited to start the New Year off with a super selection of glass from the Gordon and Charlotte Williams collection of California. Overall, good variety, great quality with excellent iridescence. We are back at the Wentzville Holiday Inn near St. Louis. For **RESERVATIONS:** Call (314) 327-7001 (Please ask for the Seck Auction block of rooms).

Hope you all like our new look. The year 2000 seems as if it should be a year of change and experiment. Following, you will see that we have a video tape available for this auction. Always talked about doing this but we wanted to do it right and we feel the quality is excellent as the video picture looks very close to the actual piece. Chips and cracks are even shown. This should help you with absentee bidding and also you may decide to attend once you view the video. Also, post auction results will be sent to you after the sale which should make for great reference. Try it and let us know how you like it!

NOW ON VIDEO

** Professionally video taped piece by piece of entire auction. ** On one standard VHS videocassette tape.

** Real time indexing to find that certain piece. ** Includes post auction price results.

Available now for \$20.00 plus \$3.20 priority shipping (\$23.20 total)
Internationally available for \$20.00 plus \$6.00 Global Priority Shipping (\$26.00 total)
Send check or money order to: Seck Auctions, PO Box 377, Mason City, IA 50402

ABSENTEE BID POLICY

1. Write-in bids will be accepted by sending the numbers of the item(s) desired and the amount bid on each to:
Seck Auctions, PO Box 377, Mason City, Iowa 50402.
2. If known by Auction Company, bids may be done over the telephone. (515) 424-1116.
3. You may **email** your bids to us: **seeckauction@willowtree.com** Continue to include the numbers of the item(s) you would like to bid on and amount bid on each, please include your telephone number.
3. There is a \$5 handling charge for each successful bid. Shipping and insurance charges are additional.
4. Bidders will be notified by phone if their bid(s) are successful. This call will be made 1 - 3 days after the auction.
5. Please have all bids in by Wed., Jan. 19th. All bids (by mail, phone or **email**) after this date may not be carried out.
6. Please place bids in the following increments: \$1 to \$300 - \$5 increments \$300 up - \$25 increments.
7. **If you do not receive an item that sold for less than your bid, assume we cancelled your bid because the piece of glass had below average color, manufacture problem, damage or was not listed correctly.**
8. To receive price lists send: \$20 — for this auction and next 7 auctions
\$5 — for only this auction or individual auction (please specify)

Send to the above address. (please allow 2 - 3 weeks delivery for price lists)(**Make checks payable to: Jan Seck**)
(All auction results are available on our website for free!)

WEBSITE: <http://www.willowtree.com/~seeckauction>

- | | |
|---|--|
| ___ 1. Panelled Holly card tray shaped bon bon - green | ___ 14. Stippled Petals 3 in 1 edge dome ftd bowl - peach opal |
| ___ 2. Grape & Cable hatshape - marigold - from tumbler | ___ 15. Fenton's Peacock at Urn 9" plate - blue - very pretty & highly desirable, scarce |
| ___ 3. Grape Delight ftd rosebowl-white-feet look good | ___ 16. Birds & Cherries bon bon - marigold |
| ___ 4. Grape Delight ftd rosebowl - blue - scarce color, feet look good | ___ 17. Double Stemmed Rose dome ftd IC shaped bowl - peach opal - nice |
| ___ 5. Grape Delight ftd rosebowl - marigold - chip on foot | ___ 18. N's Eight Sided bushel basket - ice blue - scarce color & nice |
| ___ 6. Stippled Rays ruffled sauce - green | ___ 19. N's Eight Sided bushel basket - white - scarce |
| ___ 7. Holly & Berry ruffled nappy - peach opal | ___ 20. Fentonia master ftd berry bowl - marigold - hard to find bowl |
| ___ 8. Stippled Daisy ruffled bowl - purple - by Northwood | ___ 21. Estate creamer - blue opal - scarce, crack by handle |
| ___ 9. Two Seventy compote - blue moonstone | ___ 22. Estate creamer - peach opal - very nice |
| ___ 10. Cobblestone ruffled bowl - purple - fantastic example! | ___ 23. Cosmos & Cane small size rosebowl w/headress interior - marigold - very scarce rosebowl, pretty |
| ___ 11. Strawberry PCE bowl w/BW back - green | |
| ___ 12. Strawberry PCE bowl w/BW - marigold | |
| ___ 13. Vintage 10" IC shaped bowl - green | |

- ___ 24. Pony ruffled bowl - marigold
- ___ **25. Peacocks PCE bowl w/ribbed back - ice blue - extremely rare bowl & nice, has chip on edge**
- ___ **26. Peacocks PCE bowl w/ribbed back - purple - nice**
- ___ **27. Peacocks PCE bowl w/ribbed back - marigold - very pretty & scarce**
- ___ 28. Ski Star large ruffled bowl - peach opal
- ___ 29. Butterflies bon bon - green
- ___ **30. Holly 9" plate - blue - pretty plate**
- ___ **31. Holly 9" plate - marigold**
- ___ 32. Kittens cup & saucer - marigold - nice set
- ___ 33. Kittens toothpick - marigold - nice
- ___ 34. Kittens ruffled bowl - marigold - nice
- ___ 35. Kittens 2 sides up bowl - marigold - nice
- ___ 36. Kittens cereal bowl - marigold - nice
- ___ 37. Nautilus whimsey creamer - purple - chip on base
- ___ 38. Nautilus whimsey creamer - peach opal - nice
- ___ 39. Nautilus whimsey sugar bowl - peach opal - cracks in base
- ___ **40. Floral & Grape water pitcher - white - frosty & pretty, scarce color for this piece**
- ___ 41. Floral & Grape tumbler - white - a pretty one
- ___ **42. Floral & Grape 7 pc. water set - blue - super pretty set**
- ___ 43. Fenton's Acorn ruffled bowl - green
- ___ **44. Vintage fernery - red - has nice red irid, very scarce & desirable**
- ___ 45. Vintage fernery - blue - silvery
- ___ **46. Holly 3 in 1 edge bowl - light amber - unique bowl w/super irid.**
- ___ 47. Holly 3 in 1 edge deep bowl - green - nice
- ___ 48. Holly 3 in 1 edge bowl - blue
- ___ 49. Holly 3 in 1 edge bowl - marigold
- ___ **50. Grape & Cable 8 pc. small size punch set - white - frosty & fantastic, irid. is super, extremely rare & desirable!**
- ___ 51. Beaded Stars rosebowl - marigold - scarce item & nice
- ___ **52. Hearts & Flowers ruffled compote - blue - nice & scarce**
- ___ 53. Hearts & Flowers ruffled compote - marigold - scarce
- ___ 54. Hearts & Flowers ruffled compote - white - nice
- ___ **55. Butterfly & Tulip ftd deep bowl - marigold - outside of bowl is fantastic**
- ___ **56. Butterfly & Berry 7 pc. water set - marigold - nice set**
- ___ 57. Fenton's Three Fruits 12 sided 9" plate - blue - scarce color for this plate, nice
- ___ 58. Fenton's Three Fruits 12 sided 9" plate - marigold
- ___ 59. M'burg Grape Wreath Variant 8" 3 in 1 edge bowl - amethyst - radium & nice
- ___ 60. Little Flowers 3 in 1 edge 10" bowl - green
- ___ 61. Dragon & Lotus ruffled bowl - lime green opal - two points w/damage
- ___ 62. Beaded Cable rosebowl - aqua opal - chip on foot, nice
- ___ 63. Beaded Cable rosebowl - marigold - nice
- ___ 64. Beaded Cable rosebowl w/rayed interior - amethyst
- ___ 65. Three Fruits PCE bowls w/BW back (2) - green - choice
- ___ 66. Three Fruits PCE bowl w/BW back - purple
- ___ 67. Three Fruits PCE bowl w/BW back - marigold
- ___ **68. Fanciful ruffled bowl - purple - fantastic irid., Dugan at it's finest**
- ___ 69. Fanciful ruffled bowl - peach opal - scarce & pretty
- ___ **70. N's Bushel Basket - aqua opal - has butterscotch irid., one handle w/opal, one w/practically none (unique)**
- ___ **71. N's Bushel Basket - green - pretty example, scarce**
- ___ **72. N's Bushel Basket - lime green - super scarce color, nice**
- ___ 73. N's Bushel Basket - ice green - super pretty example
- ___ 74. N's Bushel basket - blue - nice
- ___ 75. N's Bushel basket - marigold - dark & nice
- ___ 76. N's Bushel basket - blue opal - not carnival
- ___ **77. Scroll Embossed round bowl - emerald green - super pretty being very hard to find color**
- ___ **78. Grape & Cable candle lamp - green - extremely rare, nice set**
- ___ 79. Fenton's Flowers ftd rosebowl - teal green - unusual rare color, has chip on foot
- ___ 80. Fenton's Flowers ftd rosebowl - marigold - dark & super, couple of minor pinpoints on toes
- ___ **81. Grape & Cable turned in centerpiece bowl - ice green - extremely rare & nice**
- ___ **82. Grape & Cable turned in centerpiece bowl - ice blue - very pretty & very rare, nice piece**
- ___ **83. Grape & Cable turned in centerpiece bowl - green - rare color for these, nice**
- ___ **84. Grape & Cable turned in centerpiece bowl - purple - super irid. on this scarce piece**
- ___ 85. Wishbone ftd ruffled bowl - purple
- ___ 86. Raindrops dome ftd ruffled bowl - purple - scarce color
- ___ 87. Grape & Cable 7" plate - marigold - scarce size
- ___ **88. Stippled Three Fruits 9" plate w/ribbed back - blue - electric & super, rare color & as pretty as they get**
- ___ **89. Stippled Three Fruits 9" plate w/ribbed back - amethyst - has wear on fruit, scarce**
- ___ **90. Stippled Three Fruits 9" plate w/ribbed back - purple - scarce**
- ___ 91. Ski Star crimped edge banana boat shaped dome ftd bowl - peach opal
- ___ 92. Three Fruits dome ftd ruffled bowl - green

- ___ 93. Bo Peep mug - marigold - nice
- ___ 94. Scroll Embossed ruffled bowl - marigold - dark
- ___ **95. Fine Cut & Roses candy dish - aqua opal - lots of opal w/super pastel irid., normal minor spots of feet, who care's on this one**
- ___ **96. Fine Cut & Roses candy dish - ice green - also very pretty, has chips on feet, scarce**
- ___ 97. Autumn Acorn IC shaped bowl - green
- ___ 98. Double Stemmed Rose dome ftd 3 in 1 edge bowl - white - frosty & pretty, neat bowl
- ___ 99. Leaf Rays nappy - marigold
- ___ **100. Stippled Grape & Cable PCE bowl w/ribbed back - aqua opal - a quality piece, opal is great, irid. is pastel & super, overall, a superb piece of carnival glass**
- ___ **101. Stippled Grape & Cable PCE bowl w/ribbed back - blue - also a fine piece, fantastic electric highlights even across the bowl, rare color**
- ___ 102. Stream of Hearts ruffled compote - marigold - nice
- ___ **103. Blackberry Banded ruffled hatshape - marigold on moonstone, very pretty, very scarce**
- ___ **104. Pearly Dots ruffled compote - blue opal - scarce piece to find in this color, nice**
- ___ **105. Pearly Dots ruffled compote - marigold on moonstone - scarce**
- ___ **106. Fenton's Peacock at Urn IC shaped bowl - blue - super pretty example w/blue highlights**
- ___ 107. Flute toothpick - purple - minor nick on point towards bottom
- ___ 108. Flute toothpick - green
- ___ 109. Flute toothpick - marigold - minor nick on bottom point
- ___ **110. Stippled Grape & Cable ruffled bowl w/ribbed back - blue - very rare bowl ruffled, not many around**
- ___ 111. Orange Tree w/trunk IC shaped bowl - marigold - nice
- ___ **112. Loganberry vase - amber - very scarce & highly desirable**
- ___ 113. Grape Leaves ruffled bowl - green
- ___ **114. Knight's Templar Dandelion mug - ice green - very rare, has pretty irid.**
- ___ **115. Dandelion mug - aqua opal - butterscotch & nice**
- ___ **116. Dandelion mug - green - pretty, has minor nick on base**
- ___ **117. Dandelion mug - purple - pretty irid. which most are not, scarce**
- ___ 118. Rustic 16" midsize vase - marigold
- ___ **119. Orange Tree 9" plate - blue - very pretty stretchy type irid., a dandy**
- ___ **120. Orange Tree 9" plate - clambroth - scarce**
- ___ **121. Acorn Burrs butterdish - purple - has some nicks inside rim of lid, pretty**
- ___ **122. Acorn Burrs butterdish - marigold - very pretty**
- ___ 123. Persian Medallion hair receiver - marigold
- ___ 124. Persian Medallion rosebowl - clambroth
- ___ **125. Stippled Peacocks 9" plate - pastel marigold - very pretty plate w/nice irid., desirable**
- ___ 126. Starfish bon bon - peach opal - pretty
- ___ **127. Grape & Cable table set - green - a pretty, matching set, hard to find together**
- ___ 128. Grape & Cable butterdish - purple - chance to fill in your set
- ___ 129. Grape & Cable butterdish - marigold - nice
- ___ 130. Cherries crimped edge 6" plate - peach opal - scarce
- ___ **131. Holly ruffled bowl - red - extremely rare & highly desirable**
- ___ 132. Holly ruffled bowl - marigold
- ___ **133. Leaf & Beads rosebowl - white - frosty & pretty, very rare color for these**
- ___ 134. Leaf & Beads rosebowl - marigold - dark & pretty
- ___ **135. N's Town Pump - purple - a very nice example, rare & desirable**
- ___ 136. Petal & Fan large ruffled bowl - peach opal
- ___ 137. Petal & Fan ruffled sauce - peach opal
- ___ **138. N's Wild Rose Open Edge bowl - blue - electric & pretty, scarce color, a dandy**
- ___ 139. Tree Trunk 10" vase - amethyst
- ___ 140. Tree Trunk 10" vase - green
- ___ **141. Hearts & Flowers ruffled bowl w/ribbed back - purple - very scarce & super pretty**
- ___ **142. Hearts & Flowers ruffled bowl w/ribbed back - ice blue - very pretty**
- ___ 143. Strawberry PCE bowl w/plain back - purple - pretty
- ___ 144. Strawberry PCE bowl w/plain back - green - pretty
- ___ 145. N's Butterfly bon bon - green
- ___ **146. Daisy & Drape flared out vase - aqua opal - butterscotch & beautiful, scarce & desirable**
- ___ **147. Grape & Cable cologne bottles (2) - marigold - nice, choice**
- ___ **148. Banded Grape & Cable hatpin holder - marigold - dark & super, large chip on flat of foot**
- ___ 149. Grape & Cable pin dish - marigold - made from punch cup
- ___ **150. 1911 Campbell & Beesley Adv. handgrip plate - amethyst - radium & super, very rare**
- ___ 151. Fine Cut & Roses rosebowl - green
- ___ 152. Fine Cut & Roses rosebowl - marigold - has open bubble on toe
- ___ **153. Dragon & Lotus 3 in 1 edge bowl - lime green opal - very scarce in this shape & color, nice**
- ___ 154. Dragon & Lotus 3 in 1 edge bowl - marigold

- ___ 155. Leaf Chain 9" plate - green - scarce plate, very pretty for these
- ___ 156. Leaf Chain 9" plate - marigold - super pretty stretchy irid. on this scarce & desired plate
- ___ 157. Star Medallion celery vase - smoke
- ___ 158. Grape & Cable 11" ruffled bowl w/BW back - blue - electric & super, a very scarce & desired bowl
- ___ 159. Grape & Cable 11" ruffled bowl w/BW back - white - also very scarce, nice
- ___ 160. Grape & Cable 11" ruffled bowl w/BW back - green - scarce & pretty
- ___ 161. Grape & Cable 11" ruffled bowl w/BW back - marigold - has yellow & pink irid.
- ___ 162. Fruits & Flowers bon bon - amethyst - pretty
- ___ 163. Leaf Chain 6 ruffled bowl - white
- ___ 164. Leaf Chain 8 ruffled bowl - amethyst - 2 small chips on base
- ___ 165. Singing Birds water pitcher - marigold - nice pitcher & scarce, has original partial sticker on base
- ___ 166. Grape & Cable 7" handgrip plate w/BW back - marigold - nice
- ___ 167. Stippled Three Fruits spt ftd ruffled bowl - aqua opal - lots of opal & very pretty, small pinpoint on one point, pastel
- ___ 168. Stippled Three Fruits spt ftd ruffled bowl - lime green opal - dark butterscotch irid. over this very rare piece, have not seen another one, are three small irid. burn spots on surface, WOW!
- ___ 169. Stippled Three Fruits spt ftd ruffled bowl - ice green - super pretty, stretchy type irid., a beauty
- ___ 170. Rose panels compote - Marigold - Foreign
- ___ 171. Fanciful 3 in 1 edge bowl - white - frosty & pretty
- ___ 172. Plaid ruffled bowl - green - rare color, desired pattern
- ___ 173. Plaid ruffled bowl - marigold - very pretty example, highly desirable
- ___ 174. Two Flowers large ftd deep ruffled bowl - marigold
- ___ 175. Persian Garden 11" ruffled bowl - peach opal - mold roughness on base, scarce
- ___ 176. Poppy Pickle dish - blue - electric & pretty
- ___ 177. Large plain car vase w/ruffled top - marigold
- ___ 178. Pulled Loop 11" vase - aqua - super, super pretty & very rare, some would call this sapphire, I only call sapphire in the Northwood line
- ___ 179. Singing Birds indiv. berry bowl - green
- ___ 180. Grape & Cable giant ruffled compote - marigold - scarce & desirable
- ___ 181. Border Plants handgrip dome ftd plate - peach opal - dark & pretty, minor chip on base
- ___ 182. Peacocks ruffled bowl w/ribbed back - aqua opal - super pretty example, has light butterscotch irid.
- ___ 183. Peacocks ruffled bowl w/ribbed back - ice green - very scarce bowl, much scarcer than the plates, nice
- ___ 184. Dragon & Lotus spt ftd ruffled bowl - smoke - scarce color & nice
- ___ 185. Leaf Chain 7" ruffled bowl - red - pretty example w/nice red irid.
- ___ 186. Chrysanthemum large ftd IC shaped bowl - blue - silvery
- ___ 187. M'burg Trout & Fly IC shaped bowl - green - satin & rare, nice bowl
- ___ 188. Persian Garden 11" IC shaped bowl - white - frosty & pretty
- ___ 189. Double Loop chalice - aqua opal - very scarce, has two large chips on base
- ___ 190. Inverted Feather cracker jar - green - scarce & desirable, pretty
- ___ 191. Grape Delight ftd nut bowl - white - pretty
- ___ 192. Apple Blossom Twigs ruffled bowl w/plain back - purple - very pretty
- ___ 193. Prayer Rug bon bon - marigold on custard - scarce item, not many sold lately
- ___ 194. Good Luck ruffled bowl w/BW back - horehound - super pretty & very rare
- ___ 195. Good Luck ruffled bowl w/BW back - marigold - scarce
- ___ 196. Dugan's Peacock at the Fountain water pitcher - blue - scarce & desirable
- ___ 197. Strawberry 7" handgrip plate - green - pretty
- ___ 198. Grape & Cable sweetmeat - purple - nick under lid
- ___ 199. Grape & Cable sweetmeat whimsey - purple - scarce
- ___ 200. Good Luck PCE bowl w/ribbed back - ice blue - extremely rare bowl, only a few known, manufacture problems in webbing, pretty
- ___ 201. Good Luck PCE bowl w/ribbed back - marigold - dark & nice
- ___ 202. Grape & Cable 7 pc. water set - green - scarce & very nice, minor chip on thumbprint of pitcher
- ___ 203. Grape & Gothic Arches butterdish - marigold - nice
- ___ 204. Blackberry Wreath ruffled hatshape - red - scarce & nice
- ___ 205. Grape & Cable 9" plate w/BW back - green
- ___ 206. M'burg Peacock master berry bowl - green - radium & super, large chip on base
- ___ 207. Zippered Heart ruffled bowl - marigold
- ___ 208. Hearts & Flowers PCE bowl w/ribbed back - blue - extremely rare bowl & highly desirable, silvery in center
- ___ 209. Vintage 9" ruffled bowl - marigold
- ___ 210. Scales ruffled bowl - blue opal - scarce color

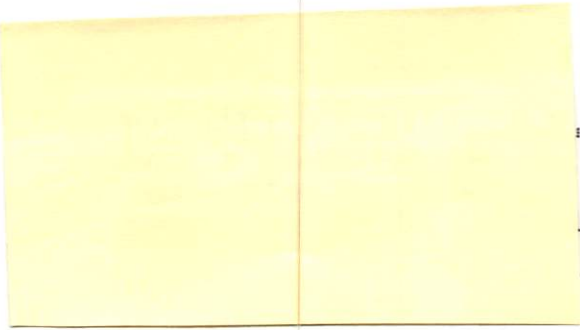
- ___ 211. Scales ruffled bowl - marigold on moonstone - pretty
- ___ **212. Grape & Cable 7" ruffled bowl w/BW back - ice blue - very pretty, not many known**
- ___ **213. Apple Tree 6 pc. water set - marigold - nice**
- ___ **214. Butterfly bon bon w/ribbed back - blue - electric & super, extremely rare**
- ___ 215. Raindrops 3 in 1 edge dome ftd bowl - peach opal
- ___ **216. Greek Key ruffled bowl - purple - super pretty irid.**
- ___ 217. 1909 Louisville, KY Shriner's champagne - clear
- ___ 218. 1911 Rochester, NY Shriner's champagne - clear
- ___ 219. 1910 New Orleans Shriner's champagne - clear
- ___ **220. Stippled Three Fruits ruffled bowl w/ribbed back - aqua opal - pastel & very rare**
- ___ 221. N's Three Fruits ruffled bowl w/plain back - green
- ___ **222. Pinecone 6" saucer shaped plate - green - pretty**
- ___ 223. Pinecone 6" plate - marigold - nice
- ___ 224. Three Fruits 9" plate w/BW back - green
- ___ 225. Three Fruits 9" plate w/BW back - marigold - extra flat
- ___ 226. Cherry Chain 6" plate - marigold - pretty
- ___ **227. Rose Show ruffled bowl - aqua opal - super pretty w/lots of opal & nice irid.**
- ___ 228. Concave Flute rosebowl - aqua - heat check in base, very rare color
- ___ **229. Stippled Three Fruits PCE bowl - marigold - extremely rare when stippled, has pumpkin type irid.**
- ___ 230. Ski Star tri-corned dome ftd bowl - peach opal - pretty
- ___ **231. Brooklyn Bridge ruffled bowl - marigold - scarce & desirable, nice**
- ___ 232. Ribbon Tie 3 in 1 edge bowl - blue - very pretty & flat
- ___ **233. Tree Trunk 12" midsize vase - purple - fine example, one of the nicer we've sold**
- ___ 234. Grape & Cable 6" handgrip plate - amethyst - pretty
- ___ **235. Grape & Cable punch cup - aqua opal - crack by handle, still very rare, need this to put with your punch bowl**
- ___ **236. Acorn Burrs punch cup - blue - if you have the punch bowl, call me!**
- ___ **237. Captive Rose 9" plate - blue - very scarce & pretty plate**
- ___ 238. N's Stippled Rays PCE bowl - purple - pretty!
- ___ 239. File & Fan round compote - marigold on moonstone
- ___ 240. Grape & Cable cracker jar - marigold - has minor nicks on rim of base & finial of lid
- ___ 241. Grape & Cable humidor - marigold - dark & pretty
- ___ 242. Grapevine Lattice tumbler - marigold
- ___ **243. M'burg Hobnail rosebowl - marigold - very nice, quite scarce**
- ___ 244. Headress large ruffled bowl - marigold - foreign
- ___ **245. Holly JIP CRE hatshape - red - cherry red color & extremely scarce, silvery irid.**
- ___ **246. Carolina Dogwood ruffled bowl - blue opal - scarce bowl**
- ___ **247. Drapery rosebowl - white - extremely rare rosebowl, highly desired, also nice**
- ___ 248. Strawberry ruffled bowl w/BW back - amethyst
- ___ 249. Wide Panel ftd giant rosebowl - marigold - never seen anything like this, kinda neat
- ___ **250. Peacocks 9" plate w/ribbed back - ice blue - super pretty irid. on this extremely rare plate**
- ___ **251. Flowering Dill JIP CRE hatshape - marigold on moonstone - cannot say I've seen this before, nice**
- ___ **252. Soutache dome ftd CRE 9" plate - peach opal - unusual plate & very pretty**
- ___ **253. Palm Beach whimsey rosebowl - amethyst - very rare shape & nice**
- ___ 254. Swan salt - ice green
- ___ 255. Swan salts (2) - celest blue - choice
- ___ **256. Stippled & Banded Grape & Cable ruffled fruit bowl - blue - electric & fantastic, unbelievable bowl, Wow!**
- ___ **257. Banded Grape & Cable ruffled fruit bowl - marigold - dark & super, fabulous pink & blue irid.**
- ___ 258. Imperial Grape water pitcher - marigold
- ___ 259. Imperial Grape tumbler - marigold
- ___ **260. M'burg Seaweed 10" 3 in 1 edge bowl - green - satin & pretty, a very nice bowl**
- ___ 261. Interior Panelled compote vase - amber
- ___ **262. Three Fruits 9" plate w/plain back - green - has blue irid., some would call this emerald, super!**
- ___ 263. Lotus & Grape ftd ruffled sauce - marigold
- ___ 264. Nippon PCE bowl w/ribbed back - ice blue - scarce
- ___ 265. Ribbon Tie CRE bowl - marigold - unusual shape
- ___ **266. Good Luck 9" plate w/BW back - green - very pretty desired plate, scarce**
- ___ **267. Fern Panels CRE square shaped hatshape - marigold on milkglass - super pretty & rare**
- ___ **268. M'burg Trout & Fly square shaped bowl - green - satin & extremely rare, light on irid. in center**
- ___ 269. Acanthus deep round bowl - smoke - pretty
- ___ 270. Acanthus deep round bowl - marigold - dark, pretty
- ___ **271. 1910 Detroit Elk's ruffled bowl - amethyst - a fantastic example, highly desirable**
- ___ 272. Vintage ruffled bowl - green
- ___ **273. Dragon & Strawberry collar based deep round bowl - marigold - super pretty irid. on this highly desired pattern**
- ___ 274. Garden Path Variant 10" ruffled bowl - peach

- opal - scarce
- ___ 275. **Orange Tree hatpin holder - marigold - pretty - feet look good**
- ___ 276. **Blossomtime ruffled compote - green - scarce color & nice**
- ___ 277. **M'burg Courthouse ruffled bowl - amethyst - radium & quite scarce**
- ___ 278. Imperial Wide Panel giant compote - marigold - has Imperial Cross Mark on base
- ___ 279. **Grape & Cable 5 pc. tankard water set - marigold - very rare & desirable, tough set to find**
- ___ 280. Sun's Up hatpin - lavender - haven't sold one for awhile
- ___ 281. **Dugan's Cherries ftd CRE bowl - purple - super pretty, very scarce, typical minor nick on foot**
- ___ 282. Springtime butterdish - purple - hard to find if you need it
- ___ 283. Stretch glass punch bowl top - celest blue - scarce item
- ___ 284. **Peacocks 9" plate w/plain back - ice green - very pretty, scarce**
- ___ 285. Stag & Holly large size IC shaped ftd bowl - marigold - lots of pink & yellow irid.
- ___ 286. Good Luck PCE bowl w/BW back - green - scarce & desirable
- ___ 287. Little Flowers round sauce - amethyst
- ___ 288. Three Fruits dome ftd ruffled bowl - lavender - very pretty irid., scarce color
- ___ 289. Leaf Chain 7" plate - marigold
- ___ 290. **N's Wild Strawberry 10" ruffled bowl - white - very few known in white, pretty, minor nick on base**
- ___ 291. Thin Rib & Drape 5 1/2" vase - marigold - nice
- ___ 292. **Fern ruffled compote - green - super pretty & scarce**
- ___ 293. Basketweave Open Edge Miller Furniture Co. adv. hatshape - marigold
- ___ 294. Heavy Grape chop plate - marigold
- ___ 295. **Peacock & Grape spt ftd ruffled bowl - lime green opal - very scarce bowl & highly desirable**
- ___ 296. Four Flowers 6" plate - peach opal - scarce & desirable, nice
- ___ 297. Two Flower ftd ruffled sauce - marigold
- ___ 298. Three Fruits ruffled bowl w/plain back - pastel marigold - super pretty irid., a beauty
- ___ 299. Grape & Cable PCE salad bowl - purple - scarce shape, seldom sold
- ___ 300. Imperial Wide Panel giant rosebowl - smoke
- ___ 301. **Grape & Cable spt ftd deep round bowl - white - extremely rare bowl, only seen a few in this color**
- ___ 302. Grape & Cable spt ftd deep round bowl - marigold
- ___ 303. Fisherman's mug - marigold - nice, scarce
- ___ 304. Grapevine Lattice 6" ruffled bowl - white - pretty
- ___ 305. **Sunken Daisies ftd small bowl (rosebowl) not turned in - purple - fabulous irid. on this very rare piece, made by Riihimaki, minor nick on one foot**
- ___ 306. Leaf Chain IC shaped bowl - white - pretty
- ___ 307. Imperial Grape round sauce - purple - super
- ___ 308. **Stippled Peacocks PCE bowl - reninger blue - super pretty & very rare, a top notch bowl**
- ___ 309. Dragon & Lotus deep ruffled collar based bowl - marigold - odd shape
- ___ 310. **Fanciful 9" plate - white - super pretty, scarce**
- ___ 311. **Basketweave Open Edge JIP shaped basket - dark amber - some would call red, very pretty**
- ___ 312. Windmill ruffled sauce - marigold
- ___ 313. Ski Star handgrip dome ftd plate - peach opal - very pretty & scarce
- ___ 314. Vintage round sauce - green
- ___ 315. **Fruits & Flowers 7" ruffled bowl - ice green - very pretty & quite scarce**
- ___ 316. Big Basketweave hldd basket - marigold
- ___ 317. **Grape & Cable shotglasses (2) - marigold - both nice, choice**
- ___ 318. Blossom & Shell 3 in 1 edge bowl - marigold
- ___ 319. Little Barrel - smoke - scarce & pretty
- ___ 320. Little Barrel - marigold - nice
- ___ 321. **Good Luck ruffled bowl w/ribbed back - sapphire - has very pretty reddish irid., extremely rare, not many around like this**
- ___ 322. **Good Luck ruffled bowl w/ribbed back - blue - electric & fabulous**
- ___ 323. Waffleblock rosebowl - clambroth
- ___ 324. Luster & Clear ruffled sauce - marigold
- ___ 325. Garland rosebowl - marigold - cracked
- ___ 326. Beauty Bud 8" vase - amethyst
- ___ 327. Smooth Rays compote - green
- ___ 328. Leaf & Beads candy dish - green
- ___ 329. Zippered Panel covered jar - marigold
- ___ 330. Vintage fernery - marigold - damaged
- ___ 331. N's Smooth Panel ruffled compote - green
- ___ 332. Wide Panel ruffled sauce - marigold, Octagon toothpick - marigold, Crackle candy dish lid - marigold - CHOICE

Seeck Auctions

P.O. Box 377
Mason City, Iowa 50402

First Class
U.S. Postage
PAID
Mason City, IA
Permit No. 448



.501

