

BURNS

AUCTION SERVICE

Carnival Glass Auction

Friday & Saturday
January 14 & 15, 2000

Friday: Preview 4:00 P.M., Auction: 6:00 P.M.
Saturday: Preview 8:00 A.M., Auction 10:00 A.M.

at the
Holiday Inn – Select
5790 University Parkway
Winston/Salem, North Carolina 27105
(336) 767-9595

(Near Corner of Highway 52 & University Parkway)

Something new for the New Year ... an auction in good ole North Carolina—ole Tobacco Road. Selling part of the collection of Mary Knight from Ontario. There is an offering of nice, clean, desirable items making for an auction just right to start the new Century.

The Holiday Inn-Select will host the event. It's located on the north side of town on Highway 52 and the corner of University Parkway. For reservations or directions, call the motel direct at (336) 767-9595.

Mail bids, e-mail bids, fax or phone bids are due by Wednesday, January 12, 2000.

CHECK OUT BURNS AUCTION SERVICE ON THE WEB!

Visit our new Web site for information on upcoming auctions, complete auction listings and photos of auction highlights.
You can e-mail your bids or requests for information.

<http://zeus.kspress.com/woodsland/burnsauction> e-mail: brnzauctsv@aol.com

BURNS AUCTION SERVICE

Tom Burns
P.O. Box 608
Bath, New York 14810
(607) 776-7942

Bill Richards
44 Water St., Poland, OH 44514
(330) 757-2001
FAX (330)-757-4917

Bill Richards, III
2253 Country Lane
Poland, OH 44514
(330) 755-2620

Mail Bids honored under the following conditions.

1. No deposit required, Bidders will take full responsibility to honor any and all bids we execute for them. Payment in full plus postage and handling required after notification and before we ship any item to them.
2. Items are bid on in perfect condition with average or above average iridescence OR as listed in the brochures. Bids will not be carried out when damage on an item has been found during the auction. **PEOPLE PRESENT AT AUCTION ARE RESPONSIBLE FOR FINDING ANY PINHEADS, WEAR, SPOTTINESS, MANUFACTURER'S DEFECTS OR ANY OTHER MINOR FLAWS, ETC.**
3. Successful bidders will be notified by collect call from the auctioneer (**so be sure to include the phone number**).
4. Phone inquiries about the glass or any other questions are welcome.
5. If you have some other person at the auction bidding for you, they must pay for the item before taking it.
6. Any terms or conditions given the day of the auction will supersede any previously published information.
7. Mail, e-mail, fax and phone bids are due by Wednesday, January 12, 2000.

- | | |
|--|--|
| _____ 1. Fenton Pastel Swan – Ice Green (sm. chip) | _____ 16. Fenton Butterfly and Fern Collar Based Tumbler – Blue (has really nice satiny irid.) |
| _____ 2. DUGAN PASTEL SWAN – P. OPAL. (OUTSTANDING EXAMPLE W/ OPAL. ON HEAD, NECK AND TOP OF WINGS) | _____ 17. Imperial Grape Tumbler – Amyth. (super irid.) |
| _____ 3. N Springtime Ind. Round Berry Bowl – Green (scarce) | _____ 18. 7-1/2" Tall x 4-3/4" Wide Imperial Beaded Bullseye Swung Vase – Dk. Mari. (really nice dark color) |
| _____ 4. 5-1/2" Imperial Embossed Scroll 8 Ruffled Ind. Berry Bowl – Purp. (super irid.) | _____ 19. Dugan Holly Whirl Tri-Cornered Handled Nappy – Purp. (nice item w/ blue highlights) |
| _____ 5. 9" Imperial Pansy 8 Ruffled Bowl – Purp. (really nice blue highlights) | _____ 20. 9-1/2" TALL DUGAN BIG BASKETWEAVE SWUNG VASE – PURP. (VERY SCARCE AND DESIRABLE; REALLY NICE IRID.) |
| _____ 6. IMPERIAL GRAPE STEMMED GOBLET – AMBER (VERY SCARCE BASE COLOR) | _____ 21. 11" TALL DUGAN SPIRALX SWUNG VASE – PURP. (SUPER, SUPER IRID.; ONE OF THE BEST) |
| _____ 7. Enameled 2 Pc. Tumble Up w/ Daisies – Mari. (a bit worn but has an unusual decoration) | _____ 22. IMPERIAL GRAPE CARAFE – PURP. (SUPER COLOR AND IRID.; NICE) |
| _____ 8. U.S. GLASS PALM BEACH "WHIMSEY" ROSE BOWL – LT. AMYTH./ GOOFUS GOLD (RARE AND DESIRABLE; NICE COLOR AND DECORATION) | _____ 23. M'burg Boutonniere Stemmed 6 Ruffled Compote – Amyth. (nice satiny example; scarce) |
| _____ 9. U.S. Glass Palm Beach 4 Ruffled "Whimsey" Bowl – Lt. Amyth. Goofus/ Gold (very scarce; just like above item) | _____ 24. Dugan Double Stem Bowl w/ 3 in 1 Edge – Amyth. (has an unusual radium finish) |
| _____ 10. M'BURG "THE GREAT HOUSE OF ISAAC BENESCH & SONS" 6 RUFFLED BOWL – AMYTH. (RARE AND DESIRABLE; AN EXCELLENT EXAMPLE) | _____ 25. N POPPY SHOW FLAT PLATE – ICE BLUE (RARE AND VERY DESIRABLE; GREAT BASE COLOR AND IRID.) |
| _____ 11. 7-1/2" M'burg Little Stars 6 Ruffled Bowl – Amyth. (very scarce; nice satiny finish) | _____ 26. N CONCAVE DIAMOND LARGE TUMBLER – VASELINE (RARE AND UNUSUAL; A TOUGHIE) |
| _____ 12. Imperial Grape Handled Flower Basket – Smoke (very scarce base color; nice) | _____ 27. 8" Fenton Coral I.C. Shaped Bowl – Green (very scarce pattern; nice color and irid.) |
| _____ 13. 5-1/2" Tall Imperial Miniature Morning Glory Swung Vase – Smoke (scarce; nice irid.) | _____ 28. N G & C Handled Pin Nappy from Punch Cup – Green (nice example) |
| _____ 14. 5" Tall Imperial Miniature Morning Glory Swung Vase – Purp. (scarce; nice color and irid.) | _____ 29. Fenton Kittens Toothpick Holder – Mari. (small flake on collar base) |
| _____ 15. 11" Tall x 7" Wide Imperial Ripple Swung Vase – Purp. (super color and irid.; nice) | _____ 30. 7-1/4" N WILD STRAWBERRY HANDGRIP PLATE W/ BASKETWEAVE EXT. – GREEN (VERY SCARCE AND DESIRABLE; NICE IRID.) |
| | _____ 31. 7-1/2" N Fruits and Flowers Handgrip Plate w/ Basketweave Ext. – Green (very scarce w/ really nice irid.) |

- _____ 32. 7-1/2" Dugan Bellflower 6 Ruffled Bowl – Purp. (has nice blue highlights)
- _____ 33. 8" Fenton Feather Stitch Deep Round Bowl – Green (very scarce pattern in a scarce color)
- _____ 34. M'burg Peacock Tail Variant Stemmed 6 Ruffled Compote – Green (a nice radium example)
- _____ 35. **M'BURG POPPY STEMMED FLARED COMPOTE – GREEN (RARE AND DESIRABLE; NICE RADIUM FINISH)**
- _____ 36. Dugan Base to Many Fruits Round Punch Bowl – Dk. Mari. (really dark item)
- _____ 37. Dugan Amaryllis Tri-Cornered Miniature Compote – Purp. (very scarce and desirable; nice satiny finish)
- _____ 38. **N INTERIOR SWIRL TUMBLER – GREEN (ACTUALLY QUITE A RARE ITEM)**
- _____ 39. **N DANDELION HANDLED MUG – AQUA OPAL. (RARE AND DESIRABLE; SUPER COLOR AND OPAL.)**
- _____ 40. **N HEART AND FLOWERS STEMMED RUFFLED COMPOTE W/ RIBBED EXT. – AQUA OPAL. (AN EXCELLENT EXAMPLE; SUPER BUTTERSCOTCH)**
- _____ 41. N Heart and Flowers Stemmed Ruffled Compote w/ Ribbed Ext. – Blue Opal. (has 2 chips on the base, but super pastel)
- _____ 42. **N HEART AND FLOWERS STEMMED RUFFLED COMPOTE W/ RIBBED EXT. – BLUE (VERY SCARCE AND DESIRABLE; NICE COLOR AND IRID.)**
- _____ 43. N Heart and Flowers Stemmed Ruffled Compote w/ Plain Ext. – White (scarce; nice frosty finish)
- _____ 44. **N HEART AND FLOWERS STEMMED RUFFLED COMPOTE W/ RIBBED EXT. – DK. MARI. (SCARCE; REALLY NICE DARK COLOR AND IRID.)**
- _____ 45. **9-1/2" M'BURG MANY STARS BOWL W/ 3 IN 1 EDGE AND 6 POINTED STAR – DK. MARI. (RARE AND VERY DESIRABLE; HAS DARK COLOR AND IRID.)**
- _____ 46. 8-1/2" M'burg Grape Wreath Variant Bowl w/ 3 in 1 Edge – Green (very scarce; has super radium irid.)
- _____ 47. **9-1/2" FENTON ORANGE TREE FLAT PLATE – BLUE (RARE AND DESIRABLE; GREAT IRID. AND STRETCH EFFECT)**
- _____ 48. 9-1/4" Fenton Orange Tree Flat Plate – Mari. (scarce; nice color and irid.)
- _____ 49. **9" FENTON PERSIAN MEDALLION FLAT PLATE – BLUE (SCARCE AND DESIRABLE; HAS A SILVERY LOOK)**
- _____ 50. 8-1/4" Fenton Feather Stitch I.C. Shaped Bowl – Aqua/ Mari. (a very rare base color for this pattern; spotty)
- _____ 51. Fenton 2 Row Open Edge 6 Ruffled Hat – Aqua. (scarce base color)
- _____ 52. Fenton 2 Row Open Edge 6 Ruffled Hat – Mari./ Vaseline (scarce base color)
- _____ 53. Fenton Flowering Dill J.I.P. Crimped Hat – Amyth. (very scarce color for this pattern)
- _____ 54. 8" Fenton Captive Rose Bowl w/ T.C.E. – Green (super irid.; very attractive)
- _____ 55. **FENTON PERSIAN MEDALLION SMALL SIZED STEMMED COMPOTE W/T.C.E. – GREEN (VERY RARE COLOR FOR THIS SCARCE ITEM)**
- _____ 56. 9" Fenton Lotus and Grape Low 8 Ruffled Bowl – Blue (actually quite an example; really nice)
- _____ 57. 7-3/4" N Fruit and Flowers 2 Sided Banana Dish w/ Basketweave Ext. – Green (very scarce; excellent irid.)
- _____ 58. 7-1/2" N Wild Strawberry Handgrip Plate w/ Basketweave Ext. – Dk. Mari. (very scarce; nice dark color and irid.)
- _____ 59. 6-1/4" N G & C Handgrip Plate w/ Basketweave Ext. – Amyth. (scarce; nice color and irid.)
- _____ 60. **9-3/4" FENTON HOLLY FLAT PLATE – BLUE (VERY SCARCE AND VERY DESIRABLE; REALLY NICE)**
- _____ 61. **N ROUND HANDLED BUSHEL BASKET – AQUA OPAL. (RARE AND DESIRABLE; NICE OPAL. AND IRID.)**
- _____ 62. **N ROUND HANDLED BUSHEL BASKET – ICE GREEN (VERY SCARCE; NICE IRID.)**
- _____ 63. **N ROUND HANDLED BUSHEL BASKET – WHITE (VERY SCARCE COLOR IN THIS SHAPE; NICE AND FROSTY)**
- _____ 64. **N ROUND HANDLED BUSHEL BASKET – SMOKEY VIOLET (UNUSUAL BASE COLOR; NICE IRID.)**
- _____ 65. N Round Handled Bushel Basket – Blue (scarce; nice color and irid.)
- _____ 66. N Round Handled Bushel Basket – Purp. (scarce; nice color and irid.)
- _____ 67. N Eight Sided Handled Bushel Basket – Dk. Mari. (nice color and irid.)
- _____ 68. N Eight Sided Handled Bushel Basket – White (nice and frosty; scarce)
- _____ 69. Imperial Plain Jane Stretch Handled Flower Basket – Smoke (scarce; nice color and irid.)
- _____ 70. **N STRAWBERRY PLATE W/ PLAIN EXTERIOR – GREEN (VERY SCARCE; REALLY NICE COLOR AND IRID.)**
- _____ 71. N Three Fruits Stippled Plate w/ Ribbed Ext. – Lt. Mari. (scarce; sorta light in color)
- _____ 72. 9" Fenton Captive Rose Flared Plate – Blue (very scarce; has nice blue and green highlights)
- _____ 73. 9-3/4" Fenton Holly Flat Plate – Dk. Mari. (scarce; nice color and irid.)
- _____ 74. N Poppy Show Flared Plate – White (very scarce; has a manuf. stone in body)
- _____ 75. **9" N THREE FRUITS STIPPLED PLATE W/ RIBBED EXT. – SAPPHIRE (RARE AND VERY DESIRABLE; SUPER COLOR AND IRID.; MAY HAVE PULLED POINT)**
- _____ 76. 10-1/4" Tall N Diamond Point Swung Vase – Green (super example; great irid.)
- _____ 77. 10-1/4" Tall Dugan Lined Lattice Swung Vase – Purp. (super example; great irid.)
- _____ 78. **10-1/4" TALL DUGAN PULLED LOOP SWUNG VASE – BLUE (VERY RARE BASE COLOR FOR THIS ITEM)**
- _____ 79. 6-1/4" Fenton Lotus and Grape Ball Ftd. Deep Round Bowl – Blue (nice color and irid.)
- _____ 80. **N FRUIT AND FLOWERS STEMMED HANDLED BON BON – AQUA OPAL. (RARE AND DESIRABLE; NICE OPAL. ON TOP)**
- _____ 81. N Fruit and Flowers Stemmed Handled Bon Bon – Green (scarce; nice color and irid.)
- _____ 82. N Fruit and Flowers Stemmed Handled Bon Bon – Blue (scarce; nice color and irid.)
- _____ 83. N Fruit and Flowers Stemmed Handled Bon Bon – Purp. (scarce; nice color and irid.)
- _____ 84. N Fruit and Flowers Stemmed Handled Bon Bon – Dk. Mari. (has really nice dark color)
- _____ 85. **10-1/2" DUGAN BIG BASKETWEAVE SWUNG VASE – BLUE (RARE BASE COLOR; DESIRABLE)**
- _____ 86. 10-1/2" Dugan Big Basketweave Swung Vase – Mari. (nice color)
- _____ 87. 7-3/4" Fenton Heart and Vine I.C. Shaped Bowl – Green (nice color and irid.)
- _____ 88. 8-3/4" N Strawberry 8 Ruffled Bowl w/ Basketweave Ext. – Green (nice color and irid.)
- _____ 89. 9" N Three Fruits Plate w/ Basketweave Ext. – Purp. (scarce; has nice irid.)
- _____ 90. **8-1/2" N G & C VARIANT STIPPLED 8 RUFFLED BOWL W/ RIBBED EXT. – GREEN (OUTSTANDING EXAMPLE; A REAL BEAUT!)**
- _____ 91. N Three Fruits Stippled Ruffled Bowl w/ Ribbed Ext. – Purp. (scarce item; nice irid.; some wear on fruit)

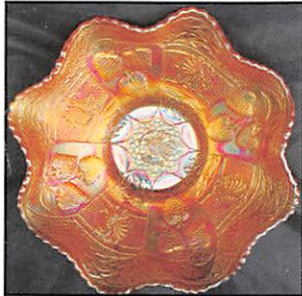
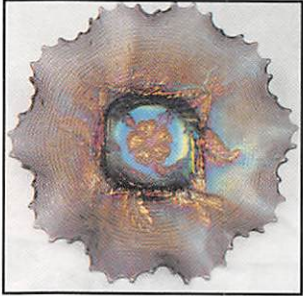
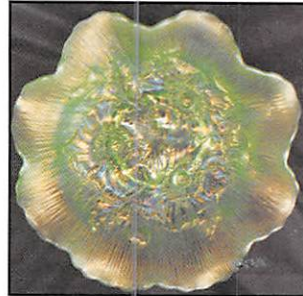
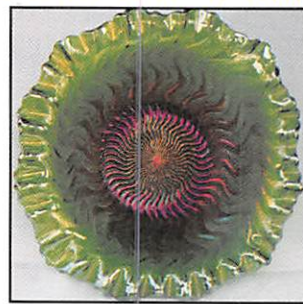
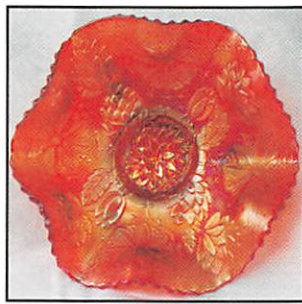
- _____ 92. N Good Luck Plate w/ Basketweave Ext. – Lt. Mari. (very scarce and desirable; light color)
- _____ 93. **9" IMPERIAL OPEN ROSE FLAT PLATE – AMBER (RARE ITEM W/ NICE BRIGHT COLOR AND IRID.)**
- _____ 94. 10-1/4" Imperial Acanthus Flared Plate – Mari. (super irid.; very attractive)
- _____ 95. **11" FENTON CHERRY CHAIN CHOP PLATE W/ O.T. EXT. – WHITE (RARE AND VERY DESIRABLE; HAS GREAT IRID.)**
- _____ 96. 10-1/2" M'burg Swirl Hobnail Swung Vase – Lt. Mari. (light in color but still very scarce)
- _____ 97. M'burg Hobnail Rose Bowl – Mari. (very scarce; nice color)
- _____ 98. M'burg Hanging Cherries Handled Spooner – Green (scarce; has slight roughness on edge)
- _____ 99. 5-3/4" M'burg Cosmos 8 Ruffled Sauce – Green (rare when ruffled; nice radium finish)
- _____ 100. **7-1/4" X 7-1/4" M'BURG STRAWBERRY WREATH 4 SIDED SQUARE BOWL – AMYTH. (RARE AND VERY DESIRABLE; SUPER RADIUM FINISH)**
- _____ 101. M'burg Strawberry Wreath 6 Ruffled Compote – Lt. Mari. (light in color w/ a radium finish)
- _____ 102. M'burg Holly Sprig Tri-Cornered Handled Nappy – Amyth. (radium and very attractive; nice)
- _____ 103. M'burg Holly Whirl (Sprig Variant) Tri-Cornered Handled Nappy – Green (satiny and scarce)
- _____ 104. M'burg Holly Sprig Handled Card Tray w/ 54th Anniv. Isaac Benesch – Mari. (scarce advertising item; nice and satiny)
- _____ 105. 5-1/2" M'burg Peacock Ind. Deep Flared Berry Bowl – Mari. (no bee, no beading w/ a radium finish)
- _____ 106. 6-3/4" M'burg Grape Wreath Variant Bowl w/ Tight Crimped Edge – Mari. (super radium finish)
- _____ 107. 8-1/4" M'burg Blackberry Wreath Round Flared Bowl – Mari. (nice satiny finish)
- _____ 108. M'burg Holly Whirl Deep Oval Handled Bon Bon – Amyth. (satiny w/ nice irid.)
- _____ 109. 6" M'burg Blackberry Wreath 6 Ruffled Ind. Berry Bowl – Green (satiny finish)
- _____ 110. 6" M'burg Blackberry Wreath Ind. Berry Bowl w/ Tight Crimped Edge – Mari. (cute item w/ a radium finish)
- _____ 111. 6" M'burg Blackberry Wreath 6 Ruffled Sauce – Amyth. (satiny finish)
- _____ 112. M'burg Diamond Tumbler – Mari. (nice color and irid.)
- _____ 113. M'burg Marilyn Tumbler – Amyth. (very scarce w/ nice multi-colored irid.)
- _____ 114. **M'BURG HANGING CHERRIES TUMBLER – GREEN (RARE AND VERY DESIRABLE; REALLY NICE)**
- _____ 115. N G & C Breakfast Handled Creamer – Green (scarce; nice irid.)
- _____ 116. N G & C Breakfast Open Sugar – Green (scarce; has a marigold overlay)
- _____ 117. Fenton Orange Tree Covered Powder Jar – Blue (scarce; nice color and irid.)
- _____ 118. 9" Fenton Orange Tree 8 Ruffled Bowl – Blue (nice color and irid.)
- _____ 119. Fenton Peacock Tail 6 Ruffled Hat – Green (nice color)
- _____ 120. Fenton 2 Row Open Edge 2 Sided Hat – Aqua/ Mari. (scarce base color)
- _____ 121. Fenton 2 Row Open Edge 2 Sided Hat – Powder Blue/ Mari. (scarce base color)
- _____ 122. Dugan Circle Scroll Tri-Cornered Hat – Purp. (scarce; average irid.)
- _____ 123. Fenton Plain Buttermilk Stemmed Goblet – Green
- _____ 124. Fenton Blackberry Spray 6 Ruffled Hat – Aqua (scarce)
- _____ 125. Fenton Blackberry Spray 4 Sided Hat – Mari./ Vaseline (scarce)

START OF SECOND SESSION

- _____ 126. Imperial Grape Stemmed Wine Glass – Mari. (nice color)
- _____ 127. Imperial Octagon Stemmed Wine Glass – Mari. (nice color)
- _____ 128. Pair Imperial Soda Gold Candlesticks – Mari. (selling as a pair)
- _____ 129. Imperial Grape Nut Bowl – Mari. (very scarce shape for this item)
- _____ 130. **N POPPY SHOW 8 RUFFLED BOWL – ICE GREEN (RARE AND VERY DESIRABLE; SUPER COLOR AND IRID.)**
- _____ 131. **N HEART AND FLOWERS 8 RUFFLED BOWL W/ RIBBED EXT. – ICE BLUE (VERY SCARCE AND DESIRABLE; NICE PINK HIGHLIGHTS)**
- _____ 132. **N HEART AND FLOWERS 8 RUFFLED BOWL W/ RIBBED EXT. – WHITE (SCARCE; NICE FROSTY COLOR AND IRID.)**
- _____ 133. N Nippon Bowl w/ P.C.E. and Plain Ext. – White (very scarce and attractive; nice item)
- _____ 134. N Acorn Burr Tumbler – Purp. (nice color and irid.)
- _____ 135. **N G & C 2 PC. CANDLE LAMP – PURP. (RARE AND DESIRABLE; PRETTY WELL MATCHED)**
- _____ 136. 10-1/2" N Leaf Columns Swung Vase – Green (desirable item w/ nice irid.)
- _____ 137. 12" Fenton Plume Panels Swung Vase – Amyth. (attractive item)
- _____ 138. **13" FENTON APRIL SHOWERS SWUNG VASE – OXBLOOD (VERY RARE BASE COLOR; WANTS TO BE RED)**
- _____ 139. 15-3/4" Fenton Rustic Mid-Size Swung Vase – Amyth. (very attractive size and irid.; nice)
- _____ 140. **19" TALL X 5-1/4" BASE FENTON RUSTIC SWUNG FUNERAL VASE – BLUE (RARE AND DESIRABLE; HAS ELEC. BLUE HIGHLIGHTS)**
- _____ 141. 11" Fenton Stag and Holly Ball Ftd. 8 Ruffled Bowl – Blue (attractive item w/ nice satiny irid.)
- _____ 142. **9-1/2" FENTON TEN MUMS BOWL W/ 3 IN 1 EDGE – GREEN (VERY SCARCE AND VERY DESIRABLE; BLUE HIGHLIGHTS)**
- _____ 143. **FENTON ORANGE TREE HANDLED LOVING CUP – GREEN (RARE AND VERY DESIRABLE; PERFECT W/ AVERAGE IRID.)**
- _____ 144. **FENTON ORANGE TREE HANDLED LOVING CUP – BLUE (VERY SCARCE AND DESIRABLE; SUPER COLOR AND IRID.)**
- _____ 145. **6" FENTON LOTUS AND POINSETTIA FTD. RUFFLED SAUCE – REVERSE AMBERINA (RARE AND VERY DESIRABLE; HAS REALLY NICE RED HIGHLIGHTS)**
- _____ 146. Dugan Fan Ftd. Gravy Boat – Purp. (very scarce; nice color and irid.)
- _____ 147. Dugan Fan Ftd. Gravy Boat – P. Opal. (scarce; attractive w/ really nice opal.)
- _____ 148. Dugan Nautilus Novelty Creamer – P. Opal. (very scarce; really nice opal.)
- _____ 149. Dugan Nautilus Novelty Open Sugar – P. Opal. (another scarce item; nice opal.)
- _____ 150. **11" DUGAN FARMYARD BOWL W/ 3 IN 1 EDGE – PURP. (VERY RARE AND VERY DESIRABLE; GOLD EDGE W/ BLUE AND RED HIGHLIGHTS)**
- _____ 151. **9" DUGAN DOUBLE STEM ROSE DOMED FLARED PLATE – PURP. (ABSOLUTELY SUPER IRID.; REALLY NICE)**
- _____ 152. 7" Dugan Fishscale Plate w/ Tight Crimped Edge – Purp. (scarce item w/ gold highlights)

- _____ 153. **8-3/4" DUGAN LATTICE AND HEARTS FLARED PLATE – PURP. (RARE AND UNDERPRICED ITEM; GREAT IRID.)**
- _____ 154. 7-1/2" Dugan Paneled Cherries Ftd. 10 Ruffled Bowl – Purp. (unusual shape; pretty nice item)
- _____ 155. **9" DUGAN DOGWOOD SPRAYS DOMED 10 RUFFLED BOWL – PURP. (SUPER, SUPER BLUE HIGHLIGHTS; A GREAT DUGAN ITEM)**
- _____ 156. **8" DUGAN FLOWERS AND FRAMES DOMED DEEP 10 RUFFLED BOWL – PURP. (VERY SCARCE SHAPE W/ REALLY NICE IRID.)**
- _____ 157. 9" Dugan Ski Star Domed Bowl w/ 3 in 1 Edge – Purp. (very scarce color for this item; nice)
- _____ 158. **10-1/2" DUGAN PODS AND POSIES (4 FLOWERS) CHOP PLATE – P. OPAL. (VERY SCARCE AND FLAT AS A PANCAKE; NICE)**
- _____ 159. 6-1/2" Dugan Pods and Posies (4 Flowers) Flat Plate – P. Opal. (very attractive; flat w/ nice opal.)
- _____ 160. **DUGAN ELKS 8 RUFFLED HANDLED NAPPY – PURP. (EXTREMELY RARE AND VERY DESIRABLE; SUPER COLOR AND IRID.)**
- _____ 161. 9-3/4" N Diamond Point Swung Vase – Purp. (excellent color and irid.; really nice)
- _____ 162. **N RASPBERRY TUMBLER – ODD AMYTH. / HOREHOUND (REALLY UNUSUAL BASE COLOR; NICE)**
- _____ 163. N Dandelion Tumbler – Purp. (super color and irid.; nice)
- _____ 164. N Oriental Poppy Tumbler – Purp. (scarce)
- _____ 165. **N PEACOCK AT THE FOUNTAIN COVERED BUTTER DISH – PURP. (RARE AND VERY DESIRABLE; PERFECT W/ NICE COLOR)**
- _____ 166. **N PEACOCK AT THE FOUNTAIN COVERED SUGAR BOWL – PURP. (VERY SCARCE; NICE COLOR AND IRID.)**
- _____ 167. N Peacock at the Fountain Handled Creamer – Purp. (another scarce item w/ nice color)
- _____ 168. N Peacock at the Fountain Spooner – Purp. (super item w/ elec. blue irid.)
- _____ 169. N Peach Spooner – White (very scarce; has roughness on cable)
- _____ 170. **N ACORN BURR COVERED BUTTER DISH – PURP. (RARE AND VERY DESIRABLE; REALLY NICE COLOR AND IRID.)**
- _____ 171. **N G & C COVERED HANDLED COOKIE JAR – PURP. (VERY SCARCE AND DESIRABLE; NICE COLOR AND IRID.)**
- _____ 172. **7-3/4" N WILD STRAWBERRY HANDGRIP PLATE – PURP. (SUPER EXAMPLE W/ RED AND BLUE HIGHLIGHTS)**
- _____ 173. 6-1/4" N Wild Strawberry Handgrip Plate – Amyth. (rare item; has sorta silvery satiny irid.)
- _____ 174. 7-1/2" N Fruit and Flowers 2 Sided Card Tray – Green (very scarce; nice color and irid.)
- _____ 175. **N ROSE SHOW 8 RUFFLED BOWL – AQUA OPAL. (RARE AND DESIRABLE; NICE PASTEL FINISH)**
- _____ 176. N Fine Cut and Roses Ftd. Rose Bowl w/ Fancy Int. – Aqua Opal. (rare and very desirable; chip on one foot)
- _____ 177. N Good Luck 8 Ruffled Bowl w/ Ribbed Ext. – Aqua Opal. (rare but has damage on edge)
- _____ 178. **N WREATH OF ROSES STIPPLED HANDLED BON BON W/ BASKETWEAVE EXT. – PURP. (VERY SCARCE ITEM; NICE COLOR AND IRID.)**
- _____ 179. 8-3/4" N G & C Variant Stippled 8 Ruffled Bowl w/ Ribbed Ext. – Dk. Mari. (super dark color and irid.; really nice)
- _____ 180. **8-1/2" DUGAN PONY 6 RUFFLED BOWL – AQUA/ MARI. (VERY RARE BASE COLOR FOR THIS PATTERN; NICE)**
- _____ 181. **9-1/4" DUGAN APPLE BLOSSOM TWIGS LOW RUFFLED BOWL/ PLATE – SMOKEY LAVENDER (SUPER DESIRABLE BASE COLOR W/ GREAT IRID.)**
- _____ 182. **9-1/2" DUGAN BLOSSOM AND SPEARS 8 RUFFLED BOWL – P. OPAL. (EXTREMELY RARE PATTERN; NICE IRID. AND OPAL.)**
- _____ 183. 9-3/4" Dugan Garden Path Variant Lg. Ice Cream Bowl – P. Opal. (very scarce and nice; has chip on one pulled point)
- _____ 184. 10-1/4" Dugan Petal and Fan Lg. I.C. Bowl w/ Jeweled Heart Ext. – Mari. (rare shape for this item in this color)
- _____ 185. **DUGAN QUESTION MARK/ GA. PEACH AND PUZZLE STEMMED PLATE – WHITE (VERY SCARCE; VERY NICE COLOR AND BRIGHT IRID.)**
- _____ 186. Dugan Dahlia Lg. Ftd. Master Berry Bowl – Amyth. (very scarce w/ nice color and irid.; attractive)
- _____ 187. Dugan Dahlia Ind. Ftd. Berry Bowl – Amyth. (scarce; matches above item)
- _____ 188. 6" Fenton Little Flowers 6 Ruffled Sauce – Aqua/ Mari. (very scarce base color w/ marigold overlay)
- _____ 189. 8-3/4" Fenton Peacock and Grape 8 Ruffled Bowl – Green (really nice irid.)
- _____ 190. **FENTON MIKADO LG. ICE CREAM SHAPED STEMMED COMPOTE – BLUE/ ELEC. BLUE (RARE AND VERY DESIRABLE; SUPER BLUE HIGHLIGHTS)**
- _____ 191. **FENTON PERSIAN MEDALLION LG. STEMMED COMPOTE W/ RUFFLED CRIMPED EDGE – GREEN (RARE BASE COLOR FOR THIS ITEM; NICE)**
- _____ 192. **9-1/4" FENTON RIBBON TIE LOW RUFFLED PLATE – PURP. (SUPER RARE BASE COLOR W/ SUPER BRIGHT IRID.)**
- _____ 193. **6-3/4" FENTON HORSEHEAD MEDALLION I.C. SHAPED BOWL – POWDER BLUE/ MARI. (VERY SCARCE ITEM IN A VERY SCARCE BASE COLOR)**
- _____ 194. Fenton Horsehead Medallion Ftd. J.I.P. Bowl – Mari. (nice color and irid.)
- _____ 195. **FENTON HORSEHEAD MEDALLION FTD. NUT BOWL – MARI./ VASELINE (VERY SCARCE BASE COLOR; ATTRACTIVE)**
- _____ 196. **8" FENTON PEACOCK AND GRAPE I.C. SHAPED BOWL – RED/ AMBERINA (RARE ITEM; VERY ATTRACTIVE; LOOKS RED)**
- _____ 197. **6-1/2" FENTON ACORN DEEP ROUND BOWL – RED/ AMBERINA (RARE ITEM; NICE BASE COLOR AND SATINY IRID.)**
- _____ 198. **FENTON BLACKBERRY 2 ROW OPEN EDGE 6 RUFFLED HAT – RED/ AMBERINA (VERY SCARCE; NICE COLOR AND IRID.)**
- _____ 199. **FENTON 2 ROW OPEN EDGE J.I.P. HAT – RED (EXCELLENT EXAMPLE; LOOKS RED)**
- _____ 200. **9-3/4" FENTON DRAGON AND STRAWBERRY 8 RUFFLED BOWL – DK. MARI. (RARE AND DESIRABLE; DARK COLOR AND VERY ATTRACTIVE)**
- _____ 201. Fenton Holly 4 Ruffled Square Hat – Red/ Amberina (unusual item; half red, half amberina)
- _____ 202. 6-1/2" Fenton Cherry Chain Flat Plate – Blue (scarce; nice satiny finish)
- _____ 203. 7-1/2" Fenton Horsehead Medallion Plate – Mari. (scarce; nice color and irid.; great detail)
- _____ 204. 7-3/4" Fenton Vintage Grape Flared Plate – Green (very scarce; nice bright satiny finish)

- _____ 205. **6-1/2" FENTON SAILBOATS FLAT PLATE – MARI. (VERY SCARCE; EXCELLENT COLOR AND DETAIL; NICE)**
- _____ 206. **9-1/4" FENTON FANTAIL FTD. I.C. SHAPED BOWL W/ BUTTERFLY AND BERRY EXT. – DK. MARI. (VERY SCARCE; BRIGHT IRID. AND NICE)**
- _____ 207. **U.S. GLASS COSMOS AND CANE PUNCH BOWL SHAPED COMPOTE – HONEY AMBER. (VERY SCARCE SHAPE; REALLY NICE COLOR AND IRID.)**
- _____ 208. Fenton Stretch Ribbed Interior Domed Fan Vase – Vaseline (scarce; very attractive)
- _____ 209. N Wide Panel Stretch Stemmed Sherbet – Vaseline (unusual; nice color and irid.)
- _____ 210. **9-1/2" M'BURG PEACOCK LG. 6 RUFFLED BOWL – AMYTH. (A NICE RADIUM EXAMPLE; NO BEE AND NO BEADING)**
- _____ 211. **9-3/4" M'BURG PEACOCK LG. FLARED MASTER BERRY BOWL – AMYTH. (ANOTHER SUPER RADIUM EXAMPLE; NO BEE AND NO BEADING)**
- _____ 212. 9-1/2" M'burg Peacock at the Urn Lg. Ice Cream Bowl – Amyth. (satiny w/ silver highlights; has bee but no beading)
- _____ 213. 10-1/4" M'burg Peacock at the Urn Lg. Bowl w/ 3 in 1 Edge – Green (light, spotty irid.)
- _____ 214. 10" M'burg Nesting Swan 6 Ruffled Bowl – Green (a really nice satiny example; great detail)
- _____ 215. **9" M'BURG FLEUR DE LEI DOMED I.C. SHAPED BOWL – MARI. (VERY SCARCE AND DESIRABLE; SUPER RADIUM AND FEET LOOK PRETTY GOOD)**
- _____ 216. 8-3/4" M'burg Blackberry Wreath 6 Ruffled Bowl – Mari. (nice radium irid.)
- _____ 217. 10-1/2" M'burg Hanging Cherries Lg. Bowl w/ 3 in 1 Edge – Mari. (super satiny example; a really scarce shape)
- _____ 218. 10-1/4" M'burg Rosiland Lg. 6 Ruffled Bowl – Mari. (very scarce; nice satiny finish)
- _____ 219. 9-1/2" M'burg Rays and Ribbons Flared Bowl – Mari. (satiny; nice irid.)
- _____ 220. **10" M'BURG STRAWBERRY WREATH LG. SQUARE BOWL W/ CRIMPED EDGE – AMYTH. (RARE AND DESIRABLE; SUPER RADIUM FINISH)**
- _____ 221. **8-1/2" M'BURG ZIG ZAG SQUARE BOWL W/ CRIMPED EDGE – GREEN (RARE AND VERY DESIRABLE; SUPER RADIUM FINISH)**
- _____ 222. **7-1/4" M'BURG HOLLY SPRIG SQUARE BOWL – MARI. (RARE AND VERY DESIRABLE; NICE RADIUM FINISH)**
- _____ 223. **M'BURG WHIRLING LEAVES TRI-CORNERED BOWL W/ CRIMPED EDGE – GREEN (RARE AND DESIRABLE; SUPER RADIUM FINISH)**
- _____ 224. **M'BURG WHIRLING LEAVES TRI-CORNERED BOWL W/ CRIMPED EDGE – MARI. (RARE AND DESIRABLE; SUPER RADIUM FINISH)**
- _____ 225. 10" M'burg Primrose 6 Ruffled Crimped Edge Bowl – Green (rare shape; nice radium finish)
- _____ 226. 9-1/4" M'burg Rays and Ribbons 6 Ruffled Crimped Edge Bowl – Green (a scarce shape for this pattern; radium)
- _____ 227. 9-3/4" M'burg Primrose 6 Ruffled Bowl – Amyth. (radium finish; nice shape)
- _____ 228. 10" M'burg Primrose 6 Ruffled Bowl – Green (satiny finish)
- _____ 229. 9" M'burg Rays and Ribbons Deep Flared Bowl – Green (nice color; radium)
- _____ 230. 5-3/4" M'burg Holly Sprig Deep Round Bowl – Green (radium and a cute shape; really nice)
- _____ 231. 7-1/2" M'burg Holly Sprig Deep Round Flared Bowl – Amyth. (radium and really nice)
- _____ 232. 8-1/2" M'burg Holly Sprig Variant Bowl w/ 3 in 1 Edge – Mari. (radium and really nice)
- _____ 233. 10-1/4" M'burg Blackberry Wreath Lg. Bowl w/ 3 in 1 Edge – Green (satiny; nice massive item)
- _____ 234. 8-3/4" M'burg Grape Wreath Variant 6 Ruffled Crimped Edge Bowl – Amyth. (radium; nice shape and color)
- _____ 235. 7" M'burg Strawberry Wreath Variant Bowl w/ 3 in 1 Edge – Amyth. (not sure of pattern – I'm tired; nice; radium)
- _____ 236. 8" M'burg Mayan I.C. Shaped Bowl – Green (radium, scarce)
- _____ 237. 9" Dugan Round Up Low Ruffled Bowl/ Plate – P. Opal. (nice satiny irid.; opal. on edge)
- _____ 238. Dugan Double Stem Roses Domed Bowl w/ 3 in 1 Edge – P. Opal. (scarce shape; nice color and opal.)
- _____ 239. N G & C Handled Bon Bon w/ Basketweave Ext. – Purp. (excellent example; almost looks blue)
- _____ 240. **N PEACOCKS PLATE W/ RIBBED EXT. – ICE BLUE (RARE AND DESIRABLE COLOR; NICE IRID.; NOT REALLY FROSTY)**
- _____ 241. **N PEACOCKS PLATE W/ RIBBED EXT. – ICE GREEN (VERY SCARCE; NICE FROSTY COLOR AND IRID.)**
- _____ 242. **N PEACOCKS PLATE W/ RIBBED EXT. – DK. MARI. (NICE DARK COLOR AND IRID.; VERY ATTRACTIVE)**
- _____ 243. N Peacocks Plate w/ Plain Ext. – Ice Green (very scarce; has the usual great irid.)
- _____ 244. N Peacocks Plate w/ Plain Ext. – White (very scarce; nice frosty color and irid.)
- _____ 245. **N PEACOCKS RUFFLED BOWL W/ RIBBED EXT. – AQUA OPAL. (RARE AND DESIRABLE; VERY ATTRACTIVE W/ PRETTY NICE IRID.)**
- _____ 246. **N DRAPERY ROSE BOWL – AQUA OPAL. (SUPER EXAMPLE; PASTEL W/ GREAT OPAL.)**
- _____ 247. N Drapery Rose Bowl – Amyth. (scarce and desirable; nice color and irid.)
- _____ 248. N Daisy and Drape Ftd. Turned in Vase – White (scarce item; nice and frosty color and irid.)
- _____ 249. **N CORN VASE W/ PLAIN BASE – DK. ICE GREEN (RARE AND DESIRABLE; VERY ATTRACTIVE ITEM)**
- _____ 250. **N GOOD LUCK RUFFLED BOWL W/ RIBBED EXT. – BLUE (VERY DESIRABLE ITEM W/ RED AND BLUE HIGHLIGHTS)**
- _____ 251. N Good Luck Ruffled Bowl w/ Ribbed Ext. – Purp. (very scarce; really nice color and irid.)
- _____ 252. Fenton Persian Medallion Rose Bowl – Blue (scarce; nice color w/ a bit of silver)
- _____ 253. Fenton Persian Medallion Hair Receiver – Blue (scarce; nice color and irid.)
- _____ 254. **N LEAF AND BEADS FTD. ROSE BOWL – ELEC. BLUE (SUPER EXAMPLE; HAS BRIGHT BLUE COLOR AND IRID.)**
- _____ 255. **N BEADED CABLE FTD. ROSE BOWL – AQUA OPAL. (RARE AND DESIRABLE; SUPER COLOR AND OPAL.; PASTEL)**
- _____ 256. **N BEADED CABLE FTD. ROSE BOWL – WHITE (VERY SCARCE; A REALLY NICE FROSTY EXAMPLE)**
- _____ 257. N Beaded Cable Ftd. Rose Bowl – Elec. Blue (super example; has a nice bright blue irid.)
- _____ 258. N Beaded Cable Ftd. Rose Bowl – Purp. (nice example; nice color and irid.)
- _____ 259. N Beaded Cable Ftd. Rose Bowl – Dk. Mari. (super color and irid.; really nice)



BURNS

AUCTION SERVICE

P.O. BOX 608 • BATH, NEW YORK 14810

Carnival Glass Auction

Friday & Saturday

January 14 & 15, 2000

Friday: Preview 4:00 P.M., Auction 6:00 P.M.

Saturday: Preview 8:00 A.M., Auction 10:00 A.M.

First Class Mail
U.S. Postage
PAID
Eugene, Oregon
Permit No. 305

