



NUMBER 9 - ANNUAL CARNIVAL GLASS AUCTION NEW YEAR FIRST MILLENNIUM EXTRAVAGANZA

Saturday, January 8, 2000 9:00 a.m.

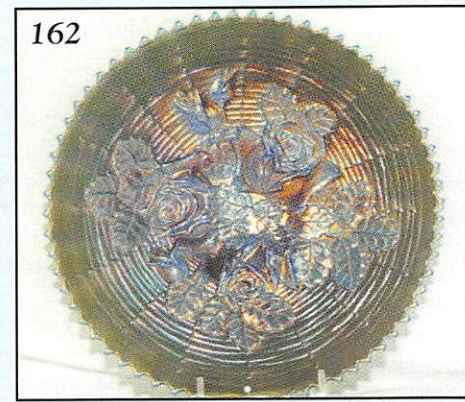
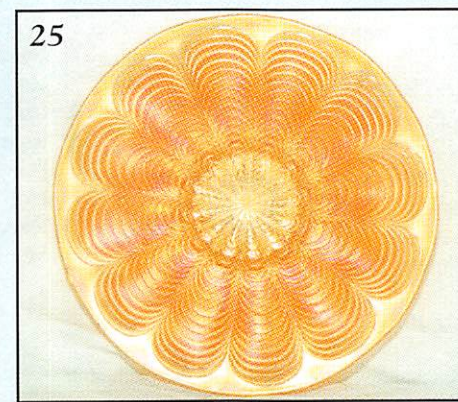
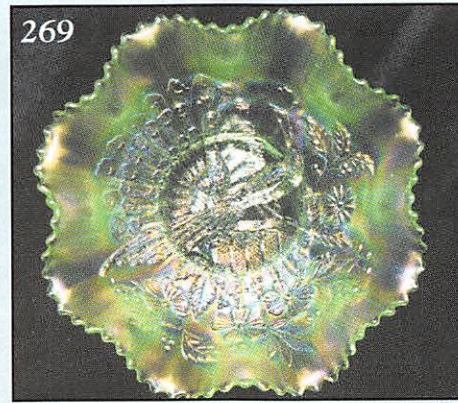
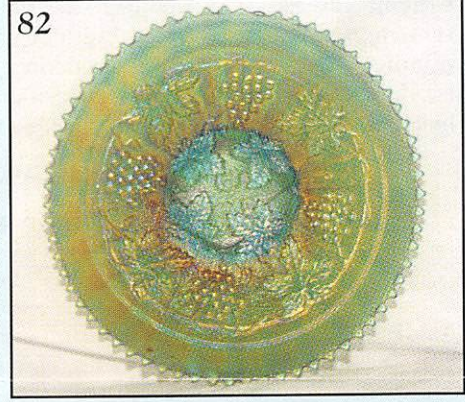
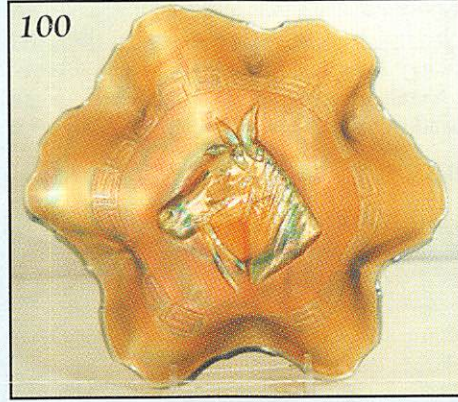
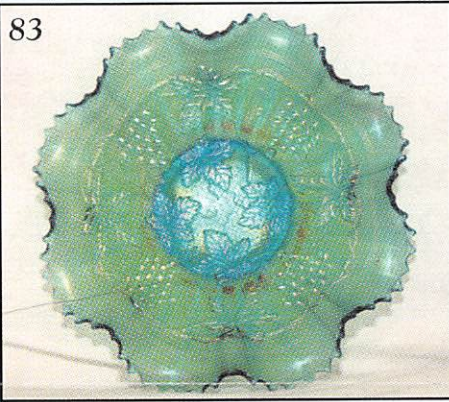
Mickey Reichel Antique & Auction L.C.

Held Inside the Mickey Reichel Auction Center

Office: 660-882-5292 • Boonville, Missouri • Home: 660-882-5283



Direct e-mail: mreichel@undata.com



NO BUYERS PREMIUM

Held Inside the Mickey Reichel Auction Center

1 Mile North of I-70 on Hwy. 5, Exit 101, Boonville, Missouri • 20 Miles West of Columbia, MO on I-70
Preview Friday 12 p.m. - 6 p.m. and 7:30 a.m. - 9:00 a.m. Day of Auction

Days Inn: 660-882-8624 • Comfort Inn: 660-882-5317 • Super 8: 660-882-2900

Auction Consists of Rarity, Great Irid. and Variety

WRITE IN BIDS: If you are unable to attend the auction, we will be happy to accept absentee bids which must be received by THURSDAY, JANUARY 6, 2000. Don't Delay.

FOR AUCTION PRICE RESULTS: Send \$3.00 and Large S.A.S.E. to 516 Third Street, Boonville, MO 65233-1536

PLEASE NOTE: There is a **\$5 handling charge for each successful bid which will be added to the selling price** for all write-in bids. This is in addition to the cost of postage, insurance and packing. Your write-in bid will be entered just as if you are present and bidding. **Successful bidders will be notified in 1 to 3 days by the auctioneer** (so be sure to include your **phone number**). Direct mail bids to Auctioneer Mickey Reichel, 516 Third Street, Boonville, MO 65233-1536. Terms: Cash or Check accepted with proper I.D. and Social Security Number and References. Announcements made day of the auction supercede all printed material. Not Responsible for Accidents or Sold Items.

No return on any items once they leave the Auction Center (No Exceptions).****

Call for additional information: 660-882-5292 days or 660-882-5283 evenings before 9:00 p.m.

FAX: 660-882-5292 (evening hours start FAX transmission after beep)

MAIL BIDS: Items are bid on in perfect condition with average or above iridescence OR as listed in the brochures. Bids will not be carried out when damage on an item has been found during the auction.

PEOPLE PRESENT AT AUCTION ARE RESPONSIBLE FOR FINDING ANY PINHEADS, WEAR, SPOTTINESS, MANUFACTURER'S DEFECTS OR ANY OTHER MINOR FLAWS, ETC.

NOTE: Read each line, as we have accentuated the type of no particular piece, all are special.

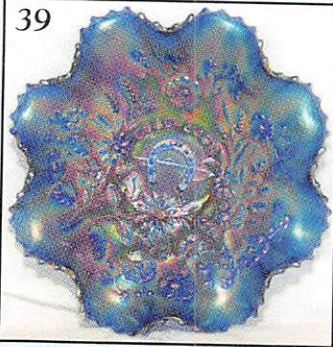
THANK YOU FOR ATTENDING TODAY ★ HAPPY NEW YEAR ★

★ ★ PEOPLE WHO BUY GLASS – HAVE CLASS ★ ★

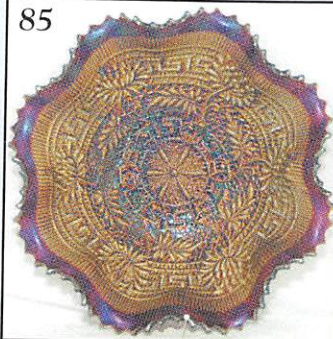
- | | |
|---|---|
| _____ 1. Lav. - Stretch 10½" Smooth Panel Vase - Super | _____ 17. Beautiful M - 8¼" Mlbg. I.C.S. Rays & Ribbons Bowl - Radium |
| _____ 2. Pastel - M-Over Milk Glass - 5" Smooth Panels Vase - Rim Roughness | _____ 18. P.M. - 9½" Mlbg. 3 in 1 Ruffled Rays & Ribbon Bowl - Radium |
| _____ 3. I.B. - Brocaded Acorns Vase - 8½" Tall - 5¼" Dia. - Beauty | _____ 19. G - 6-Ruffle Mlbg. Nesting Swan Bowl - Beautiful Satin |
| _____ 4. Amber - Logan Berry Vase - Super Irid - Base Bruise | _____ 20. Rich Satin M - Mlbg. 8½" I.C.S. Blackberry Wreath Bowl |
| _____ 5. Blue - N 6¼", 4-Pillars Vase - Rare Beauty | _____ 21. Beautiful Radium A - Mlbg. 8½" Ruffle C.R.E. Holly Sprig Bowl |
| _____ 6. B - Rib, 6-Flute, 5½" Vase | _____ 22. Radium A - I.C.S. Mlbg. Big Fish - 7½" Bowl |
| _____ 7. M - N Dandelion (Knight Templar) Rare Mug | _____ 23. Radium A - I.C.S. Mlbg. 6¼" Hanging Cherries Bowl |
| _____ 8. M - N Peacock at the Fountain Punch Cup | _____ 24. Hot M - Australian 10", 8-Ruffle Emu Bowl - Rare |
| _____ 9. Pastel M - Delvilbiss Perfume w/Dobber - 5" Tall | _____ 25. M - <u>ULTRA RARE</u> - 1 of a Kind - 10½" Peacock Tail Chop Plate - WOW! |
| _____ 10. Pastel M - Delvilbiss Perfume w/Dobber - 4" Tall | _____ 26. M - 6½" Cherry Chain Plate - Dandy One |
| _____ 11. Scarce IG - N 8-Sided Bushel Basket - Very Nice | _____ 27. G - 8¼" Collar Base N Three Fruits Bowl |
| _____ 12. Dk. M - N 7¼" Wild Strawberry Hand Grip Plate | _____ 28. <u>Fantastic A</u> - N 7¼" Wild Strawberry Hand Grip Plate - A Ten |
| _____ 13. Great W - 7" Persian Garden Plate - B.W. Ext. - Super | |
| _____ 14. Rare I.B. - N Beaded Cable Rose Bowl | |
| _____ 15. P - Dugan Holly 8-Riffle Nappy | |
| _____ 16. A - Mlbg. Hobnail Cuspidor - Scarce and Nice | |

29. A - Multi Elec. N P.C.E. Peacocks Bowl - Hot Pattern
30. Rare - Imperial Smoke Grape Water Pitcher - Beauty
31. Great Matching Smoke Imp. - Grape Tumbler
32. Rich Marigold - Logan Berry Vase
33. P - N Grape & Cable, 7 pc. Water Set - Way Above Average Set
34. Gorgeous Rare, Rare Smoke - Bluish Irid. - Persian Medallion Grape & Cable Fruit Bowl - 1st Seen
35. Reninger B - Stippled N Grape & Cable Tobacco Humidor - Rare In Any Color
36. Em. G - P.C.E. N Grape & Cable Vt. Bowl - Smooth Back - Great
37. WOW! - Em. G - 10½" N Stippled Ray Bowl - A Beauty
38. Scarce - N Three-Fruits Stippled Collar Base Bowl - Great One
39. Elec. B - N Good Luck Bowl - Rib Back - Super Example
40. Rare G - I.C.S. Peter Rabbit Bowl - Few Ever Offered - One of the Nice Ones
41. Red - Ruffled Blackberry Spray Hat - Beauty
42. Dugan Blue - 8½" Fanciful Plate - Very Scarce Color
43. M - 8½" Fanciful Plate - Pinks & Blues
44. W - 9" Fanciful Plate - Frosty Blues & Pinks
45. Multi-Radium M - 9½" Leaf Chain Plate - Blues, Pinks & Golds
46. Soft P - Round 8½" Round-Up Bowl - Gorgeous Elec. Irid.
47. Scarce Saf. - J.I.P. 2-Row Open Edge B.W. Basket
48. RARE - Deep Blue - Kittens Tooth Pick Holder or 2¼" Vase - Great Color
49. RARE - Whimsey from N Grape & Cable Punch Cup - Pin Dish - Super Ice Blue
50. B - N Stippled Rib Bk. Good Luck Plate - Flat - What A Find
51. Horehound - N B.W. Good Luck Plate - Flat - One of the Best in this Rare Color
52. Favorite A.O. - Stippled Three-Fruits Med. Spat. FTD. Bowl
53. THE BEST - P.O. Collar Base Ruffled Peacock & Grape Bowl - It's Fabulous
54. Scarce W - Flat N Hearts and Flowers Plate - Frosty - nice Hi-lites
55. Above Ave., Scarce M - Heavy Iris Tankard Pitcher
56. Pastel Powder Blue? - N Oriental Poppy Tankard - A BEAUTY
57. I.B. - N Oriental Poppy Tumbler
58. Rare Pumpkin M - Jeweled Heart Water Pitcher - Few Known
59. Scarce - Matching Jeweled Heart Tumbler
60. Great M - Tankard Wreath Cherry Pitcher - Radium Pinks
61. Matching M - Wreath Cherry Tumbler
62. Rare Lavender - Imperial Field Flowers Water Pitcher - A Beauty - Few Offered
63. Elec. - Field Flowers P-Tumbler
64. Dk. M - N Raspberry Water Pitcher
65. Dk. M - N Raspberry Tumber - Great Color
66. Violet P - Imperial Grape Water Pitcher - Elec.
67. A - Elec. Imperial Grape Tumbler
68. Beautiful W - Enameled Shasta Daisy Zig Zag Water Pitcher
69. M - Harvest Flower Tumbler - Scarce & Nice
70. Extra Pretty M - Vineyard Water Pitcher
71. Dk. M - Vineyard Tumbler
72. Dk. Rare - Rising Sun Juice Pitcher
73. Matching Rising Sun Juice Glass
74. Beautiful A - Floral and Grape Pitcher - Lots of Irid.
75. Great Blue Matching - Ten Mums 7 pc. Tankard Water Set
76. 8" Top - P - Elephant Foot - Plunger Base 5¼", Tree Trunk Vase, 13½" Tall - What A Hunk
77. P - 18" N Plunger Base 5¼" Tree Trunk Funeral Vase
78. M - Pastel Peacocks Lamp - Rare, Beautiful Find
79. G - 8-Ruffle Fenton Holly Bowl - Scarce Color
80. A - Elec. Radium Imperial Pansey Bowl
81. G - P.C.E. Stippled N Strawberry Bowl - Rare B.W. Ext. - Very Limited Find
82. Sapphire - N Stippled Grape & Cable Plate - Beauty and Very Hard to Come By
83. Sapphire - N Stippled Grape & Cable Bowl - Beauty
84. Great G - Captive Rose 9" Plate - Seldom Offered
85. P - Ruffled N Embroidered Mums Bowl - Very Nice
86. Scarce - N Blue Ruffled Hearts and Flowers Bowl - Rare Find in this Color
87. Gorgeous I.B. - N Hearts and Flowers Bowl
88. Rare Pastel Stretch Lav. - N P.C.E. Grape & Cable Vt. Bowl - A Beauty
89. Marigold Over Custard - Prayer Rug Bon Bon - Very Neat Rarity
90. M - N Ivy Town Pump - Rare Color
91. P - N Ivy Town Pump - Collector's Prize
92. P - N Multi Elec. Raspberry Ruffle B.W. Compote
93. M - 10", 8-Ruffle, Ball Ftd. Stag & Holly Bowl - Blue Highlights
94. B - Butterfly & Berry Hat Pin Holder - Rare Find
95. PM - N Grape & Cable Hat Pin Holder
96. Scarce A - Ruffled Concord Bowl
97. P - Super Elec. Imp. Grape Decanter w/4 match wines
98. P - 9" Tri-corner CRE Dugan Dogwood Sprays Bowl - Fantastic Irid.
99. B - 7", 6-Ruffle Lions Bowl w/Red Streaks when held to light
100. Rare Aqua - 6-Ruffle Fenton Pony Bowl - Few Known - Beautiful
101. W - Fenton 6-Ruffle Peacock & Urn Bowl
102. First Seen W - 8" Rd., 3-Row O.E. Basketweave Bowl - Frosty Multi Irid.
103. W - 10" N ICS Peacock at Urn Master Bowl - Beautiful Blue Highlights
104. W - Clear - Pastel 8½" PCE N Strawberry Bowl - Smooth Ext. - Rare Beauty
105. Lime Vas. - 6", 6-Ruffle Ftd. Two Flowers Bowl
106. G - N 9½" PCE Wishbone Bowl - Basketweave Ext. - Scarce Color

39



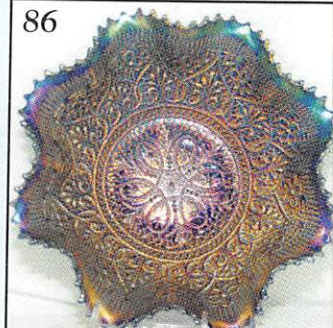
85



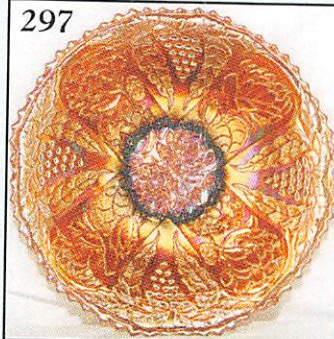
291



86



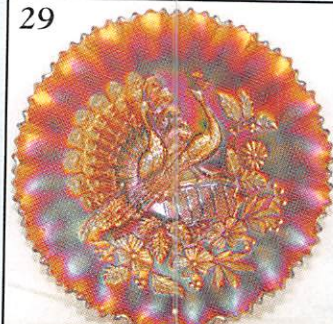
297



28



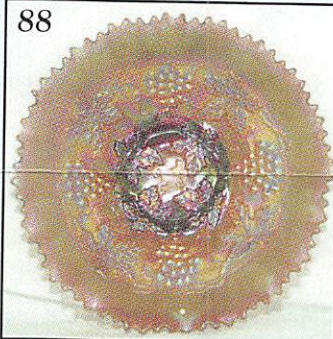
29



257



88



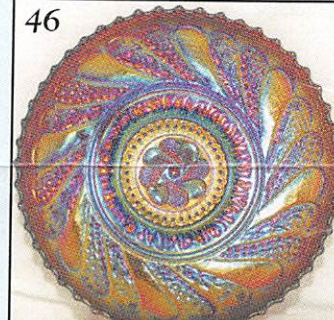
261



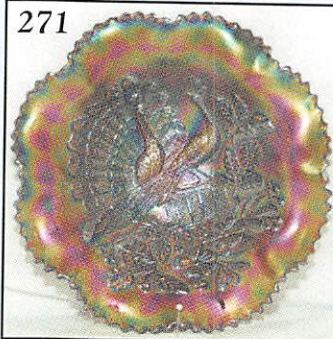
268



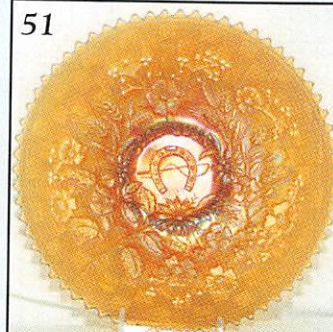
46



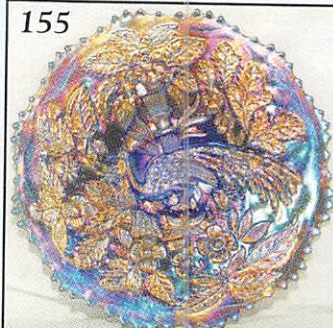
271



51



155



300



34



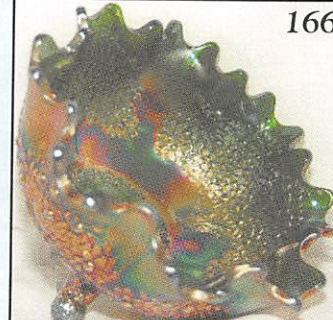
114



265



166



107. Lav. - Radium 6-Ruffle, 6" Sailboats Bowl
108. **A - 6" Fenton Garden Mums Plate w/Gold Script Adv. - Very Unusual - Flat and Pretty**
109. B - N Ruffled Embroidered Mums - Multi Elec.
110. **Lav. - Radium Collar Base 3 in 1 Edge Dragon & Lotus Bowl**
111. Pumpkin M - 6½" Fenton Peacock Tail Plate - Super Little Rarity
112. **Brass - Metal - Ruffled Peacocks Bowl - What An Item**
113. Rare 9½" M - Concord Plate - Scarce Color
114. **P - Mlbg. Giant Hobstar & Feather Rose Bowl - Fantastic Example**
115. G - N Mid-Size Tree Trunk Funeral Vase - Elec. Highlights
116. **P - Elec. N Three-Fruits Plain-Back PCE Bowl**
117. Dk. M - N Peacock at Fountain Punch Bowl & Base
118. **A - 6¼" N Grape & Cable Saucer**
119. RARE Red - 6" Primrose & Fishnet Vase
120. **B - Sweden 5½" SVEA Geometric Plate - Talk About Rare**
121. M - Stippled Grape & Cable Tobacco Humidor
122. **M - Grape & Cable Cracker Jar**
123. A - 12¾" Flat Persian Garden Chop Plate - Fantastic Irid. - Flake Off Bk. Point
124. **IG - Enameled Floral Zig Zag Pitcher**
125. M - Grape & Cable Stippled Banana Bowl - Great Color
126. **A - Grape & Cable Pin Dish Whimsey from Punch Cup**
127. P - Sgn. Diamond D Wreath Cherries Butter dish w/Lid - Rarity
128. **A - Mlbg. Hanging Cherries Butter Dish w/Lid - Small Chip Back of Base**
129. Super W - N Peacocks, RB, Ruffled Bowl
130. **B - Persian Med. Grape & Cable Ftd. Fruit Bowl - Great Color**
131. M - Pastel Panels Water Pitcher (? on Pattern)
132. **A - Inverted Strawberry Tumbler - Tiny Rim Nick**
133. Hard to Find P - Fashion Tumbler
134. **A - Mlbg. Marilyn Tumbler - Very Scarce**
135. P - Beautiful Grape & Cable Cologne Bottle w/Stopper
136. **M - Golden Harvest Decanter w/Stopper**
137. G - Butterfly & Plume Tumbler - Super Color
138. **Celeste Blue - Concave Diamonds Tumble-Up Set - Complete - Great Find**
139. Celeste Blue - Concave Diamonds - Tankard w/Lid
140. **Olive G - Concave Diamonds 6" Vase - Very Rare**
141. G - Inverted Feather Cracker Jar w/Lid - Cambridge Rarity
142. **G - O.E. JIP Hat - Very Rare Color**
143. Super PM - Ruffled N Strawberry Bowl - Great Blues & Yellows
144. **P.M. - Good Luck Ruffled RB Bowl - Fantastic Pastel Irid.**
145. M - Horse Med. Plate - Rich Pinks & Golds - 1 of the Better Examples
146. **M - 6", 6-Sided Field Thistle Plate - Rare Cutie**
147. G - N Strawberry Plate - BW - Beautiful Greens, Yellows, Pinks Irid.
148. **Pumpkin M - N Poppy Show Bowl - Dark & Wonderful**
149. B - N Peacocks RB Plate - Super Multi Elec. Example
150. **P - Radium Multi Elec. Imp. Ruffled Cobblestone Bowl**
151. P - N PCE Nippon Scarce RB Bowl - Multi Elec.
152. **P - Grape & Cable Covered Compote - Multi Elec. Example**
153. G - N Rose Show Ruffled Bowl - Rare & Beautiful
154. **Ultra Rare Emerald G - N Butterfly Threaded Back Bon Bon - Super**
155. B - Multi Elec. Radium Fenton Peacock & Urn Plate - Fantastic
156. **Vas. Stretch - I.G. Ftd. Cupped Rose Bowl - Fenton 603**
157. Rare Pastel I.G. - 10", 8-Ruffle Fruits & Flowers Bowl - Beautiful Irid.
158. **G - 9¼" Leaf Chain Plate - Scarce Color - Above Avg. Irid.**
159. RARE G - Imp. 6-Sided Candlesticks - Seldom Offered
160. **Beautiful Frosty W - Three-Fruits Med. Spt. Ftd. Bowl**
161. IB - Ruffled Poppy Show Bowl - Pink Highlights on this Rarity
162. **Renniger Blue - 9" Rose Show Vt. Plate - Very Rare Color**
163. 1 of 3 Known W - N Peacocks Plate w/BW Ext. - Gorgeous Multi-Irid.
164. **M - 11¼" Imp. Heavy Grape Chop Plate**
- 165A. M - Shade w/Enamel Decor - Double Gooseneck Brass Student Lamp - WOW!
- 165B. White - Ceiling Fixture Brass w/5 Signed N-Art Shades - Super Neat
166. **Ultra Rare G - Lg. Orange Tree Ftd. Fruit Bowl - Few Known - Outstanding Color**
167. PO - 9" Collar Base Dugan Cherries & Jeweled Heart Bowl
168. **G - N Grape & Cable Hat Pin Holder - Near Em. - A Beauty**
169. Outstanding B - ICS 10½" Ftd. Stay & Holly Bowl
170. **Great B - Rose Show Plate - Normal Rose Nicks - Beautiful**
171. M - Imp. 474 Pattern - 8 pc. Punch Set - Well Matched
172. **Red - Contemp. Quilt Diamond Miniature GWTW Lamp - Neat**
173. A - 7¾" Twigs Beauty Vase - Beautiful Example
174. **W - 10¼" Lined Lattice Vase - Pinks & Blues**
175. B - 8" Rare Lattice & Points Vase - Possible 1 of 3
176. **M - Imp. 9" Parlor Panels Vase - Beautiful Example**
177. Amber - 11" Imp. Ripple Vase - Purple Highlights
178. **P - Raspberry Milk Pitcher - Little Toughy**
179. RARE Ultra Violet - Imp. Windmill Water Pitcher - Fantastic Find - Rare Blue Violet
180. **Dark M - Well Matched 7 pc. Fashion Water Set**
181. P - Elec. Diamond Sunburst Wine Glass
182. **M - 474 Pattern Wine Glasses - Choice A or B**

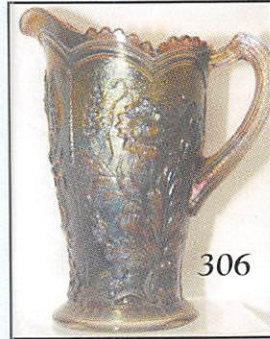
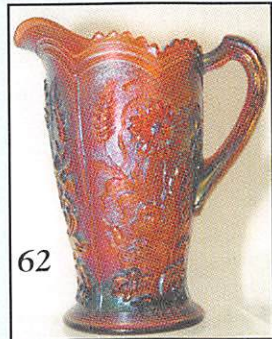
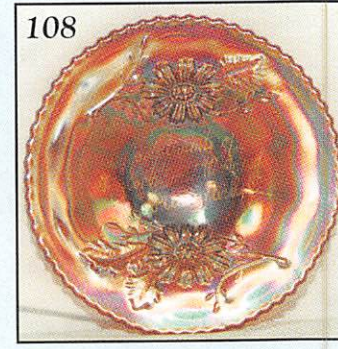
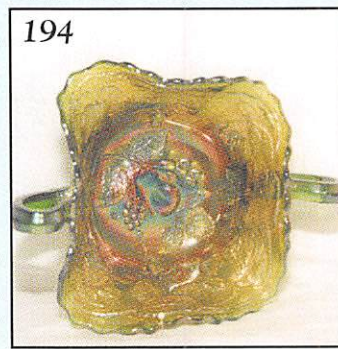
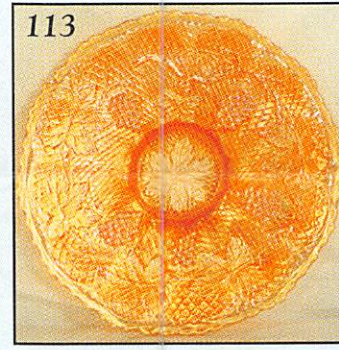
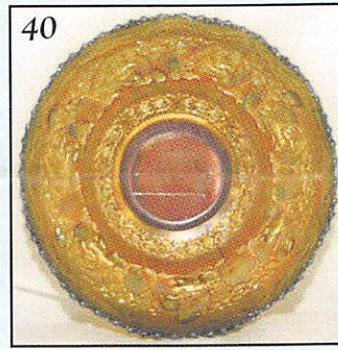
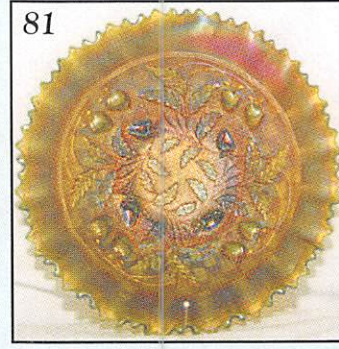
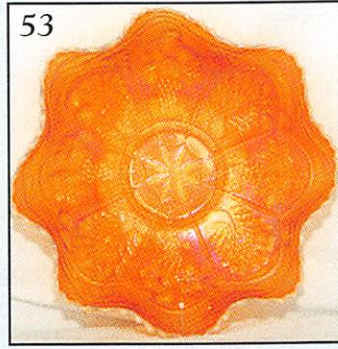
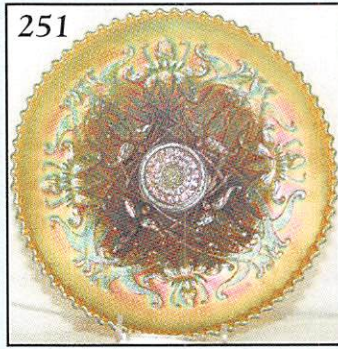
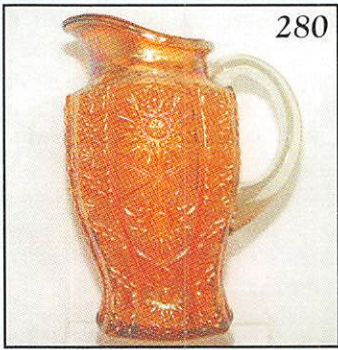
- _____ 183. M - 3" Tall Atomizer - Pattern Glass
- _____ 184. **M - 3" Tall Atomizer - Pattern Glass**
- _____ 185. Clear Irid Top - 6 1/4" Tall Vase w/Pastel Blue Satin Base w/2 Doves - Novelty
- _____ 186. **M - Flashed - Heart Band Mug - Cambridge**
- _____ 187. M - Ribbed Int. Punch Cup
- _____ 188. **M - Fenton No. 736 Elite Compote - Edwards Bk. 6 - Page 115**
- _____ 189. P - N Peacock at Fountain Ftd. Fruit Bowl - Beautiful Elec. Highlights
- _____ 190. **M - Mitered Diamonds & Pleats 4" Rose Bowl - May Be 1 of a Kind**
- _____ 191. Vas. - Two Flowers Ftd. Ruffled Bowl - 5" Bowl
- _____ 192. **M - Imp. Flute Punch Bowl, Base, 4 Cups**
- _____ 193. G - 8" ICS Mayan Bowl - Rim Chip
- _____ 194. **RARE G - Mlbg. Roses & Fruits Compote - Beautiful**
- _____ 195. G - 6-Ruffle Mlbg. Nesting Swan Bowl - Beauty
- _____ 196. **B - N Greek Key Bowl w/Mary & John Patched Place**

RARE AUSTRALIAN ITEMS 197 THRU 226

- _____ 197. BA - 9 1/2", 12-Ruffle Kingfisher Bowl - w/Wattle Leaves
- _____ 198. **M - 9 1/2", 12-Ruffle Kingfisher Bowl - w/Wattle Leaves**
- _____ 199. BA - 10" Gum Tip Vase - 6" Top
- _____ 200. **BA - 9" Gum Tip Vase - 4 1/2" Top**
- _____ 201. M - 9 1/2", 12-Ruffle Kookaburra Bowl
- _____ 202. **BA - 9 1/4", 12-Ruffle Kingfisher w/Wattle Blossom**
- _____ 203. M - 9 1/2", 12-Ruffle Kingfisher w/Wattle Blossom
- _____ 204. **M - 9 1/2", 16-Ruffle Swan w/Registration No. Bowl**
- _____ 205. BA - 9 1/2", 16-Ruffle Swan w/Registration No. Bowl
- _____ 206. BA - 9 3/4", 16-Ruffle Kangaroo w/Branch
- _____ 207. M - 9 3/4", 16-Ruffle Kangaroo w/Registration No. & No Branch
- _____ 208. **M - 9 3/4", 8-Ruffle Magpie Bowl**
- _____ 209. M - 5 1/2", 8-Ruffle Emu Bowl
- _____ 210. **BA - 5 1/2", 8-Ruffle Emu Bowl**
- _____ 211. M - 5 1/2", 12-Ruffle Swan Bowl
- _____ 212. **BA - 5 1/2", 12-Ruffle Swan Bowl**
- _____ 213. M - 5 1/4", 12-Ruffle Kingfisher Bowl w/Wattle Leaves
- _____ 214. **BA - 5 1/4", 12-Ruffle Kingfisher Bowl w/Wattle Leaves**
- _____ 215. BA - 5 1/4", 12-Ruffle Kangaroo w/Branch Bowl
- _____ 216. **M - 5 1/2", 8-Ruffle Magpie Bowl**
- _____ 217. MM - 5 3/4", 12-Ruffle Scales Bowl
- _____ 218. **BA - 5 3/4", 12-Ruffle Scales Bowl**
- _____ 219. M - 5 1/2", 12-Ruffle Kookaburra Bowl
- _____ 220. **BA - 5 1/2", 12-Ruffle Kookaburra Bowl**
- _____ 221. Pink, Non Irid. - 5 1/2", 12-Ruffle Kangaroo w/Branch Bowl
- _____ 222. **M - 5 1/2", 12-Ruffle Kangaroo w/Branch Bowl**
- _____ 223. BA - 5 1/2", 12-Ruffle Kangaroo w/Branch Bowl
- _____ 224. **M - 5 1/2", 12-Ruffle Kookaburra Bowl**
- _____ 225. M - 5 1/2", 12-Ruffle Shrike Bowl
- _____ 226. **BA - 5 1/2", 12-Ruffle Shrike Bowl - Choice A or B**


- _____ 227. B.O. - Irid. Estate Cream & Sugar - Rare Mini Set
- _____ 228. **M - Octagon 4 pc. Table Set**
- _____ 229. P - N Grape & Cable Whiskey Decanter
- _____ 230. **A - Paneled Dandelion Tankard - Great Example**
- _____ 231. A - Mlbg. 6" Peacock Plate - Top Notch Example
- _____ 232. **M - Pr. Inverted Strawberry Candlesticks - Nice - Rarity**
- _____ 233. P - N Grape & Cable Sweetmeat - Beautiful Example
- _____ 234. **B - 16 1/4" Swung Diamond Point Columns Vase - A Beauty**
- _____ 235. G - Mlbg. Hobstar & Feather Giant Rose Bowl - Fantastic Color
- _____ 236. **M - 6-Bottle Toiletry Set in Brass Caddy - Complete - What a Find!!**
- _____ 237. P - Imp. Diamond Lace Water Pitcher - Fantastic Irid.
- _____ 238. **Amber - Imp. Loganberry Vase - Hot Item**
- _____ 239. Smoke - Imp. Grape Decanter w/Stopper - Rare Color
- _____ 240. **P - Stretch Spittoon - 5" Dia. - Great - Never Seen Another**
- _____ 241. M - 9 1/2" Mlbg. Ohio Star Vase - Beautiful Blues & Yellows
- _____ 242. **Lav. - N Grape & Cable Powder Dish w/Lid - Nick on Lid - Still Rare Pastel**
- _____ 243. M - Blown 10 1/2" Pitcher w/Applied Rose
- _____ 244. **G - Sunflower Pin Tray - Minor Nicks on Reverse Side**
- _____ 245. IB - N Acorn Burr Punch Cups - Choice A or B - Great Color
- _____ 246. **PM - Daisy Web - 6-Ruffle Hat**
- _____ 247. B - Orange Tree, 4 1/4" CRE Crimped Whimsey Sauce - Really Neat
- _____ 248. **BA - Diamond Points Basket Whimsey w/2 Sides Pulled Down - No Irid.**
- _____ 249. P - Imp. Flute Water Pitcher - Very Rare
- _____ 250. **P - Grape & Cable Powder Jar w/Lid - Chips on Lid**
- _____ 251. G - N Wishbone Ftd. Plate - Beautiful Rarity - Few Known 7 or 8
- _____ 252. **Super Rare Lav. - Fruits & Flowers Stemmed Bon Bon - Outstanding Color**
- _____ 253. Elec. B - Stippled - Fruits & Flowers Stemmed Bon Bon - Outstanding Irid.
- _____ 254. **Amberina - Fenton Stippled Rays - 6-Ruffle - 6" Bowl - Scale Band Ext.**
- _____ 255. Sapphire - N Stippled Three-Fruits Plate - Rare - Minor Fruit Wear
- _____ 256. **PM - N Stippled Three-Fruits Plate - Outstanding Yellows, Pinks, Blues**
- _____ 257. Lav. - Stippled N Three-Fruits Plate w/RB - Dandy
- _____ 258. **Em. G - N Ruffled Strawberry Bowl - Smooth Back - Super Example**
- _____ 259. A - N Strawberry 9" Plate - BW Ext. - Thick Rich Irid.
- _____ 260. **W - Fenton Peacock at Urn Plate - Rich Blues, Pinks, Yellows**
- _____ 261. Super A - Fenton Holly Plate - Multi Irid. - Real Beauty - Scarce Color
- _____ 262. **M - 9" Spector's Dept. Store Adv. Plate - Outstanding Example**

- _____ 263. Persian Blue - ICS 7 1/4" Lotus & Grape Bowl - Very Under-Valued Rarity
- _____ 264. Vas. Opal - Collar Base, 3 in 1 Edge Dragon & Lotus Bowl
- _____ 265. Outstanding Purple - Multi Elec. PCE Peacocks Bowl - Wow Wee!
- _____ 266. Gorgeous Pastel B.O.? - Ruffle Peacocks Bowl - Fantastic Item - Pastel A.O.
- _____ 267. RARE Pastel IB - N Peacocks RB Plate - Frosty Blues, Pinks, Yellows - Top of Line Beauty
- _____ 268. RARE Smoke - N PCE Peacocks Bowl - Super Soft Pastel - Seen Any
- _____ 269. Super IG - N Ruffle Peacocks Bowl - Blues, Yellows, Pinks - Rare Bird
- _____ 270. PM - N Ruffle Stippled Peacocks Bowl - Great Pink & Blue Highlights
- _____ 271. A - Ruffled N Stippled Peacocks Bowl - Super Irid. - How many have you seen?
- _____ 272. Pumpkin M - N Peacocks Plate - RB - A Beauty
- _____ 273. Dk. IG - Stretchy Peacocks RB Plate - Great Example
- _____ 274. Rich Amber - Rare Fenton Strawberry Bon Bon - No Wear
- _____ 275. Scarce A.O. - N Rose Show Bowl - Lots of Opal - Opal Tips on Roses, Blues, Pink, Gold
- _____ 276. G - 10" Ribbon-Edge Square Mlbg. Nesting Swan Bowl - Rare Radium Shape
- _____ 277. M - Zipper Stitch Decanter w/5 Cordial, w/Underplate - Beautiful Set and Rare
- _____ 278. M - Star & Fan Decanter w/5 Cordial, w/Underplate - Beautiful Set and Rare
- _____ 279. M - Rising Sun Stemmed Water Pitcher - Great Find
- _____ 280. M - Imp. Pattern Water Pitcher - 1 of 2 Known - Thistlewood Bk. Page 206
- _____ 281. M - 474 Wine Glass
- _____ 282. M - Rib & Band Scales - 3 1/2" Tall Tumbler - Few Known
- _____ 283. M - Plume Panels & Bows Rare Gorgeous Tumbler
- _____ 284. M - Dark Super Radium RARE 6" KULOR VASE - Stunning Rarity
- _____ 285. M - Dark Super Radium RARE 8" DAGNY VASE - Thistlewoods Bk. Page 174
- _____ 286. G - Collar Base Peacock & Grape Ruffle Bowl - Unbelievable Irid.
- _____ 287. Pastel IB - Ruffled Embroidered Mums Bowl - Smooth Back Variety
- _____ 288. Rev. Amberina - Ruffled Blackberry Spray Hat
- _____ 289. Lighter Green - PCE, RB, Good Luck Bowl - Beautiful Irid. - Glows in Black Light
- _____ 290. Dk. M - 7 1/2" Vintage Flat Plate - Fenton - Super Pumpkinish
- _____ 291. B - Embroidered Mums Ruffled Bowl - Rib Ext. - Elec. Blue Highlights
- _____ 292. Pumpkin M - 9 1/2" Radium Fenton Holly Plate - A Show Stopper
- _____ 293. A - 9 1/2" Fenton Holly Plate - Thick Rich Pinks, Blues, Gold Satin
- _____ 294. G - Collar Base - N Three-Fruits Stippled RB Bowl - Beautiful Example
- _____ 295. Horehound - N Three-Fruits Plate - 9" - BW Ext.
- _____ 296. Lav. - N RB Stippled Three-Fruits Plate - Its a Beauty
- _____ 297. A - 9" Lotus & Grape Plate - A Beauty Seldom Offered - Very Scarce Color
- _____ 298. Super Pastel M - Ruffled Poppy Show Bowl - Looks Like Clambroth to me!??
- _____ 299. Rare Vas. Opal - 6", 6-Ruffle Waterlily Bowl - Little Dandy
- _____ 300. Rev. Amberina Opal - 6", 6-Ruffle Waterlily Bowl - Can't Describe the Beauty & Rarity
- _____ 301. Fantastic PM - Ruffled Rose Show Vt. Bowl - Super Blues & Pinks
- _____ 302. Rich IG - Ruffled Rose Show Bowl - Pastel Blue Highlights - Great
- _____ 303. Rich IG - 9 1/2" N Peacock & Urn Ice Cream Bowl - Pastel Blue & Yellow Irid - WOW!
- _____ 304. Smoke - Radium Imp. Low Ruffle 9 1/4" Pansy Plate
- _____ 305. AO - Rd. N Bushel Basket - Lots of Opal
- _____ 306. Outstanding Smoke - Imp. Field Flowers Water Pitcher - Beautiful Irid - Few Known
- _____ 307. P - Imp. Ultra Rare, OUTSTANDING Elec., CHATELAINE Water Pitcher
- _____ 308. P - Chatelaine Tumblers - Choice A, B, C, D, E, F
- _____ 309. P - N Grape & Cable Butter Dish w/Lid - Old Favorite
- _____ 310. A - N Grape & Cable Vt. Punch Bowl & Base w/5 Cups
- _____ 311. P - N Grape & Cable Tobacco Humidor - Rare Find - Minor Lid Roughness
- _____ 312. P - N Grape & Cable Thumbprint Lg. Berry Bowl w/4 Sauce Dishes
- _____ 313. M - Imp. Ruffled Windmill Relish Dish - Radium
- _____ 314. P - Imp. Diamond Lace Water Pitcher - Elec. Irid.
- _____ 315. G - 9 1/2" Sq. Mlbg. Rays & Ribbons Bowl - Rare Shape
- _____ 316. M - Peacock at Fountain Ftd. Fruit Bowl - Dk. w/Pinks & Blues
- _____ 317. Scarce M - Pretty Fishermans Mug
- _____ 318. Rev. Amberina - 2-Sides Up, 2-Row OE Basket
- _____ 319. Beautiful Yellowish Vas. - 7" Ruffle Peacock & Dahlia Bowl - Glows Wild
- _____ 320. M - 7" Imp. 3 in 1 Pattern Plate - Super Pink Irid.
- _____ 321. P - N Ruffled Strawberry Bowl - Multi Elec.
- _____ 322. PM - Circle Scroll J.I.P. Whimsey from Tumbler - Beautiful Pinks & Yellows
- _____ 323. M - Twins Pattern Fruit Bowl Base Only
- _____ 324. M - Whirling Star Punch Bowl Top Only
- _____ 325. M - 7 1/2", 8-Ruffle Daisy & Lattice Points Bowl
- _____ 326. P - 11 1/4" Dugan Target Vase - Base Nick - Still Outstanding Color
- _____ 327. M - Orange Tree Hat Pin Holder - Normal Roughness - Color Top to Bottom
- _____ 328. B - N Cherries Tumbler - Pretty
- _____ 329. B - Enameled Forget Me Not Banded Tumbler - Very Pretty
- _____ 330. M - Fenton Waterlily & Cattail Tumbler - Dark Example
- _____ 331. M - N Waterlily & Cattail Tumbler - Scarce
- _____ 332. G - 7" Fenton Vintage Plate



- _____ 333. Red Amberina - 2-Sides Up, 2-Row OE Basket
 _____ 334. **Great M - N Grape & Cable Candle Lamp - Complete - Hot Item**
 _____ 335. Vas. - Concave Diamonds Tumbler - Rare Color
 _____ 336. **B - Pretty Fentonia Tumbler**
 _____ 337. G - Lg. Persian Medallion Crimped Edge Compote - Rare Color & Size
 _____ 338. **G - N Grape & Cable Candlestick**
 _____ 339. G - Inverted Strawberry Powder Jar w/Lid - Beautiful Example
 _____ 340. **BA - Basket Flower Hat Pin**
 _____ 341. BA - Diamond Trail Hat Pin
 _____ 342. **BA - Elegance Vt. Hat Pin**
 _____ 343. BA - Faceted Spiral Dance Hat Pin
 _____ 344. **Aqua - Ruffled Fenton Thistle Bowl - Rare Color**
 _____ 345. M - Poppy Show Plate - Dark & Nice
 _____ 346. **Horehound - Good Luck Ruffled BW Bowl - Very Rare**
 _____ 347. BO - N Bushel Basket - Not Carnival
 _____ 348. **BO - Rose Show Ruffle Bowl - Not Carnival**
 _____ 349. M - Flat Rose Show Plate - Minor Rose Nick - Dk. & Pretty
 _____ 350. **A - N Wishbone Ftd. Plate - Flat w/Great Color**
 _____ 351. A - Mlbg. 5/4" I.C.S. Blackberry Wreath Sauce - Super Example
 _____ 352. **A - 5/2" Mlbg. Rd. Grape Wreath Vt. Bowl w/12 Scallops - Super**
 _____ 353. P - Chatelaine Tumbler - Super w/Minor Flea Bite on Rim
 _____ 354. **A - 6-Ruffle Scarce Pony Bowl**
 _____ 355. B - Orange Tree Loving Cup - Fantastic Multi Elec. Color
 _____ 356. **P - Sm. N Tornado Vase - Super Color - Minor Flea Bite**
 _____ 357. W - Cherry Wreath Banana Bowl w/Painted Cherries - Rough Flutes
 _____ 358. **PM - Rare RB Good Luck Plate - Blues, Yellows, Pinks**
 _____ 359. Beautiful PM -PCE Good Luck Bowl
 _____ 360. **P - 8/2" N Ruffled Stippled Grape & Cable Vt. Bowl - Elec.**
 _____ 361. G - PCE N Stippled Grape & Cable Vt. Bowl - Scarce Color & Shape
 _____ 362. **M - Dahlia 4-Place Table Set - Great Find - Very Pretty & Scarce**
 _____ 363. P - Dahlia Master Bowl - 3 Small Berry Dishes - Rare & Nice
 _____ 364. **P - Imp. Flute Master Bowl & 3 Small Bowls - Super Elec.**
 _____ 365. PM - Embroidered Mums Ruffled Bowl - Soft Pinks & Golds on this Scarce Item
 _____ 366. **AO - Pastel 5 pt. Ftd. Three-Fruits Med. Ruffled Bowl - Beauty**
 _____ 367. Soft B - 11", 8-Ruffle Sq. Ftd. Stag & Holly Bowl - Blues & Yellows
 _____ 368. **P - N Peacock at Fountain Ftd. Fruit Bowl - Multi Elec. Beauty**
 _____ 369. Red - JIP 2-Row OE Hat Shape Bowl
 _____ 370. **Lime I.G. - Dome Base Ruffled Three-Fruits Med. Bowl - Rare Color**
 _____ 371. Lime Green - Stemmed Fruits & Flowers Bon Bon - Also Rare
 _____ 372. **W - 9/2" Orange Tree Plate - Lot of Blue Highlights - Great One**
 _____ 373. B - Fenton Holly Plate - Elec. Blues & Purples
 _____ 374. **Rare M - Radium Fishermans Mug**
 _____ 375. Rich Iridized M 8/4" Ruffled Concord Bowl - Hot Pattern
 _____ 376. **MMG - 8/2" Westmoreland Daisy Wreath Ruffled Bowl - Outstanding Example**
 _____ 377. P - N 7/4" Grape & Cable Hand Grip Plate
 _____ 378. **P - Dugan S-Repeat Punch Bowl Base Only - Rare Pattern**
 _____ 379. Vas. - 6-Ruffle, 6/2" Holly Bowl - Marigold Overlay
 _____ 380. **M - 8/2", 10-Ruffle Ftd. Dugan Cherries Bowl - Inside & Out - Scarce**
 _____ 381. M - N Flute Sugar Bowl & Lid
 _____ 382. **A - Beautiful Ruffled Iris Compote**
 _____ 383. M - Persian Med. Hair Receiver - Light Color
 _____ 384. **G - Ruffled Crescent Rose Compote**
 _____ 385. M - Dk. Radium Imp. Propeller Compote

 **THANK YOU FOR
ATTENDING THE AUCTION**

FREE  **Special Note:**
**H.O.A.C.G.A. Club will offer a
 Hospitality Room Friday Evening,
 January 7, 2000, at the Days Inn,
 Boonville, Missouri, 6:30 p.m.**

For Free Color Catalogs & Information Write:
Mickey Reichel
516 Third Street, Boonville, MO 65233-1536
or Call: 660-882-5292 days or
660-882-5283 evenings before 9:00 p.m.

**CALL TODAY TO SELL
 YOUR GLASS FOR
 YEAR 2000
 1 PC. OR 1000+ PCS.**



MICKEY REICHEL
ANTIQUE & AUCTION, L.C.
516 THIRD STREET
BOONVILLE, MO 65233-1536

BOONVILLE MO 65233
AM
07 DEC
/999



FIRST CLASS MAIL



SPECIAL INVITATION TO:



"EXCITEMENT BUILDS AS THE CROWD GAT

