

CARNIVAL GLASS AUCTION

Saturday, November 13, 1999 9:00 a.m.



Mickey Reichel Antique & Auction L.C.



Held Inside the Mickey Reichel Auction Center
Boonville, Missouri

Office: 660-882-5292 • Home: 660-882-5283

Direct e-mail: mreichel@undata.com



163



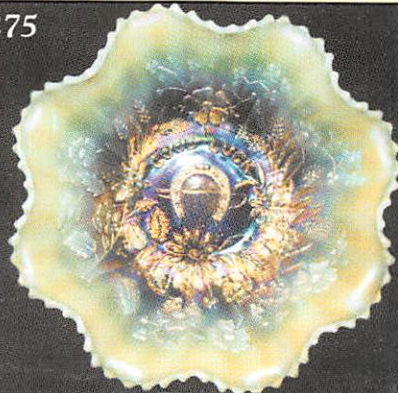
298



302



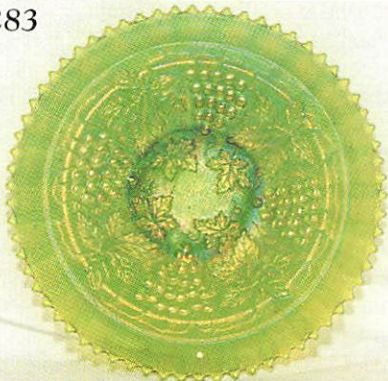
275



190



283



293



7



NO BUYERS PREMIUM

Held Inside the Mickey Reichel Auction Center

1 Mile North of I-70 on Hwy. 5, Exit 101, Boonville, Missouri • 20 Miles West of Columbia, MO on I-70
Preview Friday 12 p.m. - 6 p.m. and 7:30 a.m. - 9:00 a.m. Day of Auction

Make Reservations **EARLY** at one of these local motels:

Days Inn: 660-882-8624 • Comfort Inn: 660-882-5317 • Super 8: 660-882-2900

Auction Consists of Rarity, Great Irid. and Variety

WRITE IN BIDS: If you are unable to attend the auction, we will be happy to accept absentee bids which must be received by THURSDAY, NOVEMBER 11, 1999. Don't Delay.

FOR AUCTION PRICE RESULTS: Send \$3.00 and Large S.A.S.E. to 516 Third Street, Boonville, MO 65233-1536

PLEASE NOTE: There is a **\$5 handling charge for each successful bid which will be added to the selling price** for all write-in bids. This is in addition to the cost of postage, insurance and packing. Your write-in bid will be entered just as if you are present and bidding. **Successful bidders will be notified in 1 to 3 days by the auctioneer (so be sure to include your phone number).** Direct mail bids to Auctioneer Mickey Reichel, 516 Third Street, Boonville, MO 65233-1536. Terms: Cash or Check accepted with proper I.D. and Social Security Number and References. Announcements made day of the auction supercede all printed material. Not Responsible for Accidents or Sold Items.

No return on any items once they leave the Auction Center (No Exceptions).****

Call for additional information: 660-882-5292 days or 660-882-5283 evenings.

FAX: 660-882-5292 (evening hours start FAX transmission after beep)

MAIL BIDS: Items are bid on in perfect condition with average or above iridescence OR as listed in the brochures. Bids will not be carried out when damage on an item has been found during the auction.

PEOPLE PRESENT AT AUCTION ARE RESPONSIBLE FOR FINDING ANY PINHEADS, WEAR, SPOTTINESS, MANUFACTURER'S DEFECTS OR ANY OTHER MINOR FLAWS, ETC.

NOTE: Read each line, as we have accentuated the type of no particular piece, all are special.

THANK YOU FOR ATTENDING TODAY

- | | | | |
|-------|---|-------|--|
| _____ | 1. M - 10 1/2" Fenton Fine Rib Vase | _____ | 19. M - <u>N</u> Grape & Cable Hat Pin Holder - Very Pretty |
| _____ | 2. M - 9 1/2" JIP Morning Glory Vase | _____ | 20. P - <u>N</u> 8 3/4" Tree Trunk Vase - Very Pretty |
| _____ | 3. P - <u>N</u> 5 1/4" Squatty Vase - 3 3/8" Base - 5 1/4" Top | _____ | 21. P - 6 1/4" Squatty <u>N</u> Vase - 3 1/2" Base - 5" Top |
| _____ | 4. A - 11 1/4" Dia. & Rib Vase - A or B | _____ | 22. B - 6 1/8" Fenton Dia. Bows Vase - Scarce Little Guy |
| _____ | 5. A - 10 1/4" April Showers Vase | _____ | 23. Lav. A - <u>N</u> 9 1/4" Dia. Point Vase |
| _____ | 6. P - 6" <u>N</u> Tornado Vase - Great Example | _____ | 24. M - Waterlily & Cattails 3" Squatty Whimsey Vase - Dark Example |
| _____ | 7. M - Ultra Rare Mary Ann Loving Cup w/3 hdl. | _____ | 25. B - Butterfly & Berry Spooner |
| _____ | 8. G - <u>N</u> Graceful Compote | _____ | 26. M - Ruffled Pansy 5 1/4" Berry Bowl |
| _____ | 9. M - 7" Stipple Rays Plate | _____ | 27. B - Mini Blackberry Compote - Nice Example |
| _____ | 10. M - Dugan Ftd. 8" Cherries Bowl - Int. & Ext. | _____ | 28. M - Fenton Ruffled Little Holly Compote |
| _____ | 11. G - <u>N</u> Beads Ruffled Bowl | _____ | 29. Lime - Fenton Small Rib Compote - M. Overlay |
| _____ | 12. G - <u>N</u> Beaded Cable Rose Bowl - Rayed Int. | _____ | 30. A - Fenton Smooth Ray Ruffled Compote |
| _____ | 13. A - Fenton Peacock Tail Hdl. Compote | _____ | 31. A - Blackberry Bramble Ruffled Compote - Base Nick |
| _____ | 14. A - Imp. Ruffle Pansy Bowl - Radium Finish | _____ | 32. B - 7 1/2" Rd. Fenton Autumn Acorns Bowl |
| _____ | 15. G - <u>N</u> Fine Cut & Roses Ftd. Candy Dish - Super Pretty | _____ | 33. M - 17" Morning Glory Funeral Vase - Chip on Rib |
| _____ | 16. P - <u>N</u> Grape & Cable Hat Pin Holder - Above Average | _____ | 34. B. Opal - Ruffled Peacocks Bowl - Non Irid. |
| _____ | 17. P - <u>N</u> Grape & Cable Powder Jar w/lid - Base Chip | _____ | 35. G - <u>N</u> Fine Cut & Roses Rose Bowl - Good Feet |
| _____ | 18. P - <u>N</u> Grape & Cable Sweet Meat w/lid - Great Example | _____ | 36. A - <u>N</u> Fine Cut & Roses Rose Bowl - Good Feet |
| | | _____ | 37. P - <u>N</u> Poinsettia & Lattice Ftd. Bowl - Super Elec. - Tip Chipped Off |
| | | _____ | 38. M - Ruffled, Clear Stem, Columbia Compote |

- _____ 39. Lav. A - N Peacocks Plate - Rib Back - Great Find
- _____ 40. A - N 9" Three Fruits Plate - BW Ext.
- _____ 41. G - N 9" Three Fruits Plate - BW Ext. - Beauty - 3 Sharp Points
- _____ 42. P - 9" N Strawberry Plate - BW Ext. - Beautiful Example
- _____ 43. G - 9" N Strawberry Plate - BW Ext. - Beautiful Radium Irid.
- _____ 44. M - 9½" N Flat Strawberry Plate - BW Ext - Super Yellow & Greens
- _____ 45. G - N Ruffled Strawberry Smooth Back Bowl - Super
- _____ 46. M - N Ruffled Strawberry Smooth Back Bowl - Super Pinks
- _____ 47. A - 7", 6-Ruffle Fenton Vintage Bowl
- _____ 48. Great B - 8½", 6-Ruffle Captive Rose Bowl
- _____ 49. Extra Nice B - 8½" Fenton Autumn Acorns Bowl
- _____ 50. A - 10½", 6-Ruffle Little Flowers Bowl - Beautiful Pinks & Blues
- _____ 51. Outstanding A - 10" Ruffled Feathered Serpent Bowl
- _____ 52. M - 6¼" Ruffled Rococo Bowl
- _____ 53. M - 5" Radium Propeller Compote - A or B
- _____ 54. M - Flashed - Devilbiss Perfume w/Dauber - A or B
- _____ 55. M - Flashed - Devilbiss Automizer Perfume
- _____ 56. M - Flashed - Paneled Tall DeVilbiss Automizer - No Squeeze Ball
- _____ 57. Great Satin Mlbg. A - Peacock Tail Vt. Compote
- _____ 58. Great Satin Mlbg. G - Peacock Tail Vt. Compote
- _____ 59. Radium Mlbg. Ruffled G - Boutonniere Compote
- _____ 60. M - 9¾" Mlbg. 3 in 1, Dome Base, Fleur de Lis Bowl - Light Satin
- _____ 61. G - 8" ICS Mlbg. Mayan Bowl - Radium
- _____ 62. M - Mlbg. 7" Rd. Cherries Bowl - Soft Satin
- _____ 63. G - Mlbg. Spade Shape Holly Sprig Nappy - Super Radium
- _____ 64. Great Radium A - Mlbg. 9½" Ruffled Whirling Leaves Bowl
- _____ 65. Super Satin A - Mlbg. 9½" Ruffled Whirling Leaves Bowl
- _____ 66. Satin G - Mlbg. 9½" Ruffled Whirling Leaves Bowl
- _____ 67. Radium G - Mlbg. Nesting Swan Bowl
- _____ 68. Rare Radium M - Mlbg. Ruffled Strawberry Compote - Pinks & Blues
- _____ 69. G - Mlbg. Sunflower Pin Tray
- _____ 70. PO - 9" CRE Sq. Dugan Smooth Ray Caroline Ext. Bowl - Rare Shape
- _____ 71. PO - 7¼" Super Dugan Stippled Petal Bowl - Tri-Cornered
- _____ 72. PO - Outstanding Ftd. 8¼" Plain Int. Cherries Ext. Bowl - Opal Feet
- _____ 73. PO - 9" CRE, Rd., Smooth Ray Int., Caroline Ext. Bowl
- _____ 74. PO - Super 9¾", 10-Ruffle Flowers & Frames Bowl
- _____ 75. PO - Great 9¼", 10-Ruffle Double Stem Roses Bowl
- _____ 76. PO - Rare Shape, 8¼", 3 in 1 Crimp, Ski Star & Compass Bowl
- _____ 77. PO Scarce Size, 6", 8-Ruffle Ski Star & Compass Bowl
- _____ 78. PO - Neat Shape, 5¾", 7-Ruffle, Leaf Rays Nappy - Dandy
- _____ 79. PO - 7¼" Dugan Stippled Petal Bowl - Tri-Cornered
- _____ 80. PO - CRE 6¾" Ftd., Plain Int., Dugan Cherrie: Bowl - Neat Shape
- _____ 81. PO - Ruffled Dugan Coin Spot Compote - Sharp Point on Rim
- _____ 82. PO - 9½" Collar Base, 6-Ruffle, Dugan Cherries Int. & Ext. Bowl
- _____ 83. PO - Dugan Tri-Cornered Holly Berry Nappy - 2" of Opal
- _____ 84. PO - 8" CRE, Rayed Int., Single Flower Ext. Plate??
- _____ 85. PO - 9" Unusual Dugan, 3 in 1 Crimp, Single Flower Bowl - Lots of Opal
- _____ 86. PO - 8¼" CRE, Tri-Corner, Smooth Ray Int., Caroline Ext. Bowl
- _____ 87. G - 10½" Tri-Cornered, CRE, Fenton Stippled Rays Bowl
- _____ 88. Red - Robert Hansen Turkey Toothpick Holder
- _____ 89. P - 11" Imp. Beaded Bullseye Vase - Radium Elec.
- _____ 90. P - 10½" Dugan Heavy Grape Bowl - Farmyard Shape - Rare
- _____ 91. M- Scarce 4¾" Amaryllis Compote - 3 Sides Pulled Up - Great Find
- _____ 92. M - 7¾" Ruffled Hdl. May Pattern Basket - Quite Scarce
- _____ 93. M - Sgn. Near-Cut, Rare Inv. Strawberry Covered Sugar Bowl
- _____ 94. P - N Blossom Time Compote - A Beauty - One Point Chipped
- _____ 95. M - N Grape & Cable Hat Pin Holder - Minor Ft. Chip
- _____ 96. P - Grape & Cable Banded Cologne Bottle & Stopper - Rare in Banded Var.
- _____ 97. G - N Ftd. Wild Rose Nut Bowl - Pretty Example
- _____ 98. Frosty W - N Grape & Cable Rose Bowl - Bubble Inside Ft., Manufacturer
- _____ 99. Scarce G - N 8-Sided Bushel Basket
- _____ 100. Ultra Rare - Fenton 9¼", A, Wild Blackberry Plate - 1 of a Kind
- _____ 101. P - Ruffled N Strawberry Bowl w/BW Ext.
- _____ 102. Helios G - Imp. Grape Punch Bowl w/Base & 7 Cups
- _____ 103. Elec. P - Imp. Grape Punch Bowl w/Base - No Cups - Bowl Base Ground
- _____ 104. M - Rare Hobstar & Cathedral Punch Bowl Complete - 1 of 2 Known
- _____ 105. M - Rare Hobstar & Cathedral Punch Bowl Complete - 2 of 2 Known
- _____ 106. P - Dugan Many Fruits Beautiful Punch Bowl & Base
- _____ 107. Rare Mlbg. Vas. - Hobstar & Feather Punch Bowl Base - You got the top??
- _____ 108. M - Lg. Imp. Fashion Punch Bowl w/Base & 6 Cups - Extra Nice
- _____ 109. M - Broken Arches Punch Bowl w/Base & 8 Cups

122



123



120



118



124



117



109



110



111



104



115



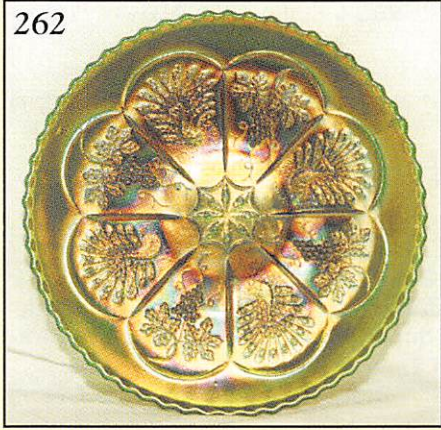
106



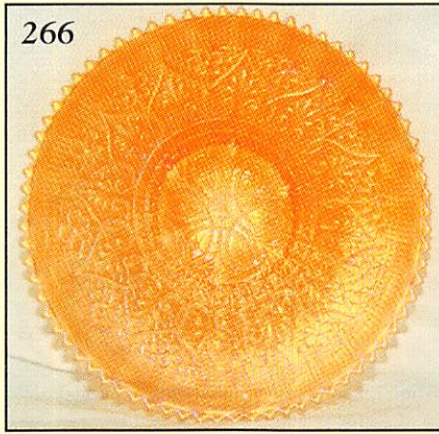
- _____ 110. **Ultra Rare G - Mlbg. Multi Fruits Punch Bowl w/base & 5 Cups - Bowl Chipped - Few Known Complete**
- _____ 111. M - 474 Pattern Punch Bowl - w/Base & 6 Cups
- _____ 112. **Rare P - Imp. Octagon Water Pitcher - Above Average Color**
- _____ 113. M - Mlbg. Feather & Heart Water Pitcher - Beautiful Example
- _____ 114. M - Mlbg. Feather & Heart Tumbler - A, B or C
- _____ 115. **Radium Elec. B - Fantastic Fenton Apple Tree Water Pitcher**
- _____ 116. B - Fenton Apple Tree Tumbler - A, B, C, D or E
- _____ 117. B - Paneled Dandelion 7 pc. Tankard Water Set
- _____ 118. G - Paneled Dandelion 7 pc. Tankard Water Set
- _____ 119. M - Paneled Dandelion Pitcher
- _____ 120. Fantastic P - Dia. Lace 7 pc. Water Set
- _____ 121. M - Dugan Lattice & Daisy 7 pc Tankard Water Set - Well Matched
- _____ 122. **P - Mlbg. Marilyn 7 pc. Water Set - Very Rare Find**
- _____ 123. **Equally as Rare M - Fantastic Dugan Dahlia 7 pc. Water Set**
- _____ 124. One of the Best M - Imp. Fashion 7 pc Water Set
- _____ 125. M - N Raspberry Milk Pitcher
- _____ 126. **M - N Wide Panel Epergne - Complete**
- _____ 127. Amber - Western Thistle Water Pitcher - Very Rare - Base Chip
- _____ 128. PM - 10", 3 in 1, Mlbg. Rays & Ribbons Bowl - Radium
- _____ 129. A - Mlbg. 9½" Ruffled, Whirling Leaves Bowl - Radium
- _____ 130. **Pumpkin M - Ftd. Fenton Persian Med. - Grape & Cable Fruit Bowl**
- _____ 131. **Super Pretty W - Dugan Fanciful Plate - Blues, Pinks, Yellows**
- _____ 132. Scarce W - 8¾" Ruffled Fenton Orange Tree Bowl - Frosty
- _____ 133. A - Butterfly & Fern Tumbler - Beauty - Small Nick on Base
- _____ 134. B - Dugan Peacock at Fountain Tumbler - Elec. - Small Base Nick
- _____ 135. **Multi Pastel M - Hearts & Flowers Compote**
- _____ 136. M - N Beaded Cable Rose Bowl w/Rayed Int. - Above Average
- _____ 137. Extra Nice G - N Daisy & Plume Ftd. Rose Bowl - Stippled Ray Int.
- _____ 138. M - Collar Base, Sq. 8-Ruffle Chrysanthemum Bowl
- _____ 139. **Radium M - Fenton 6¼", 2-Sides Up, Scarce Northern Star Card Tray Plate**
- _____ 140. A - Fenton 9" Three-Fruits Plate - Above Average Quality
- _____ 141. **M - N PCE, BW, Good Luck Vt. Bowl - Scarce**
- _____ 142. **M - N PCE, BW, Good Luck Bowl - Dark & Nice**
- _____ 143. M - Yellows & Pinks, Ruffled, Rib Back, N Good Luck Bowl
- _____ 144. P - Ruffled RB N Good Luck Bowl - Multi Irid
- _____ 145. **Teal - 9⅝" JIP Corinth Vase**
- _____ 146. Teal - 10" Tall Corinth Vase - Pretty Radium
- _____ 147. PM - 5¼" Fenton JIP Vase - Ext. Rib
- _____ 148. **Dk. Radium M - 8¼" Imp. Beaded Bullseye Vase - 5¼" Top**
- _____ 149. Elec. P - 7½" Imp. Beaded Bullseye Vase - 6" Top
- _____ 150. Limeish G - 11" Imp. Mid Size Ripple Vase - 3⅞" Base - 6¼" Top
- _____ 151. P - 11" Elec. Imp. Ripple Vase - 4¼" Top
- _____ 152. P - 8" Imp. Ripple Vase - 3⅞" Base - 4⅝" Top - Elec.
- _____ 153. **M - 4½" Ripple Vase - 2½" Base - 3¼" Top - Rare Size and Pretty**
- _____ 154. M - 8¼" Swirled JIP Morning Glory Vase
- _____ 155. **G - 4¼" Morning Glory Vase - 2¼" Base - 2¼" Flared Top**
- _____ 156. M - 7½" Imp. Flute Vase - 3⅞" Base - 5½" Top
- _____ 157. Deep P - 9" Beautiful Lined Lattice Vase
- _____ 158. P - N 10¼" Beautiful Fine Rib Lily Top Vase
- _____ 159. **Radium Multi Elec. P - 10¼" N Dia. Points Vase**
- _____ 160. Olive Like G - N 11¼" Tree Trunk Vase - A Beauty
- _____ 161. **Teal - Squatty 5¾" Long Thumbprint Vt. Base - 3½" Base - 5¼" Top - Beautiful**
- _____ 162. **M - Miniature 4⅝" JIP Vase - 8 Flutes - 2" Base - Very Pretty**
- _____ 163. **Em. G - Ultra Rare - 15½" Swung Mlbg. Ohio Star Vase - Super Quality**
- _____ 164. **P - 18" Morning Glory Funeral Vase - Radial Star - 5" Base - VT.**
- _____ 165. **P - 17¾" Imp. Morning Glory Funeral Vase - 5" Star & Stars Base**
- _____ 166. M - Brockwitz 9½" Footed Prism Panels Vase
- _____ 167. Saph - 9" Fenton Fine Rib Vase - Base Roughness
- _____ 168. Metal Frame Carnival Beaded Purse - Fantastic
- _____ 169. Elec. Beaded Lorelle Clutch Purse - Rhinestone - Catch
- _____ 170. BA - Approx. 65 Carnival Buttons - Multi Patterns - In Display Case
- _____ 171. BA - Tufted Throw Pillow Hat Pin
- _____ 172. **BA - Turban Hat Pin**
- _____ 173. BA - Dragonfly Hat Pin
- _____ 174. BA - 9½", 12-Ruffle Kingfisher Bowl - Hot Australian Item
- _____ 175. P - 9" Imp. Ruffle Pansy Bowl - Multi Elec.
- _____ 176. P - Multi Elec. Imp. Grape Decanter w/Stopper - Chip on Bottom of Stopper
- _____ 177. **Rare Imp. Grape, Smoke - Decanter w/Stopper - Beautiful Radium**
- _____ 178. Smoke - Dk. Imp. Grape Vines - 4 x \$
- _____ 179. **Smoke - 7¼", 8-Ruffle Imp. Heavy Grape Bowl - Few Known**
- _____ 180. **Ultra Rare Smoke - Fashion Imp. Ruffled Compote - 7" Tall**
- _____ 181. Smoke - Imp. Vintage Grape Tib-Bit Tray
- _____ 182. **Unusual Open Rose 9" Imp. ICS M. Ftd. Float Bowl - Has White Opal Marie - WOW!**
- _____ 183. Lav. - 9" Imp. Grape, Beautiful Low Ruffle Plate or Bowl - Great Pastel
- _____ 184. Clam - 9" Imp. Grape, Beautiful Low Ruffle Plate or Bowl - Great Pastel
- _____ 185. **Lav. - Imp. Grape Ruffle Compote - Pretty Pastels**
- _____ 186. **Lav. - Ftd. 7⅞" Rd. Imp. Lustre Rose Bowl - What a Rarity**
- _____ 187. P - Imp. Flute Breakfast Size Cream & Sugar - Rare Beauties

188. A - 9" Imp. Open Rose Plate - Beautiful Example
189. 1 of 2, Smoke - Mid-Size Imp. Windmill Pitcher - Tiny Lip Flake
190. HOT, Beautiful, 10 1/4" Imp. P - Homestead Chop Plate
191. B - Scarce JIP, FTD., Horse Med. Bowl
192. A - N 9" Smooth Back Strawberry Plate - Multi Irid.
193. A - N BW, Three-Fruits Plate - Light Fruit Wear
194. P - N Beautiful Springtime Butter Dish w/Lid
195. B - Collar Base, 9", 8-Ruffle Dragon & Lotus Bowl - Beauty
196. P - N 11" Ruffle Grape & Cable, Collar Base, Bowl
197. Amber - Fenton Small Rib Pedestal Cuspidor
198. Smoky Lav. Pastel - N Rd. Bushel Basket, Beauty
199. B - O.E, JIP, Hat, BW Pattern
200. Amberina - 7 1/2" Ruffled Acorns Bowl
201. Red - 5 1/4" Fenton Stippled Rays ICS Bowl - Top Notch
202. Clam - Imp. Oval Pansy Relish
203. 1968 Hard Bound Marion Hartung Books - Set of 9 Complete
204. P - N Acorn Burrs 5" Berry Bowl
205. P - N Acorn Burrs Spooner
206. B - 5 1/2" N Peacock & Urn ICS Bowl - Elec.
207. Rare 6 1/4" B - Sailboats Plate - Orange Tree Ext.
208. Powder B - 4-Sides Up - Rare Kittens Bowl
209. P - N Singing Birds Mug - Multi Elec.
210. P - N Stippled Dandelion Mug
211. Horehound - N Dandelion Mug - Lg. Crack
212. M - Fenton Waterlily Cattail Tumbler - Dark
213. Radium B - Beaded Stork & Rushes Tumbler
214. B - N Peacock at Fountain Tumbler - Elec. Highlights
215. P - N Singing Birds Tumbler - Elec. Highlights
216. G - Collar Base - Ruffled Peacock & Grape Bowl - Extra Nice
217. G - Spat Ftd. - Ruffled Peacock & Grape Bowl - Extra Nice
218. G - Collar Base - 3 in 1 Peacock & Grape Bowl - Super - Rare Shape
219. M - Collar Base, ICS, Peacock & Grape Bowl
220. M - Ruffle Collar Base Peacock & Grape Bowl - Pretty
221. Rare A - 9" Concord Plate - Highly Desirable
222. B - Ruffled Beautiful, Heart & Vine Bowl
223. Beautiful B - Ruffle, Collar Base Dragon & Lotus Bowl
224. B - Beautiful 8 1/2" Rd. Fenton Holly Bowl
225. M - Fenton Holly Plate - Pinks, Yellows
226. Scarce A - Fenton Ruffle Peacock & Urn Bowl
227. M - 8" Rd. Fenton Peacock & Urn Bowl
228. B - 9", 8-Ruffle, Persian Med. Bowl - Rare Beaded Berry Ext.
229. M - Pumpkin - Persian Med. Hair Receiver - Beautiful Example
230. Rare, Rare B - 1911 B.P.O.E. Atlantic City Bell
231. Teal - 7" ICS Acorn Bowl - Beautiful Rare Color
232. P - N PCE, 3-Fruits Bowl - Smooth Ext. - Very Pretty
233. A - N 3-Fruits Plate - BW Ext.
234. B - N Stippled 3-Fruits Plate - Elec. Highlights
235. A - 6 1/4" Pine Cone, 12-Sided Plate - Little Rarity
236. M - 6 1/4" Pine Cone, Rd. Plate - Just as Rare & Pretty
237. Scarce A - 5 1/2" Tri-Corner Peacock Tail Fenton Plate
238. M - 5 1/2" Feathered Serpent Tri-Corner Plate
239. M - 7" Extra Flat, Fishscale & Beads Plate - Pastel Irid.
240. M - 6 1/2" Imp. Grape Plate - Radium
241. Beautiful M - 6 1/2" Garden Path Plate - BW Ext.
242. M - My Ladys Powder Box - A favorite with collectors - Rich Quality - A or B
243. M - Mini Scroll Pin Tray
244. M - 4 1/4", 8-Sided, Small Basket, Sowerby Pin Tray
245. Outstanding G - Fenton Peacock Tail Card Shape Bon Bon
246. B - Fenton Mini Blackberry Compote - Tiny Base Nick
247. B - 9 1/4" Low Ruffled 3 in 1 Ribbon Tie Plate??
248. MM - Orange Tree Hat Pin Holder - Normal Foot Roughness
249. Lav. - N Grape & Cable Hat Pin Holder - One Foot Chipped on this Rarity
250. Beautiful M - Grape & Cable Dresser Tray
251. P - Grape & Cable Plate - N, BW, Multi Elec.
252. Deep G - Short Ped., Fenton Small Rib Rose Bowl
253. Scarce A - Tri-Corner Wind Flower Hdl. Nappy
254. P - 9 1/2" PCE, Collar Base, Wishbone, BW Bowl - Multi Elec.
255. P - Spat Ft., 9" Ruffled 3-Fruits Med. Bowl - Tiffany Irid Look, WOW!
256. Extra Nice G - Ftd., Ruffled, N Wishbone Bowl
257. Beautiful Radium Elec. A - Ruffled Imp. Pansy Bowl
258. P - Ruffled Imp. Radium Star of David Bowl
259. Helios G - Scroll Embossed Plate - Radium Gold & Silver
260. M - Collar Base, Ruffle Dragon & Lotus Bowl
261. M - 7 1/2" Ruffled Fenton Grape & Cable Bowl
262. G - 9" Spat Ft. Peacock & Grape Plate
263. Rare A - Orange Tree Loving Cup - Open Bubble on Base
264. Vas. - JIP, Ft., Horse Med. Bowl
265. Super Dark M - 9 1/2" Ruffled Ftd. Hearts & Trees Bowl
266. M - Hearts & Flowers Flat Plate - Nice Example
267. Super Pastel Lav. - 9" N Strawberry Plate - BW Ext.
268. AO - Hearts & Flowers Compote - Beautiful Butterscotch Overlay
269. BO - Super Pastel Hearts & Flowers Compote - Minor Base Fleck
270. I.B. - Wide Panel Epergne - Missing Center Lily - Rim Bruised
271. W - One Only - Wide Panel Epergne Side Lily
272. P - Wishbone Single Epergne - Lily Only
273. G - 3 Genuine Beetles - Iridized - Made into Very Attractive Jewelry Pins
274. Multi Elec. P - Ruffled Rib Back Good Luck Bowl

262



266



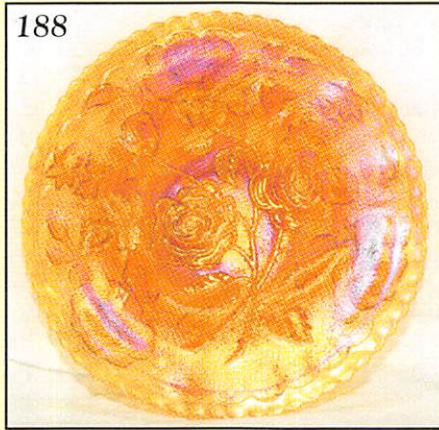
292



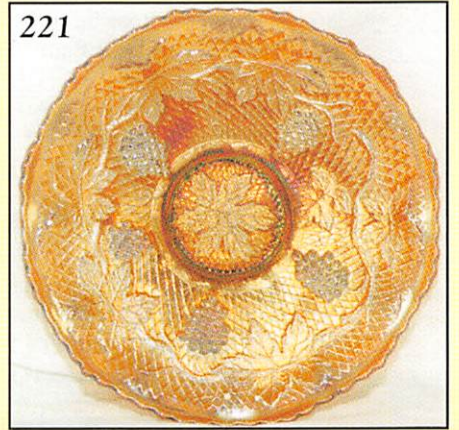
39



188



221



234



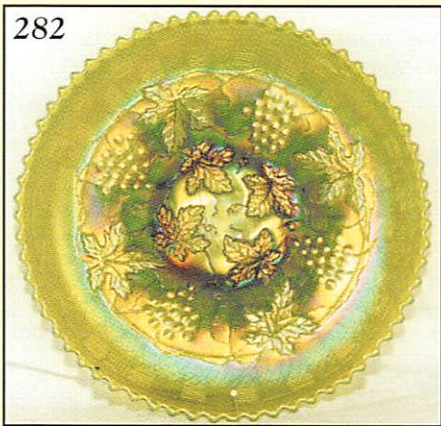
201



281



282



207



310



- _____ 275. Rare AO - Ruffled Good Luck Bowl - Rib Ext.
 _____ 276. B - Thin Base, PCE, Stippled Good Luck Rib Back Bowl
 _____ 277. P - Multi Elec., PCE, Good Luck Bowl - Rib Back
 _____ 278. PM - Ruffled Good Luck, Rib Back Bowl - Yellows & Blues
 _____ 279. Scarce B - N Drapery Rose Bowl - Base Flick
 _____ 280. PM - 10 1/4" Acanthus Chop Plate
 _____ 281. P - Super Imp. 9" Scroll Embossed Plate
 _____ 282. Emerald G - N Grape & Cable Vt. Plate - BW Ext.
 _____ 283. Emerald G - N Stippled Grape & Cable Plate - Ribbed Ext.
 _____ 284. P - 9" Grape & Cable Vt. Plate - Smooth Back - Gorgeous Elec.
 _____ 285. P - N Strawberry Plate - BW Ext. - Multi Satin
 _____ 286. P - N Ruffle Rose Show Bowl - All Time Favorite
 _____ 287. A - 9" N Peacocks Plate - Rib Back - Neat Pastel Base Glass
 _____ 288. IG - N Peacocks Plate - Rib Back - Beautiful Pastel Irid.
 _____ 289. P - N Peacocks Plate - Rib Back - Beautiful Gold & Purple Highlights
 _____ 290. P - Ruffle N Hearts & Flowers Bowl - Scarce Color - Attractive Gold & Purples
 _____ 291. Scarce P - N Blossom Time Compote
 _____ 292. B - Rich Multi Elec. Fenton Peacock & Urn Plate
 _____ 293. B - Multi Elec. Peacocks Plate - Rib Back
 _____ 294. P - Ruffled N Peacocks Bowl - Beautiful, But One Tip Chipped
 _____ 295. P - PCE Peacocks Bowl - Rib Ext. - Beautiful Multi Elec.
 _____ 296. B - PCE Peacocks Bowl - Rib Back - Way Above Average
 _____ 297. Beautiful Rich M - PCE Peacocks Bowl - Rib Ext.
 _____ 298. G - 9" ICS Mlbg. Collar Base, Fleur de Lis Bowl - Radium Blues
 _____ 299. G - 9" ICS Mlbg. Collar Base, Fleur de Lis Bowl - Radium Gold & Purples
 _____ 300. A - 10", 6-Ruffle Mlbg. Primrose Bowl - Satin Purples & Golds
 _____ 301. M - Mlbg. Rare Radium Hobnail Tumbler - A or B
 _____ 302. Very Rare G - Mlbg. Roses & Fruits Bon Bon - Outstanding Example
 _____ 303. G - Radium Mlbg. 6" Cosmos Plate or Low Bowl - Super
 _____ 304. Great Satin M - 9", 6-Ruffle Mlbg. Blackberry Wreath Bowl
 _____ 305. Super Detailed Radium 7 1/2" Mlbg. A - 6-Ruffle Court House Bowl
 _____ 306. A - Mlbg. 7" Radium Ribbon Edge Grape Wreath Bowl - Super
 _____ 307. Super Radium Elec. 7 1/2" Mlbg. A - Blackberry Wreath Bowl
 _____ 308. Radium 7" Sq. Mlbg. A - Beautiful Strawberry Wreath Bowl
 _____ 309. G - 10" Mlbg. 6-Ruffle, Lg. Mold, Peacock & Urn Bowl - Beauty
 _____ 310. G - Mlbg. Lg. Ruffle Compote - A Real Dandy
 _____ 311. Beautiful Radium Mlbg. 9 1/4" Rd. Flared Deep, Lg. Mold, A - Peacocks Bowl
 _____ 312. Scarce G - 8 3/4", 6-Ruffle Mlbg. Mystery Peacock Bowl
 _____ 313. G - 8" Rd. Trout & Fly Bowl - Radium Beauty
 _____ 314. M - Daisy & Plume 3 Ftd. Rose Bowl - Raspberry Int.
 _____ 315. G - N Mini 4 1/4", 6-Ruffle Flute Compote
 _____ 316. PO - Sgn. N Script Nautilus Creamer - Outstanding Example
 _____ 317. PO - 7 1/4" Tri-Corner Ski Star & Compass Bowl - Elec. M Overlay
 _____ 318. PO - 9 1/4", 10-Ruffle Apple Blossom Twigs Bowl
 _____ 319. PO - 9" Stippled Petals Banana Bowl - Favorite Shape of Thomas Dugan
 _____ 320. Fiery A - Beautiful Dugan Wreath Cherry Banana Bowl - 12" Long
 _____ 321. W - 9", 10-Ruffle Frosty Double Stem Roses Bowl
 _____ 322. Beautiful A - 9" Dugan Fanciful Ruffled Plate
 _____ 323. PO - 9 1/2", 10-Ruffle Fanciful Bowl - 2 1/2" Opal - WOW!!
 _____ 324. P - 9 1/4", 10-Ruffle Dugans Wishbone & Spades Bowl
 _____ 325. P - 10 1/2" Flat Dugan Wishbone & Spades Chop Plate - Multi Purple & Gold
 _____ 326. P - 9", 10-Ruffle Apple Blossom Twigs Bowl
 _____ 327. P - 9" Dome Base, 10-Ruffle Flowers & Frames Bowl - Tiffany Look
 _____ 328. P - 9 1/2", 10-Ruffle, Dome Base Flower & Frames Bowl - Super Multi Elec.
 _____ 329. P - 14 1/4" Elec. Morning Glory Funeral Vase - 5" Base w/Stars - 11" Top
 _____ 330. P - 14 1/4" Elec. Morning Glory Funeral Vase - 5" Base w/Stars - 8 3/4" Top
 _____ 331. B - 17" Rustic Funeral Vase - 5" Base - 7" Top - Multi Elec.
 _____ 332. Super 7" Tri-Corner CRE Dugan Bells & Beads, P - Bowl - Elec.
 _____ 333. P - 8" CRE, 6-Ruffle, Six Petals Dugan Bowl - Elec. Greens & Purples
 _____ 334. P - 7 1/4" Tri-Corner Six Petals Bowl - Elec. Blues & Yellows
 _____ 335. P - 7 1/2" 6-Ruffle Dugan Holly Berry Bowl
 _____ 336. A - Fenton Stipple Rays Bon Bon
 _____ 337. G - Wreath Roses Stemmed Bon Bon
 _____ 338. M - Imp. Grape 9" Ruffle Bowl
 _____ 339. M - 9" Imp. Pansy Bowl
 _____ 340. M - 4 1/4" Flute Bowl w/Metal Frame and Spoon - A or B
 _____ 341. G - 5 1/4" Rd. Little Flowers Bowl
 _____ 342. A - 6 1/2" Westmoreland Shell Dish - A or B
 _____ 343. Teal - 4 1/2" Westmoreland Shell Dish - A or B
 _____ 344. BO - 8 1/2" Ruffled Westmoreland Smooth Rays Bowl
 _____ 345. P - 3 1/2" Tall Dugan Royal Luster Rose Bowl???
 _____ 346. IG - 2 1/2" Flower Frog
 _____ 347. P - Imp. Grape Decanter - No Stopper
 _____ 348. G - Imp. Grape Decanter - No Stopper
 _____ 349. M - Imp. Grape Decanter - No Stopper
 _____ 350. M - 9 1/2" Tall Imp. Waffle Block Hdl. Basket
 _____ 351. Helios G - Imp. Scroll Embossed Ruffle Compote
 _____ 352. PM - Imp. Star Med. Milk Pitcher
 _____ 353. M - 7 1/2" Tree Bark Vase

- _____ 354. M - Flashed Honeycomb Whiskey Bottle - Not Too Old
- _____ 355. M - 1986 ACGA Morning Glory Mini Pitcher
- _____ 356. B - 1976 Jst. C Indian Toothpick Holder
- _____ 357. Contemp. BA - Fenton Swan Paperweight
- _____ 358. Black Knight Bimbah Elephant Paperweight - 1981 Robert Henry
- _____ 359. B - Contemp. Fenton Whirling Star 8 1/4" Vase
- _____ 360. LGO - 1986 ICGA Poppy Rose Bowl
- _____ 361. W - 1986 ICGA Poppy Rose Bowl - Persian Pearls
- _____ 362. G - Peacock Tail Ruffled Fenton Compote
- _____ 363. P - 8 1/2" Ruffle Coin Spot Bowl
- _____ 364. A - 3 in 1 Persian Med. Bowl
- _____ 365. **P - Imp. 5 1/2", 8-Ruffle Open Rose Bowl - Real Cutey**
- _____ 366. M - 8" Ruffle Fenton Stipple Rays Bowl
- _____ 367. A - N Fine Cut & Roses Ftd. Candy Dish
- _____ 368. **M - 5 1/4", 6-Ruffle Ftd. Persian Med. Grape & Cable Bowl**
- _____ 369. M - 6 1/4" Ruffled Fishscale & Beads Bowl
- _____ 370. M - 6 1/4" Ruffled Fishscale & Beads Bowl
- _____ 371. M - Mini Ped. Nut Cup
- _____ 372. M - 2 1/2" Flower Frog
- _____ 373. M - Garland Rose Bowl
- _____ 374. M - 5 1/2", 6-Ruffle Peacock Tail Bowl - Starred Base
- _____ 375. M - 6 1/4", 6-Ruffle Fenton Vintage Bowl
- _____ 376. **M - 5 1/2", 6-Ruffle Flowering Dill Bowl**
- _____ 377. G - 9", 6-Ruffle Heart & Vine Bowl
- _____ 378. G - 8" Ruffle N Beads Bowl
- _____ 379. A - Fenton Flowers Rose Bowl - Orange Tree
- _____ 380. M - 6", 6-Ruffle Sailboats Bowl
- _____ 381. **G - 5 1/4", 2-Row OE Blackberry Bowl - Scarce Color**
- _____ 382. M - 6" JIP 2-Row OE Basket
- _____ 383. M - 6 1/4", 2-Sides Up OE Basket
- _____ 384. M - 6", 4-Sides Up Fenton Holly Bowl
- _____ 385. M - 5 1/4", 6-Ruffle Little Flowers Bowl
- _____ 386. P - N Fine Cut & Roses Rose Bowl - Feet Roughness
- _____ 387. BA - Contemp. Fenton 7 1/2" Persian Med. Hdl. Basket
- _____ 388. P - 9 1/4" Contemp. Fenton Persian Med. Plate
- _____ 389. A - Contemp. Owl Toothpick Holder - Sign RW
- _____ 390. PM - Contemp. Double Bunny Egg Cup - Sign RW
- _____ 391. P - Contemp. Fenton 8 1/2" Dogwood Bowl
- _____ 392. B - Contemp. Holly Toothpick Holder
- _____ 393. Pink - Contemp. Westmoreland Robin on Nest Bowl
- _____ 394. Amber - Imp. Contemp. 3rd Day of Xmas Plate
- _____ 395. M - Dugan Coin Dot Compote
- _____ 396. PO - 6 1/4", 8-Ruffle Dugan Bells & Beads Bowl
- _____ 397. P- N Springtime Sugar Bowl w/No Lid
- _____ 398. A - Fenton 9 1/4", 3 in 1 Vintage Bowl
- _____ 399. P - Imp. Pansy Bowl - Rim Chips
- _____ 400. G - Wreath Roses Ped. Bon Bon
- _____ 401. A - Wreath Roses Ruffle Compote
- _____ 402. A - N David & Bows Ruffle Bowl
- _____ 403. M - 6", 6-Ruffle Fruits & Flowers Bowl
- _____ 404. A - 6", 6-Ruffle Fruits & Flowers Bowl
- _____ 405. Vas. - Collar Base, Ruffled Peacock & Grape Bowl - Base Heat Flash

- _____ 406. PM - Ftd. 10 1/4" Floral Optic Cake Plate
- _____ 407. PO - 6", 8-Ruffle Ski Star & Compass Bowl
- _____ 408. P - N Raspberry Gravy Boat - Rough Feet
- _____ 409. P - N Fine Cut & Roses Rose Bowl - Foot Chipped
- _____ 410. **P - 5", 8-Ruffle Imp. Dia. Lace Bowl - Super Elec.**
- _____ 411. M - Stork & Rushes Punch Cup
- _____ 412. M - Imp. Hobstar Creamer
- _____ 413. M - Imp. Hobstar Spooner
- _____ 414. M - Imp. Hobstar Sugar w/Lid
- _____ 415. B - 6 1/2" Dia. & Bow Vase - Base Chip
- _____ 416. M - 474 Compote - Ruffled - IG
- _____ 417. Clear - Non Irid, 7" N Tri-Corner Crystal Plate "Oriental" Collection

 **THANK YOU FOR
ATTENDING THE AUCTION**

CARNIVAL GLASS AUCTIONS CALENDAR OF EVENTS

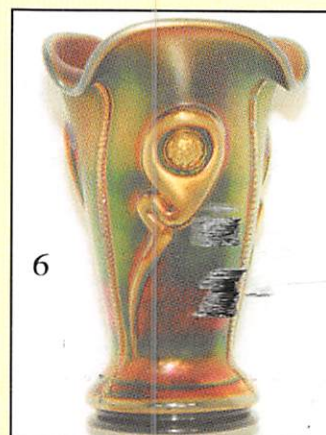
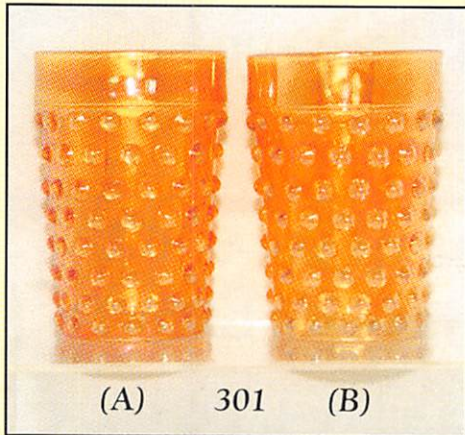
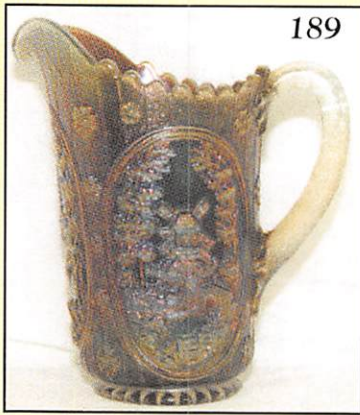
December 4, 1999
at Boonville, Missouri

January 8, Year 2000
at Boonville, Missouri
9th Annual Extravaganza

March 11, 2000
at Boonville, Missouri

For Free Color Catalogs & Information Write:
Mickey Reichel
516 Third Street, Boonville, MO 65233-1536
or Call: 660-882-5292 days or
660-882-5283 evenings

**CALL TODAY TO SELL
YOUR GLASS FOR
YEAR 2000
1 PC. OR 1000+ PCS.**



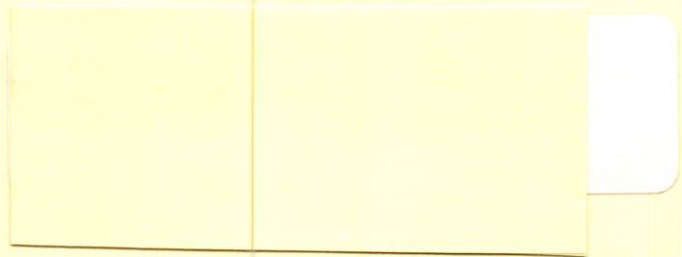
MICKEY REICHEL
ANTIQUE & AUCTION, L.C.
516 THIRD STREET
BOONVILLE, MO 65233-1536



FIRST CLASS MAIL



SPECIAL INVITATION TO:



“EXCITEMENT BUILDS AS THE CROWD GATHERS AT THE MICKEY REICHEL AUCTION COMPANY!”