

BURNS

AUCTION SERVICE

Carnival Glass Auction

Friday, November 12, 1999
4:00 P.M.

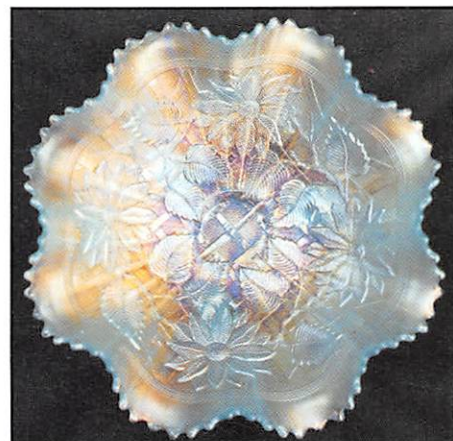
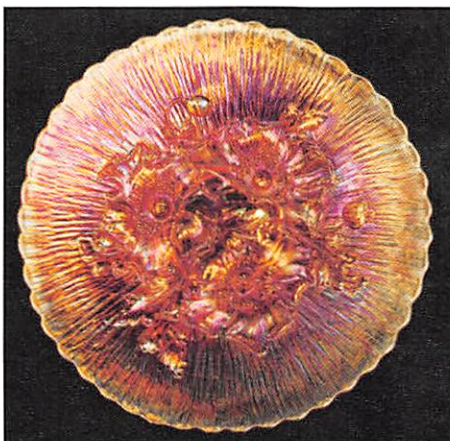
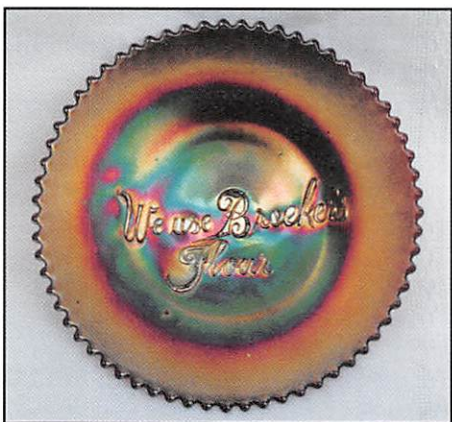
Preview: 12:00 Noon

at the

Holiday Inn – Springfield South
383 East Leffel Lane
Springfield, Ohio 45505

(937) 323-8631

(Just off Exit 54 of I-70)



Well, it's getting near the end of the year...we're nearing the end of the auction season...(maybe). We have glass from the collection of Oran Baker plus other consignments to sell at auction to the highest bidder. There are a number of quality items in super condition with great color offered for sale at this time. Remember that this glass is getting really tough to find out in this world — these auctions bring you some of the best you'll find... hope to see ya there.

We are doing something different this time by having a Friday evening only auction. This will free up everyone's weekend to go to flea markets, shows, a Boonville Auction, etc. So be sure to check it out — we won't keep ya that long!

The Holiday Inn South of Springfield, Ohio will host the event. It has a great location right off I-70 at Exit 54. They have a Holidome and of course the Springfield area antique malls are right down the Interstate. For reservations call the motel direct at (937) 323-8631 and be sure to mention Burns Auction Service.

Mail bids, e-mail bids, fax or phone bids are due by Wednesday, November 10, 1999.

CHECK OUT BURNS AUCTION SERVICE ON THE WEB!

Visit our new Web site for information on upcoming auctions, complete auction listings and photos of auction highlights. You can e-mail your bids or requests for information.
<http://zeus.kspress.com/woodsland/burnsauction> e-mail: brnzauctsv@aol.com

BURNS AUCTION SERVICE

Tom Burns
P.O. Box 608
Bath, New York 14810
(607) 776-7942

Bill Richards
44 Water St., Poland, OH 44514
(330) 757-2001
FAX (330)-757-4917

Bill Richards, III
2253 Country Lane
Poland, OH 44514
(330) 755-2620

Mail Bids honored under the following conditions.

1. No deposit required, Bidders will take full responsibility to honor any and all bids we execute for them. Payment in full plus postage and handling required after notification and before we ship any item to them.
2. Items are bid on in perfect condition with average or above average iridescence OR as listed in the brochures. Bids will not be carried out when damage on an item has been found during the auction. **PEOPLE PRESENT AT AUCTION ARE RESPONSIBLE FOR FINDING ANY PINHEADS, WEAR, SPOTTINESS, MANUFACTURER'S DEFECTS OR ANY OTHER MINOR FLAWS, ETC.**
3. Successful bidders will be notified by collect call from the auctioneer (**so be sure to include the phone number**).
4. Phone inquiries about the glass or any other questions are welcome.
5. If you have some other person at the auction bidding for you, they must pay for the item before taking it.
6. Any terms or conditions given the day of the auction will supersede any previously published information.
7. Mail, e-mail, fax and phone bids are due by Wednesday, November 10, 1999.

- | | |
|--|--|
| <p>____ 1. 1991 ICGA St. Louis Fenton Shoe w/ Roses – Red</p> <p>____ 2. St. Clair Holly Amber Handled Mug – Red</p> <p>____ 3. IG 474 Vase – Red</p> <p>____ 4. 6" 1993 HOACGA Good Luck Plate – Red</p> <p>____ 5. New Farmyard 8 Ruffled Bowl – Red</p> <p>____ 6. 1979 HOACGA Handled Loving Cup – Red</p> <p>____ 7. 1982 ICGA Frolicking Bears Ruffled Spittoon – Red</p> <p>____ 8. 1988 (or 89) ACGA Morning Glory Pitcher – Red</p> <p>____ 9. 1971 St. Clair Elks Plate in Original Box – Mari.</p> <p>____ 10. L.G. Wright (?) Grapes w/ Lattice Tankard Water Pitcher – Ice Blue</p> <p>____ 11. M'burg Ohio Star Handled Toothpick Holder – Crystal (scarce; perfect)</p> <p>____ 12. Imperial Octagon (?) Stemmed Rose Bowl Whimsey from Cordial – Crystal (scarce; has a bluish tint)</p> <p>____ 13. Czech Handled Miniature Salt Dip – Mari. / Blue Handles (very scarce and unusual)</p> <p>____ 14. (3) Interior Ribbed Stemmed Wine Glasses – Crystal / Irid. (nice irid.; blown in mold items)</p> <p>____ 15. 1911 ROCHESTER SHRINERS HANDLED DOUBLE SHOT GLASS – CRANB. FLASH / GOLD (VERY SCARCE; GREAT GOLD AND CRANBERRY COLOR; EXCELLENT CONDITION)</p> <p>____ 16. Fenton Waterlily and Cattail Tumbler – Amyth. / Opal. (not carnival but a very rare item; nice)</p> <p>____ 17. Fenton Waterlily and Cattail Whimsey Handled Candy Dish from Spooner – Clear Opal. (unusual shape; nice flare at top)</p> <p>____ 18. N'wood Novelty Twig Spittoon Shaped Bud Vase – Clear Opal. (scarce; nice opal.)</p> <p>____ 19. N'wood (McKee) Diamond Point Handled Whimsey 2 Sided Bushel Basket – Ebony (rare shape for this item; unusual)</p> | <p>____ 20. N PEACOCKS BOWL W/ PCE AND RIBBED EXT. – PURP. (ABSOLUTELY BEAUTIFUL; HAS ROUGH CHIPS ON 2 SPOTS ON EDGE)</p> <p>____ 21. N HARVEST POPPY STEMMED RUFFLED COMPOTE – DK. MARI. (RARE AND VERY DESIRABLE; NICE DARK COLOR AND IRID.)</p> <p>____ 22. N Raspberry Stemmed Ruffled Compote – Green (a brighter color for this item; usually satiny)</p> <p>____ 23. 12-3/4" Tall N. Tree Trunk Mid Size Swung Vase – Amyth. (very scarce and desirable; satiny irid.)</p> <p>____ 24. 5-1/4" Tall Imperial Miniature Morning Glory Flared Vase – Green (cute item; nice color)</p> <p>____ 25. 16-1/4" TALL IMPERIAL MORNING GLORY SWUNG FUNERAL VASE – PURP. (RARE AND DESIRABLE; SUPER IRID. AND NICE COLOR; MAY HAVE A COUPLE CINDER BURNS)</p> <p>____ 26. Pair Imperial Premium Candlesticks – Smoke (scarce color w/ really nice irid.)</p> <p>____ 27. Westmoreland Stork ABC Cereal Bowl – Lt. Mari.</p> <p>____ 28. 8-1/2" Fenton Vintage Grape 6 Ruffled Bowl – Dk. Mari. (has an outstanding radium irid.; super)</p> <p>____ 29. 8-1/2" Fenton Lotus and Grape Variant Ftd. Ruffled Bowl – Mari. (never seen this pattern variation before; has a 1" check in edge)</p> <p>____ 30. DUGAN RAMBLER ROSE 7 PC. BULBOUS WATER SET – AMYTH. (A VERY RARE SET AND ACTUALLY QUITE AN ATTRACTIVE EXAMPLE)</p> |
|--|--|

31. **6-1/4" DUGAN WISHBONE AND SPADES FLAT PLATE – PURP. (VERY SCARCE; FLAT W/ NICE COLOR AND IRID.)**
32. Imperial Flute Handled Breakfast Open Sugar Bowl – Purp. (super color and irid.)
33. 5" Tall Imperial Ripple Miniature Swung Vase – Dk. Mari. (super color; attractive size and color)
34. 7" Tall Imperial Ripple Small Swung Vase – Purp. (super color and irid.)
35. 8-1/2" Tall Imperial Ripple Squatty Swung Vase – Purp. (super color and irid.)
36. Fenton Orange Tree Stemmed Goblet - Souvenir "St. Ours, Quebec" – Dk. Mari. (unusual; nice color and irid.)
37. Fenton Orange Tree Stemmed 6 Ruffled Compote – Mari.
38. **FENTON 2 ROW OPEN EDGE LOW J.I.P. HAT – AMBER (RARE COLOR AND HAS A SQUATTY SHAPE)**
39. **FENTON 2 ROW OPEN EDGE 4 SIDED HAT – RED (NICE EXAMPLE; PERFECT)**
40. **FENTON SCALE BAND TUMBLER – BLUE (VERY RARE COLOR FOR THIS ITEM; TYPICAL SILVERY IRID.)**
41. **CAMBRIDGE INVERTED STRAWBERRY COVERED POWDER JAR – DK. MARI. (RARE AND DESIRABLE; GREAT COLOR AND IRID.)**
42. **CAMBRIDGE INVERTED STRAWBERRY COVERED POWDER JAR – GREEN (ANOTHER VERY SCARCE ITEM W/ EXCELLENT COLOR AND IRID.)**
43. Westmoreland File and Fan Ice Cream Shaped Compote – Mari. / Milk Glass (very scarce and desirable item; has nice mari. overlay)
44. Lot 8 Misc. Hatpins – Dark (selling choice)
45. **N G&C FTD. HATPIN HOLDER – GREEN (SCARCE; NICE BRIGHT IRID.; DESIRABLE)**
46. N G&C ftd. Hatpin Holder – Green (rare; perfect w/ nice satiny irid.)
47. N G&C ftd. Hatpin Holder – Green (rare; another example w/ satiny irid.)
48. N G&C ftd. Hatpin Holder – Purp. (very scarce w/ satiny irid.)
49. N G&C ftd. Hatpin Holder – Purp. (very scarce w/ satiny irid.)
50. **N G&C FTD. HATPIN HOLDER – DK. MARI. (VERY ATTRACTIVE EXAMPLE; NICE)**
51. N G&C Small Oval Pin Tray – Purp. (scarce item w/ nice irid.)
52. **N G&C FTD. HATPIN HOLDER – LAVENDER (VERY RARE AND DESIRABLE BASE COLOR; REALLY NICE)**
53. 13-1/4" Tall N Tree Trunk Mid-Size Swung Vase – Amyth. (very scarce w/ satiny irid.; irid. light at base)
54. N G&C ftd. Hatpin Holder – Green (rare; perfect w/ nice satiny irid.)
55. N G&C Covered Powder Jar – Purp. (perfect w/ nice color and irid.)
56. N G&C Variant 8 Ruffled Bowl w/ Plain Ext. – Amyth. (has a nice bronze irid.)
57. N Acorn Burr Handled Spooner – Purp. (scarce item)
58. N Acorn Burr Tumbler – Purp. (nice color and irid.)
59. N G&C Tumbler – Purp. (has nice blue irid.)
60. **N IVY TOWN PUMP – PURP. (RARE AND VERY DESIRABLE; NICE COLOR AND IRID.; PERFECT)**
61. **8-1/2" TALL N DRAPERY VARIANT SWUNG VASE – BLUE (VERY SCARCE; NICE IRID. THAT GETS A BIT LIGHT AT BASE)**
62. 10-1/2" Tall N 4 Pillar Ribbed Swung Vase – Aqua Opal. (perfect w/ a nice pastel finish)
63. **N DANDELION HANDLED MUG – AQUA OPAL. (RARE AND DESIRABLE; IRID. LIGHT ON INSIDE)**
64. N Dandelion Handled Mug – Purp. (scarce; satiny irid. that is light on inside)
65. **6" "WE USE BROEKER'S FLOUR" FLARED PLATE – AMYTH. (VERY RARE AND VERY DESIRABLE; SATINY IRID.)**
66. N Raspberry ftd. Handled Gravy Boat – Amyth. (scarce w/ nice color and irid.)
67. N Singing Birds Handled Mug – Dk. Mari. (super color)
68. (3) N Peacock at the Urn Stippled Ind. Ice Cream Bowls – Blue (very scarce and perfect, nice; average color and irid.; selling choice)
69. (3) N Peacock at the Urn Ind. Ice Cream Bowls – Mari. (nice color and irid.; selling choice)
- 69A. N Butterfly Handled Bon Bon w/ Plain Ext. – Amyth. (satiny; light base color)
70. **N PEACOCKS RUFFLED BOWL W/ RIBBED EXTERIOR – AQUA OPAL. (RARE AND VERY DESIRABLE; PASTEL W/ NICE LIGHT IRID.)**
71. **N PEACOCKS FLARED PLATE W/ RIBBED EXT. – PURP. (VERY SCARCE AND DESIRABLE; BRIGHT MULTI-COLORED IRID. W/ A NICE STRETCH EFFECT)**
72. **N PEACOCKS FLAT PLATE W/ RIBBED EXT. – DK. MARI. (VERY SCARCE AND VERY DESIRABLE; HAS REALLY NICE DARK COLOR AND IRID.; NICE)**
73. **N PEACOCKS FLAT PLATE W/ RIBBED EXT. – WHITE (VERY SCARCE; NICE AND FROSTY W/ A MULTI-COLORED IRID.)**
74. **N WILD ROSE FTD. FLARED NUT BOWL – ELEC. BLUE (AN AVAILABLE PATTERN BUT IN A VERY DESIRABLE COLOR W/ GREAT IRID.)**
75. **N EMBROIDERED MUMS RUFFLED BOWL W/ RIBBED EXT. – ELEC. BLUE (RARE AND DESIRABLE; NICE BRIGHT MULTI-COLORED IRID.; NICE)**
76. **N EMBROIDERED MUMS RUFFLED BOWL W/ PLAIN EXT. – ICE BLUE (RARE AND DESIRABLE; IRID. A BIT SILVERY/ GOLD)**
77. N Fine Cut and Roses ftd. Ruffled Candy Dish w/ Fancy Int. – Ice Blue (scarce w/ a low ruffle; feet ok)
78. **N HEARTS AND FLOWERS RUFFLED BOWL W/ RIBBED EXT. – ICE GREEN (RARE AND DESIRABLE; HAS NICE COLOR AND IRID.)**
79. **N HEARTS AND FLOWERS RUFFLED BOWL W/ RIBBED EXT. – ICE BLUE (VERY SCARCE; NICE COLOR AND AVERAGE IRID.)**
80. **N HEARTS AND FLOWERS STEMMED RUFFLED COMPOTE W/ RIBBED EXT. – AQUA OPAL. (RARE AND DESIRABLE; OPAL. ON EDGE W/ A NICE BUTTERSCOTCH OVERLAY)**
81. **N HEARTS AND FLOWERS STEMMED RUFFLED COMPOTE W/ RIBBED EXT. – ICE GREEN (RARE AND VERY DESIRABLE; NICE COLOR AND IRID.; GETTING TOUGH TO FIND)**
82. **N HEARTS AND FLOWERS STEMMED RUFFLED COMPOTE W/ PLAIN EXT. – ICE BLUE (RARE AND VERY DESIRABLE; NICE COLOR AND IRID.; TOUGH)**
83. **N HEARTS AND FLOWERS STEMMED RUFFLED COMPOTE W/ RIBBED EXT. – BLUE (VERY SCARCE AND VERY DESIRABLE; NICE COLOR AND NICE MULTI-COLORED IRID.)**
84. **9-1/2" N WISHBONE BOWL W/ PCE AND BASKET-WEAVE EXT. – WHITE (RARE AND VERY DESIRABLE; FROSTY W/ BRIGHT MULTI-COLORED IRID.)**
85. **N ORIENTAL POPPY TANKARD WATER PITCHER – PURP. (ALWAYS DESIRABLE; THIS EXAMPLE HAPPENS TO HAVE GREAT BRIGHT IRID.)**
86. **N FRUIT AND FLOWERS STEMMED HANDLED BON BON – AQUA OPAL. (RARE AND VERY DESIRABLE; A SUPER PASTEL EXAMPLE)**
87. **N FRUIT AND FLOWERS STEMMED HANDLED BON BON – ICE BLUE (RARE AND VERY DESIRABLE; SUPER COLOR AND IRID.)**
88. N Fruit and Flowers Stemmed Handled Bon Bon – Blue (scarce; has nice bright multi-colored irid.)
89. **N ROSE SHOW 8 RUFFLED BOWL – DK. MARI. (VERY DESIRABLE AND VERY NICE; DARK COLOR)**

- _____ 90. **N LOTUS AND POINSETTIA FTD. RUFFLED BOWL W/ RIBBED EXT. – ICE BLUE (VERY RARE AND VERY DESIRABLE; SUPER COLOR AND GOLDISH IRID.)**
- _____ 91. **N POPPY SHOW FLAT PLATE – DK. MARI. (RARE AND VERY DESIRABLE; HAS NICE DARK COLOR AND BRIGHT IRID.)**
- _____ 92. **N POPPY SHOW RUFFLED BOWL – ICE BLUE (RARE AND VERY DESIRABLE; ACTUALLY QUITE A NICE EXAMPLE)**
- _____ 93. **N DAISY AND DRAPE FLARED FTD. VASE – AQUA OPAL. (RARE AND DESIRABLE; NICE OPAL. AND BUTTERSCOTCH OVERLAY)**
- _____ 94. N Daisy and Drape Turned In ftd. Vase – White (scarce and desirable; nice and frosty)
- _____ 95. **N GOOD LUCK 8 RUFFLED BOWL W/ RIBBED EXT. – AQUA/TEAL (VERY RARE BASE COLOR; IRID. A BIT GOLDISH; TYPICAL)**
- _____ 96. **N GOOD LUCK 8 RUFFLED BOWL W/ RIBBED EXT. – ELEC. BLUE (VERY DESIRABLE; AN ATTRACTIVE ITEM W/ BRIGHT IRID.)**
- _____ 97. **N GOOD LUCK BOWL W/ PCE AND BASKETWEAVE EXT. – GREEN (VERY SCARCE AND VERY DESIRABLE; SATINY FINISH)**
- _____ 98. N Good Luck Bowl w/ PCE and Basketweave Ext. – Mari. (scarce w/ a nice satiny finish)
- _____ 99. N Three Fruits Plate w/ Basketweave Ext. – Mari. (dark and has a nice satiny finish)
- _____ 100. **N THREE FRUITS MEDALLION FTD. RUFFLED BOWL W/ MEANDER EXT. – AQUA OPAL. (RARE AND VERY DESIRABLE; PASTEL W/ SUPER IRID. AND HAS THE PLAIN EDGE)**
- _____ 101. N Beaded Cable Ftd. Ruffled Rose Bowl w/ Ribbed Int. – Amyth. (satiny finish)
- _____ 102. N Beaded Cable Ftd. Ruffled Rose Bowl w/ Ribbed Int. – Green (irid. on interior; unusual)
- _____ 103. **N BEADED CABLE FTD. RUFFLED ROSE BOWL – AQUA OPAL. (RARE AND DESIRABLE; HAS A NICE OVERLAY)**
- _____ 104. N Beaded Cable Ftd. Ruffled Rose Bowl – Blue (a nice example w/ nice multi-colored irid.)
- _____ 105. **N LEAF AND BEADS FTD. ROSE BOWL – ICE BLUE OPAL. (EXTREMELY RARE BASE COLOR; VERY DIFFERENT AND NOT QUITE AQUA OPAL.; REALLY NICE ITEM)**
- _____ 106. **N LEAF AND BEADS FTD. ROSE BOWL – AQUA OPAL. (RARE AND DESIRABLE; NICE COLOR AND OPAL.; ATTRACTIVE)**
- _____ 107. **N LEAF AND BEADS FTD. ROSE BOWL – ELEC. BLUE (VERY DESIRABLE; SUPER BRIGHT IRID.; REALLY NICE)**
- _____ 108. **N LEAF AND BEADS FTD. ROSE BOWL W/ FLORAL INT. – GREEN (VERY SCARCE; W/ INTERIOR PATTERN; NICE COLOR AND IRID.)**
- _____ 109. N Leaf and Beads Ftd. Rose Bowl w/ Ribbed Int. – Green (scarce; nice color)
- _____ 110. **N DRAPERY RUFFLED ROSE BOWL – AQUA OPAL. (VERY SCARCE; VERY DESIRABLE; NICE IRID. AND OPAL.)**
- _____ 111. **N FINE CUT AND ROSES FTD. ROSE BOWL W/ FANCY INT. – ICE BLUE (RARE AND DESIRABLE; NICE DARK COLOR W/ NICE IRID.)**
- _____ 112. **N EIGHT SIDED HANDLED BUSHEL BASKET – ICE BLUE (RARE AND DESIRABLE ITEM; NICE BASE COLOR AND IRID.)**
- _____ 113. **N EIGHT SIDED HANDLED BUSHEL BASKET – ICE GREEN (REALLY RARE COLOR FOR THIS SHAPE; NICE IRID.)**
- _____ 114. **N EIGHT SIDED HANDLED BUSHEL BASKET – GREEN (REALLY SHARP EXAMPLE; BRIGHT COLOR AND IRID.)**
- _____ 115. N Eight Sided Handled Bushel Basket – White (scarce; frosty w/ nice irid.)
- _____ 116. N Eight Sided Handled Bushel Basket – Dk. Mari. (scarce; nice dark color and irid.)
- _____ 117. N Round Handled Bushel Basket – Blue Opal. (not carnival; very scarce w/ nice opal.)
- _____ 118. **N ROUND HANDLED BUSHEL BASKET – AQUA OPAL. (RARE AND DESIRABLE; IRID. WORN A BIT INSIDE)**
- _____ 119. **N ROUND HANDLED BUSHEL BASKET – ICE GREEN (VERY SCARCE AND VERY DESIRABLE; AN AFFORDABLE ITEM)**
- _____ 120. **N ROUND HANDLED BUSHEL BASKET – VIOLET (AN ODD BASE COLOR; UNUSUAL W/ AVERAGE IRID.)**
- _____ 121. **N ROUND HANDLED BUSHEL BASKET – AMYTH. (ANOTHER ODD COLORED ITEM; WANTS TO BE HOREHOUND)**
- _____ 122. N Round Handled Bushel Basket – Elec. Blue (a super example w/ bright irid. w/ blue highlights)
- _____ 123. N Round Handled Bushel Basket – Blue (scarce; nice color and irid.; nice)
- _____ 124. N Round Handled Bushel Basket – Dk. Mari. (really nice color and irid.)
- _____ 125. **N ROSE SHOW FLARED PLATE – PURP. (RARE AND VERY DESIRABLE; SUPER IRID.; HAS CHIP ON ONE ROSE)**
- _____ 126. N Three Fruits Medallion Ftd. Ruffled Bowl w/ Meander Ext. – Purp. (an excellent example w/ great multi-colored irid.)
- _____ 127. N Three Fruits Domed 8 Ruffled Bowl w/ Vintage Ext. – Green (scarce color w/ nice irid.)
- _____ 128. N Three Fruits 8 Ruffled Bowl w/ Basketweave Ext. – Green (nice color and irid.)
- _____ 129. N Three Fruits 8 Ruffled Bowl w/ Basketweave Ext. – Green (irid. is spotty on interior)
- _____ 130. N Three Fruits Plate w/ Basketweave Ext. – Purp. (scarce; there is wear on the fruits)
- _____ 131. N Three Fruits Bowl w/ PCE and Basketweave Ext. – Mari. (nice dark satiny example)
- _____ 132. (6) N Acorn Burrs Handled Punch Cups – Purp. (nice color and irid.; selling so much for each set)
- _____ 133. (2) N Acorn Burrs Handled Punch Cups – Green (nice color and irid.; selling choice)
- _____ 134. N Grape Leaves 8 Ruffled Bowl – Green (actually quite an attractive item)
- _____ 135. **N PEACOCKS PLATE W/ RIBBED EXT. – ICE GREEN (VERY SCARCE AND VERY DESIRABLE; NICE IRID.)**
- _____ 136. **N PEACOCKS BOWL W/ PCE AND RIBBED EXT. – MARI. (VERY SCARCE AND VERY DESIRABLE; NICE IRID.)**
- _____ 137. N Good Luck Bowl w/ PCE and Ribbed Ext. – Dk. Mari. (another nice item; excellent color and irid.)
- _____ 138. N G&C Variant Stippled 8 Ruffled Bowl w/ Ribbed Ext. – Dk. Mari. (very scarce item; nice dark color and irid.)
- _____ 139. 6-1/4" N G&C Flat Plate w/ Basketweave Ext. – Purp. (scarce item; irid. is silvery)
- _____ 140. **N G&C BANDED FTD. HATPIN HOLDER – PURP. (RARE AND DESIRABLE VARIATION; NICE COLOR AND IRID.)**
- _____ 141. N G&C Ftd. Hatpin Holder – Lt. Mari. (scarce; has check near foot)
- _____ 142. (2) N G&C Candlesticks – Purp. (very scarce; great color w/ super irid.; well matched)
- _____ 143. N G&C Cologne Bottle and Stopper – Mari. (scarce; nice color and irid.)
- _____ 144. N G&C Ftd. Oval Banana Boat – Purp. (very scarce; nice color and irid.; a popular item)
- _____ 145. N G&C Ftd. Ruffled Small Size Fruit Bowl – Purp. (nice color and irid.; some interior wear)
- _____ 146. N Hearts and Flowers Stemmed Ruffled Compote w/ Ribbed Ext. – Mari. (scarce; nice average color and irid.)
- _____ 147. 7" Tall x 5" Wide N Diamond Point Squatty Vase – Green (nice shape and size; attractive; satiny finish)

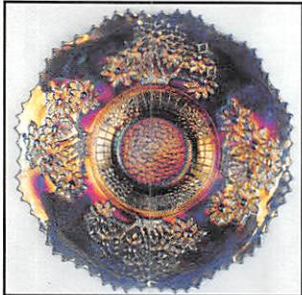
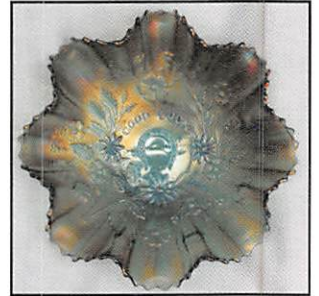
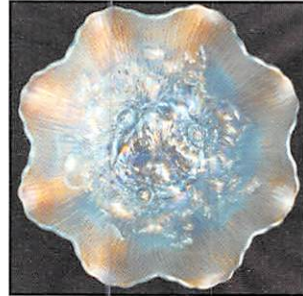
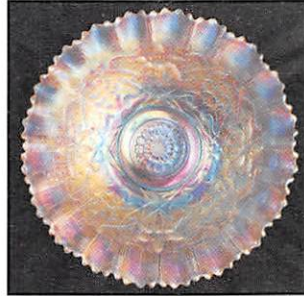
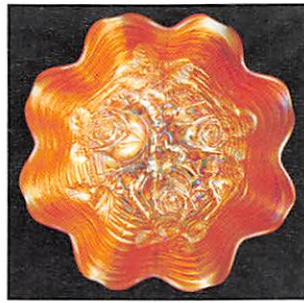
- _____ 148. 6-1/2" Tall x 5" Wide N Diamond Point Squatty Vase – Mari. (a nice marigold example like above item)
- _____ 149. 9" N. Tree Trunk Standard Swung Vase – Purp. (satiny finish)
- _____ 150. **10-1/2" N PILLAR RIBBED SWUNG VASE – ELEC. BLUE (VERY RARE COLOR FOR THIS ITEM; HAS SUPER BRIGHT IRID.; NICE!)**
- _____ 151. **8" N DRAPERY SWUNG VASE – ICE GREEN (RARE AND DESIRABLE; GREAT COLOR AND IRID.; FEET APPEAR TO BE PERFECT)**
- _____ 151a. **N DRAPERY SWUNG VASE IN A WOVEN WICKER FLOWER BASKET FRAME – DK. MARI. (BEAUTIFUL ITEM; VERY UNUSUAL ITEM TO SEE MADE UP LIKE THIS ... NEVER SAW ANOTHER)**
- _____ 152. 7-3/4" N Drapery Swung Vase – Dk. Mari. (a nice dark example; super and, again, the feet appear to be perfect)
- _____ 153. N Blackberry Stemmed 6 Ruffled Compote w/ Basketweave Ext. – Green (scarce; has nice satiny finish)
- _____ 154. N Leaf and Beads Flared Ftd. Nut Bowl w/ Rayed Int. – Green (nice color)
- _____ 155. 5-3/4" N Peacock at the Urn Stippled Ind. Ice Cream Bowl – Blue (very scarce; nice color and irid.)
- _____ 156. (5) N Peacock at the Fountain Ind. Berry Bowls – Purp. (tough if ya need them; selling so much each for set)
- _____ 157. N Signing Birds Tumbler – Green (nice color and irid.)
- _____ 158. N Singing Birds Handled Mug – Purp.
- _____ 159. N Singing Birds Handled Mug – Mari. (bright irid.)
- _____ 160. **M'BURG DIVING DOLPHIN FTD. COMPOTE W/ ROSILAND INT. – GREEN (EXTREMELY RARE AND VERY DESIRABLE ITEM; AN EXCELLENT EXAMPLE W/ SUPER IRID.)**
- _____ 161. **9-3/4" M'BURG 5 POINTED MANY STARS LARGE BOWL W/ 3 IN 1 EDGE – GREEN (RARE AND VERY DESIRABLE; RADIUM FINISH; REALLY NICE!)**
- _____ 162. **10" M'BURG FLEUR DE LEI 6 RUFFLED BOWL – GREEN (RARE AND DESIRABLE; A SUPER RADIUM FINISH W/ BLUE HIGHLIGHTS)**
- _____ 163. 9-1/2" M'burg Zig Zag Bowl w/ 3 In 1 Edge – Green (very scarce and desirable item; has a satiny finish)
- _____ 164. 7-1/4-1/2" M'burg Blackberry Wreath Bowl w/ 3 In 1 Edge – Green (nice color and irid.; satiny)
- _____ 165. **M'BURG LETTERED COURTHOUSE 6 RUFFLED BOWL – AMYTH. (ALWAYS A POPULAR ITEM; A SUPER EXAMPLE; RADIUM W/ GREAT DETAIL)**
- _____ 166. **10-1/2" M'BURG PEACOCK AT THE URN LARGE 6 RUFFLED BOWL – AMYTH. (RARE AND RADIUM; HAS BEE AND NO BEADING; NICE)**
- _____ 167. **10" M'BURG NESTING SWAN 6 RUFFLED BOWL – AMYTH. (RADIUM EXAMPLE THAT HAS ATTRACTIVE GOLD HIGHLIGHTS)**
- _____ 168. **10-1/4" M'BURG BLACKBERRY WREATH LARGE ICE CREAM BOWL – AMYTH. (ANOTHER ITEM W/ SUPER RADIUM IRID.; REALLY NICE)**
- _____ 169. **M'BURG HOBNAIL ROSE BOWL – MARI. (AN UNDER-PRICED ITEM THAT YOU JUST DON'T SEE FOR SALE)**
- _____ 169a. **M'BURG SWIRL HOBNAIL SPITTOON – DK. MARI. (RARE AND VERY DESIRABLE; NICE DARK COLOR AND IRID.)**
- _____ 170. **6-1/2" x 6-1/2" M'BURG TROUT AND FLY 4 SIDED SQUARE BOWL – AMYTH. (RARE AND VERY DESIRABLE ITEM; SATINY W/ SLIGHT WEAR ON EDGE)**
- _____ 171. **10-1/4" M'BURG SEAWEED BOWL W/ 3 IN 1 EDGE – AMYTH. (RARE AND DESIRABLE ITEM; ATTRACTIVE SATINY FINISH)**
- _____ 172. 9-3/4" M'burg Many Stars 6 Ruffled Bowl – Amyth. (attractive item w/ a good sized chip on edge)
- _____ 173. 9-1/2" M'burg Rays and Ribbons 6 Ruffled Bowl – Green (nice example w/ a radium finish)
- _____ 174. 10" M'burg Holly Whirl 6 Ruffled Bowl – Mari. (satiny finish)
- _____ 175. M'burg Peacock Tail Variant Stemmed 6 Ruffled Compote – Mari. (satiny; scarce)
- _____ 176. M'burg Hanging Cherries Handled Spooner – Mari. (perfect w/ nice color)
- _____ 177. **M'BURG LEAF AND LITTLE FLOWERS FLARED STEMMED COMPOTE – MARI. (VERY SCARCE; THIS EXAMPLE IS SATINY)**
- _____ 178. 9-3/4"-10" M'burg Hanging Cherries Large Ice Cream Bowl – Mari. (scarce; a nice satiny finish)
- _____ 179. M'burg Diamond Tumbler – Mari. (nice color and irid.)
- _____ 180. Cambridge Inverted Strawberry Spittoon – Mari. (rare and desirable; has check in body)
- _____ 181. Westmoreland Louisa Ftd. Rose Bowl – Amyth.
- _____ 182. Heisey Stemmed Wide Panel Stemmed Parfait – Lt. Mari. (unusual item; signed and has bright irid.)
- _____ 183. Dugan Puzzle Handled Round Bon Bon – White (scarce; nice frosty color and irid.)
- _____ 184. Dugan Peacock at the Fountain Tumbler – Blue (nice color and irid.)
- _____ 185. **DUGAN STORK IN THE RUSHES HANDLED MUG – BLUE (EXTREMELY RARE AND VERY DESIRABLE ITEM; EXCELLENT IRID. W/ AN UNIRIDIZED SPOT)**
- _____ 186. **DUGAN DAHLIA FTD. HANDLED WATER PITCHER – MARI. (ACTUALLY QUITE A RARE ITEM; NICE DARK COLOR W/ EXCELLENT IRID.)**
- _____ 187. **DUGAN STORK IN THE RUSHES HANDLED WATER PITCHER – MARI. (ANOTHER RARE ITEM; YA JUST DON'T SEE THEM FOR SALE; NICE SATINY FINISH)**
- _____ 188. (4) Dugan Stork in the Rushes Tumblers – Mari. (selling so much for set; matches pitcher above)
- _____ 189. Dugan Mary Ann Handled Vase – Mari. (really nice satiny example)
- _____ 190. **7" DUGAN CIRCLE SCROLL SWUNG VASE – PURP. (VERY SCARCE ITEM; HAS REALLY NICE IRID.)**
- _____ 191. 10-1/4" Dugan Pulled Loop Swung Vase – Purp. (scarce and desirable; nice irid.)
- _____ 192. 10-1/2" Dugan Spiralx Swung Vase – Purp. (nice irid.; usually found in peach opal.)
- _____ 193. **9" DUGAN RAINDROPS DOMED 10 RUFFLED BOWL – PURP. (SCARCE COLOR FOR THIS PATTERN; BLUE HIGHLIGHTS)**
- _____ 194. 7" Dugan Bellflower 6 Ruffled Crimped Edge Bowl – Purp. (sorta nice item; gold, silvery and blue irid.)
- _____ 195. 10" Dugan Lined Lattice Swung Vase – White (scarce; nice color and frosty irid.)
- _____ 196. Dugan Constellation Stemmed 6 Ruffled Compote – White (scarce; nice and frosty irid.)
- _____ 197. Dugan Many Fruits Round Punch Base Only – Mari. (scarce part if you need it)
- _____ 198. Imperial Tree of Life Car Vase (no bracket) – Mari.
- _____ 199. Imperial Hobstar Band Tumbler – Mari. (nice example)
- _____ 200. **IMPERIAL FIELD FLOWER HANDLED WATER PITCHER – PURP. (RARE AND TOUGHER TO FIND; NICE EXAMPLE)**
- _____ 201. **IMPERIAL POINSETTIA HANDLED MILK PITCHER – GREEN (RARE AND DESIRABLE; TOUGH COLOR AND A VERY NICE EXAMPLE)**
- _____ 202. Imperial Broken Arches 12 Pc. Round Punch Set – Mari. (attractive set; nice dark color; well matched)
- _____ 203. 9-1/2" Imperial Ripple Standard Swung Vase – Amber (scarce base color w/ nice irid.)
- _____ 204. 12-1/2" Imperial Ripple Mid Size Swung Vase – Green (nice size and color)
- _____ 205. **6" IMPERIAL MINIATURE MORNING GLORY FLARED VASE – SMOKE (VERY SCARCE; GREAT FLARE W/ NICE IRID.)**

206. **IMPERIAL OPEN ROSE FLAT PLATE – AMBER (RARE AND DESIRABLE; FLAT W/ GREAT IRID.)**
207. Imperial Open Rose Flat Plate – Green (very scarce; nice example)
208. Imperial Open Rose Flat Plate – Mari. (flat w/ great irid.)
209. Imperial Daisy Handled Flower Basket – Mari. (nice example; nice dark color)
210. **15" TALL x 4-1/2" BASE x 8" FLARED IMPERIAL RIPPLE FUNERAL VASE – MARI. (RARE SIZE; NICE COLOR; A VERY ATTRACTIVE ITEM)**
211. (1) 12-1/2" and (1) 10-1/2" Imperial Ripple Standard Swung Vases – Purp. (both have great irid.; selling choice)
212. 7-1/4" Tall Imperial Ripple Small Swung Vase – Green (super example for this item; great irid.)
213. 11" Tall Imperial Parlor Panels Swung Vase – Green (scarce pattern; nice color)
214. 6-1/2" Imperial Grape Flat Plate – Lime Green (scarce base color; nice)
215. **8-3/4" IMPERIAL GRAPE 8 RUFFLED BOWL – PURP. (ABSOLUTELY FANTASTIC IRID.; A REAL BEAUT!)**
216. 8-3/4" Imperial Pansy 8 Ruffled Bowl – Purp. (another super example; very nice)
217. 7-1/4" Imperial Open Rose (Lustre Rose) Ftd. Round Bowl – Purp. (very scarce color for this item; nice!)
218. Imperial Pansy Oval Ruffled Relish Tray – Purp. (another attractive item w/ great irid.)
219. Imperial Open Rose Rose Bowl – Helios Green (nice color)
220. Imperial 474 Large Handled Water Pitcher – Dk. Mari. (very nice example; really nice dark color)
221. Imperial Lustre Rose 3 Ftd. Fernery – Powder Blue (odd base glass color for this item)
222. Imperial Lustre Rose 3 Ftd. Fernery – Blue (scarce item – irid. a bit spotty on interior)
223. 11" Tall Imperial Bullseye and Beads Swung Vase – Purp. (a very attractive item w/ nice irid.)
224. Imperial Grape Decanter and Stopper – Dk. Mari. (nice dark color and irid.)
225. **FENTON FENTORIA HANDLED WATER PITCHER – DK. MARI. (RARE AND VERY DESIRABLE; GREAT DARK COLOR AND IRID.; NICE)**
226. Fenton Leaf Tiers Ftd. Water Pitcher – Dk. Mari. (rare and desirable; great color and irid.; has manuf. check in collar base)
227. **FENTON ORANGE TREE ORCHARD HANDLED WATER PITCHER W/TRI-CORNERED TOP – MARI. (VERY SCARCE AND DESIRABLE; DON'T REMEMBER THESE HAVING A TRI-CORNERED TOP)**
228. Fenton Orange Tree Orchard Tumbler – Mari. (nice color and irid.)
229. 9" Fenton Holly 6 Ruffled Bowl – Green (really nice color and irid.)
230. **9-1/2" FENTON HOLLY FLAT PLATE – GREEN (RARE AND VERY DESIRABLE; NICE COLOR AND IRID; LOOKS GREEN!)**
231. **9-1/2" FENTON HOLLY FLAT PLATE – BLUE (VERY SCARCE; NICE MULTI-COLORED IRID.)**
232. 9-3/4" Fenton Holly Flat Plate – Dk. Mari. (scarce; nice dark color and irid.)
233. 9-1/2" Fenton Holly Flat Plate – White (scarce; attractive w/ nice color and irid.)
234. **9" FENTON HOLLY 8 RUFFLED BOWL – RED (VERY RARE AND VERY DESIRABLE; DARK RED W/ SATINY IRID.)**
235. **FENTON HOLLY STEMMED 6 RUFFLED COMPOTE – RED (EXCELLENT EXAMPLE; BRIGHT RED W/ SUPER IRID.)**
236. **FENTON HOLLY STEMMED GOBLET SHAPED COMPOTE – RED (ANOTHER EXCELLENT ITEM W/ A BRIGHT DARK COLOR)**
237. **FENTON TWO ROW OPEN EDGE J.I.P. HAT – RED (VERY ATTRACTIVE ITEM FOR THIS POPULAR ITEM)**
238. **FENTON BLACKBERRY SPRAY 4 SIDED RUFFLED HAT – RED (VERY SCARCE; NICE RED W/ A SATINY FINISH)**
239. **9-1/2"-3/4" TALL FENTON FINE RIB STANDARD SWUNG VASE – RED W/ RED STREAKS (RARE AND UNUSUAL; LOOKS RED; VERY ATTRACTIVE)**
240. **9-3/4" FENTON LITTLE FLOWERS LARGE 8 RUFFLED BOWL – RED / AMBERINA (RARE AND DESIRABLE; VERY TYPICAL OF THE COLOR AND IRID. OF THESE ITEMS)**
241. **8-1/4" FENTON DRAGON AND LOTUS ICE CREAM SHAPED BOWL – RED (RARE AND DESIRABLE; NICE RED W/ A SATINY FINISH)**
242. **7-1/2" FENTON G&C LOW 8 RUFFLED BOWL – RED (RARE AND DESIRABLE; NICE MULTI-COLORED SATINY IRID.)**
243. **6-3/4" FENTON G&C LOW ICE CREAM SHAPED BOWL – RED (ANOTHER DESIRABLE ITEM W/ A MULTI-COLORED SATINY FINISH)**
244. **7" FENTON ACORN ICE CREAM SHAPED BOWL – RED (NICE RED COLOR; HAS A WEIRD SATINY FINISH)**
245. **FENTON ORANGE TREE STANDARD FLARED MUG – RED (NICE RED EXAMPLE; AVERAGE DETAIL W/ NICE GOLD HIGHLIGHTS)**
246. **FENTON ORANGE TREE STANDARD FLARED MUG – GREEN (VERY RARE COLOR; DARK AND NICE; IRID. IS TYPICAL SILVERY)**
247. Fenton Orange Tree Standard Flared Mug – Mari./Vaseline (scarce; nice base, base color and irid.)
248. **FENTON ORANGE TREE SHAVING MUG – AMBER (SUPER RARE BASE COLOR; VERY ATTRACTIVE AND NICE)**
249. Fenton Orange Tree Shaving Mug – Blue (nice color and irid.)
250. **9-1/4" FENTON ORANGE TREE FLAT PLATE – BLUE (VERY SCARCE; REALLY NICE BLUE HIGHLIGHTS)**
251. **9-1/4" FENTON CAPTIVE ROSE FLAT PLATE – BLUE (VERY SCARCE; IRID. LOOKS LIKE AN AMYTH. ONE)**
252. Fenton Orange Tree Flared Punch Bowl and Base – Blue (very nice example; nice color and irid.)
253. **FENTON CHERRY CIRCLES HANDLED ROUND BON BON – GREEN (EXTREMELY RARE COLOR FOR THIS ITEM; SUPER EXAMPLE)**
254. **9-1/4" FENTON LITTLE FISHES FTD. FLARED BOWL – BLUE (VERY DESIRABLE; SUPER COLOR, IRID. AND DETAIL; NICE)**
255. **8-3/4" FENTON DRAGON AND LOTUS 8 RUFFLED BOWL – BLUE (RARE, BELIEVE IT OR NOT... BECAUSE THIS EXAMPLE IS SUPER RADIUM)**
256. 9" Fenton Dragon and Lotus Bowl w/ 3 In 1 Edge – Mari. (scarce shape for this item)
257. Fenton Butterfly and Berry Large Ftd. Ruffled Master Berry Bowl – Green (scarce w/ really nice color and irid.; very attractive)
258. Fenton Butterfly and Berry Ind. Ftd. Round Berry Bowl – Green (nice color and irid.)
259. 6" Fenton Lotus and Poinsettia 6 Ruffled Sauce – Mari. (not footed!! a very scarce variation)
260. **FENTON HORSEHEAD MEDALLION FTD. ROSE BOWL – POWDER BLUE / MARI. (RARE AND VERY DIFFICULT TO OBTAIN; REALLY DIFFERENT)**
261. **FENTON HORSEHEAD MEDALLION FTD. ROSE BOWL – BLUE (RARE AND DESIRABLE; NICE COLOR, IRID. AND DETAIL)**
262. Fenton Horsehead Medallion Ftd. J.I.P. Bowl – Dk. Mari. (nice color and detail)
263. Fenton Horsehead Medallion Ftd. Nut Bowl – Mari. (nice color and detail)
264. Fenton Horsehead Medallion Ftd. Rose. Bowl – Mari. (nice color and detail)
265. **FENTON HORSEHEAD MEDALLION FTD. ROSE BOWL – MARI. / VASELINE (RARE BASE COLOR AND IRID.; REALLY NICE EXAMPLE)**

- _____ 266. **FENTON PERSIAN MEDALLION HANDLED 4 SIDED BON BON – MARI. / AQUA (RARE BASE COLOR; ATTRACTIVE)**
- _____ 267. Fenton Reisian Medallion Handled 4 Sided Bon Bon – Mari./ Vaseline (very scarce; nice color and irid.)
- _____ 268. **FENTON TWO ROW LARGE SIZE OPEN EDGE 6 RUFFLED HAT – ICE GREEN (VERY SCARCE AND VERY ATTRACTIVE; SUPER)**
- _____ 269. Fenton Vintage Grape Ftd. Fern Dish – Blue (an absolutely super example w/ blue highlights)
- _____ 270. Fenton Bouquet Bulbous Handled Water Pitcher – Dk. Mari. (scarce and desirable item w/ great color and irid.)
- _____ 271. 10-1/2" Fenton Stag and Holly Large Ball Ftd. 8 Ruffled Bowl – Blue (scarce; nice satiny finish)
- _____ 272. 11" Fenton Stag and Holly Large Ball Ftd. 8 Ruffled Bowl – Mari. (nice color and satiny irid.)
- _____ 273. **FENTON STAG AND HOLLY LARGE BALL FTD. ROSE BOWL – DK. MARI. (VERY SCARCE AND DESIRABLE SHAPE; NICE COLOR AND IRID.)**
- _____ 274. Fenton Mikado Large Ice Cream Shaped Stemmed Compote – Blue (rare and beautiful item that has a buffed spot on the edge)
- _____ 275. **FENTON FREESIA / DRAPE INTERIOR TANKARD WATER PITCHER – MARI. / CLEAR (VERY SCARCE ITEM W/ EXCELLENT DECORATION)**
- _____ 276. Fenton Magnolia and Drape Bulbous Handled Water Pitcher – Mari. (nice example w/ excellent decoration)
- _____ 277. Fenton Vintage Grape Small Size Epergne Base Only – Amyth. (tough part if ya need it)
- _____ 278. Fenton Vintage Grape Small Size Epergne Lily Only – Mari. (another part that's tough when ya need one)
- _____ 279. 7-1/2" Fenton Peacock and Grape Spatula Ftd. Ice Cream Shaped Bowl – Mari. (nice color)
- _____ 280. 7-3/4" Fenton Peacock and Grape Spatula Ftd. 8 Ruffled Bowl – Powder Blue (odd shade of blue w/ no marigold overlay)
- _____ 281. Fenton Pastel Swan – Pink
- _____ 282. Fenton Orange Tree Handled Shaving Mug – Blue (nice color and detail)
- _____ 283. Fenton Orange Tree Punch Base Only – Mari. (scarce part)
- _____ 284. 9" Fenton Orange Tree 8 Ruffled Bowl – Blue (satiny irid.)
- _____ 285. **FENTON ORANGE TREE FTD. HATPIN HOLDER – BLUE (PERFECT EXAMPLE W/ SUPER BLUE HIGHLIGHTS)**
- _____ 286. **FENTON LATTICE AND GRAPE TANKARD WATER PITCHER – BLUE (PERFECT W/ NICE BLUE HIGHLIGHTS AND DETAIL)**
- _____ 287. Fenton Lattice and Grape Tumbler – Blue (pretty nice example)
- _____ 288. 6-1/2" Fenton 1911 Atlantic City Elks Ice Cream Shaped Bowl – Blue (rare and attractive example; has buffed spot on edge)
- _____ 289. Fenton Perfume Bottle and Stopper – Mari. (stretch era item; can't get the top off)
- _____ 290. **FENTON STRETCH 1/4-LB. COVERED CANDY JAR – WISTERIA (CATHEDRAL SHAPED; A BEAUTIFUL EXAMPLE)**
- _____ 291. **FENTON PERSIAN MEDALLION SMALL STEMMED 6 RUFFLED COMPOTE – AMYTH. (VERY RARE SHAPE AND COLOR FOR THIS ITEM)**
- _____ 292. Fenton Scotch Thistle Stemmed Ruffled Crimped Edge Compote – Green (scarce; nice shape and color)
- _____ 293. Fenton Birds and Cherries Stemmed 6 Ruffled Compote – Green (attractive item)
- _____ 294. Fenton Persian Medallion Large Stemmed Ruffled Crimped Edge Compote – Mari. (satiny finish)
- _____ 295. **10" FENTON PERSIAN MEDALLION LARGE 6 RUFFLED BOWL – AMYTH. (VERY ATTRACTIVE; LARGE ITEM)**
- _____ 296. 8-3/4" Fenton Lotus and Grape 8 Ruffled Bowl – Green (scarce pattern and color)
- _____ 297. 8-3/4" Fenton Dragon and Lotus Bowl w/ 3 In 1 Edge – Green (rare shape; sorta olive green color)
- _____ 298. 8-1/2"-3/4" Fenton Dragon and Lotus Ice Cream Shaped Bowl – Blue (nice satiny finish)
- _____ 299. 8-1/2"-3/4" Fenton Dragon and Lotus 8 Ruffled Bowl – Dk. Mari. (super, super example; nice)
- _____ 300. **19" TALL x 5" BASE FENTON RUSTIC SWUNG FUNERAL VASE – BLUE (RARE AND VERY DESIRABLE; GREAT COLOR; MAY HAVE A BIT OF PEELING ON EDGE)**
- _____ 301. 19-1/2" Tall x 5" Base Fenton Rustic Swung Funeral Vase – Dk. Mari. (very scarce and attractive; has bruise on base)
- _____ 302. **19-1/2" TALL x 5" BASE FENTON RUSTIC SWUNG FUNERAL VASE – MARI. (PERFECT EXAMPLE; NICE COLOR AND IRID.)**
- _____ 303. 18-1/4" Tall x 5" Base Fenton Rustic Swung Funeral Vase – Odd Amyth. w/ Streaks (extremely rare item even though it's cracked at base and missing one point)
- _____ 304. 10-1/2" Tall Fenton Plume Panels Swung Vase – Blue (nice color and irid.)
- _____ 305. 14" Tall Fenton Plume Panels Swung Vase – Amyth. (never seen one swung this tall; pretty neat)
- _____ 306. 16" Tall Fenton Fine Rib Mid Size Swung Vase – Green (very scarce and looks green as grass)
- _____ 307. 10" Tall Fenton Fine Rib Standard Swung Vase – Green (scarce color for this pattern)
- _____ 308. 9-1/2" Tall Fenton Fine Rib Standard Swung Vase – Amyth. (another scarce item in this color)
- _____ 309. 11-3/4" Tall Fenton April Showers Swung Vase – Blue (nice color and irid.)
- _____ 310. 7-1/2" Tall Fenton April Showers Squatty Swung Vase – Green (nice color and size)
- _____ 311. Fenton Horsehead Medallion Ftd. Rose Bowl – Mari. (nice color and detail)
- _____ 312. 7" Fenton Peacock Tail 6 Ruffled Bowl w/ Horlacher Adv. – Green (nice satiny finish; very scarce)
- _____ 313. Fenton Peacock Tail 6 Ruffled Hat w/ General Furniture Adv. – Green (nice example; satiny)
- _____ 314. 6" Fenton Peacock Tail Tri-Cornered Sauce – Green (nice color and shape)
- _____ 315. **9-1/2" FENTON PEACOCK AND GRAPE FLAT PLATE – MARI. (RARE AND DESIRABLE W/ SILVERY IRID.)**
- _____ 316. **FENTON BLACKBERRY SPRAY CRIMPED EDGE J.I.P. HAT – RED / AMBERINA (SCARCE W/ A SATINY FINISH)**
- _____ 317. **FENTON TWO ROW OPEN EDGE 6 RUFFLED HAT – RED (SCARCE; NICE COLOR AND IRID.; BRIGHT ITEM)**
- _____ 318. Fenton Two Row Open Edge J.I.P. Hat – Red (nice item but cracked)
- _____ 319. 7-1/2" Fenton Leaf Chain Flat Plate – Blue (scarce w/ a satiny finish)
- _____ 320. 9" Fenton Captive Rose 6 Ruffled Bowl – Blue (super example; irid. looks green)
- _____ 321. 9" Fenton Captive Rose 6 Ruffled Bowl – Green (really nice example; nice irid.)
- _____ 322. **9" FENTON PEACOCK AND GRAPE 8 RUFFLED BOWL – AMYTH. W/ STREAKS (RARE AND UNUSUAL BASE COLOR; NICE IRID.)**
- _____ 323. 9" Fenton Feather Stitch 8 Ruffled Bowl – Mari. (very scarce pattern; nice color and irid.)
- _____ 324. 9-1/2" Fenton Chrysanthemum Bowl w/ 3 In 1 Edge – Mari. (scarce shape for this pattern)
- _____ 325. Fenton Illusion 2 Sided Handled Car Tray – Mari. (scarce pattern; satiny irid.)
- _____ 326. 6" Fenton Little Flowers Ice Cream Shaped Sauce – Amyth. (odd amythest; satiny)

FOR THE RESULTS OF THIS OR ANY BURNS AUCTION SERVICE AUCTION SEND A S.A.S.E. AND \$3.00 (INCLUDE NAME OR DATE OF AUCTION) TO:

EMMA TILTON
P.O. BOX 273 • GNADENHUTTEN, OH 44629



BURNS
 AUCTION SERVICE
 P.O. BOX 608 • BATH, NEW YORK 14810

First Class Mail
 U.S. Postage
 PAID
 Eugene, Oregon
 Permit No. 305

**Carnival Glass
 Auction**
Friday, November 12, 1999
4:00 P.M.
 Preview: 12:00 Noon

