

BURNS

AUCTION SERVICE

Mid-Atlantic Carnival Glass Jamboree Auction

**Friday & Saturday
October 22 & 23, 1999**

**Friday: Auction 6:30 P.M.
Preview 3:00 P.M. to 6:30 P.M.
(Lots 1-195)**

**Saturday: Auction 9:00 A.M.
Preview 8:00 A.M. to 9:00 A.M.
(Lots 196-end)**

at

**The Venice Inn
431 Dual Highway (U.S. Route 40)
Hagerstown, Maryland 21740
(301) 733-0830 or 1 (800) 2-Venice**

I'm just pleased as punch!!! Now this year's Mid-Atlantic Carnival Glass Jamboree Auction is a Barn Burner. We are pleased to present to you the collection of Mr. and Mrs. Wayne Christie from Arlington, Virginia.

I've known these folks for ages and Wayne was always looking to find himself a good plate or two. Well, now all those plates (and the rest) are making their journey to Hagerstown to find new homes.

There are rarities, popular items, and some great color and iridescence to be found here. If you haven't been to one of our auctions lately, you won't want to miss this one...Hope to see ya there!

The Venice Inn of Hagerstown, Maryland will host the event. It's located on U.S. Route 40 (Dual Highway) just on the east side of downtown. We've had a number of functions held here and we're sure everyone should have a great time.

The auction will be held in conjunction with the Mid-Atlantic Carnival Glass Jamboree which will run from Thursday, October 21 through the Saturday evening banquet on the 23rd. There's sure to be plenty to do.

For reservations, you may call The Venice Inn direct at (301) 733-0830 or 1 (800) 2-Venice and for further information on the Jamboree, call Bill or Sharon Mizell at (301) 384-8952.

Mail bids, e-mail bids, phone bids, etc. are due by Tuesday, October 19, 1999. Maryland state sales tax in effect.

CHECK OUT BURNS AUCTION SERVICE ON THE WEB!

Visit our new Web site for information on upcoming auctions, complete auction listings and photos of auction highlights. You can e-mail your bids or requests for information.

<http://zeus.kspress.com/woodland/burnsauction> e-mail: brnzauctsv@aol.com

BURNS AUCTION SERVICE

Tom Burns
P.O. Box 608
Bath, New York 14810
(607) 776-7942

Bill Richards
44 Water St., Poland, OH 44514
(330) 757-2001
FAX (330)-757-4917

Bill Richards, III
2253 Country Lane
Poland, OH 44514
(330) 755-2620

Mail Bids honored under the following conditions.

1. No deposit required, Bidders will take full responsibility to honor any and all bids we execute for them. Payment in full plus postage and handling required after notification and before we ship any item to them.
2. Items are bid on in perfect condition with average or above average iridescence OR as listed in the brochures. Bids will not be carried out when damage on an item has been found during the auction. **PEOPLE PRESENT AT AUCTION ARE RESPONSIBLE FOR FINDING ANY PINHEADS, WEAR, SPOTTINESS, MANUFACTURER'S DEFECTS OR ANY OTHER MINOR FLAWS, ETC.**
3. Successful bidders will be notified by collect call from the auctioneer (**so be sure to include the phone number**).
4. Phone inquiries about the glass or any other questions are welcome.
5. If you have some other person at the auction bidding for you, they must pay for the item before taking it.
6. Any terms or conditions given the day of the auction will supersede any previously published information.
7. Mail, e-mail, fax and phone bids are due by Tuesday, October 19, 1999.

- | | |
|---|---|
| _____ 1. (2) 7" – 8" Fostoria Brocaded Palms Handled Flat Plates – Pink (nice; selling choice) | _____ 13. N'wood Stretch Wide Panel Candy Base Whimsey Turned in Rose Bowl – Opaque Blue (scarce item; nice color) |
| _____ 2. Fostoria Brocaded Palms, 2 Sided, Nappy – Ice Green | _____ 14. 9-1/2" N'wood Stretch Plain Flared Console Bowl – Opaque Blue (nice color) |
| _____ 3. Pr. Fostoria Brocaded Palms 3 Ftd. Flared Candlesticks – Pink (scarce pair) | _____ 15. N'WOOD STRETCH CONCAVE DIAMOND TALL TUMBLER AND COASTER – VASELINE (VERY RARE ITEM; THE COASTER MAKES FOR A TOUGH SET) |
| _____ 4. 4-1/2" TALL X 6" DIAMETER FOSTORIA BROCAIDED PALMS STEMMED COMPOTE – PINK (VERY SCARCE ITEM; NICE COLOR AND IRID.) | _____ 16. FENTON STRETCH DOUBLE DOLPHIN FTD. FAN VASE – TANGERINE (VERY SCARCE AND VERY DESIRABLE; SUPER COLOR) |
| _____ 5. Fostoria Brocaded Acorn Lg. Fleur de Lei Handled Cookie Tray – Ice Blue (scarce; nice color and irid.) | _____ 17. Pr. Fenton Stretch Squatty Candlesticks – Ice Green (nice pair) |
| _____ 6. Fostoria Brocaded Acorn Lg. 3 Ftd. Centerpiece Bowl – Ice Blue (very scarce; nice color and irid.) | _____ 18. 5-1/2" Tall Imperial Jewels Turned in Cylinder Vase, signed w/ Iron Cross – Mari. (nice irid.) |
| _____ 7. Fostoria Brocaded Palms 2 Sided Nappy – Ice Blue | _____ 19. 2-1/2" Tall x 5-1/2" Diam. Imperial Stretch Turned in Rose Bowl – Amber (?) (very rare color; plain but different) |
| _____ 8. 7" – 8" Imperial (?) Brocaded "Orchid" Handled Flat Plate – Pink (scarce pattern; very attractive) | _____ 20. Imperial Stretch Wide Panel Stemmed Sherbert and Underplate – Red (a beautiful set; great color and irid.) |
| _____ 9. 3-1/2" Tall x 5" Diameter Imperial (?) Brocaded "Orchid" Stemmed Compote – Clear (rare; desirable; nice irid.) | _____ 21. Imperial Interior Wide Panel Handled Breakfast Sugar – Red (a very scarce item; dark color and irid.) |
| _____ 10. IMPERIAL (?) BROCAIDED "ORCHID" HANDLED CUP AND (2) SAUCERS – CLEAR (VERY RARE ITEM; HAVEN'T SEEN ONE BEFORE; AND WE HAVE AN EXTRA SAUCER) | _____ 22. 9" Fenton (?) Stretch Plain Flat Plate – Red (there's something about this item; super and unusual) |
| _____ 11. 7" – 7-1/2" Imperial (?) Brocaded "Orchid" 8 Sided Flat Plate – Clear (very rare item) | _____ 23. 8-1/2" M'burg Blackberry Wreath Flared Bowl – Amyth. (scarce shape; has a sorta radium finish) |
| _____ 12. N'wood Stretch Cupped Rose Bowl w/ Square Tree of Life Base – Celeste Blue (nice color) | _____ 24. 8" M'burg Mayan I.C. Shaped Bowl – Green (scarce; radium and nice) |

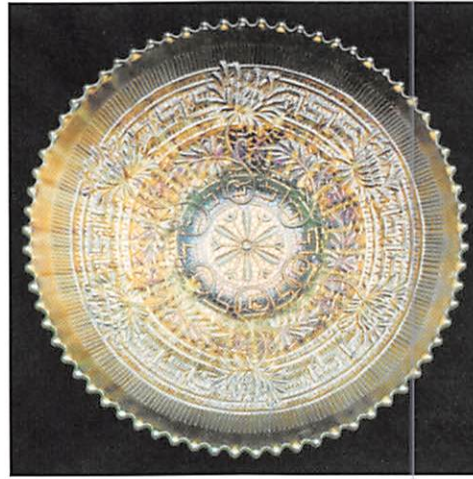
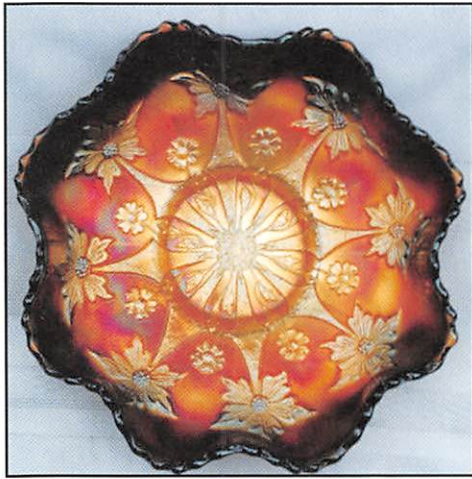
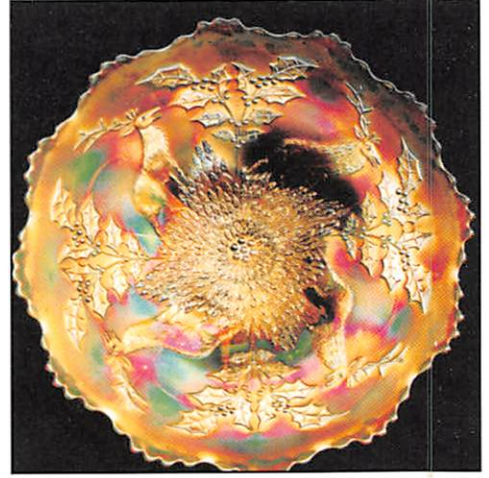
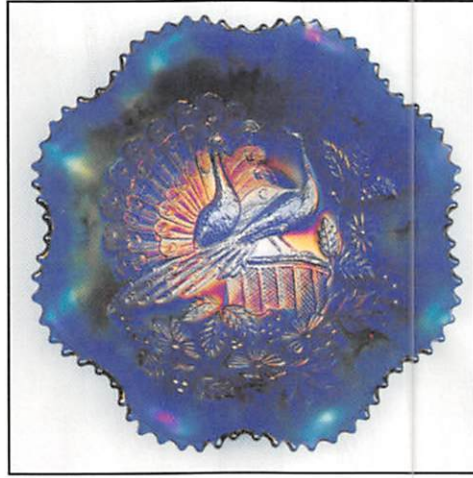
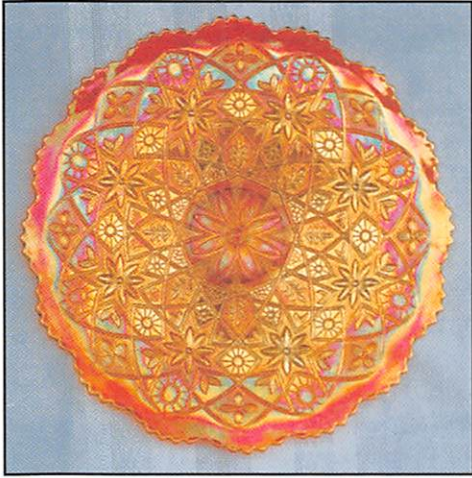
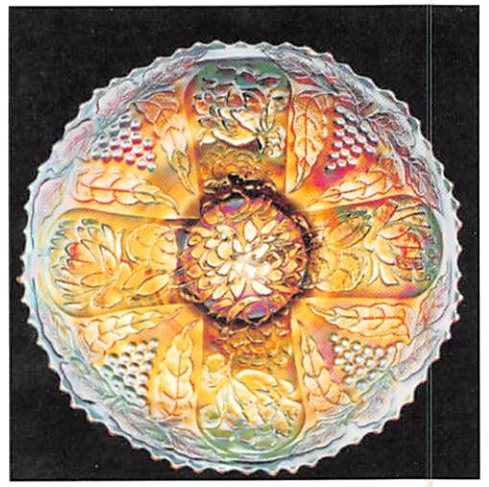
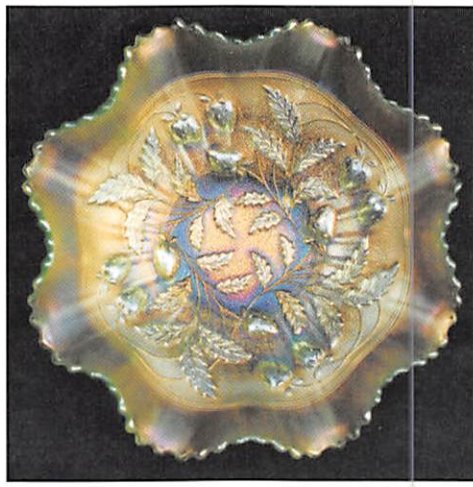
- _____ 25. **M'BURG BERNHEIMER BROS./ MANY STARS 6 RUFFLED BOWL – BLUE (VERY RARE AND EXTREMELY DESIRABLE; GREAT COLOR AND NICE IRID.)**
- _____ 26. **10" M'BURG HANGING CHERRIES LG. 6 RUFFLED BOWL – BLUE (EXTREMELY RARE ITEM; FIRST I'VE SEEN IN THIS SIZE; SUPER DARK BLUE AND GREAT IRID.)**
- _____ 27. **10" – 10-1/2" M'BURG SWIRL HOBNAIL SWUNG VASE – BLUE (EXTREMELY RARE AND A BEAUT; ATTRACTIVE W/ A GREAT RADIUM FINISH; VERY BRIGHT)**
- _____ 28. 10-1/2" – 11" M'burg Swirl Hobnail Swung Vase – Amyth. (very scarce; nice color and irid.)
- _____ 29. **5-3/4" TALL X 5" DIAM. M'BURG COUNTRY KITCHEN (POTPOURRI) FLARED WHIMSEY VASE – MARI. (EXTREMELY RARE ITEM; HAVEN'T SEEN MANY; A SUPER DESIRABLE ITEM)**
- _____ 30. M'burg Hobnail Spitton – Amyth. (rare and desirable; great color and irid. but is buffed on edge)
- _____ 31. M'burg Boutonniere Stemmed 6 Ruffled Compote – Amyth. (a super radium example; perfect)
- _____ 32. **M'BURG LEAF AND LITTLE FLOWERS SQUATTY STEMMED 6 RUFFLED COMPOTE – GREEN (RARE AND DESIRABLE; NICE RADIUM FINISH)**
- _____ 33. M'burg B.P.O.E. Elks Paperweight – Green (extremely rare but has a badly damaged base)
- _____ 34. 7" M'burg Hanging Cherries I.C. Shaped Bowl – Amyth. (scarce w/ a nice satiny finish)
- _____ 35. **6" M'BURG "THE GREAT HOUSE OF ISAAC BENESCH & SONS" 6 RUFFLED BOWL – AMYTH. (EXCELLENT EXAMPLE; GREAT DETAIL AND IRID.)**
- _____ 36. M'burg Diamond Handled Water Pitcher – Amyth. (scarce; satiny/ silvery gold finish)
- _____ 37. (2) M'burg Diamond Tumblers – Amyth. (selling choice; super example and average example)
- _____ 38. (2) M'burg Diamond Tumblers – Mari. (selling choice; nice color and irid.)
- _____ 39. M'burg Diamond Tumbler – Green (nice color and irid.)
- _____ 40. **(4) M'BURG MARILYN TUMBLERS – MARI. (VERY SCARCE ITEMS; SELLING CHOICE)**
- _____ 41. M'burg Holly Sprig 2 Sided Bon Bon w/ Isaac Benesch 54th Anniv. Advert. – Mari. (scarce w/ nice satiny finish)
- _____ 42. M'burg Holly Sprig Deep Oval 2 Handled Bon Bon – Amyth. (radium and a super example)
- _____ 43. M'burg Holly Sprig Deep Oval 2 Handled Bon Bon, odd variation – Amyth. (satiny; but has a different mold)
- _____ 44. M'burg Hanging Cherries Handled Creamer – Green (scarce part; light satiny finish)
- _____ 45. **8-1/2" – 9" M'BURG TROUT AND FLY BOWL W/ 3 IN 1 EDGE – GREEN (VERY DESIRABLE; NICE DETAIL W/ A LIGHT SATINY FINISH)**
- _____ 46. 7-1/2" M'burg Blackberry Wreath 6 Ruffled Bowl – Green (really nice satiny finish)
- _____ 47. 8-1/2" M'burg Grape Wreath Variant 6 Ruffled Bowl – Mari. (radium and nice; very dark)
- _____ 48. 9-1/2" M'burg Whirling Leaves 6 Ruffled Bowl – Amyth. (radium and nice)
- _____ 49. 6" M'burg Cosmos Ice Cream Shaped Bowl – Green (nice radium example)
- _____ 50. 9-1/2" M'burg Nesting Swan 6 Ruffled Bowl – Amyth. (satiny; has a small ding on bird)
- _____ 51. **CAMBRIDGE INVERTED FEATHER HANDLED PUNCH CUP – DK. MARI. (RARE ITEM AND A SUPER EXAMPLE; NICE)**
- _____ 52. Cambridge Inverted Feather Stemmed 6 Ruffled Compote – Mari. (satiny; has only fair mold work)
- _____ 53. Cambridge Double Star Tumbler – Green (nice color and irid.)
- _____ 54. N Acorn Burr Ind. Berry Bowl – Green (nice color and irid.)
- _____ 55. **N LATTICE AND POINSETTIA FTD. RUFFLED BOWL W/ RIBBED EXT. – PURP. (HAS TO BE ONE OF THE BEST EXAMPLES...PERIOD!)**
- _____ 56. **N LATTICE AND POINSETTIA FTD. RUFFLED BOWL W/ RIBBED EXT. – PURP. (HAS TO BE ONE OF THE OTHER BEST EXAMPLES...)**
- _____ 57. N Beaded Cable Ftd. Ruffled Rose Bowl – Aqua Opal. (rare and desirable; a nice example)
- _____ 58. N Beaded Cable Ftd. Ruffled Rose Bowl w/ Floral Int. – Green (rare variation; unusual; nice color and irid.)
- _____ 59. N Beaded Cable Ftd. Ruffled Rose Bowl – Dk. Mari. (super color and irid.)
- _____ 60. **N HEARTS AND FLOWERS FLAT PLATE W/ RIBBED EXT. – WHITE (RARE AND EXTREMELY DESIRABLE; PERFECT W/ A LIGHT GOLDISH IRID.)**
- _____ 61. **N HEARTS AND FLOWERS FLAT PLATE W/ RIBBED EXT. – PURP. (RARE AND VERY DESIRABLE; FLAT W/ BLUE HIGHLIGHTS; REALLY, REALLY NICE)**
- _____ 62. **N HEARTS AND FLOWERS FLAT PLATE W/ RIBBED EXT. – MARI. (RARE, VERY DESIRABLE; NICE COLOR W/ LIGHT MULTI-COLORED IRID.)**
- _____ 63. **N HEARTS AND FLOWERS 6 RUFFLED BOWL W/ RIBBED EXT. – GREEN (VERY RARE AND EXTREMELY DESIRABLE; GREAT COLOR AND IRID.; HAS ONE SHARP POINT)**
- _____ 64. N Hearts and Flowers 6 Ruffled Bowl w/ Ribbed Ext. – Ice Blue (scarce; nice color and irid.; perfect)
- _____ 65. N Hearts and Flowers 6 Ruffled Bowl w/ Ribbed Ext. – White (scarce; nice color and irid.; perfect)
- _____ 66. **N HEARTS AND FLOWERS STEMMED 6 RUFFLED COMPOTE W/ RIBBED EXT. – AQUA OPAL. (RARE AND VERY DESIRABLE; ATTRACTIVE W/ GREAT OPAL.)**
- _____ 67. **N HEARTS AND FLOWERS STEMMED 6 RUFFLED COMPOTE W/ PLAIN EXT. – ICE BLUE (RARE AND VERY DESIRABLE; NICE IRID.; ATTRACTIVE)**
- _____ 68. N Hearts and Flowers Stemmed 6 Ruffled Compote w/ Plain Ext. – White (scarce; nice color and irid.; pretty nice)
- _____ 69. **N HEARTS & FLOWERS STEMMED 6 RUFFLED COMPOTE W/ RIBBED DK. MARI. EXTERIOR – (A SUPER PUMPKIN EXAMPLE; DARK COLOR AND A REAL BEAUT.)**
- _____ 70. **N EMBROIDERED MUMS FLAT PLATE W/ RIBBED EXT. – ICE GREEN (RARE AND VERY DESIRABLE; NICE COLOR W/ LIGHTER IRID.; NICE)**
- _____ 71. **N EMBROIDERED MUMS 8 RUFFLED BOWL W/ RIBBED EXT. – ICE GREEN (VERY RARE AND DESIRABLE; NICE COLOR AND IRID.)**
- _____ 72. N Embroidered Mums 8 Ruffled Bowl w/ Ribbed Ext. – Blue (very scarce; dark blue color w/ multi-colored irid.)
- _____ 73. **N DANDELION HANDLED MUG – AQUA OPAL. (ONE OF THE BETTER EXAMPLES; SUPER COLOR AND IRID.; NICE)**
- _____ 74. **N DANDELION HANDLED MUG – AQUA OPAL. (RARE AND DESIRABLE; A NICE PASTEL EXAMPLE)**
- _____ 75. **N DANDELION HANDLED MUG – GREEN (RARE AND VERY DESIRABLE; DARK COLOR W/ NICE REDDISH IRID.)**
- _____ 76. N Singing Birds Handled Mug – Elec. Blue (very nice example; bright blue irid.)
- _____ 77. N Singing Birds Handled Mug – Green (rare color; has a dark marigold overlay)
- _____ 78. N Singing Birds Handled Mug – Purp. (nice color w/ gold highlights)
- _____ 79. N Singing Birds Handled Mug – Dk. Mari. (nice dark color and irid.)
- _____ 80. **N PEACOCK AT THE FOUNTAIN 7 PC. WATER SET – PURP. (RARE AND DESIRABLE SET W/ SOME SUPER IRID.)**
- _____ 81. **N PEACOCK AT THE FOUNTAIN TUMBLER – WHITE (VERY SCARCE AND DESIRABLE; NICE AND FROSTY)**

82. N PEACOCK AT THE FOUNTAIN 4 PC. TABLE SET – MARI. (VERY SCARCE SET; PERFECT W/ NICE COLOR)
83. N HARVEST POPPY STEMMED 6 RUFFLED COMPOTE – DK. MARI. (ANOTHER PUMPKIN MARIGOLD EXAMPLE; SUPER)
84. N Daisy and Drape Ftd. Vase – White (scarce; nice color and irid.; nice example)
85. N PEACOCKS 8 RUFFLED BOWL W/ RIBBED EXT. – ELEC. BLUE (RARE AND VERY DESIRABLE; SUPER EXAMPLE; IRID. LIGHT ON BIRDS)
86. N PEACOCKS 8 RUFFLED BOWL W/ RIBBED EXT. – AQUA OPAL. (RARE AND VERY DESIRABLE; GREAT IRID. W/ A LIGHT TOUCH OF BUTTERSCOTCH)
87. N PEACOCKS 8 RUFFLED BOWL W/ RIBBED EXT. – AQUA OPAL. (ANOTHER RARE ITEM W/ SUPER PASTEL IRID.; NICE)
88. N PEACOCKS 8 RUFFLED BOWL W/ RIBBED EXT. – WHITE (RARE AND HAS SUPER IRID. AND A FROSTY FINISH)
89. N Peacocks 8 Ruffled Bowl w/ Ribbed Ext. – Mari. (scarce; has odd satiny finish)
90. N PEACOCKS STIPPLED PLATE W/ RIBBED EXT. – BLUE (RARE AND ALWAYS DESIRABLE; HAS A NICE MULTI-COLORED IRID.)
91. N PEACOCKS STIPPLED PLATE W/ RIBBED EXT. – DK. MARI. (VERY SCARCE AND VERY DESIRABLE; HAS NICE MULTI-COLORED IRID.)
92. N PEACOCKS PLATE W/ RIBBED EXT. – PURP. (VERY SCARCE AND DESIRABLE; HAS GOLD IRID. W/ BLUE HIGHLIGHTS)
93. N PEACOCKS PLATE W/ PLAIN EXT. – ICE GREEN (ACTUALLY QUITE AN ATTRACTIVE EXAMPLE; SUPER)
94. N PEACOCKS PLATE W/ RIBBED EXT. – WHITE (VERY SCARCE AND VERY DESIRABLE; HAS WONDERFUL IRID.)
95. N PEACOCKS PLATE W/ RIBBED EXT. – DK. MARI. (VERY SCARCE; NICE COLOR AND IRID.; ATTRACTIVE)
96. N PEACOCK AT THE URN LG. ICE CREAM BOWL – ICE BLUE (VERY SCARCE AND VERY DESIRABLE; SUPER IRID. AND VERY ATTRACTIVE)
97. N PEACOCK AT THE URN IND. ICE CREAM BOWL – ICE BLUE (ONE OF THE BETTER EXAMPLES IF YOU NEED ONE; NICE)
98. N PEACOCK AT THE URN LG. ICE CREAM BOWL – PURP. (QUITE AN ATTRACTIVE EXAMPLE W/ BRIGHT MULTI-COLORED HIGHLIGHTS)
99. (4) N Peacock at the Urn Ind. Ice Cream Bowls – Purp. (selling choice; there is one bright example; the others all match)
100. N IVY HANDLED TOWN PUMP – PURP. (RARE AND DESIRABLE NOVELTY; NICE COLOR AND IRID. AND PERFECT)
101. N POPPY OVAL RUFFLED RELISH TRAY W/ RIBBED EXT. – ICE BLUE OPAL. (A RARE PASTEL ITEM W/ A LIGHT PASTEL IRID.; LOOKS BLUE OPAL.)
102. N Poppy Oval Ruffled Relish Tray w/ Ribbed Ext. – Amyth. (sorta silvery but a rare transparent base color)
103. N RASPBERRY 7 PC. WATER SET – PURP. (ONE OF THE MORE ATTRACTIVE SETS IN THIS PATTERN; NICE)
104. N Raspberry Ftd. Handled Gravy Boat – Purp. (scarce novelty w/ perfect feet)
105. N POPPY SHOW FLAT PLATE – BLUE/ ELEC. BLUE (VERY ATTRACTIVE ITEM W/ RED AND ELEC. BLUE HIGHLIGHTS)
106. N POPPY SHOW FLARED PLATE – PURP. (RARE AND LOOKS TO BE PERFECT; GREAT COLOR AND IRID.)
107. N POPPY SHOW FLARED PLATE – ICE BLUE (RARE ITEM; IRID. IS SILVERY; PERFECT)
108. N ROSE SHOW VARIANT FLARED PLATE W/ RIBBED EXT. – RENNINGER BLUE (RARE AND DESIRABLE ITEM; NICE AVERAGE IRID.; A BIT OUT OF ROUND)
109. N ROSE SHOW FLAT PLATE – PURP. (SUPER EXAMPLE; LOOKS TO BE O.K.; GREAT IRID.)
110. N STRAWBERRY STIPPLED 8 RUFFLED BOWL W/ RIBBED EXT. AND NARROW BASE – RENNINGER BLUE (RARE AND DESIRABLE; NICE BASE COLOR AND SATINY FINISH)
111. N STRAWBERRY STIPPLED 8 RUFFLED BOWL W/ RIBBED EXT. – LIME ICE GREEN (RARE AND DESIRABLE; GREAT BASE COLOR AND IRID.)
112. N Strawberry 8 Ruffled Bowl w/ Basketweave Ext. – Amyth. (satiny finish)
113. N WILD STRAWBERRY HANDGRIP PLATE W/ BASKETWEAVE EXT. – GREEN (VERY SCARCE; HAS NICE BRIGHT REDDISH IRID.)
114. N Wild Strawberry Handgrip Plate w/ Basketweave Ext. – Mari. (scarce; satiny)
115. 6" N WILD STRAWBERRY SMALL HANDGRIP PLATE W/ BASKETWEAVE EXT. – AMYTH. (VERY RARE SIZE FOR THIS ITEM; HAVEN'T SEEN MANY)
116. N WILD STRAWBERRY HANDGRIP PLATE W/ BASKETWEAVE EXT. – PURP. (SUPER EXAMPLE W/ GREAT IRID.)
117. N Strawberry Plate w/ Basketweave Ext. – Green (scarce; irid. a bit light and silvery)
118. N Strawberry Plate w/ Basketweave Ext. – Amyth. (really flat w/ a bronze finish; nice)
119. N STRAWBERRY FLARED PLATE W/ PLAIN EXT. – DK. MARI. (SUPER COLOR AND DARK; VERY ATTRACTIVE)
120. N GOOD LUCK PLATE W/ RIBBED EXT. – DK. MARI. (A RARE AND VERY DESIRABLE ITEM; NICE DARK COLOR AND IRID.)
121. N Good Luck Plate w/ Basketweave Ext. – Purp. (rare and desirable item w/ blue and red highlights)
122. N Good Luck 8 Ruffled Bowl w/ Ribbed Ext. – Mari. (scarce; nice satiny finish)
123. N WISHBONE FTD. PLATE W/ RUFFLES AND RINGS EXT. – PASTEL MARI. (RARE AND VERY NICE; AN ODD BASE COLOR; SUPER)
124. N WISHBONE FTD. PLATE W/ RUFFLES AND RINGS EXT. – DK. MARI. (ANOTHER RARE ITEM; DARK COLOR; ONE EDGE NOT FILLED)
125. N Wishbone Ftd. 8 Ruffled Bowl w/ Ruffles and Rings Ext. – Amyth. (super look w/ bright irid. and a light base color)
126. N Wishbone Ftd. 8 Ruffled Bowl w/ Ruffles and Rings Ext. – Mari. (nice color and satiny)
127. N WREATH OF ROSES STIPPLED 2 HANDLED BON BON W/ BASKETWEAVE EXT. – PURP. (RARE ITEM; NICE COLOR AND IRID.; VERY SCARCE)
128. N Memphis Handled Punch Cup – Ice Blue (nice color and lustre)
129. 11" N Pillar Ribbed Swung Vase – Aqua Opal. (very attractive; has super irid. and perfect feet)
130. N ROUND HANDLED BUSHEL BASKET – AQUA OPAL. (ONE OF THE BETTER EXAMPLES; SUPER IRID.)
131. N ROUND HANDLED BUSHEL BASKET – ICE GREEN (VERY SCARCE; NICE COLOR AND IRID.)
132. N ROUND HANDLED BUSHEL BASKET – SMOKEY VIOLET (VERY RARE AND A VERY DESIRABLE BASE COLOR; UNUSUAL)
133. N ROUND HANDLED BUSHEL BASKET – HOREHOUND (ANOTHER RARE BASE COLOR; UNUSUAL W/ NICE COLOR AND IRID.)
134. N Round Handled Bushel Basket – Purp. (nice color and irid.)

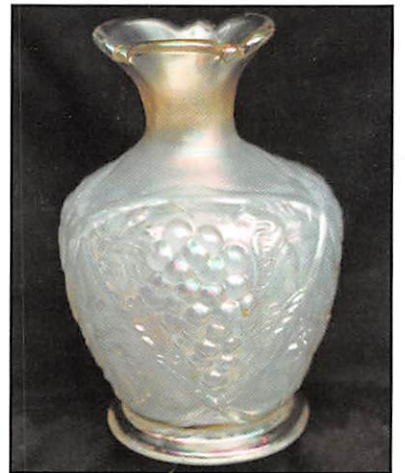
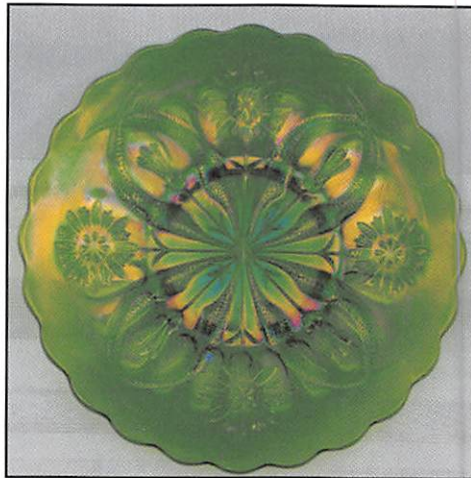
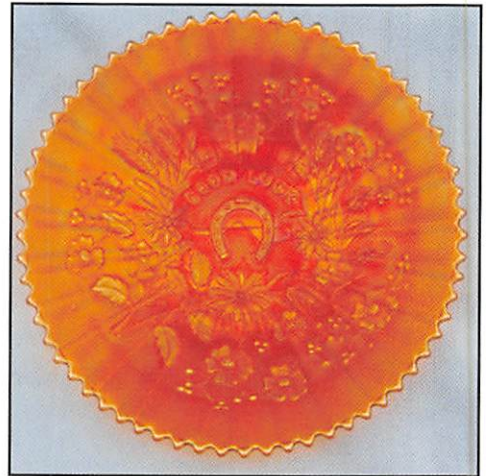
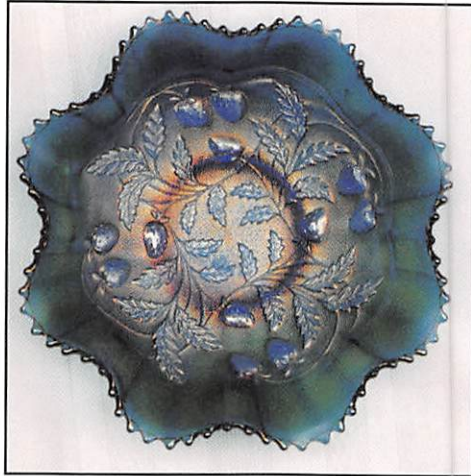
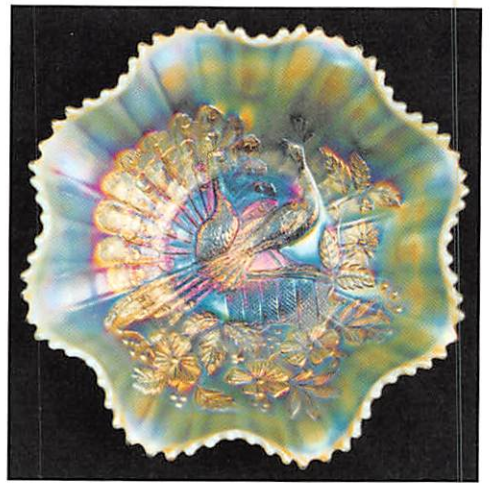
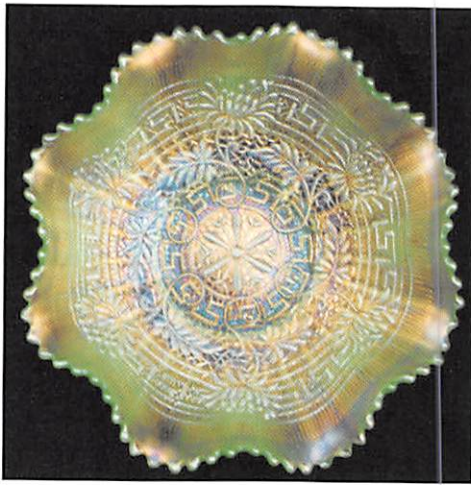
- _____ 135. N Round Handled Bushel Basket – Blue (nice color; scarce)
- _____ 136. N Round Handled Bushel Basket – Dk. Mari. (nice color and irid.; scarce)
- _____ **137. N EIGHT SIDED HANDLED BUSHEL BASKET – GREEN (RARE AND DESIRABLE BASE COLOR; NICE ITEM)**
- _____ 138. N Eight Sided Handled Bushel Basket – Blue (very scarce item in this color; nice)
- _____ 139. N Eight Sided Handled Bushel Basket – White (scarce; nice and frosty)
- _____ 140. N Eight Sided Handled Bushel Basket – Dk. Mari. (scarce; dark color and irid.; really bright)
- _____ **141. N LEAF AND BEADS FTD. ROSE BOWL – AQUA OPAL. (VERY ATTRACTIVE EXAMPLE OF THIS SCARCE ITEM W/ A HINT OF BUTTERSCOTCH)**
- _____ **142. N LEAF AND BEADS FTD. ROSE BOWL – AQUA OPAL. (VERY SCARCE AND DESIRABLE; MORE OF A PASTEL FINISH)**
- _____ 143. N Fine Cut and Roses Ftd. Ruffled Rose Bowl – Amyth. (scarce; perfect feet)
- _____ 144. N Greek Key Tumbler – Dk. Mari. (very scarce and a really nice example)
- _____ **145. 9" N NIPPON FLARED PLATE W/ BASKETWEAVE EXT. – AMYTH. (RARE AND DESIRABLE ITEM W/ A STRONG SATINY FINISH)**
- _____ 146. 9" N Nippon Flared Plate w/ Basketweave Ext. – Lt. Mari. (scarce but has a chip on back on one point)
- _____ **147. N NIPPON BOWL W/ P.C.E. AND RIBBED EXT. – ICE BLUE (SUPER EXAMPLE; VERY ATTRACTIVE)**
- _____ 148. (2) N Wishbone Tumblers – Dk. Mari. (nice color and very scarce; selling choice)
- _____ 149. N Springtime Tumbler – Purp. (very scarce item; nice)
- _____ **150. N BARBELLA TUMBLER – VASELINE (VERY RARE AND VERY DESIRABLE; THIS IS THE BLANK FOR GRAPE AND GOTHIC ARCHES)**
- _____ 151. N Singing Bird Tumbler – Green (bright color w/ light irid.)
- _____ 152. (2) N Dandelion Tumblers – Purp. (super items; selling choice)
- _____ 153. N Oriental Poppy Tumbler – Purp. (nice color and irid.)
- _____ 154. N Oriental Poppy Tumbler – Dk. Mari. (nice color and irid.)
- _____ **155. N THREE FRUITS MEDALLION FTD. RUFFLED BOWL W/ MEANDER EXT. – AQUA OPAL. (RARE AND DESIRABLE; NICE COLOR, IRID. AND OPAL.)**
- _____ **156. N THREE FRUITS DOMED 8 RUFFLED BOWL W/ BASKETWEAVE EXT. – WHITE (VERY SCARCE; VERY NICE COLOR AND IRID.)**
- _____ **157. N THREE FRUITS STIPPLED PLATE W/ RIBBED EXT. – BLACK AMYTH. (CAN'T SEE THROUGH THIS ONE; VERY UNUSUAL; HAS UNUSUAL GOLD HIGHLIGHTS)**
- _____ 158. N Three Fruits Stippled Plate w/ Ribbed Ext. – Dk. Mari. (scarce; nice color and irid.)
- _____ **159. N THREE FRUITS PLATE W/ PLAIN EXT. – PURP. (EXCELLENT EXAMPLE; NICE COLOR AND IRID.)**
- _____ **160. 7-1/2" N FRUITS AND FLOWERS PLATE W/ BASKETWEAVE EXT. – PASTEL MARI. (VERY SCARCE COLOR THAT IS VERY ATTRACTIVE; NICE!)**
- _____ 161. 7-1/2" N Fruits and Flowers 2 Sided Banana Dish w/ Basketweave Ext. – Amyth. (scarce; satiny finish)
- _____ 162. 7-1/2" N Fruits and Flowers Handgrip Plate w/ Basketweave Ext. – Amyth. (scarce; has average irid.)
- _____ 163. N Three Fruits 8 Ruffled Bowl w/ Basketweave Ext. – Amyth. (nice satiny finish)
- _____ 164. N Three Fruits 8 Ruffled Bowl w/ Basketweave Ext. – Green (satiny finish)
- _____ 165. N Three Fruits Flared Plate w/ Basketweave Ext. – Amyth. (very nice example; great irid.)
- _____ 166. (6) N Grape and Gothic Arches Tumblers – Blue (scarce; selling so much each for set)
- _____ 167. N G&C Tri-Cornered Nappy From Punch Cup – Mari. (nice color)
- _____ 168. N G&C Flat Flared Nappy From Punch Cup – Mari. (scarce; nice color)
- _____ 169. 7-1/2" N G&C Handgrip Plate w/ Basketweave Ext. – Amyth. (scarce; nice color and irid.)
- _____ **170. N G&C 8 PC. TABLE SIZE PUNCH SET – PURP. (VERY DESIRABLE; HAS REALLY NICE COLOR AND IRID.)**
- _____ 171. N G&C 7 Pc. Water Set – Purp. (scarce; nice set w/ average color and irid.)
- _____ 172. N G&C 7 Pc. Lg. Ruffled Berry Set w/ Basketweave Ext. – Amyth. (scarce set w/ very nice satiny irid.)
- _____ 173. N G&C Ftd. Banana Boat – Purp. (very scarce w/ super color and irid.)
- _____ 174. N G&C 3 Ftd. Fruit Bowl w/ Straight Sides – Dk. Mari. (very scarce item w/ super color and irid.)
- _____ **175. N G&C PERFUME BOTTLE AND STOPPER – PURP. (RARE AND DESIRABLE; NICE COLOR AND IRID.; SUPER)**
- _____ **176. N G&C PERFUME BOTTLE AND STOPPER – MARI. (RARE AND DESIRABLE; NICE AVERAGE COLOR AND IRID.)**
- _____ **177. N G&C FTD. HATPIN HOLDER – HOREHOUND (VERY RARE BASE COLOR; SUPER ITEM AND PERFECT)**
- _____ 178. N G&C Ftd. Hatpin Holder – Green (very scarce; has an unusual marigold overlay)
- _____ 179. N G&C Cologne Bottle and Stopper – Amyth. (scarce; has nice average satiny irid.)
- _____ **180. N G&C OVAL PIN TRAY – GREEN (VERY SCARCE ITEM; NICE COLOR AND IRID.)**
- _____ 181. N G&C Oval Dresser Tray – Purp. (scarce; nice average color and irid.)
- _____ 182. N G&C Oval Dresser Tray – Mari. (scarce; nice average color and irid.)
- _____ 183. N G&C Covered Powder Jar – Purp. (scarce; nice color and lid is in good shape)
- _____ 184. N G&C Covered Powder Jar – Dk. Mari. (scarce; nice dark color and irid.)
- _____ 185. N G&C Covered Sweetmeat Compote – Purp. (very scarce; really nice color and irid.)
- _____ 186. 6" N G&C Handgrip Plate w/ Basketweave Ext. – Amyth. (scarce; nice color and irid.)
- _____ 187. 7-1/2" N G&C Handgrip Plate w/ Basketweave Ext. – Green (actually quite a nice item; very nice)
- _____ 188. 7-1/2" N G&C 2 Sided Card Tray w/ Basketweave Ext. – Mari. (nice satiny color)
- _____ 189. 7-1/2" N G&C 6 Ruffled Bowl w/ Basketweave Ext. – Dk. Mari. (super color and irid.)
- _____ **190. N G&C VARIANT STIPPLED PLATE W/ RIBBED EXT. – PURP. (RARE; VERY UNUSUAL ITEM; HAS A FEW BURN MARKS)**
- _____ **191. N G&C VARIANT STIPPLED PLATE W/ OLD ROSE DISTILLERY ADVERT. – GREEN (RARE AND DESIRABLE; REALLY NICE COLOR AND IRID.)**
- _____ 192. N G&C 8 Ruffled Bowl w/ Plain Ext. – Purp. (unusual item; silvery near center w/ elec. blue edge)
- _____ 193. N G&C Variant Plate w/ Plain Ext. – Amyth. (satiny finish)
- _____ 194. N G&C Ftd. Plate w/ Meander Ext. – Pastel Mari. (nice color and irid.)
- _____ **195. N G&C HANDLED BON BON W/ BASKETWEAVE EXT. – ELEC. BLUE (SUPER BRIGHT COLOR AND IRID.; SUPER)**

START OF SECOND SESSION

- _____ 196. Imperial 474 Stemmed Goblet – Dk. Mari. (nice color and irid.)
- _____ 197. 4" Tall Imperial 474 Stemmed Claret – Mari. (quite a scarce size; nice color)
- _____ 198. 3-1/2" Tall Imperial Wide Panel Stemmed Wine Glass – Dk. Mari. (rare item w/ nice dark color)
- _____ **199. 3" TALL IMPERIAL WIDE PANEL STEMMED CORDIAL – DK. MARI. (VERY RARE AND DESIRABLE ITEM; NICE SIZE AND COLOR)**
- _____ **200. IMPERIAL CONE AND TIE TUMBLER – PURP. (FIRST ONE OF THESE WE'VE SOLD IN QUITE SOME TIME; VERY NICE ITEM)**
- _____ **201. IMPERIAL FIELDFLOWER TUMBLER – PURP. (RARE W/ NICE COLOR AND IRID.)**

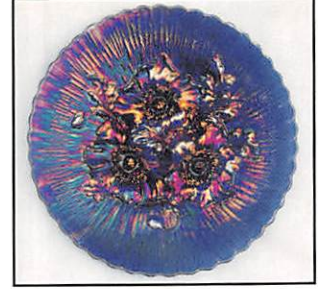
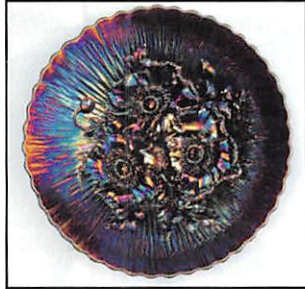


- _____ 202. **IMPERIAL 474 TUMBLER – VIOLET BLUE (VERY RARE BASE COLOR; NICE GOLD HIGHLIGHTS)**
- _____ 203. Imperial Flute Breakfast Sugar and Creamer – Purp. (nice color and irid.; sold as a set)
- _____ 204. Imperial Flute Toothpick Holder – Purp. (super irid.)
- _____ 205. **IMPERIAL OCTAGON 7 PC. WATER SET – PURP. (VERY RARE SET; HAS SMALL PITCHER W/ TANKARD TUMBLERS; MAY HAVE SMALL FLAWS ON TUMBLERS; BUT A REALLY NICE SET)**
- _____ 206. **IMPERIAL DIAMOND LACE 7 PC. WATER SET – PURP. (ABSOLUTELY SUPER EXAMPLE; BRIGHT AND BEAUTIFUL)**
- _____ 207. **IMPERIAL FIELDFLOWER HANDLED WATER PITCHER – SMOKE (VERY RARE BASE COLOR; SUPER IRID.; REALLY NICE)**
- _____ 208. Imperial Crab Claw 7 Pc. Water Set – Dk. Mari. (super set; nice color and well matched)
- _____ 209. Imperial 474 7 Pc. Lg. Size Water Set – Dk. Mari. (another nice well matched set; nice)
- _____ 210. **9-1/4" IMPERIAL EMBOSSED SCROLL FLAT PLATE – PURP. (VERY SCARCE AND VERY DESIRABLE; TYPICAL SUPER IRID.)**
- _____ 211. Imperial Embossed Scroll Stemmed 8 Ruffled Compote – Purp. (super example; very attractive)
- _____ 212. 9" Imperial Star of David 8 Ruffled Bowl – Purp. (super example; great color and irid.)
- _____ 213. **IMPERIAL GRAPE WATER CARAFE – PURP. (HAS TO BE THE FINEST EXAMPLE I'VE SEEN; BEYOND SUPER!)**
- _____ 214. **6-1/2" IMPERIAL GRAPE FLAT PLATE – PURP. (VERY SCARCE AND DESIRABLE; SUPER IRID.)**
- _____ 215. **9" IMPERIAL OPEN ROSE FLAT PLATE – AMBER (ONE OF THE BETTER EXAMPLES; FLAT W/ BLUE HIGHLIGHTS)**
- _____ 216. 8" Imperial Heavy Grape Flat Plate – Purp. (super bright multi-colored irid.; nice)
- _____ 217. 8" Imperial Heavy Grape Flat Plate – Lime Green (Helios irid.; odd base color that glows)
- _____ 218. 6-1/2" Imperial Grape Flat Plate – Helios Green (scarce; sorta lime green base color)
- _____ 219. 9" Imperial Embossed Scroll Flat Plate – Helios Green (average color)
- _____ 220. **10-1/4" IMPERIAL CHRYSANTHEMUM CHOP PLATE – SIGNED NUART – MARI. (VERY RARE ITEM TO FIND IN THIS COLOR AND TO ALSO BE SIGNED; VERY NICE)**
- _____ 221. **10-1/2" IMPERIAL HATTIE CHOP PLATE – DK. MARI. (RARE AND VERY DESIRABLE; DARK COLOR AND GREAT IRID.)**
- _____ 222. **10" – 10-1/2" IMPERIAL ACANTHUS CHOP PLATE – SMOKE (SUPER EXAMPLE; FLAT W/ GREAT IRID.)**
- _____ 223. 10"-10-1/2" Imperial Acanthus Chop Plate – Mari. (another excellent example; very nice)
- _____ 224. 9" Imperial Smooth Rays Flat Plate – Smoke (actually a scarce item; nice)
- _____ 225. **9" – 9-1/2" IMPERIAL PANSY LOW RUFFLED PLATE – SMOKE (SUPER EXAMPLE W/ BRIGHT IRID.)**
- _____ 226. Imperial Soda Gold 3 Pc. Console Set – Smoke (nice set; well matched w/ nice irid.)
- _____ 227. Imperial Star Medallion Celery Vase – Smoke (super color; an excellent example)
- _____ 228. 6-1/2" Imperial 3 in 1 Flat Plate – Mari. (scarce w/ satiny finish)
- _____ 229. Unusual Imperial Wide Panel Stemmed Goblet – Souvenir – Pen Mar, Pa. – Dk. Mari. (unusual item; dark and very scarce)
- _____ 230. **PAIR IMPERIAL SIX SIDED CANDLESTICKS – DK. MARI. (VERY RARE AND WELL MATCHED SET; NICE)**
- _____ 231. 16" – 17" Tall Imperial Morning Glory Swung Funeral Vase – Dk. Mari. (very scarce; nice dark color and irid.)
- _____ 232. 8-1/2" Tall x 5" Wide Imperial Interior Wide Panel Swung Vase – Mari./ Milk Glass (excellent color w/ great irid.)
- _____ 233. 6-1/2" Tall x 4" Wide Imperial Interior Wide Panel Swung Vase – Mari./ Milk Glass (same as above; has a great size to it)
- _____ 234. Jenkins Sunflower and Diamonds Flared Cylinder Vase – Dk. Mari. (super dark color and irid.)
- _____ 235. **U.S. GLASS PALM BEACH WHIMSEY BULBOUS PINCHED IN VASE – WHITE (VERY RARE AND VERY DESIRABLE; RARE SHAPE AND HAS SUPER IRID.)**
- _____ 236. **U.S. GLASS COSMOS AND CANE 7 PC. TANKARD WATER SET – WHITE (EXTREMELY RARE AND COMPLETE SET; SUPER FROSTY W/ SUPER IRID.)**
- _____ 237. **U.S. GLASS COSMOS AND CANE 8 RUFFLED DOMED COMPOTE – WHITE (VERY SCARCE SHAPE TO THIS COMPOTE; SUPER IRID.)**
- _____ 238. U.S. Glass Cosmos and Cane Tumbler w/ J.R. Milner Lynchburg, Va. Advert. – Honey Amber (rare item; haven't sold one in a while; nice)
- _____ 239. U.S. Glass Cosmos and Cane Tumbler – Honey Amber (scarce item; perfect)
- _____ 240. **9" – 9-1/2" EUROPEAN PODS AND POSIES FLARED PLATE – EMERALD GREEN (VERY DESIRABLE; HAS SUPER BRIGHT GREEN COLOR AND IRID.)**
- _____ 241. **9-1/2" – 10" JENKINS FIELD THISTLE FLAT CHOP PLATE – LT. MARI. (RARE AND DESIRABLE; LIGHT COLOR AND IRID.)**
- _____ 242. European "Ivy Scroll" Spittoon/ Vase – Mari. (unusual item; not really sure of pattern)
- _____ 243. Westmoreland Little Bo Peep Handled Mug – Mari. (scarce w/ average color and irid.)
- _____ 244. Westmoreland Estate Handled Mug – Lt. Mari. (scarce item)
- _____ 245. **8-1/2" – 9" WESTMORELAND DAISY WREATH 6 RUFFLED BOWL – BLUE OPAL. (SCARCE W/ NICE OPAL.; ATTRACTIVE)**
- _____ 246. 9" Westmoreland Daisy Wreath 6 Ruffled Bowl – Mari./ Milk Glass (scarce; nice color and irid.)
- _____ 247. 8-1/2" – 9" Westmoreland Daisy Wreath Deep Flared Bowl – Dk. Mari./ Milk Glass (scarce w/ really nice dark color)
- _____ 248. Westmoreland Pearly Dots Stemmed 6 Ruffled Compote – P. Opal. (scarce, nice opal.)
- _____ 249. Westmoreland Corinth Jack in the Pulpit Vase – Mari./ Milk Glass (scarce; nice color)
- _____ 250. Westmoreland Little Beads Small 6 Ruffled Compote – Blue Opal. (cute item in a really tough color)
- _____ 251. Westmoreland Little Beads Small Flared Compote – Dk. P. Opal. (super example; nice dark satiny finish)
- _____ 252. 8" Westmoreland Scales I.C. Shaped Bowl – Mari./ Milk Glass (scarce w/ average color)
- _____ 253. Westmoreland Louisa Ftd. Rose Bowl – Green (nice color and irid.)
- _____ 254. Turbin Hatpin – Dark (scarce; great irid.)
- _____ 255. **12-3/4" DUGAN PERSIAN GARDEN CHOP PLATE – AMYTH. (SUPER EXAMPLE W/ SUPER IRID.; A REALLY GREAT ITEM; HAS A CHIP OFF ONE POINT...OH WELL!)**
- _____ 256. 7-1/2" Dugan Persian Garden Plate w/ Pool of Pearls Ext. – White (scarce; super irid.)
- _____ 257. 7" Dugan Persian Garden Plate w/ Basketweave Ext. – Mari. (nice satiny finish)
- _____ 258. 6-1/2" Dugan Persian Garden Deep 8 Ruffled and Berry Bowl – Dk. P. Opal. (super opal.; very attractive)
- _____ 259. Dugan Harvest Flower Tumbler – Mari. (scarce; sorta dark color)
- _____ 260. **10-1/2" DUGAN WISHBONE AND SPADES CHOP PLATE – PURP. (SUPER EXAMPLE W/ BRIGHT MULTI-COLORED IRID.)**
- _____ 261. 6-1/2" Dugan Wishbone and Spades Plate w/ Exterior – Purp. (very scarce; nice item w/ gold irid.)



- _____ 262. 6" Dugan Wishbone and Spades 6 Ruffled Sauce – P. Opal. (scarce; nice color and opal.)
- _____ 263. 7-1/2" Dugan Fishscale Flared Plate w/ Tight Crimped Edge – Purp. (very scarce; super color and irid.)
- _____ 264. **DUGAN AMARYLIS FLAT PLATE FROM COMPOTE – DK. MARI. (RARE AND VERY DESIRABLE ITEM; HAS A NICE MULTI-COLORED SATINY FINISH)**
- _____ 265. 9-1/2" DUGAN APPLE BLOSSOM TWIG FLAT PLATE W/ PLAIN EDGE AND BSKT. EXT. – DK. P. OPAL. (RARE ITEM; FLAT W/ SUPER OPAL. AND MARI. OVERLAY)
- _____ 266. 6-1/2" – 7" DUGAN SKI STAR PLATE W/TIGHT CRIMPED EDGE – P. OPAL. (VERY SCARCE; EXCELLENT OPAL. AND MARIGOLD OVERLAY)
- _____ 267. 6" DUGAN CHERRIES/ JEWELLED HEART EXT. PLATE W/ TIGHT CRIMPED EDGE – P. OPAL. (CUTE ITEM; SCARCE W/ GREAT OPAL.)
- _____ 268. Dugan Beaded Shell Handled Mug – Dk. Mari. (very scarce w/ a nice satiny finish)
- _____ 269. Dugan Beaded Shell Handled Mug – Blue (scarce; nice color)
- _____ 270. 10" – 11" DUGAN PODS AND POSIES CHOP PLATE W/ SODA GOLD EXT. – P. OPAL. (RARE AND DESIRABLE; ATTRACTIVE ITEM W/ A SATINY FINISH)
- _____ 271. 10-1/2" – 11" DUGAN PODS AND POSIES CHOP PLATE W/ PLAIN EXT. – P. OPAL. (ANOTHER ATTRACTIVE ITEM; NICE COLOR AND OPAL.)
- _____ 272. 6-1/2" Dugan Pods and Posies Plate w/ Basketweave Ext. – P. Opal. (very scarce w/ nice opal. and satiny irid.)
- _____ 273. 6-3/4" Dugan Pods and Posies Plate w/ Plain Ext. – P. Opal. (scarce w/ nice opal. and irid.)
- _____ 274. Dugan Honeycomb Rose Bowl – P. Opal. (scarce item w/ nice opal.)
- _____ 275. **DUGAN JEWELLED HEART HANDLED WATER PITCHER – DK. MARI. (RARE AND DESIRABLE ITEM; UNDERPRICED AND HAS NICE COLOR AND IRID.)**
- _____ 276. Dugan Jeweled Heart Tumbler – Dk. Mari. (super, super color and irid.; really dark)
- _____ 277. Dugan Heron Handled Mug – Purp. (very scarce item w/ average color and irid.)
- _____ 278. Dugan Fisherman's Handled Mug – Purp. (scarce w/ nice color and irid.)
- _____ 279. **DUGAN FLORAL AND GRAPE BULBOUS HANDLED WATER PITCHER – AMYTH. (SCARCE; AN EXCELLENT EXAMPLE W/ A RADIUM FINISH)**
- _____ 280. **DUGAN BUTTERFLY AND TULIP 4 FTD. SQUARE BOWL – PURP. (RARE AND DESIRABLE; NICE INTERIOR IRID.; GETS A BIT SILVERY ON OUTSIDE EDGE)**
- _____ 281. 8-1/2" – 9" Dugan Fanciful Low Ruffled Bowl/ Plate – Purp. (satiny; very scarce w/ nice color)
- _____ 282. **9" DUGAN WINDFLOWER FLAT PLATE – BLUE (SCARCE ITEM; NICE COLOR AND IRID.)**
- _____ 283. Dugan Leaf Ray Handled Ruffled Happy – Purp. (super irid.; really nice)
- _____ 284. Dugan Circle Scroll Tri-Cornered Hat – Purp. (scarce w/ nice interior irid.)
- _____ 285. **9-1/2" DUGAN ROUND UP LOW RUFFLED PLATE – PURP. (ABSOLUTELY SUPER EXAMPLE W/ GREAT IRID. THAT'S REALLY BRIGHT)**
- _____ 286. 8-1/2" – 9" Dugan Round Up Deep Flared Bowl/ Plate – Purp. (very scarce; nice color and irid.)
- _____ 287. 8-1/2" – 9" Dugan Round Up Low Ruffled Bowl/ Plate – White (scarce; nice color and irid.)
- _____ 288. 8-1/2" – 9" Dugan Apple Blossom Low Ruffled Plate – White (very scarce w/ nice color and irid.)
- _____ 289. 8-1/2" – 9" Dugan Fanciful Low Ruffled Plate – White (very scarce w/ nice color and irid.)
- _____ 290. **DUGAN QUESTION MARK/ GEORGIA PEACH AND PUZZLE STEMMED PLATE – WHITE (RARE AND DESIRABLE; NICE COLOR AND IRID.)**
- _____ 291. 8-1/2" – 9" Dugan Fanciful Low Round Bowl/ Plate – White (very scarce; nice color and irid.)
- _____ 292. Dugan Constellation Stemmed Ruffled Compote – White (very scarce; really nice color and irid.)
- _____ 293. 9-1/2" Dugan Garden Path Variant Lg. 6 Ruffled Bowl – P. Opal. (very scarce; nice detail and opal.)
- _____ 294. **DUGAN FISHNET SINGLE LILY EPERGNE W/T.C.E. – P. OPAL. (VERY SCARCE AND ATTRACTIVE; NICE OPAL. AND DARK IRID.)**
- _____ 295. Dugan Flowers and Frames Domed Tri-Cornered Crimped Edge Bowl – P. Opal. (rare shape for this item; great color and irid.)
- _____ 296. Dugan Many Fruits Handled Punch Cup – Purp. (super color)
- _____ 297. Fenton Vintage Grape Handled 2 Sided Card Tray – Amyth. (nice color)
- _____ 298. Fenton Stag and Holly Lg. Ball Ftd. Deep 8 Ruffled Bowl – Mari. (satiny finish)
- _____ 299. Fenton Flowers Ftd. Rose Bowl – Dk. Mari. (nice color)
- _____ 300. **FENTON "SOUVENIR OF J.N. LEDFORD COMPANY – COOLEEMEE, N.C."/ HEART & VINE FLAT PLATE – DK. DK. MARI. (WHATTA PLATE! ABSOLUTELY FANTASTIC ITEM; PUMPKIN COLOR AND GREAT IRID.; A SUPER, SUPER PIECE)**
- _____ 301. FENTON "COMPLIMENTS OF SPECTOR'S DEPT. STORE"/ HEART AND VINE PLATE – MARI. (RARE AND DESIRABLE; AVERAGE COLOR AND IRID.)
- _____ 302. 9" FENTON HEARTS AND VINE FLAT PLATE – BLUE (RARE AND DESIRABLE; NICE BLUE HIGHLIGHTS AND FLAT)
- _____ 303. **6" FENTON "EAT PARADISE SODAS" FLAT ADVERTISING PLATE – AMYTH. (RARE AND DESIRABLE; NICE DETAIL AND IRID.)**
- _____ 304. Fenton Butterflies 2 Handled 4 Sided Bon Bon – Amyth. (nice color and irid.)
- _____ 305. 9" FENTON RIBBON TIE LOW PLATE W/ 3 IN 1 EDGE – AMYTH. (ACTUALLY QUITE A RARE ITEM; MOST YOU SEE ARE IN BLUE)
- _____ 306. 9-1/4" FENTON RIBBON TIE LOW PLATE W/ 3 IN 1 EDGE – BLUE (VERY SCARCE W/ REALLY NICE COLOR)
- _____ 307. 9" Fenton Persian Medallion Flat Plate – Blue (very scarce and desirable w/ typical silvery irid.)
- _____ 308. 7-1/2" FENTON PERSIAN MEDALLION FLAT PLATE – AMYTH. (A VERY RARE AND DIFFICULT ITEM TO LOCATE; HAS NICE GOLD IRID.)
- _____ 309. FENTON PERSIAN MEDALLION 2 HANDLED 4 SIDED BON BON – RED/ AMBERINA (RARE AND DESIRABLE; NICE BASE COLOR W/ DARK IRID.)
- _____ 310. 9-3/4" – 10" FENTON LITTLE FLOWERS LG. 8 RUFFLED BOWL – RED/ AMBERINA (RARE AND VERY DESIRABLE; NICE IMPRESSIVE ITEM W/ A SATINY FINISH)
- _____ 311. 7-3/4" FENTON DRAGON AND LOTUS I.C. SHAPED BOWL – RED (A BRIGHT RED ITEM W/ A LIGHT GOLD IRID.; REALLY RED)
- _____ 312. 9" FENTON HOLLY 8 RUFFLED BOWL – RED/ AMBERINA (RARE AND DESIRABLE; NICE SATINY IRID.; PRETTY GOOD ITEM)
- _____ 313. Fenton Holly 4 Sided Hat Shape – Amberina (odd satiny finish; scarce)
- _____ 314. 5-1/2" FENTON STIPPLED RAYS DEEP ROUND SAUCE – RED (VERY SCARCE; NICE DARK RED COLOR)
- _____ 315. 6-3/4" FENTON G&C ICE CREAM SHAPED BOWL – RED (AN EXCELLENT EXAMPLE; DARK COLOR W/ A NICE SATINY FINISH)
- _____ 316. FENTON TWO ROW OPEN EDGE 6 RUFFLED HAT – RED (SCARCE; A NICE EXAMPLE THAT LOOKS RED)
- _____ 317. Fenton Two Row Open Edge 6 Ruffled Hat – Mari./ Vaseline (scarce; attractive base color and lustre)

- _____ 318. Fenton Two Row Open Edge Jack in the Pulpit Hat – Mari./Vaseline (scarce; attractive base color and shape)
- _____ 319. Fenton Two Row Open Edge 4 Sided Hat – Blue (satiny finish)
- _____ **320. 7-1/2" FENTON BLACKBERRY TWO ROW OPEN EDGE FLARED PLATE – BLUE (EXTREMELY RARE ITEM W/ EXCELLENT IRID.; A PERFECT BEAUTY)**
- _____ 321. Fenton Two Row Open Edge Jack in the Pulpit Hat – Amber (a rare base color that's very attractive)
- _____ 322. Fenton Two Row Open Edge 2 Sided Hat w/ Brand – Wilmington Del. Advertising – Lt. Mari. (scarce; very light in color)
- _____ **323. FENTON TWO ROW OPEN EDGE 4 SIDED HAT – ICE GREEN (RARE AND DESIRABLE; NICE SHAPE AND GREAT IRID.)**
- _____ **324. 6-1/4" – 6-1/2" FENTON TWO ROW OPEN EDGE ICE CREAM SHAPED BOWL – CELESTE BLUE (RARE AND DESIRABLE; NICE DARK COLOR AND IRID.)**
- _____ **325. FENTON APPLE TREE 6 PC. BULBOUS WATER SET – BLUE (AN EXTREMELY RARE SET W/ GREAT COLOR AND IRID.; AN UNUSUAL CHANCE FOR A SUPER SET)**
- _____ 326. Fenton Lattice and Grape Tumbler – Elec. Blue (absolutely super bright color and irid.)
- _____ 327. Fenton Bouquet Tumbler – Blue (very scarce and an attractive example)
- _____ 328. Fenton Fentonia Tumbler – Blue (scarce; nice color and irid.)
- _____ 329. Fenton Butterfly and Fern Tumbler w/ Manuf. Ground Base – Amyth. (nice color and irid.; nice detail)
- _____ **330. FENTON FLORAL AND GRAPE TUMBLER – GREEN (RARE AND DESIRABLE; HAS A BRIGHT GREEN BASE COLOR; REALLY NICE)**
- _____ **331. FENTON STRAWBERRY SCROLL TUMBLER – DK. MARI. (RARE ITEM; NICE COLOR AND IRID.; GETTIN' TOUGH)**
- _____ 332. Fenton Milady Tumbler – Dk. Mari. (scarce; nice color and irid.)
- _____ 333. Fenton Ten Mums Tumbler – Mari. (scarce w/ average color and irid.)
- _____ 334. Fenton Orange Tree Standard Flared Handled Mug – Amber (very rare base color; a very nice example)
- _____ **335. 9" FENTON DRAGON AND STRAWBERRY LG. ICE CREAM BOWL – BLUE (RARE AND VERY DESIRABLE; HAS AN ELEC. BLUE TYPE FINISH)**
- _____ **336. 8-1/4" FENTON DRAGON AND LOTUS BOWL W/ ODD 3 IN 1 EDGE – ICE GREEN OPAL. (RARE AND VERY DESIRABLE ITEM W/ A GREAT SHAPE AND GREAT IRID.)**
- _____ **337. 8-1/2" FENTON DRAGON AND LOTUS BOWL W/ ODD 3 IN 1 EDGE – P. OPAL. (ANOTHER EXAMPLE W/ GREAT COLOR AND IRID. IN A REALLY NICE SHAPE)**
- _____ 338. 8-1/4" Fenton Dragon and Lotus I.C. Shaped Bowl – Blue (nice blue highlights)
- _____ 339. 9-1/2" Fenton Captive Rose Flat Plate – Blue (scarce and desirable; has silvery/ gold highlights)
- _____ **340. 9-1/2" FENTON PEACOCK AT THE URN FLAT PLATE – BLUE (RARE AND DESIRABLE; HAS RED AND BLUE HIGHLIGHTS)**
- _____ 341. 9-1/4" Fenton Peacock at the Urn Flat Plate – Lt. Mari. (scarce; average color and irid.)
- _____ **342. 9-1/2" TALL FENTON FINE RIB SWUNG VASE – RED (RARE AND LOOKS RED; A VERY ATTRACTIVE ITEM)**
- _____ 343. 9" Tall Fenton Fine Rib Swung Vase – Mari./Vaseline (scarce; nice color and irid.)
- _____ 344. 14-1/2" Tall Fenton Rustic Mid Size Swung Vase – Green (nice lustre; very attractive)
- _____ **345. 18-1/4" FENTON RUSTIC SWUNG FUNERAL VASE – BLUE (RARE AND GETTING TOUGHER TO FIND; VERY ATTRACTIVE)**
- _____ 346. 9" Fenton Rustic Standard Vase w/ Swing T.C.E. – Green (nice shape and satiny finish)
- _____ 347. 10-1/4" Fenton April Showers Swung Vase – Blue (nice color and irid.)
- _____ 348. 10-1/4" Fenton April Showers Swung Vase – Amyth. (nice color and irid.)
- _____ 349. 10-3/4" Fenton Knotted Beads Swung Vase – Blue (scarce; nice color and irid.)
- _____ **350. 11-1/4" FENTON 4 PILLAR SWUNG VASE W/ HOWARD FURNITURE ADVERTISING – GREEN (VERY SCARCE; GREAT LUSTRE AND DESIRABLE)**
- _____ 351. 7" Fenton Knotted Beads Squatty Swung Vase w/ T.C.E. – Blue (neat shape and very desirable)
- _____ 352. 8-1/2" Fenton Knotted Beads Swung Vase w/ T.C.E. – Mari. (scarce; nice color and irid.)
- _____ 353. Fenton Iris Stemmed 6 Ruffled Compote – Amyth. (nice color and irid.)
- _____ 354. Fenton Mikado Lg. Stemmed 8 Ruffled Compote – Mari. (nice average example)
- _____ **355. 9-3/4" FENTON HOLLY FLAT PLATE – AMYTH. (RARE AND DESIRABLE; REALLY NICE EVEN SATINY IRID.)**
- _____ 356. 9-3/4" – 10" Fenton Holly Flat Plate – White (super irid.; nice and bright w/ a frosty finish)
- _____ 357. 9-3/4" Fenton Holly Flat Plate – Mari. (scarce; really flat w/ a dark satiny finish)
- _____ 358. 9" Fenton Holly 8 Ruffled Bowl – P. Opal. (very rare item; but has one chipped point and flaw)
- _____ **359. FENTON HOLLY COLLAR BASED ROSE BOWL – BLUE (RARE ITEM AND PROBABLY ONE OF THE BETTER EXAMPLES; VERY ATTRACTIVE)**
- _____ **360. FENTON HOLLY STEMMED 6 RUFFLED COMPOTE – WHITE (RARE AND VERY DESIRABLE ITEM; IRID. IS LIGHT BUT IS NICE AND FROSTY)**
- _____ **361. FENTON CAPTIVE ROSE STEMMED 6 RUFFLED COMPOTE – WHITE (SCARCE ITEM; FROSTY W/ EXCELLENT IRID.)**
- _____ 362. Fenton Lattice and Grape 7 Pc. Tankard Water Set – Mari. (nice color and complete)
- _____ 363. 9-1/4" Fenton Pearly Dots Bowl w/ 3 in 1 Edge – Mari./Vaseline (scarce base color)
- _____ 364. Fenton Stag and Holly Spatula Ftd. 8 Ruffled Bowl – Amyth. (very scarce color w/ a satiny finish)
- _____ **365. 11-3/4" FENTON STAG AND HOLLY BALL FTD. CHOP PLATE – DK. MARI. (VERY RARE AND DESIRABLE; NICE IRID. W/ GREAT DETAIL AND COLOR)**
- _____ **366. 8-1/2"-8-3/4" FENTON PEACOCK AND GRAPE SPATULA FTD. PLATE – GREEN (RARE AND DESIRABLE; NICE COLOR W/ SATINY FINISH)**
- _____ 367. 7-1/2" Fenton Peacock and Grape Spatula Ftd. 8 Ruffled Bowl – Green (looks like the plate above; satiny)
- _____ **368. 8-3/4" FENTON PEACOCK AND GRAPE 8 RUFFLED BOWL – BLACK AMYTH. (A VERY SCARCE AND DESIRABLE BASE COLOR; HAS SATINY FINISH)**
- _____ 369. 9-1/2" Fenton Peacock and Grape Flat Plate – Mari. (very scarce; nice color; irid. is light)
- _____ **370. 9-1/2" FENTON LOTUS AND GRAPE FLAT PLATE – DK. MARI. (A VERY RARE ITEM; NICE DETAIL AND COLOR; IRID. A BIT LIGHT ON EDGE)**
- _____ 371. 9-1/2" Fenton Leaf Chain Flat Plate – Clamb. (scarce; nice irid.)
- _____ **372. 7-1/2" FENTON HORSEHEAD MEDALLION FLAT PLATE – DK. MARI. (HAS TO BE ONE OF THE BETTER EXAMPLES; GREAT DETAIL AND COLOR)**
- _____ 373. 7" Fenton Horsehead Medallion 6 Ruffled Bowl – Amyth. (rare base color w/ average irid.)
- _____ 374. Fenton Horsehead Medallion Ftd. Rose Bowl – Mari. (nice color and irid.)
- _____ **375. 6-1/2" FENTON SAILBOATS FLAT PLATE – BLUE (RARE; FLAT AND DESIRABLE; GREAT DETAIL; HAS SLIGHT ROUGHNESS ON 2 POINTS)**
- _____ **376. 6-1/2" FENTON SAILBOATS FLAT PLATE – DK. MARI. (RARE AND DESIRABLE; EXCELLENT COLOR AND DETAIL)**



BURNS
AUCTION SERVICE
 P.O. BOX 608 • BATH, NEW YORK 14810

First Class Mail
 U.S. Postage
 PAID
 Eugene, Oregon
 Permit No. 305

**Mid-Atlantic
 Carnival Glass
 Jamboree Auction**

**Friday & Saturday
 October 22 & 23, 1999**

Friday: Auction 6:30 P.M., Preview: 3:00 P.M. to 6:30 P.M.
 (Lots 1-195)
 Saturday: Auction 9:00 A.M., Preview 8:00 A.M. to 9:00 A.M.
 (Lots 196-end)

