



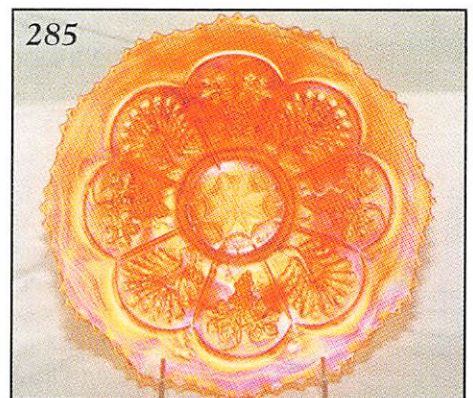
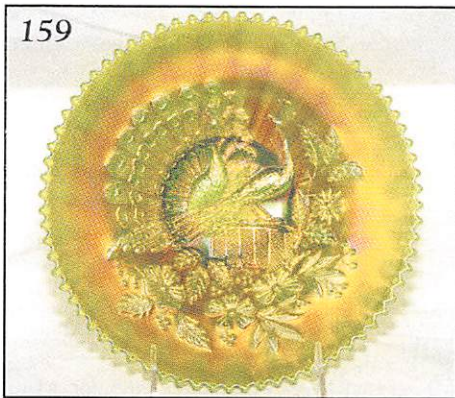
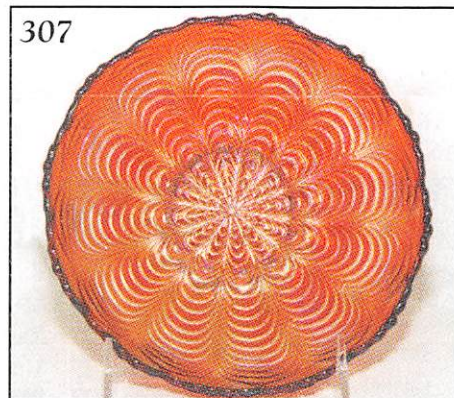
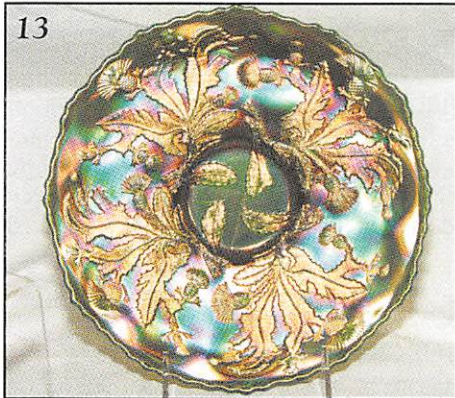
AIR CAPITAL CARNIVAL GLASS CONVENTION AUCTION

☛ Saturday, October 16, 1999 - 9:30 a.m.

☛ Held at Holiday Inn • 5500 West Kellogg • Wichita, Kansas



Reservations 800-255-6484



Mickey Reichel Antique & Auction L.C.

Office: 660-882-5292 • Res: 660-882-5283



Direct e-mail: mreichel@undata.com

NEW WEB SITE ON: <http://www.woodsland.com/carnivalglass>



Holiday Inn • 5500 West Kellogg St. • Wichita, Kansas
Reservations 800-255-6484

Air Capital Convention Information: Contact Don Kime - 316-733-8424
Preview: Friday 6:00 p.m. • Saturday 8:00 a.m. • CASH or CHECK ONLY

NO BUYERS PREMIUM

Auction Consists of Rarity, Great Irid. and Variety

WRITE IN BIDS: If you are unable to attend the auction, we will be happy to accept absentee bids which must be received by **THURSDAY, OCTOBER 7, 1999.** Don't Delay.

FOR AUCTION PRICE RESULTS: Send \$3.00 and Large S.A.S.E. to 516 Third Street, Boonville, MO 65233-1536

PLEASE NOTE: There is a \$5 handling charge for each successful bid which will be added to the selling price for all write-in bids. This is in addition to the cost of postage, insurance and packing. Your write-in bid will be entered just as if you are present and bidding. Successful bidders will be notified in 1 to 3 days by the auctioneer (so be sure to include your phone number). Direct mail bids to Auctioneer **Mickey Reichel, 516 Third Street, Boonville, MO 65233-1536.** Terms: Cash or Check accepted with proper I.D. and Social Security Number and References. Announcements made day of the auction supercede all printed material. Not Responsible for Accidents or Sold Items.

No return on any items once they leave the Auction Center (No Exceptions).****

Call for additional information: 660-882-5292 days or 660-882-5283 evenings.

FAX: 660-882-5292 (evening hours start FAX transmission after beep)

MAIL BIDS: Items are bid on in perfect condition with average or above iridescence OR as listed in the brochures. Bids will not be carried out when damage on an item has been found during the auction.

PEOPLE PRESENT AT AUCTION ARE RESPONSIBLE FOR FINDING ANY PINHEADS, WEAR, SPOTTINESS, MANUFACTURER'S DEFECTS OR ANY OTHER MINOR FLAWS, ETC.

NOTE: Read each line, as we have accentuated the type of no particular piece, all are special.

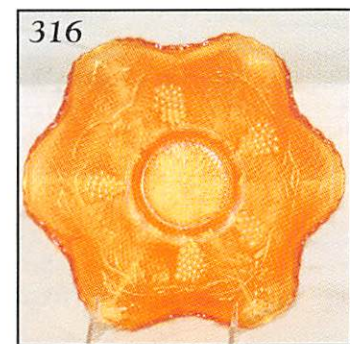
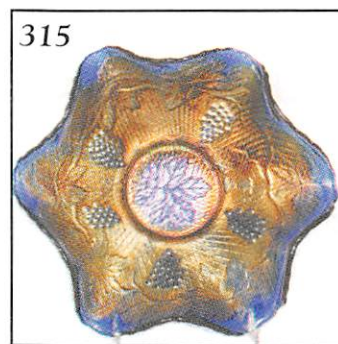
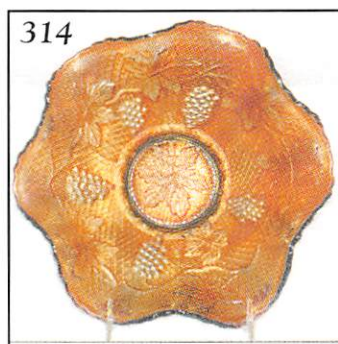
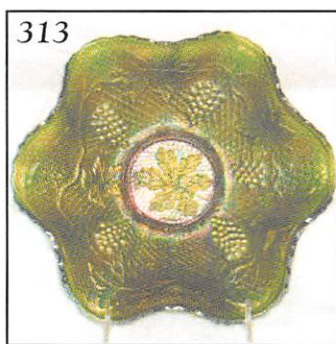
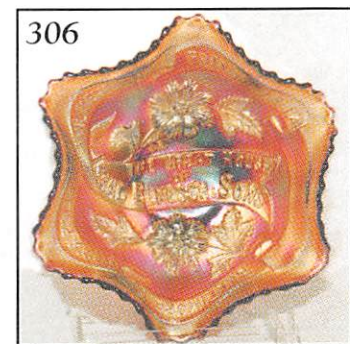
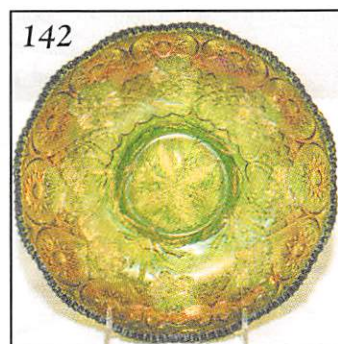
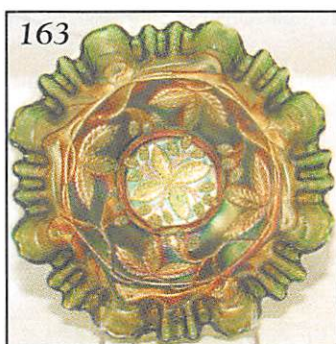
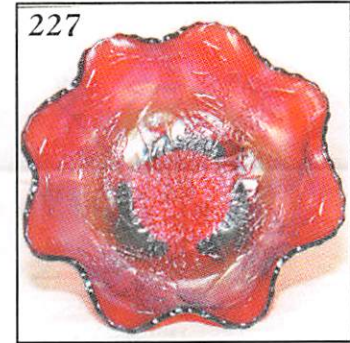
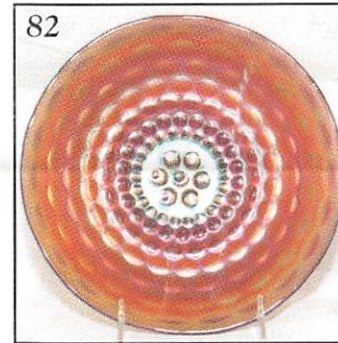
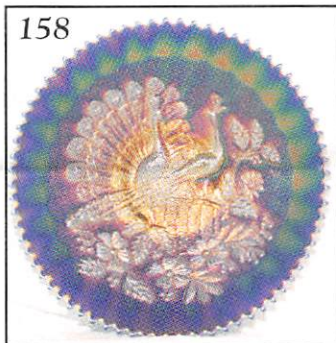
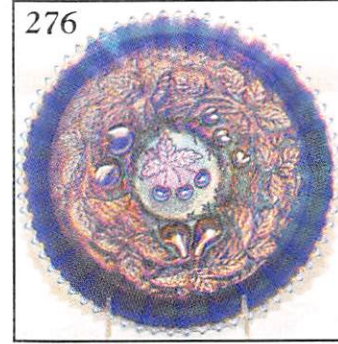
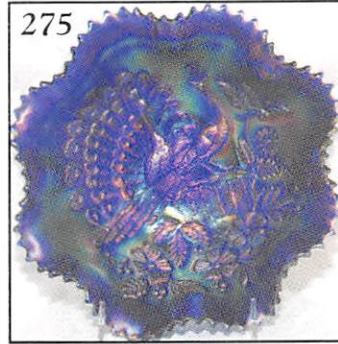
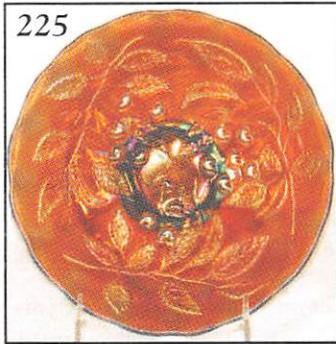
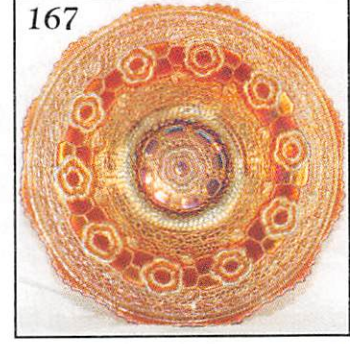
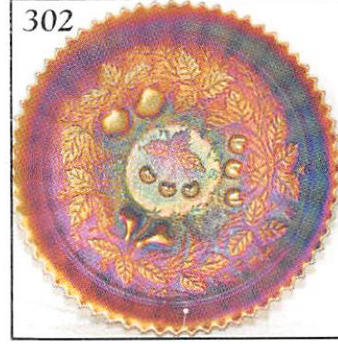
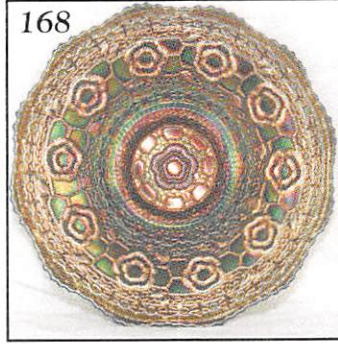
THANK YOU FOR ATTENDING TODAY

- | | | | |
|-------|---|-------|---|
| _____ | 1. Lav. - 6-Ruffle 5½", 2 Row, O.E. Basket | _____ | 19. Rare P - Heron Mug - Radium |
| _____ | 2. Aqua - 6-Ruffle 5¼", 2 Row, O.E. Basket | _____ | 20. M - Sterling Overlay Fan Vase |
| _____ | 3. Saph. - 6-Ruffle 5¼", 2 Row, O.E. Basket | _____ | 21. Radium M - Moon Print Tumbler - Rare |
| _____ | 4. BA - 6-Ruffle 5½", 2 Row, O.E. Basket | _____ | 22. Multi A - Grape & Cable Cologne Bottle |
| _____ | 5. W - 6-Ruffle, 5½", 2 Row, O. E. Basket | _____ | 23. PM - Grape & Cable Candlesticks - 2 x S |
| _____ | 6. I.G. Vas. - 6-Ruffle, 5¼", 2 Row, O.E. Basket | _____ | 24. Super P - Elec. N Grape & Cable - BW - 9¼" Plate |
| _____ | 7. M - Blackberry 6-Ruffle, 2 Row, O.E. Basket | _____ | 25. P - 7½" Scarce N Grape & Cable Leaf Center Plate |
| _____ | 8. Blue - Blackberry 6-Ruffle, 2 Row, O.E. Basket | _____ | 26. G - N Grape & Cable Candlestick - Silvery |
| _____ | 9. G - Blackberry 6-Ruffle, 2 Row, O.E. Basket | _____ | 27. P - Multi-Irid - Grape & Cable Dresser Tray |
| _____ | 10. Smokey Amber - Blackberry, 6¼", 2 Row, O.E. Basket - Most Unusual Color | _____ | 28. P - N Grape & Cable Cov. Powder Dish - Extra Nice |
| _____ | 11. Vas. - Blackberry 6½", 6-Ruffle, 2 Row, O.E. Basket | _____ | 29. A - N Grape & Cable Sweetmeat Compote w/lid |
| _____ | 12. Vas. - 8" Rd. Deep Imp. Open Rose Bowl | _____ | 30. Pow. B - 7¼" 8-Ruffle Fenton Acorn Bowl - Very Pretty |
| _____ | 13. G - Rare 9¼" Fenton Thistle Plate - Super | _____ | 31. Rare Lime, Marigold Overlay - 4½" Coin Dot Rose Bowl |
| _____ | 14. P - Imp. 7½", 8-Ruffle Scroll Embossed Bowl - File Ext. | _____ | 32. Amber - Leaf Swirl Westmoreland Compote - Most Attractive |
| _____ | 15. M - Radium Mary Ann 2 hld. Vase | _____ | 33. P - 7", 6-ruffle, Dugan Bells & Beads Bowl - Sou. of Lititz, PA |
| _____ | 16. Scarce Dugan B - Beaded Shell Mug | _____ | 34. B - Curved Star, Cathedral, Ruffled Compote - 5¼" Dia. - Radium |
| _____ | 17. Rare M - Fishermans Mug | | |
| _____ | 18. Deep P - Fishermans Mug | | |

- _____ 35. **M - Cathedral Chalice - Beautiful Example**
- _____ 36. P - Beautiful Multi Elec. N Stippled Dandelion Mug - Base Crack
- _____ 37. **PO - Soutache 9", Dome Base, 6-Ruffle Bowl**
- _____ 38. Beautiful A - Fenton Waterlily & Cattails, Thistle Banana Bowl
- _____ 39. **P - Dugan 10 1/2" Sq. 8-Ruffle Heavy Grape Bowl - Rare Beauty**
- _____ 40. A - Ftd. 9 1/2" Sq. Deep Grape Arbor Fruit Bowl
- _____ 41. **G - Imp. 12" Ripple Mid-Size Vase - 4" Base - 6 3/4" Top - Radium**
- _____ 42. M - Pumpkin N 7" Thin Rib Vase - 3 1/2" Base, 4 3/4" Top - Beauty
- _____ 43. **Rare I.G. - N 10" Tree Trunk Vase - 3 1/2" Base, 3 1/2" Top**
- _____ 44. M - Mlbg. 5 1/2" I.C.S. Blackberry Wreath Radium Bowl - Cutey
- _____ 45. **G - Mlbg. 10 1/2" Low 6-Ruffle Blackberry Wreath Bowl**
- _____ 46. G - Mlbg. Collar base, 6-Ruffle 10" Fleur de Lis Bowl - Scarce
- _____ 47. **M - 8 1/2", 6-Ruffle Mlbg. Radium Big Fish Bowl - Big Demand**
- _____ 48. A - Mlbg. 9 1/2", 6-Ruffle, Beautiful Whirling Leaves Bowl
- _____ 49. **Scarce G - Mlbg. Cherries Spooner**
- _____ 50. P - N Acorn & Burrs Spooner - Multi-Elec.
- _____ 51. **P - N Acorn & Burrs Creamer - Silver & Gold**
- _____ 52. G - Inverted Feather Cracker Jar - Chip On Lid Base
- _____ 53. **M - 10-Ruffle - Beautiful Radium Brooklyn Bridge Bowl**
- _____ 54. PO - 6", 8-Ruffle, Wishbone & Spades Bowl - Lots of Opal
- _____ 55. **PO - Scarce Ftd. Dugan Fan Gravy Boat - Deep Opal**
- _____ 56. P - Dugan 6 1/2", 7-Ruffle Holly Berry Nappy - Scarce Shape
- _____ 57. **Rare Aqua - 7" N Dia. Points Vt. Vase - Star Base - 3 1/2" Base, 5" Top**
- _____ 58. P - 8" Dugan Vining Twigs Vase - Daisy Inside Bottom - Also Scarce
- _____ 59. **M - Radium Imp. Thumbprint & Oval Vase - Stunning Find**
- _____ 60. AO - N Butterscotch Daisy & Drape - Beautiful Vase
- _____ 61. **M - 5 7/8" Spiraled Dia. Point Vase - Very, Very Scarce**
- _____ 62. M - Flashed, Minnesota Pattern Glass Mug - WOW!!
- _____ 63. **Rare Red - Fenton Fine Rib - 9 3/4" Vase - Gorgeous Find**
- _____ 64. Rare A - Checkerboard Goblet - Tiny Rim Flake
- _____ 65. **B - Rare - Grand Thistle or Wide Panel Thistle Tumbler**
- _____ 66. BA - Vt. Hobnail?? Tumbler - See Photo
- _____ 67. **Ultra Rare Lime Vas. Green - Imp. Octagon Tumbler - Glows - Beauty**
- _____ 68. Elec. B - N Peach Tumbler
- _____ 69. **M - Flashed, 6-Fluted Tumbler, Patt. ?? - See Photo**
- _____ 70. Scarce B - Fentonia Tumbler
- _____ 71. **M - Rare Radium, Decorama Tumbler**
- _____ 72. B - Multi Elec. Blueberry Tumbler
- _____ 73. **Rare Imp. - Clambroth Lustre Rose & Variant Tumbler**
- _____ 74. M - Enameled Pretty Panels N Tumbler - Few & Far Between
- _____ 75. **M - Fenton ICS Peacock at Urn Bowl**
- _____ 76. B - Orange Tree Powder Jar w/lid - A Beauty
- _____ 77. **Frosty White - Fenton 9 1/2" Peacock at the Urn Plate**
- _____ 78. Clam - 9 3/4" Fenton Holly Stretchy Irid. Plate - Few Known
- _____ 79. **Lav. P - Multi Elec, N Ftd. Wishbone Bowl - A Beauty**
- _____ 80. Outstanding G - Elec. N Ftd. Wishbone Bowl - Super
- _____ 81. **A - N Ftd. Wishbone Plate - Great Example**
- _____ 82. A - Rare 8 3/4" Coin Dot Plate
- _____ 83. **Outstanding W - Fanciful Plate - Pinks, Blues, Yellows**
- _____ 84. W - 9 1/2" Poppy Show Plate - Above Average
- _____ 85. **G - N 9" Three Fruits Basketweave Plate - Above Average**
- _____ 86. G - N Strawberry Basketweave Plate - Blues & Pinks
- _____ 87. **M - N PCE Nippon BW. Bowl - Dark w/Pink Highlights**
- _____ 88. P - N Ruffled Nippon Bowl - BW Ext. - Beautiful Example
- _____ 89. **DK. I.B. - PCE N Nippon, BW Ext. Bowl - Lots of Blue Irid.**
- _____ 90. Radium G - N 9" Nippon, BW Ext. Plate - Its a Dandy
- _____ 91. **Beautiful M - N Fruits & Flowers Bon Bon**
- _____ 92. Great Elec. B - N Fruits & Flowers Bon Bon
- _____ 93. **Scarce I.B. - N Fruits & Flowers Bon Bon - Dark Base Glass**
- _____ 94. Cherry Red - Sq. Blackberry Hat - Silver & Gold Irid.
- _____ 95. **Beautiful Aqua - 7 1/2" Low 8-Ruffle Fenton Grape & Cable Collar Base Bowl**
- _____ 96. BA - 9 1/4" Low Ruffle Beautiful Four Flowers Vt. Bowl
- _____ 97. **A - Spat Ftd., ICS, Dragon & Lotus Bowl - Scarce Color**
- _____ 98. G - Collar Base, ICS, Dragon & Lotus Bowl - Great Find
- _____ 99. **Extra Pretty A - Collar Base, Ruffled, Dragon & Lotus Bowl**
- _____ 100. **Ultra Rare Aqua Opal - Collar Base, Ruffled Dragon & Lotus Bowl - Very Pretty**
- _____ 101. **M - Imp. Flute Toothpick - Minor Roughness**
- _____ 102. P - Imp. Flute Toothpick - Minor Roughness

- _____ 103. **G - Imp. Flute Toothpick - Minor Roughness**
- _____ 104. Stretch W - Imp. 10¼" Floral & Optic Ftd. Chop Plate - Super
- _____ 105. **M - Sun Punch Hour Glass Shape Pop Bottle**
- _____ 106. Limeish G - Imp. 7 pc. Lustre Rose Water Set - Glows Under Black Light
- _____ 107. **Very Pretty A - N 7 pc. Singing Birds Water Set**
- _____ 108. AO - Extra Nice - Ruffled Rose Show Bowl
- _____ 109. **P - 6¼" Multi-Elec. Wishbone & Spades, BW Ext., Plate**
- _____ 110. AO - Tips, 3-Fruits Stippled Rib Back Plate - Super Example - Flake Off By Tips
- _____ 111. **P - Imp. Flute #700, 6 pc. Berry Set - Outstanding Rarity**
- _____ 112. M - 6¼" Pine Cone Plate - Plain Ext.
- _____ 113. **Beautiful Scarce Amber - 8" Imp. Heavy Grape Plate**
- _____ 114. P - Scarce 8¾" Plain Interior Lattice & Heart Ext. Plate
- _____ 115. **B - 7½" Persian Med. Plate - Very Scarce Size - Plain Ext.**
- _____ 116. B - 9" Peacock & Grape Plate - Spat. Ftd. - Rare Color
- _____ 117. **Odd G - Imp. Logan Berry Vase - Gold & Pink Irid. - Hot Pattern**
- _____ 118. B - Blackberry 7", 2-Sides Up, O.E. Basket
- _____ 119. **B - 5⅜" N ICS Peacock & Urn Sauce Bowl**
- _____ 120. Rev. Amberina - RARE 5¾", 2-Sides Up, 2 Row, O.E. Basket
- _____ 121. **P - 6¼", 8-Ruffle, Collar Base, Dugan Cherries Bowl - Scarce Shape & Pretty**
- _____ 122. Light M - Vining Twigs, Daisy Int., 3¾" Squatty, 8-Ruffle Vase
- _____ 123. **A - N Strawberry BW Bowl - Ruffled - Nice Example**
- _____ 124. M - Dark N PCE, BW, Grape & Cable Bowl - Scarce Shape
- _____ 125. **W - Ftd., Gold Trim, 9¼" Orange Tree Master Berry Bowl - Beautiful**
- _____ 126. M - N Stippled 3-Fruits Bowl - Ribbed Back - Beautiful Pinks & Golds
- _____ 127. **M - Pumpkin N, Dome Base, 3-Fruits Med. Ruffled Bowl - BW Ext.**
- _____ 128. B - Fenton Dia. & Rib 9½" Vase - Beautiful Scarce Radium
- _____ 129. **G - Coin Spot, 4½"Dia. Rose Bowl - Also Very Scarce**
- _____ 130. P - Ruffled, Rib Back, Ten Mums Bowl - Neat Pattern
- _____ 131. **Beautiful Stretchy PM - N PCE Peacocks Bowl**
- _____ 132. Lav. P - Ruffled N, Extremely Rare, Good Luck Bowl w/Plain Ext. - First Time Offered
- _____ 133. **Beautiful M - 7", 2-Sides Up, 2 Row O.E. Basket - Nice Example - Scarce**
- _____ 134. Vas. - Soft M. Overlay, 2-Sides Up, 2 Row O.E. Basket - Beautiful
- _____ 135. **Saph. - 6", 2-Sides, 2 Row O.E. Basket - Rare**
- _____ 136. BA - 6", 2-Sides, 2 Row O.E. Basket
- _____ 137. **IG - Vaseline, 6", 2-Sides Up, 2 Row O.E. Basket - Glows Great**
- _____ 138. Pinkish - JIP 2-Row O.E. Basket
- _____ 139. **Red - JIP 2-Row O.E. Basket - Beautiful Amber Base**
- _____ 140. G - JIP 2-Row, O.E. Basket - Beautiful Rarity
- _____ 141. **I.B. - 6¼" Rd., 2-Row Bowl - Lg. O.E. - Rare Find**
- _____ 142. G - Mlbg. ICS 9" Collar Base Primrose Bowl - Radium Rarity
- _____ 143. **M - Mlbg.?? - 8½", 8-Ruffle Vintage Grape Leaf Bowl - Radium**
- _____ 144. M - Mlbg.?? - 5¼", 3 in 1, Vintage Grape Leaf Berry Bowl - A & B
- _____ 145. **M - Omnibus Water Pitcher - Rare Find**
- _____ 146. M - Omnibus Tumbler
- _____ 147. **M - 9¼" Rising Sun Pedestal Pitcher - Also Very Scarce**
- _____ 148. M - Rising Sun Tumbler
- _____ 149. **M - 8½" Buzz Saw & File Pitcher - Milk or Mid-Size - Dark & Pretty**
- _____ 150. M - Hobstar & Shield Tumbler - Radium
- _____ 151. **M - Dark Grand Thistle Tumbler**
- _____ 152. Rare G - Fenton 9" Autumn Acorns Plate - Few Known
- _____ 153. **P - N Ruffled, BW, Greek Key Bowl - Multi Irid.**
- _____ 154. G - 8¼" Sq. 8-Ruffle, Beautiful Fenton Vintage Grape Bowl
- _____ 155. **Rare Amber - 8¾" Sq. 8-Ruffle, Beautiful Fenton Vintage Grape Bowl**
- _____ 156. I.G. - Rib Back N Peacocks Plate - Very Beautiful Example
- _____ 157. **A - N Peacocks Rib Back Plate - Multi Elec.**
- _____ 158. B - Stippled N Peacocks Rib Back Plate - Extremely Desirable
- _____ 159. **RARE G - N Peacocks Rib Back Plate - Beautiful Pinks & Golds**
- _____ 160. PM - Ruffled Rib Back N Peacocks Bowl - Soft Pinks & Golds
- _____ 161. **Pumpkin M - Ruffled Rib Back N Peacocks Bowl - Stunning**
- _____ 162. P - Multi Elec., Ruffled Rib Back N Peacocks Bowl - Super
- _____ 163. **Very Scarce G - 8½", 3 in 1, Wild Blackberry Bowl**
- _____ 164. Dark M - ICS, 8½", Plaid Bowl - Neat Pattern
- _____ 165. **Beautiful A - 9" Dugan Apple Blossom Twigs Plate - Elec.**
- _____ 166. Scarce Dugan B - 9" Low 10-Ruffle Plate or Bowl
- _____ 167. **Extra Nice A - 9¼" Scarce Captive Rose Plate**
- _____ 168. B - 9¼" Captive Rose Plate - Above Average
- _____ 169. **Pumpkin M - 8¾", 8-Ruffle, Square, Beautiful Lotus & Grape Bowl**
- _____ 170. B - 8" ICS Lotus & Grape Bowl - Rare Color & Shape
- _____ 171. **G - 8¾", 8-Ruffle, Sq., Beautiful Lotus & Grape Bowl**


- _____ 172. P - Imp. 7" Deep Rd. Grape Bowl - Elec. Radium - Super
- _____ 173. **Lav. P. - 8 1/4" Imp. Grape Ruffled Bowl - Super-Duper!!**
- _____ 174. Rich M - 9" Low Ruffle Imp. Grape Plate - Outstanding Example
- _____ 175. **Rare Smoke - 8" Rd. Imp. Windmill Collar Base Bowl**
- _____ 176. M - Dark Elec. 7 1/2" Rd. Flared Imp. Shell & Sand Bowl - Outstanding
- _____ 177. **Lav. P - 5" Rd. Imp. Flute Nappy - Very Scarce Beautiful Shape**
- _____ 178. Smoke Lav. - Imp. Hobstar Flower Compote - Gorgeous Rarity
- _____ 179. **P - Multi Elec. Imp. Hobstar Flower Compote**
- _____ 180. Beautiful M - Imp. Hobstar Flower Compote
- _____ 181. **Saph. - Fenton Ruffled Peacock & Urn Compote - Beautiful Item**
- _____ 182. Scarce Beautiful White Frosty Fenton - Peacock & Urn Compote
- _____ 183. **A - Elec. Grape Delight Ftd. Crimped Rose Bowl - Outstanding Example**
- _____ 184. BO - Westmoreland, 8 3/4", 6-Ruffle Smooth Ray Bowl - Great Find
- _____ 185. **A - N Spat. Ftd. Rayed Int. Meander Ext. Bowl - One of a Kind??**
- _____ 186. G - Mlbg. Radium, 6", 3 in 1 Blackberry Wreath Bowl
- _____ 187. **M - Mlbg. Radium, 8 1/2", 3 in 1, Grape Vt. Star Center Bowl**
- _____ 188. G - Mlbg. Radium Holly Sprig, Beautiful Deep Bon Bon
- _____ 189. **G - Mlbg. Radium, Rare 6" Tri-Corner Holly Sprig Bowl**
- _____ 190. A - Mlbg. 10" ICS Lg. Mold Peacock & Urn Bowl - Dandy
- _____ 191. **Beautiful W - 9 3/8" Dugan Apple Blossom Twig Plate - Multi Irid.**
- _____ 192. P - Imp. 9" Stippled Open Rose Plate - See Photo - Great
- _____ 193. **Outstanding A - PCE, N, BW, Strawberry Bowl - Fantastic**
- _____ 194. M - 6 3/8" Persian Med. Plain Back Plate - Super Example
- _____ 195. **Very Rare G - 6 1/2" Persian Med. Plain Back Plate - Tough Color**
- _____ 196. Vas. - 11 1/2" Ball Ftd. Sq. 8-Ruffle Stag & Holly Bowl - Lots of Pinks & Blues
- _____ 197. **Amberina - 6" ICS Fenton Stippled Rays Bowl - Little Dandy**
- _____ 198. Great M - Ruffled Rose Show Bowl - Outstanding Example
- _____ 199. **W - 8 3/4", 8-Ruffle Persian Med. Plain Back Bowl - First Seen & Pretty**
- _____ 200. RARE GREEN ORANGE TREE MUG - 3" Base, 3 1/2" Top
- _____ 201. **B - PCE, N Greek Kay Rib Back Bowl - Rare Color & Shape**
- _____ 202. Persian Blue - 8" ICS, Lotus & Grape Bowl - Few Examples Known
- _____ 203. **PM - Ruffled N Good Luck Bowl - BW Back - Very Pretty**
- _____ 204. P - Ruffled N Good Luck Bowl - Rib Back - Multi Elec.
- _____ 205. **Scarce G - Ruffled N Good Luck Bowl, Rib Back - Blues, Greens, Golds**
- _____ 206. PM - PCE, N Good Luck Bowl - Rib Back - Super Pinks & Blues
- _____ 207. **B - Ruffled N Stippled Good Luck Bowl - Rib Back - Scarce w/Stippling**
- _____ 208. P - 9" N Good Luck Plate - BW Ext. - Blues, Purples & Golds
- _____ 209. **M - Dark 9" N Good Luck Vt. Plate - BW Ext. - Rich & Pretty**
- _____ 210. M - 10" ICS N Peacock & Urn Bowl - Pinks, Greens, Yellows
- _____ 211. **W - 10" ICS N Peacock & Urn Bowl - Stretchy Blues & Yellows**
- _____ 212. IB - 10" ICS N Peacock & Urn Bowl - Blues, Silvers, Golds
- _____ 213. **Vas. - 9" Collar Base Ruffled Peacock & Grape Bowl - One of Few Known**
- _____ 214. Vas. - 9" Collar Base, 3 in 1, Fenton Holly Bowl - Scarce
- _____ 215. **Vas. - Lotus & Grape Vt. Bon Bon - Great Find**
- _____ 216. M - 8 3/4" Hand Vase - Right w/Watch
- _____ 217. **M - 5 1/2" Hand Vase - Right w/Watch - Base Chip**
- _____ 218. M - 5 1/2" Hand Vase - Left w/Watch - Pretty
- _____ 219. **M - Crucifix Candle Stick - Very Rare Find**
- _____ 220. M - 9 3/4" Fish Vase - Rare - Signed JAIN
- _____ 221. **M - 6 1/2" Tarpedroo?? Vase**
- _____ 222. M - Frosted 9 1/2" Fish Vase Vt. or Golden Serpent Vase - Rim Roughness - Rare
- _____ 223. **M - 6 3/4" Elephant Vase**
- _____ 224. G - Contemp. Robert Hansen Town Pump & Trough
- _____ 225. **A - Mlbg. 7 1/2" Cherries Plate - 1 1/4" Off Table - Beautiful & Rare**
- _____ 226. M - Goofus Glass Palm Beach Hair Receiver - Most Unusual
- _____ 227. **Red - Rare, Spat. Ftd., Ruffled 7 1/4" Stag & Holly Bowl - Beautiful Silvery Irid.**
- _____ 228. B - 4 1/2" Kittens, 2-Sides Up - Card Tray - 4 Sets of Kittens
- _____ 229. **M - 4 1/2" Kittens, 2-Sides Up - Card Tray - 4 Sets of Kittens**
- _____ 230. Rare B - Stippled N Rib Back Good Luck Plate - Multi Elec.
- _____ 231. **HA - 6" Sq. Headdress Bowl - Cosmos & Cane Ext. - Neat Rarity**
- _____ 232. HA - Beautiful Cosmos & Cane 5" Cream Pitcher
- _____ 233. **HA - Rare Beautiful Cosmos & Cane Butter Dish**
- _____ 234. HA - Cosmos & Cane Spooner
- _____ 235. **Beautiful W - Cosmos & Cane Cream Pitcher - Blues & Yellows**



- _____ 236. Rare W - Cosmos & Cane Butter Dish - Frosty Pinks & Blues
- _____ 237. **I.B. - 9 1/4" Poppy Show Plate - Pink & Gold Highlights - Great Find**
- _____ 238. Rare Aqua - Ftd. Fenton 10" Persian Med., Grape & Cable Fruit Bowl
- _____ 239. **Scarce Green - Ftd. Fenton 10" Persian Med., Grape & Cable Fruit Bowl**
- _____ 240. B - 9 3/4" ICS Fenton Stippled Rays Bowl - Scale Band Ext. - 1 of a Few
- _____ 241. **B - Beautiful Enameled Spring Festival Tumbler**
- _____ 242. Rare Enameled Apple Blossom Tumbler - Super
- _____ 243. **B - Enameled Daisy & Little Flowers Tumbler - Panel Interior**
- _____ 244. B - Enameled Ground Cherries Tumbler - Paneled Interior
- _____ 245. **B - Ultra Rare Four-Seventy-Four Imp. Tumbler**
- _____ 246. Aqua - Ultra Rare Four-Seventy-Four Imp. Tumbler
- _____ 247. **G - N 9 3/4" PCE Wishbone, BW Ext. Bowl - Great Example**
- _____ 248. Aqua Opal - N Ruffled Peacocks Bowl - Beautiful Pastel Example
- _____ 249. **Scarce G - N Ruffled Peacocks Bowl - Super - Some Dye Pigmentation**
- _____ 250. B - 10" Fenton Vintage Chop Plate ? - 2" Off Table - Your Call
- _____ 251. **Beautiful IB - Ruffled Hearts & Flowers Bowl - Pretty Blues & Pinks**
- _____ 252. B - PCE N Hearts & Flowers Bowl - Great Find in Blue
- _____ 253. **M - 3" Squatty African Shield w/Wire Insert - Complete**
- _____ 254. PM - Ruffled N Hearts & Flowers Bowl - Beautiful Blues, Pinks, Golds
- _____ 255. **Dk. B - JIP Horse Medallion Ftd. Bowl**
- _____ 256. Scarce 10 1/2" Smoke Imp. Homestead Chop Plate - Stretch Effect
- _____ 257. **M - Little Bo-Peep Mug - Radium Example**
- _____ 258. M - Collar Base, 8 3/4" Chrysanthemum Windmill Bowl
- _____ 259. **Amber Base Red - 4-Sided Blackberry Spray Hat**
- _____ 260. Amberina - 6-Sided Blackberry Spray Hat
- _____ 261. **P.O. - 10 3/4", 6-Ruffle Ski Star & Compass Bowl**
- _____ 262. Unusual Shaped Aqua - 6 1/2" ICS Leaf Chain Bowl
- _____ 263. **P - Scarce N Stippled Basket of Roses Bon Bon - Silver & Gold Irid.**
- _____ 264. P - 7" Fishscale & Beads Plate - Great Find & Pretty
- _____ 265. **Very Scarce W - Fenton Flowers Rose Bowl**
- _____ 266. W - 8 1/2" Brocaded Poinsettia Flat Rim Bowl - Tough to Find
- _____ 267. **Wonderful A - 3 in 1 Fish Net Single Lily Epergne**
- _____ 268. P - Imp. Lustre Rose 4-Place Table Setting - Multi Elec. - Great Set
- _____ 269. **A - Butterfly & Fern, 7 pc. Water Set - Well Matched**
- _____ 270. Rare Helios - Imp. 6-Sided Candlesticks - Pr. - What A Find!
- _____ 271. **Beautiful W - 3 in 1 Fenton Holly Bowl**
- _____ 272. Beautiful Irid. W - Rose Show Plate - One of the Best
- _____ 273. **Super B - Elec. Ruffled Good Luck Rib Back Bowl**
- _____ 274. Outstanding P - PCE Multi Elec. Good Luck Rib Back Bowl
- _____ 275. **B - Ruffled N Peacocks Rib Back Bowl - Elec. & Rare**
- _____ 276. B - 9" N Stippled Three Fruits Plate - Rib Back - Real Beauty
- _____ 277. **G - Mlbg. - 7 1/4", 3 in 1, Radium Peacock Shotgun Bowl - Rare Anytime**
- _____ 278. M - N 9" Hearts & Flowers Plate - Beautiful Pinks & Yellows
- _____ 279. **A - 7 1/2" N Fruit & Flowers Hand Grip Plate - Scarce Item**
- _____ 280. M - Mlbg. 6-Ruffle Trout & Fly Bowl - Beautiful Fish
- _____ 281. **M - Mlbg. 3 in 1 Trout & Fly Bowl - Hot Item**
- _____ 282. Persian Blue - 8 1/2", 8-Ruffle Sq. Vintage Bowl - Beautiful Marigold Overlay
- _____ 283. **M - Dark 6 1/4", 6-Ruffle Lions Bowl - Sharp Detail**
- _____ 284. P - Ruffled Rose Show Bowl - All Time Favorite Pattern
- _____ 285. **Pumpkin M - 9 3/4" Collar Base Peacock & Grape Plate - Pinks & Yellows - WOW!!**
- _____ 286. P.O. - Nautilus Creamer
- _____ 287. **G - Small Rib Pedestal Rose Bowl**
- _____ 288. G - 6 3/4" Near Cut Strawberry Rd. Bowl
- _____ 289. **Clam - 10" Flared Imp. Wheels Pattern Bowl - Very Scarce**
- _____ 290. Clear - 6" Shriners Los Angeles 1906 Plate - No Irid.
- _____ 291. **Clear - 1909 Tobacco Base Shriner Champagne**
- _____ 292. M - Oval English Hobstar Bowl w/Metal Frame
- _____ 293. **Lav. A - N Grape & Cable Whimsey Nappy from Punch Cup**
- _____ 294. Vas. - Ruffled Fenton Holly Compote
- _____ 295. **Beautiful G - Vintage Sm. Single Lily Epergne**
- _____ 296. B - 6 1/2" Cherry Chain Plate - Orange Tree Ext. - Very, Very Pretty
- _____ 297. **G - Imp. Grape Cup & Saucer - Very Scarce**
- _____ 298. B - JIP 5 3/4" Vase
- _____ 299. **Rare B - Grape Arbor Whimsey Vase from Tumbler**
- _____ 300. M - Whimsey Dia. Points? Vase from Flute Punch Bowl Base
- _____ 301. **Rare P.O. - Collar Base, 3 in 1, Peacock & Grape Bowl**
- _____ 302. Beautiful Multi Elec. A - Stippled Three Fruits Plate
- _____ 303. **G - Stippled N Grape & Cable Vt. Plate - Adv. Old Rose Distilling - Beautiful Example**

- _____ 304. G - 10", 3 in 1 Fenton Little Flowers Bowl - Scarce Color & Shape
- _____ 305. **Highly Prized B - 9¼" Fenton Leaf Chain Plate**
- _____ 306. A - Ruffled Isaac Benesch & Sons Adv. Bowl - Hot Stuff
- _____ 307. **Rare Cherry Red - 6⅝" ICS Peacock Tail Bowl**
- _____ 308. M - 6-Ruffle Radium Brooklyn Bridge Bowl
- _____ 309. **P - N Stippled Strawberry Plate - Top of the Line Example**
- _____ 310. P.M. - PCE N Stipple Strawberry Bowl - Pinks, Yellow, Blues
- _____ 311. **P - 9" N Strawberry Plate - BW Back - Super Blues, Purples & Golds**
- _____ 312. M - 9½" Coral Plate - Outstanding Color for this Rarity
- _____ 313. **G - 9" Ruffled Concord Bowl - A Beauty**
- _____ 314. A - 9" Ruffled Concord Bowl - Rare Color
- _____ 315. **B - 9" Ruffled Concord Bowl - Ex. Rare Color**
- _____ 316. M - 9" Ruffled Concord Bowl - Super Pretty
- _____ 317. **P.M. - 9⅝" Rose Show Plate - Super Pinks, Blues & Yellows**

- _____ 345. **G - Imp. Dia. Lace, 6-Ruffle 5" Bowl - Rare Color & Size**
- _____ 346. Clear Iridized - Rose Enameled Decor, Bulbous 5" Tall Pitcher
- _____ 347. **M - 4-Sided Kittens Bowl**
- _____ 348. M Flash - 5" Tall Flute Basket
- _____ 349. **M Flash - 6¼" Tall Flue Basket**
- _____ 350. M Flash - Peggin Bucket Master Salt

 **THANK YOU FOR ATTENDING THE AUCTION**

If you haven't attended an **AIR CAPITAL CARNIVAL GLASS CONVENTION** or a **MICKEY REICHEL AUCTION**, I'm extending a special invitation to attend and join us.

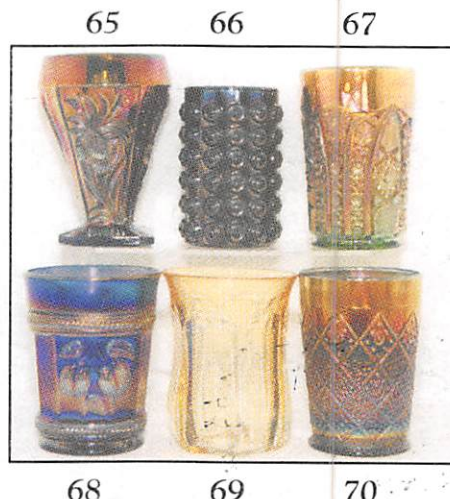
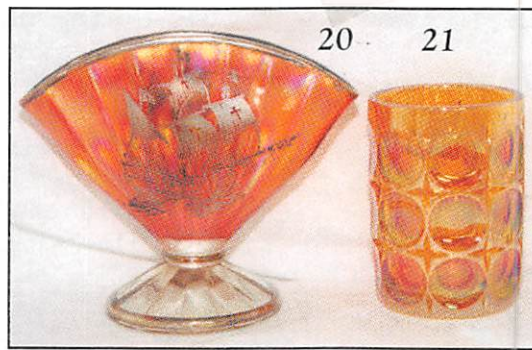
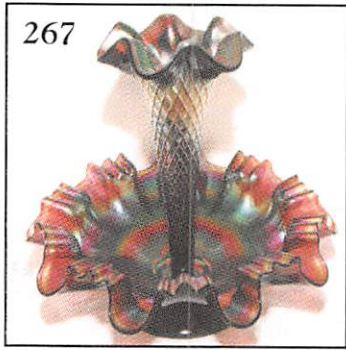
Thank You, Mickey

318 THRU 350 JOHN BRITT MINIATURES

- _____ 318. M - Tulip & Cane Clariet - Rare
- _____ 319. **M - Band of Stars Wine**
- _____ 320. M - Pineapple & Fan Wine
- _____ 321. **Rare M - Flute & Cane Wine**
- _____ 322. M - Wide Panel Vt. 4¼" Double Shot Glass
- _____ 323. **M - 5" Enamel Daisy Spray Vase**
- _____ 324. M - 6" Maypole Stick Vase
- _____ 325. **Smokey Blue - Soda Gold or Crackle S & P**
- _____ 326. M - Hobnail S & P Shakers
- _____ 327. **Violet Flashed - Melon Ribbed S & P from Presznick Museum**
- _____ 328. M - Rare 49er, 3⅝" Tall Glass
- _____ 329. **Smokey Flash - Estate Master Salt - Ftd.**
- _____ 330. M Flashed - Stippled Slipper w/Bow
- _____ 331. **Clear Irid. - Bar Bell Shape Knife Rest**
- _____ 332. M - Flash, Triangle Knife Rest - Enamel Monogram
- _____ 333. **M - Flashed 1¼" Tall Eye Wash Vase**
- _____ 334. Flashed M - Dog Candy Container w/Screw Lid
- _____ 335. **M - 1/10 Pint Golden Wedding Whiskey Bottle**
- _____ 336. M - Kittens Spooner
- _____ 337. **M - Wreath Cherry Mini Cuspidor - Possible One of a Kind**
- _____ 338. Flashed M - Tumbler - Pattern Glass - Unknown Pattern
- _____ 339. **Flashed M - Tumbler - Pattern Glass - Unknown Pattern**
- _____ 340. Flashed M - Tumbler - Pattern Glass - Unknown Pattern
- _____ 341. **W.O. - Swan Salt - Non Irid.**
- _____ 342. Celeste B - Pastel Swan Salt
- _____ 343. **Pastel Powder B.O. - Swan Salt - Non Irid.**
- _____ 344. I.G. Vas. - Swan Salt

CARNIVAL GLASS AUCTIONS
CALENDAR OF EVENTS
November 12 & 13, 1999
 at Boonville, Missouri
December 4, 1999
 at Boonville, Missouri
January 8, Year 2000
 at Boonville, Missouri
9th Annual Extravaganza

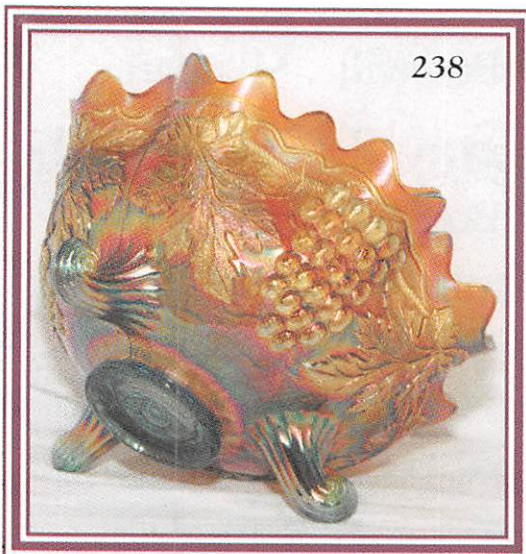
For Free Color Catalogs & Information Write:
Mickey Reichel
 516 Third Street, Boonville, MO 65233-1536
 or Call: 660-882-5292 Days or
 660-882-5283 Home



MICKEY REICHEL
ANTIQUÉ & AUCTION, L.C.
 516 THIRD STREET
 BOONVILLE, MO 65233-1536



FIRST CLASS MAIL



SPECIAL INVITATION TO:



501

"EXCITEMENT BUILDS AS THE CROWD GATHERS AT THE MICKEY REICHEL AUCTION COMPANY!"