



CARNIVAL GLASS AUCTION



Session #1: Friday, October 1, 1999 - 6:00 p.m.

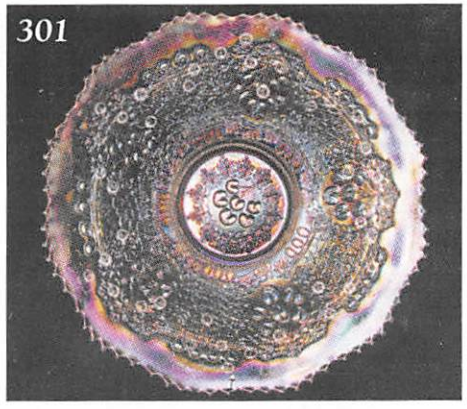
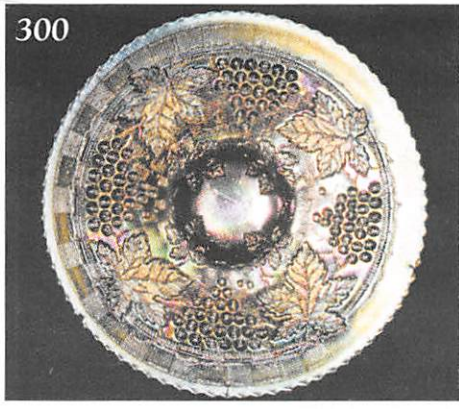
Session #2: Saturday, October 2, 1999 9:00 a.m.

Held Inside the Mickey Reichel Auction Center
Boonville, Missouri

Office: 660-882-5292 • Home: 660-882-5283

Direct e-mail: mreichel@undata.com

NEW WEB SITE ON: <http://www.woodslan.com/carnivalglass>



NO BUYERS PREMIUM

Held Inside the Mickey Reichel Auction Center

1 Mile North of I-70 on Hwy. 5, Exit 101, Boonville, Missouri • 20 Miles West of Columbia, MO on I-70
Preview Friday 12 p.m. - 6 p.m. and 7:30 a.m. - 9:00 a.m. Day of Auction

Make Reservations **EARLY** at one of these local motels:

Days Inn: 660-882-8624 • Comfort Inn: 660-882-5317 • Super 8: 660-882-2900

Auction Consists of Rarity, Great Irid.. and Variety

WRITE IN BIDS: If you are unable to attend the auction, we will be happy to accept absentee bids which must be received by THURSDAY, SEPTEMBER 30, 1999. Don't Delay.

FOR AUCTION PRICE RESULTS: Send \$3.00 and Large S.A.S.E. to 516 Third Street, Boonville, MO 65233-1536

PLEASE NOTE: There is a **\$5 handling charge for each successful bid which will be added to the selling price** for all write-in bids. This is in addition to the cost of postage, insurance and packing. Your write-in bid will be entered just as if you are present and bidding. **Successful bidders will be notified in 1 to 3 days by the auctioneer (so be sure to include your phone number).** Direct mail bids to Auctioneer Mickey Reichel, 516 Third Street, Boonville, MO 65233-1536. Terms: Cash or Check accepted with proper I.D. and Social Security Number and References. Announcements made day of the auction supercede all printed material. Not Responsible for Accidents or Sold Items.

No return on any items once they leave the Auction Center (No Exceptions).****

Call for additional information: 660-882-5292 days or 660-882-5283 evenings.

FAX: 660-882-5292 (evening hours start FAX transmission after beep)

MAIL BIDS: Items are bid on in perfect condition with average or above iridescence OR as listed in the brochures. Bids will not be carried out when damage on an item has been found during the auction.

PEOPLE PRESENT AT AUCTION ARE RESPONSIBLE FOR FINDING ANY PINHEADS, WEAR, SPOTTINESS, MANUFACTURER'S DEFECTS OR ANY OTHER MINOR FLAWS, ETC.

NOTE: Read each line, as we have accentuated the type of no particular piece, all are special.

Day 1 - October 1, 1999 - 6:00 p.m.

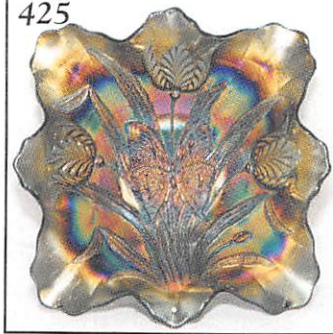
- | | | | |
|-------|--|-------|--|
| _____ | 1. Red - Contemporary - HOACGA 1978 Mug | _____ | 17. Amethyst - Contemporary - HOACGA Whimsey Creamer 1993 |
| _____ | 2. IB - Contemporary - HOACGA 1979 Mug | _____ | 18. Amber - Contemporary - HOACGA 1994 Mug - A & B |
| _____ | 3. Green - Contemporary - HOACGA 1980 Mug | _____ | 19. Saph. - Contemporary - HOACGA 1995 Mug - A & B |
| _____ | 4. Vaseline Opal - Contemporary - HOACGA 1981 Mug | _____ | 20. I.G. Opal - HOACGA Bell 1986 - A & B |
| _____ | 5. B - Contemporary - HOACGA 1982 Mug | _____ | 21. B - HOACGA Bell 1987 |
| _____ | 6. Amber - Contemporary - HOACGA 1983 Mug | _____ | 22. M - HOACGA Bell 1988 |
| _____ | 7. Purple - Contemporary - HOACGA 1984 Mug - A or B | _____ | 23. Aqua - HOACGA BELL 1989 - A & B |
| _____ | 8. Lav. - Contemporary - HOACGA 1985 Mug | _____ | 24. Custard-M - HOACGA 1983 Loving Cup - Floral Enamel - 1 of a Kind |
| _____ | 9. I.G. Opal - Contemporary - HOACGA 1986 Mug | _____ | 25. I.B. - HOACGA 1982 Corn Vase |
| _____ | 10. White - Contemporary - HOACGA 1987 Mug | _____ | 26. L.G.O. - HOACGA 1986 Hobnail Cuspidor |
| _____ | 11. Aqua - Contemporary - HOACGA 1988 Mug - A & B | _____ | 27. B - HOACGA 1987 Hobnail Cuspidor |
| _____ | 12. Pink Opal - Contemporary - HOACGA 1989 Mug - A & B & C | _____ | 28. M - HOACGA 1988 Hobnail Cuspidor |
| _____ | 13. Amberina - Contemporary - HOACGA 1990 Mug - A & B | _____ | 29. Aqua - HOACGA 1989 Hobnail Cuspidor - A & B & C |
| _____ | 14. Pink Slag - Contemporary - HOACGA 1991 Mug | _____ | 30. Red - HOACGA 1989-A and 1990-B Hobnail Cuspidor |
| _____ | 15. Teal - Contemporary - HOACGA 1992 Mug | _____ | 31. Teal - HOACGA - 1992 Hobnail Cuspidor |
| _____ | 16. Amethyst - Contemporary - HOACGA 1993 Mug | _____ | 32. Lav. - HOACGA 1993 Hobnail Cuspidor |

- _____ 33. Amber - HOACGA 1994 Hobnail Cuspidor
 _____ 34. Celeste - HOACGA 1995 Hobnail Cuspidor
 _____ 35. Red - Peacock Dahlia HOACGA 1991, Two Sides
 Up Plate
 _____ 36. Red - Peacock Dahlia HOACGA 1991 Flat Plate
 _____ 37. Smoke - Fenton - Stretch J.I.P. Rising Sun Bowl??
 _____ 38. Pink - 8" Smith Glass Bowl
 _____ 39. Brass - 8¾" Imp. Pansy Bowl - Very Unusual!
 _____ 40. Red - HOACGA 1985 Bell
 _____ 41. I.G. Opal - HOACGA 1986 Bell
 _____ 42. Purple - HOACGA 1984 Mug - A & B
 _____ 43. I.G. Opal HOACGA 1986 Mug - A & B
 _____ 44. White - HOACGA 1987 Mug - A & B
 _____ 45. Aqua - HOACGA 1988 Mug - A & B
 _____ 46. Pink Opal - HOACGA 1989 Mug - A & B
 _____ 47. Amberina - HOACGA 1990 Mug - A & B
 _____ 48. Teal - HOACGA 1992 Mug
 _____ 49. Lav. - HOACGA 1993 Mug
 _____ 50. Amber - HOACGA 1994 Mug
 _____ 51. Saph. - HOACGA 1995 Mug
 _____ 52. I.G. Opal - HOACGA 1986 Hobnail Cuspidor
 _____ 53. B - HOACGA 1987 Hobnail Cuspidor
 _____ 54. M - Opal - HOACGA 1988 Hobnail Cuspidor
 _____ 55. Aqua - HOACGA 1989 Hobnail Cuspidor
 _____ 56. Red - HOACGA 1990 Hobnail Cuspidor
 _____ 57. Blue Opal - HOACGA 1991 Hobnail Cuspidor
 _____ 58. Teal - HOACGA 1992 Hobnail Cuspidor
 _____ 59. P - HOACGA 1993 Hobnail Cuspidor
 _____ 60. Amber - HOACGA 1994 Hobnail Cuspidor
 _____ 61. Celeste - HOACGA 1995 Hobnail Cuspidor
 _____ 62. Aqua Opal - HOACGA 1996 Hobnail Cuspidor
 _____ 63. Amy. Opal - HOACGA 1997 Hobnail Cuspidor
 _____ 64. White - HOACGA 1998 Hobnail Cuspidor
 _____ 65. Lav. - HOACGA 1999 Hobnail Cuspidor
 _____ 65A. Aqua Opal - HOACGA 1996 Whimsey Candlestick
 _____ 65B. Plum Opal - HOACGA 1997 Whimsey Candlestick
 _____ 65C. Plum Opal - HOACGA 1997 Pinched Vase
 Candlestick
 _____ 65D. Amber - ICGA 1993 Frolicking Bears Basket
 _____ 65E. L.G. Opal - ICGA 1998 Frolicking Bears Cuspidor
 _____ 65F. Amberina - HOACGA 1997 Hatpin Holder
 _____ 65G. Red - HOACGA 1978 Corn Vase
 _____ 65H. I.B. - HOACGA 1982 Gold Trim Corn Vase
 _____ 65I. Red - HOACGA 1996 Whimsey Candlestick
 Basket
 _____ 65J. Amberina - ACGA 1995 Inverted Strawberry Dish
 w/lid
 _____ 65K. Red - ACGA 1993 Inverted Strawberry Cuspidor
 _____ 65L. Custard - M - HOACGA 1983 Loving Cup
 _____ 65M. Teal - HOACGA 1998 Loving Cup Decorated
 _____ 65N. White - HOACGA 1998 Loving Cup
 _____ 65O. White - HOACGA 1998 Orange Tree Goblet
 _____ 65P. Red Opal - ICGA 1994 J.I.P. Vase
 _____ 65Q. White Opal - ICGA 1994 J.I.P. Vase
 _____ 65R. Red - HOACGA 1984 Butterfly Fernery Bowl
 _____ 65S. Red - 6½" HOAGA 1993 Good Luck Plate
 _____ 65T. Red - HOACGA 1993 Good Luck Whimsey Basket
 _____ 65U. Red - 6½" HOACGA Peacock & Dahlia 1991 Plate
 _____ 65V. Vas. Opal - Fenton Inverted Strawberry Sm.
 Compote
 _____ 65W. Celeste - 10½" ICGA 1995 Acanthus Plate
 _____ 66. PO - 8" 10-Ruffle Ski Star Compass Bowl
 _____ **67. PO - 8" Tri-Corner Ski Star Compass Plate**
 _____ 68. PO - Dugan, Holly Berry Tri-Corner Sauce
 _____ 69. PO - 8" Ruffled Smooth Ray Caroline Bowl
 _____ **70. PO - 8½" 3 in 1 Crimp Raindrops Bowl**
 _____ 71. PO - 7¾" 6-Ruffle Single Flower Bowl
 _____ 72. PO - Dugan, Holly Berry Tri-Corner Sauce
 _____ **73. PO - 6½" CRE Ruffled Folding Fan Compote**
 _____ 74. PO - 6½" CRE Ruffled Smooth Ray Bowl
 _____ **75. PO - 7¾" 10-Ruffle Deep Flowers & Frames**
Bowl
 _____ 76. PO - 8" ICS Westmoreland Scales Bowl
 _____ 77. PO - Leaf Rays Nappy
 _____ 78. PO - 7½" 10-Ruffle Pl. Int. Ftd. Cherry Bowl
 _____ **79. PO - 6½" Four Flowers Plate, BW ext.**
 _____ **80. M - Floral & Grape Whimsey J.I.P. Vase**
 _____ 81. B - Blackberry Miniature Compote
 _____ 82. M - Plain Jane Ruffle Compote
 _____ 83. Helios - Scroll Embossed Compote (Glows)
 _____ 84. M - Scroll Embossed Compote
 _____ 85. M - Waterlily Bon Bon
 _____ 86. G - Fenton Butterfly Bon Bon
 _____ **87. G - N Grape & Cable Spooner - Scarce**
 _____ 88. A - Grape & Cable Rd. Berry Bowl - 5"
 _____ 89. A - 5" Rd. N Peacock at Fountain Berry Bowl
 _____ 90. M - 7" Ruffle Fenton Vintage Bowl
 _____ **91. B - N 8-Sided Bushel Basket - Scarce**
 _____ 92. M - N Fruits & Flowers Bon Bon - Beautiful
 _____ **93. Amber - 5½" dia. Imp. Lustre Rose, Rose Bowl**
 _____ 94. P.M. - 7½" Grape Vine Lattice Ruffled Plate -
 Beauty
 _____ 95. B - 2 Sides Up O.E. - Basket - 5¾"
 _____ 96. B - 2 Sides Up O.E. - Basket - 6"
 _____ 97. B - 6-Ruffle 5¾" O.E. Basket
 _____ **98. Aqua - 5½" 6-Ruffle O.E. Basket**
 _____ 99. Smokey Blue - 5½" 6-Ruffle O.E. Basket
 _____ 100. P. Blue - 6" 2-Sides Up O.E. Basket - M - Overlay
 _____ 101. P.M. - 5½" 4-Sides Up O.E. Basket
 _____ 102. P.M. - 5½" 6-Ruffle O.E. Basket
 _____ **103. Pink - 5½" 6-Ruffle O.E. Basket w/M-Overlay**
 _____ 104. Pink - 6" 2-Sides Up O.E. Basket w/M-Overlay
 _____ 105. P.M. - 5¾" 2-Sides Up O.E. Basket
 _____ **106. Vas. - 6" 2-Sides Up O.E. Basket**
 _____ 107. Red - 6½" ICS Non-Irid. O.E. Bowl
 _____ 108. Amberina - 7¾" Flat Non-Irid. Plate
 _____ **109. M - 6½" Feldman Bros. Adv. O.E. Basket - 2-**
Sides Up
 _____ **110. M - 5¾" John H. Brand Adv. O.E. Basket - 2-**
Sides Up
 _____ **111. M - 6¼" John H. Brand Adv. O.E. Basket - 2-**
Sides Up
 _____ 112. M - 7" Blackberry O.E. Basket - 2-Sides Up
 _____ 113. M - 10" Fenton Holly Plate - Radium

430



425



268



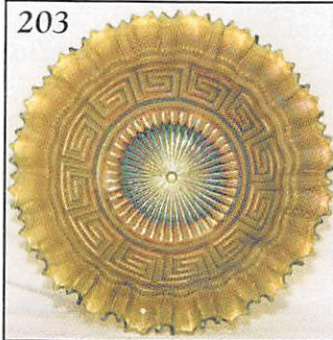
182



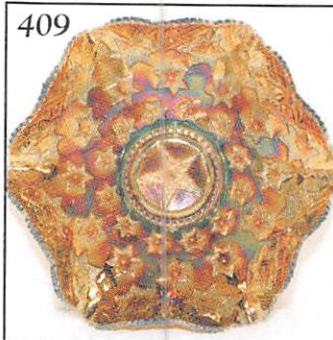
349



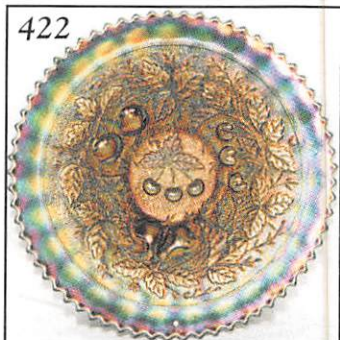
203



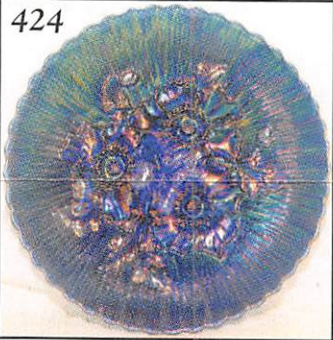
409



422



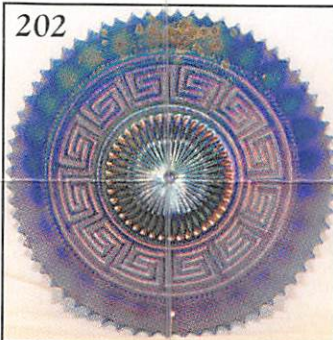
424



415



202



305



390



284



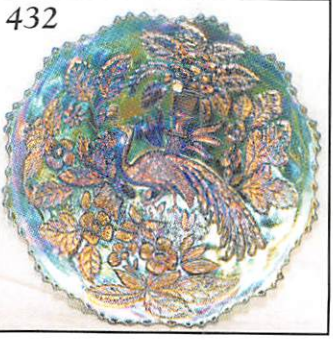
341



180



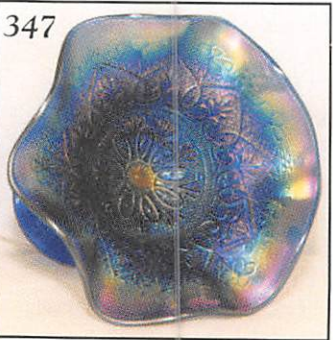
432



306



347



353



114. B - 9" 3 in 1 Fenton Holly Bowl
115. **Red - Ruffled Fenton Holly Bowl - Chips on Edge**
116. M - 9" Ruffled Imp. Grape Bowl
117. **M - N Ruffled Peacocks Bowl - Super Pastel Irid.**
118. A - Beautiful Multi Irid. 8½" Wishbone Bowl
119. **P.M. - 8" I.C.S. Orange Tree Bowl w/Trunk Center Scarce - Very Pretty**
120. Pow. Blue - Fenton Peacock at Urn Rd. Compote - Base Bubble
121. P.M. - N Plain Back, Ruffle, 3-Fruits Bowl
122. **A - 9" Spat. Ft. Peacock & Grape Plate - Satin Silver Irid. - Rare Base Color**
123. **P - Grape & Cable Hatpin Holder - Great One**
124. Lav. - N 8½" Ruffled Grape & Cable Vt. Bowl
125. M - 3 in 1 Captive Rose Bowl
126. M - 5½" Rd. Little Flowers Bowls - 6 x \$
127. P.O. - Drapery Lamp Shade
128. M - Colonial Buttermilk Goblet
129. M - Plain Beer Goblet
130. M - Octagon Decanter / No Stopper
131. P.M. - Grape Vine Lattice Tumbler - Radium
132. Beautiful Purple - 8½" Imp. Heavy Grape Plate
133. Lime I.G. - Stipple 3-Fruits Med. Ftd. Bowl w/Lg. Rim Chip
134. M - 7½" O.E. Basket - 2-Sides Up w/Crack
135. M - 7½" Rd. English Pattern Bowl??

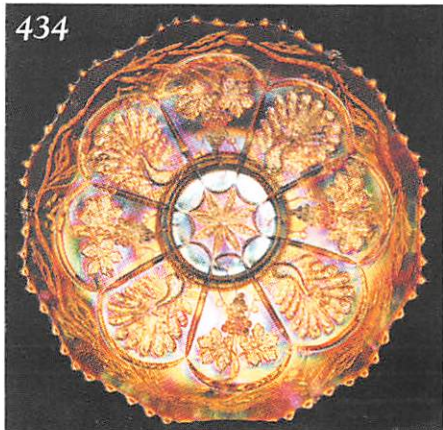
Day 2 - October 2, 1999 - 9:00 a.m.

136. **M - 7" Be Wise Owl Bank**
137. M - 8½" ICS Leaf Chain Bowl
138. **G - 8" ICS Dragon & Lotus Bowl - Scarce**
139. Powder Blue - 2-Sides Up O.E. Basket
140. **Vaseline - 6¾" 6-Ruffle O.E. Basket**
141. Vaseline - 5¼" 6-Ruffle O.E. Basket
142. Saph. - 5½" 6-Ruffle O.E. Basket
143. B - 5¼" 4-Sides Up O.E. Basket
144. P.O. - 6½" C.R.E. Smooth Ray Plate - Scarce
145. **B - 6½" 12-Sided Pine Cone Plate**
146. M - 6¼" Persian Med. Plate
147. M - 7" Grape Vine Lattice Plate - Very Pretty
148. **W - 7" Persian Garden/Pool of Pearls Ext. Plate - Frosty**
149. P.O. - 6½" Four Flowers Plate - BW Ext.
150. P.M. - Super 7" Fish Scale & Beads Plate
151. M - Stippled Rays 6¾" Plate
152. M - 6½" Imp. Grape Plate - A or B
153. **Vaseline - 7¾" Sq. Frosted Block Plate - No Irid - Chips**
154. **Saph. - 8½" Florentine Candlesticks - Pr.**
155. Vaseline - 8½" Florentine Candlesticks - Pr.
156. M - 7½" Hex Base Bell Stem Candlesticks - Pr.
157. M - 6½" 6-Flute, ¾" Round Base Candlesticks - Pr.
158. M - 8½" Florentine Candlesticks - Pr.
159. G - Cambridge No. 2660/108 Cologne Barber Bottle - Rare

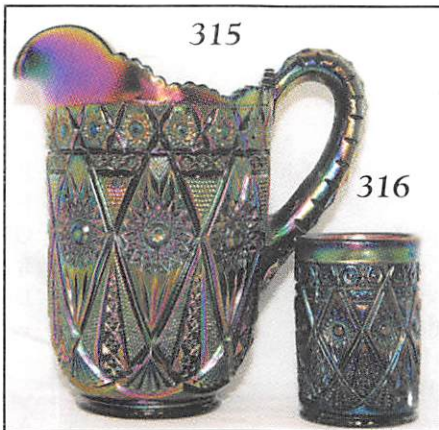
160. **ULTRA RARE - G - Frolicking Bears Tumbler - WOW!! - WHAT A DREAM TO OWN**
161. M - Paneled Dandelion Tumbler - Dark
162. A - Paneled Dandelion Tumbler - A & B
163. M - Butterfly & Berry Tumbler - A & B
164. B - Butterfly & Berry Tumbler - A & B
165. M - Imp. Windmill Tumbler - A & B
166. **I.G. - N Oriental Poppy Tumbler - Extra Nice**
167. W - N Oriental Poppy Tumbler - A & B - Frosty
168. P - N Oriental Poppy Tumbler - A & B - Super Irid.
169. M - N Oriental Poppy Tumbler
170. **I.B. - Grape Arbor Tumbler - A & B**
171. **W - Grape Arbor Tumbler - A & B**
172. P - Grape Arbor Tumbler - A & B
173. M - Grape Arbor Tumbler - A & B
174. W - N Peach Tumbler w/Gold Trim - A or B
175. M - N Flute Tumbler - A & B
176. P - Imp. Flute No. 2 Tumbler - A & B (Electric)
177. B - Ten Mums Tumbler - A & B
178. M - Ten Mums Tumbler
179. **A - 8½" Wishbone Plate**
180. G - 8½" Wishbone Plate - Rare - Sorry has Crack
181. A - 7" N Ftd. 8-Ruffle Wishbone Nut Bowl - Stretch Irid.
182. **A - 9" I.C.S. Rd. Mlbg. Peacock Lg. Mold Bowl**
183. G - Ruffle Mlbg. Holly Whirl Bowl - Satin
184. A - Mlbg. Holly Sprig Tri-Corner Nappy - Radium
185. **G - Mlbg. 8½" 6-Ruffle Cherry Bowl - Radium**
186. G - Mlbg. 5¼" Rd. Cherry Bowl - A & B
187. **G - Mlbg. Rd. 8" Flared Grape Wreath Multi-Star Vt. Bowl - Scarce**
188. **G - Mlbg. Boutonniere Radium Compote - Super**
189. A - Mlbg. 9¼" Radium Ruffle Rays & Ribbons Bowl
190. **G - Mlbg. 2-Sides Up Radium Holly Sprig Bon Bon - Beauty**
191. **A - Mlbg. 5¼" I.C.S. Radium Blackberry Wreath Bowl**
192. P.O. - Westmoreland 8½" Carolina Dogwood Bowl
193. **Teal G - 9¼" Ftd. Ruffle Fenton Waterlily Bowl - Glows**
194. P.M. - P.C.E. Rib Back Good Luck Bowl
195. M - Ruffle Rib Back Good Luck Bowl - Great One
196. **Amberina - 8½" I.C.S. Dragon & Lotus Bowl - Silver & Gold Irid. - Rarer than Red**
197. **Amberina - Stippled Rays Ruffled Bowl - Pretty**
198. B - 9" Rd. Cherry Chain Bowl
199. **Celeste B - 8¼" 3-Row O.E. 2-Sides Up B.W. Bowl**
200. **Aqua - 7¼" Ruffle Peacock & Dahlia Bowl - Rarity - Neat Bowl**
201. A - 8¼" 6-Ruffle Wind Flower Bowl - Multi Elec.
202. **RARE - B - N 9" Greek Key Plate - Rust Spots on Face - See Photo**
203. **G - N PCE Greek Key Bowl - BW Ext. - Also Rarity**

- _____ 204. A - PCE Greek Key Bowl - BW Ext. - Also Rarity
- _____ 205. P - N 10¹/₄" ICS Peacock & Urn Bowl
- _____ 206. A - N 5¹/₂" ICS Peacock & Urn Bowl - A & B & C & D & E & F
- _____ 207. **W - Poppy Show Plate - Above Average**
- _____ 208. W - Poppy Show Bowl - Frosty
- _____ 209. **W - 9" Fanciful Lightly Flared Plate - Super Irid.**
- _____ 210. **W - 9" Round-Up Lightly Flared Plate - Super Irid. - Beautiful**
- _____ 211. W - 9¹/₂" Rose Show Plate - Beautiful Example
- _____ 212. W - Peacocks Plate - Smooth Back
- _____ 213. P.M. - 10¹/₄" Acanthus Plate - Blues & Pinks
- _____ 214. A - N Butterfly Bon Bon
- _____ 215. **Honey Amber - Palm Beach Pitcher - Beauty**
- _____ 216. **M - RARE - Brockwitz TARTAN 8" Tall Tankard - 1 of a Kind?**
- _____ 217. M - Vintage Banded Dugan - Dia. - Pitcher - Very Scarce
- _____ 218. M - N Raspberry Milk Pitcher
- _____ 219. **P - N Grape & Cable Tankard Pitcher - 9³/₄" - Scarce - Base Chip - Still a Dandy**
- _____ 220. **M - Fentonia Water Pitcher - Great Example**
- _____ 221. P - Grape Arbor Tankard Pitcher - Extremely Hard to Find
- _____ 222. P - N Grape & Cable Pitcher - Old Favorite
- _____ 223. P - N Grape & Cable Tumbler
- _____ 224. **G - Cambridge Double Star Tankard - Scarce**
- _____ 225. G - Cambridge Double Star Tumbler
- _____ 226. M - N Raspberry Water Pitcher
- _____ 227. M - N Raspberry Tumbler w/Ribbed Int.
- _____ 228. **M - Goofus - Palm Beach 5¹/₄" Tall, 6" Dia. - Jardinere w/Base Crack - A Beauty**
- _____ 229. M - Classic Art Rose Bowl - Rare - Also Rim Crack
- _____ 230. I.B. - 5¹/₄" Rd. O.E. Bowl - Unusual Shape & Pretty
- _____ 231. P.O. - 6¹/₂" Four Flowers Plate - 1¹/₂" of Opal
- _____ 232. G - 6¹/₄" Mlbg. Cosmos Plate - Radium
- _____ 233. **M - Flashed - RARE 6", 6-Sided Field Thistle Plate**
- _____ 234. **M - 6" Star & File Imp. Plate - Scarce**
- _____ 235. B - 7¹/₂" Leaf Chain Plate
- _____ 236. M - 6" Cherry Chain Plate
- _____ 237. M - 7³/₄" Frosted Block Plate - Great Example
- _____ 238. P - 6¹/₂" Wishbone & Spades Plate - Pl. Bk.
- _____ 239. **B - 7³/₄" Fenton Vintage Plate - Great Find**
- _____ 240. M - Kittens Bowl - 4 Sides Up - A & B
- _____ 241. **M - 4⁵/₈" Kittens Plate**
- _____ 242. M - 4⁵/₈" Kittens Saucer
- _____ 243. M - 4¹/₂" Kittens Banana Shaped Card Tray - A & B
- _____ 244. M - Kittens Cup - A & B
- _____ 245. **M - Kittens Spooner**
- _____ 246. M - Kittens, 2⁵/₈" Tall Vase
- _____ 247. W - Palm Beach Tumbler
- _____ 248. M - Palm Beach Tumbler (Scarce)
- _____ 249. Honey Amber - Palm Beach Tumbler - A & B
- _____ 250. M - Ftd. Orange Tree Tumbler - A & B
- _____ 251. W - Ftd. Orange Tree Tumbler - A & B
- _____ 252. **W - Wisteria N Tumbler - A & B**
- _____ 253. P - N Peacock at Fountain Tumbler
- _____ 254. A - Dugan Peacock at Fountain Tumbler
- _____ 255. M - N Peacock at Fountain Tumbler - A & B
- _____ 256. P - Greek Key N Tumbler
- _____ 257. **G - Greek Key N Tumbler - A & B**
- _____ 258. **P - Heavy Iris Tumbler - A & B**
- _____ 259. M - Leaf Tier Ftd. Tumbler - A & B
- _____ 260. **M - Fenton Inverted Coin Dot Tumbler - A & B**
- _____ 261. A - Grape Vine Lattice Tumbler - A & B
- _____ 262. **G - N Springtime Tumbler - A & B**
- _____ 263. M - Grape & Gothic Arches Tumbler - A & B
- _____ 264. **A - Imp. Grape Tumbler - A & B**
- _____ 265. B - Beaded Stork & Rushes Tumbler - A & B
- _____ 266. M - Ruffled Stream of Hearts Compote
- _____ 267. **B. Opal - Westmoreland File & Fan Compote**
- _____ 268. P - 9" Scroll Embossed Multi Elec. Plate - WOW!
- _____ 269. G - 9" Scroll Embossed Plate
- _____ 270. **A - 9" Dugan Vintage Plate - Rare**
- _____ 271. **M - 9" Dugan Vintage Plate - Rare**
- _____ 272. P.O. - 11" 8-Ruffle, Smooth Ray/Jewel Heart Ext. Bowl
- _____ 273. G - N Acorn Burrs Butter Dish w/Lid - Beautiful
- _____ 274. P - N Grape & Cable Butter Dish w/Lid
- _____ 275. **P - N Grape & Cable Powder Dish - Complete - Nice**
- _____ 276. A - N 7¹/₂" Grape & Cable BW Plate - Leaf Center
- _____ 277. **M - Grape & Cable Hatpin Holder**
- _____ 278. M - Grape & Cable Dresser Tray
- _____ 279. A - 9" Grape & Cable BW Plate
- _____ 280. M - 9" Grape & Cable BW Plate
- _____ 281. P - N Ruffle Peacocks Bowl
- _____ 282. M - 9" Imp. Open Rose Plate
- _____ 283. M - 10" Fenton Holly Plate - Radium
- _____ 284. **B - 7³/₄" RARE Horse Med. Plate - Chip on Back**
- _____ 285. PM - 7¹/₂" Horse Med. Plate - Radium
- _____ 286. M - 9" Collar Base, Peacock & Grape Radium Plate
- _____ 287. B - 9" ICS Little Flowers Bowl - Scarce Shape
- _____ 288. Amber - 9" Imp. Open Rose Plate
- _____ 289. W - 9¹/₂" Orange Tree Plate
- _____ 290. A - N 9" 3-Fruits BW Plate
- _____ 291. **A - 7" Tri-Corner Beads & Flowers Plate - Multi Elec. and Scarce**
- _____ 292. **P.O. - 7" Tri-Corner Beads & Flower Plate - Also Pretty**
- _____ 293. P.O. - 6¹/₂" Four Flowers Plate - Full Opal
- _____ 294. P.O. - 9¹/₂" Ruffle Dugan Cherries, Collar Base, Jewel Heart Bowl
- _____ 295. B - 7¹/₂", 12-Sided Pine Cone Plate - Epoxy on Tip
- _____ 296. W - 6³/₄" Persian Garden/Pool of Pearls Plate - Blues & Pinks
- _____ 297. B - 7¹/₂" Fenton Vintage Plate
- _____ 298. **Pumpkin M - 7³/₄" Wild Strawberry Hand Grip Plate - Great Marigold**
- _____ 299. M - 8" Imp. Heavy Grape Plate
- _____ **300. W - 12" Super Grape & Cable Chop Plate - 1 of a Kind - Collector's Dream**

434

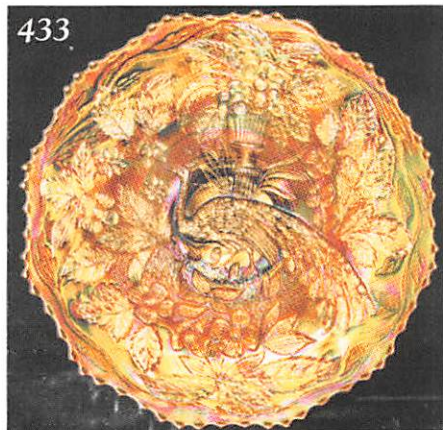


315



316

433



228

216



229

337



417

416



308

309



418



311

312



210

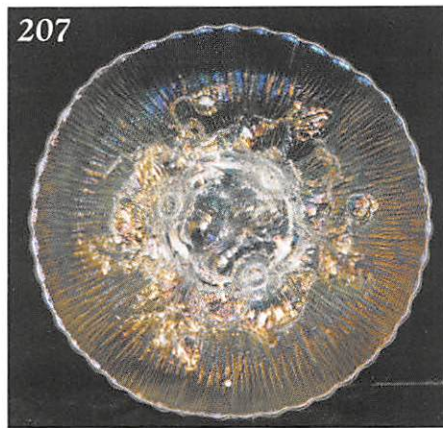


334

335



207



301. **W - 11" Cherry Chain Chop Plate - Super Irid - Has Base Chips - Beautiful Plate**
302. P.O. - 10 $\frac{1}{4}$ " Rd. Four Flowers Chop Plate - Soda Gold Ext. - Very Scarce
303. M - 11" Imp. Heavy Grape Chop Plate
304. **M - 11 $\frac{1}{4}$ " Ftd. Gorgeous Stag & Holly Chop Plate - 1 Tip Chip**
305. **M - Imp. 10 $\frac{1}{4}$ " Nu-Art Chrysanthemum Chop Plate - Also Very Scarce**
306. **RARE B - 10 $\frac{1}{4}$ " Ftd. Fantail Chop Plate - 2" Int. Crack - Ultra Rare Any Condition**
307. G - 10 $\frac{1}{4}$ " Four Flowers Vt. Chop Plate
308. **A - Rare Checkerboard Water Pitcher**
309. **A - Checkerboard Tumbler**
310. P - N Raspberry 7-Pc. Water Set
311. **Rare P - Imp. Flute #700 Elec. Water Pitcher**
312. **P - Imp. Flute Vt. #3 Elec. Tumbler**
313. P - Multi Elec. Imp. Grape Water Pitcher
314. P - Imp. Grape Tumbler - Radium Elec. - Super
315. **P - Outstanding Example Imp. Dia. Lace Pitcher**
316. P - Super dia. Lace Tumbler
317. M - Blackberry Block Tumbler - A & B
318. G - Blackberry Block Tumbler
319. M - Waterlily & Cattail Vt. Tumbler - A & B
320. **A - Mlbg. Diamonds Tumbler - A & B**
321. G - Mlbg. Diamonds Tumbler
322. M - Mlbg. Diamonds Tumbler
323. P. Tiger Lily Tumbler - Rim Nick
324. A - Tiger Lily Tumbler
325. M - Tiger Lily Tumbler
326. M - Tiger Lily Tumbler
327. **B - God and Home Tumbler - A & B**
328. P - Vineyard Tumbler - Beautiful Elec. - A & B
329. M - Fentonia Tumbler - Beauties - A & B
330. **M - Harvest Flower Tumbler - A - B**
331. **M - Field Thistle Tumbler - A - B**
332. B - Apple Tree Tumbler - A - B
333. **G - 18" Tall, 5 $\frac{1}{4}$ " Base, 9" Top, Rare Dia. Rib Plunger Funeral Vase - Small Base Heat Check**
334. **M - 8" Rib & Panel Pinched Vase - 4 $\frac{1}{2}$ " Top, 3 $\frac{1}{4}$ " Base - Very Rare and Pretty**
335. **M - 9" Rib & Panel Vase - 3 $\frac{1}{2}$ " Base, 2 $\frac{1}{2}$ " Top**
336. W - Stalk Base, Corn Vase - Frosty
337. **Dark M - N 6 $\frac{1}{2}$ " Tornado Vase - Great Example**
338. **Ultra Rare P - 1 of 2, elec. Grape & Cable Vase - Chip on Inside of Foot - Outstanding Item**
339. M - 10" Acanthus Chop Plate - Multi Irid.
340. B - 9" Wind Flower Plate - Rare Dugan Blue
341. **A - 8 $\frac{1}{2}$ " Fanciful Plate - Hot Pattern**
342. Smoke - 9 $\frac{1}{2}$ " Imp. Pansy Low Ruffled Plate
343. M - 7 $\frac{3}{8}$ " Persian Med. Plate - Rare Size
344. **B - 7 $\frac{3}{8}$ " Elks 1911 Atlantic City Plate - Hot Item**
345. Dugan B - 9" Apple Blossom Twig Plate - Great One
346. G - N Stippled Grape & Cable Old Rose Distilling Plate
347. **Elec. B - Hearts & Flowers Compote - Super Irid. - Has Base Nick (Tiny)**
348. P.M. - Hearts & Flowers Compote
349. **Gorgeous Radium Elec. A - Imp. Pansy Bowl**
350. M - Stippled N 3-Fruits Plate - Pumpkin
351. A - PCE Nippon Bowl - BW Ext. - Super Example
352. **M - N Grape & Cable Spittoon Whimsey from Powder Jar - Side Flash Crack - Ultra Rare Pc.**
353. **P - N Grape & Cable Fernery - Very Scarce Item**
354. **Olive - N Grape & Cable 10 $\frac{1}{4}$ " Ftd. Fruit Bowl - Rare & Beautiful**
355. **I.B. - N Rose Show Plate - 9 $\frac{1}{2}$ ", Flat & Frosty**
356. W - N Rose Show Plate - 9 $\frac{1}{4}$ ", Beautiful Example
357. M - N Rose Show Plate - 9 $\frac{1}{4}$ ", Very Desirable
358. **G - N Ruffle Rose Show Bowl - Rare Color**
359. **Aqua Opal - N Ruffle Rose Show Bowl - Factory Flaw Ruffle - Still A Beauty**
360. Aqua Opal - N Ruffle Peacocks Bowl - Super Color - Repaired Tips
361. **Great Aqua Opal - N Beaded Cable Rose Bowl - Dark Feet - Almost Saph.**
362. **Aqua Opal - N Rd. Bushel Basket**
363. **Aqua Opal - N Rd. Bushel Basket w/Light M. Overlay**
364. **Aqua Opal - N Leaf Beads Rose Bowl - N Triple Signed**
365. M - Orange Tree Mug - 3" Base
366. M - Orange Tree Mug - 2 $\frac{1}{2}$ " Base
367. B - Orange Tree Mug - 2 $\frac{1}{2}$ " Base - Flared Top
368. B - Orange Tree Mug - 2 $\frac{1}{2}$ " Base - Straight Top
369. M - Vintage Banded Mug - Great Example
370. **M - Little Bo-Peep Mug - Base Roughness**
371. M - Imp. Robin Mug - Nice Old Example
372. **M - N Stippled Dandelion Mug - Scarce**
373. P - N Singing Birds Mug
374. M - N Singing Birds Mug
375. **Aqua Opal - N Singing Birds Mug - Lots of Opal**
376. **Aqua Opal - N Stippled Dandelion Mug - Great Rarity - Pastel**
377. Aqua Opal - N Fine Cut & Roses Ftd. Candy Bowl - Normal Ft. Chips - But, Opal Plus
378. **B - Lily of Valley Tumbler - Gold & Silver Irid.**
379. **B - Super Rare Mlbg. Hobnail Tumbler - WOW**
380. B - Blueberry Tumbler - Multi Elec.
381. **P - Imp. Octagon Tumbler - Very, Very Scarce**
382. **A - Radium Elec. Cambridge Near-Cut Inverted Strawberry Tumbler**
383. **P - Radium Elec. Imp. Windmill Tumbler**
384. A - Wreath Cherry Tumbler - Very Nice Example
385. Violet - Beaded Shell Tumbler - Unusual Color
386. **G - N Wishbone Tumbler**
387. M - N Wishbone Tumbler - A & B
388. P - N Acorn Burr Tumbler - A & B
389. **M - Mlbg. Feather & Heart Tumbler - A & B**
390. **A - Rare N Jockey Club Hand Grip Plate**
391. A - 6 $\frac{3}{4}$ " Grape Vine Lattice Elec. Plate
392. M - 7 $\frac{1}{4}$ " Grape Vine Lattice Flat Plate
393. M - 6 $\frac{1}{2}$ " Beautiful Imp. Grape Plate
394. P.M. - 6 $\frac{1}{4}$ " Persian Med. Plate

395. M - 7/4" Fishscale & Beads Plate
396. B - 6/4" Pine Cone Plate
397. **B - 7/4" 12-Sided Pine Cone Plate - Radium**
398. P.O. - CRE 6 1/2" Smooth Ray Plate
399. M - Light Opal Rim, 6 1/2" Four Flowers Plate
400. M - 7" Stipple Rays - Scale Band Ext. Plate
401. **Amberina Red - CRE, JIP, Fenton Holly Hat - Base Heat Checks**
402. **Brick Red - 7 1/2", 8-Ruffle Fenton Grape & Cable Bowl**
403. Red Amberina - 5 3/4" Imp. Stippled Rays - Scale Band Bowl
404. G - 10 1/4" Mlbg. Satin Rays & Ribbon Bowl - Ruffled
405. G - Mlbg. Ruffled Satin Trout & Fly Bowl
406. **RARE Lav. - Mlbg. 6 1/4", Small Mold, Peacock & Urn Plate - True Rarity - Flat One**
407. Lav. - Mlbg. 6" Peacock & Urn, Small Vt., Bowl
408. **Gorgeous Rare G - 9" Mlbg. Seaweed Plate - Multi Elec. Satin - Flat Beauty**
409. **A - 10 1/4" Mlbg. Ruffled 5-Star Mini Stars, Radium Bowl - A Dandy**
410. A - 7 1/4" ICS, Mlbg. Souvenir Courthouse Bowl - Radium
411. **A - 5", 3 1/2" Base, 4 1/2" Rd. Top, Mlbg. Vase? - Pattern Unknown, 1 of a Kind according to Britt & Moore - SUPER: See Photo - RARE**
412. M - Mlbg. Hobnail Spittoon - Nice Example
413. **A - N PCE Good Luck Vt. Bowl w/BW Back - Presznick Museum Sticker**
414. M - 9 3/4" Orange Tree Plate - Stretchy Blue, Pink, Gold Irid.
415. **A - 9" Captive Rose Plate - Beautiful Example**
416. **P - Imp. Six-Sided Candlesticks - Rare Beauties - Pr. - Electric Radium**
417. **M - Imp. Six-Sided Candlesticks - Rare Beauties - Pr. - Radium**
418. **M - Wild Rose Syrup Pitcher - Flash by Top of Handle - Very Rare Find - Birth Mark**
419. P - N Peacocks Bowl
420. G - N Grape & Cable Candle Lamp - Complete
421. **Extremely Rare M - Lg. N Grape & Cable Compote - Lid Rim Chip - Few Known**
422. **P - N Stipple 3-Fruits Plate - Above Average**
423. P - 9 1/2" Imp. Scroll Embossed Plate - Multi Elec.
424. **B - N Poppy Show Plate - Multi Elec.**
425. **P - 12 1/2" Square Ftd. Butterfly & Tulip Bowl - A Prize for any Collection**
426. I.G. - Peacocks Plate - Smooth Back - Pretty One
427. W - Peacocks Plate - Smooth Back - Pretty One
428. **B - N 9 1/4" Stippled Peacocks Plate**
429. P - N Peacocks Plate - Multi Elec.
430. **B - 9 3/4" Vintage Ftd. Plate - Elec. - 1 of a Kind? - Fernery Whimsey - WOW!**
431. A - 9" Six-Ruffle Vintage Bowl - Whimsey from Fernery
432. **B - Fenton Peacock at Urn Plate - Elec. Irid.**
433. **M - Fenton Peacock at Urn Plate - Pumpkin**
434. **M - Collar Base, Peacock & Grape Plate, 9 1/2" - Super Pretty**
435. **A - Mlbg. Cherries Milk Pitcher - 3/4" Base Chip - Still Rare Find**
436. P - Field Flowers Water Pitcher - Multi Elec. - Base Cracked - Best Irid. Ever Seen!
437. M - 9 1/2" Leaf Chain Plate - Buffed Edge
438. M - Spector's Dept. Store Plate - lg. Crack
439. P - N Grape & Cable 7 1/2" Plate - Lg. Base Chip
440. Lav. - 6 1/4" Grape & Cable Hand Grip Plate - Base Chips
441. G - Paneled Dandelion Tumbler - Base Crack
442. M - 9 1/2" Smooth Ray Plate - Rim Damage

**100 Plus Pieces Not Listed Sold
At End Of Catalog**

**CARNIVAL GLASS AUCTIONS
CALENDAR OF EVENT**

October 16, 1999

A.C.C.G.C. at Wichita, Kansas

November 13, 1999

at Boonville, Missouri

December 4, 1999

at Boonville, Missouri

January 8, Year 2000

at Boonville, Missouri

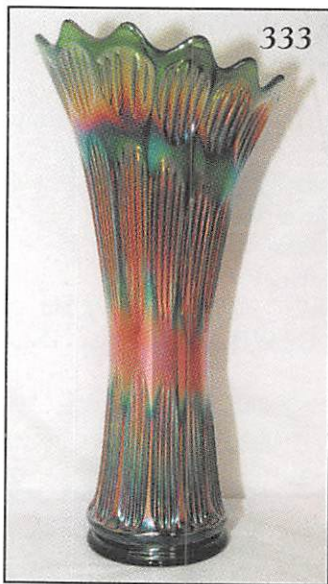
9th Annual Extravaganza

For Free Color Catalogs & Information Write:
Mickey Reichel

516 Third Street, Boonville, MO 65233-1536
or Call: 660-882-5292 days or 660-882-5283 evenings

If you haven't been to Boonville, Missouri and attended a Mickey Reichel Auction, I'm extending a special invitation to one of our very best yet.

Thank You, Mickey



333



375

376

377



361

362

364



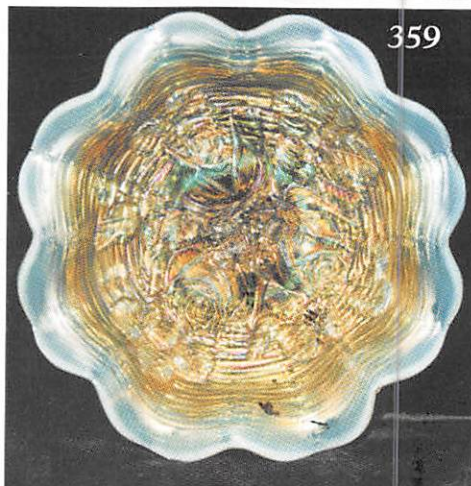
420



378

379

380



359

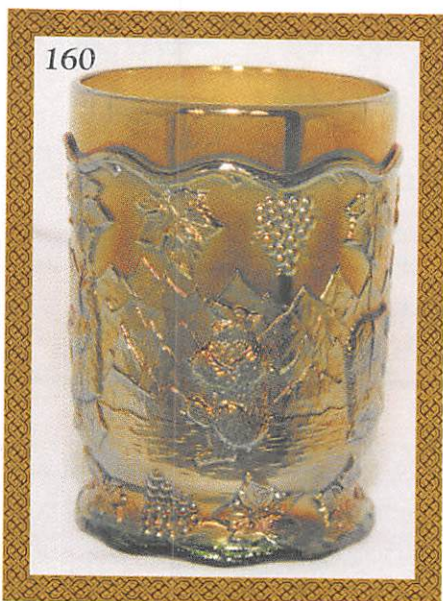


381

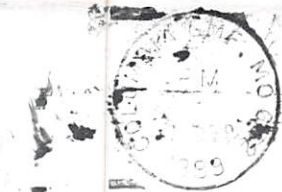
382

383

MICKEY REICHEL
ANTIQUE & AUCTION, L.C.
516 THIRD STREET
BOONVILLE, MO 65233-1536

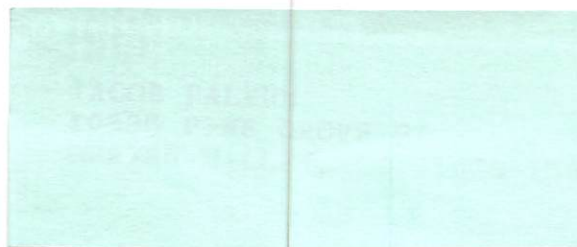


160



FIRST CLASS MAIL

SPECIAL INVITATION TO:



"EXCITEMENT BUILDS AS THE CROWD GATHERS AT THE MICKEY REICHEL AUCTION COMPANY!"