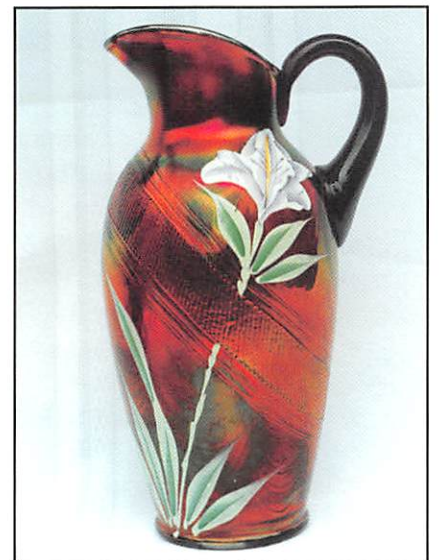
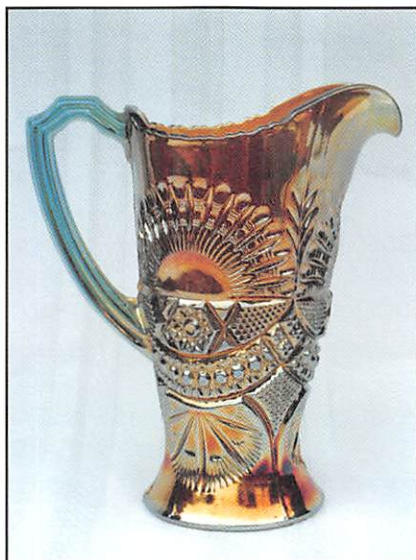


BURNS

AUCTION SERVICE



N.E.C.G.A.

Convention Auction

Friday, September 17, 1999

Auction 6:00 P.M.

Preview 4:00 P.M.

at the

Quality Inn & Conference Center

51 Hartford Turnpike (Rt. 83)

Vernon, Connecticut 06066

(800) 253-INNS or (860) 646-5700

Fax (860) 646-0202

Where did summer go? It's time for the Fall Brimfield Markets and with that is the Annual N.E.C.G.A. Convention. The Brimfield Flea Market starts on Tuesday morning, September 14 and through the week. The Convention will run in conjunction with the Markets, beginning on Wednesday evening with early birds and it gets going on Thursday, September 16. We have a really diversified selection to be sold at the Auction. Items include glass from California, Washington, and Argentina. There are some unusual items included and even some affordable damaged rarities. Should be something for everyone. Hope to see ya there!

The Quality Inn & Conference Center of Vernon, Connecticut will host the event. This will be a new facility for the Convention so it should be interesting to see the layout.

Directions: Traveling west, use I-84 to Hartford; take Exit 64. Take a right off the exit then a right at the first light (Rt. 83). There located about 1/2 mile down the street. Traveling east – take Exit 63 and then take a left off the exit – that is Route 83 – then look for the Inn.

For further information on the Convention call Alan Israelson at (508) 764-6074.

Mail bids are due by Tuesday September 14, 1999.

CHECK OUT BURNS AUCTION SERVICE ON THE WEB!

Visit our new Web site for information on upcoming auctions, complete auction listings and photos of auction highlights. You can e-mail your bids or requests for information.

<http://zeus.kspress.com/woodland/burnsauction> e-mail: brnzauctsv@aol.com

BURNS AUCTION SERVICE

Tom Burns
P.O. Box 608
Bath, New York 14810
(607) 776-7942

Bill Richards
44 Water St., Poland, OH 44514
(330) 757-2001
FAX (330)-757-4917

Bill Richards, III
2253 Country Lane
Poland, OH 44514
(330) 755-2620

Mail Bids honored under the following conditions.

1. No deposit required, Bidders will take full responsibility to honor any and all bids we execute for them. Payment in full plus postage and handling required after notification and before we ship any item to them.
2. Items are bid on in perfect condition with average or above average iridescence OR as listed in the brochures. Bids will not be carried out when damage on an item has been found during the auction. **PEOPLE PRESENT AT AUCTION ARE RESPONSIBLE FOR FINDING ANY PINHEADS, WEAR, SPOTTINESS, MANUFACTURER'S DEFECTS OR ANY OTHER MINOR FLAWS, ETC.**
3. Successful bidders will be notified by collect call from the auctioneer (**so be sure to include the phone number**).
4. Phone inquiries about the glass or any other questions are welcome.
5. If you have some other person at the auction bidding for you, they must pay for the item before taking it.
6. Any terms or conditions given the day of the auction will supersede any previously published information.
7. Mail, e-mail, fax and phone bids are due by Tuesday, September 14, 1999.

- | | |
|--|---|
| _____ 1. Imperial Octagon Stemmed Cordial Whimsey Rose Bowl – Crystal (unusual miniature; very different) | _____ 10. 14" TALL FENTON FINE RIB MID SIZE SWUNG VASE – AQUA OPAL. (EXTREMELY RARE ITEM; OPAL. ON EDGE; NICE) |
| _____ 2. M'burg Hobstar and Feather Oval Relish Tray – Crystal Frosted (scarce, chips) | _____ 11. M'BURG LEAF AND LITTLE FLOWERS STEMMED FLARED MINIATURE COMPOTE – DK. MARI. (VERY SCARCE AND DESIRABLE; SATINY) |
| _____ 3. M'burg Hobstar and Feather Lg. Ice Cream Bowl – Sun Colored Amyth. (crystal, not irid.; scarce color) | _____ 12. 8-1/2" M'burg Grape Wreath 6 Ruffled Bowl – Amyth. (super radium finish; very attractive) |
| _____ 4. N'wood G&C Ftd. Banana Boat – Crystal Decor. (scarce; has light cranb. flash and gold) | _____ 13. IMPERIAL INTERIOR PANELLED HANDLED FLOWER BASKET – PURP. (EXTREMELY RARE COLOR FOR THIS ITEM; NICE) |
| _____ 5. N GOOD LUCK RUFFLED BOWL W/ RIBBED EXT. – COBALT BLUE/ OPAL. (EXTREMELY RARE COLOR; FIRST I'VE SEEN; HAS DAMAGE ON EDGE) | _____ 14. N G&C Stemmed Sweetmeat Compote Whimsey – Amyth. (scarce and underpriced item; satiny finish) |
| _____ 6. Fenton Feather Stitch Bowl w/ 3 in 1 Edge – Mari. (very scarce shape for this pattern) | _____ 15. N LEAF AND BEADS FTD. ROSE BOWL – AQUA OPAL. (RARE AND DESIRABLE; NICE COLOR AND OPAL.) |
| _____ 7. Fenton Two Row Open Edge Ruffled Hat – Smokey/ Amyth. (very odd base color; unusual) | _____ 16. N DRAPERY ROSE BOWL – AQUA OPAL. (RARE AND DESIRABLE; NICE COLOR AND HAS BUTTERSCOTCH OVERLAY) |
| _____ 8. 10-1/2"-11" Tall Fenton Plain Swung Bud Vase – Dk. Mari. (nice color) | |
| _____ 9. 5-1/2" Tall Fenton Boggy Bayou Squatty Vase – Mari./ Clear | |

- _____ 17. **IMPERIAL OCTAGON TOOTHPICK HOLDER – DK. MARI. (VERY RARE ITEM; GREAT COLOR AND OLD!)**
- _____ 18. Maker (?) Heavy Shell Figural Toothpick Holder – White (unusual item w/ great irid.)
- _____ 19. European Heavy Vine Shot Glass of Toothpick Holder – Lt. Mari. (very scarce and desirable; nice)
- _____ 20. **FENTON ARCHED FLUTE STRETCH TOOTHPICK HOLDER – WISTERIA (RARE AND VERY DESIRABLE; GREAT ITEM)**
- _____ 21. **1908 SHRINERS SHEATH OF WHEAT TOOTHPICK HOLDER – CRANB. FLASH (RARE AND DESIRABLE; TOUGH ITEM TO FIND)**
- _____ 22. Imperial Flute Toothpick Holder – Purp. (scarce; nice color)
- _____ 23. Imperial Flute Toothpick Holder – Amyth. (scarce; nice color)
- _____ 24. Imperial Flute Toothpick Holder – Green (scarce; nice color)
- _____ 25. Imperial Flute Toothpick Holder – Dk. Mari. (scarce; nice color)
- _____ 26. Maker (?) Cigar Wrap Toothpick Holder – Lt. Mari. (unusual item; scarce novelty)
- _____ 27. Maker (?) Pattern (?) Whimsey Swung Vase From Toothpick Holder – Lt. Mari. (rare and very desirable)
- _____ 28. Pr. Crackle Perfume Bottles w/ Blue Stoppers – Lt. Mari. (very unusual items; selling so much each)
- _____ 29. Golden Wedding 1/10 Pint “Nip” Bottles – Lt. Mari. (scarce item)
- _____ 30. **N PEACOCK AT THE URN LG. ICE CREAM BOWL – ICE GREEN (RARE AND DESIRABLE; NICE COLOR AND IRID.; NICE!)**
- _____ 31. **N EIGHT SIDED HANDLED BUSHEL BASKET – SEAFOAM GREEN (EXTREMELY RARE BASE COLOR; VERY UNUSUAL)**
- _____ 32. N Nippon 8 Ruffled Bowl w/ Ribbed Ext. – Ice Green (rare and very desirable; has small flake on edge)
- _____ 33. N Nippon 8 Ruffled Bowl w/ Basketweave Ext. – Green (very scarce; nice color)
- _____ 34. 10" Tall N Fine Rib Swung Vase – Amyth. (nice color)
- _____ 35. **N G&C TABLE SIZE PUNCH BOWL AND BASE – ICE GREEN (A DAMAGED RARITY; STILL DESIRABLE; HAS DAMAGED TOP; PERFECT BASE)**
- _____ 36. **N G&C TABLE SIZE PUNCH BOWL AND BASE – PURP. (PERFECT W/ NICE MULTI-COLORED IRID.; ATTRACTIVE)**
- _____ 37. N G&C Covered Butter Dish – Purp. (scarce w/ nice color and irid.)
- _____ 38. N G&C Covered Sugar Bowl – Purp. (scarce w/ nice color and irid.)
- _____ 39. N G&C Handled Creamer – Purp. (scarce w/ nice color and irid.)
- _____ 40. N G&C Spooner – Purp. (scarce w/ nice color and irid.)
- _____ 41. **N G&C WHISKEY DECANTER AND STOPPER – MARI. (VERY SCARCE AND DESIRABLE; STOPPER A BIT DARKER)**
- _____ 42. N G&C Covered Sweetmeat Compote – Purp. (very scarce and attractive; nice color and irid.)
- _____ 43. (4) N Memphis Handled Punch Cups – Purp. (nice color and condition; selling so much each for set)
- _____ 44. N Singing Birds Handled Spooner – Dk. Mari. (scarce part w/ great color and irid.)
- _____ 45. **N CORN VASE W/ STALK BASE – LIME ICE GREEN (VERY SCARCE AND VERY DESIRABLE; NICE COLOR AND IRID.)**
- _____ 46. N Beads 8 Ruffled Bowl – Green
- _____ 47. N Rosette Ftd. Deep Ruffled Bowl w/ Ruffles and Rings Ext. – Purp. (satiny irid.)
- _____ 48. N Beaded Cable Ftd. Rose Bowl – Green (a super example w/ great irid.; has a tiny chip on one toe)
- _____ 49. N Beaded Cable Ftd. Rose Bowl w/ Ribbed Int. – Green (irid. on inside)
- _____ 50. **N HEARTS AND FLOWERS BOWL W/ P.C.E. AND RIBBED EXT. – ICE GREEN (RARE AND VERY DESIRABLE; HAS MANUF. CHECK IN BASE)**
- _____ 51. N Sunflower Ftd. Deep 8 Ruffled Bowl w/ Meander Ext. – Ice Blue (rare item but has a chip on point of edge)
- _____ 52. 8" Tall N Drapery Swung Vase – Ice Blue (rare and desirable; nice irid.; has small chip on one toe)
- _____ 53. N Fine Cut and Roses Ftd. Ruffled Candy Dish w/ Fancy Int. – Aqua Opal. (rare and very desirable; super opal. and irid.; has a manuf. separation on edge)
- _____ 54. N Fine Cut and Roses Ftd. Ruffled Candy Dish w/ Fancy Int. – Horehound (very rare base color w/ super irid.; has slight roughness on feet)
- _____ 55. N Strawberry Stippled Bowl w/ P.C.E. and Ribbed Ext. – Blue (rare item; nice color; has chipped base)
- _____ 56. N Fern Brand Chocolates Flat Plate – Purp. (rare; an attractive example; has a chip on the base)
- _____ 57. N Ivy Town Pump – Purp. (rare item w/damage on base and near spout)
- _____ 58. N Tornado Vase – Dk. Mari. (another rare and desirable item; has a chip on collar base)
- _____ 59. Dugan Single Flower 10 Ruffled Bowl – P. Opal. (nice color and opal.)
- _____ 60. **DUGAN STIPPLED PETALS RUFFLED 2 SIDED FLOWER BASKET – P. OPAL. (EXTREMELY RARE ITEM TO FIND; PERFECT W/ GREAT COLOR AND OPAL.; A REAL TOUGHIE)**
- _____ 61. **DUGAN CAROLINE HANDLED FLOWER BASKET – P. OPAL. (VERY RARE AND DESIRABLE; PERFECT W/ NICE COLOR AND OPAL.)**
- _____ 62. **DUGAN FISHNET 2 PC. RUFFLED EPERGNE – P. OPAL. (VERY SCARCE; NICE IRID. AND OPAL.; ANOTHER TOUGHIE)**
- _____ 63. 8-1/2" Dugan Apple Blossom Low Ruffled Plate – P. Opal. (scarce; nice opal. and irid.)
- _____ 64. Dugan Fan Ftd. Round Bowl – P. Opal. (scarce item w/ great opal.; perfect)
- _____ 65. **N ORIENTAL POPPY 7 PC. TANKARD WATER SET – PURP. (RARE AND DESIRABLE SET; PITCHER IS SUPER!)**
- _____ 66. **N HEARTS AND FLOWERS FLAT PLATE W/ RIBBED EXT. – PURP. (RARE AND VERY DESIRABLE; AN EXCELLENT EXAMPLE W/ GREAT COLOR AND IRID.)**
- _____ 67. **N'WOOD FLUTED SCROLLS SPITTOON OR SPOONER – LT. MARI. (VERY RARE AND VERY DESIRABLE; LIGHTER COLOR BUT A RARE ITEM)**
- _____ 68. M'burg Feather and Heart Handled Water Pitcher – Mari. (scarce; nice color and irid.; desirable)
- _____ 69. M'burg Diamond Tumbler – Mari. (nice color and irid.)

- _____ 70. **FENTON BLUEBERRY HANDLED BULBOUS WATER PITCHER – BLUE (RARE AND VERY DESIRABLE; PERFECT W/ NICE GOLD HIGHLIGHTS)**
- _____ 71. Fenton Butterfly and Berry Handled Water Pitcher – Mari. (nice color and irid.)
- _____ 72. Fenton Butterfly and Berry Tumbler – Mari. (satiny finish)
- _____ 73. Fenton Apple Tree Handled Bulbous Water Pitcher – Blue (Cracked, but a very attractive shelf piece)
- _____ 74. Fenton Magnolia and Drape Enameled Decorated Bulbous Water Pitcher – Mari. (nice color w/ excellent decoration)
- _____ 75. **FENTON FENTONIA HANDLED WATER PITCHER – BLUE (RARE AND VERY DESIRABLE; AN EXCELLENT EXAMPLE)**
- _____ 76. Fenton Fentonia Tumbler – Blue (scarce; nice color and irid.)
- _____ 77. Fenton Fentonia Tumbler – Mari. (scarce w/ nice color)
- _____ 78. Fenton Leaf Tiers Ftd. Tumbler – Mari. (very scarce item w/ nice color)
- _____ 79. Fenton Apple Tree Tumbler – Mari. (satiny finish)
- _____ 80. **DUGAN SOUTACHE DOMED 6 RUFFLED BOWL – P. OPAL. (VERY SCARCE PATTERN; NICE COLOR AND IRID.)**
- _____ 81. 6-1/2" Dugan Bellflower Ruffled Bowl – P. Opal. (nice opal.)
- _____ 82. **DUGAN HONEYCOMB ROSE BOWL – P. OPAL. (VERY SCARCE; ACTUALLY AN EXCELLENT EXAMPLE)**
- _____ 83. Dugan Interior Swirl Tri-Cornered Rose Bowl – P. Opal. (scarce w/ nice color and irid.)
- _____ 84. Dugan Interior Swirl Tri-Cornered Spitoon Shaped Rose Bowl – P. Opal. (scarce w/ nice color and opal.)
- _____ 85. Dugan Interior Swirl Bulbous Vase – P. Opal. (super example; nice color and opal.)
- _____ 86. Dugan Cherry Wreath Ind. Berry Bowl – P. Opal. (scarce item)
- _____ 87. Dugan Wishbone and Spades 8 Ruffled Sauce – P. Opal. (nice color; pretty nice example)
- _____ 88. Dugan Ski Star Lg. 6 Ruffled Bowl w/ Compass Ext. – P. Opal. (nice color and quality)
- _____ 89. Dugan Question Mark 2 Handled Stemmed Bon Bon – P. Opal. (super example)
- _____ 90. Dugan Single Flower Framed Crimped Tri-Cornered Bowl – P. Opal. (scarce; nice color and opal.)
- _____ 91. Dugan Holly Whirl 6 Ruffled Bowl – P. Opal. (nice opal. and irid.)
- _____ 92. Dugan Folding Fan Stemmed 6 Ruffled Crimped Compote – P. Opal. (nice opal. and irid.)
- _____ 93. Dugan Double Stem Rose Domed 10 Ruffled Compote – P. Opal. (nice opal.)
- _____ 94. Dugan Starfish Stemmed 8 Ruffled Compote – P. Opal. (nice opal. and irid.)
- _____ 95. **DUGAN FANCIFUL LOW RUFFLED PLATE – P. OPAL. (VERY SCARCE; NICE IRID.; OPAL. NEAR EDGE)**
- _____ 96. **DUGAN VINING TWIGS 8 RUFFLED HAT – DK. P. OPAL. (EXCELLENT EXAMPLE OF A PRETTY SCARCE ITEM)**
- _____ 97. Dugan Circle Scroll Ind. Berry Bowl – Mari. (nice color)
- _____ 98. Dugan Windflower Low Ruffled Bowl – Mari.
- _____ 99. Dugan Wild Rose 3 Ftd. Nut Bowl – Mari. (a rare pattern not often sold; satiny)
- _____ 100. **9-1/2"-10" DUGAN PETAL AND FAN LG. ICE CREAM BOWL W/ JEWEL HEART – WHITE (RARE COLOR AND A RARE SHAPE W/ GREAT IRID.)**
- _____ 101. 7-1/2" Dugan Grapevine Lattice Low Ruffled Bowl/ Plate – White (super irid.)
- _____ 102. Dugan Quill Tankard Handled Water Pitcher – Purp. (another affordable rarity; cracked but attractive)
- _____ 103. 6" Dugan Heavy Grape 8 Ruffled Sauce w/ Compass Ext. – Purp. (very scarce and desirable; a nice example)
- _____ 104. 6" Dugan Pods and Posies 6 Ruffled Sauce – Purp. (super color and irid.; a nice example)
- _____ 105. **U.S. GLASS PALM BEACH HANDLED WATER PITCHER – HONEY AMBER (VERY SCARCE ITEM; PERFECT W/ GREAT IRID.)**
- _____ 106. Jenkins Field Thistle Handled Water Pitcher – Lt. Mari. (actually quite a scarce item; light color)
- _____ 107. **DUGAN FLORAL AND GRAPE BULBOUS HANDLED WATER PITCHER – WHITE (SUPER EXAMPLE W/ GREAT IRID.; SORTA CLEAR)**
- _____ 108. Dugan Floral and Grape Bulbous Handled Water Pitcher – Mari.
- _____ 109. Dugan Stork and Rushes Tumbler – Blue.
- _____ 110. **DUGAN STORK AND RUSHES HANDLED WATER PITCHER – BLUE (RARE ITEM; GREAT COLOR AND DETAIL; NICE)**
- _____ 111. **IMPERIAL FASHION HANDLED WATER PITCHER – SMOKE (RARE ITEM; NICE EXAMPLE W/ EXCELLENT COLOR)**
- _____ 112. Imperial Fashion Tumbler – Smoke (scarce item; nice color and perfect)
- _____ 113. Imperial Soda Gold Handled Water Pitcher – Smoke (scarce item and underpriced; nice)
- _____ 114. Imperial Soda Gold Tumbler – Smoke (scarce; nice color and irid.)
- _____ 115. **IMPERIAL WAFFLE BLOCK HANDLED WATER PITCHER – CLAMB. (RARE ITEM; NOT OFTEN FOUND; NICE)**
- _____ 116. **IMPERIAL WAFFLE BLOCK TUMBLER – CLAMB. (RARE IN ITS OWN RIGHT; NICE IRID.)**
- _____ 117. Imperial Windmill Mid-Size Handled Water Pitcher – Dk. Mari. (nice color and irid.)
- _____ 118. Imperial Windmill Tumbler – Mari. (nice detail)
- _____ 119. Imperial Tiger Lily Handled Water Pitcher – Mari. (nice detail and color)
- _____ 120. **IMPERIAL GRAPE WINE DECANTER AND STOPPER – PURP. (SUPER COLOR AND IRID.; THESE ARE WELL WORTH THEIR MONEY)**
- _____ 121. Imperial Field Flower Tumbler – Purp. (very scarce item; nice color and irid.)
- _____ 122. Imperial Hobstar Band Tumbler – Mari.
- _____ 123. **IMPERIAL LUSTRE ROSE FTD. CENTERPIECE BOWL – PURP. (VERY RARE ITEM; SUPER COLOR AND IRID.; HAS 2 CHIPS)**
- _____ 124. Imperial Columbia Ftd. 6 Ruffled Vase – Dk. Mari. (super color and irid.; nice)
- _____ 125. **IMPERIAL CORN BOTTLE – DK. MARI. (RARE AND VERY DESIRABLE; SUPER ITEM)**
- _____ 126. (2) Imperial Corn Bottles – Helios Green (rare items; selling choice)
- _____ 127. 5" Imperial Open Rose 8 Ruffled Sauce – Pastel Mari. (super irid.)

- _____ 128. 10"-11" Imperial Open Rose Lg. 8 Ruffled Bowl – Smoke (scarce item; nice)
- _____ 129. Imperial Tiger Lily 7 Pc. Water Set – Mari. (nice color and irid.)
- _____ 130. **IMPERIAL FLORAL AND OPTIC FTD. 9 RUFFLED ROSE BOWL – MARI./ MILK GLASS (SCARCE ITEM W/ GREAT COLOR AND IRID.)**
- _____ 131. Imperial Double Dutch/ Floral and Optic Ftd. Ruffled Bowl – Dk. Mari. (super color and irid.)
- _____ 132. **IMPERIAL OPTIC AND BUTTONS CUP AND SAUCER – DK. MARI. (RARE AND UNUSUAL ITEM; CUP SIGNED W/ IRON CROSS)**
- _____ 133. Imperial Flute and Cane Stemmed Sherbet – Mari. (scarce item w/ nice color)
- _____ 134. 7-1/2"-8" Imperial Heavy Grape Plate – Mari. (nice color)
- _____ 135. **9" IMPERIAL OPEN ROSE FLAT PLATE – PURP. (RARE ITEM; HAS SUPER MULTI-COLORED IRID.; A REAL BEAUT!)**
- _____ 136. **9" IMPERIAL SAND AND SHELL FLAT PLATE – HELIOS GREEN (RARE AND VERY DESIRABLE; TOUGH IN ANY COLOR)**
- _____ 137. European Laurel and Bows Stemmed Cake Plate – Mari. (rare item not often sold; very different)
- _____ 138. European Laurel and Bows Stemmed Round Compote – Mari. (rare item in this shape; nice color)
- _____ 139. European Laurel and Bows Stemmed Ruffled Compote – Mari. (very scarce; same pattern as above)
- _____ 140. **EUROPEAN PINEAPPLE AND FAN 3 PC. TUMBLE UP SET – MARI. (RARE ITEM COMPLETE W/ UNDER PLATE; GREAT SET)**
- _____ 141. **EUROPEAN COLONIAL BAND 3 PC. TUMBLE UP SET – MARI. (ANOTHER RARE SET COMPLETE W/ UNDER PLATE)**
- _____ 142. Imperial Star and File 8 Pc. Wine Set – Mari. (complete set w/ nice color and irid.)
- _____ 143. European C R Ashtray – Mari. (unusual novelty w/ great color; unusual)
- _____ 144. European Curved Star Covered Marmalade – Mari. (actually quite a rare item; first I've seen)
- _____ 145. **(CAMBRIDGE?) BUZZ SAW HANDLED WATER PITCHER – MARI. (NOT SURE OF MAKER BUT IS A RARE PATTERN)**
- _____ 146. **(2) (CAMBRIDGE) BUZZ SAW TALL LEMONADE GLASSES – MARI. (SAME AS ABOVE; RARE ITEMS; SELLING CHOICE)**
- _____ 147. (6) (Cambridge) Buzz Saw Stemmed Goblets – Mari. (rare items; selling choice; nice color)
- _____ 148. **EUROPEAN GRAND THISTLE HANDLED WATER PITCHER – BLUE (RARE ITEM; NICE COLOR AND DETAIL)**
- _____ 149. (2) European Grand Thistle Tumblers – Blue (very scarce items; selling choice)
- _____ 150. **EUROPEAN RISING SUN HANDLED WATER PITCHER – AQUA (FIRST REPORTED IN THIS COLOR; VERY RARE AND VERY ATTRACTIVE)**
- _____ 151. Piccardo Graceful Handled Water Pitcher – Blue (rare and unusual pattern; cracked at base)
- _____ 152. **BROCKWITZ DIAMOND CUT SHIELD 7 PC. WATER SET – MARI. (EXTREMELY RARE SET TO FIND COMPLETE; NICE)**
- _____ 153. 19-1/2" Tall Fenton Rustic Swung Funeral Vase – Blue (very scarce and very desirable; nice satiny finish)
- _____ 154. 12"-14" European Fluer de Lei Lg. Flared Bowl – Mari. (rare and very unusual item; massive and nice)
- _____ 155. **10-1/2" TALL EUROPEAN FLUER DE LEI LARGE CYLINDER VASE – DK. MARI. (RARE AND EXTREMELY DESIRABLE; HAS ROUGH CHIPS AT BASE)**
- _____ 156. 7"-8" Tall European Fluer De Lei Squatty Vase – Amber/ Clear Irid. (really odd item; clear w/ amber stain and iridized; unusual)
- _____ 157. **12" TALL EUROPEAN FINE CUT DIAMOND LARGE CYLINDER VASE – MARI. (RARE AND UNUSUAL; A REALLY NEAT ITEM; NICE)**
- _____ 158. **9" TALL EUROPEAN ACANTHUS VASE – MARI. (WHAT AN ATTRACTIVE ITEM; GREAT COLOR AND REALLY, REALLY NICE)**
- _____ 159. Sowerby Covered Swan Butter Dish – Dk. Mari. (scarce color and is in really nice shape)
- _____ 160. **M'BURG ROSILAND SMALL STEMMED 6 RUFFLED COMPOTE – GREEN (RARE AND VERY DESIRABLE; PERFECT AND SATINY)**
- _____ 161. **9-1/2" M'BURG FLUER DE LEI BOWL W/ 3 IN 1 EDGE – AMYTH. (SUPER, SUPER RADIUM FINISH; MAY HAVE SMALL NICK)**
- _____ 162. **WESTMORELAND LOUISA FTD. 6 RUFFLED BOWL – P. OPAL. (RARE PATTERN IN THIS COLOR; SUPER OPAL.)**
- _____ 163. Westmoreland File and Fan Stemmed Flared Compote – P. Opal. (very scarce w/ super opal.; nice irid.)
- _____ 164. Westmoreland Leaf Swirl Stemmed Ruffled Compote – Amyth. (nice example)
- _____ 165. **U.S. GLASS COSMOS AND CONE "PUNCH BOWL" SHAPED COMPOTE – MARI. (VERY SCARCE SHAPE FOR THIS PATTERN; NICE COLOR AND IRID.)**
- _____ 166. 8-1/2"-9" Tall Dugan Venetian Line Large Tri-Cornered Pinched in Ruffled Vase – Amyth. (one of the larger examples; nice color complete w/ frit)
- _____ 167. 8" N'wood Stretch Ice Cream Shaped Bowl w/ Tree of Life Base – Wisteria (rare and desirable item; has 2 dings on edge)
- _____ 168. Fenton Stretch Engraved Grape 1/4-Lb. Covered Candy Jar – Ice Green (scarce item; nice color w/ gold trim)
- _____ 169. **FENTON STRETCH DOUBLE DOLPHIN LG. FTD. OBLONG CENTER BOWL – VELVA ROSE (VERY DESIRABLE; GREAT DETAIL AND IRID.; NICE)**
- _____ 170. **FENTON STRETCH DOUBLE DOLPHIN LG. FTD. 2 SIDED CENTER BOWL – ICE BLUE (A SUPER EXAMPLE IN A RARE SHAPE; REALLY NICE)**
- _____ 171. Fenton Stretch Double Dolphin Stemmed 2 Sided Compote – Ice Green (scarce item w/ nice detail; small chip on edge)
- _____ 172. **FENTON STRETCH DOUBLE DOLPHIN FTD. FAN VASE – TANGERINE (RARE ITEM W/ GREAT COLOR AND IRID.)**

- _____ 173. 9" Fenton Stretch Mellon Rib Lg. Flared Bowl – Tangerine (very desirable item in this color)
- _____ 174. **15" TALL FENTON STRETCH INTERIOR RIPPLE MID SIZE VASE – TANGERINE (RARE COLOR FOR THIS ITEM; GREAT PIECE)**
- _____ 175. **FENTON STRETCH 2 PC. TUMBLE UP – TANGERINE (FIRST I'VE SEEN IN THIS RARE COLOR; REALLY NEAT)**
- _____ 176. Fenton Stretch Mayonnaise or "Littlest Punch Bowl" – Ice Green (nice color and irid.)
- _____ 177. Fenton Stretch Lemon Server – Vaseline (nice color)
- _____ 178. Fenton Stretch Base to Panelled Covered Candy Jar – Velva Rose (where's the lid?)
- _____ 179. Fenton Stretch Base to 2 Pc. Tumble Up – Celeste Blue (where's the glass?)
- _____ 180. **N'WOOD STRETCH PANELLED COVERED CANDY JAR – WISTERIA (RARE ITEM IN THIS COLOR; LID AND BASE COULD MATCH BETTER!)**
- _____ 181. Fenton Stretch Fan Vase w/ Sterling Ship Overlay – Ice Green (unusual item; ship decoration is great!)
- _____ 182. **(2) FENTON STRETCH ROSE SPRAY J.I.P. STEMMED COMPOTES – CELESTE BLUE (SELLING CHOICE; BOTH ARE NICE EXAMPLES)**
- _____ 183. Pair 6-1/2" Tall Fenton Bell Shaped Candlesticks – Vaseline (desirable color for these items)
- _____ 184. N'wood Stretch Lg. Paneled Covered Candy Jar Cathedral Shape – Ice Green (desirable item; nice color and irid.)
- _____ 185. **9-1/2" N'WOOD STRETCH 2 SIDED BANANA DISH ON TREE BARK BASE – WISTERIA (SUPER ITEM IN A GREAT SHAPE; IRID. IS A WOW)**
- _____ 186. N'wood Stretch 4 Sided Rose Bowl on Tree Bark Base – White (rare and unusual shape for this item)
- _____ 187. **7-1/2" FENTON LEAF CHAIN 6 RUFFLED BOWL – ICE GREEN (EXTREMELY RARE ITEM; HAS A 3/4" CHECK IN BASE)**
- _____ 188. **FENTON THREE ROW OPEN EDGE 2 SIDED BASKET – CELESTE BLUE (SUPER EXAMPLE; PERFECT W/ GREAT COLOR AND IRID.)**
- _____ 189. **FENTON TWO ROW OPEN EDGE LARGE SIZE 2 SIDED BASKET – CELESTE BLUE (RARE AND DESIRABLE; GREAT COLOR AND IRID.)**
- _____ 190. **FENTON TWO ROW OPEN EDGE LARGE SIZE 4 SIDED BASKET – CELESTE BLUE (ANOTHER VERY DESIRABLE ITEM; GREAT COLOR AND IRID.)**
- _____ 191. **FENTON THREE ROW OPEN EDGE LOW 8 RUFFLED BASKET ON METAL BASE – CELESTE BLUE (UNUSUAL COMBINATION; GREAT COLOR AND IRID.)**
- _____ 192. **FENTON THREE ROW OPEN EDGE LG. 8 RUFFLED BASKET – ICE GREEN (RARE AND VERY DESIRABLE; NICE COLOR AND GREAT IRID.)**
- _____ 193. (2) Fenton Kittens 2 Sided Banana Dishes – Dk. Mari. (very desirable; selling choice)
- _____ 194. Fenton Kittens 6 Ruffled Bowl – Dk. Mari. (scarce; nice color and irid.)
- _____ 195. **FENTON DIAGONAL BAND ENAMELED DECORATED TANKARD PITCHER W/ IRIS – AMYTH. (RARE AND VERY DESIRABLE; A SUPER EXAMPLE W/ GREAT IRID.)**
- _____ 196. Fenton Blackberry 2 Row Open Edge Hat – Green (very scarce; nice color and irid.)
- _____ 197. Fenton Holly Stemmed 6 Ruffled Compote – Green (very scarce base color; nice irid.)
- _____ 198. Fenton Ragged Robin Bowl w/ 3 in 1 Edge – Green (very scarce pattern; great detail and irid.)
- _____ 199. 8-1/2" Fenton Persian Medallion Round Bowl w/ Tight Crimped Edge – Green (scarce item in this shape and color)
- _____ 200. **9" FENTON PERSIAN MEDALLION FLAT PLATE – BLUE (VERY SCARCE; TYPICAL SILVERY IRID.)**
- _____ 201. 9"-9-1/2" Fenton Orange Tree Flat Plate – Mari. (scarce and desirable; nice irid.)
- _____ 202. 11"-12" Fenton Stag and Holly 8 Ruffled Ball Ftd. Bowl – Mari. (nice color and irid.)
- _____ 203. 8-1/2" Fenton Captive Rose Round Bowl w/ Tight Crimped Edge – Dk. Mari. (scarce; nice color and irid.)
- _____ 204. 7-1/2" Fenton Lotus and Thistle Deep 6 Ruffled Bowl – Mari. (scarce pattern)
- _____ 205. **7-1/2" FENTON LEAF CHAIN 6 RUFFLED BOWL – RED (VERY RARE AND VERY DESIRABLE; NICE EXAMPLE)**
- _____ 206. **FENTON BLACKBERRY SPRAY J.I.P. CRIMPED EDGE HAT – RED (SUPER EXAMPLE; NICE BASE COLOR AND IRID.)**
- _____ 207. 9" Fenton Dragon and Lotus 8 Ruffled Bowl – Red (excellent example but has chips along edge)
- _____ 208. **FENTON STRAWBERRY 2 HANDLED BON BON – REVERSE AMBERINA (VERY SCARCE AND ATTRACTIVE; NICE)**
- _____ 209. Fenton Strawberry 2 Handled Bon Bon – Mari./ Vaseline (scarce base color; tough to find)
- _____ 210. **FENTON BUTTERFLY AND BERRY 8 PC. WATER SET – BLUE (RARE TO FIND A COMPLETE SET; SATINY AND WELL MATCHED)**
- _____ 211. 7" Fenton Coin Dot Deep Round Bowl – Mari./ Lime Green (scarce base color)
- _____ 212. **FENTON LOTUS AND POINSETTIA FTD. RUFFLED SAUCE – ICE GREEN OPAL. (VERY RARE ITEM IN THIS COLOR; HAS A TINY NICK ON ONE FOOT)**
- _____ 213. 6-1/2" Fenton Acorn Deep Round Bowl – Mari./ Moonstone (very scarce; nice, dark irid.)
- _____ 214. Fenton Enameled Cherries 8 Pc. Bulbous Water Set – Blue (scarce set; complete and nice)
- _____ 215. Fenton Panther Ftd. Ruffled Master Berry Bowl – Mari.
- _____ 216. Fenton Panther Ftd. Round Ind. Berry Bowl – Mari.
- _____ 217. 9-1/2" Fenton Two Flowers Ball Ftd. Ruffled Bowl – Mari. (really nice color and irid.)
- _____ 218. 7-1/2" Fenton Peacock and Dahlia IC Shaped Bowl – Mari. (satiny finish)
- _____ 219. Fenton Cherry Circles 2 Handled Round Bon Bon – Blue (nice color and irid.)
- _____ 220. 9-1/2"-10" Fenton Feathered Serpent 6 Ruffled Bowl – Amyth. (satiny finish)
- _____ 221. 9" Fenton Autumn Acorn 6 Ruffled Bowl – Blue (nice example)

- _____ 222. Fenton Holly 4 Sided Hat w/ Manuf. Ground Base – Blue (really nice irid.)
- _____ 223. 1911 Atlantic City Elks Handled Bell – Blue (silvery and cracked)
- _____ 224. 10-1/2" Fenton April Showers Swung Vase – Green (satiny finish)
- _____ 225. 9-1/2" Fenton Diamond Rib Swung Vase – Green (satiny finish)
- _____ **226. 9" FENTON LEAF CHAIN FLAT PLATE W/ BERRY EXT. – BLUE (RARE AND VERY DESIRABLE W/ GREAT IRID.)**
- _____ 227. N G&C Large Ruffled Master Berry Bowl w/ 6 Ind. Bowls w/ Basketweave Ext. – Amyth. (scarce set; complete and perfect)
- _____ 228. Imperial Pansy Ruffled Relish Tray – Amber (scarce color)
- _____ **229. 8-1/2"-9" DUGAN ROUND UP LOW RUFFLED BOWL/ PLATE – P. OPAL. (SCARCE W/ NICE OPAL. AND IRID.)**
- _____ **230. 7-1/2" IMPERIAL HEAVY GRAPE FLAT PLATE – AMBER (VERY SCARCE AND ATTRACTIVE; NICE)**
- _____ **231. DUGAN SIX PETALS 6 RUFFLED CRIMPED EDGE BOWL – PURP. (NICE COLOR AND IRID.; HAS SUPER ELECTRIC BLUE HIGHLIGHTS)**
- _____ 232. N Three Fruits Medallion Spatula Ftd. Ruffled Bowl – Green (nice satiny finish)
- _____ 233. 7" N G&C 6 Ruffled Bowl w/ Basketweave Ext. – Green (nice color)
- _____ 234. 9-1/2" Dugan Cosmos Variant Low 10 Ruffled Bowl – Purp. (scarce color)
- _____ 235. Dugan Six Petals 6 Ruffled Bowl – Purp. (nice color and irid.)
- _____ 236. 10" N Wishbone Bowl w/ P.C.E. and Basketweave Ext. – Mari. (scarce; has nice satiny finish)
- _____ 237. N Wishbone 8 Ruffled Ftd. Bowl – Purp. (satiny and nice)
- _____ 238. N Three Fruits Bowl w/ P.C.E. and Basketweave Ext. – Mari. (satiny finish)
- _____ 239. 9" N G&C Plate w/ Basketweave Ext. – Green (scarce; nice color and irid.)
- _____ **240. DUGAN MANY FRUITS RUFFLED PUNCH BOWL AND BASE – PURP. (RARE AND DESIRABLE; NICE COLOR AND IRID.)**
- _____ 241. Dugan Many Fruits 8 Pc. Round Punch Set – Mari. (very scarce set; nice color and irid.)
- _____ 242. 7-1/2" Fenton Peacock and Dahlia IC Shaped Bowl – Mari. (scarce)
- _____ 243. 9" Fenton Orange Tree Flat Plate – Clamb. (very scarce; nice color and irid.)
- _____ 244. N Wishbone Ftd. Ruffled Bowl – Mari. (satiny)
- _____ **245. 9-1/2" N FRUIT AND FLOWERS LG. BOWL W/ P.C.E. AND BASKETWEAVE EXT. – PURP. (ACTUALLY QUITE A RARE ITEM IN THIS SHAPE)**
- _____ 246. 9" N G&C Variant Plate w/ Plain Ext. – Purp. (scarce; nice color and irid.)
- _____ 247. Dugan Six Petals Tri-Cornered Bowl – Purp. (nice color and irid.)
- _____ **248. AUSTRALIAN NESTING SWAN LG. 16 RUFFLED BOWL – PURP. (RARE AND DESIRABLE; NICE COLOR AND DETAIL)**
- _____ 249. 7" N G&C Ruffled Bowl w/ Basketweave Ext. – Pastel Mari. (super irid.)
- _____ **250. N THREE FRUITS RUFFLED BOWL W/ BASKETWEAVE EXT. – SMOKEY LAVENDER (RARE AND DESIRABLE BASE COLOR; NICE)**
- _____ 251. 9" Imperial Grape Flat Plate – Mari. (nice color)
- _____ 252. Dugan Border Plants Domed 10 Ruffled Bowl – Purp. (very scarce and desirable; nice)
- _____ **253. DUGAN FISHNET 2 PC. 10 RUFFLED EPERGNE – PURP. (VERY SCARCE; NICE COLOR AND SATINY FINISH)**
- _____ **254. DUGAN BUTTERFLY AND TULIP 2 SIDED LG. FTD. BOWL – MARI. (VERY SCARCE; NICE COLOR AND DETAIL)**
- _____ **255. N FRUIT AND FLOWER STEMMED HANDLED BON BON – ELEC. BLUE (SUPER COLOR; VERY DESIRABLE)**
- _____ **256. 10"-11" TALL N FINE RIB SWUNG VASE – ICE GREEN (RARE COLOR FOR THIS ITEM; NOT MANY SOLD; SMALL CHIP ON BASE)**
- _____ 257. Fenton Bird and Cherries 2 Sided Handled Bon Bon – Blue (nice irid.)
- _____ 258. 7-1/2" Imperial Heavy Grape Flat Plate – Mari. (nice color)
- _____ 259. 11" Imperial Heavy Grape Chop Plate – Mari. (scarce; nice color and irid.)
- _____ **260. 10-1/2" M'BURG ROSILAND LG. 6 RUFFLED BOWL – AMYTH. (SCARCE; NICE COLOR AND IRID.)**
- _____ 261. Imperial Grape Flared Master Berry Bowl – Pastel Mari. (super irid.)
- _____ 262. Dugan Six Petals 6 Ruffled Bowl – Purp. (nice color and irid.)
- _____ 263. Dugan Six Petals 6 Ruffled Bowl – Dk. P. Opal. (super opal.)
- _____ 264. Fenton Rose Wreath Handled Punch Cup – Green (has vintage interior)
- _____ 265. Fenton Rose Wreath Punch Top – Blue (has vintage interior; satiny finish)
- _____ 266. N G&C 5 Pc. Berry Set – Purp. (scarce; nice color)
- _____ 267. Imperial Grape Water Carafe – Dk. Mari. (scarce; nice color and irid.)
- _____ **268. DUGAN FISHNET 2 PC. CRIMPED EDGE EPERGNE – P. OPAL. (SCARCE AND DESIRABLE; NICE OPAL.)**
- _____ 269. Fenton G&C Ftd. Ruffled Fruit Bowl w/ Per. Med. Int. – Mari.
- _____ **270. EUROPEAN CLASSIC ARTS ROSE BOWL – MARI./ GREEN STAIN (RARE ITEM; NICE COLOR AND GREEN STAIN)**
- _____ 271. N Fruits and Flowers Stemmed Handled Bon Bon – Dk. Mari. (nice color)
- _____ 272. 13" Tall Fenton April Showers Swung Vase – Blue (nice color)
- _____ **273. 11"-12" TALL DUGAN PULLED LOOP SWUNG VASE – BLUE (RARE COLOR IN THIS PATTERN; NICE)**
- _____ 274. 11"-12" Tall Dugan Pulled Loop Swung Vase – P. Opal. (nice opal.)
- _____ **275. 10" N PILLAR RIBBED SWING VASE – AQUA OPAL. (SCARCE AND VERY DESIRABLE)**
- _____ 276. 10" Fenton Rustic Swung Vase w/ Tight Crimped Edge – Blue (nice color)
- _____ 277. 10" Fenton Fine Rib Swung Vase – Depression Green (not iridized)
- _____ 278. 10" N Fine Rib Swung Vase – Green (scarce; nice)
- _____ 279. 10" N Fine Rib Swung Vase – Blue (rare color but has large chip)
- _____ 280. 9-1/2"-10" Fenton Fine Rib Swung Vase – Amyth. (scarce color for this item)
- _____ 281. 9-1/2"-10" Fenton Fine Rib Swung Vase – Blue
- _____ 282. 11"-12" Fenton April Showers Swung Vase – Blue (nice color)
- _____ 283. Surprise
- _____ 284. Surprise
- _____ 285. Surprise



BURNS
 AUCTION SERVICE
 P.O. BOX 608 • BATH, NEW YORK 14810

First Class Mail
 U.S. Postage
 PAID
 Eugene, Oregon
 Permit No. 305

N.E.C.G.A.
Convention Auction
Friday, September 17, 1999
Auction 6:00 P.M.

Preview 4:00 P.M.
 at the
 Quality Inn & Conference Center
 51 Hartford Turnpike (Rt. 83)
 Vernon, Connecticut 06066
 (800) 253-INNS or (860) 646-5700
 Fax (860) 646-0202

