

ESTATE CARNIVAL GLASS AUCTION

Session #1: Friday, September 17, 1999 - 6:00 p.m.

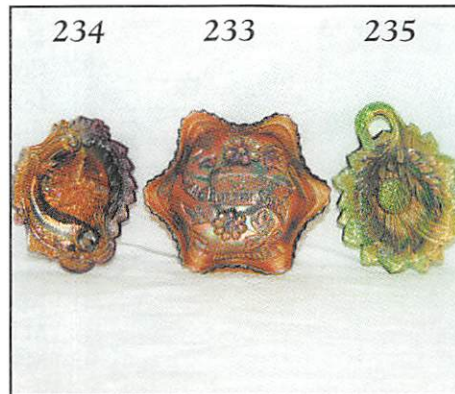
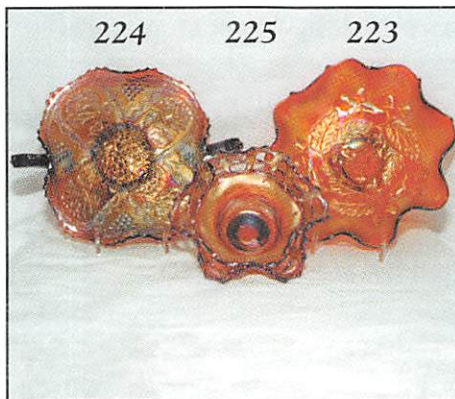
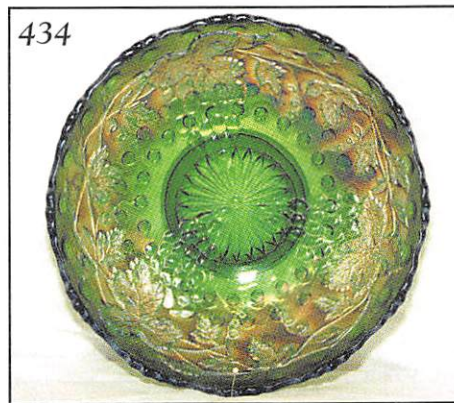
Session #2: Saturday, September 18, 1999 9:00 a.m.

Held Inside the Mickey Reichel Auction Center

Office: 660-882-5292 • Boonville, Missouri • Home: 660-882-5283

Direct e-mail: mreichel@undata.com

NEW WEB SITE ON: <http://www.woodsland.com/carnivalglass>



Robert Lightner Estate: Mary Clapp and Mark Lightner Trustees

NO BUYERS PREMIUM

Held Inside the Mickey Reichel Auction Center

1 Mile North of I-70 on Hwy. 5, Exit 101, Boonville, Missouri • 20 Miles West of Columbia, MO on I-70
Preview Friday 12 p.m. - 6 p.m. and 7:30 a.m. - 9:00 a.m. Day of Auction

Make Reservations **EARLY** at one of these local motels:

Days Inn: 660-882-8624 • Comfort Inn: 660-882-5317 • Super 8: 660-882-2900


Auction Consists of Rarity, Great Irid.. and Variety

WRITE IN BIDS: If you are unable to attend the auction, we will be happy to accept absentee bids which must be received by THURSDAY, SEPTEMBER 16, 1999. Don't Delay.

FOR AUCTION PRICE RESULTS: Send \$3.00 and Large S.A.S.E. to 516 Third Street, Boonville, MO 65233-1536

PLEASE NOTE: There is a **\$5 handling charge for each successful bid which will be added to the selling price** for all write-in bids. This is in addition to the cost of postage, insurance and packing. Your write-in bid will be entered just as if you are present and bidding. **Successful bidders will be notified in 1 to 3 days by the auctioneer (so be sure to include your phone number).** Direct mail bids to Auctioneer Mickey Reichel, 516 Third Street, Boonville, MO 65233-1536. Terms: Cash or Check accepted with proper I.D. and Social Security Number and References. Announcements made day of the auction supercede all printed material. Not Responsible for Accidents or Sold Items.

No return on any items once they leave the Auction Center (No Exceptions).****

 Call for additional information: 660-882-5292 days or 660-882-5283 evenings.

FAX: 660-882-5292 (evening hours start FAX transmission after beep)

MAIL BIDS: Items are bid on in perfect condition with average or above iridescence OR as listed in the brochures. Bids will not be carried out when damage on an item has been found during the auction.

 **PEOPLE PRESENT AT AUCTION ARE RESPONSIBLE FOR FINDING ANY PINHEADS, WEAR, SPOTTINESS, MANUFACTURER'S DEFECTS OR ANY OTHER MINOR FLAWS, ETC.**

 **NOTE: Read each line, as we have accentuated the type of no particular piece, all are special.**

Day 1 - September 17, 1999 - 6:00 p.m.

- | | |
|--|---|
| _____ 1. P - Grape & Cable Punch Base - Silvery | _____ 23. P - Good Luck BW Bowl, Buffed Tips |
| _____ 2. G - 8" Bulls Eye & Leaves Ruffled Bowl | _____ 24. P - Golden Harvest Decanter w/no Stopper |
| _____ 3. Aqua - 6" Scales Plate | _____ 25. M - Imperial Grape Decanter w/no Stopper |
| _____ 4. G - I.C.S. Leaf Chain Bowl - Silvery | _____ 26. P - Peach & Pear Banana Bowl w/base Chip |
| _____ 5. M - Leaf Tier Berry Bowls - 3 x \$ | _____ 27. W - Peach & Pear Banana Bowl w/Epoxy Base |
| _____ 6. 9" Ftd. Orange Tree Master Bowl | _____ 28. Clam - Imperial Lustre Rose Centerpiece Bowl |
| _____ 7. M - maple Leaf Stem Berry Bowl - 6 x \$ | _____ 29. Rare B - Lattice & Grape Tankard (Cracked) |
| _____ 8. P - maple Leaf Stem Berry Set - Master +5 | _____ 30. M - Mary Ann Vase - Rusty Center |
| _____ 9. M - Alfred Steiner Ashtray | _____ 31. B - Blue Berry Pitcher (Cracked) |
| _____ 10. A - 6" N Grape & Cable Plate | _____ 32. Contemporary P - Rd 7 1/2" Cherries & Jewel Heart Bowl |
| _____ 11. M - 9 1/2" Ruffled Coin Spot Bowl | _____ 33. Contemp. Black - 9 1/4" Ftd. Stag & Holly Bowl |
| _____ 12. G - 9 1/4" Ruffled Coin Spot Bowl | _____ 34. Contemp. Red - 14 1/4" Octagon Variant Platter |
| _____ 13. Teal - Westmoreland Sm. Shells Dish | _____ 35. Aqua - Jeanette Butterfly Pin Tray |
| _____ 14. M - N Stemmed Daisy & Plume Rose Bowl | _____ 36. G - N Fine & Roses Rose Bowl |
| _____ 15. G - Blackberry Spray Compote | _____ 37. M - Thorn & Thistle Ftd. Nut Bowl |
| _____ 16. M - 9" Ruffled Headdress Bowl | _____ 38. M - Wreath Roses Rose Bowl |
| _____ 17. M - Garland Rose Bowl | _____ 39. M - leaf Rays Nappy |
| _____ 18. M - Poodle Powder Dish | _____ 40. M - Ftd. Daisy & Plume Rose Bowl - Rib Int. |
| _____ 19. M - Bambi Powder Dish | _____ 41. Amber - Imp. Pansy Sugar Bowl |
| _____ 20. M - Scotty Powder Dish | _____ 42. M - Imp. Pansy Creamer |
| _____ 21. M - Swan Powder Dish | _____ 43. M - 8" Rd. Fenton Waterlily & Cattail Bowl |
| _____ 22. M - 1/2 pt. Jackman Whiskey Bottle | _____ 44. A - Sm. Westmoreland Shells Dish |
| | _____ 45. M - Lg. Fentonia Ftd. Master Bowl |
| | _____ 46. M - Czechoslovakian Decanter w/Stopper |

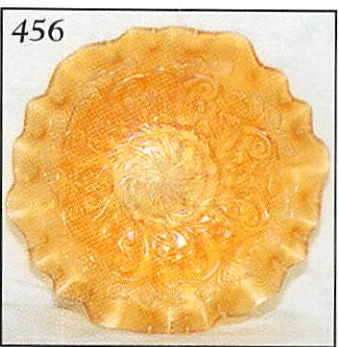
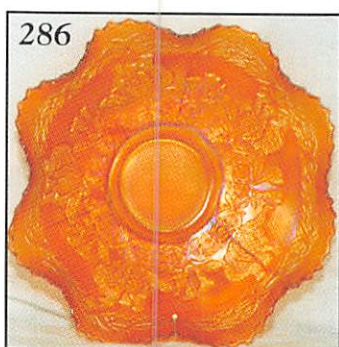
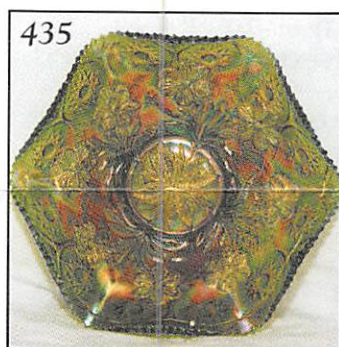
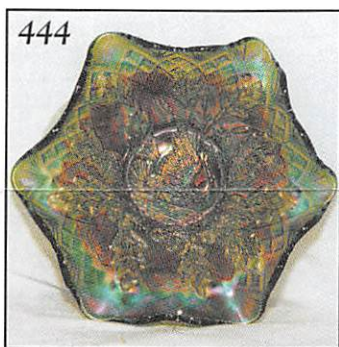
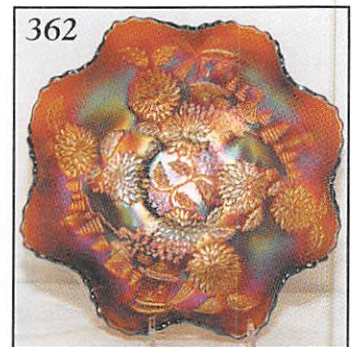
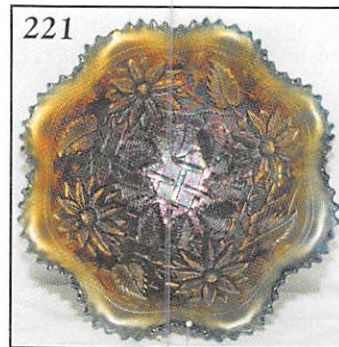
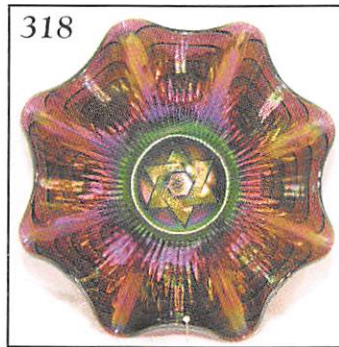
47. P - Maple Leaf Master Stemmed Berry Bowl
 48. **M - 5 1/4" O.E. Ruffled Basket**
 49. M - ABC Stork Plate
 50. **M - Imp. Shell Bowl**
 51. A - 9" N Stippled Rays Ruffled Bowl
 52. **M - Wind Flower Tri-Corner Nappy**
 53. M - Blackberry & Butterfly Ftd. Creamer
 54. **M - Coin Dot 5 1/2" Dia. Ped. Rose Bowl**
 55. M - 6" Ruffled Rococo Bowl
 56. **M - 9 1/4" Low Ruffle 3 in 1 Fenton Holly Plate?**
 57. M - Beaded Shell Creamer & Spooner (one price)
 58. **M - File Creamer & Spooner (one price)**
 59. M - Rd. Butterfly & Blackberry 7 pc. Berry Set
 60. **Violet - N Grape & Cable Punch Cups - 2 x \$**
 61. G - Imp. Helios Grape Punch Cup
 62. **M - Mlbg. Hobstar & Feather Punch Cup**
 63. B - Orange Tree Punch Cup
 64. **P - S - Repeat Punch Cup**
 65. P - N Acorn & Burr Berry Bowl - Silvery
 66. **M - Contemporary - 8" Apollo 13 Plate**
 67. R - Contemporary - Octagon Variant Water Pitcher
 68. **Red Amberina - Contemporary - Octagon Vt. Butter Dish**
 69. Light Amberina - Contemporary - Octagon Vt. Butter Dish
 70. **B - 5" - In God We Trust - DT - Plate**
 71. P - Contemporary - Fenton 1970 Christmas Church Plate
 72. **P - Contemporary - Fenton Madonna 1971 Plate**
 73. M - Contemporary - IG Chrysanthemum Plate
 74. **R - Contemporary - IG 1969 US Capital Chop Plate**
 75. B - Contemporary - IG 9 1/2" Windmill Plate
 76. **Amerina - Contemporary - 9 1/4" ICGA 1974 Ohio Plate**
 77. A.O. - Contemporary - Fenton 1981 Grape & Cable Lg. Bowl, Signed LeVay Exp.
 78. **P - Contemporary - Fenton Orange Tree Rose Bowl**
 79. M - Contemporary - IG Grape Ind. Shaker
 80. **BA - Contemporary - 1969 st. Louis ICGA Decanter**
 81. Custard M - Contemporary - Orange Tree 1983 HOACGA Loving Cup
 82. **P - Contemporary - Fenton Bell**
 83. B - 1975 ACGA Bell Tower Bell w/no dinger
 84. **G. Opal - 1986 HOACGA Bell**
 85. B - 1987 HOACGA Bell
 86. **M - 1988 HOACGA Bell**
 87. Teal - 1989 HOACGA Bell
 88. **B - Saltz & Pfeffer S & P Set - IG**
 89. Aqua - Contemporary - 5" Kings Crown Compote
 90. **B - Contemporary - Imp. Swan Salt**
 91. P - Mosser Cherry & Lattice Cr. & Sgr. & Butter Dish Set
 92. **P - Child's 7 pc. Punch Set**
 93. P - Contemporary - 1979 Westward Ho - Gateway Club Goblet
 94. **B - Contemporary - Westmoreland Swans Cream & Sugar**
 95. Aqua Opal - Butterfly & Blackberry Basket - LeVay 13 of 95/1980
 96. **B - Contemporary - Dolphin Single Candlestick**

97. Amberina - Contemporary - Swung Pattern Vase?
 98. **R - HOACGA, 1974, 7 pc. Good Luck Water Set**
 99. B - Fen & Feather Tumbler - Contemporary
 100. **IB - Fan & Feather Tumbler - Contemporary**
 101. P - Heavy Iris Tumbler - Contemporary
 102. **Amber - 1971 ACGA Beaded Shell Mug**
 103. Vaseline - 1981 ACGA Beaded Shell Mug
 104. **W - Westmoreland Copper Base Trinket Box**
 105. Amberina - Stork & Rushes Toothpick Holder - Contemporary
 106. **M - Lg. Stork & Rushes Bowl w/W - Contemporary**
 107. P - 9" Jefferson Davis Smith Glass Plate
 108. **B - Swans Toothpick Holder - Contemporary**
 109. B - Degenhart Ftd. Toothpick Holder
 110. **M - Wreath Cherry Toothpick - Contemporary**
 111. P - Fenton Daisy & Button Boot
 112. **M - Cape Cod Cruet - LeVay 1971**
 113. W - Dahlia 5 pc. Water Set - Contemporary
 114. **IB - 8 1/4" Cupids Plate - Contemporary**
 115. M - 8" Schooner Plate - Contemporary
 116. **Saph. - Wheaton Lady - Southern Bell - Figure**
 117. Wheaton Mini 12 pc. Bottle Collection
 118. **P - Smith Glass - 9 1/2" Eagle Ashtray**
 119. M - Liberty Bell Limited Ed. Jar - MIB
 120. **Imperial Glass 12 Days Christmas Plates - Choice X \$ each**

100 Lots Consisting of Indiana Harvest Plus Some Damaged Items - Not Numbered - Also Sells Friday Night

Day 2 - September 18, 1999 - 9:00 a.m.

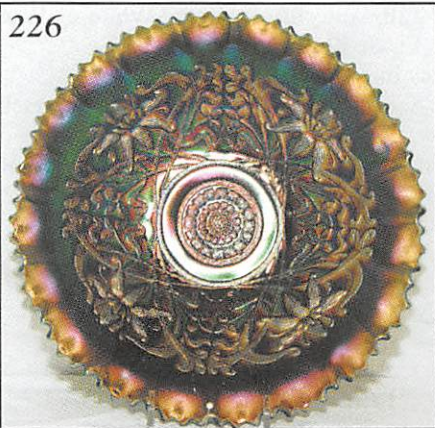
121. B - Blue Berry Tumbler - Pretty Silver
 122. **M - Stork in Rushes Tumbler**
 123. B - Lattice & Grape Tumbler A & B
 124. **M - Ftd. Orange Tree Tumbler - Light Irid.**
 125. M - Vineyards Tumbler - Dark
 126. **M - Field Flowers Tumbler - Dark Radium**
 127. P - Field Flowers Tumbler - Radium Silver
 128. **B - Milady Tumbler - Gold & Silver**
 129. M - N Interior Poinsettia (Rare) Tumbler
 130. **B - N Peach Tumbler**
 131. B - Strawberry Scroll Tumbler - Pretty Silver
 132. **Smoke - Soda Gold Tumbler - Scarce**
 133. M - Inverted Coin Dot - Scarce & Nice
 134. **G - Fluffy Peacock - Radium Gold & Silver**
 135. M - Imp. Windmill Tumbler
 136. **P - Dugan Peacock at Fountain Tumbler**
 137. G - Butterfly & Fern Tumbler - Very Nice
 138. **P - N Acorn Burrs Tumbler - Multi Elec.**
 139. B - Good & Home Tumbler - Rarity
 140. **B - Blackberry Block Tumbler - Scarce & Pretty**
 141. G - N Greek Key Tumbler - Very Scarce
 142. **B - Butterfly & Blackberry Tumbler**
 143. B - Apple Tree Tumbler - Radium Silver
 144. **M - Lustre Rose Tumbler - A or B**
 145. G - Tiger Lily Tumbler - A or B
 146. **B - Paneled Dandelion - A, B or C**
 147. M - Bouquet Tumbler - A, B or C
 148. **M - Beaded Stork-in-Rushes Tumbler - 6 x \$**



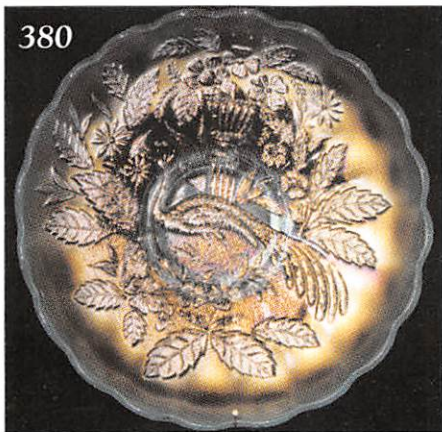
- _____ 149. B - Floral & Grape Tumbler - Fenton - A, B, C or D
- _____ **150. M - Grapevine & Lattice Tumbler - 6 x \$**
- _____ 151. MM - Flute Goblets - 6 x \$
- _____ **152. M - Octagon Goblet**
- _____ 153. M - 1/10 Pint Golden Wedding Whiskey Bottle w/Label & Lid
- _____ **154. P - Ftd. Grape Delight Rose Bowl**
- _____ 155. P - Grape Delight Nut Bowl
- _____ **156. P - Grape Delight Nut Bowl**
- _____ 157. W - Hammered Bell Shade - Very Scarce
- _____ **158. M - Birds & Cherries Bon Bon**
- _____ 159. M - 10 3/4" ICS Ftd. Stay & Holly Bowl - Nice Example
- _____ **160. M - 9 1/4" Ruffled Garden Path Variant Bowl**
- _____ 161. Goofus, M, ? - Imp. Grape 9" Ruffled Bowl
- _____ **162. A - Fenton Butterfly Bon Bon**
- _____ 163. M - Windmill Milk Pitcher - Radium
- _____ **164. M - Super Radium Star Medallion Milk Pitcher**
- _____ 165. M - Great Radium Poinsettia Milk Pitcher
- _____ **166. PM - Poinsettia Milk Pitcher**
- _____ 167. M - Raspberry Milk Pitcher
- _____ **168. G - Helios, 474 Milk Pitcher**
- _____ 169. M - 474 Milk Pitcher
- _____ **170. M - Octagon Milk Pitcher**
- _____ 171. M - Square Butterfly & Tulip Ftd. Bowl
- _____ **172. M - Golden Harvest Decanter**
- _____ 173. M - Golden Harvest Wine - 3 x \$
- _____ **174. G - Imp. Grape Decanter w/6 wines - Helios**
- _____ 175. M - Ivy Souvenir of Ohio Wine w/Clear Base
- _____ **176. M - 7" BE WISE Owl Bank**
- _____ 177. M - 7" Ruffled Lattice & Points Bowl
- _____ **178. P.O. - 6" 8 Ruffle Petal & Fan Bowl**
- _____ 179. Clear - 1911 Shriner Champagne
- _____ **180. Clear - 1910 New Orleans Champagne**
- _____ 181. Clear - 1909 Louisville Tobacco Champagne - A or B
- _____ **182. Celeste B - 3/4 lb. Candy Jar w/Lid**
- _____ 183. M - Dugan Ftd. Cherries Bowl - Inside & Out
- _____ **184. W - Dahlia Creamer w/Red Flower - Very Scarce**
- _____ 185. HA - Cosmos & Cane Creamer (Rarity)
- _____ **186. P - 7 1/2" Tri-corner Plain/Beads & Flowers Plate**
- _____ 187. M - Dugan Hld. Big Basketweave Basket
- _____ **188. M - 6" Pine Cone Plate**
- _____ 189. M - 7 1/4" Ruffle Peacock & Dahlia Bowl
- _____ **190. M - 8 3/4" Autumn Acorns 3 in 1 Bowl**
- _____ 191. M - Birds w/Grapes Wall Pocket
- _____ **192. M - 7 1/2" Grapevine Lattice Ruffle Plate**
- _____ 193. Yellow Amber - N Thin Rib 8 3/4" Vase - Rare Color
- _____ **194. B - 9" CRE Rustic Vase**
- _____ 195. A - 10 3/4" Long Thumb Print Vase
- _____ **196. B - 15 1/2" Fenton Thin Rib Vase**
- _____ 197. P - 10" Lined Lattice Vase
- _____ **198. M - 9 3/4" JIP Morning Glory Vase**
- _____ 199. PO - 8 3/4" Wide Rib Vase
- _____ **200. P - N 7" Dia. Points Vase - 5" Top - 3 3/8" Base**
- _____ 201. A - 11 1/4" Dia. & Rib Vase
- _____ **202. M - Top - 16 1/2" Gothic Arches Vase - 4" Clear Base - 6" Top - Scarce**
- _____ 203. M - Ripple 10 1/4" Mid-size Vase - 6 1/2" Top - 4" Base
- _____ **204. M - 11" April Showers Vase**
- _____ 205. B - 7" Dia. & Bow Vase
- _____ **206. Russet - 11" Four Pillars Vase w/Rib Interior**
- _____ 207. A - 7" Dia. Point Column Vase - 3 1/2" Base - 4 1/4" Top
- _____ **208. A - 10 1/2" Dia. Point Column Vase**
- _____ 209. M - 9 1/2" Rustic Vase
- _____ **210. M - Jenkins Golden Flowers Vase - Very Pretty Example**
- _____ 211. M - Jenkins Stork Vase - Silvery
- _____ **212. M - 10" Dark Fenton Fine Rib Vase**
- _____ 213. M - 11 1/2" Fenton Flute Vase - Dark
- _____ **214. Clam - 7 1/2" Smooth Panel Vase - 6 1/2" Top - 3 1/2" Base**
- _____ 215. Flash M - 7" European Concave Dia.?? Vase w/Whirling Flowers Base - 5" Top - 4" Base
- _____ **216. M - Star & File Celery Vase**
- _____ 217. M - 6" Heavy Prisms Vase - Beautiful Example
- _____ **218. PO - 4 1/2" Dugan Thin Panel Vase**
- _____ 219. M - Adams Rib Fan Vase - 6 1/2" Tall
- _____ **220. B - Ruffled Lg. Mikado Compote - Rare Beauty**
- _____ 221. B - Poinsettia & Lattice Ruffle Ftd. Bowl - Very Desirable - Northwood Blue
- _____ **222. B - 11" - 8 Ruffle Ftd. Chrysanthemum & Windmill Bowl - Great One**
- _____ 223. Red - 7 3/4" Ruffled Acorns Bowl - A Dandy
- _____ **224. RARE Red - Lotus & Grape Vt. Bon Bon - Very Rare - Open Bubble in Handle**
- _____ 225. Red - Two Row OP. Edge Ruffled Basket - Very Nice
- _____ **226. Scarce G - 9 1/2" N PCE, BW, Wishbone Bowl**
- _____ 227. G - 9 1/2" Ruffled BW, N, Wishbone Bowl - Also Scarce
- _____ **228. A - 10" 6-Ruffle Ten Mums Bowl - Great Example**
- _____ 229. M - Fleur de Lis, Josef Inwald - 12 1/2" Chop Plate - Radiant Irid.
- _____ **230. AO - Spat. Ftd. Three Fruits Medallion Stippled Bowl - Hot Item**
- _____ 231. AO - Rose Show Bowl - Lots of Pinks - Very Popular
- _____ **232. P - 6 1/2" Ski Star & Compass Bowl**
- _____ 233. A - Isaac Benesch & Son Adv. Ruffled Bowl - Great Example
- _____ **234. Beautiful A - Sea Coast Pin Tray - Hidden Rim Flash - Rare Item**
- _____ 235. G - Scarce Sunflower Pin Tray - Base Flaw
- _____ **236. B - Orange Tree Breakfast Set**
- _____ 237. A - N Lustre Flute Breakfast Set
- _____ **238. A - N Grape & Cable Breakfast Set**
- _____ 239. P - 6 1/4" Wishbone & Spades Plate - BW Back
- _____ **240. A - Beaded Shell Mug - Silvery**
- _____ 241. M - Fishermans Mug - Rare w/Cracked Handle
- _____ **242. P - Fishermans Mug**
- _____ 243. A - Lattice Band - Stork & Rushes Mug
- _____ **244. M - Lattice Band - Stork & Rushes Mug**
- _____ 245. A - N Singing Birds Mug
- _____ **246. B - 2 1/2" Base - Orange Tree Mug**
- _____ 247. M - 2 1/2" Base - Orange Tree Mug
- _____ **248. M - Colonial Imp. Mug - Clear Base**
- _____ 249. Scarce M - Little Bo Peep Mug
- _____ **250. A - Pineapple 6 3/4" Ruffle Bowl -(Sowerby)**
- _____ 251. P - 7" Ruffled CRE Bells & Beads Bowl
- _____ **252. P - N Rosette Ftd. Bowl**
- _____ 253. A - N Fine Cut & Roses Candy Dish
- _____ **254. P - Imp. Grape Decanter w/stopper - Gorgeous Example**

- _____ 255. Rare M - Dugan Ruffled Five Hearts Bowl
- _____ **256. Popular M - 5½" Ruffled Panthers Bowl**
- _____ 257. PM - Ftd. Ruffled 6" Little Fishes Bowl - Scarce
- _____ **258. M - Ruffled Lions Bowl - Detailed Example**
- _____ 259. M - 6-Ruffle Pony Bowl - Old Favorite
- _____ **260. A - 9" N Grape & Cable Plate - BW Back**
- _____ 261. P - N Butterfly Bon Bon
- _____ **262. M - N Butterfly Bon Bon**
- _____ 263. M - 7 pc. Wine & Roses RARE Cider Set - Complete
- _____ **264. G - Helios 7 pc. Imp. Tiger Lily Water Set**
- _____ 265. M - 7 pc. Orange Tree & Scroll Tankard Set
- _____ **266. M - N Dandelion 7 pc. Tankard Set**
- _____ 267. Deep B - Paneled Dandelion Tankard Only - Scarce
- _____ **268. B - Paneled Dandelion Tumbler**
- _____ 269. Complete G - Paneled Dandelion 7 pc Tankard Water Set
- _____ **270. M - Fenton 7 pc. Apple Tree Water Set**
- _____ 271. M, Enameled - Banded Iris 7 pc. Tankard Set
- _____ **272. P - N Acorn Burrs 7 pc. Water Set - Pitcher Lg. Base Bruise**
- _____ 273. B - Fenton Floral & Grape Bulbous Pitcher
- _____ **274. B - Fenton Floral & Grape Tumbler**
- _____ 275. Rare B - Lattice & Grape Tankard Pitcher - Heat Flash Top of Handle - Beautiful Item
- _____ **276. M - N Cherry & Cable 4-place Table Setting - Very Rare**
- _____ 277. Light Pale Blue - Orange Tree Loving Cup - Has a Clam Broth Coloring to it - Only Second Seen
- _____ **278. G - Imp. Acanthus 7¼" Rd. Bowl**
- _____ 279. G - 10" Ruffled Feathered Serpent Bowl
- _____ **280. G - N 7½" Wild Rose Ftd. Flared Bowl**
- _____ 281. M - 9½" Ftd. Ruffled Little Fishes Bowl - Pretty Pastels
- _____ **282. Beautiful M - Woodpecker Wall Vase**
- _____ 283. M - 9¼" Ftd. ICS Water Lily Bowl - Dark Beauty
- _____ **284. M - Lg. Ftd. Grape & Cable Persian Med. Interior Fruit Bowl**
- _____ 285. M - Ruffled Orange Tree, 8¾" Bowl - Lot of Pinks
- _____ **286. M - 8-Ruffle, Sq. Shape, Coral Bowl - Outstanding Example**
- _____ 287. A - 7¼" Ruffle Peacock Tail Bowl
- _____ **288. Scarce Radium M - 10-Ruffle Brooklyn Bridge Bowl**
- _____ 289. M - ICS, Collar Base, Dragon & Lotus Bowl
- _____ **290. M - ICS, Spat. Ftd., Peacock & Grape Bowl**
- _____ 291. M - 9¼" Park Satin Cosmos Vt. Bowl
- _____ **292. Powder B - 7½" Ruffle Fenton Acorn Bowl - Very Pretty - Unusual Base Color**
- _____ 293. M - 8¾" Cherry Circles, 4-Sided, Lg. Bon Bon
- _____ **294. Powder B - 7½" Rd., Handled Cherry Circles Bowl - Rare Base Color**
- _____ 295. Beautiful Clam - Imp. Pansy Oval Pickle Dish
- _____ **296. Clam - 9¼" ICS Blaze Bowl - Imperial - Super Pastel Irid.**
- _____ 297. M - Fenton 8-Ruffle Sq. Shape Peacock & Urn Bowl
- _____ **298. A - N Star of David & Bows Bowl - Great Ext.**
- _____ 299. Rich M - Ruffled Nippon Bowl - Scarce BW Back Pattern
- _____ **300. M - 3 in 1 Edge, Lotus & Grape Bowl - Beautiful Scarce Shape**
- _____ 301. P - 8" Corinth Banana Shape 2-Sides Up Bowl
- _____ **302. Root Beer - Collar Base - 8¾" Ruffled N Grape Leaves Bowl - Very Unusual Color**
- _____ 303. G - Collar Base - 8¾" Ruffled N Grape Leaves Bowl - Alaskan Irid
- _____ **304. A - 8½", 6-Ruffle Captive Rose Bowl**
- _____ 305. A - N Beaded Cable Rose Bowl - Pretty One
- _____ **306. G - Ruffled Fenton Holly 9" Bowl**
- _____ 307. A - Ruffled Imp. Pansy Bowl - Multi Elec.
- _____ **308. PO - Dugan CREW Tri-Corner Dogwood Bowl - Lots of Opal**
- _____ 309. M - 8" Rd. Double Stem Roses Bowl
- _____ **310. PO - 8" Rd. Double Stem Roses Bowl - Lots of Opal**
- _____ 311. A - 8¼", 10-Ruffle, Double Stem Roses Bowl
- _____ **312. PO - 9", 3 in 1 Crimp Dugan Apple Blossom Twigs Bowl**
- _____ 313. PO - 8¾" CRE, Smooth Ray Bowl - Caroline Ext.
- _____ **314. Great PO - 10-Ruffle Raindrops Bowl w/Keyhole Ext.**
- _____ 315. PO - 10¾" Lg. 6-Ruffle Ski Star & Compass Bowl
- _____ **316. PO - 8" Rd. Round-Up Bowl - Pale M Overlay**
- _____ 317. M - 9" Zipper Loop Kero. Lamp - Dark Rich Irid
- _____ **318. P - Imp. Star of David Ruffle Bowl - Radium Elec.**
- _____ 319. P - N Grape & Cable Sweetmeat Compote - Int. Rim Chip
- _____ **320. A - 8", 10-Ruffle Windflower Bowl - Beautiful Example**
- _____ 321. P - Imp. 13¼" Morning Glory Vase - 5" Starred Base - 9" Top - WOW!
- _____ **322. P - Imp. 13" Morning Glory Vase - 5" Starred Base - 10¼" Top - WOW!**
- _____ 323. P - 12¾" Mid Size Tree Trunk Vase - 4½" Base - Multi Elec.
- _____ **324. G - 7½" N Tree Trunk Vt. Vase - 3½" Starred Base - 4½" Top**
- _____ 325. M - 9½" Imp. Beaded Bulls Eye - Radium Vase - 6" Top
- _____ **326. A - 8" CRE Ribbon Tie Bowl - Scarce Shape**
- _____ 327. A - N 8¼" Strawberry Rd. Deep Bowl - Pl. Back - Rare Shape
- _____ **328. P - 7¼" N Ruffle Fruits & Flowers Bowl - Multi Elec.**
- _____ 329. P - N Leaf Beads Rose Bowl - Multi Elec.
- _____ **330. Red Amy - Dugan Cherries Banana Bowl**
- _____ 331. A - Dugan Cherries 6½" Little Banana Bowl
- _____ **332. P - N Rd. Bushel Basket - Silver & Gold Irid.**
- _____ 333. P - N Acorn Burrs 4-Place Setting - Heat Separation in Spooner
- _____ **334. Fantastic P - 8" Imp. Grape Plate**
- _____ 335. BA ?? - Dugan Many Fruits Punch Bowl Top
- _____ **336. A - N Spat Ftd. Sunflower Bowl**
- _____ 337. A - 8¼" Deep Rd. Flared Dugan Malaga Bowl - Very, Very Scarce
- _____ **338. BA - 10", 8-Ruffle Australian Magpie Bowl - Multi Elec.**
- _____ 339. BA - 9½", 12-Ruffle Australian Kingfisher w/Waddle Blossom Int., Elec.
- _____ **340. B - 8½" Rd. Flora (Sowerby) Float Bowl - Rare**

226



380



222



230



386



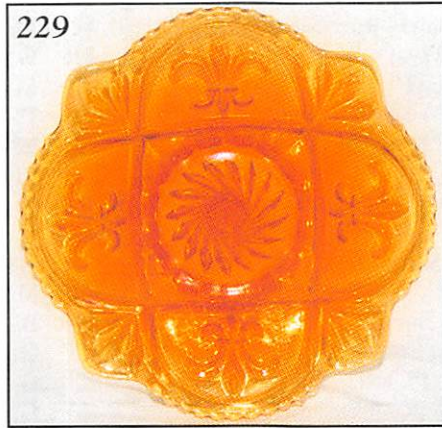
231



387



229



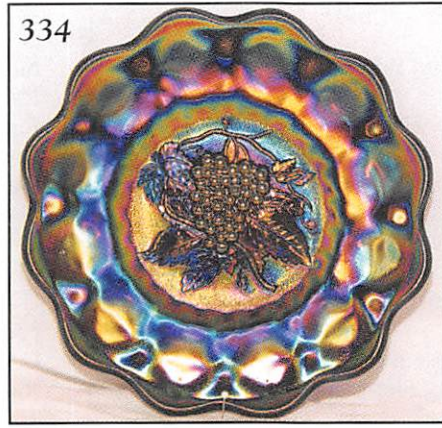
399



338



334



339



- _____ 341. Super Radium M - Greek Key Water Pitcher - Real Beauty
- _____ 342. **M - Orange Tree Ftd. 7 pc. Water Set - Exceptionally Rare Color**
- _____ 343. M - Wishbone 5 pc. Water Set - Another Rarity
- _____ 344. **P - Field Flower Imp. Outstanding Elec. Water Pitcher**
- _____ 345. M - Dugan Heavy Iris Tankard Water Pitcher - Above Average
- _____ 346. **M - Wreathed Cherry 7 pc. Water Set - Great Find**
- _____ 347. M - Fenton Waterlily & Cattails, Dark, 5 pc Water Set
- _____ 348. **M - Interior Swirl Tankard Water Pitcher - Clear Base - 12½" Tall**
- _____ 349. M - Mlbg. Diamonds Water Pitcher - Rich Satin
- _____ 350. **M - Mlbg. Diamonds Tumbler - A or B**
- _____ 351. B - Enameled Cherries & Little Flowers 7 pc. Bulbous Water Set - Popular Set
- _____ 352. **M - N Dandelion 7 pc. Tankard Water Set**
- _____ 353. P - N Dandelion 6 pc. Tankard Water Set
- _____ 354. **M - Lattice & Grape 7 pc. Tankard Water Set**
- _____ 355. B - Butterfly & Fern 6 pc. Water Set
- _____ 356. **G - N Wide Panel Epergne - 4 Lily - Super Example**
- _____ 357. G - N 12", Rd., Grape & Cable Punch Bowl & Base w/5 cups - Very Scarce Set
- _____ 358. **A - 11½", Rd., Grape & Cable Punch Bowl & Base w/6 cups - Scarce Shape**
- _____ 359. P - N Acorn Burrs Punch Bowl & Base w/8 cups - Very, Very Desirable
- _____ 360. **P - 5" Zippered Heart Imp. Berry Bowl**
- _____ 361. M - 6" Cherry Chain Plate - Orange Tree Ext.
- _____ 362. **A - 9" Collar Base - Sq. 8-Ruffle, Chrysanthemum & Windmill Bowl - Rare Shape**
- _____ 363. M - 5" Round Itaglio Cherry Bowl - 4 x \$
- _____ 364. **A - 7" Ruffled Single Flower Bowl**
- _____ 365. G - Fenton Vintage Fernery Bowl - Scarce Beauty
- _____ 366. **M - Circle Scroll Whimsey Hat from Tumbler - Scarce**
- _____ 367. G - 6½", Rd., Inverted Strawberry Bowl, Sgn. Near Cut
- _____ 368. **M - Imp. Grape 9¼" Beautiful Satin Plate**
- _____ 369. A - Fenton Iris Buttermilk Goblet
- _____ 370. **M - 2 pc. Twins Fruit or Punch Bowl**
- _____ 371. M - 2 pc. Rare 9" Round Top Fruit Bowl
- _____ 372. **A - 8½" Coin Dot Fenton Plate - Pl. Ext. - Flared**
- _____ 373. Pink - Stretch, 3¼" Candlesticks - Pr.
- _____ 374. **Pink - Brocaded Acorns Bon Bon - Fostoria**
- _____ 375. Pink - Brocaded Palms Ice Bucket - Fostoria
- _____ 376. **Aqua - 5½" Ruffle OE Basket**
- _____ 377. Clam - 10", 6-Ruffle, Cherry Chain Bowl - Scarce Color
- _____ 378. **Clam - 9½" Fenton Holly Plate - Few Offered**
- _____ 379. G - N 3-Fruits, BW, 9" Plate
- _____ 380. **Ice B - N 10" ICS Peacock & Urn Bowl**
- _____ 381. A - 9½" Fenton 12-Sided, 3-Fruits Plate
- _____ 382. **B - Dugan 9" Apple Blossom Twigs Plate**
- _____ 383. Ice G - N 9¼" Peacock Plate
- _____ 384. **M - N Cherry & Cable Butter dish - Top Only**
- _____ 385. M - N Flute Sugar w/Lid
- _____ 386. **M - Giant Ftd. Stag & Holly Rose Bowl - Rare**
- _____ 387. Aqua Opal - Peacocks Bowl - Very Pretty
- _____ 388. **M - 3½" Tall, Waterlily & Cattail Whimsey Vase**
- _____ 389. M - Imp. Lustre Rose Water Pitcher
- _____ 390. **G - Helios Imp. Tiger Lily Water Pitcher**
- _____ 391. M - Dark Scale Band Water Pitcher - Handle Crack at Top
- _____ 392. **M - Lattice & Daisy Tankard - Handle Heat Crack at Top**
- _____ 393. M - Field Thistle 5 pc Water Set
- _____ 394. **M - Maple Leaf 6 pc. Water Set**
- _____ 395. G - 9½" Scroll Embossed Imp. Helios Plate
- _____ 396. **Ice B. - N 7" Tri-Corner Drapery Candy Bowl**
- _____ 397. W - 9¼" Leaf Chain Plate
- _____ 398. **W - Fine Cut & Roses Ftd. Candy Dish**
- _____ 399. W - 9" 3 in 1 Crimp Double Stem Roses Bowl
- _____ 400. **G - N Grape & Cable Hat Pin Holder**
- _____ 401. B - Orange Tree Hat Pin Holder
- _____ 402. **Smoke - 9" Beautiful Imp. Dia. Ring Bowl**
- _____ 403. BA - Six Plums Hat Pin - Silver Radium
- _____ 404. **BA - Triad Hat Pin**
- _____ 405. BA - Big Butterfly Hat Pin - Scarab
- _____ 406. **Group of 4 Small Ball Top Hat Pins - No Irid - One Price**
- _____ 407. W - Puzzle Banana Shape Stem Bon Bon
- _____ 408. **M - 5½" Rd. Puzzle Stemmed Bon Bon**
- _____ 409. P - 5½" Rd. Puzzle Stemmed Bon Bon
- _____ 410. **PM - Hearts & Flowers Compote**
- _____ 411. W - Hearts & Flowers Compote
- _____ 412. **G - N Pl. Int. Daisy & Plume Compote**
- _____ 413. Olive G - Ruffled Iris Compote
- _____ 414. **G - Stemmed Wreathed Rose Bon Bon**
- _____ 415. M - Ruffle Fenton Holly Compote
- _____ 416. **P - Question Mark Stemmed Bon Bon**
- _____ 417. M - Question Mark Stemmed Bon Bon
- _____ 418. **G - Bird & Cherries compote - Silver & Gold Irid.**
- _____ 419. M - 7" Ruffled Imp. Star & File Radium Compote
- _____ 420. **P - N Fern Ruffle Compote - Nice Example**
- _____ 421. M - 6½" 3 in 1 Ruffled Stream of Hearts Compote - Rare Shape
- _____ 422. **M - Dark Ruffle Fenton Peacock & Urn Compote**
- _____ 423. G - N Raspberry Ftd. Bowl - Daisy & Plume Ext.
- _____ 424. **G - 9", 6-Ruffle, Beautiful Heart & Vine Bowl**
- _____ 425. M - Scroll Embossed Compote, Hobstar & File Ext.
- _____ 426. **B - Miniature Blackberry Compote**
- _____ 427. G - 9" Ruffle Fenton Vintage Bowl
- _____ 428. **G - N Dome Base 3-Fruits Medallion Bowl - Great One**
- _____ 429. A - 7¼" Ruffled Mlbg. Little Stars Bowl - Satin Beauty
- _____ 430. **A - Mlbg. 10½", 6-Ruffle Rosaline Bowl - Multi Satin**
- _____ 431. PM - Mlbg. 9½", Zig Zag, 3 in 1 Ruffle Bowl - Radium Blues
- _____ 432. **A - Mlbg. 10", 6-Ruffle Whirling Leaves Bowl - Satin**
- _____ 433. G - Mlbg. 8", ICS Mayan Bowl - Radium Gold
- _____ 434. **G - Mlbg. 9½", ICS Vintage Bowl - Hobnail Ext. - Ultra Rare Size and Base Color**
- _____ 435. G - Mlbg. 10", 6-Ruffle Primrose Bowl - Tooth Nicked
- _____ 436. **G - Mlbg. 8½", ICS Blackberry Wreath Bowl - Radium**

- _____ 437. M - Mlbg. 9", 3 in 1 Blackberry Wreath Bowl - Satin
- _____ 438. G - Mlbg. 9", Ruffled Rays & Ribbon Bowl - Radium
- _____ 439. M - Mlbg. 9½", 3 in 1 Ruffle Many Stars Bowl - 6 Point Star
- _____ 440. A - Mlbg. 9¾", 6-Ruffle Many Stars Bowl - 6 Point Star
- _____ 441. G - Mlbg. Hanging Cherries Spooner
- _____ 442. M - Mlbg. 10½", 6-Ruffle Hanging Cherries Bowl - Very Pretty
- _____ 443. G - Mlbg. 9½", ICS Hanging Cherries Bowl - Scarce Shape
- _____ 444. G - 10", 6-Ruffle Beautiful Nesting Swan Bowl - Mlbg.
- _____ 445. M - 10", 6-Ruffle Beautiful nesting Swan Bowl - Mlbg.
- _____ 446. A - Mlbg. 6-Ruffle Trout & Fly Bowl - Satin
- _____ 447. A - Mlbg. 6-Ruffle Trout & Fly Bowl - Radium
- _____ 448. M - 3 in 1 Ruffle Big Fish Bowl
- _____ 449. M - Mlbg. 9¾" Peacock at Urn Bowl - Flared Top
- _____ 450. A - Mlbg. 8½" Ruffled Mystery Peacock Bowl
- _____ 451. A - Mlbg. Peacock at Urn 5½" ICS Bowl - Small Mold
- _____ 452. A - Mlbg. Peacock at Urn 5¾" ICS Bowl - Small Mold
- _____ 453. M - Mlbg. 5½" 3 in 1 Vintage Sauce Bowl
- _____ 454. A - Mlbg. 5½" ICS Blackberry Wreath Bowl - Beautiful Radium
- _____ 455. A - Mlbg. 9¾" ICS Peacock & Urn Bowl
- _____ 456. M - Mlbg. 8" 3 in 1 Seaweed Bowl - Rarity
- _____ 457. A - Mlbg. 9¾" CRE, Tri-Corner, Dome base, Fleur di Lis Bowl
- _____ 458. A - Mlbg. 8½" 3 in 1 Strawberry Bowl - 6-Ruffle - Radium
- _____ 459. G - Mlbg. 8¾" 3 in 1 Ruffled Grape Wreath Multi-Star Vt. Bowl - Radium
- _____ 460. M - Mlbg. 8½" Ruffled Grape Wreath Multi-Star Vt. Bowl - Radium
- _____ 461. A - Mlbg. 9½" Ruffled Holly Sprig Bowl
- _____ 462. B - 8" Round Persian Medallion Bowl
- _____ 463. B - 7¾" Rd. Dragon & Lotus Bowl
- _____ 464. B - 9", 8-ruffle Cobalt Peacock & Grape Collar Base Bowl
- _____ 465. B - 8½" 3 in 1 Fenton Thistle Bowl
- _____ 466. B - 9", 8-Ruffle Plaid Bowl
- _____ 467. B - N PCE Peacocks Bowl - Rib Ext.
- _____ 468. B - Fenton Illusion Bon Bon - 4 Sides Up
- _____ 469. P - Louisa Rose Bowl
- _____ 470. M - Horse Medallion Ftd. Rose Bowl - Silver & Gold Irid.
- _____ 471. B - Ftd. Horse Medallion Nut Bowl
- _____ 472. B - 10½" Ftd. 8-Ruffle Stag & Holly Bowl
- _____ 473. B - 6", 6-Ruffle Pepper Plant Hat Shape Bowl
- _____ 474. B - 5¼", 6-Ruffle Feathered Serpent Bowl
- _____ 475. B - Hen Covered Dish - Sowerby
- _____ 476. B - 9" Dugan Ruffle Fanciful Bowl
- _____ 477. B - 7¼" Spat. Ftd. Ruffle Stag & Holly Bowl
- _____ 478. B - 9" Round Ball Ftd. Two Flowers Bowl
- _____ 479. B - 9¾", 8-Ruffle Little Flowers Bowl - Scarce & Pretty

- _____ 480. G - 8" Imp. Rd. Shell & Sand Bowl - Helios
- _____ 481. M - 10¼", 6-Ruffle Headdress Bowl - Nice Big One
- _____ 482. M - 6" Ruffle Sailboats Bowl
- _____ 483. M - Orange Peel Punch Bowl - 6 Cups, 3 Sherbets w/no base
- _____ 484. M - 8" Ruffled Imp. Windmill Bowl
- _____ 485. M - 3 pc. Double Scroll Console Bowl and Candlesticks
- _____ 486. M - Imp. Premium Candlesticks - Pr.
- _____ 487. M - Spiral Candlesticks - Pr.
- _____ 488. M - Spiral Candlesticks - Pr.
- _____ 489. M - 9" Imp. Delta Base Candlesticks - Pr.
- _____ 490. M - 6½" Tree Bark Candlesticks - Pr.
- _____ 491. Vaseline Stretch - 4½" Tall, Rolled Rim, 2 Dia., Collar Base Bowl

**Approx. 75 Pcs. Sold at
End of Auction, Not Cataloged**

CARNIVAL GLASS AUCTIONS CALENDAR OF EVENT

October 2, 1999

at Boonville, Missouri

October 16, 1999

A.C.C.G.C. at Wichita, Kansas

November 13, 1999

at Boonville, Missouri

December 4, 1999

at Boonville, Missouri

January 8, Year 2000

at Boonville, Missouri

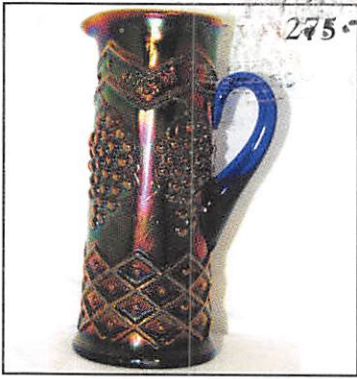
9th Annual Extravaganza

For Free Color Catalogs & Information Write:
Mickey Reichel

516 Third Street, Boonville, MO 65233-1536
or Call: 660-882-5292 days or 660-882-5283 evenings

If you haven't been to Boonville, Missouri and attended a Mickey Reichel Auction, I'm extending a special invitation to one of our very best yet.

Thank You, Mickey



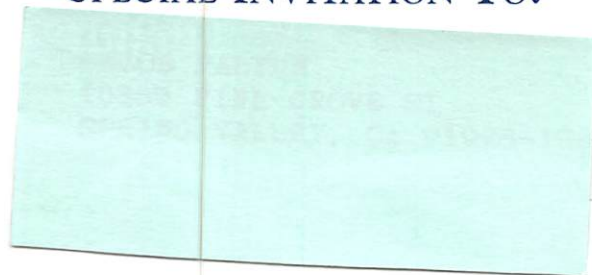
MICKEY REICHEL
ANTIQUE & AUCTION, L.C.
 516 THIRD STREET
 BOONVILLE, MO 65233-1536



FIRST CLASS MAIL



SPECIAL INVITATION TO:



"EXCITEMENT BUILDS AS THE CROWD GATHERS AT THE MICKEY REICHEL AUCTION COMPANY!"