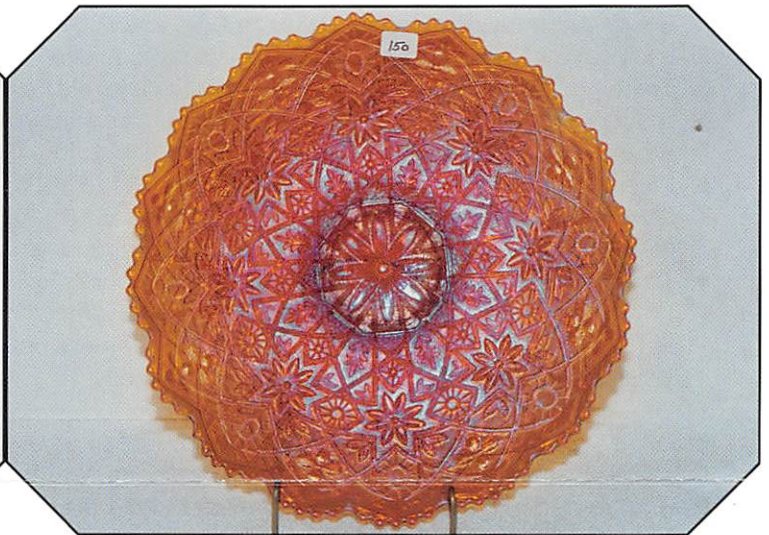


Outstanding Carnival Glass

AUCTION

Saturday, August 28, 1999 – 9:30 A.M.

Collection of Chris and Donna Sanders



*Holiday Inn -- Wentzville
900 Corporate Parkway
Wentzville, MO
(Exit 212a off of I-70)
Call (314) 327-7001 for reservations*

Seeck Auctions

JIM and JAN SEECK

515-424-1116

SATURDAY, August 28, 1999 -- 9:30 a.m. Holiday Inn -- Wentzville, MO

Seeck Auctions is pleased to bring you the outstanding Carnival Glass collection of Chris and Donna Sanders of Colorado and formerly of Arizona. Chris and Donna have put together a fabulous collection of glass over the past few years. There is a great line up of Hearts and Flowers pieces as well as many rarities. They have enjoyed the clubs and "the hunt" and will continue collecting.

Nice to be back in St. Louis (Wentzville) again! Please call the Holiday Inn and make your reservations today. The auction is filled with many fine pieces. You will be pleasantly surprised!

PREVIEW: Friday, August 27, 3:00 P.M.

NO BUYER'S PREMIUM.

RESERVATIONS: Call (314) 327-7001 (Please ask for the Seeck Auction block of rooms)

WRITE-IN BID POLICY

1. Write-in bids will be accepted by sending the numbers of the item(s) desired and the amount bid on each to:
Seeck Auctions, PO Box 377, Mason City, Iowa 50402.
2. If known by Auction Company, bids may be done over the telephone. (515)424-1116.
3. There is a \$5 handling charge for each successful bid. Shipping and insurance charges are additional.
4. Bidders will be notified by phone if their bid(s) are successful. This call will be made 1 - 3 days after the auction.
5. Please have all bids in by Wed., Aug. 25th. All bids (by mail, phone or **email**) after this date may not be carried out.
6. Please place bids in the following increments: \$1 to \$300 - \$5 increments \$300 up - \$25 increments.
7. **If you do not receive an item that sold for less than your bid, assume we cancelled your bid because the piece of glass had below average color, manufacture problem, damage or was not listed correctly.**
8. To receive price lists send: \$20 -- for this auction and next 7 auctions
\$5 -- for only this auction or individual auction (please specify)

Send to the above address. (please allow 2 - 3 weeks delivery for price lists) **(Make checks payable to: Jan Seeck)**

(All auction results are available on our website!)

Email us with your write-in bids! Our email address is: seeckauction@willowtree.com

Continue to include the numbers of the item(s) you would like to bid on and amount bid on each, please include your telephone number. ALSO visit us at our website: <http://www.willowtree.com/~seeckauction>

***** Email Bids must be in by Wednesday, August 25th *****

- | | |
|---|--|
| ___ 1. Persian Medallion bon bon - blue - pretty | ___ 17. Holly 3 in 1 edge bowl - blue - nice |
| ___ 2. Persian Medallion bon bon - marigold | ___ 18. Thistle banana shaped ftd bowl - green - very pretty |
| ___ 3. Octagon 4 pc. wine set - marigold - pretty | ___ 19. Thistle banana boat shaped ftd bowl - marigold |
| ___ 4. Vineyard 7 pc. water set - marigold - dark & pretty | ___ 20. Fluffy Peacock 7 pc. water set - amethyst - unbelievably beautiful set, very scarce & desirable |
| ___ 5. Grape & Cable 7" ruffled bowl - purple | ___ 21. Cherry Chain 6" plate - marigold - super pretty, dark & nice |
| ___ 6. Grape & Cable 7" ruffled bowl - green | ___ 22. Beaded Bullseye 11" vase - green |
| ___ 7. Target 6" squatty vase - peach opal - short & squatty | ___ 23. Peacock & Grape IC shaped bowl - green |
| ___ 8. Peacock & Dahlia 7" IC shaped bowl - lime green - scarce color | ___ 24. Peacock & Grape IC shaped bowl - blue |
| ___ 9. M'burg Blackberry Wreath 7" IC shaped bowl - green - satin | ___ 25. 1914 Parkersburg Elks 7" plate - blue - very rare & highly desirable |
| ___ 10. Fruits & Flowers bon bon - aqua opal - pastel & super, a beauty | ___ 26. Blackberry Open Edge ruffled hat - green |
| ___ 11. Fruits & Flowers bon bon - ice blue - pretty example & very scarce | ___ 27. Butterfly & Berry 7 pc. water set - blue - very rare & pretty set, pitcher has crack around part of the base |
| ___ 12. Fruits & Flowers bon bon - blue - electric & pretty | ___ 28. Butterfly & Berry water pitcher - marigold - dark & super, as pretty as these get |
| ___ 13. Strawberry 9" plate w/BW back - green | ___ 29. Butterfly & Berry tumblers (2) - marigold - choice |
| ___ 14. Strawberry 9" plate w/BW back - purple | ___ 30. M'burg Deep Grape flared compote - green - extremely rare compote & pretty, super piece! |
| ___ 15. Strawberry 9" plate w/BW back - marigold - nice | |
| ___ 16. Holly 3 in 1 edge bowl - aqua - very rare color, pretty marigold irid., a beauty | |

- ___ 31. Three Fruits spt ftd ruffled bowl - purple - very pretty
- ___ 32. Three Fruits spt ftd ruffled bowl - amethyst - has pretty red irid.
- ___ 33. Three Fruits spt ftd ruffled bowl - green - has stretchy irid.
- ___ 34. **Horse Medallion JIP shaped ftd bowl - pink - unusual color, not many around**
- ___ 35. Horse Medallion JIP shaped ftd bowl - blue - nice
- ___ 36. Grape & Cable Variant PCE bowl w/plain back - purple - super pretty
- ___ 37. Bells & Beads 7" ruffled bowl - purple - pretty
- ___ 38. **Grape & Cable giant ruffled compote - purple - best I've sold, beautiful**
- ___ 39. M'burg Primrose ruffled bowl - green - satin
- ___ 40. **N's Town Pump - purple - a carnival glass classic**
- ___ 41. Two Flowers spt ftd round bowl - blue - pretty
- ___ 42. Nippon PCE bowl w/ribbed back - ice blue - always in demand
- ___ 43. Nippon PCE bowl w/BW back - white - scarce color & nice
- ___ 44. Grape & Cable 7" handgrip plate - green - kinda scarce
- ___ 45. Grape & Cable 7" handgrip plate - marigold - super pretty, also scarce
- ___ 46. Butterfly Bush salver or ruffled compote - marigold
- ___ 47. Constellation ruffled compote - white
- ___ 48. Pond Lily bon bon - blue
- ___ 49. M'burg Hanging Cherris 7" IC shaped bowl - amethyst - satin & pretty
- ___ 50. **Farmyard 3 in 1 edge bowl - purple - absolutely super irid. on this highly desirable & rare piece**
- ___ 51. M'burg Holly sprig ruffled bowl - amethyst - radium
- ___ 52. **Raspberry 7 pc. water set - purple - very nice set, scarce**
- ___ 53. Raspberry water pitcher - marigold - nice
- ___ 54. Raspberry tumbler - marigold
- ___ 55. **Wishbone & Spades chop plate - purple - extremely rare & highly desirable, pretty**
- ___ 56. Drapery 8" vase - white - scarce, feet look good
- ___ 57. **Paneled Dandelion 6 pc. tankard water set - blue - very pretty, scarce set**
- ___ 58. **Paneled Dandelion tankard water pitcher - amethyst - a super example for these**
- ___ 59. **Paneled Dandelion tankard water pitcher - marigold - even color from top to bottom, a nice one**
- ___ 60. Paneled Dandelion tumbler - marigold - matches pitcher
- ___ 61. **Hearts & Flowers ruffled bowl w/ribbed back - aqua opal -has opal tips w/very pretty marigold irid., a beautiful & super rare bowl!**
- ___ 62. **Hearts & Flowers ruffled bowl w/ribbed back - aqua - also very rare color & has pretty marigold overlay, nice**
- ___ 63. **Hearts & Flowers ruffled bowl w/ribbed back - ice green - very scarce color, nice**
- ___ 64. **Hearts & Flowers ruffled bowl w/ribbed back - purple - pretty irid. on this very scarce bowl**
- ___ 65. **Hearts & Flowers ruffled bowl w/ribbed back - blue - might be the rarest color of all of them**
- ___ 66. Hearts & Flowers ruffled bowl w/ribbed back - ice blue - scarce & nice
- ___ 67. Hearts & Flowers ruffled bowl w/ribbed back - white - nice
- ___ 68. Hearts & Flowers ruffled bowl w/ribbed back - marigold - scarce
- ___ 69. Grape & Cable PCE salad bowl - purple - rare bowl
- ___ 70. **Stippled Three Fruits ruffled bowl w/ribbed back - aqua opal - has light butterscotch irid., very scarce & highly desirable, a nice bowl**
- ___ 71. **Stippled Three Fruits ruffled bowl w/ribbed back - marigold - very pretty & scarce**
- ___ 72. **Tree Trunk midsize 12" vase - purple - nice, scarce**
- ___ 73. Open Rose 9" plate - amber - scarce & desirable
- ___ 74. Little Flowers 3 in 1 edge 10" bowl - green - nice
- ___ 75. **NUART Homestead chop plate - amber - incredible! very, very rare, what everyone is look'in for**
- ___ 76. M'burg Blackberry Wreath 3 in 1 edge sauce - green - satin
- ___ 77. **Good Luck 9" plate w/BW back - purple - super pretty example, rare**
- ___ 78. **Good Luck 9" plate w/BW back - green - rare, has silvery irid.**
- ___ 79. Blackberry Wreath ruffled hat - red - cherry red color, nice
- ___ 80. Chrysanthemum ruffled bowl - green - scarce
- ___ 81. Chrysanthemum ruffled bowl - marigold - pretty
- ___ 82. Horse Medallion ftd rosebowl - blue - scarce color
- ___ 83. **Ten Mums tankard water pitcher - white - extremely rare & pretty pitcher, not many opportunities to buy a great pitcher like this**
- ___ 84. Ten Mums tumbler - white
- ___ 85. Pinecone saucer shaped 6" plate - green - very pretty
- ___ 86. Vintage 7" plate - green - scarce
- ___ 87. **M'burg Wild Rose large size kerosene lamp - amethyst - extremely rare & pretty, has manufacture open bubble on bottom of base which you cannot see, 6 3/4" base, 9 1/2" tall, WOW**

- ___ 88. **M'burg Wild Rose middle size kerosene lamp - green - super pretty & very rare, another great one, 6 1/4" base, 10" tall**
- ___ 89. Three Fruits dome ftd ruffled bowl - green
- ___ 90. **Holly ruffled bowl - red - a very super piece, this looks red, cherry & pretty**
- ___ 91. Holly 6 ruffled bowl - white - nice
- ___ 92. Holly 6 ruffled bowl - green - super!
- ___ 93. **Imperial Flute water pitcher - purple - extremely rare pitcher, super pretty on one side**
- ___ 94. Feather Stitch ruffled bowl - blue - silvery
- ___ 95. **Grape & Cable fruit bowl - green - scarce color & nice**
- ___ 96. Grape & Cable fruit bowl - purple - super pretty!
- ___ 97. Daisy Wreath ruffled bowl - peach opal - nice
- ___ 98. **Fine Rib 10 1/2" vase - red - very pretty example, nice!**
- ___ 99. Fine Rib 9 1/2" vase - aqua - very pretty, some would call this sapphire
- ___ 100. **Hearts & Flowers 9" plate - lime green - extremely rare color for this very desirable plate, a great opportunity**
- ___ 101. **Hearts & Flowers 9" plate - ice blue - also very rare, nice dark ice blue color**
- ___ 102. **Hearts & Flowers 9" plate - white - super rare & pretty**
- ___ 103. **Hearts & Flowers 9" plate - green - also extremely rare color, not many around**
- ___ 104. **Hearts & Flowers 9" plate - purple - extremely rare & desirable**
- ___ 105. **Hearts & Flowers 9" plate - marigold - very dark w/even irid.**
- ___ 106. Strawberry bon bon - amber - scarce color
- ___ 107. Strawberry bon bon - vaseline - no marigold overlay, scarce
- ___ 108. **Grape Arbor tankard water pitcher - white - frosty & super, a great example of a scarce pitcher**
- ___ 109. Grape Arbor tumbler - white - nice
- ___ 110. Grape Arbor tankard water pitcher - marigold - very pretty example
- ___ 111. Grape Arbor tumbler - ice blue - nice
- ___ 112. **Leaf & Beads rosebowl - reninger blue - not many around in this color, nice**
- ___ 113. Leaf & Beads rosebowl - aqua opal - butterscotch & nice
- ___ 114. **M'burg Seaweed 10" 3 in 1 edge bowl - green - satin & very, very scarce**
- ___ 115. **M'burg Seaweed 10" 3 in 1 edge bowl - marigold - satin & pretty, also very scarce**
- ___ 116. M'burg Holly Sprig crimped edge deep 6 1/2" bowl - green - radium, very scarce
- ___ 117. **Singing Birds 7 pc. water set - green - highly desirable set, nice**
- ___ 118. Fenton's Three Fruits 12 sided plate - green
- ___ 119. **Stippled Grape & Cable 9" plate w/ribbed back - sapphire - extremely rare & desirable plate, nice**
- ___ 120. Stippled Grape & Cable 9" plate w/BW back - green - bottom of base has been buffed, hard to find with BW back
- ___ 121. N's Thin Rib 7" JIP shaped vase - green - scarce whimsy shape
- ___ 122. Dragon & Lotus ruffled bowl - amethyst opal - extremely rare & pretty bowl, chip on edge
- ___ 123. Dragon & Lotus ruffled bowl - marigold - super pretty
- ___ 124. Two Flowers spt ftd rosebowl - blue - scarce rosebowl
- ___ 125. **Stippled Grape & Cable 8 pc. punch set - blue - super pretty set, extremely rare**
- ___ 126. Grape & Cable spt ftd 9" plate - marigold
- ___ 127. **Orange Tree ruffled bowl - red - cherry red color, super pretty irid, a dandy**
- ___ 128. Orange Tree 6 ruffled bowl - white
- ___ 129. **Birmingham Age Herald ruffled bowl - amethyst - super rare item, not often sold, great piece!**
- ___ 130. M'burg Little Stars 7" ruffled bowl - amethyst - satin, scarce
- ___ 131. Horse Medallion ruffled ftd bowl - green - very scarce color & pretty
- ___ 132. **Orange Tree 9" plate - blue - scarce**
- ___ 133. Orange Tree 9" plate - white - also scarce
- ___ 134. Orange Tree 9" plate - clambroth - scarce
- ___ 135. **Tornado large size vase - green - minor mold roughness on base, scarce**
- ___ 136. Open Rose round bowl - blue - Imperial blue is rare
- ___ 137. **Illinois Soldiers & Sailors 7" plate - blue - extremely rare & highly desirable, nice**
- ___ 138. Panther ruffled sauce - amethyst - some would call lavender
- ___ 139. Panther ftd ruffled sauce - powder blue - nice, scarce
- ___ 140. **Dragon & Lotus IC shaped bowl - red - cherry red color, very scarce**
- ___ 141. Dragon & Lotus IC shaped bowl - amethyst
- ___ 142. Dragon & Lotus IC shaped bowl - blue - nice
- ___ 143. Dragon & Lotus IC shaped bowl - marigold
- ___ 144. Three Fruits ruffled bowl w/BW back - purple - nice
- ___ 145. **Oriental Poppy 5 pc. tankard water set - ice blue - super rare set & very pretty, a top water pitcher**
- ___ 146. Persian Garden 6" plate - white, nice
- ___ 147. **Fenton's Grape & Cable 7" ruffled bowl - red - a little towards the brick side, pretty**
- ___ 148. Fenton's Grape & Cable 7" ruffled bowl - lime green - scarce color
- ___ 149. Dragon & Lotus spt ftd ruffled bowl - green - very pretty irid.
- ___ 150. **Hattie chop plate - amber - super pretty pink irid., extremely rare w/outstanding quality**
- ___ 151. Stag & Holly large ftd deep ruffled bowl - marigold - nice

- ___ 152. Grape & Cable master IC bowl - marigold - pretty pink & yellow irid.
- ___ 153. **Stippled Grape & Cable ruffled bowl w/ribbed back - sapphire - super rare bowl w/nice irid.**
- ___ 154. Chrysanthemum large size ftd ruffled bowl - lime green - rare color, has pretty marigold overlay
- ___ 155. Chrysanthemum large size ftd ruffled bowl - blue - very pretty
- ___ 156. **Peacock at the Fountain ruffled compote - blue - extremely rare & pretty, even irid., a tough compote to find**
- ___ 157. Diamond Lace water pitcher - purple - scarce & desirable
- ___ 158. Diamond Lace tumblers (3) - purple - choice
- ___ 159. **Plaid ruffled bowl - green - very scarce color, not many around & nice**
- ___ 160. **Good Luck ruffled bowl w/ribbed back - emerald green - has pretty emerald highlights, super nice!**
- ___ 161. Good Luck ruffled bowl w/ribbed back - marigold - very pretty example
- ___ 162. Concord ruffled bowl - marigold - scarce
- ___ 163. **Horse Medallion ftd nut bowl - red - very few red known, most are red slag, pretty & extremely rare**
- ___ 164. Horse Medallion ftd nut bowl - blue - nice
- ___ 165. **Grape & Cable tankard water pitcher - purple - super pretty & very rare in the tankard shape**
- ___ 166. Double Stemmed Rose dome ftd 9" plate - white - frosty & pretty
- ___ 167. **Dreibus Parfait Sweets handgrip plate - purple - pretty & extremely desirable**
- ___ 168. M'burg Nesting Swan ruffled bowl - green - satin & pretty
- ___ 169. Grape & Cable bon bon - white - very scarce color, pretty
- ___ 170. **Stippled Peacocks PCE bowl - reninger blue - extremely rare bowl & pretty, a great addition to a Peacocks collection**
- ___ 171. N's Thin Rib midsize 12 1/2" vase - purple - small chip on base
- ___ 172. **Grape & Cable pin tray - green - nice example, scarce**
- ___ 173. Caroline handled basket - peach opal - very rare & desirable, pretty
- ___ 174. M'burg Hanging Cherries ruffled sauce - green - satin & very pretty
- ___ 175. **Hearts & Flowers ruffled compote - green - a real killer! super pretty irid., very rare color!**
- ___ 176. **Hearts & Flowers ruffled compote - reningers blue - also very pretty & tough color**
- ___ 177. **Hearts & Flowers ruffled compote - ice blue - very rare & desirable, nice**
- ___ 178. **Hearts & Flowers ruffled compote - blue - very, very pretty, has electric highlights, rare**
- ___ 179. **Hearts & Flowers ruffled compote - blue - has lavender colored irid., pretty**
- ___ 180. **Hearts & Flowers ruffled compote - purple - very pretty irid., scarce**
- ___ 181. **Hearts & Flowers ruffled compote - aqua opal - super example**
- ___ 182. Hearts & Flowers ruffled compote - white - best example I've seen
- ___ 183. Hearts & Flowers ruffled compote - marigold - light in color but has super pretty yellow irid.
- ___ 184. **Double Scroll candlesticks (pair) - red - very rare & desirable, nice**
- ___ 185. **Peacocks 9" plate w/ribbed back - white - super pretty example, a dandy**
- ___ 186. Grape & Cable candlestick - marigold
- ___ 187. **N's Wide Panel epergne - green - has normal nicks on top around holes, very rare, pretty**
- ___ 188. Floral & Grape 5 pc. water set - marigold - nice matching set
- ___ 189. Open Rose ftd centerpiece bowl - amber - rare shape for these, nice
- ___ 190. **Greek Key 5 pc. tankard water set - purple - pretty set, has minor manufacture spots on lip**
- ___ 191. Inverted Feather cracker jar - green - pretty
- ___ 192. **M'burg Rosalind 10" IC shaped bowl - green - very rare bowl, satin & nice, has epoxy on base**
- ___ 193. **Fanciful ruffled bowl - peach opal - scarce & desirable**
- ___ 194. Fanciful ruffled bowl - white - very pretty
- ___ 195. **Poppy Show 9" plate - purple - rare color, purple is a tough color**
- ___ 196. **Poppy Show 9" plate - marigold - highly desirable & nice**
- ___ 197. **Poppy Show 9" plate - white - scarce & nice**
- ___ 198. Bouquet water pitcher - marigold - pretty
- ___ 199. Bouquet tumbler - marigold
- ___ 200. **Strawberry Scroll water pitcher - blue - super pretty pitcher, a wonderful shape**
- ___ 201. Harvest Poppy ruffled compote - purple - scarce
- ___ 202. Greek Key ruffled bowl w/ribbed back - marigold - pretty even irid.
- ___ 203. **Grape & Cable water pitcher - purple - nice**
- ___ 204. Grape & Cable tumblers (2) - purple - choice
- ___ 205. Grape & Cable water pitcher - marigold - pretty
- ___ 206. N's Peacock at Urn IC sauce - blue - electric & super
- ___ 207. **Persian Garden 11" IC shaped bowl - peach opal - very pretty & rare, impressive piece**

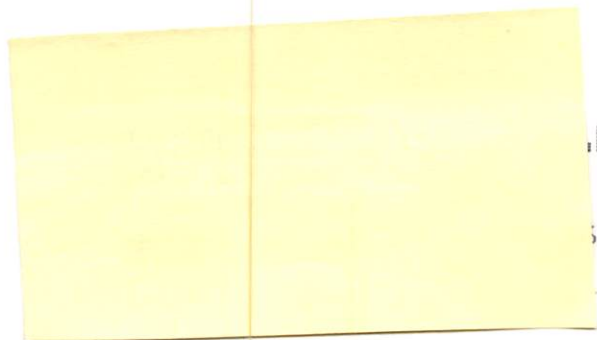
- ___ 208. M'burg Hobnail Swirl 13" vase - amethyst - stretched more than most, has nick on base
- ___ 209. M'burg Hobnail Swirl 9 1/2" vase - green - scarce
- ___ **210. Grape & Cable candle lamp - green - rare & desirable, nice**
- ___ 211. Fine Cut & Roses rosebowl - ice blue - very nice
- ___ 212. Fine Cut & Roses rosebowl - marigold
- ___ **213. Hearts & Flowers PCE bowl w/ribbed back - green - very rare shape for green, a toughie**
- ___ **214. Hearts & Flowers PCE bowl w/ribbed back - marigold - lots of pretty pink irid.**
- ___ 215. N's Stippled Rays PCE bowl - purple - stunning
- ___ **216. Rose Show Variant ruffled bowl - reninger blue - very, very rare, highly desirable, a must**
- ___ 217. Orange Tree IC shaped bowl - green - very rare color
- ___ 218. Orange Tree IC shaped bowl - blue - pretty
- ___ **219. Grape & Cable whiskey decanter - purple - highly desirable**
- ___ 220. Grape & Cable shot glass - purple
- ___ **221. Stippled Three Fruits 9" plate w/ribbed back - blue - rare color & highly desirable**
- ___ 222. Stippled Three Fruits 9" plate w/ribbed back - marigold - scarce & pretty
- ___ 223. Good Luck PCE bowl w/BW back - green - scarce
- ___ 224. Stag & Holly spt ftd ruffled bowl - green - scarce color
- ___ **225. Grape & Cable midsize punch bowl & base - purple - very rare size, nice**
- ___ 226. Wishbone 10" ruffled bowl - green - scarce
- ___ **227. Spector's Department Store Heart & Vine 9" plate - marigold - very pretty, very rare, a great plate**
- ___ 228. Apple Blossom Twigs ruffled bowl w/smooth edge - peach opal - super nice
- ___ **229. N's Peacock at Urn master IC bowl - white - frosty & super, as nice as they get**
- ___ 230. Butterfly & Tulip 2 sides up bowl - marigold
- ___ **231. Acorn Burrs 4 pc. table set - purple - creamer is cracked, otherwise nice**
- ___ 232. Brooklyn Bridge ruffled bowl - marigold - scarce
- ___ **233. Blueberry water pitcher - marigold - super neat pitcher, nice even irid.from top to bottom**
- ___ 234. Fenton's Peacock at Urn IC shaped bowl - blue - pretty
- ___ **235. Fern Brand Chocolates double handgrip plate - purple - nice - hot, hot, hot!**
- ___ 236. Four Seventy Four milk pitcher - marigold - nice
- ___ **237. M'burg Trout & Fly IC shaped bowl - green - satin & super, very scarce & desirable**
- ___ 238. Grape & Cable sweetmeat - purple - nice
- ___ **239. Peacocks ruffled bowl w/ribbed back - white - frosty & pretty, a beauty**
- ___ **240. Peacocks ruffled bowl w/ribbed back - purple - also very pretty**
- ___ 241. N's Bushel Basket - amethyst - very pretty example
- ___ 242. N's Bushel Basket - blue
- ___ **243. M'burg Courthouse ruffled bowl - amethyst - radium & pretty, scarce & desirable**
- ___ **244. Double Star 6 pc. water set - green - very scarce set**
- ___ 245. M'burg Blackberry Wreath 10" 3 in 1 edge bowl - green - radium, very rare in radium & nice, minor pinpoint on base
- ___ **246. Grape & Cable orange bowl - purple - nice, scarce, some call this the large fruit bowl**
- ___ 247. Strawberry ruffled bowl w/plain back - purple - nice
- ___ **248. Lattice & Poinsettia ftd ruffled bowl - blue - very pretty, has electric highlights**
- ___ 249. Mikado IC shaped giant compote - marigold - nice
- ___ **250. Rose Show ruffled bowl - aqua opal - lots of opal, pastel & pretty, tiny nick on flat of base**
- ___ 251. Leaf Chain IC shaped bowl - white - very pretty
- ___ 252. Enameled Shasta Daisy water pitcher - ice green - rare color & nice
- ___ 253. Leaf Chain 9" plate - marigold - scarce
- ___ **254. Grape & Cable hatpin holder - green - always desirable**
- ___ **255. Grape & Cable hatpin holder - purple - always in demand**
- ___ **256. Grape & Cable hatpin holder - marigold - pretty, even color**
- ___ 257. Dugan's Cherries ruffled bowl - peach opal - scarce bowl
- ___ 258. Beaded Cable rosebowl - aqua opal - nice
- ___ 259. Beaded Cable rosebowl - marigold - pretty
- ___ **260. Stippled Peacocks ruffled bowl w/ribbed back - marigold - very pretty example, nice**
- ___ 261. M'burg Hanging Cherries 10" IC shaped bowl - marigold - satin & pretty
- ___ 262. Captive Rose 9" plate - blue - silvery
- ___ 263. Butterfly & Berry butter dish - blue - scarce if you need it
- ___ 264. Persian Garden 11" ruffled bowl - white - frosty & pretty w/lots of irid.
- ___ 265. Grape & Cable 9" plate w/plain back - purple - super
- ___ **266. Stippled Grape & Cable Old Rose Distillery 9" plate - green - highly desired plate, nice**
- ___ **267. M'burg Strawberry Wreath 8" crimped edge bowl - amethyst - radium & nice**

- ___ 268. **N's Corn vase w/plain base - marigold - rare color, desirable**
- ___ 269. **N's Corn vase w/stalk base - ice green - scarce & nice**
- ___ 270. **N's Corn vase w/plain base - white - frosty w/pretty irid.**
- ___ 271. Fruits & Flowers 7" ruffled bowl - green - very pretty
- ___ 272. **Leaf Chain 7" ruffled bowl - red - cherry red color, very rare**
- ___ 273. Rambler Rose 5 pc. water set - blue - scarce set, pitcher is silvery
- ___ 274. Holly IC shaped bowl - green - pretty
- ___ 275. **Rose Show 9" plate - white - pretty example, scarce & desirable**
- ___ 276. Grape & Cable butter dish - purple - nice
- ___ 277. Grape & Cable butter dish - marigold - dark & pretty
- ___ 278. **Stippled Good Luck ruffled bowl w/ribbed back - blue - very nice**
- ___ 279. Stippled Good Luck ruffled bowl w/ribbed back - marigold - light color
- ___ 280. Little Flowers 10" IC shaped bowl - blue - pretty
- ___ 281. **Lions 7" plate - marigold - very rare plate & highly desirable, nick off back point**
- ___ 282. Fenton's Grape & Cable ftd fruit bowl - blue - has plain interior, very pretty
- ___ 283. Lions ruffled bowl - blue - nice
- ___ 284. Good Luck PCE bowl w/ribbed back - purple - very pretty
- ___ 285. Three Fruits 9" plate w/BW back - purple
- ___ 286. Holly 9" plate - blue - very nice, scarce
- ___ 287. **Two Flowers large ftd IC shaped bowl - aqua - rare color, not many around**
- ___ 288. Grape & Cable 9" plate w/BW back - green
- ___ 289. Grape & Cable 9" plate w/BW back - purple - nice
- ___ 290. **M'burg Hobnail Swirl rosebowl - amethyst - nice**
- ___ 291. Orange Tree hatpin holder - blue - minor repair on toe
- ___ 292. Orange Tree hatpin holder - marigold - dark, nice, normal toes
- ___ 293. **Dragon & Lotus 9" plate - blue - extremely rare, has silver irid., has a minor nick on back of one point**
- ___ 294. Poppy pickle dish - blue - pretty
- ___ 295. Four Flowers 9" plate - olive green - scarce
- ___ 296. **Nippon ruffled bowl w/BW back - purple - scarce**
- ___ 297. Rustic midsize 16" vase - white - nice
- ___ 298. Ski Star 10" ruffled bowl - purple
- ___ 299. Stream of Hearts ruffled compote - marigold - pretty
- ___ 300. **Stippled Grape & Cable 10" ruffled bowl w/BW back - blue - very pretty, very scarce**
- ___ 301. Stag & Holly large IC shaped ftd bowl - blue - nice
- ___ 302. Peacock at the Fountain punch cups (4) - ice blue - choice
- ___ 303. **Rustic 18 1/2" funeral vase - marigold - nick on one hobnail towards bottom of vase, nice**
- ___ 304. Loganberry vase - green - scarce
- ___ 305. Orange Tree w/trunk 9" plate - marigold - nice
- ___ 306. Round Up IC shaped bowl - white - pretty
- ___ 307. Horse Medallion 7" plate - marigold - scarce
- ___ 308. Two Flowers large ftd ruffled bowl - blue
- ___ 309. **Grape & Cable banana boat - purple - always in demand**
- ___ 310. Petal & Fan large ruffled bowl - purple - pretty!
- ___ 311. Wishbone ftd ruffled bowl - purple
- ___ 312. Fanciful IC shaped bowl - amethyst - nice
- ___ 313. **Eat Paradise Sodas 6" adv. plate - amethyst - pretty!**
- ___ 314. M'burg Blackberry Wreath 10" ruffled bowl - marigold - satin
- ___ 315. **Stippled Strawberry ruffled bowl - purple - has super blue highlights**
- ___ 316. Fishscale & Beads 6" plate - purple
- ___ 317. **Fenton's Peacock at Urn 9" plate - white - scarce & desirable**
- ___ 318. Good Luck ruffled bowl w/BW back - purple - nice
- ___ 319. **Isaac Benesch & Sons adv. ruffled bowl - amethyst - scarce, nice**
- ___ 320. Tar Tan or Daisy & Cane spittoon - marigold - very dark & pretty, scarce, by Brockwitz
- ___ 321. Apple Blossom Twigs 9" plate - purple - has blue highlights, a very scarce plate
- ___ 322. Stag & Holly spt ftd IC shaped bowl - amethyst
- ___ 323. **Stippled Peacocks 9" plate w/ribbed back - reninger blue - very pretty, very rare, a dandy**
- ___ 324. **Stippled Peacocks 9" plate w/ribbed back - blue - very pretty plate, rare**
- ___ 325. Dahlia cvd sugar & creamer - marigold - sugar is damaged, sold as pair
- ___ 326. Dragon & Lotus 3 in 1 edge bowl - amethyst - pretty
- ___ 327. Dragon & Lotus 3 in 1 edge bowl - marigold - nice
- ___ 328. Strawberry PCE bowl w/plain back - purple - nick on point
- ___ 329. Strawberry PCE bowl w/plain back - green - nick on back of one point, pretty
- ___ 330. M'burg Strawberry Wreath ruffled compote - marigold - radium, buffed on base
- ___ 331. Peacock & Grape ruffled bowl - marigold - minor nick on one point
- ___ 332. Pond Lily bon bon - white - chip on base

Seeck Auctions

P.O. Box 377
Mason City, Iowa 50402

First Class
U.S. Postage
PAID
Mason City, IA
Permit No. 448



501

