

BURNS

AUCTION SERVICE

Great Lakes Carnival Glass Club

Glass Bash Auction

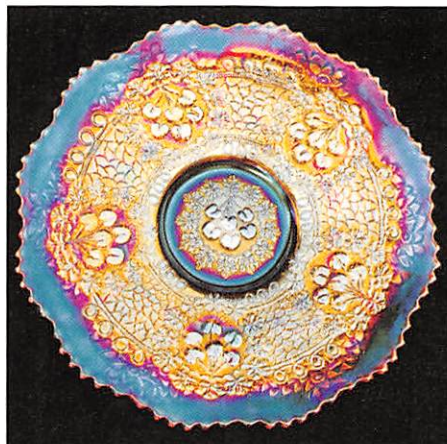
Friday & Saturday
August 20 & 21, 1999

Friday: Preview at 5:00 P.M., Auction at 7:00 P.M.
Lots 1-150

Saturday: Preview at 8:00 A.M., Auction at 10:00 A.M.
Lots 151-End

at the
Sheraton Hotel – Lansing
925 S. Creyts Road
Lansing, Michigan 48917
(517) 323-7100

(Exit Creyts Road off I-496 – located on northeast corner)



It seems the older I get, the faster time goes by...I don't like it...I don't like it at all!!!...Anyway this year we moved up the calendar ladder by having the Great Lakes Carnival Glass Bash Auction in late summer instead of November (this will be the first time in years where I'll be somewhere else when I see my first snowflake).

This year's selection of glass is the second half of the Fred and Norene Andreatta Collection of Ohio. We sold their Millersburg at A.C.G.A. in July, so we're bringing their Dugan here. There's a wide range of items of all makers in all colors, something for everyone. Hope you'll enjoy.

The Sheraton Hotel of Lansing will host the event. There has been a prior A.C.G.A. convention at this location, and a fine one it is!

The hotel is located at the northeast corner of the Creyts Road Exit just off I-496. You can even see the facility from the exit.

The auction runs in conjunction with the Great Lakes Bash starting Wednesday and ending Saturday. For reservations you may call the hotel direct at (517) 323-7100, and for further information on the convention, call Mark Richter at (248) 645-0811.

Come and join us, you won't be sorry!

CHECK OUT BURNS AUCTION SERVICE ON THE WEB!

Visit our new Web site for information on upcoming auctions, complete auction listings and photos of auction highlights. You can e-mail your bids or requests for information.

<http://zeus.kspress.com/woodslnd/burnsauction> e-mail: brnzauctsv@aol.com

BURNS AUCTION SERVICE

Tom Burns
P.O. Box 608
Bath, New York 14810
(607) 776-7942

Bill Richards
44 Water St., Poland, OH 44514
(330) 757-2001
FAX (330)-757-4917

Bill Richards, III
2253 Country Lane
Poland, OH 44514
(330) 755-2620

Mail Bids honored under the following conditions.

1. No deposit required, Bidders will take full responsibility to honor any and all bids we execute for them. Payment in full plus postage and handling required after notification and before we ship any item to them.
2. Items are bid on in perfect condition with average or above average iridescence OR as listed in the brochures. Bids will not be carried out when damage on an item has been found during the auction. **PEOPLE PRESENT AT AUCTION ARE RESPONSIBLE FOR FINDING ANY PINHEADS, WEAR, SPOTTINESS, MANUFACTURER'S DEFECTS OR ANY OTHER MINOR FLAWS, ETC.**
3. Successful bidders will be notified by collect call from the auctioneer (**so be sure to include the phone number**).
4. Phone inquiries about the glass or any other questions are welcome.
5. If you have some other person at the auction bidding for you, they must pay for the item before taking it.
6. Any terms or conditions given the day of the auction will supersede any previously published information.
7. Mail, e-mail, fax and phone bids are due by Wednesday, August 11, 1999.

- | | |
|---|--|
| _____ 1. European Split Diamond Miniature Creamer – Mari. | _____ 18. N. Wishbone Ftd. Ruffled Bowl w/ Ruffles and Rings Ext. – Mari. (satiny) |
| _____ 2. Maker (?) Vintage Miniature Creamer – Mari. (very scarce; unusual) | _____ 19. N. EIGHT SIDED HANDLED BUSHEL BASKET – ICE GREEN (RARE AND VERY NICE; A REALLY NICE EXAMPLE) |
| _____ 3. European Block Small Creamer – Mari. | _____ 20. N. GOOD LUCK 8 RUFFLED BOWL W/ RIBBED EXT. – BLUE / ELEC. BLUE (A GREAT IRIDIZED EXAMPLE; MAY NOT BE EVEN BUT IS SUPER) |
| _____ 4. Maker (?) Panelled Creamer – Mari. | _____ 21. N. Good Luck 8 Ruffled Bowl w/ Basketweave Ext. – Purp. (very scarce; has excellent irid.) |
| _____ 5. Sowerby Pineapple Creamer – Amyth. (scarce) | _____ 22. N. Good Luck Bowl w/ PCE and Ribbed Ext. – Mari. (scarce; has a nice iridized finish) |
| _____ 6. Dugan Wreathed Cherry Creamer – Mari. (nice color) | _____ 23. N. Good Luck Bowl w/ PCE and Basketweave Ext. – Mari. (satiny finish) |
| _____ 7. Fenton Panelled Apple Breakfast Creamer – Dk. Mari. (nice color) | _____ 24. (6) N. Acorn Burr ind. Round Berry Bowls – Dk. Mari. (very nice color; selling so much each for set) |
| _____ 8. Westmoreland Estate Breakfast Creamer – P. Opal. | _____ 25. N. Ivy Town Pump – Purp. (a rare item w/ nice irid.; has chip on base) |
| _____ 9. Westmoreland Lustre and Clear Breakfast Creamer – Mari. | _____ 26. N. Daisy and Plume Stemmed Ruffled Compote w/ Fern Int. – Amyth. (nice color) |
| _____ 10. N. POPPY SHOW PLATE – DK. MARI. (RARE AND VERY DESIRABLE; HAS MANUF. CHECK IN BASE) | _____ 27. N. Blackberry Stemmed Ruffled Compote w/ Basketweave Ext. – Amyth. (scarce) |
| _____ 11. N. POPPY SHOW RUFFLED BOWL – WHITE (VERY SCARCE; W/ NICE COLOR AND IRID.) | _____ 28. N. Singing Bird Handled Mug – Purp. (a bit lighter) |
| _____ 12. N. ROSE SHOW RUFFLED BOWL – AQUA OPAL. (RARE AND VERY DESIRABLE; GREAT COLOR AND OPAL.) | _____ 29. N. Singing Bird Handled Mug – Purp. (a bit darker) |
| _____ 13. N. ROSE SHOW RUFFLED BOWL – ICE BLUE (RARE AND VERY DESIRABLE; NICE COLOR AND IRID.) | |
| _____ 14. N. Rose Show Ruffled Bowl – White (really nice example but has a chip in a rose) | |
| _____ 15. N. ROSE SHOW RUFFLED BOWL – GREEN (VERY RARE AND DESIRABLE; HAS A GOOD SIZE CHIP ON BASE) | |
| _____ 16. N. ROSE SHOW RUFFLED BOWL – DK. MARI. (EXCELLENT EXAMPLE; NICE COLOR AND IRID.) | |
| _____ 17. N. WISHBONE FTD. PLATE W/ RUFFLES AND RINGS EXT. – MARI. (VERY RARE SHAPE W/ NICE COLOR AND IRID.) | |

- _____ 30. **MAKER (?) ABSENTEE FORMAL 6 RUFFLED VASE – AQUA OPAL. (NEVER SEEN THIS ITEM – VERY UNUSUAL; I REALLY THINK THIS COULD BE SOMETHING)**
- _____ 31. 10" N. Diamond Point Standard Swung Vase – Purp. (nice color)
- _____ 32. 12" N. Wide Panel Mid. Size Swung Vase – Mari. (nice size)
- _____ 33. N. Wide Panel Covered Butter Dish – Mari. (scarce)
- _____ 34. N. Verre de Ore Lg. Tri Cornered Bowl – Cobalt Blue / Gold (not carnival; very scarce w/ pretty good gold)
- _____ 35. **N. ORIENTAL POPPY 7 PC. TANKARD WATER SET – ICE BLUE (VERY RARE AND DIFFICULT SET; A REAL BEAUTY; HAS A CHECK IN THE HANDLE)**
- _____ 36. (6) N. Oriental Poppy Tumblers – Purp. (selling choice)
- _____ 37. **N. GRAPE ARBOR 7 PC. TANKARD WATER SET – PURP. (RARE AND VERY DESIRABLE; THE PITCHER IS SUPER)**
- _____ 38. **N. GRAPE ARBOR 7 PC. TANKARD WATER SET – MARI. (VERY SCARCE SET; HAS NICE COLOR AND IRID.)**
- _____ 39. **N. DANDELION 7 PC. TANKARD WATER SET – PURP. (VERY DESIRABLE SET; PITCHER IS REALLY NICE)**
- _____ 40. **N. THREE FRUITS STIPPLED PLATE W/ RIBBED EXT. – PURP. (VERY SCARCE W/ NICE COLOR AND IRID.)**
- _____ 41. N. Three Fruits Plate w/ Basketweave Ext. – Green (scarce w/ a satiny finish)
- _____ 42. N. Three Fruits Medallion Deep Ruffled Ftd. Bowl w/ Meander Ext. – Amyth. (unusual deep ruffle)
- _____ 43. **N. STRAWBERRY 8 RUFFLED BOWL W/ PLAIN EXT. – PASTEL MARI. (SUPER IRID.; A REALLY FINE EXAMPLE; NICE)**
- _____ 44. N. Strawberry Bowl w/ PCE and Basketweave Ext. – Odd Amyth. (a nice satiny item)
- _____ 45. **N. GREEK KEY 8 RUFFLED BOWL W/ BASKETWEAVE EXT. – PURP. (AN ABSOLUTELY SUPER EXAMPLE; GREAT MULTI-COLORED IRID.)**
- _____ 46. **N. HEARTS AND FLOWERS 8 RUFFLED BOWL W/ RIBBED EXT. – ICE BLUE (SCARCE ITEM W/ AVERAGE IRID.)**
- _____ 47. N. Star of David and Bows Domed 8 Ruffled Bowl w/ Vintage Grape Ext. – Amyth. (satiny finish)
- _____ 48. N. Graceful 6 Ruffled Vase – Lt. Mari.
- _____ 49. N. Grape Leaves 8 Ruffled Bowl – Purp. (satiny finish)
- _____ 50. N. Butterfly 2 Handled Bon Bon w/ Spiral Ext. – Purp. (very scarce item; has a small rough spot on spiral)
- _____ 51. N. Leaf and Beads Ftd. Flared Nut Bowl w/ Floral Int. – Amyth. (scarce shape w/ really nice irid.)
- _____ 52. N. Singing Birds Handled Covered Sugar Bowl – Purp. (two small chips on handle)
- _____ 53. N. Singing Birds Tumbler – Purp. (nice color)
- _____ 54. N. G & C Hat Shape From Tumbler – Mari. (nice color)
- _____ 55. **N. G & C 2 PC. CANDLE LAMP – GREEN (RARE ITEM; BASE IS BRIGHT; SHADE HAS A MARIGOLD OVERLAY; SHADE AND STICK TO BE SOLD SEPARATELY)**
- _____ 56. N. G & C Cup and Saucer – Amyth. (very scarce; set w/ nice satiny irid.)
- _____ 57. **N. G & C STIPPLED HANDLED CUP – AQUA / MARI. (VERY RARE COLOR; A GREAT ITEM)**
- _____ 58. N. G & C Breakfast Sugar and Creamer – Purp. (a super set w/ nice irid.)
- _____ 59. N. G & C Covered Powder Jar – Purp. (scarce; slight rim roughness)
- _____ 60. **N. G & C 14 PC. BANQUET PUNCH SET – AMYTH. (RARE SET; HAS A SATINY FINISH)**
- _____ 61. N. G & C Ftd. Banana Boat – Purp. (scarce; nice color and irid.)
- _____ 62. N. G & C Ftd. Banana Boat – Mari. (nice color and irid.)
- _____ 63. 7-1/2" N. G & C 2 Sided Banana Dish w/ Basketweave Ext. – Pastel Mari. (really nice irid.; sorta scarce)
- _____ 64. N. G & C Stippled Handled Bon Bon w/ Basketweave Ext. – Dk. Mari. (super, super color and irid.)
- _____ 65. N. G & C 7 Pc. Water Set – Purp. (very scarce; a nice colored set)
- _____ 66. N. G & C 7 Pc. Water Set – Dk. Mari. (super color and irid.; a very nice example)
- _____ 67. (4) N. G & C Tumblers – Purp. (nice color; selling choice)
- _____ 68. N. G & C 8 Pc. Table Size Punch Set – Purp. (scarce w/ average color; has chip on edge)
- _____ 69. N. G & C Small Size Ftd. Ruffled Fruit Bowl – Purp. (scarce; nice color and irid.)
- _____ 70. 9" N. G & C Plate w/ Basketweave Ext. – Green (scarce; has nice satiny finish)
- _____ 71. 9" N. G & C Plate w/ Basketweave Ext. – Purp. (scarce; has bright multi-colored irid.)
- _____ 72. 9" N. G & C Variant Plate w/ Basketweave Ext. – Purp. (scarce; nice color and irid.)
- _____ 73. 9" N. G & C Plate w/ Basketweave Ext. – Purp. (scarce; nice color and irid.)
- _____ 74. 9" N. G & C Variant Plate w/ Plain Ext. – Mari. (has a dark satiny finish)
- _____ 75. N. G & C 7 Pc. Berry Set – Purp. (scarce set; well matched)
- _____ 76. N. G & C 7 Pc. Ruffled Berry Set w/ Basketweave Ext. – Amyth. (very scarce set; satiny and nice)
- _____ 77. (3) N. G & C Stemmed Sherberts – Mari. (nice color; selling so much each)
- _____ 78. (2) N. G & C ind. Berry Bowls – Purp. (selling choice)
- _____ 79. 6" M'burg Cosmos Ice Cream Shaped Bowl – Green (radius and nice)
- _____ 80. 9-1/2" M'burg Seaweed Bowl w/ 3 in 1 Bowl – Green (scarce; has a manuf. stone in the body)
- _____ 81. 9-3/4" M'burg Nesting Swan 6 Ruffled Bowl – Amyth. (satiny; has light irid.)
- _____ 82. 9-1/2" M'burg Whirling Leaves 6 Ruffled Bowl – Amyth. (radius and very desirable)
- _____ 83. Imperial Grape Decanter Stopper Only – Mari. (a bunch of ya need this item; nice)
- _____ 84. (6) Imperial Grape Stemmed Wine Glasses – Mari. (selling so much for each set)
- _____ 85. **IMPERIAL GRAPE 8 PC. WINE SET – PURP. (VERY SCARCE SET; NICE COLOR AND IRID.)**
- _____ 86. Imperial Diamond and Sunburst 6 Pc. Wine Set – Mari. (scarce set that has nice color and irid.)
- _____ 87. Imperial Octagon Stemmed Wine Glass – Mari. (nice color)
- _____ 88. **IMPERIAL EMBOSSED SCROLL MINIATURE 6 RUFFLED COMPOTE – AMYTH. (VERY SCARCE ITEM W/ GREAT IRID.)**
- _____ 89. Imperial Hobstar Flower Stemmed 6 Ruffled Compote – Purp. (has to be as nice an example as I've seen)
- _____ 90. **IMPERIAL OCTAGON STEMMED ROUND JELLY COMPOTE – PURP. (RARE AND DESIRABLE; PERFECT W/ GREAT IRID.)**
- _____ 91. Imperial Fashion 7 Pc. water Set – Mari. (nice color and irid.)
- _____ 92. Imperial Fashion Breakfast Sugar and Creamer – Dk. Mari. (cute set w/ nice color)
- _____ 93. Imperial Grape 7 Pc. Water Set – Mari. (nice color)
- _____ 94. 9" Imperial Grape Plate – Mari. (satiny finish)
- _____ 95. 9" Imperial Grape Plate – Helios Green (scarce; nice color)
- _____ 96. Imperial Grape Stemmed Wine Glass – Helios Green
- _____ 97. Imperial Grape Cup and Saucer – Helios Green (nice set)
- _____ 98. Imperial Grape Stemmed Goblet – Helios Green (sorta scarce)
- _____ 99. (2) Imperial Grape Handled Punch Cups – Purp. (selling choice; nice color)
- _____ 100. **9-1/2" IMPERIAL EMBOSSED SCROLL FLAT PLATE – PURP. (SUPER EXAMPLE W/ GREAT IRID.)**
- _____ 101. 6-1/2" Imperial Grape Flat Plate – Amyth. (scarce item; has a spotty area)

- _____ 102. 6-1/2" Imperial Grape Flat Plate – Lime Green (scarce base color)
- _____ 103. 6-1/2" Imperial Grape Flat Plate – Mari.
- _____ 104. 7-1/2" Imperial Heavy Grape Flat Plate – Mari.
- _____ 105. **9" IMPERIAL OPEN ROSE FLAT PLATE – AMBER (VERY SCARCE AND PERFECT; NICE BASE COLOR)**
- _____ 106. 9" Imperial Open Rose Flat Plate – Mari. (nice color and irid.)
- _____ 107. Imperial Pansy Oval Flat Dresser Tray – Mari. (scarce item; has really nice irid.)
- _____ 108. 10" Imperial Acanthus Chop Plate – Mari. (nice color and irid.)
- _____ 109. Imperial Grape Cup and Saucer – Mari. (nice color)
- _____ 110. 18" Imperial Morning Glory Swung Funeral Vase – Purp. (scarce and desirable; great irid.; has check in base)
- _____ 111. 14-1/4" Tall x 9-1/2" Wide Imperial Ripple Squatty Swung Funeral Vase – Dk. Mari. (great shape w/ great irid.)
- _____ 112. 11" Tall Imperial Ripple Swung Vase – Purp. (super irid.)
- _____ 113. Pair 8-3/4" Tall Imperial Ripple Small Swung Vases – Helios Green (selling choice)
- _____ 114. Pair 6-1/4" Tall Imperial Ripple Small Swung Vases – Dk. Mari. (selling so much each for pair)
- _____ 115. **IMPERIAL 474 FTD. VASE – DK. MARI. (QUITE A SCARCE ITEM; NICE COLOR)**
- _____ 116. 5-3/4" Tall Imperial Miniature Morning Glory Vase – Purp. (desirable w/ nice irid.)
- _____ 117. 5-1/4" Tall Imperial Miniature Morning Glory Vase – Helios Green (nice color and a nice shape)
- _____ 118. 6" Tall Imperial Morning Glory and Drape Small Swung Vase – Dk. Mari. (nice color and irid.)
- _____ 119. Imperial Rococco Vase – Mari. (scarce w/ nice color)
- _____ 120. **PAIR 9" TALL 6 PANELLED CANDLESTICKS – WHITE STRETCH (VERY DESIRABLE PAIR; NICE COLOR AND IRID.)**
- _____ 121. (4) Unsigned Imperial Nu Art Ribbed Lamp Shades – Dk. Mari. (super set; selling for so much each set)
- _____ 122. **8-1/2" TALL IMPERIAL BEADED BULLSEYE FLARED SWUNG VASE – LIME GREEN / VASELINE (VERY RARE BASE COLOR; NOT MUCH OF AN OVERLAY)**
- _____ 123. 7" Tall Imperial Propeller Stemmed Vase – Mari. (scarce item)
- _____ 124. Imperial Propeller 6 Ruffled Small Stemmed Compote – Dk. Mari.
- _____ 125. Imperial 474 Tumbler – Aqua / Teal (rare and desirable base color; nice)
- _____ 126. Imperial Diamond Lace 6 Pc. Water Set – Purp. (scarce set w/ nice irid.)
- _____ 127. Imperial Diamond Lace Lg. 8 Ruffled Master Berry Bowl – Purp. (nice color and irid.)
- _____ 128. 9" Imperial Pansy 8 Ruffled Bowl – Purp. (nice irid.)
- _____ 128A. 8" Imperial Windmill Deep Ruffled Bowl – Purp. (absolutely outstanding irid.; very desirable)
- _____ 129. 5-1/2" Imperial Diamond Ring ind. Berry Bowl – Purp. (scarce item w/ nice irid.)
- _____ 130. **IMPERIAL ZIPPER HEART 5 PC. BERRY SET – PURP. (RARE SET W/ EXCELLENT IRID.)**
- _____ 131. Imperial Flute Toothpick Holder – Purp. (nice irid.)
- _____ 132. 6" Imperial Heavy Grape Deep Round Bowl – Lime Green / Vaseline (scarce base color)
- _____ 133. Imperial Embossed Scroll Stemmed 8 Ruffled Compote – Amber (scarce base color w/ great irid.)
- _____ 134. **IMPERIAL WIDE PANEL CRUET AND STOPPER – DK. MARI. (RARE AND UNUSUAL ITEM; PERFECT AND NICE)**
- _____ 135. Imperial Wide Panel (Flute) 8 Pc. Punch Set – Dk. Mari. (great color and irid.; very nice set)
- _____ 136. Imperial Broken Arches 10 Pc. Set – Mari. (scarce set w/nice irid.)
- _____ 137. Imperial 474 8 Pc. Punch Set – Dk. Mari. (another set w/ nice color and irid.)
- _____ 138. Imperial Wide Panel Handled Punch Cup Signed w/ Iron Cross – very scarce item.
- _____ 139. Imperial Waffle Block 8 Pc. Punch Set – Mari. (scarce set w/ nice color and irid.)
- _____ 140. **IMPERIAL WAFFLE BLOCK HANDLED FLOWER BASKET – SMOKE (RARE COLOR W/ NICE GOLDISH HIGHLIGHTS)**
- _____ 141. Imperial Waffle Block Handled Flower Basket – Teal (scarce base color)
- _____ 142. Imperial Waffle Block Handled Flower Basket – Mari.
- _____ 143. **DUGAN PASTEL SWAN – P. OPAL (RARE AND VERY DESIRABLE; OPAL ON HEAD)**
- _____ 144. Dugan Pastel Swan w/ Metal Tag – "Hotel Marlborough" – Purp. (rare and unusual item; beak not filled in; pinhead)
- _____ 145. Dugan Pastel Swan – Lime Ice Green (odd base color)
- _____ 146. Dugan Pastel Swan – Ice Green
- _____ 147. Dugan Pastel Swan – Celeste Blue
- _____ 148. Westmoreland Prisms 2 Handled Candy Dish – Teal (scarce color)
- _____ 149. Westmoreland Prisms 2 Handled Candy Dish – Amyth. (scarce)
- _____ 150. Westmoreland Prisms 2 Handled Candy Dish – Mari. (scarce)

START OF SECOND SESSION

- _____ 151. Dugan Grape Delight 6 Ftd. Ruffled Rose Bowl – Purp. (nice color and irid.)
- _____ 152. Dugan Grape Delight 6 Ftd. Ruffled Rose Bowl – White (really nice irid.)
- _____ 153. Dugan Grape Delight 6 Ftd. Round Rose Bowl – Dk. Mari. (super color and irid.; very attractive)
- _____ 154. Dugan Grape Delight 6 Ftd. Nut Bowl – Mari. (scarce color)
- _____ 155. **DUGAN PONY 10 RUFFLED BOWL – ICE GREEN (RARE AND VERY DESIRABLE; PERFECT W/ GREAT STRETCH EFFECT)**
- _____ 156. Dugan Pony 6 Ruffled Bowl – Amyth. (scarce; satiny)
- _____ 157. Dugan Pony 6 Ruffled Bowl – Dk. Mari. (nice color)
- _____ 158. Dugan Leaf Ray Handled Nappy – White (super irid.)
- _____ 159. Dugan Question Mark Handled Bon Bon – Amyth.
- _____ 160. **DUGAN QUESTION MARK / GA. PEACH AND PUZZLE FTD. PLATE – WHITE (RARE; HAS NICE FROSTY, BRIGHT IRID.)**
- _____ 161. Dugan Question Mark / Ga. Peach and Puzzle Ftd. Plate – Amyth. (scarce; satiny finish)
- _____ 162. Dugan Question Mark / Ga. Peach and Puzzle Ftd. Plate – Mari. (scarce in this color; satiny)
- _____ 163. Dugan Question Mark / Ga. Peach and Puzzle 6 Ruffled Crimped Edge Compote – Mari. (sorta radium finish; unusual shape)
- _____ 164. **DUGAN AMARYALLIS STEMMED FLARED COMPOTE – PURP. (RARE ITEM; THIS ONE HAS A LAID BACK SATINY FINISH)**
- _____ 165. **7-1/2" DUGAN FISHSCALE AND BEADS FLAT PLATE – PURP. (ABSOLUTELY FANTASTIC EXAMPLE; HAS A BRIGHT MULTI-COLORED IRID.)**
- _____ 166. 7" Dugan Fishscale and Beads Flat Plate – Mari. (satiny finish)
- _____ 167. 7-1/2" Dugan Flower and Beads Exterior Plate – Purp. (scarce; has nice interior irid.)
- _____ 168. 7" Dugan Grapevine Lattice Flat Plate – Mari. (satiny; scarce)
- _____ 169. **6-3/4" DUGAN PETAL AND FAN CRIMPED EDGE PLATE W/ JEWEL HEART EXT. – PURP. (VERY SCARCE AND VERY DESIRABLE; REALLY NICE)**
- _____ 170. **11" DUGAN WISHBONE AND SPADES FLAT CHOP PLATE – PURP. (RARE AND DESIRABLE; GOLD HIGHLIGHTS)**
- _____ 171. **9-1/2" DUGAN APPLE BLOSSOM TWIG FLAT PLATE – WHITE (SUPER EXAMPLE W/ BRIGHT IRID.)**
- _____ 172. **10-1/2" DUGAN COSMOS VARIANT CHOP PLATE – MARI. (FLAT W/ A NICE BRIGHT FINISH)**

- _____ 173. 9" Dugan Fanciful Low Ruffled Bowl / Plate – Blue (scarce base color w/ a satiny finish)
- _____ 174. 6" Dugan Fishscale and Beads Deep 8 Ruffled Bowl – Aqua / Mari. (actually a very rare color)
- _____ **175. DUGAN CHRISTMAS COMPOTE – PURP. (VERY RARE AND EXTREMELY DESIRABLE; HAS NICE BRIGHT HIGHLIGHTS)**
- _____ 176. **9-3/4" DUGAN PODS AND POSIES 6 RUFFLED BOWL – PURP (VERY SCARCE; HAS NICE BRIGHT IRID.; SUPER)**
- _____ 177. Dugan Panelled Cherries 3 Ftd. Flared Crimped Edge Bowl – Purp. (really nice example in a nice shape)
- _____ 178. 6" Dugan Deep Grape 8 Ruffled Ind. Berry Bowl w/ Compass Ext. – Purp. (very scarce item; pretty nice irid.)
- _____ 179. **DUGAN FIVE HEARTS DOMED FLARED BOWL – AMYTH. (VERY SCARCE PATTERN; HAS A SATINY FINISH)**
- _____ **180. DUGAN BUTTERFLY AND TULIP LG. SQUARE FTD. BOWL W/ I.F.F. EXTERIOR – PURP. (RARE AND VERY DESIRABLE; ONE OF THE BETTER EXAMPLES WE'VE SOLD LATELY)**
- _____ 181. Dugan Grape Arbor Lg. Deep Round Ftd. Bowl w/ I.F.F. Ext. – Amyth. (very scarce item in a scarce color)
- _____ **182. DUGAN DAHLIA 7 PC. FTD. BERRY SET – PURP. (ACTUALLY QUITE A RARE SET; SHOULD BE PERFECT)**
- _____ 183. Dugan Maple Leaf 7 Pc. Stemmed Berry Set – Purp. (scarce set; well matched)
- _____ 184. Dugan Wreathed Cherry 6 Pc. Berry Set – Purp. (scarce set; esp. the smaller ones)
- _____ **185. DUGAN GRAPEVINE LATTICE TANKARD WATER PITCHER – WHITE (RARE AND VERY DESIRABLE ITEM; GREAT IRID. AND PERFECT)**
- _____ **186. DUGAN GRAPEVINE LATTICE 7 PC. TANKARD WATER SET – PURP. (RARE SET; COMPLETE W/ A SATINY FINISH)**
- _____ 187. Dugan Grapevine Lattice Tumbler – Purp. (a super example w/ bright multi-colored irid.)
- _____ 188. Dugan Beaded Shell Tumbler – Purp. (scarce)
- _____ 189. Dugan Heavy Iris Tumbler – Amyth. (scarce; satiny)
- _____ 190. Dugan God and Home Tumbler – Blue (rare item but has a chip on the base)
- _____ 191. Dugan Peacock at the Fountain Tumbler – Purp. (scarce color for this item)
- _____ 192. Dugan Peacock at the Fountain Tumbler – Blue (nice detail and irid.)
- _____ 193. Dugan Stork in the Rushes Tumbler – Blue (nice detail and irid.)
- _____ 194. Dugan Vintage Banded Handled Mug – Mari.
- _____ 195. Dugan Fishermans Handled Mug – Lt. Mari. (light in color and irid.)
- _____ 196. Dugan Fishermans Handled Mug – Dk. Purp. (dark w/ silvery irid.)
- _____ 197. Dugan Fishermans Handled Mug – Purp. (silvery irid.)
- _____ 198. Dugan Beaded Shell Handled Mug – Amyth. (nice color and detail)
- _____ 199. Dugan Stork in the Rushes w/ Lattice Band Handled Mug – Mari.
- _____ **200. DUGAN RAMBLER ROSE 6 PC. BULBOUS WATER SET – BLUE (VERY RARE AND UNDERPRICED SET; GREAT DETAIL AND IRID.)**
- _____ **201. DUGAN VINEYARD 7 PC. BULBOUS WATER SET – PURP. (RARE SET; HARD TO FIND COMPLETE; NICE IRID.)**
- _____ 202. Dugan Vineyard 7 Pc. Bulbous Water Set – Dk. Mari. (very nice color)
- _____ 203. Dugan Floral and Grape 7 Pc. Bulbous Water Set – Mari.
- _____ 204. Dugan S Repeat Handled Punch Cup – Purp. (sorta silvery / gold)
- _____ 205. Dugan Many Fruits Round Punch Bowl and Base – Mari. (nice impressive size w/ a satiny irid.)
- _____ 206. Dugan Beaded Basket – Amyth. (scarce color)
- _____ 207. Dugan Big Basketweave Handled Flower Basket – Mari.
- _____ 208. Dugan Beaded Basket – Mari.
- _____ 209. Dugan Crackle Miniature Handled Flower Basket – Mari.
- _____ **210. DUGAN WOODLANDS FLARED VASE – MARI. (RARE ITEM W/ VERY NICE SATINY IRID.)**
- _____ 211. 10" Dugan Lined Lattice Swung Vase – Purp. (super example; excellent irid.)
- _____ 212. 8-1/2" Dugan Lined Lattice Swung Vase – Purp.
- _____ 213. 8" Dugan Vining Twigs Swung Vase – Amyth.
- _____ 214. 12" Dugan. Pulled Loop Swung Vase – P. Opal (nice opal)
- _____ 215. Dugan Mary Ann Handled Vase – Mari. (satiny finish)
- _____ 216. Dugan Twigs Ftd. Bud Vase – Amyth.
- _____ **217. DUGAN HONEYCOMB ROSE BOWL – P. OPAL. (SCARCE; NICE COLOR AND OPAL)**
- _____ 218. Dugan Wreath of Roses Rose Bowl – Mari.
- _____ 219. Dugan Double Stem Rose Domed 10 Ruffled Bowl – White (super example)
- _____ **220. DUGAN BROOKLYN BRIDGE 10 RUFFLED BOWL – MARI. (RARE AND NICE W/ A RADIUM TYPE FINISH)**
- _____ 221. Dugan Circle Scroll JIP Hat – Purp. (very scarce w/ nice irid.)
- _____ 222. Dugan Circle Scroll 2 Sided Hat – Dk. Mari. (sou. of Gettysburg; super color)
- _____ 223. Dugan Floral and Grape JIP Hat – Mari. (odd shape)
- _____ **224. DUGAN NAUTILUS NOVELTY HANDLED CREAMER – SIGNED IN SCRIPT – P. OPAL. (RARE AND DESIRABLE WHEN SIGNED; NICE)**
- _____ **225. 11" DUGAN PERSIAN GARDEN LG. ICE CREAM BOWL – P. OPAL. (RARE AND VERY DESIRABLE; GREAT OPAL AND NICE IRID.)**
- _____ **226. 9-1/4" DUGAN ROUND UP LOW RUFFLED BOWL/ PLATE – P. OPAL. (RARE AND HAS SUPER OPAL; PRETTY NICE)**
- _____ 227. 9-1/2" Dugan Pods and Posies 8 Ruffled Bowl – P. Opal. (scarce w/ nice opal)
- _____ 228. 9-1/4" Dugan Cherries 6 Ruffled Bowl w/ J.H. Ext. – P. Opal. (sorta light irid.)
- _____ 229. (5) Dugan Cherries 8 Ruffled Sauces w/ J.H. Ext. – P. Opal. (selling so much each; choice)
- _____ 230. Dugan Ski Star Domed Handgrip Plate w/ Compass Ext. – P. Opal. (scarce w/ nice detail and opal)
- _____ 231. Dugan Bell Flower 6 Ruffled Crimped Edge Bowl – P. Opal. (nice shape; light irid.)
- _____ 232. Dugan Folding Fan Stemmed 6 Ruffled Crimped Edge Compote – P. Opal. (super opal; very attractive)
- _____ 233. Dugan Six Petals 6 Ruffled Crimped Edge Bowl – P. Opal. (nice shape and opal)
- _____ 234. Dugan Holly Whirl Ruffled Handled Nappy – P. Opal. (nice opal)
- _____ 235. Dugan Starfish Stemmed 8 Ruffled Compote – Dk. P. Opal. (nice example)
- _____ 236. Dugan Question Mark Handled Stemmed Bon Bon – Dk. P. Opal. (super example)
- _____ 237. Dugan Venetian Line Interior Swirl Vase – Dk. P. Opal. (nice color)
- _____ 238. Dugan Interior Swirl Tri Cornered Rose Bowl – P. Opal. (nice item)
- _____ 239. 5-1/2" Dugan Ski Star 6 Ruffled Sauce w/ Compass Ext. – P. Opal.
- _____ 240. 5-1/2" Dugan Cherries 6 Ruffled Sauce w/ J.H. Ext. – Dk. P. Opal.
- _____ 241. Dugan Paneled Cherries Ftd. Round Crimped Edge Bowl – Dk. P. Opal. (super opal)
- _____ 242. Base to Stork in the Rushes Punch Set – Mari. (very scarce part)
- _____ 243. Fenton Garland Ftd. Rose Bowl – Dk. Mari. (super color)
- _____ 244. 6-1/2" Fenton Persian Medallion Flat Plate – Blue (scarce)
- _____ **245. 9" FENTON ORANGE TREE W/ TRUNK FLAT PLATE – AMYTH. (VERY RARE BASE COLOR; NICE AVERAGE IRID.)**
- _____ **246. 9" FENTON PEACOCK AND GRAPE FLAT PLATE – DK. MARI. (EXCELLENT COLOR AND IRID.; SUPER ITEM)**
- _____ 247. 9-1/4" Fenton Captive Rose Flat Plate – Blue (very scarce w/ a nice satiny irid.)

- _____ 248. 7-1/2" Fenton Horsehead Medallion Flat Plate – Mari. (very scarce w/ nice color and detail)
- _____ 249. **6-1/2" FENTON PINE CONE PLATE W/ PANELED EXT. – ELEC. BLUE (A SUPER ITEM W/ BRIGHT BLUE, GOLD AND RED IRID.)**
- _____ 250. **9-1/2" FENTON VINTAGE GRAPE LG. ICE CREAM BOWL – MARI. / VASELINE (VERY SCARCE ITEM IN THIS SIZE AND COLOR)**
- _____ 251. **9-3/4" FENTON TWO FLOWERS BALL FTD. 8 RUFFLED BOWL – MARI. / VASELINE (SCARCE W/ NICE COLOR AND FINISH)**
- _____ 252. 7-1/2" Fenton Acorn Low 8 Ruffled Bowl – Mari. / Vaseline (scarce w/ nice base color)
- _____ 253. Fenton Lotus and Poinsettia Ftd. 6 Ruffled Bowl – Mari. / Vaseline (scarce w/ nice color and irid.)
- _____ 254. Fenton Holly Stemmed 6 Ruffled Compote – Mari. / Vaseline (scarce w/ nice color)
- _____ 255. **FENTON ORANGE TREE 6 RUFFLED STEMMED COMPOTE – MARI. / VASELINE (UNUSUAL ITEM W/ A BRIGHT YELLOW BASE)**
- _____ 256. **FENTON ORANGE TREE HANDLED SHAVING MUG – MARI. / VASELINE (RARE COLOR IN THIS SIZE; REALLY TOUGH)**
- _____ 257. Fenton Orange Tree Handled Flared Standard Mug – Mari. / Vaseline (scarce w/ nice color and irid.)
- _____ 258. Fenton Stretch Ftd. Oblong Match Holder – Vaseline (very scarce w/ excellent color)
- _____ 259. Fenton Vintage Grape Small Size Single Lily Epergne – Amyth. (very scarce; really nice color and irid.)
- _____ 260. **FENTON PERSIAN MEDALLION LARGE STEMMED 6 RUFFLED CRIMPED EDGE COMPOTE – GREEN (RARE COLOR; PRETTY TOUGH ITEM; NICE)**
- _____ 261. Fenton Persian Medallion Small Sized 6 Ruffled Crimped Edge Compote – Mari. (very scarce w/ nice color and irid.)
- _____ 262. Fenton Captive Rose Stemmed 6 Ruffled Crimped Edge Compote – Blue (scarce w/ a great shape)
- _____ 263. Fenton Captive Rose Stemmed 6 Ruffled Compote – White (scarce w/ a nice irid.)
- _____ 264. **FENTON WINE AND ROSES STEMMED GOBLET – AQUA / MARI. (RARE COLOR FOR THIS ITEM)**
- _____ 265. **FENTON PEACOCK AT THE URN STEMMED 6 RUFFLED COMPOTE – AQUA / MARI. (VERY SCARCE AND VERY ATTRACTIVE; REALLY NICE)**
- _____ 266. Fenton Peacock at the Urn 6 Ruffled Stemmed Compote – Mari. / Vaseline (really nice base effect; very scarce)
- _____ 267. Fenton Peacock at the Urn 6 Ruffled Stemmed Compote – White (scarce w/ nice detail and irid.)
- _____ 268. Fenton Rose Spray Stemmed JIP Compote – White (scarce item)
- _____ 269. Fenton Iris Stemmed 6 Ruffled Compote – Mari.
- _____ 270. **FENTON IRIS 6 RUFFLED STEMMED COMPOTE – BLUE (RARE AND DESIRABLE ITEM IN THIS COLOR; VERY NICE EXAMPLE)**
- _____ 271. Fenton Iris Low 6 Ruffled Stemmed Compote – Green (nice flare; nice satiny finish)
- _____ 272. Fenton Iris Buttermilk Goblet – Green (scarce; nice color)
- _____ 273. Fenton Blackberry Spray 4 Sided Square Hat – Aqua / Mari.
- _____ 274. **5-1/2" FENTON LITTLE FLOWERS 6 RUFFLED SAUCE – AQUA / MARI. (VERY SCARCE COLOR FOR THIS ITEM; NICE)**
- _____ 275. **9-1/2" TALL FENTON FINE RIB STANDARD SWUNG VASE – RED (VERY ATTRACTIVE; LOOKS RED – REALLY NICE)**
- _____ 276. Fenton Two Row Open Edge JIP Hat – Red (very scarce; nice dark satiny finish)
- _____ 277. Fenton Two Row 6 Ruffled Hat – Red (very scarce; nice satiny finish)
- _____ 278. **FENTON STAG AND HOLLY FTD. GIANT ROSE BOWL – MARI. (VERY SCARCE; NICE DETAIL AND IRID.)**
- _____ 279. **FENTON HOLLY COLLAR BASED ROSE BOWL – MARI. (A VERY DIFFICULT ITEM TO LOCATE; NICE)**
- _____ 280. **6-1/2" FENTON VINTAGE GRAPE ROUND FLARED BOWL – AMYTH. OPAL (RARE COLOR FOR ANY FENTON ITEM; NICE)**
- _____ 281. 15-1/2" Tall Fenton Rustic Mid Size Swung Vase w/ TCE – White (scarce; nice and frosty; attractive)
- _____ 282. 15-1/2" Tall Fenton Rustic Mid Size Swung Vase – Green (attractive)
- _____ 283. 16-1/4" Tall Fenton Rustic Mid Size Swung Vase – Amyth. (nice color and irid.)
- _____ 284. 7" Tall Three Diamonds and Bows Swung Vase – Amyth. (rare base color w/ average irid.)
- _____ 285. **FENTON ROSE BOUQUET 2 HANDLED 4 SIDED BON BON – WHITE (RARE AND DESIRABLE PATTERN; HAS GREAT IRID. AND FROSTY TEXTURE)**
- _____ 286. Fenton Lotus and Grape 2 Handled 4 Sided Bon Bon – Green (scarce base color; sorta teal effect)
- _____ 287. Fenton Bird and Cherries 2 Handled 4 Sided Bon Bon – Green (scarce)
- _____ 288. Fenton Bird and Cherries 2 Sided 2 Handled Card Tray – Blue (scarce; nice)
- _____ 289. Fenton Bird and Cherries 2 Handled 4 Sided Bon Bon – Dk. Mari. (nice color and irid.)
- _____ 290. **FENTON TWO FRUITS ROUND DIVIDED BON BON – MARI. / VASELINE (VERY SCARCE BASE COLOR; ATTRACTIVE)**
- _____ 291. Fenton Two Fruits Round Divided Bon Bon – Blue (scarce color)
- _____ 292. Fenton Two Fruits Round Divided Bon Bon – Mari. (scarce)
- _____ 293. Fenton Two Fruits 4 Sided Divided Bon Bon – Mari. (scarce shape)
- _____ 294. Fenton Two Flowers 6 Ruffled Ball Ftd. Sauce – Green (scarce color in this pattern)
- _____ 295. Fenton Vintage Grape Tri Cornered Sauce – Amyth. (scarce shape)
- _____ 296. 15-1/2" Tall Fenton No. 319 (or 316) Large Swung Vase – Blue (scarce)
- _____ 297. 11" Tall Fenton Rustic Standard Swung Vase – White (nice irid.)
- _____ 298. 10" Tall Fenton Diamond Rib Swung Vase – Blue
- _____ 299. 10-3/4" Tall Fenton April Showers Swung Vase – Mari.
- _____ 300. **9" FENTON HOLLY 8 RUFFLED BOWL – RED (RARE AND DESIRABLE; HAS AN ORANGEISH TINT; NICE)**
- _____ 301. **9-1/2" FENTON HOLLY FLAT PLATE – BLACK AMYTH. (VERY RARE BASE COLOR W/ NICE SATINY FINISH)**
- _____ 302. **9-1/2" FENTON HOLLY FLAT PLATE – AMYTH. (RARE BASE COLOR W/ A NICE SATINY FINISH)**
- _____ 303. **9-1/2" FENTON HOLLY FLAT PLATE – GREEN (VERY RARE; VERY NICE BRIGHT FINISH; A GOODIE)**
- _____ 304. 9-3/4" Fenton Holly Flat Plate – Blue (scarce w/ nice color and irid.)
- _____ 305. 9-1/2" Fenton Holly Flat Plate – White (really super example; nice and frosty)
- _____ 306. 9-1/2" Fenton Holly Flat Plate – Clamb (scarce w/ nice irid.)
- _____ 307. 9-1/2" Fenton Holly Flat Plate – Mari. (nice average example)
- _____ 308. 8-1/2" Fenton Holly 8 Ruffled Bowl – Green (looks blue to see it; dark overlay)
- _____ 309. Fenton Blackberry Miniature Compote – Blue (scarce; nice detail; has manuf. flaw)
- _____ 310. **FENTON KITTENS 2 SIDED BANANA DISH – AMYTH. (RARE ITEM IN THIS COLOR; VERY TOUGH)**

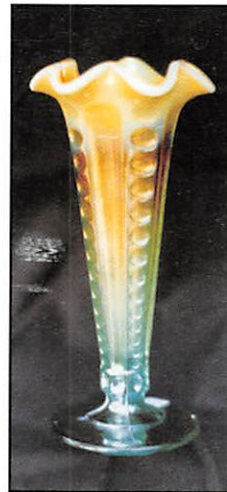
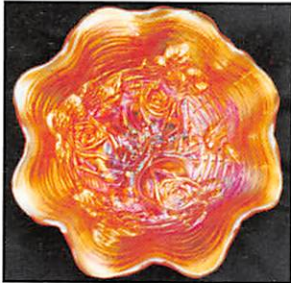
- _____ 311. **FENTON KITTENS 4 SIDED BOWL – AQUA / MARI.
(RARE AND DESIRABLE BASE COLOR; NEAT ITEM)**
- _____ 312. Fenton Kittens 4 Sided Bowl – Powder Blue / Mari. (rare color but cracked)
- _____ 313. **FENTON KITTENS ODD SHAPED TOOTHPICK HOLDER –
BLUE (AN ODD ITEM W/ 2 SETS OF KITTENS)**
- _____ 314. Fenton Kittens Odd Shaped Toothpick Holder – Dk. Mari.
(great color and irid.)
- _____ 315. Fenton Kittens Odd Shaped Toothpick Holder – Mari. (nice color and irid.)
- _____ 316. Fenton Kittens Cup and Saucer – Mari. (very scarce and desirable;
an attractive example)
- _____ 317. Fenton Kittens Saucer only – Mari. (very difficult to find if you're
looking for one)
- _____ 318. Fenton Kittens 2 Sided Banana Dish – Mari. (another attractive item
w/ nice detail)
- _____ 319. Fenton Kittens Round Cereal Bowl – Mari. (nice color; scarce)
- _____ 320. Fenton Kittens 6 Ruffled Bowl – Mari. (nice color; scarce)
- _____ 321. Fenton Kittens 4 Sided Bowl – Mari. (nice color; scarce)
- _____ 322. Fenton Peacock Tail 4 Sided Handled Bon Bon – Amyth. (satiny)
- _____ 323. Fenton Butterflies 4 Sided 2 Handled Bon Bon – Blue
- _____ 324. 7" Fenton Thistle and Thorn 6 Ruffled Bowl – Mari. (scarce pattern)
- _____ 325. **FENTON BLUEBERRY 7 PC. BULBOUS WATER SET –
BLUE (A RARE AND VERY DESIRABLE SET; SUPER)**
- _____ 326. Fenton Butterfly and Berry 7 Pc. Water Set – Mari. (nice color;
well matched)
- _____ 327. (4) Fenton Butterfly and Berry Tumblers – Blue (selling choice)
- _____ 328. **FENTON BUTTERFLY AND BERRY COVERED BUTTER
DISH – BLUE (PRETTY TOUGH ITEM TO COME ACROSS)**
- _____ 329. Fenton Butterfly and Berry 7 Pc. Ftd. Flared Berry Set – Blue (very
attractive set w/ bright finish)
- _____ 330. Fenton Butterfly and Berry Lg. Ftd. Ruffled Berry Bowl – Amyth.
(scarce; has nice color and irid.)
- _____ 331. Fenton Butterfly and Berry Ind. Ftd. Flared Berry Bowl – Green
(very scarce color w/ nice irid.)
- _____ 332. Fenton Panther 5 Pc. Ftd. Ruffled Berry Set – Mari. (scarce; nice
color and detail)
- _____ 333. Fenton Scale Band 7 Pc. Water Set – Mari. (scarce set)
- _____ 334. 8-1/2" Fenton Dragon and Lotus 8 Ruffled Bowl – Blue (nice detail)
- _____ 335. **11" FENTON CHERRY CHAIN CHOP PLATE – DK. MARI.
(ABSOLUTELY SUPER EXAMPLE W/ BRIGHT IRID.)**
- _____ 336. **12" FENTON STAG AND HOLLY BALL FTD. CHOP PLATE
– DK. MARI. (ANOTHER RARE AND DESIRABLE
FENTON PLATE)**
- _____ 337. 10" Fenton Stag and Holly Ball Ftd. 8 Ruffled Bowl – Blue (scarce
item w/ nice irid. and detail)
- _____ 338. 10" Fenton Stag and Holly Ball Ftd. I.C. Shaped Bowl – Dk. Mari.
(nice satiny finish)
- _____ 339. 7-1/2" Fenton Stag and Holly Spatula Ftd. I.C. Shaped Bowl – Mari.
(nice item)
- _____ 340. **FENTON PANELLED DANDELION 7 PC. TANKARD
WATER SET – AMYTH. (PROBABLY AS NICE A SET AS
WE'VE SOLD)**
- _____ 341. **FENTON PANELLED DANDELION 7 PC. TANKARD
WATER SET – BLUE (REALLY NICE EXAMPLE; HAS
TINY FLAKE ON LIP)**
- _____ 342. Fenton Panelled Dandelion 7 Pc. Tankard Water Set – Mari. (scarce
set to find complete; nice
- _____ 343. 8-3/4" Fenton Peacock at the Urn 8 Ruffled Bowl – Blue (scarce;
esp. when they look this nice)
- _____ 344. 8" Fenton Peacock at the Urn Ice Cream Shaped Bowl – Lt. Mari.
(light color and irid.)
- _____ 345. **11" FENTON TWO FLOWERS LG. BALL FTD. 8
RUFFLED BOWL – BLUE / ELEC. BLUE (VERY
SCARCE; A REALLY NICE BLUE FINISH)**
- _____ 346. **FENTON G & C / PERSIAN MEDALLION INT. SMALL
SIZE FTD. FRUIT BOWL – AMYTH. (SCARCE COLOR W/
NICE IRID. AND DETAIL)**
- _____ 347. **9-3/4" FENTON HONEYCOMB AND CLOVER LG. FLAT
ICE CREAM SHAPED BOWL – AMYTH. (VERY RARE
SHAPE FOR THIS PATTERN; FIRST I'VE SEEN)**
- _____ 348. 7-1/2" Fenton Peacock and Grape Deep Round Bowl – Blue
(scarce shape; nice)
- _____ 349. 9" Fenton Peacock and Grape 8 Ruffled Bowl – Blue (satiny finish)
- _____ 350. **FENTON ORANGE TREE 8 PC. RUFFLED TOP PUNCH
SET – WHITE (RARE AND DESIRABLE SET; FROSTY
AND NICE)**
- _____ 351. Fenton Orange Tree 8 Pc. Flared Top Punch Set – Mari. (well
matched set)
- _____ 352. **FENTON FOOTED ORANGE TREE 7 PC. WATER SET –
BLUE (RARE SET; FEET ARE PRETTY GOOD;
NICE COLOR)**
- _____ 353. 9" Fenton Concord Grape 6 Ruffled Bowl – Amyth. (scarce; has a
satiny finish)
- _____ 354. 8-3/4" Fenton Heart and Vine 6 Ruffled Bowl – Blue (satiny finish)
- _____ 355. **9" FENTON RIBBON TIE LOW 3 IN 1 EDGE PLATE OR
LOW BOWL – PURP. (EXTREMELY RARE BASE COLOR
W/ SUPER IRID.)**
- _____ 356. **FENTON ROSE WREATH / VINTAGE INT. 8 PC. PUNCH
SET – AMYTH. (SCARCE SET; HAS A SUBDUED
SATINY FINISH)**
- _____ 357. Fenton Rose Wreath / Vintage Handled Punch Cap. – Amyth.
- _____ 358. Stevens and Williams Single Epergne Lily in a Middletown Silver
Plate Stand – Mari. (a cutie; very attractive item)
- _____ 359. European Prisms Ftd. Flared Vase – Dk. Mari. (scarce; nice
dark color)
- _____ 360. **CZECH CASTLE SCENE HANGING 5 SHADE LIGHT –
MARI. (VERY DESIRABLE OUTFIT; ATTRACTIVE)**
- _____ 361. Jenkins Cut Flowers Lg. Cylinder Vase – Mari.
- _____ 362. **PHOENIX LACY DEWDROP STEMMED 2 SIDED
BANANA DISH – PEARLIZED MILK GLASS (RARER
THAN YOU THINK; A VERY UNDERPRICED ITEM)**
- _____ 363. Westmoreland Corinth JIP Vase – Amyth. (desirable shape)
- _____ 364. Westmoreland Wide Panel JIP Vase – Amyth. (scarce)
- _____ 365. **5-1/2" WESTMORELAND HOBSTAR FRUIT 6 RUFFLED
SAUCE – BLUE OPAL (SCARCE; NICE BASE COLOR
AND OPAL)**
- _____ 366. 5-1/2" Westmoreland Hobstar Fruit 6 Ruffled Sauce – Dk. P. Opal
- _____ 367. 5-1/2" Westmoreland Hobstar Fruit 6 Ruffled Sauce – Mari.
- _____ 368. Westmoreland Hobstar Fruit 2 Sided Banana Dish – Mari. (scarce
shape; desirable)
- _____ 369. Westmoreland Estate Handled Mug – Mari. (scarce)
- _____ 370. Westmoreland Bo Peep Handled Mug – Mari. (very scarce)
- _____ 371. (Maker?) Plain Patterned Miniature Handled Flower Basket –
Souvenir, Sparta, Wis. – Dk. Mari. (another cute item; very
attractive)
- _____ 372. Set of Black Beads – Dark

FOR THE RESULTS OF THIS OR ANY BURNS AUCTION SERVICE AUCTION
SEND A S.A.S.E. AND \$3.00 (INCLUDE NAME OR DATE OF AUCTION) TO:

EMMA TILTON
P.O. BOX 273 • GNADENHUTTEN, OH 44629

VISIT US ON THE WEB!

<http://www.woodsland.com/burnsauction>
for pictures, complete listings and upcoming auctions



BURNS

AUCTION SERVICE

P.O. BOX 608 • BATH, NEW YORK 14810

Great Lakes Carnival Glass Club Glass Bash Auction

Friday & Saturday

August 20 & 21, 1999

Friday: Preview at 5:00 P.M., Auction at 7:00 P.M.

Lots 1-150

Saturday: Preview at 8:00 A.M., Auction at 10:00 A.M.

Lots 151-End

at the

Sheraton Hotel - Lansing

925 S. Creyts Road

Lansing, Michigan 48917

(517) 323-7100

(Exit Creyts Road off I-496 - located on northeast corner)

First Class Mail
U.S. Postage
PAID
Eugene, Oregon
Permit No. 305

