

BURNS

AUCTION SERVICE

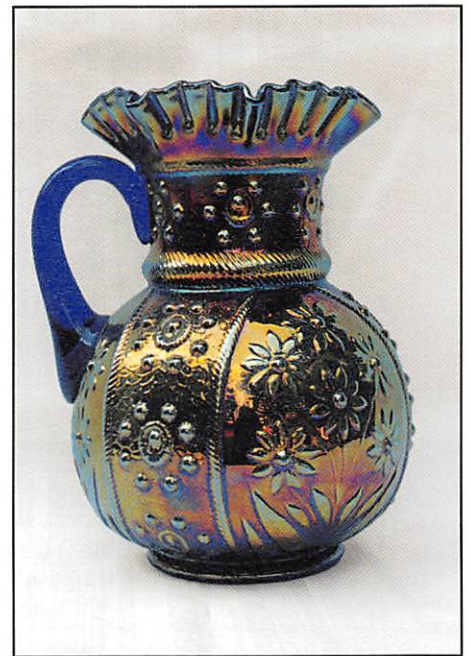
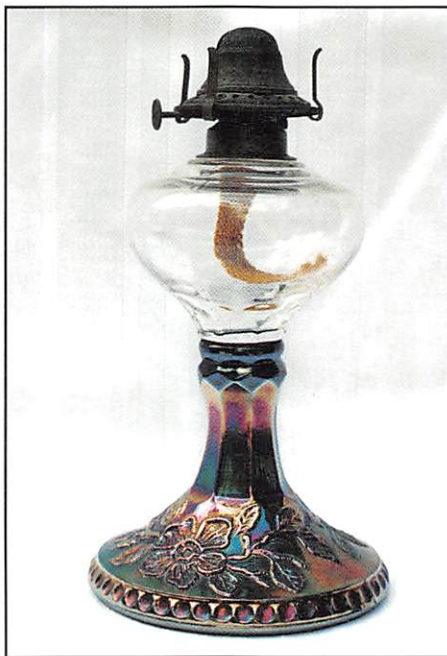
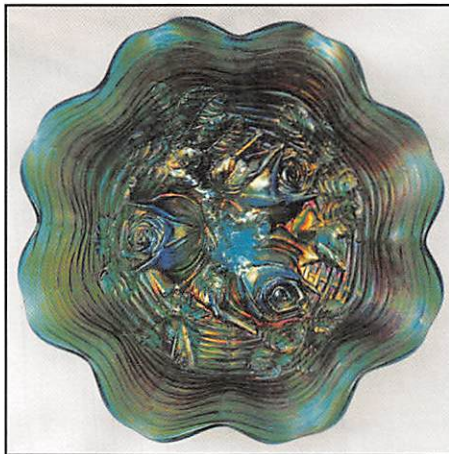
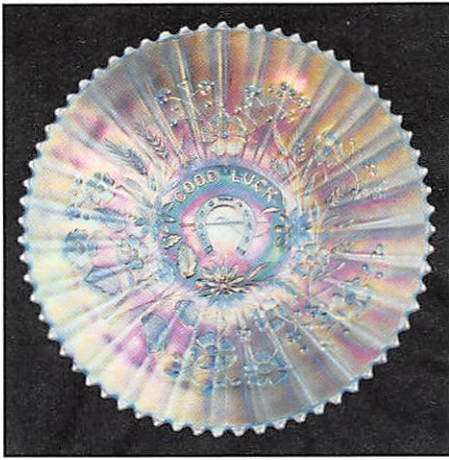
Pacific Northwest Carnival Glass Convention Auction

Saturday, August 14, 1999
Auction 9:30 A.M.

Preview 7:00 A.M.

at

The Greenwood Inn
10700 S.W. Allen Boulevard
Beaverton, Oregon 97005
(503) 643-7444 or (800) 289-1300
Fax (503) 626-4553



Thank goodness I love to travel the country... (this will be the third of four trips I'm taking to the Pacific Northwest this year).

It's our turn to provide the glass for this year's Pacific Northwest Carnival Glass Convention Auction. The majority of this year's glass is from Michigan, Ohio and Illinois, making for what we hope is a great selection to choose from. It will be great to see everyone again, hope to see ya there.

The Greenwood Inn of Beaverton, Oregon will host the event. The convention runs from Wednesday, August 11 through Saturday, August 14. For further information call the Greenwood Inn direct at (503) 643-7444 or (800) 289-1300, or call Larry Olson at (503) 234-6705.

Mail bids, e-mail bids, phone bids, etc. are due by Wednesday, August 11, 1999.

CHECK OUT BURNS AUCTION SERVICE ON THE WEB!

Visit our new Web site for information on upcoming auctions, complete auction listings and photos of auction highlights. You can e-mail your bids or requests for information.

<http://zeus.kspress.com/woodsland/burnsauction> e-mail: brnzauctsv@aol.com

BURNS AUCTION SERVICE

Tom Burns
P.O. Box 608
Bath, New York 14810
(607) 776-7942

Bill Richards
44 Water St., Poland, OH 44514
(330) 757-2001
FAX (330)-757-4917

Bill Richards, III
2253 Country Lane
Poland, OH 44514
(330) 755-2620

Mail Bids honored under the following conditions.

1. No deposit required, Bidders will take full responsibility to honor any and all bids we execute for them. Payment in full plus postage and handling required after notification and before we ship any item to them.
2. Items are bid on in perfect condition with average or above average iridescence OR as listed in the brochures. Bids will not be carried out when damage on an item has been found during the auction. **PEOPLE PRESENT AT AUCTION ARE RESPONSIBLE FOR FINDING ANY PINHEADS, WEAR, SPOTTINESS, MANUFACTURER'S DEFECTS OR ANY OTHER MINOR FLAWS, ETC.**
3. Successful bidders will be notified by collect call from the auctioneer (**so be sure to include the phone number**).
4. Phone inquiries about the glass or any other questions are welcome.
5. If you have some other person at the auction bidding for you, they must pay for the item before taking it.
6. Any terms or conditions given the day of the auction will supersede any previously published information.
7. Mail, e-mail, fax and phone bids are due by Wednesday, August 11, 1999.

- | | |
|--|--|
| ____ 1. Depression Era Mellon Rib Salt Shaker – Cranb. Flash | ____ 12. N FRUIT AND FLOWERS 2 HANDED STEMMED BON BON – ICE BLUE (RARE AND DESIRABLE; IRID. IS SILVERY) |
| ____ 2. Set of (6) Depression Era Stemmed Cordials w/ Applied Decoration – Assorted Flash Colors (selling so much each for set) | ____ 13. CAMBRIDGE INVERTED STRAWBERRY COVERED POWDER JAR – GREEN (SCARCE ITEM; GREAT COLOR W/ MINOR RIM ROUGHNESS) |
| ____ 3. Fenton Stretch Era Plain Swung Bud Vase – Mari. | ____ 13A. CAMBRIDGE COLOGNE BOTTLE W/ ORIGINAL STOPPER – GREEN (RARE AND DESIRABLE W/ EXCELLENT IRID.) |
| ____ 4. Fenton Stretch Era Oblong Match Holder – Mari. (scarce item) | ____ 14. Diamond Bell Shaped Lustre and Clear Candlestick – Red (scarce item, esp. if you need it) |
| ____ 4A. U.S. Glass Stretch Candle Centerpiece, Signed Pat. App. For – Celeste Blue (scarce w/ nice color and irid.) | ____ 15. FENTON DRAGON AND LOTUS ICE CREAM SHAPED BOWL – RED W/ AMBERINA CENTER (RARE AND DESIRABLE; HAS SATINY FINISH) |
| ____ 5. N PEACOCKS RUFFLED BOWL W/ RIBBED EXT. – ICE GREEN (RARE AND VERY DESIRABLE; GOLD HIGHLIGHTS W/ A NICE PEARL LUSTRE) | ____ 16. 7-1/2" FENTON ACORN LOW RUFFLED BOWL – AMBER OPAL. (RARE BASE COLOR W/ OPAL. ON THE EDGE) |
| ____ 6. N PEACOCKS RUFFLED BOWL W/ RIBBED EXT.– WHITE (ANOTHER RARE AND DESIRABLE ITEM W/ EXCELLENT IRID. – REALLY NICE) | ____ 17. 11-1/2" Fenton Diamond Rib Swung Vase – Green (actually quite an attractive example) |
| ____ 7. N ACORN BURRS COVERED BUTTER DISH – PURP. (VERY SCARCE; HAS NICE MULTI-COLORED IRID.) | ____ 18. Fenton Captive Rose Stemmed Ruffled Crimped Edge Compote – White (very scarce; neat shape w/ nice irid.) |
| ____ 8. N Acorn Burrs Covered Sugar Bowl – Purp. (very scarce; nice irid.; lid a bit silvery) | ____ 19. Fenton Holly Stemmed 6 Ruffled Compote – Amyth. (scarce base color w/ a satiny finish) |
| ____ 9. N Acorn Burrs Handled Creamer – Purp. (very scarce; has nice multi-colored irid.) | |
| ____ 10. N MEMPHIS 8 PC. RUFFLED FRUIT BOWL SET – ICE BLUE (VERY RARE AND DESIRABLE; SUPER COLOR AND IRID.; HAS MANUF. STONE IN TOP) | |
| ____ 11. N Memphis One Handled Advertising Nappy - L.H. Cahn Furniture – Crystal (scarce item) | |

- _____ 20. **FENTON WINE AND ROSES STEMMED GOBLET – DK. AQUA/ MARI. (VERY SCARCE AND ATTRACTIVE COLOR; NICE)**
- _____ 21. Fenton Orange Tree Standard Flared Handled Mug – Mari./ Vaseline (scarce base color; looks yellow)
- _____ 22. U.S. Glass Wide Panel or Flute 7 Pc. Water Set – Cranberry Flash (rare set to find complete; tumblers are scarce)
- _____ 22A. **MAKER (?) BROCAIDED POPPY LG. SIZE STEMMED COMPOTE – PINK (RARE AND DESIRABLE; UNUSUAL PATTERN)**
- _____ 23. (2) Maker (?) Moonprint Stemmed Goblets – Mari. (rare and unusual items; selling choice)
- _____ 24. Maker (?) Pair Bell Shaped Candlesticks w/ Geometric Cut Design – Clear/ Mari. (never seen this pattern before; unusual)
- _____ 25. **PAIR IMPERIAL CRACKLE OR TREE OF LIFE SALT AND PEPPER SHAKERS – MARI./ AQUA. (VERY RARE PAIR; NICE BASE COLOR; TOUGH TO FIND)**
- _____ 26. 7" Tall x 7-3/4" Wide Imperial Interior Wide Panel Squatty Flared Funeral Vase – Mari. (scarce item; signed w/ Iron Cross; nice)
- _____ 27. Imperial Grape Punch Base Only – Dk. Mari. (nice part w/ nice color)
- _____ 28. Westmoreland Miniature Handled Flower Basket Salt Dip – Lt. Mari. (scarce miniature)
- _____ 29. Maker (?) "Sprocket" Ftd. Salt Dip – Lt. Mari. (very scarce item - unusual)
- _____ 30. **DUGAN HEAVY WEB DEEP FLARED BOWL – P. OPAL. (VERY RARE PATTERN; NICE SATINY FINISH; REALLY TOUGH!)**
- _____ 31. **DUGAN DAHLIA 4 PC. TABLE SET – DK. MARI. (RARE AND VERY DESIRABLE SET; GREAT COLOR AND NICE)**
- _____ 32. Dugan Beaded Shell Ftd. Round Master Berry Bowl – Mari. (scarce w/ nice color)
- _____ 33. (2) Dugan Beaded Shell Ftd. Ind. Round Berry Bowls – Mari. (selling so much each)
- _____ 34. 9-1/2" Tall Dugan Pulled Loop Swung Vase – Mari.
- _____ 35. **9" DUGAN FANCIFUL FLARED PLATE – WHITE (SCARCE; NICE COLOR AND IRID.)**
- _____ 36. 7-1/2" Dugan Fishscale Flared Plate w/ Tight Crimped Edge – Purp. (super color and irid.; nice)
- _____ 37. 9-1/2" Dugan Cosmos Variant 6 Ruffled Bowl – Amyth. (scarce color)
- _____ 38. Dugan Interior Paneled 6 Ruffled Hat Shape – Purp. (super irid.)
- _____ 39. **DUGAN NAUTILUS NOVELTY OPEN SUGAR – P. OPAL. (VERY SCARCE; PERFECT W/ NICE OPAL.)**
- _____ 40. **FENTON KITTENS CEREAL BOWL – CRYSTAL LIGHT BLUE (EXTREMELY RARE ITEM TO FIND; ONLY SEEN A COUPLE IN THIS COLOR)**
- _____ 41. **FENTON KITTENS 4 SIDED BOWL W/ 2 SETS OF KITTENS – BLUE (RARE AND DESIRABLE; QUITE RARE)**
- _____ 42. Fenton Kittens 6 Ruffled Bowl – Blue (rare; but has chip on edge)
- _____ 43. **FENTON KITTENS ODD 5 RUFFLED TOOTHPICK HOLDER – DK. MARI. (RARE SHAPE; NICE COLOR; HAS 2 SETS OF KITTENS)**
- _____ 44. Fenton Kittens 4 Ruffled Toothpick Holder – Mari. (scarce; nice color and irid.)
- _____ 45. **FENTON KITTENS CUP AND SAUCER – DK. MARI. (RARE SET; NICE DARK SATINY FINISH)**
- _____ 46. Fenton Kittens Handled Cup – Mari. (scarce item; nice detail)
- _____ 47. (2) Fenton Kittens 2 Sided Banana Dishes – Mari. (selling choice; nice color and irid.)
- _____ 48. Fenton Kittens 6 Ruffled Bowl – Mari. (scarce item w/ nice irid.)
- _____ 49. Fenton Interior Coin Dot Tumbler – Mari.
- _____ 50. **FENTON BOUQUET HANDLED BULBOUS WATER PITCHER – BLUE (RARE AND VERY DESIRABLE; GREAT COLOR)**
- _____ 51. **9-1/4" FENTON PEACOCK AT THE URN FLAT PLATE – WHITE (RARE AND DESIRABLE; REALLY NICE IRID.)**
- _____ 52. 8-3/4" Fenton Peacock at the Urn 6 Ruffled Bowl – White (scarce w/ nice irid. and is frosty)
- _____ 53. 8-3/4" Fenton Peacock at the Urn 8 Ruffled Bowl – Blue (has nice multi-colored irid.)
- _____ 54. 8-3/4" Fenton Peacock at the Urn 8 Ruffled Bowl – Dk. Mari. (very attractive; has great multi-colored irid.)
- _____ 55. **8-3/4" FENTON PEACOCK AT THE URN 8 RUFFLED BOWL W/ 3 IN 1 EDGE – AMYTH. (VERY SCARCE COLOR IN A VERY SCARCE SHAPE; NICE)**
- _____ 56. Pr. 13" Fenton April Showers Swung Vases – Blue (nice color; selling so much each for pair)
- _____ 57. 10" Fenton Long Thumbprint Swung Vase – Amyth.
- _____ 58. 6" Fenton Persian Medallion 6 Ruffled Sauce – Blue (satiny)
- _____ 59. 7-1/2" Fenton Leaf Chain 6 Ruffled Bowl – Blue (goldish irid.)
- _____ 60. **9" FENTON TEN MUMS ROUND BOWL W/ TIGHT CRIMPED EDGE – GREEN (VERY SCARCE; HAS SUPER COLOR AND IRID.; GREAT REDS AND BLUES)**
- _____ 61. 9" Fenton Peacock and Grape 8 Ruffled Bowl – Blue (nice satiny finish)
- _____ 62. 8-1/2" Fenton Peacock and Grape I.C. Shaped Bowl – Mari. (nice color and irid.)
- _____ 63. 8-1/4–8-1/2" Fenton Captive Rose 8 Ruffled Bowl w/ 3 in 1 Edge – Blue (really nice example in a desirable shape)
- _____ 64. Fenton Mikado Large Stemmed Ice Cream Shaped Compote – Mari. (very scarce; nice shape; attractive)
- _____ 65. **6-1/2" FENTON LITTLE FLOWERS FLAT PLATE – MARI. (VERY SCARCE; NICE SATINY FINISH)**
- _____ 66. 6-1/2" Fenton Little Flowers Tri-Cornered Bowl – Mari. (scarce shape for this pattern; satiny)
- _____ 67. 6" Fenton Little Flowers Deep Round Ind. Berry Bowl – Blue (really nice color and irid.)
- _____ 68. Fenton Wild Blackberry Stemmed Deep 6 Ruffled Compote – Blue (nice color)
- _____ 69. Fenton Wild Blackberry Stemmed Flared 6 Ruffled Compote – Green

- ____ 70. 8-1/2-9" Fenton Stag and Holly Deep Ball Ftd. 8 Ruffled Bowl – Dk. Mari. (attractive irid. w/ great detail)
- ____ 71. Fenton Panther Irid. Ftd. Ruffled Berry Bowl – Mari.
- ____ 72. N G&C 5 Pc. Water Set – Dk. Mari. (super color and irid.; well matched)
- ____ 73. N G&C w/ Thumbprint 5 Pc. Berry Set – Dk. Mari. (super color and irid.)
- ____ 74. N G&C Bowl w/ PCE and Basketweave Ext. – Green (satiny; has a sharp point)
- ____ 75. **N G&C FTD. HATPIN HOLDER – PURP. (VERY SCARCE AND DESIRABLE; NICE MULTI-COLORED IRID.)**
- ____ 75A. N G&C Covered Sweetmeat Compote – Purp. (scarce w/ nice color and irid.)
- ____ 76. 9" N G&C Variant 8 Ruffled Bowl w/ Plain Ext. – Amyth. (super color and irid.; very attractive)
- ____ 77. N Acorn Burr Ind. Round Berry Bowl – Purp.
- ____ 78. 5-1/2"-6" N Fruit and Flowers 6 Ruffled Ind. Berry Bowl w/ Basketweave Ext. – Amyth.
- ____ 79. N Three Fruits Stippled Ruffled Bowl w/ Ribbed Ext. – Mari. (scarce; nice average color)
- ____ 79A. **N THREE FRUITS MEDALLION STIPPLED FTD. RUFFLED BOWL W/ MESUDER EXT. – AQUA OPAL. (SUPER PASTEL EXAMPLE; GREAT OPAL. AND NICE)**
- ____ 80. **N HEARTS AND FLOWERS BOWL W/ PIE CRUST EDGE AND RIBBED EXT. – WHITE (VERY RARE AND VERY DESIRABLE; NICE IRID.)**
- ____ 80A. **N HEARTS AND FLOWERS STEMMED RUFFLED COMPOTE RIBBED EXT. – ICE BLUE OPAL. (RARE; DESIRABLE AND HAS GREAT BASE COLOR AND OPAL.)**
- ____ 81. **N PEACOCKS BOWL W/ PIE CRUST EDGE AND RIBBED EXT. – DK. MARI. (SUPER EXAMPLE; VERY ATTRACTIVE)**
- ____ 82. N Strawberry Bowl w/ Pie Crust Edge and Basketweave Ext. – Purp. (super example w/ bright irid.)
- ____ 83. N Fine Cut and Roses Ftd. Rose Bowl – Purp. (has perfect feet; really nice)
- ____ 84. N Round Handled Bushel Basket – Blue (scarce w/ multi-colored irid.)
- ____ 85. **N POPPY SHOW 8 RUFFLED BOWL – DK. MARI. (A REAL BEAUT! NICE COLOR AND IRID.)**
- ____ 86. **N EMBROIDERED MUMS 8 RUFFLED BOWL W/ RIBBED EXT. – MARI. (RARE AND DESIRABLE W/ BRIGHT IRID.)**
- ____ 87. **N GOOD LUCK STIPPLED 8 RUFFLED BOWL W/ RIBBED EXT. AND NARROW BASE – BLUE (RARE ITEM W/ A SATINY IRID.)**
- ____ 88. N Good Luck 8 Ruffled Bowl w/ Ribbed Ext. – Aqua Opal. (rare and desirable; chipped on edge)
- ____ 89. **N CORN VASE W/ HUSK BASE – LIME ICE GREEN (RARE AND DESIRABLE W/ A MARIGOLD OVERLAY)**
- ____ 90. **N ROSE SHOW 8 RUFFLED BOWL – SAPPHIRE (EXTREMELY RARE AND VERY DESIRABLE; GREAT COLOR AND IRID.)**
- ____ 91. **9" N G&C STIPPLED BOWL W/ PIE CRUST EDGE AND RIBBED EXT. – ICE BLUE (RARE AND VERY DESIRABLE; NICE IRID.)**
- ____ 92. **N LEAF AND BEADS FTD. ROSE BOWL – AQUA OPAL. (ABSOLUTELY SUPER PASTEL EXAMPLE; WOW!)**
- ____ 93. **N POPPY RUFFLED OBLONG RELISH TRAY W/ RIBBED EXT. – AQUA OPAL. (RARE AND VERY DESIRABLE; OPAL. ON EDGE; TOUGH!)**
- ____ 94. **9" N HEART AND FLOWERS PLATE W/ RIBBED EXT. – PURP. (ANOTHER RARE N'WOOD ITEM; NICE!)**
- ____ 95. **N ORIENTAL POPPY 7 PC. TANKARD WATER SET – PURP. (RARE AND BEAUTIFUL SET; SUPER IRID.)**
- ____ 96. Frame w/ over 75 buttons – Dark (a different lot; all sorts of 'em)
- ____ 97. (2) Hatpins – Dark (selling choice)
- ____ 98. Imperial Flute Toothpick Holder – Dk. Mari. (super color)
- ____ 99. Imperial Grape Cup and Saucer – Mari. (scarce set)
- ____ 100. **IMPERIAL CHRYSANTHEMUM CHOP PLATE – SMOKE W/ STRETCH EFFECT (EXTREMELY RARE ITEM; GREAT STRETCH EFFECT)**
- ____ 101. **9" IMPERIAL OPEN ROSE FLAT PLATE – PURP. (RARE AND VERY DESIRABLE; PERFECT W/ SUPER IRID.)**
- ____ 102. Imperial Diamond Lace Ind. Ruffled Berry Bowl – Purp. (super irid.)
- ____ 103. **IMPERIAL CORN BOTTLE – DK. MARI. (VERY SCARCE AND VERY DESIRABLE; A SUPER ITEM)**
- ____ 104. Imperial Broken Arches 8 Pc. Ruffled Punch Set – Dk. Mari. (scarce set w/ ruffle; nice)
- ____ 105. **IMPERIAL WINDMILL HANDLED MILK PITCHER – SMOKE (RARE AND DESIRABLE BASE COLOR W/ NICE IRID.)**
- ____ 106. Imperial Star Medallion Handled Milk Pitcher – Smoke (scarce color)
- ____ 107. Imperial Soda Gold Handled Water Pitcher – Smoke (very scarce item w/ nice irid.)
- ____ 108. 6-1/2-7" Tall Imperial Ripple Swung Miniature Vase – Green (cute size; nice)
- ____ 109. 10" Tall Imperial Ripple Swung Vase – Mari.
- ____ 110. **8-1/2" TALL X 5-1/2" BASE M'BURG WILD ROSE KEROSENE LAMP – AMYTH. (RARE AND EXTREMELY DESIRABLE; SUPER ITEM; HAS FLAT FLAKE UNDER BASE RIM)**
- ____ 111. **9" M'BURG BIG FISH 6 RUFFLED BOWL – AMYTH. (RARE AND VERY DESIRABLE; RADIUM AND NICE)**
- ____ 112. M'burg Multi Fruits and Flowers Punch Top only – Amyth. (satiny; has a chip on the base)
- ____ 113. **M'BURG DIAMOND HANDLED WATER PITCHER – GREEN (SCARCE W/ NICE SATINY IRID.)**
- ____ 114. 8-1/2" M'burg Blackberry Wreath 6 Ruffled Bowl – Green (attractive satiny finish)
- ____ 115. **9" M'BURG PEACOCK AT THE URN "MYSTERY" 6 RUFFLED BOWL – GREEN (NICE EXAMPLE W/ A SATINY FINISH)**

- ____ 116. Newer Fenton Figural Rabbit – Dark
- ____ 117. Newer Fenton Figural Owl – Dark
- ____ 118. Newer Fenton Figural Tall Necked Cat – Dark
- ____ 119. Newer Fenton Chessie Cat Covered Candy Jar – Dark
- ____ 120. **FENTON ORANGE TREE HANDLED LOVING CUP – BLUE (RARE AND DESIRABLE; SUPER BRIGHT IRID. AND PERFECT)**
- ____ 121. **9" FENTON LEAF CHAIN FLAT PLATE W/ BERRY EXT. – BLUE (AN ITEM GETTING BETTER EACH AUCTION; NICE)**
- ____ 122. **8-1/2" FENTON BIRMINGHAM AGE HERALD 6 RUFFLED BOWL – AMYTH. (RARE ADVERTISING ITEM NOT OFTEN OFFERED; NICE)**
- ____ 123. **6–6-1/2" FENTON LOTUS AND POINSETTIA FTD. 6 RUFFLED SAUCE – LIME GREEN OPAL. (RARE AND EXTREMELY DESIRABLE; SUPER BASE GLASS AND OPAL.; SUPER!)**
- ____ 124. 5" Fenton Lotus and Poinsettia Ftd. 6 Ruffled Sauce – Green (scarce base color)
- ____ 125. **10–10-1/2" M'BURG PEACOCK LG. ICE CREAM BOWL – GREEN (RADIUM AND RARE; HAS NO BEE AND NO BEADING)**
- ____ 126. **10–11" IMPERIAL STRETCH INTERIOR WIDE PANEL SWUNG VASE – RED (SUPER COLOR AND QUITE ATTRACTIVE)**
- ____ 127. 9" Imperial Hattie 8 Ruffled Bowl – Purp. (super, super color and irid.; nice!)
- ____ 128. **7" DUGAN FISHSCALE AND BEADS FLAT PLATE – PURP. (RARE AND VERY DESIRABLE WHEN THEY LOOK LIKE THIS)**
- ____ 129. **N SINGING BIRD HANDLED MUG – ICE BLUE (RARE N'WOOD ITEM; IRID. A BIT SUBDUED)**
- ____ 130. **N DAISY AND DRAPE FTD. FLARED VASE – BLUE (RARE AND DESIRABLE; NICE MULTI-COLORED IRID.)**
- ____ 131. **N PEACOCK AT THE FOUNTAIN 8 PC. PUNCH SET – PURP. (RARE SET TO FIND COMPLETE ANYMORE; SATINY FINISH)**
- ____ 132. **N HEARTS AND FLOWERS RUFFLED BOWL W/ RIBBED EXT. – PURP. (VERY SCARCE W/ MULTI-COLORED IRID.)**
- ____ 133. **N HEARTS AND FLOWERS RUFFLED BOWL W/ RIBBED EXT. – ICE BLUE (SCARCE W/ NICE AVERAGE COLOR AND IRID.)**
- ____ 134. N Hearts and Flowers Ruffled Bowl w/ Ribbed Ext. – White (scarce; frosty w/ nice irid.)
- ____ 135. **N GOOD LUCK PLATE W/ RIBBED EXT. – ICE BLUE (EXTREMELY RARE EVEN THOUGH THIS EXAMPLE HAS A BUFFED SPOT ON COLLAR BASE WHERE IT WAS REPAIRED)**
- ____ 136. **N GOOD LUCK RUFFLED BOWL W/ RIBBED EXT. – AQUA (RARE BASE COLOR W/ A SATINY MARIGOLD OVERLAY; VERY DIFFICULT EXAMPLE TO FIND)**
- ____ 137. **N GOOD LUCK BOWL W/ PIE CRUST EDGE AND RIBBED EXT. – ELEC. BLUE (SUPER COLOR AND IRID.; VERY ATTRACTIVE)**
- ____ 137A. **N GOOD LUCK RUFFLED BOWL W/ RIBBED EXT. – ELEC. BLUE (SUPER EXAMPLE W/ GREAT COLOR)**
- ____ 138. **N GOOD LUCK BOWL W/ PIE CRUST EDGE AND BASKETWEAVE EXT. – GREEN (A BEAUT! MORE EMERALD GREEN; NICE!)**
- ____ 139. N Good Luck Bowl w/ Pie Crust Edge and Ribbed Ext. – Mari. (very attractive irid.; nice example)
- ____ 140. **N THREE FRUITS STIPPLED PLATE W/ RIBBED EXT. – AQUA/TEAL (RARE BASE COLOR; NICE SATINY FINISH)**
- ____ 141. **N THREE FRUITS STIPPLED PLATE W/ RIBBED EXT. – ELEC. BLUE (RARE AND DESIRABLE; NICE COLOR AND IRID.)**
- ____ 142. **N THREE FRUITS STIPPLED PLATE W/ RIBBED EXT. – PURP. (VERY SCARCE ITEM; NICE SATINY IRID.)**
- ____ 143. N Three Fruits Stippled Plate w/ Ribbed Ext. – Mari. (scarce and desirable; nice color and irid.)
- ____ 144. 7-1/2" N Fruits and Flowers 6 Ruffled Bowl w/ Basketweave Ext. – Blue (rare color; tough to find)
- ____ 145. **9" N THREE FRUITS DOMED FTD. RUFFLED BOWL W/ BASKETWEAVE EXT. – ICE GREEN (RARE ITEM TO FIND IN THIS COLOR; GOLDISH)**
- ____ 146. N Wishbone Ftd. Ruffled Bowl w/ Ruffles and Rings Ext. – Ice Blue (rare and attractive item; sm. chip on edge)
- ____ 147. 5-1/2" N Leaf Columns Squatty Flared Vase – Purp. (great size and shape w/ nice irid.)
- ____ 148. 13-1/2" Tall N Tree Trunk Mid Size Swung Vase w/ Plunger Base – Purp. (very scarce variation w/ nice satiny finish)
- ____ 148A. N Tree Trunk Mid Size Swung Vase – Green (scarce and very desirable; great color)
- ____ 149. 11" Tall N Tree Trunk Standard Swung Vase – Purp. (satiny finish)
- ____ 149A. **N TREE TRUNK STANDARD SWUNG VASE – AQUA. OPAL. (VERY RARE AND DESIRABLE; SUPER OPAL. AND COLOR)**
- ____ 150. **N LATTICE AND POINSETTIA FTD. RUFFLED BOWL W/ RIBBED EXT. – PURP. (RARE AND DESIRABLE PATTERN; NICE SATINY FINISH)**
- ____ 151. **N DRAPERY ROSE BOWL – AQUA OPAL. (ALWAYS A DESIRABLE ITEM; NICE PASTEL EXAMPLE)**
- ____ 151A. **N DRAPERY RUFFLED ROSE BOWL – AQUA OPAL. (RARE; HAS NICE BUTTERSCOTCH OVERLAY)**
- ____ 152. **9" N PEACOCKS STIPPLED PLATE W/ RIBBED EXT. – BLUE (RARE AND DESIRABLE EXAMPLE W/ GOLD HIGHLIGHTS)**
- ____ 153. **9" N PEACOCKS STIPPLED PLATE W/ RIBBED EXT. – PASTEL MARI. (A SUPER, SUPER ITEM W/ BRIGHT IRID.; NICE!)**
- ____ 154. N Thin Rib Mid Size Swung Vase – Coral Slag (not carnival but still a tough item)

- _____ 155. **N THIN RIB MID SIZE SWUNG VASE – SAPPHIRE (RARE AND VERY DESIRABLE COLOR FOR THIS ITEM)**
- _____ 156. **N THIN RIB MID SIZE SWUNG VASE – BLUE (REALLY TOUGH BASE COLOR FOR THIS ITEM; NICE!)**
- _____ 157. N Thin Rib Mid Size Swung Vase – Mari. (scarce item to find; nice irid.)
- _____ 158. **PAIR N COLONIAL BLOCK LG. SQUARE CANDLESTICKS – RUSSET GREEN (QUITE A RARE PAIR; HAS EXTRA LARGE SIZE)**
- _____ 159. Pair N Colonial Block Lg. Square Candlesticks – Celeste Blue (another rare pair like above; nice!)
- _____ 160. **N EMBROIDERED MUMS RUFFLED BOWL W/ RIBBED EXT. – ICE BLUE (RARE AND DESIRABLE PATTERN W/ NICE IRID.)**
- _____ 161. **N EMBROIDERED MUMS RUFFLED BOWL W/ RIBBED EXT. – BLUE (VERY SCARCE ITEM W/ NICE BLUE HIGHLIGHTS)**
- _____ 162. **N EMBROIDERED MUMS RUFFLED BOWL W/ RIBBED EXT. – PURP. (VERY SCARCE; NICE MULTI-COLORED IRID.)**
- _____ 163. **N EMBROIDERED MUMS RUFFLED BOWL W/ RIBBED EXT. – MARI. (ANOTHER REALLY NICE EXAMPLE; GREAT ITEM!)**
- _____ 164. **N PEACOCK AT THE URN LG. ICE CREAM BOWL – ELEC. BLUE (RARE AND DESIRABLE; GREAT COLOR AND IRID.)**
- _____ 165. **N PEACOCK AT THE URN LG. ICE CREAM BOWL – ICE BLUE (RARE ITEM; NICE IRID.; VERY DESIRABLE)**
- _____ 166. **N PEACOCK AT THE URN LG. ICE CREAM BOWL – AMYTH. (VERY SCARCE AND DESIRABLE; HAS MULTI-COLORED RADIUM TYPE FINISH)**
- _____ 167. **N PEACOCK AT THE URN LG. ICE CREAM BOWL – PASTEL MARI. (RARE; NICE ITEM W/ SUPER IRID.)**
- _____ 168. N Peacock at the Urn Ind. Ice Cream Bowl – Elec. Blue (excellent irid.; very scarce)
- _____ 169. N Peacock at the Urn Ind. Ice Cream Bowl – Ice Blue (very scarce; nice average irid.)
- _____ 170. N Peacock at the Urn Ind. Ice Cream Bowl – Amyth. (scarce; nice color and irid.)
- _____ 171. N Peacock at the Urn Ind. Ice Cream Bowl – Mari. (nice color and irid.)
- _____ 171A. N Peacock at the Urn Ind. Low Flared Bowl or Plate – Mari. (sorta on the edge of shape)
- _____ 172. 10-3/4" Fenton Rustic Standard Swung Vase – White (very scarce; nice irid.)
- _____ 173. 12-1/2" Fenton Fine Rib Swung Vase – Lime Green (scarce base glass color; nice)
- _____ 174. 10-1/2" Fenton Fine Rib Swung Vase – Aqua (another scarce base color; nice)
- _____ 175. **FENTON ILLINOIS SOLDIERS AND SAILORS FLAT PLATE – BLUE (VERY RARE AND VERY DESIRABLE ITEM; NICE)**
- _____ 176. **FENTON 1911 BPOE ATLANTIC CITY ELKS PLATE – BLUE (RARE AND VERY DESIRABLE; NICE COLOR AND DETAIL)**
- _____ 177. **FENTON 1910 BPOE DETROIT ELKS ICE CREAM SHAPED BOWL – GREEN (RARE AND VERY DESIRABLE; NICE SATINY FINISH W/ SILVERY HIGHLIGHTS)**
- _____ 178. **FENTON 1910 BPOE DETROIT ELKS RUFFLED BOWL – BLUE (RARE AND VERY DESIRABLE; NICE DETAIL AND IRID.)**
- _____ 179. Fenton Strawberry 2 Handled Bon Bon – Emerald Green (quite a scarce color; nice irid.)
- _____ 180. **FENTON STRAWBERRY 2 HANDLED BON BON – AMBERINA (RARE AND DESIRABLE; RED ALONG THE EDGE)**
- _____ 181. **7-1/2" FENTON ACORNS LOW RUFFLED BOWL – RED (RARE AND DESIRABLE W/ A SATINY FINISH)**
- _____ 182. 7-1/2" Fenton Acorns Low Ruffled Bowl – Amberina (very scarce; nice color and irid.)
- _____ 183. **9" FENTON HOLLY RUFFLED BOWL – RED/ AMBERINA (RARE AND DESIRABLE; NICE SATINY COLOR)**
- _____ 184. **7" FENTON COIN DOT DEEP ROUND BOWL – RED (RARE AND VERY DESIRABLE; REALLY NICE COLOR)**
- * _____ 185. **11-3/4" TALL FENTON PLUME PANELS SWUNG VASE – RED (VERY RARE AND VERY DESIRABLE; ONE TOUGH ITEM)**
- _____ 186. **9-1/2" TALL FENTON BUTTERFLY AND BERRY SWUNG VASE – RED SLAG (ANOTHER RARE ITEM; NICE BRIGHT IRID.; TOUGH)**
- _____ 187. **10-3/4" TALL FENTON WIDE PANEL BLANK SWUNG VASE – RED (VERY RARE ITEM; SUPER EXAMPLE; NICE)**
- _____ 188. **9" TALL FENTON FINE RIB STANDARD SWUNG VASE – RED (VERY NICE EXAMPLE W/ SATINY FINISH)**
- _____ 189. **IMPERIAL FLORAL AND OPTIC FTD. FLARED BOWL – RED (VERY SCARCE W/ TYPICAL NICE STRETCH EFFECT)**
- _____ 190. 8-1/4" Tall x 7-1/2" Flare Imperial Stretch Swung Vase – Red (very scarce and desirable; nice)
- _____ 191. 7-1/2" Tall x 6-3/8" Flare Imperial Stretch Swung Vase – Red (another example that is very attractive)
- _____ 192. 8" Fenton Stretch Low Console Bowl – Red (nice dark color w/ interior irid.)
- _____ 193. Fenton Stretch Cupped in Rose Bowl – Red (scarce w/ nice color and interior irid.)
- _____ 193A. 6" Tall x 7" Across Vineland Flared Stretch Vase – Wisteria (very scarce; nice item)
- _____ 194. 7-1/2" Fenton Horsehead Medallion Plate – Mari. (scarce and desirable; nice color and detail)
- _____ 195. 7-1/2" Fenton Vintage Grape Flat Plate – Amyth. (scarce; nice color and irid.)
- _____ 196. 7-1/2" Fenton Vintage Grape Flat Plate – Green (very scarce w/ nice satiny irid.)
- _____ 197. 7-1/2" Fenton Vintage Grape Flat Plate – Blue (another scarce item w/ nice irid.)
- _____ 198. 7-1/2" Fenton Vintage Grape Flat Plate – Mari. (probably as scarce as any of these)
- _____ 199. 10-1/2" Fenton Diamond Rib Standard Swung Vase – White (very scarce color for this pattern)

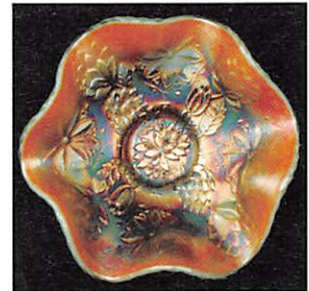
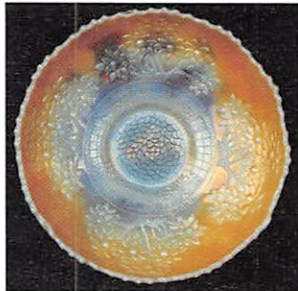
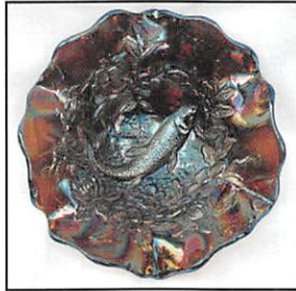
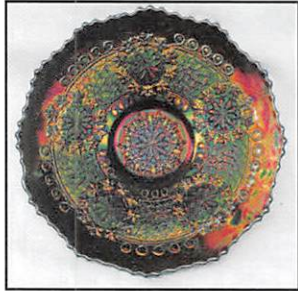
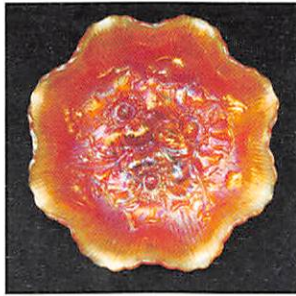
- _____ 199A. **19" TALL FENTON RUSTIC SWUNG FUNERAL VASE – WHITE (RARE; NICE AND FROSTY; HAS CHECK IN BODY)**
- _____ 200. **8-1/2" FENTON ORANGE TREE ICE CREAM SHAPED BOWL – MARI. / MOONSTONE (RARE AND VERY DESIRABLE; EXCELLENT EXAMPLE; NICE)**
- _____ 200A. Fenton Orange Tree Flared Punch Bowl and Base – Dk. Mari. (nice color and irid.)
- _____ 201. Fenton Vintage Grape Small Single Lily Epergne – Amyth. (scarce; nice satiny finish)
- _____ 202. Fenton Vintage Grape Small Single Lily Epergne – Blue (very scarce; nice satiny finish)
- _____ 203. Fenton Vintage Grape Small Single Lily Epergne – Green (very scarce; nice satiny finish)
- _____ 204. Fenton Vintage Grape Small Single Lily Epergne – Mari. (very scarce; tough in this color)
- _____ 205. **9" FENTON G&C BALL FTD. RUFFLED BOWL – COBALT BLUE OPAL. (VERY RARE AND VERY DESIRABLE; OPAL. ON EDGE)**
- _____ 206. 10" Fenton Paneled Blank Swung Vase – Green (scarce color; nice)
- _____ 207. **PAIR 9" TALL FENTON FLORENTINE CANDLESTICKS – WISTERIA (RARE COLOR; NICE MATCHED PAIR)**
- _____ 208. Pair 9" Tall Fenton Florentine Candlesticks – Celeste Blue (attractive pair; nice color)
- _____ 209. Pair 9" Tall Fenton Florentine Candlesticks – Ice Green (another attractive pair)
- _____ 210. **FENTON ROSE SPRAY STEMMED JACK IN THE PULPIT COMPOTE – CELESTE BLUE (VERY SCARCE ITEM IN A DESIRABLE SHAPE)**
- _____ 211. Fenton Rose Spray Stemmed Ruffled Compote – Mari.
- _____ 212. Fenton Stretch Plain Hat Shape – Celeste Blue
- _____ 213. Fenton Stretch Plain Stemmed Ruffled Compote – Celeste Blue
- _____ 214. 12-1/4" Tall Fenton Stretch Wide Panel Swung Vase – Celeste Blue (rare and very difficult item w/ nice stretch effect)
- _____ 215. **DUGAN FORMAL JACK IN THE PULPIT VASE – AMYTH. (RARE AND VERY DESIRABLE; NICE SHAPE AND COLOR)**
- _____ 216. **DUGAN FORMAL JACK IN THE PULPIT VASE – MARI. (ANOTHER RARE AND DESIRABLE; NICE COLOR)**
- _____ 217. 5-1/2" Dugan Heavy Grape/ Compass Ruffled Sauce – Purp. (very scarce item to find in any color)
- _____ 218. 5-1/2" Dugan Cherries Tight Crimped Edge Sauce – Purp. (another item w/ really nice color)
- _____ 219. Dugan Starfish Stemmed Compote w/ Tight Crimped Edge – Purp. (scarce shape w/ a nice finish)
- _____ 219A. **DUGAN OPEN OPALS TRI-CORNERED CRIMPED STEMMED COMPOTE – PURP. (RARE AND DESIRABLE IN THIS COLOR; SUPER!)**
- _____ 220. **6" DUGAN PERSIAN GARDEN FLAT PLATE – P. OPAL. (RARE AND DESIRABLE ITEM W/ GREAT OPAL.)**
- _____ 220A. Dugan Grapevine Lattice Tankard Water Pitcher – Dk. Mari. (rare in this color; nice and dark)
- _____ 221. 6" Dugan Persian Garden Flat Plate – White (very scarce w/ nice irid.)
- _____ 222. 7-1/2" Dugan Petal and Fan Crimped Edge Plate – Purp. (very attractive item; nice irid.)
- _____ 223. Dugan Target Squatty Flared Vase – White (super frosty example; nice shape)
- _____ 224. Dugan Target Squatty Flared Vase – P. Opal. (nice size w/ nice opal.)
- _____ 225. 9-3/4" Dugan Big Basketweave Swung Vase – White (very scarce and desirable; nice and frosty)
- _____ 226. 7-1/2" Dugan Bellflower 6 Ruffled Bowl – Purp. (really nice irid.)
- _____ 227. 5-1/2" Australian Ruffled Sauce – Purp.
- _____ 228. 5-1/2" Westmoreland Hobstar and Fruit Ruffled Sauce – Blue Opal. (scarce item w/ nice opal.)
- _____ 229. 5-1/2" Westmoreland Hobstar and Fruit Ruffled Sauce – P. Opal. (another nice item w/ attractive opal.)
- _____ 230. **9" TALL WESTMORELAND CORINTH SWUNG VASE – MARI. / MILK GLS. (VERY SCARCE; NICE IRID. AND BASE GLASS)**
- _____ 231. Imperial Open Rose Rose Bowl – Helios Green (scarce; silvery)
- _____ 232. **IMPERIAL LUSTRE ROSE FTD. I.C. SHAPED CENTERPIECE BOWL – PURP. (RARE ITEM IN A RARE COLOR; HAS TINY CHIP)**
- _____ 233. Imperial Lustre Rose Ftd. I.C. Shaped Centerpiece Bowl – Amber (another rare color for this item; chipped on edge)
- _____ 234. 6" Imperial Grape Flat Plate – Mari. (nice irid.)
- _____ 235. **5-1/2" TALL IMPERIAL THUMBPRINT AND OVALS VASE – MARI. (VERY SCARCE W/ EXCELLENT IRID.; NICE)**
- _____ 236. **IMPERIAL LOGANBERRY VASE – GREEN (VERY SCARCE; NOT A BAD EXAMPLE AT ALL)**
- _____ 237. Imperial Loganberry Vase – Mari. (very scarce; nice color and irid.)
- _____ 238. **16" TALL IMPERIAL RIPPLE SWUNG FUNERAL VASE – PURP. (RARE AND VERY DESIRABLE W/ EXCELLENT IRID.)**
- _____ 239. 11" Tall Imperial Beaded Bullseye Swung Vase – Purp. (super example w/ great irid.)
- _____ 240. 10-3/4" Tall Imperial Smooth Panels Swung Vase – Purp. (great color and irid.)
- _____ 241. 9-3/4" Tall Imperial Ripple Swung Vase – Purp.
- _____ 242. Fenton G&C Ftd. Fruit Bowl w/ Persian Medallion Int. – Mari.
- _____ 243. 7-1/2" Fenton G&C Low Ruffled Bowl – Amber.
- _____ 244. European or Australian Lg. Stemmed Ruffled Compote w/ Laurel Band and Bows – Mari.
- _____ 245. N'wood Rainbow (Plain Int.) Bowl w/ PCE and Plain Ext. – Amyth.

FOR THE RESULTS OF THIS OR ANY BURNS AUCTION SERVICE AUCTION SEND A S.A.S.E. AND \$3.00 (INCLUDE NAME OR DATE OF AUCTION) TO:

EMMA TILTON
P.O. BOX 273 • GNADENHUTTEN, OH 44629

VISIT US ON THE WEB!

<http://www.woodsland.com/burnsauktion>
for pictures, complete listings and upcoming auctions



111
140

BURNS

AUCTION SERVICE
P.O. BOX 608 • BATH, NEW YORK 14810

Pacific Northwest Carnival Glass Convention Auction

Saturday, August 14, 1999

Preview 7:00 A.M.

Auction 9:30 A.M.

at

The Greenwood Inn
10700 S.W.
Allen Boulevard
Beaverton,
Oregon 97005
(503) 643-7444
or (800) 289-1300
Fax (503) 626-4553



First Class Mail
U.S. Postage
PAID
Eugene, Oregon
Permit No. 305

