

# Summer Carnival Glass AUCTION

Saturday, July 24, 1999 • 9:00 A.M.

Preview on Friday 5-7 P.M. and Saturday 8-9 A.M.

Presented by

**Ayers Auction Service**

to be held at the

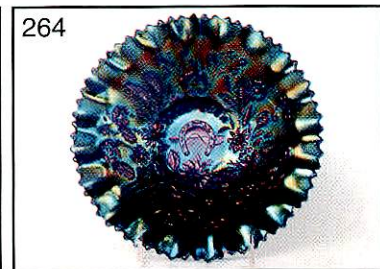
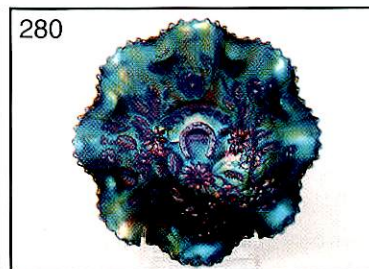
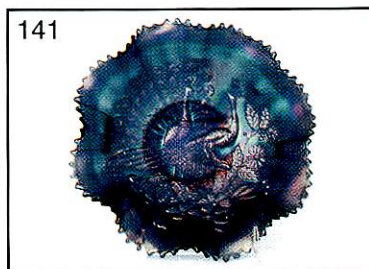
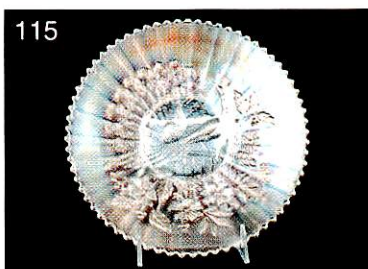
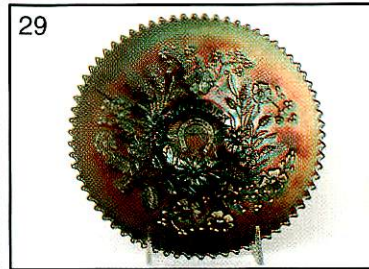
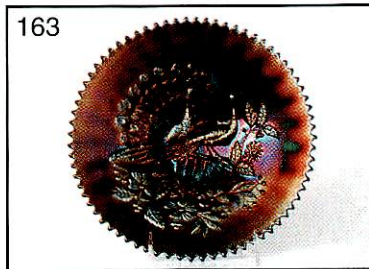
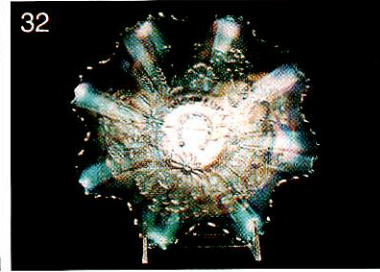
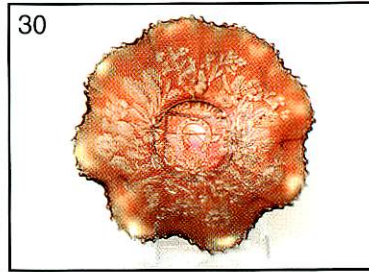
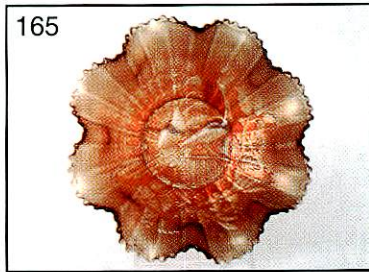
**Holiday Inn, Carlinville, Illinois**

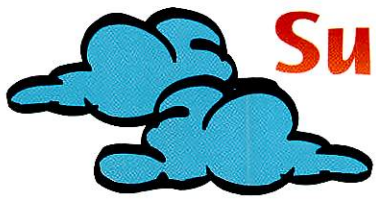
Exit #60 off of I-55 on the west side of the road.  
Just 30 miles south of Springfield, IL and 60 miles north of St. Louis, MO.

**Call (800) 322-7546 for Reservations**

Call by **JULY 10th** to get a special room rate.

Mention the Auction Service block of rooms.





# Summer Carnival Glass AUCTION



featuring: **LIVE TELEPHONE BIDDING**

presented by **Ayers Auction Service**

## Saturday, July 24, 1999 at 9:00 A.M.

with Preview on Friday: 5-7 P.M. and Breakfast Preview on Saturday: 8-9 A.M. at the **Holiday Inn, Carlinville, IL**. Exit #60 off of I-55 on the west side of the road. Just 30 miles south of Springfield, IL and 60 miles north of St. Louis, MO.

**Call (800) 322-7546 NOW for Reservations.**

**Make reservations by July 10th for a discounted rate. Mention the Ayers Auction block of rooms.**

**Room rate blocked at \$65.00, tax included, per night.**

We are pleased to bring to you the collection of Mary & John Gibson of Mt. Pleasant, TN. Mary & John have a passion for lovely Peacock and Good Luck Bowls & Plates. Their love of great iridescence shows throughout their collection.

We think you will be ecstatic with this quality and variety of glass. To see more color pictures, visit our website:

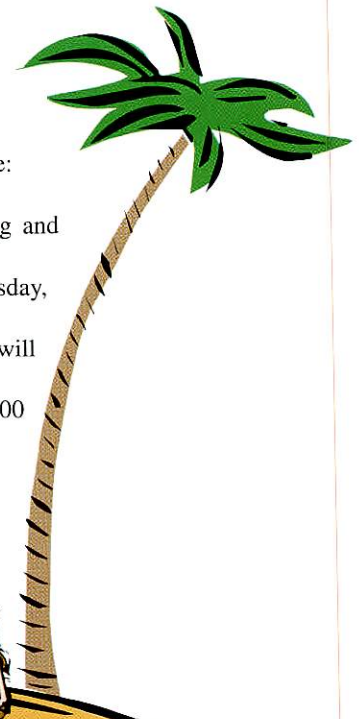
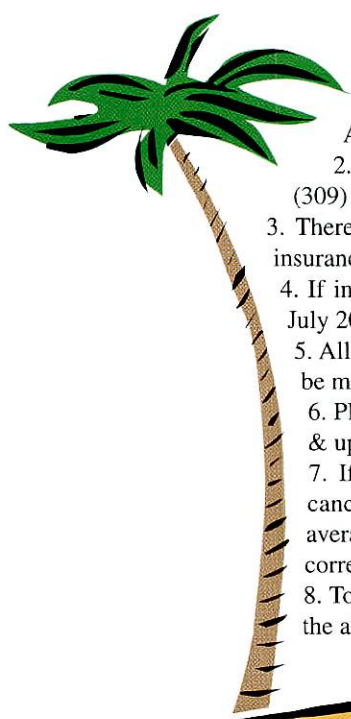
<http://carnival.ksnews.com/ayers/>

### Live Telephone Bid Policy

1. Live telephone bids will be arranged by sending the number(s) of the item(s) and your name, address, home phone # and the phone # where you can be reached on the day of the auction, Sat, July 24, 1999, during the hours the auction will be occurring, CST to: Ayers Auction Service, P.O. Box 320, Tremont, IL 61568-0320
2. Be aware, there will be a \$5.00 charge per phone call placed to you during the auction. This cost is in addition to Shipping, Insurance, and Handling Charges. You will be billed for each phone call, even if you are not the successful buyer.
3. We ask that you do not tie up the telephone lines by speaking at length with the staff of the Auction Service proceeding the completion of your LIVE BIDDING. The staff will have multiple calls to complete and your cooperation is appreciated. Bidders will be notified by a phone call if their bid(s) are successful. This call will be made 1-3 days after the auction is over.
4. Please have all bids in by Tuesday, July 20, 1999. All bids received after this date may not be carried out.
5. Arrangements to participate in LIVE TELEPHONE BIDDING may be made with Ayers Auction Service over the telephone, or by Fax, or by E-mail.

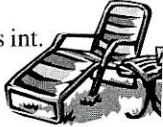
### Write-In Bid Policy

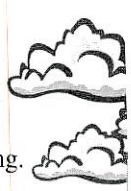
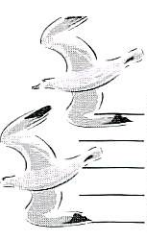
1. Write in (absentee) bids will be accepted by sending the numbers of the item(s) desired and the amount bid on each to:  
Ayers Auction Service, P.O. Box 320, Tremont, IL 61568-0320
2. All absentee bids may be done with the Auction Company over the telephone: (309) 925-3115, by fax: (309) 925-7777, or by e-mail to [ayers@dpc.net](mailto:ayers@dpc.net)
3. There will be a \$5.00 handling charge for each successful absentee bid. Shipping and insurance charges are additional.
4. If interested in placing an absentee bid you must contact Amy or David NLT Tuesday, July 20, 1999.
5. All bidders will be notified by a phone call if their bid(s) are successful. This call will be made 1-3 days after the auction is over.
6. Please place bids in the following increments: \$1 - \$300 use \$5.00 increments; \$300 & up use \$25.00 increments.
7. If you do not receive an item that sold for less than your bid, assume we canceled your bid because the piece of glass had below average color, manufacture problem, damage, or was not listed correctly.
8. To receive price list for this auction send \$3.00 and SASE to the above address. (Make checks payable to Amy Ayers.)



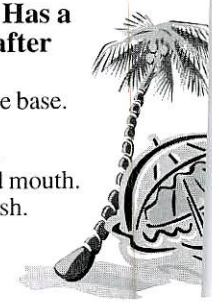


- \_\_\_ 1. P—Dugan Fisherman's Mug. Good example.
- \_\_\_ 2. W—Dugan Six Petal 8" ruffled Bowl. Frosty. Beautiful & scarce.
- \_\_\_ 3. Dk. M—Fenton Dragon & Lotus 8 1/2" ruffled Bowl.
- \_\_\_ 4. W—Dugan Double Stem Rose 9" Plate. Fantastic example of a great plate.
- \_\_\_ 5. M—Pineapple & Fan 2 Pc Tumble Up Set. Beautiful.
- \_\_\_ 6. **Dk. M—Josef Inwald Co. (Czechoslovakian) Princeton 8" Vase. Super! Couple of pinheads on base & ribs but they don't seem to deter the beauty of this super rare vase.**
- \_\_\_ 7. **Electric A—Imperial Beaded Bullseye 9" Vase Super Electric! Wow!!**
- \_\_\_ 8. A—Fenton Cosmos Vt. 10" ruffled sawtoothed Bowl.
- \_\_\_ 9. A—Fenton Vintage Fernery w/ 3 scroll ft. Rough feet.
- \_\_\_ 10. P—(Contemporary) Fenton Double Dolphin Candy Jar. Bottom Only.
- \_\_\_ 11. A—Westmoreland Coin Dot 8" ruffled Bowl.
- \_\_\_ 12. M—Fenton Butterfly & Berry 5" berry Bowl.
- \_\_\_ 13. Smoke—Imp. Diamond Lace 10" ruffled Bowl. Pretty.
- \_\_\_ 14. **Sapphire—Fenton Blackberry Spray 2-sides-up Hat. Has light marigold overlay. Scarce.**
- \_\_\_ 15. **AO—N Peacocks 9" ruffled Bowl with sawtooth edge. Dripping with opal, no butterscotch here. Beautiful example.**
- \_\_\_ 16. **Fiery A—Dugan Four Flowers 10 1/2" Chop Plate. Lightly iridized on outer edge. This special plate has the appearance as if it would be dark Black Amethyst. Super Rare!**
- \_\_\_ 17. A—N Three Fruits 9" Plate w/ sawtooth edge and basketweave exterior. Super multicolored.
- \_\_\_ 18. B—Fenton Butterfly & Berry Master Berry Bowl. Satin finish. Nice example.
- \_\_\_ 19. P—N Strawberry 7 1/2" Handgrip Plate with basketweave exterior & sawtooth edge. Sweet.
- \_\_\_ 20. P—Imperial Grape 11" ruffled deep Bowl. Fabulous.
- \_\_\_ 21. **M—N Wide Panel 4-Lily Epergne, large size. Absolutely wonderful example. Super.**
- \_\_\_ 22. **G—Fenton Orange Tree Loving Cup. Mmm good.**
- \_\_\_ 23. AO—(Contemp.) Fenton Beaded Acanthus Cruet with Stopper. Pretty.
- \_\_\_ 24. Electric P—Dugan Thin Panel 7" Vase with six-sided flared out mouth. Electric iridescence.
- \_\_\_ 25. **Ice B—N Rose Show ruffled Bowl. Small buff spot on edge. Wonderful example, with great color.**
- \_\_\_ 26. **W—N Peacocks 8" PCE Bowl w/ plain back. Super frosty & rare with the pie crust edge.**
- \_\_\_ 27. **Tangerine—Fenton Double Dolphins fan-shaped Vase. Super stretch iridescence. Nice.**
- \_\_\_ 28. **G—Fenton Thistle 9" ruffled Bowl w/ Horlacher Advertising on outside base. Super piece.**
- \_\_\_ 29. **G—N Good Luck 9" Plate with basketweave back & sawtooth edge. Outstanding!**
- \_\_\_ 30. **Pumpkin M—N Good Luck stippled 9" ruffled Bowl w/ rib back & sawtooth edge. Gorgeous.**
- \_\_\_ 31. **Electric B—N Good Luck 9" PCE Bowl w/ ribbed back & sawtooth edge. Minor pinpoint on thumb of shoe. Blow away electric purples & blues.**
- \_\_\_ 32. **Sapphire—N Good Luck 9" ruffled Bowl with Ribbed Back & sawtooth edge. WOW!! This is a SUPER Bowl!**
- \_\_\_ 33. M—Imperial Columbia Whimsy Plate. Nice.
- \_\_\_ 34. M—Dugan Cherries ruffled Bowl w/ 3 ball feet.
- \_\_\_ 35. M—Fenton Chrysanthemum 9" Lg Bowl. Interior bruise
- \_\_\_ 36. Choice—3 Dk. M—N Grape & Cable Regular Water Tumblers. All equally dark & pretty.
- \_\_\_ 37. Choice—4 Tumblers  
2 ea: P—N Grape & Cable Regular Water Tumblers.  
2 ea: P—N G & C Tankard Tumblers, one is electric.
- \_\_\_ 38. Choice—3 N Singing Birds Tumblers—1 is Purple, 2 are Green.
- \_\_\_ 39. Choice—4 Fenton Tumblers  
2 ea: Dk M—Butterfly & Fern  
2 ea: M—Apple Tree.
- \_\_\_ 40. **Ice G—N Peacock & Urn 10" Master Ice Cream Bowl. Absolutely beautiful.**
- \_\_\_ 41. M—Golden Wedding pint size Whiskey Bottle with screw on bottle cap but no label.
- \_\_\_ 42. M—Fenton Mikado ICS flared out Compote. Sweet.
- \_\_\_ 43. G—Imperial Ripple 8" Vase. Standard size 3" base.
- \_\_\_ 44. **A—N G & C Banana Boat Shape. Wonderful irid.**
- \_\_\_ 45. M—Standard Vase. Metal base has nice lattice, flowers, & fence work, but also sm dent on base of the metal holder.
- \_\_\_ 46. **Ice B—N Nippon 9" ruffled Bowl. A super pastel.**
- \_\_\_ 47. **Cherry R—Fenton Panther 6" ruffled Sauce. Perfect example of a very rare sauce.**
- \_\_\_ 48. **Ice G—N Fruits & Flowers 10" ruffled Bowl. Wonderful pastel colors but a couple of wear marks on the fruit. Still a very good example.**
- \_\_\_ 49. Ice B—N Drapery Candy Dish. Beautiful pastel iridescence. One minor toe nick.
- \_\_\_ 50. **P—Imperial Morning Glory 17 1/2" Funeral Vase with 4 3/4" base & 8" flared mouth.**
- \_\_\_ 51. **Clear to M—Imperial Morning Glory 18" Funeral Vase w/ 4 3/4" base & 8" flared mouth. Bruise on outside bottom of base. Still Impressive.**
- \_\_\_ 52. **M—N Wide Panel 13" Funeral Vase with 4 3/4" base and 6" mouth. Big and Beautiful.**
- \_\_\_ 53. M—Fenton Peacock & Urn 9" Plate w/ Bearded Berry ext. Minor chip on the backside of one tooth. Still a beaut.
- \_\_\_ 54. **Electric B—Fenton Peacock & Urn 9" Plate. Fantastic.**
- \_\_\_ 55. **Cherry R—Fenton Acorn 6 1/2" deep Bowl. Does have manufacturer internal stress fractures in glass. Very weird, but has wonderful color.**
- \_\_\_ 56. **B—N Poinsettia & Lattice 9" ruffled Bowl with sawtooth edges and 3 scroll feet. Great.**
- \_\_\_ 57. P—Dugan Rays 6 1/2" flattened CRE Plate. Some wear on interior. Electric highlights. Rare.
- \_\_\_ 58. P—Imperial Ripple 9" Vase. Soft satin finish. Has a 3 1/2" base and a 6" mouth. Real pretty.
- \_\_\_ 59. **AO—N Beaded Cable Rose Bowl. Great butterscotch iridescence. Always a favorite.**
- \_\_\_ 60. P—N Beaded Cable Rose Bowl. Rough feet. Pretty!
- \_\_\_ 61. M—Dugan Peach and Pear Banana Boat.
- \_\_\_ 62. **A—N Wild Strawberry 7 Pc. Berry Set. Great Iridescence of purples, greens, & blues. One teenie pinhead inside master. Super Set!**
- \_\_\_ 63. PO—Dugan Flowers & Frames rufld domed 9" Bowl.
- \_\_\_ 64. A—N Grape & Cable 10" Master IC Bowl w/ bsktwv ext.
- \_\_\_ 65. M—N Wishbone 8" ruffled Bowl with 3 scroll feet.
- \_\_\_ 66. M—US Glass Co. Whirling Star Punch Bowl & Base with 3 cups. Base has roughness on bottom.
- \_\_\_ 67. Dk M—Sowerby (England) Daisy Block Rowboat. Perfect
- \_\_\_ 68. P—N Acorn Burrs Creamer.
- \_\_\_ 69. P—N Acorn Burrs Spooner.
- \_\_\_ 70. **Crystal w/ Marigold intaglio—3 Pc. Set Golden Pansy 8" round master Bowl w/ 2 small 4 1/2" Bowls. Rare!**
- \_\_\_ 71. M—Fenton Orange Tree standard Mug w/ flared lip. Nice
- \_\_\_ 72. **M—N Poinsettia & Lattice 9" ftd Bowl. Very nice.**
- \_\_\_ 73. **M—Crown Crystal (Australia) Bullrushes & Bush Orchids. 8" ruffled Bowl. Sweet treat. Scarce.**
- \_\_\_ 74. Smoke—Imperial Ripple 12" Vase. Multicolored irid. Great
- \_\_\_ 75. P—Imperial Grape Wine Decanter with Stopper. Stopper has crack but this piece has awesome iridescence.
- \_\_\_ 76. B—Fenton Rustic 10" Vase.
- \_\_\_ 77. **Ice G—Fenton Cannonball shaped Draperies "Lotus" hand painted Pitcher. Awesome!**
- \_\_\_ 78. B—Fenton Cannonball shaped "Cherries & Little Flowers" hand painted Pitcher & 5 Tumblers.
- \_\_\_ 79. A—Fenton Grape & Cable 8" rfld ftd Bowl w/sawth edge
- \_\_\_ 80. **P—Dugan Victorian 11" ruffled Bowl. Beautiful and multicolored. Excellent example.**
- \_\_\_ 81. M—N Greek Key Nut Bowl w/ Stippled Rays int.





- 82. G—Fenton Concord 8" 3-in-1 Bowl. Super & Scarce.
- 83. Electric P—N Town Pump. Perfect w/multi-color irid.
- 84. Cel B—N Concave Diamonds Tumbler. Nice
- 85. M—Dugan Beaded Basket.
- 86. M—Westmoreland Coin Dot 8 1/2" round flared-out Bowl.
- 87. P—Westmoreland Pillow & Sunburst 7 3/4" ruffled Bowl.
- 88. Choice—5 Tumblers  
2 ea: M—Butterfly & Berry Tumblers.  
1 ea: Blue— Butterfly & Berry Tumbler. Buffed rim.  
1 ea: M—Lattice & Grape Tumbler.  
1 ea: M—Enameled painted Tumbler w/Rib Panels int.
- 89. Choice—2 Tumblers  
1 ea: A—N Acorn Burrs Tumblers w/ gold highlights  
1 ea: A—N Acorn Burrs Tumbler. Has electric highlights plus a pinhead on one leaf.
- 90. Choice—3 Tumblers  
1 ea: Dk. M—N Raspberry Tumblers. Nice color.  
1 ea: G—N Raspberry Tumbler.  
1 ea: Lime—N Raspberry Tumbler. Marie chip. Pretty.
- 91. Dk M—Imperial Poppy Show Vase. Super dark and beautiful. Getting harder to find.
- 92. Lav.—Imp. Pansy 9" ruffled Plate. Soft coloring.
- 93. B—Fenton Rustic 10" Vase. Open bubble at bottom.
- 94. M—N Oriental Poppy Tankard & 6 Tumblers. Beautiful and scarce. Nice set.
- 95. P—N Oriental Poppy Tankard. Breathtaking.
- 96. Choice—6 Tumblers  
3 ea: P—N Oriental Poppy Tumblers  
3 ea: P—N Oriental Poppy Vt. Tumblers with ribbed interior. Outstanding electric highlights.
- 97. Amber—Fenton Dragon & Lotus. 8" round Bowl with plain back. Gold iridescence.
- 98. P—N Acorn Burrs Pitcher. Multicolored example.
- 99. Choice—6 Tumbler  
P—N Acorn Burrs. One has Fracture. All of the tumblers have electric effects and lots of colors.
- 100. AO—N Dandelion ~~Mag.~~ Super example.
- 101. AO—N Double Loop Chalice or Open Sugar. Rare little item in any color.
- 102. Amber—Imperial Grape 6" ruffled Sauce. Nice.
- 103. G—Mlbg. Blackberry Wreath 6" Sauce w/ 3-in-1 edge. Super satin example.
- 104. B—Fenton Peacock & Urn 6" ICS Sauce. A beauty!
- 105. P—Imperial Scroll Embossed 6" ruffled Sauce. Purple, green & blue highlights. Super.
- 106. Smokey B—Fenton Two Flowers 6" ruffled Sauce with 3 ball feet & marigold overlay.
- 107. M—N Peacock & Fountain Tumbler. Beautiful & dark.
- 108. M—N Grape Arbor Tumbler. Beautiful & dark.
- 109. B—Eda (Sweden) Kulor 6" Vase. Fantastic example of a super rare & scarce vase. This one is so sweet it gives me a cavity just looking at it! Super Example!
- 110. BA—Crown Crystal (Australia) Magpie 9 1/2" ruffled Bowl. Excellent! Fantastic!
- 111. Choice—2 Sauces.  
Crown Crystal (Australia) King Fisher. Exactly the same except 2 different looks of iridescence.
- 112. BA—Crown Crystal (Australia) King Fisher Vt. 5 1/4" Sauce with wattle blossom branches around the bird. Neat & Scarce.
- 113. BA—Crown Crystal (Australia) Swan 9 1/2" Master Bowl. Electric & radium. A real knock out.
- 114. M—Crown Crystal (Australia) Piping Shrike/Thunderbird 9 1/2" ruffled bowl. Super dark and one of the better ones we've seen. Great piece.
- 115. W—N Peacocks 9" Plate with Rib back. Sweet.
- 116. G—N Sunflower 8 1/2" ruffled Bowl with Meander exterior. Pretty & scarce.
- 117. M—Imperial Double Dutch 8" round Bowl with 3 hex feet. Beautiful color. Chipped foot.
- 118. R—Fenton Blackberry Spray JIP Hat with candy ribbon edge. Rare shape. Super neat.
- 119. B—Dugan Pair of Royal Lustre Candlesticks. Stunning.
- 120. M—Fenton Peacock & Urn 9" ruffled Bowl with Bearded Berry exterior. SUPER Example!
- 121. B—Fenton Peacock & Urn 9" ruffled Bowl with Bearded Berry exterior. As wonderful as the one above!
- 122. B—Imperial Ripple 10" Vase. Has a 3" base & 20 point star. Super rare full color blue through vase. Hard to find an Imperial blue.
- 123. PO—Dugan Target 6 1/2" Vase, 6 1/2" flared-out mouth.
- 124. M—Dugan Target 11" Vase.
- 125. Pastel M—N Tree Trunk 6" Vase with standard size base and 5" flared-out mouth. Nice coloring.
- 126. P—N Corn Vase, standard style. Wonderful gold & purple iridescence.
- 127. M—Fenton Persian Medallion 10" ftd Fruit Bowl with Grape & Cable exterior. It commands attention.
- 128. G—Fenton Open Edge ruffled Basket, small size with 2 Rows Open.
- 129. Dk. M—Imperial Four Seventy Four 8" Vase. Absolutely perfect. Very, very rare and very, very desirable.
- 130. M—Sowerby (England) Pinwheel/Derby 8" Vase. Scarce item and another rare vase.
- 131. M—Brockwitz (Germany) Triands 6" Vase with a 5" unusual flared-out mouth.
- 132. M—Heavy Vine Tumble Up Bottle Only.
- 133. Smokey B—Fenton Two Flowers 10" round Bowl with 3 spade feet & marigold overlay. Inside chiggers on bottom side of two of the spade feet.
- 134. G—N Grape & Cable Plate. Emerald green highlights. Has one factory pulled out of shape tooth. Still a beauty to behold!
- 135. A—Dugan Vintage domed ruffled Bowl. Satin finish.
- 136. Ice B—N Nippon PCE Bowl with soft pastel finish. Pretty & scarce.
- 137. Sapphire—N Thin Rib 14" Midsize Funeral Vase. Has a 4 3/4" base & a 5" mouth. Manufacturer's roughness around flames on mouth. Still a rare and appreciated vase.
- 138. A—Fenton Rustic 17" Funeral Vase. Has a 5 1/4" base & a 8" mouth. With it's 11 rows each containing 21 hobs, it is massive and impressive. There is a small pinhead on one bottom row hob probably from manufacturer when it came out of the mold. Wonderful!
- 139. M—Mlbg Hobnail Variant 16 1/2" Vase. Nice example.
- 140. Dk. M—Imperial Morning Glory 16" Funeral Vase. Has a 5" base & 7" mouth. Dark & super colored.
- 141. Electric B—N Peacock ruffled Bowl with Thin Rib back. This is what carnival dreams are made of. Couple of very minute pinheads. KILLER!
- 142. G—N Wild Strawberry 10" ruffled Bowl with sawtooth edge & basketweave ext. Satiny.
- 143. M—N Strawberry 9" ruffled Bowl with sawtooth edge. Nice & pastel. One rough point.
- 144. M—N Daisy & Plume stemmed Rose Bowl. Cute.
- 145. PO—Dugan Stippled Petals dome base Banana Shaped Bowl with heavy ruffled edge.
- 146. W—US Glass Co. Cosmo & Cane 9" round Master Berry Bowl. Super-duper pastels. WOW!
- 147. M—N Tree Trunk 16" Midsize Vase. Has a 3 1/2" base & 6" mouth in the sought after plunger base. Fantastic Example!
- 148. B—Fenton Fine Rib 18 1/2" Vase with mid-size base. Swung to maximum height.
- 149. P—N Thin Rib 7" Vase with 5" flared mouth.
- 150. PO—Dugan Thin Panel 7 1/2" Vase w/ 6-sided mouth.
- 151. A—Fenton Thistle 9" ruffled Bowl. Satin finish.

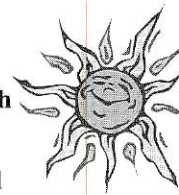




- 152. A—N Smooth Rays ruffled Bowl with basketweave exterior. Has stretchy iridescence.
- 153. M—Imperial Grape ruffled 9" Plate. Nice coloring.
- 154. PO—Dugan Fish Scale & Beads 7" Banana Boat Bowl.
- 155. Choice—2 each B—Sowerby (England) Covered Hen. Both hen's are equally beautiful.
- 156. G—N Wishbone 9" ruffled Bowl with sawtooth edge and 3 scroll feet. Pretty & satiny.
- 157. Pastel Yellow/G—Iridized Art Glass Ornate Bowl with a decorative silver center handle which screws into the metal base. The bowl is 10" round with a cupped-in ruffled mouth. It has an ice effect exterior and a smooth interior. Rare & Old. Possibly Stuben.
- 158. M—Imperial Ripple 7" Vase with a 2 1/2" base and 16 point star. This little cutie has disappearing ripples but shows vertical interior ribbing.
- 159. P—Dugan Thin Panel 5 1/2" Vase w/ ruffled 5" mouth.
- 160. M—N Grape & Cable Hat Pin Holder. Very dark at top. Great Example.
- 161. PO—Dugan Ski Star 8 1/2" Banana Dish shaped Bowl with dome base and crimped edge.
- 162. PO—Dugan Ski Star 11" ruffled Master Berry Bowl. Just plain beautiful!
- 163. A—N Peacocks 9" Plate with Rib Back. Pretty piece. May have small pinheads (difficult to see).
- 164. A—N Peacocks 9" ruffled Bowl with Rib back. Dark purple, green & blue irid. Pretty.
- 165. M—N Peacocks 8" ruffled Bowl w/ Rib back. Sweet.
- 166. M—Lg Swirl 14" Platter.
- 167. Choice—4 Green US Glass Omnibus Tumblers. Unique base color and iridescence. (3 have factory ground bases). First green one's we've heard of.
- 168. Choice—4 Marigold US Glass Co. Omnibus Tumblers. All have the typical ground bases. Rare.
- 169. M—US Glass Co. Rising Sun Covered Butter Dish. Rare & Beautiful.
- 170. Amber—Riihimaki Western Thistle Tumbler. Nice coloring. Small nip on marie. Super Rare.
- 171. Amber—Riihimaki Western Thistle Pitcher. Chip on marie. Sweet & very neat pitcher.
- 172. M—US Glass Co. Rising Sun pedestal Water Pitcher. Perfect in color & uniformity.
- 173. M—US Glass Co. Rising Sun Juice Tumbler. Great. Scarce little juice.
- 174. Pastel M—Fenton Acorn 7" ruffled Bowl.
- 175. Light M—N Three Fruits 9" Plate with basketweave ext. Slight wear on fruit but it doesn't harm this beautiful example.
- 176. B—N Three Fruits stippled 9" Plate with Rib Back. The best we have ever seen. Knock out iridescence. Only problem is a chip on the plate face near the edge, still awesome!
- 177. G—N Three Fruits 8 1/2" ruffled Bowl with basketweave back. Perfect example.
- 178. B—(Contemp.) St. Clair 5 1/4" Plate with Grapes. Cute. Looks like it was made from a punch cup, minus handle.
- 179. PO—Dugan Double Stem Rose dome footed 8" ICS Bowl. Nice opal effects.
- 180. Dk Ice B—N Peacock at the Fountain Master Berry Bowl. Rich Blue Color. Wonderful!
- 181. Blue Fenton Orange Tree 9" ruffled Bowl with collar base & Bearded Berry exterior.
- 182. Electric B—Fenton Vintage Fernery. The best I've ever seen. Wow!!
- 183. M—Fenton Cut Arcs 9" Bowl w/CRE. Plain interior.
- 184. Choice—2 each Red Fenton Fine Rib 9 3/4" Vases. Super Cherry Red with slight slag effect on bases. Both are equally awesome & hard to find in a pair.
- 185. M—Fenton Kittens Saucer. Wonderful!
- 186. M—Fenton Kittens Cup. Perfect!
- 187. M—Birds & Grapes/Cockatoo Wall Pocket. Nice.

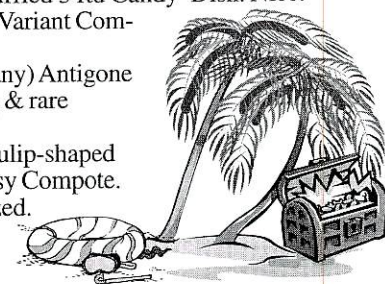
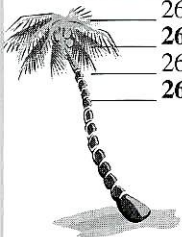
- 188. Amber—Imperial Hattie 9" deep ruffd Bowl.Unique.
- 189. G—Fenton Feather Stitch 8 1/2" ruffd Bowl. Soft look.
- 190. M—Jain (India) Serpent/Fish Variant 9" Vase. This unique vase wraps counterclockwise around the vase (opposite of fish). It is a rare gem. Pay attention vase collectors...I can't remember one of these ever being offered at auction.
- 191. A—Mlbg Blackberry Wreath 5 1/2" ICS Sauce. Great.
- 192. B—Fenton Blackberry Miniature Compote. This little cutie is mostly flattened with a slight curved-in lip.
- 193. Red/Amberina—Fenton Holly goblet-shaped Compote. Nice. One of the best examples seen.
- 194. M—Fenton Stag & Holly 8" ruffled Bowl, spade footed but the feet are chipped.
- 195. Electric P—N Strawberry 9" Plate with Plain back. Awesome electric iridescence. A Wonderful Plate!
- 196. AO—N Drapery Rose Bowl. Super, Super, Super Dark. One of the better examples out there.
- 197. P—Dugan Circle Scroll 3-Corner Hat from Tumbler. Has hand-painted words on it: "Souvenir Fitzgerald GA". It's Unique.
- 198. B—Fenton Dragon & Lotus ICS 9" Bowl. Nice.
- 199. P—Imperial Scroll Embossed 8" ruffled Compote. Exterior pattern is the Eastern Star. Green, pink, & purple irid.
- 200. B—Fenton Holly 8" deep round Bowl.
- 201. Olive G—Imp. Ripple 9" Vase. Nice although Not Iridized.
- 202. Amber—Riihimaki (Finland) Grand Thistle Tumbler w/ unground base. Sweet example of a rare tumbler.
- 203. M—US Glass Omnibus Tumbler w/ factory grnd base.
- 204. M—Hobstar & Shield Tumbler. Super hard to find.
- 205. Dk M—Fenton Panelled Dandelion 5 Pc Water Set. Beautiful matching set.
- 206. M—N Dandelion ~~W~~ Kard. As sweet as they come!!!
- 207. Choice—6 each—M—N Dandelion Tumblers. All have fantastic multicolored irid.
  - 1—with minor no see bruise inside.
  - 1—with straight up lip variation.
- 208. Ice B—N Fine Cut & Roses Rose Bowl. Perfect feet with Fancy interior.
- 209. Electric P—N Fine Cut & Roses Rose Bowl. Normal nicks on feet with plain interior. Absolute Stunner.
- 210. BA—Dugan Dogwood Sprays 9" shallow ruffled Bowl w/ dome base. Absolute Beaut!
- 211. Aqua—N Drapery 8" Vase w/ normal nicks on feet. Loaded with aqua all the way thru & beautiful marigold overlay.
- 212. Electric B—Fenton Stag & Holly 9" deep ruffled Bowl w/3 ball feet. Super iridescence. Perfect & Wonderful.
- 213. Dk M—N Bushel round Basket. Inside rim buff mark.
- 214. W—N Bushel eight-sided Basket. One chigger bite on inside underneath of a foot hub. Frosty & Pretty.
- 215. B—N Bushel round Basket. Perfect feet and great irid.
- 216. Lav—Imperial Pansy 9" ruffled low Bowl/Plate. Nice.
- 217. M—Fenton Orange Tree 10" ruffled Fruit Bowl w/ 3 ball feet. These are usually yuk but this one is Wonderful!
- 218. Dk M—Fenton Thistle Banana Boat. Beautiful dark example. Cool multi-colors.
- 219. P—N Wishbone 8 1/2" ruffled Bowl w/ 3 scroll feet & sawtooth edge. Small chigger bite on one tooth.
- 220. BA—Four Flower Variant 10 1/2" ruffd Bowl. It's super blues & purples could knock your socks down. Wow!
- 221. M—Dugan Pony 9" ruffled Bowl. Super multi-colors. One of the better one's out there. Looks like a rainbow.
- 222. P—N Grape & Cable 8 1/2" ruffled collar base Bowl. Super golds, greens & blue highlights. Shazaam! Super duper! One open bubble on one sawtooth.

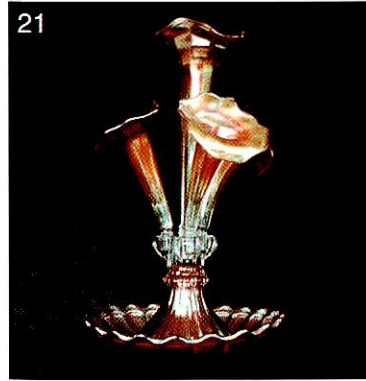
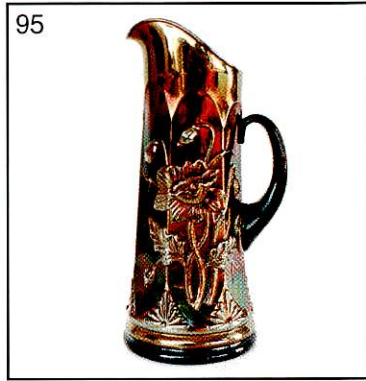
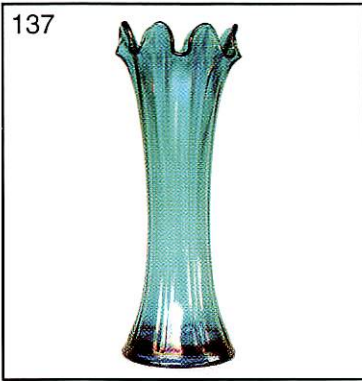
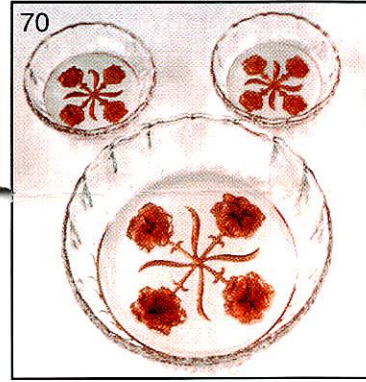
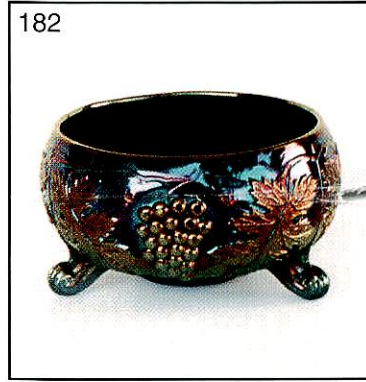
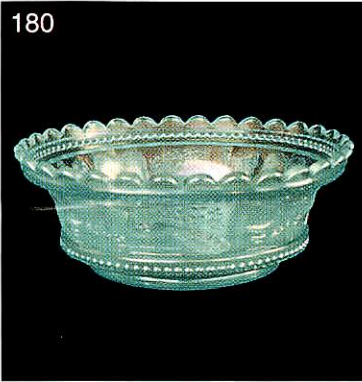
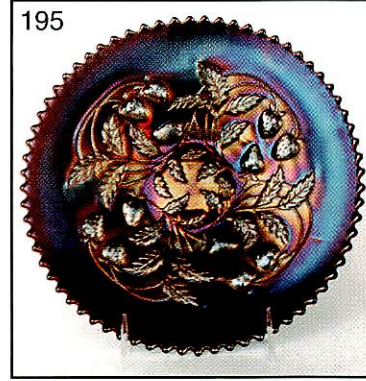
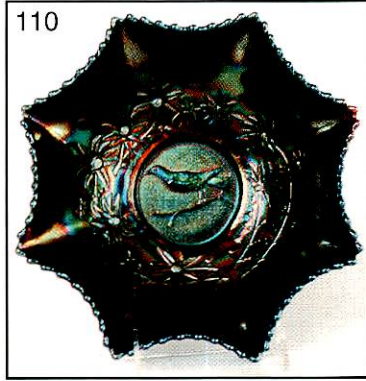
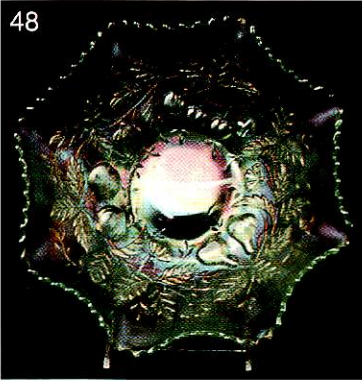
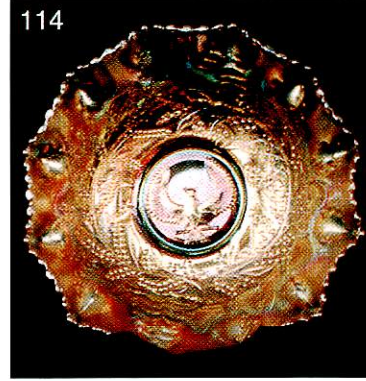




- 223. G—Fenton Peacock & Grape 8" ICS Bowl with 3 spade feet. Super green irid. jumps out at you.
- 224. P—N Grape & Cable 9" Plate w/ collar base and sawtooth edge. Nice emerald green highlights.
- 225. P—N Grape & Cable 9" ruffled Bowl with collar base & sawtooth edge. Rare double N manufacturer signature on bottom of bowl.
- 226. M—Fenton Stag & Holly 10 1/2" large ICS shallow Bowl w/ 3 scroll feet and attractive scalloped edge. Sweet.
- 227. **Electric P—Dugan Ski-Star 11" ruffled Bowl. Super electric multi-colors.**
- 228. **Electric B—N Good Luck ruffled Bowl with Ribbed Back. This sweet, really neat treat has spectacular purple iridescence.**
- 229. M—N Three Fruit stippled & ruffled 9" Bowl. Nice even though it has a flake off one point.
- 230. A—Dugan Stork & Rushes 2-sides-up Hat. Too Cute. Has a hard to notice small flea bite on lattice band.
- 231. A—N Peacock & Urn Sauce. Soft satin colors.
- 232. **Electric B—N Poppy Pickle Dish. Super duper blow away multicolor irid. A really spectacular item.**
- 233. Dk M—N Grape & Cable Sm. Punch Bowl & Base plus 2 Cups (1 Cup Cracked). Dark in color. Great.
- 234. G—N Daisy & Plume 3 footed Candy Dish with Raspberry interior. Roughness on feet.
- 235. P—Fenton Heart & Vine 8 1/2" ruffled Bowl.
- 236. M—Fenton Floral & Grape Variant Tumblers, 5 total—2 with damage.
- 237. **P—N Singing Birds Mug with "Amazon Hotel" advertising on bottom. Nice Example.**
- 238. **B—Fenton Leaf Tears Tumbler. Chipped foot. That's ok cause this little baby is hard to find.**
- 239. G—Mlbg Holly Whirl card tray shaped Bon Bon. Nice.
- 240. Cel B—Dugan Swan. Too Cute!
- 241. B—Fenton Persian Medallion square shaped Bon Bon.
- 242. **Dark R—Fenton Blackberry Spray ruffled Hat. One of the better ones out there w/super irid. Shazaam!**
- 243. P—Fenton Butterfly & Berry 9" Vase. Super sweet deep, deep purple example.
- 244. M—Fenton Butterfly & Berry 8 1/2" Vase. Marie flake.
- 245. A—Dugan Flower & Beads 7" tri-cornered Plate. Super.
- 246. PO—Dugan Flower & Beads 7" tri-cornered Plate. Nice example with lots of opal.
- 247. M—Fenton Holly ruffled Hat w/ high gloss radium.
- 248. B—Fenton Fern Panels 3-in-1 ruffled Hat. Marie chip.
- 249. Choice—2 Vases.  
Completely Marigold—Dugan Beauty Bud 9" Vase. Truly Marigold from top thru its feet—Dugan Twigs 9" Vase with twig feet. Both are TRUE Beauties.
- 250. Electric P—N Grape & Cable Powder Jar & Lid. Super electric highlights on this awesome example. Little roughness on inside lid, no harm.
- 251. Super Dk M—N Drapery 7" Vase. Pretty but does have chigger bite on one toe.
- 252. Electric P—N Tree Trunk 10" Vase with standard 3 1/2" marie & 4" mouth. Beautiful electric iridescence.
- 253. M—N Hearts & Flower Compote. Wonderful pastels. Manufacturer's split on edge.
- 254. A—N Star of David & Bows 7 1/2" dome ftd ruffled deep and pulled up Bowl. Super piece.
- 255. **Pink—Dugan Beaded Basket w/ marigold overlay. Rare in pink base glass, only a couple are known.**
- 256. M—Imperial Crackle 8 Pc Water Set. 1 lemonade tumblr.
- 257. Dk M—Imperial Lustre Rose large 11" ftd. Bowl. Nice
- 258. M—Imperial Double Dutch 9" footed Bowl. Sweet.
- 259. A—Fenton Vintage 7 1/2" CRE Bowl. Nice satin finish.
- 260. PO—Dugan Single Flower 9" ruffled Bowl.
- 261. **M—N Poppy Pickle Dish. Super pastels. Beautiful!**
- 262. G—N Fine Rib 7" Vase with Alaskan treatment.
- 263. **M—N Good Luck 9" PCE Bowl with Rib back. Super-duper coloring.**

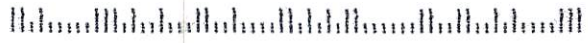
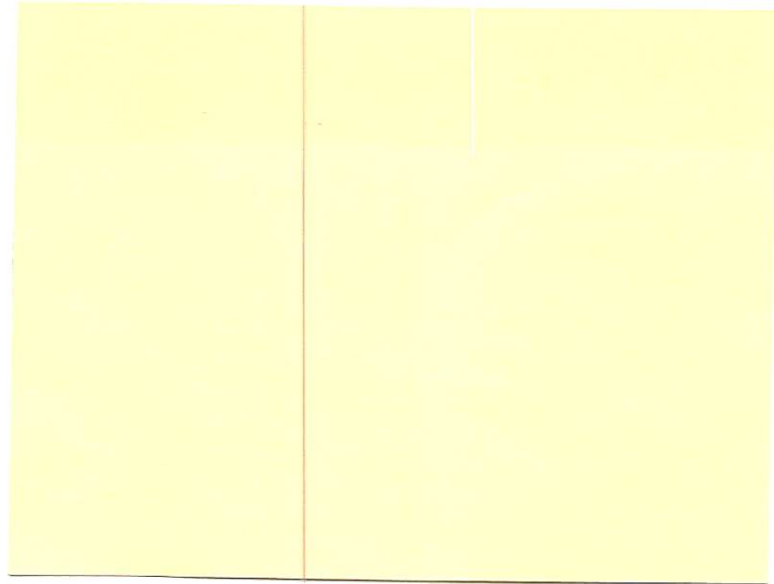
- 264. **Electric B—N Good Luck 9" PCE Bowl with Rib Back. This one will blind you. Super colors. Wow!**
- 265. **A—Fenton Elks 7" ruffled Bowl. Wonderful example. Absolutely beautiful rare bowl.**
- 266. **B—Fenton Thistle Banana Boat. Multicolored iridescence. One of my personal favorites.**
- 267. P—Grape & Cable Butter Dish. The top is perfect but the bottom has a chip on it's scalloped edge.
- 268. P—Grape & Cable 2 Pc Cream & Sugar Breakfast Set. Fantastic highlights on this matching set.
- 269. **P—Grape & Cable Hatpin Holder. Very nice.**
- 270. Choice: BA—2 Big Butterfly Hatpins. Both are Super.
- 271. BA—Top 0' the Morning Hatpin. Sweet Treat.
- 272. B—Imperial Stipple Rays Creamer & Sugar. Base chip
- 273. Smoke—(Contemp.) IG Hobstar & Arches Toothpick.
- 274. Choice (Contemp.)—2 IG Windmill Tumblers. One Marigold and one Cameo Marigold.
- 275. M—Dugan Violet Basket without metal handle.
- 276. M—Imperial Twins 2 Pc. Fruit Bowl. Nice.
- 277. **B—N Poppy Show Plate. Absolutely stunning iridescence with super golds, purples & pinks.**
- 278. **P—Mlbg Fleur De Lis 10 1/2" ruffled Bowl with collar base. A real sweetie. Wow!**
- 279. **Electric A—Dugan Round Up 9" Plate with slight edge ruffling. Wonderful! Electric!! The best we've ever seen.**
- 280. **Electric B—N Good Luck 9" ruffled Bowl with Rib back. Another super special item with electric iridescence. Too good to let go! Absolutely Killer!**
- 281. G—Imperial Ripple 8" Vase w/ 3 3/4" base & 4" mouth.
- 282. P—N Three Fruits 8 1/2" ruffled Bowl with basketweave back and gold highlights.
- 283. B—N Leaf & Beads Rose Bowl. Sweet Example.
- 284. A—Fenton Feathered Serpent 10 1/2" ruffled Bowl. Couple pinheads on edge.
- 285. **Electric B—Dugan Fanciful 9" flat Plate. A very super duper multicolored plate with electric highlights. Double Wow!!**
- 286. Dk M—Imperial Rose 10" large size Bowl with 3 scroll feet. Super dark coloring and a great example.
- 287. P—Dugan Dogwood Spray 9" domed ftd Bowl. Gold.
- 288. **A—N Strawberry 8" PCE Bowl w/ basketweave exterior. Slight wear on fruit. Beautiful iridescence.**
- 289. **Electric P—N Strawberry 8" PCE Bowl with basketweave exterior. Wow! Super emerald green, purple & blue highlights. Great pair of bowls.**
- 290. M—Fenton Kittens 2 1/2" Toothpick, internal cracked.
- 291. G—Fenton Plume Panels 12" Vase. Couple of nicks.
- 292. M—Westmoreland Pearly Dots 9" Bowl w/ 3-in-1 edge.
- 293. G—N Wishbone 3 footed ruffled 9" Bowl. Couple rough spots on points.
- 294. P—Imperial Pansy 9" ruffled Bowl. Sweet example.
- 295. P—Dugan Cherries 8" CRE Bowl with 3 ball feet. Tightly crimped edge. Nice.
- 296. G—Fenton Blackberry Open Edge rfld Basket. Rough
- 297. M—Prism & Daisy Band Vase. Cracked.
- 298. Smoke—(Contemp.) IG Grape 10" rfld collar base Bowl
- 299. M—Smooth Rays 10" Bowl with 3-in-1 edge. Nice.
- 300. Dk M—(English) Block & Daisy 7" Bowl.
- 301. Dk M—Melon Rib Large Vase/Rose Bowl. Excellent coloring. It's 5 1/2" tall by 5 1/2" wide with a 4" mouth.
- 302. Lt M—Fans 5" Milk Pitcher. Rare and desirable.
- 303. G—N Beaded Cable ruffled 3 ftd Candy Dish. Nice.
- 304. P—Mlbg Peacock Tail Variant Compote. Base chip.
- 305. M—Brockwitz (Germany) Antigone Compote. Outstanding & rare example.
- 306. G—Fenton Small Rib tulip-shaped Spittoon Flared Whimsy Compote. Nice & very well iridized.







157



# Summer Carnival Glass Auction

Saturday, July 24, 1999 9:00 A.M.  
 Preview on Friday: 5-7 P.M. and Saturday 8-9 A.M.

|            |            |            |            |
|------------|------------|------------|------------|
| <p>138</p> | <p>190</p> | <p>109</p> | <p>50</p>  |
| <p>91</p>  | <p>129</p> | <p>130</p> | <p>147</p> |