

BURNS

AUCTION SERVICE

Lincoln Land Carnival Glass Convention Auction

Friday & Saturday
June 11 & 12, 1999

FRIDAY:

Preview 4:00 P.M.; Auction 6:30 P.M.

Lots 1-150

SATURDAY:

Preview 8:00 A.M.; Auction 9:30 A.M.

Lots 151-end

at the

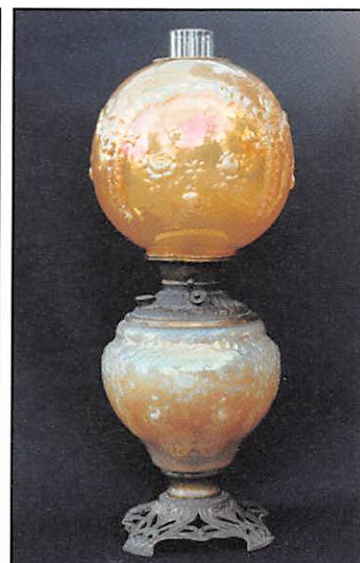
Midway Hotel – Airport

5105 S. Howell Avenue

Milwaukee, Wisconsin

(Located off Exit 318 of I-94, then take Howell Avenue Exit)

(414) 769-2100



Continuing our busy time of the year ... Now it's on to the Lincoln Land Carnival Glass Convention to be held once again at the Midway Hotel - Airport in Milwaukee, Wisconsin.

This year's auction will contain glass from the collection of Gordon and Charlotte Williams from California. We've had auctions for them in the past and every time there's a few additional "Goodies" that they have decided to release from their possession (like a Peacock at the Fountain Fruit Bowl) ... anyway, we hope you will enjoy the glass and we're sure there will be something there for everyone. Hope to see ya there!!

Oh ... by the way, every once in a while we may add a couple of our own "Goodies" to an auction—one item this time I call "Mickey Mouse"—you'll know what I mean when ya see it.

The Midway Hotel - Airport will once again host the event. It's located on South Howell Avenue off the Airport Exit 318 of I-94. The facilities are well known to those who frequent the Convention and for those who may be coming for the first time, you may call the motel direct at (414) 769-2100 or call Lincoln Land President, Rick Kojis at (414) 327-0321 for further information.

Mail bids, e-mail bids, phone bids, etc. are due by Tuesday, June 8, 1999. Local tax laws will be in effect so be sure to bring your resale number.

CHECK OUT BURNS AUCTION SERVICE ON THE WEB!

Visit our new Web site for information on upcoming auctions, complete auction listings and photos of auction highlights. You can e-mail your bids or requests for information.

<http://zeus.kspress.com/woodslnd/burnsauction> e-mail: brnzauctsv@aol.com

BURNS AUCTION SERVICE

Tom Burns
P.O. Box 608
Bath, New York 14810
(607) 776-7942

Bill Richards
44 Water St., Poland, OH 44514
(330) 757-2001
FAX (330)-757-4917

Bill Richards, III
2253 Country Lane
Poland, OH 44514
(330) 755-2620

Mail Bids honored under the following conditions.

1. No deposit required, Bidders will take full responsibility to honor any and all bids we execute for them. Payment in full plus postage and handling required after notification and before we ship any item to them.
2. Items are bid on in perfect condition with average or above average iridescence OR as listed in the brochures. Bids will not be carried out when damage on an item has been found during the auction. **PEOPLE PRESENT AT AUCTION ARE RESPONSIBLE FOR FINDING ANY PINHEADS, WEAR, SPOTTINESS, MANUFACTURER'S DEFECTS OR ANY OTHER MINOR FLAWS, ETC.**
3. Successful bidders will be notified by collect call from the auctioneer (**so be sure to include the phone number**).
4. Phone inquiries about the glass or any other questions are welcome.
5. If you have some other person at the auction bidding for you, they must pay for the item before taking it.
6. Any terms or conditions given the day of the auction will supersede any previously published information.
7. Mail, e-mail, fax and phone bids are due by Tuesday, June 8, 1999.

- ___ 1. Rooster Hatpin with Black Trim – Cobalt Blue (scarce item)
- ___ 2. Rooster Hatpin with Black Trim – Lt. Blue (scarce item)
- ___ 3. Rooster Hatpin with No Black Trim – Lt. Amyth. (scarce item)
- ___ 4. Rooster Hatpin with Black Trim – White (scarce item)
- ___ 5. **ROOSTER HATPIN WITH BLACK TRIM – RED (RARE ITEM IN THIS COLOR)**
- ___ 6. **6" TALL EUROPEAN CLASSIC ARTS TALL VASE OR TUMBLER – MARI. WITH GREEN WASH (VERY SCARCE AND VERY DESIRABLE; NICE STAIN)**
- ___ 7. European Classic Arts Covered Powder Jar – Mari. with Green Wash (rare item; not many found complete)
- ___ 8. Westmoreland Milady Figural Covered Powder Jar – Mari. (scarce; nice color)
- ___ 9. N Blackberry and Rays Stemmed 6 Ruffled Compote – Mari. (actually quite a rare pattern; satiny)
- ___ 10. **N SINGING BIRDS HANDLED MUG – AQUA OPAL. (RARE AND VERY DESIRABLE; GREAT IRID. AND OPAL.)**
- ___ 11. **N SINGING BIRDS HANDLED MUG – SAPPHIRE (AN EXTREMELY RARE BASE COLOR; HAVEN'T SEEN TOO MANY)**

- ___ 12. **N SINGING BIRDS HANDLED MUG – WHITE (A RARE AND EXTREMELY UNDERPRICED ITEM; NICE)**
- ___ 13. **N SINGING BIRDS HANDLED MUG – LAVENDER/ LT. AMYTH. (A RARE BASE COLOR WITH GREAT IRID.; NICE)**
- ___ 14. **N SINGING BIRDS HANDLED MUG – HOREHOUND (ANOTHER RARE BASE COLOR WITH GREAT IRID.)**
- ___ 15. **N SINGING BIRDS HANDLED MUG – ELEC. BLUE (SUPER COLOR AND IRID.; A GREAT EXAMPLE)**
- ___ 16. **N STIPPLED SINGING BIRD HANDLED MUG – GREEN (AN EXTREMELY RARE AND TOUGH ITEM TO FIND; NICE COLOR AND IRID.)**
- ___ 17. N Stippled Singing Bird Handled Mug – Dk. Mari. (super color and irid.; really nice)
- ___ 18. N Stippled Singing Bird Handled Mug – Custard/ Nutmeg (scarce item)
- ___ 19. **N GRAPE ARBOR 6 RUFFLED HAT SHAPE FROM TUMBLER – ICE GREEN (RARE AND DESIRABLE ITEM; GREAT COLOR AND IRID.)**

- ___ 20. **N GOOD LUCK RUFFLED BOWL WITH RIBBED EXT. – AQUA OPAL. (A SUPER EXAMPLE; PERFECT WITH GREAT IRID. AND OPAL.)**
- ___ 21. **N GOOD LUCK RUFFLED BOWL WITH RIBBED EXT. – ELEC. BLUE (SUPER EXAMPLE; GREAT COLOR AND IRID.)**
- ___ 22. **N GOOD LUCK RUFFLED BOWL WITH RIBBED EXT. – DK. PURP. (VERY SCARCE AND DESIRABLE; NICE IRID.)**
- ___ 23. N Good Luck Ruffled Bowl with Ribbed Ext. – Dk. Mari. (scarce; really nice color and irid.)
- ___ 24. **N GOOD LUCK RUFFLED BOWL WITH BASKETWEAVE EXT. – HOREHOUND (RARE AND VERY DIFFICULT TO FIND IN THIS BASE COLOR)**
- ___ 25. **N GOOD LUCK STIPPLED RUFFLED BOWL WITH RIBBED EXT. AND NARROW BASE – GREEN (RARE VARIATION; TOUGH TO FIND; NICE COLOR AND IRID.)**
- ___ 26. **N GOOD LUCK RUFFLED BOWL WITH BASKETWEAVE EXT. – GREEN (SCARCE; NICE SATINY FINISH)**
- ___ 27. N Good Luck Ruffled Bowl with Basketweave Ext. – Purp. (scarce; nice satiny finish)
- ___ 28. N Good Luck Ruffled Bowl with Basketweave Ext. – Mari. (scarce; nice color)
- ___ 29. **PHOENIX LACY DEWDROP TUMBLER – PEARLIZED MILK GLS. (VERY RARE ITEM; PERFECT WITH NICE OVERLAY)**
- ___ 30. **N WISTERIA TUMBLER – WHITE (RARE AND POPULAR ITEM; NICE COLOR WITH AVERAGE IRID.)**
- ___ 31. **N ORIENTAL POPPY TUMBLER – ICE GREEN (RARE AND VERY DESIRABLE; NICE BASE COLOR)**
- ___ 32. **N ORIENTAL POPPY 5 PC. TANKARD WATER SET – PURP. (RARE AND DESIRABLE SET THAT IS VERY ATTRACTIVE)**
- ___ 33. N Oriental Poppy Tumbler – Purp. (satiny finish)
- ___ 34. N Oriental Poppy Tankard Water Pitcher – Mari. (scarce; pretty nice color from top to bottom)
- ___ 35. **N G&C STIPPLED HANDLED BON BON WITH BASKETWEAVE EXT. – ICE BLUE OPAL. (EXTREMELY RARE ITEM; HAS A LACK OF INSIDE IRID.)**
- ___ 36. N G&C Handled Bon Bon with Basketweave Ext. – White (rare color; frosty with nice irid.)
- ___ 37. N G&C Handled Bon Bon with Basketweave Ext. – Elec. Blue (super; super color and irid.; a great example)
- ___ 38. N G&C Handled Bon Bon with Basketweave Ext. – Purp. (scarce; nice color and irid.)
- ___ 39. N G&C Handled Bon Bon with Basketweave Ext. – Dk. Mari. (nice color and irid.)
- ___ 39A. **N ROSE SHOW FLAT PLATE – DK. MARI.; RARE AND VERY DESIRABLE (DARK COLOR AND A BEAUTY)**
- ___ 39B. **N ROSE SHOW RUFFLED BOWL – ICE GREEN (RARE, DESIRABLE AND PERFECT W/ ABOVE AVERAGE IRID.)**
- ___ 40. **N NIPPON PLATE WITH BASKETWEAVE EXT. – GREEN (RARE ITEM; GREAT COLOR AND IRID.; NICE)**
- ___ 41. **N NIPPON PLATE WITH PLAIN EXT. – WHITE (EXTREMELY RARE COLOR FOR THIS ITEM; HAS A CHIPPED POINT)**
- ___ 42. N Nippon Bowl with Pie Crust Edge and Ribbed Ext. – Purp. (very scarce and desirable; satiny irid.)
- ___ 43. **N NIPPON BOWL WITH PIE CRUST EDGE AND RIBBED EXT. – ICE BLUE (VERY SCARCE ITEM; NICE COLOR AND IRID.)**
- ___ 44. **N NIPPON BOWL WITH PIE CRUST EDGE AND BASKETWEAVE EXT. – WHITE (VERY SCARCE ITEM; NICE COLOR AND IRID.)**
- ___ 45. N Nippon Bowl with Pie Crust Edge and Basketweave Ext. – Lt. Mari. (light in color but still desirable)
- ___ 46. N G&C Handled Punch Cup – Green (nice color)
- ___ 47. 6" N G&C Plate or Saucer – Green (scarce item; irid. a bit silvery)
- ___ 48. 6" N G&C 2-Sided Banana Dish with Basketweave Ext. – Lt. Mari. (scarce item)
- ___ 49. 6" N G&C Handgrip Plate with Basketweave Ext. – Amyth. (scarce; nice color and irid.)
- ___ 50. **N G&C VARIANT STIPPLED RUFFLED BOWL WITH RIBBED EXT. – SAPPHIRE (A REAL BEAUTY; PERFECT WITH GREAT IRID.)**
- ___ 51. N G&C Variant Stippled Bowl with Pie Crust Edge and Ribbed Ext. – Dk. Mari. (scarce; nice color and irid.)
- ___ 52. N G&C Variant Bowl with Pie Crust Edge and Basketweave Ext. – Green (nice color and irid.)
- ___ 53. N G&C Bowl with Pie Crust Edge and Basketweave Ext. – Purp. (nice color and irid.)
- ___ 54. N G&C Bowl with Pie Crust Edge and Basketweave Ext. – Mari. (nice color)
- ___ 55. **N G&C STIPPLED BANDED HATPIN HOLDER – DK. MARI. (RARE; DESIRABLE; NICE COLOR AND IRID.)**
- ___ 56. **(2) N G&C STIPPLED BANDED COLOGNE BOTTLES – MARI. (RARE; NICE COLOR; SELLING CHOICE)**
- ___ 57. N G&C Stippled Banded Oval Dresser Tray – Mari. (very scarce; nice color)
- ___ 58. N G&C Stippled Banded Oval Pin Tray – Mari. (very scarce; nice color)
- ___ 59. **N G&C STIPPLED COVERED POWDER JAR – DK. MARI. (QUIRE A RARE ITEM; NICE)**
- ___ 60. **N (OR DUGAN) G&C PERFUME BOTTLE AND STOPPER – MARI. (RARE AND DESIRABLE ITEM; NICE COLOR AND IRID.)**
- ___ 61. N G&C Pin Tray – Dk. Mari. (very scarce and desirable; nice)
- ___ 62. **N G&C BANDED FTD. HATPIN HOLDER – BLUE (VERY RARE AND DESIRABLE; HAS CHIP ON ONE FOOT)**
- ___ 63. N G&C Butter Base Only – Green (very scarce part)
- ___ 64. **N G&C STIPPLED COVERED BUTTER DISH – PURP. (NOW ... HOW MANY OF THESE HAVE YA SEEN?)**
- ___ 65. **N G&C HANDLED PUNCH CUP – AQUA OPAL. (VERY RARE AND VERY DESIRABLE; NICE ITEM)**
- ___ 66. **N G&C STIPPLED BOWL WITH PIE CRUST EDGE AND RIBBED EXT. – PURP. (RARE ITEM IN THIS COLOR; PRETTY NICE EXAMPLE)**
- ___ 67. **N G&C WHISKEY DECANTER AND STOPPER – PURP. (RARE AND DESIRABLE ITEM; NICE COLOR)**
- ___ 68. N G&C Shot Glass – Purp. (scarce and perfect; nice color and irid.)
- ___ 69. **N G&C WHISKEY DECANTER AND STOPPER – MARI. (SCARCE ITEM; PERFECT WITH NICE COLOR)**
- ___ 70. (6) N G&C Shot Glasses – Dk. Mari. (super examples; selling choice)
- ___ 71. **7-1/2" N G&C PLATE WITH BASKETWEAVE EXT. – PASTEL MARI. (SUPER EXAMPLE; NICE COLOR AND IRID.)**
- ___ 72. **N G&C COVERED SWEETMEAT COMPOTE – ODD LT. AMYTH./ HOREHOUND (EXTREMELY RARE BASE COLOR WITH SUPER IRID.)**
- ___ 73. N G&C Covered Sweetmeat Compote – Purp. (scarce; nice color and irid.)

- ___ 74. N G&C Breakfast Sugar & Creamer – Purp. (scarce set; nice color)
- ___ 75. **N G&C TANKARD WATER PITCHER – PURP. (SCARCE AND VERY DESIRABLE; NICE COLOR AND IRID.)**
- ___ 76. N G&C Tankard Tumbler – Purp. (scarce; nice irid.)
- ___ 77. **N G&C 7 PC. TANKARD WATER SET – MARI. (VERY SCARCE AND DESIRABLE SET TO FIND COMPLETE)**
- ___ 78. **N GREEK KEY BULBOUS HANDLED WATER PITCHER – GREEN (RARE AND DESIRABLE ITEM; NICE COLOR AND IRID.)**
- ___ 79. N Greek Key Tumbler – Green (scarce and very desirable; nice color)
- ___ 80. **N PEACOCK AT THE FOUNTAIN FTD. RUFFLED FRUIT BOWL – AQUA OPAL. (VERY RARE AND VERY DESIRABLE; GREAT OPAL. AND IRID.; SUPER DETAIL AND COLOR; WOW!!)**
- ___ 81. **N PEACOCK AT THE FOUNTAIN FTD. RUFFLED FRUIT BOWL – ELEC. BLUE (RARE AND VERY DESIRABLE; SUPER COLOR WITH GREAT IRID.)**
- ___ 82. N Peacock at the Fountain Ftd. Ruffled Fruit Bowl – Dk. Mari. (very scarce and becoming more popular)
- ___ 83. **N PEACOCK AT THE FOUNTAIN MASTER BERRY BOWL – ICE GREEN (AN EXTREMELY RARE COLOR FOR THIS ITEM; SUPER!)**
- ___ 84. **N PEACOCK AT THE FOUNTAIN MASTER BERRY BOWL – WHITE (A SCARCE ITEM WITH NICE IRID.; A REALLY ATTRACTIVE EXAMPLE)**
- ___ 85. **N PEACOCK AT THE FOUNTAIN MASTER BERRY BOWL – ELEC. BLUE (A SUPER, SUPER ITEM; GREAT IRID. AND DETAIL)**
- ___ 86. N Peacock at the Fountain 7 Pc. Berry Set – Purp. (very scarce set; nice color and irid.)
- ___ 87. N Peacock at the Fountain Master Berry Bowl – Mari. (great color and irid.)
- ___ 88. N Peacock at the Fountain ind. Berry Bowl – Ice Blue (scarce item if you're looking for one)
- ___ 89. **N PEACOCK AT THE FOUNTAIN COVERED SUGAR BOWL – GREEN (RARE AND VERY DESIRABLE ITEM; NICE)**
- ___ 90. **N PEACOCK AT THE FOUNTAIN HANDLED CREAMER – GREEN (ANOTHER RARE ITEM; REALLY TOUGH WITH NICE COLOR AND IRID.)**
- ___ 91. N Peacock at the Fountain Butter Lid Only – Green (tough part to find; where's the base?)
- ___ 92. **N PEACOCK AT THE FOUNTAIN MASTER BERRY BOWL – GREEN (RARE COLOR FOR THIS SHAPE; NICE IRID.)**
- ___ 93. N Peacock at the Fountain ind. Berry Bowl – Green (very scarce item to find; nice)
- ___ 94. **N PEACOCK AT THE FOUNTAIN TUMBLER – GREEN (RARE AND DESIRABLE; NICE IRID. AND DETAIL)**
- ___ 95. **N PEACOCK AT THE FOUNTAIN 6 PC. WATER SET – WHITE (VERY RARE SET; NICE IRID. AND REALLY TOUGH!)**
- ___ 95A. 5-5 1/2" Tall N Leaf Columns, Squatty Flared Vase – Purp. (really nice size w/ great detail, very scarce)
- ___ 96. **N DAISY AND DRAPE FTD. FLARED VASE – AQUA OPAL. (RARE WITH VERY NICE IRID. AND OPAL.)**
- ___ 97. **N DAISY AND DRAPE FTD. FLARED VASE – BLUE (RARE AND DESIRABLE ITEM; NICE AVERAGE IRID.)**
- ___ 98. **N DAISY AND DRAPE FTD. TURNED IN VASE – MARI. (VERY SCARCE AND VERY DESIRABLE; NICE)**
- ___ 99. N Daisy and Drape Ftd. Turned In Vase – White (nice and frosty; has nice irid.!)
- ___ 100. **N GRAPE ARBOR TANKARD HANDLED WATER PITCHER – BLUE (EXTREMELY RARE ITEM; NOT THAT MANY KNOWN; THIS EXAMPLE HAS SOME DAMAGE AT THE HANDLE)**
- ___ 101. **N GRAPE ARBOR TANKARD HANDLED WATER PITCHER – AMYTH. (VERY SCARCE AND DESIRABLE; NICE COLOR AND IRID.)**
- ___ 102. **N GRAPE ARBOR TANKARD HANDLED WATER PITCHER AND (1) TUMBLER – ICE BLUE (VERY RARE AND DESIRABLE; FROSTY AND REALLY NICE)**
- ___ 103. **N GRAPE ARBOR 7 PC. TANKARD WATER SET – WHITE (VERY SCARCE COMPLETE SET; FROSTY AND FINE)**
- ___ 104. N Grape Arbor Tankard Handled Water Pitcher – Mari. (very scarce and desirable; nice)
- ___ 105. **N PEACOCKS RUFFLED BOWL WITH RIBBED EXT. – ICE GREEN OPAL. (EXTREMELY RARE BASE COLOR; VERY DESIRABLE; GREAT IRID. AND WHERE THE HECK DO YA FIND THEM)**
- ___ 106. **N PEACOCKS RUFFLED BOWL WITH RIBBED EXT. – AQUA OPAL. (RARE AND POPULAR ITEM THAT HAS NICE OPAL. AND IRID.)**
- ___ 107. **N PEACOCKS STIPPLED BOWL WITH PIE CRUST EDGE AND RIBBED EXT. – DK. MARI. (VERY SCARCE AND VERY DESIRABLE; GREAT IRID.)**
- ___ 108. **N FRUITS AND FLOWERS STEMMED HANDLED BON BON – AQUA OPAL. (VERY DESIRABLE ITEM; NICE IRID. AND OPAL.)**
- ___ 109. **11" TALL N FOUR PILLAR RIBBED SWUNG VASE – POWDER BLUE OPAL. (RARE BASE COLOR; NEAT ITEM; MAY HAVE A SMALL CHECK IN BASE)**
- ___ 110. **10" TALL N TREE TRUNK STANDARD SWUNG VASE – AQUA OPAL. (RARE AND DESIRABLE; GETTING BETTER AND BETTER!)**
- ___ 111. **14"-15" TALL N THIN RIB MID-SIZE SWUNG VASE – VASELINE (RARE AND VERY DESIRABLE; HAS GREAT BASE COLOR)**
- ___ 112. 9"-10" Tall N Diamond Point Swung Vase – White (very scarce item with great irid.)
- ___ 113. 10"-10-1/2" Tall N Diamond Point Swung Vase – Dk. Purp. (really nice color and irid.)
- ___ 114. N G&C Plate with Plain Exterior – Purp. (scarce; nice color and irid.)
- ___ 115. **N G&C FTD. FERNERY – ICE BLUE (RARE AND VERY DESIRABLE; GREAT COLOR AND IRID.; NICE)**
- ___ 116. **N G&C FTD. FERNERY – WHITE (ANOTHER RARE ITEM; HAS REALLY NICE IRID.)**
- ___ 117. N G&C Plate with Plain Exterior – Green (scarce; nice color)
- ___ 118. **N G&C CANDLELAMP – PURP. (RARE ITEM; NICE SATINY FINISH AND WELL MATCHED)**
- ___ 119. **N G&C CANDLELAMP – MARI. (ANOTHER DESIRABLE ITEM; WELL MATCHED)**
- ___ 120. **N G&C CANDLELAMP – GREEN (AGAIN A SCARCE ITEM THAT IS WELL MATCHED)**
- ___ 121. N Three Fruits Bowl w/ Pie Crust Edge and Plain Ext. – Mari. (nice color and irid.)
- ___ 122. N Three Fruits Bowl w/ Pie Crust Edge and Basketweave Ext. – Green (nice satiny irid.)

- ____ 123. N Three Fruits Bowl w/ Pie Crust Edge and Plain Ext. – Purp. (nice color and irid.)
- ____ 124. **N THREE FRUITS MEDALLION FTD. RUFFLED BOWL W/ MEANDER EXT. – ELEC. BLUE (VERY SCARCE AND HAS NICE IRID; TOUGH)**
- ____ 125. **N STRAWBERRY BOWL W/ PIE CRUST EDGE AND PLAN EXT. – GREEN (ABSOLUTELY SUPER; SUPER IRID; A GREAT ITEM)**
- ____ 126. N Strawberry Stippled Bowl w/ Pie Crust Edge and Ribbed Ext. – Elec. Blue (Super Color and irid.; has chipped edge)
- ____ 127. N Wild Strawberry Handgrip Plate w/ Basketweave Ext. – Green (scarce; has nice color and irid.)
- ____ 128. **N RASPBERRY HANDLED WATER PITCHER – GREEN (SCARCE; NICE COLOR AND IRID.; ATTRACTIVE)**
- ____ 129. N Raspberry Handled Milk Pitcher – Green (scarce; nice color and irid.)
- ____ 130. **N GOOD LUCK BOWL W/ PIE CRUST EDGE AND RIBBED EXT. – ICE BLUE (VERY RARE AND DESIRABLE; HAS EXCESSIVE GLASS ON EDGE)**
- ____ 131. **N GOOD LUCK BOWL W/ PIE CRUST EDGE AND RIBBED EXT. – ELEC. BLUE (SUPER COLOR AND IRID.; REALLY NICE)**
- ____ 132. **N GOOD LUCK BOWL W/ PIE CRUST EDGE AND RIBBED EXT. – GREEN (RARE AND DESIRABLE; HAS MARI. OVERLAY)**
- ____ 133. **N GOOD LUCK STIPPLED BOWL W/ PIE CRUST EDGE AND RIBBED EXT. – ELEC. BLUE (SUPER COLOR AND GREAT IRID.; NICE)**
- ____ 134. **N GOOD LUCK STIPPLED BOWL W/ PIE CRUST EDGE AND RIBBED EXT. – DK. MARI. (REALLY DARK W/ NICE IRID.)**
- ____ 135. **N ACORN BURR 7 PC. WATER SET – GREEN (RARE AND DESIRABLE; A REALLY TOUGH SET TO FIND COMPLETE)**
- ____ 136. **N ACORN BURR 7 PC. WATER SET – DK. MARI. (ANOTHER RARE AND VERY DESIRABLE SET; REALLY NICE)**
- ____ 137. N Acorn Burr Master Berry Bowl – Dk. Mari. (scarce; nice color and irid.)
- ____ 138. N Acorn Burr ind. Round Berry Bowl – Dk. Mari. (great color)
- ____ 139. **N ACORN BURR 8 PC. PUNCH SET – PURP. (RARE SET; NICE COLOR AND VERY DESIRABLE)**
- ____ 140. N Acorn Burr Punch Bowl and Base – Ice Blue (rare item; this one has a glued flange)
- ____ 141. N Acorn Burr 8 Pc. Punch Set – White (rare set; has bruises at base of bowl)
- ____ 142. **N WIDE PANEL 4 LILY EPERGNE – GREEN (RARE AND ALWAYS DESIRABLE; A NICE EXAMPLE)**
- ____ 143. **N LEAF AND BEADS FTD. FLARED NUT BOWL – AQUA OPAL. (A VERY RARE SHAPE FOR THIS ITEM; NICE OVERLAY AND IRID.)**
- ____ 143A. **N ROUND BUSHEL BASKET – PEARLIZED CUSTARD (RARE AND DESIRABLE NOVELTY; SUPER IRID. W/ NICE NUTMEG FINISH)**
- ____ 144. **N HEARTS AND FLOWERS PLATE WITH RIBBED EXT. – LT. OR PASTEL MARI. (SCARCE AND DESIRABLE; HAS LIGHT IRID.)**
- ____ 145. N Dandelion Tankard Handled Water Pitcher – Dk. Mari. (super color and irid.; a great example)
- ____ 146. **N ORIENTAL POPPY TANKARD HANDLED WATER PITCHER – WHITE (RARE AND DESIRABLE; NICE AND FROSTY!)**
- ____ 147. **18" TALL N TREE TRUNK SWUNG FUNERAL VASE – AMYTH. (RARE; DESIRABLE; HAS A NICE SATINY FINISH)**
- ____ 148. Top o' the Walk Hatpin – Dark (scarce)
- ____ 149. Big Butterfly (or scarab) Hatpin – Dark (scarce)
- ____ 150. Flying Bat Hatpin – Dark (very scarce)

START OF SECOND SESSION

- ____ 151. Spider Hatpin – Crystal Light Green
- ____ 152. Honeybee and Honeycomb Hatpin – Crystal Cobalt Blue
- ____ 153.– 159. Miscellaneous Hatpins – Odd Colors
- ____ 160. **9-1/2" M'BURG 5 POINTED MANY STARS 6 RUFFLED BOWL – AMYTH. (RARE AND DESIRABLE; RADIUM AND REALLY NICE!)**
- ____ 161. **8" x 8" M'BURG STRAWBERRY WREATH 4 SIDED SQUARE BOWL – AMYTH. (RARE SHAPE AND VERY DESIRABLE; SUPER RADIUM)**
- ____ 162. M'burg Hanging Cherries Handled Creamer – Amyth. (scarce; satiny)
- ____ 163. M'burg Hanging Cherries Handled Spooner – Amyth. (scarce, satiny)
- ____ 164. M'burg Hanging Cherries Sugar Lid – Amyth. (tough part)
- ____ 165. **M'BURG POPPY STEMMED FLARED COMPOTE – GREEN (RARE AND DESIRABLE WITH ABOVE AVERAGE IRID.)**
- ____ 166. 9-1/2" M'burg Rosliand 6 Ruffled Bowl – Green (scarce; nice color and finish)
- ____ 167. 9-1/2" M'burg Rosliand 6 Ruffled Bowl – Amyth. (scarce; nice color and finish)
- ____ 168. 9-1/2" M'burg Rosliand 6 Ruffled Bowl – Dk. Mari. (really nice color; attractive)
- ____ 169. 9-1/2" M'burg Rays and Ribbons Bowl with 3-in-1 Edge – Mari. (scarce; nice)
- ____ 170. **9"–9-1/2" TALL M'BURG SWIRL HOBNAIL SWUNG VASE – AMYTH. (VERY SCARCE; NICE COLOR AND IRID.)**
- ____ 171. **M'BURG SWIRL HOBNAIL ROSE BOWL – AMYTH. (VERY SCARCE; NICE)**
- ____ 172. M'burg Swirl Hobnail Rose Bowl – Dk. Mari. (really nice color and irid.)
- ____ 173. M'burg Boutonniere Stemmed 6 Ruffled Compote – Amyth. (very scarce; nice satiny irid.)
- ____ 174. M'burg Peacock Tail Variant Stemmed 6 Ruffled Compote – Green (scarce; nice)
- ____ 175. 9-1/2" M'burg Peacock at the Urn Lg. 6 Ruffled Bowl – Mari. (scarce; nice satiny finish)
- ____ 176. **CAMBRIDGE INVERTED THISTLE WHIMSEY 2 SIDED 3 FTD. BOWL – GREEN (EXTREMELY RARE ITEM; SUPER COLOR AND RADIUM)**
- ____ 177. 6" Imperial Grape Flat Plate – Lime Green (odd tint)
- ____ 178. 6" Imperial Grape Flat Plate – Dk. Mari. (nice color)
- ____ 179. **IMPERIAL ROBIN TUMBLER – SMOKE (EXTREMELY RARE COLOR FOR THIS ITEM)**
- ____ 180. **IMPERIAL POPPY SHOW VASE – SMOKE (EXTREMELY RARE ITEM; PERFECT WITH GREAT COLOR AND IRID.)**
- ____ 180A. **IMPERIAL WINDMILL MID-SIZE HANDLED WATER PITCHER – SMOKE (RARE AND REALLY TOUGH TO FIND IN THIS SIZE AND COLOR)**

- ___ 181. **IMPERIAL CORN BOTTLE – DK. SMOKE (RARE AND DESIRABLE; GREAT COLOR AND IRID.)**
- ___ 182. **IMPERIAL CORN BOTTLE – SMOKE/ MARI. OVERLAY (ANOTHER ATTRACTIVE ITEM; PERFECT WITH NICE COLOR)**
- ___ 183. 4-1/2" Tall Imperial Miniature Morning Glory Swung Vase – Purp. (cute; nice color and size)
- ___ 184. 6-1/2" Tall Imperial Miniature Morning Glory Swung Vase – Purp. (scarce; nice color and irid.)
- ___ 185. **10" IMPERIAL HATTIE CHOP PLATE – PURP. (RARE AND VERY DESIRABLE; GREAT IRID.)**
- ___ 185A. **IMPERIAL TIGER LILY HANDLED WATER PITCHER – PURP. (RARE AND ABSOLUTELY A BEAUT; SUPER ITEM; HAS A CHIP ON INSIDE OF TOP EDGE NEAR SPOUT)**
- ___ 185B. **IMPERIAL TIGER LILY TUMBLERS – PURP. (SUPER EXAMPLES; SELLING CHOICE; BOTH A BIT DIFFERENT)**
- ___ 186. **11" IMPERIAL HEAVY GRAPE CHOP PLATE – PURP. (ANOTHER NICE IMPERIAL EXAMPLE; GREAT COLOR)**
- ___ 187. 11" Imperial Heavy Grape Chop Plate – White (super frosty and desirable; has manuf. drilled hole)
- ___ 188. 11" Imperial Heavy Grape Chop Plate – Dk. Mari. (super color and very desirable)
- ___ 189. 7-3/4" Imperial Acanthus Deep Round Bowl – Purp. (super color and irid.)
- ___ 190. **IMPERIAL GRAPE HANDLED WATER PITCHER – PURP. (ANOTHER SUPER ITEM; HAS GREAT COLOR AND IRID.)**
- ___ 191. (3) Imperial Grape Tumblers – Purp. (selling choice; nice irid.)
- ___ 192. Imperial Grape Wine Decanter and Stopper – Purp. (super color and irid.; really nice)
- ___ 193. (3) Imperial Grape Stemmed Wine Glasses – Purp. (selling choice; nice color and irid.)
- ___ 194. 9" Imperial Pansy Low 8 Ruffled Bowl – Purp. (nice color and irid.)
- ___ 195. **10" IMPERIAL CHRYSANTHEMUM CHOP PLATE, NOT SIGNED – WHITE (EXTREMELY RARE ITEM; PERFECT WITH NICE IRID.; NOT MANY AROUND)**
- ___ 196. 7-1/2" Imperial Heavy Grape Flat Plate – Purp. (super color and irid.; really nice example)
- ___ 197. 7-1/2" Imperial Heavy Grape Flat Plate – Dk. Mari. (super color and irid.)
- ___ 198. 9-1/2" Imperial Embossed Scroll Master Berry Bowl with File Ext. – Smoke (very rare color for this item; nice irid.)
- ___ 199. 9" Imperial Grape Low Ruffled Plate – Smoke (scarce; nice irid.)
- ___ 200. **9" IMPERIAL GRAPE LOW RUFFLED BOWL – MARI./ OPAL. (RARE VARIATION; HAS OPAL STREAKS IN BASE)**
- ___ 201. **10" TALL IMPERIAL RIPPLE STANDARD SWUNG VASE – TEAL (VERY DESIRABLE COLOR; NICE IRID.)**
- ___ 202. 10"–11" Tall Imperial Ripple Mid-Size Squatty Swung Base with Spout – Purp. (unusual and attractive; nice irid.)
- ___ 203. 11-1/2" Tall Imperial Ripple Swung Vase – Purp. (scarce; really nice irid.)
- ___ 204. 8" Tall Imperial Ripple Swung Vase – Amber (scarce base color; really nice)
- ___ 205. **9" IMPERIAL EMBOSSED SCROLL FLAT PLATE – PURP. (SUPER, SUPER EXAMPLE; GREAT COLOR AND IRID.)**
- ___ 206. Imperial Grape Stemmed Goblet – Purp. (scarce item; nice)
- ___ 207. Imperial Grape Stemmed Goblet – Helios Green (scarce)
- ___ 208. Imperial Grape Stemmed Goblet – Dk. Mari. (scarce)
- ___ 209. **9"–10" U.S. GLASS COSMOS AND CANE LG. TRI-CORNERED BOWL – MARI. (VERY RARE SHAPE FOR THIS ITEM; NICE)**
- ___ 209A. **EUROPEAN MARY GREGORY STYLE 6 PC. CORDIAL SET – LT. MARI./ ENAMELED (A REALLY CUTE SET; SHOWS A LITTLE BOY WATERING THE GRASS; A RARE AND UNUSUAL SET)**
- ___ 210. **EUROPEAN HEAVY VINE 2 PC. TUMBLE UP – DK. MARI. (RARE AND VERY DESIRABLE; DARK COLOR AND NICE)**
- ___ 211. European Heavy Vine Atomizer, no bulb – Mari. (rare item; nice color and detail)
- ___ 212. European Heavy Vine Cologne Bottle and Stopper – Mari. (rare and desirable; nice color and detail)
- ___ 213. European Heavy Vine Smaller Cologne Bottle and Stopper – Mari. (scarce size; nice irid.)
- ___ 214. European Heavy Vine Perfume Bottle and Stopper – Mari. (very scarce; nice color and irid.)
- ___ 215. European Heavy Vine Ring Tree – Mari. (very scarce item; perfect with nice color)
- ___ 216. European Heavy Vine Covered Powder Jar – Mari. (scarce item; nice)
- ___ 217. European Heavy Vine Small Covered Dresser Jar – Mari. (another scarce item; has small chip)
- ___ 218. European Heavy Vine Oblong Pin Tray – Mari. (scarce shape; nice color and irid.)
- ___ 219. 7" Dugan Bellflower 6 Ruffled Bowl with Tight Crimped Edge – Purp. (scarce; nice)
- ___ 220. **DUGAN DAHLIA 5 PC. FTD. WATER SET – WHITE WITH BLUE STAIN (VERY RARE AND DESIRABLE SET; NICE BLUE STAIN)**
- ___ 221. **DUGAN GOD AND HOME TUMBLER – BLUE (VERY SCARCE; NICE COLOR AND DETAIL)**
- ___ 222. Dugan Pony 6 Ruffled Bowl – Amyth. (scarce color; nice satiny finish)
- ___ 223. Dugan Pony 6 Ruffled Bowl – Mari. (nice color)
- ___ 224. **DUGAN PASTEL SWAN – MARI. WITH OPAL. HEAD (SCARCE ITEM WITH OPAL. ON TOP OF HEAD)**
- ___ 225. **DUGAN GRAPEVINE LATTICE TANKARD WATER PITCHER – WHITE (EXTREMELY RARE AND DESIRABLE; NICE FROSTY FINISH AND IRID.)**
- ___ 226. Dugan Grapevine Lattice Tumbler – White (very scarce; nice frosty color and irid.)
- ___ 227. Dugan Constellation Stemmed Ruffled Compote – White (scarce; nice and frosty example)
- ___ 228. Dugan Question Mark/ Ga. Peach and Puzzle Stemmed Flat Plate – White (very scarce shape; nice color and irid.)
- ___ 229. 9" Dugan Apple Blossom Twigs Low 10 Ruffled Bowl – White (really nice color and irid.; attractive)
- ___ 230. **12" DUGAN PERSIAN GARDEN CHOP PLATE WITH BASKETWEAVE EXT. – WHITE (VERY RARE AND VERY DESIRABLE; PERFECT WITH GREAT IRID.)**
- ___ 231. **12" DUGAN PERSIAN GARDEN CHOP PLATE WITH BASKETWEAVE EXT. – AMYTH. (ANOTHER RARE ITEM; HAS SMALL CHIP ON ONE POINT)**
- ___ 231A. **DUGAN ROUND UP LOW RUFFLED PLATE – AMYTH. (SUPER ITEM W/ BRIGHT YELLOW HIGHLIGHTS; NICE)**
- ___ 232. 6-3/4" Dugan Persian Garden Plate with Pool of Pearls Ext. – White (scarce; nice color and irid.)
- ___ 233. Dugan Persian Garden 2 Pc. Ruffled Fruit Bowl and Base – White (scarce item; rim of base has been ground)

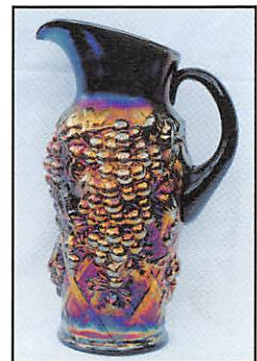
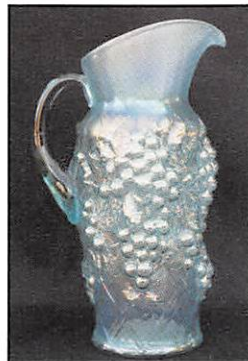
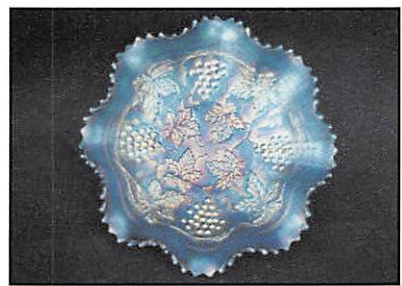
- ____ 234. Dugan Persian Garden Ruffled Fruit Bowl Base Only – Purp. (super, super example; great irid.)
- ____ 235. **DUGAN PERSIAN GARDEN RUFFLED FRUIT BOWL TOP ONLY – PURP. (ANOTHER SUPER EXAMPLE; SORTA RADIUM FINISH)**
- ____ 235A. **DUGAN MANY FRUITS 8 PC. ROUND PUNCH SET – PURP. (RARE SET AND A BEAUTY! CUPS ARE MORE AMYTH.)**
- ____ 236. Dugan Honeycomb Rose Bowl – P. Opal. (scarce, nice color and opal.)
- ____ 236A. 4" Tall x 6-1/2-7" Dia. Dugan Thin Rib Squatty Flared Vase – P. Opal (nice squatty size w/ nice irid.)
- ____ 237. Dugan Interior Swirl Tri-Cornered Pinched In Rose Bowl – P. Opal. (scarce; nice color and opal.)
- ____ 238. Dugan Wreath of Roses Bowl with Metal Base – Mari. (odd item with metal base)
- ____ 239. Dugan Puzzle/ Sheath of Wheat 2 Sided Handled Bon Bon – White (scarce; nice and frosty)
- ____ 240. **10-1/2" DUGAN PODS AND POSIES FLAT CHOP PLATE – P. OPAL. (RARE AND DESIRABLE; NICE OPAL. AND MARI. OVERLAY)**
- ____ 241. (4) 6-1/2" Dugan Pods and Posies Flat Plates – P. Opal. (flat with great opal.; selling choice)
- ____ 242. Dugan Pods and Posies 5 Pc. Ruffled Berry Set – P. Opal. (scarce set with nice color and opal.)
- ____ 243. Dugan Daisy and Plume Oblong Ruffled Ftd. Candy Dish – P. Opal. (scarce item with nice opal.)
- ____ 244. **DUGAN DAHLIA FTD. COVERED BUTTER DISH – WHITE WITH GOLD TRIM (RARE AND UNDERPRICED ITEM; NICE COLOR AND IRID.)**
- ____ 245. **11-1/4" DUGAN PERSIAN GARDEN LG. ICE CREAM BOWL – P. OPAL. (RARE AND DESIRABLE ITEM; NICE COLOR AND OPAL.)**
- ____ 246. Fenton Vintage Grape Small Size Single Lily Epergne – Amyth. (scarce; nice color)
- ____ 247. Fenton Pond Lily 2 Handled 4 Sided Bon Bon – White (scarce; nice)
- ____ 248. Fenton Orange Tree Ftd. Hatpin Holder – Blue (very scarce; nice color and irid.)
- ____ 249. Fenton Orange Tree Covered Powder Jar – Blue (scarce; nice color and irid.)
- ____ 250. **FENTON ORANGE TREE SCROLL 7 PC. TANKARD WATER SET – BLUE (EXTREMELY RARE AND VERY DESIRABLE SET; TOUGH!)**
- ____ 250A. **FENTON ORANGE TREE ORCHARD WHIMSEY 2 HANDLED VASE MADE FROM WATER PITCHER MOLD – MARI. (EXTREMELY RARE ONE-OF-A-KIND, AS WELL AS WE KNOW; HAS TINY DING OFF ONE ORANGE AND MANUF. CHECK IN THE BODY; PROBABLY HAS BEEN THERE SINCE BIRTH)**
- ____ 251. **FENTON ORANGE TREE 8 PC. PUNCH SET – WHITE (RARE AND DESIRABLE; PERFECT WITH NICE IRID.)**
- ____ 252. Fenton Persian Medallion Rose Bowl – White (scarce; nice and frosty)
- ____ 253. **FENTON PERSIAN MEDALLION SMALL STEMMED 6 RUFFLED COMPOTE – WHITE (VERY RARE SHAPE AND COLOR FOR THIS PATTERN)**
- ____ 254. Fenton Captive Rose Stemmed 6 Ruffled Compote – White (another scarce color; has nice irid.)
- ____ 255. **9" FENTON PEACOCK AND GRAPE 8 RUFFLED BOWL – RED (RARE AND DESIRABLE; NICE RED COLOR AND IRID.; VERY ATTRACTIVE)**
- ____ 255A. **6-1/2-7" FENTON G&C LOW ICE CREAM SHAPED BOWL – RED (NICE COLOR; SATIN; HAS TINY CHIP NEAR MOLD LINE)**
- ____ 256. **9" FENTON DRAGON AND LOTUS 8 RUFFLED BOWL – RED (RARE AND DESIRABLE; NICE COLOR; IRID. IS A BIT SPOTTY)**
- ____ 257. **9" FENTON HOLLY 8 RUFFLED BOWL – RED (RARE AND DESIRABLE; NICE COLOR AND IRID.)**
- ____ 258. Fenton Orange Tree Standard Sized Handled Mug – Red (very scarce; irid. is 1/2 spotty)
- ____ 259. **10" FENTON LITTLE FLOWERS LG. 8 RUFFLED BOWL – RED/ AMBERINA (RARE AND DESIRABLE; NICE COLOR AND SATINY FINISH)**
- ____ 259A. **8-1/2" FENTON CONCORD GRAPE BOWL W/ 3-IN-1 EDGE – GREEN (VERY SCARCE; HAS GOLDISH HIGHLIGHTS)**
- ____ 260. **CONSOLIDATED ROSES AND RUFFLES GWW LAMP – MARI. (RARE AND VERY DESIRABLE; HAS SMALL SPIDER IN TOP)**
- ____ 261. Fenton Lg. Stretch Interior Diamond Quilted 2 Sided Basket with Metal Handle – Ice Green (quite a rare item; perfect with nice irid.)
- ____ 261A. Fenton Stretch Ftd. ind. Nut Cup – Vaseline (scarce w/ great color)
- ____ 261B. Fenton Stretch Ftd. ind. Nut Cup – Celeste Blue (scarce w/ nice color)
- ____ 262. **FENTON HORSEHEAD MEDALLION FTD. ROSE BOWL – VASELINE (RARE BASE COLOR; NICE COLOR AND IRID.)**
- ____ 262A. **FENTON HORSEHEAD MEDALLION FTD. RUFFLED BOWL – AMYTH. (VERY RARE COLOR W/ ATTRACTIVE HIGHLIGHTS)**
- ____ 263. **FENTON MIRRORED LOTUS ROSE BOWL – WHITE (VERY RARE AND VERY DESIRABLE; NICE COLOR)**
- ____ 264. Fenton Two Flowers Spatula Ftd. Rose Bowl – Elec. Blue (super example of this item; great irid.)
- ____ 265. **FENTON MILADY TANKARD HANDLED WATER PITCHER – DK. DK. MARI. (SUPER, SUPER ITEM; HAS TO BE ONE OF THE BEST!)**
- ____ 266. **FENTON FLUFFY PEACOCK BULBOUS HANDLED WATER PITCHER – AMYTH. (RARE ITEM; GREAT DETAIL AND IRID.; NICE!)**
- ____ 267. **FENTON FLUFFY PEACOCK BULBOUS HANDLED WATER PITCHER – DK. MARI. (ANOTHER RARE ITEM WITH NICE COLOR AND IRID.)**
- ____ 268. **18-1/2" TALL FENTON RUSTIC SWUNG FUNERAL VASE – AMYTH. (RARE AND DESIRABLE; NICE COLOR AND IRID.)**
- ____ 269. **17" TALL FENTON RUSTIC SWUNG FUNERAL VASE – GREEN (RARE AND DESIRABLE; NICE COLOR AND IRID.)**
- ____ 270. **8-1/2" TALL FENTON DIAMOND POINT COLUMNS AND BANDS SQUATTY SWUNG VASE – AMYTH. (NEVER SEEN THIS PATTERN BEFORE; REALLY DIFFERENT)**

FOR THE RESULTS OF THIS OR ANY BURNS AUCTION SERVICE AUCTION SEND A S.A.S.E. AND \$3.00 (INCLUDE NAME OR DATE OF AUCTION) TO:

EMMA TILTON
P.O. BOX 273
GNADENHUTTEN, OH 44629

VISIT US ON THE WEB!

<http://www.woodsland.com/burnsauction>
for pictures, complete listings and upcoming auctions



BURNS

AUCTION SERVICE

P.O. BOX 608 • BATH, NEW YORK 14810

Lincoln Land Carnival Glass Convention Auction

Friday & Saturday June 11 & 12, 1999

FRIDAY: Preview 4:00 P.M.; Auction 6:30 P.M.
Lots 1-150

SATURDAY: Preview 8:00 A.M.; Auction 9:30 A.M.
Lots 151-end

First Class Mail
U.S. Postage
PAID
Eugene, Oregon
Permit No. 305

