

BURNS

AUCTION SERVICE

Keystone Carnival Glass Club Convention Auction

Friday & Saturday
May 28 & 29, 1999

Friday:

Preview 4:00 P.M.; Auction 6:30 P.M.

Lots 1-150

Saturday:

Preview 8:00 A.M.; Auction 9:00 A.M.

Lots 151-end

at the

Holiday Inn – Monroeville

2750 Mosside Boulevard (Route 48)

Monroeville, Pennsylvania

*(Just off Exit 6 of the Pennsylvania Turnpike, west on
Business 22 to State Route 48, then left.)*

(412) 372-1022 Fax: (412) 373-4065

PA LICENSE #AU002580-L

Boy...do I like Summertime! We are again here to present you the Annual Keystone Carnival Glass Convention Auction.

This year's glass is from two Northwest collections, both of which had an emphasis on Fenton Glass. There is a great diversified selection, with rarities and a number of items with great color and iridescence. There is definitely something for everyone; - hope you will all show up for the activities.

The Holiday Inn - Monroeville will host the event. The activities will run from Wednesday through Saturday with the auction on Friday evening and Saturday morning. You can call the motel direct at 412-372-1022 for reservations, or call Club President Don Royle at 610-777-8126.

Mail bids are due by Tuesday, May 25, 1999.

CHECK OUT BURNS AUCTION SERVICE ON THE WEB!

Visit our new Web site for information on upcoming auctions, complete auction listings and photos of auction highlights. You can e-mail your bids or requests for information.

<http://zeus.kspress.com/woodslnd/burnsauction> e-mail: brnzauctsv@aol.com

Burns Auction Service

Tom Burns
P.O. Box 608
Bath, New York 14810
(607) 776-7942

Bill Richards
44 Water St., Poland, OH 44514
(330) 757-2001
FAX (330)-757-4917

Bill Richards, III
2253 Country Lane
Poland, OH 44514
(330) 755-2620

Mail Bids honored under the following conditions.

1. No deposit required, Bidders will take full responsibility to honor any and all bids we execute for them. Payment in full plus postage and handling required after notification and before we ship any item to them.
2. Items are bid on in perfect condition with average or above average iridescence OR as listed in the brochures. Bids will not be carried out when damage on an item has been found during the auction. **PEOPLE PRESENT AT AUCTION ARE RESPONSIBLE FOR FINDING ANY PINHEADS, WEAR, SPOTTINESS, MANUFACTURER'S DEFECTS OR ANY OTHER MINOR FLAWS, ETC.**
3. Successful bidders will be notified by collect call from the auctioneer (**so be sure to include the phone number**).
4. Phone inquiries about the glass or any other questions are welcome.
5. If you have some other person at the auction bidding for you, they must pay for the item before taking it.
6. Any terms or conditions given the day of the auction will supersede any previously published information.
7. Mail, Email, fax and phone bids are due by Tuesday, May 25, 1999.

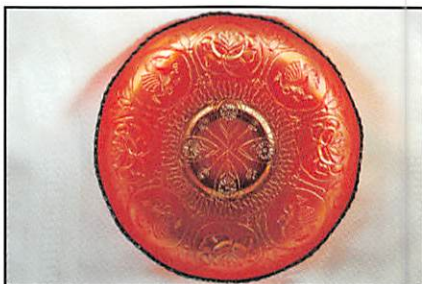
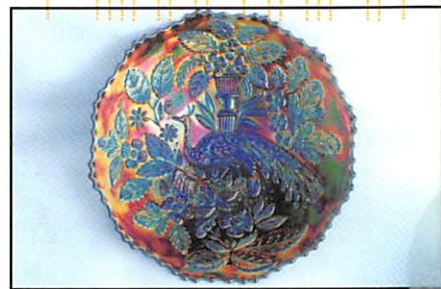
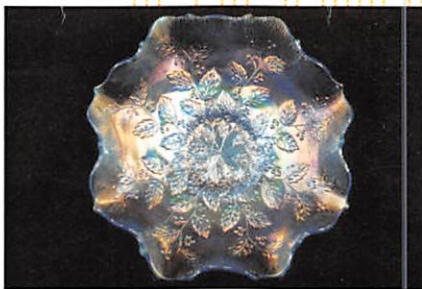
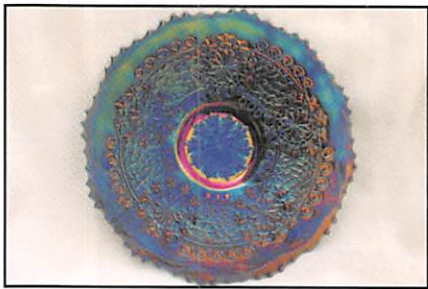
- | | | | |
|-----------|---|-----------|---|
| _____ 1. | St. Clair S Repeat Toothpick Holder, Whimsey - Blue (flares out) | _____ 16. | N Fine Cut and Roses Ftd. Ruffled Rose Bowl - Emerald Green (super example; perfect with great color and irid.) |
| _____ 2. | Westmoreland Miniature Handled Basket Salt Dip with Enam. Decor. - Lt. Mari. (scarce; nice floral decoration) | _____ 17. | N Drapery Rose Bowl - Aqua Opal. (great example with really nice opal and overlay) |
| _____ 3. | Duncan Miller Block Patterned Rose Bowl with Lid - Mari. (never seen another; nice color and irid.) | _____ 18. | N Beaded Cable Ftd. Ruffled Rose Bowl - Aqua Opal. (light base glass color with super irid.) |
| _____ 4. | U.S. Glass Paneled Thistle Stemmed Jelly Compote - Lt. Mari. (another unusual item; I've not seen too many) | _____ 19. | N Leaf and Beads Ftd. Rose Bowl - Aqua Opal. (rare; always desirable; nice mari. overlay) |
| _____ 5. | 3" x 3-1/2" MAKER (?) COVERED HEN ON THE NEST MINIATURE - MARI. (RARE AND DESIRABLE; NOT TOO MANY KNOWN) | _____ 20. | N POPPY SHOW FLAT PLATE - AMYTH./PUR. (EXTREMELY RARE ITEM TO FIND; GREAT IRID.) |
| _____ 6. | Maker (?) Pastel Swan - Lt. Mari. (not your normal pastel swan; different) | _____ 21. | N ROSE SHOW FLARED PLATE - MARI. (RARE AND DESIRABLE; SUPER IRID.; ATTRACTIVE) |
| _____ 7. | Smith Glass Co. Large Figural Swan - Lt. Mari. (another item I haven't seen before) | _____ 22. | N FRUITS AND FLOWERS 2-HANDLED STEMMED BON BON - AQUA OPAL. (RARE AND DESIRABLE; OPAL. ON EDGE WITH MARI. OVERLAY) |
| _____ 8. | N G&C Cologne Bottle, Base Only - Mari. (cracked at base) | _____ 23. | (2) N Peacock at the Fountain Ind. Berry Bowls - Ice Blue (very scarce; nice-selling choice) |
| _____ 9. | N Wishbone Tumbler - Green (very scarce; nice sample with mari. overlay) | _____ 24. | N PEACOCK AT THE URN IND. ICE CREAM BOWL - ICE GREEN (SUPER EXAMPLE; TOUGH TO FIND NICE EXAMPLES) |
| _____ 10. | 14" - 15" TALL 'N THIN RIB MID-SIZE SWUNG VASE - SAPPHIRE (VERY RARE AND VERY DESIRABLE GREAT COLOR) | _____ 25. | N PEACOCK PLATE WITH RIBBED EXTERIOR - BLUE (RARE AND DESIRABLE; NICE RED AND YELLOW IRID.) |
| _____ 11. | 10" Tall 'N Thin Rib Standard Swung Vase - Olive Green (nice color and irid.) | _____ 26. | N PEACOCK PLATE WITH RIBBED EXTERIOR - PUR. (VERY SCARE; NICE MULTI-COLORED IRID.) |
| _____ 12. | N ROUND-HANDLED BUSHEL BASKET - AQUA OPAL. (VERY SCARCE; DESIRABLE; HAS LIGHTER OPAL. AND MARI. OVERLAY) | _____ 27. | N PEACOCK PLATE WITH RIBBED EXTERIOR. - DK. MARI. (VERY SCARCE; NICE COLOR AND IRID.) |
| _____ 13. | N ROUND-HANDLED BUSHEL BASKET - ICE GREEN (EXCELLENT EXAMPLE; GREAT IRID.; NICE!) | _____ 28. | N Peacock Plate with Plain Exterior - White (scarce; bright irid; has straw marks) |
| _____ 14. | N ROUND-HANDLED BUSHEL BASKET - PASTEL MARI. (ABSOLUTELY SUPER EXAMPLE; FANTASTIC IRID.) | _____ 29. | N Peacock at the Urn Ind. Ice Cream Bowl - Mari. (nice dark color and irid.) |
| _____ 15. | N 8-SIDED HANDLED BUSHEL BASKET - ICE BLUE (RARE AND DESIRABLE; NICE COLOR AND IRID.) | | |

30. N CORN VASE WITH STALK BASE – POP BOTTLE AQUA (RARE BASE GLASS COLOR; UNUSUAL; PERFECT WITH NICE IRID.)
31. 6-1/2" – 7" TALL N DRAPERY SWUNG VASE – ICE BLUE (RARE AND DESIRABLE EXAMPLE; PERFECT)
32. N Hearts and Flowers Stemmed Ruffled Compote with Plain Exterior – White (scarce; nice average color and irid.)
33. N Fine Cut and Roses Ftd. Ruffled Candy Dish with Fancy Interior – White (rough feet)
34. N WISHBONE EPERGNE, LILY ONLY – ICE BLUE (VERY RARE PART; HAS (2) CHIPS ON TOP EDGE)
35. N WISHBONE BOWL WITH PIE CRUST EDGE AND BASKETWEAVE EXTERIOR – PUR. (VERY SCARCE AND VERY DESIRABLE; RED AND BLUE HIGHLIGHTS)
36. N Harvest Poppy Stemmed Ruffled Compote – Pur. (very rare pattern; irid. is silvery)
37. N GOOD LUCK 8 RUFFLED BOWL WITH RIBBED EXTERIOR – PASTEL MARI. (SUPER IRID.; A VERY ATTRACTIVE ITEM)
38. N G&C Banded Ftd. Banana Boat – Pur. (rare item; has chip on inside edge)
39. N G&C VARIANT FLAT PLATE WITH PLAIN EXTERIOR – PUR. (SUPER, SUPER EXAMPLE; GREAT IRID.)
40. N G&C BANDED FTD. BANANA BOAT – PEARLIZED CUSTARD/NUTMEG (VERY FINE EXAMPLE OF A VERY SCARCE ITEM)
41. N Grape and Gothic Arches Covered Butter Dish – Pearlized Custard/Gold (rare and desirable, pretty good gold decor)
42. N Grape and Gothic Arches Spooner – Pearlized Custard/Gold (scarce item; perfect; gold worn)
43. N Grape and Gothic Arches Master Berry Bowl – Pearlized Custard/Gold (rare and desirable; nice gold trim)
44. N G&C Covered Sweetmeat Compote – Pur. (scarce; lid is silvery; has chip under base)
45. **M'BURG PEACOCK AT THE URN GIANT STEMMED COMPOTE – AMYTH. (VERY RARE AND VERY DESIRABLE; NICE SATINY IRID.; A TOUGH ITEM)**
46. M'Burg Nesting Swan 6 Ruffled Bowl – Green (very scarce and desirable; nice satiny irid.)
47. 8-1/2" M'Burg Grape Wreath Variant Bowl with 3-in-1 Edge – Green (radium and a beaut.; great color and irid.)
48. 7 – 7-1/2" M'Burg Grape Wreath 6 Ruffled Bowl – Green (radium and very attractive; nice)
49. M'Burg Peacock Tail Variant 6 Ruffled Compote – Lt. Mari. (radium; light in color)
50. **M'BURG SUNFLOWER PIN TRAY – AMYTH. (PERFECT AND VERY RARE AND DESIRABLE; NICE)**
51. M'Burg Diamond Tumbler – Amyth. (nice color; a bit rough at mold line on base)
52. 5-1/2" M'Burg Strawberry Wreath Variant Deep Flared Ind. Berry Bowl – Mari. (radium and a rare shape for this item)
53. **5-1/2" M'BURG PEACOCK DEEP FLARED IND. BERRY BOWL – MARI. (RADIUM; NO BEE, NO BEADING; SCARCE)**
54. **MAKER (?) UNUSUAL EUROPEAN DRAGON VASE – BLACK AMYTH. (NEVER SEEN ANYTHING LIKE IT BEFORE; HAS CHIPS ON TOP EDGE)**
55. **PHOENIX LOGANBERRY HANDLED WATER PITCHER – MARI./MILK GLASS; (EXTREMELY RARE ITEM; PERFECT; WITH GREAT IRID.)**
56. **PHOENIX MOON AND STARS LARGE STEMMED 2-SIDED BANANA DISH – MARI./MILK GLASS (ANOTHER RARE ITEM; NICE COLOR AND IRID.)**
57. **PHOENIX LOGANBERRY COVERED SWEETMEAT COMPOTE – PEARLIZED MILK GLASS (FIRST OF THESE I'VE SEEN; VERY RARE AND DESIRABLE; (SMALL CHIP ON LID)**
58. **PHOENIX LACY DEWDROP LARGE COVERED DISH – PEARLIZED MILK GLASS (RARE SHAPE IN A DIFFICULT COLOR; NICE)**
59. **PHOENIX LACY DEWDROP COVERED BUTTER DISH – PEARLIZED MILK GLASS (RARE ITEM; NICE COLOR & IRID; NICE)**
60. **PHOENIX LACY DEWDROP COVERED SUGAR BOWL – MARI./MILK GLASS (VERY SCARCE; NICE COLOR & IRID.)**
61. **PHOENIX LACY DEWDROP HANDLED CREAMER – MARI./MILK GLASS (ANOTHER NICE EXAMPLE)**
62. **WESTMORELAND WILD ROSE HANDLED SYRUP JUG – MARI. (RARE AND DESIRABLE; NICE COLOR, IRID. AND CONDITION)**
63. **WESTMORELAND FILE AND FAN 6 RUFFLED STEMMED COMPOTE – MARI./MILK GLASS (GREAT EXAMPLE WITH NICE MARI. OVERLAY)**
64. **WESTMORELAND FILE & FAN FLARED STEMMED COMPOTE – MARI./MILK GLASS (ANOTHER FINE EXAMPLE; REALLY NICE)**
65. **8-1/2" WESTMORELAND CAROLINA DOGWOOD FLARED PLATE – MARI./MILK GLASS (RARE AND HARD TO FIND; SCARCE SHAPE)**
66. **8-1/2" WESTMORELAND CAROLINA DOGWOOD FLARED PLATE – PUR./OPAL. (ANOTHER THAT WOULD BE CLASSIFIED AS A PLATE)**
67. 8-1/2" Westmoreland Carolina Dogwood Flared Bowl/Plate – Lt. Mari./Milk Glass (scarce; light in color; attractive)
68. **8 – 8-1/2" WESTMORELAND SCALES ICE CREAM SHAPED BOWL – MARI./MILK GLASS (SCARCE; NICE COLOR AND IRID.)**
69. 8" Westmoreland Scales Ice Cream Shaped Bowl – Blue Opal. (nice base glass color; irid. is light)
70. **8-1/2" WESTMORELAND CAROLINA DOGWOOD 6 RUFFLED BOWL – BLUE OPAL. (SCARCE; NICE COLOR AND OPAL.; LIGHTER IRID.)**
71. 8 – 8-1/2" Westmoreland Pearly Dot 6 Ruffled Bowl – Blue Opal. (scarce; average color and irid.)
72. 7 – 8" Westmoreland Smooth Rays Deep 6 Ruffled Bowl – Blue Opal. (worn interior irid.)
73. **WESTMORELAND MINIATURE INTAGLIO FLOWER 4-SIDED BOWL WITH WIRE HANDLE – PUR./OPAL. (CUTE LITTLE THING; GREAT OPAL. AND LUSTRE)**
74. Maker (?) Unusual Diamond Quilted Covered Butter Dish – Lt. Mari. (never seen this guy before; nice yellow finish)
75. **MAKER (?) EUROPEAN "PLUME PANELS" COVERED CHEESE DISH – AMYTH. (NEVER SEEN ONE OF THESE BEFORE; UNUSUAL EUROPEAN FINISH)**
76. Jenkins Mayflower Handled Water Pitcher – Mari (scarce item with above average color and irid.)
77. (3) Jenkins Mayflower Tumblers – Lt. Mari. (selling choice; one has small chip)
78. European Cane Stemmed Doughnut Tray or Cake Plate – Mari (unusual item; nice color and irid.)
79. Depression Era Golfer Ashtray – Mari. (scarce)
80. **CAMBRIDGE DOUBLE STAR HANDLED WATER PITCHER – GREEN (SCARCE; DESIRABLE ITEM; NICE COLOR AND IRID.)**
81. **7" U.S. GLASS PALM BEACH OBLONG 2-SIDED BANANA DISH – LT. AMYTH./MARI. (RARE AND DESIRABLE SHAPE; HAS GOOFUS DECORATION)**
82. 9" U.S. Glass Cosmos and Cane 8 Ruffled Master Berry Bowl – White (scarce; nice frosty color and irid.)
83. 7 – 7-1/2" U.S. Glass Cosmos and Cane 8 Ruffled Bowl with Headdress Int. – White (very scarce variation of this pattern; nice)
84. 7" U.S. Glass Cosmos and Cane Ice Cream Shaped Bowl w/ Headdress Int. – Mari. (scarce shape for this item; bright color)
85. 4" U.S. Glass Cosmos and Cane Ind. Round Berry Bowl – White (scarce, nice and frosty)
86. U.S. Glass Cosmos and Cane Sugar Lid Only – Honey Amber (tough part to find)
87. (2) Imperial Grape Stemmed Wine Glasses with Plain Base – Smoke (scarce color, selling choice)
88. Imperial Crab Claw Tumbler – Mari. (nice color and irid.)
89. Imperial Broken Arches Handled Punch Cup – Lt. Blue/Mari. (has slight light blue tint to base)
90. **8-1/2" IMPERIAL FLUTE AND CANE FLARED MASTER BERRY BOWL – BLUE (REALLY NEAT COLOR – SORTA PASTEL)**
91. Imperial Windmill Handled Milk Pitcher – Mari. (great color, detail and irid.)
92. Imperial Poinsettia Handled Milk Pitcher – Mari. (super color and irid.; nice)
93. Imperial Flute Toothpick Holder – Lime Green (really unusual base color; may have slight roughness)
94. Imperial Flute Toothpick Holder – Dk. Mari. (really nice color)
95. **IMPERIAL PANSY FLAT DRESSER TRAY – SMOKE (RARE AND DESIRABLE; GREAT IRID.; LIGHTER BASE COLOR)**
96. (2) Imperial Soda Gold Tumblers – Smoke (nice color and irid.; selling choice)
97. 7-1/2" Tall Imperial Miniature Morning Glory Swung Vase – Smoke (scarce; nice base color)

- _____ 98. Imperial Grape Wine Decanter, Base Only – Smoke (needs a stopper; nice irid.)
- _____ 99. 9" – 9-1/2" Imperial Heavy Grape Lg. 8-Ruffled Bowl – Smoke (great color and irid., really nice)
- _____ 100. **IMPERIAL POPPY SHOW VASE – SMOKE (VERY RARE AND VERY DESIRABLE; SUPER IRID.; REALLY NICE QUALITY ITEM)**
- _____ 101. 17" TALL IMPERIAL MORNING GLORY SWUNG FUNERAL VASE – PUR. (SUPER COLOR AND IRID.; HAS SLIGHTLY ODD SWING; MINOR ROUGHNESS ON BASE)
- _____ 102. 7-1/2" TALL IMPERIAL INTERIOR PLAIN PANELS SWUNG VASE – MARI./MILK GLASS (A DESIRABLE SMALLER SIZE; HAS NICE MARI. OVERLAY)
- _____ 103. Imperial Zipper Variant Covered Sugar – Amyth. (rare color for this item)
- _____ 104. Imperial Little Barrel Novelty – Helios Green (scarce novelty; nice color; has slight roughness on top)
- _____ 105. 11" IMPERIAL HEAVY GRAPE CHOP PLATE – MARI./STRETCH EFFECT (RARE AND VERY DESIRABLE ITEM; GREAT COLOR AND STRETCH EFFECT)
- _____ 106. 7-1/2" Imperial Heavy Grape Plate – Pur. (super color and irid.; has a different lustre)
- _____ 107. 7-1/2" Imperial Heavy Grape Plate – Mari. (nice average color and irid.)
- _____ 108. **10-1/2" IMPERIAL OVAL AND ROUND CHOP PLATE – MARI. (RARE ITEM; NICE COLOR; DIFFERENT!)**
- _____ 109. (2) Imperial Hobstar Band Tumblers – Lt. Mari. (selling so much each for pair)
- _____ 110. **IMPERIAL WAFFLE BLOCK HANDLED FLOWER BASKET – SMOKE (HAS TO BE THE BEST EXAMPLE I'VE SEEN!)**
- _____ 111. **IMPERIAL FLORAL AND OPTIC FTD. TURNED IN ROSE BOWL – MARI./MILK GLASS (PERFECT WITH NICE DARK MARI. OVERLAY)**
- _____ 112. Imperial Interior Panels Turned In Rose Bowl – Mari./Milk Glass (scarce; nice color and overlay)
- _____ 113. **IMPERIAL JEWELS STYLE PLAIN TURNED IN ROSE BOWL WITH MANUF. GROUND BASE – MARI./MILK GLASS (REALLY QUITE A NICE, SCARCE ITEM)**
- _____ 114. 7" – 8" TALL x 6-1/2" FLARED IMPERIAL INTERIOR PANELS SWUNG VASE – MARI./MILK GLASS (SCARCE; NICE DARK MARI. OVERLAY)
- _____ 115. **11" TALL x 6" BASE IMPERIAL ZIPPER LOOP LG. TABLE LAMP – MARI. (PROBABLY AS LARGE A LAMP AS I'VE EVER SEEN; HAS A SMALL DING)**
- _____ 116. Imperial 474 Lg. Handled Water Pitcher – Mari. (scarce, nice color)
- _____ 117. Imperial 474 Tumbler – Mari. (nice color)
- _____ 118. Imperial 474 Stemmed Round Sherbert – Mari. (scarce shape)
- _____ 119. Imperial "Oak Leaf" (?) Lamp Shade – Mari. (has a radium type finish; great color)
- _____ 120. **IMPERIAL DOUBLE SCROLL 3-PC. CONSOLE SET – TEAL (QUITE A RARE COLOR FOR THIS COMPLETE SET; NICE)**
- _____ 121. Imperial 474 Handled Punch Cup – Aqua/Green (very scarce and beautiful; great irid.)
- _____ 122. **IMPERIAL ROCOCO VASE – SMOKE (VERY SCARCE ITEM THAT APPEARS TO BE PERFECT)**
- _____ 123. Imperial Tiger Lily Handled Water Pitcher – Pur. (cracked; but an absolute fantastic shelf piece)
- _____ 124. Depression Era Beehive Covered Honey Jar – Teal (scarce novelty; nice color)
- _____ 125. **WESTMORELAND ORANGE PEEL PUNCH BOWL AND BASE – TEAL (RARE AND VERY UNUSUAL BASE COLOR; ONLY ONE I'VE SEEN)**
- _____ 126. Westmoreland Orange Peel Handled Punch Cup – Teal (one of the only examples I've seen in this color)
- _____ 127. **N HEARTS AND FLOWERS STEMMED RUFFLED COMPOTE WITH RIBBED EXTERIOR – AQUA OPAL. (PERFECT AND A BEAUT.; HAS A DIFFERENT PASTEL LOOK)**
- _____ 128. **N HEARTS AND FLOWERS 8 RUFFLED BOWL WITH RIBBED EXTERIOR – MARI. (VERY SCARCE AND VERY NICE; HAS ABOVE AVERAGE COLOR AND IRID.)**
- _____ 129. N Fine Cut and Roses Ftd. Rose Bowl with Fancy Interior – Ice Blue (very scarce and desirable; nice color with perfect feet)
- _____ 130. **N THREE FRUITS STIPPLED PLATE WITH RIBBED EXTERIOR – BLUE/ELEC. BLUE (NICE EXAMPLE; HAS ELEC. BLUE HIGHLIGHTS)**
- _____ 131. Fenton Holly Bowl with 3-in-1 Edge – Powder Blue/Mari. (scarce base color in an attractive shape)
- _____ 132. 7-1/2" Fenton Acorn Ice Cream Shaped Bowl – Mari./Vaseline (scarce base color; nice example)
- _____ 133. 7-1/2" Fenton Coin Dot Ice Cream Shaped Bowl – Mari./Vaseline (scarce color for this pattern; has nice overlay)
- _____ 134. **FENTON STIPPLED RAYS STEMMED ICE CREAM SHAPED COMPOTE – CELESTE BLUE (A BEAUTIFUL EXAMPLE; GREAT DARK COLOR; NICE IRID.)**
- _____ 135. **FENTON HOLLY 8 RUFFLED BOWL – CELESTE BLUE (VERY RARE COLOR; FROM THE DON MOORE COLLECTION; PERFECT; WITH SILVERY HIGHLIGHTS)**
- _____ 136. **FENTON HOLLY 8 RUFFLED BOWL – MARI./MOONSTONE (EXCELLENT EXAMPLE; NICE BASE COLOR WITH DK. OVERLAY)**
- _____ 137. **FENTON HOLLY 8 RUFFLED BOWL – AQUA/MARI. (ACTUALLY QUITE A RARE BASE COLOR; NOT MANY SOLD)**
- _____ 138. **FENTON HOLLY 8 RUFFLED BOWL – EMERALD GREEN (GREAT BASE COLOR THAT IS BRIGHT; A NICE EXAMPLE)**
- _____ 139. **FENTON HOLLY 8 RUFFLED BOWL – BLACK/AMYTH. (RARE BASE COLOR; HAS AVERAGE IRID.; A TOUGHIE)**
- _____ 140. Fenton Holly 8 Ruffled Bowl – Powder Blue/Mari. (scarce base color; unusual)
- _____ 141. Fenton Holly 8 Ruffled Bowl – Blue (nice irid.)
- _____ 142. Fenton Holly 8 Ruffled Bowl – Depression Green (non-iridized; sorta scarce)
- _____ 143. **FENTON HOLLY BOWL WITH 3-IN-1 EDGE – MARI./VASELINE (QUITE A RARE ITEM IN THIS SHAPE AND BASE COLOR)**
- _____ 144. Fenton Holly Bowl With 3-in-1 Edge – Lt. Amber/Mari. (odd tint; has nice irid.)
- _____ 145. Fenton Holly Bowl With 3-in-1 Edge – Teal/Green (odd tint; has something to do with the spray)
- _____ 146. Fenton Holly Ice Cream Shaped Bowl – Amyth. (nice color and irid.)
- _____ 147. Fenton Holly Ice Cream Shaped Bowl – Amyth. (nice color and irid.)
- _____ 148. Fenton Holly 6 Ruffled Bowl – Green (scarce, nice color)
- _____ 149. Fenton Holly 6 Ruffled Bowl – Blue (nice color)
- _____ 150. Fenton Holly 6 Ruffled Bowl – White (scarce; frosty with average irid.)
- START OF SECOND SESSION**
- _____ 151. Fenton Holly 6 Ruffled Bowl – Clamb. (nice irid.)
- _____ 152. 8" Fenton Peacock Tail Ice Cream Shaped Bowl – Green (satiny finish)
- _____ 153. 8" Fenton Ribbon Tie Ice Cream Shaped Bowl – Green (satiny finish)
- _____ 154. **8-3/4" FENTON DRAGON AND LOTUS ICE CREAM SHAPED BOWL – RED (RARE; NICE RED BASE COLOR; IRID. IS SILVERY)**
- _____ 155. **8" FENTON DRAGON & LOTUS ICE CREAM SHAPED BOWL – GREEN (A VERY ATTRACTIVE EXAMPLE; GREAT IRID.)**
- _____ 156. 9" Fenton Holly Bowl with 3-in-1 Edge – Green (scarce shape in this color)
- _____ 157. 8-1/2" Fenton Vintage Grape 8 Ruffled Bowl – Green (satiny finish)
- _____ 158. 8-3/4" Fenton Vintage Grape 8 Ruffled Bowl – Teal/Green (odd tint; a bit different)
- _____ 159. **9-3/4" FENTON DRAGON & STRAWBERRY LG. FTD. 8 RUFFLED BOWL – GREEN (RARE AND VERY DESIRABLE; NICE IRID. WITH GOLD HIGHLIGHTS)**
- _____ 160. **9-3/4" FENTON CHERRY CHAIN LG. BOWL WITH 3-IN-1 EDGE – GREEN (VERY RARE BOWL IN THIS COLOR AND SHAPE; AND IT'S NICE!)**
- _____ 161. **9-1/2" FENTON CHERRY CHAIN LARGE ICE CREAM SHAPED BOWL – DK. MARI. (A REAL BEAUTY! DARK WITH GREAT IRID.)**
- _____ 162. 9-1/2" Fenton Feathered Serpent Large Ice Cream Shaped Bowl – Dk. Mari. (another nice dark example)
- _____ 163. 9" Fenton Persian Medallion Deep Flared Master Berry Bowl – Dk. Mari. (great irid.; very scarce shape!)
- _____ 164. **8-1/2" FENTON PETER RABBIT ICE CREAM SHAPED BOWL – BLUE (RARE AND VERY DESIRABLE; GREAT DETAIL AND IRID.; HAS AN IRIDIZED STAIN ON INTERIOR)**
- _____ 165. **8-1/4" FENTON CORAL ICE CREAM SHAPED BOWL – GREEN (RARE AND DESIRABLE ITEM ANYMORE; REALLY NICE)**
- _____ 166. 9" Fenton Coral 8 Ruffled Bowl – Mari. (scarce pattern; nice detail)
- _____ 167. 8-3/4" Fenton Heart and Vine Bowl with 3-in-1 Edge – Green (satiny finish)
- _____ 168. **9" FENTON THISTLE BOWL WITH HORLACHER ADV. – GREEN (SCARCE ITEM WITH ADVERTISEMENT ON COLLAR BASE)**
- _____ 169. **9-1/4" FENTON PLAID 8 RUFFLED BOWL – BLUE (RARE AND DESIRABLE; ONE OF THE BETTER EXAMPLES I'VE SEEN)**

- _____ 170. **8-3/4" – 9" FENTON PLAID DEEP 8 RUFFLED BOWL – GREEN (ANOTHER RARE COLOR FOR THIS PATTERN; GETTING TOUGH TO FIND)**
- _____ 171. 8-1/2" Fenton Plaid Ice Cream Shaped Bowl – Mari. (scarce; nice color and irid.; tough pattern)
- _____ 172. 9" Fenton Wild Blackberry 6 Ruffled Bowl – Green (scarce pattern)
- _____ 173. 9" Fenton Concord Grape 6 Ruffled Bowl – Green (very scarce and very desirable pattern)
- _____ 174. **10" FENTON LITTLE FISHES BALL FTD. 8 RUFFLED BOWL – BLUE (RARE AND DESIRABLE; PERFECT; WITH GREAT DETAIL)**
- _____ 175. **9" FENTON LITTLE FISHES BALL FTD. ICE CREAM SHAPED BOWL – DK. MARI. (VERY SCARCE AND HAS GREAT DETAIL; NICE)**
- _____ 176. 9-3/4" Fenton Little Flowers Lg. 8 Ruffled Bowl – Blue (really impressive item; nice color)
- _____ 177. 9-3/4" Fenton Little Flowers Bowl with 3-in-1 Edge – Green (satiny finish)
- _____ 178. Fenton Orange Tree Standard Flared Handled Mug – Aqua/Mari. (rare item; tough base color; average detail)
- _____ 179. Fenton Orange Tree with Trunk Ice Cream Shaped Bowl – Green (very scarce; great irid.; has small chip on edge)
- _____ 180. 8-1/2" Fenton Autumn Acorn 6 Ruffled Bowl – Green (satiny finish)
- _____ 181. 9" Fenton Captive Rose 6 Ruffled Bowl – Amyth. (nice example; nice bright irid.)
- _____ 182. 9" Fenton Captive Rose 6 Ruffled Bowl – Green (nice item; has smoothed chip on exterior.)
- _____ 183. 9-1/2" Fenton Captive Rose 6 Ruffled Bowl – Dk. Mari. (nice color and irid.)
- _____ 184. **9-1/4" FENTON LOTUS AND POINSETTIA BALL FTD. DEEP FLARED BOWL – AMYTH. (VERY RARE BASE COLOR FOR THIS ITEM; GREAT IRID.)**
- _____ 185. 9" Fenton Peacock and Grape 8 Ruffled Bowl – Green (nice color and irid.)
- _____ 186. 9" Fenton Chrysanthemum 8 Ruffled Bowl – Green (rare base color for this item)
- _____ 187. 9-1/2" Fenton Feather Stitch 6 Ruffled Bowl – Green (scarce color for a scarce item)
- _____ 188. 7-1/4" Fenton Lions 6 Ruffled Bowl – Blue (very scarce; nice color, irid. and detail)
- _____ 189. **10" FENTON TEN MUMS 6 RUFFLED BOWL – GREEN (RARE AND DESIRABLE; GREAT COLOR AND IRID.)**
- _____ 190. **10-1/2" FENTON TEN MUMS 6 RUFFLED BOWL – DK. MARI. (VERY RARE BASE COLOR; GREAT IRID.)**
- _____ 191. Fenton Kittens Handled Cup – Mari. (scarce; desirable; it rocks when it sits)
- _____ 192. Fenton Kittens 6 Ruffled Bowl – Mari. (scarce; nice color)
- _____ 193. Fenton Kittens Round Cereal Bowl – Mari. (scarce; a really nice example; nice detail)
- _____ 194. Fenton Rose Spray Stemmed Jack in the Pulpit Compote – Celeste Blue (very scarce; underpriced; a nice pastel example)
- _____ 195. **7-1/2" FENTON PINE CONE FLAT PLATE – ROOT BEER/AMBER (VERY RARE AND DESIRABLE; THIS IS ONE GREAT COLORED ITEM)**
- _____ 196. 7-1/2" Fenton Pine Cone Flat Plate – Amyth. (very scarce; nice satiny color and irid.)
- _____ 197. **6-1/2" FENTON PINE CONE PLATE WITH paneled EXTERIOR – AMYTH. (SCARCE; GREAT DETAIL AND COLOR)**
- _____ 198. 6-1/2" Fenton Pine Cone Plate with Plain Exterior – Blue (scarce; satiny; multi-colored item)
- _____ 199. **6-1/2" FENTON PINE CONE PLATE WITH paneled EXTERIOR – GREEN (RARE; DESIRABLE; WITH ATTRACTIVE IRID.)**
- _____ 200. **9-1/2" FENTON LEAF CHAIN PLATE WITH BERRY EXTERIOR – BLUE/ELEC. BLUE (A SUPER BRIGHT EXAMPLE; IRID. IS JUST A BIT UNEVEN)**
- _____ 201. **9-1/2" FENTON PEACOCK AND GRAPE FLAT PLATE WITH BERRY EXTERIOR – BLUE (RARE COLOR; HAS A SUBDUED MULTI-COLORED IRID.)**
- _____ 202. **9-1/2" FENTON PEACOCK AND GRAPE FLAT PLATE WITH BERRY EXTERIOR – ELEC. MARI. (RARE AND SUCH A BEAUT.; HAS BRIGHT BLUE & YELLOW IRID.)**
- _____ 203. **8" – 8-1/2" FENTON PEACOCK AND GRAPE ICE CREAM SHAPED BOWL – PUR./OPAL. (RARE AND QUITE NICE; GREAT IRID. WITH OPAL. ON EDGE)**
- _____ 204. **9-1/2" FENTON PEACOCK AT THE URN PLATE WITH BERRY EXTERIOR – BLUE/ELEC. BLUE (VERY SCARCE; HAS A BRIGHT IRID. WITH YELLOWS AND BLUES)**
- _____ 205. **7-1/2" FENTON PEACOCK AND DAHLIA FLAT PLATE – MARI. (RARE AND DESIRABLE; PERFECT; WITH A SATINY FINISH)**
- _____ 206. 6" Fenton Persian Medallion Flat Plate – Blue (excellent example; super color and irid.)
- _____ 207. 6" Fenton Persian Medallion Flat Plate – Mari. (irid. on exterior)
- _____ 208. 6-1/2" Fenton Cherry Chain Flat Plate – Mari. (nice satiny irid.)
- _____ 209. 7" Fenton Stippled Rays Flat Plate – Mari./Odd Lt. Amber (slight odd tint)
- _____ 210. **FENTON EXCHANGE BANK – GLENDIVE, MONT./ GARDEN MUMS FLAT PLATE – AMYTH. (EXTREMELY RARE ITEM; NICE SATINY FINISH AND DETAIL)**
- _____ 211. **FENTON GEVURTZ BROS. GARDEN MUMS FLAT PLATE – AMYTH. (EXTREMELY RARE ITEM; NICE DETAIL; HAS CHIP ON FLOWER)**
- _____ 212. **FENTON SEASON'S GREETINGS – EAT PARADISE SODAS FLARED PLATE – AMYTH. (RARE AND DESIRABLE; NICE SATINY FINISH AND DETAIL)**
- _____ 213. 7-1/2" Fenton Leaf Chain Flat Plate – Blue (scarce; satiny multi-colored irid.)
- _____ 214. 9" – 9-1/2" Fenton Holly Plate – Clamb. (scarce; really nice irid.)
- _____ 215. **9" – 9-1/2" FENTON ORANGE TREE WITH TRUNK FLAT PLATE – BLUE (SCARCE; NICE MULTI-COLORED IRID.)**
- _____ 216. 7-1/2" Fenton Vintage Grape Flat Plate – Blue (scarce; sorta silvery radium irid.)
- _____ 217. 7-1/2" Fenton Vintage Grape Flat Plate – Green (scarce; satiny finish)
- _____ 218. Fenton Lotus and Poinsettia Ftd. Ruffled Sauce – Aqua (scarce and desirable base color; satiny)
- _____ 219. 6-1/2" Fenton Sailboats 6 Ruffled Sauce – Lt. Aqua (scarce base color; light satiny finish)
- _____ 220. **FENTON STRETCH FLARED PUNCH BOWL ON BLACK AMYTH. BASE – RED (VERY RARE AND VERY DESIRABLE SET; PERFECT; WHERE DO YOU FIND THEM!)**
- _____ 221. **7-1/2" FENTON LEAF CHAIN 6 RUFFLED BOWL – RED (RARE AND VERY DESIRABLE; ONE OF THE BETTER EXAMPLES; HAS NICE RED COLOR)**
- _____ 222. **7-1/2" FENTON ACORN LOW 8 RUFFLED BOWL – RED (RARE AND VERY DESIRABLE; HAS TO BE ONE OF THE BETTER EXAMPLES; NICE)**
- _____ 223. Fenton Blackberry Spray 4-Sided Hat – Red (scarce; a nice example; has small chip on base)
- _____ 224. Fenton Orange Tree Standard Flared Handled Mug – Brick Red (scarce; has a brick red base color with average irid.)
- _____ 225. **8-1/2" FENTON 3-ROW OPEN EDGE ICE CREAM SHAPED BOWL – ICE GREEN (RARE AND VERY DESIRABLE SHAPE; GREAT COLOR AND IRID.)**
- _____ 226. **FENTON 2-ROW OPEN EDGE LARGE SIZE 6 RUFFLED HAT – ICE GREEN (VERY SCARCE; GREAT COLOR AND IRID.; NICE)**
- _____ 227. **FENTON 2-ROW OPEN EDGE 4-SIDED SQUARE HAT – CELESTE BLUE (LOVE THIS COLOR; A VERY ATTRACTIVE ITEM)**
- _____ 228. Fenton 2-Row Open Edge 4-Sided Square Hat – Powder Blue/Mari. (scarce base color)
- _____ 229. Fenton Blackberry 2-Row Open Edge 6-Ruffled Hat – Powder Blue/Mari. (scarce base color; nice item)
- _____ 230. **FENTON 2-ROW OPEN EDGE JACK IN THE PULPIT HAT – RED (NICE DARK COLOR WITH PRETTY NICE IRID.)**
- _____ 231. Fenton 2-Row Open Edge Jack in the Pulpit Hat – Red/Green Amberina (this is one rare base color example; has crack in lattice)
- _____ 232. Fenton 2-Row Open Edge Jack in the Pulpit Hat – Mari./Vaseline (scarce base color with nice satiny finish)
- _____ 233. Fenton 2-Row Open Edge 6 Ruffled Hat – Aqua (scarce base color)
- _____ 234. Fenton 2-Row Open Edge 6 Ruffled Hat – Mari./Vaseline (scarce base color w/ nice irid.)
- _____ 235. **FENTON 2-ROW OPEN EDGE 2-SIDED HAT – BLACK AMYTH. (RARE BASE COLOR; CAN'T SEE THROUGH IT; SATINY FINISH)**
- _____ 236. Fenton 2-Row Open Edge 2-Sided Hat – Red (scarce; has check in lattice)
- _____ 237. Fenton 2-Row Open Edge 2-Sided Hat – Blue (satiny finish)
- _____ 238. Fenton 2-Row Open Edge 2-Sided Hat – Mari./Vaseline (scarce base color; nice irid.)
- _____ 239. Fenton Vintage Small Size Epergne, Lily Only – Mari. (satiny finish)
- _____ 240. **FENTON DRAGON AND LOTUS 8 RUFFLED BOWL – LIME GREEN OPAL. (RARE AND DIFFERENT; HAS OPAL. ON EDGE WITH MARI. OVERLAY)**
- _____ 241. **FENTON DRAGON AND LOTUS 8 RUFFLED BOWL – LIME GREEN/MARI. (VERY SCARCE BASE COLOR; HAS NICE MARI. OVERLAY)**
- _____ 242. Fenton Dragon and Lotus 8 Ruffled Bowl – Olive Green (odd base color; has a lack of irid. in center)

243. Fenton Dragon and Lotus Spatula Ftd. 8 Ruffled Bowl – Lt. Pur. Opal. (very scarce and desirable; has a light finish; chip on foot)
244. **FENTON DRAGON AND LOTUS SPATULA FTD. ICE CREAM SHAPED BOWL – GREEN (ABSOLUTELY SUPER EXAMPLE; GREAT COLOR AND IRID.)**
245. **9-1/2" FENTON VINTAGE GRAPE ICE CREAM SHAPED BOWL – MARI./VASELINE (RARE AND VERY TOUGH TO FIND IN THIS BASE COLOR)**
246. Fenton Stag and Holly Spatula Ftd. 8 Ruffled Bowl – Amyth. (scarce; nice satiny finish and detail)
247. **FENTON HOLLY 8 RUFFLED BOWL – AMBER (A SUPER, SUPER ITEM; AS ATTRACTIVE AS ANY)**
248. Fenton Stippled Rays Stemmed Ice Cream Shaped Compote – Mari. (actually quite a rare color; unusual)
249. Fenton Iris Stemmed Buttermilk Goblet – Mari. (satiny; nice detail)
250. **FENTON G&C FTD. ROUND FLARED FRUIT BOWL – MARI. (A VERY SCARCE ITEM; NICE MARI. FINISH; PERFECT)**
251. **FENTON BANDED BLACKBERRY 6 RUFFLED HAT – MARI./MOONSTONE (ONE OF THE BETTER EXAMPLES I'VE SEEN OF THIS PATTERN; NICE)**
252. **FENTON CAPTIVE ROSE STEMMED 6 RUFFLED COMPOTE – WHITE (VERY SCARCE AND DESIRABLE; GREAT IRID.)**
253. Fenton Pond Lily 2-Handled 4-Sided Bon Bon – White (scarce; frosty with average irid.)
254. Fenton Bouquet Tumbler – Blue (a very nice example with bright highlights)
255. Fenton Apple Tree Handled Bulbous Water Pitcher – Mari. (average color and irid.)
256. Fenton Apple Tree Tumbler – Mari. (average color)
257. (2) Fenton Deep Round Ftd. Idn. Nut Cups – Mari. (very scarce miniature items; selling choice)
258. Dugan Leaf Ray Handled Nappy – White (frosty with great irid.)
259. Dugan S Repeat Handled Punch Cup – Pur. (an attractive example)
260. **DUGAN CHRISTMAS COMPOTE – DK. MARI. (VERY RARE AND VERY DESIRABLE; NICE DARK COLOR WITH GREAT IRID; FROM THE SPANGLER COLLECTION)**
261. Dugan Butterfly and Tulip Lg. Deep Round Ftd. Bowl with I.F.F. Exterior. - Mari. (very scarce; nice bright satiny finish)
262. **DUGAN HONEYCOMB ROSE BOWL – PUR. OPAL (ODD AND DESIRABLE FLARE; NICE OPAL.)**
263. 6-1/2" Tall x 7-1/2" Wide Dugan Thin Rib Squatty Swung Vase – Pur Opal (odd and desirable flare; nice opal.)
264. 10-1/2" – 11" Tall Dugan Spiral Swung Vase – Pur. Opal (nice opal)
265. **9 – 9-1/2" DUGAN ROUND UP LOW RUFFLED PLATE – PUR. (VERY SCARCE; HAS A SUBDUED MULTI-COLORED IRID; SATINY AND NICE)**
266. **9" DUGAN ROUND UP FLAT PLATE – BLUE (OVAL; NICE COLOR; NICE SATINY IRID.)**
267. **9" EUROPEAN FOUR FLOWERS VARIANT LOW RUFFLED PLATE – BLACK AMYTH. (RARE; NICE COLOR; NICE SATINY IRID.)**
268. (2) 10" – 11" Tall Dugan Lined Lattice Swung Vases – Pur. (super color and irid; a nice example)
269. **DUGAN MANY FRUITS RUFFLED PUNCH BASE ONLY – PUR. (TOUGH PART WITH NICE BRIGHTER MULTI-COLORED IRID.)**
270. **10-1/2" – 11" DUGAN PERSIAN GARDEN LG. 6 RUFFLED BOWL – PUR. OPAL. (RARE AND DESIRABLE; NICE OPAL. AND MARI. OVERLAY)**
271. **DUGAN FISHNET SINGLE LILY RUFFLED EPERGNE – PUR. OPAL. (RARE AND VERY ATTRACTIVE; WELL MATCHED WITH GREAT OPAL. AND IRID.)**
272. **7" DUGAN GRAPEVINE LATTICE FLAT PLATE – WHITE (VERY SCARCE; SUPER BRIGHT IRID.; NICE!)**
273. 6-1/2" Dugan Persian Garden Plate with Pools of Pearls Exterior – White (scarce; has nice average color and irid.)
274. **6-1/2" DUGAN PODS AND POSIES FLAT PLATE WITH PLAIN EXTERIOR – PUR. OPAL. (VERY SCARCE AND VERY DESIRABLE; NICE OPAL. AND OVERLAY)**
275. 6-1/2" Dugan Pods and Posies Flat Plate with Basketweave Exterior – Pur. Opal. (very scarce; nice average color and opal.)
276. 6-1/2" Dugan Flowers and Beads Exterior Flat Plate – Pur. Opal. (scarce; nice color and opal.)
277. 6-1/2" Dugan Fishscale and Beads Plate with Crimped Edge – Pur. Opal. (scarce; nice color with super opal.)
278. 6-1/4" Dugan Interior Ribbed Crimped Edge Plate with Jeweled Heart Exterior – Pur. Opal (scarce; nice opal. and overlay)
279. **6-1/2" DUGAN SKI STAR CRIMPED EDGE PLATE WITH COMPASS EXTERIOR – PUR. OPAL. (VERY SCARCE; NICE OPAL. AND FLATTER THAN MOST)**
280. **DIAMOND PLAIN LUSTRE AND CLEAR CUPPED IN CONSOLE BOWL – RED (QUITE A SCARCE ITEM; HAS BRIGHT LUSTRE; A LIGHTER SHADE OF RED)**
281. (6) M'Burg Hobstar and Feather Handled Punch Cups – Dk. Mari. (nice satiny examples; sold per each)
282. 9-1/2" M'Burg Rays and Ribbons Deep Flared Bowl – Amyth. (satiny; scarce shape)
283. 9" – 9-1/2" M'Burg Rays and Ribbons 6 Ruffled Bowl – Mari. (radium and a real beaut!)
284. 7-1/2" M'Burg Hanging Cherries Low Ice Cream Shaped Bowl – Mari. (nice satiny example)
285. **9" M'BURG PEACOCK AT THE URN "MYSTERY" BOWL WITH 3-IN-1 EDGE – GREEN (RARE AND DESIRABLE – A NICE SATINY EXAMPLE)**
286. 9" – 9-1/2" M'Burg Holly Sprig Variant 6 Ruffled Bowl with Tight Crimped Edge – Green (attractive radium item; goldish highlights)
287. 7-1/2" M'Burg Little Stars 6 Ruffled Bowl – Mari. (scarce; nice satiny finish)
288. **9" M'BURG FLEUR DE LEI DOMED FLARED BOWL WITH 3-IN-1 EDGE; AMYTH. (RARE AND DESIRABLE SHAPE WITH GREAT RADIUM FINISH; SOME MINOR ROUGHNESS)**
289. 9-1/2" M'Burg Whirling Leaves 6 Ruffled Bowl – Amyth. (great radium finish; small chip on back of one point)
290. **5" TALL x 5-1/2"-6" DIA. DUGAN LINED LATTICE SQUATTY FLARED VASE – MARI. (A TOUGH ITEM)**
291. 6-1/2" Dugan Cherries Plate with Tight Crimped Edge and Jeweled Heart Exterior – Pur. (scarce; has silvery highlights and non-iridized exterior)
292. **9" – 9-1/2" DUGAN ROUND UP LOW RUFFLED BOWL/PLATE – PUR. (VERY SCARCE DESIRABLE; NICE SATINY FINISH)**
293. **8-1/2" – 9" DUGAN FANCIFUL BOWL WITH 3-IN-1 EDGE – DK. PUR. OPAL. (RARE PATTERN; NICE EXAMPLE; HAS ONE SPOTTY AREA)**
294. **DUGAN BORDER PLANTS DOMED 10 RUFFLED BOWL – DK. PUR. OPAL. (RARE PATTERN; NICE EXAMPLE; HAS ONE SPOTTY AREA)**
295. **11-1/2" DUGAN HEAVY WEB DEEP FLARED BOWL WITH MANUF. GROUND BASE – PUR. OPAL. (VERY RARE PATTERN; NICE OPAL. ON EDGE)**
296. **DUGAN VINEYARD HANDLED BULBOUS WATER PITCHER – PUR. (PERFECT; RARE WITH NICE MULTI-COLORED IRID.)**
297. **IMPERIAL THREE ROW 6 RUFFLED VASE – MARI. (VERY RARE ITEM WITH NICE AVERAGE IRID.; HAS CHIP ON ONE RIDGE)**
298. 6-1/2" – 7" Tall Imperial Beaded Bullseye Squatty Flared Vase – Dk. Mari. (nice color and irid.; an odd shape)
299. 9" – 9-1/2" Imperial Cobblestone 8 Ruffled Bowl – Amyth. (scarce; silvery irid.)
300. **9" – 9-1/2" IMPERIAL PANSY 8 RUFFLED BOWL – PUR. (SUPER ITEM WITH SUPER IRID.)**
301. **10" – 10-1/2" FOSTORIA BROCADED PALM LG. ROUND DINNER PLATE – PINK (NEVER SEEN ANOTHER; HAS 12 PANELS ON THE EXTERIOR)**
302. **8" – 8-1/2" FOSTORIA BROCADED ACORNS ROUND PLATE – ICE BLUE (SCARCE; WITH NICE IRID.; HAS PERFECT GOLD ON EDGE)**
303. 6-1/2" – 7" Fenton Stippled Rays Plate – Mari. (satiny finish)
304. 7" – 7-1/2" Fenton Acorns Ice Cream Shaped Bowl – Mari./vaseline (scarce; iridized only on exterior)
305. **10" – 10-1/2" TALL FENTON FINE RIB STANDARD SWUNG VASE – RED (NICE RED EXAMPLE; LOOKS RED)**
306. **12" TALL FENTON FINE RIB SWUNG VASE – VASELINE OPAL. (EXTREMELY RARE AND DESIRABLE COLOR; HAS CHIP ON EDGE OF BASE)**
307. 9-1/2" Tall Fenton Fine Rib Standard Swung Base – Dk. Powder Blue/ Lt. Mari. (odd tint; shade of blue that's attractive)
308. **9" – 9-1/2" TALL FENTON FINE RIB STANDARD SWUNG VASE – BLACK AMYTH. (RARE BASE COLOR; GOLD/SILVERY FINISH WITH A SMALL STAIN AREA)**
309. **7-1/2" FENTON ACORNS 8 RUFFLED BOWL – RED SLAG (RARE BASE COLOR; IRID. IS SILVERY)**



BURNS
 AUCTION SERVICE
 P.O. BOX 608 • BATH, NEW YORK 14810

First Class Mail
 U.S. Postage
 PAID
 Eugene, Oregon
 Permit No. 305

**Keystone
 Carnival Glass Club
 Convention Auction**

**Friday & Saturday
 May 28 & 29, 1999**

Friday:
 Preview 4:00 P.M.; Auction 6:30 P.M.
 Lots 1-150

Saturday:
 Preview 8:00 A.M.; Auction 9:00 A.M.
 Lots 151-end

