

# CARNIVAL GLASS AUCTION

Saturday, May 15, 1999 9:00 a.m.

Held Inside the Mickey Reichel Auction Center

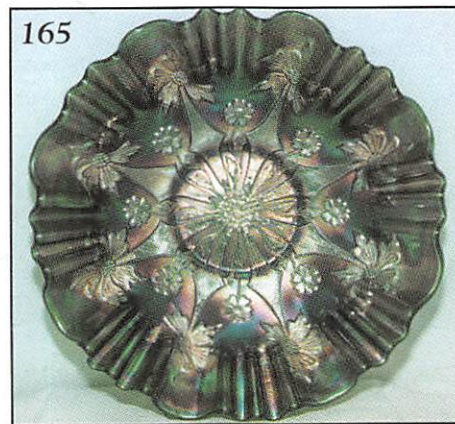
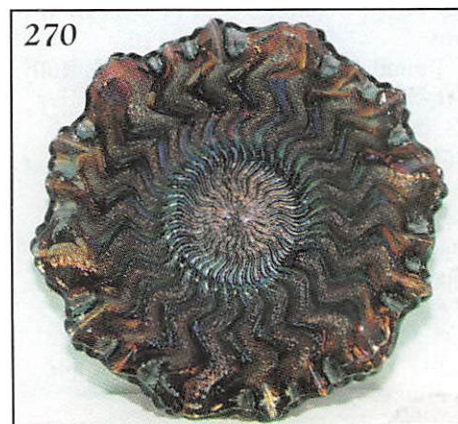
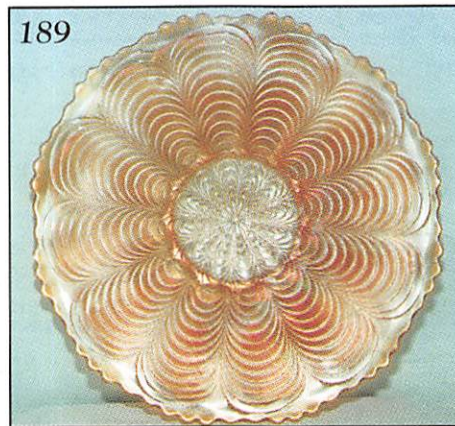
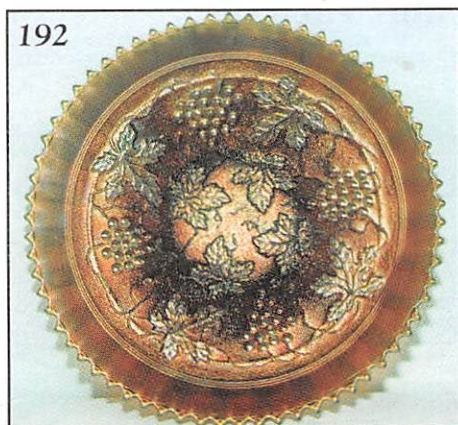
Office: 660-882-5292 • Boonville, Missouri • Home: 660-882-5283



Direct e-mail: [mreichel@undata.com](mailto:mreichel@undata.com)



NEW WEB SITE ON: <http://www.woodsland.com/carnivalglass>






# NO BUYERS PREMIUM

## Held Inside the Mickey Reichel Auction Center

1 Mile North of I-70 on Hwy. 5, Exit 101, Boonville, Missouri • 20 Miles West of Columbia, MO on I-70  
Preview Friday 12 p.m. - 6 p.m. and 7:30 a.m. - 9:00 a.m. Day of Auction

Make Reservations **EARLY** at one of these local motels:

Days Inn: 660-882-8624 • Comfort Inn: 660-882-5317 • Super 8: 660-882-2900


 **ALTON and GLADYS SKOUBY Collection**  
A collection no matter the pattern  
these wonderful folks bought it for Quality Iridescence.

### Auction Consists of Rarity, Great Irid.. and Variety


**WRITE IN BIDS:** If you are unable to attend the auction, we will be happy to accept absentee bids which must be received by THURSDAY, MAY 13, 1999. Don't Delay.

**FOR AUCTION PRICE RESULTS:** Send \$3.00 and Large S.A.S.E. to 516 Third Street, Boonville, MO 65233-1536

**PLEASE NOTE:** There is a \$5 handling charge for each successful bid which will be added to the selling price for all write-in bids. This is in addition to the cost of postage, insurance and packing. Your write-in bid will be entered just as if you are present and bidding. Successful bidders will be notified in 1 to 3 days by the auctioneer (so be sure to include your phone number). Direct mail bids to Auctioneer Mickey Reichel, 516 Third Street, Boonville, MO 65233-1536. Terms: Cash or Check accepted with proper I.D. and Social Security Number and References. Announcements made day of the auction supercede all printed material. Not Responsible for Accidents or Sold Items. No return on any items once they leave the Auction Center (No Exceptions).\*\*\*\*

 Call for additional information: 660-882-5292 days or 660-882-5283 evenings.

**FAX: 660-882-5292 (evening hours start FAX transmission after beep)**

 **NOTE: Read each line, Bold and Plain print. Huge Quality Selection.**

**MAIL BIDS:** Items are bid on in perfect condition with average or above iridescence OR as listed in the brochures. Bids will not be carried out when damage on an item has been found during the auction.

**PEOPLE PRESENT AT AUCTION ARE RESPONSIBLE FOR FINDING ANY PINHEADS, WEAR, SPOTTINESS, MANUFACTURER'S DEFECTS OR ANY OTHER MINOR FLAWS, ETC.**

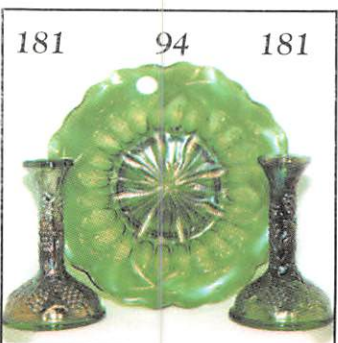
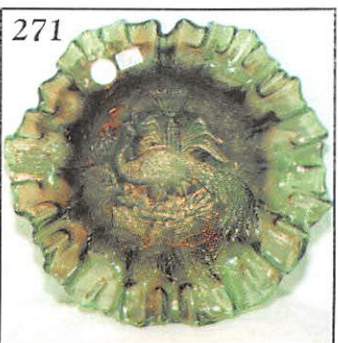
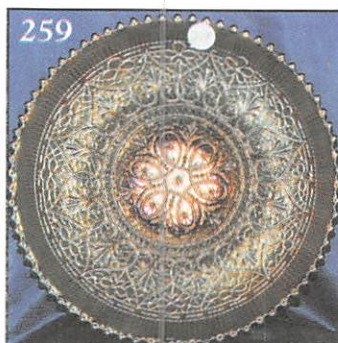
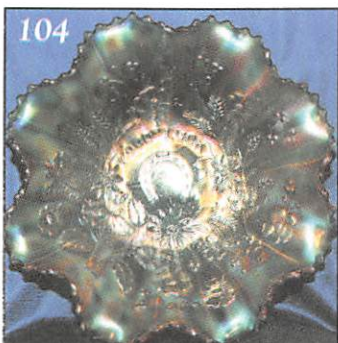
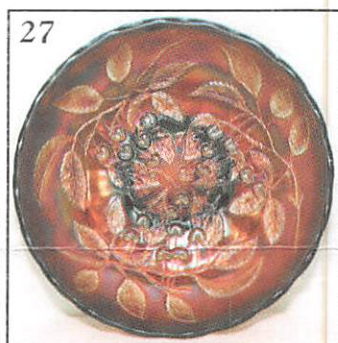
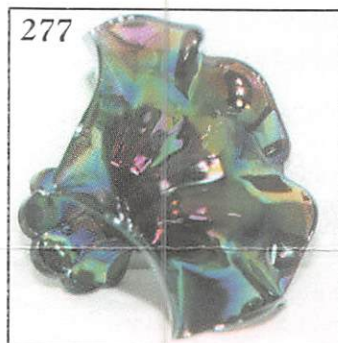
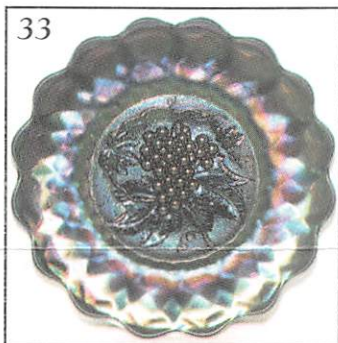
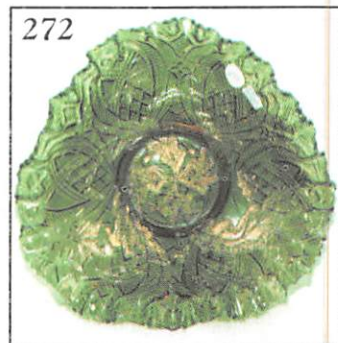
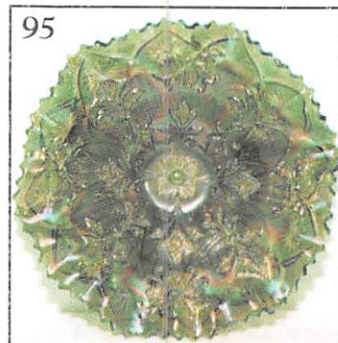
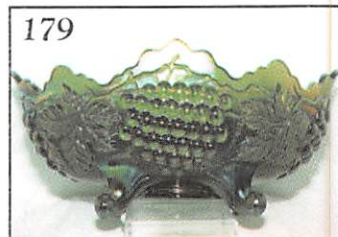
## WELCOME TO THE AUCTION

- |       |   |       |   |
|-------|---|-------|---|
| _____ | 1. M - Contemporary - Fenton Butterfly Ornaments - A or B                       | _____ | 12. M - <u>N</u> Daisy & Drape Ftd. Rose Bowl - Ribbed Int.   |
| _____ | 2. M - 8½" Radium Apple Blossom Twigs - 10 Ruffle Bowl                          | _____ | 13. M - 9" <u>N</u> Grape & Cable plate - B.W. Exterior, Super Pinks - Pumpkin                      |
| _____ | 3. <b>M - Great Radium, 8 Piece, Imp. Broken Arches Punch Set - What a Find</b> | _____ | 14. <b>I.G. - <u>N</u> Peacocks Plate - Super Blues &amp; Yellows - R.B. - Hot Item - Great One</b> |
| _____ | 4. M - MLBG Radium Boutonniere Compote  | _____ | 15. A - Spat. Ftd. 8", 8 Ruffle Two Flowers Bowl - Scarce Color                                     |
| _____ | 5. M - Dark, Rich, <u>N</u> Beaded Cable Rose Bowl                              | _____ | 16. M - Spat. Ftd. 8", 8 Ruffle Two Flowers Bowl - Very Pretty                                      |
| _____ | 6. M - Super, Birds & Cherries Bon Bon  | _____ | 17. <b>A - 7½" Round, Deep, Spat. Ftd., Stag &amp; Holly Nut Bowl - Rarity</b>                      |
| _____ | 7. <b>M - Radium, Butterfly &amp; Tulip Lg. Ftd. Bowl - Great Example</b>       | _____ | 18. M - 8", 8 Ruffle, Spat. Ftd., Stag & Holly Bowl   |
| _____ | 8. M - 11¼" Imp Beaded Bulls Eye Vase - Super Radium                            | _____ | 19. <b>Rare B - Beaded Shell Mug</b>  |
| _____ | 9. M - 9¾" ICS, MLBG Hanging Cherries Bowl - Beautiful Example                  | _____ | 20. A - <u>N</u> Memphis Punch Cups - 3 x 5   |
| _____ | 10. M - 10¼", 6 Ruffle, MLBG Hanging Cherries Bowl - Dark, Rich Satin           | _____ | 21. B - Orange Tree Powder Dish w/lid chips   |
| _____ | 11. M - <u>N</u> Outstanding Fern Ruffled Compote                               | _____ | 22. B - Orange Tree Loving Cup  |
|       |   | _____ | 23. M - Orange Tree Loving Cup  |
|       |   | _____ | 24. P. Grape & Cable, Beautiful Candlestick   |
|       |   | _____ | 25. A - Beaded Cable Rose Bowl - Super Example  |
|       |   | _____ | 26. <b>A - MLBG Boutonniere - Ruffle Compote - Super Radium</b>                                     |



27. **Great A - MLBG - 9¼" Hanging Cherries I.C.S. Bowl - A Beauty**
28. P - J.I.P. 9" Beautiful Corinth Vase
29. P - **N Super 10¼" Diamond Points Vase**
30. P - Radium, Elec., 12" Imp. Flute Vase
31. P - **N Gr/Cable, 4 Place Table Setting - Complete - Well Matched**
32. P - **N Gr/Cable Hat Pin Holder - Extra Nice - Perfect Feet**
33. P - **Imp. 11¼" Heavy Grape Chop Plate - Great**
34. **Super Multi Elec P - Imp. 10" Heavy Grape, 8 Ruffle Bowl**
35. P - Grape Delight Nut Bowl - Perfect Feet
36. Beautiful P - Grape Delight Rose Bowl - Perfect Feet
37. M - Spat. Ftd. 8" Ruffled Peacock & Grape Bowl
38. A - Spat. Ftd. 8" Ruffled Peacock & Grape Bowl - Scarce Color
39. **M - 9¼" Peacock & Grape Plate - Yellows, Pinks & Golds - Very Pretty**
40. **Powder B - Collar Base, 8½" Peacock & Grape Ruffle Bowl - Scarce Color**
41. A - 9" Collar Base, Ruffled Peacock & Grape Bowl - Beautiful Example
42. B - 9" Collar Base, Ruffled Peacock & Grape Bowl - Beautiful Example
43. **A - Spat. Ftd. I.C.S. 7½" Super Peacock & Grape Bowl - Neat Shape**
44. B - 9½" Fenton Holly Plate
45. **Scarce Clam - Fenton 9½" Holly Plate**
46. B - Multi Elec, 9" Fenton Holly Ruffled Bowl - Super Example
47. B - 8½" I.C.S. Fenton Holly Bowl - Collar Base
48. B - Fenton Holly, Goblet Shaped, Compote
49. B - 9¼", 3 in 1 Edge Fenton Holly Bowl
50. B - 11¼" April Showers Vase
51. Deep B - 2 Sides Up, 8¼" Super Cherry Circles Bowl or Bon Bon
52. **Rare B - N Daisy & Plume Ftd. Rose Bowl w/Blackberry Interior - Northwood Blue**
53. Scarce B - Grape Delight Rose Bowl - Perfect Feet
54. Equally Scarce B - Grape Delight Nut Bowl
55. Extra Nice B - **N Leaf & Beads Rose Bowl - Plain Interior**
56. Scarce, Dugan B - 8¼" Round Up, Low Ruffled Bowl
57. **Rare B - N Ruffled, Stippled Strawberry Bowl**
58. **Great B - 11¼" Ftd., I.C.S. Stag & Holly Bowl**
59. **B - Fenton Water Lily & Cattail, Ftd. Banana Bowl w/Thistle Int. - Great Example**
60. B - Hen & Chicks Covered Dish
61. M - Daisy & Plume Stemmed Rose Bowl
62. M - **N Daisy & Plume Ftd. Rose Bowl - Blackberry Interior**
63. **M - English Hob and Button, Nude Lady Epergne - Possibly 1 of a Kind - Sold in 1995**
64. **M - Imp. Daisy Basket - 10¼" Tall - Rare & Old**
65. M - MLBG. 9½", 3 in 1 Fleur de Lis Bowl - Beautiful Satin Irid.
66. Great Radium M - Imp. #474 Milk Pitcher
67. M - 9½" Footed Prism Panels Vases - A or B
68. M - **N Fine Cut & Roses Rose Bowl**
69. **M - MLBG. Feather & Heart Water Set - Rare Find - Great Match**
70. M - Radium Fanciful Low Ruffle 8½" Plate
71. M - 6¼" Fish Scale and Beads Plate - Beautiful Example
72. **Super Dark M - Grape & Cable Hat Pin Holder**
73. **P - Ftd. N 8¼" Wishbone Plate - Hot Pattern**
74. P - 8 Ruffle **N Wishbone Bowl - Ftd.**
75. G - 8 Ruffle **N Wishbone Bowl - Ftd.**
76. Dugan Blue - 9¼" Heart & Vine Plate - Purple & Blue Irid..
77. Dugan Blue - 3 in 1 Heart & Vine Bowl - 8½"
78. Dugan Blue - Ruffle Heart & Vine Bowl - 9"
79. Dugan A - 8½", 3 in 1 Heart and Vine Bowl
80. **B - 9" Captive Rose Plate - Very Nice**
81. **Powder Blue - Collar Base 8½" Leaf Chain I.C.S. Bowl - Rare Color**
82. W - Deep 8" Round Leaf Chain Bowl - Pretty
83. Clam - 9¼", 6 Ruffle Leaf Chain Bowl - Rare Color
84. M - 9", 6 Ruffle Leaf Chain Bowl - Great One
85. Great G - MLBG. Boutonniere Compote - Super Satin
86. Radium Detailed G - Birds & Cherries Bon Bon
87. **Super Radium G - I.C.S. 6" MLBG. Cosmos Bowl**
88. G - **N Daisy & Plume, Ftd. Rose Bowl - Rayed Interior**
89. **G - MLBG. 7 Pc. Diamonds Water Set - Rare - Super Match**
90. G - 9½" Diamond & Rib Vase - Great
91. G - MLBG. 9" I.C.S. Fleur De Lis Bowl - Great Find
92. G - Imp. Flute Toothpick Holder - Scarce Color
93. **G - Imp. #474 Milk Pitcher**
94. Em. G - 9¼" 4 Flowers Variant Bowl - Gorgeous
95. G - 9½" MLBG. Super 3 in 1 Fleur De Lis Bowl
96. **Ice G - Florentine Pastel Panels, 8 Piece Lemonade Set - Compote**
97. Great M - P.C.E. Rib Back Good Luck Bowl
98. **Scarce M - Good Luck B.W. Variant Plate - Popular Pattern**
99. **Scarce P - Good Luck B.W. Vt. Plate - Popular Pattern**
100. **Lav. - Horehound B.W. Good Luck Plate**
101. M - B.W. Good Luck Ruffled Bowl
102. P.M. - Rib Back Stippled, Ruffled Good Luck Bowl - Tooth Chip - Still Great Find
103. M - Rib Back, Ruffled Good Luck Bowl - Fine Example
104. **P.M. - Rib Back Ruffled Good Luck Bowl - Super Example**
105. P - B.W. Ruffled Good Luck Bowl - Very Desirable
106. Super Elec. B - Rib Back Ruffled Good Luck Bowl - Flawed Tooth - Screamer
107. M - 7" Ruffled Lions Bowl - Extra Nice
108. M - Stork ABC Child's Dish - Super Radium
109. M - 9" Square, 8 Ruffle Plaid Bowl - Hot Pattern
110. **M - Scarce, Stippled, Fruits & Flowers Bon Bon**
111. M - Beautiful Fruits & Flowers Bon Bon
112. M - 6½" Imp. Heavy Grape Bowl







- \_\_\_\_\_ 113. **Rare P - Lge. 9½" Imp. Octagon Water Pitcher - A Find**
- \_\_\_\_\_ 114. M - 8½" Radium Flute & Cane Pitcher
- \_\_\_\_\_ 115. M - Wine & Roses 8¼" Pitcher - Very Scarce
- \_\_\_\_\_ 116. **B - Rare, Lily of the Valley Tumbler**
- \_\_\_\_\_ 117. **M - Rare, Omnibus Tumbler**
- \_\_\_\_\_ 118. M - Field Flowers Tumbler - Super Pretty
- \_\_\_\_\_ 119. **G - MLBG. Hanging Cherries Radium Tumbler - Also Rare - Hot Tumbler**
- \_\_\_\_\_ 120. **Very Scarce M - Rising Sun Juice Glass**
- \_\_\_\_\_ 121. G - 8" C.R.E. Thistle Bowl
- \_\_\_\_\_ 122. M - Radium, Stemmed Perfume Stopper, Complete - Lovely
- \_\_\_\_\_ 123. **RARE M - 8 Piece Zipper Stitch Cordial Set - Complete - Super Radium - Few Known**
- \_\_\_\_\_ 124. Beautiful M Satin - 6 Ruffle 9¼" Whirling Leaves Bowl
- \_\_\_\_\_ 125. M - Wreath Rose, Rose Bowls - Choice A or B
- \_\_\_\_\_ 126. **M - Super Radium - 8¼" 10 Ruffle Wind Flower Bowl**
- \_\_\_\_\_ 127. M - N Wild Rose Interior Stippled Rays Nut Bowl - Great Example
- \_\_\_\_\_ 128. M - Vintage, 6 Ruffle Compote - Scarce Shape
- \_\_\_\_\_ 129. Radium M - Twins, 2 Piece Fruit Bowl - Outstanding Example
- \_\_\_\_\_ 130. M - Thistle & Water lily Cattail Ftd. Banana Bowl - Rich
- \_\_\_\_\_ 131. **M - MLBG. 3 in 1, Great Radium, Trout & Fly Bowl**
- \_\_\_\_\_ 132. M - Crider, Patterned Cuspidor from Tumbler - Signed
- \_\_\_\_\_ 133. **Outstanding Radium M - I.C.S. 10¼" Ftd. Stag & Holly Bowl - Very Unique Color**
- \_\_\_\_\_ 134. **Dark Rich M - MLBG. Hobnail Swirl Rose Bowl - Super Satin**
- \_\_\_\_\_ 135. M - Ruffled Blackberry Bramble Compote
- \_\_\_\_\_ 136. M - Multi Elec., 10" I.C.S., Ftd. Stag & Holly Bowl - Beautiful
- \_\_\_\_\_ 137. M - Great Radium, 9¼" Sunflower & Diamond Vase - Scarce and Nice
- \_\_\_\_\_ 138. M - MLBG. 10", 6 Ruffle, Great Radium Rays & Ribbons Bowl
- \_\_\_\_\_ 139. **Extremely Rare Set - M - 7 Piece Rising Sun Juice Set - Complete - Few Sets Known**
- \_\_\_\_\_ 140. Multi Radium - 10½" Ripple Vase - A Beauty
- \_\_\_\_\_ 141. M - N Raspberry Milk Pitcher - Great Example
- \_\_\_\_\_ 142. **M - 7¾" Zipper Loop Lamp**
- \_\_\_\_\_ 143. M - Louisa, 7 Piece Water Set - Depression Era
- \_\_\_\_\_ 144. A - 9", 3 in 1, Fenton Vintage Grape Bowl - Pretty Example
- \_\_\_\_\_ 145. G - 9", 6 Ruffle Fenton Vintage Bowl
- \_\_\_\_\_ 146. A - 8¾" Sq. 8 Ruffle Fenton Vintage Bowl
- \_\_\_\_\_ 147. G - 8¾" Sq. 8 Ruffle Fenton Vintage Bowl
- \_\_\_\_\_ 148. Beautiful B - 8½", 6 Ruffle Thistle Bowl
- \_\_\_\_\_ 149. Scarce A - 3 in 1, 8½" Thistle Bowl
- \_\_\_\_\_ 150. Rich A - 9", 6 Ruffle Autumn Acorns Bowl - Redish Irid..
- \_\_\_\_\_ 151. **P - Heron Mug - Rare Beauty**
- \_\_\_\_\_ 152. **Radium M - Fishermans Mug - Scarce Color**
- \_\_\_\_\_ 153. **P - Fishermans Mug**
- \_\_\_\_\_ 154. Favorite P - N Grape & Cable Powder Jar - Complete
- \_\_\_\_\_ 155. Clam - N Grape & Cable Powder Jar - Complete - Lid Roughness
- \_\_\_\_\_ 156. M - Vintage Grape Powder Jar - Complete
- \_\_\_\_\_ 157. **Dark M Satin - MLBG. Hanging Cherries Creamer**
- \_\_\_\_\_ 158. M - Orange Tree Hat Pin Holder - Normal Foot Roughness
- \_\_\_\_\_ 159. Pretty Radium M - Imp., Windmill Milk Pitcher
- \_\_\_\_\_ 160. **M - Kittens Plate**
- \_\_\_\_\_ 161. M - Kittens, 6 Ruffle Bowl
- \_\_\_\_\_ 162. M - Kittens, 4 Ruffle Bowl
- \_\_\_\_\_ 163. M - Kittens Toothpick Holder
- \_\_\_\_\_ 164. M - Kittens Cup
- \_\_\_\_\_ 165. **G - 10", 3 in 1 Little Flower Bowl - Rare Shape, Size & Color**
- \_\_\_\_\_ 166. **Powder B - Deep 6½" Acorn Bowl - Round**
- \_\_\_\_\_ 167. Dark G - 7" I.C.S. Acorn Bowl
- \_\_\_\_\_ 168. G - 7" Vintage Grape Plate
- \_\_\_\_\_ 169. Imp. Flute Toothpick Holder
- \_\_\_\_\_ 170. M - Imp. Flute Toothpick Holder
- \_\_\_\_\_ 171. I.G. Vas. - Swan Salt - Glows Wild
- \_\_\_\_\_ 172. Celeste B - Swan Salt
- \_\_\_\_\_ 173. **Teal - Signed Hansen, Owl Toothpick Holder**
- \_\_\_\_\_ 174. A - Hansen Rabbit (Basket on Back) Toothpick Holder
- \_\_\_\_\_ 175. A - Hansen Stump Toothpick Holder
- \_\_\_\_\_ 176. G - Signed Robert Hansen, Town Pump
- \_\_\_\_\_ 177. G - Signed Terry Crider, 5½" Treaded Art Glass Vase
- \_\_\_\_\_ 178. **Red - Signed Terry Crider #1, JIP Stemmed Wreath Cherry Vase**
- \_\_\_\_\_ 179. Great G - Radium Grape & Cable Banana Bowl - Lots of Blues
- \_\_\_\_\_ 180. **G - Imp. Grape, 8 Piece, Large, Punch Set - Complete - True Rare Set**
- \_\_\_\_\_ 181. G - N Grape & Cable Candlesticks - 2 X \$ - Extra Nice
- \_\_\_\_\_ 182. Tealish G - Imperial Grape 8" Plate - Glows
- \_\_\_\_\_ 183. G - MLBG. 8¾" C.R.E., 6 Ruffle, Holly Whirl Bowl
- \_\_\_\_\_ 184. Rare G - Low Ruffle Fenton Iris Int., Compote
- \_\_\_\_\_ 185. **Great Radium G - 8" I.C.S., MLBG., Mayan Bowl**
- \_\_\_\_\_ 186. **Great Radium G - 7½" Deep, Round, MLBG., Mayan Bowl**
- \_\_\_\_\_ 187. G - Peacock Tail, 2 Sides Up, Bon Bon
- \_\_\_\_\_ 188. G - Ruffled Peacock Tail Compote
- \_\_\_\_\_ 189. **RARE M - 9" Peacock Tail Plate - Satin Pinks, Golds & Silver**
- \_\_\_\_\_ 190. A - N 9" Grape & Cable, BW Plate
- \_\_\_\_\_ 191. G - N 9" Grape & Cable, BW Plate
- \_\_\_\_\_ 192. **Rare G - Stippled Grape & Cable Rose Distilling Adv. Plate - Beautiful Example - Hot Item**
- \_\_\_\_\_ 193. Smokey Olive - N 9" Grape & Cable BW, VT. Plate - Unusual Base Color
- \_\_\_\_\_ 194. M - 8" N Grape & Cable, 2 Sides Up, Card Tray Plate - BW Exterior
- \_\_\_\_\_ 195. **A - Spat. Ftd. 9" Grape & Cable Meander Plate**
- \_\_\_\_\_ 196. Super Clam - 9" Low Ruffle Imp. Grape Plate



- \_\_\_\_\_ 197. **Super Lav. - 9" Low Ruffle Imp. Grape Plate**
- \_\_\_\_\_ 198. Rich M - N Rib Back Peacocks Bowl - Hot Pattern
- \_\_\_\_\_ 199. M - I.C.S. Fenton Peacock at Urn Bowl
- \_\_\_\_\_ 200. M - 3 in 1 Fenton Peacock at Urn Bowl - Scarce Shape
- \_\_\_\_\_ 201. M - N Peacocks Ruffled Rib Back Bowl - Lots of Pink Irid..
- \_\_\_\_\_ 201A. Marigold Grape & Cable Candlesticks - 2 x \$
- \_\_\_\_\_ **201B. Outstanding Radium M - Persian Garden Fruit Bowl & Base - Great Match**
- \_\_\_\_\_ **202. Great M - N Peacock & Urn, 7 Piece, Ice Cream Set - Beautiful**
- \_\_\_\_\_ **203. Great M - N Peacock at Fountain, 7 Piece, Water Set - Beautiful**
- \_\_\_\_\_ 204. M - N Peacock at Fountain Ftd. Fruit Bowl
- \_\_\_\_\_ 205. M - Radium - Poinsettia Milk Pitcher - Outstanding Example
- \_\_\_\_\_ 206. M - 10 Ruffle, Beautiful Satin Pony Bowl - Scarce Shape
- \_\_\_\_\_ 207. M - Radium Propeller Ruffle Compotes - A, B or C
- \_\_\_\_\_ 208. M - Lge. 7½" O.E., 2 Sides Up, Blackberry Basket - Very Pretty
- \_\_\_\_\_ 209. M - Radium 6¾" Octagon Vase
- \_\_\_\_\_ 210. Rich Satin M - MLBG. Ruffled Nesting Swan Bowl
- \_\_\_\_\_ 211. Extra Nice M - Mary Ann Dugan Vase
- \_\_\_\_\_ 212. Gorgeous P.M. - 5" Lined Lattice Vase - 5½" Flared Top - Super
- \_\_\_\_\_ **213. M - Imp. Loganberry Vase - Beautiful Example - Hot Pattern**
- \_\_\_\_\_ **214. Rich Amber - Imp. Loganberry Vase - Very Scarce Color**
- \_\_\_\_\_ 215. P.O. - 5" Wide Rib Vase - 3¾" Base - 5½" Flared Top - Dandy Example
- \_\_\_\_\_ **216. Radium P.O. - 11½" Pulled Loop Vase - Great Radium - Peachy Irid..**
- \_\_\_\_\_ 217. P - 9½" Imp. Ripple Vase - 3¾" Base - 5¾" Top - Multi Elec.
- \_\_\_\_\_ 218. P - Multi Elec 10½" Ripple Vase
- \_\_\_\_\_ 219. G - 10" Ripple Vase - 3¾" Base - 6¼" Swung Top - Neat Shape
- \_\_\_\_\_ 220. G - 9½" Ripple Vase - Nice Example
- \_\_\_\_\_ 221. A - 10" Rustic Vase - Very Pretty
- \_\_\_\_\_ 222. M - Scarce Inverted Feather Parfait - Radium - Clear Base
- \_\_\_\_\_ **223. M - 5½" Top, Rare Pl. Hobstar Band Compote**
- \_\_\_\_\_ 224. G - N Wild Rose Nut Bowl
- \_\_\_\_\_ **225. Gorgeous, Rare 10¼" Hattie Amber Chop Plate**
- \_\_\_\_\_ **226. Helios - 10¼", Beautiful & Scarce, Hattie Chop Plate - Very Under Valued**
- \_\_\_\_\_ **227. BA - 18" Glass Beaded Necklace**
- \_\_\_\_\_ **228. BA - 18" Glass, Double Strand, Beaded Necklace**
- \_\_\_\_\_ 229. BA - 20" Glass Triple Strand Beaded Necklace
- \_\_\_\_\_ 230. BA - 18" Glass, 6 Strand, Tiny, Beaded Necklace
- \_\_\_\_\_ 231. BA - Braided 18" Beaded Necklace with Beaded Clasp
- \_\_\_\_\_ 232. BA - 7" Beaded Bracelet
- \_\_\_\_\_ 233. BA - Double Floral Hair Barrette
- \_\_\_\_\_ 234. BA - Beaded (pr.) 2½" Hair Combs
- \_\_\_\_\_ 235. Made in Belgium - Fine Bead Work Evening Purse - Multi Elec.
- \_\_\_\_\_ 236. BA - Glass Clasp Earrings - Multi Elec.
- \_\_\_\_\_ 237. Lav. - Horehound N Ruffled 3 Fruits B.W. Bowl - Collar Base
- \_\_\_\_\_ 238. G - N 3 Fruits Ruffled B.W. Bowl
- \_\_\_\_\_ 239. P - N 3 Fruit Ruffled B.W. Bowl
- \_\_\_\_\_ **240. MMG - 9", 6 Ruffle Westmoreland Rays Bowl**
- \_\_\_\_\_ **241. PO - 9½" Tri-Corner Wishbone & Spades Bowl - Rarity - Made from Chop Plate**
- \_\_\_\_\_ 242. PO - 9" Super Apple Blossom Twigs Banana Shaped Bowl
- \_\_\_\_\_ **243. PO - Great Example, Crimped Edge Fish Net Epergne**
- \_\_\_\_\_ 244. Radium W - Cosmos & Cane, 7½" Ruffled Bowl - A Beauty
- \_\_\_\_\_ **245. Frosty W - 9¼" Multi Low Ruffle Fanciful Plate**
- \_\_\_\_\_ **246. M - 9¾" I.C.S. Intaglio, Strawberry Bowl - Outstanding Example**
- \_\_\_\_\_ 247. M - (Ige.) 6½" Dia. Intaglio Daisy (Dugan) Satin Rose Bowl
- \_\_\_\_\_ 248. M - V.I.P., C.R.E. Fenton Holly Hat - Outstanding Example
- \_\_\_\_\_ 249. M - Radium, Ftd. Grape Delight Rose Bowl - Perfect Feet
- \_\_\_\_\_ 250. M - Radium, Ftd. Grape Delight Nut Bowl
- \_\_\_\_\_ 251. Beautiful, 11½" Imp. Heavy Grape Chop Plate
- \_\_\_\_\_ 252. M - N Leaf Beads Rose Bowl - Floral Interior
- \_\_\_\_\_ 253. M - Imp. Grape Decanter - Beautiful Example
- \_\_\_\_\_ 254. PM - 10" Acanthus Chop Plate
- \_\_\_\_\_ **255. RARE Aqua - 6 Ruffle Pony Bowl - Great Find - Marigold Overlay**
- \_\_\_\_\_ 256. M - 6 Ruffle Pony Bowl - Beautiful Example
- \_\_\_\_\_ 257. A - 9" N Rainbow Plate - BW Ext. - Scarce Item
- \_\_\_\_\_ 258. Beautiful, Popular M - Ruffled Concord Bowl
- \_\_\_\_\_ **259. M - Hearts & Flowers Rib Back Plate - Even Buttery Irid. - Beautiful**
- \_\_\_\_\_ **260. IB - Ruffled Hearts & Flowers Rib Back Bowl**
- \_\_\_\_\_ 261. P - Imp. Grape Carafe - Multi Elec.
- \_\_\_\_\_ **262. A - MLBG. 8" Ribbon Edge Grape Wreath Variant Bowl - Beautiful Radium**
- \_\_\_\_\_ 263. A - MLBG. 8¼" 6 Ruffle Grape Wreath Variant Bowl - Beautiful Radium
- \_\_\_\_\_ 264. A - MLBG. 9¼" 6 Ruffle Holly Whirl Bowl - Beautiful Radium
- \_\_\_\_\_ **265. A - MLBG. 6 Ruffle Nesting Swan Bowl - Beautiful Radium**
- \_\_\_\_\_ **266. A - MLBG. 9½" 6 Ruffle Primrose Bowl - Beautiful Radium**
- \_\_\_\_\_ **267. A - MLBG. 9¼" 6 Ruffle Whirling Leaves Bowl - Super Radium**
- \_\_\_\_\_ 268. A - MLBG. Hobnail Swirl Rose Bowl - Scarce Item
- \_\_\_\_\_ **269. A - MLBG. 9¼" I.C.S. 5 Star, Many Stars Bowl - Rare - Radium Beauty - WOW!**
- \_\_\_\_\_ **270. A - MLBG. 9½" Ribbon Edge Ruffled Zig Zag Bowl - Best I've Seen - WOW!**
- \_\_\_\_\_ 271. G - MLBG. Rare, Crimp Ruffled, 10" Peacock Radium Bowl - Very Scarce Shape
- \_\_\_\_\_ **272. G - MLBG. 9" Tri-Corner Crimped Whirling Leaves - Beautiful Radium Bowl**
- \_\_\_\_\_ **273. G - MLBG. 3 in 1 Radium Trout & Fly Bowl - A Beauty**
- \_\_\_\_\_ 274. M - MLBG. 8½" 6 Ruffle, Gorgeous Holly Whirl Bowl



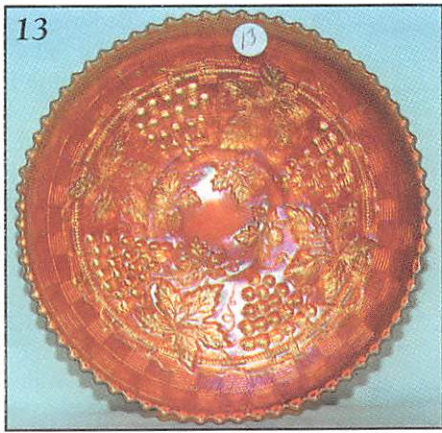
291



290



13



265



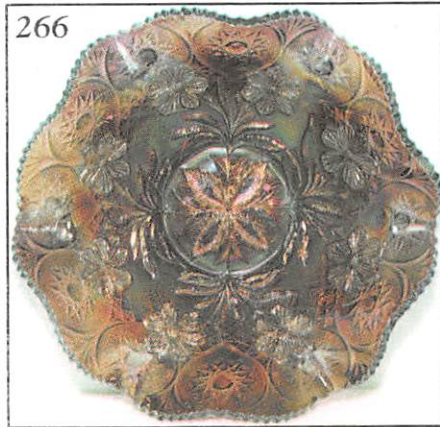
39



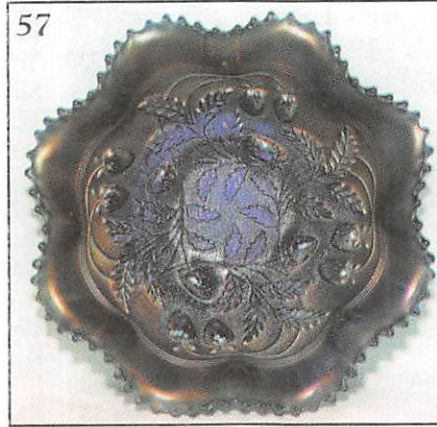
267



266



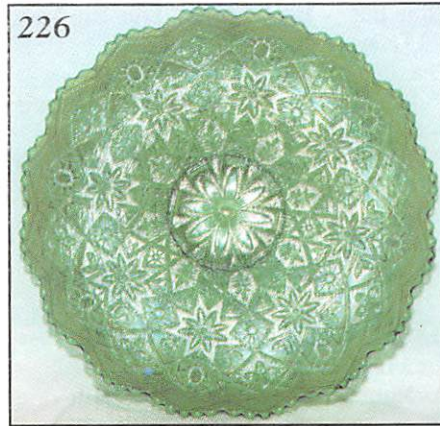
57



262



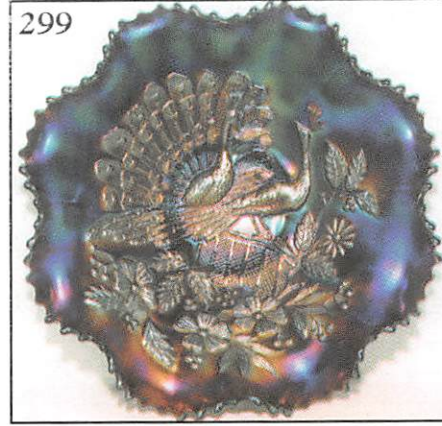
226



243



299





- \_\_\_\_\_ 275. A - Fenton Ruffled Iris Compote - Scarce & Pretty
- \_\_\_\_\_ 276. A - Ruffled Peacock Tail Compote
- \_\_\_\_\_ 277. **Outstanding P - Radium Imp. Columbia Ruffled Vase**
- \_\_\_\_\_ 278. **P - 9" Scroll Embossed Plate - Super Blues, Yellows & Pinks**
- \_\_\_\_\_ 279. **P - 9" Scroll Embossed Plate - Super Greens, Purples and Blues**
- \_\_\_\_\_ 280. P - 7 1/2", 8 Ruffle, Radium Elec., Scroll Embossed Bowl - Plain Exterior
- \_\_\_\_\_ 281. **P - Zippered Heart, Outstanding, 7 Piece Berry Set - Rare Electric**
- \_\_\_\_\_ 282. Scarce A - Thistle, Waterlily & Cattail Banana Bowl
- \_\_\_\_\_ 283. A - Strutting Peacock Cream/Sugar w/Lids - Rare Complete
- \_\_\_\_\_ 284. **G - Shell & Jewel Cream & Sugar w/Lids - Rare Complete**
- \_\_\_\_\_ 285. Scarce G - Imp. Poinsettia Milk Pitcher
- \_\_\_\_\_ 286. Beautiful G - Vintage Grape Ruffled Compote
- \_\_\_\_\_ 287. **G - N Raspberry Milk Pitcher - A Beauty**
- \_\_\_\_\_ 288. P - N Raspberry Milk Pitcher - A Beauty
- \_\_\_\_\_ 289. **P - N Peacock & Urn, 7 Piece, Matching Ice Cream Set - Golds & Silvers**
- \_\_\_\_\_ 290. P - N Peacock at Fountain Matching 4 Place Table Setting - Complete
- \_\_\_\_\_ 291. **P - N Peacock at Fountain, Lge. Ftd. Fruit Bowl**
- \_\_\_\_\_ 292. Dark M - N Grape & Cable, 7 Piece, Water Set - Just Beautiful
- \_\_\_\_\_ 293. **M - N Matching Grape & Cable, 4 Place Table Setting**
- \_\_\_\_\_ 294. **M - N Grape & Cable Cracker Jar - Lovely Example**
- \_\_\_\_\_ 295. M - 9" Ruffled Rib Back Stippled Grape & Cable Bowl - Very Scarce
- \_\_\_\_\_ 296. **P - N Rib Back, Multi Elec., Peacocks Plate - Hot Pattern**
- \_\_\_\_\_ 297. **Beautiful M - 9" N Rib Back Peacocks Plate**
- \_\_\_\_\_ 298. **Pastel M - 9" N Rib Back Peacocks Plate**
- \_\_\_\_\_ 299. **P - Beautiful Ruffled N Peacocks Bowl - Multi Elec.**
- \_\_\_\_\_ 299B. **RARE IB - Ruffled N Peacocks Bowl - What A Find**
- \_\_\_\_\_ 300. P - 9" N Strawberry B.W. Bowl - Rainbow Irid.
- \_\_\_\_\_ 301. Pretty P - Ruffled N Strawberry Bowl - B.W. Exterior
- \_\_\_\_\_ 302. Radium M - Cane & Star, Beautiful, Milk Pitcher
- \_\_\_\_\_ 303. G - N Rayed Ruffled Compote - Alaskan Effect
- \_\_\_\_\_ 304. **P.O. - Starfish Stemmed Bon Bon - Full of Opal**
- \_\_\_\_\_ 305. Beautiful A - Ruffled Wreath Rose Compote
- \_\_\_\_\_ 306. M - N Raspberry Daisy & Plume Ext. - Ftd. Candy Dish
- \_\_\_\_\_ 307. **B - Fenton, Ruffled Holly, Little Compote - Dandy**
- \_\_\_\_\_ 308. M - Plain Int., Ruffled Daisy & Plume Exterior Compote
- \_\_\_\_\_ 309. Beautiful B - Peacock Tail Compote - Ruffled
- \_\_\_\_\_ 310. **M - Rare Beaded Shell Spooner**
- \_\_\_\_\_ 311. B - Miniature Blackberry Compote
- \_\_\_\_\_ 312. P - Ruffled Leaf Rays Nappy
- \_\_\_\_\_ 313. **P - 7 1/2" 8 Ruffle, Rare, Lattice & Points Ext., Daisy Int. Dugan Bowl - Beautiful**
- \_\_\_\_\_ 314. M - 4 Ruffle Blackberry Spray Hat - Beautiful Example
- \_\_\_\_\_ 315. **Smoke - 7 1/2" Morning Glory Mini Vase - 2 3/4" Top - Scarce**
- \_\_\_\_\_ 316. **M - 5 1/2" Mini Morning Glory Vase - 3 5/8" Top**
- \_\_\_\_\_ 317. **G - 4 3/8" Mini Morning Glory Vase - 13 7/8" Top - Rare**
- \_\_\_\_\_ 318. **M - 4 3/8" Mini Morning Glory Vase 4 1/4" Top**
- \_\_\_\_\_ 319. P - 6 3/4" Deep, Scalloped, Round, Scroll Embossed Bowl - Plain Ext. - Beautiful
- \_\_\_\_\_ 320. M - Octagon Goblet
- \_\_\_\_\_ 321. **Vas. - 8 1/2" Stretch Florentine Candle Sticks - Pr.**
- \_\_\_\_\_ 322. M - 10 1/2" Florentine Candle Stick
- \_\_\_\_\_ 323. Very Pretty M - Collar Base, Ruffled Peacock & Grape Bowl
- \_\_\_\_\_ 324. M - Whimsey N Grape & Cable Hat
- \_\_\_\_\_ 325. P - N Singing Birds Mug
- \_\_\_\_\_ 326. M - N Singing Birds Mug
- \_\_\_\_\_ 327. M - Stork in Rushes Mug - Above Average
- \_\_\_\_\_ 328. Above Average B - Orange Tree Mug - 3 1/4" Top - 3" Base
- \_\_\_\_\_ 329. M - Orange Tree Mug - 3 1/4" Top - 3" Base
- \_\_\_\_\_ 330. Dark, Rich M - 7 1/4" April Showers Vase - Peacock Tail Int.
- \_\_\_\_\_ 331. **Deep B - Squatty 6" April Showers Vase - 4 3/4" Top - 3 1/2" Base**
- \_\_\_\_\_ 332. B - 7 1/4" Rustic Vase - 4 3/8" Top
- \_\_\_\_\_ 333. **Scarce P.O. - J.I.P. Corinth Vase - Opal Top to Bottom of Ribs**
- \_\_\_\_\_ 334. **Moonstone - Rare J.I.P. Corinth Vase - Pastel Butterscotch Overlay**
- \_\_\_\_\_ 335. **Yellow Amber - J.I.P. Corinth Vase - Beautiful Silvery Irid.**
- \_\_\_\_\_ 336. **Teal - J.I.P. Twisted Corinth Vase**
- \_\_\_\_\_ 337. PO - Dugan 6" Pinched Swirl Vase
- \_\_\_\_\_ 338. M - 8" Imp. Smooth Panels Vase - 6" Top - 3 1/2" Base
- \_\_\_\_\_ 339. **Rare Smoke - 5" Imp. Squatty, Smooth Panel, 8 Ruffle Vase - Frosty**
- \_\_\_\_\_ 340. **G - C.R.E. 8" Butterfly & Berry Vase - Scarce Color & Shape**
- \_\_\_\_\_ 341. B - 8 3/4" Butterfly & Berry Vase - Very Pretty
- \_\_\_\_\_ 342. B - 8" Butterfly & Berry Vase - Very Pretty
- \_\_\_\_\_ 343. **Rich PO - 9 1/4" Pulled Loop Vase - Beautiful Example**
- \_\_\_\_\_ 344. **Powder Blue Base - 10 1/2" Fenton, Fine Rib Vase - Marigold Overlay**
- \_\_\_\_\_ 345. B - 7 1/2" Dia. Pts. Vase
- \_\_\_\_\_ 346. **M - 16 1/4" Hobnail Variant, Multi Elec., Vase - 5 1/2" Top - 4" Base**
- \_\_\_\_\_ 347. **M - 14 1/2" Hobnail Variant Vase - 5" Flamed Top - 4" Base**
- \_\_\_\_\_ 348. **Super G - 15 3/4" Hobnail Variant Multi Elec. Vase - 5" Top - 4" Base**
- \_\_\_\_\_ 349. **P - 14 1/2" Hobnail Variant Vase - Radium Elec. - 4 7/8" Top - 4" Base**
- \_\_\_\_\_ 350. **Rare B - 15 1/2" C.R.E. Top Spearhead & Rib Vase - Gorgeous Multi Elec.**
- \_\_\_\_\_ 351. **Equally As Rare G - 15 1/4" Spearhead & Rib Vase**



- \_\_\_\_\_ 352. Great Smoke - 12<sup>3</sup>/<sub>8</sub>" Rippled Vase - 4<sup>5</sup>/<sub>8</sub>" Top - 3<sup>3</sup>/<sub>8</sub>" Base
- \_\_\_\_\_ 353. P - 8<sup>3</sup>/<sub>4</sub>" Ripple Vase - 6" Flared Top - 3<sup>1</sup>/<sub>4</sub>" Base - Super Elec.
- \_\_\_\_\_ 354. Aqua - 9" Swung Ripple Vase
- \_\_\_\_\_ 355. Radium M - 11<sup>1</sup>/<sub>4</sub>" Beaded Bulls Eye Vase - 5" Top
- \_\_\_\_\_ 356. G - 12", 4 Pillars Vase - Adv. Howard Furniture - Very Scarce Vase
- \_\_\_\_\_ 357. G - 10<sup>1</sup>/<sub>2</sub>" N Beautiful Diamond Points Vase - 4<sup>1</sup>/<sub>2</sub>" Top
- \_\_\_\_\_ 358. M - Imp. Loganberry Vase - Beautiful & Hot
- \_\_\_\_\_ 359. B - C.R.E. 10" Rustic Vase - 5" Top
- \_\_\_\_\_ 360. G - N 10<sup>1</sup>/<sub>4</sub>" Tree Trunk Vase
- \_\_\_\_\_ 361. B - 10<sup>1</sup>/<sub>4</sub>" Flute Vase
- \_\_\_\_\_ 362. B - 13<sup>1</sup>/<sub>4</sub>", Beautiful, April Showers Vase - Plain Interior
- \_\_\_\_\_ 363. G - Scarce Fluffy Peacock Tumbler
- \_\_\_\_\_ 364. B - Dugan Peacock at Fountain Tumbler
- \_\_\_\_\_ 365. P - N Raspberry Tumbler
- \_\_\_\_\_ 366. W - Dugan Floral & Grape Tumbler
- \_\_\_\_\_ 367. M - Floral & Grape Tumbler - Dugan
- \_\_\_\_\_ 368. P - Singing Birds Tumbler
- \_\_\_\_\_ 369. B - Stork in Rushes Tumbler - A or B
- \_\_\_\_\_ 370. P - Vineyard Tumbler
- \_\_\_\_\_ 371. B - Lattice Band, Stork in Rushes Tumbler - Base Chip
- \_\_\_\_\_ 372. M - 10<sup>1</sup>/<sub>2</sub>" Beautiful Radium Parlor Panels Vase
- \_\_\_\_\_ 373. M - 9<sup>1</sup>/<sub>2</sub>" J.I.P., Mid Size, Morning Glory Vase - 4" Base
- \_\_\_\_\_ 374. M - 12<sup>1</sup>/<sub>2</sub>" Beaded Bulls Eye Vase - Radium
- \_\_\_\_\_ 375. M - C.R.E. 9<sup>3</sup>/<sub>4</sub>" Knotted Beads Vase - Beautiful Example
- \_\_\_\_\_ 376. A - 10" Knotted Beads Vase - Scarce Color
- \_\_\_\_\_ 377. G - 11<sup>1</sup>/<sub>2</sub>" Beautiful Knotted Beads Vase - Scarce Color
- \_\_\_\_\_ 378. Great M - 10" N Thin Rib Vase
- \_\_\_\_\_ 379. P - 10<sup>3</sup>/<sub>4</sub>" N Thin Rib Vase
- \_\_\_\_\_ 380. Scarce G - 9<sup>1</sup>/<sub>4</sub>" Fenton Flute Vase
- \_\_\_\_\_ 381. M - 10" Fenton Flute Vase
- \_\_\_\_\_ 382. M - N 9<sup>1</sup>/<sub>4</sub>" Tree Trunk Vase
- \_\_\_\_\_ 383. M - 6 Paneled (?) Candle Sticks
- \_\_\_\_\_ 384. M - 5<sup>1</sup>/<sub>4</sub>" Dia. Star & File Rose Bowl
- \_\_\_\_\_ 385. Scarce M - Golden Grapes Rose Bowl
- \_\_\_\_\_ 386. M - Luster and Clear Rose Bowl
- \_\_\_\_\_ 387. Frosted Block, 4<sup>1</sup>/<sub>4</sub>" dia., Rose Bowl
- \_\_\_\_\_ 388. Checkerboard Ash Tray
- \_\_\_\_\_ 389. Contemporary Ice G - L.I.G. Tiger Lily, 7 Piece, Water Set
- \_\_\_\_\_ 390. Contemporary P - Covered Turkey Dish
- \_\_\_\_\_ 391. Contemporary Vas. Opal - Signed D.B.S. Farmyard C.R.E. Chop Plate
- \_\_\_\_\_ 392. Contemporary Aurora Jewels Blue, Lge., I.G. Corn Vase - Rare Find
- \_\_\_\_\_ 393. Contemporary P - S-Mark, Whirling Star Cream & Sugar
- \_\_\_\_\_ 394. Contemporary Green Opal - Fenton Drapery Whimsey Handled Basket
- \_\_\_\_\_ 395. Contemporary P - Fenton, Mini, Epergne - Single Lily
- \_\_\_\_\_ 396. Contemporary Saph. - Fenton, 6<sup>3</sup>/<sub>4</sub>" Dia. Whirling Star Compote

- \_\_\_\_\_ 397. Contemporary P - Signed S, 9" Ohio Star Vase
- \_\_\_\_\_ 398. Contemporary Aqua O - Fenton Lily of Valley Rose Bowl
- \_\_\_\_\_ 399. Contemporary P - Signed S, Daisy & Button Toothpick Holder
- \_\_\_\_\_ 400. Contemporary G - I.G., 3 in 1 Pattern, Toothpick Holder
- \_\_\_\_\_ 401. Contemporary P - Miniature Fenton Rooster Paper Weight
- \_\_\_\_\_ 402. Contemporary P - Miniature Fenton Rabbit Paper Weight
- \_\_\_\_\_ 403. Contemporary P - Pattern Glass (?) Fenton Cuspidor
- \_\_\_\_\_ 404. Contemporary Teal - 8<sup>1</sup>/<sub>4</sub>" Veined Leaf Shaped Dish

**CARNIVAL GLASS AUCTIONS  
1999 CALENDAR OF EVENT  
June 19, 1999  
Eastern Collection**

**CALL NOW TO SCHEDULE YOURS - 1 PC. OR 1,000**

**BOOKING FALL AUCTIONS AS YOU READ**

For Free Color Catalogs & Information Write:  
Mickey Reichel

516 Third Street, Boonville, MO 65233-1536  
or Call: 660-882-5292 days or 660-882-5283 evenings

**NOTICE:**

Let me know if you're interested in  
John Britt's Contemporary Carnival  
and Assorted Tumbler Auction.

(All Types & Colors)

**2-Day Event**

**May 22 & 23, 1999**

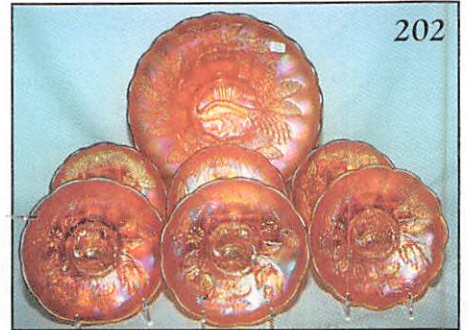
**FREE LISTINGS TO BE MAILED  
BY REQUEST ONLY**

*Thanks Mickey*

If you haven't been to Boonville, Missouri and attended a Mickey Reichel Auction, I'm extending a special invitation to one of our very best yet.

*Thank You, Mickey*





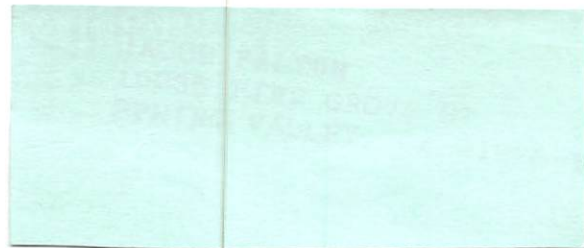
**MICKEY REICHEL**  
**ANTIQUE & AUCTION, L.C.**  
516 THIRD STREET  
BOONVILLE, MO 65233-1536



FIRST CLASS MAIL



SPECIAL INVITATION TO:



501