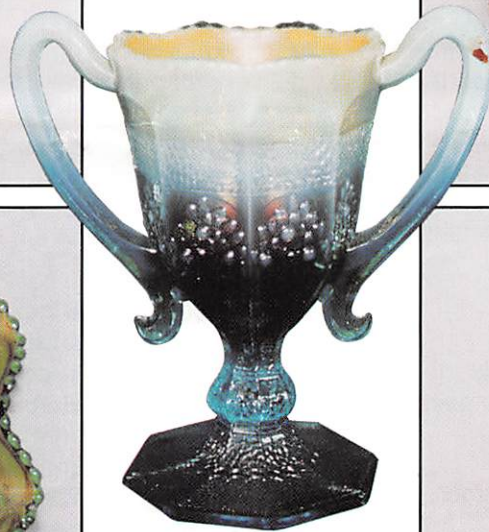


H.O.A.C.G.A. Convention
AUCTION

Floyd and Cecil Whitley Collection



Saturday, April 24, 1999 – 9:30 A.M.

Embassy Suites - 7640 NW Tiffany Springs Parkway

Kansas City, Missouri

JIM and JAN SEECK

Seeck Auctions

515-424-1116

Heart of America Carnival Glass Club Convention Auction

Saturday, April 24, 1999 -- 9:30 am

Embassy Suites - Kansas City, Missouri

When you think about the top collections in this country, one of the names we think of is the Whitley Collection. Floyd and Cecil have collected for many years and have amassed one of the finest Carnival Glass collections in the country. We are very pleased to be offering at this years HOACGA convention part of their collection. There are 270 outstanding pieces of rare and desirable glass with top rarities and great quality. This is the sale of the year, an opportunity you won't want to miss!

The Embassy Suites is only 5 minutes from the Kansas City International Airport. Shuttle service is available from the motel.

PREVIEW: Friday evening.

HOACGA Convention Information: Contact HOACGA President Robert Grissom at (816)356-5320.

RESERVATIONS: Call (816)891-7788 (Please ask for the HOACGA Convention block of rooms)

TERMS: Cash. Checks accepted with proper I.D.

NO BUYER'S PREMIUM.

ABSENTEE BID POLICY

1. Write-in bids will be accepted by sending the numbers of the item(s) desired and the amount bid on each to:
Seeck Auctions, PO Box 377, Mason City, Iowa 50402.
2. If known by Auction Company, bids may be done over the telephone. (515)424-1116.
3. There is a \$5 handling charge for each successful bid. Shipping and insurance charges are additional.
4. Bidders will be notified by phone if their bid(s) are successful. This call will be made 1 - 3 days after the auction.
5. Please have all bids in by Mon., April 19th. All bids (by mail, phone or email) after this date may not be carried out.
6. Please place bids in the following increments: \$1 to \$300 - \$5 increments \$300 up - \$25 increments.
7. **If you do not receive an item that sold for less than your bid, assume we cancelled your bid because the piece of glass had below average color, manufacture problem, damage or was not listed correctly.**
8. To receive price lists send: \$20 -- for this auction and next 7 auctions
\$5 -- for only this auction or individual auction (please specify)

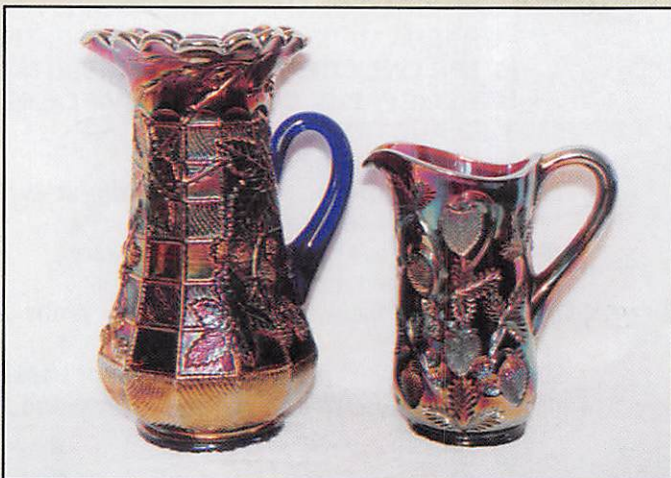
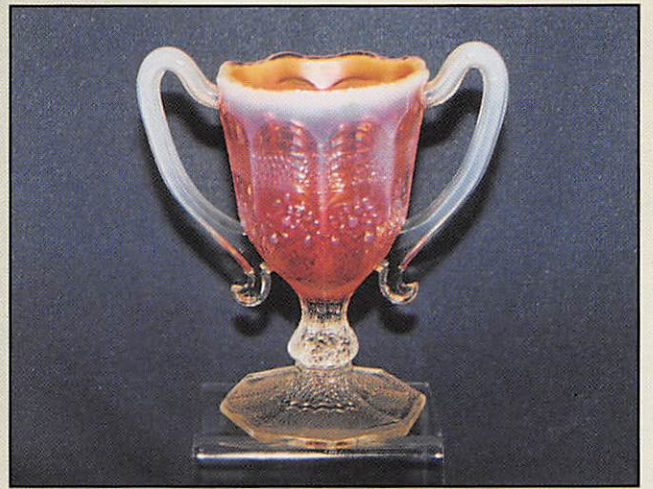
Send to the above address. (please allow 2 - 3 weeks delivery for price lists)(Make checks payable to: Jan Seeck)

You may now email us with your absentee bids! Our email address is: seeckauction@willowtree.com

Continue to include the numbers of the item(s) you would like to bid on and amount bid on each, please include your telephone number. ALSO visit us at our website: <http://www.willowtree.com/~seeckauction>

*** Email Bids must be in by Monday, April 19th ***

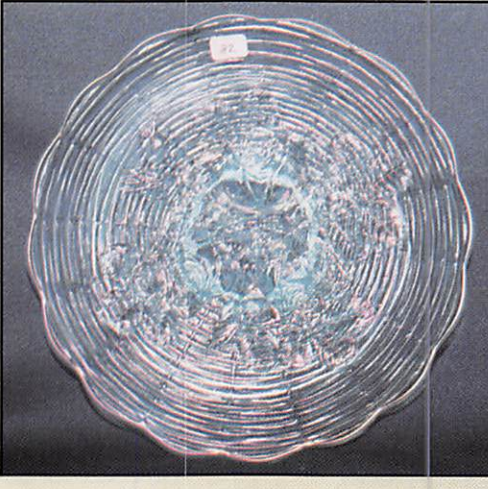
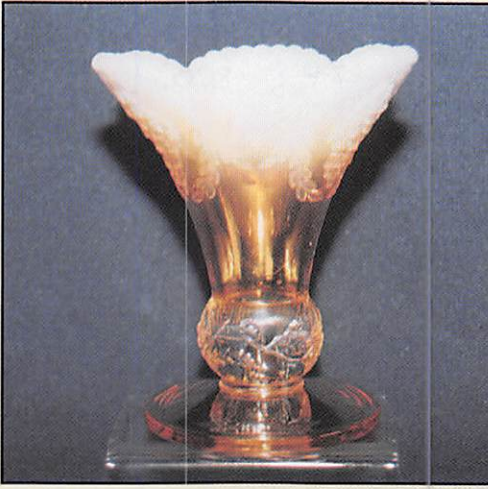
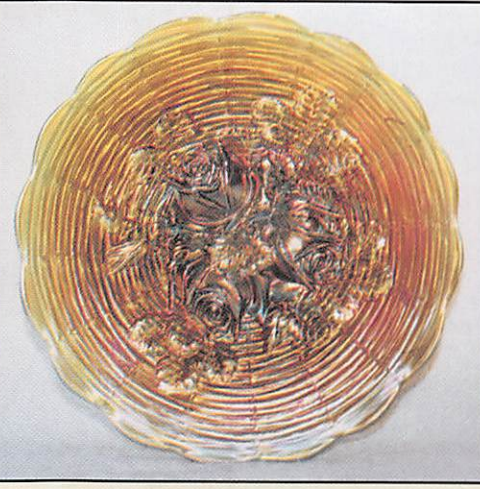
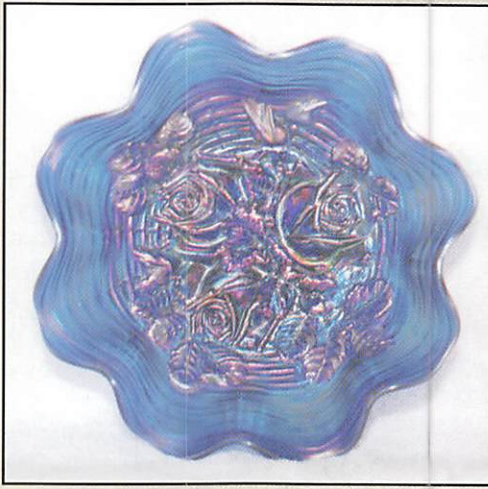
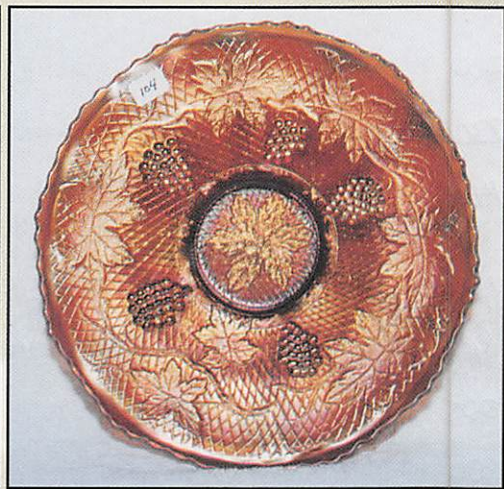
- | | | | |
|-------------|--|--------------|---|
| <u>10</u> | 1. LBJ hat - marigold | <u>1600</u> | 17. Blackberry Block tankard water pitcher - blue - super example of a rare tankard, as nice as they get |
| <u>55</u> | 2. Big Butterfly hatpin - dark | <u>250</u> | 18. Blackberry Block tankard water pitcher - marigold - dark from top to bottom, super and scarce (cracked handle) |
| <u>55</u> | 3. Tufted Throw Pillow hatpin - dark | <u>130</u> | 19. Fisherman's mug - marigold - scarce |
| <u>75</u> | 4. Rooster Hatpin - teal green - has painted background | <u>400</u> | 20. Fenton's Peacock at Urn 9" plate - blue - scarce and nice |
| <u>155</u> | 5. Enameled atomizer - marigold | <u>1100</u> | 21. Fenton's Peacock at Urn 9" plate - marigold - dark and pretty, scarce |
| <u>90</u> | 6. Grapes & Leaves miniature creamer - marigold - scarce | <u>550</u> | 22. Fenton's Peacock at Urn 9" plate - marigold - not as dark but has super irid. - Girl |
| <u>55</u> | 7. Miniature Mug toothpick - marigold | <u>80</u> | 23. Footed toothpick - marigold |
| <u>20</u> | 8. Fenton's Nut cup - marigold - deep example | <u>55</u> | 24. Wine & Roses wine glass - marigold |
| <u>20</u> | 9. Fenton's Nut cup - marigold - flared example | <u>15000</u> | 25. ORANGE TREE LOVING CUP - AQUA OPAL - ONLY ONE KNOWN AT THIS TIME, IS UNBELIEVABLE, LOTS OF OPAL, AN OPPORTUNITY TO BUY ONE OF THE TOP PIECES IN THE CARNIVAL GLASS FIELD, DON'T MISS OUT, WOW!!!! |
| <u>5800</u> | 10. INVERTED STRAWBERRY MILK PITCHER - AMETHYST - FANTASTIC IRID. ON THIS EXTREMELY RARE PIECE, NOT MANY KNOWN, WOW! | <u>7000</u> | 26. ORANGE TREE LOVING CUP - PEACH OPAL - ALSO ONLY ONE KNOWN AT THIS TIME, PLENTY OF OPAL, ONE OF THE MOST DESIRED PEACH OPAL PIECES IN THE HOBBIE, WOW!!!! |
| <u>325</u> | 11. Miniature butterdish - marigold - cute | | |
| <u>900</u> | 12. Hearts & Flowers 9" plate - marigold - very pretty and very very scarce | | |
| <u>135</u> | 13. Little Barrel - marigold - dark and nice | | |
| <u>1250</u> | 14. M'BURG HOBNAIL SWIRL SPITTOON - AMETHYST - EXTREMELY RARE FLARED UP VERSION, MAKES IT MUCH TALLER, RARE WHIMSEY | | |
| <u>800</u> | 15. M'burg Hobnail Swirl spittoon - marigold - dark and very nice, rare | | |
| <u>45</u> | 16. Flute toothpick - marigold | | |



- 700 27. Orange Tree loving cup - light pale blue - has a clambroth coloring to it, only one I've seen like it
- 500 28. Orange Tree loving cup - white - very rare color for this piece, nice
- 500 29. Orange Tree loving cup - amethyst - very scarce color, and is as nice as I've sold, pretty
- 250 30. Orange Tree loving cup - green - very scarce color and very desirable
- 325 31. Orange Tree loving cup - blue - super pretty and scarce
- 45 32. Orange Tree loving cup - marigold - super pretty, chip on bottom of handle
- 1500 33. Jockey Club advertising ruffled bowl - amethyst - super pretty and rare
- 650 34. M'burg Hobnail Swirl 9 3/4" vase - green - very scarce, nice *Look At it - #225-9" 10" - #210 - 400*
- 2800 ~~3100~~ 35. Rose Show ruffled bowl - horehound - super rare color for this bowl, has fantastic irid. *R.Y.*
- 1400 36. Rose Show ruffled bowl - blue - super electric blue irid., very rare pretty, rare color
- 350 37. Corn bottle - smoke - scarce and very pretty
- 250 38. Corn bottle - marigold - dark & nice
- 250 39. Corn bottle - green - scarce
- 2800 40. Hobstar & Feather giant rosebowl - amethyst - super irid. on this extremely rare rosebowl, another great piece
- 225 41. Beaded Cable rosebowl - aqua opal - scarce
- 2500 42. 1914 Parkersburg Elk's bell - blue - super nice and very rare, a highly desired lettered piece
- 2900 43. 1911 Atlantic City Elk's bell - blue - also very rare and desirable, nice
- 2800 44. M'BURG OHIO STAR VASE - AMETHYST - VERY RARE AND DESIRABLE, NICE, SOME OF MY FAVORITE VASES *George Thomas*
- 2700 45. M'BURG OHIO STAR VASE - GREEN - VERY RARE AND DESIRABLE, VERY NICE
- 3000 46. M'BURG OHIO STAR VASE - MARIGOLD - DARK AND VERY RARE, AS NICE AS THEY COME, THE END OF A GREAT SET OF THREE
- 50 47. Pastel swan salt - celest blue
- 2700 48. Thistle 9" plate - green - rare and super, a top Fenton plate
- 95 49. Crackle Salt and Pepper shakers - smoke - rare, not many sets known
- 10,000 50. FARMYARD SQUARE RUFFLED BOWL - GREEN - THAT'S RIGHT, IT REALLY IS GREEN, ONE OF ONLY 2 OR 3 KNOWN, HAS PRETTY GOLD HIGHLIGHTS AND REALLY SHOWS THE GREEN COLOR WELL, NO HARM SMALL MANUFACTURE HOLE OFF OUTSIDE EDGE WERE IT DIDN'T FILL IN, DOES NOT EFFECT THE LOOK OF THE PIECE, WOULD TOP OFF ANY COLLECTION, UNBELIEVABLE!!!!
- 235 51. Grape & Cable pin tray - green *Dash*
- 2100 52. Vintage 9" plate - marigold - extremely rare plate, not many around, nice even irid.
- 850 53. Vintage 9" plate - amethyst - extremely rare plate, has minor pinpoint on outside edge, nice
- 225 54. Tornado ribbed vase - purple - scarce, has chip on base
- 625 55. Grape & cable dresser tray - green - very scarce and desirable, start of the upcoming set
- 350 56. Grape & Cable pin tray - green - scarce color and nice
- 275 57. Grape & Cable cologne bottles(2) - green - nice, choice *2nd - 250*
- 400 58. Grape & Cable hatpin holder - green - very nice example
- 300 59. Grape & Cable powder jar - green - nice
- 2600 60. Garden Path Variant chop plate - purple - extremely rare chop plate and pretty, some surface scratches on high points
- 425 61. Grape & Cable cracker jar - marigold - nice
- 2000 62. Lotus & Grape 9" plate - green - very rare and highly desirable, nice *Roy*
- 7700 63. Lotus & Grape 9" plate - blue - more rare than the green, plus nice
- 205 64. Grape & Cable cup and saucer - purple - scarce
- 1600 65. Stag & Holly spt ftd ruffled bowl - red - very rare and desirable, a must for red collectors *(DAM - chip too)*
- 125 66. Star of David & Bows dome ftd ruffled bowl - lavender - nice and very scarce in this color
- 1400 67. Stippled Grape & Cable Variant 9" plate w/ribbed back - marigold - dark and nice, rare *new \$200*
- 425 68. M'burg Leaf & Little Flowers round compote - green - radium and nice
- 500 69. M'burg Leaf & Little Flowers ruffled compote - amethyst - radium and nice
- 500 70. M'burg Leaf & Little Flowers ruffled compote - marigold - radium, dark and super
- 700 71. Heart & Vine 9" plate - blue - super pretty and scarce, a nice plate
- 450 72. Coin Dot deep round bowl - blue - unbelievably super, it glows!
- 2800 73. Wishbone ftd 9" plate - marigold - super dark and extremely rare, nice *1500, 2300, \$350 down, \$100-170, \$700, \$400, \$650*
- 85 74. Ski Star dome ftd CRE round bowl - peach opal
- 7500 75. FEATHERED SERPENT LADIES SPITTOON - GREEN - MADE FROM THE SAUCE, THIS IS THE ONLY REPORTED EXAMPLE, IS UNBELIEVABLY CUTE, A TOP PIECE IN THIS AUCTION *(BWS Fenton)*
- 305 76. Purse - purple - nice
- 450 77. Big Fish 3 in 1 edge bowl - amethyst - very rare and desirable, satin - nick
- 575 78. Elephant 9 3/4" vase - marigold - very desirable and nice
- 425 79. Rambler Rose water pitcher - blue - pretty and scarce
- 2800 80. Rose Show 9" plate - lime green or vaseline - extremely rare color, super pretty and *pinpoint*

highly desirable

- 2100 81. Rose Show 9" plate - green - very rare color and nice, pretty irid.
- 2300 82. Rose show 9" plate - ice blue - very pretty and rare, a nice plate
- 1400 83. Rose Show 9" plate - purple - very pretty and rare, a lot of purple examples are not pretty, this one is
- 1600 84. Rose Show 9" plate - blue - very rare and desirable, nice [REDACTED]
- 400 85. Rose Show 9" plate - white - a little deep but nice
- 825 86. Stippled Rays IC shaped sauce - amberina red - scarce
- 1800 87. Luster Rose fruit bowl - red - rare and desirable, nice
- 650 88. Orange Tree 9" plate - blue - super stretchy irid. very pretty, very scarce [REDACTED]
- 300 89. Orange Tree 9" plate - marigold - pretty
- 1700 90. Zipper Loop small size finger lamp - \$1000-96
• marigold - super dark and rare, color goes from top to bottom \$2000 [REDACTED]
- 425 91. Iris & Herringbone demitasse cup & saucer - marigold - extremely rare miniature
- 3100 92. M'BURG DOLPHINS COMPOTE - GREEN - SUPER RARE AND EXTREMELY DESIRABLE, VERY PRETTY \$4500
- 235 93. Strawberry 9" plate w/BW back purple - nice
- 145 94. Strawberry 9" plate w/plain back - marigold - nice BERRY'S RUBBED OFF
- 1000 95. Wishbone & Spades 6" plate - purple - 9-150-750 (98)
fantastic irid. on this scarce plate 9-140-500(97)
- 900 96. Four Flowers chop plate - purple - 5-175-800(96)
extremely rare item, has stretchy irid, nice 7-225-900
- 700 97. Four Flowers chop plate - peach opal - very scarce and desirable
- 700 98. Daisy Squares rosebowl w/tri-cornered [REDACTED] and
CRE top - green - rare shape for this piece
- 500 99. Kittens ruffled bowl - aqua - very rare color
- 4000 100. GRAPE & CABLE LADIES SPITTOON - GREEN - MADE FROM THE SUGAR BOWL, ONLY 2 OR 3 KNOWN, HAS MINOR ROUGHNESS ON BEADING AROUND BASE, EXTREMELY RARE AND HIGHLY DESIRABLE, WOW!!!!!!
- 165 101. M'burg Peacock IC shaped sauce - amethyst - satin and nice
- 2000 102. Nippon 9" plate - green - very rare plate, and very pretty
- 300 103. Blackberry Open Edge two sides up hat - red - pretty and scarce
- 2300 104. Concord 9" plate - amethyst - very rare and desirable plate, has pretty even irid.
- 1000 105. Concord 9" plate - marigold - a little light in color but very rare and desirable
- 900 106. Pickle Castor - marigold w/enameling - very rare, Presznick book #4
- 1200 107. Rose Show Variant 9" plate - marigold - very rare and desirable, nice even irid. Final
- 450 108. M'burg Nesting Swan ruffled bowl - amethyst - radium & nice
- 1300 109. N's Stippled Peacock at Urn master IC bowl - marigold - very flat, lots of pink irid.
- 1200 110. N's Stippled Peacock at Urn master IC bowl - blue - very rare color & nice
- 325 111. Orange Tree standard size mug - red - nice
- 1000 112. 1910 Detroit Elk's ruffled bowl - green - super nice bowl, tough in green
- 800 113. 1910 Detroit Elk's ruffled bowl - amethyst - hard to find and a nice one
- 225 114. Peacocks PCE bowl w/ribbed back - pastel marigold - pretty
- 1700 115. Peacock & Grape 9" plate - blue - very rare color for this collar based plate, not many around
- 500 116. Peacock & Grape 9" plate - marigold - very scarce & very pretty
- 550 117. M'burg Hobstar & Feather heart shaped dish - marigold - a rare little piece, neat
- 2500 118. Strawberry Scroll water pitcher - blue - rare pitcher & highly desirable, a great shape!
- 275 119. Leaf & Beads rosebowl - aqua opal - nice
- 3750 120. POPPY SHOW 9" PLATE - GREEN - EXTREMELY RARE COLOR & HIGHLY DESIRABLE, PRETTY!
- 900 121. Poppy Show 9" plate - blue - has gold & silver irid.
- 800 122. Poppy Show 9" plate - white - very pretty w/super irid., nice & flat
- 700 123. Grapevine Lattice 7" plate - purple - spectacular blue irid., has minor pinpoint on base
- 500 124. Fish 9 1/2" vase w/frosted background - marigold - signed JAIN, scarce
- 8000 125. WHEAT SWEATMEAT - PURPLE - NOT MANY KNOWN IN ANY COLOR, BELIEVED TO BE THE ONLY COMPLETE AMETHYST ONE, A VERY RARE OPPORTUNITY TO BUY A GREAT PIECE OF GLASS
- 450 126. Enameled Clovers tankard water pitcher - marigold - only one I've ever seen with this enameling [REDACTED]
- 1200 127. M'burg Hobnail spittoon - green - extremely rare color, not many known in green, minor no harm buffed spot on edge
- 900 128. M'burg Hobnail spittoon - amethyst - nice example, very rare
- 475 129. Isaac Benesch & Sons ruffled adv. bowl - amethyst - nice & scarce
- 3600 130. PETER RABBIT 9" PLATE - GREEN - EXTREMELY RARE PLATE & HIGHLY DESIRABLE, A TOP FENTON PLATE
- 5000 131. PETER RABBIT 9" PLATE - BLUE - EXTREMELY RARE COLOR, PROBABLY MORE RARE THAN THE GREEN, HAS EXCELLENT IRID.
- 400 132. Three Fruits 9" plate w/plain back - green - pretty
- 1750 133. Kittens cup & saucer - blue - very rare set in this color, nice
- 325 134. Kittens toothpick - blue - very scarce

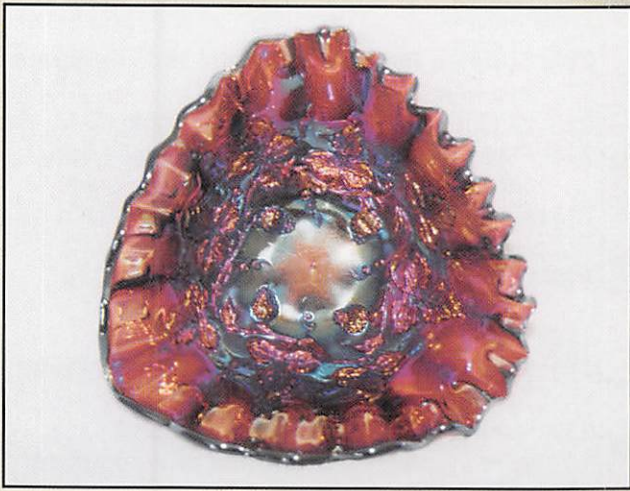




- 5500 135. M'BURG ROSE COLUMNS VASE - AMETHYST - RADIUM & BEAUTIFUL, A GREAT M'BURG VASE
- 5500 136. M'BURG ROSE COLUMNS VASE - MARIGOLD - DARK & SUPER, QUALITY RADIUM IRID, FANTASTIC!
- 4000 137. M'BURG ROSE COLUMNS VASE - GREEN - HAS AN AQUA TINT IN THE BASE GLASS, EXTREMELY RARE & WONDERFUL
- 525 138. File water pitcher - marigold - a rare pitcher, nice
- 2600 139. Stippled Strawberry 9" plate - marigold - (825 clam) ultra dark & super, as pretty as they get 1900
- 1400 140. Stippled Strawberry 9" plate - purple - outstanding example for these, extremely rare & desirable 525, 575, 400, 700
- 400 141. Hand 8 1/4" vase - marigold - by JAIN, very scarce & desirable
- 300 142. Hand 5" vase - marigold - also very scarce & desirable, by JAIN
- 1600 143. Orange Tree IC shaped bowl - red - cherry red & highly desirable
- 425 144. Three Row Open Edge 2 sides up basket - ice blue - scarce & pretty
- 1050 145. Embroidered Mums ruffled bowl - ice green - has pretty irid., & extremely rare, a nice bowl
- 250 146. Nautilus sugar bowl - purple - signed Northwood in script
- 3000 147. TOMAHAWK - BLUE - ONE OF TWO OLD TOMAHAWKS KNOWN, A HIGHLY DESIRABLE NOVALTY
- 650 148. Stippled Grape & Cable Variant 9" plate - purple - this is stippled all the way to the outside edge, pretty
- 650 149. M'burg Cosmos 6" plate - green - only one I've ever seen flattened into a plate, radium & nice
- 17000 150. PULLED HUSK CORN VASE - PURPLE - OUTSTANDING EXAMPLE OF AN ULTRA RARE VASE, VERY PRETTY IRID. WOW, WOW, WOW...
- 275 151. Octagon large water pitcher - marigold - dark & super
- 1900 152. M'burg Elk's paperweight - purple - extremely rare, minor pinpoint on base, much better condition than most
- 500 153. Grape & Cable whiskey decanter & 4 shot glasses - marigold - a very pretty set, minor pinpoint where stopper enters bottle
- 800 154. Captive Rose 9" plate - green - very scarce plate & nice
- 350 155. Basketweave Open Edge ruffled basket - red - nice
- 1100 156. Spector's Department Store Heart & Vine 9" plate - marigold - very pretty, as nice as these get
- 400 157. Fishscale & Beads 7" plate - amethyst - sov. of Brandon, VT, pretty!
- 1700 158. M'burg Hanging Cherries milk pitcher - marigold - extremely rare & highly desirable, has some manufacture roughness on base
- 295 159. Featherstitch IC shaped bowl - blue - extremely flat, some may call this a plate
- 1700 160. Inverted Strawberry spittoon - green - very rare & highly desirable, a Cambridge classic
- 1200 161. Inverted Strawberry spittoon - marigold - nice & dark
- 150 162. Daisy Cut bell - marigold
- 1400 163. Holly ruffled bowl - red - cherry red color & desirable
- 1900 164. Fanciful 9" plate - purple - stunning, a beautiful plate!
- 1000 165. M'burg Seacoast pin tray - marigold - radium & pretty, a very rare dish
- 1300 166. M'burg Seacoast pin tray - amethyst - radium & super, a dandy 7/1000-1300 electr
- 850 167. Stippled Three Fruits 9" plate - blue - has electric blue highlights, rare color & nice (3) 500-1000
- 2100 168. Checkerboard water pitcher - amethyst - extremely rare pitcher, has minor heat check in base, a top pitcher 400-825 (6) 725-700 (3) 325-1000 (8)
- 400 169. Grape & Cable Variant 9" plate w/BW back - green - fantastic! (4) 850-1500 1050, 1200
- 2200 170. Coral 9" plate - marigold - super pretty irid, a lot better than most of these, a rare plate
- 1100 171. Waterlily ftd ruffled sauce - red - cherry & nice, very pretty
- 1700 172. Greek Key 9" plate w/BW back - marigold - very pretty & highly desirable 650-1000 (4) +9: 13
- 800 173. Holly 9" plate - amethyst - extremely rare color & nice
- 450 174. Diamond Points bushel basket - blue - has minor chip on base, very rare basket & nice
- 1100 175. Diamond Rib whimsey 5 3/4" vase - green - pinched in at top & flares out, chip on top edge, rare
- 450 176. Scroll Embossed mini compote - purple - fabulous irid.!
- 600 177. Stippled Grape & Cable 9" plate - green - fantastic, super pretty irid.!
- 1000 178. Peacock Tail 6" plate - blue - best example I've seen, actually has nice irid. on the face, most do not
- 300 179. Apple Blossom Twigs 9" plate - blue - very rare plate
- 1200 180. LAUREL OR WISTERIA 5" FTD VASE - PEACH OPAL - ONE OF TWO KNOWN, A PRETTY SHAPE WITH LOTS OF OPAL, WOW!
- 400 181. Scroll Embossed 9" plate - purple - super
- 425 182. M'burg Sunflower pin tray - green - minor pinpoint on one leaf, very scarce
- 850 183. M'burg Sunflower pin tray - amethyst - very nice, very scarce
- 1300 184. M'burg Sunflower pin tray - marigold - might be the rarest color, nice
- 900 185. UNLISTED GRAPE PATTERN LADIES

SPITTOON W/TRI-CORNERED TOP -
MARIGOLD - VERY UNUSUAL, ONLY ONE
I'VE EVER SEEN, NEAT

- 550 186. M'burg Trout & Fly ruffled bowl - marigold
- radium & nice
- 800 187. Autumn Acorn 9" plate - green - extremely
rare & nice, tough to get
- 2000 188. Eagle Furniture Co. double handgrip adv.
plate - amethyst - a pretty adv. piece
- 3500 189. M'burg Seaweed 9" plate - green -
extremely rare plate, not many known,
edges slightly turn up, all do
- 325 190. Concord ruffled bowl - green - very pretty &
scarce
- 1800 191. Stag & Holly large size ruffled bowl - ^{650-OR}
amberina w/red streaks - extremely rare ^{3100-AMBERINA}
piece, one of two that I've seen
- 325 192. Windflower 9" plate - blue - scarce in blue
- 1300 193. N's Peacock at Urn chop plate - purple - as
good of one that I've ever seen, a real
beauty
- 650 194. Wickerwork 8" plate - amethyst - very scarce
plate
- 225 195. Wickerwork 8" plate - marigold - also very
scarce plate
- 1300 196. Rose Show 9" plate - purple - extremely
rare & nice
- 1000 197. Grape & Cable candle lamp - green - very
desirable piece, nice
- 1000 198. Grape & Cable candle lamp - purple - very
pretty, also highly desirable
- 80 199. Grape Delight nut bowl - purple
- 8000 200. FARMYARD 3 IN 1 EDGE BOWL - PURPLE
- OUTSTANDING! THIS IS A SCREAMER,
AS PRETTY OF A 3 IN 1 EDGE BOWL
THAT WE'VE SOLD
- 155 201. Hawks or Steuben Ver-de-sol spittoon shape -
white
- 850 202. Good Luck 9" plate w/ribbed back - purple
- very pretty, a nice example of a scarce
plate
- 400 203. Good Luck 9" plate w/ribbed back - green -
scarce plate and nice, has nick on
horseshoe
- 225 204. N's Peacock at Urn IC sauce - purple - super
- 2500 205. NUART Homestead chop plate - amber -
super pretty & very rare, a highly desirable
plate, great mold work ^{JOYCE}
- 145 206. Smooth Panels ruffled compote - persian blue
opal - never seen one like it
- 1100 207. Hearts & Flowers 9" plate - marigold - very
pretty, very rare ^{800-1500(5), 900-1800(3), 825-1600(4)}
- 70 208. Persian Medallion 6" plate - marigold ^{(5) 800-2000}
- 1300 209. M'burg Poppy IC shaped compote - green -
fantastic radium irid. on this rare shaped
compote, for a M'burg collector, this is a
dream
- 3000 210. M'burg Poppy IC shaped compote -
amethyst - radium and fantastic, the dream
continues...
- 215 211. Acanthus chop plate - marigold
- 600 212. Stippled Rays sugar bowl - red - very rare
red item, not many around
- 85 213. Woodpecker wall pocket - marigold
- 700 214. Peter Rabbit ruffled bowl - marigold - very
rare and nice, has damage on one point
- 90 215. Miniature Fluted pitcher - marigold - chip on
bottom edge
- 450 216. Stippled Peacocks 9" plate - marigold -
super pretty and highly desirable
- 65 217. Heavy Grape 8" plate - green
- 1000 218. Panther ftd ruffled sauce - red - very pretty,
and very scarce
- 1400 219. Hearts & Flowers ruffled compote - ice
green - pretty irid. on this rare compote
- 800 220. Hearts & Flowers ruffled compote - aqua
opal - pretty butterscotch irid.
- 425 221. Hearts & Flowers ruffled compote - blue -
scarce and pretty
- 150 222. Hearts & Flowers ruffled compote - purple -
has minor repaired chip on base - pretty
- 150 223. Hearts & Flowers ruffled compote - marigold -
nice
- 225 224. Hearts & Flowers ruffled compote - white
- 3200 225. DOUBLE STAR LADIES SPITTOON -
GREEN - ONLY ONE KNOWN, A
FABULOUS WHIMSEY, FANTASTIC!
- 200 226. Wishbone & Spades 6" plate - purple - scarce
- 1000 227. Round Up 9" plate - purple - a fantastic
example
- 450 228. Round Up 9" plate - peach opal - super
pretty and scarce
- 155 229. Grape & Cable Variant ruffled bowl - purple
- 1600 230. Grape & Cable sweetmeat - marigold - very
rare, very dark, very nice ^{1200, 1500, 1600}
- 285 231. Grape & Cable sweetmeat - purple - pretty
example
- 600 232. Acorn ruffled bowl - red - very scarce and
desirable
- 1300 233. Peacock & Grape ruffled bowl - red -
very rare and nice
- 185 234. Peacock & Grape ruffled bowl - lime green -
scarce color
- 10 235. Fine Cut & Roses rosebowl - amethyst -
minor nick on foot ^{to crack across bottom}
- 1100 236. Springtime water pitcher - green - very
pretty example of a very rare and highly
desired pitcher
- 155 237. Holly ruffled compote - dark lime green -
different base color
- 1300 238. Davidson's Society Chocolates hand grip
advertising plate - amethyst - very scarce
and nice
- 125 239. Rococco vase - smoke - minor nick on base
- 550 240. Peacock & Grape 9" plate - marigold - very
pretty and scarce
- 135 241. Stork & Rushes 2 sides up hat - amethyst -
scarce item
- 1100 242. Grape & Cable candle lamp - green - very
rare and nice
- 500 243. Grape & Cable candle lamp - amethyst -
very nice example and rare



- 30 244. Band of Roses night bottle and underplate - marigold - scarce, no tumbler
- 55 245. Pineapple & Fan night bottle & underplate - marigold - very scarce, no tumbler
- 1400 246. M'burg Strawberry Wreath large tri-cornered crimped edge bowl - amethyst - fantastic radium multi-colored irid., super, and rare - nice on back
- 500 247. Grapevine Lattice 7" plate - purple - super pretty, sov. of Belle Plaine, Iowa
- 65 248. Persian Garden IC shaped sauce - white - nice
- 165 249. Kittens 4 sides up bowl - marigold - only 2 sets of kitties
- 4250 250. N's Peacock at Urn master IC bowl - green - extremely rare color, not many known, a very nice example, Wow!
- 1300 251. N's Peacock at Urn master IC bowl - ice blue - dark color w/very pretty irid., scarce item
- 175 252. Kittens cup & saucer - marigold - nice
- 160 253. Kittens plate - marigold - nice
- 165 ~~95~~ 254. Kittens 4 sides up bowl - marigold - nice
- 95 255. Kittens 2 sides up bowl - marigold - nice
- 155 256. Kittens ruffled bowl - marigold - nice
- 185 257. Kittens square toothpick - marigold
- 185 258. Kittens toothpick - marigold -
- 160 259. Kittens cereal bowl - marigold
- 1800 260. Peacocks 9" plate w/ribbed back - blue - electric & fantastic, as nice of one that we've sold, a double WOW!
- 1400 261. Peacocks 9" plate w/ribbed back - purple - pretty & very scarce
- 600 262. Peacocks 9" plate w/ribbed back - ice green - a dandy
- 115 263. Dimples wine glass - marigold
- 120 264. Engraved Leaf & Grape brandy - marigold
- 80 265. Butterfly pin tray - marigold
- 1600 266. Enameled 3" vase in metal holder - marigold
- 50 267. De Vilbiss enameled perfume - green - not carnival
- 25 268. Footed brandy sniffer - marigold
- 5 269. Miniature mug shotglass - marigold
- 25 270. Three Row toothpick - green - new or old?
- 40 271. Flash glass cordial w/engraved flower - red
272. Beauty Bud 7" vase - marigold
- 50 273. Flower frog - ice green
274. Wallpockets (2) - marigold - choice

Seeck Auctions

