

CARNIVAL GLASS AUCTION

Saturday, March 13, 1999 9:00 a.m.

Held Inside the Mickey Reichel Auction Center

Office: 660-882-5292 • Boonville, Missouri • Home: 660-882-5283

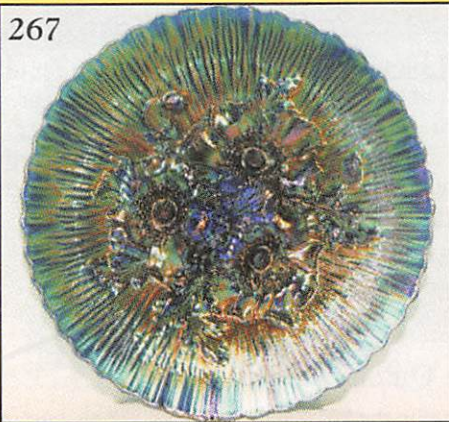


Direct e-mail: mreichel@undata.com



NEW WEB SITE ON: <http://www.woodsland.com/carnivalglass> • <http://www.woodsland.com/mickey>

267



50



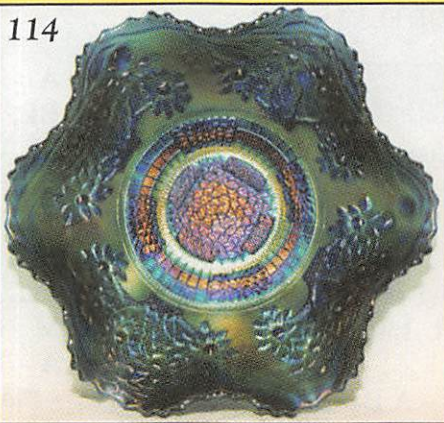
266



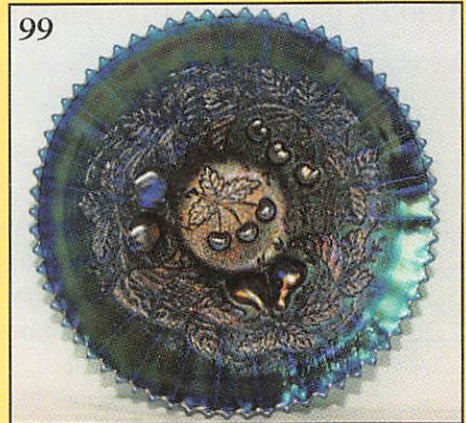
79



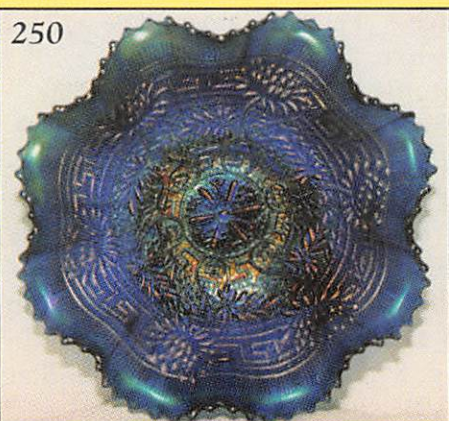
114



99



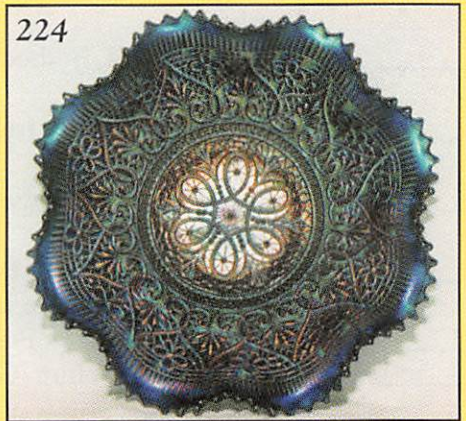
250



246



224



NO BUYERS PREMIUM

Held Inside the Mickey Reichel Auction Center

1 Mile North of I-70 on Hwy. 5, Exit 101, Boonville, Missouri • 20 Miles West of Columbia, MO on I-70

Preview Friday 12 p.m. - 6 p.m. and 7:30 a.m. - 9:00 a.m. Day of Auction

Make Reservations **EARLY** at one of these local motels:

Days Inn: 660-882-8624 • Comfort Inn: 660-882-5317 • Super 8: 660-882-2900

TEXAS COLLECTION: Elsie Shawyer and Preston Wells

Auction Consists of Rarity, Great Irid. and Variety

WRITE IN BIDS: If you are unable to attend the auction, we will be happy to accept absentee bids which must be received by THURSDAY, MARCH 11, 1999. Don't Delay.

FOR AUCTION PRICE RESULTS: Send \$3.00 and Large S.A.S.E. to 516 Third Street, Boonville, MO 65233-1536

PLEASE NOTE: There is a **\$5 handling charge for each successful bid which will be added to the selling price** for all write-in bids. This is in addition to the cost of postage, insurance and packing. Your write-in bid will be entered just as if you are present and bidding. **Successful bidders will be notified in 1 to 3 days by the auctioneer (so be sure to include your phone number).** Direct mail bids to Auctioneer Mickey Reichel, 516 Third Street, Boonville, MO 65233-1536. Terms: Cash or Check accepted with proper I.D. and Social Security Number and References. Announcements made day of the auction supercede all printed material. Not Responsible for Accidents or Sold Items. **No return on any items once they leave the Auction Center (No Exceptions).******

Call for additional information: 660-882-5292 days or 660-882-5283 evenings.

FAX: 660-882-5292 (evening hours start FAX transmission after beep)

NOTE: Read each line, Bold and Plain print. Huge Quality Selection.

MAIL BIDS: Items are bid on in perfect condition with average or above iridescence OR as listed in the brochures. Bids will not be carried out when damage on an item has been found during the auction.

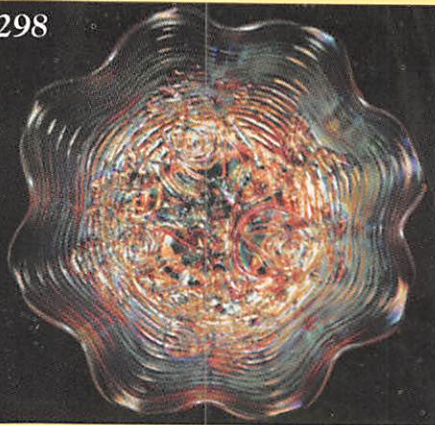
PEOPLE PRESENT AT AUCTION ARE RESPONSIBLE FOR FINDING ANY PINHEADS, WEAR, SPOTTINESS, MANUFACTURER'S DEFECTS OR ANY OTHER MINOR FLAWS, ETC.

WELCOME TO THE AUCTION

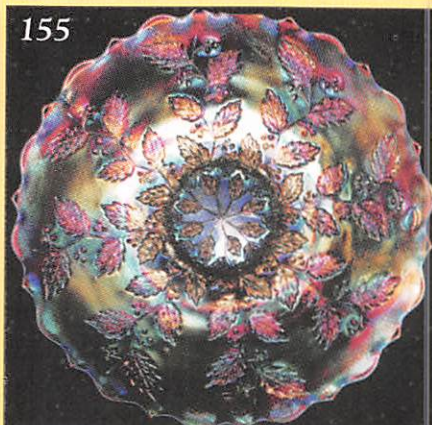
- | | |
|-------------------------------------------------------------------------------------------------------------------------------------------------------------------------------------------------------------------------------------------------------------------------------------------------------------------------------------------------------------------------------------------------------------------------------------------------------------------------------------------------------------------------------------------------------------------------------------------------------------------------------------------------------------------------------------------------------------------------------------------------------------------------------------------------------------------------------------------------------------------------------------------------------|-------------------------------------------------------------------------------------------------------------------------------------------------------------------------------------------------------------------------------------------------------------------------------------------------------------------------------------------------------------------------------------------------------------------------------------------------------------------------------------------------------------------------------------------------------------------------------------------------------------------------------------------------------------------------------------------------------------------------------------------------------------------------------------------------------------------------------------------------------------------------------------------------------------------------------------------------------------------------------------------------------------------------------------------------|
| <p>_____ 1. LAV - Ripple 9½" - 4" Base, 7½" Top - Super Mid-Size Vase</p> <p>_____ 2. P - 7¾" Mini Ripple Vase - Cutie</p> <p>_____ 3. M - 7" Mini Ripple Vase - Cutie</p> <p>_____ 4. A - 5½" Rd. Pine Cone Bowl - Great</p> <p>_____ 5. P - Elec. Imp. Diamond Lace Water Pitcher - The Best</p> <p>_____ 6. Amber - Imp. Pansy Nappy - A Beauty</p> <p>_____ 7. M - Crackle Pitcher w/lid and 5 Tumblers</p> <p>_____ 8. M - Bulbous Tree of Life Pitcher, 2 Tumblers</p> <p>_____ 9. M - 5¾" Tall Bulbous Rex Buttermilk Pitcher - Rare</p> <p>_____ 10. Olive - Loganberry Imp. Vase - Pretty - Scarce Color</p> <p>_____ 11. P.O. - 8" C.R.E. Single Flower Bowls - Choice A or B</p> <p>_____ 12. Lime - IG - <u>N</u> Acorn Burrs Punch Bowl Base - Super - Where is the Top?</p> <p>_____ 13. M - 7: Stippled Rays Plate - Nice</p> <p>_____ 14. M - Radium 6½" Imp. Grape Plate - Super</p> | <p>_____ 15. A - 6" Persian Medallion Plate - PL. - Bk, Scarce & Nice</p> <p>_____ 16. M - 6½" Persian Medallion Plate w/Orange Tree Reverse Pattern</p> <p>_____ 17. M - 6½" Persian Medallion Plate w/Pl. BK</p> <p>_____ 18. M - 6" Cherry Chain Plate w/Orange Tree Ext. Pattern</p> <p>_____ 19. M - 6¼" Pine Cone Plates - Choice A or B</p> <p>_____ 20. A - 7" Tri-Corner Beads & Flower Plate - Plain Interior - A Beauty</p> <p>_____ 21. P.O. - 7" Tri-Corner Beads & Flower Plate - Plain Interior</p> <p>_____ 22. W - Scarce 7" Persian Garden Plate w/Pool of Pearls Ext.</p> <p>_____ 23. W - 7" Ruffled Grape Vine Lattice Plate</p> <p>_____ 24. M - Radium 6¾" Grape Vine Lattice Plate</p> <p>_____ 25. M - 7¾" Horse Medallion Plate - Radium - Different Look</p> <p>_____ 26. B - 7½" Leaf Chain Plate - Silver w/Pink Highlights</p> <p>_____ 27. G - Mlbg. 3 in 1 Edge Super Radium Mystery Peacock Bowl - A Keeper</p> <p>_____ 28. A - Mlbg. 8½" Holly Whirl VT. 8 pt. Star Bowl - A Beauty - Radium</p> |
|-------------------------------------------------------------------------------------------------------------------------------------------------------------------------------------------------------------------------------------------------------------------------------------------------------------------------------------------------------------------------------------------------------------------------------------------------------------------------------------------------------------------------------------------------------------------------------------------------------------------------------------------------------------------------------------------------------------------------------------------------------------------------------------------------------------------------------------------------------------------------------------------------------|-------------------------------------------------------------------------------------------------------------------------------------------------------------------------------------------------------------------------------------------------------------------------------------------------------------------------------------------------------------------------------------------------------------------------------------------------------------------------------------------------------------------------------------------------------------------------------------------------------------------------------------------------------------------------------------------------------------------------------------------------------------------------------------------------------------------------------------------------------------------------------------------------------------------------------------------------------------------------------------------------------------------------------------------------|

- _____ 29. A - 6³/₄" Mlbg. Ruffled Holly Bowl - Beautiful
- _____ 30. **RARE - P - Mlbg. Ohio Star Vase - Special Find**
- _____ 31. M - Candy Dish w/lid - Black Base
- _____ 32. M - 5¹/₄" Deep Rd. Peacock Tail Bowl
- _____ 33. G - 5³/₄" Ruffled Imp. 3 in 1 Bowl
- _____ 34. Smoke - 6" Mini Morning Glory Vase - Int. Bruise - Still Very Nice
- _____ 35. **A.O. - Spat. Ftd. Stippled 3 Fruits Medallion Bowl - Super Multi Iridized**
- _____ 36. A - Spat. Ftd. 3 Fruits Medallion Bowl - A Real Beauty - Great Pattern
- _____ 37. **P - Multi Electric Spat Ftd. 3 Fruits Medallion Bowl - Super**
- _____ 38. P - 10" P.C.E. Wishbone Bowl - Super Elec. w/1/2" Chip on Edge - Still a Dandy
- _____ 39. M - 9" Captive Rose Plate - Scarce - Above Average
- _____ 40. **B - Great 9" Captive Rose Plate - Multi Irid. - Way Above Average**
- _____ 41. **Super Teal Flashed - Jeanette Glass Stippled Acorns Covered Candy Dish**
- _____ 42. P - Elec. Imp. Grape Decanter w/Stopper - Super Item
- _____ 43. A - Imp. Grape Wines - 2 x \$
- _____ 44. **P - Imp Grape Super Elec. Carafe**
- _____ 45. P - Imp. Grape Super Decanter Bases - A or B - Great Decorator Items
- _____ 46. **P - 8" 8-Ruffle Imp. Super Elec. Windmill Bowl**
- _____ 47. Yellowish G - Imp. Deep 7" Round Windmill Bowl - Glows - Neat
- _____ 48. **Smoke - 8" Deep Round Super Imp. Windmill Bowl**
- _____ 49. **P - Super Elec. 5" 6-Ruffle Zippered Heart Berry Bowl**
- _____ 50. **P - Ultra Rare, Super Elec., Imp. 10¹/₄" Rd. Ftd. Lustre Rose Centerpiece Bowl - Rare, Rare Shape - Not Listed**
- _____ 51. M - Butterfly & Berry Spooner - Dark One
- _____ 52. Smoke - Scarce 5¹/₄", 6-Ruffle Tulip & Cane Bowl
- _____ 53. Teal - Small Westmoreland Shell Dish
- _____ 54. Flashed - M - 6 Panel Flute Tumblers - 8 x \$ - Not Listed or Shown
- _____ 55. **M - Flashed - Washboard Cream/Sugar - Rare**
- _____ 56. **M - Flashed - Butter Dish w/lid - Washboard Pattern**
- _____ 57. M - Flashed - Washboard Cream Pitcher
- _____ 58. M - Flashed - 6 Panels, Flute, ?, Salt Dip
- _____ 59. M - Flashed - Diamond Salt/Pepper Shakers - 4" Tall
- _____ 60. **M - Flashed - Mini 2¹/₂" Rare Diamond & Prism Salt/Pepper Set**
- _____ 61. M - Flashed - 4¹/₄" Diamond Salt/Pepper Set
- _____ 62. M - Flashed - Colonial Twin, ?, Toothpick Holder
- _____ 63. M - Flashed - 3" Washboard Salt/Pepper - No Lids
- _____ 64. M - Flashed - 6 Panels, ?, Handled Salt Dip
- _____ 65. **P - 4" Mini Tri-Corner, Twigs, Rare, Dugan Vase**
- _____ 66. **M - Flashed - Mini 4" Fostoria Beaded Tear Drop, Ultra Rare, Vase**
- _____ 67. **P - 4" Tri-Corner, Twigs, Rare Dugan Vase - Great Miniature**
- _____ 68. **M - Flashed - 11¹/₂" Vase, Unknown Pattern, 5¹/₂" Top, 4" Hex Base - Wow**
- _____ 69. **M - Flashed - Rare, 9¹/₄" Wide, 8" Tall, Diamond Prisms Basket**
- _____ 70. **M - Pair, 8¹/₂", 1st Time Offered, Moonprint Radium Candle Sticks - Rare**
- _____ 71. B - Gorgeous, 7¹/₂" Fenton, 8-Ruffle Grape & Cable Bowl - Very Nice
- _____ 72. Dark P - 10" Lined Lattice, Multi Electric Vase
- _____ 73. P - N Ruffled Strawberry Bowl - Smooth Back - Super Pretty
- _____ 74. A - N Ruffled Strawberry Bowl - Basketweave Exterior - Blues, Purple, Golds
- _____ 75. **Fabulous P - Multi Electric, Loganberry Vase - ONE TO CHERISH - WOW!**
- _____ 76. G - Ruffled Heart & Vine Bowl - Beautiful G Irid.
- _____ 77. **G - Ruffled N Nippon Bowl - B.W. Exterior - Great One - Very Scarce**
- _____ 78. **Red A - 10-Ruffle Windflower Bowl - A Beauty - Appreciating Pattern**
- _____ 79. **P - 9¹/₄" Low Ruffle Fabulous Electric Fanciful Plate - A Show Stopper**
- _____ 80. **P.O. - 9¹/₂" Low Ruffle Fanciful Plate - Loaded with Color**
- _____ 81. M - Deep 8", Rd., Hattie Bowl
- _____ 82. M - Wreath Rose, Rose Bowl (Base - Minor Heat Check)
- _____ 83. M - Long Thumbprint Creamer - Scarce
- _____ 84. M - Ruffle Panthers 5¹/₂" Bowl - Blues & Pinks
- _____ 85. M - 5³/₄" Ftd. Little Fishes Ruffled Bowl - Scarce Size
- _____ 86. P - 8¹/₂" V.I.P. Corinth Vase - Scarce Color
- _____ 87. M - Persian Medallion Hair Receiver - Neat Item - Square Opening
- _____ 88. B - Heart & Vine Bowl - Scarce in Blue
- _____ 89. B - 8³/₄" 6-Ruffle Windflower Bowl - Beautiful Bowl - Scarce Base Color

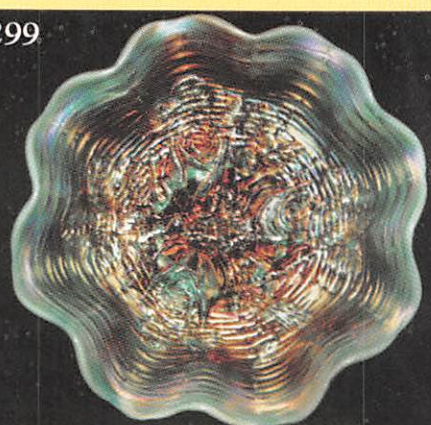
298



155



299



223



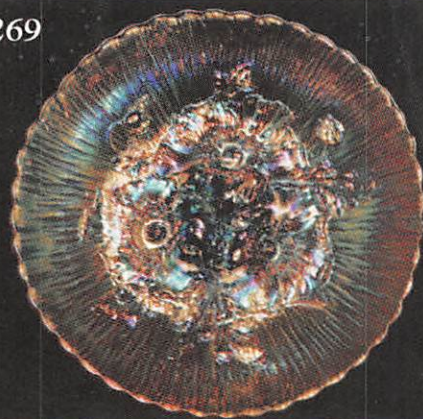
279



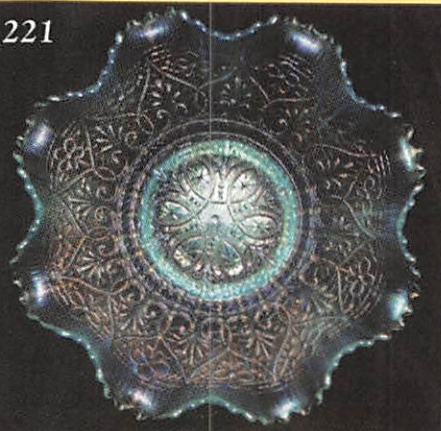
280



269



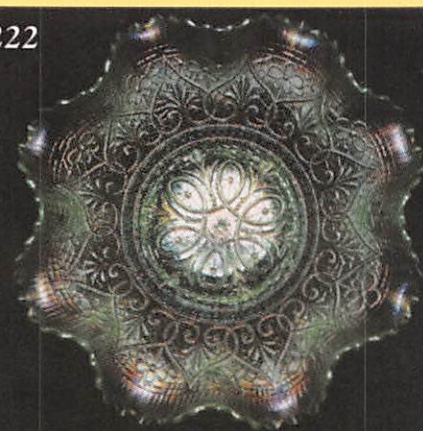
221



35



222



247



249



300



- _____ 90. **M - 8" Imp. Octagon Vase - Scarce**
- _____ 91. Clam - 10" Collar Base Imp. Round Lustre Rose Bowl - Outstanding - Great Bowl
- _____ 92. Clam - 10" Collar Base Imp. Grape Round Bowl - Scarce - Also Great Size
- _____ 93. P - 8" Imperial, Multi Elec. Heavy Grape Plate - Choice Item
- _____ 94. P.M. - 8" Imperial Radium, Multi Elec. Heavy Grape Plate - Super Irid.
- _____ 95. M - 8" Imperial Dark Radium, Multi Elec. Heavy Grape Plate
- _____ 96. Clam - 9" Imperial Grape, Low Ruffle Bowl or Plate, ?
- _____ 97. Pretty Amber - 9" Imp. Ruffle Pansy Bowl
- _____ 98. B - 8½" 6-Ruffle Persian Medallion Bowl
- _____ 99. **Elec. B - Stippled Rib Back 3 Fruits Plate - Minor Fruit Scratching - Super**
- _____ 100. **Ultra Rare Smoke Lav. - 9½" P.C.E. Wishbone Collar Base Bowl - Not Listed**
- _____ 101. A - N 10" Collar Base Ruffled Wishbone Bowl - Scarce
- _____ 102. P - Ftd. Ruffled N Wishbone Ruffled Bowl - Multi Elec.
- _____ 103. P - Imp. 7-Piece Diamond Lace Water Set - Always a Favorite - 1 Lite Tumbler - So?
- _____ 104. **P - Stretch 7-Piece Bulbous Water Set - Real Rare Beauty - Not Listed**
- _____ 105. P - Imp. Grape Decanter - Elec. - No Stopper - Still a Beauty
- _____ 106. Super Multi Elec. P - 8" Imp. Ruffled Open Rose Bowl
- _____ 107. Super Multi Elec. P - 7½" Imp. Ruffled Scroll Embossed Bowl - File Exterior
- _____ 108. Super Multi Elec. P - 5½" Imp. Ruffled Scroll Embossed Bowl - File Exterior
- _____ 109. **Super Multi Elec. P - 11" Imp. Grape 8-Ruffle Master Bowl - Rare Size**
- _____ 110. **Super Multi Elec. P - 8½" Imp. Grape 8-Ruffle Bowl**
- _____ 111. **Super Multi Elec. P - Imp. Grape, Deep 7" Round, Bowl**
- _____ 112. Super Multi Elec. P - Imp. Oval Pansy Relish Dish
- _____ 113. Super Multi Elec. P - 9" Imp. Pansy Ruffled Stippled Pansy Bowl
- _____ 114. **Super Elec. B - 6-Ruffle Orange Tree Trunk Bowl - Show Stopper**
- _____ 115. P - Imp. 9¼" Scroll Embossed Multi Satin Plate - Dandy - Very Desirable
- _____ 116. Great M - 11" Ball Ftd. Ruffled Two Flowers Bowl - Real Beauty
- _____ 117. M - Sailboats Ruffled Compote - Very Scarce Shape
- _____ 118. M - Sailboats Wines - A or B
- _____ 119. **Super - Multi Elec M - 10½" I.C.S. Ball Ftd. Chrysanthemum Bowl**
- _____ 120. **G - 9" C.R.E. Feathered Serpent Bowl - Rare Shape and Very Nice**
- _____ 121. P.O. - Collar Base Ruffled Dragon/Lotus Bowl - Chip on Edge - Still Rare
- _____ 122. Great M - Collar Base Ruffled Dragon & Lotus Bowl
- _____ 123. Great A - Collar Base Ruffled Dragon & Lotus Bowl - Minor Flawed Point
- _____ 124. **Ultra Rare RED Slag - Collar Base Peacock & Grape Bowl - Rich & Dark**
- _____ 125. RED AMBERINA - 6" I.C.S. Stippled Rays Bowl
- _____ 126. B - Mini Blackberry Compote - Scarce
- _____ 127. M - Star Medallion Flared Top Tumbler - Radium
- _____ 128. M - Flashed - Miniature Spring Basket Pattern with Handle
- _____ 129. P.M. - Big Basket Weave Handled Basket
- _____ 130. **Rare Moonstone - Westmoreland 8½" Scales Plate - Beautiful**
- _____ 131. **W - 8½" Super Multi Irid Fanciful Plate - Scarce Quality Item**
- _____ 132. Cobalt B - 7½" 8-Ruffled Fenton Acorn Bowl - Outstanding Example
- _____ 133. Scarce A - Louisa Rose Bowl
- _____ 134. Great Dark M - Fenton 2-Fruits Divided Bon Bon - Don't See Many of These
- _____ 135. **M - Mayflower Gas Lamp Shade**
- _____ 136. M - Lattice Band, Stork & Rushes Mug
- _____ 137. **Rare M - Wine & Roses 7-Piece Cider Set - Complete - Very Under Rated**
- _____ 138. Cobalt B - Orange Tree Wines - Choice A or B - Rarity
- _____ 139. Shriners Champagne, 1909, Tobacco Leaf
- _____ 140. **Amberina - Persian Medallion Bon Bon - Great Rarity**
- _____ 141. M - Illusion Bon Bon
- _____ 142. B - Fenton Strawberry Bon Bon
- _____ 143. **Amber - Fenton Strawberry Bon Bon**
- _____ 144. P.O. - Coin Dot Compote
- _____ 145. **W - Puzzle Banana Shape Bon Bon - Floral & Wheat Exterior - Pretty**
- _____ 146. A - Dugan Star Fish Bon Bon - Very Scarce
- _____ 147. P.O. - 8-Ruffle Dugan Star Fish Compote
- _____ 148. **M - 6½" Round Chariot Compote - Clear Base**
- _____ 149. M - 7" 6-Ruffle Fenton Peacock and Urn Compote - Low, Low Ruffled - Neat
- _____ 150. **Great B - 10½" 6-Ruffle, Beautiful, TEN Mums Bowl**
- _____ 151. P - 9" N Rosette Ftd. Bowl - Great Example - Seldom Offered

- _____ 152. Super Radium G - 8³/₄" Rd. Persian Medallion Bowl - Unusual Shape
- _____ 153. **B - Outstanding Multi Elec. Fenton Holly Plate**
- _____ 154. **M - Pumpkin Multi Irid. Fenton Holly Plate**
- _____ 155. **Gorgeous P.M. - Fenton Holly Plate - The Best**
- _____ 156. Scarce A - Fenton Holly Plate - Silver & Gold Irid. - Very Scarce Color
- _____ 157. Clam - C.R.E. Ruffled Persian Medallion Compote
- _____ 158. **P.O. - C.R.E. Ruffled Folding Fan Compote - Banana Shaped**
- _____ 159. P.O. - Ruffled Folding Fan Compote
- _____ 160. P - N Strawberry 9" Plate - B.W. Exterior - Purples & Golds
- _____ 161. M - Birds & Cherries Wall Pocket Vase
- _____ 162. **M - Daisy Block, 12" Long Boat**
- _____ 163. **Aqua - Base, 4 Sides Up, Open Edge Basket**
- _____ 164. P.O. - 7¹/₂" 6-Ruffle Dugan Holly Bowl
- _____ 165. W - Big Basket Weave 4¹/₂" Squatty Vase - A Beauty
- _____ 166. A - Stretch #70 Rose Bowl - Iron Crossmark - Base Heat Crack
- _____ 167. **P.M. - Radium, Scarce, Beaded Stars Rose Bowl**
- _____ 168. M - English Apple Panels Open Sugar Bowl
- _____ 169. G - 9" Imp. Ruffled Pansy Bowl - Radium Silver/Gold
- _____ 170. **Amber - Imp. Pansy Flat Oval Pansy Dresser Tray - Gold/Purple Highlights**
- _____ 171. **G - Imp. Windmill Relish Bowl - Scarce Beauty - Seldom Offered**
- _____ 172. P - 10" Tree Trunk Vase
- _____ 173. G - 11¹/₂" 6-Paneled Vase
- _____ 174. **M - 13¹/₂" Hobnail Variant Mid Size Vase - 4" Base - Very Scarce**
- _____ 175. Teal G - 10³/₄" April Showers Vase
- _____ 176. B - 8" Diamond & Bows Vase - Very Pretty - Scarce
- _____ 177. **M - 12¹/₂" Rare Fenton #888 Pattern Vase**
- _____ 178. **B - 6³/₄" Butterfly & Berry Vase - Scarce 4³/₄" C.R.E. Top - Scarce Shape**
- _____ 179. **Light M - Jenkins 7³/₄" Golden Flowers Vase**
- _____ 180. Russet - 11" Thin Rib Vase
- _____ 181. M - Ftd. Prism Panels Vase - Base Chips - Beauty
- _____ 182. B - Wreath Rose Compote - Scarce
- _____ 183. G - N Plain Interior Greek Key Reverse Bowl
- _____ 184. Yellow Amber - Leaf Swirl Compote
- _____ 185. **Scarce A - 6-Ruffle Pony Bowl**
- _____ 186. **Vas. I.G. - Mini Laurel Leaves Compote - Rare**
- _____ 187. **M - Miniature - Tiny Hobnail Lamp - Clear Globe**
- _____ 188. P.M. - Flashed - Checkerboard Cruet - Extremely Rare
- _____ 189. M - Flashed - Paneled Cruets - A or B
- _____ 190. **Deep Olive - 9" Ftd. Ruffled Panthers Bowl - Very Scarce**
- _____ 191. Amberina - Imp. Jewels Open Sugar Bowl
- _____ 192. **M - Flashed - Gaelic Open Pattern Glass Sugar Bowl**
- _____ 193. M - Flashed - Czarina or Pineapple & Fan Cup
- _____ 194. **M - Flashed - Rare Chain & Star Toothpick Holder - Miniature**
- _____ 195. M - Flashed - Rare Banded Barrel Toothpick Holder - Miniature
- _____ 196. **M - Flashed - Rare Portland Wine Glass**
- _____ 197. M - Flashed - Fostoria Prism Band Individual Salt
- _____ 198. M - Flashed - Pair Fostoria Swirl Pattern Salt & Pepper
- _____ 199. M - Flashed - 2¹/₂" Miniature Daisy & Button Pitcher
- _____ 200. **Ultra Rare MLBG Vaseline - Stippled Diamonds, 1 of a Kind, Nappy**
- _____ 201. A - 10" 3 in 1 Edge Mlbg. Peacock & Urn Bowl - Gorgeous Satin Irid.
- _____ 202. **G - 8" I.C.S. Concord Bowl - Rare Shape**
- _____ 203. **Super Multi Elec. P - Dugan 10-Ruffle Dogwood Bowl**
- _____ 204. P.O. - 9¹/₂" 6-Ruffle Dugan Cherry Collar Base Bowl - Jewel Heart Exterior
- _____ 205. **W - 9" 3 in 1 Edge, Super, Round-Up Bowl - Scarce Beauty**
- _____ 206. P.O. - 9" Great Low Ruffle Round-Up Plate or Bowl - Super Example
- _____ 207. **M - 8-Piece Studs Flashed Juice Set with Tray - Rare Complete**
- _____ 208. M - Flashed - Pleated Pattern Cigarette Holder
- _____ 209. **Aqua O - Rare Estate Sugar Bowl**
- _____ 210. Pastel O - Rare Estate Sugar Bowl
- _____ 211. Radium Elec. A - Fisherman's Mug - A Beauty
- _____ 212. Vas. - Orange Tree Mug - Marigold Overlay
- _____ 213. M - Banded Grapes Mugs - Choice A, B or C
- _____ 214. M - Fenton Holly Bell Shaped Compotes - A, B or C
- _____ 215. **Amber - 4¹/₂" Imp. Heavy grape Berry Bowl - 4 x \$ - Extremely Scarce**

203



225



296



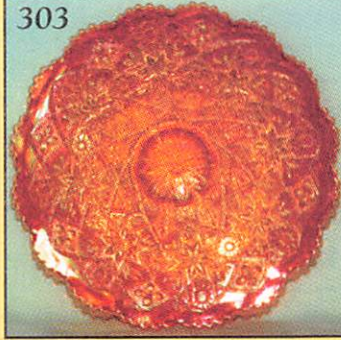
150



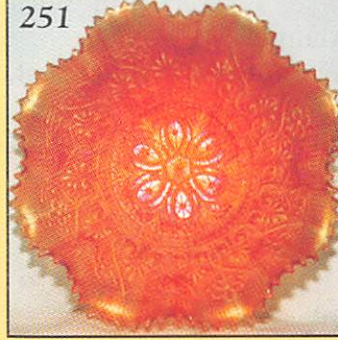
268



303



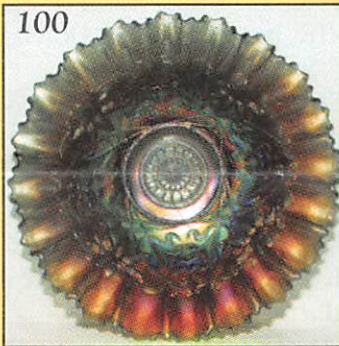
251



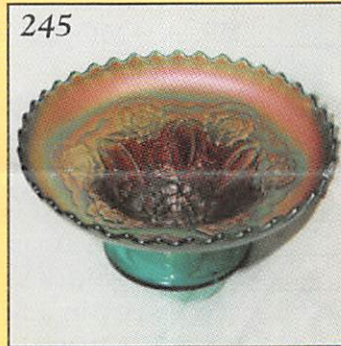
248



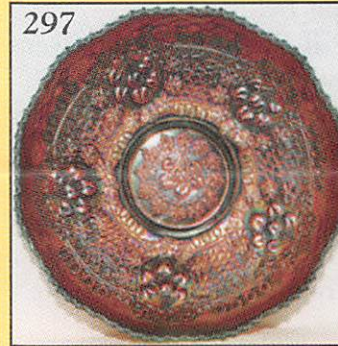
100



245



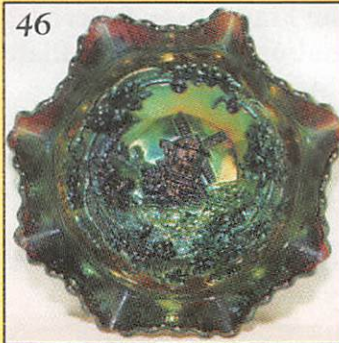
297



153



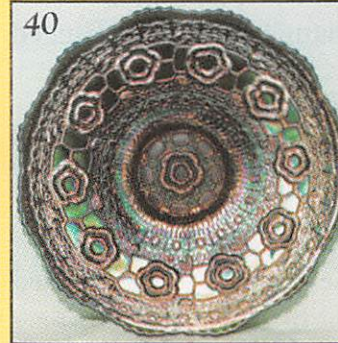
46



201



40



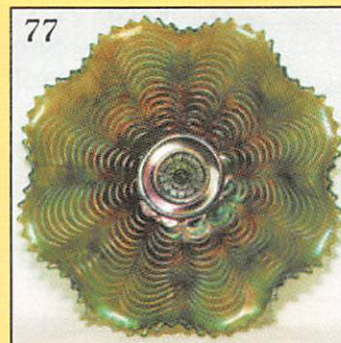
110



202



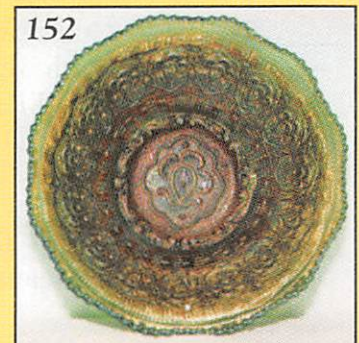
77



27



152



- _____ 216. G - Cambridge Cologne Bottle with Clear Cut Glass Stopper - Beautiful & Rare
- _____ 217. A - Mlbg. Peacock Tail Variant Ruffled Compote - Multi Satin
- _____ 218. A - N Ftd 8-Ruffle Wishbone Bowl - Multi Satin
- _____ 219. Teal - Flashed - Honey Bee Pot - Complete
- _____ 220. Aqua - Flashed - Rolls Variant Tankard 7-Piece Lemonade Set - Great Set
- _____ 221. Super I.B. - Hearts & Flowers Rib Back Bowl - Outstanding Example
- _____ 222. I.G. - N Hearts & Flowers Rib Back Bowl - Super Example
- _____ 223. W - N Hearts & Flowers Ruffled R.B. Bowl - Great Pinks/Blues
- _____ 224. Elec. B - N Hearts & Flowers Ruffled R.B. Bowl - Gorgeous
- _____ 225. P - Multi Elec., N Hearts & Flowers R.B. Bowl - Ruffled - Wow
- _____ 226. M - N Ruffled Hearts & Flowers R.B. Bowl - Super Pinks & Golds
- _____ 227. Aqua O - R.B. Hearts & Flowers Compote - A Real Beauty
- _____ 228. Pastel Aqua O - R.B. Hearts & Flowers Compote - A Real Beauty
- _____ 229. W - Smooth Back Hearts & Flowers Compote - Pinks, Blues, Golds
- _____ 230. Rare A - English Pineapple Cream Pitcher
- _____ 231. Rare A - English Pineapple 6" Open Compote
- _____ 232. M - Pineapple Crown 8" Oblong Bowls - Choice A or B
- _____ 233. Super Red Stretch - 8¼" Colonial Panel Plates - Choice A, B, C, D, E or F
- _____ 234. M - Flashed - Enamel Decorated Hinged 4¼" Powder Box - Round
- _____ 235. M - 7½" Stork ABC Plate
- _____ 236. W - 6" I.C.S. Scarce Persian Garden Bowl - Beauty
- _____ 237. M - 8-Ruffle Square Shape Plaid Bowl
- _____ 238. P - Spat. Ftd. 3-Fruits Medallion Bowl
- _____ 239. Scarce Deep Blue - Spat. Ftd. 8" Ruffled Stag Holly Bowl - Scarce
- _____ 240. Super Red - Spat. Ftd. Ruffled Peacock & Grape Bowl
- _____ 241. M - Grape & Gothic Arches Covered Butter Dish - Extra Nice
- _____ 242. Dark M - J.I.P. Ftd. Horse Medallion Bowl
- _____ 243. A - N 11" Grape & Cable Ftd. Orange Bowl - Favorite
- _____ 244. M - Leaf Tiers Cream Pitcher
- _____ 245. Rare Saph. - Dugan Dome Base 8¼" Rd. Double Steam Roses Bowl - One of a Kind?
- _____ 246. Super P - N P.C.E. Rib Back Peacocks Bowl - Multi Elec.
- _____ 247. Gorgeous Pastel M - N R.B. Peacocks Plate - Super, Super
- _____ 248. B - N Ruffled R.B. Peacocks Bowl - Great Greens, Purples & Golds
- _____ 249. Outstanding Pastel M - N R.B. Ruffled Peacock Bowl - Super Irid.
- _____ 250. Elec. B - Ruffled Embroidered Mums R.B. Bowl - Outstanding Example
- _____ 251. M - Ruffled Embroidered Mums R.B. Bowl - Pinks, Blues, Golds
- _____ 252. P - Leaf & Beads N Rose Bowl
- _____ 253. P - N Butterfly Bon Bon - Multi Elec.
- _____ 254. M - Fenton Holly Berry, Bell Shaped, Compotes - Choice A, B or C
- _____ 255. B - Fenton Holly Berry Ruffled Compote
- _____ 256. Lime Vaseline - Fenton Holly Berry, Rd., Compote
- _____ 257. G - 9½" Mlbg. Ruffled Whirling Leaves Bowl - Radium
- _____ 258. G - 10¼" Mlbg. Collar Base Ruffled Fleur-de-Lis Bowl - Radium - Scarce
- _____ 259. A - Mlbg. 6-Ruffle Nesting Swan Bowl - Satin
- _____ 260. Lav. P - Imp. Flute #3 Pattern Nappy - Very Scarce - A Beauty
- _____ 261. G - 5½" Coin Dot Rose Bowl
- _____ 262. M - Banded Grape Mugs - Choice A or B
- _____ 263. P - Fishermans Mug - Old Favorite
- _____ 264. B - 2-Sides Up Kittens Card Tray Plate - Rarity in a Miniature
- _____ 265. M - Kittens Bowl - 2-Sides Up
- _____ 266. Rare P - Super Multi Elec. Poppy Show Plate - One of the Finest Ever Offered
- _____ 267. Elec. B - Outstanding Poppy Show Plate - Super - Show Stopper
- _____ 268. Pumpkin M - Outstanding Poppy Show Plate - Again the Best
- _____ 269. Luscious Pastel M - Poppy Show Plate - Super Irid.
- _____ 270. A - 10" N P.C.E. Smooth Back Stippled Rays Bowl - Very Scarce
- _____ 271. Smoke - Poinsettia Milk Pitcher - Scarce & Nice
- _____ 272. Scarce A - Windflower Tri-Cornered Handled Sauce Bowl - Scarce Color
- _____ 273. P - N Butterfly Bon Bon
- _____ 274. Dark Ice B - Grape & Cable Banana Boat - A Great Example
- _____ 275. M - Ruffled Mikado Compote - Popular Item
- _____ 276. W - Criss Cross & Bands Lamp Shade
- _____ 277. Undervalued M - 6¼" Extra Nice Rd. Lions Bowl

- _____ 278. Super Radium P.M. - 8" Imp. Heavy Grape Plate
- _____ 279. White Opalescent Hobnail - M - Flashed - 4½" Covered Powder Dish - 1st Known
- _____ 280. White Opalescent Hobnail - M - Flashed - 5½" Pitcher - 1st Known Not Crider
- _____ 281. White - 7" Dugan Question Mark Pedestal Plate - Super Pinks & Blues
- _____ 282. M - 7" Dugan Question Mark Pedestal Plate - Super Pinks & Blues
- _____ 283. Rare P - Dugan 5½" Rd. Multi Elec. Question Mark Compote - Geo. Peach Exterior
- _____ 284. Clam - 9" Imp. Grape Ruffled Plate
- _____ 285. Lav. A - Imp. Heavy Grape Carafe - Super Electric
- _____ 286. M - N Peacock at the Fountain Cream Pitcher - Lots of Pinks
- _____ 287. M - N Peacock at the Fountain Sugar Bowl w/lid
- _____ 288. M - N Peacock at the Fountain Super Spooner - Minor Nick on Base
- _____ 289. P - N Peacock at the Fountain Pitcher & 4 Tumblers
- _____ 290. M - Goofus Glass 5¾" Palm Beach 4-Pinched Corner Bowl - Rare
- _____ 291. Scarce P - 6" 6-Ruffled Ski Star & Compass Berry Bowl
- _____ 292. Scarce P - 5¾" 6-Ruffled Petal & Fan Jeweled Heart Berry Bowl
- _____ 293. M - Imp. Star Medallion Milk Pitcher
- _____ 294. M - Radium 7½" 12-Corner Pine Cone Plate
- _____ 295. Near Em. G - Spat. Ftd. Ruffled Sunflower Bowl
- _____ 296. B - Multi Elec. Orange Tree w/Trunk Plate - Beautiful Example
- _____ 297. Rare A - 9½" I.C.S. Cherry Chain Bowl - Orange Tree Exterior
- _____ 298. Outstanding Pastel M - Rose Show Bowl - Super Pinks & Blues - It Talks Color
- _____ 299. Great Aqua O - Rose Show Bowl - Lots of Blues, Pinks Irid.
- _____ 300. Outstanding Ice B - Ftd. Ruffled N Poinsettia Bowl - Super Example
- _____ 301. M - Imp. 6-Sided Candle Stick - Dark, Rare Item
- _____ 302. I.B. - Fine Cut & Roses Rose Bowl - Chipped Foot - Dark Beauty
- _____ 303. Outstanding M - 10½" Imp. Hattie Chop Plate - Radium, Multi Elec. Pinks & Golds
- _____ 304. M - Ruffled Iris Compote
- _____ 305. M - Polo Ash Trays - Choice A or B
- _____ 306. G - Peacock Tail Bon Bon - 2 Sides Up - Beauty
- _____ 307. M - J.I.P. Dark Open-Edge Basket
- _____ 308. Multi Elec. P - Grape & Cable Dresser Tray - Great Example
- _____ 309. G - N B.W. Ruffled Good Luck Bowl - Scarce Color
- _____ 310. Very Pretty Aqua O - N Beaded Cable Rose Bowl
- _____ 311. G - Rib Back N Peacocks Plate - Very Scarce - A Beauty
- _____ 312. Pale Radium M - Holly Whirl Mlbg. Bon Bon
- _____ 313. A - Fenton Butterfly Bon Bon
- _____ 314. Red - Sailboats Bowl - Scarce
- _____ 315. B - Sailboats Bowl - Very Scarce
- _____ 316. M - Sailboats Bowl - Dark
- _____ 317. M - 4-Sides Up Blackberry Spray Hat - Super Pretty
- _____ 318. L.G. O - Ruffled Blackberry Spray Hat - Rare
- _____ 319. M - 9½" Louisa Ftd. Plate - Very Scarce
- _____ 320. Smoke - Imp. 7½" Swirl Vase
- _____ 321. M - Imp. 7½" Swirl Vase
- _____ 322. M - C.R.E. Ruffled Persian Medallion Small Compote
- _____ 323. M - Enameled 7" Plume & Leaves Pitcher w/3 Tumblers - One Price - Late Carnival
- _____ 324. M - Covered Duck Dish
- _____ 325. Teal - Flashed Jeanette Glass Large Butterfly Dish

**50 Plus Pieces, Not Listed,
Sold at End of Catalog**

**CARNIVAL GLASS AUCTIONS
1999 CALENDAR OF EVENTS**

April 3, 1999 - John Muehlbauer Etal

May 15, 1999 - Alton & Gladys Skouby Collection

June 19, 1999 - Eastern Collection

CALL NOW TO SCHEDULE YOURS - 1 P.C. OR 1,000

For Free Color Catalogs & Information Write: Mickey Reichel
516 Third Street, Boonville, MO 65233-1536 or Call

If you haven't been to Boonville, Missouri and attended a Mickey Reichel Auction, I'm extending a special invitation to one of our very best yet.

Thank You, Mickey

220



58 - 59 - 60 - 61 - 62 - 63 - 64



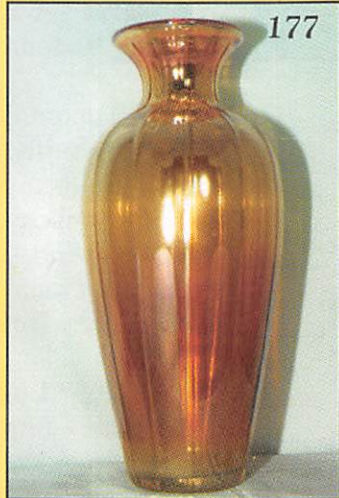
104



75



177



68



30

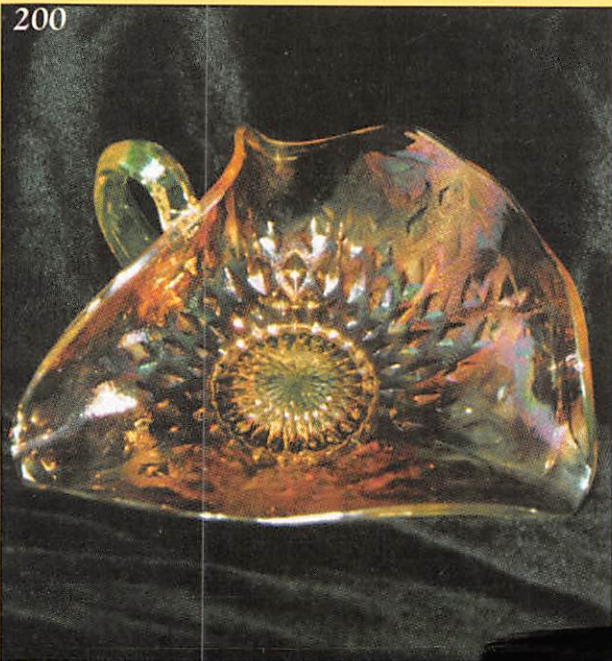


MICKEY REICHEL
ANTIQUE & AUCTION, L.C.
516 THIRD STREET
BOONVILLE, MO 65233-1536



FIRST CLASS MAIL

200



SPECIAL INVITATION TO:

