

CARNIVAL GLASS AUCTION

Saturday, April 3, 1999  9:00 a.m.

Held Inside the Mickey Reichel Auction Center

Office: 660-882-5292 • Boonville, Missouri • Home: 660-882-5283



Direct e-mail: mreichel@undata.com



NEW WEB SITE ON: <http://www.woodsland.com/carnivalglass> • <http://www.woodsland.com/mickey>

105



170



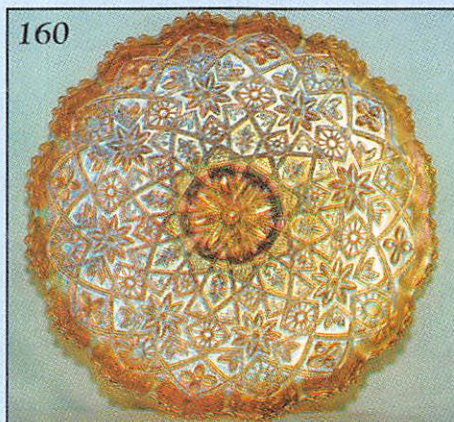
199



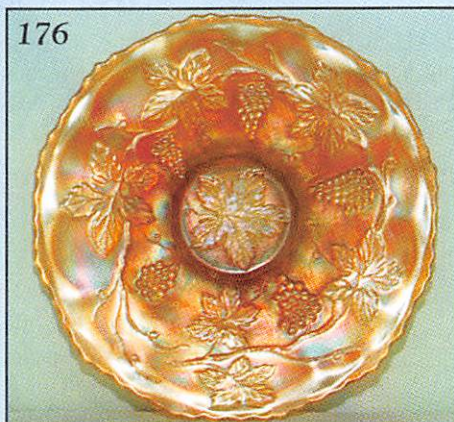
250



160



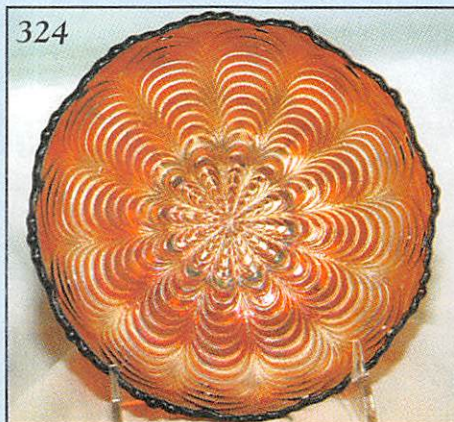
176



288



324



200



NO BUYERS PREMIUM

Held Inside the Mickey Reichel Auction Center

1 Mile North of I-70 on Hwy. 5, Exit 101, Boonville, Missouri • 20 Miles West of Columbia, MO on I-70
Preview Friday 12 p.m. - 6 p.m. and 7:30 a.m. - 9:00 a.m. Day of Auction

Make Reservations **EARLY** at one of these local motels:

Days Inn: 660-882-8624 • Comfort Inn: 660-882-5317 • Super 8: 660-882-2900


CALIFORNIA COLLECTION: John Muehlbauer, ETAL

Auction Consists of Rarity, Great Irid. and Variety

WRITE IN BIDS: If you are unable to attend the auction, we will be happy to accept absentee bids which must be received by THURSDAY, APRIL 1, 1999. Don't Delay.

FOR AUCTION PRICE RESULTS: Send \$3.00 and Large S.A.S.E. to 516 Third Street, Boonville, MO 65233-1536

PLEASE NOTE: There is a **\$5 handling charge for each successful bid which will be added to the selling price** for all write-in bids. This is in addition to the cost of postage, insurance and packing. Your write-in bid will be entered just as if you are present and bidding. **Successful bidders will be notified in 1 to 3 days by the auctioneer (so be sure to include your phone number).** Direct mail bids to Auctioneer Mickey Reichel, 516 Third Street, Boonville, MO 65233-1536. Terms: Cash or Check accepted with proper I.D. and Social Security Number and References. Announcements made day of the auction supercede all printed material. Not Responsible for Accidents or Sold Items. **No return on any items once they leave the Auction Center (No Exceptions).******

 Call for additional information: 660-882-5292 days or 660-882-5283 evenings.

FAX: 660-882-5292 (evening hours start FAX transmission after beep)

 **NOTE: Read each line, Bold and Plain print. Huge Quality Selection.**

MAIL BIDS: Items are bid on in perfect condition with average or above iridescence OR as listed in the brochures. Bids will not be carried out when damage on an item has been found during the auction.

PEOPLE PRESENT AT AUCTION ARE RESPONSIBLE FOR FINDING ANY PINHEADS, WEAR, SPOTTINESS, MANUFACTURER'S DEFECTS OR ANY OTHER MINOR FLAWS, ETC.

WELCOME TO THE AUCTION

- | | |
|--|--|
| _____ 1. P - Imp. Grape Wines - 2 X \$ | _____ 17. Scarce G - N 10" Dia. Point Vase |
| _____ 2. B - Orange Tree Mug - 3 1/2" Top x 3" Base | _____ 18. M - 7 1/4" Imp. Heavy Grape Plate - Dk. |
| _____ 3. M - 6 1/2" Ripple Vase - Little Beauty | _____ 19. IB - Singing Birds Mug - Very Rare w/light Gold Irid. - Few Offered |
| _____ 4. P - 12" Multi-Elec. Ripple Vase | _____ 20. Dark B - Singing Birds Mug - Scarce Color |
| _____ 5. M - 9" J.I.P. Morning Glory Radium Vase | _____ 21. Lav. - Singing Birds Mug - Radium Incredible Multi Elec. |
| _____ 6. M - 12" Free Fold Imp. Vase - Super Radium | _____ 22. G - Singing Birds Mug - Great Scarce Example |
| _____ 7. M - 7 1/2" Butterfly/Berry Vase - Very Detailed | _____ 23. M - Singing Birds Mug - Rare, Stippled, Pumpkin |
| _____ 8. G - Scarce 16" Milbg. Hobnail Variant Mid-Size Vase - Very Desirable | _____ 24. P.M. - Singing Birds Mug - Pink & Blue Highlights |
| _____ 9. G - Fine Cut & Roses Rose Bowl | _____ 25. P - Singing Birds Mug - Radium, Multi Elec. |
| _____ 10. Aqua O - Ruffled Collar Base Stippled 3-Fruits Bowl - Hot Item | _____ 26. Red - Rooster Hat Pin - Black Background |
| _____ 11. Great Dark M - 10 1/2" Ruffled Stag/Holly Bowl | _____ 27. Aq. Teal - Rooster Hat Pin - Rarity |
| _____ 12. Scarce Amber - Imp. Lustre Rose Fernery Bowl | _____ 28. Lav. - Rooster Hat Pin - Black Background |
| _____ 13. Near Elec. P - 8" Deep Round Acanthus Bowl | _____ 29. Black w/Gold - Rooster, Suns Up Hat Pin - No Irid - A Beauty |
| _____ 14. Super Lav. A - 6" N Grape/Cable Plate | _____ 30. Red - Contemporary H.O.A.C.G.A. Hat Pin |
| _____ 15. Great Lime Vas. - Ruffled Holly Fenton Compote - Dandy Find | _____ 31. Aqua - Small Elec. Cobblestones Hat Pin |
| _____ 16. Vas. - 2 Sides Up, O.E. Baskets - Choice A or B | _____ 32. B.A., Lav. Irid - Acorn or Pine cones Hat Pin |
| | _____ 33. B.A., Elec. Bluish Irid. ? - Double S Hat Pin |

- _____ 34. B.A., Multi Elec. Irid. - Tuffed Pillow VT. ? Hat Pin
- _____ 35. B.A., Multi Elec. Irid. - Spider Web & Beads ? Hat Pin
- _____ 36. P.M. - Ruffled Good Luck Bowl - Pinks, Blues & Yellows - A "10"
- _____ 37. Gorgeous B - Ruffled Stipple Good Luck Bowl - Tooth Missing - A "10" Plus Irid.
- _____ 38. A.O. - Ruffled Good Luck Bowl - Tip Surface Chip - Very Rare and Beautiful
- _____ 39. P.O. - 6" Four Flowers Plates - Sm. Bk. - A or B
- _____ 40. A - 10 Ruffle Pony Bowl - Elec. B, Center Panel on this Rarity
- _____ 41. Saph. - 9½" Fenton Fine Rib Vase - Rare Base Color
- _____ 42. M - Rare Imp. File Water Pitcher
- _____ 43. M - Rare Imp. File Tumbler
- _____ 44. B - Dugan Peacock at Fountain Tumbler
- _____ 45. B - Fenton Flowers Rose Bowl - Multi Elec.
- _____ 46. P - 8¾" Radium Elec. Lined Lattice Vase
- _____ 47. P - 9" Ruffled Imp. Multi Elec. Pansy Bowl
- _____ 48. Aq. O - N Drapery Rose Bowl
- _____ 49. M - Dark, Dugan Peach & Pear Banana Bowl
- _____ 50. P - 11" 8-Ruffle Sq. Shaped Victorian Bowl - Very Scarce
- _____ 51. Moonstone - 8½" JIP Corinth Vase
- _____ 52. B.O. - Westmoreland 9" Scales Ruffled Bowl - Under-Valued
- _____ 53. M - 8½" Rare Princeton Vase - Czech - (Sm. Base Chip) - Beautiful - Few Known
- _____ 54. M - 6" Dark Heavy Prism Panels Vase
- _____ 55. M - 9½" Beautiful Sunflower & Diamonds Vase - Scarce
- _____ 56. M - 6" Squatty Triands Vase - Beautiful Multi Radium
- _____ 57. M - 8" European Vase - Pattern (?)
- _____ 58. M - Stemmed Curved Star Celery Vase
- _____ 59. Light Amber - 3" English Towers Ruffled Vase - 5" Ruffled Top
- _____ 60. M - African Shield Vase w/Wire Insert (Rare)
- _____ 61. M - Thistle Vase - Scarce
- _____ 62. G - 9" Diamond Point Columns Vase
- _____ 63. M - 10¼" April Showers Vase
- _____ 64. A - 10¼" Diamond & Rib Vase
- _____ 65. Radium M - Rare Heavy Vine Tumbler - Minor Base Chips
- _____ 66. Dark M - Hen & Chicks Covered Dish
- _____ 67. M - English Diving Dolphins 8" Ruffled Bowl
- _____ 68. M - Mlbg. Mini Leaf & Little Beads Compote
- _____ 69. M.M.G. - 8" Westmoreland Carolina Dogwood Bowl - Super Example
- _____ 70. Celes. B - Rare Dugan Ruffle Vintage Bowl - Beautiful Find
- _____ 71. P - Imp. Grape Decanter - Stopper Damaged, but they are Super Elec. and Complete
- _____ 72. Rare G - Heavy Grape Punch Cup
- _____ 73. Pumpkin M - 3 in 1 Collar Base Dragon & Lotus Bowl - Super
- _____ 74. Rich M - Collar Base Dragon and Lotus Ruffle Bowl
- _____ 75. Vas. - 10" Fenton Vintage Ruffled Bowl - Very Rare - Large Size
- _____ 76. Vas. - 8½" 10-Ruffle Wind Flower Bowl - Super Rare
- _____ 77. P.O. - 10¾" 8-Ruffle Ski-Star Bowl - Farm Yard Shape - Great
- _____ 78. P.O. - 3 in 1 Double Stemmed Roses Bowl - Fabulous Example
- _____ 79. P.O. - 10-Ruffle Dome Ftd. Raindrops Bowl - Outstanding Piece of P.O.
- _____ 80. P.O. - 11¼" Imp. Poppy Show Vase - Loaded with Yellows, Blues & Pinks
- _____ 81. M - Vintage Fernery - Dark Brilliant Marigold
- _____ 82. Red - Amberina - Vintage Fernery
- _____ 83. EB - Vintage Fernery - The Best - Screamer
- _____ 84. G - Vintage Fernery - Tough Color - Rich Irid.
- _____ 85. P.O. - CRE - Beautiful Dome Base Petals Bowl - Dugan
- _____ 86. M - Fine Cut & Roses Rose Bowl - Pinks & Blues
- _____ 87. A - Fine Cut & Roses Rose Bowl - Chip on Ft.
- _____ 88. G - Very Scarce Fine Cut & Roses Rose Bowl
- _____ 89. IB - Fine Cut and Roses Rose Bowl - Fancy Int. - Frosty - Very Nice
- _____ 90. Acorn Burrs Punch Set - G. Base - P. Top (1 Flame Missing) - Elec. Irid. - Super Looker
- _____ 91. G - Acorn Burrs Punch Cups - 2 x \$ - Very Pretty
- _____ 92. B.O. - N Peacocks Bowl - Non Irid. - Very Desirable
- _____ 93. B.O. - N Bushel Basket - Non Irid. - Scarce
- _____ 94. B.O. - Rose Show Bowl - Outstanding - (Non Irid.)
- _____ 95. Lav. - A Ruffled Cobblestone Bowl - Super Multi Elec. - Hot Item!
- _____ 96. M - Hearts & Flowers Compote - Fabulous Irid.
- _____ 97. I.B. - N Butterfly Bon Bon - Threaded Back - Tooth Missing - Rare - Few Known
- _____ 98. Amber - C.R.E., J.I.P., Outstanding Blackberry Spray Hat
- _____ 99. Elec. B - N 5⅞" Peacock & Urn I.C.S. Sauce - Almost a Plate
- _____ 100. P - FARMYARD BOWL (1 of few) - True Square Examples - Gorgeous Item
- _____ 101. M - 5" Miniature Morning Glory Vases - Choice A or B
- _____ 102. Dk. B - 8" Diamond & Bows Vase - Scarce Color
- _____ 103. Scarce, Beautiful G - 11" N Dia. Pts. Vase
- _____ 104. Great Teal - 10" Concave Flute Vase
- _____ 105. Smokey - Signed Nu Art Homestead Chop Plate - Bluish Multi Stretch - Very Scarce
- _____ 106. Rare P.M. - 10" Cosmos Variant Chop Plate - Radium Gold/Silver - Few Known
- _____ 107. M - 10" Acanthus Multi Elec. Chop Plate
- _____ 108. Radium M - 9½" Deep Field Thistle Plate - Light
- _____ 109. P.M. - Rare 10½" Little Flowers Chop Plate - Gold, Silver, Pink

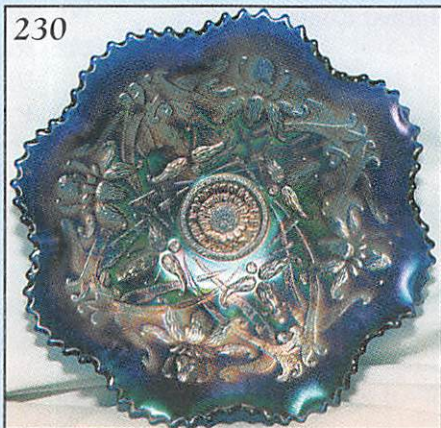
- _____ 110. **P - 11" Stippled Imp. Super Multi Elec. Heavy Grape Chop Plate**
- _____ 111. Clear - Proud Puss Decanter - Non Irid.
- _____ 112. Rich M - Grape Arbor Tumbler
- _____ 113. G ? Olive - #474 Pat. Punch Cup
- _____ 114. **G - N Great Stippled Grape & Cable Punch Cup**
- _____ 115. A - Beautiful Rare Stork & Rushes Punch Cup
- _____ 116. M - N Water Lily & Cattail Tumbler
- _____ 117. M - Fenton Water Lily & Cattail Tumbler
- _____ 118. B - 9 1/4" Fenton Holly Plate - Blues, Pinks & Golds
- _____ 119. Flashed M - Small Marathon Pig Bank
- _____ 120. P.O. - 10 1/2" 6-Ruffle Nice Petal & Fan Dugan Bowl
- _____ 121. **Helios G - 10 1/2" Hattie Chop Plate - Frosty Silver Irid.**
- _____ 122. A - N Strawberry Plate - B.W. Ext. - Pretty - Multi
- _____ 123. **W - Beautiful Frosty 10 3/4" Homestead Chop Plate - Great Example - Few Known**
- _____ 124. M - Fenton Holly Plate
- _____ 125. B - Fenton Bell Shaped Peacock at Urn Compote - Super Elec.
- _____ 126. **G - Fenton Strawberry Bon Bon - Rare - Special Item - Few Ever Sold**
- _____ 127. Nutmeg Custard - N Fine Cut & Roses Rose Bowl - Not Irid.
- _____ 128. Nutmeg Custard - N Bushel Basket - Not Irid.
- _____ 129. **Beautiful Imp. - 9" Open Rose Stippled Plate**
- _____ 130. Custard - 7 3/4" Lions Plats - Greenish Spray
- _____ 131. Custard - 7 3/4" Prayer Rug Plate - Gilded
- _____ 132. Beautiful M - 8" Heavy Grape Plate - Imperial
- _____ 133. Helios G - N Beaded Cable Rose Bowl - Rays Int.
- _____ 134. **Garnet Red - Collar Base, Peacock & Grape Bowl - Non Irid**
- _____ 135. P.O. - Dugan 6 1/2" Pinched Swirl Vase
- _____ 136. M - Enameled Pretty Panels Tumbler - N - Scarce Beauty
- _____ 137. P - Multi Elec. N Grape Arbor Tumbler
- _____ 138. **Vas. - Rare 9 1/4" 3 in 1 Edge Fenton Holly Bowl**
- _____ 139. P - Nippon Ruffled Bowl - B.W. Exterior
- _____ 140. Frosty W - Hearts & Flowers Compote
- _____ 141. Smoke Flashed - Ftd. Estate Salt (?)
- _____ 142. **Powder B - Imp. Lustre Rose Fernery Bowl - Scarce - Rare Imp. Color**
- _____ 143. G - 8 1/4" I.C.S. Fenton Holly Bowl
- _____ 144. W - Grape Delight Rose Bowl - Blues & Pinks
- _____ 145. Redish A. - Leaf & Beads Rose Bowl - Floral Interior
- _____ 146. **G - 2 Row O.E., J.I.P. Basket Weave Hat - Rare Color & Shape**
- _____ 147. **P.O. - 9 1/2" Low Ruffled Round-Up plate - Deep Opal**
- _____ 148. Scarce B - 5" Rd. Ftd. Panthers Berry Bowl
- _____ 149. M - 5" Mlbg. 3 in 1 Vintage Berry Bowl - Radium
- _____ 150. **Dark Rich Amber - 7 3/4" 8-Ruffle, Fenton Grape & Cable Bowl - Dandy**
- _____ 151. Scarce Amber - Ruffled Blackberry Spray Hat
- _____ 152. Yellow Amber - 10" J.I.P. Corinth Vase - Beauty
- _____ 153. Yellow Amber - 9 1/2" Fenton Fine Rib Vase
- _____ 154. **P - 10 3/4" Swung Super Elec. Ripple Vase**
- _____ 155. **Smoke - 5 3/4" Mini Morning Glory Vase - Cute Rarity**
- _____ 156. P - 6" Mini Morning Glory Vase - Multi Elec.
- _____ 157. Great G - 7" Mini Morning Glory Stick Vase
- _____ 158. Teal Flashed - Jeanette Glass Co. - 5-Piece Party Set - Butterfly Pat.
- _____ 159. Crystal - 9 3/4" Mlbg. Ohio Star Vase - Non Irid.
- _____ 160. **Amber - 10 1/2" Hattie Chop Plate - Gorgeous Blues Pinks & Gold Irid - RARE FIND**
- _____ 161. Pastel M - N Strawberry Bowl - Soft, Beautiful Yellow/Green Highlights
- _____ 162. **M - N Peacock at the Fountain 8-Piece Punch Set - A Real Beauty**
- _____ 163. **Satin Lime I.G. - Giant Peacock at the Fountain Rose Bowl - 1 of a Kind ?**
- _____ 164. Smk. Lav. - N Smooth Back 3-Fruits Bowl - Gorgeous Rarity
- _____ 165. **Saph. - Stippled Ruffled Collar Base 3-Fruits Bowl - Super Rarity**
- _____ 166. **Pumpkin -M - Ruffled Stippled 3-Fruits Bowl - Collar Base - Outstanding**
- _____ 167. **P.M. - N Stippled, Ruffled 3-Fruits Bowl - Super Yellows & Blues**
- _____ 168. **P - N Stippled 3-Fruits Plate - Elec. Blue Coloration**
- _____ 169. **E.G. - Heart & Vine 6-Ruffle Outstanding Bowl - Greens Hot**
- _____ 170. **B - Fenton Peacock & Urn 9" Plate - Ultra Gorgeous - Special - Super Item**
- _____ 171. **M - Fantail Chop Plate - 1 of 4 Super, Super, Rare - Foot Repaired**
- _____ 172. Great Radium M - 6-Ruffle Pony Bowl
- _____ 173. W - 6 1/4" Persian Garden Plate - Pool of Pearls Exterior
- _____ 174. Scarce I.G. - N Bushel Basket
- _____ 175. M - 8 3/4" Round, Deep Garden Path Variant - Rare Imperial Item
- _____ 176. **Ultra Rare M - 9" Fenton Vintage Plate - Need I Say More? - 2 or 3 Known**
- _____ 177. Great M - 9" 8-Ruffle Fenton Vintage Bowl
- _____ 178. G - 9" 8-Ruffle Fenton Vintage Bowl - Beauty
- _____ 179. Super A - 9" 8-Ruffle, Fenton Vintage Bowl
- _____ 180. **Super Rare, Persian B - 8-Ruffle Fenton Vintage Bowl - A Great Find**
- _____ 181. **Rare Amber - 9" 8-Ruffle Fenton Vintage Bowl**
- _____ 182. Scarce M - 8 1/2" 3 in 1 Edge, Fenton Vintage Bowl
- _____ 183. Great Radium A - 7 3/4" Fenton Vintage Plate
- _____ 184. G - N Ftd. Fine Cut & Roses Candy Dish - Beautiful Greens/Golds
- _____ 185. G - N 9 1/2" Tree Trunk Variant Vase - Starred Base

- _____ 186. **A - 10" I.C.S. Mlbg. Radium Peacock at Urn Bowl - 8 Tail Feathers, Not 7**
- _____ 187. Lime G - Honeycomb Bon Bon - M-Overlay - Base Glows
- _____ 188. A - 9" N Strawberry Plate - B.W. Exterior - Nice Example
- _____ 189. **B.A. - 2-Row O.E., B.W., Basket - Multi Irid. - Rarity - 5" Ruffle**
- _____ 190. **Saph. - 5½" J.I.P., O.E., B.W. Basket - Scarce Beauty**
- _____ 191. Vas. - 5" Ruffled 2-Row O.E. Basket
- _____ 192. Aqua - 5½" Ruffled 2-Row O.E. Basket
- _____ 193. **Deep Blue - 6" 2-Row O.E. Blackberry Int. Basket - Great Example**
- _____ 194. Great M - Lattice Banded Stork & Rushes Tumbler - Beauty
- _____ 195. M - 6-Ruffle Kittens Bowl
- _____ 196. **P - Elec. Super 8¼" Morning Glory Bud Vase**
- _____ 197. **E.G. - 10½" Gorgeous Knotted Beads Vase**
- _____ 198. P.M. - Elec. Yellow, Blues - 8" Ruffled Imperial Windmill Bowl
- _____ 199. **B - N Rose Show Plate - Super Elec. Blues, Yellows & Purple**
- _____ 200. **Aqua O - Rose Show Bowl - Super Pastel Irid. - Roses with Opal - WOW!**
- _____ 201. W - Rose Show Bowl - Frosty with Beautiful Irid.
- _____ 202. **I.G. - Rose Show Bowl - Outstanding Irid - Very Rare**
- _____ 203. **P - Rose Show Bowl - Outstanding Overall Purple Irid.**
- _____ 204. **Near Pumpkin M - Rose Show Bowl - Rich, Beautiful Pinks, Blue, Yellow**
- _____ 205. P - P.C.E. Good Luck Bowl - Slag Effect - Fabulous Multi Irid.
- _____ 206. **G - Raspberry Milk Pitcher - Outstanding Color on this Rare Item**
- _____ 207. **P - Fashion Tumbler - Incredible Elec. Irid. - Rare - Pinhead on rim**
- _____ 208. B - Memphis Punch Base - Ultra Rare Color - Elec. Beauty
- _____ 209. **P.M. - 9½" Imp. Lustre Rose Ftd. Bowl - Rare Shape - Loaded with Yellow & Blue Irid.**
- _____ 210. **Very Rare I.B. - N Ftd. Blackberry/Daisy & Plume Ruffled Bowl - Beauty**
- _____ 211. M - Ftd. 10-Ruffle Dugan Cherries Interior & Exterior
- _____ 212. **Teal - Imp. 9" Ruffle Pansy Bowl - Glows Wildly**
- _____ 213. P - Rib Back, Good Luck Ruffle Bowl - Old Favorite
- _____ 214. P - B.W. Good Luck Ruffle Bowl - Scarce with B.W.
- _____ 215. **Rare G - B.W. Ruffled Good Luck Bowl - A Beauty**
- _____ 216. **P - P.C.E. Rib Back Good Luck Bowl - Elec. Blues & Purples**
- _____ 217. **P.M. - Rib Back Stippled Good Luck Ruffled Bowl - Super Pinks**
- _____ 218. **B - Rib Back Stippled Good Luck Ruffle Bowl - Gorgeous Blues/Pinks**
- _____ 219. Pretty M - N 3-Fruits B.W. Plate - Nice Example
- _____ 220. Dark Rich M - 6-Ruffle Fenton Holly Bowl - Dandy
- _____ 221. **Rare G - Fenton Ruffled Holly Compote**
- _____ 222. **Super M - Rich 8¼" Lotus/Grape Bowl - Top of the Line**
- _____ 223. A - 6" Peacock Tail Tri-Cornered Plate
- _____ 224. Dark M - 6½" Round Lions Bowl - Well Defined Pattern
- _____ 225. **Rich Amber - 6½" Round Flared Horse Medallion Bowl - Rare Beauty - Reddish Irid.**
- _____ 226. A - Beautiful 8" I.C.S. Fenton Autumn Acorn Bowl
- _____ 227. **Rare Vas. - 8¼" Ruffled Fenton Thistle Bowl - Scarce Beauty**
- _____ 228. Amber - 7¼" Deep, 8-Sided Stippled Rays Bowl - Base Has Exterior Swirl ?
- _____ 229. G - Spat. Ftd. 8-Ruffle N Sunflower Bowl - Pretty Blues & Pinks
- _____ 230. **Rare N Blue - Ruffled Ftd. Wishbone Bowl - Blues, Pinks & Purples**
- _____ 231. **Great M - Hearts & Flowers Compote - Top of the Line**
- _____ 232. **P - Dugan Rare 8½" Fanciful Plate - Multi Elec.**
- _____ 233. **G - 9" Sq. 8-Ruffle Fenton Plaid Bowl - Very Scarce**
- _____ 234. Gorgeous M - N 8-Sided Bushel Basket
- _____ 235. **Super Elec. B - Fruits & Flowers Bon Bon**
- _____ 236. **Super M - Fruits & Flowers Bon Bon**
- _____ 237. **Rare Multi Elec B - Stippled Fruits & Flowers Bon Bon**
- _____ 238. **Aqua O - Fruits & Flowers Bon Bon - Outstanding Pastel Irid with Deep Opal**
- _____ 239. Super B - Rich Multi Blackberry Block Tankard - Unfortunately 3" Lip Crack
- _____ 240. M - Heavy Iris Water Pitcher - Absolute Best - WOW!
- _____ 241. W - N Peacock at Fountain Water Pitcher - Crack at Top of Handle
- _____ 242. **Rare Rich Multi Irid M - 6" 4-Sides Up Little Flowers Plate**
- _____ 243. **Scarce Stretch Irid - 6½" Little Flowers Plate**
- _____ 244. P.M. - Imp. 9" Stippled Open Rose Plate - Very Pretty
- _____ 245. M - 8½" Low I.C.S. Round Up Bowl
- _____ 246. Soft P - N Smooth Back 9" Strawberry Plate - Neat Coloring
- _____ 247. **Scarce Dugan B. - 9" Windflower Plate - Rainbow Irid. - Dugan Blue Rarity**
- _____ 248. M - 9" Dugan Windflower Plate - Beautiful Example
- _____ 249. Dark A - N Stippled Rib Back 3-Fruits Plate - Purples & Golds
- _____ 250. **Rare M - 8¼" Dragon & Lotus Plate - Pinks & Golds - Great Find**

297



230



312



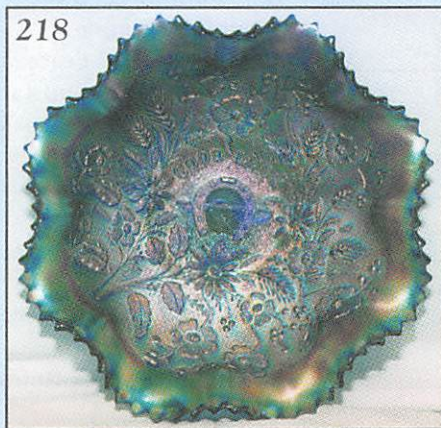
282



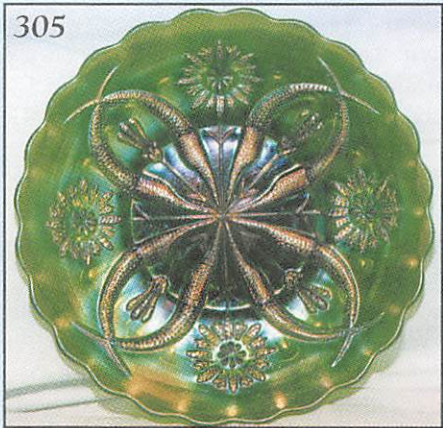
180



218



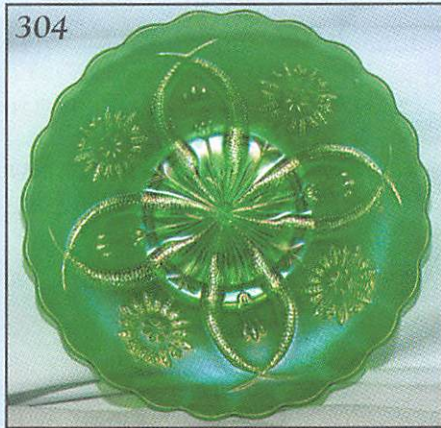
305



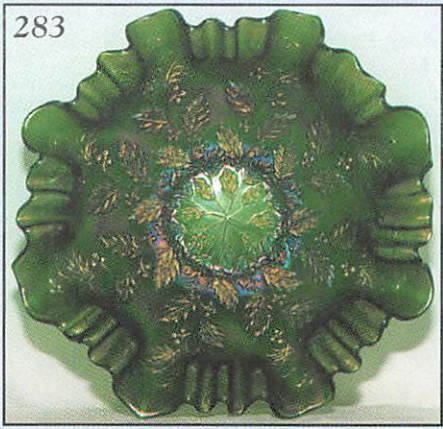
225



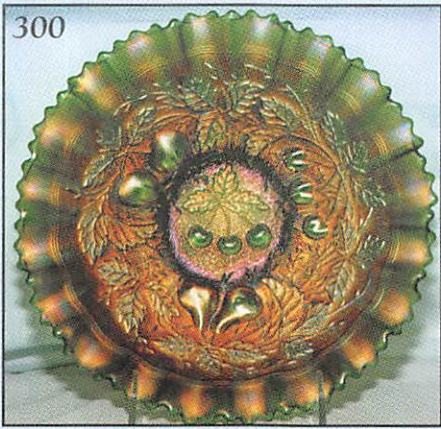
304



283



300



169



- _____ 251. Scarce Smoke - Imp. Grape Ruffled Compote - Few Sold
- _____ 252. Teal - 9¼" Imp. Grape Plate - Silver/Pinks - Glows/Black Light
- _____ 253. M - Imp. Grape Variant Plate - Soft Blues & Pinks
- _____ 254. P - 9" Imp. Grape Plate - Very Rare - Loaded with Multi Elec. Irid.
- _____ 255. R.A.O. - Blackberry Spray Hat - Fabulous Little Rarity
- _____ 256. I.B. - Spat. Ftd. Sunflower Bowl - Outstanding Pinks & Blues on a True Rarity
- _____ 257. B - Sunflower Bowl - Rarest Of All - Fabulous Elec. Blue Example
- _____ 258. G - Sunflower Bowl - Almost Emerald - Beautiful Example
- _____ 259. A.O. - N Ruffled Peacocks Bowl - Heavy Opal - Beautiful Irid. - Outstanding
- _____ 260. Pastel M - N Peacocks Ruffled Bowl - Gorgeous Blues & Yellows - The Best
- _____ 261. M - N Peacock at the Fountain Punch Bowl Only (1 Ear Chipped)
- _____ 262. M - N Peacock at the Fountain Punch Cups - 2 x \$
- _____ 263. P.M. - N Rib Back Peacocks Plate - Soft Blues, Yellows & Pinks
- _____ 264. Super P - Rib Back Ruffled Peacocks Bowl - A Beauty
- _____ 265. P - N Rib Back Peacocks Plate - Beautiful Proud Birds
- _____ 266. Clam ? - P.C.E. Stippled Peacocks Bowl - Stretch Soft Blues/Pinks, ? Champagne
- _____ 267. B - Stippled N Peacocks Plate - A Beautiful Example
- _____ 268. Rare W - Beautiful Palm Beach Tumbler
- _____ 269. Rare M - Australian Super Banded Diamonds Tumbler
- _____ 270. M - Goofus 7¼" Whimsey Palm Beach Vase - Rare - Epoxy on Base
- _____ 271. P - N 6¼" Tree Trunk Vase - 5" Top - 3½" Base - Most Unusual Size
- _____ 272. Near E.G. - N Smooth Back Ruffled Collar Base 3-Fruits Bowl - A Beauty
- _____ 273. A - 9" Fenton 3-Fruits Plate
- _____ 274. Teal - Louisa, Ftd. Rose Bowl - Very Scarce Color
- _____ 275. B - Very Nice Example of 7" Ruffled Mirrored Lotus Bowl
- _____ 276. G - Stippled Grape & Cable Rose Distilling Adv. Plate
- _____ 277. Very Scarce A - 10" Stippled Grape & Cable Ruffled B.W. Bowl - Beauty
- _____ 278. M - Pinched Kittens Toothpick Holder
- _____ 279. Super Multi Radium A - 7½" Vintage Grape Plate - WOW
- _____ 280. P - 8½" Smooth Back Ruffled Grape & Cable N Variant Bowl
- _____ 281. P - Spat. Ftd. 3-Fruits Meander Bowl
- _____ 282. Rare G - 9½" Fenton Holly Plate - Beautiful Blues, Greens, Golds
- _____ 283. E. G. - 3 in 1 Edge, Fenton Holly Bowl - Outstanding Example & Find - WOW!
- _____ 284. Also Rare Amber - 8-Ruffle Sq. Shape Fenton Holly Bowl
- _____ 285. Super Multi Elec. A - P.C.E. N B.W. Strawberry Bowl
- _____ 286. Dk. A - Souvenir ARTESIAN - S.D. Rare Swan Salt
- _____ 287. Beautiful A.O. N Leaf Beads Rose Bowl
- _____ 288. Ultra Rare A.O. - P.C.E. Stippled Grape & Cable Bowl - Pastel Irid.
- _____ 289. P - Imperial at its Best - Diamond Lace Water Pitcher
- _____ 290. P - Diamond Lace Tumblers - 3 x \$ - Very Pretty
- _____ 291. P - Diamond Lace Tumblers - 2 for 1 Price - Cracked - Top Edge
- _____ 292. A - 9" N Strawberry Plate - Turned Up Hand Grip Effect - Very Scarce Shape
- _____ 293. P - N 8¾" Grape & Cable Variant Ruffled Bowl - Super Elec. Irid.
- _____ 294. P - Gorgeous 9" Imperial Ruffled Star of David Bowl - Radium Elec.
- _____ 295. P - Super Elec. Imp. Oval Pansy Bowl
- _____ 296. Near Elec. B - Scarce N Ruffled Embroidered Mums Bowl
- _____ 297. Great Satin M - Scarce 10-Ruffle Brooklyn Bridge Bowl
- _____ 298. Hot Pattern - G - 6-Ruffle Concord Bowl
- _____ 299. Beautiful Rich M - 6-Ruffle Concord Bowl
- _____ 300. Very Rare - N P.C.E. Stippled 3-Fruits Bowl - Rib Back - Few Known
- _____ 301. Violet - N Smooth Ray Bon Bon - Beautiful and Unusual Base Color
- _____ 302. Rare Pastel Lav. - 8½" Low I.C.S. Apple Blossom Twigs Bowl - Rare Color
- _____ 303. Pastel Lav. - Stretchy 7-Ruffled Leaf Rays Dugan Nappy - Very, Very Pretty - Great Base Color
- _____ 304. E.G. - 9¼" Super 4-Flowers Variant Plate
- _____ 305. Gorgeous Thick Stretch 9½" Olive G - 4-Flowers Variant Plate - WOW!
- _____ 306. Teal - 8½" Round 4-Flowers Variant Bowl - Outstanding Example - Very Pretty Rarity
- _____ 307. M - 6¼" Pine Cone Plate - Little Dandy
- _____ 308. P - 5½" 8-Ruffle Scroll Embossed File Exterior Bowl - Super
- _____ 309. P.O. - 5" (Super Tight) C.R.E. Ski Star Bowl - Almost All Opal
- _____ 310. Rare M - 6" 4-Sides Up Sq. Plain Back Persian Medallion Plate
- _____ 311. Very Pretty M - 9½" Peacock & Grape Plate
- _____ 312. Dark M - Good Luck Variant B.W. Plate
- _____ 313. Beautiful W - 9½" Fenton Holly Plate - Gorgeous Blues & Yellows

- _____ 314. Elec. M - 9" Collar Base 3 in 1 Dragon & Lotus Bowl
- _____ 315. **B.A. - 9½" 16-Ruffle Australian Swan Bowl - Multi Radium**
- _____ 316. **Glows - Teal Green Base - Ftd. JIP Horse Medallion Bowl - Very Unusual Effect**
- _____ 317. Glows - Limish G - N Poppy Pickle Dish - Beauty
- _____ 318. **Beautiful Gold/Silver Irid, Blues - 10½" Persian Medallion Chop Plate**
- _____ 319. **Super Multi Elec. Satin Rich - Scroll Embossed Purple Plate - Popular Plate**
- _____ 320. **Rare B - Butterfly & Blackberry Hat Pin Holder - Very Rare**
- _____ 321. **Super Dark M - 9¼" Rose Garden Vase - Rare**
- _____ 322. **M - 6¾" Elephant Vase - Signed Jain - Great Detail - Very Scarce and Nice**
- _____ 323. **Beautiful M - Butterfly & Berry Hat Pin Holder - Pink Highlights on this Rarity**
- _____ 324. **Cherry Red - 6½" I.C.S. Rare Peacock Tail Bowl - Rarest of Colors**
- _____ 325. M - 9" 6-Ruffle Concord Bowl
- _____ 326. P - Radium Silver & Gold 9" Ruffled Cobblestone Bowl
- _____ 327. **Honey Amber - Rare Beautiful Squatty Palm Beach Pitcher - Few Known**
- _____ 328. **Honey Amber - Palm Beach Tumblers - Choice A, B, or C on these Rarities**
- _____ 329. **Smoke - Imp. Grape Rare Wine Decanter & Stopper Complete - Rare - Few Known**
- _____ 330. Smoke, Equally Rare, Imperial Grape Wine
- _____ 331. Radium M - Peach & Pear Dugan Banana Bowl - Beautiful
- _____ 332. **Rare N B - Stippled Grape & Cable Punch Cup**
- _____ 333. Frosty M - Enamel Decorated Cherries Tumbler
- _____ 334. **Radium M - Imperial, Rare, File Tumbler**
- _____ 335. Clam - Scarce Imperial Star Medallion Celery Vase
- _____ 336. M - Flashed Rolls ? Shot Glasses - 2 x \$
- _____ 337. **Beautiful Frosty W - N Rose Show Bowl - Blues & Pinks**
- _____ 338. **Teal G - Imperial Grape Water Pitcher - Radium Silver Irid.**
- _____ 339. **M - 5½" 6-Ruffle, Ball Ftd. Persian Medallion Bowl - Interior Grapes - Exterior Very Scarce**
- _____ 340. Pink Stretch - 6¾" Diamond Optic Plate
- _____ 341. P.O. - 6" 6-Ruffle Garden Path Variant Scarce Bowl
- _____ 342. M - Optic & Buttons Cup & Saucer - Iron Cross Mark - SA Chip
- _____ 343. **M - 6" Pedestal Imperial Heavy Diamond Vase**
- _____ 344. M - Imp. 8¼" Radium Flute & Cane Bowl
- _____ 345. G - 1983 Sea Coast Spittoon A.C.G.A.
- _____ 346. P.O. - 1982 Sea Coast Spittoon A.C.G.A.
- _____ 347. Red - 1984 Frolicking Bear Spittoon

- _____ 348. Vas. - 1983 Frolicking Bear Spittoon
- _____ 349. A.O. - 1981 Frolicking Bear Spittoon
- _____ 350. Teal - 1977 A.C.G.A. Spittoon
- _____ 351. Red - 1967 A.C.G.A. Robin Mug
- _____ 352. B - 1980 Elephant
- _____ 353. Amberina - 1981 Elephant
- _____ 354. W - 1981 Elephant
- _____ 355. B - Poppy Show Plate - A Beauty - Chip on Poppy

**50 Plus Pieces, Not Listed,
Sold at End of Catalog**

**CARNIVAL GLASS AUCTIONS
1999 CALENDAR OF EVENT
May 15, 1999**

Alton & Gladys Skouby Collection

June 19, 1999

Eastern Collection

CALL NOW TO SCHEDULE YOURS - 1 PC. OR 1,000

For Free Color Catalogs & Information Write:
Mickey Reichel

516 Third Street, Boonville, MO 65233-1536
or Call: 660-882-5292 days or 660-882-5283 evenings

NOTICE:

Let me know if you're interested in
**John Britt's Contemporary Carnival
and Assorted Tumbler Auction.**
(All Types & Colors)

2-Day Event

May 22 & 23, 1999

**FREE LISTINGS TO BE MAILED
BY REQUEST ONLY**

Thanks Mickey

If you haven't been to Boonville, Missouri and attended a Mickey Reichel Auction, I'm extending a special invitation to one of our very best yet.

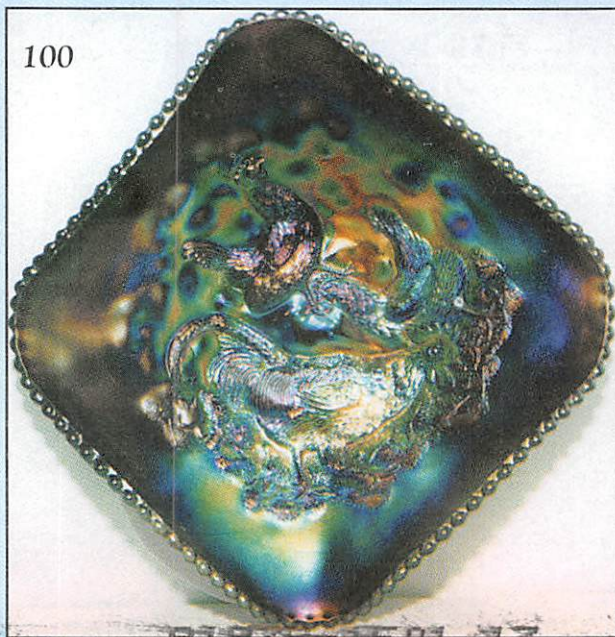
Thank You, Mickey



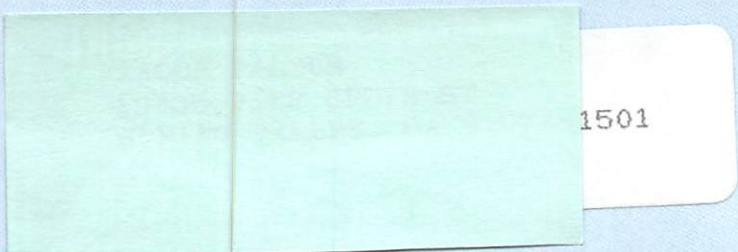
MICKEY REICHEL
ANTIQUE & AUCTION, L.C.
 516 THIRD STREET
 BOONVILLE, MO 65233-1536



FIRST CLASS MAIL



SPECIAL INVITATION TO:



1501

975-9-7501 77
 41978-1801 47