

SPRING CARNIVAL GLASS BASH

SATURDAY, MARCH 20, 1999 9:30 am

Preview on Friday 5:00 - 7:00 pm and Saturday 8:00 - 9:30 am

Presented by

Ayers Auction Service

to be held at the

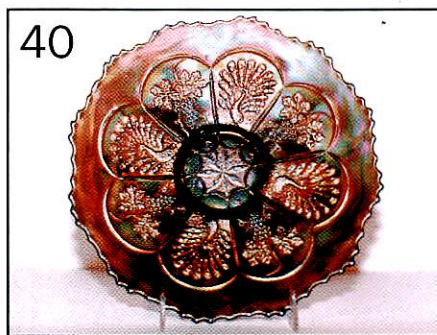
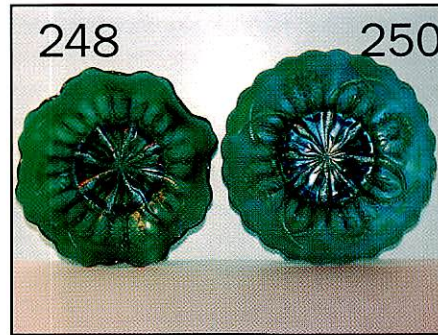
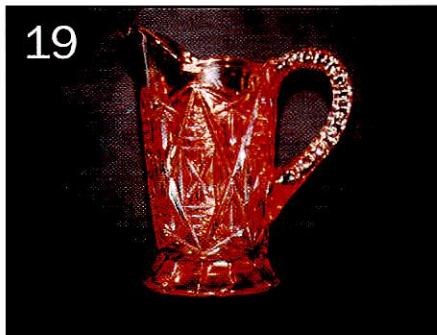
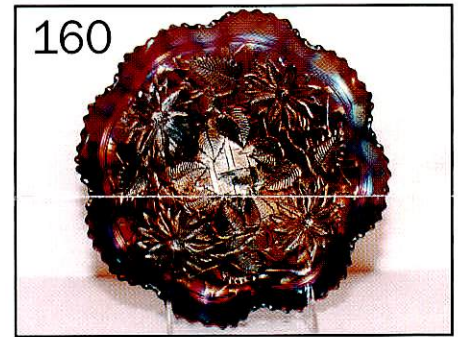
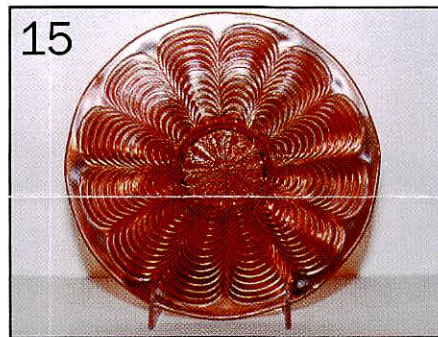
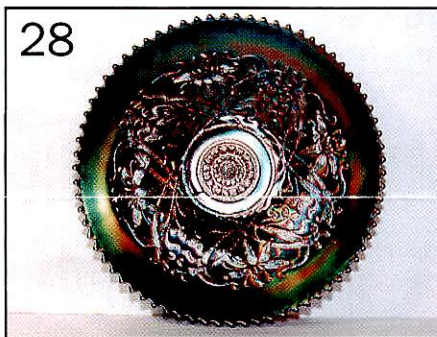
Holiday Inn, Carlinville, Illinois

Exit #60 off of Interstate 55 on the west side of the road.

Just 30 miles south of Springfield, Illinois and 60 miles north of St. Louis, MO.

Call (800) 322-7546 for Reservations

by March 6th to get a special room rate mention the Auction Service block of rooms.



Spring Carnival Glass Bash Auction
featuring LIVE TELEPHONE BIDDING

presented by

Ayers Auction Service

on **Saturday, March 20, 1999 - - 9:30 AM**

with Preview on Friday 5:00-7:00 pm and Breakfast Preview Sat. 8:00-9:30 am
at the **Holiday Inn, Carlinville, Illinois. Exit #60 off of Interstate 55 on the west side of the road.**

Just 30 miles south of Springfield and 60 miles north of St. Louis.

Call (800) 322-7546 NOW for reservations.

Must mention Ayers Auction block of rooms for discounted rate.

Room rate blocked at \$65.00, tax included per night. Block rates reserved until 03/06/99.

We are featuring LIVE TELEPHONE BIDDING during the auction. We look forward to seeing you or hearing from you soon. We are now accepting glass for our 3rd Annual FALL CARNIVAL GLASS SALE. Please call us at (309) 925-3115, or fax us at (309) 925-7777, or e-mail us at ayers@dpc.net. Visit our web site at www.8dsland.com - Ayers Auction Service.

Terms: Cash or check w/proper ID. **NO BUYERS PREMIUM.**

Live Telephone Bid Policy

1. Live telephone bids will be arranged by sending the number(s) of the item(s) and your name, address, home phone # and the phone # where you can be reached on the day of the auction, Sat. March 20, 1999, during the hours the auction will be occurring, CST to: **Ayers Auction Service, P.O. Box 320, Tremont, IL 61568-0320**
2. Be aware, there will be a \$5.00 charge per phone call placed to you during the auction. This cost is in addition to Shipping, Insurance, and Handling Charges. You will be billed for each phone call, even if you are not the successful buyer.
3. We ask that you do not tie up the telephone lines by speaking at length with the staff of the Auction Service proceeding the completion of your LIVE BIDDING. The staff will have multiple calls to complete and your cooperation is appreciated. Bidders will be notified by a phone call if their bid(s) are successful. This call will be made 1-3 days after the auction is over.
4. Please have all bids in by **Tuesday, March 16th, 1999**. All bids received after this date may not be carried out.
5. Arrangements to participate in LIVE TELEPHONE BIDDING may be made with Ayers Auction Service over the telephone, or by Fax, or by E-mail.

Write-In Bid Policy

1. Write in (absentee) bids will be accepted by sending the numbers of the item(s) desired and the amount bid on each to:
Ayers Auction Service, P.O. Box 320, Tremont, IL 61568-0320
2. All absentee bids may be done with the Auction Company over the telephone: (309) 925-3115, by fax: (309) 925-7777, or by e-mail to ayers@dpc.net
3. There will be a \$5.00 handling charge for each successful absentee bid. Shipping and insurance charges are additional.
4. If interested in placing an absentee bid you must contact Amy or David NLT **Tuesday, March 16th, 1999**.
5. All bidders will be notified by a phone call if their bid(s) are successful. This call will be made 1-3 days after the auction is over.
6. **Please place bids in the following increments: \$1 - \$300 use \$5.00 increments; \$300 & up use \$25.00 increments.**
7. If you do not receive an item that sold for less than your bid, assume we canceled your bid because the piece of glass had below average color, manufacture problem, damage, or was not listed correctly.
8. To receive price list for this auction send \$3.00 and SASE to the above address. (Make checks payable to Amy Ayers.)

1. M—Imp. Star & File 4" stemmed Wine.
2. B—(Contemporary) St. Clair Indian Head Toothpick Holder.
3. M—Rolls juice size Tumbler.
4. Vas—Fenton Grape & Cable 7 1/2" ruffled Bowl. Great color and scarce.
5. W—N Hearts & Flowers 9" ruffled Bowl. Pretty pinks, blues and green highlights.
6. Clam—Imp. Pillar & Flute 8" oval Pickle Dish w/ Iron Cross marking.
7. B—(Contemp.) Imp. Top Hat Toothpick Holder, ca 1975. (IG)
8. Choice—(2 ea.) Fenton Orange Tree Mugs Lg. size—Blue and Standard size—Marigold.
9. P—Imp. Grape 9" deep round Bowl has interior but the outside is lacking.
10. Olive G—Four Flowers Vt. 9" Plate w/Thumbprint ext. Factory ground base. Purple & gold highlights. Rare Color.
11. M—(4 ea.) Imp. Fashion Punch Cups 4 x \$.
12. Crystal (Not Carnival)—8 paneled 13 1/2" Vase w/ fine ribs near bottom. Possibly Heisey.
13. B—Fenton Fine Rib 12 1/4" Vase.
14. M—My Lady's Powder Jar. Nice.
15. M—Fenton Peacock Tail 9" Plate. A Super Rare Find!
16. M—N Three Fruits 9" Plate, w/ sawtooth edge & plain back. Multi-color iridescence. Super Scarce.
17. M—Fenton Mikado ICS Compote. Fenton at its best.
18. PO—Dugan Apple Twigs 8" round Bowl w/ sawtooth edge.
19. M—Brockwitz Diamond Cut Shields Pitcher. Super Rare. Factory flaws on base. Eye popping finish.
20. P—Imp. Broken Arches Punch Bowl (No Base). Silvery Iridescence.
21. IB—N Embroidered Mums 9" ruffled Bowl w/sawtooth edge. Beautiful & rare
22. M—Jenkins Cut Flowers 10" Vase.
23. Dark M—N Fruits & Flowers stemmed Bon Bon. Pumpkin.
24. B—N Grape & Cable 9" stippled Plate. Stunning color.
25. Amber—Imp. Open Rose 9 1/4" Centerpiece Bowl. All I can say is WOW, the Best!
26. M—N Wild Strawberry Handgrip Plate. Real Pretty.
27. G—N Grape & Cable Pair of Candlesticks.
28. P—N Wishbone 10" collar base Chop Plate w/Basketweave ext. Beautiful gold, blue & purple highlights. Scarce.
29. Choice—(12 ea.) Tumblers.
M—Fenton Butterfly & Berry.
Crystal—N Peach w/ ruby stained fruit & gold trim.
M—Embossed Flowers (C. Whitley book, LastPg).
G—Hand Painted Enamel – Flower.
A—N Grape & Cable, minor pinpoint on top lip.
Crystal—N Cherry Lattice w/ ruby stained fruit & gold trim.
M—Imp. Open Rose.
- B—Hand Painted Enamel – Cherry Blossom.
Lt. M—Dugan Stork & Rushes.
Crystal—N Strawberry & Cable w/ruby stain fruit and gold trim.
Red Flashed—Waterlily Embossed.
M—Fenton Waterlily & Cattails.
30. B—(Contemp.) Imp. Texas Boot Toothpick (IG).
31. M—US Glass Co. Stork ABC 7 1/2" Bowl, extremely dark color.
32. B—Fenton Chrysanthemum 10" ruffled Bowl, ball footed. Multi-colored iridescence.
33. M—Fenton Chrysanthemum 9" ruffled Bowl, ball footed. Beautiful pastel colors.
34. PO—Dugan Many Rib 3-sides up crimped edge 4" Vase, chipped on marie.
35. M—Imp. Morning Glory 11" JIP Vase. Fantastic Example!
36. Seamist G Opal—(Contemp.) Fenton Holly ruffled Bowl, made for QVC in 1992.
37. B—(Contemp.) Swan Pulling an open oval Basket Salt Holder/Toothpick.
38. PO—Dugan Petal & Fan 10 1/2" ruffled Master Berry Bowl w/ Jeweled Heart exterior. Pretty.
39. PO—Dugan Petal & Fan 6" ruffled Sm. Berry Bowl w/ Jeweled Heart exterior.
40. B—Fenton Peacock & Grape 9" Plate w/ collar base. Super! Only a couple of these known. Highlights are WOW!
41. B—Grand Thistle Tumbler. Perfect and is a toughie
42. PO—Dugan Border Plants dome footed pulled-up Bowl. Neat little piece.
43. M—Fenton Butterfly & Berry 7 Pc. Berry Set. Nice.
44. M—Fenton Blackberry Bramble ruffled Compote.
45. G—N Three Fruits 9" Plate w/ Basketweave ext. and collar base.
46. A—Fenton Feathered Serpent tri-cornered Plate. Beautiful!
47. PO—Westmoreland Daisy Wreath 8 1/2" ruffled Bowl w/sawtooth edge.
48. Red—(Contemp.) Indiana Glass 1974-75 HOACGA Good Luck Pitcher and 6 Tumblers.
49. Red—(Contemp.) Indiana Glass 1976 HOACGA Good Luck Shot Glasses-Set of 6.
50. B—Mlbg Hanging Cherries 5" Sauce w/3in1 edge. Only a handful known. Rare and desirable. A personal favorite.
51. Dark M—Fenton Orange Tree Loving Cup. Absolute heart breaker.
52. A—Dugan Stork & Rushes Mug. Fine example.
53. A—Fenton Orange Tree standard size Mug.
54. M—Cambridge Inverted Feather Compote. Pretty.
55. W—Fenton Orange Tree Sherbert. A little on the light side but a real toughie to find.
56. Choice (2 ea.) G—N Singing Birds Sm. Berry Bowls. Sweet examples.
57. Pastel M—N Good Luck ruffled Bowl. Very Nice.
58. Crystal—(Contemp.) Cherry & Cable Pitcher and 4 stemmed Goblets w/ stained fruit and gold trim.

59. Aqua—Fenton Kittens 4 sided Bowl. Base crack and slightly worn inside. Still a good shelf piece.
60. **Red/Amberina—Fenton Vintage Fernery. Rare and hard to find.**
61. M—US Glass Co. Rising Sun 3 1/2" Juice Tumbler. Scarce.
62. A—N Wild Strawberry 6" ruffled Sauce. Pretty!
63. M—Fenton Butterfly & Berry Master Bowl w/ Fantail interior. Beautiful example.
64. M—Fenton Butterfly & Berry 5" small berry Bowl. Wonderful!
65. B—Fenton Fine Rib 9" Vase. Standard size 2 3/4" Base. Electric.
66. **B—Fenton Captive Rose Plate. Beautiful green & purple highlights.**
67. A—N Fine Cut & Roses Rose Bowl w/Fancy int. Minor nick on toe, still a beauty.
68. M—Imp. Star Medallion Milk Pitcher.
69. M—Fenton Diamond & File 7 1/2" Bowl.
70. **Honey Amber—US Glass Cosmos & Cane square Bowl w/ Headdress int. Super Rare.**
71. **Red/Amberina—Fenton Open Edge ruffled Basket. Absolutely beautiful.**
72. P—Imp. Hattie 8" ICS Bowl. Super-duper! Pinks, purples and gold highlights.
73. M—Imp. Ripple 10" Vase w/ 20 pt. star on base.
74. M—Fenton Horse Medallion Nut Bowl.
75. **W—Fenton Diamond & Rib 10 1/2" Vase. Standard size 3 1/4" base. Scarce color.**
76. M—Fenton Knotted Beads 10 1/2" Vase, crimped flared out mouth.
77. M on Milk Glass—7 1/2" Vase, similar to Pillar Flute
78. G—N Feathers 11" Vase, has marigold iridescence.
79. M—Imp. Crackle spittoon.
80. **P—Mlbg Many Stars 10" ruffled Bowl w/sawtooth edge & 6 pointed star in center. Fantastic radium.**
81. Red/Amberina—Fenton Open Edge JIP Hat, cracked base but still a good shelf piece.
82. Yellow Vas (Not Carnival)—(Contemp.) Westmoreland Victorian-style 3ftd Pair of Candlesticks.
83. G—(Contemp.) Treasure Chest 10 x 6 x 6 hinged w/ mirror inside on base. Unusual.
84. **AO—N Bushel Basket. Good example/perfect ft.**
85. Choice—M & G—Imp. Grape Cup and Saucer.
86. BA—Crown Crystal Gum Tips 9 1/4" Vase, tool mark on some ribs. Great size.
87. Lt. B Opal—(Contemp.) Fenton #91261A Poppy Rose Bowl/Vase. Limited Edition of 94 made for Singleton Bailey ca. 1988.
88. A—(Contemp) Fenton # 8695 ca. Aztec Toothpick Holder circa. 1983. Electric.
89. M—Imp. Thin Rib & Drape 6" Vase. A real cutie.
90. P—N Grape & Cable Sweetmeat. Wonderful Example.
91. M—Sowerby Lea Sugar & Creamer. Nice & Dark.
92. M—Sowerby Lea oval boat shape Celery Dish w/ 2 handles.
93. Westmoreland Shriners Champagne Glass 1911 Rochester N.Y. Pretty.
94. Westmoreland Shriners Champagne Glass 1909 Louisville K.Y. Both are nice examples.
95. **W—N Hearts & Flowers ruffled Compote. Frosty with pretty pinks & blues.**
96. M—N Hearts & Flowers ruffled Compote. High gloss finish.
97. Cel. B—Smooth Panels 11" Stretched Vase. 3" base and 6" mouth. Neat.
98. Vas—Fenton Blackberry Spray JIP crimped Hat, chip on marie, still very cute.
99. **G—Fenton Orange Tree 9" Bowl w/ Tree Trunk center and 3in1 edge. Super & Rare.**
100. Clam—Imp. Waffle Block handled Basket.
101. **Electric P—Imp. Shell & Sand ruffled Bowl. The best one we have ever seen. WOW!!!**
102. M—US Glass Co. Rising Sun 4" Tumbler. Fantastic color.
103. A—Mlbg Holly Swirl deep Bon Bon.
104. M—Mlbg Holly Swirl deep Bon Bon. Both are beautiful examples.
105. **G—N Blackberry & Rays ruffled Compote. Rare & beautiful.**
106. **P—N Raspberry Compote. Spectacular & very scarce compote.**
107. B—Fenton Vintage Single Lily Epergne, minor roughness on lily base.
108. M—Fenton Peacock & Grape 9" ICS collar base Bowl.
109. M—N Bullseye & Leaves 9" ruffled Bowl.
110. **Electric B—Fenton Rustic 9 1/2" Vase. 3 1/4" base. Fantastic.**
111. G—Fenton Rustic 9 1/2" Vase, 3 1/4" base.
112. M—Dugan Floral & Grape JIP Hat. A real beauty.
113. PO—Dugan Four Flowers 5" round Bowl.
114. PO—Dugan Four Flowers 6" ruffled Bowl.
115. **Cel. B—Fenton Open Edge ruffled Basket w/ awesome color.**
116. M—Imp. Grape 6 1/2" Plate. A super little plate.
117. **P—Dugan Flowers & Frames 9" ruffled Bowl w/ dome ft. Pretty gold & purple highlights.**
118. **Dark M—N Rose Show Variant 9" ruffled Bowl. Super dark highlights.**
119. P—N Leaf & Beads Rose Bowl w/ Rays interior. Satin finish. Nick on one toe.
120. **G—Mlbg Rosalind 9" ICS Bowl w/ scallops and satin finish. Great highlights.**
121. **Crystal w/M—Golden Thistle 5" Plate. Super rare little gem.**
122. M—Imp. Twins 2Pc. Fruit Bowl. Perfect example. Pretty.
123. M—Imp. Windmill 5" Berry Bowl.
124. M—Fenton Panther 5" ruffled Sauce w/ Butterfly and Berry exterior.
125. M—US Glass Omnibus Tumbler. A real toughie. Rarely seen like this, without ground base.
126. M—Imp. Star & File Water Pitcher. Epoxy on marie. Great coloring.
127. G—Fenton Iris ruffled Compote, satiny and nice.
128. P—Dugan Holly & Berry Gravy Boat. Electric.
129. Choice (2 ea.) M—Dugan Rambler Rose Tumblers.

130. M—Fenton (Ribbed) Holly goblet shaped Compote.
131. **A—Dugan Pony 9" ruffled Bowl. Electric and spectacular.**
132. **Vas. Opal—Fenton Dragon & Lotus 9" ruffled Bowl. Glows. Scarce item, but a little light.**
133. M—Mlbg Holly Bon Bon, card tray shape.
134. G—Fenton Long Thumbprint 10" Vase.
135. PO—Dugan Leaf Rosette 7" tri-cornered Plate. Cute.
136. **Cel B—N Concave Diamonds 7 Pc Water Set plus lid makes (8). Nice stretchy effect. Great color.**
137. M—Imp. Grape Water Carafe w/ great stopper.
138. **G—N Good Luck 9" Plate w/ Basketweave ext. Multi-color hues. Super!**
139. PO—Dugan Bells & Beads 6" CRE & ruffled Bowl. Beautiful example.
140. W—Fenton Cherry Chain 9" ICS Bowl w/ Orange Tree exterior. Very pretty.
141. Lt. M—Imp. Octagon Wine Decanter w/ perfect Stopper.
142. Smoke—Imp. Hattie 9" ICS flared out Bowl. Nice & pastel.
143. **Dark M—Crown Crystal Glass Co. (Australian) Butterfly Bower 6½" ruffled Bowl. Beautiful.**
144. **A—Mlbg. Zig Zag 9" Bowl w/ 3in1 edge. Satiny finish. Scarce and beautiful.**
145. M—N Leaf & Beads flared out round Nut Bowl w/ sawtooth edge & perfect feet.
146. W—(Contemp.) Smith Glass Co. Diamond Lace 9" round Bowl w/ a slightly ruffled lip.
147. A—Fenton Blackberry Spray 2 sides up Hat.
148. **M over Milk Glass—Imp. Floral & Optic ftd Rose Bowl. Rare color.**
149. **PO—Dugan Persian Garden 11" Master Ice Cream Bowl. A little light.**
150. M—European Fleur De Lis Pitcher. Absolutely breathtaking.
151. **Dark M—N Three Fruits stippled 9" ribbed back Plate. Stunning dk marigold w/ beautiful highlights**
152. **Fiery A—N Three Fruits stippled 9" ribbed back Plate. Little wear on fruit. Beautiful and rich multicolored. Gorgeous plate.**
153. A—(Contemp.) Fenton "The Glass Maker" Plate – first of the Craftsman series in 1970.
154. B—(Contemp.) Fenton Buttons and Arch mini Mug/Toothpick Holder ca. 1986.
155. **BA—Dugan Lined Lattice 7½" Vase. Electric Highlights. Scarce size for this little beauty.**
156. Ceramic Plate—ICGA 1968 Calendar Plate. The club's first souvenir item. Has the then-officers & club infomation on backside.
157. M—Imp. Fashion Punch Bowl Base or Fruit Bowl Base. Perfect & dark.
158. BA—N Memphis Punch Bowl or Fruit Bowl Base. Hard to find.
159. Choice (2 ea.) M—Fenton Butterfly & Berry Tumblers. Both dark and equally pretty.
160. **P—N Poinsettia and Lattice 9" ftd ruffled Bowl w/ sawtooth edge. Electric highlights. Super-duper. It's got it all.**
161. M—Dugan Golden Grape Rose Bowl.
162. Smoke—(Contemp.) Imp. Homestead 10½" Plate.
163. A—N Fern Compote w/ Daisy & Plume ext. Super coloring.
164. PO—Dugan Six Petals 8" ruffled Bowl.
165. Dark M over Vas—Fenton Blackberry Spray ruffled Hat. Glows brightly.
166. A—Mlbg Blackberry Wreath 7½" ruffled Bowl. Radium.
167. **Past. M—N Grape & Cable 9" collar base Plate w/ Basketweave exterior. Beautiful highlights.**
168. Choice (2 ea.) M—Mlbg Hobstar & Feather Punch Cups. Nice.
169. Choice (4 ea.) M—Fenton Sailboat stemmed Wines. 2 are dark and 2 are light.
170. M—Davidson (English) Split Diamond mini Creamer.
171. M—Dugan Mary Ann 6" Vase w/ 2-handles. Very pretty. Good example.
172. P—N Nippon 9" PCE Bowl. Dark & satiny. Couple of no harm nicks on interior.
173. **A—Fenton Garden Mums 6" Plate. Scarce little plate w/ silver Highlights. Next best thing to having an advertising piece.**
174. Choice (2 ea.)—(Contemp.) Fenton Strawberry Toothpicks ca. 1971.
Amethyst—#8295CN
Marigold—#8295CO
175. M—Fenton Dragon & Lotus 9" ruffled low Bowl. Fantastic example.
176. Choice (2 ea.) Mar & Pur.—Imp. Flute Toothpick.
177. Amber—Imp. Heavy Grape Chop Plate. Minor buff spot on 1 grape, still very pretty.
178. M—N Poppy Oval Pickle Dish w/ ruffled edge. Nice.
179. B—Fenton Two Flowers 5" Sauce. Electric.
180. A—Dugan Double Stem Rose 8" ruffled dome ftd Bowl. Fantastic.
181. BA—Dugan Maple Leaf stemmed Small Berry Bowl w/ Peacock Tail int. Radium & very nice.
182. M—Sowerby Crosshatch sm. stemmed Creamer.
183. **M—Crown Crystal Glass Co. (Australian) Butterfly & X-mas Bells small round Compote. Beautiful Hues.**
184. B—Fenton Persian Medallion Rose Bowl w/ Smooth Rays interior. Radium finish.
185. A—Fenton Holly ruffled Bowl, rough base.
186. **Amber—Imperial Lustre Rose Fruit Bowl. Super-Duper jumps out at you color.**
187. A—Fenton Ribbon Tie 9" Bowl w/ 3in1 edge.
188. Dark M—Sowerby Pineapple 6¾" fluted Bowl. Even and dark coloring.
189. G—Fenton April Showers 10½" Vase.
190. A—Mlbg Blackberry Wreath 9" Bowl w/ 3in1 edge and satiny iridescence.
191. Choice (2 ea.)—(Contemp.) Fenton ACGA Seacoast Spittoons,
PO—1982 Dayton, OH
Green—1983 Camp Hill, PA.

192. M—**Jain Hand Vase 5 1/2" tall, w/o watch or ring. Bruised on base at seam, possibly during manufacturing. Still a little Beauty.**
193. M—Imp. Grape 9" low ruffled Bowl.
194. M—N Grape Leaves 8 1/2" ruffled Bowl.
195. M—Fenton Vintage 9 1/2" ICS Bowl w/ sawtooth edge. Satiny.
196. G—**Mlbg Rays & Ribbons 9 1/2" round Bowl w/ scallops & sawtooth edge. Rare & Radium.**
197. A—N Thin Rib 9" Vase. Standard size 3" base.
198. A—Fenton Fine Rib 9 3/4" Vase. Standard size 2 3/4" Base.
199. P—N Diamond Point 9" Vase. One pin head in the middle of the pattern.
200. **Past. M—N Greek Key 9" ruffled Bowl w/ Basketweave ext. Beautiful example.**
201. Choice (2 ea.)—(Contemp.) Imp. Rose Presnick Museum Mugs,
Smoke—1969
Saph. B—1972.
202. A—Fenton April Showers 10" Vase w/ Peacock Tail interior.
203. M—Dugan Cherries footed ruffled Bowl.
204. B—Fenton Blackberry Spray JIP Hat, crimped.
205. Choice (2 ea.) M—Imp. Beaded Bullseye 12" and 12 1/2" Vases. Nice colors on this bro & sis pair.
206. M—Mlbg Grape Wreath Variant 8" ruffled Bowl w/ 8 pointed center star.
207. **AO—N Leaf & Beads Rose Bowl. Lots of opal and super marigold overlay.**
208. B—Dugan Vintage 10" Bowl w/ 3in1 edge. Satiny.
209. BA—(Contemp.) Wheaton Co. 1968 ICGA St. Louis Decanter Bottle.
210. A—Dugan Heavy Iris Tumbler.
211. G—N Fruits & Flowers 10" ruffled Bowl w/ sawtooth edge.
212. Choice (4 ea.) Punch Cups.
M—Imp. Fashion
A—Fenton Wreath of Roses
G—Fenton Wreath of Roses
BA—N Memphis
213. W—Fenton Orange Tree 9" Plate w/ Bearded Berry exterior. Pretty pink, purples & blues.
214. W—Fenton Holly 9" Plate. Very nice but not frosty.
215. P—Dugan Wreathed Cherry oval 6 1/2" Berry Bowl. Roughness on edge at the mold mark.
216. B—Fenton Two Fruits Bon Bon. Super example.
217. M—Sowerby Thistle & Thorn Open large-mouthed Sugar Bowl.
218. M—Fenton 5" Pine Cone ruffled Sauce.
219. Olive G—(Contemp.) St. Clair Indian Head Toothpick. Electric w/ script style "Joe St. Clair" molded on the bottom.
220. A—N Three Fruits 10" ruffled Bowl w/ sawtooth edge. Little bit of wear on fruit.
221. PO—Dugan Wide Rib 13 1/2" Vase.
222. M—Imp. Scroll Embossed 9" ruffled Bowl w/ File exterior.
223. IG—Pastel Swan. A real cutie! Beautiful example.
224. M—Dugan Four Pillars 9" Vase. Perfect feet.
225. **P—N Three Fruits 9" Plate w/ Basketweave exterior. Minor wear on fruit. Still a beautiful plate.**
226. M—Fenton Scale Band 6 1/2" Plate. Gorgeous highlights.
227. **G—Fenton Pine Cone 6" Plate. Beautiful example.**
228. Teal—(Contemp.) Fenton #9185OI Paneled Daisy pedestal Covered Candy Dish.
229. B—(Contemp.) St. Clair S-Repeat Toothpick ca. 1976.
230. PO—Dugan Dogwood Sprays dome ftd ruffled Bowl. Manufacturer rough base. Beautiful example.
231. Mar on Milk Glass—Westmoreland Smooth Rays 8 1/2" Bowl. Good example.
232. Lav—(English) Hobstar & Cut Triangles 7" round Bowl w/ slight ruffling on edge.
233. M—Imp. Octagon two handle upright Celery. Nice.
234. M—Imp. Hobstar & Tassel 6" ICS Bowl. Rare in Marigold.
235. **W—Fenton Rose Spray JIP Compote. Scarce color. A cute mini.**
236. Amber—Fenton Orange Tree Mug.
237. Choice (4 ea.)—Fenton Bells.
Lav—Hand Painted ruffled Bell.
Teal Opal—HOACGA 1986 Good Luck Bell, in honor of Fenton.
Cobalt Blue—HOACGA 1987 Good Luck Bell, in honor of Millersburg.
Mar—HOACGA 1988 Good Luck Bell, Imperial.
238. B—Fenton Dragon & Lotus 9" low ruffled Bowl w/ sawtooth edge. Pretty purple & gold highlights
239. P—N Three Fruits Medallion 9" ruffled Bowl w/ spad. ft & sawtooth edge. Great multi-colors.
240. P—Dugan Fisherman's Mug. Good example.
241. G—N Beaded Cable Rose Bowl. Perfect feet.
242. BA—Dugan Nautilus Sugar Whimsey. Curled up ends. First one I have seen in BA. Neat.
243. PO—Dugan Daisy Dear 7" crimped up Bowl.
244. Lt. PO—Westmoreland Pillow & Sunburst 8" ruffled Bowl.
245. A—Fenton Holly ruffled Bowl. Beautiful.
246. Dark M—Fenton Vintage Fernery w/ scroll feet. Nice.
247. **Electric B—N Beaded Cable Rose Bowl. Perfect feet. Absolute beauty.**
248. **Emerald G—Four Flowers Variant 9" ruffled Bowl. Unlisted in bowl shape for this color. Excess glass on outer edge. Super duper bowl.**
249. IB—N Fine Cut & Roses Rose Bowl w/ Fancy interior. Super.
250. **Emerald G—Four Flowers Variant 9" Plate w/ scalloped edge & Thumbprint ext. Small sliver on backside. Fantastic hues on this beauty.**
251. P—Dugan Victorian large ruffled Bowl. Very little color.
252. **Pastel M—N Strawberry 9" Bowl w/ PCE and plain back. Spectacular example.**
253. **G—Mlbg Hanging Cherries 10" ICS Bowl. Beautiful satin finish.**
254. P—Mlbg Hanging Cherries 10" ICS Bowl. True purple. Couple minor nicks on base.

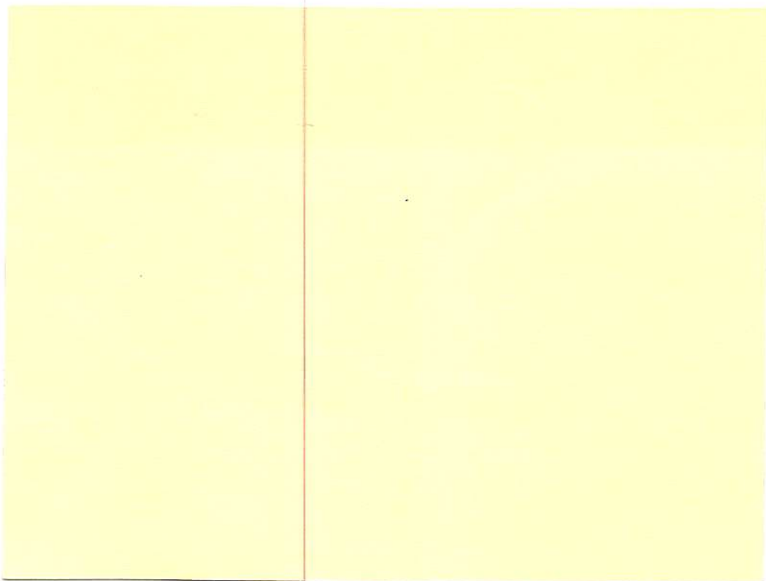
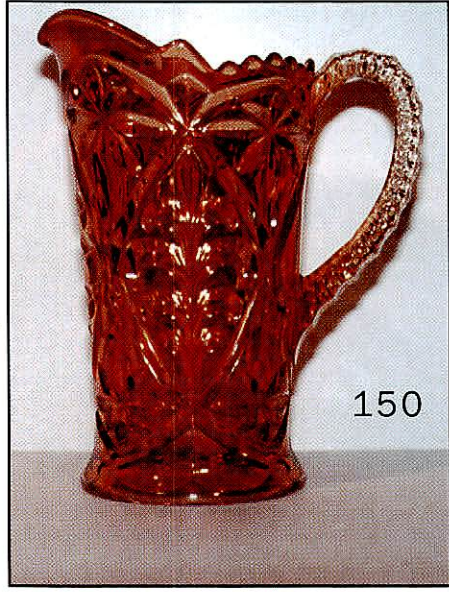
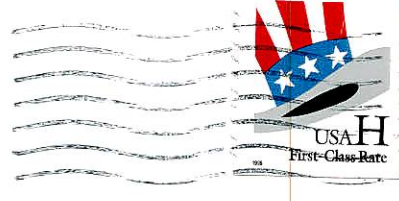
- _____ 255. **M—Fenton Fentonia 5 Pc. footed Berry Set. Super scarce set.**
- _____ 256. Smoke—Imp. Scroll Embossed 5" Sauce w/ File exterior. A real toughie.
- _____ 257. Amber—Imp. Pansy Nappy.
- _____ 258. W—Fenton Water Lilly Bon Bon. 4 sides up. Frosty.
- _____ 259. **M—Imp. Chrysanthemum Chop Plate. Uneven iridescence from heating process. Scarce.**
- _____ 260. Teal—Imp. Heavy Grape 6" Bowl.
- _____ 261. Mar on Milk Glass—Westmoreland Two Seventy Compote. Cool color.
- _____ 262. PO—Dugan Starfish Bon Bon. Cute.
- _____ 263. G—N Daisy & Plume 3ftd Rose Bowl w/ Smooth Rays interior. Nick on one toe.
- _____ 264. M—Dugan Pony 9" ruffled Bowl. Satin finish.
- _____ 265. **AO—N Drapery Rose Bowl. Super example.**
- _____ 266. M—Sowerby Cut Arches Banana Boat. Beautiful cut pattern.
- _____ 267. M—Brockwitz Daisy & Cane 6" stemmed Compote. A real toughie.
- _____ 268. Lt. M—Brockwitz Asters 6" stemmed Compote. Nice.
- _____ 269. **A—N Blossomtime Compote. Pretty multi-colored finish.**
- _____ 270. Vas—Smooth Rays Sherbert. Glows brightly.
- _____ 271. M—Fenton Stream of Hearts ruffled Compote. Neat.
- _____ 272. P—Imp. Heavy Grape 8" Plate. Super.
- _____ 273. M—Westmoreland Concave Flute Rose Bowl.
- _____ 274. G—N Wild Rose 3 footed Candy Dish.
- _____ 275. **B—Fenton Heart & Vine 9" Plate. Super duper color on this very rare plate.**
- _____ 276. Lt. M—Imp. Heavy Grape 8" flat Plate. Nice.
- _____ 277. A—N Daisy & Plume 3 footed Compote w/ Raspberry interior.
- _____ 278. G—N Three Fruits 9" ruffled Bowl w/ collar base & Plain back. Beautiful example.
- _____ 279. IG—Mama Frog, 4 1/2" x 2 1/4". Neat.
- _____ 280. Lav—Baby Toad, 2 1/2" x 2 1/4". Too cute!
- _____ 281. Smoke—Imp. Star Medallion 6" Pitcher.
- _____ 282. B—Fenton Blackberry Banded ruffled Hat. Satiny.
- _____ 283. B—Fenton Persian Medallion ruffled Comp. Nice.
- _____ 284. M—Imp. Open Rose 7 1/2" ICS ftd Bowl. Great.
- _____ 285. **A—Mlbg Rosalind 10" ruffled Bowl. Beautiful w/ multi-color radium.**
- _____ 286. P—N Daisy & Plume 3 footed Rose Bowl w/ Stipple Rays interior. 2 rough feet.
- _____ 287. G—Imp. Grape 6 1/2" Plate. Neat.
- _____ 288. P—Mlbg Peacock Tail Variant. Satin. Minor chip on marie.
- _____ 289. A—Fenton Autumn Acom 9" ruffled Bowl. Satin finish.
- _____ 290. G—Mlbg Peacock Tail Variant. Beautiful radium iridescence.
- _____ 291. A—Fenton Heart & Vine 9" ruffled Bowl. Tiny spot on edge has been polished.
- _____ 292. PO—Dugan Wishbone & Spades 6" ruffled Bowl.
- _____ 293. PO—Dugan Jeweled Heart 6" ruffled Bowl. Rare sauce.
- _____ 294. B—Fenton Peacock & Grape ruffled 8 1/2" Bowl.

- _____ 295. **A—Mlbg Seaweed 10" Bowl w/ 3in1 edge. Beautiful & intricate.**
- _____ 296. A—Westmoreland Scales 5" Plate.
- _____ 297. Mar over Custard—Fenton HOAGA 1983 Good Luck Loving Cup.
- _____ 298. A—Dugan Petals ruffled Compote w/ sawtooth edge.
- _____ 299. Vas—Fenton Vintage Wine Glass.
- _____ 300. G—Fenton Flowers 3 twig ftd Rose Bowl, internal cracked feet.
- _____ 301. Choice (2 ea.) Paperweights—
R—Mosser Glass Co, Bambridge, Ohio
Cel B—Bicentennial "Washington Crossing the Delaware" w/ Holly City Bottle Co. label.
- _____ 302. P—N Grape Leaves 9" Bowl w/ 3in1 edge.
- _____ 303. P—N Strawberry 9" stippled Plate. Berries in center are short on iridescence.
- _____ 304. M—Imp. Acanthus 9" ruffled Bowl. Nice.
- _____ 305. Red (Contemp.) Fenton Daisy Diamond handled Basket. Nice.
- _____ 306. Clear to M—Dugan Beauty 8" Bud Vase.
- _____ 307. B—Fenton Holly Hat.
- _____ 308. M—Imp. Waffle Block Basket. Nice & dark.
- _____ 309. A—Fenton Vintage ruffled Compote.
- _____ 310. M—Imp. Star & File Compote.
- _____ 311. PO—Dugan Question Marks stemmed Bon Bon. Nice Example.
- _____ 312. PO—Dugan Fishscale & Beads 7" Bowl in banana boat shape. Scarce.
- _____ 313. Choice (2 ea.) M—Ashtrays.
1 is Polo
1 is similar to Roth Bros. but plain.
- _____ 314. Choice (2 ea.) A & P—N Fruits & Flowers 6" ruffled Sauces. Dark iridescence.
- _____ 315. **B—Fenton Rustic 14 1/2" Vase. Spectacular! 4 1/4" Base & 5" mouth.**
- _____ 316. M—Dugan Grape Delight Rose Bowl. Perfect feet.
- _____ 317. Choice (2 ea.) M & P—Fenton Stippled Rays 9" ICS dome footed Bowl.
- _____ 318. Aqua—(Contemp.) St. Clair Holly Creamer and a handled Sugar (maybe not) but looks great together.
- _____ 319. W—Dugan Puzzle Bon Bon w/ Floral & Wheat exterior. Nice & frosty.
- _____ 320. **P—N Fruits & Flowers footed Bon Bon. Electric Highlights!**
- _____ 321. B—(Contemp.) Smith Glass Windmill Bowl. Pretty.
- _____ 322. M—Fenton Scale Band 5" Bowl.
- _____ 323. PO—Dugan Puzzle Bon Bon w/ Floral & Wheat exterior.
- _____ 324. PO—Dugan Many Ribs JIP crimped edge Vase. Epoxy on lip.
- _____ 325. Choice (2 ea.) (Contemp.) Iridized Angels.
P Frosted—Boyd 5" kneeling & praying Angel.
Ice Seafoam G—Fenton 4" Angel Bust w/ long hair.
- _____ 326. Choice of 3 Little Pig Marigold Banks.
1—Large light colored,
1—Small dark colored
1—Small light colored w/ faint hint of gold trim.
Where is the big bad wolf when you need him?



Ayers Auction Service

P.O. Box 320
Tremont, IL 61568-0320



SPRING CARNIVAL GLASS BASH

SATURDAY, MARCH 20, 1999 9:30 AM
Preview on Friday 5:00 - 7:00 pm and Saturday 8:00 - 9:30 am

