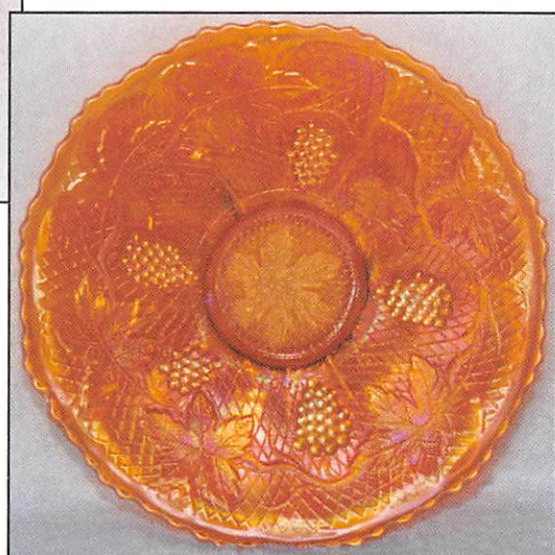
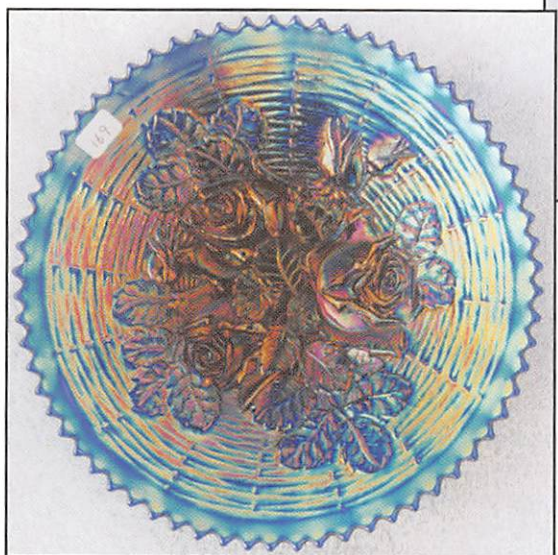
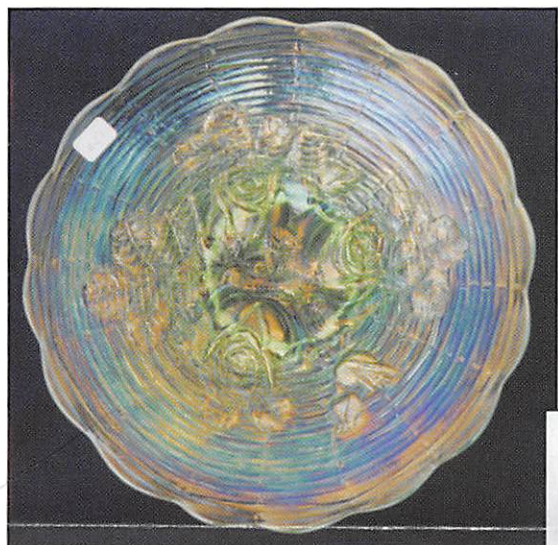


# Texas Carnival Glass Club Convention

# AUCTION

*Saturday, February 20, 1999 – 9:30 A.M.*



*Wyndham Hotel - Greenspoint  
Houston, Texas • For reservations call: (281) 875-2222*

**JIM and JAN SEECK**

**Seeck Auctions**

515-424-1116

# 20th Anniversary Celebration Convention

## \*Texas Carnival Glass Club\*

### AUCTION

Saturday, February 20th 1999 -- 9:30 am

Seeck Auctions is pleased to be selling the Donna and the late Bill Dawson Collection of Carnival Glass from the St. Louis, Missouri area. Donna and Bill had quite the eye for beautiful glass. Fantastic plates, water pitchers and more! The sale of their collection will make the 20th Anniversary of the Texas Club extra exciting.

Congratulations to the Texas Carnival Glass Club! 20 years! Time flies when you're having fun. The convention agenda looks really fun and educational. If you have never been down to Texas for their convention there is not a better time to go.

For information or questions about the convention please call: (281)351-2202

TERMS: Cash. Checks accepted with proper I.D.

NO BUYER'S PREMIUM.

8.25% Sales Tax will be charged. Please bring your sales tax number with you.

\*\*\*\*\*

### ABSENTEE BID POLICY

1. Write-in bids will be accepted by sending the numbers of the item(s) desired and the amount bid on each to:  
**Seeck Auctions, PO Box 377, Mason City, Iowa 50402.**
2. If known by Auction Company, bids may be done over the telephone. (515)424-1116.
3. There is a \$5 handling charge for each successful bid. Shipping and insurance charges are additional.
4. Bidders will be notified by phone if their bid(s) are successful. This call will be made 1 - 3 days after the auction.
5. Please have all bids in by Fri., Feb. 12th. All bids (by mail, phone or email) after this date may not be carried out.
6. Please place bids in the following increments: \$1 to \$300 - \$5 increments \$300 up - \$25 increments.
7. **If you do not receive an item that sold for less than your bid, assume we cancelled your bid because the piece of glass had below average color, manufacture problem, damage or was not listed correctly.**
8. To receive price lists send: \$20 -- for this auction and next 7 auctions  
\$5 -- for only this auction or individual auction (please specify)

Send to the above address. (please allow 2 - 3 weeks delivery for price lists)(Make checks payable to: Jan Seeck)

\*\*\*\*\*

You may now email us with your absentee bids! Our email address is: [seeckauction@willowtree.com](mailto:seeckauction@willowtree.com)

Continue to include the numbers of the item(s) you would like to bid on and amount bid on each, please include your telephone number. ALSO visit us at our website: <http://www.willowtree.com/~seeckauction>

\*\*\* Email Bids must be in by Friday, February 12th \*\*\*

- |  |   |
|--|---|
| ___ 1. Wreath of Roses rosebowl - marigold - minor heat check in collar  | ___ 13. Four Flowers ruffled sauce - peach opal - nice  |
| ___ 2. Single Flower Framed CRE handgrip dish - peach opal   | ___ 14. Imperial Grape wine bottle w/two wines - purple - pretty  |
| ___ 3. Imperial Grape ruffled sauce - green  | ___ 15. Imperial Grape wine bottle - marigold   |
| ___ 4. Luster Flute punch cup - purple   | ___ 16. <b>Forget Me Not tankard water pitcher - marigold - very scarce pitcher</b>                             |
| ___ 5. Luster Flute punch cup - marigold   | ___ 17. Forget Me Not tumbler - marigold  |
| ___ 6. Waffle Block punch cup - clambroth  | ___ 18. Wild Blackberry CRE round bowl - green - scarce shape, nice   |
| ___ 7. Pinecone IC shaped sauce - amethyst - silvery   | ___ 19. <b>Fenton's Grape &amp; Cable fruit bowl w/Persian Medallion interior - marigold - dark &amp; super</b> |
| ___ 8. Stretch candlesticks - purple   | ___ 20. Peacock & Grape ruffled bowl - green - irid. on back only   |
| ___ 9. Kings Crown wine glass - marigold   | ___ 21. <b>Poppy Show 9" plate - marigold - super pretty &amp; dark, very scarce</b>                            |
| ___ 10. <b>M'burg Peacock master berry bowl - marigold - unbelievable!!! The prettiest marigold M'burg piece I've seen, dark marigold w/radium pink irid. WOW!!!</b> | ___ 22. Strawberry bon bon - blue   |
| ___ 11. Scroll Embossed ruffled sauce w/file back - purple - super   | ___ 23. Wine & Roses cider pitcher - marigold - cracked   |
| ___ 12. Grape & Cable cracker jar - marigold - typical nicks on inside rim of base   |   |

- \_\_\_ 24. Two Flowers collar based ruffled sauce - amethyst - has no feet
- \_\_\_ 25. Poinsettia milk pitcher - purple - spectacular irid. extremely rare color w/electric irid., WOW!!!!
- \_\_\_ 26. Diamond Points 10 1/2" vase - green - nice
- \_\_\_ 27. Raindrops 3 in 1 edge dome ftd bowl - peach opal
- \_\_\_ 28. Dugan's Cherries ruffled sauce - purple - nice
- \_\_\_ 29. M'burg Primrose ruffled bowl - green - satin
- \_\_\_ 30. Apple Tree water pitcher - white - frosty w/pretty irid., very hard to find pitcher
- \_\_\_ 31. Apple Tree tumbler - white - scarce
- \_\_\_ 32. Apple Tree water pitcher - blue - very nice example of a scarce pitcher
- \_\_\_ 33. Apple Tree tumblers(2) - blue - choice
- \_\_\_ 34. Apple Tree water pitcher - marigold - super dark, super pretty
- \_\_\_ 35. Apple Tree tumbler - marigold - super dark
- \_\_\_ 36. Persian Medallion 9" plate - blue - very pretty & rare
- \_\_\_ 37. Scroll Embossed round sauce w/file back - purple - pretty
- \_\_\_ 38. M'burg Peacock at Urn master IC shaped bowl - amethyst - radium & super, has chip on base, rare
- \_\_\_ 39. Leaf & Beads rosebowl - marigold
- \_\_\_ 40. Grape & Cable 4 pc. table set - purple - minor nick on thumbprint of spooner, otherwise super set
- \_\_\_ 41. Grape & Cable 4 pc. table set - marigold - spooner is lighter then the rest but a nice set overall
- \_\_\_ 42. N's Dandelion tankard water pitcher - purple - a pretty & rare tankard
- \_\_\_ 43. N's Dandelion tumbler - purple
- \_\_\_ 44. N's Dandelion tankard water pitcher - marigold - very dark & pretty
- \_\_\_ 45. N's Dandelion tumbler - marigold
- \_\_\_ 46. Waterlily ftd ruffled sauce - red - cherry red w/red irid.
- \_\_\_ 47. Waterlily ftd ruffled sauce - aqua - very scarce color
- \_\_\_ 48. Waterlily ftd ruffled sauce - vaseline - scarce
- \_\_\_ 49. Waterlily ftd ruffled sauce - blue
- \_\_\_ 50. Waterlily ftd ruffled sauce - marigold
- \_\_\_ 51. Grape & Cable large ruffled compote - green - very rare in this color, nice
- \_\_\_ 52. Stippled rays 6" plate - marigold
- \_\_\_ 53. Grape Arbor tumbler - ice green - super pretty & extremely rare, WOW!!
- \_\_\_ 54. Peacock at the Fountain tumbler - white - minor mold ruffness in base
- \_\_\_ 55. Concave Diamond tumbler - vaseline - scarce color for these
- \_\_\_ 56. Brocaded Acorn ftd tumbler - blue - scarce tumbler, brocade is hot
- \_\_\_ 57. Wishbone ftd tri-cornered bowl - purple - scarce shaped, highly desirable, pretty
- \_\_\_ 58. Hobstar Band ftd water pitcher - marigold
- \_\_\_ 59. Hobstar Band non-ftd water pitcher - marigold
- \_\_\_ 60. Hobstar Band tumbler - marigold
- \_\_\_ 61. Persian Medallion 6" plate - blue - scarce
- \_\_\_ 62. Persian Medallion 6" plate - marigold
- \_\_\_ 63. Stippled Three Fruits 9" plate w/ribbed back - marigold - super dark & very pretty, a good example
- \_\_\_ 64. Stippled Three Fruits 9" plate w/ribbed back - purple - very pretty plate, one point manufactured flat
- \_\_\_ 65. Scotch Thistle CRE ruffled compote - amethyst - pretty!
- \_\_\_ 66. Fentonia water pitcher - marigold - very rare & nice
- \_\_\_ 67. Fentonia tumbler - marigold
- \_\_\_ 68. Hearts & Flowers ruffled bowl w/ribbed back - purple - lots of blue irid., fantastic!
- \_\_\_ 69. Grape & Cable 7" handgrip plate - green - scarce
- \_\_\_ 70. Perfection tumbler - amethyst - scarce & pretty
- \_\_\_ 71. Circle Scroll tumbler - marigold - very nice, scarce
- \_\_\_ 72. Dahlia tumbler - marigold - scarce
- \_\_\_ 73. White Oak tumbler - marigold - scarce
- \_\_\_ 74. Banded Grape & Cable large fruit bowl - blue - scarce color, a toughie
- \_\_\_ 75. Pearly Dots rosebowl - marigold - turned in sharply, only 2 1/2" high, 6 1/4" in diameter, very rare rosebowl
- \_\_\_ 76. M'burg Dolphins compote - green - an exceptional example of a rare piece, super pretty, WOW!!
- \_\_\_ 77. Heavy Grape chop plate - amber - very scarce, minor buffed chip on base
- \_\_\_ 78. Heavy Grape chop plate - green
- \_\_\_ 79. Heavy Grape chop plate - marigold
- \_\_\_ 80. Stork & Rushes water pitcher - blue - pretty, scarce, as nice as these get
- \_\_\_ 81. Stork & Rushes tumblers (2) - blue - nice, choice
- \_\_\_ 82. N's Peacock at Urn IC sauce - white - silvery
- \_\_\_ 83. N's Peacock at Urn IC sauce - marigold - pretty
- \_\_\_ 84. Inverted Thistle water pitcher - purple - super example of a very rare pitcher, nice detail
- \_\_\_ 85. Inverted Thistle tumbler - purple - absolutely super!
- \_\_\_ 86. Grape & Cable breakfast set - purple - nice set
- \_\_\_ 87. Persian Garden 6" plate - white - chips on base

- \_\_\_ 88. Fisherman's mug - marigold - scarce & nice
- \_\_\_ 89. Fisherman's mug - purple
- \_\_\_ 90. Peacocks 9" plate w/ribbed plate - green - very rare color & nice
- \_\_\_ 91. Peacocks 9" plate w/ribbed back - blue - very pretty, always desirable
- \_\_\_ 92. M'burg Cosmos IC shaped sauce - green
- \_\_\_ 93. S-Repeat tumbler - marigold - very pretty, extremely rare a highly desirable tumbler
- \_\_\_ 94. Checkerboard tumbler - amethyst - scarce tumbler
- \_\_\_ 95. M'burg Feather & Heart tumbler - marigold
- \_\_\_ 96. God & Home tumbler - blue - super pretty & scarce
- \_\_\_ 97. Bouquet water pitcher - blue - super pretty! as nice as you can imagine
- \_\_\_ 98. Bouquet tumbler - blue
- \_\_\_ 99. Daisy & Drape turned in vase - white - scarce
- \_\_\_ 100. Ripple 5 1/2" miniature vases (2) - marigold - choice
- \_\_\_ 101. Leaf Chain 9" plate - amethyst - extremely rare color for this plate, have never sold another, super pretty, another WOW!
- \_\_\_ 102. Lined Lattice 10" vase - white
- \_\_\_ 103. Memphis punch cup - lime green
- \_\_\_ 104. Memphis punch cup - green
- \_\_\_ 105. Peacock at the Fountain water pitcher - ice blue - extremely rare piece & pretty, another top pitcher
- \_\_\_ 106. Peacock at the Fountain tumbler - ice blue
- \_\_\_ 107. Peacock & Dahlia 7" IC shaped bowl - marigold
- \_\_\_ 108. Orange Tree 9" plate - marigold - dark & pretty
- \_\_\_ 109. Hearts & Flowers ruffled compote - lavender - minor pinpoint on base but super pretty, very scarce color
- \_\_\_ 110. Hearts & Flowers ruffled compote - marigold - pretty
- \_\_\_ 111. Hearts & Flowers ruffled compote - white - also pretty
- \_\_\_ 112. Heart & Vine ruffled bowl - green
- \_\_\_ 113. Grape & Cable water pitcher - green - scarce color & always desirable
- \_\_\_ 114. Grape & Cable tumbler - green - fantastic
- \_\_\_ 115. Grape & Cable water pitcher - purple - super pretty, hard to find crack in base
- \_\_\_ 116. Grape & Cable tumbler - purple - pretty
- \_\_\_ 117. Grape & Cable 7 pc. water set - marigold - nice matching set
- \_\_\_ 118. Holly ruffled bowl - amber red - lacks irid. in center, pinpoint on edge
- \_\_\_ 119. Holly ruffled bowl - odd green - most would call this emerald, fantastic irid.
- \_\_\_ 120. Holly ruffled bowl - white - pretty
- \_\_\_ 121. Grape & Cable sweatmeat - purple
- \_\_\_ 122. Double Star water pitcher - marigold - extremely rare color for this pitcher, pretty, a nice piece!
- \_\_\_ 123. Double Star tumbler - marigold
- \_\_\_ 124. Sailboats ruffled sauce - green
- \_\_\_ 125. Sailboats ruffled sauce - amethyst - pretty
- \_\_\_ 126. Sailboats ruffled sauce - blue - pretty
- \_\_\_ 127. Flute & Cane small size milk pitcher - marigold
- \_\_\_ 128. Dragon & Strawberry ftd ruffled bowl - green - nice bowl, very rare & desirable
- \_\_\_ 129. Imperial Grape 9" plate - green -
- \_\_\_ 130. M'burg Gay Nineties tumbler - amethyst - radium & rare, a tough one to find
- \_\_\_ 131. M'burg Multi-Fruits & Flowers tumbler - amethyst - spectacular radium irid., does have chip on base
- \_\_\_ 132. Cosmos & Cane tumbler - honey amber - pretty, scarce
- \_\_\_ 133. Cosmos & Cane tumbler - white - also very scarce & pretty
- \_\_\_ 134. Wide Panel miniature ftd salt dip - marigold - has Imperial Cross mark on bottom, scarce miniature
- \_\_\_ 135. Oriental Poppy tankard water pitcher - white - extremely rare, frosty & has super irid.
- \_\_\_ 136. Oriental Poppy tumbler - white - pretty w/super irid.
- \_\_\_ 137. Oriental Poppy tankard water pitcher - purple - very scarce & desirable, nice
- \_\_\_ 138. Oriental Poppy tumbler - purple - super
- \_\_\_ 139. Oriental Poppy tankard water pitcher - marigold - dark & super, scarce
- \_\_\_ 140. Oriental Poppy tumbler - marigold
- \_\_\_ 141. Many Fruits punch bowl top - purple - pretty, very scarce
- \_\_\_ 142. Leaf Chain ruffled bowl - amethyst
- \_\_\_ 143. Drapery 8" vase - white - scarce
- \_\_\_ 144. Dugan's Cherries 10" ruffled bowl - purple - scarce
- \_\_\_ 145. Illinois Soldiers & Sailors 7" plate - marigold - very pretty & highly desirable
- \_\_\_ 146. Two Fruits divided bon bon - marigold
- \_\_\_ 147. N's Bushel Basket - lavender - nice, scarce color
- \_\_\_ 148. Grape & Gothic Arches water pitcher - green - very scarce color & pretty
- \_\_\_ 149. Grape & Gothic arches tumbler - green
- \_\_\_ 150. Garden Path Variant 6" plate - white - scarce piece, a tough one to get
- \_\_\_ 151. Grape & Cable small size punch bowl & base - green - bowl has crack
- \_\_\_ 152. Pony ruffled bowl - marigold
- \_\_\_ 153. Arched Flute toothpick - lavender, rare & highly desirable
- \_\_\_ 154. M'burg Blackberry Wreath 8" ruffled bowl

- amethyst - radium

- \_\_\_ 155. **Stippled Grape & Cable 9" plate - green - very rare plate, tough to find & nice**
- \_\_\_ 156. Horse Medallion rosebowl - marigold
- \_\_\_ 157. Ripple 15" vase - amber - has 3 3/4" base, nice
- \_\_\_ 158. **Lattice & Grape tankard water pitcher - white - has crack by handle, hard to find in white**
- \_\_\_ 159. Lattice & Grape tumbler - white - scarce
- \_\_\_ 160. **Lattice & Grape tankard water pitcher - marigold**
- \_\_\_ 161. **Holly 9" plate - white - super pretty irid., nice example**
- \_\_\_ 162. **Beaded Acanthus milk pitcher - marigold - dark & nice, a good one!**
- \_\_\_ 163. Grape & Cable master IC bowl - green - pretty example, quite rare in this color
- \_\_\_ 164. Diving Dolphins ftd ruffled deep bowl - marigold - pretty
- \_\_\_ 165. **Starflower water pitcher - blue - epoxy on collar base, rare pitcher, pretty**
- \_\_\_ 166. Scroll Embossed 4" round bowl w/4 handles - marigold
- \_\_\_ 167. Dandelion mug - aqua opal - pretty, cracked
- \_\_\_ 168. Dandelion mug - custard - not carnival, small nick on base
- \_\_\_ 169. **Rose Show Variant 9" plate - blue - super irid.! as pretty as you can get, extremely rare & desirable**
- \_\_\_ 170. Dugan's Cherries ruffled sauce - peach opal - nice
- \_\_\_ 171. **Orange Tree & Scroll tankard water pitcher - blue - super pretty pitcher, extremely rare, shows pattern well!**
- \_\_\_ 172. Orange Tree & Scroll tumbler - blue - pinpoint on base
- \_\_\_ 173. **Field Thistle water pitcher - marigold**
- \_\_\_ 174. Field Thistle tumbler - marigold
- \_\_\_ 175. **Good Luck ruffled bowl w/ribbed back - marigold - dark & super, has lots of pink irid.**
- \_\_\_ 176. **Fashion tumbler - purple - extremely rare & pretty**
- \_\_\_ 177. **Chatelaine tumbler - purple - super & scarce!**
- \_\_\_ 178. Octagon tumbler - purple - very scarce & nice
- \_\_\_ 179. M'burg Marilyn tumbler - amethyst - radium & pretty
- \_\_\_ 180. Zippered Heart giant rosebowl - green - extremely rare, but has a crack in stem
- \_\_\_ 181. Singing Birds mug - marigold - dark & super
- \_\_\_ 182. **Imperial Grape water pitcher - aqua - super pretty!! super irid!! rare color**
- \_\_\_ 183. Imperial Grape water pitcher - marigold - dark & super, as pretty as I've seen
- \_\_\_ 184. Beaded Cable rosebowl - marigold - dark & pretty
- \_\_\_ 185. **Greek Key 9" plate w/ribbed back - marigold - spectacular irid. unfortunately has large chip on base, buy this one for beauty**
- \_\_\_ 186. M'burg Sunflower pintray - green - cracked
- \_\_\_ 187. **M'burg Trout & Fly IC shaped bowl - amethyst - satin, very pretty example of a rare bowl**
- \_\_\_ 188. **M'burg Trout & Fly IC shaped bowl - green - satin, nice & scarce**
- \_\_\_ 189. Grapevine Lattice ruffled sauce - white
- \_\_\_ 190. Wishbone & Spades 6" plate - amethyst - silvery, scarce
- \_\_\_ 191. **Grape & Cable fruit bowl - green - very scarce color & nice**
- \_\_\_ 192. **Orange Tree Orchard water pitcher - white - very rare pitcher**
- \_\_\_ 193. Orange Tree Orchard tumbler - white
- \_\_\_ 194. **Orange Tree Orchard water pitcher - blue - also a very rare pitcher**
- \_\_\_ 195. Orange Tree tumbler - blue
- \_\_\_ 196. **Cherry Chain 6" plate - blue - very scarce & nice**
- \_\_\_ 197. Fruits & Flowers bon bon - blue - pretty
- \_\_\_ 198. Good Luck PCE bowl w/ribbed back - blue - very nice
- \_\_\_ 199. Good luck PCE bowl - marigold - nice
- \_\_\_ 200. Diamond Lace water pitcher - purple - very pretty, crack in base
- \_\_\_ 201. Wishbone ftd ruffled bowl - marigold - nice
- \_\_\_ 202. **Grape & Cable cologne bottles (2) - green - scarce in this color, nice, choice**
- \_\_\_ 203. Grape & Cable powder jar - green - very pretty
- \_\_\_ 204. Grape & Cable powder jar - purple - minor nicks on lid
- \_\_\_ 205. Hobstar & Fruit ruffled sauce - peach opal
- \_\_\_ 206. **Enameled Columbine water pitcher - green - scarce color & pretty**
- \_\_\_ 207. N's Thin Rib 6 1/2" squatty vase - white - pretty
- \_\_\_ 208. **Raspberry milk pitcher - purple - very pretty example for these**
- \_\_\_ 209. Nippon PCE bowl - ice blue - scarce & pretty
- \_\_\_ 210. Orange Tree ftd creamer - white - feet look pretty good
- \_\_\_ 211. Memphis round shaped fruit bowl & base - crystal - not carnival, this has to be kinda rare, neat
- \_\_\_ 212. Memphis butterdish - crystal - not carnival, also scarce
- \_\_\_ 213. **Ten Mums tankard water pitcher - blue - extremely rare & nice**
- \_\_\_ 214. Ten Mums tumblers (3) - blue - choice
- \_\_\_ 215. M'burg Peacock deep berry sauce - green - radium & pretty, tough to find, minor nicks on edge

- \_\_\_ 216. **Dragon & Lotus IC shaped bowl - red - cherry red color & nice, very desirable piece**
- \_\_\_ 217. Horse Medallion 7" ruffled bowl - amethyst - silvery
- \_\_\_ 218. Strawberry 9" plate w/BW back - purple - super stretchy irid
- \_\_\_ 219. **Blackberry Block tankard water pitcher - marigold - very scarce pitcher**
- \_\_\_ 220. Blackberry Block tumbler - marigold
- \_\_\_ 221. **Rose Show 9" plate - ice green - super pretty & extremely rare, a great example**
- \_\_\_ 222. Grape Delight ftd rosebowl - purple - pretty
- \_\_\_ 223. **M'burg Hanging Cherries large IC shaped bowl - marigold - satin & nice**
- \_\_\_ 224. Imperial Grape 6" plate - marigold - pretty
- \_\_\_ 225. **Ten Mums CRE deep bowl - green - very scarce & nice**
- \_\_\_ 226. Butterfly & Berry water pitcher - green - very rare color, pretty, has crack
- \_\_\_ 227. Butterfly & Berry tumbler - green
- \_\_\_ 228. M'burg Cherries round sauce - marigold - radium & pretty
- \_\_\_ 229. M'burg Holly Sprig Variant 8" IC shaped bowl - marigold - radium & fantastic
- \_\_\_ 230. **Oriental Poppy tumbler - ice green - very rare & pretty**
- \_\_\_ 231. **Oriental Poppy tumbler - ice blue - pretty**
- \_\_\_ 232. **Oriental Poppy tumbler - blue - very rare color & nice**
- \_\_\_ 233. **Inverted Strawberry tumbler - amethyst - pretty**
- \_\_\_ 234. Iris ruffled compote - green
- \_\_\_ 235. **Quill water pitcher - marigold - very scarce & desirable**
- \_\_\_ 236. Quill tumbler - marigold - nice
- \_\_\_ 237. Grape & Cable 9" plate w/BW back - amethyst
- \_\_\_ 238. **M'burg Peacock 6" plate - amethyst - silvery but very rare**
- \_\_\_ 239. Shriners 1911 Pittsburgh PA champagne - clear
- \_\_\_ 240. Lions ruffled bowl - marigold - nice
- \_\_\_ 241. **Apple Blossom Twigs 9" plate w/smooth edge - purple - very rare plate & nice**
- \_\_\_ 242. Persian Medallion bon bon - amberina - unusual
- \_\_\_ 243. **Grape & Cable candle lamp - green - extremely rare & nice**
- \_\_\_ 244. Blackberry Open Edge basket - green - pretty
- \_\_\_ 245. **Jeweled Heart water pitcher - marigold - dark & super, very, very rare!**
- \_\_\_ 246. Jeweled Heart tumbler - marigold
- \_\_\_ 247. Grape & Cable PCE bowl w/BW back - green - nice
- \_\_\_ 248. **Stippled Three Fruits spt ftd ruffled bowl - aqua opal - pastel & super, a beauty**
- \_\_\_ 249. Pulled Loop 9" vase - peach opal
- \_\_\_ 250. **Butterfly & Fern water pitcher - green - very pretty**
- \_\_\_ 251. Ski Star large ruffled bowl - peach opal
- \_\_\_ 252. **Greek Key ruffled bowl - marigold - super, pumpkin lookin**
- \_\_\_ 253. **Concave Diamonds tankard water pitcher w/lid - celest blue - pretty & desirable**
- \_\_\_ 254. Concave Diamonds tumbler - celest blue
- \_\_\_ 255. Hanson Town Pumps (2) - green is signed, purple is not - not old, choice
- \_\_\_ 256. Grapevine Lattice tankard water pitcher - marigold
- \_\_\_ 257. **Inverted Strawberry butterdish - marigold - pretty & nice**
- \_\_\_ 258. Caralina Dogwood low round bowl - peach opal - some would call a plate
- \_\_\_ 259. M'burg Grape Wreath tri-cornered sauce - marigold - radium, scarce shape
- \_\_\_ 260. **Good Luck 9" plate w/BW back - purple - very pretty example, a nice plate**
- \_\_\_ 261. Kittens 2 sides up dish - marigold - as good as these get
- \_\_\_ 262. **M'burg Nesting Swan ruffled bowl - amethyst - satin & super!**
- \_\_\_ 263. Feathered Serpent tri-cornered sauce - amethyst
- \_\_\_ 264. **Blueberry water pitcher - marigold - dark from top to bottom w/pretty irid., a great shape**
- \_\_\_ 265. Blueberry tumbler - marigold
- \_\_\_ 266. Dragon & Lotus ruffled bowl - amethyst - nice
- \_\_\_ 267. **Central Shoe Store adv. ruffled bowl - amethyst - pretty for these, rare**
- \_\_\_ 268. Acorn Burrs punch cup - green
- \_\_\_ 269. Lily of the Valley tumbler - blue - a bit silvery but very rare
- \_\_\_ 270. Flute #2 tumbler - purple - scarce & nice
- \_\_\_ 271. Strawberry Scroll tumbler - marigold - scarce & nice
- \_\_\_ 272. Cut Cosmos tumbler - marigold - super nice
- \_\_\_ 273. **Singing Birds water pitcher - purple - a beauty**
- \_\_\_ 274. Singing Birds tumbler - purple
- \_\_\_ 275. Grape & Cable master punch bowl & base - marigold - very, very pretty, something fell on it & broke a 4" section off edge, still have the piece
- \_\_\_ 276. Grape & Cable punch cup - white
- \_\_\_ 277. Grape & Cable punch cup - purple
- \_\_\_ 278. Grape & Cable punch cup - marigold
- \_\_\_ 279. **M'burg Trout & Fly 3 in 1 edge bowl - marigold - satin & nice very scarce**
- \_\_\_ 280. Sailboats round sauce - aqua - pretty
- \_\_\_ 281. **Rising Sun ftd water pitcher - marigold**

- very scarce & nice
- \_\_\_ 282. Rising Sun tumbler - marigold
- \_\_\_ 283. **M'burg Hanging Cherries table set minus the spooner - amethyst - radium & very pretty, we will sell these choice**
- \_\_\_ 284. Petal & Fan ruffled sauce - peach opal
- \_\_\_ 285. **Three Row Open Edge IC shaped bowl - ice blue - pretty & very rare, nice piece**
- \_\_\_ 286. Palm Beach w/Gooseberry interior round bowl - honey amber - pretty
- \_\_\_ 287. **Grape Arbor tankard water pitcher - ice blue - dark w/super irid! very rare**
- \_\_\_ 288. Grape Arbor tumbler - ice blue - chips on base
- \_\_\_ 289. **Grape Arbor tankard water pitcher - purple - very rare & pretty**
- \_\_\_ 290. Grape Arbor tumblers (2) - purple - choice
- \_\_\_ 291. **Grape Arbor tankard water pitcher - marigold - dark & pretty, a nice one!**
- \_\_\_ 292. Grape Arbor tumbler - marigold
- \_\_\_ 293. Stippled Rays ruffled sauce - red - manufacture separation on seam of base, no harm, pretty
- \_\_\_ 294. M'burg Multi Fruits & Flowers punch cup - green
- \_\_\_ 295. **Heavy Iris tankard water pitcher - marigold - a nice one**
- \_\_\_ 296. Heavy Iris tumbler - marigold
- \_\_\_ 297. Fine Rib 10" vase - amethyst - scarce color
- \_\_\_ 298. M'burg Little Stars 7" ruffled bowl - amethyst - satin & pretty
- \_\_\_ 299. Ski Star 3 in 1 edge dome ftd bowl - peach opal - scarce shape & nice
- \_\_\_ 300. **Raspberry water pitcher - purple - pretty example**
- \_\_\_ 301. Raspberry tumbler - purple - pretty
- \_\_\_ 302. Grape & Cable hatpin holder - purple - nice
- \_\_\_ 303. Acorn Burrs punch bowl base - white - if you need it, it's a rare one
- \_\_\_ 304. Milady tankard water pitcher - marigold - very rare but cracked
- \_\_\_ 305. Milady tumbler - marigold - dark & super
- \_\_\_ 306. Little Barrel - green - minor roughness around top, not unusual
- \_\_\_ 307. M'burg Strawberry Wreath Variant - green - radium & nice
- \_\_\_ 308. Orange Tree ftd water pitcher - marigold - feet have been polished
- \_\_\_ 309. Grape & Cable cologne bottle stopper - marigold
- \_\_\_ 310. Lacy Dew Drop compote - marigold on milkglass
- \_\_\_ 311. **Rustic 19" funeral vase - green - very rare color & beautiful**
- \_\_\_ 312. Ski Star ruffled sauce - purple
- \_\_\_ 313. Wild Blackberry ruffled bowl - green
- \_\_\_ 314. M'burg Holly Whirl ruffled bowl - amethyst - satin & pretty, minor nick on base
- \_\_\_ 315. Orange Tree standard size mug - amethyst - chip on base
- \_\_\_ 316. **M'burg Hanging Cherries water pitcher - green - radium & fantastic! a beautiful pitcher**
- \_\_\_ 317. **M'burg Hanging Cherries water pitcher - marigold - dark & fantastic, radium**
- \_\_\_ 318. M'burg Hanging Cherries tumbler - marigold - very scarce
- \_\_\_ 319. Swirl water pitcher - marigold
- \_\_\_ 320. Soda Gold 6 pc. water set - marigold
- \_\_\_ 321. Four Seventy Four milk pitcher - green - scarce & desirable
- \_\_\_ 322. **Concord 9" plate - amethyst - fantastic irid. on this very rare plate, WOW!**
- \_\_\_ 323. **Concord 9" plate - marigold - dark & fantastic, this is the best one I've seen in marigold a top plate**
- \_\_\_ 324. Acorn Burrs sugar lid - green
- \_\_\_ 325. Wide Panel cruet - marigold - 1 of 300 signed Levay
- \_\_\_ 326. Small ftd creamer - blue - looks like Double Loop, but is not
- \_\_\_ 327. Vintage epergne base - marigold
- \_\_\_ 328. Butterfly & Berry ftd sauce - blue - chip on base
- \_\_\_ 329. Little Fishes ftd ruffled sauce - marigold
- \_\_\_ 330. Panther ftd ruffled sauce - marigold
- \_\_\_ 331. HOACGA table favors 1983, 1987 - white & amber - choice
- \_\_\_ 332. Orange Peel punch cup - marigold
- \_\_\_ 333. PNWCGA 1982 Fisherman's mug - peach opal
- \_\_\_ 334. Joe St. Clair liberty bell - green
- \_\_\_ 335. Hatpins (6) - choice
- \_\_\_ 336. ICGA 1979 paperweight - purple

# Seeck Auctions

P.O. Box 377  
Mason City, Iowa 50402

First Class  
U.S. Postage  
**PAID**  
Mason City, IA  
Permit No. 448

