



BURNS
AUCTION SERVICE

Tampa Bay Carnival Glass Club Jamboree Auction

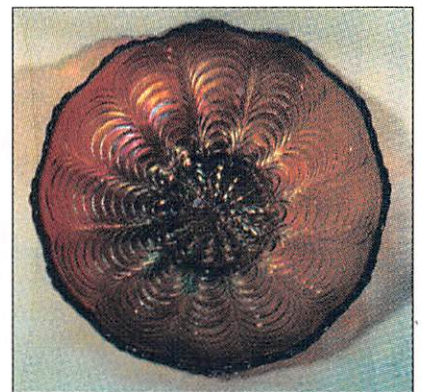
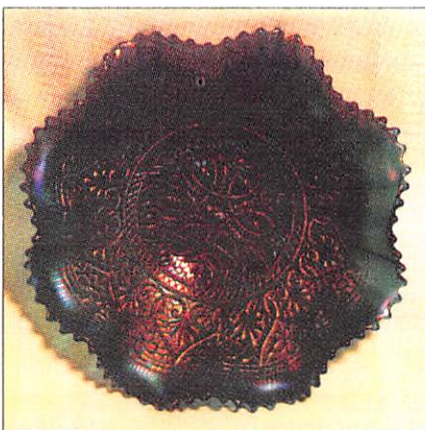
**4:00 p.m., Friday,
February 12, 1999**

preview prior

at the

**Hampton Inn-Clearwater Central
21030 U.S. Rte. 19 North
Clearwater, FL 33765**

(727) 797-8173



For the second game of our Florida Double Header, we are pleased to once again present the auction for the Tampa Bay Carnival Glass Club's Jamboree. The bulk of the glass we'll be auctioning is from the Carol Cressman collection, of Ontario, Canada. There is a nice assortment of all kinds, with a sprinkling of rareities which will, I believe, nicely wrap up two weeks of fun in the Sunshine State.

The Hampton Inn - Clearwater Central will host the event. The motel is located right on U.S. 19 North in the Clearwater area. For reservations or motel information call them direct at (727) 797-8173.

The Tampa Bay Club will be our hosts for the weekend. For further information on the convention call Naomi Calkins at (747) 725-4145.

Mail, phone Email & Fax bids due by Monday, February 8, 1999.

Burns Auction Service

Tom Burns
P.O. Box 608
Bath, New York 14810
(607) 776-7942

Bill Richards
44 Water St., Poland, OH 44514
(330) 757-2001
FAX (330) 757-4917

Bill Richards, III
2253 Country Lane
Poland, OH 44514
(330) 755-2620

Bill Richards, Auctioneer FL License #AU0001621

Maid Bids honored under the following conditions:

1. No deposit required. Bidders will take full responsibility to honor any and all bids we execute for them. Payment in full plus postage and handling required after notification and before we ship any item to them.
2. Items are bid on in perfect condition with average or above average iridescence OR as listed in the brochures. Bids will not be carried out when damage on an item has been found during the auction. **PEOPLE PRESENT AT AUCTION ARE RESPONSIBLE FOR FINDING ANY PINHEADS, WEAR, SPOTTINESS, MANUFACTURER'S DEFECTS OR ANY OTHER MINOR FLAWS, ETC.**
3. Successful bidders will be notified by collect call from the auctioneer (**so be sure to include phone number**).
4. Phone inquiries about the glass or any other questions are welcome.
5. If you have some other person at the auction bidding for you, they must pay for the item before taking it.
6. Any terms or conditions given the day of the auction will supersede any previously published information.
7. Mail, Email, FAX and Phone bids due by Monday, February 8, 1999.

- | | |
|---------------------------------------------------------------------------------------------------------------------------------------------------------------------------------------------------------------------------------------------------------------------------------------------------------------------------------------------------------------------------------------------------------------------------------------------------------------------------------------------------------------------------------------------------------------------------------------------------------------------------------------------------------------------------------------------------------------------------------------------------------------------------------------------------------------------------------------------------------------------------------------------------------------------------------------------------------------------------------------------------------------------------------------------------------------------------------------------------------------------------------------------------------------------------------------------------------------------------------------------------------------------------------------------------------------------------------------------------------------------------------------------------------------------------------------------------------------------------------------------------------------------------------------------------------------------------------------------------------------------------------------------------------------------------------------------------------------------------------------------------------------------------------|-------------------------------------------------------------------------------------------------------------------------------------------------------------------------------------------------------------------------------------------------------------------------------------------------------------------------------------------------------------------------------------------------------------------------------------------------------------------------------------------------------------------------------------------------------------------------------------------------------------------------------------------------------------------------------------------------------------------------------------------------------------------------------------------------------------------------------------------------------------------------------------------------------------------------------------------------------------------------------------------------------------------------------------------------------------------------------------------------------------------------------------------------------------------------------------------------------------------------------------------------------------------------------------------------------------------------------------------------------------------------------------------------------------------------------------------------------------------------------------------------------------------------------------------------------------------------------------------------------------------------------|
| <p>___ 1. Depression Era Unlisted Fine Cut Juice Glass - Lt. Mari. (unusual)</p> <p>___ 2. Depression Era Unlisted Block and Triangles Tumbler - Pink / Irid. (different)</p> <p>___ 3. (?) McKee Geometric Cut Patterned Tumbler with Marigold edge (souvenir of Columbus, Ohio)</p> <p>___ 4. (?) Flared ftd. Vase with Sawtooth Edge Base - Mari. (scarce)</p> <p>___ 5. U.S. GLASS ESTATE PERFUME BOTTLE AND STOPPER - SMOKE FLASH (SCARCE, DESIRABLE; NICE FLASHING)</p> <p>___ 6. European Enameled Decorated Floral Designed Sugar Shaker - Mari. (very scarce and attractive - unusual with nice decoration)</p> <p>___ 7. Unlisted Scroll Patterned Cologne Bottle and Stopper - Mari. / Clear (unusual item)</p> <p>___ 8. Novelty Scroll Pin Tray - Lt. Mari. (scarce novelty)</p> <p>___ 9. 7" x 7" Square (Maker ?) Daisy and Button Square Plate - Mari. (unusual; not sure of maker)</p> <p>___ 10. N HEARTS AND FLOWERS 8 RUFFLED BOWL WITH RIBBED EXT. - RENNINGER BLUE (ABSOLUTELY BEAUTIFUL EXAMPLE OF THIS PATTERN IN A RARE PATTERN; REALLY NICE)</p> <p>___ 11. N HEARTS AND FLOWERS 8 RUFFLED BOWL WITH RIBBED EXT. AND NARROW BASE - BLUE (RARE AND DESIRABLE; HAS NICE SATINY MULTI COLORED IRID.)</p> <p>___ 12. N Hearts and Flowers 8 Ruffled Bowl with Ribbed Ext. - White (very scarce; nice and frosty)</p> <p>___ 13. N HEARTS AND FLOWERS STEMMED RUFFLED COMPOTE WITH RIBBED EXT. - LT. ICE BLUE (SCARCE ITEM; HAS LIGHT BASE GLASS COLOR)</p> <p>___ 14. N Hearts and Flowers Stemmed Ruffled Compote with Plain Ext. - White (scarce; nice average color and irid.)</p> <p>___ 15. N Hearts and Flowers Stemmed Ruffled Compote with Ribbed Ext. - Aqua Opal. (rare and desirable; has some roughness around base)</p> | <p>___ 16. N Corn Vase with Plain Base - White (scarce; nice average color and irid.)</p> <p>___ 17. N Daisy and Drape ftd. turned in Vase - White (scarce; nice frosty color and irid.)</p> <p>___ 18. N Daisy and Plume Stemmed Ruffled Compote with Fern Interior - Purp. (scarce color)</p> <p>___ 19. N Blackberry and Rays Stemmed 6 Ruffled Compote - Mari. (scarce pattern)</p> <p>___ 20. 10 3/4" N TREE TRUNK STANDARD SWUNG VASE - AQUA OPAL. (A SUPER EXAMPLE; LOTS OF PASTEL; SO VERY TOUGH TO FIND)</p> <p>___ 21. 10 1/2" N Tree Trunk Standard Swung Vase - Green (nice color and irid.)</p> <p>___ 22. 9 3/4" N Tree Trunk Standard Swung Vase - Dk. Mari. (very nice example)</p> <p>___ 23. 8 3/4" N DRAPERY VARIANT SWUNG VASE - PURP. (VERY SCARCE AND DESIRABLE PATTERN)</p> <p>___ 24. 8 1/2" N Drapery Swung Vase - Ice Green (smoothed toe on one foot)</p> <p>___ 25. 13" TALL X 7" WIDE X 5 1/8" BASE N TREE TRUNK ELEPHANT FOOT FUNERAL VASE - PURP. (VERY RARE AND VERY DESIRABLE; HAS A SATINY FINISH)</p> <p>___ 26. 11" TALL N DIAMOND POINT STANDARD SWUNG VASE - SAPPHIRE / MARI. (VERY RARE BASE COLOR; A TOUGH COLOR VARIATION)</p> <p>___ 27. N Poppy Oval Ruffled Relish Tray with Ribbed Ext. - Blue (scarce; nice color and irid.)</p> <p>___ 28. N Raspberry Handled Water Pitcher - Dk. Mari. (desirable; nice color and irid.)</p> <p>___ 29. N Raspberry Tumbler - Dk. Mari. (nice color and irid.)</p> <p>___ 30. N PEACOCKS RUFFLED BOWL WITH RIBBED EXT. - AQUA OPAL. (RARE AND VERY DESIRABLE; HAS REALLY NICE COLOR, OPAL. AND IRID.)</p> |
|---------------------------------------------------------------------------------------------------------------------------------------------------------------------------------------------------------------------------------------------------------------------------------------------------------------------------------------------------------------------------------------------------------------------------------------------------------------------------------------------------------------------------------------------------------------------------------------------------------------------------------------------------------------------------------------------------------------------------------------------------------------------------------------------------------------------------------------------------------------------------------------------------------------------------------------------------------------------------------------------------------------------------------------------------------------------------------------------------------------------------------------------------------------------------------------------------------------------------------------------------------------------------------------------------------------------------------------------------------------------------------------------------------------------------------------------------------------------------------------------------------------------------------------------------------------------------------------------------------------------------------------------------------------------------------------------------------------------------------------------------------------------------------|-------------------------------------------------------------------------------------------------------------------------------------------------------------------------------------------------------------------------------------------------------------------------------------------------------------------------------------------------------------------------------------------------------------------------------------------------------------------------------------------------------------------------------------------------------------------------------------------------------------------------------------------------------------------------------------------------------------------------------------------------------------------------------------------------------------------------------------------------------------------------------------------------------------------------------------------------------------------------------------------------------------------------------------------------------------------------------------------------------------------------------------------------------------------------------------------------------------------------------------------------------------------------------------------------------------------------------------------------------------------------------------------------------------------------------------------------------------------------------------------------------------------------------------------------------------------------------------------------------------------------------|

- ___ 31. N PEACOCKS PLATE WITH RIBBED EXT. - ICE BLUE (RARE AND DESIRABLE COLOR WITH NICE IRID. - HAS BUBBLE NEAR EDGE)
- ___ 32. N PEACOCKS PLATE WITH RIBBED EXT. - ICE GREEN (VERY NICE EXAMPLE; NICE COLOR AND IRID.)
- ___ 33. N PEACOCKS STIPPLED BOWL WITH PIE CRUST EDGE AND RIBBED EXT. WITH NARROW BASE - RENNINGER BLUE (A VERY TOUGH ITEM TO FIND IN THIS COLOR; IRID. IS SILVERY / GOLD)
- ___ 34. N PEACOCK AT THE URN ALL OVER STIPPLED LG. ICE CREAM BOWL - HONEY AMBER (ACTUALLY QUITE A RARE BASE COLOR FOR THIS ITEM; NICE AVERAGE IRID.)
- ___ 35. N PEACOCK AT THE FOUNTAIN 7 PC. BERRY SET - ICE BLUE (A RARE AND VERY DESIRABLE SET TO FIND COMPLETE; SUPER SET)
- ___ 36. N DRAPERY RUFFLED ROSE BOWL - AQUA OPAL. (RARE AND DESIRABLE; NICE OPAL. AND IRID.)
- ___ 37. N Drapery Ruffled Rose Bowl with Plain Edge - Purp. (quite a scarce variation; nice irid.)
- ___ 38. N Drapery Tri Cornered Candy Dish - Ice Blue (scarce; nice base color and irid.)
- ___ 39. N Butterfly 2 Handled Bon Bon with Plain Ext. - Green (nice color and irid.)
- ___ 40. N POPPY SHOW FLARED PLATE - BLUE (RARE AND DESIRABLE; HAS ELEC. BLUE HIGHLIGHTS; CINDER)
- ___ 41. N POPPY SHOW FLARED PLATE - WHITE (VERY SCARCE AND UNDER PRICED - ACTUALLY QUITE A NICE EXAMPLE)
- ___ 42. N ROSE SHOW FLAT PLATE - WHITE (RARE AND DESIRABLE; REALLY NICE COLOR AND IRID.)
- ___ 43. N ROSE SHOW RUFFLED BOWL - MARI. (VERY SCARCE AND DESIRABLE; NICE COLOR AND IRID.)
- ___ 44. N Wild Rose ftd. Flared Candy Dish - Dk. Purp. (dark base glass color)
- ___ 45. N SPRINGTIME 6 PC. WATER SET - DK. MARI. (RARE AND VERY DESIRABLE SET; SUPER COLOR AND IRID. - A NICE SET)
- ___ 46. N Leaf and Beads ftd. Deep Flared Plate - Mari. (scarce shape; has a shiny finish)
- ___ 47. N Leaf and Beads ftd. Rose Bowl - Dk. Mari. (nice dark color)
- ___ 48. N Fine Cut and Roses ftd. Ruffled Candy Dish with Fancy Int. - Dk. Mari. (scarce item; has sliver off one foot)
- ___ 49. N Fine Cut and Roses ftd. Ruffled Candy Dish with Fancy Int. - White (scarce; nice irid.)
- ___ 50. N Fine Cut and Roses ftd. Rose Bowl with Fancy Int. - Dk. Ice Blue (very scarce and very desirable; really nice base color)
- ___ 51. N Fine Cut and Roses ftd. Rose Bowl with Fancy Int. - White (very scarce and desirable; nice color and irid.)
- ___ 52. N DANDELION HANDLED MUG - AQUA OPAL. (ALWAYS A POPULAR ITEM; NICE OPAL. AND IRID.)
- ___ 53. N Raspberry Handled Milk Pitcher - Green (very scarce item; has a nice mari. overlay)
- ___ 54. N Raspberry Handled Milk Pitcher - Purp. (scarce ;and desirable; nice color and irid.)
- ___ 55. N ORIENTAL POPPY TANKARD WATER PITCHER WITH RIBBED EXT. - PURP. (RARE AND DESIRABLE; GREAT COLOR AND IRID. - NICE)
- ___ 56. N ACORN BURR HANDLED WATER PITCHER - PURP.(VERY SCARCE AND DESIRABLE; BOTTOM 1/2 IS AVERAGE)
- ___ 57. N Eight Sided Handled Bushel Basket - White (scarce; nice frosty color and irid.)
- ___ 58. N Wishbone ftd. Ruffled Bowl with Ruffles and Rings Ext. - Purp. (nice color and irid.)
- ___ 59. 6" N FERN BRAND CHOCOLATES FLAT PLATE WITH BASKETWEAVE EXT. - AMY. (RARE AND DESIRABLE; GREAT DETAIL; HAS ODD UNEVEN IRID.)
- ___ 60. N SINGING BIRDS STIPPLED HANDLED MUG - RENNINGER BLUE (EXTREMELY RARE AND DESIRABLE ITEM; GREAT BASE COLOR AND NICE IRID.)
- ___ 61. N Singing Birds Stippled Handled Mug - Blue (scarce; nice color and irid.)
- ___ 62. 9" N NIPPON PLATE WITH BASKETWEAVE EXT. - MARI. (RARE AND DESIRABLE ITEM; HAS NICE AVERAGE SATINY IRID.)
- ___ 63. 9" N Nippon 8 Ruffled Bowl with Basketweave Ext. - Green (very scarce and desirable; a nice example)
- ___ 64. 7 3/4" N Fruits and Flowers 2 sided Banana Dish with Basketweave Ext. - Purp. (scarce shape; nice irid.)
- ___ 65. 9" N STRAWBERRY PLATE WITH BASKETWEAVE EXT. - MARI. WITH OPAL. TIPS (EXTREMELY UNUSUAL AND DESIRABLE ITEM; NICE COLOR AND IRID. WITH OPAL. ON TIPS)
- ___ 66. 8 3/4" N Three Fruits Stippled Ruffled Bowl with Ribbed Ext. - Sapphire (always an attractive item but has chip on base; super shelf piece)
- ___ 67. 8 3/4" N THREE FRUITS PLATE WITH PLAIN EXT. - PURP. (SUPER COLOR AND IRID. - VERY ATTRACTIVE)
- ___ 68. 9" N Three Fruits Plate with Basketweave Ext. - Purp. (scarce; has reddish / gold irid.)
- ___ 69. N THREE FRUITS MEDALLION SPATULA FTD. RUFFLED BOWL WITH MEANDER EXT. - ICE BLUE (RARE ITEM TO FIND; NICE BASE COLOR WITH ATTRACTIVE IRID.)
- ___ 70. 9" N GOOD LUCK STIPPLED RUFFLED BOWL WITH RIBBED EXT. AND NARROW BASE - RENNINGER BLUE (RARE AND VERY DESIRABLE BASE COLOR; NICE IRID.)
- ___ 71. 9" N GOOD LUCK 8 RUFFLED BOWL WITH RIBBED EXT. - BLUE / ELEC. BLUE (VERY SCARCE AND ATTRACTIVE; NICE)
- ___ 72. 9" N Good Luck 8 Ruffled Bowl with Ribbed Ext. - Mari. (desirable item; has nice yellow irid.)
- ___ 73. 8 3/4" N Good Luck 8 Ruffled Bowl with Basketweave Ext. - Green (very scarce and desirable; nice satiny finish)
- ___ 74. N Good Luck Bowl with Pie Crust Edge and Basketweave Ext. - Purp. (scarce and desirable; nice satiny multi colored irid.)
- ___ 75. N G & C FTD. BANANA BOAT - WHITE (VERY SCARCE AND VERY DESIRABLE; NICE FROSTY COLOR AND IRID.)
- ___ 76. 7 3/4" N G & C 2 sided Banana Dish with Basketweave Ext. - Mari. (scarce shape; nice color and irid.)
- ___ 77. 10 3/4" N G & C Lg. 8 Ruffled Bowl with Basketweave Ext. - Mari. (nice sized item with nice irid.)
- ___ 78. 9" N G & C Variant Plate with Plain Ext. - Mari. (scarce; has an odd satiny irid.)
- ___ 79. N G & C Ruffled Hat Shape - Dk. Mari. (nice color and irid.)
- ___ 80. N G & C FTD. HATPIN HOLDER - GREEN (SCARCE; NICE COLOR; IRID, WITH NICE FEET)
- ___ 81. N G & C FTD. HATPIN HOLDER - DK. MARI. (SCARCE; HAS REALLY NICE COLOR AND IRID.)
- ___ 82. N G & C Cologne Bottle and Stopper - Purp. (very scarce; nice average color and irid.)
- ___ 83. N G & C Sweetmeat Whimsey Stemmed Compote - Purp. (scarce item; has spotty interior irid.)
- ___ 84. 8 3/4 - 9" N G & C 8 Ruffled Bowl with Basketweave Ext. - Green (nice satiny finish)
- ___ 85. 8 3/4" N G & C VARIANT 8 RUFFLED BOWL WITH PLAIN EXT. - PURP. (VERY ATTRACTIVE ITEM; NICE IRID.)
- ___ 86. N G & C Master Punch Base only - Purp. (perfect; has satiny finish)
- ___ 87. N Wild Rose ftd. Deep Flared Nut Bowl - Mari.
- ___ 88. Dugan Rose Wreath Rose Bowl - Mari.
- ___ 89. Dugan Rose Wreath Tri-Cornered Whimsey - Mari. (nice color and shape)
- ___ 90. DUGAN HARVEST FLOWER 5 PC. TANKARD WATER SET - MARI. (EXTREMELY RARE AND VERY DESIRABLE SET; THE PITCHER IS ABOUT AS RARE AS ANY)
- ___ 91. Dugan Beaded Shell Tumbler - Purp. (scarce; nice irid.)
- ___ 92. Dugan Daisy and Lattice 6 pc. Tankard Water Set - Mari. (nice color; has 2 chipped tumblers)
- ___ 93. 10" Dugan Lined Lattice Swung Vase - White (nice frosty irid.)

- ___ 94. 6 3/4" DUGAN CIRCLE SCROLL SWUNG VASE - PURP. (AN OUTSTANDING EXAMPLE; SUPER COLOR AND IRID.)
- ___ 95. DUGAN MANY FRUITS ROUND PUNCH BOWL WITH RUFFLED BASE - PURP. (VERY DESIRABLE SET; NICE COLOR AND IRID.)
- ___ 96. Dugan Fan fld. Handled Gravy Boat - Purp. (scarce base color; nice interior irid.)
- ___ 97. 7 3/4" Dugan Six Petals 6 Ruffled Bowl - Purp. (nice color and irid.)
- ___ 98. 8 3/4" Dugan Apple Blossom Twig 10 Ruffled Bowl - Purp. (very scarce item; is sorta satiny)
- ___ 99. Dugan Double Stem Rose Deep 10 Ruffled Bowl - Amy. (satiny finish)
- ___ 100. **DUGAN HEAVY IRIS TANKARD WATER PITCHER - WHITE (VERY RARE AND VERY DESIRABLE; FROSTY WITH SUPER IRID. - REALLY NICE)**
- ___ 101. 10 1/2" DUGAN SKI STAR LG. 6 RUFFLED BOWL WITH COMPASS EXT. - PURP. (VERY SCARCE COLOR; NICE IRID.; VERY DESIRABLE)
- ___ 102. **DUGAN PASTEL SWAN - MARI. (RARE COLOR; NICE CONDITION AND COLOR)**
- ___ 103. Dugan Stork in the Rushes Spooner - Mari. (nice color (and old); very scarce item)
- ___ 104. Dugan Grape Delight 6 fld. Rose Bowl - Blue (scarce)
- ___ 105. **DUGAN MARY ANN HANDLED VASE - AMY. (VERY SCARCE; NICE SATINY FINISH)**
- ___ 106. Dugan Mary Ann Handled Vase - Mari. (satiny)
- ___ 107. 9 3/4" Dugan Spirix Swung Vase - P. Opal. (nice opal.)
- ___ 108. 7 3/4" Dugan Holly Whirl 6 Ruffled Bowl - P. Opal. (nice opal.)
- ___ 109. 8" Dugan Six Petals 6 Ruffled Crimped Edge Bowl - P. Opal. (really nice opal.)
- ___ 110. **DUGAN FISHNET SINGLE LILY EPERGNE WITH CRIMPED LILY - P. OPAL. (VERY SCARCE AND VERY DESIRABLE; NICE OPAL.)**
- ___ 111. Dugan Open Opals Tri-Cornered Crimped Edge Stemmed Compote - P. Opal. (really nice opal.)
- ___ 112. Dugan Folding Fan 2 sided 6 Ruffled Crimped Edge Stemmed Compote - P. Opal. (nice opal. and irid.)
- ___ 113. 7 1/2" Dugan Triplet Exterior Handgrip Plate - P. Opal. (scarce; nice opal.)
- ___ 114. 6" Dugan Ski Star Deep Round Sauce with Crimped Edge - P. Opal. (scarce shape; pretty nice opal.)
- ___ 115. **9" DUGAN ROUND UP FLARED PLATE - P. OPAL. (VERY SCARCE; DESIRABLE - NICE OPAL.)**
- ___ 116. 8 3/4" Dugan Apple Blossom Twigs low 10 Ruffled Bowl - P. Opal. (nice opal.)
- ___ 117. 9" Dugan Apple Blossom Twigs low 10 Ruffled Bowl with Basketweave Ext. - P. Opal. (scarce; nice opal.)
- ___ 118. 9" Dugan Apple Blossom Twigs low 10 Ruffled Bowl - White (very scarce; really nice irid.)
- ___ 119. Dugan Weeping Cherries domed 10 Ruffled Bowl - Mari. (scarce pattern)
- ___ 120. **11 1/2" DUGAN PERSIAN GARDEN LG. ICE CREAM BOWL - WHITE (SCARCE AND DESIRABLE LARGE WHITE PIECE; NICE IRID.)**
- ___ 121. 5 3/4" Dugan Persian Garden ind. Ice Cream Bowl - White (nice irid.)
- ___ 122. 7" Dugan Persian Garden Plate with Pool of Pearls Ext. - White (scarce; irid. has blue highlights)
- ___ 123. 8 1/2" Dugan Fanciful low 10 Ruffled Bowl - White (scarce; really nice irid.)
- ___ 124. 9" Dugan Fanciful low 10 Ruffled Bowl - Lt. Mari. (light in color)
- ___ 125. 8 1/2" Dugan Flowers Frames domed 10 Ruffled Bowl - Dk. P. Opal. (very nice example; nice irid. and opal.)
- ___ 126. 9" Dugan Double Stem Rose domed 10 Ruffled Bowl - P. Opal. (nice satiny finish)
- ___ 127. 10 1/4" Dugan Ski Star Lg. 6 Ruffled Bowl with Compass Ext. - P. Opal. (nice opal.; has some small chips)
- ___ 128. 8 1/2" Dugan Windflower low 10 Ruffled Bowl - Mari.
- ___ 129. Dugan Handled Beaded Basket - Lt. Mari. / Clamb.
- ___ 130. **DUGAN FLORAL AND GRAPE HANDLED BULBOUS WATER PITCHER - LIME GREEN / MARI. (VERY RARE BASE COLOR FOR THIS PATTERN; DEFINITELY A TOUGH ITEM TO FIND)**
- ___ 131. 9 1/2" Dugan Caroline low 10 Ruffled Bowl - Dk. P. Opal. (really nice Mari. overlay)
- ___ 132. M'burg Country Kitchen Butter lid only - Mari. (very scarce table set part; tough!)
- ___ 133. M'burg Holly Sprig 2 sided Card Tray with Benesch 54th Anniversary - Mari. (satiny finish)
- ___ 134. M'burg Holly Sprig 2 sided Card Tray - Mari. (radium; nice)
- ___ 135. **10" M'BURG PEACOCK LG. ICE CREAM BOWL - GREEN (RARE AND VERY DESIRABLE HAS NO BEE AND NO BEADING; RADIUM AND REALLY ATTRACTIVE)**
- ___ 136. **9 1/2" M'BURG PEACOCK LG. FLARED MASTER BERRY BOWL - AMY. (RADIUM; NICE; HAS NO BEE AND NO BEADING)**
- ___ 137. (6) 5" M'burg Peacock Flared ind. Berry Bowls - Amy. (to match above; selling choice)
- ___ 138. 10 1/4" M'burg Peacock at the Urn Lg. 6 Ruffled Bowl - Mari. (satiny; nice; may have a couple of pinheads)
- ___ 139. M'burg Holly Sprig Deep Oval Handled Bon Bon - Amy. (radium; nice irid.)
- ___ 140. **9 1/2" M'BURG WHIRLING LEAVES TRI CORNERED CRIMPED EDGE BOWL - GREEN (RADIUM AND RARE; SUPER IRID. AND VERY DESIRABLE)**
- ___ 141. 10" M'burg Primrose 6 Ruffled Bowl - Green (radium with nice irid.)
- ___ 142. 9 1/2" M'burg Rays and Ribbons 6 Ruffled Bowl - Green (scarce shape; radium and nice)
- ___ 143. 8 1/2" M'burg Grape Wreath Variant Bowl with 3 in 1 Edge - Green (scarce and desirable; radium and nice)
- ___ 144. 10" M'burg Rays and Ribbons 6 Ruffled Bowl - Green (satiny)
- ___ 145. **8 1/2" M'BURG LITTLE STARS ICE CREAM SHAPED BOWL - GREEN (VERY RARE SIZE FOR THIS ITEM; HAS A SILVER RADIUM FINISH)**
- ___ 146. 10 1/2" M'burg Blackberry Wreath Bowl with 3 in 1 Edge - Green (scarce; satiny finish)
- ___ 147. 9 1/2" M'burg Rays and Ribbons Bowl with 3 in 1 Edge - Dk. Mari. (radium and very attractive)
- ___ 148. 10" M'burg Rays and Ribbons Flared Bowl with 3 in 1 Edge - Mari. (satiny finish)
- ___ 149. 10" M'burg Primrose Bowl with 3 in 1 Edge - Mari. (satiny finish)
- ___ 150. **8 1/2" M'BURG WHIRLING LEAVES ICE CREAM SHAPED BOWL - DK. MARI. (VERY SCARCE SHAPE; NICE IRID.; HAS 3 BRUISES ON BASE)**
- ___ 151. 7 1/2" M'burg Holly Sprig Ice Cream Shaped Bowl - Dk. Mari. (nice radium item; dark color and irid.)
- ___ 152. 8 - 9" M'burg Potpourri 4 sided Ruffled Bowl - Crystal (scarce)
- ___ 153. **M'BURG HANGING CHERRIES FLARED TUMBLER - GREEN (VERY SCARCE AND VERY DESIRABLE; NICE COLOR AND IRID.)**
- ___ 154. **M'BURG HANGING CHERRIES STRAIGHT UP TUMBLER - MARI. (ANOTHER VERY SCARCE ITEM; SATINY FINISH)**
- ___ 155. **6" M'BURG "THE GREAT HOUSE OF ISAAC BENESCH AND SONS" 6 RUFFLED BOWL - AMY. (VERY SCARCE AND DESIRABLE; NICE COLOR AND DETAIL)**
- ___ 156. 9" M'burg Fleur de Lei domed Ice Cream Shaped Bowl - Amy. (very scarce; domed foot in pretty good shape)
- ___ 157. **CAMBRIDGE INVERTED FEATHER TUMBLER - GREEN (VERY RARE AND VERY DESIRABLE; A REALLY TOUGH ITEM - NICE)**
- ___ 158. Cambridge Inverted Feather Stemmed Ruffled Compote - Mari. (nice color)
- ___ 159. **CAMBRIDGE INVERTED STRAWBERRY CANDLESTICK - MARI. (VERY SCARCE ITEM; ACTUALLY IN PRETTY GOOD SHAPE - NICE)**
- ___ 160. **CAMBRIDGE VENETIAN GIANT ROSE BOWL - GREEN (VERY RARE AND VERY DESIRABLE; GREAT IRID. - MAY HAVE A COUPLE DINGS)**
- ___ 161. Imperial Fine Cut Flower Stemmed Ruffled Compote - Mari. (scarce pattern)

- ___ 162. Imperial Tulip and Cane Stemmed Ruffled Compote - Mari. (scarce)
- ___ 163. Imperial Hobstar Flower Stemmed Ruffled Compote - Dk. Mari. (scarce item; great color and irid.)
- ___ 164. Imperial Octagon Stemmed Round Compote - Dk. Mari. (nice color)
- ___ 165. Imperial Embossed Scroll 8 Ruffled Compote with Curved Star Ext. - Purp. (super color with bright irid.)
- ___ 166. 9" Imperial Pansy 8 Ruffled Bowl - Purp. (nice item with goldish irid.)
- ___ 167. 7 3/4" Imperial Acanthus Deep Round Bowl - Purp. (great color and irid.)
- ___ 168. 7 3/4" Imperial Windmill Deep 8 Ruffled Bowl - Purp. (super color and irid.)
- ___ 169. 8 3/4" Imperial Grape 8 Ruffled Bowl - Purp. (another item with nice color and irid.)
- ___ 170. **10 1/4" IMPERIAL HOMESTEAD CHOP PLATE - PURP. (RARE AND VERY DESIRABLE; HAS GREAT IRID. - HAS SMALL CHIGGERS IN PATTERN)**
- ___ 171. Imperial Octagon Table size Water Pitcher - Purp. (rare item - has large chip near base)
- ___ 172. **IMPERIAL CHATELINE TUMBLER - PURP. (RARE AND DESIRABLE; FANTASTIC COLOR AND IRID.)**
- ___ 173. **IMPERIAL WINDMILL TUMBLER - PURP. (VERY SCARCE; REALLY NICE COLOR AND IRID.)**
- ___ 174. **12" IMPERIAL BEADED BULLSEYE SWUNG VASE - PURP. (SUPER COLOR AND IRID. - REALLY BRIGHT ITEM)**
- ___ 175. 11 1/2" Imperial Heavy Grape Chop Plate - Purp. (scarce and desirable - has a 2" crack near edge)
- ___ 176. **9 1/2" IMPERIAL EMBOSSED SCROLL FLAT PLATE - PURP. (TYPICAL BEAUTIFUL EXAMPLE - NICE)**
- ___ 177. **9" IMPERIAL OPEN ROSE PLATE - AMBER. (VERY SCARCE AND VERY DESIRABLE - NICE BASE COLOR)**
- ___ 179. 8" Imperial Heavy Grape Plate - Dk. Mari. (cute size)
- ___ 180. 19 1/2" Imperial Ripple Swung Funeral Vase - Mari. (very scarce - a really attractive large item)
- ___ 181. 15 3/4" Imperial Ripple Mid size Swung Vase - Mari. (nice color)
- ___ 182. 12" Imperial Ripple Mid size Swung Vase - Helios Green (silvery irid.)
- ___ 183. 7 3/4" Imperial Ripple Standard Swung Vase with Oblong top - Amber. (really attractive item in an odd shape)
- ___ 184. 9" Imperial Ripple Small Swung Vase - Purp. (really nice color and irid.)
- ___ 185. **10 3/4" TALL X 8" WIDE IMPERIAL GOTHIC ARCHES LG. SWUNG VASE - SMOKE (VERY RARE AND VERY DESIRABLE ITEM; GREAT IRID.)**
- ___ 186. 11" Tall Imperial Parlor Panels Swung Vase - Smoke (scarce item - nice irid. -small flake on rib)
- ___ 187. Imperial Star Medallion Stemmed Celery Vase - Dk. Smoke (really dark irid.; very scarce item)
- ___ 188. Imperial Grape Stemmed Goblet - Smoke (very scarce color for this item)
- ___ 189. Imperial Fashion Tumbler - Smoke (scarce; has ding on inside)
- ___ 190. **IMPERIAL LOGANBERRY VASE - AMBER. (RARE AND DESIRABLE; GREAT BASE COLOR AND IRID.)**
- ___ 191. 12" Imperial Beaded Bullseye Swung Vase - Purp. (another super iridized item; nice)
- ___ 192. 9 3/4 - 10" Imperial Beaded Bullseye Swung Vase - Dk. Mari. (great color and irid.)
- ___ 193. Imperial "Parlor Panels" Jack in the Pulpit Swung Vase - Dk. Mari. (nice color and irid.)
- ___ 194. 4 1/2" Tall Imperial Miniature Morning Glory Swung Vase - Mari. (nice size)
- ___ 195. **5 1/4" TALL X 5" TOP IMPERIAL PLAIN PANELS SWUNG FLARED VASE - MARI. / MILK GLASS (VERY SCARCE AND DESIRABLE SIZE; GREAT OVERLAY AND IRID.)**
- ___ 196. 6 3/4" Tall x 7 1/4" Wide Imperial Plain Panels Squatty Flared Vase - Mari. / Milk Glass (scarce item with a nice dark overlay)
- ___ 197. **8 1/2" IMPERIAL OPEN ROSE DEEP FLARED BOWL - ODD SAPPHIRE BLUE (RARE AND UNUSUAL BASE COLOR FOR THIS ITEM)**
- ___ 198. 10" Imperial Open Rose Deep Flared Bowl - Smoke (nice irid.)
- ___ 199. Imperial Lustre Rose ftd. Centerpiece Bowl - Helios Green (scarce shape; silvery irid.)
- ___ 200. **IMPERIAL HOBSTAR PICKLE CASTOR AND FRAME - MARI. (REALLY UNUSUAL ITEM; HARDLY EVER SOLD - PRETTY NEAT)**
- ___ 201. **IMPERIAL OCTAGON ROSE BOWL - PASTEL MARI. (ABOUT AS RARE AN IMPERIAL ITEM AS YOU'LL FIND - GREAT IRID.)**
- ___ 202. Imperial Open Rose Rose Bowl - Amber. (nice color; check in base)
- ___ 203. Imperial Frosted Block Small Rose Bowl - Dk. Mari. (scarce)
- ___ 204. 9" Imperial Open Rose Deep Flared Bowl - Aqua / Mari. (very unusual base color for this item)
- ___ 205. **IMPERIAL WAFFLE BLOCK PUNCH BOWL TOP ONLY - POWDER ICE BLUE (EXTREMELY RARE BASE COLOR; REALLY UNUSUAL)**
- ___ 206. Imperial Heavy Grape Punch Bowl and Base - Dk. Mari. (getting to be a scarce item to find)
- ___ 207. Imperial Tulip and Cane Stemmed Goblet - Dk. Mari. (scarce item; nice dark color and irid.)
- ___ 208. Imperial 474 Punch Bowl and Base - Mari. (nice color; has damage on the base)
- ___ 209. (3) Imperial 474 Punch Cups - Dk. Mari. (selling so much each for set)
- ___ 210. Imperial Octagon 7 pc. Table sized Water Set - Dk. Mari. (great color and irid. - well matched in color)
- ___ 211. Imperial Windmill Handled Water Pitcher - Mari. (nice color and detail)
- ___ 212. Imperial Windmill Tumbler - Mari. (nice irid.)
- ___ 213. Imperial Windmill Handled Milk Pitcher - Mari. (nice color and irid.)
- ___ 214. Unlisted (?) African Shield Imperial Sugar base with no lid - Mari. (not sure of pattern; needs a lid)
- ___ 215. Imperial Grape Handled Water Pitcher - Dk. Mari. (super example; almost amber.)
- ___ 216. Imperial Hobstar Band Handled Water Pitcher - Mari.
- ___ 217. Imperial Hobstar Band Tumbler - Mari.
- ___ 218. Imperial Lustre Rose 4 pc. Table Set - Mari. (selling as a set)
- ___ 219. (4) N'wood Stretch Concave Diamonds Tumblers - Celeste Blue (selling so much each for set)
- ___ 220. **WESTMORELAND WILD ROSE SYRUP JUG - MARI. (RARE AND DESIRABLE; NICE COLOR AND IRID.)**
- ___ 221. **WESTMORELAND DAISY SQUARES STEMMED FLARED CRIMPED EDGE COMPOTE - MARI. (VERY SCARCE AND VERY DESIRABLE; NICE COLOR)**
- ___ 222. **8 1/2" WESTMORELAND SCALES 6 RUFFLED BOWL - BLUE OPAL. (SCARCE; IRID. MAY BE SLIGHTLY WORN)**
- ___ 223. **8 1/2" WESTMORELAND DAISY WREATH 6 RUFFLED BOWL - BLUE OPAL. (VERY SCARCE; NICE COLOR AND OPAL.)**
- ___ 224. Westmoreland Corinth Jack in the Pulpit Vase - Amber (scarce color)
- ___ 225. **PRIMROSE AND FISHNET CYLINDER VASE - RED (NOT SURE IF THIS IS PRIMROSE (PETALS ARE NOT POINTED) - STILL A RARE ITEM)**
- ___ 226. **U.S. GLASS PEACOCK LAMP BASE - DARK (RARE AND UNUSUAL ITEM; NICE IRID. - DRILLED FOR A LAMP)**
- ___ 227. (2) U.S. Palm Beach Tumblers - Dk. Mari. (very scarce items - selling choice)
- ___ 228. 7" Tall U.S. Glass Palm Beach Swung Vase - White (rare item in this shape - has a chip on the base)
- ___ 229. **EUROPEAN ART GLASS DAISY PATTERNED MINIATURE LAMP - WHITE (THOUGHT TO HAVE BEEN DUGAN - BUT I SAY EUROPEAN - STILL RARE)**
- ___ 230. **5" TALL EUROPEAN GRAND THISTLE CORSET SHAPED VASE - DK. MARI. (VERY RARE AND UNUSUAL ITEM; NICE COLOR AND IRID.)**
- ___ 231. **11 1/2" EUROPEAN GRAND THISTLE LG. FLARED CHOP PLATE - MARI. (DEFINITELY HAVE NEVER SEEN THIS BEFORE - RARE; MAY HAVE A CHIP)**

232. 10 1/2" x 7" European Intaglio Vine Dresser Tray - Mari. (never seen this item before - really unusual)
233. Jenkins Daisy and Diamond Cut Stemmed Round Compote - Mari. (scarce shape for this pattern)
234. Beaded Carnival Oval 2 pc. Dresser Box - Dark (neat item)
235. **FOSTORIA BROCAIDED ACORN FTD. TUMBLER - ICE BLUE (VERY SCARCE ITEM; DIFFICULT TO FIND - NICE IRID.)**
236. **FOSTORIA BROCAIDED ACORN HANDLED WHIPPED CREAM PAIL - ICE BLUE (VERY SCARCE; NICE COLOR WITH REALLY NICE IRID.)**
237. (2) Fostoria Brocaided Acorns Flat Plates - Ice Blue (scarce items; nice irid.; selling choice)
238. Fostoria Brocaided Summer Gardens 3 pc. Console Set - White (very scarce to find complete - super irid.)
239. Imperial Brocaided Daffodil ftd. Mayonnaise Bowl - Ice Green (unusual item; nice irid.)
240. Jenkins Cut Flowers Lg. Cylinder - Lt. Mari. (scarce; heavy)
241. European "Cane" Stemmed Doughnut Tray - Dk. Mari. (scarce shape for this pattern; nice color)
242. European Asters Stemmed Doughnut Tray - Dk. Mari. (same shape as above; nice color and irid.)
243. Maker (?) 8" Tall odd Plain Swung Vase - Purp. (Australian, I presume; has large chip)
244. Depression Era Stippled Cherries Stemmed Compote - Mari. (unusual item)
245. **EUROPEAN OMNIBUS TUMBLER - OLIVE GREEN (VERY RARE BASE COLOR FOR THIS RARE PATTERN)**
246. **EUROPEAN OMNIBUS TUMBLER - DK. MARI. (RARE AND REALLY DIFFICULT ITEM TO LOCATE)**
247. **U.S. GLASS PALM BEACH IND. BERRY BOWL ROSE BOWL WHIMSEY WITH GOOSEBERRY INT. - WHITE WITH SILVER TRIM (VERY SCARCE AND DESIRABLE; NICE DECORATION)**
248. Fenton Blackberry Spray Flared Hat with Crimped Edge Hat - Dk. Mari.
249. Fenton Blackberry Spray 6 Ruffled Hat - Amber. (scarce base color)
250. **9 1/2" FENTON LEAF CHAIN FLAT PLATE WITH BERRY EXT. - ELEC. BLUE (RARE AND VERY DESIRABLE; NICE DARK COLOR AND IRID.)**
251. **9 1/2" FENTON PEACOCK AT THE URN FLAT PLATE WITH BERRY EXT. - DK. MARI. (VERY SCARCE AND DESIRABLE; NICE DARK COLOR AND IRID.)**
252. 6 1/2" Fenton Persian Medallion Flat Plate - Dk. Mari. (nice color and irid.)
253. 9 1/2" Fenton Orange Tree Flat Plate - White (very scarce; has super irid.)
254. 8" Fenton Orange Tree Ice Cream Shaped Bowl - Blue (nice color and irid.)
255. **5 1/4" FENTON 2 ROW OPEN EDGE ICE CREAM SHAPED HAT - ICE GREEN (DESIRABLE ITEM; FROSTY WITH NICE IRID. - TOUGH TO FIND)**
256. 8" Fenton Holly Ice Cream Shaped Bowl - Blue (nice color and irid.)
257. **FENTON HOLLY STEMMED 6 RUFFLED COMPOTE - GREEN (VERY SCARCE AND DESIRABLE ITEM IN THIS COLOR)**
258. 11" Fenton Chrysanthemum Lg. ball ftd. 8 Ruffled Bowl - Dk. Mari. (nice irid. and detail)
259. 8" Tall x 7 1/2" Across Fenton Stretch Flared Vase - White (nice large scarce Fenton Stretch item; frosty)
260. **12" FENTON STAG AND HOLLY BALL FTD. CHOP PLATE - DK. MARI. (VERY RARE AND VERY DESIRABLE; SUPER DARK COLOR WITH GREAT IRID. - REALLY TOUGH ITEM)**
261. **9 3/4" FENTON STAG AND HOLLY BALL FTD. ICE CREAM SHAPED BOWL - BLUE (RARE AND DESIRABLE; HAS A RADIUM FINISH THAT'S REALLY NICE)**
262. **17 1/2" TALL FENTON RUSTIC SWUNG FUNERAL VASE - DK. MARI. (VERY SCARCE AND VERY TOUGH TO LOCATE ANYMORE - GREAT COLOR)**
263. 6" Fenton Boggy Bayou Squatty Swung Vase - Lime Green / Mari. (desirable base color and size)
264. 6 1/2" Fenton Diamond Point Column Squatty Swung Vase - Lime Green / Mari. (another popular size and base color)
265. **6 1/2" FENTON 1911 BPOE ELKS ATLANTIC CITY ICE CREAM SHAPED BOWL - BLUE (RARE AND VERY DESIRABLE ITEM; GREAT DETAIL AND NICE IRID. - A TOUGHIE)**
266. 8" Fenton Ribbon Tie Round Bowl with tight Crimped Edge - Green (nice color)
267. 8 1/2" Fenton Ribbon Tie Bowl with 3 in 1 Edge - Amy.
268. 8 3/4" Fenton Lotus and Grape Bowl with 3 in 1 Edge - Dk. Mari. (very scarce shape and color for this item)
269. 10" Fenton Vintage Grape low Bowl with 3 in 1 Edge - Blue (nice size and irid.)
270. **6 1/2" FENTON PEACOCK TAIL ICE CREAM SHAPED BOWL - RED (VERY RARE PATTERN TO FIND IN THIS COLOR - LOOKS RED; HAS BETTER IRID. ON EXTERIOR)**
271. **8" FENTON DRAGON AND LOTUS ICE CREAM SHAPED BOWL - RED / AMBERINA (RARE AND DESIRABLE; BRIGHT RED AROUND OUTSIDE - YELLOW IN THE MIDDLE)**
272. **5 1/2" FENTON STIPPLED RAYS ROUND DOMED BOWL - RED (SCARCE; NICE BASE COLOR; IRID. A BIT SILVERY)**
273. **FENTON 2 ROW OPEN EDGE 2 SIDED HAT - RED (SCARCE AND DESIRABLE; NICE BASE COLOR - SATINY)**
274. **FENTON 2 ROW OPEN EDGE LG. SIZE 2 SIDED HAT - WHITE (VERY SCARCE - A TOUGH ITEM IN THIS SIZE - NICE AND FROSTY - GREAT IRID.)**
275. **6" X 8 1/4" FENTON 3 ROW OPEN EDGE 4 SIDED RUFFLED HAT - CELESTE BLUE (RARE AND VERY DESIRABLE ITEM; NICE DARK BASE COLOR AND GREAT IRID.)**
276. Fenton 2 Row Open Edge 6 Ruffled Hat - Lt. Amy. / Mari. (odd base color - some would say lavender)
277. 1985 Fenton C.C.G.A. Fenton 2 Row Open Edge Jack in the Pulpit Hat - Aqua Opal. (new item but very attractive)
278. 8 1/4" Tall Fenton "Ruffled Ribbed" Ruffled Top Triple Pinched Vase - Mari. (scarce item; unusual)
279. Fenton Bird and Cherries Stemmed 6 Ruffled Compote - Blue (scarce)
280. **9 1/2 - 9 3/4" FENTON DRAGON AND STRAWBERRY LG. 8 RUFFLED BOWL - GREEN (RARE AND DESIRABLE ITEM IN THIS COLOR - NICE IRID. AND DETAIL)**
281. 7 3/4" Fenton Dragon and Lotus Spatula ftd. 8 Ruffled Bowl - Green (nice color and irid.; sorta scarce)
282. 8 3/4" Fenton Dragon and Lotus 8 Ruffled Bowl - Blue (nice satiny finish)
283. 11" Fenton Stag and Holly Lg. ball ftd. 8 Ruffled Bowl - Mari. (nice color and detail)
284. 8 1/2" Fenton Stag and Holly Spatula ftd. Ice Cream Shaped Bowl - Mari. (nice color)
285. **9" FENTON PEACOCK AND GRAPE 8 RUFFLED BOWL - LIME GREEN OPAL. (RARE AND DESIRABLE BASE COLOR; NICE OPAL. ON EDGE WITH GREAT IRID.)**
286. 8 3/4" Fenton Peacock and Grape 8 Ruffled Bowl - Blue (nice color and detail)
287. 8 1/2" Fenton Peacock at the Urn 6 Ruffled Bowl - White (very scarce; nice irid.; frosty)
288. 9 1/2" Fenton Peacock at the Urn Flat Plate - Very Weak Mari. (probably as light an example as I've seen)
289. 8 3/4" Fenton Peacock at the Urn 8 Ruffled Bowl - Dk. Mari. (really nice color)
290. **FENTON ORANGE TREE HANDLED LOVING CUP - "ELEC." GREEN (ABSOLUTELY FANTASTIC EXAMPLE; A REAL BEAUT!)**
291. **FENTON HORSEHEAD MEDALLION BALL FTD. NUT BOWL - POWDER BLUE / MARI. (VERY SCARCE BASE COLOR FOR THIS PATTERN)**

- ___ 292. Fenton Horsehead Medallion ball ftd. Jack in the Pulpit Bowl - Mari. (nice satiny color and shape)
- ___ **293. FENTON KITTENS CUP AND SAUCER - MARI. (VERY SCARCE AND DESIRABLE; WELL MATCHED WITH NICE DETAIL)**
- ___ 294. Fenton Kittens 6 Ruffled Bowl - Lt. Mari. (scarce; color just a tad light)
- ___ 295. Fenton Kittens 4 sided Ruffled Bowl - Mari. (scarce; popular item with nice color)
- ___ 296. 4 1/2" Fenton Kittens Saucer only - Dk. Mari. (really tough if ya need it; nice color)
- ___ 297. 2 1/2" Tall Fenton Kittens Squatty Toothpick Holder - Dk. Mari. (nice dark color; very desirable)
- ___ 298. 5 1/2" Fenton Feathered Serpent Tri Cornered Bowl - Amy. (very scarce shape; nice satiny finish)
- ___ 299. 6 1/4" Fenton Little Flowers 6 Ruffled Sauce - Blue (nice color)
- ___ **300. 8 1/4" FENTON FINE RIB SWUNG VASE - MARI. / MOONSTONE (EXTREMELY RARE COLOR FOR THIS ITEM; GREAT EXAMPLE WITH THE MARIGOLD OVERLAY)**
- ___ 301. 9" Fenton Fine Rib Swung Vase - Amy. (very scarce base color; satiny irid.)
- ___ 302. 12 1/4" Fenton Fine Rib Mid size Swung Vase - Amy. (scarce base color and a scarce size)
- ___ 303. 12 1/2" Fenton Fine Rib Mid size Swung Vase - Dk. Mari. / Vaseline (scarce; has an attractive base color)
- ___ 304. 11" Tall Fenton April Showers Swung Vase with Peacock Tail Int. - Green (super example for this pattern)
- ___ **305. 7 3/4" TALL FENTON THREE DIAMONDS AND BOWS SWUNG VASE - WHITE (RARE COLOR FOR THIS PATTERN; NOT MANY KNOWN)**
- ___ 306. 15 1/2" Tall Fenton rustic Mid size Swung Vase - Dk. Mari. (nice size and nice dark color)
- ___ 307. 12" Tall Fenton Plume Panels Swung Vase - Green (scarce color)
- ___ 308. 6 1/2" Tall Fenton Butterfly and Berry Squatty Swung Vase - Blue (sorta different size)
- ___ 309. 8 1/2" Tall Fenton Butterfly and Berry Swung Vase - Green (shipped on base but still a scarce item)
- ___ **310. 8 - 8 1/4" TALL FENTON BUTTERFLY AND BERRY SWUNG VASE - AMBER. (VERY RARE BASE COLOR FOR THIS PATTERN; REALLY NICE)**
- ___ 311. 13 3/4" Tall Fenton Diamond Point Columns Swung Vase - Green (scarce)
- ___ 312. Fenton Blackberry Spray Jack in the Pulpit Crimped Edge Hat - Amy. (scarce shape in this color)
- ___ 313. Fenton Blackberry Spray Jack in the Pulpit Crimped Edge Hat - Aqua / Mari. (scarce base color)
- ___ 314. Fenton Blackberry Spray Jack in the Pulpit Crimped Edge Hat - odd Mari. (an odd tint)
- ___ **315. 9 1/2" FENTON TEN MUMS BOWL WITH 3 IN 1 EDGE - AMY. (VERY SCARCE AND VERY DESIRABLE; NICE IRID.; A TOUGH PATTERN)**
- ___ **316. 8 1/2" FENTON THISTLE BOWL WITH 3 IN 1 EDGE - AMY. (AN UNBELIEVABLE ITEM - HAS A SUPER RADIUM FINISH; GREAT IRID.)**
- ___ 317. 10" Fenton Little Flowers Lg. 6 Ruffled Bowl - Green (satiny finish)
- ___ 318. 5 1/2" Fenton Two Flowers ball ftd. Round Flared Sauce - Pop Bottle Aqua / Mari. (sorta unusual base glass color)
- ___ **319. 7 1/2" FENTON COIN DOT 8 RUFFLED BOWL - AQUA / MARI. (VERY UNUSUAL BASE COLOR FOR THIS PATTERN)**
- ___ 320. 11" Fenton Two lg. ball ftd. 8 Ruffled Bowl - Blue (scarce and very desirable; nice color and irid.)
- ___ 321. 8 1/4" Fenton Orange Tree Ice Cream Shaped Bowl - Blue (another nice example of this Fenton item)
- ___ 322. 8 1/2" Fenton Holly Ice Cream Shaped Bowl - Sorta Renninger Blue (unusual base glass color effect - very attractive)
- ___ 323. Fenton Vintage Grape ftd. Fern Dish - Elec. Blue (super, super irid. - bright blues)
- ___ 324. Fenton Bouquet Tumbler - Blue (scarce color)
- ___ **325. FENTON FENTONIA FRUIT TUMBLER - BLUE (VERY RARE PATTERN VARIATION; HAVEN'T SOLD ONE IN YEARS)**
- ___ 326. Fenton Blackberry Spray 4 sided Hat - Mari. / Vaseline (nice base glass color)
- ___ 327. Fenton Holly low Ruffled Hat - Lt. Mari. / on Powder Blue (odd tint)
- ___ 328. Fenton Flowering Dill 6 Ruffled Hat - Blue
- ___ 329. Fenton Strawberry 4 sided Handled Bon Bon - Blue (nice color)
- ___ **330. FENTON CAPTIVE ROSE STEMMED RUFFLED COMPOTE - WHITE (VERY SCARCE ITEM; NICE AND FROSTY WITH GREAT IRID.)**
- ___ **331. FENTON HOLLY STEMMED 6 RUFFLED COMPOTE - FOREST GREEN (UNUSUAL BASE COLOR; NICE COLOR AND IRID.)**
- ___ **332. FENTON HOLLY STEMMED 6 RUFFLED COMPOTE - GREEN (VERY SCARCE; NICE DARK COLOR AND IRID.)**
- ___ 333. Fenton Holly Stemmed 6 Ruffled Compote - Aqua / Mari. (scarce base color with mari. overlay)
- ___ 334. Fenton Holly Stemmed 6 Ruffled Compote - Pink / Mari. (sorta scarce base glass color)
- ___ 335. Fenton Holly Stemmed 6 Ruffled Compote - Amy. (very scarce; nice color and irid.)
- ___ 336. Fenton Holly Stemmed 6 Ruffled Compote - Blue (odd item; irid. on exterior only)
- ___ 337. Fenton Holly Stemmed 6 Ruffled Compote - Very Lt. Pastel Blue / Mari. (a difference in lead content; odd)
- ___ 338. Fenton Miniature Blackberry Compote - Amy. (scarce color in pretty nice shape)
- ___ 339. Fenton Miniature Blackberry Compote - Mari. (scarce; satiny)
- ___ 340. Fenton Vintage Grape small size Single Lily Epergne - Green (scarce; nice color and irid.)
- ___ 341. Fenton Lotus and Poinsettia ftd. Ruffled Sauce - Lime Green / Mari. (scarce base color - nice)
- ___ 342. Fenton Stretch Jack in the Pulpit Hat wit Enameled Decoration - Celeste Blue (odd item; decoration worn a bit)
- ___ 343. Fenton Persian Medallion Hair Receiver - Dk. Mari. (super dark color and irid.)
- ___ 344. 7" Fenton Stippled Rays Flat Plate - Mari.
- ___ 345. Fenton Wine and Roses Stemmed Goblet - Powder Blue / Mari. (odd color for this item; different)
- ___ 346. 9" Fenton Persian Medallion Lg. Bowl with Tight Crimped Edge - Dk. Mari. (scarce; nice color)
- ___ **347. 8" FENTON CONCORD GRAPE BOWL WITH 3 IN 1 EDGE - DK. MARI. (VERY SCARCE; NICE DARK COLOR AND IRID.)**
- ___ **348. 9" FENTON PLAID 8 RUFFLED BOWL - MARI. (VERY SCARCE; DARK COLOR; SILVERY IRID.)**
- ___ 349. 7" Fenton Peacock and Dahlia 6 Ruffled Bowl - Mari. (satiny)
- ___ 350. 8" Fenton Orange Tree Ice Cream Shaped Bowl - White (scarce; nice irid.)
- ___ 351. 6" Fenton Cherry Chain Plate with Orange Tree Ext. - Mari. (satiny example)
- ___ 352. Fenton Pastel Swan - Ebony (unusual item; not irid.; scarce)
- ___ 353. Fenton Pastel Swan - Lime Ice Green (scarce base color)
- ___ 354. Fenton Pastel Swan - Ice Green
- ___ 355. Fenton Pastel Swan - Pink (small flake on inside)
- ___ 356. Fenton Pastel Swan - Celeste Blue (nice color)
- ___ 357. Diamond Shaped Beaded Purse wit Clasp - Dark (unusual style)
- ___ 358. Beaded Clutch Bag - Dark
- ___ 359. Large Beaded Handled Hand Bag - Dark
- ___ 360. Small Beaded Hand Purse with Zipper and Fringe - Dark
- ___ 361. Beaded Purse wit Beaded Handle - Dark
- ___ 362. Frame with 16 Buttons - Dark
- ___ 363. Frame with 15 Buttons - Dark
- ___ 364. Frame with 15 Buttons - Dark
- ___ 365. SURPRISE!!!

FOR THE RESULTS OF THIS OR ANY
BURNS AUCTION SERVICE AUCTION SEND A SASE AND \$3.00
(INCLUDE NAME OR DATE OF AUCTION) TO:

EMMA TILTON
221 N. PLUM ST., GNADENHUTTEN, OH 44629

