



BURNS

AUCTION SERVICE

Sunshine State Carnival Glass Association Convention Auction

Friday & Saturday
February 5 & 6, 1999

Friday: 6:00 pm, preview 3:00 pm (Lots 1 - 160)

Saturday: 9:00 am, preview 8:00 am (Lots 161 - end)

at the

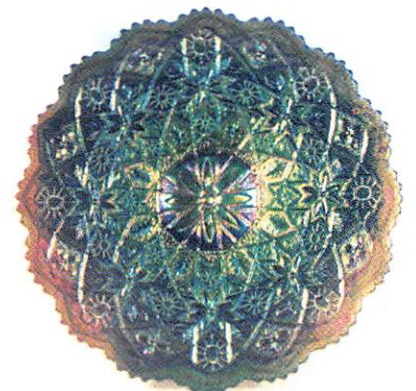
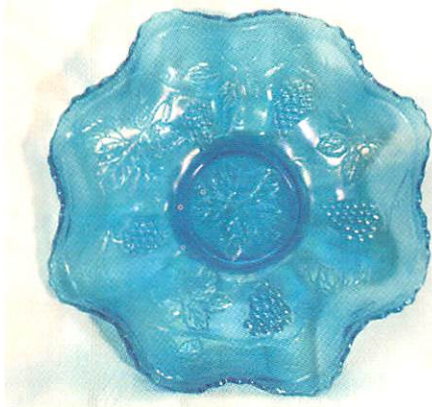
Ramada Plaza Beach Resort

4060 Galt Ocean Drive

Ft. Lauderdale, FL 33308

*(Take Exit 32, Oakland Park Blvd., off I-95, east to Rte A1A,
take A1A north to 41st Street; take right - hotel on left)*

(954) 565-6611 or 1-800-678-9022



This year starts out just a tad different than in years past. Because Florida is such a haven for Major League Baseball and it's Spring Training, we figured we'd try our own version of a Double Header there this winter. We are really excited about the new Sunshine State Carnival Glass Association and its Convention.

It's our pleasure to present to you the inaugural SSCCA Convention Auction. This year is going to be a bit of a test for all us to see how wet we want to get our fingers. There is glass from all over the US and Canada - making for a well diversified selection. So come on down - get the heck out of the cold - and participate in something new and different.

The Ramada Plaza Beach Resort of Ft. Lauderdale will host the event. It's located off I-95 Exit 32, follow Blvd. east to A1A, north to 41st, then hang a right.

For further information contact Jackie Poucher, 9087 Baywood Park Dr., Seminole, FL 33777; Ph: (727) 398-1866. Email: jpoucher@msn.com. Mail, phone Email & Fax bids due by Monday, February 1, 1999.

Burns Auction Service

Tom Burns
P.O. Box 608
Bath, New York 14810
(607) 776-7942

Bill Richards
44 Water St., Poland, OH 44514
(330) 757-2001
FAX (330) 757-4917

Bill Richards, III
2253 Country Lane
Poland, OH 44514
(330) 755-2620

Bill Richards, Auctioneer FL License #AU0001621

Maid Bids honored under the following conditions:

1. No deposit required. Bidders will take full responsibility to honor any and all bids we execute for them. Payment in full plus postage and handling required after notification and before we ship any item to them.
2. Items are bid on in perfect condition with average or above average iridescence OR as listed in the brochures. Bids will not be carried out when damage on an item has been found during the auction. **PEOPLE PRESENT AT AUCTION ARE RESPONSIBLE FOR FINDING ANY PINHEADS, WEAR, SPOTTINESS, MANUFACTURER'S DEFECTS OR ANY OTHER MINOR FLAWS, ETC.**
3. Successful bidders will be notified by collect call from the auctioneer (**so be sure to include phone number**).
4. Phone inquiries about the glass or any other questions are welcome.
5. If you have some other person at the auction bidding for you, they must pay for the item before taking it.
6. Any terms or conditions given the day of the auction will supersede any previously published information.
7. Mail, Email, FAX and Phone bids due by Monday, February 1, 1999.

- | | |
|-------------------------------------------------------------------------------------------------------------------------------------------------------------------------------------------------------------------------------------------------------------------------------------------------------------------------------------------------------------------------------------------------------------------------------------------------------------------------------------------------------------------------------------------------------------------------------------------------------------------------------------------------------------------------------------------------------------------------------------------------------------------------------------------------------------------------------------------------------------------------------------------------------------------------------------------------------------------------------------------------------------------------------------------------------------------------------------------------------------------------------------------------------------------------------------------------------------------------------------------------------------------------------------------------------------------------------------------------------------------------------------------------------------------------------------------------------------------------------------------------------------------------------------------------------------------------------------------------------------------------------------------------------------------------------------|--------------------------------------------------------------------------------------------------------------------------------------------------------------------------------------------------------------------------------------------------------------------------------------------------------------------------------------------------------------------------------------------------------------------------------------------------------------------------------------------------------------------------------------------------------------------------------------------------------------------------------------------------------------------------------------------------------------------------------------------------------------------------------------------------------------------------------------------------------------------------------------------------------------------------------------------------------------------------------------------------------------------------------------------------------------------------------------------------------------------------------------------------------------------------------------------------------------------------------------------------------------------------------------------------------------------------------------------------------------------------------------------------------------------------------------------------------------------------------------------------------------------------------------------------------------------------------------------------------------------------------------------------------------------------------------------------------------------------------------------------------------------------------------------|
| <p>___ 1. Fenton Pastel Swan - Celeste Blue</p> <p>___ 2. Fenton Pastel Swan - Ice Green</p> <p>___ 3. Fenton Pastel Swan - Pink</p> <p>___ 4. 6" Australian Kangaroo 12 Ruffled Sauce - Mari. (very scarce and desirable item; nice)</p> <p>___ 5. 10" Australian Magpie 8 Ruffled Bowl - Purp. (scarce; nice; has chip on back of one ruffle)</p> <p>___ 6. European Stevens and Williams 3 Lily Epergne with Swirl Lilies - Mari. (unusual; has one damaged lily)</p> <p>___ 7. Sowerby Covered Hen Butter Dish - Mari. (scarce; nice color)</p> <p>___ 8. N Daisy and Plume Stemmed Ruffled Rose Bowl - Green (nice color)</p> <p>___ 9. N Daisy and Plume Stemmed Ruffled Rose Bowl - Mari.</p> <p>___ 10. N ROUND HANDLED BUSHEL BASKET - SAPPHIRE (RARE AND DESIRABLE; IRID. IS SILVERY)</p> <p>___ 11. N Round Handled Bushel Basket - Blue (scarce; nice color; goldish)</p> <p>___ 12. N Round Handled Bushel Basket - Dk. Mari. (super example; great dark color and irid.)</p> <p>___ 13. N Eight Sided Handled Bushel Basket - White (scarce; nice irid.)</p> <p>___ 14. N Tornado Lg. size Tri-Cornered Vase - Purp. (rare and desirable; bottom 1/2 lacks irid.; has peeling roughness on base)</p> <p>___ 15. N G & C CANDLELAMP SHADE ONLY - GREEN (VERY RARE PART; SHADE HAS MARI. INTERIOR OVERLAY AND EXTERIOR IS SILVERY)</p> <p>___ 16. N G & C 7 pc. Water Set - Purp. (great color and irid.; chip on thumbprint of pitcher)</p> <p>___ 17. N G & C with Thumbprint 5 pc. Berry Set - Purp. (nice color and irid.)</p> <p>___ 18. N G & C 2 Handled Bon Bon with Basketweave Ext. - Green (nice color; chip off one knob)</p> | <p>___ 19. 7 1/2" N G & C Plate with Basketweave Ext. - Amy. (sorta lavender with a reddish / blue irid.; nice)</p> <p>___ 20. N G & C STIPPLED COVERED CRACKER JAR - SORTA RENNINGER BLUE (RARE AND DESIRABLE COLOR FOR THIS PIECE; SOME DAMAGE ON THE PRONGS)</p> <p>___ 20A N G & C 6 PC. WHISKEY SET - PURP. (HAVEN'T SOLD ONE OF THESE IN A LONG TIME; SETS ARE TOUGH TO FIND; THIS ONE MATCHES NICELY)</p> <p>___ 21. N G & C Covered Sweetmeat Compote - Purp. (lid is perfect and nice, small flake on base)</p> <p>___ 22. N G & C ftd. Hatpin Holder - Purp. (irid. nice on top half; small chip on base of one toe)</p> <p>___ 23. N G & C ftd. Banana Boat - Purp. (scarce; nice irid. on outside, spotty irid. in center)</p> <p>___ 24. N G & C FTD. STIPPLED AND BANDED BANANA BOAT - MARI. (REALLY NICE EXAMPLE; NICE PINK HIGHLIGHTS)</p> <p>___ 25. N G & C ftd. Hatpin Holder - Mari. (scarce; nice color - has chip on one toe)</p> <p>___ 26. N G & C Cologne Bottle and Stopper - Mari. (has bright yellow, blue and pink highlights)</p> <p>___ 27. N Daisy and Plume ftd. Ruffled Candy Dish with Berry Int. - Mari.</p> <p>___ 28. N Daisy and Plume ftd. Rose Bowl with Stippled Rays Int. - Green (hardly any irid.)</p> <p>___ 29. Pair 8" N'wood Stretch Florentine Candlesticks - Russet Green (attractive pair)</p> <p>___ 30. N MEMPHIS 8 PC. FRUIT BOWL SET - PURP. (AS ATTRACTIVE A SET OF THESE AS I'VE SEEN; NICE BRIGHT IRID. - WELL MATCHED)</p> <p>___ 31. N GOOD LUCK 8 RUFFLED BOWL WITH RIBBED EXT. - BLUE (NICE MULTI-COLORED ITEM - VERY ATTRACTIVE)</p> <p>___ 32. N Good Luck Bowl with Pie Crust Edge and Basketweave Ext. - Purp. (multi-colored, satiny irid.)</p> |
|-------------------------------------------------------------------------------------------------------------------------------------------------------------------------------------------------------------------------------------------------------------------------------------------------------------------------------------------------------------------------------------------------------------------------------------------------------------------------------------------------------------------------------------------------------------------------------------------------------------------------------------------------------------------------------------------------------------------------------------------------------------------------------------------------------------------------------------------------------------------------------------------------------------------------------------------------------------------------------------------------------------------------------------------------------------------------------------------------------------------------------------------------------------------------------------------------------------------------------------------------------------------------------------------------------------------------------------------------------------------------------------------------------------------------------------------------------------------------------------------------------------------------------------------------------------------------------------------------------------------------------------------------------------------------------------|--------------------------------------------------------------------------------------------------------------------------------------------------------------------------------------------------------------------------------------------------------------------------------------------------------------------------------------------------------------------------------------------------------------------------------------------------------------------------------------------------------------------------------------------------------------------------------------------------------------------------------------------------------------------------------------------------------------------------------------------------------------------------------------------------------------------------------------------------------------------------------------------------------------------------------------------------------------------------------------------------------------------------------------------------------------------------------------------------------------------------------------------------------------------------------------------------------------------------------------------------------------------------------------------------------------------------------------------------------------------------------------------------------------------------------------------------------------------------------------------------------------------------------------------------------------------------------------------------------------------------------------------------------------------------------------------------------------------------------------------------------------------------------------------|

33. N Grape Leaves 8 Ruffled Bowl - Green (nice irid.)
34. N Three Fruits 8 Ruffled Bowl with Plain Ext. - Purp. (nice average irid.)
35. **N LEAF AND BEADS FTD. ROSE BOWL - AQUA OPAL. (VERY SCARCE; NICE OPAL. AND IRID. - ATTRACTIVE)**
36. N Leaf and Beads ftd. Rose Bowl - Purp. (nice satiny finish)
37. N Leaf and Beads ftd. Rose Bowl - Mari. (nice color)
38. **N LEAF AND BEADS FTD. ROSE BOWL WITH FLORAL INT. - GREEN (VERY SCARCE AND DESIRABLE; ONE OF THE NICER EXAMPLES)**
39. N Leaf and Beads ftd. Rose Bowl with Stippled Rays Int. - Mari.
40. **N HEARTS AND FLOWERS STEMMED COMPOTE WITH RIBBED EXT. - AQUA OPAL. (RARE AND DESIRABLE; NICE OPAL. AND IRID. - ALWAYS A GOODIE)**
41. N Hearts and Flowers Stemmed Ruffled Compote - Aqua Opal. (nice opal.; very scarce; small chip on base)
42. **N HEARTS AND FLOWERS STEMMED RUFFLED COMPOTE - WHITE (SCARCE; VERY DESIRABLE)**
43. **7 1/2" N FRUIT AND FLOWERS 6 RUFFLED BOWL WITH BASKETWEAVE EXTERIOR - BLUE (SCARCE AND DESIRABLE; HAS NICE BRIGHT BLUE IRID.)**
44. N Wild Rose ftd. Candy Dish with Rayed Int. - Mari.
45. **N PEACOCK AT THE FOUNTAIN HANDLED WATER PITCHER - BLUE (THESE PARTICULAR ITEMS ARE BECOMING MORE AN MORE POPULAR; NICE RED AND GOLD HIGHLIGHTS; NICE)**
46. N Singing Bird Handled Mug - Elec. Blue (desirable with bright highlights)
47. N Daisy and Drape ftd. Turned In Vase - White (scarce; nice and frosty)
48. **N PEACOCKS PLATE WITH RIBBED EXTERIOR - PURP. (SUPER EXAMPLE; NICE BRIGHT MULTI-COLORED IRID.; ONE OF THE BETTER EXAMPLES I'VE SOLD LATELY)**
49. **CONSOLIDATED REGAL IRIS GONE WITH THE WIND LAMP - MARI. / CARAMEL (EXTREMELY RARE AND DESIRABLE; GREAT IRID.; SOME LIGHTNESS TO BASE GLASS COLOR)**
50. **N LATTICE AND POINSETTIA FTD. 8 RUFFLED BOWL WITH RIBBED EXT. - VASELINE OPAL. (NOT CARNIVAL BUT PROBABLY ONE OF THE MOST DESIRABLE OPALESCENT NOVELTIES SOLD LATELY)**
51. **N PEACOCKS RUFFLED BOWL WITH RIBBED EXT. - BLUE OPAL. (NOT CARNIVAL; HAS AS MUCH OPAL. AS I'VE SEEN ON ONE OF THESE; SUPER EXAMPLE)**
52. N Wishbone ftd. 8 Ruffled Bowl with Ruffles and Rings Ext. - Purp. (a real beauty; great irid.)
53. N Nippon 8 Ruffled Bowl with Basketweave Ext. - Purp. (satiny finish; has small chip on base)
54. N Raspberry Handled Water Pitcher - Mari. (scarce; nice color and irid.)
55. N Greek Key Domed 8 Ruffled Bowl with Stippled Rays Int. - Mari. (nice color)
56. N Sunflower spatula ftd. Ruffled Bowl with Meander Ext. - Mari. (rough on base; satiny)
57. N Wild Flower ftd. Flared Candy Dish - Purp. (silvery / gold irid.)
58. N Beaded Cable ftd. Ruffled Rose Bowl with Stippled Rays Int. - Amy. (nice satiny finish)
59. Beaded Cable ftd. Ruffled Rose Bowl - Mari. (nice color)
60. **N FRUITS AND FLOWERS STEMMED 2 HANDLED BON BON WITH BASKETWEAVE EXT. - ELEC. GREEN (FANTASTIC EXAMPLE; ONE OF THE VERY BEST I'VE SEEN)**
61. N Fruits and Flowers Stemmed Handled Bon Bon with Basketweave Ext. - Elec. Blue (super color and irid.; has small chip on one point)
62. N Ivy Town Pump - Green (rare and very desirable; has check at bottom of handle)
63. N Peacock at the Fountain Tumbler - Blue (nice color)
64. 7 1/2 - 8" N Tree Trunk Squatty Swung Vase - Purp. (silvery irid.)
65. **N ACORN BURR 8 PC. PUNCH SET - GREEN (RARE AND DESIRABLE; SUPER EXAMPLE AND WELL MATCHED)**
- 65A **N ACORN BURR 8 PC. PUNCH SET - PURP. (RARE AND VERY DESIRABLE SET; NICE DARK BASE COLOR; NICE MULTI-COLORED IRID.)**
66. N G & C Covered Powder Jar - Purp. (scarce; desirable with nice color and irid.)
67. N G & C Tumbler - Purp. (nice color)
68. N Singing Bird Handled Mug - Purp. (nice average item)
69. N Memphis Handled Punch Cup - Dk. Mari.
70. **N ROSE SHOW DEEP FLARED PLATE - MARI. (RARE AND VERY DESIRABLE; NICE BRIGHT IRID. WITH YELLOW HIGHLIGHTS)**
71. N Wishbone ftd. Ruffled Bowl with Ruffles and Rings Ext. - Dk. Mari. (super, super irid. - great example)
72. **N BLOSSOMTIME STEMMED RUFFLED COMPOTE - DK. MARI. (ABSOLUTELY SUPER EXAMPLE; FANTASTIC)**
73. N Peacocks Plate with Plain Ext. - Ice Green (very scarce with excellent irid.)
74. **N PEACOCKS PLATE WITH RIBBED EXT. - ICE GREEN (VERY SCARCE AND VERY DESIRABLE; SUPER EXAMPLE - ONE OF THE BETTER ONES)**
75. **N WIDE PANEL 4 LILY EPERGNE - PURP. (RARE, DESIRABLE; SATINY IRID.; HAS SMALL SHARP PULLED POINT FLAKE AND ROUGHNESS BETWEEN SIDE LILY INSERTS)**
76. **N G & C VARIANT BOWL WITH PIE CRUST EDGE AND RIBBED EXT. - ELEC. BLUE (SUPER EXAMPLE WITH BRIGHT BLUE IRID. - A REAL SCREAMER)**
77. **FENTON G & C FTD. RUFFLED FRUIT BOWL WITH PERSIAN MEDALLION INT. - AMY. (SCARCE AND DESIRABLE ITEM; NICE SATINY IRID.)**
78. 8" Fenton G & C ball ftd. 8 Ruffled Bowl - Amy. (average irid.)
79. 8 1/2" Fenton Vintage Grape Bowl with Tight Candy Ribbon Edge - Green (nice shape)
80. **8 1/2 - 9" FENTON HEART AND VINE VARIANT 8 RUFFLED BOWL WITH BERRY EXT. - GREEN (TALK ABOUT A RARE BOWL - SCARCE VARIATION IN PATTERN WITH FANTASTIC IRID. - NICE)**
81. 9 1/2 - 10" Fenton Little Flowers Lg. 8 Ruffled Bowl - Blue (really nice item for a big Fenton bowl)
82. Fenton 2 Row Open Edge Lg. size 6 Ruffled Hat - Blue (scarce size)
83. Fenton 2 Row Open Edge 6 Ruffled Hat - Blue
84. Fenton Bouquet 7 pc. Handled Bulbous Water Set - Dk. Mari. (very scarce, underpriced set; pitcher has great irid.)
85. **9 1/2" FENTON 10 MUMS BOWL WITH TIGHT CANDY RIBBON EDGE - AMY. (VERY SCARCE AND DESIRABLE; SUPER IRID. - AN EXCELLENT EXAMPLE)**
- 85A **7 1/2" FENTON ACORN LOW RUFFLED BOWL - AMBER (VERY SCARCE COLOR; REALLY NICE IRID.)**
86. Fenton Paneled Dandelion Tumbler - Amy. (average example)
87. 9 1/2" Fenton Coin Dot Low Bowl with 3 in 1 Edge - Amy.
88. Fenton Butterfly and Berry Tumbler - Blue
89. Fenton Peacock at the Urn Stemmed Ruffled Compote - Mari.
- 89A **FENTON PEACOCK AT THE URN FLAT PLATE - BLUE (EXCELLENT EXAMPLE HAS WONDERFUL BRIGHT MULTI-COLORED IRID.)**
90. **FENTON BLACKBERRY SPRAY 4 SIDED SQUARE HAT - RED (EXCELLENT COLOR AND IRID. - SORTA SATINY BUT VERY ATTRACTIVE)**
91. **FENTON HORSEHEAD MEDALLION FTD. ROSE BOWL - BLUE (VERY SCARCE AND DESIRABLE; NICE DETAIL AND IRID. - NICE)**
92. Fenton Leaf Tier ftd. Tumbler - Mari. (very scarce item)
93. Fenton Butterfly and Berry ind. Round Berry Bowl - Lt. Mari.
94. Fenton Orange Tree Breakfast Open Sugar - Mari. (small open bubble on top edge)
- 94A **FENTON ORANGE TREE HANDLED SHAVING MUG - MANDARIN RED SLAG (EXTREMELY RARE AND VERY DESIRABLE; IRID. A TAD LIGHT)**

- ___ 95. **FENTON ORANGE TREE HANDLED LOVING CUP - GREEN (ABSOLUTELY FANTASTIC EXAMPLE WITH BRIGHT IRID. AND A NICE COLOR - PERFECT)**
- ___ 96. (1) Fenton Lattice and Grape and (1) Fenton Floral and Grape Tumblers - Mari. (selling so much each for pair)
- ___ 97. Fenton Orange Tree Ice Cream Shaped Bowl - Blue (really nice color and irid.)
- ___ 98. 8 1/2" Fenton Vintage Grape Bowl with 3 in 1 Edge - Mari. (satiny)
- ___ 99. 9 1/4" Fenton Holly 8 Ruffled Bowl - Mari. (satiny)
- ___ 99A **FENTON HOLLY 8 RUFFLED BOWL - AMY. (ABSOLUTELY OUTSTANDING EXAMPLE; DOES HAVE BUBBLE IN BODY)**
- ___ 100. **8 1/2" M'BURG PEACOCK DEEP ROUND BOWL - LT. MARI. (RADIUM AND IN A RARE SHAPE; LIGHT IRID. IN CENTER - TOOL MARK ON EXTERIOR)**
- ___ 101. **9 1/2 - 10" M'BURG PEACOCK AT THE URN LG. 6 RUFFLED BOWL - AMY. (SATINY FINISH; HAS BEE - NO BEADING - NICE)**
- ___ 102. 7 1/2" M'burg Little Stars 6 Ruffled Bowl - Amy. (scarce; nice satiny finish - nice detail)
- ___ 103. 9 1/2" M'burg Nesting Swan 6 Ruffled Bowl - Mari. (satiny; light in center)
- ___ 104. M'burg Diamond Tumbler - Amy. (nice irid.)
- ___ 105. M'burg Hanging Cherries Covered Sugar Bowl - Amy. (base cracked)
- ___ 106. **DEPRESSION ERA STIPPLED CHERRIES TUMBLER - DK. MARI. (SUPER EXAMPLE; ONE OF VERY FEW KNOWN - NICE)**
- ___ 107. Imperial Star and File Tumbler - Dk. Mari. (nice color and irid.)
- ___ 108. Imperial Fieldflower Tumbler - Dk. Mari.
- ___ 109. Imperial Robin Handled Mug - Mari.
- ___ 110. **IMPERIAL WAFFLE BLOCK AND HOBSTAR LG. HANDLED FLOWER BASKET - MARI. (VERY SCARCE ITEM; PERFECT WITH NICE COLOR)**
- ___ 111. 8" Tall x 6 1/2" Wide Imperial Beaded Bullseye odd Squatty Swung Vase - Dk. Mari. (odd shape; great color and irid.)
- ___ 112. Imperial Ribbed (Parlor Panels) Jack in the Pulpit Vase - Mari. (nice color)
- ___ 113. Imperial Grape Wine Decanter and Stopper - Dk. Mari.
- ___ 114. IG Imperial Grape Wine Decanter and Stopper - Helios Green
- ___ 115. **IMPERIAL JACOB'S LADDER ROSE BOWL - DK. MARI. (RARE AND DESIRABLE ITEM; GREAT COLOR AND IRID. - A TOUGH ITEM TO FIND)**
- ___ 116. 9" Imperial 3 in 1 Lg. Ruffled Master Berry Bowl - Dk. Mari. (nice color)
- ___ 117. 9" Imperial Hattie Deep Round Bowl - Mari.
- ___ 118. 6" Imperial Twins Ruffled ind. Berry Bowl - Mari.
- ___ 119. 8 1/2" Imperial Embossed Scroll 8 Ruffled Bowl - Purp. (super irid.)
- ___ 120. **IMPERIAL FLUTE AND CANE TANKARD MILK PITCHER - MARI. (VERY SCARCE ITEM)**
- ___ 121. Imperial Windmill Handled Milk Pitcher - Helios Green (chip on inside edge)
- ___ 122. Imperial Windmill Handled Milk Pitcher - Dk. Mari. (nice color and detail)
- ___ 123. Imperial Hobstar Handled Creamer - Helios Green (quite a rare item in this color - irid. is silvery)
- ___ 124. Imperial Hobstar Covered Sugar Bowl - Helios Green (another rare item especially to find an old one - has silvery irid.)
- ___ 125. **DUGAN FLOWERS AND FRAMES DOMED 10 RUFFLED BOWL - PURP. (VERY DESIRABLE ITEM ESPECIALLY WITH THE SUPER IRID. THIS ONE HAS)**
- ___ 126. Dugan Double Stem Rose domed Deep 10 Ruffled Bowl - Amy. (satiny finish)
- ___ 127. 6 - 7" Dugan Fishscale and Beads deep 8 Ruffled Bowl - Mari.
- ___ 128. Dugan Waterlily and Cattail Tumbler - Dk. Mari. (great color)
- ___ 129. Dugan Beaded Shell Tumbler - Purp. (nice color and irid.)
- ___ 130. **9" DUGAN APPLE BLOSSOM TWIG PLATE WITH BASKETWEAVE EXT. - P. OPAL. (VERY SCARCE AND DESIRABLE - NICE OPAL. AND IRID.)**
- ___ 131. Dugan Big Basketweave Handled Basket - Mari. (tiny flake on side)
- ___ 132. Dugan Handled Beaded Basket - Mari.
- ___ 133. Dugan Basketweave Miniature Handled Flower Basket - Mari.
- ___ 134. Dugan Long Thumbprint Creamer - Mari.
- ___ 135. **DUGAN FISHERMANS HANDLED MUG - LT. AMY. (RARE COLOR VARIATION; MOST CAN'T BE SEEN THROUGH; THIS ONE IS A NICE EXAMPLE)**
- ___ 136. Dugan Stork in the Rushes with Lattice Band Handled Mug - Mari.
- ___ 137. Dugan Grape Delight ftd. Nut Bowl - Purp. (really nice color and irid.)
- ___ 138. Dugan Grape Delight ftd. Ruffled Rose Bowl - Purp. (another nice example)
- ___ 139. Card of Buttons - Dark
- ___ 140. **DUGAN FORMAL JACK IN THE PULPIT VASE - PURP. (VERY SCARCE AND VERY DESIRABLE; A NICE EXAMPLE WITH BRIGHT MULTI-COLORED IRID.)**
- ___ 140A **DUGAN FORMAL HATPIN HOLDER - PUR. (RARE AND VERY DESIRABLE; REALLY NICE COLOR AND IRID.)**
- ___ 141. Dugan Grapevine Lattice 7 pc. Tankard Water Set - Amy. (pitcher cracked but still a rare set)
- ___ 142. Dugan Grape Delight 6 ftd. Ruffled Rose Bowl - Blue (scarce base color)
- ___ 143. Dugan Grape Delight 6 ftd. Flared Nut Bowl - Blue (scarce)
- ___ 144. **7 1/2" DUGAN FISHSCALE DEEP PLATE WITH TIGHT CRIMPED EDGE - PURP. (SCARCE; NICE BRIGHT SATINY IRID.)**
- ___ 145. **9" DUGAN ROUND UP FLAT PLATE - BLUE (SILVERY BUT QUITE A TOUGH ITEM; NICE)**
- ___ 146. Dugan Double Stem Rose domed Round Bowl - Amy. (satiny irid.)
- ___ 147. (3) Dugan Peacock at the Fountain Tumblers - Blue (selling choice; nice color)
- ___ 148. Dugan Vintage Grape Stemmed Wine Glass - Amy.
- ___ 149. (6) Dugan Vintage Grape Stemmed Wine Glasses - Mari. (selling so much each for set)
- ___ 150. **DUGAN PONY 10 RUFFLED BOWL - ICE GREEN (RARE AND VERY DESIRABLE; A TOUGHIE THAT MAY HAVE A TINY FLAKE SOMEWHERE)**
- ___ 151. Dugan Pony 6 Ruffled Bowl - Mari. (satiny finish)
- ___ 152. 9 1/2" Dugan Cosmos Variant Ice Cream Shaped Bowl - Mari. (scarce shape)
- ___ 153. 8 1/2 - 9" Dugan Apple Blossom Twig low Ruffled Plate with Basketweave Ext. - Mari.
- ___ 154. 6 1/2" Dugan Fishscale and Beads 8 Ruffled Bowl - Mari.
- ___ 155. **8 1/2" DUGAN BROOKLYN BRIDGE 6 RUFFLED BOWL - DK. MARI. (RARE AND DESIRABLE; HAS A SORTA RADIUM FINISH; NICE COLOR)**
- ___ 156. **DUGAN BUTTERFLY AND TULIP LG. FTD. SQUARE DEEP BOWL WITH IFF EXT. - MARI. (VERY SCARCE ITEM; IT'S DEEP BUT TRIES TO SQUARE OFF ON TOP)**
- ___ 157. Dugan Apple and Pear Lg. Oval Master Berry Bowl - Mari. (satiny)
- ___ 158. Dugan Jeweled Heart Tumbler - Dk. Mari. (a real beauty; super dark color and irid.)
- ___ 159. Dugan Handled Beaded Basket - Mari.
- ___ 160. Dugan Lattice Band Handled Flower Basket - Mari.
- START OF SECOND SESSION**
- ___ 161. Dugan (?) Vintage Grape 8 Ruffled Bowl - Mari. (odd pattern)
- ___ 162. 8 1/2" Dugan Apple Blossom Twig Ice Cream Shaped Bowl - P. Opal. (scarce; nice color and opal.)
- ___ 163. Dugan Question Mark 2 Handled Bon Bon - P. Opal. (nice opal.)
- ___ 164. 8 - 8 1/2" Dugan Six Petals low 6 Ruffled Bowl - P. Opal. (nice opal. and irid.)
- ___ 165. **DUGAN GARDEN PATH VARIANT CHOP PLATE WITH SODA GOLD EXT. - PURP. (EXTREMELY RARE AND EXTREMELY DESIRABLE; HAS ATTRACTIVE BLUE HIGHLIGHTS; HAS TO BE AS NICE AS THESE GET!!!)**

- ___ 165A **DUGAN PERSIAN GARDEN CHOP PLATE - MARI. WITH OPAL. TIPS (RARE AND VERY DESIRABLE; HAS OPAL. ON TIPS - REALLY ROUGH)**
- ___ 166. 8 1/2" Dugan Round Up Ice Cream Shape Bowl - P. Opal. (satiny with opal. on edge)
- ___ 167. 8 1/2" Dugan Fanciful Ice Cream Shape Bowl - White (super irid.; very scarce)
- ___ 168. Beaded Purse with Drawstring - Dark
- ___ 169. Beaded Choker Necklace - Dark
- ___ 170. **N PEACOCKS RUFFLED BOWL WITH RIBBED EXT. - AQUA OPAL. (A PASTEL EXAMPLE THAT IS VERY ATTRACTIVE AND DESIRABLE; NICE OPAL.)**
- ___ 171. **N PEACOCK AT THE FOUNTAIN STEMMED RUFFLED COMPOTE WITH RIBBED EXT. - AQUA OPAL. (VERY RARE ITEM; NICE OPAL. WITH SLIGHT BUTTERSCOTCH OVERLAY; HAS CHIP ON BASE)**
- ___ 172. **N HEARTS AND FLOWERS STEMMED RUFFLED COMPOTE WITH RIBBED EXT. - BLUE OPAL. (NOT CARNIVAL; ACTUALLY QUITE A RARE LITTLE ITEM; HAS EXCELLENT OPAL. AND DETAIL)**
- ___ 173. **N PEACOCKS RUFFLED BOWL WITH RIBBED EXT. - DK. MARI. (VERY DESIRABLE AND HAPPENS TO BE A REAL BEAUTY; NICE)**
- ___ 174. N Peacock at the Urn All Over Stippled ind. Ice Cream Bowl - Blue (very scarce; has average multi-colored irid.)
- ___ 175. **N "DREIBUS PARFAIT SWEETS" 6 RUFFLED BOWL - LT. AMY. (RARE AND DESIRABLE; ATTRACTIVE)**
- ___ 176. **N THREE FRUITS STIPPLED PLATE WITH RIBBED EXT. - PURP. (VERY SCARCE AND DESIRABLE; HAS RED AND BLUE AND GOLD IRID. - NICE)**
- ___ 176A **N THREE FRUITS MEDALLION STIPPLED 8 RUFFLED BOWL WITH MEANDER EXT. - LIME GREEN OPAL. (A NICE DARK ICE GREEN OPAL. BASE COLOR WITH EXCELLENT IRID. AND A LIGHT MARIGOLD OVERLAY)**
- ___ 177. **N THREE FRUITS STIPPLED PLATE WITH RIBBED EXT. - DK. MARI. (VERY SCARCE AND DESIRABLE; NICE IRID. WITH RED HIGHLIGHTS)**
- ___ 177A **N THREE FRUITS MEDALLION STIPPLED 8 RUFFLED BOWL WITH MEANDER EXT. - AQUA OPAL. (EXCELLENT EXAMPLE; MOSTLY PASTEL WITH SLIGHT BUTTERSCOTCH OVERLAY)**
- ___ 178. **N G & C FTD. HATPIN HOLDER - GREEN (A REAL NICE EXAMPLE - GREAT DETAIL WITH NICE IRID.)**
- ___ 179. **N G & C BANDED FTD. HATPIN HOLDER - MARI. (A RARE VARIATION; NICE COLOR AND IRID. - QUITE A TOUGH ITEM)**
- ___ 180. N G & C Dresser Tray - Yellow Camphor Irid. (rare item; haven't seen many of these - unusual)
- ___ 181. 8 1/2" Imperial Windmill Deep 8 Ruffled Bowl - Purp. (super example; super irid. and detail - nice)
- ___ 182. 8 1/2" Imperial Sand and Shell 8 Ruffled Bowl - Amy. (another super example - really bright irid.)
- ___ 183. 8 1/2" Imperial Heavy Grape Flat Plate - Purp. (really nice example; bright multi-colored irid.)
- ___ 184. **9 1/2" IMPERIAL EMBOSSED SCROLL FLAT PLATE - PURP. (VERY SCARCE AND VERY DESIRABLE - NICE IRID.)**
- ___ 185. **IMPERIAL HOMESTEAD NUART CHOP PLATE - PURP. (RARE AND VERY DESIRABLE EXCELLENT DETAIL AND IRID.; HAS A FLAW ALONG THE EDGE - MAY BE DAMAGE)**
- ___ 186. Imperial Chrysanthemum Chop Plate with Painted Decoration - Milk Glass (old and unusual; tough item to find)
- ___ 187. 11 - 12" Imperial Heavy Grape Chop Plate - Mari. (nice color and irid.)
- ___ 188. **6" IMPERIAL GRAPE FLAT PLATE - PURP. (SCARCE AND VERY DESIRABLE; NICE IRID.)**
- ___ 189. 6" M'burg Blackberry Wreath ind. Ice Cream Bowl - Amy. (radium and a beaut; nice irid.)
- ___ 190. **FENTON PERSIAN MEDALLION 2 HANDLED 4 SIDED BON BON - RED (RARE AND VERY DESIRABLE; NICE SATINY IRID.)**
- ___ 190A **8 1/2 - 9" FENTON HOLLY 8 RUFFLED BOWL - RED (VERY ATTRACTIVE EXAMPLE WITH BRIGHT RED HIGHLIGHTS - ONE OF THE BETTER EXAMPLES I'VE SOLD LATELY)**
- ___ 191. **FENTON TWO ROW OPEN EDGE 6 RUFFLED HAT - RED (HAS DARK SATINY FINISH; SCARCE)**
- ___ 191A **8 1/2" FENTON DRAGON AND LOTUS ICE CREAM SHAPED BOWL - RED / AMBERINA (RARE; VERY DESIRABLE; IRID. IS A BIT DARKER)**
- ___ 192. **FENTON TWO ROW OPEN EDGE JACK IN THE PULPIT HAT - GREEN (VERY SCARCE COLOR IN A DESIRABLE SHAPE)**
- ___ 193. Fenton Kittens Cup and Saucer - Mari. (scarce and very desirable; nice detail)
- ___ 194. **7 1/2" FENTON VINTAGE GRAPE FLAT PLATE - AMY. (SUPER, SUPER EXAMPLE; GREAT RADIUM TYPE IRID.)**
- ___ 195. **9" FENTON VINTAGE GRAPE 8 RUFFLED BOWL - CELESTE BLUE (EXTREMELY RARE AND VERY DESIRABLE; SUPER BASE COLOR AND STRETCH EFFECT; GREAT IRID.)**
- ___ 196. **9" FENTON VINTAGE GRAPE 8 RUFFLED BOWL - PERSIAN BLUE / MARI. (ANOTHER RARE FENTON BASE COLOR; PERFECT WITH NICE OPAQUE BASE GLASS AND MARIGOLD OVERLAY)**
- ___ 197. Fenton Sailboat Stemmed Wine Glass - Mari. (nice detail)
- ___ 198. Fenton Orange Tree Stemmed Goblet - Mari.
- ___ 199. Fenton Wine and Roses Stemmed Goblet - Mari. (nice detail)
- ___ 200. **FENTON HORSEHEAD MEDALLION FTD. ROSE BOWL - BLUE (RARE; DESIRABLE; TOUGH BASE GLASS COLOR WITH EXCELLENT DETAIL)**
- ___ 201. **FENTON STAG AND HOLLY GIANT FTD. ROSE BOWL - DK. MARI. (RARE; DESIRABLE; GREAT IRID. AND DETAIL)**
- ___ 202. Fenton Stag and Holly spatula ftd. 8 Ruffled Bowl - Mari. (nice color and detail)
- ___ 203. 9" Fenton Feather Stitch 8 Ruffled Bowl - Mari. (scarce pattern)
- ___ 204. 8 3/4" Fenton Dragon and Lotus 8 Ruffled Bowl - Mari.
- ___ 205. **9 - 9 1/2" FENTON CAPTIVE ROSE FLAT PLATE - DK. MARI. (RARE COLOR FOR THIS ITEM; NICE COLOR WITH A SATINY FINISH)**
- ___ 206. 7 1/2" Fenton Horsehead Medallion Flat Plate - Mari. (chip off one point, but has nice color and detail)
- ___ 207. 9 - 9 1/2" Fenton Three Fruits 12 sided Plate - Amy. (an item that's getting tougher to locate)
- ___ 208. 8 1/2 - 9" Fenton Holly 6 Ruffled Bowl - Amy. (really nice color and irid.)
- ___ 209. 8 3/4" Fenton Thistle Bowl with 3 in 1 Edge - Amy. (satiny finish)
- ___ 210. 9" Fenton Peacock at the Urn 6 Ruffled Bowl - Blue (scarce item with a bronze finish - nice)
- ___ 211. Fenton Cherries and Blossoms and Drape 7 pc. Bulbous Water Set - Blue (very unusual to find this with the Drape interior; a very scarce item; nice)
- ___ 212. 6 1/2 - 7" Tall Fenton Boggy Bayou Squatty Swung Vase - Green / Mari. (rough spot on tip of one point)
- ___ 213. 15 - 16" Tall Fenton Rustic Mid size Swung Vase - Mari. (nice color and irid.; a nice large piece)
- ___ 214. 10 - 10 1/2" Tall Fenton Fine Rib Standard Swung Vase - Red (scarce and desirable; may have some slight roughness)
- ___ 215. Fenton Thistle ftd. Banana Boat - Blue (scarce; has an average satiny finish)
- ___ 216. 8 1/2" Fenton Orange Tree Ice Cream Shaped Bowl - Blue (excellent color and irid. - has really nice color and irid. - bright)
- ___ 217. Fenton Persian Medallion Lg. Stemmed Ruffled Crimped Compote - Blue (base glass is dark but has light irid.)
- ___ 218. Fenton Orange Tree 6 pc. Punch Set with Bowl sitting on a Silver Plate Base - Mari. (makes for a different set; from England (?))

219. 8 3/4" Fenton Peacock and Grape Ice Cream Shaped Bowl - Mari. (satiny finish)
220. Fenton Lattice and Grape 7 pc. Tankard Water Set - Mari. (attractive set; nice color)
221. Fenton Compote Vase with Rayed Int. - Mari.
222. Fenton Persian Medallion Hair Receiver - Dk. Mari. (super irid.)
223. 8 1/2" Fenton Ribbon Tie Bowl with 3 in 1 Edge - Mari.
224. 8 1/2" Fenton Heart and Vine 6 Ruffled Bowl - Blue (goldish irid.)
225. 7 - 8" M'BURG LETTERED COURTHOUSE ICE CREAM SHAPED BOWL - AMY. (RADIUM AND VERY DESIRABLE; IRID. TENDS TO GET A LITTLE BIT SILVERY - TOUGH ITEM)
- 225A M'BURG LETTERED COURTHOUSE 6 RUFFLED BOWL - AMY. (RADIUM; RARE AND DESIRABLE; HAS REALLY NICE EVEN IRID.)
226. 7 1/2" M'burg Little Stars 6 Ruffled Bowl - Amy. (scarce item with silvery irid.)
227. 9 1/2" M'burg Holly Whirl 6 Ruffled Bowl - Amy. (very attractive with a nice radium finish)
228. Issac Benesch 54th Ann. 2 Handled Card Tray - Lt. Mari. (satiny irid.)
229. M'BURG SWIRL HOBNAIL ROSE BOWL - DK. MARI. (AN EXCELLENT EXAMPLE; NICE DARK COLOR)
230. 9 1/2" M'BURG STRAWBERRY WREATH LG. 6 RUFFLED BOWL - MARI. (A REALLY NICE, LARGE RADIUM ITEM; SCARCE PATTERN)
231. 9 1/2" M'burg Seaweed Bowl with 3 in 1 Edge - Mari. (very scarce pattern; satiny with a chip on collar base)
232. 9 1/2" M'burg Whirling Leaves 6 Ruffled Bowl - Mari. (satiny finish)
233. 9 1/2" M'burg Primrose 6 Ruffled Bowl - Green (radium finish; very desirable)
234. 7 - 7 1/2" Cambridge Inverted Strawberry Ice Cream Shaped Bowl - Green
235. 6 1/2" M'BURG STRAWBERRY WREATH (?) 6 RUFFLED SAUCE - ELEC. GREEN (THIS HAS TO BE ONE OF THE BETTER EXAMPLES I'VE EVER SEEN; SUPER BLUE!!)
236. FENTON BLACKBERRY SPRAY CRIMPED EDGE JACK IN THE PULPIT HAT - RED (GOLDISH IRID.; HAS NICE RED BASE COLOR - SCARCE)
237. FENTON 2 ROW OPEN EDGE 4 SIDED SQUARE RUFFLED HAT - RED (NICE COLOR; NICE SATINY FINISH)
238. 9 - 9 1/2" EUROPEAN FOUR FLOWER VARIANT FLAT PLATE - AMBER (RARE COLOR FOR THIS ITEM; HAS EXCELLENT IRID.; NICE)
239. DUGAN BEAUTY BUD VASE WITH TRI-CORNERED TOP - PURP. (VERY RARE NOVELTY ITEM; HAS TRI-CORNERED TOP WITH AVERAGE SATINY IRID.)
240. N HEARTS AND FLOWERS STEMMED RUFFLED COMPOTE WITH RIBBED EXT. - ICE BLUE OPAL. (ABSOLUTELY SUPER EXAMPLE; HAS TO BE LISTED AS ICE BLUE; YOU'LL SEE AS SOON AS YOU LOOK AT IT!)
241. N HEARTS AND FLOWERS STEMMED RUFFLED COMPOTE WITH RIBBED EXT. - AQUA OPAL. (RARE AND DESIRABLE; NICE COLOR AND OPAL. AND DIFFERENT THAN #240)
242. N HEARTS AND FLOWERS STEMMED RUFFLED COMPOTE WITH RIBBED EXT. - ELEC. BLUE (RARE, VERY DESIRABLE WITH EXCELLENT IRID.; NICE)
243. N HEARTS AND FLOWERS STEMMED RUFFLED COMPOTE WITH RIBBED EXT. - DK. MARI. (GREAT COLOR AND IRID.; NICE ITEM - DESIRABLE)
244. N NIPPON BOWL WITH PIE CRUST EDGE AND RIBBED EXT. - PURP. (THIS HAS TO BE THE BEST EXAMPLE OF THIS PATTERN I'VE SEEN... PERIOD)
245. N ROSE SHOW 8 RUFFLED BOWL - AQUA OPAL. (RARE AND DESIRABLE A NICE PASTEL EXAMPLE WITH EXCELLENT IRID.)
246. N WISTERIA TUMBLER - LIME ICE GREEN (RARE AND DESIRABLE; ONLY A FEW KNOWN EXAMPLES - LIGHT IRID.)
247. 6 1/2 - 7" TALL N TREE TRUNK SQUATTY SWUNG VASE - ELEC. BLUE (RARE AND VERY DESIRABLE; SUPER SQUATTY SIZE WITH EXCELLENT IRID.)
248. N G & C (Variation) Punch Bowl, Base and 6 Cups - Mari. (scarce; has a satiny finish; nice color)
249. N G & C Table Size Punch Bowl and Base - Purp. (very scarce and desirable; nice color and irid.)
250. 17 - 18" N TREE TRUNK SWUNG FUNERAL VASE - PURP. (RARE AND DESIRABLE; NICE COLOR AND IRID.; SLIGHT PEELING ON EDGE)
- 250A N GREEK KEY TANKARD WATER PITCHER & 3 TUMBLERS - PURP. (RARE AND DESIRABLE WITH EXCELLENT IRID.; BECOMING VERY DIFFICULT TO OBTAIN)
251. N BEADED CABLE FTD. RUFFLED ROSE BOWL - LAVENDER (LT. AMY.) (VERY RARE AND VERY DESIRABLE BASE COLOR - NICE)
252. N Peacock at the Fountain Tumbler - Blue (scarce; has electric blue highlights)
253. N Cherry and Cable ind. Round Berry Bowl - Mari. (scarce item)
254. 7 1/2" N G & C Handgrip Plate with Basketweave Ext. - Mari. (scarce; has satiny finish)
255. N POPPY SHOW 8 RUFFLED BOWL - DK. MARI. (QUITE A SCARCE ITEM IN THIS COLOR; NOT A LOT HAVE SOLD LATELY!!)
- 255A N POPPY SHOW PLATE - BLUE (RARE AND DESIRABLE; NICE AVERAGE IRID.; MAY HAVE TINY CHIP IN PATTERN)
256. N Raspberry Handled Milk Pitcher - Green (scarce item; has nice average satiny finish)
257. N G & C Variant Plate with Basketweave Ext. - Mari. (really nice example - attractive)
258. N PEACOCK AT THE FOUNTAIN COVERED BUTTER DISH - WHITE (RARE ITEM NOT OFTEN SOLD ANYMORE; NICE IRID.)
259. N PEACOCK AT THE FOUNTAIN HANDLED CREAMER - WHITE (ANOTHER REALLY TOUGH ITEM TO FIND IF YOU'RE LOOKING - A TOUGHIE)
260. N MEMPHIS 8 PC. PUNCH SET - PURP. (RARE SET; NICE AVERAGE IRID.; HAS ONE SMALL MANUF. SPLIT)
261. N Blackberry Stemmed Ruffled Compote with Basketweave Ext. - Purp. (scarce item; nice irid.)
262. 10 - 10 1/2" N Thin Rib Standard Swung Vase - Amy. (nice color and irid.)
263. N G & C ftd. Hatpin Holder - Purp. (goldish irid.; scarce and desirable)
264. N G & C Stippled Handled Bon Bon with Basketweave Ext. - Dk. Mari. (scarce; has nice bright irid.)
265. 9 1/2" N G & C STIPPLED 8 RUFFLED BOWL WITH BASKETWEAVE EXT. - ELEC. BLUE (RARE AND VERY DESIRABLE - A SUPER BRIGHT BLUE EXAMPLE)
266. N PEACOCKS PLATE WITH RIBBED EXT. - ICE BLUE (RARE AND VERY DESIRABLE - HAS NICE BRIGHT IRID. AND ATTRACTIVE BASE COLOR)
267. 9 - 10" Dugan Lined Lattice Standard Swung Vase - Purp. (scarce; nice color and irid.)
268. 9" IMPERIAL OPEN ROSE ROUND FLARED BOWL - SORTA RENNINGER BLUE (UNUSUAL BASE COLOR WHEN HELD TO THE LIGHT)
269. Fenton (or N'wood) Stretch Paneled Covered Candy Dish - Celeste Blue (attractive item)
270. 6" Fenton Two Flowers ftd. 6 Ruffled Sauce - Lime Green (scarce base color)
- 270A FENTON LOTUS AND POINSETTIA FTD. RUFFLED SAUCE - GREEN (EXCELLENT EXAMPLE - DARK COLOR WITH NICE IRID.)
271. 6 - 7" Fenton Lotus and Grape Ball ftd. Round Bowl - Green (scarce base color)
272. 6 1/2 - 7 1/2" Fenton Lotus and Grape Ball ftd. Round Bowl - Amy. (another scarce base color)

273. 6 1/2 - 7 1/2" Fenton Lotus and Grape Ball ftd. Round Bowl - Mari.
274. Fenton Kittens 2 sided Banana Dish - Mari. (scarce; nice color and detail)
275. Fenton Kittens 4 sided Ruffled Bowl - Mari. (scarce; desirable)
276. 6" M'burg Blackberry Wreath Round Sauce with Tight Crimped Edge - Lt. Mari. (unusual shape)
277. 6" M'burg Blackberry Wreath 6 Ruffled Sauce - Lt. Mari. (satiny finish)
278. M'burg Peacock Tail Variant Stemmed 6 Ruffled Compote - Dk. Mari. (really nice radium finish)
279. 9 1/2" M'burg Holly Whirl 6 Ruffled Bowl - Amy. (has a nice goldish radium finish)
280. **10 - 10 1/2" M'BURG PEACOCK AT THE URN LG. 6 RUFFLED BOWL - GREEN (RADIUM AND RARE - HAS BEE BUT NO BEADING; VERY DESIRABLE)**
281. **EUROPEAN POMONA 7 PC. TANKARD MARTINI SET - MARI. / FROSTED (A REALLY UNUSUAL LOOKING SET - DIFFERENT)**
282. Imperial Flute Toothpick Holder - Dk. Mari. (nice color)
283. 8 1/2" Imperial Open Rose Deep Round Bowl - Amber
284. Imperial Pansy Flat Dresser Tray - Lt. Amber (light base color)
285. **IMPERIAL WAFFLE BLOCK HANDLED FLOWER BASKET - VASELINE (1ST EXAMPLE IN THIS BASE COLOR REPORTED; REALLY, REALLY DESIRABLE GREAT ITEM; HAS SMALL, NO HARM CHIP ON BASE)**
286. 10 1/2" Imperial Taffeta Lustre Ice Cream Shaped Console Bowl - Purp. (unusual item with bright multi-colored irid.)
287. Colonial (?) Patterned Kerosene Lamp - Cranb. Flash. (scarce; nice flashed overlay)
288. Diamond Paneled Stretch Cathedral Covered 1/4 lb. Candy Jar - Celeste Blue (scarce; nice color)
289. 8 1/2" Fenton Heart and Vine 6 Ruffled Bowl - Green (satiny)
290. Pair Fenton Cornucopia Figural Candlesticks - Ice Blue (very scarce and very desirable pair; one may have small chip)
291. Fenton Orange Tree Punch Bowl and Base - Blue (scarce; satiny color and irid.)
292. **FENTON BUTTERFLY AND FERN BULBOUS HANDLED WATER PITCHER - MARI. (SCARCE ITEM; NICE COLOR AND DETAIL)**
293. **7 1/2" FENTON HORSEHEAD MEDALLION FLAT PLATE - MARI. (SCARCE; NICE COLOR AND SATINY FINISH)**
294. 8 1/2 - 8 3/4" Fenton Holly Ice Cream Shaped Bowl - Blue (nice color and irid.)
295. **N LEAF AND BEADS FTD. ROSE BOWL - ICE GREEN OPAL. (EXTREMELY RARE AND VERY DESIRABLE ITEM; GREAT OPAL. AND AN EXTREMELY RARE BASE COLOR)**
296. **10 - 12" FENTON APRIL SHOWERS STANDARD SWUNG VASE - WHITE (EXTREMELY RARE COLOR FOR THIS PATTERN NOT MANY KNOWN; SUPER IRID.)**
297. **10 1/2 - 11 1/2" FENTON STAG AND HOLLY LG. BALL FTD. 8 RUFFLED BOWL - POWDER BLUE / MARI. (VERY SCARCE BASE GLASS COLOR; UNUSUAL SATINY FINISH)**
298. **8" FENTON STAG AND HOLLY SPATULA FTD. FLARED BOWL - AMY. WITH STREAKS (ABOUT AS STRANGE AN ITEM AS I'VE SEEN; HAS STREAKS OF DARKER AMYTHEST BLEEDING THROUGHOUT - NEAT)**
299. Fenton Stippled Rays Stemmed 2 sided Sugar Whimsey - Blue (scarce shape and color)
300. **DUGAN QUILL TANKARD WATER PITCHER - DK. MARI. (RARE AND VERY DESIRABLE; PRETTY NICE DARK COLOR WITH ATTRACTIVE IRID.)**
301. Fenton Blackberry 2 Row Open Edge 6 Ruffled Hat - Amy. (super, super example - one of the best; may have a pin-head)
302. 8 1/2 - 9" Fenton Holly 6 Ruffled Bowl - Blue (nice irid.)
303. 8" Imperial Open Rose Deep 8 Ruffled Bowl - Amy. / Mari. (really unusual base color / irid. combination - super irid.)
304. Westmoreland Leaf Swirl Stemmed Ruffled Compote - Amber (scarce color)
305. **7" TALL WESTMORELAND DAISY WREATH WHIMSEY SWUNG VASE FROM BOWL - MARI. (EXTREMELY RARE VASE WHIMSEY - ONLY ONE EVER REPORTED; PERFECT AND NEAT)**
306. Westmoreland Louisa ftd. Rose Bowl - Amy. (average irid.)
307. **FENTON STRAWBERRY SCROLL BULBOUS HANDLED WATER PITCHER - BLUE (RARE AND VERY DESIRABLE ITEM; IRID. IS SILVERY / GOLD - A TOUGH ITEM)**
308. Diamond (or U.S. Glass) Plain Stretch 3 pc. Console Set with Bell Shaped Candle Holders - Celeste Blue (nice set)
309. 9 - 9 1/2" Imperial Jewels Flat Plate signed with Iron Cross - Purp. (unusual; different)
310. **11 - 12" IMPERIAL HATTIE CHOP PLATE - PURP. (VERY RARE AND VERY DESIRABLE; PERFECT WITH BRIGHT IRID. - AN EXCELLENT EXAMPLE)**
311. Imperial Grape Stemmed Wine Glass - Purp. (silvery irid.)
312. 8" Imperial Embossed Scroll Deep 8 Ruffled Bowl - Purp. (tiny flake on base but is a beaut)
313. Imperial Daisy Handled Flower Basket - Mari. (nice color)
314. Imperial Cockatoo Lg. Wall Vase - Mari.
315. **IMPERIAL OCTAGON STEMMED CORDIAL - DK. MARI. (RARE STEMMED NOVELTY; GREAT COLOR AND IRID. AND IS DEFINITELY A CORDIAL - A CUTIE)**
316. Imperial Octagon 8 pc. Wine Set - Dk. Mari. (nice, well matched set)
317. **7" TALL X 4" BASE IMPERIAL ZIPPER LOOP SMALL KEROSENE LAMP - DK. MARI. (RARE AND DESIRABLE; THESE SMALL EXAMPLES ARE DRYING UP - GETTING TOUGH!!)**
318. Imperial Fashion 7 pc. Water Set - Dk. Mari. (very attractive set with great color)
319. 12 - 13" Imperial Heavy Grape Chop Plate - Helios Green (scarce and desirable; typical helios finish)
320. 7 1/2 - 8" Imperial Heavy Grape Flat Plate - Purp. (great color and irid. a very attractive example)
321. 8 1/2" Fenton Holly Ice Cream Shape Bowl - Blue / Renninger Blue (unusual item; satiny finish with an unusual look when held to the light)
322. 9" Fenton Little Flowers Deep Flared Master Berry Bowl - Blue (nice; very attractive example)
323. Fenton Blackberry Spray 6 Ruffled Hat - Green / Mari. (odd base color)
324. (4) Fenton Dragon Tongue Light Shades - Mari. / Moonstone (nice items; selling so much each for set)
325. **9 1/2" DUGAN PODS AND POSIES LG. TRI-CORNERED BOWL - P. OPAL. (VERY RARE AND DESIRABLE SHAPE FOR THIS ITEM; HAS REAL NICE OPAL.)**
326. **6 - 6 1/2" DUGAN PETAL AND FAN PLATE WITH TIGHT CRIMPED EDGE WITH JEWEL HEART EXT. - P. OPAL. (VERY SCARCE AND DESIRABLE ITEM - NICE SIZE AND SHAPE)**
327. Dugan Stippled Petals domed 2 sided Ruffled Bowl - Lt. P. Opal. (scarce shape)
- 327A M'burg Hanging Cherries Handled Spooner - Green (satiny finish)
328. N Three Fruits 8 Ruffled Bowl with Basketweave Ext. - Purp. (satiny finish)
329. N Three Fruits Medallion Spatula ftd. 8 Ruffled Bowl with Meander Ext. - Purp. (a really nice example - sorta stretchy)
330. **SLINKY SNAKE FIGURAL NOVELTY - DARK (VERY RARE NOVELTY ITEM; ONLY THE 2ND WE'VE EVER SOLD!)**
331. Beaded Bag with Drawstring - Dark (nice item)
332. Beaded Bag with Clasp Top - Dark (nice item)
333. Beaded Necklace, (2) pairs of Earrings, etc. - Dark (selling as a lot)
334. Triplets Hatpin and Misc. Beaded Item - Dark (selling as a lot)
335. (2) Flying Bats Hatpins - Dark (selling choice - both are nice)

FOR THE RESULTS OF THIS OR ANY
BURNS AUCTION SERVICE AUCTION SEND A SASE AND \$2.00
(INCLUDE NAME OR DATE OF AUCTION) TO:

EMMA TILTON
221 N. PLUM ST. GNADENHUTTEN, OH 44629

