

BIG 8TH ANNUAL CARNIVAL GLASS NEW YEAR'S EXTRAVAGANZA Saturday, January 2, 1999 9:00 a.m.

Held Inside the Mickey Reichel Auction Center
Office: 660-882-5292 • Boonville, Missouri • Home: 660-882-5283



e-mail: mreichel@undata.com



NEW WEB SITE ON: <http://www.woodsland.com/carnivalglass> • <http://www.woodsland.com/mickey>



NO BUYERS PREMIUM

Held Inside the Mickey Reichel Auction Center

1 Mile North of I-70 on Hwy. 5, Exit 101, Boonville, Missouri • 20 Miles West of Columbia, MO on I-70

Preview Friday 12 p.m. - 6 p.m. and 7:30 a.m. - 9:00 a.m. Day of Auction

Make Reservations **EARLY** at one of these local motels:

Days Inn: 660-882-8624 • Comfort Inn: 660-882-5317 • Super 8: 660-882-2900


SPECIAL NOTE: Hospitality Room at Days Inn, Friday Evening, January 1, starting at 7:00 p.m.
Compliments of Heart of America Carnival Glass Association

Auction Consists of Rarity, Great Irid. and Variety

WRITE IN BIDS: If you are unable to attend the auction, we will be happy to accept absentee bids which must be received by THURSDAY, DECEMBER 31, 1998. Don't Delay. **FOR AUCTION PRICE RESULTS:** Send S.A.S.E and \$3.00 to 516 Third Street, Boonville, MO 65233.

PLEASE NOTE: There is a **\$5 handling charge for each successful bid which will be added to the selling price** for all write-in bids. This is in addition to the cost of postage, insurance and packing. Your write-in bid will be entered just as if you are present and bidding. **Successful bidders will be notified in 1 to 3 days by the auctioneer (so be sure to include your phone number).** Direct mail bids to Auctioneer Mickey Reichel, 516 Third Street, Boonville, MO 65233-1536. Terms: Cash or Check accepted with proper I.D. and Social Security Number and References. Announcements made day of the auction supercede all printed material. Not Responsible for Accidents or Sold Items. **No return on any items once they leave the Auction Center (No Exceptions).******

 Call for additional information: 660-882-5292 days or 660-882-5283 evenings.

 **FAX: 660-882-5292 (evening hours start FAX transmission after beep)**

 **NOTE: Read each line, Bold and Plain print. Huge Quality Selection.**

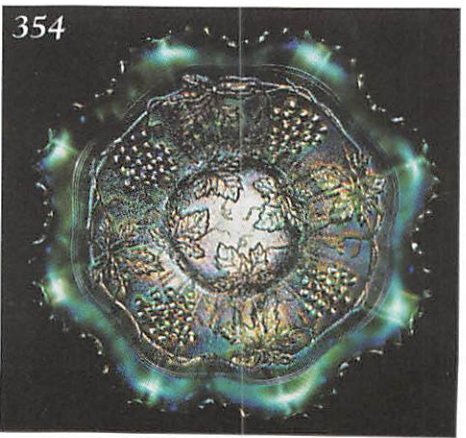
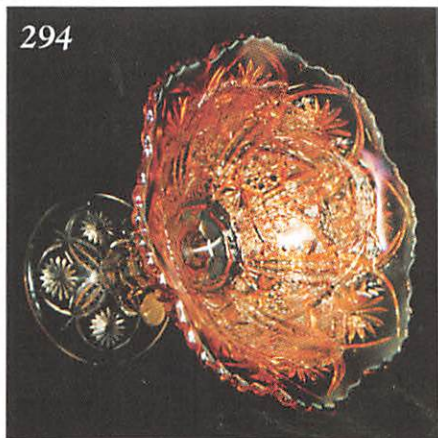
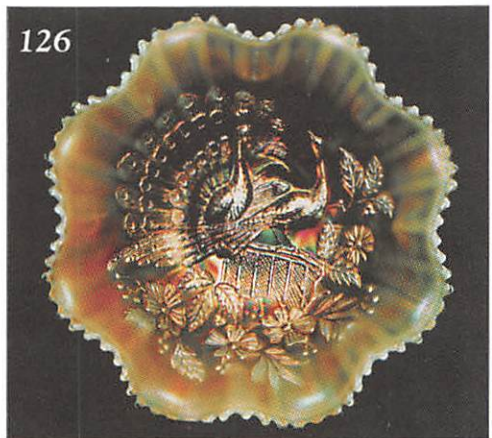
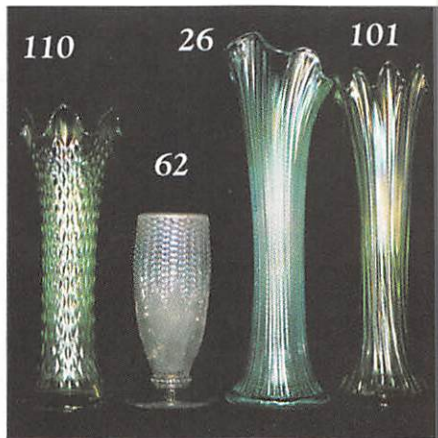
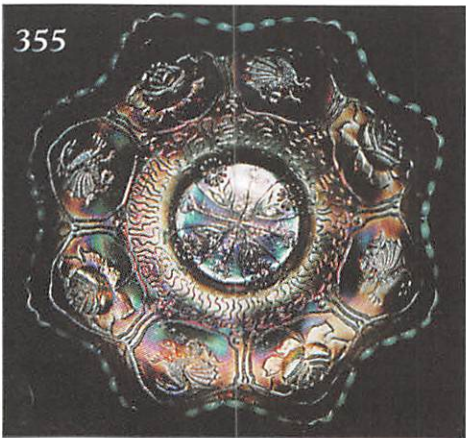
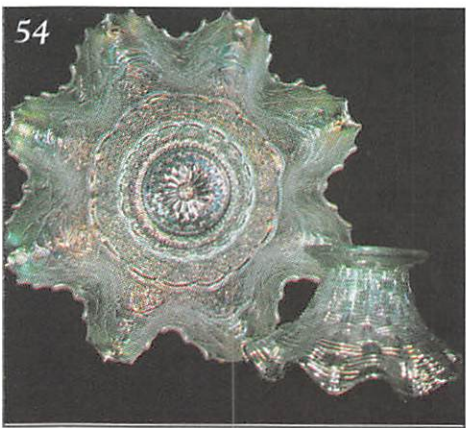
MAIL BIDS: Items are bid on in perfect condition with average or above iridescence OR as listed in the brochures. Bids will not be carried out when damage on an item has been found during the auction.

PEOPLE PRESENT AT AUCTION ARE RESPONSIBLE FOR FINDING ANY PINHEADS, WEAR, SPOTTINESS, MANUFACTURER'S DEFECTS OR ANY OTHER MINOR FLAWS, ETC.

WELCOME TO THE AUCTION

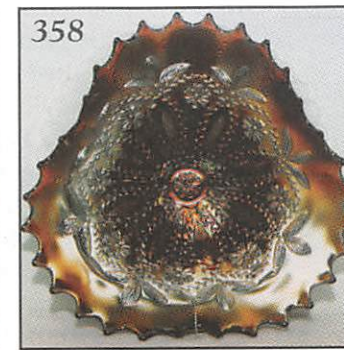
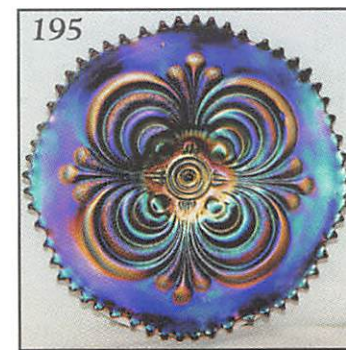
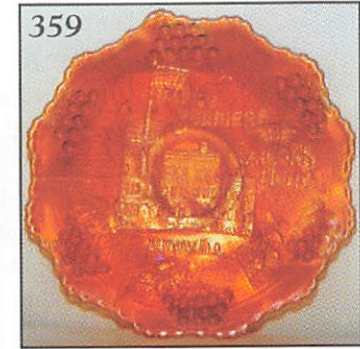
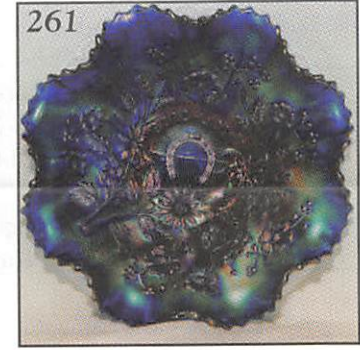
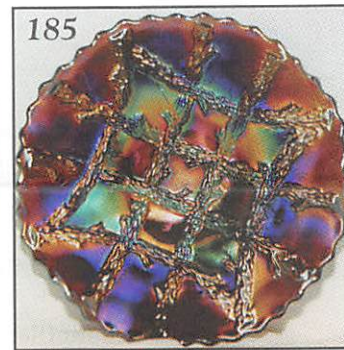
- | | |
|--|--|
| _____ 1. G - <u>N</u> Dome Ftd. Greek Key Bowl - Radium | _____ 21. A - 9" Collar Base 3 in 1 Edge Dragon & Lotus Bowl |
| _____ 2. Vas. Open Edge Basket - 2 Sides Up | _____ 22. A 6½" 8 Ruffle Flat Dugan Cherries Bowl |
| _____ 3. A - 3 in 1 Edge Fenton Holly Bowl - Scarce Shape/Color | _____ 23. G - Super 9" Deep Round Feathered Serpent Bowl |
| _____ 4. G - <u>N</u> 10" Thin Rib Vase - Scarce Star Base | _____ 24. M - Flashed 8½" Feathers & Plain Panels Vase |
| _____ 5. A - Fine Cut & Roses Ftd. Candy Dish | _____ 25. Radium M - Feather & Heart Tumbler |
| _____ 6. P - Dugan Ruffled Holly Berry Bowl | _____ 26. I.B. - 12" <u>N</u> Fine Rib Vase - Very Rare Color |
| _____ 7. Near Em. G. - <u>N</u> Grape & Cable Stippled Bon Bon - Beautiful | _____ 27. M - Ftd. Prism Vase - Super Radium - Dark |
| _____ 8. P - Acorn Burrs <u>N</u> Creamer | _____ 28. A - <u>N</u> Stippled Grape & Cable Powder Jar/Lid - Lid Chip - Super - Very Rare - Few Known |
| _____ 9. Acorn Burrs <u>N</u> Spooner - Multi Electric | _____ 29. Fantastic G - P.C.E. <u>N</u> Basket Weave Grape & Cable Bowl - Great Look |
| _____ 10. M - 7" Beaded Bullseye Vase - 6" Top - A Beauty | _____ 30. P.M. - Grape & Cable Lamp Complete - Scarce Item |
| _____ 11. M - Mlbg. 7½" 3 in 1 Edge - Rad. Blackberry Bowl | _____ 31. Dark M - <u>N</u> Grape & Cable Ftd. Centerpiece Bowl - Rare Rd. w/Points Up |
| _____ 12. Amber - Stretch #759 Candle Sticks - 7" Tall - Rare | _____ 32. M - Grape & Cable Cologne Bottle/Stopper - Radium Dandy |
| _____ 13. B - 3 in 1 Edge Captive Rose Bowl - Scarce Shape | _____ 33. P - Grape & Cable Sweet Meat Compote/Lid - Open Bubble in Base |
| _____ 14. M - ? Fine Cut Rings Celery Vase 7½" Tall | _____ 34. Super P.M. - Stippled Rib Back Grape & Cable Plate - Pinks/Blues |
| _____ 15. Topaz Vas. - Concave Diamonds Tumbler - Very Scarce | _____ 35. Super G - Flat Basket Weave Back - Grape & Cable Plate |
| _____ 16. M - Flashed Mini 2 Handled Colonial Salt Dip | _____ 36. B - Enameled Cherries & Little Flowers Bulbous Water Pitcher |
| _____ 17. W - Cosmos & Cane Tumblers - A or B | _____ 37. Reng. B - <u>N</u> Rib Back Stippled Ruffled Strawberry Bowl - Very Scarce |
| _____ 18. G - Mlbg. 6" Sauce or Plate Cosmos - Radium | |
| _____ 19. M - Mlbg. 5¼" 6 Ruffled Country Kitchen Bowl - Very Rare Item | |
| _____ 20. A - Spat. Ftd. Dragon & Lotus Low ICS. Bowl - Super - Almost a Plate | |

38. Beautiful M - 10" Basket Weave Ruffled Wild Strawberry Bowl
39. Pastel A.O. - N Peacocks Rib Back Bowl - Buffed Point - Super, So What - A Beauty
40. G - N Ftd. Raspberry Ruffled 8" Bowl - Scarce & Great
41. Radium M - Mlbg. 3 in 1 Super Trout & Fly Bowl
42. Near Em. G. - Great Grape & Cable Basket Weave Bon Bon - Wow
43. M - 9" Stretch Pink, Pumpkin, Basket Weave N Grape & Cable Plate - WOW!
44. Great M - 10³/₄" B.W. Ruffled N Grape & Cable Bowl - Also Great Irid.
45. W - N Turned in Top Daisy & Drape Vase - Blues & Pinks - Scarce Item
46. I.G. Vas. - Frosty 6¹/₂" Ruffled 2 Row Open Edge Basket - Another Winner
47. Super P.M. - P.C.E. Rib Back Stippled Strawberry Bowl - Great Pinks/Blues
48. Dark Radium M - Cut Cosmos Tumbler
49. M - 9¹/₄" Sg. 8 Ruffle Plaid Bowl - Scarce with Pink Highlights
50. Great Red - 8¹/₂" Low I.C.S. Dragon & Lotus Bowl - Pinks, Blues Highlights - Very Rare
51. Beautiful M - N Peacock at the Fountain Ftd. Fruit Bowl - Great Keeper
52. Super M - N 10³/₄" Ftd. Grape & Cable Orange Bowl - A Beauty - Lots of Irid.
53. Radium B - Orange Tree 6 Piece Punch Set - Super Example - Great Looking
54. Super Frosty - 2 Piece Persian Garden Fruit Bowl Set - Blue, Pink Highlights - Rare Set
55. W - N Rib Back Peacocks Plate - Frosty, Blues, Pinks & Golds - Pretty One
56. Near B.A. - Vineyard Tumbler - Super Multi Electrics
57. M - Radium Fisherman's Mug - Super Pinks & Blue Highlights
58. Great Amber - 10⁷/₈" Fenton Fine Rib Vase
59. Super Radium Small G - Buzz Saw - Sorry No Stopper
60. P - Ftd. 8¹/₂" Dugan Crimped Edge Cherries Bowl - Front & Back Super Multi Electric
61. Frosty W - N Peacock at the Fountain Water Pitcher - Super Blues & Pinks - WOW!
62. W - Pl. Base N Corn Vase - Super Blues, Pinks & Frosty
63. Very Scarce W - N Ftd. Wishbone Bowl - Frosty
64. P - IMP. Super Electric Blue & Purple Lustre Rose Butter Dish - Complete
65. P.O. - 9" 2 Sides Up Dugan Caroline Handled Basket - Great Rarity
66. Favorite Red - 6 Ruffle Fenton Holly Hat
67. Super Amberina - Ruffled Fenton Holly Mini Compote
68. Rare Rare A - Dugan C.R.E. - J.I.P. Daisy Web Hat - Super Item
69. Red -Base, ? Tangerine Top - Open Edge 2 Sides Up Basket - Red Tips - Glows!
70. Iridized Clear - 2 Piece Rare Frog Candy Container - Super Find
71. Super Radium A - Mlbg. 5¹/₄" Round Peacock Proof Bowl - Great
72. G - Butterfly & Blackberry Butter Dish - Base Only
73. M - Mlbg. Satin 9" 3 in 1 Edge Scarce Big Fish Bowl
74. A.O. - Ruffled Rose Show Bowl - Opal Tips on Rose
75. Red & A - Collar Base Ruffled Peacock & Grape Bowl - Dark Red
76. A - P.C.E. N Rib Back Hearts & Flowers Bowl - Multi Electric Beauty
77. P - 11¹/₂" 8 Ruffle Scarce Victorian Bowl - Great Example
78. B - 9¹/₂" Fenton Peacock & Urn Plate - Top of the Line
79. Multi. Elec. B - P.C.E. Rib Back Good Luck Bowl
80. Favorite P - Ruffled N Peacocks Bowl
81. B - 9" Ftd. I.C.S. Fan-Tail Bowl - Super Example
82. A - Radium Mlbg. 10" Peacock 6 Ruffle Bowl - Great
83. A - N Rd. Bushel Basket - Multi Electric - Great Example
84. B - N Rd. Bushel Basket - Multi Electric - Great Example
85. G - Scarce Fenton Water Lily & Cattails Ftd. Banana Bowl
86. P.M. - 13" N Mid Size Tree Trunk Vase - Radium 4³/₄" Base
87. P - 16¹/₄" Starred Base Morning Glory Funeral Vase - 7³/₄" Top
88. P - N Acorn Burrs Sugar Bowl/Lid - Multi Electric
89. Super I.B. - 9" P.C.E. Rib Back Nippon Bowl - Great Example
90. P - 11¹/₄" Garden Path Variant Chop Plate - Remember H.O.A.C.G.A. Auction
91. P - N Radium Multi Oriental Poppy Tankard Pitcher - WOW!
92. P - N Oriental Poppy Tumblers - A or B
93. M - Super Radium Scarce 8¹/₄" Flute & Cane Pitcher
94. Great I.B. - Ruffled Rib Back Hearts & Flowers Bowl
95. Gorgeous M - Sq. 8 Ruffle Coral Bowl
96. Multi Electric - 8⁵/₈" A Fanciful Plate
97. Rare G - 8 Ruffle N Rib Back Peacocks Bowl - Bug in Glass - NEAT
98. Ultra Rare G.W.T.W. Butterscotch M - Sunken Holly Hock Lamp - Sold w/Confirmation
99. B - 19" Rustic Funeral Vase - 5¹/₄" Base - 7" Top - What a Find!
100. Vas. - 17¹/₄" Ripple Marigold Overlay Funeral Vase - 4³/₄" Base - 7³/₄" Top - 1 of 2 Known
101. I.G. - N 11¹/₄" Thin Rib Vase - Rare Color
102. Deep P - 6¹/₄" Tornado Vase - Great One
103. M - 6¹/₄" Tornado Vase - Dark Top to Bottom
104. Dark P - N P.L. Base Multi Corn Vase



- _____ 105. Dark P - N Flower Base, Corn Vase - Gold/Silver Irid.
- _____ 106. Rare B - 9" Big Basket Weave Vase
- _____ 107. M - 9" Big Basket Weave Vase
- _____ 108. Rare Saph. - N 10½" Diamond Points Vase
- _____ 109. B - 10½" Multi Electric Diamond Points Vase
- _____ 110. Scarce I.G. - 10" N Diamond Points Vase
- _____ 111. Great G - N 10¼" Diamond Points Vase
- _____ 112. Super A - 10" Multi Elec. Big Basket Weave Vase
- _____ 113. Beautiful Teal - Fenton Fine Rib Vase - 9¾" - Super Find
- _____ 114. Equally Scarce 10" Powder Blue Fenton Fine Rib Vase
- _____ 115. Yellow, Vas. - 11" Fenton Fine Rib Vase - Marigold Overlay
- _____ 116. M - Flashed 15½" Vase - Pattern ? - Looks Like Heisey Thistle ? etc.
- _____ 117. Violet P - 8½" Super Electric Ripple Vase - ¾" Base - 5½" Top - The Best
- _____ 118. A - 9½" Star Base 4 Pillars Vase - Scarce Color
- _____ 119. Rare B - 8" Multi Elec. 4 Pillars Vase
- _____ 120. W - Scarce Frosty 10" Lined Lattice Vase
- _____ 121. Rare Dugan B - 10½" Pulled Loop Vase - Radium
- _____ 122. A - 10¾" Dugan Pulled Loop Vase
- _____ 123. Vas - 2 Sides Up Open Edge Basket - Great Example
- _____ 124. Rare P.O. - Collar Base 3 in 1 Edge Dragon & Lotus Bowl - Fantastic
- _____ 125. Rare Aqua - Fenton 3 in 1 Edge Holly Bowl - Beautiful Pastel Irid.
- _____ 126. A.O. - N Rib Back Peacocks Bowl - Beautiful Butterscotch Overlay
- _____ 127. Super Rare Radium Blue - Strawberry Scroll Water Pitcher - Multi Electric
- _____ 128. G - N Ruffled Rib Back Peacocks Bowl - Blues & Pinks - Some Dye Runs
- _____ 129. A - 10" Mlbg. 3 in 1 Rare Hanging Cherries Bowl
- _____ 130. B - P.C.E. Hearts & Flowers Bowl - Very Rare in Blue
- _____ 131. A - Heavy Iris Tumbler
- _____ 132. A - Mlbg. Hobnail Rose Bowl - Radium
- _____ 133. A - Mlbg. Hobnail Swirl Rose Bowl - Satin Pinks/Blues
- _____ 134. A - 11½" Hobnail Variant Vase - 4¼" Base - 5" Top - Mid Size
- _____ 135. M - Hobnail Variant 12" Vase - 4⅞" Base - 5¾" Top - Mid Size
- _____ 136. A - Mlbg. 8¾" Ruffled Ribbon Edge Holly Sprig Bowl - Radium
- _____ 137. Smoke - 10½" Rare Homestead Chop Plate
- _____ 138. M - 7¾" Horse Medallion Plate - Great Example
- _____ 139. B.A. - Basket Weave Hat Pin
- _____ 140. B.A. - Basket Flower Hat Pin - A or B
- _____ 141. B.A. - Cherries Hat Pin - A or B
- _____ 142. B.A. - Elegance Hat Pin
- _____ 143. B.A. - Elegance Variant Hat Pin
- _____ 144. B.A. - Star Center Hat Pin
- _____ 145. G - Imperial Grape Carafe - Rare Color in Green
- _____ 146. Lav. - Imperial Grape Compote - Scarce
- _____ 147. A - Near Cut Inverted Strawberry Tumbler - Multi Radium Beauty
- _____ 148. G - Inverted Strawberry Candlesticks (Pair) - Some Chipping - Very Rare Set
- _____ 149. G - Inverted Strawberry Powder Jar - Minor Lid Chip
- _____ 150. M - Dark, Super Logan Berry Imperial Vase
- _____ 151. P - Imperial Luster Rose Multi Electric Tumbler
- _____ 152. M - 7¾" Morning Glory Stick Vase
- _____ 153. P - Octagon Pitcher - Large Size - Very Rare
- _____ 154. M - 11¼" Imperial Heavy Grape Chop Plate - Great One
- _____ 155. Orange Tree Shaving Mug in Very Rare Mandarin Red - Only 2 Known ?
- _____ 156. P - Imperial 9" Ruffled Pansy Bowl - Fantastic Electric
- _____ 157. M - Mlbg. 10" 6 Ruffle Peacock at Urn Bowl
- _____ 158. M - Mlbg. Peacock Urn Proof Sauce Bowl - Rd. 5¼" - Rare Color
- _____ 159. A - 5½" Mlbg. Deep Peacock At Urn Variant Sauce - 3 Rows Beads - Rare
- _____ 160. Lav. A - 5¾" Shallow Mlbg. Peacock At Urn Variant Bowl - 3 Rows Beads - Rare
- _____ 161. G - 9" Mlbg. Radium 6" Ruffle Peacock at Urn Mystery Bowl
- _____ 162. M - 7¾" Peacock & Dahlia Plate - Rare & Nice
- _____ 163. M - N 10" Peacock at Urn Ice Bowl - Pumpkin - Super
- _____ 164. G - Mlbg. 9½" Peacocks, 3 in 1 Edge Bowl - Radium - Super Rare
- _____ 165. G - 10" Mlbg. 6 Ruffle Peacocks Bowl - Radium
- _____ 166. M - Pumpkin 7 Pc. Set - N Grape & Cable Tankard Water Set - Fantastic Find
- _____ 167. M - Super Matching Grape Arbor 7 Pc. Water Set - Super Set Also
- _____ 168. A - 9" B.W. Good Luck Plate - Great Find
- _____ 169. Rare - Pumpkin N Harvest Poppy Compote - WOW
- _____ 170. Rare - I.B. Peacock at Fountain Compote - Great Find in Pastel - Soft Silver Irid. Hi-lite
- _____ 171. P - N Memphis Punch Bowl/Base - Multi Beauty
- _____ 172. Great M - Ruffled Poppy Show Bowl - Pinks & Blues - Great
- _____ 173. M - 9¼" Spector's Dept. Store Plate - Super - One of the Best
- _____ 174. Lav. A - N Peacocks Plate - Blues, Purples & golds - Beautiful
- _____ 175. Vas. O. - Spat. Ftd. Ruffled Peacock & Grape Bowl - Beautiful Marigold Overlay
- _____ 176. P - 9" 6 Ruffle, Rare Dugan Cherries Bowl - Jeweled Heart Exterior - Super
- _____ 177. Dark M - Flat 9¼" Spat. Ftd. Two Flowers Plate - Super Radium Example - Rare Find
- _____ 178. Near Em. G. - 8 Sided N Bushel Basket - Scarce
- _____ 179. Pumpkin M - Rd. N Bushel Basket - Super Pinks & Blues
- _____ 180. Gorgeous M - N Grape & Cable Dresser Tray - Super Example

- _____ 181. M - 8 $\frac{3}{4}$ " N Ruffled Strawberry & Basket Weave Bowl - Great Example
- _____ 182. **Rare Olive Radium G - N Oriental Poppy Tankard - What a Find**
- _____ 183. G - N Oriental Poppy Tumbler
- _____ 184. Em. G - Fruits & Flowers Bon Bon - Very Pretty
- _____ 185. **P - 7" Lightly Ruffled Rare Grape Vine Lattice Plate - Multi Electric**
- _____ 186. **Dark I.G. - N Peacocks Plate - Rib Back - Frosty Pinks and Blues**
- _____ 187. P - 9" N Stippled 3 Fruits Plate - Scarce Beauty
- _____ 188. **Rare G - Butterfly & Berry Water Pitcher - Badly Cracked - Still Nice Shelf Item**
- _____ 189. **G - Butterfly & Berry Tumblers - Choice A or B**
- _____ 190. Smoke - Premium Candlestick Holders - Clear Bases - Scarce
- _____ 191. M - Estate Mug - Dark Satin
- _____ 192. M - Radium Flashed Spiral Candlestick Holders (Pr.)
- _____ 193. M - 6 $\frac{1}{4}$ " Persian Garden Plate
- _____ 194. **Ultra Rare Red - Imperial Lustre Rose Centerpiece Ftd. Bowl - Chip Back Edge - Super Find - Must for a Red Collector**
- _____ 195. **Super, Super Lav. A - 9 $\frac{1}{2}$ " Scroll Embossed Plate - Magnificent**
- _____ 196. **Very Rare Lav. A - Imperial Field Flowers Water Pitcher - Multi Electric**
- _____ 197. **P - Imperial Poinsettia Milk Pitcher - Great Little Rarity**
- _____ 198. **Ultra Rare A - 9" I.C.S. Dragon & Strawberry Bowl - Multi Irid. - Collar Base**
- _____ 199. **Rare B - 9" I.C.S. Dragon & Strawberry Bowl - Electric Irid. - Collar Base**
- _____ 200. **Equally Rare, Also Collar Based, I.C.S. Marigold Dragon & Strawberry Bowl - Super**
- _____ 201. **P - 9" Ruffled Imperial Super Electric Cobblestone Bowl - Imperial's Best**
- _____ 202. **Super Rare I.G. - 9 $\frac{3}{4}$ " N Ruffled Fruits & Flowers Bowl - Outstanding Pastel Irid.**
- _____ 203. **W.O. Lav. - Tinted Dugan Caroline 8 $\frac{3}{4}$ " Handled Basket - Very Rare**
- _____ 204. Dark M - Vineyard Water Pitcher
- _____ 205. Saph. - Base J.I.P. Open Edge Basket - Rare Color
- _____ 206. Teal - Base J.I.P. Open Edge Basket - Base Glows
- _____ 207. **Rare A - 5 $\frac{1}{2}$ " 6 Ruffle Ogden Furn. Utah Adv. Bowl - Rare Find**
- _____ 208. **Great A - 6 $\frac{1}{4}$ " 2 Sides Up Davidsons Chocolate Card Tray Plate**
- _____ 209. **A - 5 $\frac{5}{8}$ " Eat Paradise Sodas Plate - Great Adv. Find**
- _____ 210. **A - 6 $\frac{1}{4}$ " Flat Fern Brand Chocolates Plate**
- _____ 211. **A - 6 $\frac{1}{2}$ " 2 Sides Up Fern Brand Choc. Card Tray Plate**
- _____ 212. **M - Grape & Cable Pin Tray - Great Miniature**
- _____ 213. **G - Grape & Cable Pin Tray - Very Scarce Color**
- _____ 214. **Rare G - 4 $\frac{1}{4}$ " Round Ftd. Panthers Berry Bowl**
- _____ 215. **Brocaded Summer Garden Fleur-De-Lis Handled Sandwich Tray - I.G. - Not Irid.**
- _____ 216. **W - Irid - Summer Garden - Sandwich Tray with Handle**
- _____ 217. **Vas - 6 $\frac{1}{2}$ " Stretch Plate**
- _____ 218. **Vas. - 6" Ruffled Ftd. Rare Two Flowers Bowl**
- _____ 219. **B - Radium 10 $\frac{1}{2}$ " Spiralex Vase**
- _____ 220. **Super P - 9 $\frac{1}{4}$ " Flat Imperial Open Rose Plate - Spectacular Irid.**
- _____ 221. **Lav. Imperial Grape Ruffled Compote - Scarce & Radium**
- _____ 222. **Lav. - N P.C.E. Smooth Bk. Strawberry Bowl - Beautiful Irid. Bowl**
- _____ 223. **Amberina - 10" Fenton Fine Rib Vase - Super Unusual Base Color - Red Streaks - Neat**
- _____ 224. **Pastel A.O. - N Beaded Cable Rose Bowl - Pinks & Blues - A Favorite**
- _____ 225. **A.O. - N Drapery Rose Bowl - Soft Pinks, Blues, Lots of Opal) - Big Demand**
- _____ 226. **G - 8 $\frac{1}{2}$ " 3 in 1 Edge Wild Blackberry Bowl - Rare Shape - Color)**
- _____ 227. **Super B - 9" Fenton 3 in 1 Edge Autumn Acorns Bowl - Beauty**
- _____ 228. **G - 7 $\frac{1}{2}$ " Rare Stippled N Fruits & Flowers Variant Bowl - Few Known - Great Find**
- _____ 229. **A.O. - Collar Base N Stippled 3 Fruits Rib Back Bowl - A Beauty - Blue Chip Stock**
- _____ 230. **Smoke - 8" Imperial Lustre Rose Bowl - Ruffled - Scarce Color - Sleeper Color**
- _____ 231. **M - 7 $\frac{1}{2}$ " Horse Medallion Plate - Great Pinks & Blues - Great Strike**
- _____ 232. **Frosty W - 9 $\frac{1}{2}$ " Fenton Peacock & Urn Plate**
- _____ 233. **P - N 9 $\frac{3}{4}$ " 8 Ruffle Wishbone Collar Base Bowl - Super Multi Irid.**
- _____ 234. **P.M. - 9 $\frac{1}{4}$ " Leaf Chain Plate - Irid., Yellow, Pink & Blue Highlights**
- _____ 235. **M - 9 $\frac{1}{2}$ " Fenton Holly Plate - Stretch Pinks & Blues**
- _____ 236. **M - 9 $\frac{1}{4}$ " N Rose Show Plate - Lots of Pinks/Greens - Special**
- _____ 237. **W - 9 $\frac{1}{4}$ " N Rose Show Plate - Multiple Blues, Pinks**
- _____ 238. **Teal - 9" Sq. 8 Ruffle Plaid Bowl - Rare - Glows Under Blk. Light**
- _____ 239. **Red - 7 $\frac{1}{2}$ " Sq. 8 Ruffle Fenton Grape & Cable Bowl - Dark Irid.**
- _____ 240. **Super W - 10 $\frac{1}{2}$ " Low I.C.S. N Peacock at Urn Bowl - The Best**
- _____ 241. **Scarce Dk. I.G. - 9 $\frac{1}{2}$ " Deep N I.C.S. Peacock & Urn Bowl - Frosty**
- _____ 242. **Outstanding P - 9 $\frac{1}{2}$ " N I.C.S. Peacock & Urn Bowl**
- _____ 243. **P.M. - N Grape & Cable Hat Pin Holder - Many Pinks/Blues**
- _____ 244. **Amber Horehound - Collar Base Sq. Ruffled Dragon & Lotus Bowl**
- _____ 245. **P.O. 8 $\frac{1}{2}$ " Westmoreland Plate - Scales - Super**
- _____ 246. **Great P.O. - 9 $\frac{1}{4}$ " Crimped Apple Blossom Twig Bowl**
- _____ 247. **Scarce P.O. - Nautilus Creamer - 1 Side Up**
- _____ 248. **Scarce P.O. - Nautilus Sugar - 2 Sides Up**
- _____ 249. **P.O. - 7" Ftd. Dugan Crimped Cherries Nut Bowl**
- _____ 250. **P.O. - 9" 3 in 1 Crimped Double Stem Roses Bowl**



- _____ 251. P.O. - Scarce Ruffled Leaf Rays Nappy
- _____ 252. M - Ruffled Candy Ribbon Edge Fenton Holly Compote
- _____ 253. **I.B.** - 5½" **I.C.S.** **N** Peacock & Urn Bowl - Super
- _____ 254. **P** - **N** P.C.E. Smooth Back Strawberry Bowl - Super Multi Elec.
- _____ 255. **Teal** - Octagon Imperial 4½" Round Compote - Rare/w Minor Nicks - Rare Color
- _____ 256. **P** - **N** P.C.E. BW Nippon Bowl - Super Irid.
- _____ 257. **Saph.** - **N** 11" Thin Rib Vase - Beautiful Example
- _____ 258. Non Irid. - Milk Glass Amber Font Zipper Loop Finger Lamp
- _____ 259. Super **P** - **N** Ruffled Poinsettia Ftd. Bowl
- _____ 260. **Smoke Base** - 8¼" **10** Ruffle Windflower Bowl - Amethyst Overlay - **RARE**
- _____ 261. **Elec. B** - **N** Ruffled Rib Back Good Luck Bowl
- _____ 262. **Pumpkin M** - 10¼" Low **I.C.S.** Panthers Bowl - Super Irid. - 1 of a Kind Shape?
- _____ 263. **Em. G** - Collar Base **P.C.E.** Stippled 3 Fruits Bowl - **B.W. Ext.**
- _____ 264. **Dark I.B.** - ? - **Saph.** Oriental Poppy Tankard Frosty - The Works
- _____ 265. **I.B.** - **N** Oriental Poppy Tumbler - Light Frosty
- _____ 266. **P.O.** - **C.R.E.** Ski Star & Compass Banana Bowl - Rare
- _____ 267. **Amberina** - Chesterfield Stretchy Sherbet
- _____ 268. **Em. G** - **Ultra Rare Ruffled Mikado Lg. Compote** - **SUPER Color** - Super Find
- _____ 269. **P** - **N** Peacock at the Fountain Water Pitcher - Golds & Purples
- _____ 270. **M** - Radium Orange Tree Powder Jar/Lid
- _____ 271. **Rare B** - **10"** Ruffled Ftd. Water Lily Bowl - Great
- _____ 272. **A** - 6½" Smooth Back Wishbone and Spades Flat Plate - Cutie
- _____ 273. **P** - **N** 10½" Ruffled Ftd. Grape & Cable Orange Bowl
- _____ 274. **G** - **Mlbg.** 7½" **Blackberry Wreath Plate/Bowl ?** - 1¼" Off Table - Rare Shape
- _____ 275. **G** - **Mlbg.** Ruffled Primrose Bowl - with Radium Blues
- _____ 276. **A** - **Mlbg.** Ruffled Primrose Bowl - Great Radium
- _____ 277. **Reng. B** - **Grape & Cable Banded Banana Bowl** - Rare - No Stippling
- _____ 278. **A** - Great Radium/Satin, Multi Floral and Grape Fenton Water Pitcher
- _____ 279. **Olive G** - **Imperial Field Flowers Water Pitcher** - Silver Irid.
- _____ 280. **P.O.** - 9¼" Low Ruffled Apple Blossoms Twigs Plate
- _____ 281. **Super A** - **Deep, Tight, C.R.E.** 10 Mums Bowl - Super Irid.
- _____ 282. **M** - Collar Base **N** Ruffled Rib Back Stippled 3 Fruits Bowl
- _____ 283. **A** - **N** Grape & Cable Whimsey Compote - Flat Top - From Sweet Meat
- _____ 284. **G** - 9" Leaf Chain Plate - Satin Silver Irid.
- _____ 285. **B** - Fentonia Tumbler - Scarce
- _____ 286. **G** - **N** Acorn Burr Tumbler
- _____ 287. **B** - **Lily of Valley RARE** Tumbler - Radium
- _____ 288. **M** - **Mlbg.** Radium, Ruffle, 3 in 1 Blackberry Wreath Compote
- _____ 289. **Horehound** - **N** Peacocks Rib Back Plate - Rare Color
- _____ 290. **I.G.** - **N** Plain Back Peacocks Plate
- _____ 291. **B** - **N** Rib Back Peacocks Plate - Super Electric Example
- _____ 292. **P.M.** - 6¼" Pinched Swirl Vase
- _____ 293. **P** - Scarce **N** Poppy Show Plate - Blues, Purples, Golds
- _____ 294. **M** - **Mlbg.** Flared Poppy Compote - Rare - Nice
- _____ 295. **M** - **Quill Tumbler** - Rare - Small Base Chip - Super Example
- _____ 296. **B** - **N** Rose Show Plate - Multi Electric Blues, Purples
- _____ 297. **B** - **Roseshow Bowl** - Some Mfg. Splits in Ruffles - Fantastic Color
- _____ 298. **Blue Opal** - **Lge. Westmoreland Shell Dish** - 1 of 2 Known
- _____ 299. **A** - **Lge. Westmoreland Shell Dish**
- _____ 300. **P.O.** **Lge. Westmoreland Shell Dish** - 1 of 3 Known
- _____ 301. **Amber** - **Lge. Westmoreland Shell Dish** - Rare Color
- _____ 302. **Aqua** - **Lge. Westmoreland Shell Dish** - A or B Choice
- _____ 303. **Aqua** - **Sm. Westmoreland Shell Dish**
- _____ 304. **A** - **Sm. Westmoreland Shell Dish** - Choice A or B
- _____ 305. **Six Sided Candlesticks, Not Carnival, Rare, Crystal, Pair**
- _____ 306. **Smoke** - **11"** Ruffled Ball Ftd. Rare Stag & Holly Bowl
- _____ 307. **Vas.** **11"** Ruffled Ball Ftd. Rare Stag & Holly Bowl - **M** Overlay
- _____ 308. **B** - **10½"** **I.C.S.** Ball Ftd. Stag & Holly Bowl - Super Multi Electric
- _____ 309. **Great Radium M** - **Stork & Rushes Lattice Band, Vt.** - Tumbler
- _____ 310. **A** - 3 in 1 Edge 10 Mums Bowl - A Beauty
- _____ 311. **B** - 7½" **N** Thin Rib Vase - 3½" Base - 4½" Top - Rare
- _____ 312. **A** - Stippled Rib Back **N** 3 Fruits Plate
- _____ 313. **G** - **Mlbg.** 11½" **Radium Tulip & Scroll Vase**
- _____ 314. **M** - **Vineyard 4 Piece Water Set** - 1 Tumbler - Base Chip - Great Color
- _____ 315. **P.O.** - 9½" **Collar Base Rare** Wishbone & Spades Ruffled Bowl - Few Known
- _____ 316. **M** - **Constellation Ruffled Compote** - Super Pinks/Blues - Rare Find
- _____ 317. **Ultra Rare Red** - **Slag, Lotus & Grape Bon Bon**
- _____ 318. **Red** - **Collar Base, Peacock & Grape Bowl** - ½" Chip Behind 1 Point
- _____ 319. **RARE** **Red Slag 6½"** Round Fenton Acorn Nut Bowl - Dark Irid.
- _____ 320. **Deep Red** - **C.R.E., J.I.P.** Blackberry Spray Hat
- _____ 321. **Rare A** - **N** Stippled Basket of Roses Bon Bon
- _____ 322. **M** - **Horse Medallion Rose Bowl** - Scarce
- _____ 323. **Em. G** - **8 Ruffle Orange Tree Bowl with Trunk**

- _____ 324. Em. G. - 6 Ruffle Orange Tree Bowl with Trunk
- _____ 325. M - 8" I.C.S. Orange Tree Bowl with Trunk
- _____ 326. Scarce A - Mlbg. 6½" Radium Tri Corner Holly Sprig Bowl - Neat Shape
- _____ 327. G - Mlbg. Radium 3 in 1 Ruffled Holly Sprig Bowl
- _____ 328. B - 9" 8 Ruffle Featherstitch Bowl - Underrated Pattern
- _____ 329. M - Mlbg. 10" Radium Peacock Bowl
- _____ 330. Scarce M - Wine & Roses Cider Pitcher
- _____ 331. M - Raspberry Milk Pitcher - Super Pinks/Blues
- _____ 332. Fantastic B - 19½" Rustic Funeral Vase - 5⅞" Base - 8¾" Top - Super Looker
- _____ 333. Aqua - 13" Ripple Swung Vase - Scarce Beauty
- _____ 334. RARE A - 6½" Mlbg. Peacock VT. Bowl - 3 Rows of Beads - 1 Known ? - Ruffled
- _____ 335. B.A. - 9½" Australian 16 Ruffle Swan Bowl
- _____ 336. A - Mlbg. 10½" Ruffled Super Satin Sea Weed Bowl - Very Scarce Pattern
- _____ 337. Pumpkin M - N Ruffled Nippon Bowl - Scarce BW Ext.
- _____ 338. Elec. B - N Stippled Rib Back 3 Fruits Plate
- _____ 339. P - 8¼" Lightly Turned Up Round Up Plate - Very Scarce
- _____ 340. Great M - 9¼" Orange Tree Plate with Trunk - A Beauty
- _____ 341. G - 9¼" N Ruffled Wild Strawberry Bowl - Scarce Color
- _____ 342. P - 7½" P.C.E. Collar Base Super Multi Electric Wishbone Bowl
- _____ 343. P - N Grape & Cable 5 Piece Water Set
- _____ 344. P - 8½" Ruffled Imp. Grape Bowl - Electric Irid.
- _____ 345. Lav. A - 11¼" Imp. Heavy Grape Chop Plate - Radium Silver - Pink Highlights
- _____ 346. A - 11¼" Imp. Heavy Grape Chop Plate
- _____ 347. Rare - P.M. N 10½" Stippled Ruffled Peacock & Urn Bowl
- _____ 348. Scarce Dugan B - Flat 9" Round Up Plate
- _____ 349. P - Elec. Deep 8" Acanthus Bowl
- _____ 350. Radium Elec. P - Imp. Ruffled Star of David Bowl
- _____ 351. P.M. - Stippled Ruffled Rib Back Good Luck Bowl - Pinks/Blues
- _____ 352. Smoke Fabulous - 9¼" Shell Plate - Pastel Irid.
- _____ 353. A - N Grape & Cable Tankard Tumblers - Choice A or B
- _____ 354. Ultra Rare N Saph. - Ruffled Stippled Grape & Cable Bowl - Saph. Irid.
- _____ 355. Equally Rare A.O. - Collar Base Dragon & Lotus Bowl
- _____ 356. P - N 10½" Tree Trunk Vase
- _____ 357. Reng. B - Rose Show Vt. Plate - Super Rarity
- _____ 358. A - N Rare Tri-Corner, Lovely Ftd. Bowl - Few Known
- _____ 359. M - 8" Illinois Soldiers & Sailors Plate - A Beauty
- _____ 360. Great M - Ruffled Concord Bowl
- _____ 361. Great G - Ruffled Concord Bowl
- _____ 362. M - First Offered Spat. Ftd. 9" Dragon & Lotus Plate - WOW - RARE - RARE

- _____ 363. Rare G - 9½" Lotus & Grape Plate
- _____ 364. Rare Saph. - Fruits & Flowers Bon Bon - Few Known
- _____ 365. A - Grand Thistle Water Pitcher - 1st I've Seen
- _____ 366. G - Omnibus Water Pitcher - Round - 1 of a Kind ?
- _____ 367. M - Radium 8¼" Rising Sun Pitcher - Beauty
- _____ 368. M - Rising Sun Dark Tumbler
- _____ 369. M - Rising Sun Juice Tumbler - Rare Size
- _____ 370. M - Omnibus Tumbler - Dark
- _____ 371. B - Grand Thistle Tumbler - Rare - Sm. Base Nick
- _____ 372. M - 1950s Flashed Dish - ? Pattern
- _____ 373. M - Flashed Butter Dish - ? Pattern
- _____ 374. Great M - N Peacock at Fountain Butter Dish
- _____ 375. P - N Peacock at Fountain Sugar Bowl/Lid
- _____ 376. P - N Peacock at Fountain Cream Pitcher
- _____ 377. P.M. - Mlbg. 10¾" Radium Hobnail Swirl Vase - Beauty
- _____ 378. P - 11" Spiralex Vase - Radium Electric
- _____ 379. P - 13½" Target Vase - Radium Electric
- _____ 380. Teal - Imp. Loganberry Vase - Glows Under Black Light
- _____ 381. A.O. - Contemporary 10" C.R.E. Farmyard Bowl
- _____ 382. Choice of 12 1965 Womans Day Magazine - Carn. Issue

Approximately 50 pieces sold at end of Auction not included.



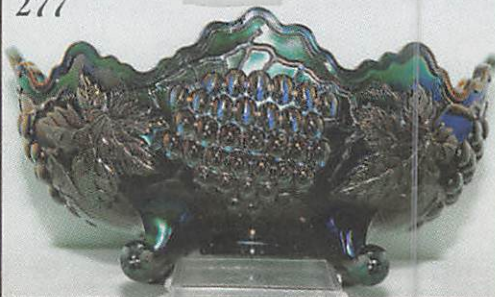
If you haven't been to Boonville, Missouri and attended a Mickey Reichel Auction, I'm extending a special invitation to one of our very best yet.

Thank You, Mickey

166



277



167



177



264



182

91



MICKEY REICHEL
ANTIQUE & AUCTION, L.C.
 516 THIRD STREET
 BOONVILLE, MO 65233-1536



FIRST CLASS MAIL



98



100



SPECIAL INVITATION TO:

