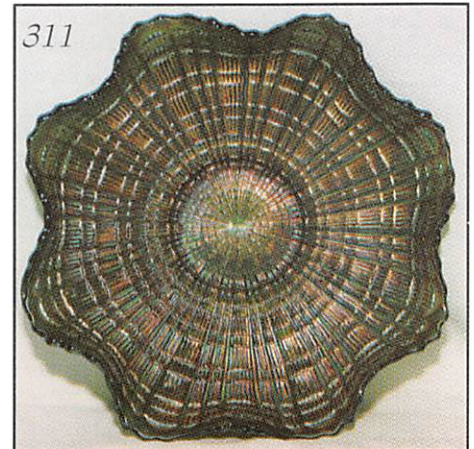
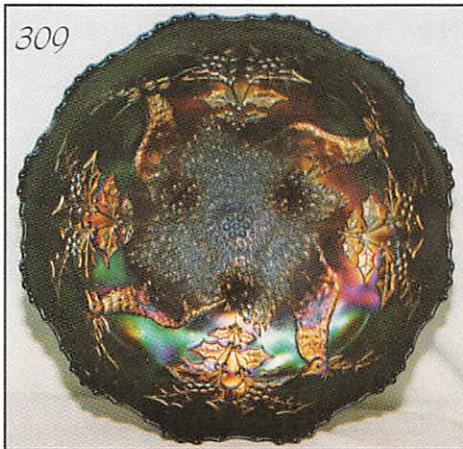
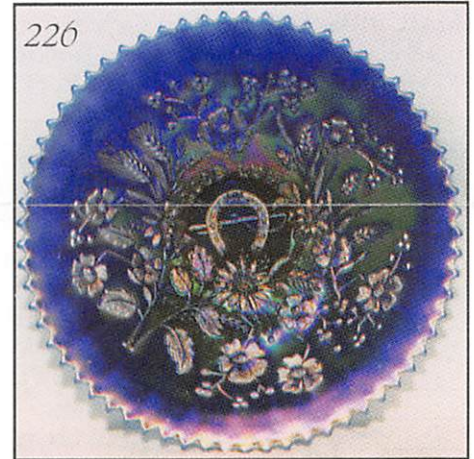
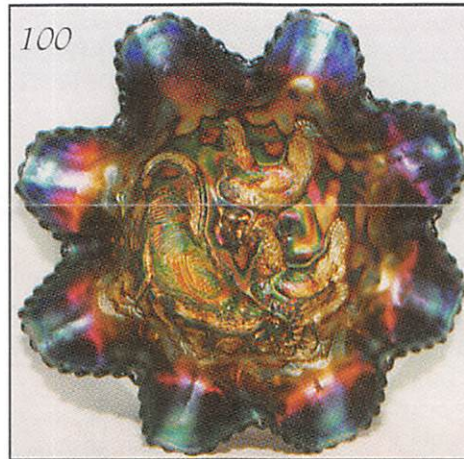
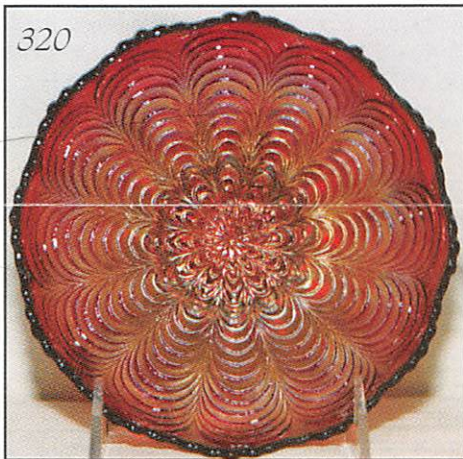
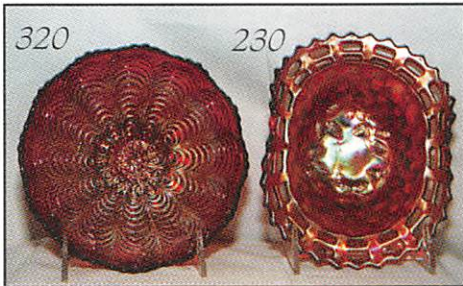


# BRITT



## CARNIVAL GLASS AUCTION

Saturday, November 7, 1998 9:00 A.M.



Held Inside the Mickey Reichel Auction Center  
Office: 660-882-5292 • Boonville, Missouri • Home: 660-882-5283



e-mail: [mreichel@undata.com](mailto:mreichel@undata.com)



See Mickey Reichel Auction Web Site on: [http://www.woodsland.com/woodsland/carnival\\_glass](http://www.woodsland.com/woodsland/carnival_glass)

# NO BUYERS PREMIUM

## Held Inside the Mickey Reichel Auction Center

1 Mile North of I-70 on Hwy. 5, Exit 101, Boonville, Missouri • 20 Miles West of Columbia, MO on I-70

Preview Friday 12 p.m. - 6 p.m. and 7:30 a.m. - 9:00 a.m. Day of Auction

Make Reservations **EARLY** at one of these local motels:


Days Inn: 660-882-8624 • Comfort Inn: 660-882-5317 • Super 8: 660-882-2900

### Auction Consists of Rarity, Great Irid. and Variety


**WRITE IN BIDS:** If you are unable to attend the auction, we will be happy to accept absentee bids which must be received by THURSDAY, NOVEMBER 5, 1998. Don't Delay. **FOR AUCTION PRICE RESULTS:** Send S.A.S.E and \$3.00 to 516 Third Street, Boonville, MO 65233.

### THE JOHN AND LUCILLE BRITT COLLECTION OF KANSAS

**PLEASE NOTE:** There is a \$5 handling charge for each successful bid which will be added to the selling price for all write-in bids. This is in addition to the cost of postage, insurance and packing. Your write-in bid will be entered just as if you are present and bidding. **Successful bidders will be notified in 1 to 3 days by the auctioneer (so be sure to include your phone number).** Direct mail bids to Auctioneer Mickey Reichel, 516 Third Street, Boonville, MO 65233-1536. Terms: Cash or Check accepted with proper I.D. and Social Security Number and References. Announcements made day of the auction supercede all printed material. Not Responsible for Accidents or Sold Items. **No return on any items once they leave the Auction Center (No Exceptions).\*\*\*\***

 **Call for additional information: 660-882-5292 days or 660-882-5283 evenings.**

**FAX: 660-882-5292 (evening hours start FAX transmission after beep)**

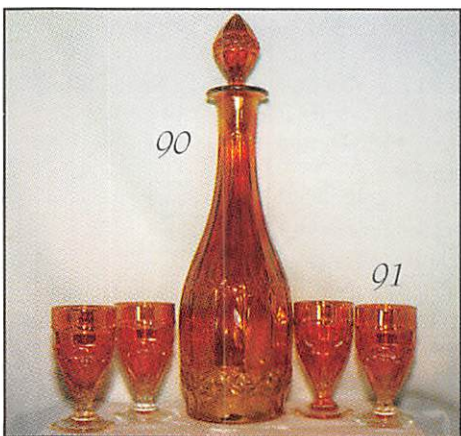
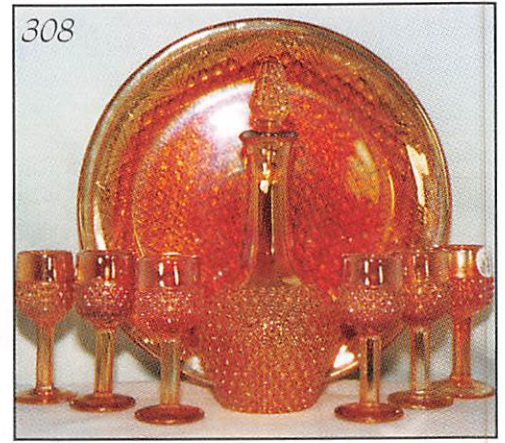
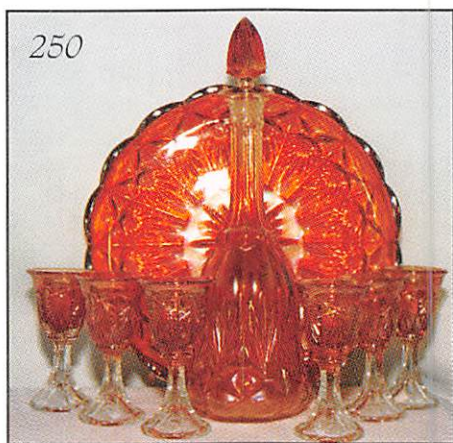
 **NOTE: Read each line, Bold and Plain print. Huge Quality Selection.**

**MAIL BIDS:** Items are bid on in perfect condition with average or above iridescence OR as listed in the brochures. Bids will not be carried out when damage on an item has been found during the auction. **PEOPLE PRESENT AT AUCTION ARE RESPONSIBLE FOR FINDING ANY PINHEADS, WEAR, SPOTTINESS, MANUFACTURER'S DEFECTS OR ANY OTHER MINOR FLAWS, ETC.**

### WELCOME TO THE AUCTION

- |  |  |
|--|--|
| _____ 1. B - Butterfly & Berry Tumbler - Great                         | _____ 30. G - MLBG. Peacock Tail VT Ruffled Compote - Rare                       |
| _____ 2. B - Floral & Grape Fenton Tumbler - Extra Nice                | _____ 31. M - <u>N</u> Harvest Poppy Compote - Rarity                            |
| _____ 3. M - Enameled Iris w/Prism Band Tumbler                        | _____ 32. B - Hearts & Flowers Compote   |
| _____ 4. M - Flashed Portland Tumbler - Rare                           | _____ 33. M - Imperial Hobstar Flower, Ruffled Compote                           |
| _____ 5. P - <u>N</u> Raspberry Tumbler - Rib. Int.                    | _____ 34. <b>Smokey B - Base - <u>N</u> David &amp; Bows Ruffled Bowl</b>        |
| _____ 6. M - Flashed Wide Panel Vt. #1 Tumbler - Rare                  | _____ 35. Smoke - Star Medallion Milk Pitcher - A Beauty                         |
| _____ 7. M - Tree of Life Tumbler - Very Scarce - Radium               | _____ 36. P.O. - Dugan Cherries Ftd. Banana Shape Ruffled Bowl - Scarce          |
| _____ 8. B - Ground Enameled Cherries Tumbler                          | _____ 37. B - Flowering Dill Ruffled Hat Shaped Bowl                             |
| _____ 9. M - Enameled Silver Queen Tumbler                             | _____ 38. G - Ruffled Ribbon Tie Bowl  |
| _____ 10. Singing Birds Tumbler  | _____ 39. <b>Powder B - 3 in 1 Ribbon Tie Bowl - Rare Color</b>                  |
| _____ 11. M - Lattice & Daisy Tumbler                                  | _____ 40. P - <u>N</u> Grape & Cable Sweet Meat Compote - Complete               |
| _____ 12. M - Very Rare Block Panels Tumbler - Flashed                 | _____ 41. <b>Clam - Ripple 11 1/2" Beautiful Vase - Scarce</b>                   |
| _____ 13. G - Grape & Gothic Arches Tumbler                            | _____ 42. Smoke - Ripple 12 1/2" Beautiful Vase - Scarce                         |
| _____ 14. W - Rare Palm Beach Tumbler - Frosty                         | _____ 43. P - Ripple 12" Radium Elec. Vase                                       |
| _____ 15. P - Imperial Windmill Tumbler                                | _____ 44. <b>G - 6" Ripple Vase - Rare Size</b>                                  |
| _____ 16. HA - Scarce Cosmos & Cane Tumbler                            | _____ 45. M - 14" Ripple Vase - 4 in. Base - 5 1/4" Top                          |
| _____ 17. M - Enameled Radiance Tumbler - Rare                         | _____ 46. G - 14 1/2" Ripple Vase - 4" Base - 6 1/4" Top - Scarce Size           |
| _____ 18. M - Diamonds & Daisy Cut Tumbler - Scarce                    | _____ 47. <b>P - 8 1/2" Rippled Vase - 3 3/8" Base - 1/4" Top - Super Radium</b> |
| _____ 19. M - Rare Buzz Saw & File Tumbler                             | _____ 48. Amber - 11 1/2" Swung Ripple Vase - Scarce Color - Radium              |
| _____ 20. M - Rare Buzz Saw & File Juice Glass                         | _____ 49. P - 11" Beaded Bulls Eye Vase - Very Pretty                            |
| _____ 21. B - God & Home Tumbler                                       | _____ 50. P - 11 1/2" Free Fold Vase - Very Pretty - Beauty                      |
| _____ 22. M - Flashed #49ers Tumbler 3 1/2" Tall                       | _____ 51. M - 5" Morning Glory Mini Vase - Dark                                  |
| _____ 23. Cherry Mash Tumbler  | _____ 52. M - 5 3/4" Morning Glory Mini Vase - Dark                              |
| _____ 24. <b>Pearlized - Custard Grape &amp; Gothic Archer Tumbler</b> | _____ 53. A - 10 1/2" MLBG. Bulls Eye & Loop Radium Vase - Top Flawed            |
| _____ 25. M - Fine Cut Flower Compote - Ruffled                        | _____ 54. M - <b>Very Rare American Fostoria 6" Radium Vase - Flashed</b>        |
| _____ 26. M - Inverted Feather Parfait Compote - A or B Choice         | _____ 55. M - Flashed Americana Fostoria Rose Bowl - Very Rare                   |
| _____ 27. <b>G - Ruffled Fenton Holly Compote</b>                      | _____ 56. M - Flashed Americana Fostoria Cream & Sugar Set                       |
| _____ 28. Pinkish - Goblet Shaped Fenton Holly Compote                 | _____ 57. <b>M - Lighting Flower Nappy - Dark and Scarce</b>                     |
| _____ 29. M - Diamond & Prism Square English Compote - Very Scarce     | _____ 58. Lav. A - Pansy Nappy - Multi Electric                                  |

59. G - Pansy Nappy  
 60. P - Pansy Nappy - Multi Electric  
 61. Teal - Pansy Nappy with Silver Ind. - Scarce Color  
 62. G - Blackberry Banded Hat Shape Ruffled Bowl - Rare Color  
 63. **A - Fenton Plain Coin Dot Rare 6" Rose Bowl**  
 64. M - Stippled Coin Dot 4½" Rose Bowl  
 65. A - Spat. Ftd. Ruffled 8" Chrysanthemum Bowl  
 66. M - 9" Ruffled Square Shape Collar Base Chrysanthemum Bowl - Dark  
 67. M - Octagon Decanter w/Stopper  
 68. G - Spat. Ftd. Ruffled Sunflower Meander Bowl  
 69. M - Three in 1 Pattern Very Rare Rose Bowl - 4½" dia. Opening  
 70. Smoke - 6½" I.C.S. Three in 1 Pattern Bowl - Very Pretty Pastel  
 71. M - Wreath of Roses Rose Bowl  
 72. **M - Tri-Cornered Wreath of Roses Whimsey Rose Bowl - Rare**  
 73. Amber - Ruffled Imperial Pansy Pickle Dish  
 74. G - Ruffled Imperial Pansy Pickle Dish  
 75. P - 8¾" 8 Ruffle Pansy Bowl - Multi Electric  
 76. Lav. - 9½" Low Ruffle Pansy Plate - Marigold Overlay - Irid.  
 77. **G - Collarbase Ruffled Dragon & Lotus Bowl - Great One**  
 78. **Clam - 9" ICS Imperial Hobstar & Arches Bowl - Rare Shape and Color**  
 79. B - 8½" Persian Medallion Bowl - Scarce Shape  
 80. **A - 10" Ruffled MLBG. Peacock Bowl - Radium Beauty**  
 81. W - 6¼" Persian Garden Plate - Pod of Pearls Exterior - Frosty  
 82. **G - 6" Tri-Corner Fenton Peacock Tail Plate - Scarce**  
 83. G - MLBG. 6" Cosmos Plate - Slightly Turned Up - Pretty Example  
 84. **M - 6¼" Radium Imp. Star & File Plate - Rare**  
 85. P - 6½" Wishbone & Spades Plate - Smooth Exterior  
 86. **M - 6½" Rare Radium Fleur-De-Lis Plate - Beauty**  
 87. P - N 6¼" Grape & Cable B.W. Ext. Plate - Multi Elec.  
 88. **M - Pineapple & Fan Decanter w/Stopper - Very Rare - 1 Known At This Time**  
 89. **M - Pineapple & Fan Wine Glass - Very Rare Find**  
 90. **M - Band of Stars Decanter - Also Rare**  
 91. **M - Band of Stars Wine Glasses - Choice of 4**  
 92. **B - Fruit Band Decanter - Few Known**  
 93. **M - Fruit Band Decanter - Few Known**  
 94. **M - 9¼" Star & Fan Vase - From Brockwitz**  
 95. P - 5¾" Dugan Cherries Ruffled Sauce - Jeweled Heart Ext.  
 96. M - Grape & Cable Whimsey Nappy from Punch Cup  
 97. A - Ftd. 5¾" Ruffle Water Lily Sauce Bowl  
 98. Clam - 10" Imp. Waffle Block Handled Basket  
 99. M - English Shooting Star Creamer  
 100. P - Dugan 8 Ruffle Farmyard Bowl - Great Example  
 101. **G - 8" Grape & Cable Fenton Ball Ftd. Round Bowl - Great Irid.**  
 102. M - 7½" Grape & Cable Fenton Ball Ftd. Round Bowl - Nice Example  
 103. **G - 7¼" Spat. Ftd. I.C.S. Grape & Cable Bowl - Fenton**  
 104. A - 7¾" Ball Ftd. Sq. 8 Ruffle Grape & Cable Fenton Bowl  
 105. M - 8" Spat. Ftd. 8 Ruffle Grape & Cable Fenton Bowl  
 106. **Vas. - 7¼" Ball Ftd. Round Fenton Grape & Cable Bowl - Rare**  
 107. M - 9" Ruffled Fenton Holly Bowl  
 108. G - 9" Ruffled Fenton Holly Bowl  
 109. Deep Blue - 7" Collar Base, 6 Ruffle Fenton Vintage Bowl  
 110. P.O. - Collar Base 8¾" Peacock & Grape Bowl - Rare Color - Epoxy on Edge - Still A Rare Beauty  
 111. M - 6 Ruffle Cosmos Variant Bowl  
 112. M - 7¼" Spat. Ftd. 8 Ruffle Dragon & Lotus Bowl  
 113. **M - 9¼" C.R.E. Heat & Vine Bowl - Great Example**  
 114. M - 10" Ball Ftd. Ruffle Water Lily Bowl - Very Pretty  
 115. **Dark M - 8¾" Collar Base Sq. 8 Ruffled Peacock & Grape Bowl - Extra Nice**  
 116. A - 9" Collar Base 8 Ruffle Peacock & Grape Bowl - Beautiful Irid.  
 117. M - 8" I.C.S. Collar Base Peacock & Grape Bowl - Scarce - 2 Sharp Points  
 118. **A - Fantastic 9¼" Collar Base 3 in 1 Edge Peacock & Grape Bowl**  
 119. G - 9" Collar Base Sq. 8 Ruffle Peacock & Grape Bowl  
 120. G - 7½" Spat. Ftd. 8 Ruffle Peacock & Grape Bowl - Plain Ext.  
 121. A - 7½" Spat. Ftd. 8 Ruffle Peacock & Grape Bowl - Plain Ext.  
 122. **Teal Green - 8¾" Spat. Ftd. Peacock & Grape Plate - Glows Under Black Light**  
 123. M - 8" Ruffle Ftd. N Blackberry Bowl  
 124. P - N 8¾" P.C.E. Strawberry Bowl - B.W. Exterior  
 125. P - N 8¾" P.C.E. Grape & Cable - B.W. Exterior  
 126. **M - Fisherman Mug - Radium Pink & Blue Hi-lites**  
 127. B.A. - 5¼" Ski-Star and Compass 8 Ruffle Bowl  
 128. M - Vintage Powder Jar w/Lid - Very Desirable  
 129. **M - Grape & Cable Cologne Bowl - Radium & Nice**  
 130. M - 9" 3 in 1 Fenton Vintage Bowl - Scarce Shape  
 131. G - 8¾" 3 in 1 Fenton Vintage Bowl - Scarce Shape and Color  
 132. **Aqua - 7½" Fenton 8 Ruffle Grape & Cable Collar Base Bowl - Rare Color**  
 133. **Vas. - 7" I.C.S. Fenton Acorn Bowl - Silver Radium Irid.**  
 134. A - 7" I.C.S. Fenton Acorn Bowl - Silver Irid.  
 135. M - 7¾" Ruffled Fenton Acorn Bowl  
 136. P.M. - N Fruits & Flowers Bon Bon - Light  
 137. P - N Fruits & Flowers Bon Bon - Nice One  
 138. Elec. B - Highlights Fruits & Flowers Bon Bon - Very Pretty  
 139. **Vas. - Question Mark - Dugan Stemmed Bon Bon**  
 140. **I.B. - Ruffled Embroidered Mums Bowl - Pinks and Blues**  
 141. **Moonstone - Westmoreland 8½" 6 Ruffle Scales Bowl**  
 142. M - Fenton Holly C.R.E. Ruffled Compote  
 143. A - Singing Birds N Mug  
 144. **M - 11", 6 Ruffle Moonprint Bowl - Rare Pattern**  
 145. A - 9" Spat. Ftd. Fenton Grape & Cable Plate  
 146. **G - 9" Spat. Ftd. Fenton Grape & Cable Plate - Great Example**  
 147. A - 8" Ruffled Dugan Holly Berry Bowl  
 148. M - Ruffled Sunflower Meander Bowl  
 149. M - 6 Ruffle Pony Bowl - Satin  
 150. P - N 8 Ruffle Wishbone Bowl - Hot Pattern  
 151. **P - Super Grape Vine Lattice Tumbler - Rare**  
 152. **M - Harvest Flower Tumbler - Scarce and Nice**  
 153. **W - Floral and Grape Dugan Tumbler - Scarce Color**



154. M - Imperial Grape Tumbler - Radium
155. B - Rambler Rose Tumbler - Very Pretty
156. M - Australian Daisy Tumbler - Extremely Rare
157. P - Imperial Grape Tumbler - Multi Electric
158. M - Radium U.S. Glass Field Thistle Pattern - Super Example
159. B - Fentonia Tumbler - Scarce
160. P - N Acorn Burrs Tumbler - Everyone's Favorite
161. G - Tiger Lily Tumbler - Not Helious - Super Example
162. G - Very Rare Northwood Flute Tumbler - Radium
163. W - N Peach & Cable Tumbler - Frosty w/Light Gold
164. M - Scarce N Cherry & Cable Tumbler
165. M - Beaded Shell Tumbler - Pretty Example
166. P.M. - Flashed Enameled Beaded Floral Band Tumbler - Rare
167. M - N Interior Poinsettia Tumbler - Also Very Scarce
168. W - Rare Orange Tree Tumbler - Blue & Pink Highlights
169. A - 9" Imp. Stippled Open Rose Plate - Pinks, Purples, Gold
170. M - Scarce 9" Fenton Beaded Stars Collar Base Plate
171. B - Fenton Stippled Rays Bon Bon - Divided/4 Sections
172. B - Lotus & Grape Bon Bon
173. P.O. - 7½" C.R.E. Dugan Bells & Beads Ruffled Bowl
174. A - Scarce Stork & Rushes Mug - Lattice Band Top
175. P.O. - 10¾" 8 Ruffle Ski Star & Compass Bowl - Scarce Shape
176. M - Flashed 8½" Handled Basket - Heisey Colonial - Pat. ?
177. M - Sowerby's Covered Hen/Chickens Dish with Paper Label
178. M - N 11" 8 Ruffle Collar Base Bowl - Grape & Cable - Basket Weave Exterior
179. Persian Blue - Jeanette Glass - Large Butterfly Dish
180. M - Imp. Optic & Buttons 5½" Rose Bowl
181. M - Intaglio Daisy Rose Bowl - 7" Dia. - English
182. M - Jacobs Ladder Variant (US Glass) 5½" Rose Bowl
183. M - Palm Beach Rose Bowl - Tri-Corner Opening - Rare
184. M - Horse Medallion Ftd. Rose Bowl
185. M - Ball Ftd. Lotus & Grape Rose Bowl - Rare Find
186. M - Imp. Diamond Block Rose Bowl - 3½" Dia.
187. B - 8" Round Head Dress Bowl - Curved Star Exterior - Rare
188. M - 8½" 10 Ruffle Deep Garden Path Variant Bowl - Scarce Shape
189. W - Puzzle Stemmed Dugan Bon Bon - Very Pretty and Scarce
190. Saph. - Dugan Beaded Basketweave Basket - Extremely Rare Color - One of a Kind?
191. Smoke Flashed - 5" Estate Vase - Rare Color
192. Smoke Flashed - 2¾" Dia. Ftd. Trinket Box w/Lid - Rare - Not Listed
193. P.M. - Estate Ftd. Toothpick Holder - Rare
194. P.M. Flashed - Roman Rosette Small Mug - ¾" Tall
195. P.M. Flashed - Star & Bars Wine Glass - Extremely Scarce
196. P.M. Flashed - Fleur-De-Lis Wine Glass - Extremely Scarce
197. P.M. Flashed - Lincoln Drape or Rib Drape Wine Glass - Extremely Scarce
198. P.M. Flashed - Extended Flute Wine Glass - Extremely Scarce
199. P.M. Flashed - Oregon Beaded Loop Wine Glass - Extremely Rare
200. P.M. Flashed - US Glass Rare Panama Pattern Wine Glass
201. B - 7½" Deep ICS. Autumn Acorns Bowl
202. M - 8½", 3 in 1 Autumn Acorns Bowl - Scarce Shape
203. M - 7¼" ICS. Autumn Acorns Bowl - Very Pretty
204. M - 8½" 6 Ruffle Autumn Acorns Bowl
205. B - 9" 6 Ruffle Autumn Acorns Bowl - Very Pretty
206. M - Fashion 8 Piece Punch Bowl Set
207. A - Imperial Cobblestone Bowl - Radium Silver Irid.
208. M - Fenton Beaded Stars Rose Bowl - Scarce
209. M - N Leaf & Beads Sunflower Interior Nut Bowl - Great Scarce Example
210. P - Imperial 5¾" 8 Ruffle Scroll Embossed - Super Berry Bowl
211. A - 6" Tri-Cornered Peacock Tail Plate - Rare
212. P - N 5½" Peacock and Urn Ice Cream Bowl
213. M - 9" Spat. Ftd. N Grape & Cable Plate Meander Ext. - Beauty
214. M - 6 Ruffle 8" Bells & Beads Dugan Bowl
215. A - 6 Ruffle Concord Bowl - Hot Pattern
216. M - 6 Ruffle Concord Bowl - Great Example
217. G - 6 Ruffle Concord Bowl - Also Great Example
218. M - N P.C.E. Peacocks Rib Bk. Bowl - Pinks & Golds
219. Lav. A - Ruffled Peacocks Rib Bk. Bowl - Super Electric
220. M - Ruffled Good Luck B.W. Bowl - Pinks & Golds
221. M - Ruffled Good Luck Rib Bk. Bowl - Great Pinks & Golds
222. B - Ruffled Stippled Good Luck Rib Bk. Bowl - Elec. Blue/Purple
223. A - Ruffled Good Luck Bowl - Rib Bk. - Satin Pink, Yellow, Blue
224. P.M. - P.C.E. Good Luck Rib Bk. Bowl - Pinks & Golds
225. B - Ruffled Rib Bk. Good Luck Bowl - Multi Irid.
226. B - Great 9" N Rib Back Good Luck Plate
227. W - Scarce N Peacocks Ruffled Smooth Bk. Bowl - Frosty
228. P - Dugan 10 Ruffle Pony Bowl - Rare Shape & Color
229. G - Blackberry Ruffle Open Edge B.W. Bowl - Rare Pretty Color
230. Red - Lge. 7" Blackberry Open Edge 2 Sides Up B.W. Bowl - Rare
231. A - Radium MLBG. Holly Whorl or Sprig Ruffled Bowl
232. P - Imp. Ftd. 9¼" I.C.S. Open Rose Bowl - Super - Rare Shape - Chip on Marie
233. M - Waterlily & Cattails Sugar Bowl w/Lid - Great Find
234. M - Waterlily & Cattails Spooner - Great Find
235. M - Kittens 4-Sided Ruffled Bowl - Dark - Nice Detail
236. M - Kittens Toothpick or Vase - 2½" Tall
237. M - N Lustre Flute Radium Punch Cup
238. A - N Grape & Cable Punch Cups - 3 x S
239. G - N Stippled Grape & Cable Punch Cup - Very Scarce
240. G - Grape & Cable Punch Cup
241. P - Memphis Punch Cup - Weak Irid.
242. Rare Powder Blue - Fashion Punch Cup - And Its Pretty
243. M - Fashion Punch Cup

244. I.B. - N Memphis Very Scarce Punch Cup
245. G - N Acorn Burrs Punch Cup
246. **M - Rabbit Penny Bank - Scarce**
247. M - Globe Penny Bank
248. M - Liberty Bell Penny Bank
249. M - Ohio Oil Company Penny Pig Bank
250. **M - Extremely Rare Star & Fan 7 Piece Decanter Set with Under Plate (Makes 8)**
251. P - 9" N Rib Bk. Peacocks Plate - Purples/Golds
252. P.M. - N 9" Peacocks Rib Bk. Plate - Soft Blues & Yellow
253. P - 9" N B.W. Strawberry Plate - Nice Example
254. M - N 9" 3 Fruits Plate - B.W. Exterior - Soft Irid.
255. **M - 9 1/4" Orange Tree Fenton Plate - Pretty Pinks, Yellows, Golds**
256. **M - MLB. 6 Ruffle Brooklyn Bridge Bowl - Multi Radium**
257. M - 9" 8 Ruffle Lotus & Grape Bowl - Very Pretty
258. B - 8 1/2" Square 8 Ruffle Lotus & Grape Bowl - Scarce Color
259. **Lav. - 9 1/4" Imp. Low Ruffle Grape Plate**
260. B - Favorite Fenton Peacock & Urn Ruffle Bowl
261. M - Dark Fenton Ruffle Peacock & Urn Bowl - Pinks, Gold
262. M - Ftd. 8 Ruffle Horse Medallion Bowl - Great Example
263. A - 9" 6 Ruffle Fenton Vintage Bowl
264. **M - 7" I.C.S. Lions Bowl - Great Shape**
265. P.M. - 8 3/4" B.W. Ruffled N Grape & Cable Bowl
266. **G - 6 1/2" Ball Ftd. 6 Ruffle Lotus & Grape Bowl - Rare Shape & Color**
267. **W - 10 1/4" N I.C.S. Grape & Cable Bowl - Frosty and Scarce**
268. **M - 9" Ruffled, Scarce, Dugan Vintage Bowl - Very Pretty**
269. **A - 9" Ruffled, Scarce, Dugan Vintage Bowl - Very Pretty**
270. M - 9" Sq. 8 Ruffle Orange Tree Bowl - Pretty Satin
271. P - N B.W. Ruffled Greek Key Bowl - Undervalued Pattern
272. G - 9 1/2" 6 Ruffle Fenton Coin Dot Bowl
273. M - 9" Sq., Great, 8 Ruffle Collar Base Chrysanthemum Bowl
274. P - Beautiful 9" Ruffled B.W. N Nippon Bowl
275. G - 9" 6 Ruffle Fenton Vintage Bowl
276. **M - 7 oz. Souvenir Niagara Falls, N.Y. Goblet (See Photo)**
277. **M - 4 oz. Souvenir Spring Valley, Wis. Stem Piece (See Photo)**
278. **M - 3 1/2 oz. Souvenir Rice La Ke, Wis. Wine? (See Photo)**
279. **M - Souvenir Amboy, Minn. Cordial? (See Photo)**
280. **M - 5 1/4" McKee's Havana Souvenir Lake Mills, Iowa - Stem Wine**
281. M - Tulip & Cane Claret - Super Radium
282. M - Rare Tulip & Cane Cordial - Super Radium
283. M - Four Seventy Four Wine - Very Scarce
284. **M - Souvenir, Westville, N.S., U.S. Glass Coal Bucket - Super**
285. M - Chain & Star by Fostoria Cream/Sugar - Rare - Minor Roughness
286. M - McKee #100, Souvenir of Cleveland, Ohio Wine
287. **M - Cambridge Souvenir Mug - St. Ours, Que. - Super**
288. M - Rare Tiny Thumbprints Toothpick Holder, Buffalo, Minn.
289. **M - Trophy Toothpick, Souvenir of Detroit, Mich.**
290. G - Imp. Flute Toothpick Holder - Scarce Color
291. M - Enameled Decor. Skirted Optic Toothpick Holder
292. **B - Rare Fruit Band Shot Glass - Miniature**
293. **M - Rare Fruit Band Shot Glass - Miniature**
294. M - 3 3/8" Oval Hen on the Nest Miniature Covered Dish
295. **M - Scottie Miniature Candy Container - 4" x 3"**
296. **M - Bulldog Paper Weight - Miniature**
297. M - Daisy & Button Witches Pot - Very Pretty Example
298. M - Pair of Dove (?) Candlestick Holders - Neat Items
299. M - Dove or Pigeon Paperweight
300. M - Beautiful Flashed Lady's Slipper
301. M - Flashed Dog Paperweight with Bow on Neck
302. M - Miniature Blackberry Compote - Scarce, Super Strike
303. B - Miniature Blackberry Compote - Minor Base Roughness
304. **H.A. - 3 3/4" Sq. Cosmos & Cane Bowl - Rare Shape & Size**
305. **Teal - Amber Base Honey Pot - Very Scarce**
306. **Rare M - Pr. of Imp. Octagon Salt/Pepper Shakers**
307. A - Ball Ftd. 7" I.C.S. Horse Medallion Bowl - Very Scarce Shape
308. **M - Rare 8 Pce. Hobnail Cordial Set Complete**
309. **B - 10 3/8" I.C.S. Ball Ftd. Stag & Holly Bowl - Beautiful Example**
310. **Em. G. - N Grape & Cable Hat Pin Holder**
311. **Rare G - 9" Sq. 8 Ruffle Plaid Bowl**
312. **M - 9" Sq. 8 Ruffle Plaid Bowl - Scarce**
313. M - Maple Leaf Variant Tumbler - Radium
314. **Clam - Lustre Rose Variant Tumbler - Rare**
315. **M - Rare Cut Cosmos Tumbler - Radium**
316. M - N Waterlily & Cattails Tumbler - Radium Beauty
317. M - Radium Fenton Waterlily & Cattails Tumbler
318. M - Scarce Coin Dot Tumbler - Very Pretty
319. B - Rarely Seen Enameled Spring Festival Tumbler - Super
320. **Cherry Red - 6 1/2" I.C.S. Great Peacock Tail Rare Bowl**
321. **M - Rare 8 Piece Zipper Stitch Cordial Set Complete**
322. **G - MLB. 6 Ruffle 5 Star Many Stars Bowl - Rare & Radium**
323. **A - MLB. 6 Ruffle 5 Star Many Stars Bowl - Rare & Radium**
324. **P - 10 3/4" Super 6 Ruffle Elec. Petal & Fan Bowl**
325. M - Radium Hob Star & Shield Tumbler
326. M - Hobstar & Band Tumbler
327. G - Double Star Tumbler - Beautiful - Leans a Little
328. P - Very Scarce Dahlia Tumbler
329. B - Ftd. Orange Tree Tumbler
330. **M - Hersey Wigwam Tumbler - Very Rare - Minor Base Chips**
331. M - Flashed Banded Georgian Tumbler
332. **M - Flashed Very Rare Banded Moon & Stars Tumbler**
333. **M - Beaded Panels & Grapes Tumbler - Very Rare**
334. **M - Very Rare Beaded Spears Variant Juice Glass - Unlisted**
335. **M - Beaded Spears Rare Tumbler**
336. **M - Dark, Rich Kings Crown Little Wine Glass - Very Pretty**

## BALANCE OF AUCTION: CLUB AND CONTEMPORARY ITEMS

- \_\_\_\_\_ 337. Lime G - Rare Contemporary Tiara Water Pitcher
- \_\_\_\_\_ 338. Contemporary Pink 7 Piece Windmill Water Set - Signed L.I.G.
- \_\_\_\_\_ 339. Contemporary Green Opal Inverted Thistle 7 Piece Water Set
- \_\_\_\_\_ 340. Contemporary Ice Green Tiger Lily 5 Piece Water Set
- \_\_\_\_\_ 341. Red Dahlia 7 Piece Water Set - Rare Limited Edition
- \_\_\_\_\_ 342. W - Pebble Panels 7 Piece Water Set
- \_\_\_\_\_ 343. Red - 1974 H.O.A.C.G.A. Good Luck 7 Piece Water Set
- \_\_\_\_\_ 344. Smoke - I.G. Imperial Grape 7 Piece Water Set
- \_\_\_\_\_ 345. M - Lge. Tree Bark Variant 7 Piece Water Set
- \_\_\_\_\_ 346. P - High Hob Tumblers - 7 x \$
- \_\_\_\_\_ 347. Red - H.O.A.C.G.A. 1985 Good Luck Bell - A or B, Choice
- \_\_\_\_\_ 348. B - H.O.A.C.G.A. 1987 Good Luck Bell - A or B, Choice
- \_\_\_\_\_ 349. M - H.O.A.C.G.A. 1988 Good Luck Bell - A, B, C, D
- \_\_\_\_\_ 350. Saph. - H.O.A.C.G.A. 1989 Good Luck Bell - A or B
- \_\_\_\_\_ 351. Red - H.O.A.C.G.A. 1978 Corn Vase - A or B - Very Scarce
- \_\_\_\_\_ 352. Red - H.O.A.C.G.A. 1970 Good Luck Loving Cup - 1 only
- \_\_\_\_\_ 353. MMG - H.O.A.C.G.A. 1983 Good Luck Loving Cup - A or B
- \_\_\_\_\_ 354. Red - H.O.A.C.G.A. Good Luck Miniature Mug 1978 - A or B
- \_\_\_\_\_ 355. Aqua - H.O.A.C.G.A. Good Luck Miniature Mug 1979 - 1 Only
- \_\_\_\_\_ 356. G - H.O.A.C.G.A. Good Luck Miniature Mug 1980 - A or B
- \_\_\_\_\_ 357. Vas. Opal - H.O.A.C.G.A. Good Luck Miniature Mug 1981 - A or B
- \_\_\_\_\_ 358. Cobalt - H.O.A.C.G.A. Good Luck Miniature Mug 1982 - A or B
- \_\_\_\_\_ 359. Amber - H.O.A.C.G.A. Good Luck Miniature Mug 1983 - A or B
- \_\_\_\_\_ 360. P - H.O.A.C.G.A. Good Luck Miniature Mug 1984 - A or B
- \_\_\_\_\_ 361. Lav. Pink - H.O.A.C.G.A. Good Luck Miniature Mug 1985 - 1 Only
- \_\_\_\_\_ 362. Ice Green Opal - H.O.A.C.G.A. Good Luck Miniature Mug 1986 - A or B
- \_\_\_\_\_ 363. W - H.O.A.C.G.A. Good Luck Miniature Mug 1987 - A or B
- \_\_\_\_\_ 364. Saph - H.O.A.C.G.A. Good Luck Miniature Mug 1988 - 1 Only
- \_\_\_\_\_ 365. Pink Opal - H.O.A.C.G.A. Good Luck Miniature Mug 1989 - A or B
- \_\_\_\_\_ 366. Red - H.O.A.C.G.A. Good Luck Miniature Mug 1990 - A or B
- \_\_\_\_\_ 367. Pink Slag Opal - H.O.A.C.G.A. Good Luck Miniature Mug 1991 - A or B
- \_\_\_\_\_ 368. Lav. - H.O.A.C.G.A. Good Luck Miniature Mug (20th Year) 1993 - A or B
- \_\_\_\_\_ 369. Amber - H.O.A.C.G.A. Good Luck Miniature Mug 1994 - A or B
- \_\_\_\_\_ 370. Celeste - H.O.A.C.G.A. Good Luck Miniature Mug 1995 - A or B
- \_\_\_\_\_ 371. Red - Roaring 20's D.C.G.C. 1982 Hobnail Salt - Rare
- \_\_\_\_\_ 372. Red - I.C.G.A. 1971 St. Louis Rose Slipper
- \_\_\_\_\_ 373. A.O. Butterscotch Frolic King Bears I.C.G.A. 1981 Spittoon - Rare
- \_\_\_\_\_ 374. Red - A.C.G.A. 1993 Inverted Strawberry Spittoon - Kentucky - A or B
- \_\_\_\_\_ 375. Red - A.C.G.A. 1984 Sea Coast Spittoon - N.Y. - 1 Only
- \_\_\_\_\_ 376. G - A.C.G.A. 1983 Sea Coast Spittoon - PA - 1 Only
- \_\_\_\_\_ 377. Teal - A.C.G.A. 1977 In God We Trust Spittoon - Ohio - 1 Only
- \_\_\_\_\_ 378. Amberina - C.C.G.A. Spittoon - 1 Only
- \_\_\_\_\_ 379. Ice Green Opal - H.O.A.C.G.A. Hob Nail Spittoon - 1986 - Room Display
- \_\_\_\_\_ 380. Saph. - H.O.A.C.G.A. Hob Nail Spittoon - 1987 - Room Display
- \_\_\_\_\_ 381. Red - H.O.A.C.G.A. Hob Nail Spittoon - 1990 - Room Display
- \_\_\_\_\_ 382. Ice B. Opal - H.O.A.C.G.A. Hob Nail Spittoon - 1991 - Room Display
- \_\_\_\_\_ 383. Aqua - H.O.A.C.G.A. Hob Nail Spittoon - 1992 - Room Display
- \_\_\_\_\_ 384. Amber - H.O.A.C.G.A. Hob Nail Spittoon - 1984 - Room Display
- \_\_\_\_\_ 385. Ice B. Opal - H.O.A.C.G.A. Hob Nail Spittoon - 1996 - Room Display
- \_\_\_\_\_ 386. Amber - I.C.G.A. 1970 Milwaukee Ash Tray
- \_\_\_\_\_ 387. Red - A.C.G.A. 1967 Washington, D.C. Robins Mug - Rare
- \_\_\_\_\_ 388. Amber - I.C.G.A. 1993 Frolicking Bears - Lge. Tumblers - A or B
- \_\_\_\_\_ 389. Red - H.O.A.C.G.A. 1991 Peacock & Dahlia Plate - A or B
- \_\_\_\_\_ 390. M - A.C.G.A. 1985 Morning Glory Miniature Tankard
- \_\_\_\_\_ 391. E.M.G. - A.C.G.A. 1987 Morning Glory Miniature Tankard
- \_\_\_\_\_ 392. P - A.C.G.A. 1988 Morning Glory Miniature Tankard
- \_\_\_\_\_ 393. Red - A.C.G.A. 1989 Morning Glory Miniature Tankard
- \_\_\_\_\_ 394. Plum Opal - H.O.A.C.G.A. 1997 Candle Holder - A or B
- \_\_\_\_\_ 395. Plum Opal - H.O.A.C.G.A. 1997 Whimsey Candle Holder - Rare
- \_\_\_\_\_ 396. I.B. Opal - H.O.A.C.G.A. 1996 Candle Holder - A or B
- \_\_\_\_\_ 397. Cobalt - H.C.G.A. 1976 Joe St. Clair Toothpick Holder
- \_\_\_\_\_ 398. G - I.C.G.A. 1978 Ivy Town Pump
- \_\_\_\_\_ 399. P - I.C.G.A. 1979 Ivy Town Pump
- \_\_\_\_\_ 400. P.O. - Pac. N.W. Carnival G.C. 1982 - Fisherman's Mug
- \_\_\_\_\_ 401. Powder Ice B - Pac. N.W. Carnival G.C. 1983 Fisherman's Mug - A or B
- \_\_\_\_\_ 402. Cobalt B - Pac. N.W. Carnival G.C. 1984 Fisherman's Mug - 1 Only
- \_\_\_\_\_ 403. Amber - A.C.G.A. 1971 Beaded Shell Mug - A or B
- \_\_\_\_\_ 404. I.B. Opal - A.C.G.A. 1978 Bulbous Rare Beaded Shell Mug
- \_\_\_\_\_ 405. I.B. Opal - A.C.G.A. 1978 Standard Beaded Shell Mug
- \_\_\_\_\_ 406. Red - A.C.G.A. 1979 Beaded Shell Mug - 1 Only
- \_\_\_\_\_ 407. Saph. - A.C.G.A. 1980 Beaded Shell Mug - 1 Only
- \_\_\_\_\_ 408. Ice G. - A.C.G.A. 1980 Beaded Shell Mug - A or B
- \_\_\_\_\_ 409. Vas. - A.C.G.A. 1981 Beaded Shell Mug - 1 Only
- \_\_\_\_\_ 410. Vas. - A.C.G.A. 1981 Terry Crider Beaded Shell Mug - 1 Only
- \_\_\_\_\_ 411. W.M. - Glass Irid. 1981 Beaded Shell Mug - 1 Only
- \_\_\_\_\_ 412. G - A.C.G.A. July 4, 1970, Indianapolis 500 - Rare Spooner?
- \_\_\_\_\_ 413. Cobalt B - I.C.G.A. Director 1984 - Inverted Strawb. Spittoon - Very Rare

- \_\_\_\_\_ 414. P - Carnival Glass Encore, K.C., Mo. 1978 - D.T. Big Fish Compote
- \_\_\_\_\_ 415. Celeste - I.C.G.A. 1995 Acanthus Enameled Decorated Rose Bowl
- \_\_\_\_\_ 416. Red - H.O.A.C.G.A. 1984 Butterfly & Berry Good Luck Fernery
- \_\_\_\_\_ 417. B - A.C.G.A. 1982-83 Jos. St. Clair Cup Plate
- \_\_\_\_\_ 418. B.A. - 20th Anniversary A.C.E. 1995 Paper Weight
- \_\_\_\_\_ 419. Ice G - 1980 H.O.A.C.G.A. Good Luck Hat Pin Holder
- \_\_\_\_\_ 420. Amberina - I.C.G.A. 1975 Allentown, PA. Plate
- \_\_\_\_\_ 421. Smoke - Imperial I.G. Homestead Chop Plate
- \_\_\_\_\_ 422. W - Imperial I.G. Chrysanthemum Chop Plate
- \_\_\_\_\_ 423. Saph. - Imperial A.L.I.G. Chrysanthemum Chop Plate
- \_\_\_\_\_ 424. M - Imperial I.G. Chrysanthemum Chop Plate
- \_\_\_\_\_ 425. Pink - Imperial A.L.I.G. Homestead Chop Plate
- \_\_\_\_\_ 426. B - 11 $\frac{3}{4}$ " Signed D.B.S. Farmyard Chop Plate - Super
- \_\_\_\_\_ 427. P - 9 $\frac{1}{4}$ " Pony Head Plate - Super Radium
- \_\_\_\_\_ 428. MMG - 11" Lustre Rose Chop Plate - Wear on Front
- \_\_\_\_\_ 429. Cobalt - Fenton 1776-1976 Bicentennial Stein
- \_\_\_\_\_ 430. P - Fenton Fish Paper Weight

# AUCTION CALENDAR

**JANUARY 2, 1999**  
8TH ANNUAL EXTRAVAGANZA

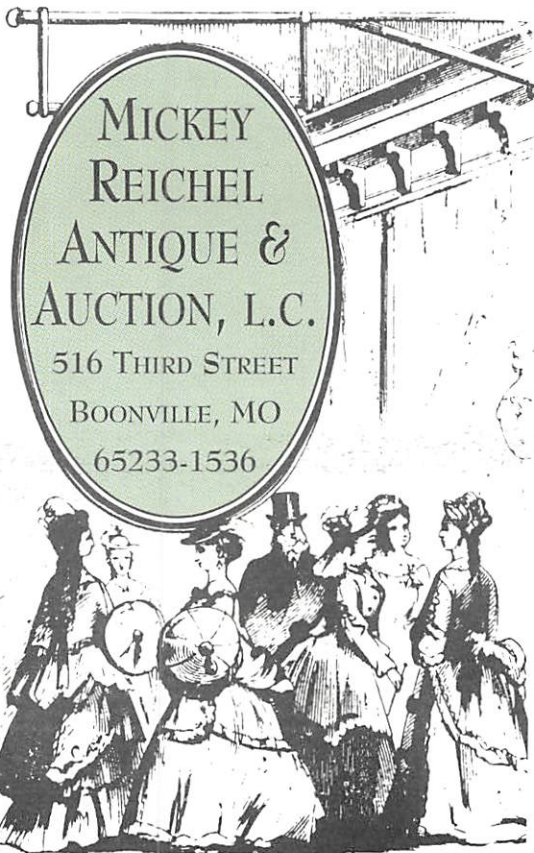
**MARCH 13, 1999**

**APRIL 3, 1999**

*If you haven't been to Boonville, MO and attended a Mickey Reichel Auction, I'm extending a special invitation to one of our very best yet.*

*Thank You, Mickey*

*Call us today for your auction of 1 piece or an entire collection. Booking now for 1999. A few spots left in the New Years' Auction.*



FIRST CLASS MAIL

SPECIAL INVITATION TO:

